



Full wwPDB X-ray Structure Validation Report ⓘ

Oct 15, 2023 – 07:11 PM EDT

PDB ID : 8DXL
Title : HIV-1 reverse transcriptase/rilpivirine with bound fragment 4-iodopyrazole at multiple sites
Authors : Chopra, A.; Ruiz, F.X.; Bauman, J.D.; Arnold, E.
Deposited on : 2022-08-02
Resolution : 2.25 Å(reported)

This is a Full wwPDB X-ray Structure Validation Report for a publicly released PDB entry.

We welcome your comments at validation@mail.wwpdb.org

A user guide is available at

<https://www.wwpdb.org/validation/2017/XrayValidationReportHelp>

with specific help available everywhere you see the ⓘ symbol.

The types of validation reports are described at

<http://www.wwpdb.org/validation/2017/FAQs#types>.

The following versions of software and data (see [references ⓘ](#)) were used in the production of this report:

MolProbity : 4.02b-467
Mogul : 1.8.5 (274361), CSD as541be (2020)
Xtrriage (Phenix) : 1.13
EDS : 2.36
buster-report : 1.1.7 (2018)
Percentile statistics : 20191225.v01 (using entries in the PDB archive December 25th 2019)
Refmac : 5.8.0158
CCP4 : 7.0.044 (Gargrove)
Ideal geometry (proteins) : Engh & Huber (2001)
Ideal geometry (DNA, RNA) : Parkinson et al. (1996)
Validation Pipeline (wwPDB-VP) : 2.36

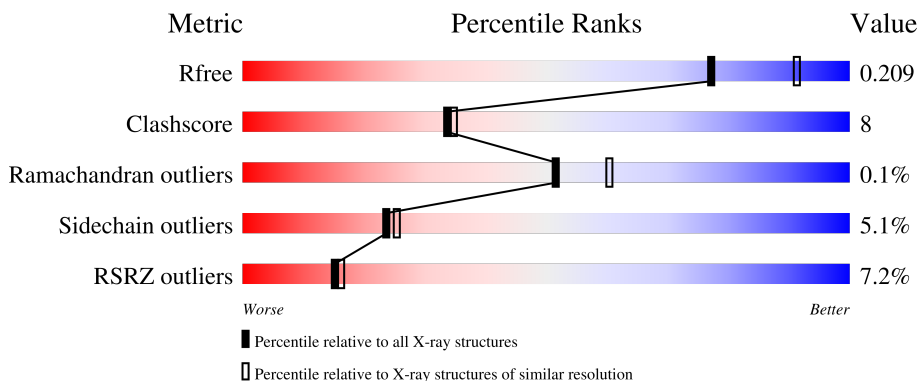
1 Overall quality at a glance

The following experimental techniques were used to determine the structure:

X-RAY DIFFRACTION

The reported resolution of this entry is 2.25 Å.

Percentile scores (ranging between 0-100) for global validation metrics of the entry are shown in the following graphic. The table shows the number of entries on which the scores are based.



Metric	Whole archive (#Entries)	Similar resolution (#Entries, resolution range(Å))
R_{free}	130704	1377 (2.26-2.26)
Clashscore	141614	1487 (2.26-2.26)
Ramachandran outliers	138981	1449 (2.26-2.26)
Sidechain outliers	138945	1450 (2.26-2.26)
RSRZ outliers	127900	1356 (2.26-2.26)

The table below summarises the geometric issues observed across the polymeric chains and their fit to the electron density. The red, orange, yellow and green segments of the lower bar indicate the fraction of residues that contain outliers for ≥ 3 , 2, 1 and 0 types of geometric quality criteria respectively. A grey segment represents the fraction of residues that are not modelled. The numeric value for each fraction is indicated below the corresponding segment, with a dot representing fractions $\leq 5\%$. The upper red bar (where present) indicates the fraction of residues that have poor fit to the electron density. The numeric value is given above the bar.

Mol	Chain	Length	Quality of chain
1	A	557	
2	B	428	

The following table lists non-polymeric compounds, carbohydrate monomers and non-standard residues in protein, DNA, RNA chains that are outliers for geometric or electron-density-fit criteria:

Mol	Type	Chain	Res	Chirality	Geometry	Clashes	Electron density
4	DMS	B	501	-	-	X	-
8	PYZ	A	612	-	-	X	-
8	PYZ	B	507[A]	-	-	X	-

2 Entry composition [i](#)

There are 9 unique types of molecules in this entry. The entry contains 8839 atoms, of which 0 are hydrogens and 0 are deuteriums.

In the tables below, the ZeroOcc column contains the number of atoms modelled with zero occupancy, the AltConf column contains the number of residues with at least one atom in alternate conformation and the Trace column contains the number of residues modelled with at most 2 atoms.

- Molecule 1 is a protein called Reverse transcriptase/ribonuclease H.

Mol	Chain	Residues	Atoms					ZeroOcc	AltConf	Trace
			Total	C	N	O	S			
1	A	556	4527	2929	752	838	8	0	2	0

There are 5 discrepancies between the modelled and reference sequences:

Chain	Residue	Modelled	Actual	Comment	Reference
A	-1	MET	-	expression tag	UNP P03366
A	0	VAL	-	expression tag	UNP P03366
A	172	ALA	LYS	engineered mutation	UNP P03366
A	173	ALA	LYS	engineered mutation	UNP P03366
A	280	SER	CYS	engineered mutation	UNP P03366

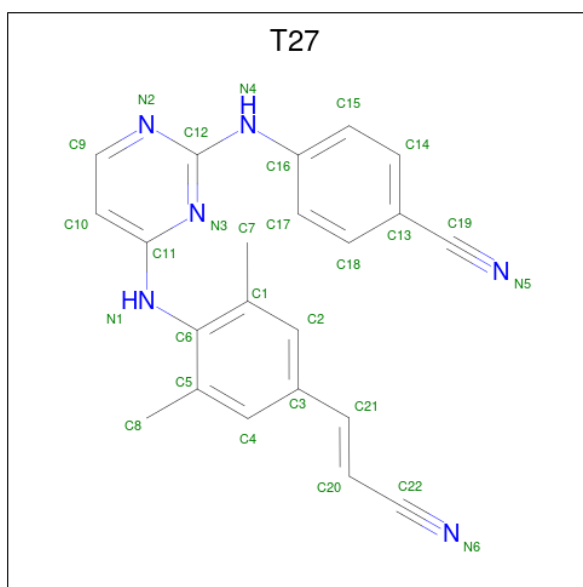
- Molecule 2 is a protein called p51 RT.

Mol	Chain	Residues	Atoms					ZeroOcc	AltConf	Trace
			Total	C	N	O	S			
2	B	415	3449	2250	570	622	7	0	3	0

There is a discrepancy between the modelled and reference sequences:

Chain	Residue	Modelled	Actual	Comment	Reference
B	280	SER	CYS	engineered mutation	UNP P03366

- Molecule 3 is 4-{{4-({4-[(E)-2-cyanoethenyl]-2,6-dimethylphenyl}amino)pyrimidin-2-yl}amino}benzotrile (three-letter code: T27) (formula: C₂₂H₁₈N₆).



Mol	Chain	Residues	Atoms			ZeroOcc	AltConf
3	A	1	Total	C	N	0	0
			28	22	6		

- Molecule 4 is DIMETHYL SULFOXIDE (three-letter code: DMS) (formula: C₂H₆OS).



Mol	Chain	Residues	Atoms				ZeroOcc	AltConf
4	A	1	Total	C	O	S	0	0
			4	2	1	1		
4	A	1	Total	C	O	S	0	0
			4	2	1	1		
4	B	1	Total	C	O	S	0	0
			4	2	1	1		

Continued on next page...

Continued from previous page...

Mol	Chain	Residues	Atoms			ZeroOcc	AltConf	
4	B	1	Total	C	O	S	0	0
			4	2	1	1		
4	B	1	Total	C	O	S	0	0
			4	2	1	1		

- Molecule 5 is 1,2-ETHANEDIOL (three-letter code: EDO) (formula: C₂H₆O₂).



Mol	Chain	Residues	Atoms			ZeroOcc	AltConf
5	A	1	Total	C	O		
			4	2	2	0	0
5	A	1	Total	C	O		
			4	2	2	0	0
5	A	1	Total	C	O		
			4	2	2	0	0
5	B	1	Total	C	O		
			4	2	2	0	0
5	B	1	Total	C	O		
			4	2	2	0	0

- Molecule 6 is MAGNESIUM ION (three-letter code: MG) (formula: Mg).

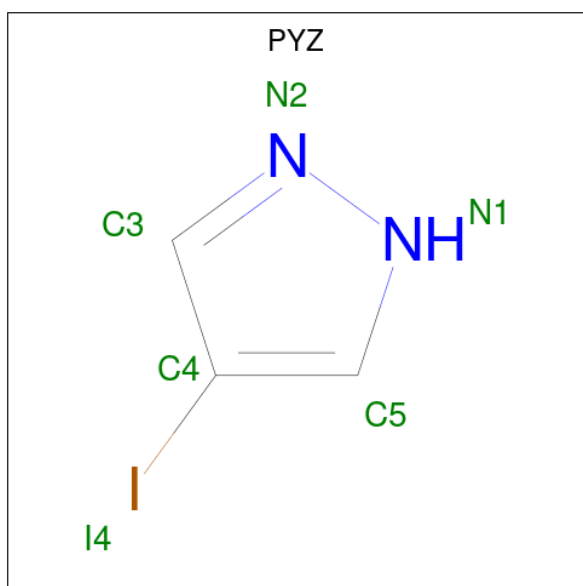
Mol	Chain	Residues	Atoms		ZeroOcc	AltConf
6	A	1	Total	Mg	0	0
			1	1		

- Molecule 7 is SULFATE ION (three-letter code: SO4) (formula: O₄S).



Mol	Chain	Residues	Atoms			ZeroOcc	AltConf
7	A	1	Total	O	S	0	0
			5	4	1		
7	A	1	Total	O	S	0	0
			5	4	1		
7	A	1	Total	O	S	0	0
			5	4	1		
7	B	1	Total	O	S	0	0
			5	4	1		

- Molecule 8 is 4-iodopyrazole (three-letter code: PYZ) (formula: C₃H₃IN₂) (labeled as "Ligand of Interest" by depositor).



Mol	Chain	Residues	Atoms	ZeroOcc	AltConf
8	A	1	Total C I N 6 3 1 2	0	1
8	A	1	Total C I N 6 3 1 2	0	0
8	B	1	Total C I N 6 3 1 2	0	1

- Molecule 9 is water.

Mol	Chain	Residues	Atoms	ZeroOcc	AltConf
9	A	447	Total O 447 447	0	3
9	B	309	Total O 309 309	0	1

4 Data and refinement statistics

Property	Value	Source
Space group	C 1 2 1	Depositor
Cell constants a, b, c, α , β , γ	162.32Å 73.31Å 109.40Å 90.00° 100.62° 90.00°	Depositor
Resolution (Å)	41.20 – 2.25 43.05 – 2.25	Depositor EDS
% Data completeness (in resolution range)	87.0 (41.20-2.25) 87.1 (43.05-2.25)	Depositor EDS
R_{merge}	0.10	Depositor
R_{sym}	(Not available)	Depositor
$\langle I/\sigma(I) \rangle$ ¹	2.62 (at 2.24Å)	Xtrriage
Refinement program	PHENIX dev_3051	Depositor
R, R_{free}	0.182 , 0.208 0.182 , 0.209	Depositor DCC
R_{free} test set	1843 reflections (3.46%)	wwPDB-VP
Wilson B-factor (Å ²)	29.6	Xtrriage
Anisotropy	0.284	Xtrriage
Bulk solvent k_{sol} (e/Å ³), B_{sol} (Å ²)	0.33 , 53.8	EDS
L-test for twinning ²	$\langle L \rangle = 0.48$, $\langle L^2 \rangle = 0.31$	Xtrriage
Estimated twinning fraction	No twinning to report.	Xtrriage
F_o, F_c correlation	0.94	EDS
Total number of atoms	8839	wwPDB-VP
Average B, all atoms (Å ²)	47.0	wwPDB-VP

Xtrriage's analysis on translational NCS is as follows: *The largest off-origin peak in the Patterson function is 4.98% of the height of the origin peak. No significant pseudotranslation is detected.*

¹Intensities estimated from amplitudes.

²Theoretical values of $\langle |L| \rangle$, $\langle L^2 \rangle$ for acentric reflections are 0.5, 0.333 respectively for untwinned datasets, and 0.375, 0.2 for perfectly twinned datasets.

5 Model quality

5.1 Standard geometry

Bond lengths and bond angles in the following residue types are not validated in this section: MG, EDO, SO4, T27, DMS, PYZ

The Z score for a bond length (or angle) is the number of standard deviations the observed value is removed from the expected value. A bond length (or angle) with $|Z| > 5$ is considered an outlier worth inspection. RMSZ is the root-mean-square of all Z scores of the bond lengths (or angles).

Mol	Chain	Bond lengths		Bond angles	
		RMSZ	# Z >5	RMSZ	# Z >5
1	A	0.55	0/4648	0.73	0/6319
2	B	0.54	0/3556	0.74	0/4832
All	All	0.54	0/8204	0.74	0/11151

There are no bond length outliers.

There are no bond angle outliers.

There are no chirality outliers.

There are no planarity outliers.

5.2 Too-close contacts

In the following table, the Non-H and H(model) columns list the number of non-hydrogen atoms and hydrogen atoms in the chain respectively. The H(added) column lists the number of hydrogen atoms added and optimized by MolProbity. The Clashes column lists the number of clashes within the asymmetric unit, whereas Symm-Clashes lists symmetry-related clashes.

Mol	Chain	Non-H	H(model)	H(added)	Clashes	Symm-Clashes
1	A	4527	0	4576	68	0
2	B	3449	0	3479	65	0
3	A	28	0	18	2	0
4	A	8	0	12	1	0
4	B	12	0	18	6	0
5	A	12	0	18	0	0
5	B	8	0	12	0	0
6	A	1	0	0	0	0
7	A	15	0	0	0	0
7	B	5	0	0	0	0
8	A	12	0	6	6	0

Continued on next page...

Continued from previous page...

Mol	Chain	Non-H	H(model)	H(added)	Clashes	Symm-Clashes
8	B	6	0	3	5	0
9	A	447	0	0	15	0
9	B	309	0	0	13	0
All	All	8839	0	8142	137	0

The all-atom clashscore is defined as the number of clashes found per 1000 atoms (including hydrogen atoms). The all-atom clashscore for this structure is 8.

All (137) close contacts within the same asymmetric unit are listed below, sorted by their clash magnitude.

Atom-1	Atom-2	Interatomic distance (Å)	Clash overlap (Å)
2:B:373:GLN:HB3	8:B:507[A]:PYZ:C5	1.74	1.18
2:B:373:GLN:CB	8:B:507[A]:PYZ:H5	1.78	1.13
2:B:373:GLN:HB3	8:B:507[A]:PYZ:H5	0.91	0.89
2:B:207:GLN:HA	2:B:210:LEU:HD23	1.53	0.87
2:B:287:LYS:HE3	9:B:610:HOH:O	1.74	0.87
1:A:301:LEU:O	1:A:305:GLU:HG3	1.75	0.86
1:A:25:PRO:HA	9:A:757:HOH:O	1.77	0.83
1:A:249:LYS:HE2	9:A:834:HOH:O	1.78	0.83
1:A:448:ARG:HD3	1:A:448:ARG:H	1.45	0.82
1:A:164:MET:HG2	8:A:612:PYZ:I4	2.51	0.80
1:A:24:TRP:HB2	9:A:806:HOH:O	1.81	0.80
2:B:206:ARG:O	2:B:210:LEU:HD22	1.80	0.80
1:A:249:LYS:CE	9:A:834:HOH:O	2.33	0.76
1:A:478:GLU:HG2	1:A:499:SER:HB2	1.67	0.76
2:B:274:ILE:C	2:B:275:LYS:HD2	2.07	0.75
2:B:239:TRP:HE1	4:B:501:DMS:H22	1.51	0.74
1:A:480[B]:GLN:HG3	1:A:517:LEU:HD21	1.70	0.74
1:A:449:GLU:N	1:A:449:GLU:OE2	2.21	0.73
1:A:118:VAL:HG22	8:A:612:PYZ:H3	1.68	0.73
2:B:191:SER:HB2	2:B:193:LEU:HD13	1.73	0.70
2:B:239:TRP:HE1	4:B:501:DMS:C2	2.04	0.70
1:A:164:MET:SD	8:A:612:PYZ:I4	3.20	0.69
1:A:428:GLN:NE2	9:A:702:HOH:O	2.22	0.69
2:B:11:LYS:HD3	2:B:12:LEU:H	1.60	0.66
2:B:297:GLU:CG	2:B:298:GLU:OE2	2.44	0.66
2:B:206:ARG:O	2:B:210:LEU:CD2	2.45	0.65
1:A:52:PRO:HD2	1:A:53:GLU:OE1	1.96	0.65
2:B:357:MET:HB3	2:B:367:GLN:HG2	1.79	0.64
2:B:195:ILE:HD11	2:B:199:ARG:NH2	2.14	0.62
1:A:32:LYS:NZ	9:A:704:HOH:O	2.31	0.62

Continued on next page...

Continued from previous page...

Atom-1	Atom-2	Interatomic distance (Å)	Clash overlap (Å)
2:B:308:GLU:OE1	2:B:311:LYS:NZ	2.28	0.62
1:A:254:VAL:HG23	1:A:293:ILE:HD11	1.81	0.61
1:A:545:ASN:ND2	9:A:709:HOH:O	2.34	0.61
2:B:297:GLU:HG3	2:B:298:GLU:OE2	2.02	0.60
1:A:53:GLU:OE1	1:A:53:GLU:N	2.28	0.60
2:B:235:HIS:H	4:B:501:DMS:C2	2.15	0.60
8:B:507[A]:PYZ:C5	9:B:616:HOH:O	2.49	0.59
1:A:164:MET:CG	8:A:612:PYZ:I4	3.19	0.59
2:B:428:GLN:CD	9:B:632:HOH:O	2.41	0.59
2:B:11:LYS:HA	2:B:11:LYS:HE2	1.85	0.58
3:A:601:T27:N3	3:A:601:T27:H17	2.18	0.58
4:A:603:DMS:H22	9:B:743:HOH:O	2.02	0.58
1:A:5:ILE:HG13	8:A:612:PYZ:C5	2.33	0.58
2:B:40:GLU:O	2:B:44:GLU:HG2	2.04	0.58
1:A:451:LYS:HE3	1:A:471:ASN:OD1	2.05	0.57
2:B:30:LYS:NZ	9:B:601:HOH:O	2.36	0.57
2:B:297:GLU:HG2	2:B:298:GLU:OE2	2.04	0.57
1:A:369:THR:HG22	1:A:373[A]:GLN:HE22	1.70	0.57
2:B:263:LYS:NZ	9:B:611:HOH:O	2.36	0.56
1:A:13:LYS:HB2	1:A:16:MET:SD	2.45	0.56
2:B:235:HIS:H	4:B:501:DMS:H23	1.69	0.56
2:B:193:LEU:HD12	2:B:193:LEU:N	2.21	0.55
2:B:241:VAL:CG1	9:B:866:HOH:O	2.54	0.55
1:A:448:ARG:HD3	1:A:448:ARG:N	2.19	0.54
2:B:65:LYS:HA	2:B:407:GLN:HG2	1.89	0.54
1:A:53:GLU:H	1:A:53:GLU:CD	2.07	0.53
1:A:536:VAL:HB	1:A:542:ILE:HD13	1.89	0.53
2:B:5:ILE:HD12	2:B:6:GLU:N	2.24	0.53
2:B:211:ARG:HG3	2:B:211:ARG:NH1	2.22	0.53
2:B:297:GLU:HG3	2:B:298:GLU:N	2.24	0.53
8:B:507[A]:PYZ:C4	9:B:616:HOH:O	2.57	0.52
1:A:167:ILE:HD12	8:A:612:PYZ:I4	2.80	0.52
2:B:388:LYS:HE3	2:B:415:GLU:HG2	1.92	0.52
2:B:275:LYS:HD2	2:B:275:LYS:N	2.22	0.52
1:A:28:GLU:HG3	1:A:135:ILE:HD12	1.93	0.51
1:A:249:LYS:HE3	9:A:834:HOH:O	2.05	0.51
1:A:543:GLY:H	2:B:283:LEU:HB3	1.77	0.50
2:B:13:LYS:O	2:B:16:MET:HB3	2.12	0.50
2:B:91:GLN:C	2:B:93:GLY:H	2.15	0.49
1:A:5:ILE:HD11	1:A:167:ILE:HD11	1.93	0.49
2:B:6:GLU:OE1	2:B:7:THR:N	2.46	0.49

Continued on next page...

Continued from previous page...

Atom-1	Atom-2	Interatomic distance (Å)	Clash overlap (Å)
2:B:234:LEU:HA	4:B:501:DMS:H21	1.95	0.49
1:A:112:GLY:HA2	1:A:115:TYR:HB2	1.94	0.48
1:A:73:LYS:N	9:A:721:HOH:O	2.45	0.48
2:B:328:GLU:CD	2:B:390:LYS:HE2	2.34	0.48
1:A:164:MET:HG3	1:A:182:GLN:HE22	1.77	0.48
2:B:195:ILE:HD11	2:B:199:ARG:HH21	1.78	0.47
2:B:308:GLU:OE1	2:B:311:LYS:CE	2.63	0.47
2:B:193:LEU:N	2:B:193:LEU:CD1	2.77	0.47
1:A:491:LEU:HD13	1:A:529:GLU:OE1	2.15	0.47
1:A:512:LYS:HB2	1:A:512:LYS:HE2	1.69	0.47
2:B:241:VAL:HB	9:B:866:HOH:O	2.16	0.46
1:A:181:TYR:CE2	1:A:183:TYR:HB2	2.50	0.46
1:A:478:GLU:HG2	9:A:774:HOH:O	2.16	0.46
1:A:376:THR:O	1:A:380:ILE:HG12	2.15	0.46
1:A:417:VAL:HG22	1:A:419:THR:HG23	1.97	0.46
1:A:353:LYS:HB3	9:A:717:HOH:O	2.15	0.45
2:B:346:PHE:HA	9:B:857:HOH:O	2.16	0.45
2:B:388:LYS:CE	2:B:415:GLU:OE1	2.65	0.45
2:B:308:GLU:OE1	2:B:311:LYS:HE2	2.17	0.45
1:A:445:ALA:HB2	9:A:708:HOH:O	2.16	0.45
1:A:447:ASN:OD1	1:A:450:THR:HG23	2.15	0.45
2:B:91:GLN:C	2:B:93:GLY:N	2.70	0.45
2:B:195:ILE:O	2:B:199:ARG:HG3	2.16	0.45
2:B:183:TYR:CE2	2:B:184:MET:HG2	2.51	0.45
1:A:293:ILE:HD12	1:A:293:ILE:N	2.32	0.44
1:A:480[B]:GLN:NE2	9:A:719:HOH:O	2.49	0.44
1:A:361:HIS:HB3	1:A:510:PRO:HB3	1.99	0.44
1:A:319:TYR:OH	1:A:385:LYS:HE2	2.17	0.44
2:B:203:GLU:OE1	2:B:206:ARG:HD2	2.17	0.44
2:B:207:GLN:CA	2:B:210:LEU:HD23	2.36	0.44
2:B:151:GLN:HB3	2:B:185:ASP:OD2	2.17	0.44
1:A:65:LYS:HB2	1:A:65:LYS:HE2	1.64	0.44
1:A:354:TYR:HD1	1:A:374:LYS:HD2	1.83	0.44
2:B:281:LYS:O	2:B:284:ARG:HB2	2.17	0.43
1:A:91:GLN:H	1:A:91:GLN:HG3	1.25	0.43
1:A:277:ARG:HD3	9:A:863:HOH:O	2.19	0.43
1:A:426:TRP:HB3	1:A:526:ILE:HG12	2.01	0.43
1:A:-1:MET:HG2	1:A:0:VAL:N	2.33	0.43
2:B:206:ARG:C	2:B:210:LEU:CD2	2.87	0.43
2:B:211:ARG:HG3	2:B:211:ARG:HH11	1.82	0.43
1:A:246:LEU:HD22	1:A:260:LEU:HD12	2.00	0.43

Continued on next page...

Continued from previous page...

Atom-1	Atom-2	Interatomic distance (Å)	Clash overlap (Å)
1:A:480[B]:GLN:HG3	1:A:517:LEU:CD2	2.45	0.43
2:B:38:CYS:SG	2:B:132:ILE:HD11	2.59	0.43
1:A:427:TYR:C	1:A:428:GLN:HG3	2.39	0.42
1:A:92:LEU:HD12	1:A:92:LEU:HA	1.75	0.42
2:B:91:GLN:HB3	2:B:93:GLY:H	1.85	0.42
1:A:166:LYS:HE2	1:A:166:LYS:HB2	1.75	0.42
1:A:369:THR:O	1:A:373[B]:GLN:HG2	2.20	0.42
4:B:503:DMS:H11	9:B:783:HOH:O	2.20	0.42
1:A:224:GLU:O	9:A:701:HOH:O	2.22	0.41
1:A:503:LEU:HG	1:A:507:GLN:HG3	2.01	0.41
2:B:241:VAL:HG12	9:B:866:HOH:O	2.20	0.41
2:B:170:PRO:HB2	2:B:208:HIS:HE1	1.84	0.41
1:A:259:LYS:HE2	1:A:259:LYS:HB2	1.70	0.41
1:A:38:CYS:SG	1:A:132:ILE:HD11	2.61	0.41
1:A:448:ARG:H	1:A:448:ARG:CD	2.21	0.41
1:A:542:ILE:O	1:A:545:ASN:HB3	2.21	0.41
2:B:193:LEU:HD23	2:B:197:GLN:HB3	2.03	0.41
2:B:274:ILE:O	2:B:275:LYS:HD2	2.21	0.41
1:A:24:TRP:CG	1:A:25:PRO:HD2	2.57	0.40
2:B:36:GLU:HG3	9:B:641:HOH:O	2.20	0.40
1:A:126:LYS:HE3	1:A:127:TYR:CZ	2.57	0.40
2:B:168:LEU:HD22	2:B:205:LEU:HD11	2.03	0.40
1:A:101:LYS:O	3:A:601:T27:H15	2.21	0.40
2:B:94:ILE:H	2:B:94:ILE:HG12	1.49	0.40
2:B:273:GLY:HA2	2:B:275:LYS:HZ3	1.86	0.40

There are no symmetry-related clashes.

5.3 Torsion angles [i](#)

5.3.1 Protein backbone [i](#)

In the following table, the Percentiles column shows the percent Ramachandran outliers of the chain as a percentile score with respect to all X-ray entries followed by that with respect to entries of similar resolution.

The Analysed column shows the number of residues for which the backbone conformation was analysed, and the total number of residues.

Mol	Chain	Analysed	Favoured	Allowed	Outliers	Percentiles
1	A	556/557 (100%)	539 (97%)	16 (3%)	1 (0%)	47 55

Continued on next page...

Continued from previous page...

Mol	Chain	Analysed	Favoured	Allowed	Outliers	Percentiles	
2	B	414/428 (97%)	401 (97%)	13 (3%)	0	100	100
All	All	970/985 (98%)	940 (97%)	29 (3%)	1 (0%)	51	60

All (1) Ramachandran outliers are listed below:

Mol	Chain	Res	Type
1	A	64	LYS

5.3.2 Protein sidechains [i](#)

In the following table, the Percentiles column shows the percent sidechain outliers of the chain as a percentile score with respect to all X-ray entries followed by that with respect to entries of similar resolution.

The Analysed column shows the number of residues for which the sidechain conformation was analysed, and the total number of residues.

Mol	Chain	Analysed	Rotameric	Outliers	Percentiles	
1	A	496/495 (100%)	471 (95%)	25 (5%)	24	26
2	B	379/390 (97%)	359 (95%)	20 (5%)	22	23
All	All	875/885 (99%)	830 (95%)	45 (5%)	24	25

All (45) residues with a non-rotameric sidechain are listed below:

Mol	Chain	Res	Type
1	A	24	TRP
1	A	42	GLU
1	A	63	ILE
1	A	65	LYS
1	A	66	LYS
1	A	67	ASP
1	A	68	SER
1	A	69	THR
1	A	70	LYS
1	A	72	ARG
1	A	91	GLN
1	A	92	LEU
1	A	118	VAL
1	A	142	ILE
1	A	217	PRO

Continued on next page...

Continued from previous page...

Mol	Chain	Res	Type
1	A	218	ASP
1	A	219	LYS
1	A	286	THR
1	A	287	LYS
1	A	373[A]	GLN
1	A	373[B]	GLN
1	A	390	LYS
1	A	448	ARG
1	A	512	LYS
1	A	550	LYS
2	B	64	LYS
2	B	65	LYS
2	B	66	LYS
2	B	69	THR
2	B	70	LYS
2	B	90	VAL
2	B	91	GLN
2	B	92	LEU
2	B	94	ILE
2	B	214	LEU
2	B	230	MET
2	B	275	LYS
2	B	281	LYS
2	B	283	LEU
2	B	284	ARG
2	B	300	GLU
2	B	356	ARG
2	B	358	ARG
2	B	395	LYS
2	B	410	TRP

Sometimes sidechains can be flipped to improve hydrogen bonding and reduce clashes. All (6) such sidechains are listed below:

Mol	Chain	Res	Type
1	A	91	GLN
1	A	182	GLN
2	B	85	GLN
2	B	207	GLN
2	B	208	HIS
2	B	428	GLN

5.3.3 RNA [i](#)

There are no RNA molecules in this entry.

5.4 Non-standard residues in protein, DNA, RNA chains [i](#)

There are no non-standard protein/DNA/RNA residues in this entry.

5.5 Carbohydrates [i](#)

There are no monosaccharides in this entry.

5.6 Ligand geometry [i](#)

Of 19 ligands modelled in this entry, 1 is monoatomic - leaving 18 for Mogul analysis.

In the following table, the Counts columns list the number of bonds (or angles) for which Mogul statistics could be retrieved, the number of bonds (or angles) that are observed in the model and the number of bonds (or angles) that are defined in the Chemical Component Dictionary. The Link column lists molecule types, if any, to which the group is linked. The Z score for a bond length (or angle) is the number of standard deviations the observed value is removed from the expected value. A bond length (or angle) with $|Z| > 2$ is considered an outlier worth inspection. RMSZ is the root-mean-square of all Z scores of the bond lengths (or angles).

Mol	Type	Chain	Res	Link	Bond lengths			Bond angles		
					Counts	RMSZ	# Z > 2	Counts	RMSZ	# Z > 2
5	EDO	B	505	-	3,3,3	0.06	0	2,2,2	0.19	0
4	DMS	A	603	-	3,3,3	2.71	1 (33%)	3,3,3	0.42	0
5	EDO	A	604	-	3,3,3	0.14	0	2,2,2	0.15	0
4	DMS	A	602	-	3,3,3	2.59	1 (33%)	3,3,3	0.95	0
4	DMS	B	502	-	3,3,3	2.56	1 (33%)	3,3,3	0.48	0
7	SO4	B	506	-	4,4,4	0.21	0	6,6,6	0.47	0
8	PYZ	A	611[A]	-	6,6,6	0.61	0	2,7,7	0.15	0
8	PYZ	B	507[A]	-	6,6,6	0.54	0	2,7,7	0.31	0
5	EDO	A	606	-	3,3,3	0.29	0	2,2,2	0.06	0
7	SO4	A	608	-	4,4,4	0.17	0	6,6,6	0.17	0
7	SO4	A	609	-	4,4,4	0.50	0	6,6,6	0.08	0
4	DMS	B	503	-	3,3,3	2.99	1 (33%)	3,3,3	1.07	0
8	PYZ	A	612	-	6,6,6	0.83	0	2,7,7	0.22	0
3	T27	A	601	-	30,30,30	1.10	3 (10%)	39,40,40	2.16	11 (28%)
7	SO4	A	610	-	4,4,4	0.43	0	6,6,6	0.04	0
4	DMS	B	501	-	3,3,3	2.63	1 (33%)	3,3,3	0.58	0

Mol	Type	Chain	Res	Link	Bond lengths			Bond angles		
					Counts	RMSZ	# Z > 2	Counts	RMSZ	# Z > 2
5	EDO	B	504	-	3,3,3	0.21	0	2,2,2	0.40	0
5	EDO	A	605	-	3,3,3	0.10	0	2,2,2	0.26	0

In the following table, the Chirals column lists the number of chiral outliers, the number of chiral centers analysed, the number of these observed in the model and the number defined in the Chemical Component Dictionary. Similar counts are reported in the Torsion and Rings columns. '-' means no outliers of that kind were identified.

Mol	Type	Chain	Res	Link	Chirals	Torsions	Rings
5	EDO	B	505	-	-	1/1/1/1	-
5	EDO	A	604	-	-	0/1/1/1	-
8	PYZ	A	611[A]	-	-	-	0/1/1/1
8	PYZ	B	507[A]	-	-	-	0/1/1/1
5	EDO	A	606	-	-	0/1/1/1	-
8	PYZ	A	612	-	-	-	0/1/1/1
3	T27	A	601	-	-	2/13/14/14	0/3/3/3
5	EDO	B	504	-	-	0/1/1/1	-
5	EDO	A	605	-	-	0/1/1/1	-

All (8) bond length outliers are listed below:

Mol	Chain	Res	Type	Atoms	Z	Observed(Å)	Ideal(Å)
4	B	503	DMS	O-S	5.00	1.84	1.50
4	A	603	DMS	O-S	4.59	1.81	1.50
4	B	501	DMS	O-S	4.45	1.80	1.50
4	A	602	DMS	O-S	4.33	1.79	1.50
4	B	502	DMS	O-S	4.31	1.79	1.50
3	A	601	T27	C12-N4	3.65	1.43	1.36
3	A	601	T27	C11-N1	2.17	1.42	1.38
3	A	601	T27	C13-C19	2.05	1.49	1.44

All (11) bond angle outliers are listed below:

Mol	Chain	Res	Type	Atoms	Z	Observed(°)	Ideal(°)
3	A	601	T27	C9-N2-C12	5.39	120.23	115.45
3	A	601	T27	N2-C12-N3	-5.33	121.49	126.55
3	A	601	T27	C1-C6-N1	5.21	129.02	119.34
3	A	601	T27	C5-C6-N1	-5.02	110.00	119.34
3	A	601	T27	C10-C9-N2	-3.52	119.59	123.96
3	A	601	T27	C20-C22-N6	-2.92	165.96	176.30
3	A	601	T27	C4-C3-C21	-2.27	113.84	120.60
3	A	601	T27	C9-C10-C11	2.23	118.22	116.76

Continued on next page...

Continued from previous page...

Mol	Chain	Res	Type	Atoms	Z	Observed(°)	Ideal(°)
3	A	601	T27	C12-N3-C11	2.22	120.71	116.28
3	A	601	T27	C10-C11-N3	-2.14	119.55	123.16
3	A	601	T27	C4-C5-C6	2.14	120.73	118.23

There are no chirality outliers.

All (3) torsion outliers are listed below:

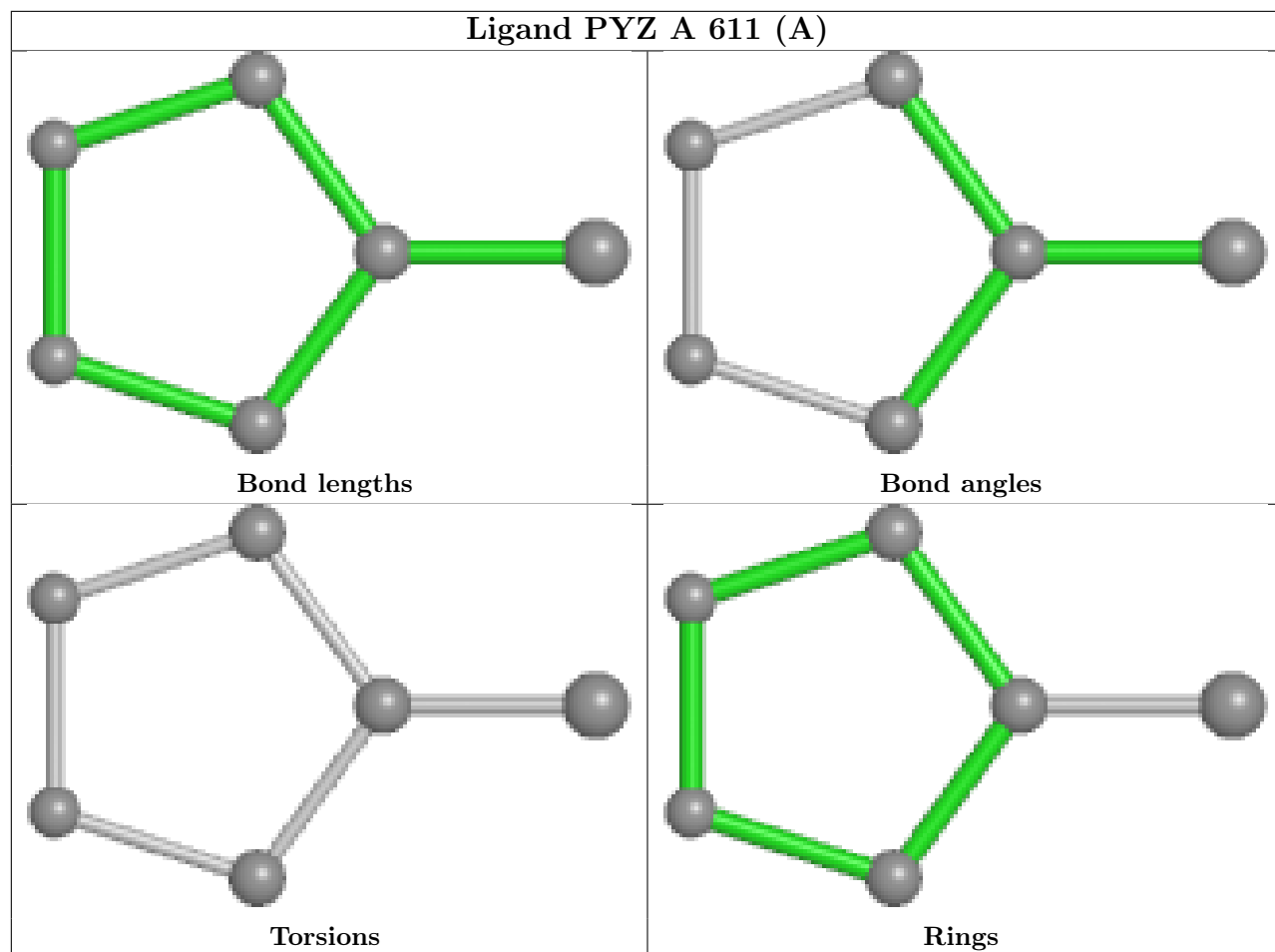
Mol	Chain	Res	Type	Atoms
3	A	601	T27	N3-C11-N1-C6
3	A	601	T27	C10-C11-N1-C6
5	B	505	EDO	O1-C1-C2-O2

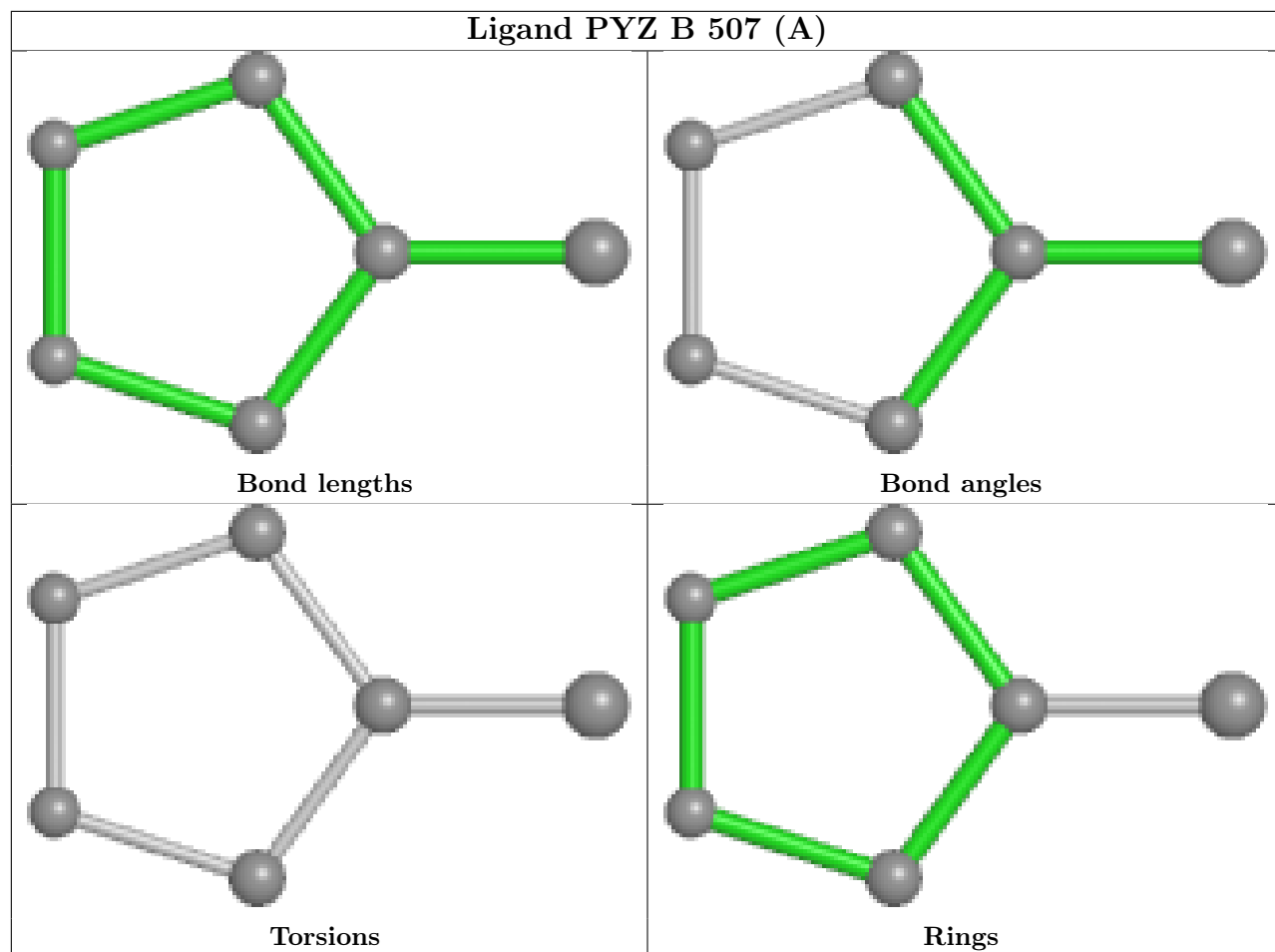
There are no ring outliers.

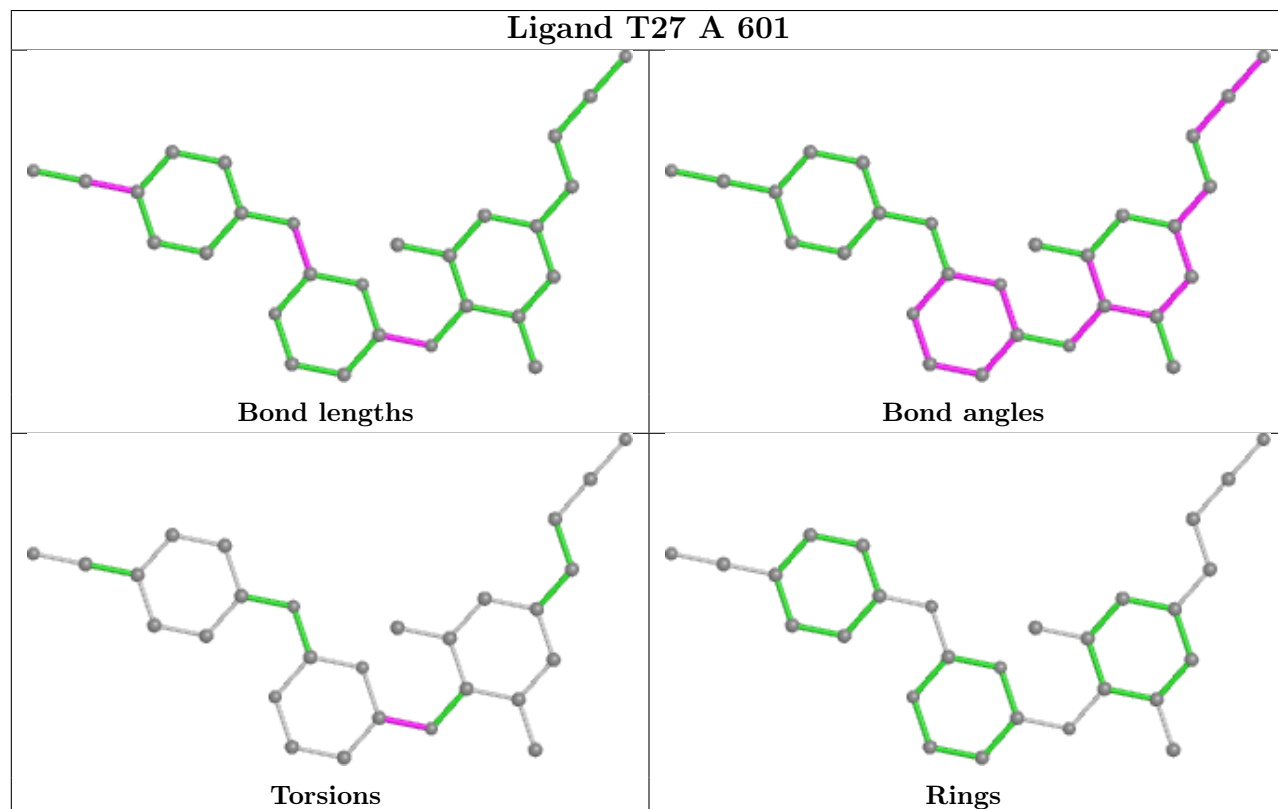
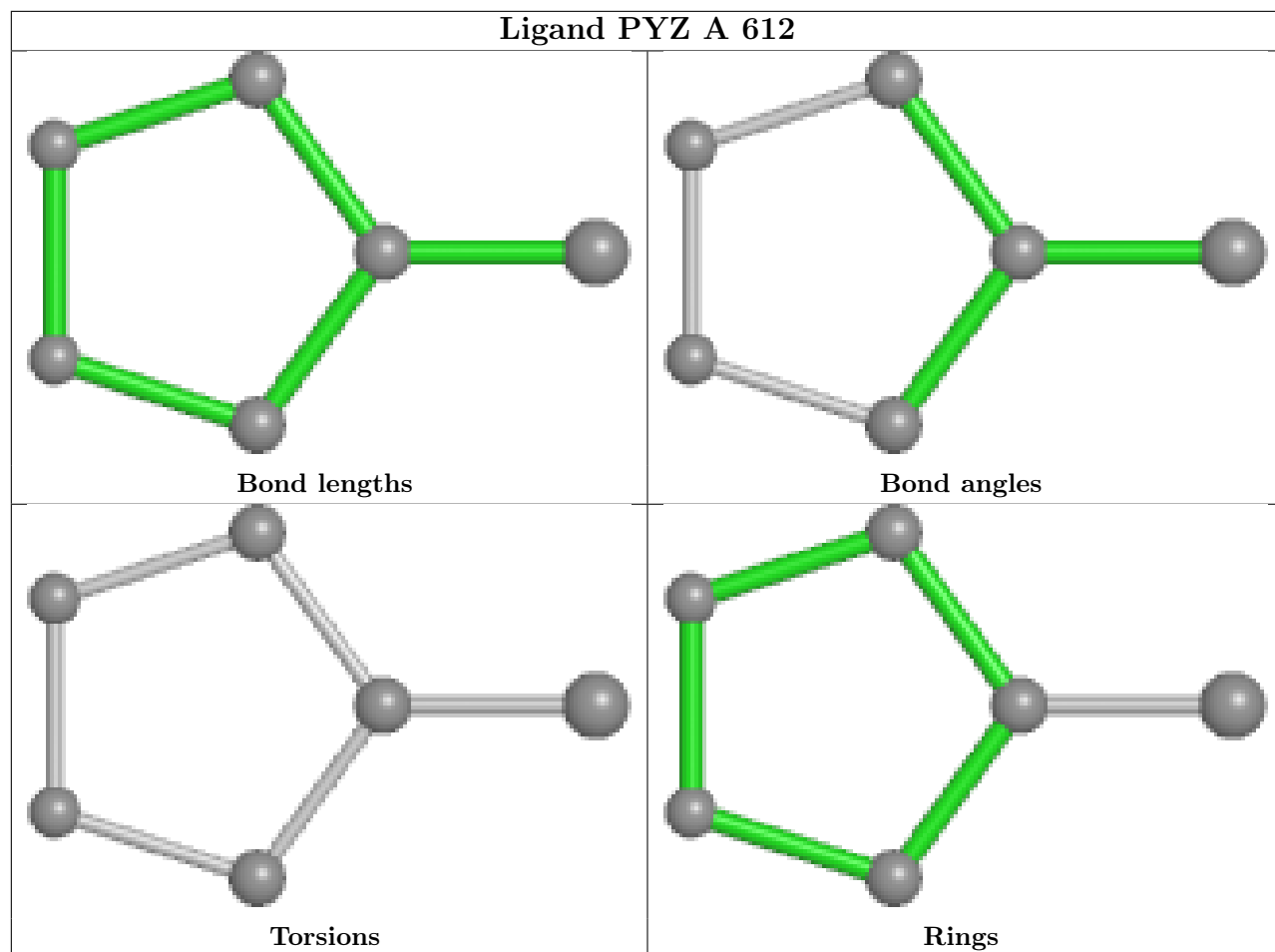
6 monomers are involved in 20 short contacts:

Mol	Chain	Res	Type	Clashes	Symm-Clashes
4	A	603	DMS	1	0
8	B	507[A]	PYZ	5	0
4	B	503	DMS	1	0
8	A	612	PYZ	6	0
3	A	601	T27	2	0
4	B	501	DMS	5	0

The following is a two-dimensional graphical depiction of Mogul quality analysis of bond lengths, bond angles, torsion angles, and ring geometry for all instances of the Ligand of Interest. In addition, ligands with molecular weight > 250 and outliers as shown on the validation Tables will also be included. For torsion angles, if less than 5% of the Mogul distribution of torsion angles is within 10 degrees of the torsion angle in question, then that torsion angle is considered an outlier. Any bond that is central to one or more torsion angles identified as an outlier by Mogul will be highlighted in the graph. For rings, the root-mean-square deviation (RMSD) between the ring in question and similar rings identified by Mogul is calculated over all ring torsion angles. If the average RMSD is greater than 60 degrees and the minimal RMSD between the ring in question and any Mogul-identified rings is also greater than 60 degrees, then that ring is considered an outlier. The outliers are highlighted in purple. The color gray indicates Mogul did not find sufficient equivalents in the CSD to analyse the geometry.







5.7 Other polymers [i](#)

There are no such residues in this entry.

5.8 Polymer linkage issues [i](#)

There are no chain breaks in this entry.

6 Fit of model and data

6.1 Protein, DNA and RNA chains

In the following table, the column labelled ‘#RSRZ > 2’ contains the number (and percentage) of RSRZ outliers, followed by percent RSRZ outliers for the chain as percentile scores relative to all X-ray entries and entries of similar resolution. The OWAB column contains the minimum, median, 95th percentile and maximum values of the occupancy-weighted average B-factor per residue. The column labelled ‘Q < 0.9’ lists the number of (and percentage) of residues with an average occupancy less than 0.9.

Mol	Chain	Analysed	<RSRZ>	#RSRZ>2	OWAB(Å ²)	Q<0.9
1	A	556/557 (99%)	0.25	37 (6%) 17 19	19, 41, 91, 166	0
2	B	415/428 (96%)	0.49	33 (7%) 12 13	20, 42, 90, 164	0
All	All	971/985 (98%)	0.35	70 (7%) 15 16	19, 41, 91, 166	0

All (70) RSRZ outliers are listed below:

Mol	Chain	Res	Type	RSRZ
2	B	92	LEU	13.0
2	B	5	ILE	7.1
2	B	88	TRP	6.9
2	B	90	VAL	6.7
1	A	286	THR	5.7
1	A	67	ASP	5.6
2	B	95	PRO	5.6
1	A	65	LYS	5.3
1	A	69	THR	5.2
2	B	89	GLU	5.2
2	B	93	GLY	5.2
1	A	285	GLY	5.1
1	A	218	ASP	4.9
1	A	221	HIS	4.8
1	A	116	PHE	4.7
1	A	220	LYS	4.5
2	B	91	GLN	4.2
2	B	356	ARG	4.2
1	A	72	ARG	3.9
1	A	115	TYR	3.8
2	B	359	GLY	3.7
1	A	287	LYS	3.6
1	A	68	SER	3.6
1	A	92	LEU	3.6

Continued on next page...

Continued from previous page...

Mol	Chain	Res	Type	RSRZ
1	A	552	VAL	3.6
2	B	357	MET	3.6
2	B	168	LEU	3.5
2	B	67	ASP	3.4
1	A	70	LYS	3.4
2	B	358	ARG	3.3
2	B	229	TRP	3.2
1	A	284	ARG	3.1
2	B	8	VAL	3.0
2	B	212	TRP	3.0
2	B	94	ILE	3.0
2	B	202	ILE	2.8
1	A	294	PRO	2.8
1	A	63	ILE	2.8
1	A	71	TRP	2.7
1	A	289	LEU	2.7
1	A	64	LYS	2.6
1	A	546	GLU	2.6
2	B	284	ARG	2.6
2	B	209	LEU	2.6
1	A	544	GLY	2.6
2	B	6	GLU	2.5
1	A	553	SER	2.5
2	B	300	GLU	2.5
2	B	214	LEU	2.5
1	A	554	ALA	2.4
1	A	91	GLN	2.4
1	A	-1	MET	2.4
1	A	219	LYS	2.4
2	B	297	GLU	2.3
2	B	171	PHE	2.3
2	B	417	VAL	2.3
1	A	288	ALA	2.2
1	A	223	LYS	2.2
1	A	292	VAL	2.2
2	B	361	HIS	2.2
2	B	170	PRO	2.2
1	A	550	LYS	2.1
1	A	290	THR	2.1
1	A	74	LEU	2.1
1	A	448	ARG	2.1
1	A	211	ARG	2.1

Continued on next page...

Continued from previous page...

Mol	Chain	Res	Type	RSRZ
2	B	7	THR	2.1
2	B	167	ILE	2.0
2	B	231	GLY	2.0
2	B	211	ARG	2.0

6.2 Non-standard residues in protein, DNA, RNA chains [i](#)

There are no non-standard protein/DNA/RNA residues in this entry.

6.3 Carbohydrates [i](#)

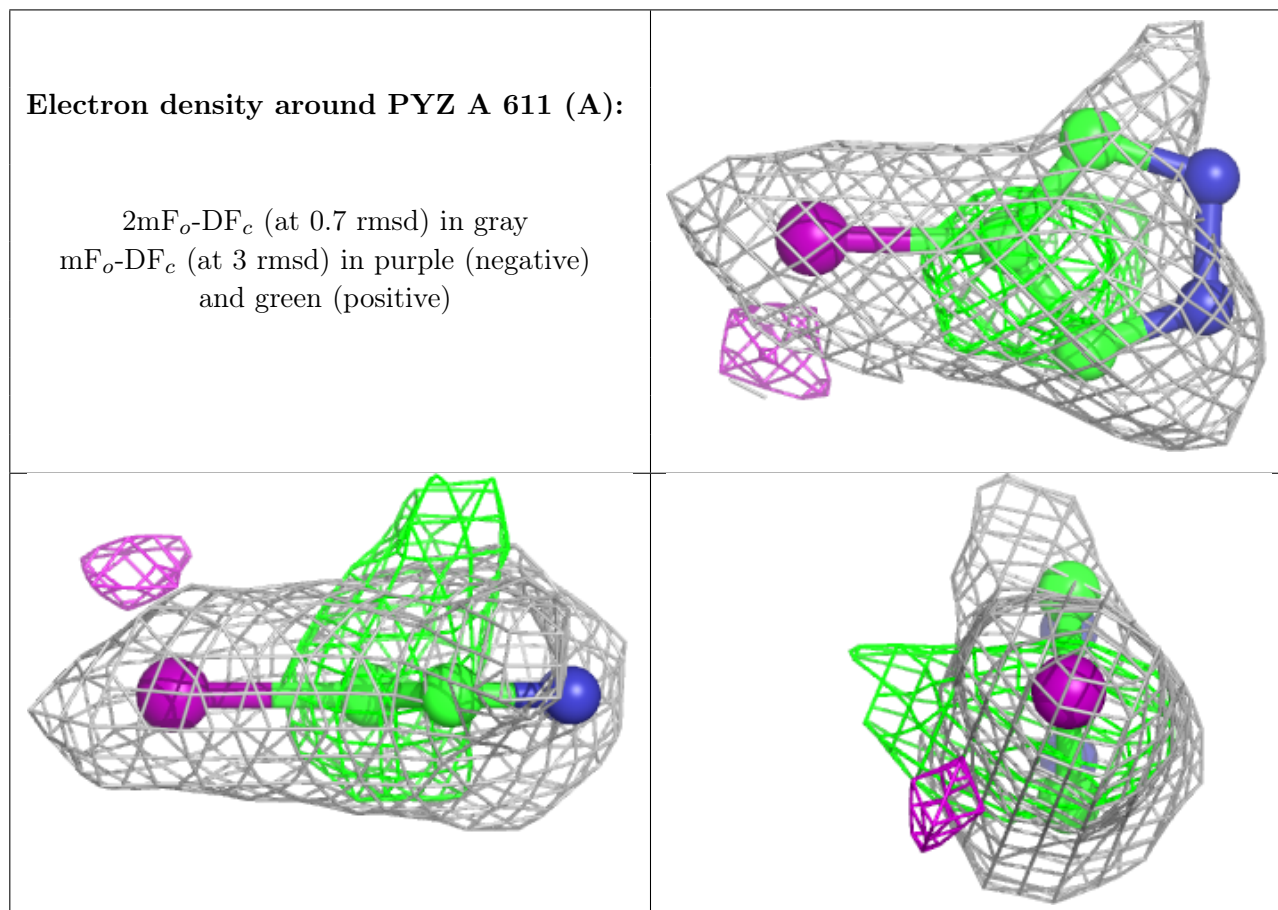
There are no monosaccharides in this entry.

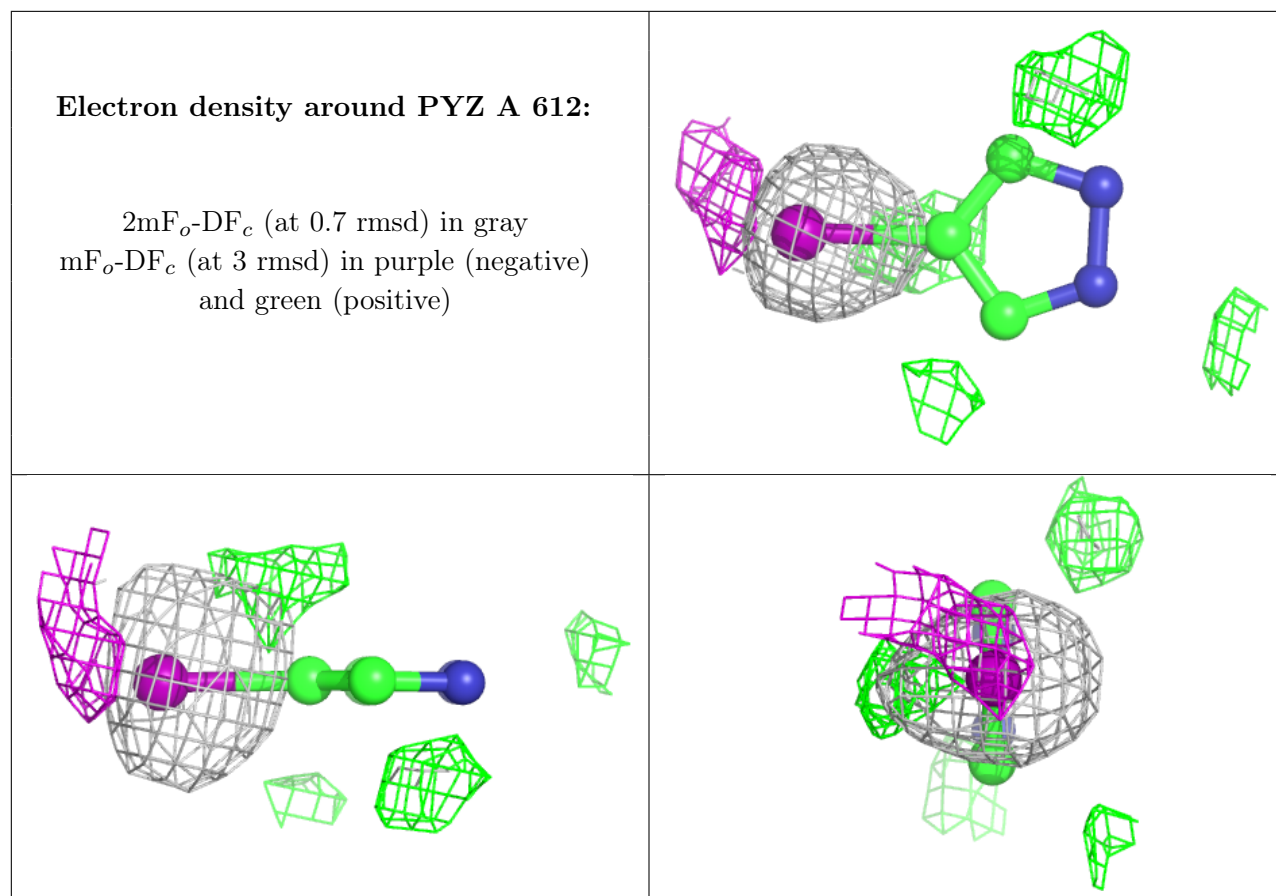
6.4 Ligands [i](#)

In the following table, the Atoms column lists the number of modelled atoms in the group and the number defined in the chemical component dictionary. The B-factors column lists the minimum, median, 95th percentile and maximum values of B factors of atoms in the group. The column labelled 'Q< 0.9' lists the number of atoms with occupancy less than 0.9.

Mol	Type	Chain	Res	Atoms	RSCC	RSR	B-factors(Å ²)	Q<0.9
8	PYZ	A	611[A]	6/6	0.68	0.33	48,51,55,91	6
5	EDO	A	605	4/4	0.84	0.17	46,49,56,57	0
5	EDO	A	604	4/4	0.84	0.45	47,50,54,54	0
7	SO4	A	608	5/5	0.86	0.25	77,81,84,91	0
8	PYZ	A	612	6/6	0.86	0.43	50,53,55,55	6
7	SO4	A	610	5/5	0.87	0.47	70,72,82,85	0
5	EDO	B	505	4/4	0.89	0.48	60,61,64,68	0
4	DMS	B	503	4/4	0.90	0.21	53,54,55,66	0
6	MG	A	607	1/1	0.91	0.11	59,59,59,59	0
7	SO4	A	609	5/5	0.92	0.27	56,68,77,78	0
4	DMS	B	501	4/4	0.92	0.18	47,55,58,65	0
7	SO4	B	506	5/5	0.92	0.17	51,58,70,73	0
4	DMS	A	602	4/4	0.92	0.14	59,62,64,64	0
5	EDO	A	606	4/4	0.92	0.23	29,36,38,42	0
8	PYZ	B	507[A]	6/6	0.93	0.27	43,46,53,61	6
5	EDO	B	504	4/4	0.94	0.22	41,43,47,58	0
4	DMS	A	603	4/4	0.96	0.22	37,44,47,54	0
3	T27	A	601	28/28	0.97	0.14	24,28,34,39	0
4	DMS	B	502	4/4	0.97	0.17	36,40,49,51	0

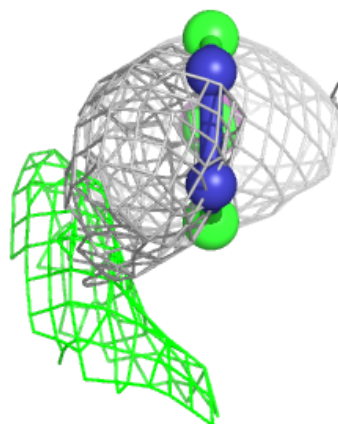
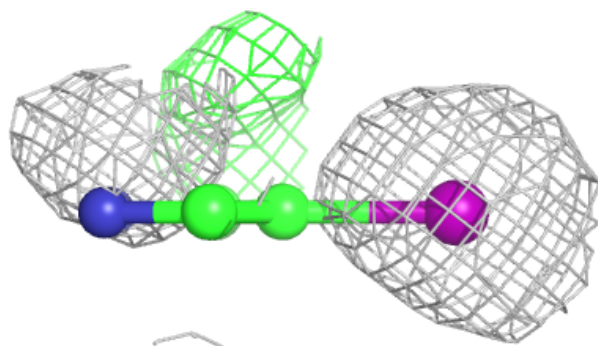
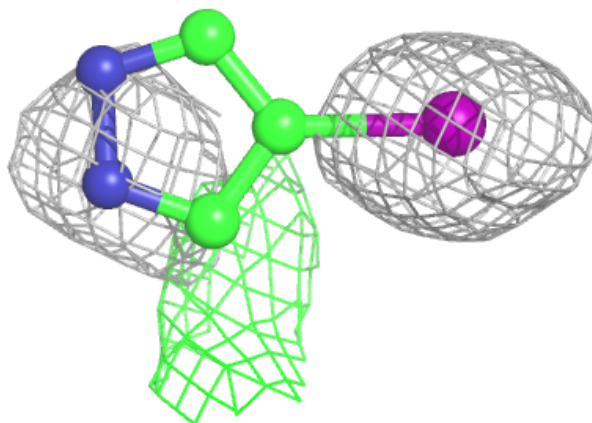
The following is a graphical depiction of the model fit to experimental electron density of all instances of the Ligand of Interest. In addition, ligands with molecular weight > 250 and outliers as shown on the geometry validation Tables will also be included. Each fit is shown from different orientation to approximate a three-dimensional view.

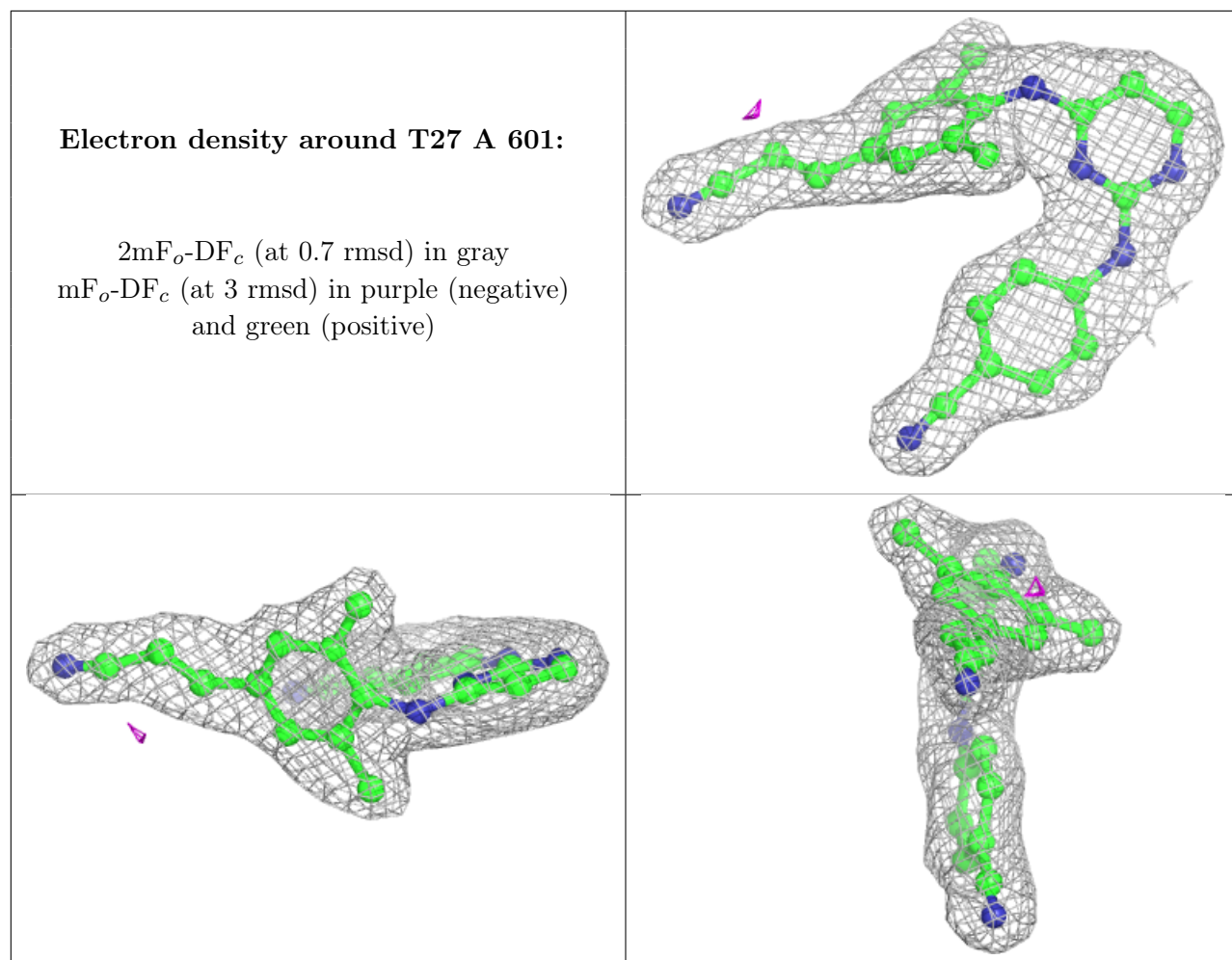




Electron density around PYZ B 507 (A):

$2mF_o-DF_c$ (at 0.7 rmsd) in gray
 mF_o-DF_c (at 3 rmsd) in purple (negative)
and green (positive)





6.5 Other polymers [i](#)

There are no such residues in this entry.