



Full wwPDB X-ray Structure Validation Report ⓘ

Aug 30, 2022 – 06:08 PM JST

PDB ID : 7XGP
Title : Human renin in complex with compound3
Authors : Kashima, A.
Deposited on : 2022-04-05
Resolution : 2.65 Å(reported)

This is a Full wwPDB X-ray Structure Validation Report for a publicly released PDB entry.

We welcome your comments at validation@mail.wwpdb.org

A user guide is available at

<https://www.wwpdb.org/validation/2017/XrayValidationReportHelp>

with specific help available everywhere you see the ⓘ symbol.

The types of validation reports are described at <http://www.wwpdb.org/validation/2017/FAQs#types>.

The following versions of software and data (see [references ⓘ](#)) were used in the production of this report:

MolProbity : 4.02b-467
Mogul : 1.8.5 (274361), CSD as541be (2020)
Xtriage (Phenix) : 1.13
EDS : 2.30
buster-report : 1.1.7 (2018)
Percentile statistics : 20191225.v01 (using entries in the PDB archive December 25th 2019)
Refmac : 5.8.0158
CCP4 : 7.0.044 (Gargrove)
Ideal geometry (proteins) : Engh & Huber (2001)
Ideal geometry (DNA, RNA) : Parkinson et al. (1996)
Validation Pipeline (wwPDB-VP) : 2.30

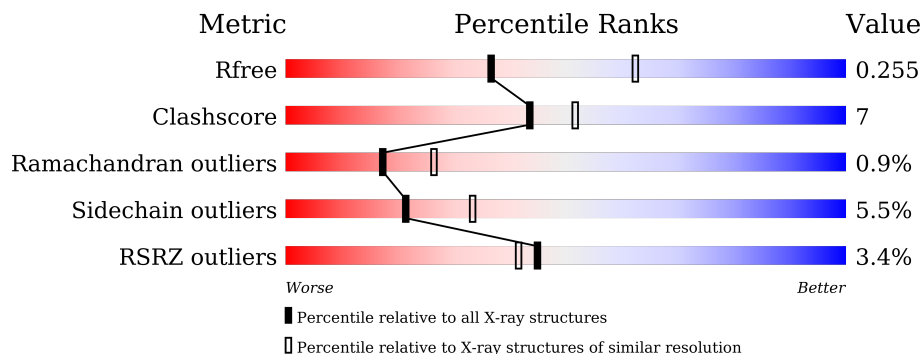
1 Overall quality at a glance

The following experimental techniques were used to determine the structure:

X-RAY DIFFRACTION

The reported resolution of this entry is 2.65 Å.

Percentile scores (ranging between 0-100) for global validation metrics of the entry are shown in the following graphic. The table shows the number of entries on which the scores are based.



Metric	Whole archive (#Entries)	Similar resolution (#Entries, resolution range(Å))
R_{free}	130704	1332 (2.68-2.64)
Clashscore	141614	1374 (2.68-2.64)
Ramachandran outliers	138981	1349 (2.68-2.64)
Sidechain outliers	138945	1349 (2.68-2.64)
RSRZ outliers	127900	1318 (2.68-2.64)

The table below summarises the geometric issues observed across the polymeric chains and their fit to the electron density. The red, orange, yellow and green segments of the lower bar indicate the fraction of residues that contain outliers for ≥ 3 , 2, 1 and 0 types of geometric quality criteria respectively. A grey segment represents the fraction of residues that are not modelled. The numeric value for each fraction is indicated below the corresponding segment, with a dot representing fractions $\leq 5\%$. The upper red bar (where present) indicates the fraction of residues that have poor fit to the electron density. The numeric value is given above the bar.

Mol	Chain	Length	Quality of chain
1	A	340	 5% (Poor fit), 82% (0-1 outliers), 16% (2-3 outliers), . (4+ outliers)
1	B	340	 2% (Poor fit), 84% (0-1 outliers), 13% (2-3 outliers), . (4+ outliers)

The following table lists non-polymeric compounds, carbohydrate monomers and non-standard residues in protein, DNA, RNA chains that are outliers for geometric or electron-density-fit criteria:

Mol	Type	Chain	Res	Chirality	Geometry	Clashes	Electron density
3	UNL	B	402	-	-	X	-

2 Entry composition [i](#)

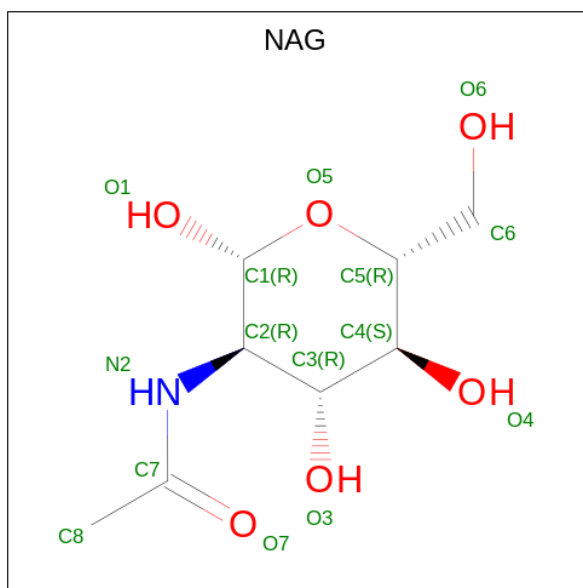
There are 3 unique types of molecules in this entry. The entry contains 5326 atoms, of which 0 are hydrogens and 0 are deuteriums.

In the tables below, the ZeroOcc column contains the number of atoms modelled with zero occupancy, the AltConf column contains the number of residues with at least one atom in alternate conformation and the Trace column contains the number of residues modelled with at most 2 atoms.

- Molecule 1 is a protein called Renin.

Mol	Chain	Residues	Atoms					ZeroOcc	AltConf	Trace
			Total	C	N	O	S			
1	A	340	Total 2621	C 1672	N 424	O 511	S 14	0	0	0
1	B	339	Total 2613	C 1666	N 423	O 510	S 14	0	0	0

- Molecule 2 is 2-acetamido-2-deoxy-beta-D-glucopyranose (three-letter code: NAG) (formula: $C_8H_{15}NO_6$).



Mol	Chain	Residues	Atoms				ZeroOcc	AltConf
			Total	C	N	O		
2	A	1	Total 14	C 8	N 1	O 5	0	0
2	B	1	Total 14	C 8	N 1	O 5	0	0

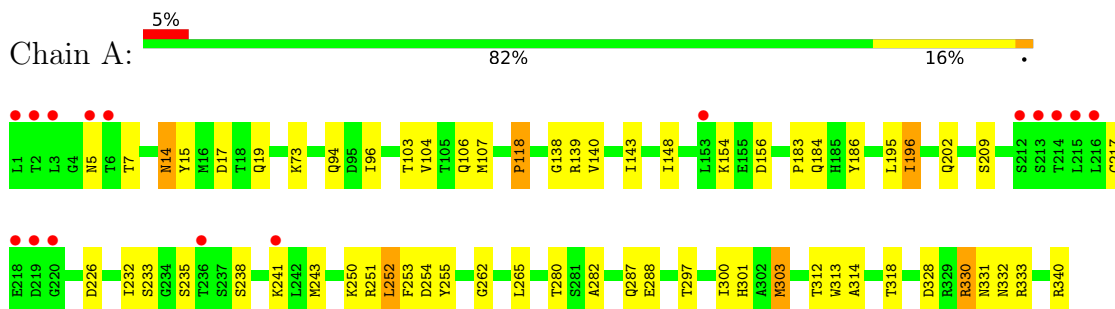
- Molecule 3 is UNKNOWN LIGAND (three-letter code: UNL) (formula:) (labeled as "Ligand of Interest" by depositor).

Mol	Chain	Residues	Atoms				ZeroOcc	AltConf
			Total	C	N	O		
3	A	1	32	22	6	4	0	0
3	B	1	32	22	6	4	0	0

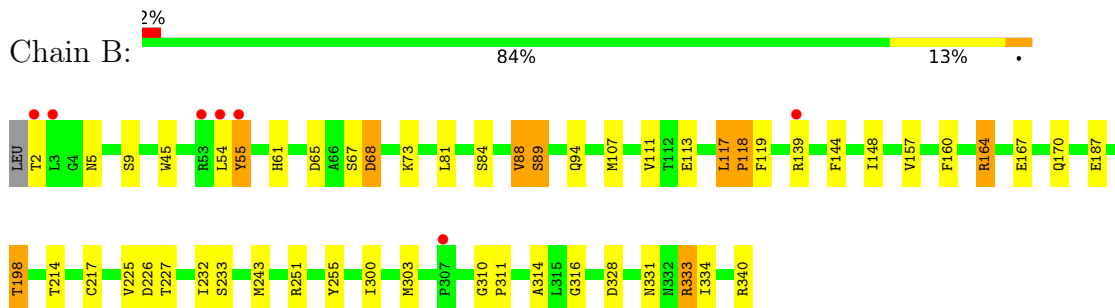
3 Residue-property plots [i](#)

These plots are drawn for all protein, RNA, DNA and oligosaccharide chains in the entry. The first graphic for a chain summarises the proportions of the various outlier classes displayed in the second graphic. The second graphic shows the sequence view annotated by issues in geometry and electron density. Residues are color-coded according to the number of geometric quality criteria for which they contain at least one outlier: green = 0, yellow = 1, orange = 2 and red = 3 or more. A red dot above a residue indicates a poor fit to the electron density ($RSRZ > 2$). Stretches of 2 or more consecutive residues without any outlier are shown as a green connector. Residues present in the sample, but not in the model, are shown in grey.

- Molecule 1: Renin



- Molecule 1: Renin



4 Data and refinement statistics i

Property	Value	Source
Space group	P 21 3	Depositor
Cell constants a, b, c, α , β , γ	141.02Å 141.02Å 141.02Å 90.00° 90.00° 90.00°	Depositor
Resolution (Å)	47.01 – 2.65 47.01 – 2.65	Depositor EDS
% Data completeness (in resolution range)	100.0 (47.01-2.65) 100.0 (47.01-2.65)	Depositor EDS
R_{merge}	0.10	Depositor
R_{sym}	(Not available)	Depositor
$\langle I/\sigma(I) \rangle$ ¹	1.65 (at 2.65Å)	Xtrriage
Refinement program	REFMAC 5.8.0232	Depositor
R, R_{free}	0.198 , 0.254 0.202 , 0.255	Depositor DCC
R_{free} test set	1373 reflections (5.00%)	wwPDB-VP
Wilson B-factor (Å ²)	70.4	Xtrriage
Anisotropy	0.000	Xtrriage
Bulk solvent k_{sol} (e/Å ³), B_{sol} (Å ²)	0.33 , 34.9	EDS
L-test for twinning ²	$\langle L \rangle = 0.50$, $\langle L^2 \rangle = 0.33$	Xtrriage
Estimated twinning fraction	0.020 for l,-k,h	Xtrriage
F_o, F_c correlation	0.95	EDS
Total number of atoms	5326	wwPDB-VP
Average B, all atoms (Å ²)	75.0	wwPDB-VP

Xtrriage's analysis on translational NCS is as follows: *The largest off-origin peak in the Patterson function is 2.44% of the height of the origin peak. No significant pseudotranslation is detected.*

¹Intensities estimated from amplitudes.

²Theoretical values of $\langle |L| \rangle$, $\langle L^2 \rangle$ for acentric reflections are 0.5, 0.333 respectively for untwinned datasets, and 0.375, 0.2 for perfectly twinned datasets.

5 Model quality [i](#)

5.1 Standard geometry [i](#)

Bond lengths and bond angles in the following residue types are not validated in this section: UNL, NAG

The Z score for a bond length (or angle) is the number of standard deviations the observed value is removed from the expected value. A bond length (or angle) with $|Z| > 5$ is considered an outlier worth inspection. RMSZ is the root-mean-square of all Z scores of the bond lengths (or angles).

Mol	Chain	Bond lengths		Bond angles	
		RMSZ	# Z >5	RMSZ	# Z >5
1	A	0.69	0/2681	0.88	1/3636 (0.0%)
1	B	0.69	0/2673	0.87	0/3625
All	All	0.69	0/5354	0.88	1/7261 (0.0%)

Chiral center outliers are detected by calculating the chiral volume of a chiral center and verifying if the center is modelled as a planar moiety or with the opposite hand. A planarity outlier is detected by checking planarity of atoms in a peptide group, atoms in a mainchain group or atoms of a sidechain that are expected to be planar.

Mol	Chain	#Chirality outliers	#Planarity outliers
1	B	0	1

There are no bond length outliers.

All (1) bond angle outliers are listed below:

Mol	Chain	Res	Type	Atoms	Z	Observed($^{\circ}$)	Ideal($^{\circ}$)
1	A	118	PRO	N-CA-CB	-5.37	96.69	102.60

There are no chirality outliers.

All (1) planarity outliers are listed below:

Mol	Chain	Res	Type	Group
1	B	5	ASN	Peptide

5.2 Too-close contacts [i](#)

In the following table, the Non-H and H(model) columns list the number of non-hydrogen atoms and hydrogen atoms in the chain respectively. The H(added) column lists the number of hydrogen atoms added and optimized by MolProbity. The Clashes column lists the number of clashes within

the asymmetric unit, whereas Symm-Clashes lists symmetry-related clashes.

Mol	Chain	Non-H	H(model)	H(added)	Clashes	Symm-Clashes
1	A	2621	0	2555	43	0
1	B	2613	0	2541	28	0
2	A	14	0	13	0	0
2	B	14	0	13	0	0
3	A	32	0	0	1	0
3	B	32	0	0	2	0
All	All	5326	0	5122	70	0

The all-atom clashscore is defined as the number of clashes found per 1000 atoms (including hydrogen atoms). The all-atom clashscore for this structure is 7.

All (70) close contacts within the same asymmetric unit are listed below, sorted by their clash magnitude.

Atom-1	Atom-2	Interatomic distance (Å)	Clash overlap (Å)
1:B:94:GLN:HB2	1:B:107:MET:CE	2.16	0.76
1:A:243:MET:HG3	1:A:255:TYR:CD2	2.26	0.70
1:A:233:SER:OG	1:A:314:ALA:HB3	2.00	0.62
1:A:217:CYS:SG	1:A:217:CYS:O	2.59	0.60
1:A:14:ASN:HD22	1:A:14:ASN:C	2.07	0.58
1:A:243:MET:HG3	1:A:255:TYR:CG	2.39	0.58
1:A:14:ASN:HD21	1:A:17:ASP:H	1.55	0.54
1:A:250:LYS:HG3	1:A:255:TYR:CZ	2.41	0.54
1:A:14:ASN:HD21	1:A:17:ASP:HA	1.73	0.54
1:A:288:GLU:HG3	1:B:167:GLU:O	2.08	0.54
1:A:233:SER:HB2	1:A:303:MET:HB2	1.89	0.54
1:B:328:ASP:OD2	1:B:333:ARG:HD2	2.08	0.53
1:B:331:ASN:HB2	1:B:333:ARG:HD2	1.91	0.53
1:A:106:GLN:OE1	1:A:143:ILE:HA	2.09	0.53
1:B:157:VAL:HG22	1:B:328:ASP:HA	1.90	0.53
1:B:61:HIS:HE1	1:B:119:PHE:O	1.92	0.52
1:A:107:MET:HB3	1:A:140:VAL:HG13	1.91	0.52
1:A:73:LYS:HB2	1:A:94:GLN:HB3	1.92	0.52
1:B:68:ASP:OD1	1:B:68:ASP:N	2.44	0.51
1:B:233:SER:OG	1:B:314:ALA:HB3	2.11	0.51
1:A:330:ARG:HG3	1:A:331:ASN:OD1	2.12	0.50
1:B:226:ASP:OD2	3:B:402:UNL:N31	2.45	0.49
1:B:243:MET:HG3	1:B:255:TYR:CG	2.48	0.49
1:A:73:LYS:HG3	1:A:94:GLN:HE21	1.78	0.48
1:A:195:LEU:O	1:A:196:ILE:C	2.53	0.47
1:A:288:GLU:CG	1:B:167:GLU:O	2.62	0.47

Continued on next page...

Continued from previous page...

Atom-1	Atom-2	Interatomic distance (Å)	Clash overlap (Å)
1:B:94:GLN:HB2	1:B:107:MET:HE2	1.93	0.47
1:A:280:THR:HG22	1:A:282:ALA:H	1.80	0.46
1:B:160:PHE:CE2	1:B:227:THR:HB	2.50	0.46
1:A:107:MET:HB3	1:A:140:VAL:CG1	2.46	0.46
1:A:202:GLN:NE2	1:A:312:THR:CB	2.79	0.46
1:A:14:ASN:ND2	1:A:17:ASP:H	2.14	0.45
1:A:183:PRO:HA	1:A:186:TYR:CE2	2.52	0.45
1:A:243:MET:HG3	1:A:255:TYR:CE2	2.51	0.45
1:B:45:TRP:CE3	1:B:111:VAL:HG21	2.51	0.45
1:A:252:LEU:HD13	1:A:253:PHE:CZ	2.51	0.45
1:A:243:MET:CG	1:A:255:TYR:CD2	2.98	0.44
1:B:232:ILE:O	1:B:300:ILE:HA	2.17	0.44
1:A:232:ILE:O	1:A:300:ILE:HA	2.18	0.44
1:A:233:SER:O	1:A:313:TRP:HA	2.18	0.44
1:B:225:VAL:HG21	1:B:334:ILE:HD13	1.98	0.44
1:A:96:ILE:CG2	1:A:103:THR:HG23	2.48	0.43
1:A:233:SER:HB2	1:A:303:MET:CB	2.49	0.43
1:B:243:MET:HG3	1:B:255:TYR:CD1	2.53	0.43
1:A:96:ILE:HG23	1:A:103:THR:HG23	2.00	0.43
1:A:138:GLY:O	1:A:139:ARG:C	2.57	0.43
1:A:148:ILE:HD11	1:A:156:ASP:HA	2.00	0.43
1:B:164:ARG:H	1:B:164:ARG:HG2	1.75	0.43
1:B:217:CYS:SG	1:B:217:CYS:O	2.77	0.42
1:A:254:ASP:OD2	1:A:297:THR:HG23	2.19	0.42
1:A:262:GLY:HA3	1:A:287:GLN:HE22	1.84	0.42
1:A:15:TYR:HB3	1:A:19:GLN:HB2	2.00	0.42
1:A:252:LEU:HD23	1:A:252:LEU:HA	1.90	0.42
1:A:226:ASP:OD1	3:A:402:UNL:N31	2.53	0.41
1:A:235:SER:O	1:A:238:SER:N	2.52	0.41
1:B:65:ASP:OD1	1:B:67:SER:OG	2.38	0.41
1:B:233:SER:HB2	1:B:303:MET:HB3	2.02	0.41
1:B:310:GLY:HA2	1:B:311:PRO:C	2.41	0.41
1:B:144:PHE:CZ	1:B:148:ILE:HD11	2.54	0.41
1:B:81:LEU:HB2	1:B:88:VAL:HG12	2.01	0.41
1:B:187:GLU:HG3	1:B:340:ARG:HD3	2.02	0.41
1:A:73:LYS:HG3	1:A:94:GLN:NE2	2.36	0.41
1:B:226:ASP:O	1:B:316:GLY:HA2	2.20	0.41
3:B:402:UNL:C24	3:B:402:UNL:C13	2.98	0.41
1:B:117:LEU:HA	1:B:118:PRO:HA	1.81	0.41
1:A:195:LEU:HG	1:A:332:ASN:O	2.21	0.40
1:B:89:SER:HB2	1:B:113:GLU:HB2	2.01	0.40

Continued on next page...

Continued from previous page...

Atom-1	Atom-2	Interatomic distance (Å)	Clash overlap (Å)
1:A:14:ASN:HD21	1:A:17:ASP:N	2.19	0.40
1:A:232:ILE:HG13	1:A:318:THR:HB	2.03	0.40
1:A:328:ASP:OD1	1:A:330:ARG:HB3	2.20	0.40

There are no symmetry-related clashes.

5.3 Torsion angles [i](#)

5.3.1 Protein backbone [i](#)

In the following table, the Percentiles column shows the percent Ramachandran outliers of the chain as a percentile score with respect to all X-ray entries followed by that with respect to entries of similar resolution.

The Analysed column shows the number of residues for which the backbone conformation was analysed, and the total number of residues.

Mol	Chain	Analysed	Favoured	Allowed	Outliers	Percentiles	
1	A	338/340 (99%)	324 (96%)	13 (4%)	1 (0%)	41	56
1	B	337/340 (99%)	316 (94%)	16 (5%)	5 (2%)	10	15
All	All	675/680 (99%)	640 (95%)	29 (4%)	6 (1%)	17	26

All (6) Ramachandran outliers are listed below:

Mol	Chain	Res	Type
1	B	139	ARG
1	B	251	ARG
1	A	196	ILE
1	B	214	THR
1	B	55	TYR
1	B	198	THR

5.3.2 Protein sidechains [i](#)

In the following table, the Percentiles column shows the percent sidechain outliers of the chain as a percentile score with respect to all X-ray entries followed by that with respect to entries of similar resolution.

The Analysed column shows the number of residues for which the sidechain conformation was analysed, and the total number of residues.

Mol	Chain	Analysed	Rotameric	Outliers	Percentiles	
1	A	290/290 (100%)	273 (94%)	17 (6%)	19	30
1	B	289/290 (100%)	274 (95%)	15 (5%)	23	36
All	All	579/580 (100%)	547 (94%)	32 (6%)	21	33

All (32) residues with a non-rotameric sidechain are listed below:

Mol	Chain	Res	Type
1	A	5	ASN
1	A	7	THR
1	A	14	ASN
1	A	104	VAL
1	A	118	PRO
1	A	154	LYS
1	A	184	GLN
1	A	209	SER
1	A	241	LYS
1	A	251	ARG
1	A	252	LEU
1	A	265	LEU
1	A	301	HIS
1	A	303	MET
1	A	330	ARG
1	A	333	ARG
1	A	340	ARG
1	B	2	THR
1	B	9	SER
1	B	54	LEU
1	B	55	TYR
1	B	68	ASP
1	B	73	LYS
1	B	84	SER
1	B	88	VAL
1	B	89	SER
1	B	117	LEU
1	B	118	PRO
1	B	164	ARG
1	B	170	GLN
1	B	198	THR
1	B	333	ARG

Sometimes sidechains can be flipped to improve hydrogen bonding and reduce clashes. All (9) such sidechains are listed below:

Mol	Chain	Res	Type
1	A	14	ASN
1	A	94	GLN
1	A	202	GLN
1	A	204	GLN
1	A	287	GLN
1	A	332	ASN
1	B	175	GLN
1	B	194	ASN
1	B	301	HIS

5.3.3 RNA [i](#)

There are no RNA molecules in this entry.

5.4 Non-standard residues in protein, DNA, RNA chains [i](#)

There are no non-standard protein/DNA/RNA residues in this entry.

5.5 Carbohydrates [i](#)

There are no monosaccharides in this entry.

5.6 Ligand geometry [i](#)

Of 4 ligands modelled in this entry, 2 are unknown - leaving 2 for Mogul analysis.

In the following table, the Counts columns list the number of bonds (or angles) for which Mogul statistics could be retrieved, the number of bonds (or angles) that are observed in the model and the number of bonds (or angles) that are defined in the Chemical Component Dictionary. The Link column lists molecule types, if any, to which the group is linked. The Z score for a bond length (or angle) is the number of standard deviations the observed value is removed from the expected value. A bond length (or angle) with $|Z| > 2$ is considered an outlier worth inspection. RMSZ is the root-mean-square of all Z scores of the bond lengths (or angles).

Mol	Type	Chain	Res	Link	Bond lengths			Bond angles		
					Counts	RMSZ	# Z > 2	Counts	RMSZ	# Z > 2
2	NAG	A	401	1	14,14,15	1.14	1 (7%)	17,19,21	1.79	5 (29%)
2	NAG	B	401	1	14,14,15	0.67	0	17,19,21	1.26	1 (5%)

In the following table, the Chirals column lists the number of chiral outliers, the number of chiral centers analysed, the number of these observed in the model and the number defined in the

Chemical Component Dictionary. Similar counts are reported in the Torsion and Rings columns. '-' means no outliers of that kind were identified.

Mol	Type	Chain	Res	Link	Chirals	Torsions	Rings
2	NAG	A	401	1	-	0/6/23/26	0/1/1/1
2	NAG	B	401	1	-	0/6/23/26	0/1/1/1

All (1) bond length outliers are listed below:

Mol	Chain	Res	Type	Atoms	Z	Observed(Å)	Ideal(Å)
2	A	401	NAG	C1-C2	2.08	1.55	1.52

All (6) bond angle outliers are listed below:

Mol	Chain	Res	Type	Atoms	Z	Observed(°)	Ideal(°)
2	A	401	NAG	O5-C5-C6	3.71	113.02	107.20
2	A	401	NAG	O5-C5-C4	-3.17	103.11	110.83
2	A	401	NAG	C3-C4-C5	-2.89	105.08	110.24
2	B	401	NAG	C2-N2-C7	2.43	126.36	122.90
2	A	401	NAG	O4-C4-C3	2.34	115.76	110.35
2	A	401	NAG	C1-O5-C5	2.01	114.92	112.19

There are no chirality outliers.

There are no torsion outliers.

There are no ring outliers.

No monomer is involved in short contacts.

5.7 Other polymers [i](#)

There are no such residues in this entry.

5.8 Polymer linkage issues [i](#)

There are no chain breaks in this entry.

6 Fit of model and data

6.1 Protein, DNA and RNA chains

In the following table, the column labelled ‘#RSRZ > 2’ contains the number (and percentage) of RSRZ outliers, followed by percent RSRZ outliers for the chain as percentile scores relative to all X-ray entries and entries of similar resolution. The OWAB column contains the minimum, median, 95th percentile and maximum values of the occupancy-weighted average B-factor per residue. The column labelled ‘Q < 0.9’ lists the number of (and percentage) of residues with an average occupancy less than 0.9.

Mol	Chain	Analysed	<RSRZ>	#RSRZ>2	OWAB(Å ²)	Q<0.9
1	A	340/340 (100%)	-0.09	16 (4%) 31 28	48, 72, 114, 145	0
1	B	339/340 (99%)	-0.20	7 (2%) 63 59	48, 72, 104, 160	0
All	All	679/680 (99%)	-0.15	23 (3%) 45 41	48, 72, 110, 160	0

All (23) RSRZ outliers are listed below:

Mol	Chain	Res	Type	RSRZ
1	A	215	LEU	6.2
1	A	213	SER	5.0
1	A	1	LEU	4.6
1	B	54	LEU	4.2
1	B	55	TYR	4.2
1	B	3	LEU	3.6
1	A	3	LEU	3.3
1	A	2	THR	3.3
1	B	2	THR	3.2
1	A	220	GLY	2.8
1	A	216	LEU	2.7
1	A	212	SER	2.7
1	A	236	THR	2.7
1	A	214	THR	2.6
1	B	139	ARG	2.3
1	A	218	GLU	2.3
1	A	219	ASP	2.3
1	A	5	ASN	2.2
1	A	6	THR	2.2
1	A	153	LEU	2.0
1	A	241	LYS	2.0
1	B	53	ARG	2.0
1	B	307	PRO	2.0

6.2 Non-standard residues in protein, DNA, RNA chains [i](#)

There are no non-standard protein/DNA/RNA residues in this entry.

6.3 Carbohydrates [i](#)

There are no monosaccharides in this entry.

6.4 Ligands [i](#)

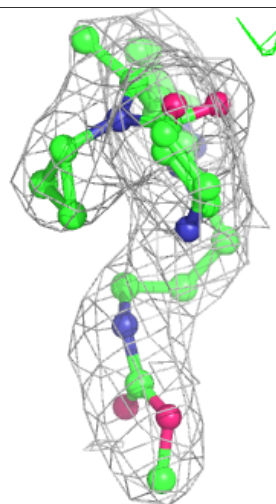
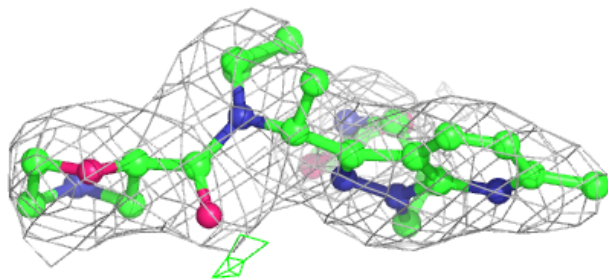
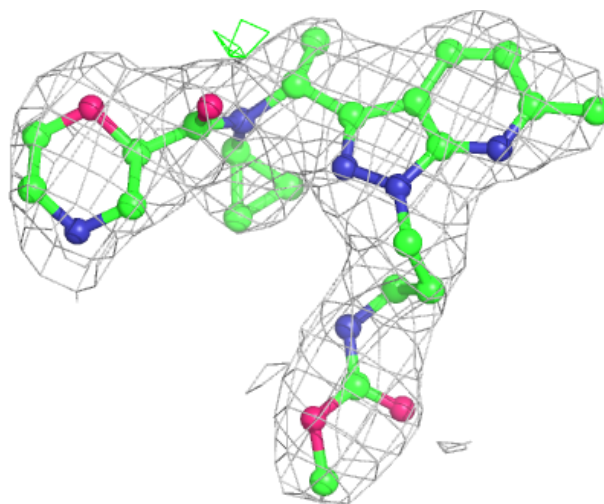
In the following table, the Atoms column lists the number of modelled atoms in the group and the number defined in the chemical component dictionary. The B-factors column lists the minimum, median, 95th percentile and maximum values of B factors of atoms in the group. The column labelled 'Q< 0.9' lists the number of atoms with occupancy less than 0.9.

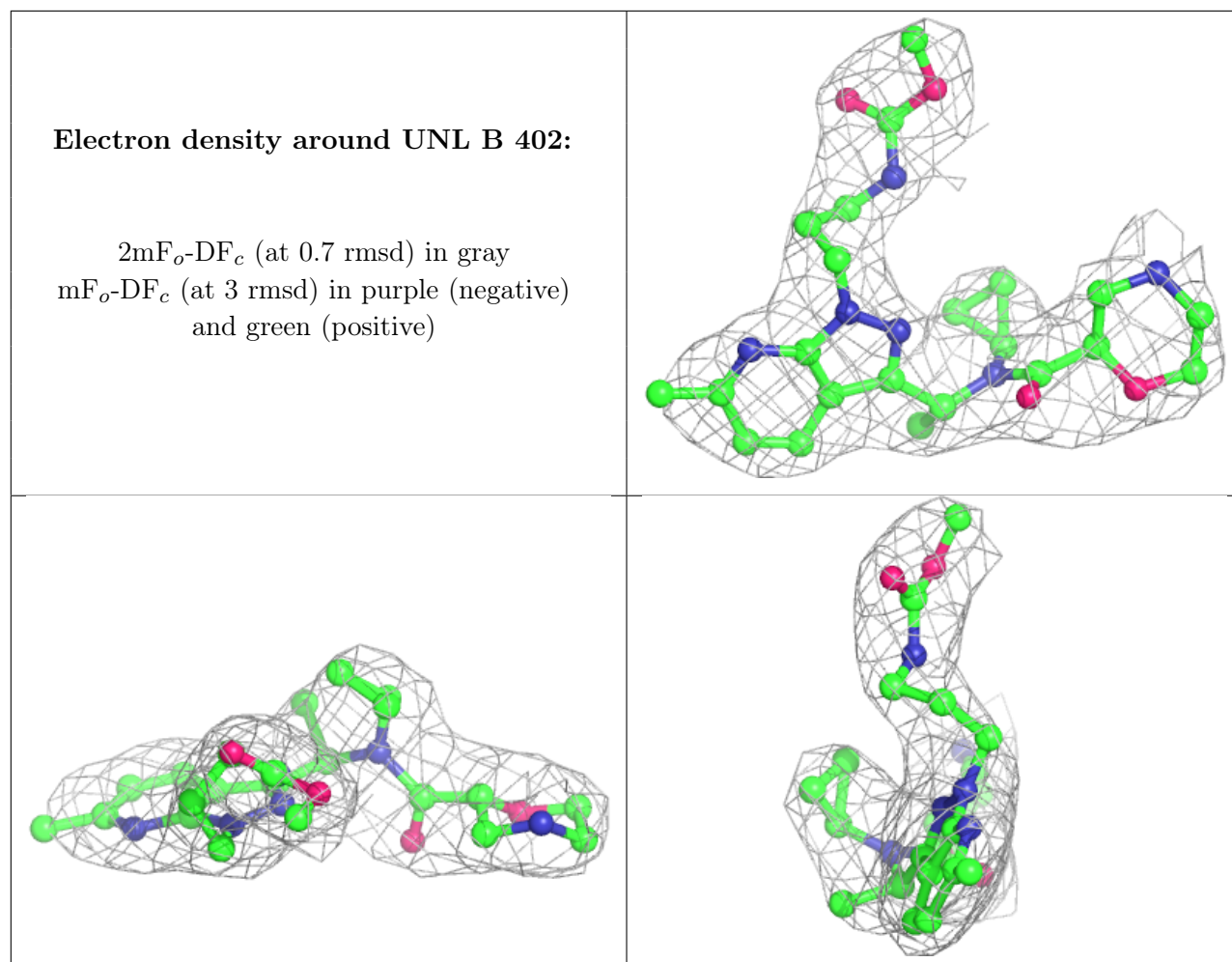
Mol	Type	Chain	Res	Atoms	RSCC	RSR	B-factors(Å ²)	Q<0.9
2	NAG	B	401	14/15	0.84	0.21	99,118,125,132	0
2	NAG	A	401	14/15	0.88	0.11	63,86,97,105	0
3	UNL	A	402	32/-	0.98	0.13	41,53,60,63	0
3	UNL	B	402	32/-	0.98	0.16	47,58,67,69	0

The following is a graphical depiction of the model fit to experimental electron density of all instances of the Ligand of Interest. In addition, ligands with molecular weight > 250 and outliers as shown on the geometry validation Tables will also be included. Each fit is shown from different orientation to approximate a three-dimensional view.

Electron density around UNL A 402:

$2mF_o-DF_c$ (at 0.7 rmsd) in gray
 mF_o-DF_c (at 3 rmsd) in purple (negative)
and green (positive)





6.5 Other polymers [i](#)

There are no such residues in this entry.