



Full wwPDB EM Validation Report ⓘ

Nov 29, 2022 – 01:15 PM JST

PDB ID : 7WGC
EMDB ID : EMD-32483
Title : Neutral Omicron Spike Trimer in complex with ACE2.
Authors : Cui, Z.
Deposited on : 2021-12-28
Resolution : 3.60 Å (reported)

This is a Full wwPDB EM Validation Report for a publicly released PDB entry.

We welcome your comments at validation@mail.wwpdb.org

A user guide is available at

<https://www.wwpdb.org/validation/2017/EMValidationReportHelp>

with specific help available everywhere you see the ⓘ symbol.

The types of validation reports are described at

<http://www.wwpdb.org/validation/2017/FAQs#types>.

The following versions of software and data (see [references ⓘ](#)) were used in the production of this report:

EMDB validation analysis : 0.0.1.dev43
Mogul : 1.8.5 (274361), CSD as541be (2020)
MolProbity : 4.02b-467
Percentile statistics : 20191225.v01 (using entries in the PDB archive December 25th 2019)
MapQ : 1.9.9
Ideal geometry (proteins) : Engh & Huber (2001)
Ideal geometry (DNA, RNA) : Parkinson et al. (1996)
Validation Pipeline (wwPDB-VP) : 2.31.3

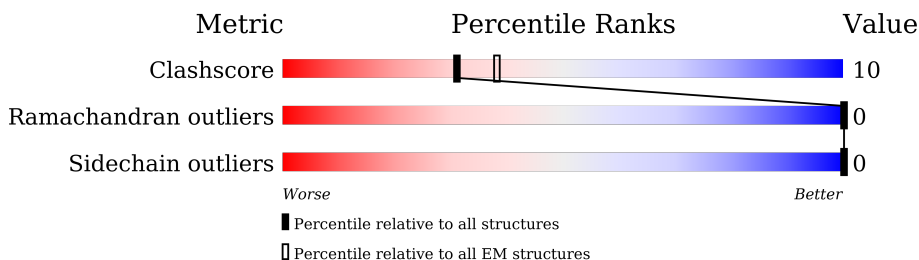
1 Overall quality at a glance

The following experimental techniques were used to determine the structure:

ELECTRON MICROSCOPY

The reported resolution of this entry is 3.60 Å.

Percentile scores (ranging between 0-100) for global validation metrics of the entry are shown in the following graphic. The table shows the number of entries on which the scores are based.



Metric	Whole archive (#Entries)	EM structures (#Entries)
Clashscore	158937	4297
Ramachandran outliers	154571	4023
Sidechain outliers	154315	3826

The table below summarises the geometric issues observed across the polymeric chains and their fit to the map. The red, orange, yellow and green segments of the bar indicate the fraction of residues that contain outliers for ≥ 3 , 2, 1 and 0 types of geometric quality criteria respectively. A grey segment represents the fraction of residues that are not modelled. The numeric value for each fraction is indicated below the corresponding segment, with a dot representing fractions $\leq 5\%$. The upper red bar (where present) indicates the fraction of residues that have poor fit to the EM map (all-atom inclusion $< 40\%$). The numeric value is given above the bar.

Mol	Chain	Length	Quality of chain
1	A	594	<p>70% 78% 22%</p>
2	C	1270	<p>6% 11% 5% 84%</p>

2 Entry composition i

There are 3 unique types of molecules in this entry. The entry contains 6527 atoms, of which 0 are hydrogens and 0 are deuteriums.

In the tables below, the AltConf column contains the number of residues with at least one atom in alternate conformation and the Trace column contains the number of residues modelled with at most 2 atoms.

- Molecule 1 is a protein called Processed angiotensin-converting enzyme 2.

Mol	Chain	Residues	Atoms					AltConf	Trace
			Total	C	N	O	S		
1	A	594	4845	3099	803	914	29	0	0

- Molecule 2 is a protein called Spike glycoprotein.

Mol	Chain	Residues	Atoms					AltConf	Trace
			Total	C	N	O	S		
2	C	201	1612	1039	273	292	8	0	0

There are 44 discrepancies between the modelled and reference sequences:

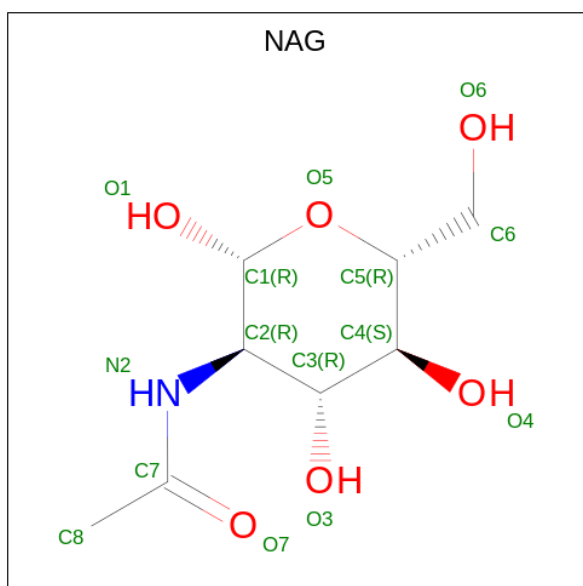
Chain	Residue	Modelled	Actual	Comment	Reference
C	70	VAL	ALA	variant	UNP P0DTC2
C	?	-	HIS	deletion	UNP P0DTC2
C	?	-	VAL	deletion	UNP P0DTC2
C	96	ILE	THR	variant	UNP P0DTC2
C	143	ASP	GLY	variant	UNP P0DTC2
C	?	-	VAL	deletion	UNP P0DTC2
C	?	-	TYR	deletion	UNP P0DTC2
C	209	ILE	-	insertion	UNP P0DTC2
C	210	VAL	-	insertion	UNP P0DTC2
C	211	ARG	ASN	conflict	UNP P0DTC2
C	212	GLU	LEU	conflict	UNP P0DTC2
C	213	PRO	VAL	conflict	UNP P0DTC2
C	214	GLU	ARG	conflict	UNP P0DTC2
C	339	ASP	GLY	variant	UNP P0DTC2
C	371	LEU	SER	variant	UNP P0DTC2
C	373	PRO	SER	variant	UNP P0DTC2
C	375	PHE	SER	variant	UNP P0DTC2
C	417	ASN	LYS	variant	UNP P0DTC2
C	440	LYS	ASN	variant	UNP P0DTC2
C	446	SER	GLY	variant	UNP P0DTC2
C	477	ASN	SER	variant	UNP P0DTC2

Continued on next page...

Continued from previous page...

Chain	Residue	Modelled	Actual	Comment	Reference
C	478	LYS	THR	variant	UNP P0DTC2
C	484	ALA	GLU	variant	UNP P0DTC2
C	493	ARG	GLN	variant	UNP P0DTC2
C	496	SER	GLY	variant	UNP P0DTC2
C	498	ARG	GLN	variant	UNP P0DTC2
C	501	TYR	ASN	variant	UNP P0DTC2
C	505	HIS	TYR	variant	UNP P0DTC2
C	547	LYS	THR	variant	UNP P0DTC2
C	614	GLY	ASP	variant	UNP P0DTC2
C	655	TYR	HIS	variant	UNP P0DTC2
C	679	LYS	ASN	variant	UNP P0DTC2
C	681	HIS	PRO	variant	UNP P0DTC2
C	683	ALA	ARG	variant	UNP P0DTC2
C	685	ALA	ARG	variant	UNP P0DTC2
C	764	LYS	ASN	variant	UNP P0DTC2
C	796	TYR	ASP	variant	UNP P0DTC2
C	856	LYS	ASN	variant	UNP P0DTC2
C	892	PRO	ALA	variant	UNP P0DTC2
C	899	PRO	ALA	variant	UNP P0DTC2
C	942	PRO	ALA	variant	UNP P0DTC2
C	954	HIS	GLN	variant	UNP P0DTC2
C	969	LYS	ASN	variant	UNP P0DTC2
C	981	PHE	LEU	variant	UNP P0DTC2

- Molecule 3 is 2-acetamido-2-deoxy-beta-D-glucopyranose (three-letter code: NAG) (formula: $C_8H_{15}NO_6$).

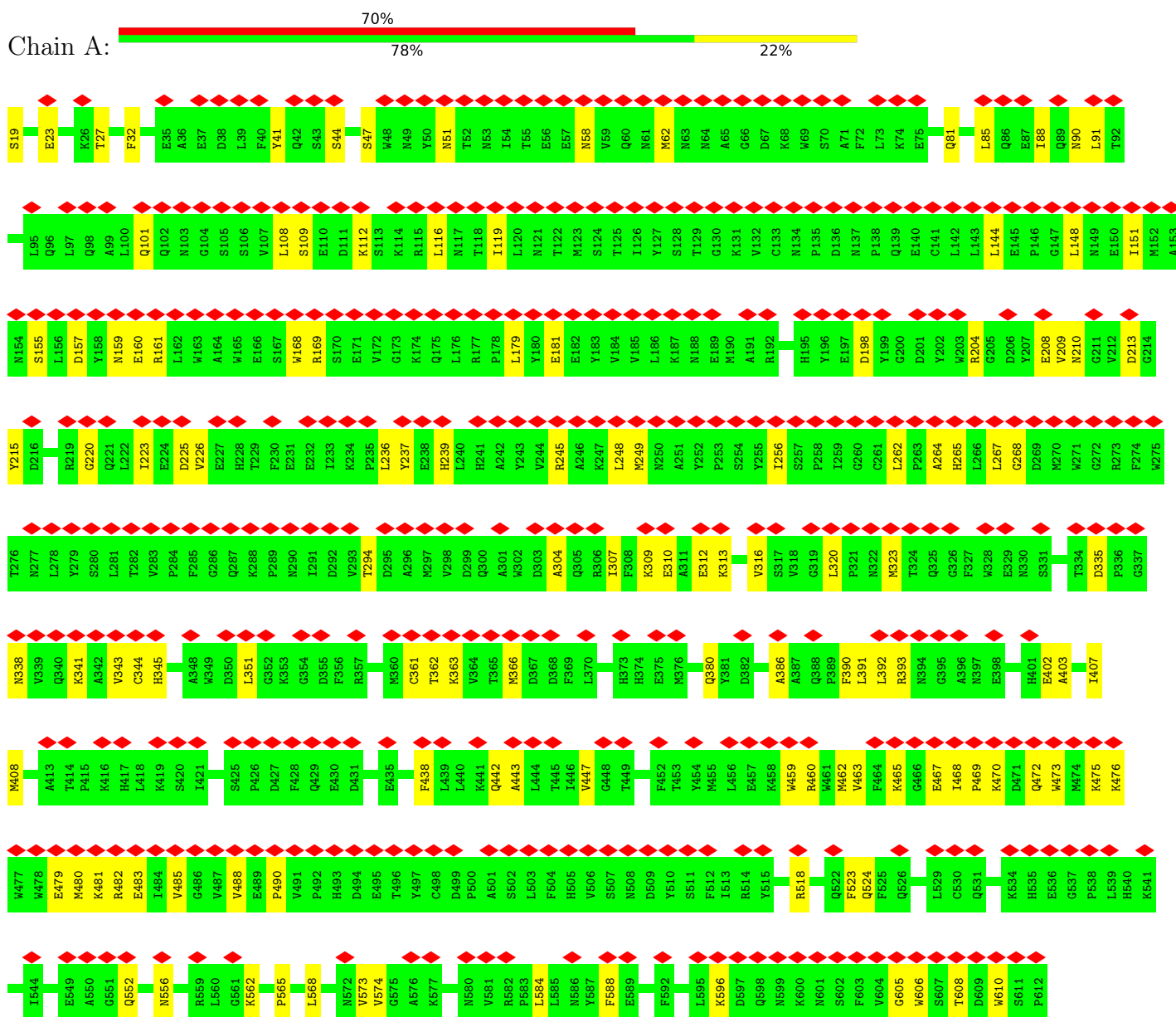


Mol	Chain	Residues	Atoms				AltConf
3	A	1	Total	C	N	O	0
			56	32	4	20	
3	A	1	Total	C	N	O	0
			56	32	4	20	
3	A	1	Total	C	N	O	0
			56	32	4	20	
3	A	1	Total	C	N	O	0
			56	32	4	20	
3	C	1	Total	C	N	O	0
			14	8	1	5	

3 Residue-property plots

These plots are drawn for all protein, RNA, DNA and oligosaccharide chains in the entry. The first graphic for a chain summarises the proportions of the various outlier classes displayed in the second graphic. The second graphic shows the sequence view annotated by issues in geometry and atom inclusion in map density. Residues are color-coded according to the number of geometric quality criteria for which they contain at least one outlier: green = 0, yellow = 1, orange = 2 and red = 3 or more. A red diamond above a residue indicates a poor fit to the EM map for this residue (all-atom inclusion < 40%). Stretches of 2 or more consecutive residues without any outlier are shown as a green connector. Residues present in the sample, but not in the model, are shown in grey.

- Molecule 1: Processed angiotensin-converting enzyme 2



- Molecule 2: Spike glycoprotein

ASP ASN
ASN ASN
THR THR
PHE PHE
VAL VAL
SER SER
GLY GLY
ASN ASN
CYS CYS
ASP ASP
VAL VAL
VAL VAL
ILE ILE
GLY GLY
ILE ILE
VAL VAL
ASN ASN
ASN ASN
THR THR
VAL VAL
TYR TYR
ASP ASP
PRO PRO
LEU LEU
GLN GLN
PRO PRO
GLU GLU
GLY GLY
ASP ASP
SER SER
PHE PHE
LYS LYS
GLU GLU
LEU LEU
TRP TRP
ASP ASP
LYS LYS
TYR TYR
PHE PHE
LYS LYS
ASN ASN
HIS HIS
THR THR
SER SER
PRO PRO
ASP ASP
VAL VAL
ASP ASP
LEU LEU
ALA ALA
LEU LEU
GLY GLY
ASP ASP
ILE ILE
MET MET
VAL VAL
THR THR
GLY GLY
ILE ILE
ASN ASN
ALA ALA
SER SER
VAL VAL
VAL VAL

THR THR
SER SER
CYS CYS
GLN GLN
LYS LYS
SER SER
ILE ILE
ASP ASP
ARG ARG
LEU LEU
CYS CYS
ASN ASN
GLU GLU
VAL VAL
VAL VAL
ALA ALA
LYS LYS
ASN ASN
LEU LEU
VAL VAL
ASN ASN
ASN ASN
GLU GLU
SER SER
LEU LEU
TYR TYR
ILE ILE
TYR TYR
ASP ASP
LEU LEU
PRO PRO
GLN GLN
LEU LEU
GLY GLY
LYS LYS
TYR TYR
ILE ILE
LYS LYS
TRP TRP
LEU LEU
PRO PRO
ASP ASP
TRP TRP
TYR TYR
ILE ILE
PHE PHE
TRP TRP
LYS LYS
GLY GLY
PHE PHE
ILE ILE
ALA ALA
GLY GLY
LEU LEU
ILE ILE
ALA ALA
ILE ILE
VAL VAL
MET MET
VAL VAL
THR THR
GLY GLY
ILE ILE
MET MET
LEU LEU
CYS CYS
SER SER
VAL VAL
MET MET

THR THR
SER SER
CYS CYS
SER SER
CYS CYS
LEU LEU
LYS LYS
GLY GLY
CYS CYS
CYS CYS
SER SER
CYS CYS
GLY GLY
SER SER
CYS CYS
CYS CYS
PHE PHE
ASP ASP
GLU GLU
ASP ASP
SER SER
SER SER
GLU GLU
PRO PRO
VAL VAL
LEU LEU
LEU LEU
LYS LYS
GLY GLY
VAL VAL
LYS LYS
LEU LEU
HIS HIS
TYR TYR
THR THR

4 Experimental information

Property	Value	Source
EM reconstruction method	SINGLE PARTICLE	Depositor
Imposed symmetry	POINT, Not provided	
Number of particles used	293334	Depositor
Resolution determination method	FSC 0.143 CUT-OFF	Depositor
CTF correction method	NONE	Depositor
Microscope	FEI TITAN KRIOS	Depositor
Voltage (kV)	300	Depositor
Electron dose ($e^-/\text{\AA}^2$)	60	Depositor
Minimum defocus (nm)	1500	Depositor
Maximum defocus (nm)	2500	Depositor
Magnification	Not provided	
Image detector	GATAN K3 (6k x 4k)	Depositor
Maximum map value	17.910	Depositor
Minimum map value	-15.931	Depositor
Average map value	0.001	Depositor
Map value standard deviation	0.069	Depositor
Recommended contour level	1.04	Depositor
Map size (\AA)	385.2, 385.2, 385.2	wwPDB
Map dimensions	360, 360, 360	wwPDB
Map angles ($^\circ$)	90.0, 90.0, 90.0	wwPDB
Pixel spacing (\AA)	1.07, 1.07, 1.07	Depositor

5 Model quality [i](#)

5.1 Standard geometry [i](#)

Bond lengths and bond angles in the following residue types are not validated in this section: NAG

The Z score for a bond length (or angle) is the number of standard deviations the observed value is removed from the expected value. A bond length (or angle) with $|Z| > 5$ is considered an outlier worth inspection. RMSZ is the root-mean-square of all Z scores of the bond lengths (or angles).

Mol	Chain	Bond lengths		Bond angles	
		RMSZ	# Z >5	RMSZ	# Z >5
1	A	0.25	0/4981	0.45	0/6767
2	C	0.28	0/1660	0.54	0/2258
All	All	0.26	0/6641	0.47	0/9025

Chiral center outliers are detected by calculating the chiral volume of a chiral center and verifying if the center is modelled as a planar moiety or with the opposite hand. A planarity outlier is detected by checking planarity of atoms in a peptide group, atoms in a mainchain group or atoms of a sidechain that are expected to be planar.

Mol	Chain	#Chirality outliers	#Planarity outliers
2	C	0	2

There are no bond length outliers.

There are no bond angle outliers.

There are no chirality outliers.

All (2) planarity outliers are listed below:

Mol	Chain	Res	Type	Group
2	C	517	LEU	Peptide
2	C	520	ALA	Peptide

5.2 Too-close contacts [i](#)

In the following table, the Non-H and H(model) columns list the number of non-hydrogen atoms and hydrogen atoms in the chain respectively. The H(added) column lists the number of hydrogen atoms added and optimized by MolProbity. The Clashes column lists the number of clashes within the asymmetric unit, whereas Symm-Clashes lists symmetry-related clashes.

Mol	Chain	Non-H	H(model)	H(added)	Clashes	Symm-Clashes
1	A	4845	0	4621	85	0
2	C	1612	0	1549	41	0
3	A	56	0	52	1	0
3	C	14	0	13	0	0
All	All	6527	0	6235	124	0

The all-atom clashscore is defined as the number of clashes found per 1000 atoms (including hydrogen atoms). The all-atom clashscore for this structure is 10.

All (124) close contacts within the same asymmetric unit are listed below, sorted by their clash magnitude.

Atom-1	Atom-2	Interatomic distance (Å)	Clash overlap (Å)
1:A:168:TRP:HD1	1:A:169:ARG:HH11	1.37	0.73
1:A:19:SER:N	2:C:477:ASN:OD1	2.22	0.73
1:A:482:ARG:HH12	1:A:608:THR:HA	1.57	0.69
1:A:208:GLU:OE2	1:A:210:ASN:ND2	2.27	0.67
1:A:109:SER:H	1:A:112:LYS:HE2	1.58	0.67
1:A:573:VAL:HG23	1:A:574:VAL:HG23	1.77	0.66
1:A:159:ASN:OD1	1:A:160:GLU:N	2.28	0.65
1:A:469:PRO:O	1:A:473:TRP:NE1	2.30	0.64
1:A:552:GLN:NE2	1:A:556:ASN:OD1	2.29	0.64
2:C:403:ARG:NH1	2:C:405:ASP:OD1	2.32	0.62
2:C:406:GLU:HG2	2:C:418:ILE:HD12	1.81	0.61
2:C:331:ASN:OD1	2:C:333:THR:N	2.30	0.61
2:C:493:ARG:HA	2:C:493:ARG:NH1	2.15	0.61
1:A:47:SER:O	1:A:51:ASN:ND2	2.33	0.61
1:A:475:LYS:NZ	1:A:479:GLU:HB2	2.15	0.61
2:C:357:ARG:NH1	2:C:358:ILE:O	2.34	0.60
1:A:248:LEU:HD21	1:A:256:ILE:HD13	1.83	0.60
1:A:459:TRP:HA	1:A:462:MET:SD	2.42	0.59
2:C:358:ILE:HB	2:C:395:VAL:HB	1.83	0.59
1:A:392:LEU:HA	1:A:562:LYS:HE3	1.85	0.59
2:C:418:ILE:HA	2:C:422:ASN:HB2	1.85	0.59
2:C:466:ARG:HG2	2:C:468:ILE:HD11	1.85	0.59
2:C:429:PHE:HE1	2:C:514:SER:HB2	1.68	0.59
1:A:480:MET:HA	1:A:483:GLU:HG2	1.85	0.58
2:C:376:THR:HB	2:C:435:ALA:HB3	1.84	0.58
2:C:379:CYS:HB2	2:C:384:PRO:HG3	1.85	0.58
1:A:155:SER:OG	1:A:157:ASP:OD1	2.20	0.58
1:A:294:THR:OG1	1:A:366:MET:SD	2.62	0.58
2:C:335:LEU:HD13	2:C:362:VAL:HG21	1.87	0.57
1:A:108:LEU:HB3	1:A:112:LYS:HG3	1.86	0.56

Continued on next page...

Continued from previous page...

Atom-1	Atom-2	Interatomic distance (Å)	Clash overlap (Å)
1:A:41:TYR:OH	2:C:500:THR:OG1	2.22	0.56
2:C:462:LYS:HB2	2:C:465:GLU:HG3	1.87	0.56
2:C:331:ASN:HB3	2:C:332:ILE:HA	1.88	0.55
1:A:81:GLN:HG2	1:A:101:GLN:HE21	1.70	0.55
2:C:454:ARG:NH1	2:C:456:PHE:O	2.40	0.55
1:A:245:ARG:NH2	1:A:605:GLY:O	2.36	0.55
2:C:486:PHE:O	2:C:488:CYS:N	2.40	0.54
2:C:425:LEU:HD12	2:C:426:PRO:HD2	1.90	0.54
1:A:472:GLN:HG2	1:A:476:LYS:HZ3	1.72	0.54
1:A:338:ASN:O	1:A:341:LYS:NZ	2.37	0.53
1:A:198:ASP:OD2	1:A:465:LYS:NZ	2.38	0.53
1:A:237:TYR:OH	1:A:485:VAL:O	2.26	0.53
1:A:403:ALA:O	1:A:407:ILE:HG12	2.08	0.53
1:A:386:ALA:O	1:A:393:ARG:NH2	2.39	0.53
1:A:119:ILE:HD11	1:A:179:LEU:HG	1.90	0.52
1:A:181:GLU:OE1	1:A:470:LYS:NZ	2.42	0.52
2:C:426:PRO:HG2	2:C:429:PHE:HB2	1.91	0.52
1:A:402:GLU:HB3	1:A:518:ARG:HG3	1.92	0.52
2:C:457:ARG:HG3	2:C:458:LYS:N	2.26	0.51
1:A:161:ARG:NE	1:A:265:HIS:O	2.44	0.50
2:C:460:ASN:OD1	2:C:461:LEU:N	2.44	0.50
1:A:460:ARG:HA	1:A:463:VAL:HG12	1.92	0.50
1:A:213:ASP:N	1:A:213:ASP:OD1	2.44	0.50
2:C:332:ILE:HB	2:C:362:VAL:HG12	1.94	0.50
1:A:245:ARG:HH12	1:A:606:TRP:HA	1.76	0.50
1:A:215:TYR:HE2	1:A:568:LEU:HD12	1.75	0.50
2:C:424:LYS:HB3	2:C:463:PRO:HA	1.95	0.49
1:A:236:LEU:HD21	1:A:588:PHE:HD1	1.77	0.49
2:C:338:PHE:HE1	2:C:362:VAL:HG23	1.78	0.49
2:C:422:ASN:HD21	2:C:454:ARG:H	1.60	0.48
1:A:32:PHE:HE2	1:A:391:LEU:HD21	1.78	0.48
1:A:58:ASN:O	1:A:62:MET:HG2	2.14	0.48
1:A:309:LYS:O	1:A:312:GLU:HG2	2.12	0.48
1:A:157:ASP:OD1	1:A:157:ASP:N	2.46	0.48
2:C:422:ASN:HD21	2:C:454:ARG:N	2.12	0.48
2:C:363:ALA:HB2	2:C:524:VAL:HG22	1.95	0.48
1:A:488:VAL:HG11	1:A:610:TRP:HD1	1.79	0.47
2:C:493:ARG:HA	2:C:493:ARG:HH11	1.79	0.47
1:A:463:VAL:HA	1:A:468:ILE:HD11	1.97	0.47
1:A:245:ARG:O	1:A:249:MET:HG2	2.14	0.47
1:A:32:PHE:CE2	1:A:391:LEU:HD21	2.50	0.47

Continued on next page...

Continued from previous page...

Atom-1	Atom-2	Interatomic distance (Å)	Clash overlap (Å)
1:A:90:ASN:OD1	1:A:91:LEU:N	2.46	0.46
2:C:332:ILE:O	2:C:332:ILE:HG13	2.15	0.46
2:C:434:ILE:HB	2:C:511:VAL:HG23	1.96	0.46
1:A:343:VAL:HG12	1:A:345:HIS:H	1.81	0.46
1:A:344:CYS:HB2	1:A:361:CYS:HB3	1.57	0.46
1:A:44:SER:HB3	1:A:351:LEU:HD13	1.98	0.46
2:C:478:LYS:HD3	2:C:487:ASN:HD22	1.81	0.46
2:C:417:ASN:O	2:C:419:ALA:N	2.43	0.45
1:A:116:LEU:O	1:A:119:ILE:HG22	2.15	0.45
1:A:438:PHE:O	1:A:442:GLN:HG2	2.16	0.45
1:A:488:VAL:HG21	1:A:610:TRP:HE1	1.81	0.45
1:A:309:LYS:O	1:A:313:LYS:HG3	2.16	0.45
1:A:443:ALA:O	1:A:447:VAL:HG12	2.17	0.45
1:A:488:VAL:HG11	1:A:610:TRP:CD1	2.51	0.45
1:A:481:LYS:O	1:A:485:VAL:HG12	2.16	0.45
2:C:472:ILE:HG21	2:C:482:GLY:HA2	1.98	0.45
1:A:144:LEU:HA	1:A:148:LEU:HD12	1.98	0.45
1:A:248:LEU:HD13	1:A:262:LEU:HD11	1.98	0.45
2:C:357:ARG:HH22	2:C:359:SER:HB3	1.82	0.45
1:A:316:VAL:HG21	3:A:703:NAG:H61	1.99	0.45
1:A:366:MET:SD	1:A:366:MET:N	2.89	0.44
1:A:523:PHE:HE2	1:A:584:LEU:HD13	1.82	0.44
2:C:331:ASN:H	2:C:332:ILE:CG2	2.30	0.44
2:C:456:PHE:HD2	2:C:491:PRO:HA	1.83	0.43
1:A:85:LEU:HA	1:A:88:ILE:HD12	1.99	0.43
1:A:390:PHE:HA	1:A:393:ARG:HH11	1.84	0.43
1:A:304:ALA:HB2	1:A:362:THR:HG21	2.01	0.43
1:A:596:LYS:HA	1:A:596:LYS:HD3	1.86	0.43
1:A:144:LEU:HD12	1:A:148:LEU:HD12	2.01	0.42
1:A:465:LYS:HB3	1:A:467:GLU:OE1	2.18	0.42
1:A:264:ALA:HA	1:A:267:LEU:HD13	2.00	0.42
1:A:362:THR:O	1:A:363:LYS:HD2	2.19	0.42
1:A:323:MET:HE3	1:A:323:MET:HB2	1.95	0.42
1:A:225:ASP:OD1	1:A:226:VAL:N	2.53	0.42
1:A:320:LEU:HD13	1:A:380:GLN:HG2	2.01	0.42
1:A:482:ARG:NH1	1:A:608:THR:HA	2.30	0.42
1:A:524:GLN:HE21	1:A:574:VAL:HG11	1.84	0.42
1:A:307:ILE:O	1:A:310:GLU:HG3	2.19	0.42
1:A:335:ASP:N	1:A:335:ASP:OD1	2.53	0.42
2:C:350:VAL:HG23	2:C:400:PHE:CD2	2.55	0.42
2:C:355:ARG:HH21	2:C:397:ALA:C	2.22	0.42

Continued on next page...

Continued from previous page...

Atom-1	Atom-2	Interatomic distance (Å)	Clash overlap (Å)
1:A:161:ARG:HH21	1:A:268:GLY:H	1.67	0.41
1:A:239:HIS:HE1	1:A:596:LYS:HA	1.84	0.41
1:A:265:HIS:HD2	1:A:490:PRO:HG3	1.85	0.41
1:A:209:VAL:HG21	1:A:565:PRO:HB3	2.01	0.41
1:A:23:GLU:O	1:A:27:THR:HG22	2.21	0.41
1:A:204:ARG:HH22	1:A:465:LYS:HZ1	1.69	0.41
1:A:408:MET:SD	1:A:408:MET:N	2.93	0.41
1:A:220:GLY:O	1:A:223:ILE:HG12	2.21	0.41
2:C:331:ASN:H	2:C:332:ILE:HG22	1.85	0.41
1:A:204:ARG:NH2	1:A:465:LYS:HZ1	2.19	0.40
1:A:148:LEU:HD23	1:A:151:ILE:HD11	2.03	0.40
2:C:390:LEU:H	2:C:390:LEU:HD23	1.85	0.40

There are no symmetry-related clashes.

5.3 Torsion angles [i](#)

5.3.1 Protein backbone [i](#)

In the following table, the Percentiles column shows the percent Ramachandran outliers of the chain as a percentile score with respect to all PDB entries followed by that with respect to all EM entries.

The Analysed column shows the number of residues for which the backbone conformation was analysed, and the total number of residues.

Mol	Chain	Analysed	Favoured	Allowed	Outliers	Percentiles	
1	A	592/594 (100%)	583 (98%)	9 (2%)	0	100	100
2	C	199/1270 (16%)	178 (89%)	21 (11%)	0	100	100
All	All	791/1864 (42%)	761 (96%)	30 (4%)	0	100	100

There are no Ramachandran outliers to report.

5.3.2 Protein sidechains [i](#)

In the following table, the Percentiles column shows the percent sidechain outliers of the chain as a percentile score with respect to all PDB entries followed by that with respect to all EM entries.

The Analysed column shows the number of residues for which the sidechain conformation was

analysed, and the total number of residues.

Mol	Chain	Analysed	Rotameric	Outliers	Percentiles	
1	A	525/525 (100%)	525 (100%)	0	100	100
2	C	176/1113 (16%)	176 (100%)	0	100	100
All	All	701/1638 (43%)	701 (100%)	0	100	100

There are no protein residues with a non-rotameric sidechain to report.

Sometimes sidechains can be flipped to improve hydrogen bonding and reduce clashes. All (4) such sidechains are listed below:

Mol	Chain	Res	Type
1	A	24	GLN
1	A	101	GLN
1	A	524	GLN
2	C	477	ASN

5.3.3 RNA [i](#)

There are no RNA molecules in this entry.

5.4 Non-standard residues in protein, DNA, RNA chains [i](#)

There are no non-standard protein/DNA/RNA residues in this entry.

5.5 Carbohydrates [i](#)

There are no monosaccharides in this entry.

5.6 Ligand geometry [i](#)

5 ligands are modelled in this entry.

In the following table, the Counts columns list the number of bonds (or angles) for which Mogul statistics could be retrieved, the number of bonds (or angles) that are observed in the model and the number of bonds (or angles) that are defined in the Chemical Component Dictionary. The Link column lists molecule types, if any, to which the group is linked. The Z score for a bond length (or angle) is the number of standard deviations the observed value is removed from the expected value. A bond length (or angle) with $|Z| > 2$ is considered an outlier worth inspection. RMSZ is the root-mean-square of all Z scores of the bond lengths (or angles).

Mol	Type	Chain	Res	Link	Bond lengths			Bond angles		
					Counts	RMSZ	# Z > 2	Counts	RMSZ	# Z > 2
3	NAG	A	701	1	14,14,15	0.22	0	17,19,21	0.47	0
3	NAG	C	1301	2	14,14,15	0.27	0	17,19,21	0.49	0
3	NAG	A	704	1	14,14,15	0.22	0	17,19,21	0.42	0
3	NAG	A	703	1	14,14,15	0.34	0	17,19,21	0.35	0
3	NAG	A	702	1	14,14,15	0.21	0	17,19,21	0.41	0

In the following table, the Chirals column lists the number of chiral outliers, the number of chiral centers analysed, the number of these observed in the model and the number defined in the Chemical Component Dictionary. Similar counts are reported in the Torsion and Rings columns. '-' means no outliers of that kind were identified.

Mol	Type	Chain	Res	Link	Chirals	Torsions	Rings
3	NAG	A	701	1	-	2/6/23/26	0/1/1/1
3	NAG	C	1301	2	-	1/6/23/26	0/1/1/1
3	NAG	A	704	1	-	2/6/23/26	0/1/1/1
3	NAG	A	703	1	-	0/6/23/26	0/1/1/1
3	NAG	A	702	1	-	1/6/23/26	0/1/1/1

There are no bond length outliers.

There are no bond angle outliers.

There are no chirality outliers.

All (6) torsion outliers are listed below:

Mol	Chain	Res	Type	Atoms
3	A	701	NAG	C4-C5-C6-O6
3	A	701	NAG	O5-C5-C6-O6
3	A	702	NAG	O5-C5-C6-O6
3	C	1301	NAG	O5-C5-C6-O6
3	A	704	NAG	C4-C5-C6-O6
3	A	704	NAG	O5-C5-C6-O6

There are no ring outliers.

1 monomer is involved in 1 short contact:

Mol	Chain	Res	Type	Clashes	Symm-Clashes
3	A	703	NAG	1	0

5.7 Other polymers [i](#)

There are no such residues in this entry.

5.8 Polymer linkage issues [i](#)

There are no chain breaks in this entry.

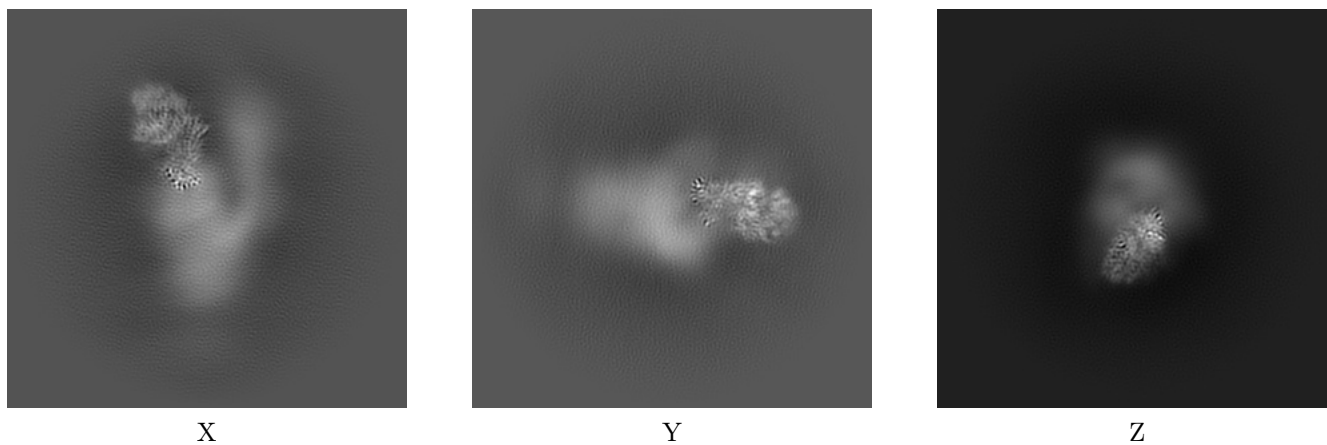
6 Map visualisation [i](#)

This section contains visualisations of the EMDB entry EMD-32483. These allow visual inspection of the internal detail of the map and identification of artifacts.

No raw map or half-maps were deposited for this entry and therefore no images, graphs, etc. pertaining to the raw map can be shown.

6.1 Orthogonal projections [i](#)

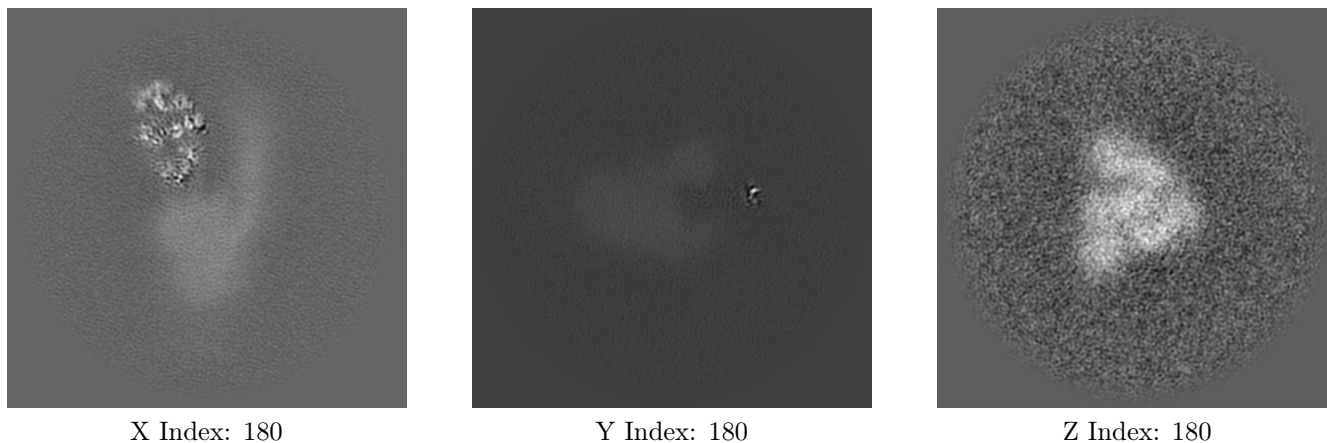
6.1.1 Primary map



The images above show the map projected in three orthogonal directions.

6.2 Central slices [i](#)

6.2.1 Primary map



The images above show central slices of the map in three orthogonal directions.

6.3 Largest variance slices [i](#)

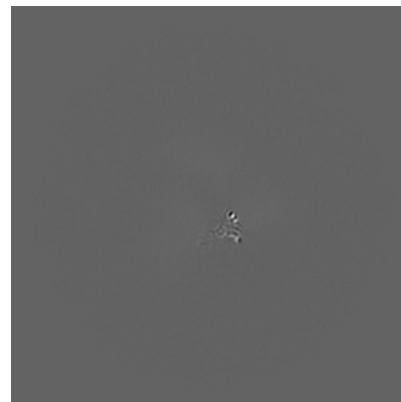
6.3.1 Primary map



X Index: 199



Y Index: 153



Z Index: 203

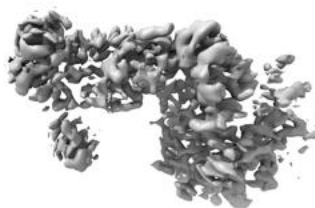
The images above show the largest variance slices of the map in three orthogonal directions.

6.4 Orthogonal surface views [i](#)

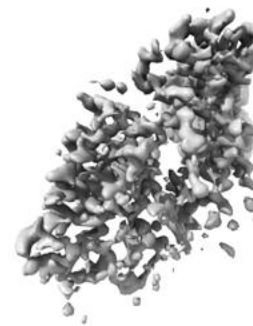
6.4.1 Primary map



X



Y



Z

The images above show the 3D surface view of the map at the recommended contour level 1.04. These images, in conjunction with the slice images, may facilitate assessment of whether an appropriate contour level has been provided.

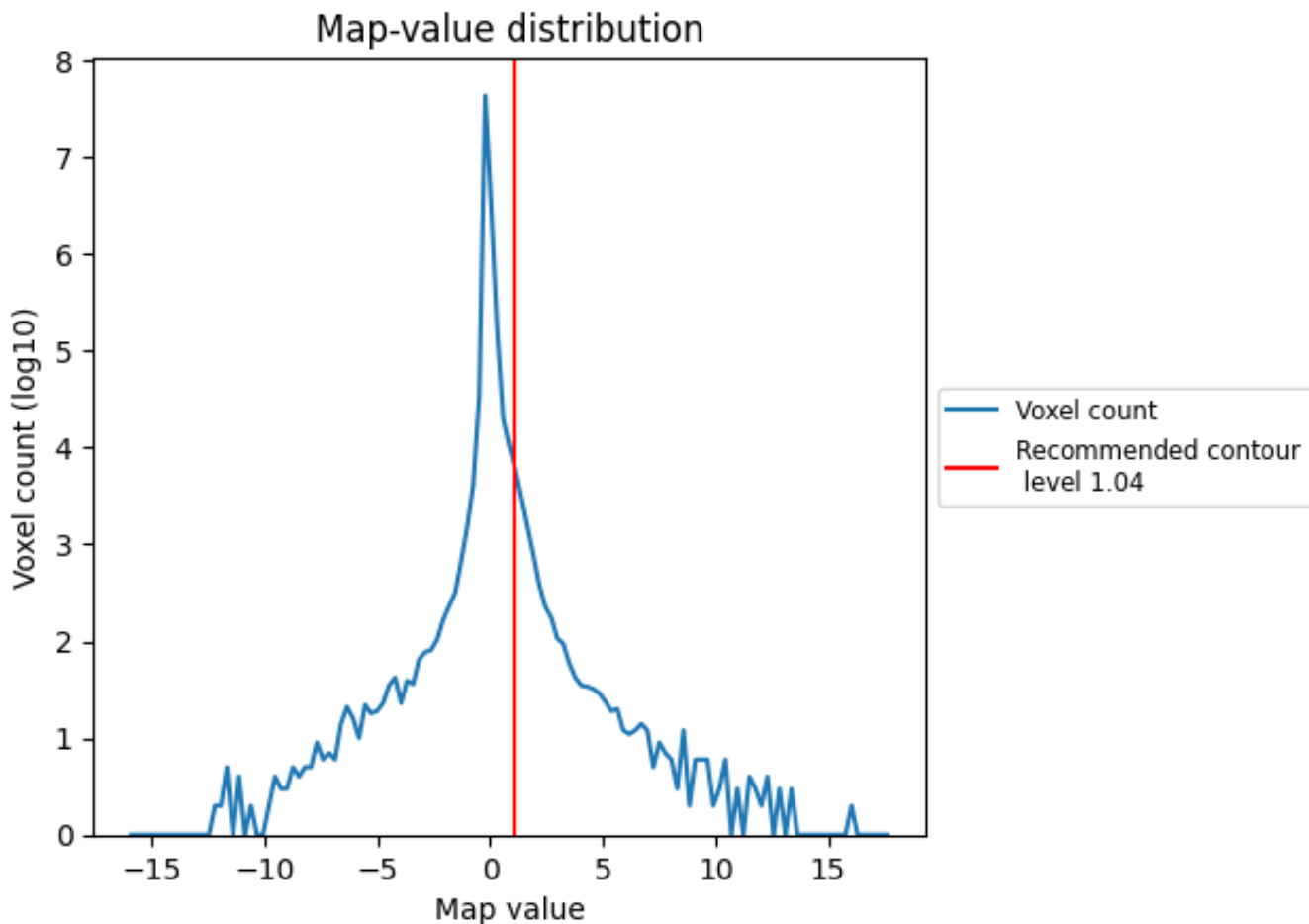
6.5 Mask visualisation

This section was not generated. No masks/segmentation were deposited.

7 Map analysis [i](#)

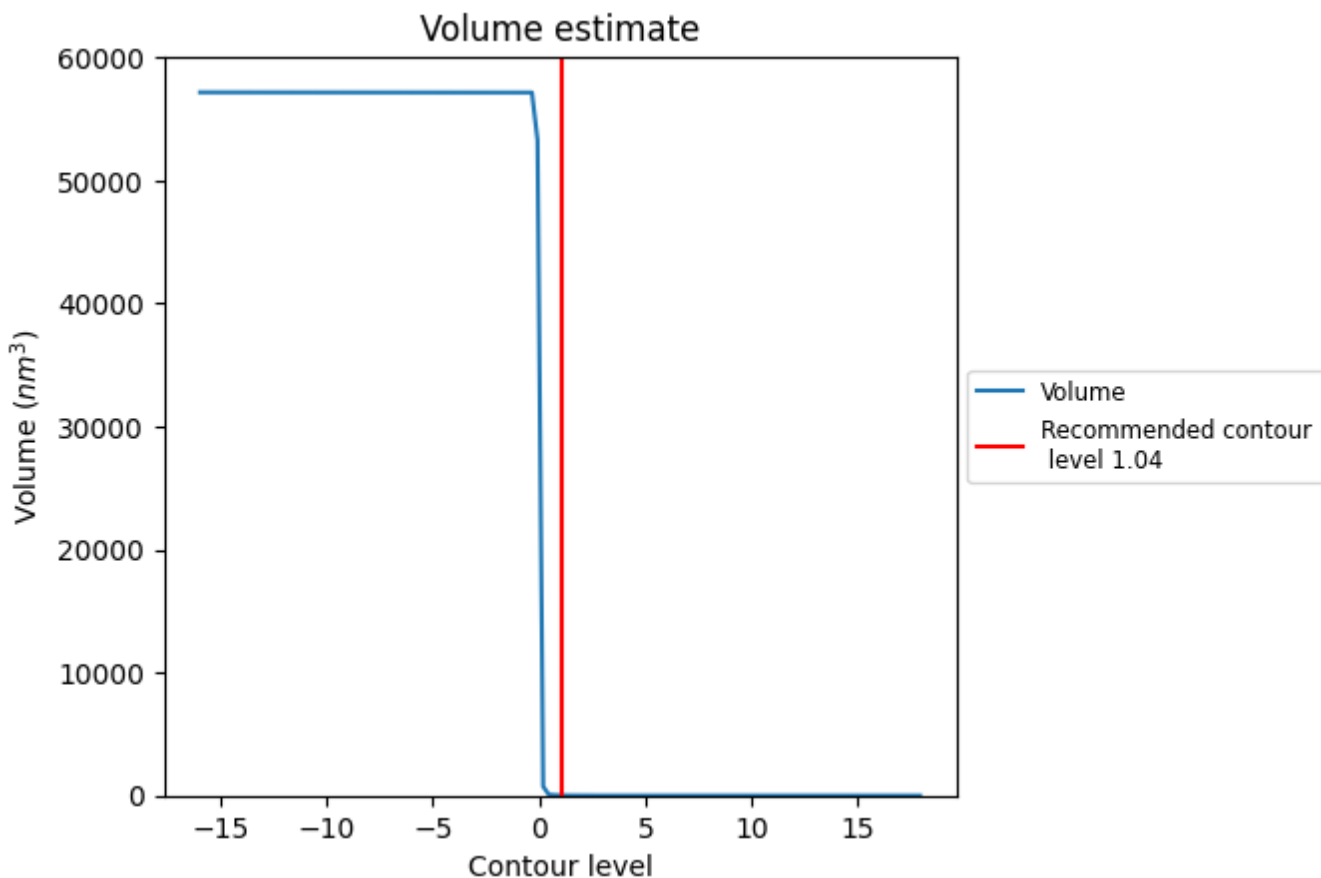
This section contains the results of statistical analysis of the map.

7.1 Map-value distribution [i](#)



The map-value distribution is plotted in 128 intervals along the x-axis. The y-axis is logarithmic. A spike in this graph at zero usually indicates that the volume has been masked.

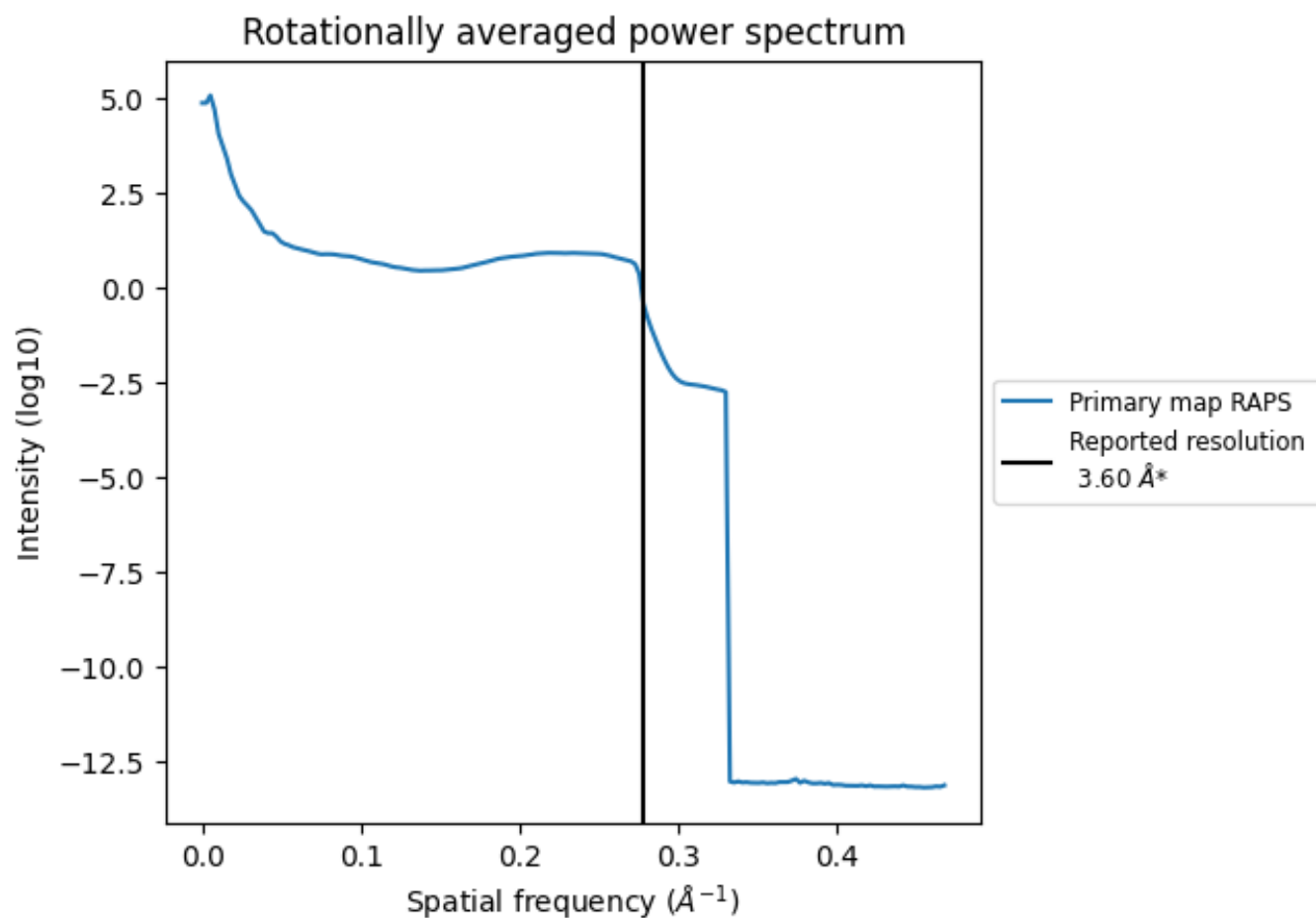
7.2 Volume estimate [i](#)



The volume at the recommended contour level is 19 nm³; this corresponds to an approximate mass of 17 kDa.

The volume estimate graph shows how the enclosed volume varies with the contour level. The recommended contour level is shown as a vertical line and the intersection between the line and the curve gives the volume of the enclosed surface at the given level.

7.3 Rotationally averaged power spectrum [i](#)



*Reported resolution corresponds to spatial frequency of 0.278 Å⁻¹

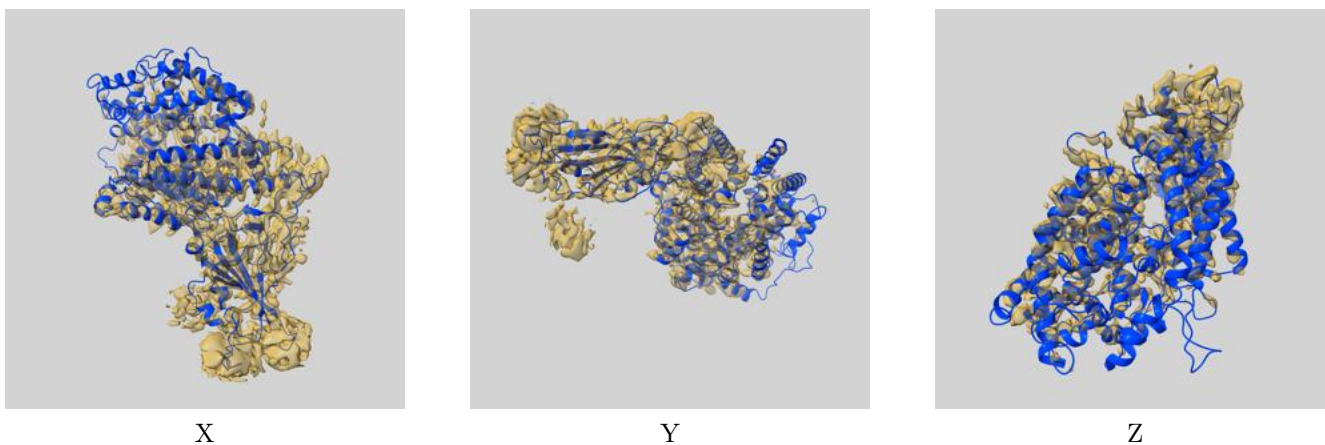
8 Fourier-Shell correlation

This section was not generated. No FSC curve or half-maps provided.

9 Map-model fit [i](#)

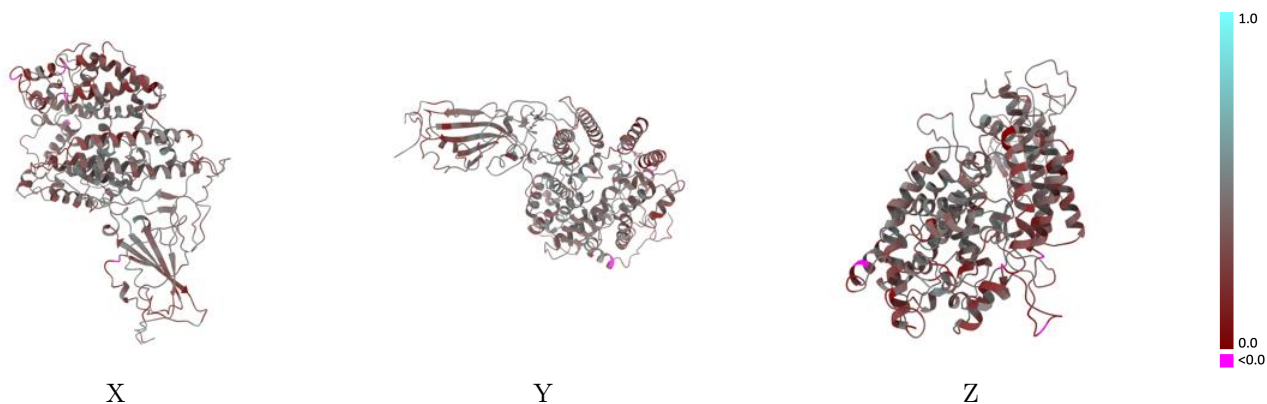
This section contains information regarding the fit between EMDB map EMD-32483 and PDB model 7WGC. Per-residue inclusion information can be found in section 3 on page 6.

9.1 Map-model overlay [i](#)



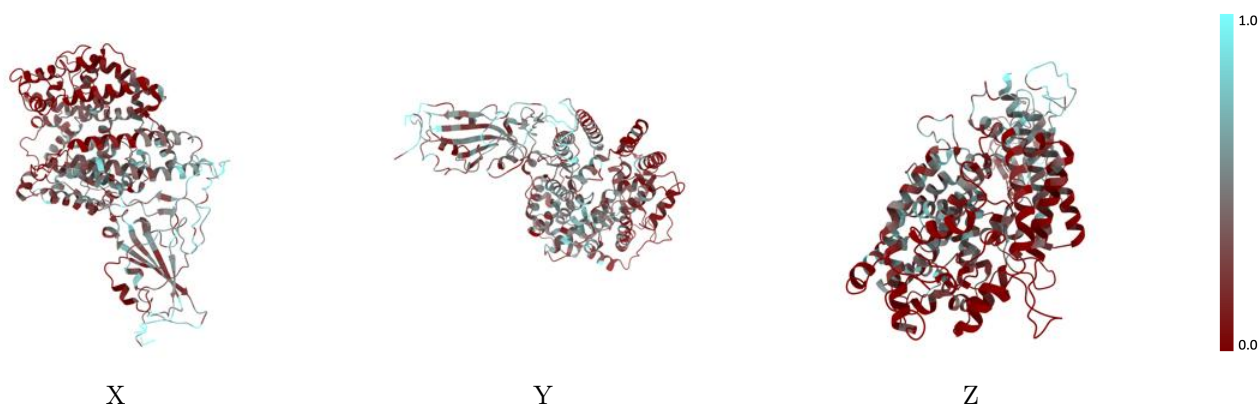
The images above show the 3D surface view of the map at the recommended contour level 1.04 at 50% transparency in yellow overlaid with a ribbon representation of the model coloured in blue. These images allow for the visual assessment of the quality of fit between the atomic model and the map.

9.2 Q-score mapped to coordinate model [i](#)



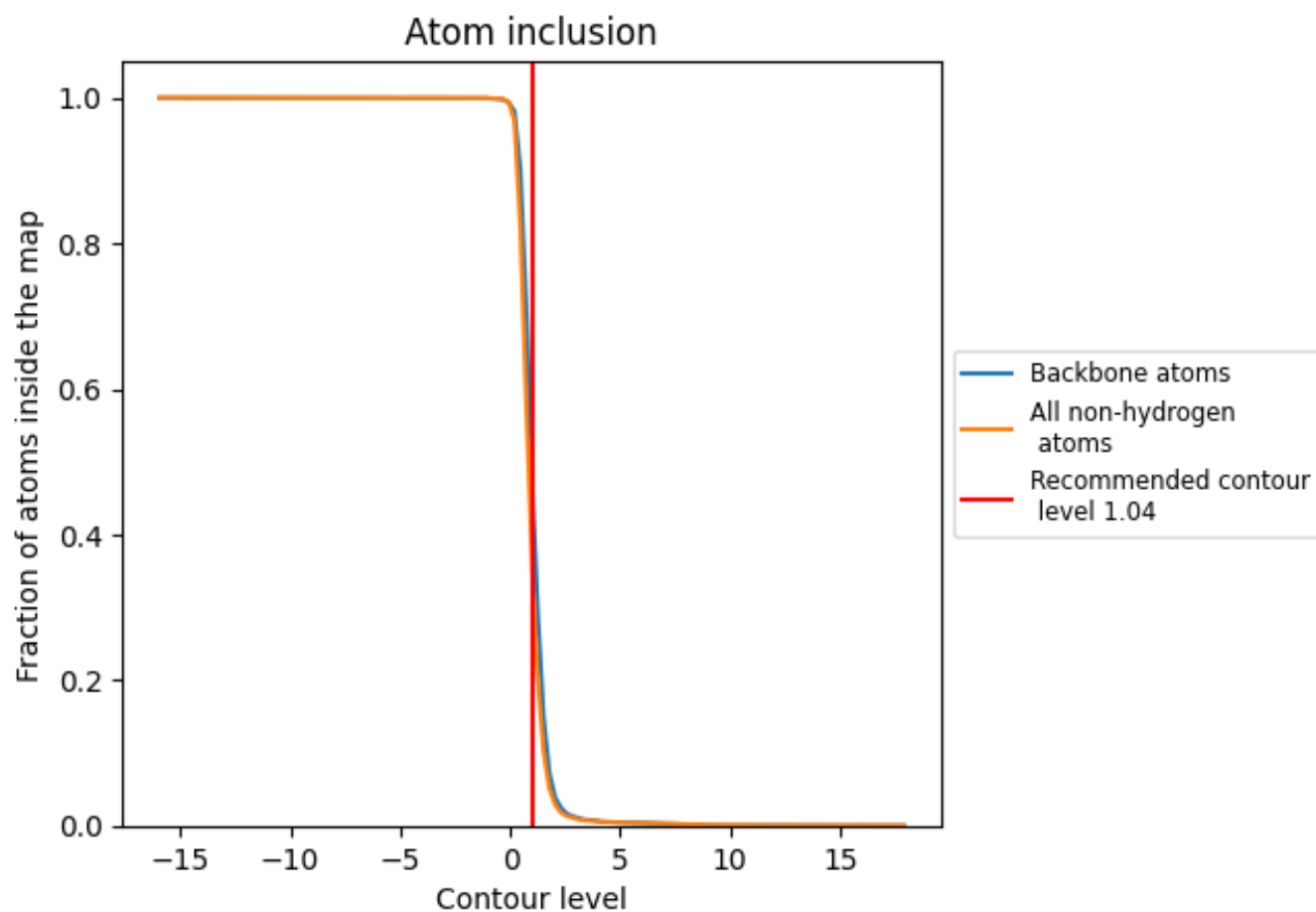
The images above show the model with each residue coloured according its Q-score. This shows their resolvability in the map with higher Q-score values reflecting better resolvability. Please note: Q-score is calculating the resolvability of atoms, and thus high values are only expected at resolutions at which atoms can be resolved. Low Q-score values may therefore be expected for many entries.

9.3 Atom inclusion mapped to coordinate model [i](#)



The images above show the model with each residue coloured according to its atom inclusion. This shows to what extent they are inside the map at the recommended contour level (1.04).







9.4 Atom inclusion [i](#)



At the recommended contour level, 44% of all backbone atoms, 32% of all non-hydrogen atoms, are inside the map.

9.5 Map-model fit summary [i](#)

The table lists the average atom inclusion at the recommended contour level (1.04) and Q-score for the entire model and for each chain.

Chain	Atom inclusion	Q-score
All	 0.3241	 0.3730
A	 0.2715	 0.3660
C	 0.4839	 0.3940

