



# Full wwPDB X-ray Structure Validation Report ⓘ

Jul 4, 2022 – 04:41 pm BST

PDB ID : 7OHD  
Title : CRYSTAL STRUCTURE OF FERRIC MURINE NEUROGLOBIN CDLESS MUTANT  
Authors : Exertier, C.; Freda, I.; Montemiglio, L.C.; Savino, C.; Cerutti, G.; Gugole, E.; Vallone, B.  
Deposited on : 2021-05-10  
Resolution : 1.80 Å(reported)

This is a Full wwPDB X-ray Structure Validation Report for a publicly released PDB entry.

We welcome your comments at [validation@mail.wwpdb.org](mailto:validation@mail.wwpdb.org)

A user guide is available at

<https://www.wwpdb.org/validation/2017/XrayValidationReportHelp>

with specific help available everywhere you see the ⓘ symbol.

The types of validation reports are described at <http://www.wwpdb.org/validation/2017/FAQs#types>.

---

The following versions of software and data (see [references ⓘ](#)) were used in the production of this report:

MolProbity : 4.02b-467  
Mogul : 1.8.4, CSD as541be (2020)  
Xtriage (Phenix) : 1.13  
EDS : 2.29  
buster-report : 1.1.7 (2018)  
Percentile statistics : 20191225.v01 (using entries in the PDB archive December 25th 2019)  
Refmac : 5.8.0267  
CCP4 : 7.1.010 (Gargrove)  
Ideal geometry (proteins) : Engh & Huber (2001)  
Ideal geometry (DNA, RNA) : Parkinson et al. (1996)  
Validation Pipeline (wwPDB-VP) : 2.29

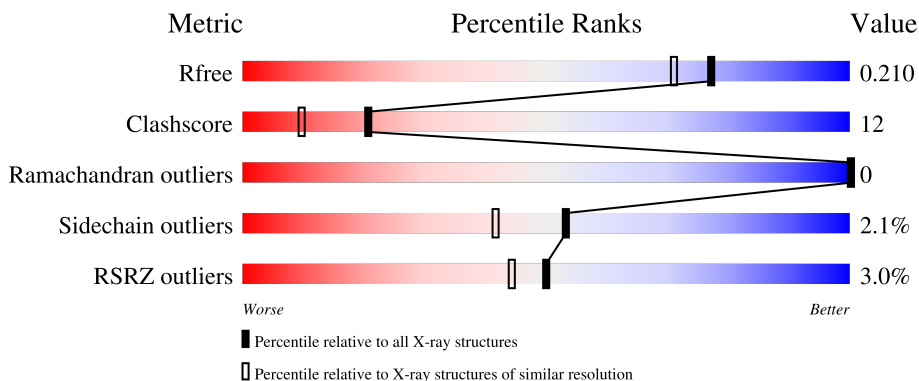
# 1 Overall quality at a glance

The following experimental techniques were used to determine the structure:

*X-RAY DIFFRACTION*


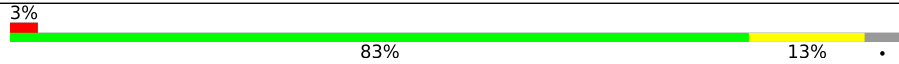
The reported resolution of this entry is 1.80 Å.

Percentile scores (ranging between 0-100) for global validation metrics of the entry are shown in the following graphic. The table shows the number of entries on which the scores are based.



Metric	Whole archive (#Entries)	Similar resolution (#Entries, resolution range(Å))
$R_{free}$	130704	5950 (1.80-1.80)
Clashscore	141614	6793 (1.80-1.80)
Ramachandran outliers	138981	6697 (1.80-1.80)
Sidechain outliers	138945	6696 (1.80-1.80)
RSRZ outliers	127900	5850 (1.80-1.80)

The table below summarises the geometric issues observed across the polymeric chains and their fit to the electron density. The red, orange, yellow and green segments of the lower bar indicate the fraction of residues that contain outliers for  $\geq 3$ , 2, 1 and 0 types of geometric quality criteria respectively. A grey segment represents the fraction of residues that are not modelled. The numeric value for each fraction is indicated below the corresponding segment, with a dot representing fractions  $\leq 5\%$ . The upper red bar (where present) indicates the fraction of residues that have poor fit to the electron density. The numeric value is given above the bar.

Mol	Chain	Length	Quality of chain
1	A	139	 3% 82% 14% •
1	B	139	 3% 83% 13% •

The following table lists non-polymeric compounds, carbohydrate monomers and non-standard residues in protein, DNA, RNA chains that are outliers for geometric or electron-density-fit criteria:

Mol	Type	Chain	Res	Chirality	Geometry	Clashes	Electron density
4	GOL	A	203	-	-	X	-
4	GOL	B	204	-	-	X	-
6	BTB	A	207	-	-	X	-

## 2 Entry composition [i](#)

There are 7 unique types of molecules in this entry. The entry contains 2584 atoms, of which 0 are hydrogens and 0 are deuteriums.

In the tables below, the ZeroOcc column contains the number of atoms modelled with zero occupancy, the AltConf column contains the number of residues with at least one atom in alternate conformation and the Trace column contains the number of residues modelled with at most 2 atoms.

- Molecule 1 is a protein called Neuroglobin.

Mol	Chain	Residues	Atoms					ZeroOcc	AltConf	Trace
			Total	C	N	O	S			
1	A	133	1107	711	189	204	3	0	11	0
1	B	134	1157	749	197	207	4	0	17	0

There are 34 discrepancies between the modelled and reference sequences:

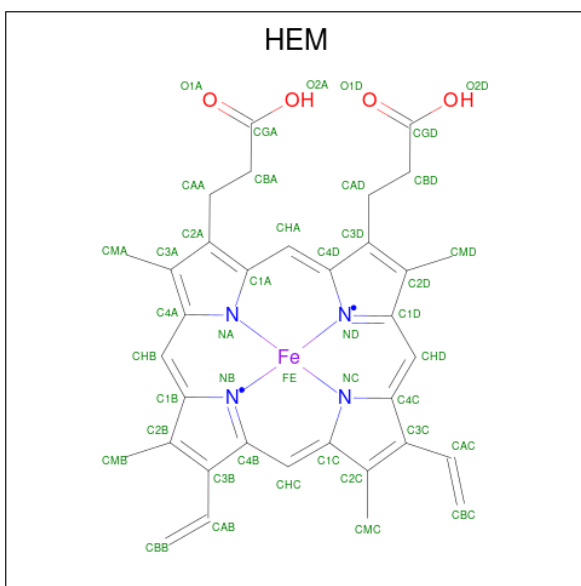
Chain	Residue	Modelled	Actual	Comment	Reference
A	0	HIS	-	expression tag	UNP Q9ER97
A	?	-	GLN	deletion	UNP Q9ER97
A	?	-	TYR	deletion	UNP Q9ER97
A	?	-	ASN	deletion	UNP Q9ER97
A	?	-	GLY	deletion	UNP Q9ER97
A	?	-	ARG	deletion	UNP Q9ER97
A	?	-	GLN	deletion	UNP Q9ER97
A	?	-	PHE	deletion	UNP Q9ER97
A	?	-	SER	deletion	UNP Q9ER97
A	?	-	SER	deletion	UNP Q9ER97
A	?	-	PRO	deletion	UNP Q9ER97
A	?	-	GLU	deletion	UNP Q9ER97
A	?	-	ASP	deletion	UNP Q9ER97
A	?	-	CYS	deletion	UNP Q9ER97
A	?	-	LEU	deletion	UNP Q9ER97
A	43	GLY	-	linker	UNP Q9ER97
A	107	SER	CYS	engineered mutation	UNP Q9ER97
B	0	HIS	-	expression tag	UNP Q9ER97
B	?	-	GLN	deletion	UNP Q9ER97
B	?	-	TYR	deletion	UNP Q9ER97
B	?	-	ASN	deletion	UNP Q9ER97
B	?	-	GLY	deletion	UNP Q9ER97
B	?	-	ARG	deletion	UNP Q9ER97
B	?	-	GLN	deletion	UNP Q9ER97
B	?	-	PHE	deletion	UNP Q9ER97

*Continued on next page...*

Continued from previous page...

Chain	Residue	Modelled	Actual	Comment	Reference
B	?	-	SER	deletion	UNP Q9ER97
B	?	-	SER	deletion	UNP Q9ER97
B	?	-	PRO	deletion	UNP Q9ER97
B	?	-	GLU	deletion	UNP Q9ER97
B	?	-	ASP	deletion	UNP Q9ER97
B	?	-	CYS	deletion	UNP Q9ER97
B	?	-	LEU	deletion	UNP Q9ER97
B	43	GLY	-	linker	UNP Q9ER97
B	107	SER	CYS	engineered mutation	UNP Q9ER97

- Molecule 2 is PROTOPORPHYRIN IX CONTAINING FE (three-letter code: HEM) (formula:  $C_{34}H_{32}FeN_4O_4$ ).



Mol	Chain	Residues	Atoms				ZeroOcc	AltConf	
2	A	1	Total	C	Fe	N	O	0	1
			86	68	2	8	8		
2	B	1	Total	C	Fe	N	O	0	1
			86	68	2	8	8		

- Molecule 3 is SULFATE ION (three-letter code: SO4) (formula:  $O_4S$ ).



Mol	Chain	Residues	Atoms			ZeroOcc	AltConf
3	A	1	Total	O	S	0	0
			5	4	1		
3	A	1	Total	O	S	0	0
			5	4	1		

- Molecule 4 is GLYCEROL (three-letter code: GOL) (formula:  $C_3H_8O_3$ ).



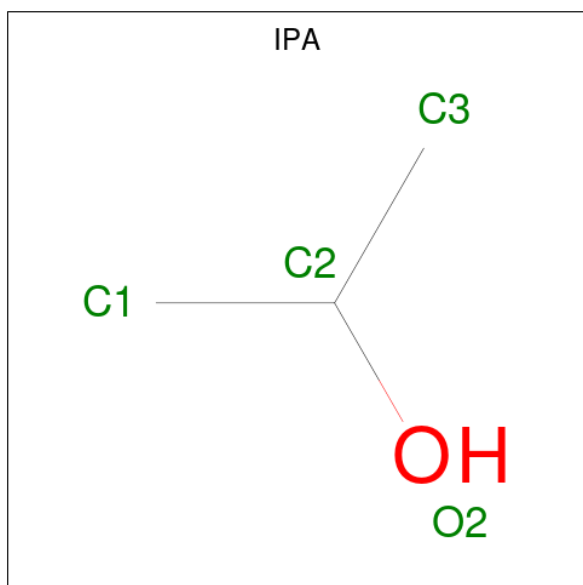
Mol	Chain	Residues	Atoms			ZeroOcc	AltConf
4	A	1	Total	C	O	0	0
			5	3	2		
4	A	1	Total	C	O	0	0
			6	3	3		

*Continued on next page...*

Continued from previous page...

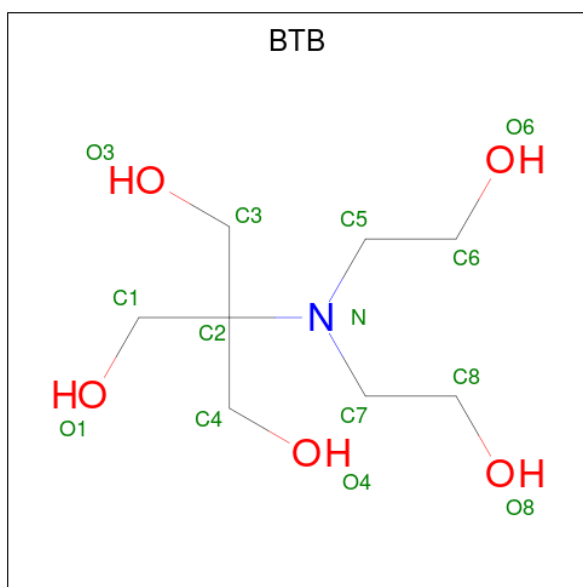
Mol	Chain	Residues	Atoms			ZeroOcc	AltConf
4	B	1	Total	C	O	0	1
			10	6	4		
4	B	1	Total	C	O	0	0
			6	3	3		

- Molecule 5 is ISOPROPYL ALCOHOL (three-letter code: IPA) (formula: C<sub>3</sub>H<sub>8</sub>O).



Mol	Chain	Residues	Atoms			ZeroOcc	AltConf
5	A	1	Total	C	O	0	0
			4	3	1		
5	B	1	Total	C	O	0	0
			4	3	1		

- Molecule 6 is 2-[BIS-(2-HYDROXY-ETHYL)-AMINO]-2-HYDROXYMETHYL-PROPAN E-1,3-DIOL (three-letter code: BTB) (formula: C<sub>8</sub>H<sub>19</sub>NO<sub>5</sub>).



Mol	Chain	Residues	Atoms				ZeroOcc	AltConf
			Total	C	N	O		
6	A	1	14	8	1	5	0	0

- Molecule 7 is water.

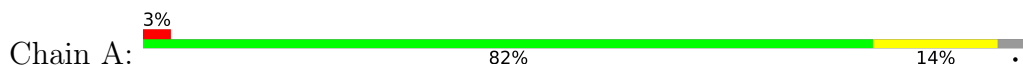
Mol	Chain	Residues	Atoms		ZeroOcc	AltConf
7	A	46	Total	O	0	0
			46	46		
7	B	43	Total	O	0	0
			43	43		



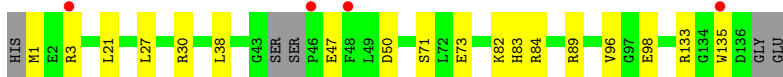
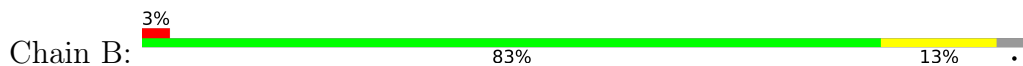
### 3 Residue-property plots [i](#)

These plots are drawn for all protein, RNA, DNA and oligosaccharide chains in the entry. The first graphic for a chain summarises the proportions of the various outlier classes displayed in the second graphic. The second graphic shows the sequence view annotated by issues in geometry and electron density. Residues are color-coded according to the number of geometric quality criteria for which they contain at least one outlier: green = 0, yellow = 1, orange = 2 and red = 3 or more. A red dot above a residue indicates a poor fit to the electron density ( $RSRZ > 2$ ). Stretches of 2 or more consecutive residues without any outlier are shown as a green connector. Residues present in the sample, but not in the model, are shown in grey.

- Molecule 1: Neuroglobin



- Molecule 1: Neuroglobin



## 4 Data and refinement statistics

Property	Value	Source
Space group	P 63	Depositor
Cell constants a, b, c, $\alpha$ , $\beta$ , $\gamma$	95.94Å 95.94Å 58.56Å 90.00° 90.00° 120.00°	Depositor
Resolution (Å)	48.02 – 1.80 47.97 – 1.80	Depositor EDS
% Data completeness (in resolution range)	99.9 (48.02-1.80) 99.9 (47.97-1.80)	Depositor EDS
$R_{merge}$	(Not available)	Depositor
$R_{sym}$	(Not available)	Depositor
$\langle I/\sigma(I) \rangle$ <sup>1</sup>	1.39 (at 1.79Å)	Xtrriage
Refinement program	REFMAC 5.8.0257	Depositor
R, $R_{free}$	0.182 , 0.211 0.193 , 0.210	Depositor DCC
$R_{free}$ test set	1464 reflections (5.11%)	wwPDB-VP
Wilson B-factor (Å <sup>2</sup> )	44.2	Xtrriage
Anisotropy	0.021	Xtrriage
Bulk solvent $k_{sol}$ (e/Å <sup>3</sup> ), $B_{sol}$ (Å <sup>2</sup> )	(Not available) , (Not available)	EDS
L-test for twinning <sup>2</sup>	$\langle  L  \rangle = 0.48$ , $\langle L^2 \rangle = 0.31$	Xtrriage
Estimated twinning fraction	0.076 for h,-h-k,-l	Xtrriage
$F_o, F_c$ correlation	0.97	EDS
Total number of atoms	2584	wwPDB-VP
Average B, all atoms (Å <sup>2</sup> )	48.0	wwPDB-VP

Xtrriage's analysis on translational NCS is as follows: *The largest off-origin peak in the Patterson function is 4.24% of the height of the origin peak. No significant pseudotranslation is detected.*

<sup>1</sup>Intensities estimated from amplitudes.

<sup>2</sup>Theoretical values of  $\langle |L| \rangle$ ,  $\langle L^2 \rangle$  for acentric reflections are 0.5, 0.333 respectively for untwinned datasets, and 0.375, 0.2 for perfectly twinned datasets.

## 5 Model quality [i](#)

### 5.1 Standard geometry [i](#)

Bond lengths and bond angles in the following residue types are not validated in this section: SO4, BTB, IPA, GOL, HEM

The Z score for a bond length (or angle) is the number of standard deviations the observed value is removed from the expected value. A bond length (or angle) with  $|Z| > 5$  is considered an outlier worth inspection. RMSZ is the root-mean-square of all Z scores of the bond lengths (or angles).

Mol	Chain	Bond lengths		Bond angles	
		RMSZ	# Z  >5	RMSZ	# Z  >5
1	A	0.75	0/1166	0.75	0/1580
1	B	0.75	0/1233	0.82	2/1666 (0.1%)
All	All	0.75	0/2399	0.79	2/3246 (0.1%)

There are no bond length outliers.

All (2) bond angle outliers are listed below:

Mol	Chain	Res	Type	Atoms	Z	Observed(°)	Ideal(°)
1	B	83[A]	HIS	CA-C-O	5.80	132.29	120.10
1	B	83[B]	HIS	CA-C-O	5.80	132.29	120.10

There are no chirality outliers.

There are no planarity outliers.

### 5.2 Too-close contacts [i](#)

In the following table, the Non-H and H(model) columns list the number of non-hydrogen atoms and hydrogen atoms in the chain respectively. The H(added) column lists the number of hydrogen atoms added and optimized by MolProbity. The Clashes column lists the number of clashes within the asymmetric unit, whereas Symm-Clashes lists symmetry-related clashes.

Mol	Chain	Non-H	H(model)	H(added)	Clashes	Symm-Clashes
1	A	1107	0	1133	20	0
1	B	1157	0	1216	18	0
2	A	86	0	60	18	0
2	B	86	0	60	12	0
3	A	10	0	0	1	0
4	A	11	0	13	5	0
4	B	16	0	18	6	0

*Continued on next page...*

*Continued from previous page...*

Mol	Chain	Non-H	H(model)	H(added)	Clashes	Symm-Clashes
5	A	4	0	8	0	0
5	B	4	0	8	1	0
6	A	14	0	19	12	0
7	A	46	0	0	2	0
7	B	43	0	0	0	0
All	All	2584	0	2535	62	0

The all-atom clashscore is defined as the number of clashes found per 1000 atoms (including hydrogen atoms). The all-atom clashscore for this structure is 12.

All (62) close contacts within the same asymmetric unit are listed below, sorted by their clash magnitude.

Atom-1	Atom-2	Interatomic distance (Å)	Clash overlap (Å)
2:A:201[B]:HEM:HBB2	2:A:201[B]:HEM:HMB2	1.29	1.09
1:A:117[B]:ARG:NH2	1:B:98[B]:GLU:OE2	1.89	1.05
2:A:201[B]:HEM:HBC2	2:A:201[B]:HEM:HHD	1.38	1.04
1:B:38:LEU:HD22	2:B:201[B]:HEM:HBC1	1.45	0.96
2:A:201[B]:HEM:HBB2	2:A:201[B]:HEM:CMB	1.98	0.89
1:B:38:LEU:HD22	2:B:201[B]:HEM:CBC	2.05	0.85
6:A:207:BTB:H81	6:A:207:BTB:H12	1.64	0.78
2:B:201[B]:HEM:HMB2	2:B:201[B]:HEM:HBB2	1.64	0.78
2:A:201[B]:HEM:HMB2	2:A:201[B]:HEM:CBB	2.12	0.76
2:B:201[A]:HEM:HBC2	2:B:201[A]:HEM:HMC1	1.69	0.74
2:B:201[B]:HEM:HBB2	2:B:201[B]:HEM:CMB	2.21	0.71
1:B:21:LEU:H	4:B:204:GOL:H11	1.58	0.68
2:B:201[B]:HEM:HBC2	2:B:201[B]:HEM:HMC2	1.75	0.67
1:A:20:PRO:HD2	4:A:203:GOL:H2	1.78	0.66
1:B:89[B]:ARG:HB3	4:B:203[B]:GOL:H2	1.79	0.64
1:A:41:LEU:HB2	2:A:201[B]:HEM:HBC1	1.78	0.64
1:A:54:LYS:HG2	6:A:207:BTB:H42	1.79	0.63
2:B:201[B]:HEM:HBC2	2:B:201[B]:HEM:CMC	2.28	0.61
1:A:22[A]:GLU:H	4:A:203:GOL:C3	2.14	0.61
1:A:22[B]:GLU:H	4:A:203:GOL:C3	2.15	0.60
1:A:41:LEU:CB	2:A:201[B]:HEM:HBC1	2.33	0.58
2:A:201[A]:HEM:CMD	6:A:207:BTB:H32	2.34	0.58
1:B:21:LEU:HB3	4:B:204:GOL:C1	2.34	0.57
2:A:201[A]:HEM:HMC2	2:A:201[A]:HEM:HBC2	1.87	0.56
2:A:201[A]:HEM:HBB2	2:A:201[A]:HEM:HMB2	1.88	0.56
1:B:73[B]:GLU:HG3	1:B:133:ARG:NH2	2.22	0.54
2:A:201[B]:HEM:HBC2	2:A:201[B]:HEM:CHD	2.14	0.54
1:B:21:LEU:N	4:B:204:GOL:H11	2.22	0.53

*Continued on next page...*

Continued from previous page...

Atom-1	Atom-2	Interatomic distance (Å)	Clash overlap (Å)
1:B:21:LEU:HB3	4:B:204:GOL:H12	1.89	0.53
1:B:84:ARG:CZ	1:B:135:TRP:O	2.57	0.52
2:B:201[A]:HEM:HBC2	2:B:201[A]:HEM:CMC	2.38	0.52
2:B:201[B]:HEM:HMB2	2:B:201[B]:HEM:CBB	2.38	0.52
1:A:117[A]:ARG:NH2	3:A:204:SO4:O4	2.44	0.51
2:A:201[A]:HEM:HAD2	6:A:207:BTB:H41	1.92	0.51
1:A:19[A]:SER:OG	4:A:203:GOL:C3	2.59	0.50
6:A:207:BTB:O3	6:A:207:BTB:O1	2.21	0.50
1:B:73[B]:GLU:OE2	1:B:133:ARG:NH2	2.45	0.49
1:A:54:LYS:CG	6:A:207:BTB:H42	2.43	0.48
2:A:201[A]:HEM:HMD1	6:A:207:BTB:H32	1.95	0.48
1:B:82[B]:LYS:HD3	2:B:201[B]:HEM:HBA2	1.94	0.48
1:A:75:TYR:OH	6:A:207:BTB:H71	2.14	0.47
1:B:96:VAL:HG11	2:B:201[A]:HEM:HMC2	1.96	0.47
1:B:21:LEU:HB3	4:B:204:GOL:H11	1.97	0.47
1:B:47:GLU:HG3	1:B:50:ASP:H	1.79	0.47
1:A:75:TYR:OH	6:A:207:BTB:C7	2.64	0.46
2:A:201[B]:HEM:HHD	2:A:201[B]:HEM:CBC	2.27	0.45
2:A:201[B]:HEM:CMA	6:A:207:BTB:H51	2.45	0.45
1:A:83[B]:HIS:CE1	2:A:201[B]:HEM:NA	2.85	0.45
2:A:201[A]:HEM:HMD1	6:A:207:BTB:C3	2.47	0.45
1:B:84:ARG:NH1	1:B:135:TRP:O	2.50	0.44
2:B:201[A]:HEM:HBB2	2:B:201[A]:HEM:HHC	2.00	0.44
2:A:201[B]:HEM:HMA3	6:A:207:BTB:H51	2.00	0.44
1:A:117[B]:ARG:NH1	7:A:302:HOH:O	2.37	0.43
1:B:30:ARG:HH11	5:B:202:IPA:C3	2.31	0.43
2:A:201[A]:HEM:HBC2	2:A:201[A]:HEM:CMC	2.48	0.42
1:A:32:PHE:HZ	1:A:42:PHE:CE2	2.37	0.42
1:A:21:LEU:HB3	4:A:203:GOL:H12	2.02	0.42
1:A:73[B]:GLU:CG	1:A:133:ARG:HH12	2.33	0.41
1:B:27:LEU:C	1:B:27:LEU:HD23	2.41	0.41
1:A:39:LEU:N	1:A:40:PRO:CD	2.84	0.40
1:A:106:LYS:HD2	7:A:303:HOH:O	2.21	0.40
1:A:27:LEU:HD23	1:A:27:LEU:C	2.42	0.40

There are no symmetry-related clashes.

## 5.3 Torsion angles [i](#)

### 5.3.1 Protein backbone [i](#)

In the following table, the Percentiles column shows the percent Ramachandran outliers of the chain as a percentile score with respect to all X-ray entries followed by that with respect to entries of similar resolution.

The Analysed column shows the number of residues for which the backbone conformation was analysed, and the total number of residues.

Mol	Chain	Analysed	Favoured	Allowed	Outliers	Percentiles	
1	A	142/139 (102%)	140 (99%)	2 (1%)	0	100	100
1	B	147/139 (106%)	145 (99%)	2 (1%)	0	100	100
All	All	289/278 (104%)	285 (99%)	4 (1%)	0	100	100

There are no Ramachandran outliers to report.

### 5.3.2 Protein sidechains [i](#)

In the following table, the Percentiles column shows the percent sidechain outliers of the chain as a percentile score with respect to all X-ray entries followed by that with respect to entries of similar resolution.

The Analysed column shows the number of residues for which the sidechain conformation was analysed, and the total number of residues.

Mol	Chain	Analysed	Rotameric	Outliers	Percentiles	
1	A	127/121 (105%)	125 (98%)	2 (2%)	62	54
1	B	134/121 (111%)	130 (97%)	4 (3%)	41	27
All	All	261/242 (108%)	255 (98%)	6 (2%)	53	37

All (6) residues with a non-rotameric sidechain are listed below:

Mol	Chain	Res	Type
1	A	74	GLU
1	A	105	GLU
1	B	1	MET
1	B	3	ARG
1	B	71[A]	SER
1	B	71[B]	SER

Sometimes sidechains can be flipped to improve hydrogen bonding and reduce clashes. All (3) such

sidechains are listed below:

Mol	Chain	Res	Type
1	A	65	ASN
1	B	23	HIS
1	B	65	ASN

### 5.3.3 RNA [i](#)

There are no RNA molecules in this entry.

### 5.4 Non-standard residues in protein, DNA, RNA chains [i](#)

There are no non-standard protein/DNA/RNA residues in this entry.

### 5.5 Carbohydrates [i](#)

There are no monosaccharides in this entry.

### 5.6 Ligand geometry [i](#)

14 ligands are modelled in this entry.

In the following table, the Counts columns list the number of bonds (or angles) for which Mogul statistics could be retrieved, the number of bonds (or angles) that are observed in the model and the number of bonds (or angles) that are defined in the Chemical Component Dictionary. The Link column lists molecule types, if any, to which the group is linked. The Z score for a bond length (or angle) is the number of standard deviations the observed value is removed from the expected value. A bond length (or angle) with  $|Z| > 2$  is considered an outlier worth inspection. RMSZ is the root-mean-square of all Z scores of the bond lengths (or angles).

Mol	Type	Chain	Res	Link	Bond lengths			Bond angles		
					Counts	RMSZ	# Z  > 2	Counts	RMSZ	# Z  > 2
2	HEM	A	201[A]	1	41,50,50	1.56	8 (19%)	45,82,82	2.02	11 (24%)
2	HEM	B	201[B]	1	41,50,50	1.24	4 (9%)	45,82,82	1.94	12 (26%)
3	SO4	A	202	-	4,4,4	0.52	0	6,6,6	0.25	0
4	GOL	A	203	-	3,4,5	0.20	0	1,4,5	0.27	0
6	BTB	A	207	-	13,13,13	1.41	1 (7%)	7,16,16	1.30	1 (14%)
4	GOL	B	204	-	5,5,5	0.09	0	5,5,5	0.33	0
3	SO4	A	204	-	4,4,4	0.34	0	6,6,6	0.09	0
5	IPA	A	206	-	3,3,3	0.24	0	3,3,3	0.28	0
4	GOL	A	205	-	5,5,5	0.13	0	5,5,5	0.36	0

Mol	Type	Chain	Res	Link	Bond lengths			Bond angles		
					Counts	RMSZ	# Z  > 2	Counts	RMSZ	# Z  > 2
2	HEM	A	201[B]	1	41,50,50	1.37	6 (14%)	45,82,82	2.17	15 (33%)
4	GOL	B	203[A]	-	3,4,5	0.11	0	1,4,5	0.17	0
2	HEM	B	201[A]	1	41,50,50	1.55	8 (19%)	45,82,82	1.83	9 (20%)
5	IPA	B	202	-	3,3,3	0.47	0	3,3,3	0.21	0
4	GOL	B	203[B]	-	3,4,5	0.13	0	1,4,5	0.01	0

In the following table, the Chirals column lists the number of chiral outliers, the number of chiral centers analysed, the number of these observed in the model and the number defined in the Chemical Component Dictionary. Similar counts are reported in the Torsion and Rings columns. '-' means no outliers of that kind were identified.

Mol	Type	Chain	Res	Link	Chirals	Torsions	Rings
2	HEM	A	201[A]	1	-	4/12/54/54	-
4	GOL	A	203	-	-	2/2/2/4	-
2	HEM	B	201[B]	1	-	4/12/54/54	-
6	BTB	A	207	-	-	11/21/21/21	-
4	GOL	B	204	-	-	2/4/4/4	-
4	GOL	A	205	-	-	2/4/4/4	-
2	HEM	A	201[B]	1	-	4/12/54/54	-
4	GOL	B	203[A]	-	-	0/2/2/4	-
2	HEM	B	201[A]	1	-	2/12/54/54	-
4	GOL	B	203[B]	-	-	0/2/2/4	-

All (27) bond length outliers are listed below:

Mol	Chain	Res	Type	Atoms	Z	Observed(Å)	Ideal(Å)
6	A	207	BTB	C2-N	4.63	1.57	1.48
2	B	201[A]	HEM	C3B-C4B	3.64	1.52	1.44
2	A	201[A]	HEM	C4D-ND	-3.63	1.34	1.40
2	B	201[A]	HEM	C1B-NB	-3.52	1.34	1.40
2	A	201[A]	HEM	C1B-NB	-3.50	1.34	1.40
2	A	201[B]	HEM	C1B-NB	-3.40	1.34	1.40
2	B	201[A]	HEM	C4D-ND	-3.17	1.34	1.40
2	A	201[B]	HEM	C4D-ND	-3.14	1.34	1.40
2	B	201[B]	HEM	C4D-ND	-3.11	1.34	1.40
2	A	201[A]	HEM	C1D-C2D	3.02	1.50	1.44
2	B	201[A]	HEM	FE-NB	2.99	2.11	1.96
2	A	201[A]	HEM	C3B-C4B	2.96	1.50	1.44
2	B	201[B]	HEM	C1B-NB	-2.88	1.35	1.40
2	B	201[A]	HEM	C4D-C3D	2.87	1.50	1.45

*Continued on next page...*



*Continued from previous page...*

Mol	Chain	Res	Type	Atoms	Z	Observed(Å)	Ideal(Å)
2	A	201[B]	HEM	FE-NB	2.82	2.10	1.96
2	A	201[A]	HEM	C1D-ND	-2.67	1.33	1.38
2	A	201[A]	HEM	C4D-C3D	2.57	1.49	1.45
2	A	201[A]	HEM	C4B-NB	-2.54	1.33	1.38
2	B	201[A]	HEM	C4B-NB	-2.50	1.33	1.38
2	B	201[A]	HEM	CHB-C1B	2.48	1.41	1.35
2	A	201[B]	HEM	C3C-C2C	-2.44	1.37	1.40
2	B	201[B]	HEM	CHB-C1B	2.38	1.41	1.35
2	B	201[A]	HEM	C1D-ND	-2.36	1.33	1.38
2	B	201[B]	HEM	FE-NB	2.20	2.07	1.96
2	A	201[A]	HEM	CBD-CGD	2.20	1.55	1.50
2	A	201[B]	HEM	C1D-ND	-2.09	1.34	1.38
2	A	201[B]	HEM	FE-ND	-2.04	1.86	1.96

All (48) bond angle outliers are listed below:

Mol	Chain	Res	Type	Atoms	Z	Observed(°)	Ideal(°)
2	A	201[A]	HEM	C1B-NB-C4B	6.44	111.72	105.07
2	B	201[A]	HEM	C1B-NB-C4B	6.31	111.59	105.07
2	A	201[B]	HEM	CHC-C4B-NB	5.98	130.93	124.43
2	B	201[B]	HEM	CHC-C4B-NB	5.76	130.68	124.43
2	A	201[A]	HEM	CHC-C4B-NB	4.58	129.41	124.43
2	A	201[B]	HEM	CBA-CAA-C2A	-4.47	105.00	112.62
2	A	201[A]	HEM	CHA-C4D-ND	4.46	129.89	124.38
2	B	201[B]	HEM	CHA-C4D-ND	4.29	129.68	124.38
2	B	201[B]	HEM	C1B-NB-C4B	4.07	109.28	105.07
2	A	201[B]	HEM	CHA-C4D-ND	3.80	129.08	124.38
2	A	201[A]	HEM	CHD-C1D-ND	3.73	128.48	124.43
2	A	201[A]	HEM	CHA-C4D-C3D	-3.65	118.47	125.33
2	B	201[A]	HEM	CHD-C1D-ND	3.59	128.33	124.43
2	A	201[B]	HEM	C2C-C3C-C4C	3.59	109.40	106.90
2	A	201[B]	HEM	CHD-C1D-ND	3.51	128.24	124.43
2	A	201[A]	HEM	O2D-CGD-CBD	3.46	125.14	114.03
2	B	201[B]	HEM	CHA-C4D-C3D	-3.46	118.84	125.33
2	B	201[A]	HEM	CHB-C1B-NB	3.42	128.60	124.38
6	A	207	BTB	O4-C4-C2	3.34	120.59	111.44
2	A	201[B]	HEM	CMB-C2B-C1B	3.31	130.08	125.04
2	B	201[A]	HEM	CAD-C3D-C4D	3.14	130.15	124.66
2	A	201[B]	HEM	C1B-NB-C4B	3.13	108.31	105.07
2	A	201[B]	HEM	C4D-ND-C1D	3.06	108.24	105.07
2	B	201[A]	HEM	CHC-C4B-NB	2.97	127.66	124.43
2	A	201[A]	HEM	C4B-CHC-C1C	2.92	126.41	122.56

*Continued on next page...*

Continued from previous page...

Mol	Chain	Res	Type	Atoms	Z	Observed(°)	Ideal(°)
2	A	201[B]	HEM	CHB-C1B-NB	2.86	127.91	124.38
2	A	201[A]	HEM	O2D-CGD-O1D	-2.86	116.18	123.30
2	A	201[B]	HEM	O2D-CGD-CBD	2.86	123.21	114.03
2	B	201[A]	HEM	CHD-C1D-C2D	-2.77	120.64	124.98
2	A	201[B]	HEM	CHC-C4B-C3B	-2.77	120.33	124.57
2	B	201[B]	HEM	CHB-C1B-NB	2.70	127.71	124.38
2	B	201[B]	HEM	C2C-C3C-C4C	2.56	108.69	106.90
2	B	201[B]	HEM	C3C-C4C-NC	-2.53	106.16	110.94
2	B	201[A]	HEM	CBD-CAD-C3D	-2.52	105.63	112.63
2	A	201[A]	HEM	CHD-C1D-C2D	-2.45	121.16	124.98
2	A	201[B]	HEM	C3C-C4C-NC	-2.44	106.34	110.94
2	A	201[B]	HEM	CMB-C2B-C3B	-2.42	122.39	128.30
2	B	201[A]	HEM	O2A-CGA-O1A	-2.40	117.31	123.30
2	B	201[B]	HEM	CMC-C2C-C3C	2.36	129.10	124.68
2	B	201[B]	HEM	CHC-C4B-C3B	-2.30	121.05	124.57
2	B	201[B]	HEM	O2A-CGA-CBA	2.25	121.27	114.03
2	B	201[B]	HEM	O2D-CGD-CBD	2.18	121.05	114.03
2	A	201[A]	HEM	O2A-CGA-O1A	-2.15	117.93	123.30
2	B	201[B]	HEM	CHD-C1D-ND	2.12	126.74	124.43
2	B	201[A]	HEM	C4B-CHC-C1C	2.11	125.34	122.56
2	A	201[A]	HEM	CHB-C1B-NB	2.11	126.99	124.38
2	A	201[B]	HEM	O2A-CGA-O1A	-2.07	118.14	123.30
2	A	201[B]	HEM	O2D-CGD-O1D	-2.04	118.22	123.30

There are no chirality outliers.

All (31) torsion outliers are listed below:

Mol	Chain	Res	Type	Atoms
4	A	203	GOL	O1-C1-C2-O2
4	A	203	GOL	O1-C1-C2-C3
4	A	205	GOL	C1-C2-C3-O3
4	A	205	GOL	O2-C2-C3-O3
4	B	204	GOL	O1-C1-C2-C3
6	A	207	BTB	O1-C1-C2-C3
6	A	207	BTB	O1-C1-C2-C4
6	A	207	BTB	O1-C1-C2-N
6	A	207	BTB	C1-C2-C3-O3
6	A	207	BTB	C4-C2-C3-O3
6	A	207	BTB	C1-C2-C4-O4
6	A	207	BTB	C3-C2-C4-O4
6	A	207	BTB	N-C2-C4-O4
6	A	207	BTB	N-C5-C6-O6

Continued on next page...

*Continued from previous page...*

Mol	Chain	Res	Type	Atoms
4	B	204	GOL	O1-C1-C2-O2
6	A	207	BTB	C3-C2-N-C5
2	B	201[B]	HEM	CAD-CBD-CGD-O2D
2	A	201[B]	HEM	CAD-CBD-CGD-O2D
2	B	201[A]	HEM	CAD-CBD-CGD-O1D
2	A	201[B]	HEM	CAD-CBD-CGD-O1D
2	B	201[B]	HEM	CAD-CBD-CGD-O1D
2	B	201[B]	HEM	CAA-CBA-CGA-O1A
2	B	201[B]	HEM	CAA-CBA-CGA-O2A
2	A	201[A]	HEM	CAD-CBD-CGD-O1D
2	A	201[B]	HEM	CAA-CBA-CGA-O1A
2	A	201[A]	HEM	CAA-CBA-CGA-O2A
2	A	201[B]	HEM	CAA-CBA-CGA-O2A
2	A	201[A]	HEM	CAA-CBA-CGA-O1A
2	A	201[A]	HEM	CAD-CBD-CGD-O2D
2	B	201[A]	HEM	CAD-CBD-CGD-O2D
6	A	207	BTB	C8-C7-N-C5

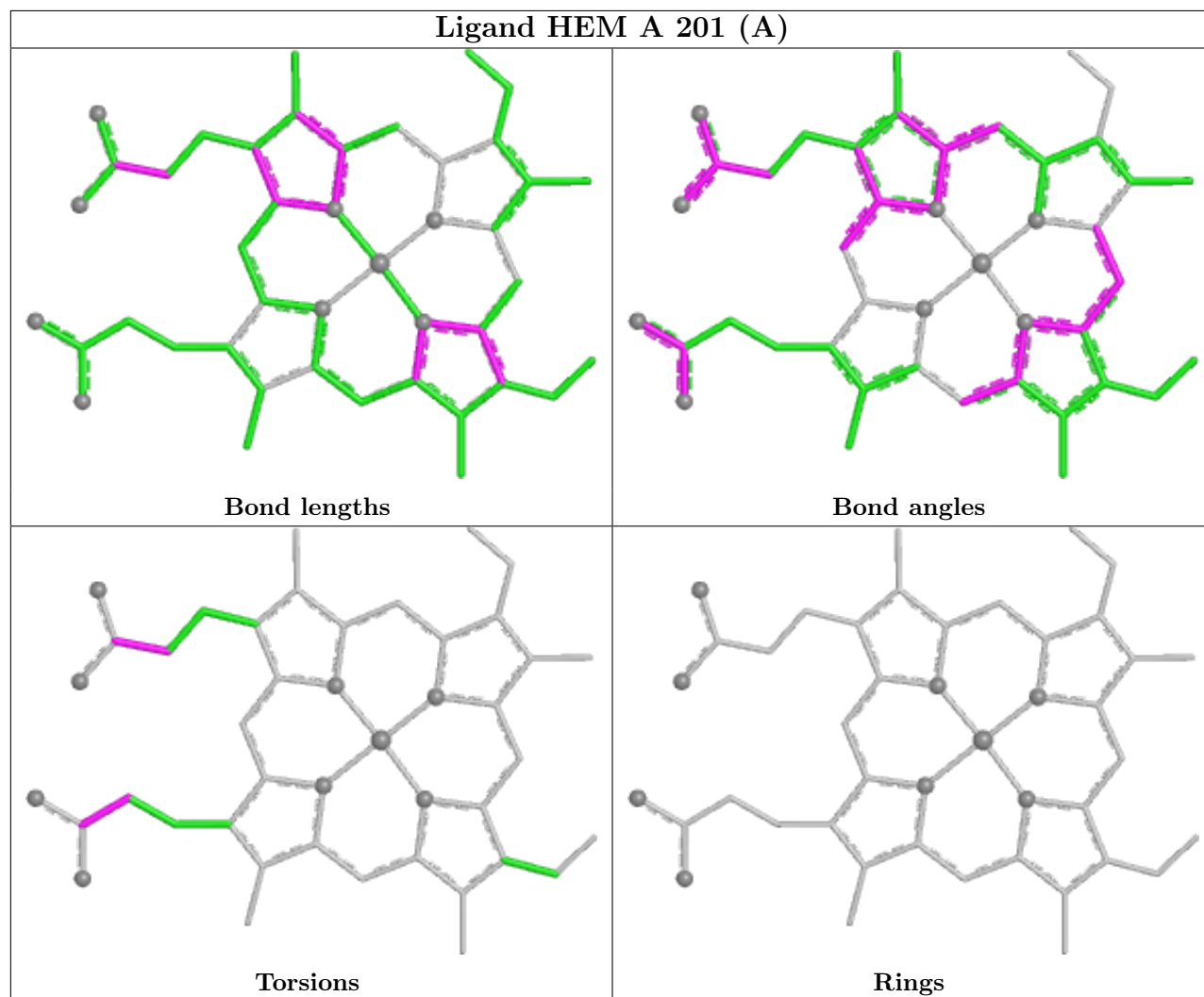
There are no ring outliers.

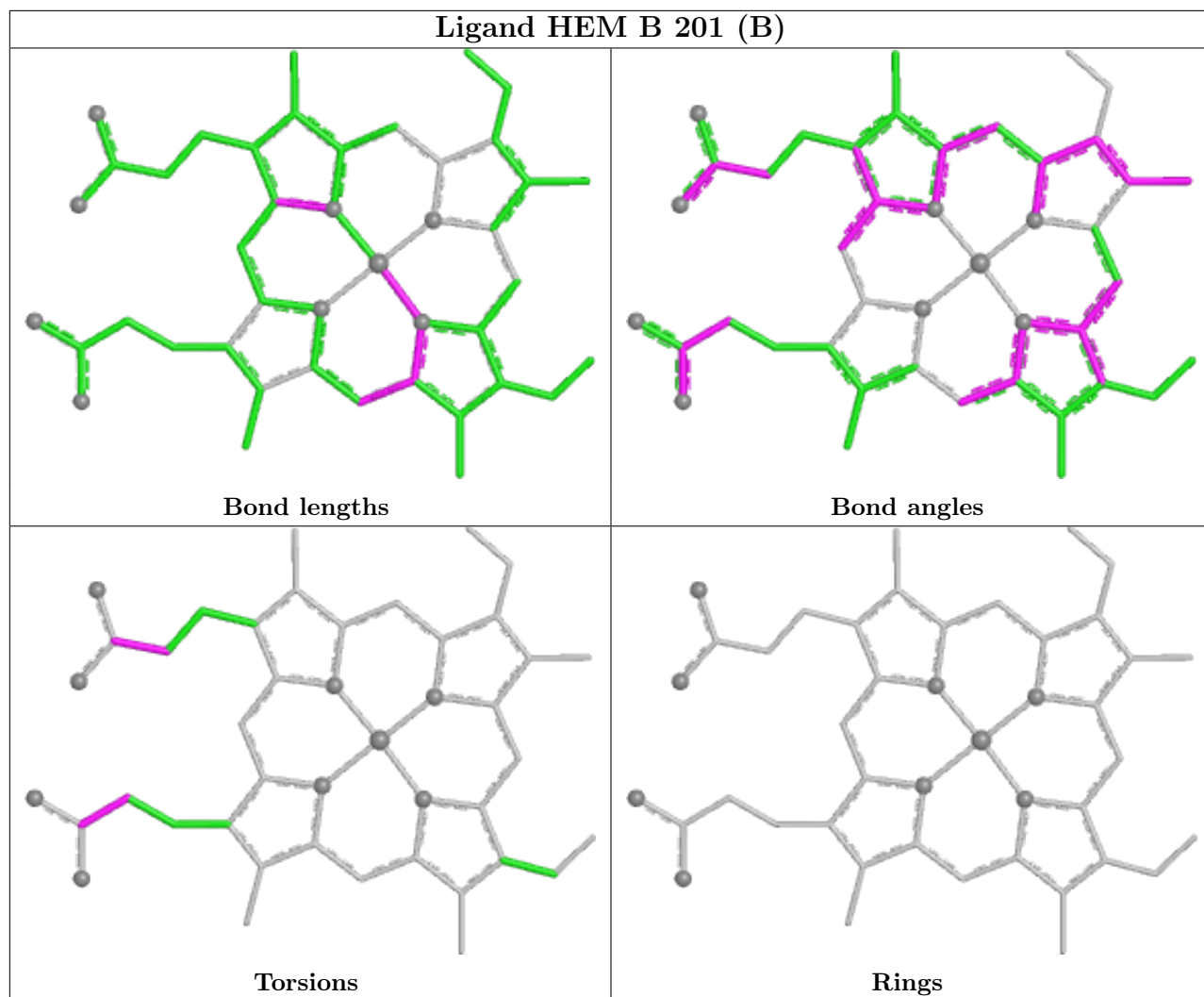
10 monomers are involved in 49 short contacts:

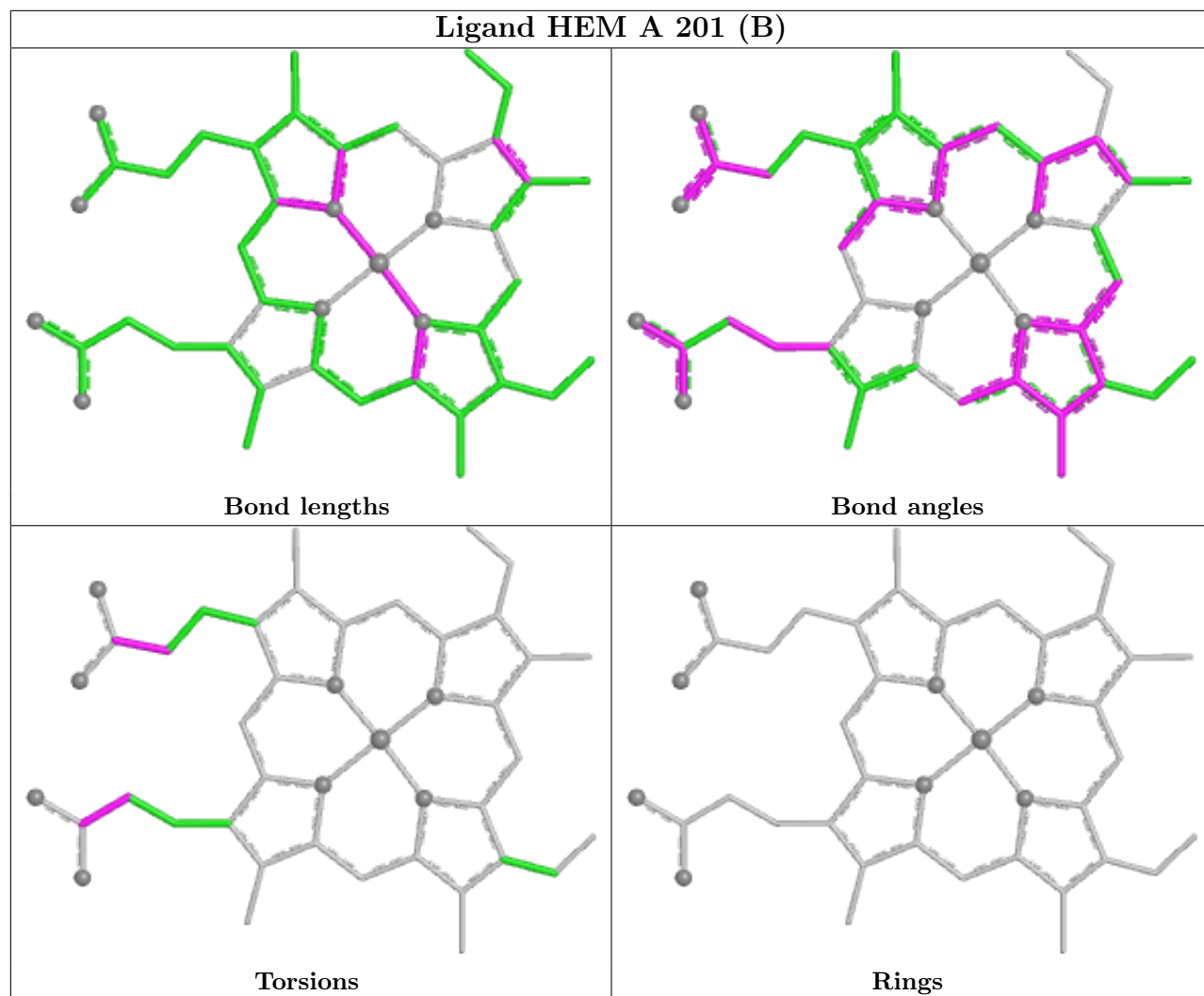
Mol	Chain	Res	Type	Clashes	Symm-Clashes
2	A	201[A]	HEM	7	0
2	B	201[B]	HEM	8	0
4	A	203	GOL	5	0
6	A	207	BTB	12	0
4	B	204	GOL	5	0
3	A	204	SO4	1	0
2	A	201[B]	HEM	11	0
2	B	201[A]	HEM	4	0
5	B	202	IPA	1	0
4	B	203[B]	GOL	1	0

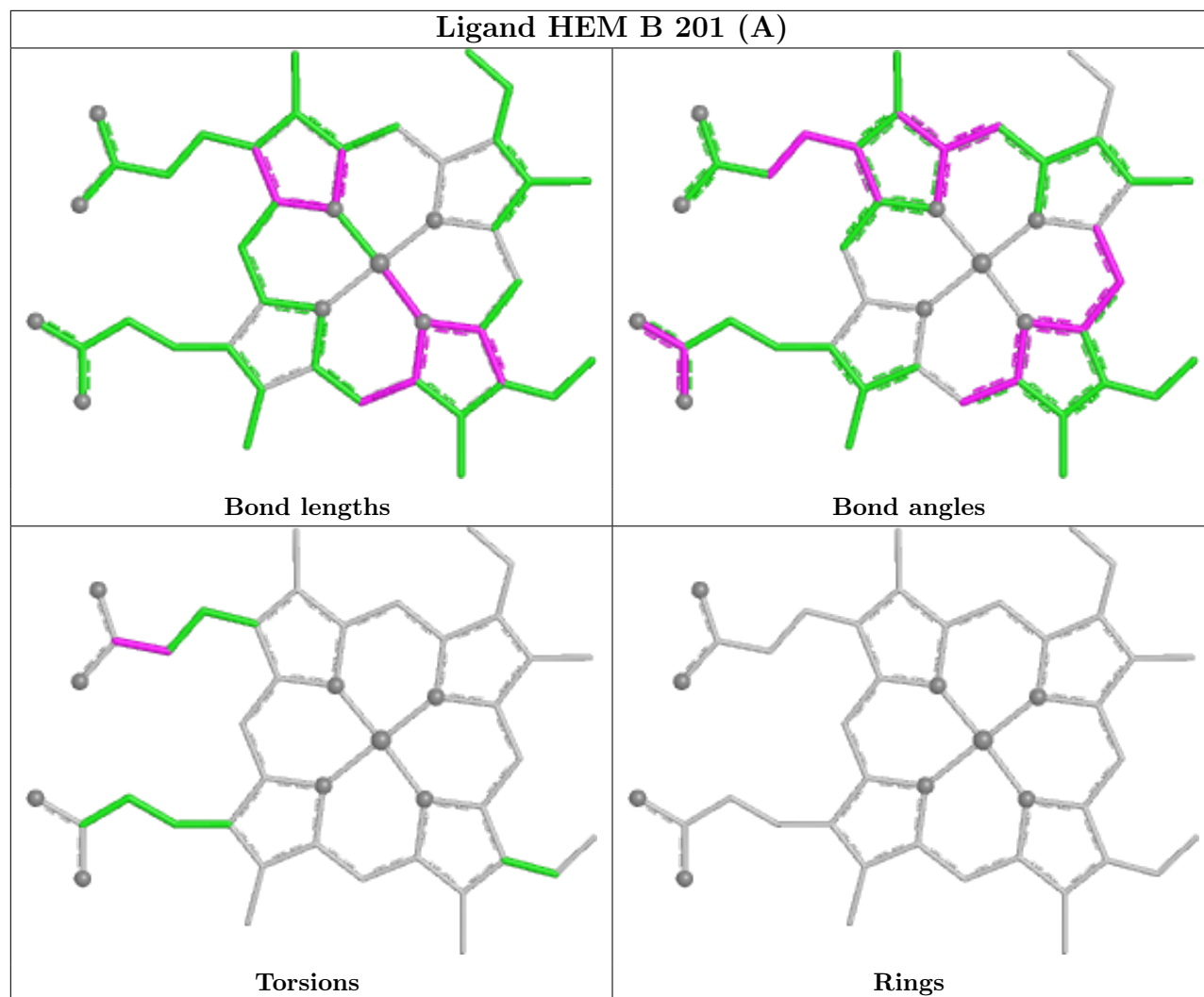
The following is a two-dimensional graphical depiction of Mogul quality analysis of bond lengths, bond angles, torsion angles, and ring geometry for all instances of the Ligand of Interest. In addition, ligands with molecular weight > 250 and outliers as shown on the validation Tables will also be included. For torsion angles, if less than 5% of the Mogul distribution of torsion angles is within 10 degrees of the torsion angle in question, then that torsion angle is considered an outlier. Any bond that is central to one or more torsion angles identified as an outlier by Mogul will be highlighted in the graph. For rings, the root-mean-square deviation (RMSD) between the ring in question and similar rings identified by Mogul is calculated over all ring torsion angles. If the average RMSD is greater than 60 degrees and the minimal RMSD between the ring in question and

any Mogul-identified rings is also greater than 60 degrees, then that ring is considered an outlier. The outliers are highlighted in purple. The color gray indicates Mogul did not find sufficient equivalents in the CSD to analyse the geometry.









## 5.7 Other polymers [i](#)

There are no such residues in this entry.

## 5.8 Polymer linkage issues [i](#)

There are no chain breaks in this entry.

## 6 Fit of model and data [i](#)

### 6.1 Protein, DNA and RNA chains [i](#)

In the following table, the column labelled ‘#RSRZ > 2’ contains the number (and percentage) of RSRZ outliers, followed by percent RSRZ outliers for the chain as percentile scores relative to all X-ray entries and entries of similar resolution. The OWAB column contains the minimum, median, 95<sup>th</sup> percentile and maximum values of the occupancy-weighted average B-factor per residue. The column labelled ‘Q < 0.9’ lists the number of (and percentage) of residues with an average occupancy less than 0.9.

Mol	Chain	Analysed	<RSRZ>	#RSRZ>2	OWAB(Å <sup>2</sup> )	Q<0.9
1	A	133/139 (95%)	-0.22	4 (3%) 50 44	30, 45, 67, 81	0
1	B	134/139 (96%)	-0.19	4 (2%) 50 44	34, 44, 75, 105	1 (0%)
All	All	267/278 (96%)	-0.21	8 (2%) 50 44	30, 45, 70, 105	1 (0%)

All (8) RSRZ outliers are listed below:

Mol	Chain	Res	Type	RSRZ
1	B	46	PRO	4.3
1	A	136	ASP	3.8
1	A	67[A]	GLU	3.3
1	B	48	PHE	2.9
1	A	42	PHE	2.7
1	A	4	PRO	2.6
1	B	135	TRP	2.4
1	B	3	ARG	2.3

### 6.2 Non-standard residues in protein, DNA, RNA chains [i](#)

There are no non-standard protein/DNA/RNA residues in this entry.

### 6.3 Carbohydrates [i](#)

There are no monosaccharides in this entry.

### 6.4 Ligands [i](#)

In the following table, the Atoms column lists the number of modelled atoms in the group and the number defined in the chemical component dictionary. The B-factors column lists the minimum,



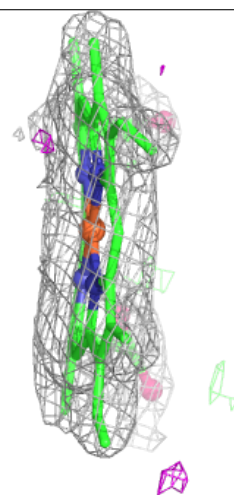
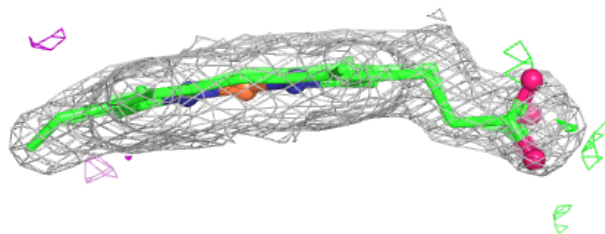
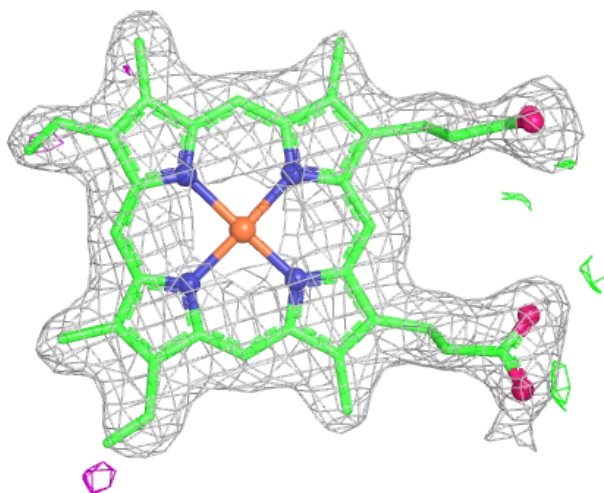
median, 95<sup>th</sup> percentile and maximum values of B factors of atoms in the group. The column labelled 'Q< 0.9' lists the number of atoms with occupancy less than 0.9.

Mol	Type	Chain	Res	Atoms	RSCC	RSR	B-factors(Å <sup>2</sup> )	Q<0.9
4	GOL	A	205	6/6	0.70	0.10	77,83,85,85	0
4	GOL	A	203	5/6	0.84	0.16	45,57,64,66	0
4	GOL	B	204	6/6	0.87	0.16	52,74,83,85	0
6	BTB	A	207	14/14	0.87	0.33	32,50,64,64	14
4	GOL	B	203[B]	5/6	0.92	0.14	42,49,50,55	5
3	SO4	A	204	5/5	0.92	0.20	86,87,99,104	0
5	IPA	B	202	4/4	0.92	0.09	49,51,55,58	0
4	GOL	B	203[A]	5/6	0.92	0.14	39,42,42,43	5
5	IPA	A	206	4/4	0.93	0.13	78,79,84,87	0
3	SO4	A	202	5/5	0.96	0.08	54,58,79,80	0
2	HEM	B	201[A]	43/43	0.97	0.12	38,43,53,61	43
2	HEM	B	201[B]	43/43	0.97	0.12	33,35,41,46	43
2	HEM	A	201[A]	43/43	0.98	0.12	29,35,43,51	43
2	HEM	A	201[B]	43/43	0.98	0.12	27,32,39,41	43

The following is a graphical depiction of the model fit to experimental electron density of all instances of the Ligand of Interest. In addition, ligands with molecular weight > 250 and outliers as shown on the geometry validation Tables will also be included. Each fit is shown from different orientation to approximate a three-dimensional view.

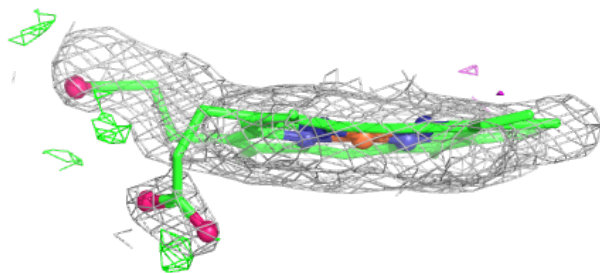
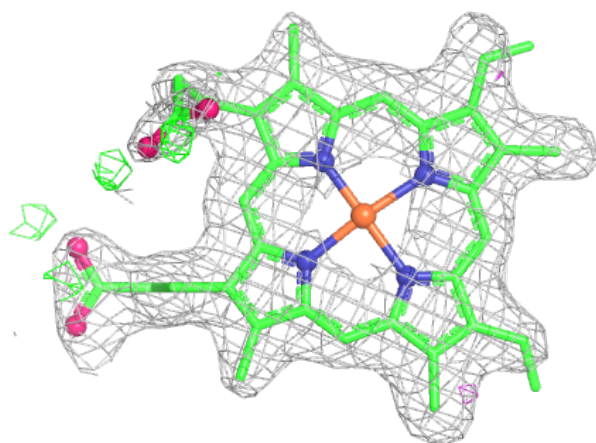
**Electron density around HEM B 201 (A):**

$2mF_o-DF_c$  (at 0.7 rmsd) in gray  
 $mF_o-DF_c$  (at 3 rmsd) in purple (negative)  
and green (positive)



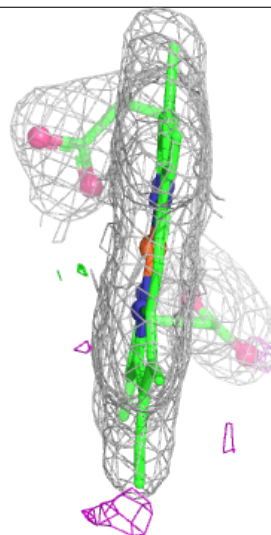
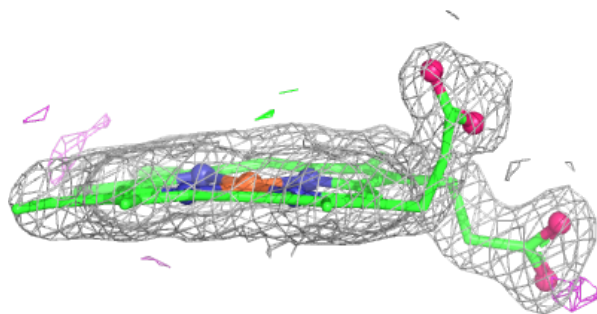
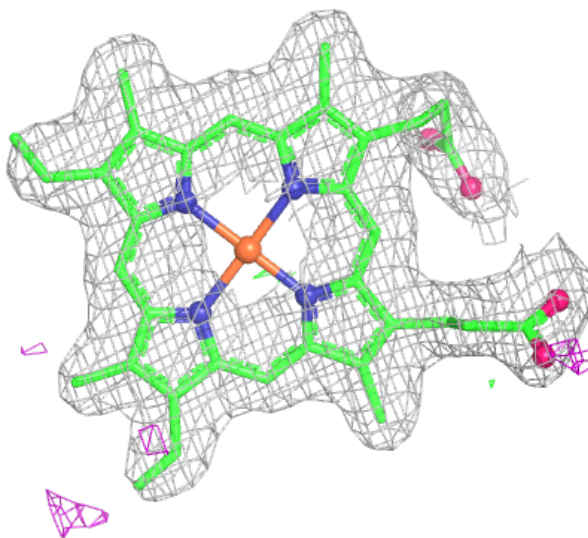
**Electron density around HEM B 201 (B):**

$2mF_o-DF_c$  (at 0.7 rmsd) in gray  
 $mF_o-DF_c$  (at 3 rmsd) in purple (negative)  
and green (positive)



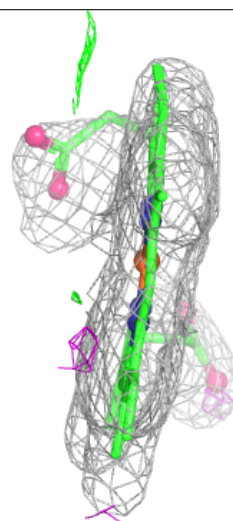
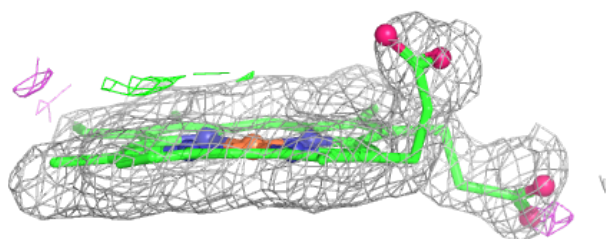
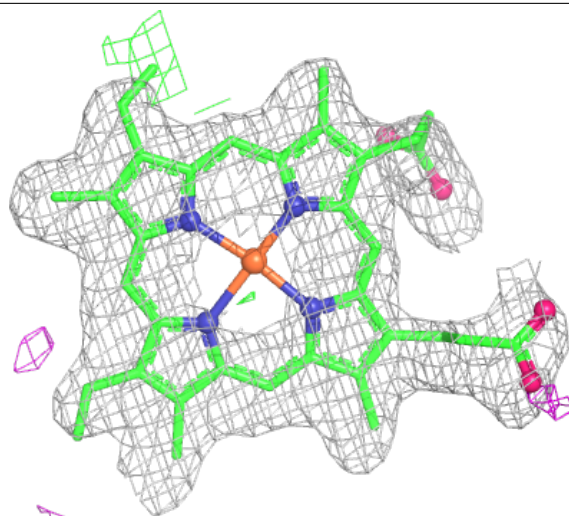
**Electron density around HEM A 201 (A):**

$2mF_o-DF_c$  (at 0.7 rmsd) in gray  
 $mF_o-DF_c$  (at 3 rmsd) in purple (negative)  
and green (positive)



**Electron density around HEM A 201 (B):**

$2mF_o-DF_c$  (at 0.7 rmsd) in gray  
 $mF_o-DF_c$  (at 3 rmsd) in purple (negative)  
and green (positive)



## 6.5 Other polymers [i](#)

There are no such residues in this entry.