



# Full wwPDB X-ray Structure Validation Report ⓘ

Sep 18, 2021 – 11:21 PM BST

PDB ID : 7BMK  
Title : ATP-Competitive Partial Antagonists-'PAIR's-Rheostatically Modulate IRE1alpha's Kinase Helix-alphaC to Segregate its RNase-Mediated Biological Outputs  
Authors : Feldman, H.C.; Ghosh, R.; Auyeung, V.; Mueller, J.L.; Vidadala, V.N.; Olivier, A.; Backes, B.J.; Zikherman, J.; Papa, F.R.; Maly, D.J.  
Deposited on : 2021-01-20  
Resolution : 1.85 Å(reported)

This is a Full wwPDB X-ray Structure Validation Report for a publicly released PDB entry.

We welcome your comments at [validation@mail.wwpdb.org](mailto:validation@mail.wwpdb.org)

A user guide is available at

<https://www.wwpdb.org/validation/2017/XrayValidationReportHelp>

with specific help available everywhere you see the ⓘ symbol.

---

The following versions of software and data (see [references ⓘ](#)) were used in the production of this report:

MolProbity : 4.02b-467  
Mogul : 1.8.5 (274361), CSD as541be (2020)  
Xtriage (Phenix) : 1.13  
EDS : 2.23.1  
buster-report : 1.1.7 (2018)  
Percentile statistics : 20191225.v01 (using entries in the PDB archive December 25th 2019)  
Refmac : 5.8.0158  
CCP4 : 7.0.044 (Gargrove)  
Ideal geometry (proteins) : Engh & Huber (2001)  
Ideal geometry (DNA, RNA) : Parkinson et al. (1996)  
Validation Pipeline (wwPDB-VP) : 2.23.1

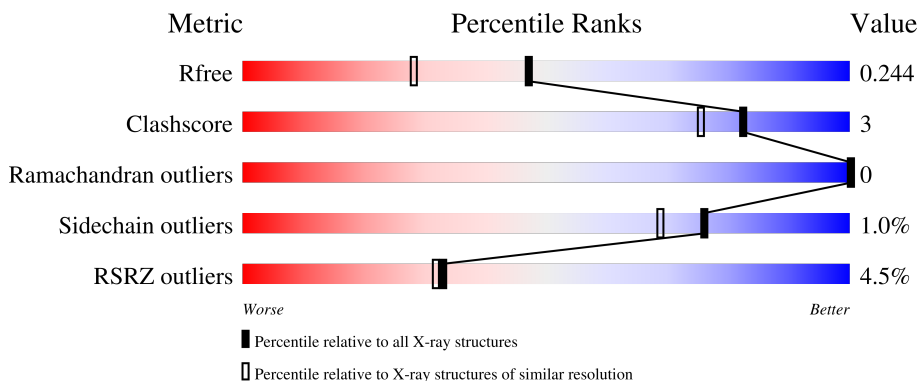
# 1 Overall quality at a glance

The following experimental techniques were used to determine the structure:

*X-RAY DIFFRACTION*

The reported resolution of this entry is 1.85 Å.

Percentile scores (ranging between 0-100) for global validation metrics of the entry are shown in the following graphic. The table shows the number of entries on which the scores are based.



Metric	Whole archive (#Entries)	Similar resolution (#Entries, resolution range(Å))
$R_{free}$	130704	2469 (1.86-1.86)
Clashscore	141614	2625 (1.86-1.86)
Ramachandran outliers	138981	2592 (1.86-1.86)
Sidechain outliers	138945	2592 (1.86-1.86)
RSRZ outliers	127900	2436 (1.86-1.86)

The table below summarises the geometric issues observed across the polymeric chains and their fit to the electron density. The red, orange, yellow and green segments of the lower bar indicate the fraction of residues that contain outliers for  $\geq 3$ , 2, 1 and 0 types of geometric quality criteria respectively. A grey segment represents the fraction of residues that are not modelled. The numeric value for each fraction is indicated below the corresponding segment, with a dot representing fractions  $\leq 5\%$ . The upper red bar (where present) indicates the fraction of residues that have poor fit to the electron density. The numeric value is given above the bar.

Mol	Chain	Length	Quality of chain
1	A	434	 3% 88% 5% 6%
1	B	434	 6% 85% 5% 10%

## 2 Entry composition

There are 7 unique types of molecules in this entry. The entry contains 7573 atoms, of which 0 are hydrogens and 0 are deuteriums.

In the tables below, the ZeroOcc column contains the number of atoms modelled with zero occupancy, the AltConf column contains the number of residues with at least one atom in alternate conformation and the Trace column contains the number of residues modelled with at most 2 atoms.

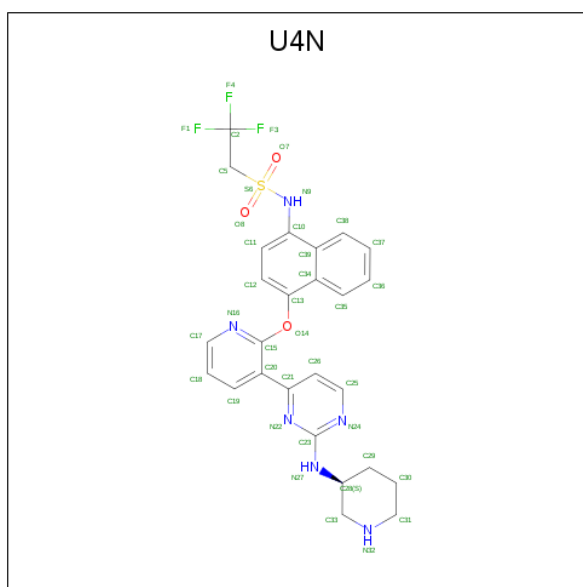
- Molecule 1 is a protein called Serine/threonine-protein kinase/endoribonuclease IRE1.

Mol	Chain	Residues	Atoms					ZeroOcc	AltConf	Trace
			Total	C	N	O	S			
1	A	406	Total	C	N	O	S	72	16	0
			3396	2158	599	616	23			
1	B	392	Total	C	N	O	S	87	15	0
			3284	2092	581	589	22			

There are 6 discrepancies between the modelled and reference sequences:

Chain	Residue	Modelled	Actual	Comment	Reference
A	544	GLY	-	expression tag	UNP O75460
A	545	ALA	-	expression tag	UNP O75460
A	546	MET	-	expression tag	UNP O75460
B	544	GLY	-	expression tag	UNP O75460
B	545	ALA	-	expression tag	UNP O75460
B	546	MET	-	expression tag	UNP O75460

- Molecule 2 is 2,2,2-tris(fluoranyl)- {N}-[4-[3-[2-[[3 {S}]-piperidin-3-yl]amino]pyrimidin-4-yl]pyridin-2-yl]oxynaphthalen-1-yl]ethanesulfonamide (three-letter code: U4N) (formula: C<sub>26</sub>H<sub>25</sub>F<sub>3</sub>N<sub>6</sub>O<sub>3</sub>S).



Mol	Chain	Residues	Atoms					ZeroOcc	AltConf	
			Total	C	F	N	O			S
2	A	1	Total	C	F	N	O	S	0	0
			39	26	3	6	3	1		
2	B	1	Total	C	F	N	O	S	0	0
			39	26	3	6	3	1		

- Molecule 3 is GLYCEROL (three-letter code: GOL) (formula: C<sub>3</sub>H<sub>8</sub>O<sub>3</sub>).



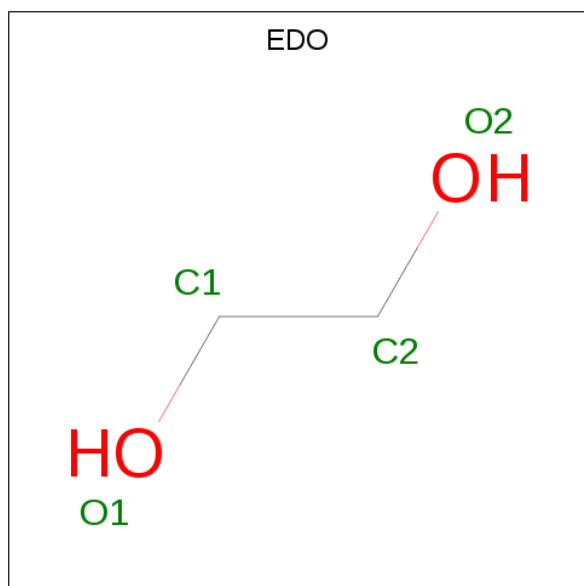
Mol	Chain	Residues	Atoms			ZeroOcc	AltConf
			Total	C	O		
3	A	1	Total	C	O	0	0
			6	3	3		
3	A	1	Total	C	O	0	0
			6	3	3		

*Continued on next page...*

Continued from previous page...

Mol	Chain	Residues	Atoms			ZeroOcc	AltConf
3	A	1	Total	C	O	0	0
			6	3	3		
3	A	1	Total	C	O	0	0
			6	3	3		
3	A	1	Total	C	O	0	0
			6	3	3		
3	A	1	Total	C	O	0	0
			6	3	3		
3	A	1	Total	C	O	0	0
			6	3	3		
3	B	1	Total	C	O	0	0
			6	3	3		
3	B	1	Total	C	O	0	0
			6	3	3		

- Molecule 4 is 1,2-ETHANEDIOL (three-letter code: EDO) (formula: C<sub>2</sub>H<sub>6</sub>O<sub>2</sub>).



Mol	Chain	Residues	Atoms			ZeroOcc	AltConf
4	A	1	Total	C	O	0	0
			4	2	2		
4	A	1	Total	C	O	0	0
			4	2	2		
4	A	1	Total	C	O	0	0
			4	2	2		

Continued on next page...

*Continued from previous page...*

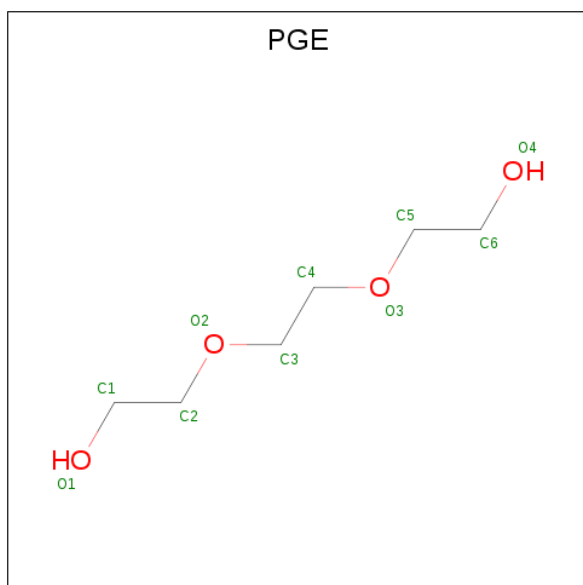
Mol	Chain	Residues	Atoms	ZeroOcc	AltConf
4	A	1	Total C O 4 2 2	0	0
4	A	1	Total C O 4 2 2	0	0
4	A	1	Total C O 4 2 2	0	0
4	A	1	Total C O 4 2 2	0	0
4	A	1	Total C O 4 2 2	0	0
4	A	1	Total C O 4 2 2	0	0
4	A	1	Total C O 4 2 2	0	0
4	A	1	Total C O 4 2 2	0	0
4	B	1	Total C O 4 2 2	0	0
4	B	1	Total C O 4 2 2	0	0
4	B	1	Total C O 4 2 2	0	0
4	B	1	Total C O 4 2 2	0	0
4	B	1	Total C O 4 2 2	0	0
4	B	1	Total C O 4 2 2	0	0
4	B	1	Total C O 4 2 2	0	0
4	B	1	Total C O 4 2 2	0	0

- Molecule 5 is DI(HYDROXYETHYL)ETHER (three-letter code: PEG) (formula: C<sub>4</sub>H<sub>10</sub>O<sub>3</sub>).



Mol	Chain	Residues	Atoms	ZeroOcc	AltConf
5	A	1	Total C O 7 4 3	0	0
5	B	1	Total C O 7 4 3	0	0
5	B	1	Total C O 7 4 3	0	0
5	B	1	Total C O 7 4 3	0	0

- Molecule 6 is TRIETHYLENE GLYCOL (three-letter code: PGE) (formula:  $C_6H_{14}O_4$ ).



Mol	Chain	Residues	Atoms			ZeroOcc	AltConf
6	B	1	Total	C	O	0	0
			10	6	4		

- Molecule 7 is water.

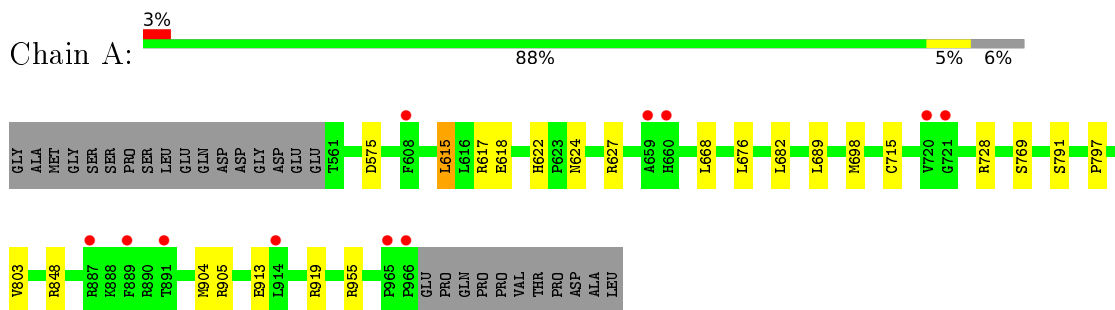
Mol	Chain	Residues	Atoms		ZeroOcc	AltConf
7	A	376	Total	O	0	7
			383	383		
7	B	253	Total	O	0	5
			258	258		



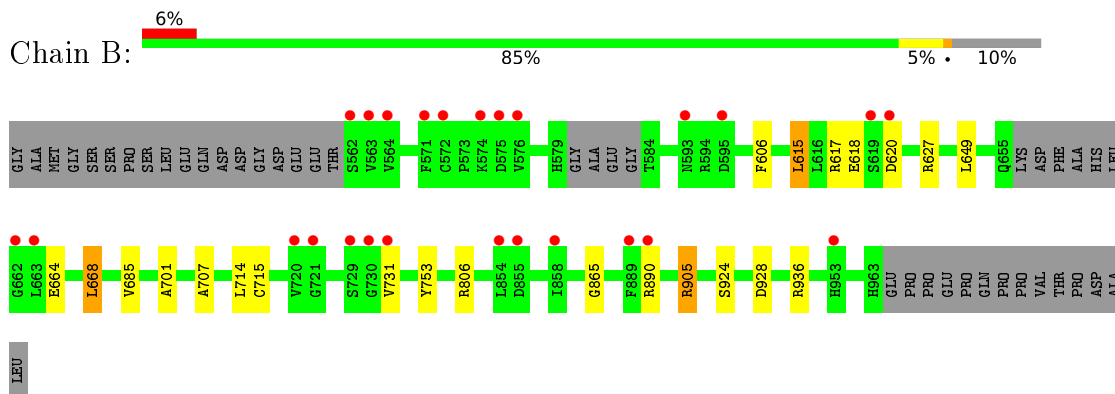
### 3 Residue-property plots [i](#)

These plots are drawn for all protein, RNA, DNA and oligosaccharide chains in the entry. The first graphic for a chain summarises the proportions of the various outlier classes displayed in the second graphic. The second graphic shows the sequence view annotated by issues in geometry and electron density. Residues are color-coded according to the number of geometric quality criteria for which they contain at least one outlier: green = 0, yellow = 1, orange = 2 and red = 3 or more. A red dot above a residue indicates a poor fit to the electron density ( $RSRZ > 2$ ). Stretches of 2 or more consecutive residues without any outlier are shown as a green connector. Residues present in the sample, but not in the model, are shown in grey.

- Molecule 1: Serine/threonine-protein kinase/endoribonuclease IRE1



- Molecule 1: Serine/threonine-protein kinase/endoribonuclease IRE1



## 4 Data and refinement statistics

Property	Value	Source
Space group	C 1 2 1	Depositor
Cell constants a, b, c, $\alpha$ , $\beta$ , $\gamma$	164.90Å 72.81Å 119.24Å 90.00° 129.82° 90.00°	Depositor
Resolution (Å)	91.59 – 1.85 44.41 – 1.85	Depositor EDS
% Data completeness (in resolution range)	98.4 (91.59-1.85) 98.4 (44.41-1.85)	Depositor EDS
$R_{merge}$	0.04	Depositor
$R_{sym}$	(Not available)	Depositor
$\langle I/\sigma(I) \rangle$ <sup>1</sup>	1.45 (at 1.86Å)	Xtrriage
Refinement program	REFMAC 5.8.0155	Depositor
R, $R_{free}$	0.191 , 0.235 0.199 , 0.244	Depositor DCC
$R_{free}$ test set	2411 reflections (2.64%)	wwPDB-VP
Wilson B-factor (Å <sup>2</sup> )	33.6	Xtrriage
Anisotropy	0.170	Xtrriage
Bulk solvent $k_{sol}$ (e/Å <sup>3</sup> ), $B_{sol}$ (Å <sup>2</sup> )	0.33 , 49.3	EDS
L-test for twinning <sup>2</sup>	$\langle  L  \rangle = 0.49$ , $\langle L^2 \rangle = 0.33$	Xtrriage
Estimated twinning fraction	No twinning to report.	Xtrriage
$F_o, F_c$ correlation	0.96	EDS
Total number of atoms	7573	wwPDB-VP
Average B, all atoms (Å <sup>2</sup> )	42.0	wwPDB-VP

Xtrriage's analysis on translational NCS is as follows: *The largest off-origin peak in the Patterson function is 5.32% of the height of the origin peak. No significant pseudotranslation is detected.*

<sup>1</sup>Intensities estimated from amplitudes.

<sup>2</sup>Theoretical values of  $\langle |L| \rangle$ ,  $\langle L^2 \rangle$  for acentric reflections are 0.5, 0.333 respectively for untwinned datasets, and 0.375, 0.2 for perfectly twinned datasets.

## 5 Model quality [i](#)

### 5.1 Standard geometry [i](#)

Bond lengths and bond angles in the following residue types are not validated in this section: GOL, PGE, U4N, PEG, EDO

The Z score for a bond length (or angle) is the number of standard deviations the observed value is removed from the expected value. A bond length (or angle) with  $|Z| > 5$  is considered an outlier worth inspection. RMSZ is the root-mean-square of all Z scores of the bond lengths (or angles).

Mol	Chain	Bond lengths		Bond angles	
		RMSZ	# Z  >5	RMSZ	# Z  >5
1	A	0.64	0/3497	0.84	5/4722 (0.1%)
1	B	0.59	0/3387	0.82	7/4569 (0.2%)
All	All	0.62	0/6884	0.83	12/9291 (0.1%)

There are no bond length outliers.

All (12) bond angle outliers are listed below:

Mol	Chain	Res	Type	Atoms	Z	Observed(°)	Ideal(°)
1	A	919	ARG	NE-CZ-NH1	6.49	123.54	120.30
1	B	668[A]	LEU	CA-CB-CG	6.14	129.43	115.30
1	B	668[B]	LEU	CA-CB-CG	6.14	129.43	115.30
1	A	904[A]	MET	CG-SD-CE	-5.84	90.85	100.20
1	A	904[B]	MET	CG-SD-CE	-5.84	90.85	100.20
1	B	668[A]	LEU	CB-CG-CD2	-5.75	101.22	111.00
1	B	668[B]	LEU	CB-CG-CD2	-5.75	101.22	111.00
1	A	848	ARG	NE-CZ-NH1	5.39	122.99	120.30
1	B	890	ARG	NE-CZ-NH1	5.33	122.97	120.30
1	B	806	ARG	NE-CZ-NH1	5.22	122.91	120.30
1	A	627	ARG	NE-CZ-NH1	5.18	122.89	120.30
1	B	606	PHE	CB-CG-CD1	5.06	124.34	120.80

There are no chirality outliers.

There are no planarity outliers.

### 5.2 Too-close contacts [i](#)

In the following table, the Non-H and H(model) columns list the number of non-hydrogen atoms and hydrogen atoms in the chain respectively. The H(added) column lists the number of hydrogen

atoms added and optimized by MolProbity. The Clashes column lists the number of clashes within the asymmetric unit, whereas Symm-Clashes lists symmetry-related clashes.

Mol	Chain	Non-H	H(model)	H(added)	Clashes	Symm-Clashes
1	A	3396	0	3365	19	0
1	B	3284	0	3268	15	0
2	A	39	0	0	0	0
2	B	39	0	0	0	0
3	A	48	0	64	2	0
3	B	12	0	16	1	0
4	A	44	0	66	7	0
4	B	32	0	48	3	0
5	A	7	0	10	0	0
5	B	21	0	30	2	0
6	B	10	0	14	1	0
7	A	383	0	0	2	0
7	B	258	0	0	2	0
All	All	7573	0	6881	34	0

The all-atom clashscore is defined as the number of clashes found per 1000 atoms (including hydrogen atoms). The all-atom clashscore for this structure is 3.

All (34) close contacts within the same asymmetric unit are listed below, sorted by their clash magnitude.

Atom-1	Atom-2	Interatomic distance (Å)	Clash overlap (Å)
1:A:575[B]:ASP:OD2	7:A:1101:HOH:O	1.52	1.20
1:A:617[A]:ARG:HG2	1:A:618[A]:GLU:N	1.44	1.16
1:A:617[A]:ARG:CG	1:A:618[A]:GLU:H	1.67	1.04
1:A:617[A]:ARG:HG2	1:A:618[A]:GLU:H	0.84	0.99
1:A:617[A]:ARG:CG	1:A:618[A]:GLU:N	2.22	0.98
1:A:698[B]:MET:SD	4:A:1005:EDO:O1	2.27	0.91
1:A:622[B]:HIS:HE1	7:A:1283[B]:HOH:O	1.61	0.83
1:B:620[B]:ASP:N	7:B:1321[B]:HOH:O	2.08	0.81
1:B:617[B]:ARG:HG3	1:B:618[B]:GLU:N	1.97	0.80
1:A:682:LEU:HA	4:A:1014:EDO:H12	1.76	0.68
1:B:668[A]:LEU:HD12	1:B:707:ALA:HB2	1.84	0.59
1:A:803:VAL:HG22	4:A:1018:EDO:H12	1.90	0.54
1:B:685:VAL:HG22	1:B:753[B]:TYR:CD1	2.45	0.52
1:B:865:GLY:H	6:B:1007:PGE:H4	1.75	0.52
1:A:622[A]:HIS:CD2	1:A:624:ASN:H	2.29	0.51
4:A:1014:EDO:H21	1:B:701:ALA:HB1	1.94	0.49
1:B:905:ARG:HH12	3:B:1002:GOL:H12	1.80	0.46
1:A:797:PRO:HA	4:A:1018:EDO:H11	1.95	0.46

*Continued on next page...*

Continued from previous page...

Atom-1	Atom-2	Interatomic distance (Å)	Clash overlap (Å)
1:B:936:ARG:HH12	4:B:1013:EDO:C1	2.28	0.46
1:A:791:SER:HB3	3:A:1016:GOL:H12	1.97	0.46
1:B:615:LEU:HD23	1:B:715[B]:CYS:SG	2.55	0.45
1:B:936:ARG:HH12	4:B:1013:EDO:H12	1.80	0.44
1:A:676:LEU:HD13	1:A:689[B]:LEU:HD11	2.01	0.43
1:A:797:PRO:HA	4:A:1018:EDO:C1	2.50	0.42
1:A:615:LEU:HD23	1:A:715[A]:CYS:SG	2.60	0.41
1:A:698[A]:MET:CE	4:A:1005:EDO:O1	2.68	0.41
1:A:769:SER:HA	3:A:1010:GOL:O2	2.21	0.41
1:B:649:LEU:HD11	1:B:668[A]:LEU:HD21	2.02	0.41
1:B:664:GLU:HG3	7:B:1281:HOH:O	2.19	0.41
1:B:924:SER:OG	5:B:1006:PEG:H12	2.20	0.41
1:B:714:LEU:HD22	1:B:731:VAL:HG13	2.03	0.41
1:A:913[B]:GLU:CA	1:A:913[B]:GLU:OE2	2.68	0.41
1:A:955:ARG:HE	5:B:1006:PEG:H41	1.86	0.41
1:B:928:ASP:O	4:B:1012:EDO:H21	2.21	0.40

There are no symmetry-related clashes.

## 5.3 Torsion angles [i](#)

### 5.3.1 Protein backbone [i](#)

In the following table, the Percentiles column shows the percent Ramachandran outliers of the chain as a percentile score with respect to all X-ray entries followed by that with respect to entries of similar resolution.

The Analysed column shows the number of residues for which the backbone conformation was analysed, and the total number of residues.

Mol	Chain	Analysed	Favoured	Allowed	Outliers	Percentiles	
1	A	420/434 (97%)	415 (99%)	5 (1%)	0	100	100
1	B	401/434 (92%)	396 (99%)	5 (1%)	0	100	100
All	All	821/868 (95%)	811 (99%)	10 (1%)	0	100	100

There are no Ramachandran outliers to report.

### 5.3.2 Protein sidechains [i](#)

In the following table, the Percentiles column shows the percent sidechain outliers of the chain as a percentile score with respect to all X-ray entries followed by that with respect to entries of similar resolution.

The Analysed column shows the number of residues for which the sidechain conformation was analysed, and the total number of residues.

Mol	Chain	Analysed	Rotameric	Outliers	Percentiles	
1	A	376/383 (98%)	372 (99%)	4 (1%)	73	65
1	B	365/383 (95%)	362 (99%)	3 (1%)	81	76
All	All	741/766 (97%)	734 (99%)	7 (1%)	76	72

All (7) residues with a non-rotameric sidechain are listed below:

Mol	Chain	Res	Type
1	A	615	LEU
1	A	668	LEU
1	A	728	ARG
1	A	905	ARG
1	B	615	LEU
1	B	627	ARG
1	B	905	ARG

Sometimes sidechains can be flipped to improve hydrogen bonding and reduce clashes. All (1) such sidechains are listed below:

Mol	Chain	Res	Type
1	A	624	ASN

### 5.3.3 RNA [i](#)

There are no RNA molecules in this entry.

## 5.4 Non-standard residues in protein, DNA, RNA chains [i](#)

There are no non-standard protein/DNA/RNA residues in this entry.

### 5.5 Carbohydrates [i](#)

There are no monosaccharides in this entry.

## 5.6 Ligand geometry

36 ligands are modelled in this entry.

In the following table, the Counts columns list the number of bonds (or angles) for which Mogul statistics could be retrieved, the number of bonds (or angles) that are observed in the model and the number of bonds (or angles) that are defined in the Chemical Component Dictionary. The Link column lists molecule types, if any, to which the group is linked. The Z score for a bond length (or angle) is the number of standard deviations the observed value is removed from the expected value. A bond length (or angle) with  $|Z| > 2$  is considered an outlier worth inspection. RMSZ is the root-mean-square of all Z scores of the bond lengths (or angles).

Mol	Type	Chain	Res	Link	Bond lengths			Bond angles		
					Counts	RMSZ	# Z  > 2	Counts	RMSZ	# Z  > 2
4	EDO	A	1014	-	3,3,3	0.41	0	2,2,2	0.05	0
2	U4N	B	1001	-	42,43,43	1.12	4 (9%)	51,62,62	2.51	9 (17%)
4	EDO	B	1013	-	3,3,3	0.32	0	2,2,2	0.38	0
4	EDO	A	1015	-	3,3,3	0.50	0	2,2,2	0.28	0
4	EDO	B	1003	-	3,3,3	0.44	0	2,2,2	0.26	0
6	PGE	B	1007	-	9,9,9	0.47	0	8,8,8	0.45	0
3	GOL	A	1016	-	5,5,5	0.20	0	5,5,5	0.38	0
3	GOL	B	1005	-	5,5,5	0.28	0	5,5,5	0.56	0
4	EDO	A	1011	-	3,3,3	0.51	0	2,2,2	0.07	0
3	GOL	A	1004	-	5,5,5	0.23	0	5,5,5	0.25	0
3	GOL	A	1010	-	5,5,5	0.31	0	5,5,5	0.37	0
3	GOL	A	1017	-	5,5,5	0.27	0	5,5,5	0.29	0
5	PEG	A	1021	-	6,6,6	0.41	0	5,5,5	0.20	0
4	EDO	A	1008	-	3,3,3	0.47	0	2,2,2	0.34	0
4	EDO	A	1018	-	3,3,3	0.24	0	2,2,2	0.21	0
5	PEG	B	1004	-	6,6,6	0.47	0	5,5,5	0.36	0
4	EDO	B	1015	-	3,3,3	0.47	0	2,2,2	0.19	0
4	EDO	A	1020	-	3,3,3	0.17	0	2,2,2	0.11	0
4	EDO	B	1010	-	3,3,3	0.50	0	2,2,2	0.14	0
4	EDO	B	1011	-	3,3,3	0.40	0	2,2,2	0.31	0
3	GOL	A	1002	-	5,5,5	0.24	0	5,5,5	0.22	0
4	EDO	A	1012	-	3,3,3	0.49	0	2,2,2	0.41	0
4	EDO	B	1008	-	3,3,3	0.46	0	2,2,2	0.21	0
4	EDO	A	1005	-	3,3,3	0.31	0	2,2,2	0.18	0
5	PEG	B	1009	-	6,6,6	0.39	0	5,5,5	0.39	0
4	EDO	A	1019	-	3,3,3	0.42	0	2,2,2	0.21	0
4	EDO	B	1014	-	3,3,3	0.45	0	2,2,2	0.09	0
5	PEG	B	1006	-	6,6,6	0.34	0	5,5,5	0.26	0
3	GOL	A	1003	-	5,5,5	0.22	0	5,5,5	0.23	0
3	GOL	B	1002	-	5,5,5	0.25	0	5,5,5	0.25	0
4	EDO	A	1013	-	3,3,3	0.44	0	2,2,2	0.18	0
4	EDO	A	1006	-	3,3,3	0.43	0	2,2,2	0.30	0

Mol	Type	Chain	Res	Link	Bond lengths			Bond angles		
					Counts	RMSZ	# Z  > 2	Counts	RMSZ	# Z  > 2
3	GOL	A	1009	-	5,5,5	0.29	0	5,5,5	0.28	0
3	GOL	A	1007	-	5,5,5	0.25	0	5,5,5	0.39	0
2	U4N	A	1001	-	42,43,43	1.13	4 (9%)	51,62,62	2.27	11 (21%)
4	EDO	B	1012	-	3,3,3	0.42	0	2,2,2	0.39	0

In the following table, the Chirals column lists the number of chiral outliers, the number of chiral centers analysed, the number of these observed in the model and the number defined in the Chemical Component Dictionary. Similar counts are reported in the Torsion and Rings columns. '-' means no outliers of that kind were identified.

Mol	Type	Chain	Res	Link	Chirals	Torsions	Rings
4	EDO	A	1014	-	-	0/1/1/1	-
2	U4N	B	1001	-	-	5/23/31/31	0/5/5/5
4	EDO	B	1013	-	-	1/1/1/1	-
4	EDO	A	1015	-	-	0/1/1/1	-
4	EDO	B	1003	-	-	0/1/1/1	-
6	PGE	B	1007	-	-	4/7/7/7	-
3	GOL	A	1016	-	-	1/4/4/4	-
3	GOL	B	1005	-	-	0/4/4/4	-
4	EDO	A	1011	-	-	0/1/1/1	-
3	GOL	A	1004	-	-	0/4/4/4	-
3	GOL	A	1010	-	-	0/4/4/4	-
3	GOL	A	1017	-	-	0/4/4/4	-
5	PEG	A	1021	-	-	0/4/4/4	-
4	EDO	A	1008	-	-	1/1/1/1	-
4	EDO	A	1018	-	-	0/1/1/1	-
5	PEG	B	1004	-	-	1/4/4/4	-
4	EDO	B	1015	-	-	0/1/1/1	-
4	EDO	A	1020	-	-	0/1/1/1	-
4	EDO	B	1010	-	-	0/1/1/1	-
4	EDO	B	1011	-	-	0/1/1/1	-
3	GOL	A	1002	-	-	0/4/4/4	-
4	EDO	A	1012	-	-	1/1/1/1	-
4	EDO	B	1008	-	-	0/1/1/1	-
4	EDO	A	1005	-	-	0/1/1/1	-
5	PEG	B	1009	-	-	1/4/4/4	-
4	EDO	A	1019	-	-	0/1/1/1	-
4	EDO	B	1014	-	-	0/1/1/1	-
5	PEG	B	1006	-	-	2/4/4/4	-
3	GOL	A	1003	-	-	1/4/4/4	-
3	GOL	B	1002	-	-	0/4/4/4	-
4	EDO	A	1013	-	-	0/1/1/1	-

Continued on next page...



Continued from previous page...

Mol	Type	Chain	Res	Link	Chirals	Torsions	Rings
4	EDO	A	1006	-	-	0/1/1/1	-
3	GOL	A	1009	-	-	1/4/4/4	-
3	GOL	A	1007	-	-	0/4/4/4	-
2	U4N	A	1001	-	-	3/23/31/31	0/5/5/5
4	EDO	B	1012	-	-	0/1/1/1	-

All (8) bond length outliers are listed below:

Mol	Chain	Res	Type	Atoms	Z	Observed(Å)	Ideal(Å)
2	A	1001	U4N	C5-C2	3.27	1.55	1.48
2	B	1001	U4N	C23-N27	2.86	1.38	1.34
2	B	1001	U4N	C5-C2	2.56	1.53	1.48
2	A	1001	U4N	O14-C13	-2.45	1.34	1.40
2	B	1001	U4N	O14-C13	-2.21	1.34	1.40
2	A	1001	U4N	C5-S6	2.19	1.82	1.78
2	A	1001	U4N	C10-N9	-2.09	1.38	1.42
2	B	1001	U4N	C20-C15	2.04	1.43	1.41

All (20) bond angle outliers are listed below:

Mol	Chain	Res	Type	Atoms	Z	Observed(°)	Ideal(°)
2	B	1001	U4N	C21-N22-C23	9.25	124.31	116.69
2	B	1001	U4N	C13-O14-C15	8.43	130.12	117.89
2	A	1001	U4N	C21-N22-C23	7.88	123.18	116.69
2	A	1001	U4N	C13-O14-C15	6.87	127.85	117.89
2	B	1001	U4N	N24-C23-N22	-6.18	120.70	126.55
2	A	1001	U4N	N24-C23-N22	-6.09	120.78	126.55
2	B	1001	U4N	C26-C21-N22	-5.66	114.64	121.97
2	A	1001	U4N	C25-N24-C23	5.62	120.43	115.45
2	B	1001	U4N	C25-N24-C23	5.04	119.92	115.45
2	A	1001	U4N	C26-C21-N22	-4.71	115.86	121.97
2	B	1001	U4N	C25-C26-C21	3.17	120.21	117.22
2	B	1001	U4N	C26-C25-N24	-3.00	120.23	123.96
2	A	1001	U4N	N27-C23-N22	2.95	121.61	117.18
2	A	1001	U4N	C26-C25-N24	-2.84	120.43	123.96
2	A	1001	U4N	C17-N16-C15	2.42	122.22	116.43
2	B	1001	U4N	C17-N16-C15	2.30	121.93	116.43
2	B	1001	U4N	N27-C23-N22	2.27	120.59	117.18
2	A	1001	U4N	C25-C26-C21	2.19	119.29	117.22
2	A	1001	U4N	O14-C15-C20	2.15	118.75	116.61
2	A	1001	U4N	C18-C17-N16	-2.07	120.05	123.43

There are no chirality outliers.

All (22) torsion outliers are listed below:

Mol	Chain	Res	Type	Atoms
6	B	1007	PGE	O1-C1-C2-O2
3	A	1016	GOL	O1-C1-C2-C3
4	A	1008	EDO	O1-C1-C2-O2
5	B	1009	PEG	O1-C1-C2-O2
2	B	1001	U4N	C19-C20-C21-C26
5	B	1006	PEG	O1-C1-C2-O2
2	B	1001	U4N	C19-C20-C21-N22
2	B	1001	U4N	C15-C20-C21-C26
6	B	1007	PGE	O3-C5-C6-O4
6	B	1007	PGE	O2-C3-C4-O3
4	A	1012	EDO	O1-C1-C2-O2
2	B	1001	U4N	C15-C20-C21-N22
5	B	1004	PEG	O2-C3-C4-O4
2	A	1001	U4N	C19-C20-C21-C26
2	A	1001	U4N	C19-C20-C21-N22
6	B	1007	PGE	C6-C5-O3-C4
4	B	1013	EDO	O1-C1-C2-O2
5	B	1006	PEG	C1-C2-O2-C3
3	A	1003	GOL	O1-C1-C2-C3
3	A	1009	GOL	O1-C1-C2-C3
2	B	1001	U4N	C34-C13-O14-C15
2	A	1001	U4N	C15-C20-C21-C26

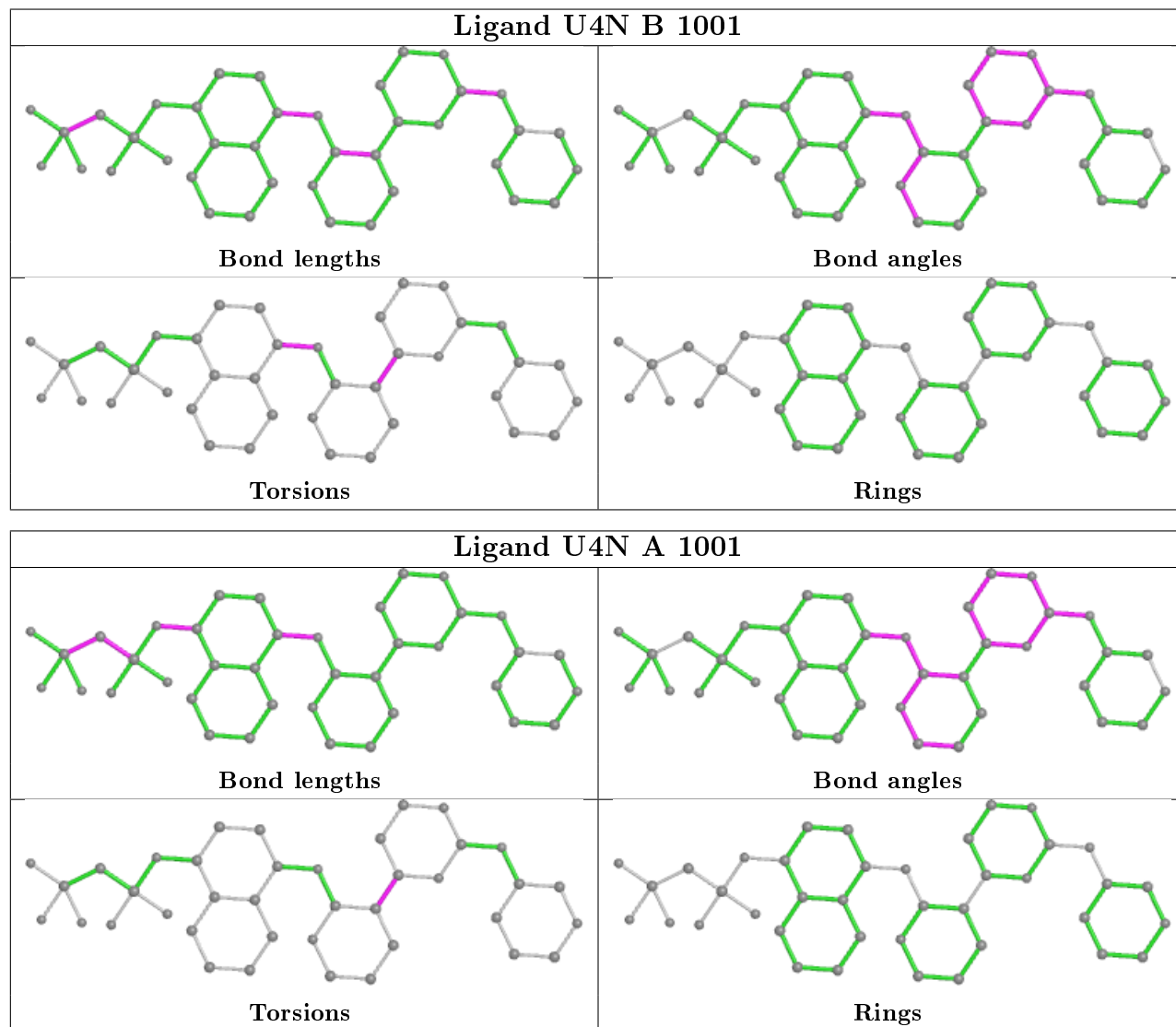
There are no ring outliers.

10 monomers are involved in 16 short contacts:

Mol	Chain	Res	Type	Clashes	Symm-Clashes
4	A	1014	EDO	2	0
4	B	1013	EDO	2	0
6	B	1007	PGE	1	0
3	A	1016	GOL	1	0
3	A	1010	GOL	1	0
4	A	1018	EDO	3	0
4	A	1005	EDO	2	0
5	B	1006	PEG	2	0
3	B	1002	GOL	1	0
4	B	1012	EDO	1	0

The following is a two-dimensional graphical depiction of Mogul quality analysis of bond lengths, bond angles, torsion angles, and ring geometry for all instances of the Ligand of Interest. In

addition, ligands with molecular weight  $> 250$  and outliers as shown on the validation Tables will also be included. For torsion angles, if less than 5% of the Mogul distribution of torsion angles is within 10 degrees of the torsion angle in question, then that torsion angle is considered an outlier. Any bond that is central to one or more torsion angles identified as an outlier by Mogul will be highlighted in the graph. For rings, the root-mean-square deviation (RMSD) between the ring in question and similar rings identified by Mogul is calculated over all ring torsion angles. If the average RMSD is greater than 60 degrees and the minimal RMSD between the ring in question and any Mogul-identified rings is also greater than 60 degrees, then that ring is considered an outlier. The outliers are highlighted in purple. The color gray indicates Mogul did not find sufficient equivalents in the CSD to analyse the geometry.



## 5.7 Other polymers [i](#)

There are no such residues in this entry.

## 5.8 Polymer linkage issues

There are no chain breaks in this entry.

## 6 Fit of model and data [i](#)

### 6.1 Protein, DNA and RNA chains [i](#)

In the following table, the column labelled '#RSRZ > 2' contains the number (and percentage) of RSRZ outliers, followed by percent RSRZ outliers for the chain as percentile scores relative to all X-ray entries and entries of similar resolution. The OWAB column contains the minimum, median, 95<sup>th</sup> percentile and maximum values of the occupancy-weighted average B-factor per residue. The column labelled 'Q < 0.9' lists the number of (and percentage) of residues with an average occupancy less than 0.9.

Mol	Chain	Analysed	<RSRZ>	#RSRZ>2	OWAB(Å <sup>2</sup> )	Q<0.9
1	A	406/434 (93%)	-0.10	11 (2%) 54 53	18, 34, 63, 129	20 (4%)
1	B	392/434 (90%)	0.09	25 (6%) 19 18	22, 41, 75, 110	25 (6%)
All	All	798/868 (91%)	-0.01	36 (4%) 33 32	18, 37, 71, 129	45 (5%)

All (36) RSRZ outliers are listed below:

Mol	Chain	Res	Type	RSRZ
1	A	966	PRO	7.0
1	B	563	VAL	6.1
1	B	572	CYS	5.6
1	A	720	VAL	4.8
1	A	965	PRO	4.8
1	B	562	SER	4.6
1	A	889	PHE	4.1
1	B	721	GLY	3.9
1	B	730	GLY	3.7
1	B	620[A]	ASP	3.7
1	B	564	VAL	3.5
1	B	574	LYS	3.5
1	A	887	ARG	3.5
1	B	890	ARG	3.3
1	B	855	ASP	3.3
1	A	660	HIS	3.3
1	B	731	VAL	3.2
1	B	663	LEU	3.2
1	B	720	VAL	2.9
1	B	571	PHE	2.9
1	B	662	GLY	2.9
1	A	891	THR	2.8
1	B	576	VAL	2.8
1	B	729	SER	2.8

*Continued on next page...*

*Continued from previous page...*

Mol	Chain	Res	Type	RSRZ
1	A	721	GLY	2.6
1	B	953[A]	HIS	2.5
1	B	575	ASP	2.4
1	B	858	ILE	2.3
1	B	889	PHE	2.2
1	B	854	LEU	2.2
1	B	593	ASN	2.1
1	A	659	ALA	2.1
1	A	914	LEU	2.1
1	A	608	PHE	2.1
1	B	595	ASP	2.1
1	B	619[A]	SER	2.0

## 6.2 Non-standard residues in protein, DNA, RNA chains [i](#)

There are no non-standard protein/DNA/RNA residues in this entry.

## 6.3 Carbohydrates [i](#)

There are no monosaccharides in this entry.

## 6.4 Ligands [i](#)

In the following table, the Atoms column lists the number of modelled atoms in the group and the number defined in the chemical component dictionary. The B-factors column lists the minimum, median, 95<sup>th</sup> percentile and maximum values of B factors of atoms in the group. The column labelled 'Q< 0.9' lists the number of atoms with occupancy less than 0.9.

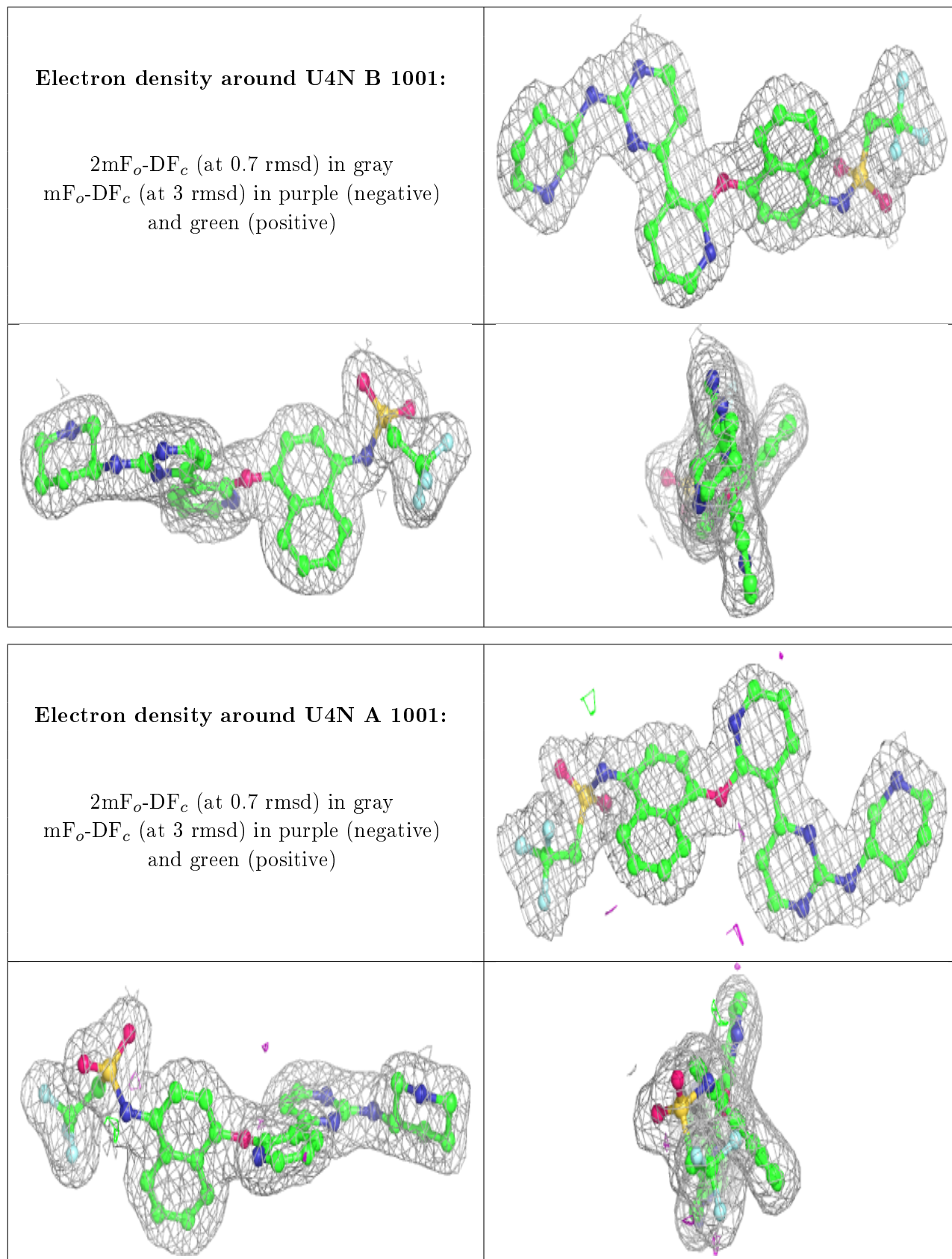
Mol	Type	Chain	Res	Atoms	RSCC	RSR	B-factors(Å <sup>2</sup> )	Q<0.9
4	EDO	B	1013	4/4	0.33	0.30	72,73,76,83	0
4	EDO	A	1012	4/4	0.52	0.38	50,57,67,69	0
5	PEG	B	1004	7/7	0.56	0.26	68,81,85,87	0
4	EDO	B	1015	4/4	0.59	0.31	85,86,102,103	0
3	GOL	A	1017	6/6	0.66	0.11	54,71,73,81	0
3	GOL	A	1004	6/6	0.68	0.17	54,57,60,63	0
4	EDO	A	1015	4/4	0.69	0.19	51,71,72,75	0
5	PEG	B	1006	7/7	0.69	0.19	57,74,87,95	0
4	EDO	B	1010	4/4	0.71	0.17	43,51,60,60	0
5	PEG	A	1021	7/7	0.72	0.30	50,68,79,85	0
4	EDO	B	1011	4/4	0.73	0.28	50,55,56,59	0

*Continued on next page...*

*Continued from previous page...*

Mol	Type	Chain	Res	Atoms	RSCC	RSR	B-factors( $\text{\AA}^2$ )	Q<0.9
6	PGE	B	1007	10/10	0.73	0.22	63,75,85,86	0
4	EDO	A	1006	4/4	0.74	0.19	65,72,73,74	0
5	PEG	B	1009	7/7	0.75	0.29	62,72,81,103	0
4	EDO	B	1008	4/4	0.76	0.20	67,69,74,79	0
4	EDO	A	1005	4/4	0.78	0.19	34,35,36,40	4
3	GOL	A	1002	6/6	0.78	0.25	58,59,73,74	0
3	GOL	A	1003	6/6	0.79	0.19	55,76,77,86	0
4	EDO	A	1018	4/4	0.79	0.19	42,52,53,60	0
3	GOL	B	1005	6/6	0.80	0.23	71,90,96,105	0
3	GOL	A	1007	6/6	0.80	0.12	60,65,66,82	0
3	GOL	A	1009	6/6	0.83	0.17	51,58,62,73	0
4	EDO	B	1012	4/4	0.84	0.30	58,59,64,64	0
4	EDO	B	1014	4/4	0.84	0.21	57,61,62,67	0
4	EDO	A	1011	4/4	0.85	0.09	47,61,61,63	0
3	GOL	B	1002	6/6	0.86	0.11	55,68,75,81	0
4	EDO	B	1003	4/4	0.86	0.16	64,70,71,77	0
4	EDO	A	1014	4/4	0.87	0.30	62,64,65,72	0
3	GOL	A	1010	6/6	0.90	0.26	43,56,70,71	0
4	EDO	A	1013	4/4	0.90	0.27	73,74,76,79	0
3	GOL	A	1016	6/6	0.90	0.24	56,61,67,71	0
4	EDO	A	1019	4/4	0.91	0.16	58,58,65,73	0
4	EDO	A	1008	4/4	0.91	0.22	26,42,51,71	0
4	EDO	A	1020	4/4	0.92	0.10	60,64,65,75	0
2	U4N	B	1001	39/39	0.97	0.07	27,34,45,58	0
2	U4N	A	1001	39/39	0.98	0.08	20,27,34,37	0

The following is a graphical depiction of the model fit to experimental electron density of all instances of the Ligand of Interest. In addition, ligands with molecular weight > 250 and outliers as shown on the geometry validation Tables will also be included. Each fit is shown from different orientation to approximate a three-dimensional view.





## 6.5 Other polymers

There are no such residues in this entry.