



Full wwPDB EM Validation Report ⓘ

Dec 18, 2022 – 07:03 pm GMT

PDB ID : 6YW7
EMDB ID : EMD-10960
Title : Cryo-EM structure of the ARP2/3 1A5C isoform complex.
Authors : von Loeffelholz, O.; Moores, C.; Purkiss, A.
Deposited on : 2020-04-29
Resolution : 4.50 Å (reported)

This is a Full wwPDB EM Validation Report for a publicly released PDB entry.

We welcome your comments at validation@mail.wwpdb.org

A user guide is available at

<https://www.wwpdb.org/validation/2017/EMValidationReportHelp>

with specific help available everywhere you see the ⓘ symbol.

The types of validation reports are described at

<http://www.wwpdb.org/validation/2017/FAQs#types>.

The following versions of software and data (see [references ⓘ](#)) were used in the production of this report:

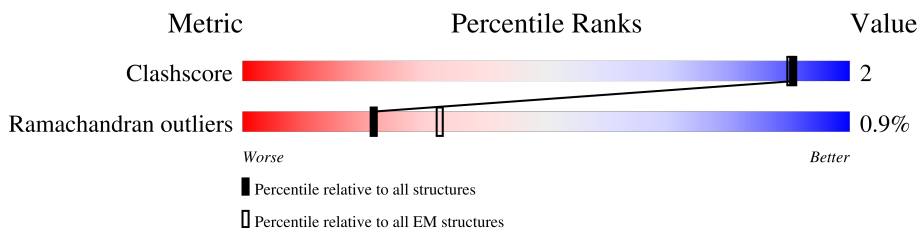
EMDB validation analysis : 0.0.1.dev43
Mogul : 1.8.4, CSD as541be (2020)
MolProbity : 4.02b-467
buster-report : 1.1.7 (2018)
Percentile statistics : 20191225.v01 (using entries in the PDB archive December 25th 2019)
MapQ : 1.9.9
Ideal geometry (proteins) : Engh & Huber (2001)
Ideal geometry (DNA, RNA) : Parkinson et al. (1996)
Validation Pipeline (wwPDB-VP) : 2.31.3

1 Overall quality at a glance i

The following experimental techniques were used to determine the structure:
ELECTRON MICROSCOPY

The reported resolution of this entry is 4.50 Å.

Percentile scores (ranging between 0-100) for global validation metrics of the entry are shown in the following graphic. The table shows the number of entries on which the scores are based.



Metric	Whole archive (#Entries)	EM structures (#Entries)
Clashscore	158937	4297
Ramachandran outliers	154571	4023

The table below summarises the geometric issues observed across the polymeric chains and their fit to the map. The red, orange, yellow and green segments of the bar indicate the fraction of residues that contain outliers for ≥ 3 , 2, 1 and 0 types of geometric quality criteria respectively. A grey segment represents the fraction of residues that are not modelled. The numeric value for each fraction is indicated below the corresponding segment, with a dot representing fractions $\leq 5\%$. The upper red bar (where present) indicates the fraction of residues that have poor fit to the EM map (all-atom inclusion $< 40\%$). The numeric value is given above the bar.

Mol	Chain	Length	Quality of chain
1	A	418	
2	D	300	
3	E	178	
4	B	394	
5	F	168	
6	G	151	
7	C	370	

2 Entry composition [i](#)

There are 8 unique types of molecules in this entry. The entry contains 5426 atoms, of which 0 are hydrogens and 0 are deuteriums.

In the tables below, the AltConf column contains the number of residues with at least one atom in alternate conformation and the Trace column contains the number of residues modelled with at most 2 atoms.

- Molecule 1 is a protein called Actin-related protein 3.

Mol	Chain	Residues	Atoms			AltConf	Trace
			Total	C	N		
1	A	396	1188	792	396	0	0

- Molecule 2 is a protein called Actin-related protein 2/3 complex subunit 2.

Mol	Chain	Residues	Atoms			AltConf	Trace
			Total	C	N		
2	D	284	852	568	284	0	0

- Molecule 3 is a protein called Actin-related protein 2/3 complex subunit 3.

Mol	Chain	Residues	Atoms			AltConf	Trace
			Total	C	N		
3	E	170	510	340	170	0	0

- Molecule 4 is a protein called Actin-related protein 2.

Mol	Chain	Residues	Atoms			AltConf	Trace
			Total	C	N		
4	B	286	858	572	286	0	0

There is a discrepancy between the modelled and reference sequences:

Chain	Residue	Modelled	Actual	Comment	Reference
B	35	ILE	LEU	conflict	UNP P61160

- Molecule 5 is a protein called Actin-related protein 2/3 complex subunit 4.

Mol	Chain	Residues	Atoms			AltConf	Trace
			Total	C	N		
5	F	165	495	330	165	0	0

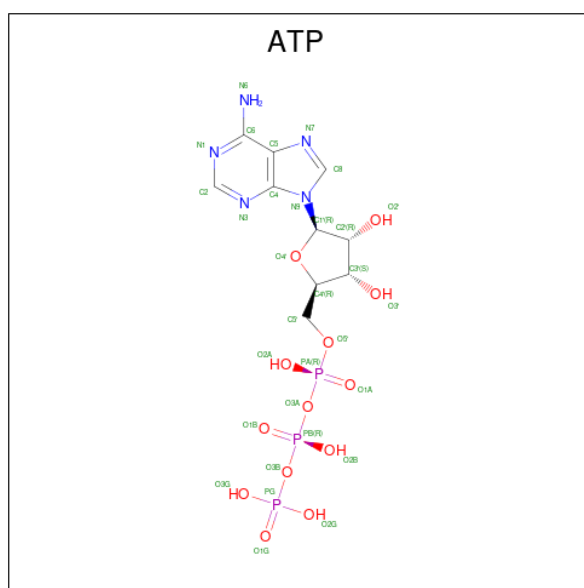
- Molecule 6 is a protein called Actin-related protein 2/3 complex subunit 5.

Mol	Chain	Residues	Atoms			AltConf	Trace
			Total	C	N		
6	G	139	417	278	139	0	0

- Molecule 7 is a protein called Actin-related protein 2/3 complex subunit 1A.

Mol	Chain	Residues	Atoms			AltConf	Trace
			Total	C	N		
7	C	348	1044	696	348	0	0

- Molecule 8 is ADENOSINE-5'-TRIPHOSPHATE (three-letter code: ATP) (formula: $C_{10}H_{16}N_5O_{13}P_3$) (labeled as "Ligand of Interest" by depositor).

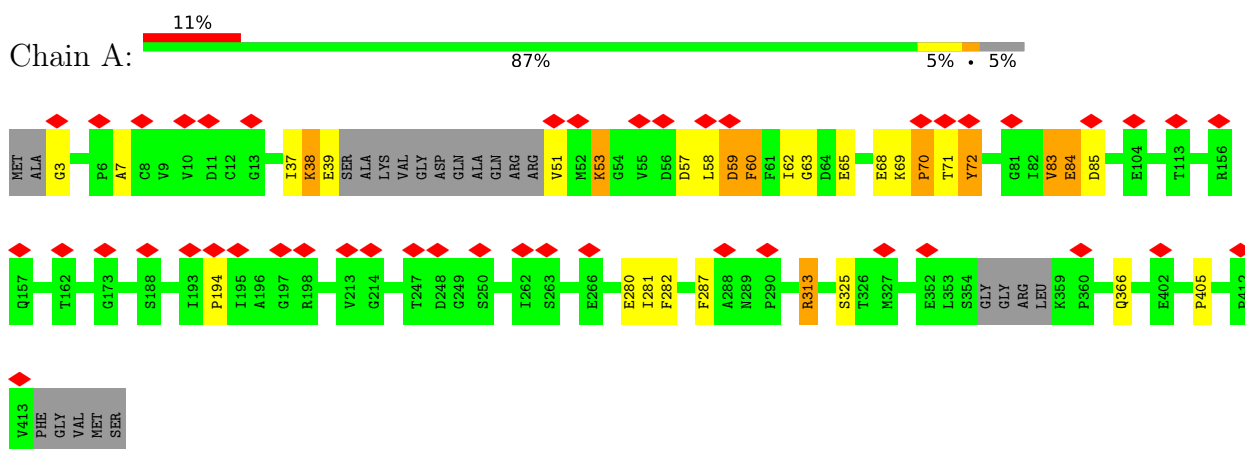


Mol	Chain	Residues	Atoms					AltConf
			Total	C	N	O	P	
8	A	1	31	10	5	13	3	0
8	B	1	31	10	5	13	3	0

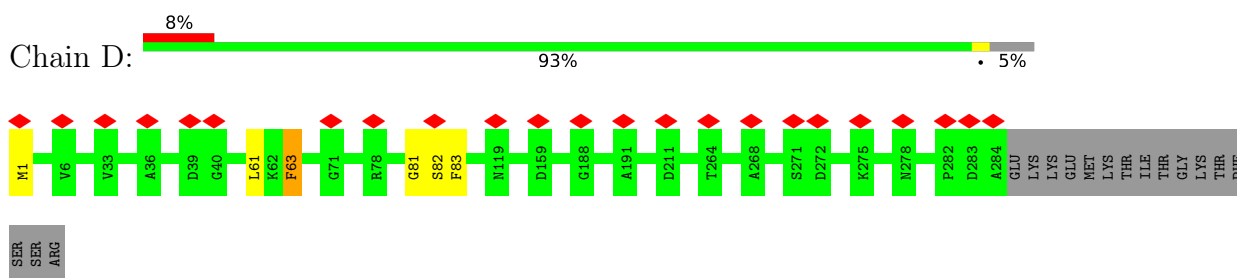
3 Residue-property plots [i](#)

These plots are drawn for all protein, RNA, DNA and oligosaccharide chains in the entry. The first graphic for a chain summarises the proportions of the various outlier classes displayed in the second graphic. The second graphic shows the sequence view annotated by issues in geometry and atom inclusion in map density. Residues are color-coded according to the number of geometric quality criteria for which they contain at least one outlier: green = 0, yellow = 1, orange = 2 and red = 3 or more. A red diamond above a residue indicates a poor fit to the EM map for this residue (all-atom inclusion < 40%). Stretches of 2 or more consecutive residues without any outlier are shown as a green connector. Residues present in the sample, but not in the model, are shown in grey.

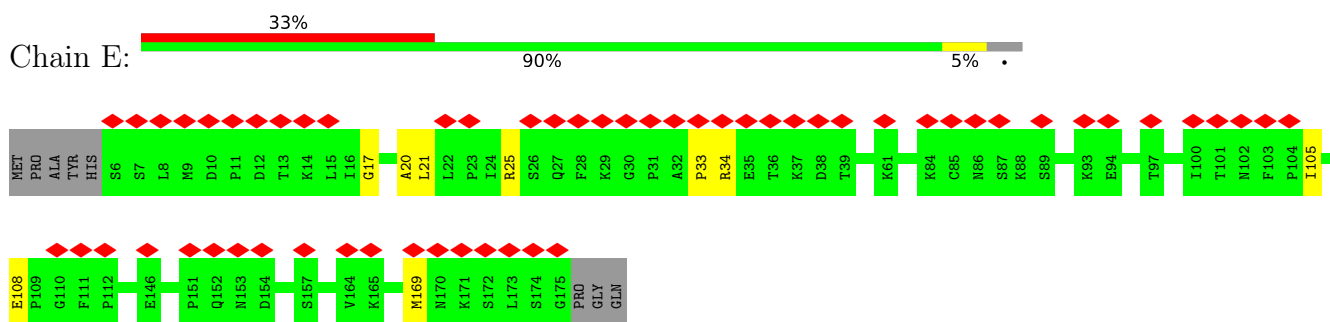
- Molecule 1: Actin-related protein 3



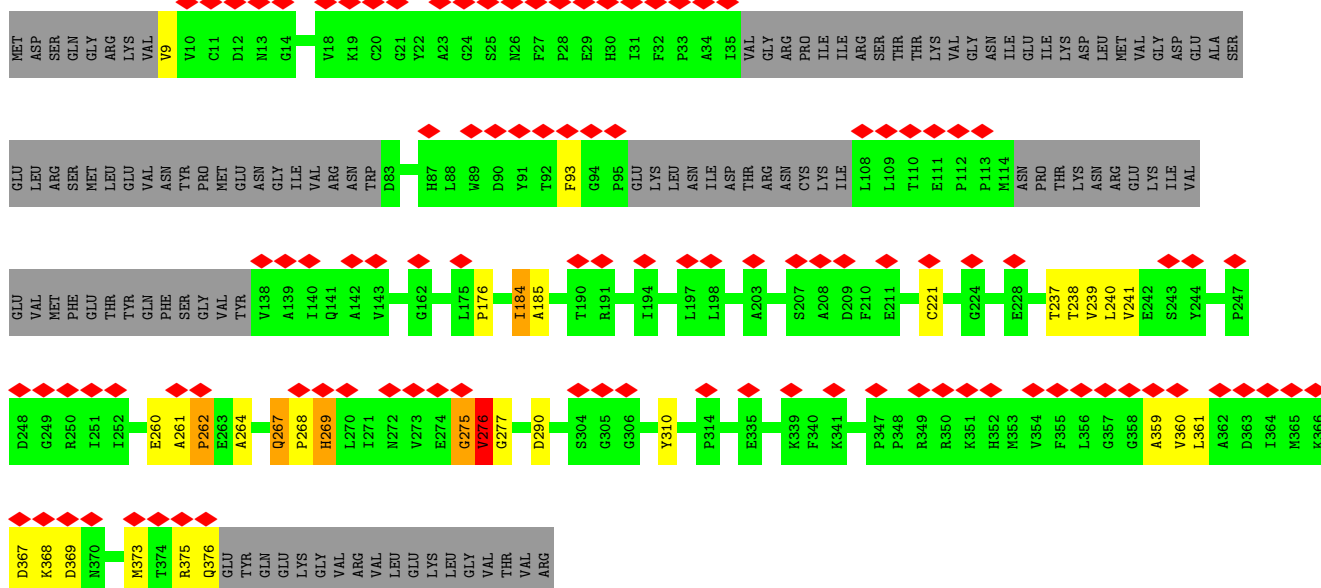
- Molecule 2: Actin-related protein 2/3 complex subunit 2



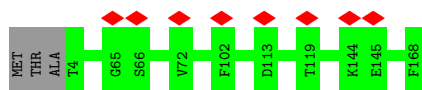
- Molecule 3: Actin-related protein 2/3 complex subunit 3



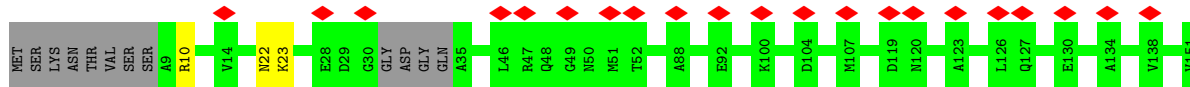
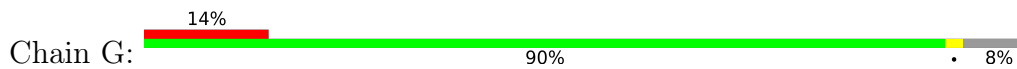
- Molecule 4: Actin-related protein 2



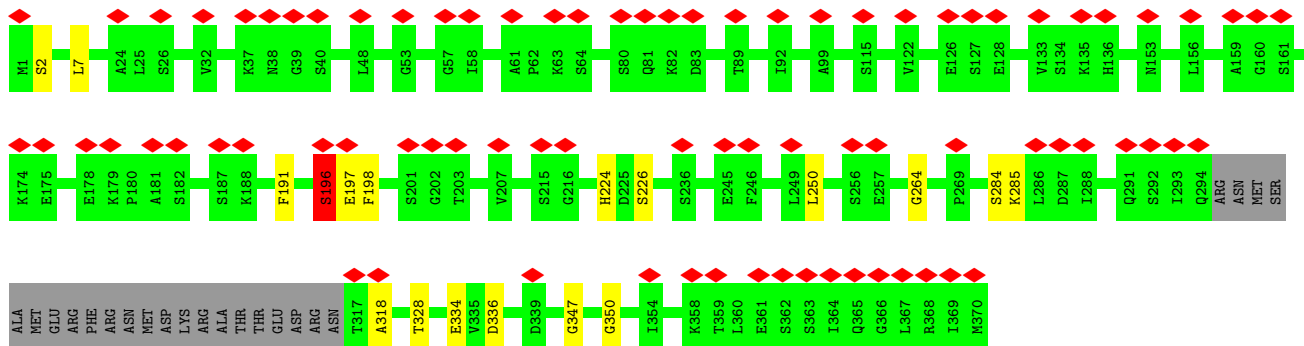
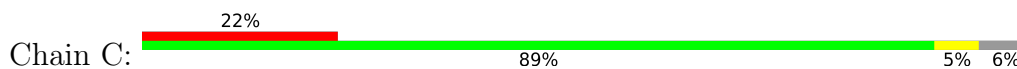
- Molecule 5: Actin-related protein 2/3 complex subunit 4



- Molecule 6: Actin-related protein 2/3 complex subunit 5



- Molecule 7: Actin-related protein 2/3 complex subunit 1A



4 Experimental information

Property	Value	Source
EM reconstruction method	SINGLE PARTICLE	Depositor
Imposed symmetry	POINT, C1	Depositor
Number of particles used	130973	Depositor
Resolution determination method	FSC 0.143 CUT-OFF	Depositor
CTF correction method	PHASE FLIPPING AND AMPLITUDE CORRECTION	Depositor
Microscope	FEI POLARA 300	Depositor
Voltage (kV)	300	Depositor
Electron dose ($e^-/\text{\AA}^2$)	59	Depositor
Minimum defocus (nm)	Not provided	
Maximum defocus (nm)	Not provided	
Magnification	Not provided	
Image detector	GATAN K2 SUMMIT (4k x 4k)	Depositor
Maximum map value	0.077	Depositor
Minimum map value	-0.025	Depositor
Average map value	-0.000	Depositor
Map value standard deviation	0.003	Depositor
Recommended contour level	0.0174	Depositor
Map size (Å)	279.04, 279.04, 279.04	wwPDB
Map dimensions	256, 256, 256	wwPDB
Map angles (°)	90.0, 90.0, 90.0	wwPDB
Pixel spacing (Å)	1.09, 1.09, 1.09	Depositor

5 Model quality i

5.1 Standard geometry i

Bond lengths and bond angles in the following residue types are not validated in this section: ATP

The Z score for a bond length (or angle) is the number of standard deviations the observed value is removed from the expected value. A bond length (or angle) with $|Z| > 5$ is considered an outlier worth inspection. RMSZ is the root-mean-square of all Z scores of the bond lengths (or angles).

Mol	Chain	Bond lengths		Bond angles	
		RMSZ	# Z >5	RMSZ	# Z >5
1	A	1.16	9/1185 (0.8%)	1.67	26/1182 (2.2%)
2	D	0.56	0/851	1.16	8/850 (0.9%)
3	E	0.96	2/508 (0.4%)	1.43	7/506 (1.4%)
4	B	1.27	11/854 (1.3%)	1.87	29/850 (3.4%)
5	F	0.47	0/494	0.69	0/493
6	G	0.36	0/415	0.58	0/413
7	C	1.02	0/1042	1.23	4/1040 (0.4%)
All	All	0.96	22/5349 (0.4%)	1.40	74/5334 (1.4%)

Chiral center outliers are detected by calculating the chiral volume of a chiral center and verifying if the center is modelled as a planar moiety or with the opposite hand. A planarity outlier is detected by checking planarity of atoms in a peptide group, atoms in a mainchain group or atoms of a sidechain that are expected to be planar.

Mol	Chain	#Chirality outliers	#Planarity outliers
1	A	0	9
2	D	0	1
4	B	0	4
7	C	0	1
All	All	0	15

All (22) bond length outliers are listed below:

Mol	Chain	Res	Type	Atoms	Z	Observed(Å)	Ideal(Å)
1	A	83	VAL	C-N	17.25	1.73	1.34
1	A	313	ARG	C-N	8.97	1.51	1.34
4	B	184	ILE	C-N	8.65	1.53	1.34
4	B	310	TYR	C-N	8.59	1.50	1.34
4	B	277	GLY	N-CA	-8.42	1.33	1.46
4	B	237	THR	N-CA	8.32	1.62	1.46
1	A	280	GLU	C-N	-7.88	1.16	1.34

Continued on next page...

Continued from previous page...

Mol	Chain	Res	Type	Atoms	Z	Observed(Å)	Ideal(Å)
4	B	277	GLY	CA-C	-7.76	1.39	1.51
1	A	69	LYS	C-N	-7.19	1.20	1.34
4	B	261	ALA	CA-C	6.99	1.71	1.52
4	B	185	ALA	N-CA	6.84	1.60	1.46
1	A	39	GLU	CA-C	6.81	1.70	1.52
1	A	63	GLY	C-N	-6.52	1.19	1.34
1	A	58	LEU	CA-C	-6.46	1.36	1.52
4	B	241	VAL	N-CA	-6.24	1.33	1.46
3	E	20	ALA	CA-C	-6.16	1.36	1.52
3	E	34	ARG	C-N	-5.98	1.20	1.34
1	A	62	ILE	C-N	5.97	1.43	1.33
1	A	53	LYS	N-CA	-5.44	1.35	1.46
4	B	264	ALA	CA-C	-5.20	1.39	1.52
4	B	269	HIS	N-CA	-5.20	1.35	1.46
4	B	237	THR	C-N	5.01	1.45	1.34

All (74) bond angle outliers are listed below:

Mol	Chain	Res	Type	Atoms	Z	Observed(°)	Ideal(°)
1	A	39	GLU	N-CA-C	-22.59	50.01	111.00
1	A	366	GLN	CA-C-N	-14.47	85.36	117.20
4	B	277	GLY	CA-C-N	-14.33	85.67	117.20
1	A	51	VAL	N-CA-C	12.48	144.69	111.00
2	D	83	PHE	CA-C-N	-12.25	90.25	117.20
4	B	93	PHE	C-N-CA	-11.86	97.39	122.30
4	B	276	VAL	C-N-CA	-11.81	97.51	122.30
4	B	240	LEU	CA-C-N	-11.45	92.00	117.20
3	E	25	ARG	C-N-CA	-11.43	93.12	121.70
1	A	53	LYS	C-N-CA	-10.49	100.27	122.30
1	A	37	ILE	C-N-CA	10.02	146.75	121.70
4	B	275	GLY	C-N-CA	9.61	145.73	121.70
4	B	238	THR	C-N-CA	9.44	145.31	121.70
4	B	237	THR	CA-C-N	9.41	137.90	117.20
2	D	81	GLY	C-N-CA	9.40	145.21	121.70
3	E	20	ALA	N-CA-C	-9.36	85.74	111.00
1	A	38	LYS	C-N-CA	-9.09	98.98	121.70
1	A	63	GLY	CA-C-N	-9.04	97.30	117.20
1	A	71	THR	C-N-CA	8.70	143.45	121.70
4	B	184	ILE	C-N-CA	8.62	143.25	121.70
4	B	359	ALA	C-N-CA	8.56	143.11	121.70
4	B	261	ALA	CA-C-N	8.54	141.01	117.10
4	B	267	GLN	CA-C-N	-8.52	93.23	117.10

Continued on next page...

Continued from previous page...

Mol	Chain	Res	Type	Atoms	Z	Observed(°)	Ideal(°)
4	B	375	ARG	CA-C-N	-8.30	98.93	117.20
3	E	20	ALA	C-N-CA	-8.23	101.13	121.70
4	B	268	PRO	C-N-CA	-8.18	101.25	121.70
4	B	185	ALA	N-CA-C	8.14	132.97	111.00
1	A	59	ASP	C-N-CA	7.96	141.61	121.70
2	D	1	MET	N-CA-C	7.87	132.24	111.00
1	A	58	LEU	N-CA-C	-7.70	90.20	111.00
1	A	366	GLN	C-N-CA	-7.49	102.98	121.70
1	A	70	PRO	C-N-CA	7.41	140.23	121.70
1	A	72	TYR	CA-C-N	-7.20	101.36	117.20
2	D	82	SER	N-CA-C	7.17	130.35	111.00
7	C	196	SER	N-CA-C	-6.96	92.22	111.00
4	B	369	ASP	C-N-CA	6.91	138.99	121.70
1	A	282	PHE	C-N-CA	6.91	138.98	121.70
4	B	260	GLU	C-N-CA	-6.75	104.83	121.70
7	C	334	GLU	C-N-CA	6.74	138.54	121.70
1	A	65	GLU	C-N-CA	6.72	138.50	121.70
2	D	82	SER	CA-C-N	6.60	131.72	117.20
2	D	82	SER	C-N-CA	6.54	138.05	121.70
4	B	264	ALA	N-CA-C	-6.51	93.42	111.00
4	B	376	GLN	N-CA-C	6.46	128.43	111.00
4	B	367	ASP	C-N-CA	6.42	137.75	121.70
1	A	281	ILE	C-N-CA	-6.33	105.88	121.70
1	A	7	ALA	CA-C-N	-6.06	103.87	117.20
4	B	361	LEU	C-N-CA	5.91	136.48	121.70
1	A	405	PRO	N-CA-C	5.85	127.30	112.10
4	B	261	ALA	N-CA-C	5.83	126.73	111.00
4	B	373	MET	CA-C-N	-5.81	104.42	117.20
3	E	33	PRO	N-CA-C	-5.75	97.16	112.10
1	A	68	GLU	C-N-CA	-5.54	107.84	121.70
1	A	69	LYS	CA-C-N	-5.53	101.61	117.10
3	E	34	ARG	N-CA-C	5.51	125.88	111.00
1	A	53	LYS	CA-C-N	5.49	127.17	116.20
1	A	60	PHE	CA-C-N	5.48	129.26	117.20
4	B	262	PRO	N-CA-C	5.48	126.35	112.10
3	E	21	LEU	C-N-CA	5.47	135.37	121.70
7	C	284	SER	C-N-CA	5.46	135.36	121.70
4	B	9	VAL	N-CA-C	-5.45	96.29	111.00
1	A	85	ASP	C-N-CA	-5.40	108.20	121.70
4	B	361	LEU	CA-C-N	-5.39	105.33	117.20
4	B	368	LYS	CA-C-N	-5.39	105.34	117.20
2	D	61	LEU	C-N-CA	5.30	134.96	121.70

Continued on next page...

Continued from previous page...

Mol	Chain	Res	Type	Atoms	Z	Observed(°)	Ideal(°)
1	A	3	GLY	N-CA-C	5.29	126.33	113.10
4	B	221	CYS	N-CA-C	5.21	125.08	111.00
1	A	62	ILE	CA-C-N	5.18	126.57	116.20
4	B	360	VAL	C-N-CA	-5.16	108.79	121.70
1	A	84	GLU	C-N-CA	5.16	134.61	121.70
2	D	63	PHE	CA-C-N	-5.15	105.87	117.20
4	B	239	VAL	C-N-CA	5.14	134.56	121.70
3	E	17	GLY	C-N-CA	-5.05	109.08	121.70
7	C	197	GLU	N-CA-C	-5.03	97.42	111.00

There are no chirality outliers.

All (15) planarity outliers are listed below:

Mol	Chain	Res	Type	Group
1	A	194	PRO	Peptide
1	A	287	PHE	Peptide
1	A	38	LYS	Peptide
1	A	53	LYS	Peptide
1	A	57	ASP	Peptide
1	A	59	ASP	Peptide
1	A	60	PHE	Peptide
1	A	70	PRO	Peptide
1	A	72	TYR	Peptide
4	B	184	ILE	Peptide
4	B	262	PRO	Peptide
4	B	275	GLY	Peptide
4	B	276	VAL	Peptide
7	C	196	SER	Peptide
2	D	63	PHE	Peptide

5.2 Too-close contacts

In the following table, the Non-H and H(model) columns list the number of non-hydrogen atoms and hydrogen atoms in the chain respectively. The H(added) column lists the number of hydrogen atoms added and optimized by MolProbity. The Clashes column lists the number of clashes within the asymmetric unit, whereas Symm-Clashes lists symmetry-related clashes.

Mol	Chain	Non-H	H(model)	H(added)	Clashes	Symm-Clashes
1	A	1188	0	418	1	0
2	D	852	0	303	0	0
3	E	510	0	173	4	0

Continued on next page...

Continued from previous page...

Mol	Chain	Non-H	H(model)	H(added)	Clashes	Symm-Clashes
4	B	858	0	316	1	0
5	F	495	0	164	0	0
6	G	417	0	153	0	0
7	C	1044	0	380	6	0
8	A	31	0	12	0	0
8	B	31	0	12	0	0
All	All	5426	0	1931	12	0

The all-atom clashscore is defined as the number of clashes found per 1000 atoms (including hydrogen atoms). The all-atom clashscore for this structure is 2.

All (12) close contacts within the same asymmetric unit are listed below, sorted by their clash magnitude.

Atom-1	Atom-2	Interatomic distance (Å)	Clash overlap (Å)
1:A:83:VAL:C	1:A:84:GLU:N	1.73	1.41
3:E:105:ILE:C	3:E:108:GLU:CA	2.29	1.00
7:C:7:LEU:H	7:C:350:GLY:HA2	1.37	0.87
7:C:7:LEU:H	7:C:350:GLY:CA	1.95	0.80
7:C:250:LEU:H	7:C:264:GLY:HA3	1.57	0.70
7:C:328:THR:H	7:C:347:GLY:HA2	1.61	0.66
3:E:105:ILE:C	3:E:108:GLU:N	2.56	0.58
3:E:105:ILE:C	3:E:108:GLU:C	2.65	0.54
3:E:105:ILE:C	3:E:108:GLU:H	2.15	0.50
7:C:196:SER:H	7:C:198:PHE:N	2.09	0.50
7:C:224:HIS:C	7:C:226:SER:H	2.18	0.46
4:B:267:GLN:C	4:B:269:HIS:H	2.23	0.41

There are no symmetry-related clashes.

5.3 Torsion angles [i](#)

5.3.1 Protein backbone [i](#)

In the following table, the Percentiles column shows the percent Ramachandran outliers of the chain as a percentile score with respect to all PDB entries followed by that with respect to all EM entries.

The Analysed column shows the number of residues for which the backbone conformation was analysed, and the total number of residues.

Mol	Chain	Analysed	Favoured	Allowed	Outliers	Percentiles	
1	A	390/418 (93%)	372 (95%)	16 (4%)	2 (0%)	29	68
2	D	282/300 (94%)	278 (99%)	4 (1%)	0	100	100
3	E	166/178 (93%)	161 (97%)	4 (2%)	1 (1%)	25	65
4	B	278/394 (71%)	245 (88%)	30 (11%)	3 (1%)	14	52
5	F	163/168 (97%)	158 (97%)	5 (3%)	0	100	100
6	G	135/151 (89%)	130 (96%)	2 (2%)	3 (2%)	6	38
7	C	344/370 (93%)	320 (93%)	18 (5%)	6 (2%)	9	43
All	All	1758/1979 (89%)	1664 (95%)	79 (4%)	15 (1%)	21	56

All (15) Ramachandran outliers are listed below:

Mol	Chain	Res	Type
4	B	290	ASP
6	G	10	ARG
6	G	22	ASN
7	C	191	PHE
7	C	196	SER
7	C	2	SER
7	C	285	LYS
7	C	336	ASP
3	E	169	MET
7	C	318	ALA
1	A	313	ARG
1	A	325	SER
4	B	276	VAL
6	G	23	LYS
4	B	176	PRO

5.3.2 Protein sidechains [i](#)

There are no protein residues with a non-rotameric sidechain to report in this entry.

5.3.3 RNA [i](#)

There are no RNA molecules in this entry.

5.4 Non-standard residues in protein, DNA, RNA chains [i](#)

There are no non-standard protein/DNA/RNA residues in this entry.

5.5 Carbohydrates [i](#)

There are no monosaccharides in this entry.

5.6 Ligand geometry [i](#)

2 ligands are modelled in this entry.

In the following table, the Counts columns list the number of bonds (or angles) for which Mogul statistics could be retrieved, the number of bonds (or angles) that are observed in the model and the number of bonds (or angles) that are defined in the Chemical Component Dictionary. The Link column lists molecule types, if any, to which the group is linked. The Z score for a bond length (or angle) is the number of standard deviations the observed value is removed from the expected value. A bond length (or angle) with $|Z| > 2$ is considered an outlier worth inspection. RMSZ is the root-mean-square of all Z scores of the bond lengths (or angles).

Mol	Type	Chain	Res	Link	Bond lengths			Bond angles		
					Counts	RMSZ	# Z > 2	Counts	RMSZ	# Z > 2
8	ATP	A	501	-	26,33,33	0.90	1 (3%)	31,52,52	1.67	6 (19%)
8	ATP	B	401	-	26,33,33	0.92	1 (3%)	31,52,52	1.43	4 (12%)

In the following table, the Chirals column lists the number of chiral outliers, the number of chiral centers analysed, the number of these observed in the model and the number defined in the Chemical Component Dictionary. Similar counts are reported in the Torsion and Rings columns. '-' means no outliers of that kind were identified.

Mol	Type	Chain	Res	Link	Chirals	Torsions	Rings
8	ATP	A	501	-	-	2/18/38/38	0/3/3/3
8	ATP	B	401	-	-	7/18/38/38	0/3/3/3

All (2) bond length outliers are listed below:

Mol	Chain	Res	Type	Atoms	Z	Observed(Å)	Ideal(Å)
8	B	401	ATP	C5-C4	2.37	1.47	1.40
8	A	501	ATP	C5-C4	2.31	1.47	1.40

All (10) bond angle outliers are listed below:

Mol	Chain	Res	Type	Atoms	Z	Observed(°)	Ideal(°)
8	A	501	ATP	PA-O3A-PB	-3.89	119.47	132.83
8	A	501	ATP	C1'-N9-C4	-3.74	120.07	126.64
8	B	401	ATP	PA-O3A-PB	-3.60	120.47	132.83
8	A	501	ATP	C4-C5-N7	-3.25	106.01	109.40

Continued on next page...

Continued from previous page...

Mol	Chain	Res	Type	Atoms	Z	Observed(°)	Ideal(°)
8	A	501	ATP	N3-C2-N1	-3.23	123.63	128.68
8	B	401	ATP	N3-C2-N1	-3.14	123.78	128.68
8	A	501	ATP	C3'-C2'-C1'	3.08	105.61	100.98
8	B	401	ATP	C3'-C2'-C1'	3.05	105.58	100.98
8	B	401	ATP	C4-C5-N7	-2.75	106.53	109.40
8	A	501	ATP	PB-O3B-PG	-2.61	123.88	132.83

There are no chirality outliers.

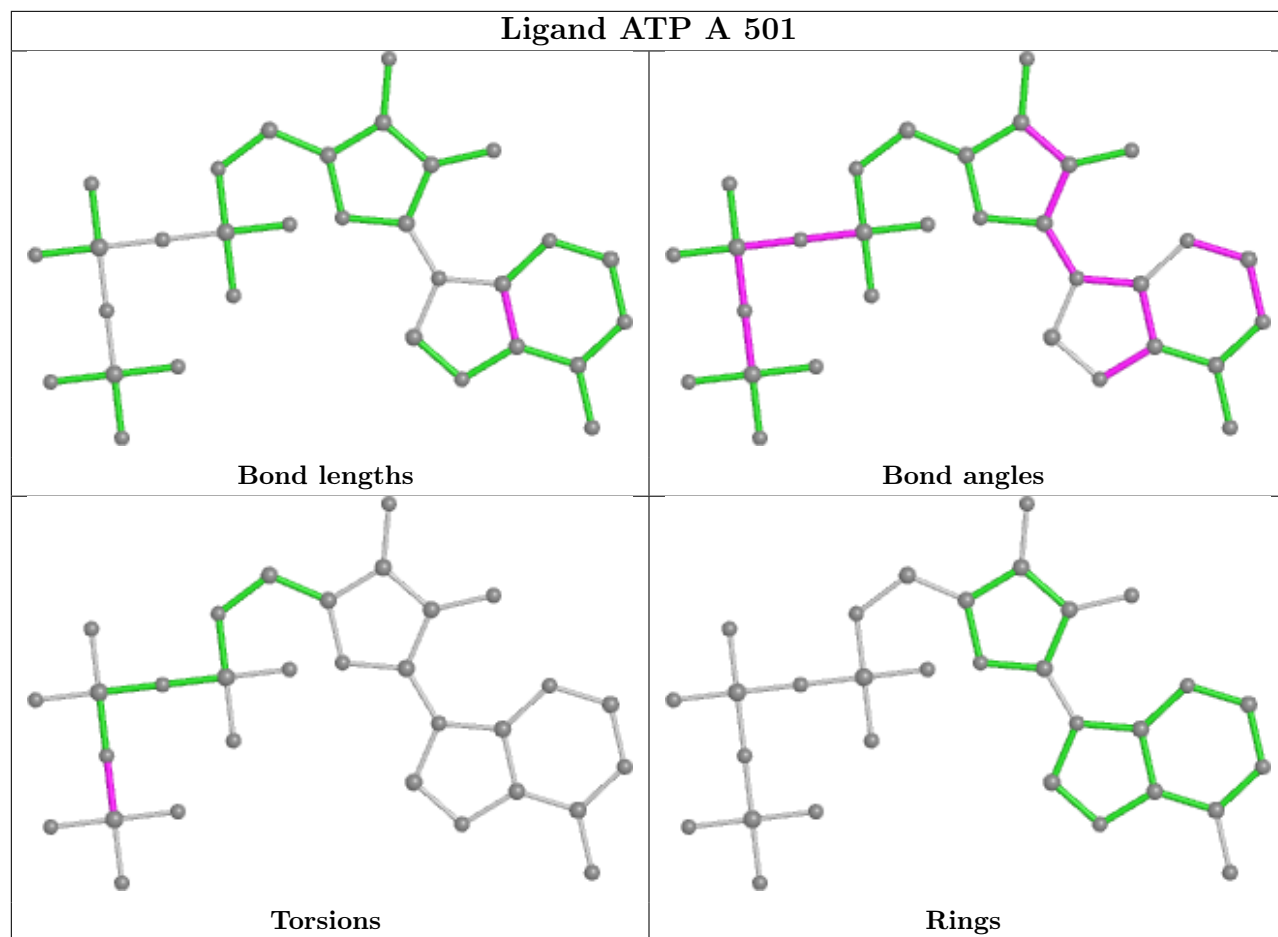
All (9) torsion outliers are listed below:

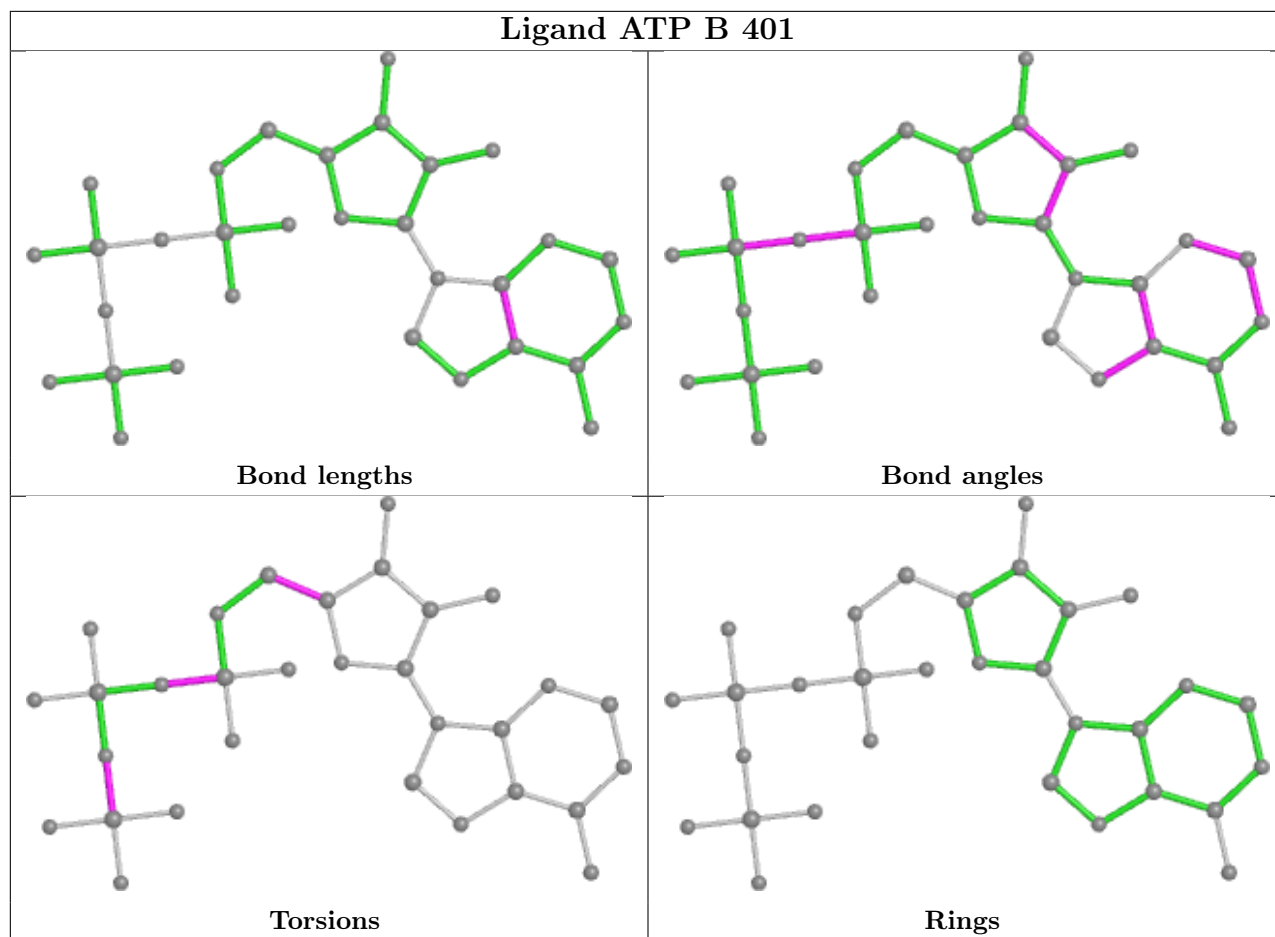
Mol	Chain	Res	Type	Atoms
8	B	401	ATP	PB-O3B-PG-O2G
8	B	401	ATP	C3'-C4'-C5'-O5'
8	B	401	ATP	O4'-C4'-C5'-O5'
8	B	401	ATP	PB-O3A-PA-O2A
8	A	501	ATP	PB-O3B-PG-O3G
8	B	401	ATP	PB-O3B-PG-O3G
8	B	401	ATP	PB-O3A-PA-O1A
8	A	501	ATP	PB-O3B-PG-O1G
8	B	401	ATP	PB-O3B-PG-O1G

There are no ring outliers.

No monomer is involved in short contacts.

The following is a two-dimensional graphical depiction of Mogul quality analysis of bond lengths, bond angles, torsion angles, and ring geometry for all instances of the Ligand of Interest. In addition, ligands with molecular weight > 250 and outliers as shown on the validation Tables will also be included. For torsion angles, if less than 5% of the Mogul distribution of torsion angles is within 10 degrees of the torsion angle in question, then that torsion angle is considered an outlier. Any bond that is central to one or more torsion angles identified as an outlier by Mogul will be highlighted in the graph. For rings, the root-mean-square deviation (RMSD) between the ring in question and similar rings identified by Mogul is calculated over all ring torsion angles. If the average RMSD is greater than 60 degrees and the minimal RMSD between the ring in question and any Mogul-identified rings is also greater than 60 degrees, then that ring is considered an outlier. The outliers are highlighted in purple. The color gray indicates Mogul did not find sufficient equivalents in the CSD to analyse the geometry.





5.7 Other polymers [i](#)

There are no such residues in this entry.

5.8 Polymer linkage issues [i](#)

The following chains have linkage breaks:

Mol	Chain	Number of breaks
1	A	3
3	E	2

All chain breaks are listed below:

Model	Chain	Residue-1	Atom-1	Residue-2	Atom-2	Distance (Å)
1	E	105:ILE	C	106:PRO	N	4.37
1	A	83:VAL	C	84:GLU	N	1.73
1	E	34:ARG	C	35:GLU	N	1.20
1	A	63:GLY	C	64:ASP	N	1.19

Continued on next page...

Continued from previous page...

Model	Chain	Residue-1	Atom-1	Residue-2	Atom-2	Distance (Å)
1	A	280:GLU	C	281:ILE	N	1.15

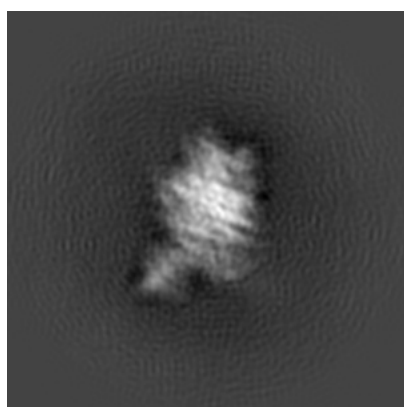
6 Map visualisation [i](#)

This section contains visualisations of the EMDB entry EMD-10960. These allow visual inspection of the internal detail of the map and identification of artifacts.

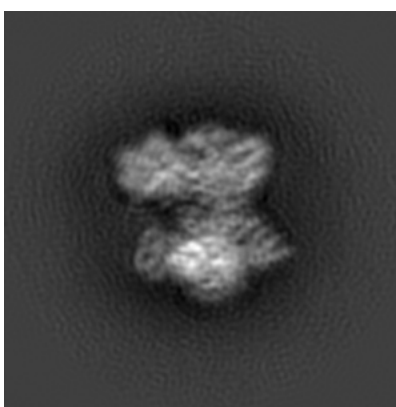
No raw map or half-maps were deposited for this entry and therefore no images, graphs, etc. pertaining to the raw map can be shown.

6.1 Orthogonal projections [i](#)

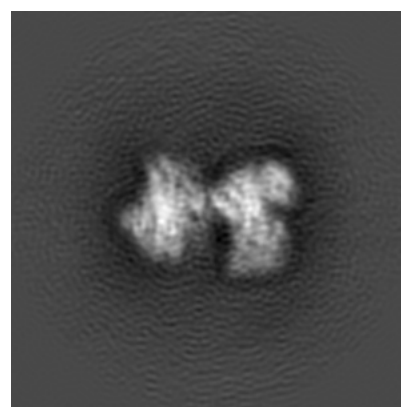
6.1.1 Primary map



X



Y

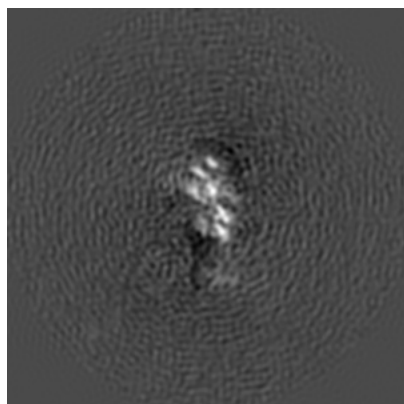


Z

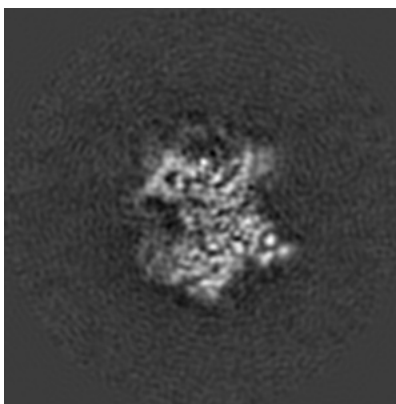
The images above show the map projected in three orthogonal directions.

6.2 Central slices [i](#)

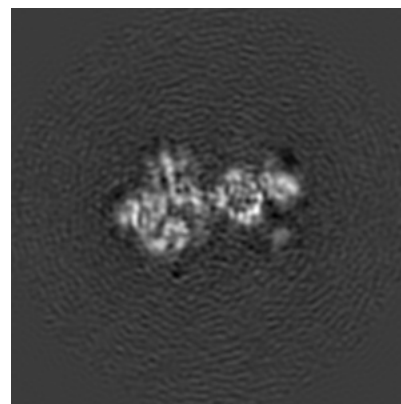
6.2.1 Primary map



X Index: 128



Y Index: 128

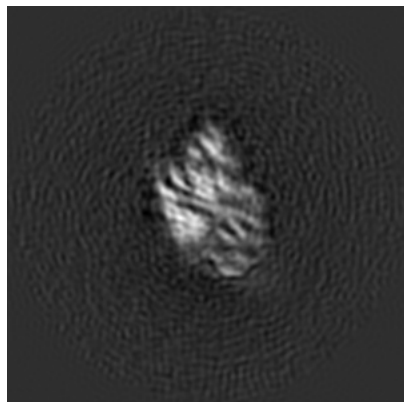


Z Index: 128

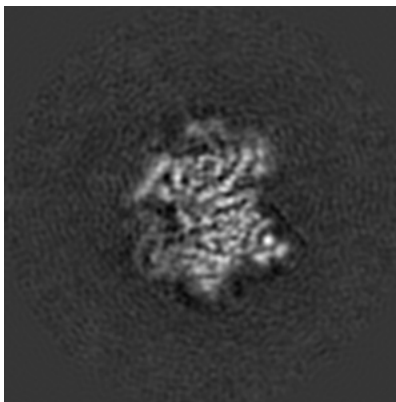
The images above show central slices of the map in three orthogonal directions.

6.3 Largest variance slices [i](#)

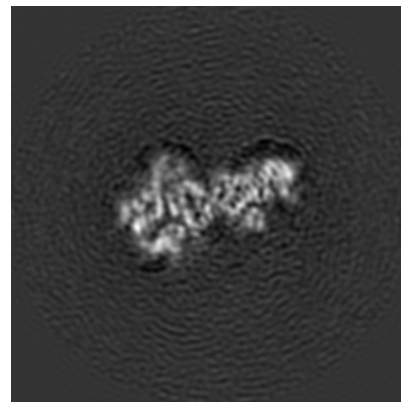
6.3.1 Primary map



X Index: 95



Y Index: 131

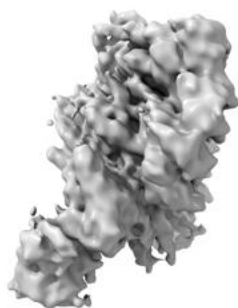


Z Index: 135

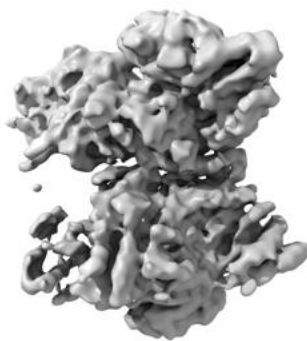
The images above show the largest variance slices of the map in three orthogonal directions.

6.4 Orthogonal surface views [i](#)

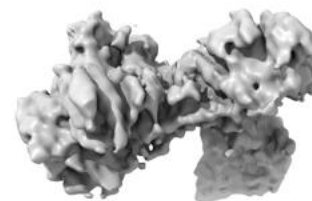
6.4.1 Primary map



X



Y



Z

The images above show the 3D surface view of the map at the recommended contour level 0.0174. These images, in conjunction with the slice images, may facilitate assessment of whether an appropriate contour level has been provided.

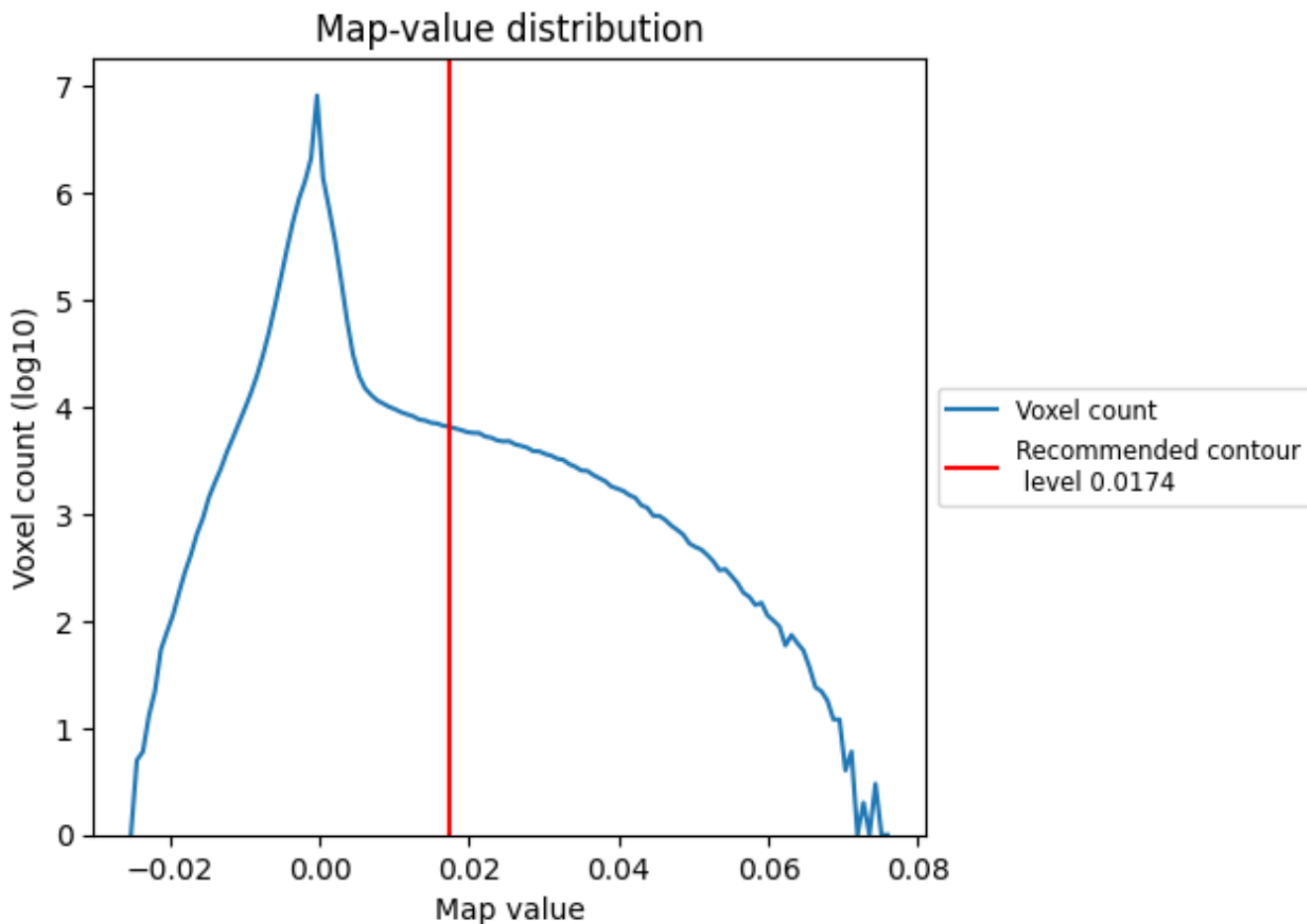
6.5 Mask visualisation

This section was not generated. No masks/segmentation were deposited.

7 Map analysis [i](#)

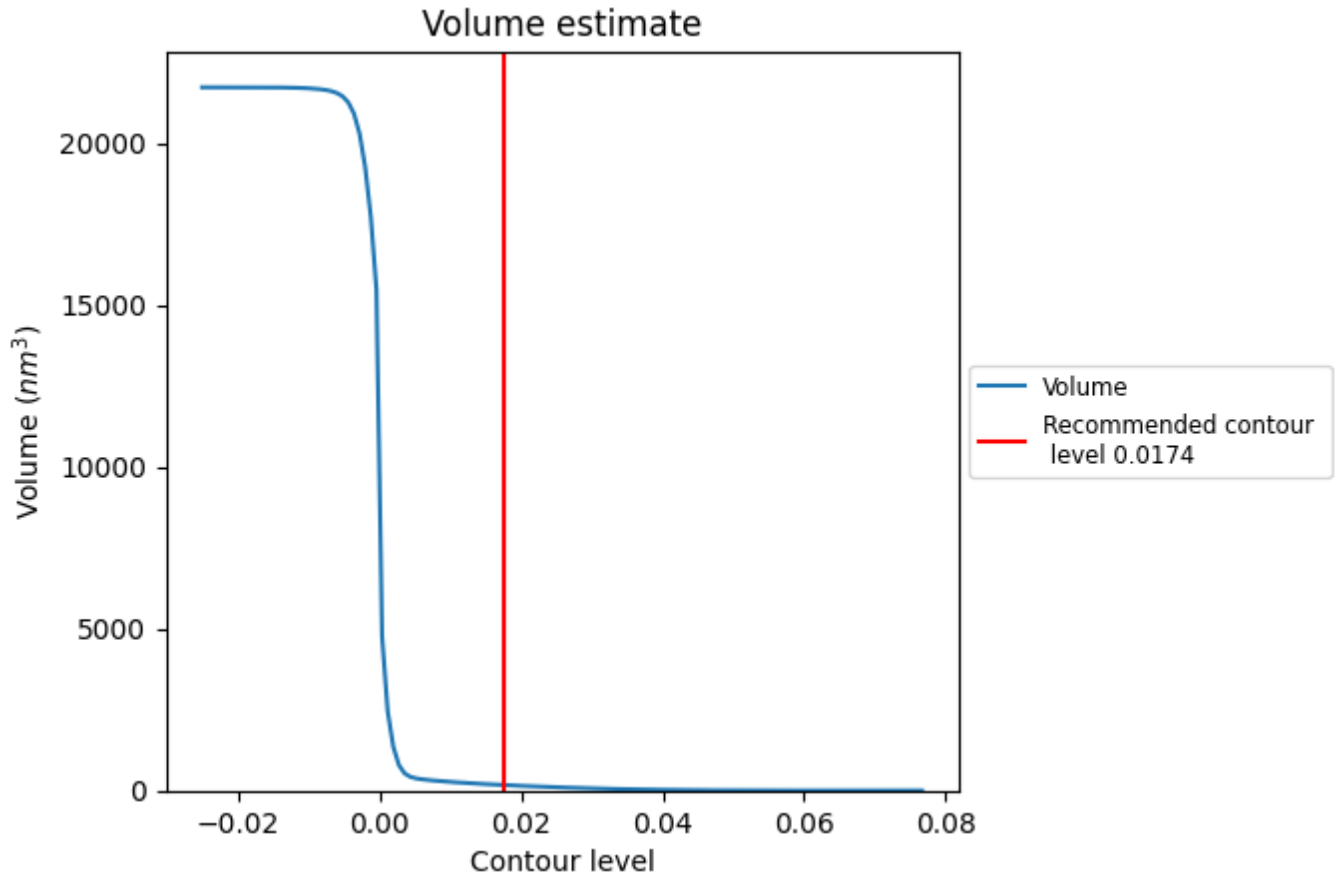
This section contains the results of statistical analysis of the map.

7.1 Map-value distribution [i](#)



The map-value distribution is plotted in 128 intervals along the x-axis. The y-axis is logarithmic. A spike in this graph at zero usually indicates that the volume has been masked.

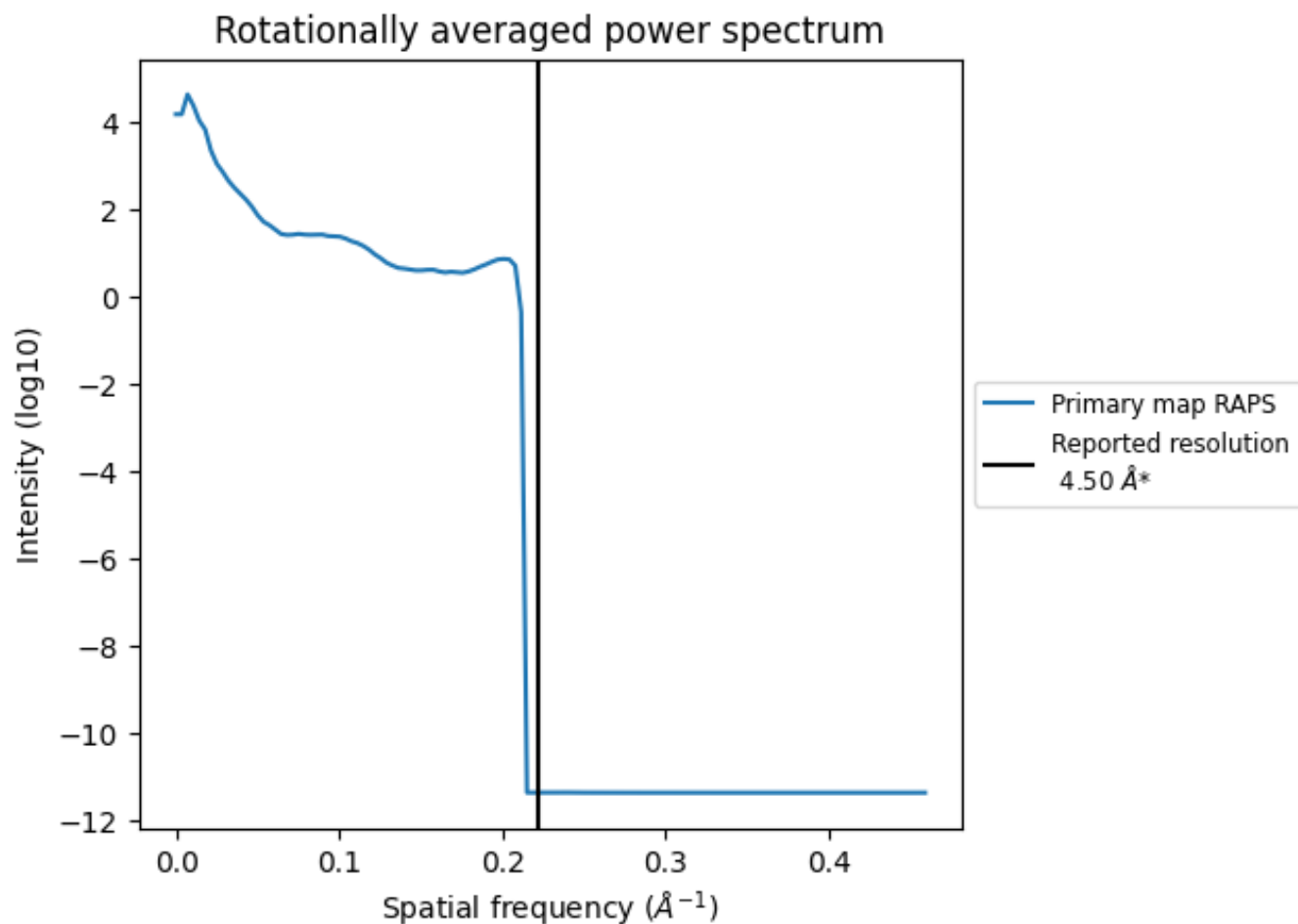
7.2 Volume estimate [i](#)



The volume at the recommended contour level is 172 nm³; this corresponds to an approximate mass of 155 kDa.

The volume estimate graph shows how the enclosed volume varies with the contour level. The recommended contour level is shown as a vertical line and the intersection between the line and the curve gives the volume of the enclosed surface at the given level.

7.3 Rotationally averaged power spectrum [\(i\)](#)



*Reported resolution corresponds to spatial frequency of 0.222 Å⁻¹

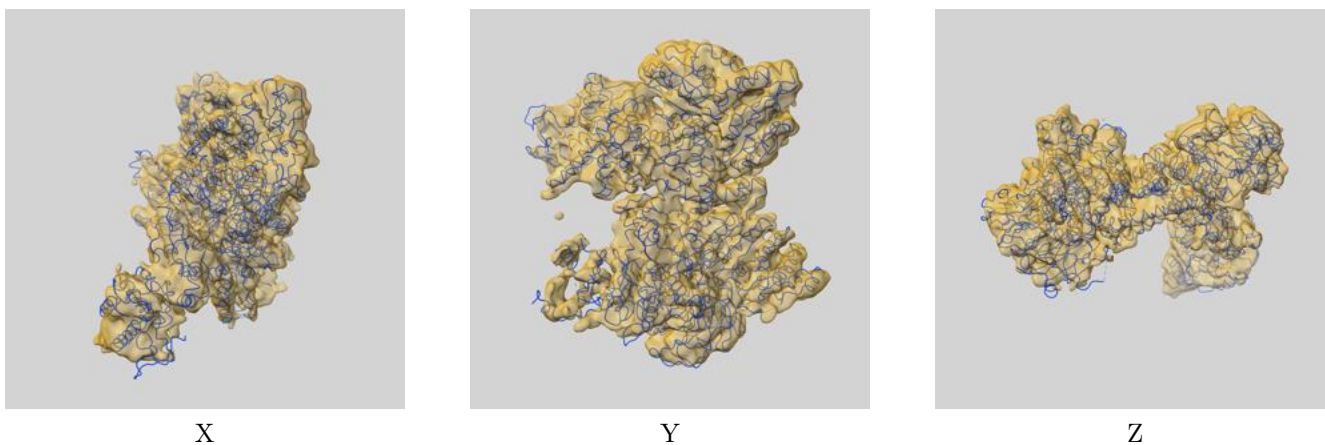
8 Fourier-Shell correlation

This section was not generated. No FSC curve or half-maps provided.

9 Map-model fit [i](#)

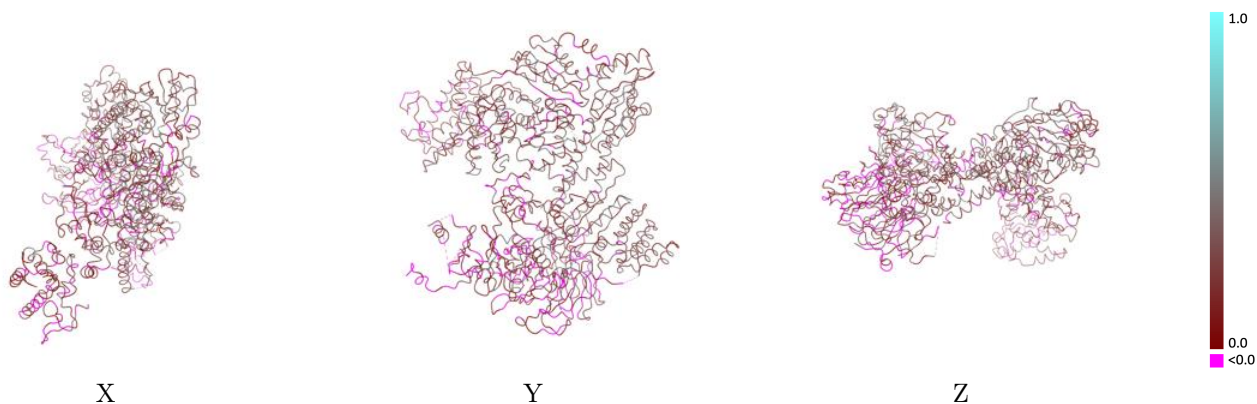
This section contains information regarding the fit between EMDB map EMD-10960 and PDB model 6YW7. Per-residue inclusion information can be found in section [3](#) on page [5](#).

9.1 Map-model overlay [i](#)



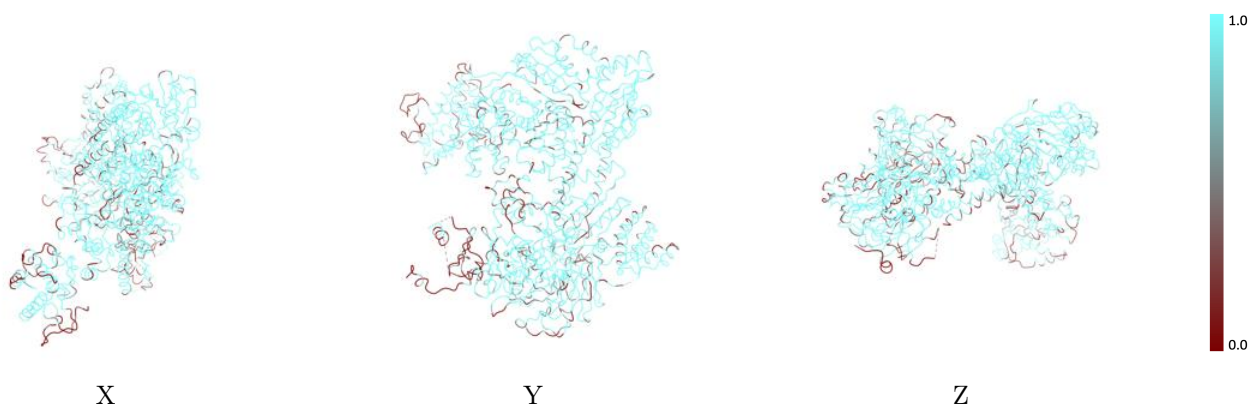
The images above show the 3D surface view of the map at the recommended contour level 0.0174 at 50% transparency in yellow overlaid with a ribbon representation of the model coloured in blue. These images allow for the visual assessment of the quality of fit between the atomic model and the map.

9.2 Q-score mapped to coordinate model [i](#)



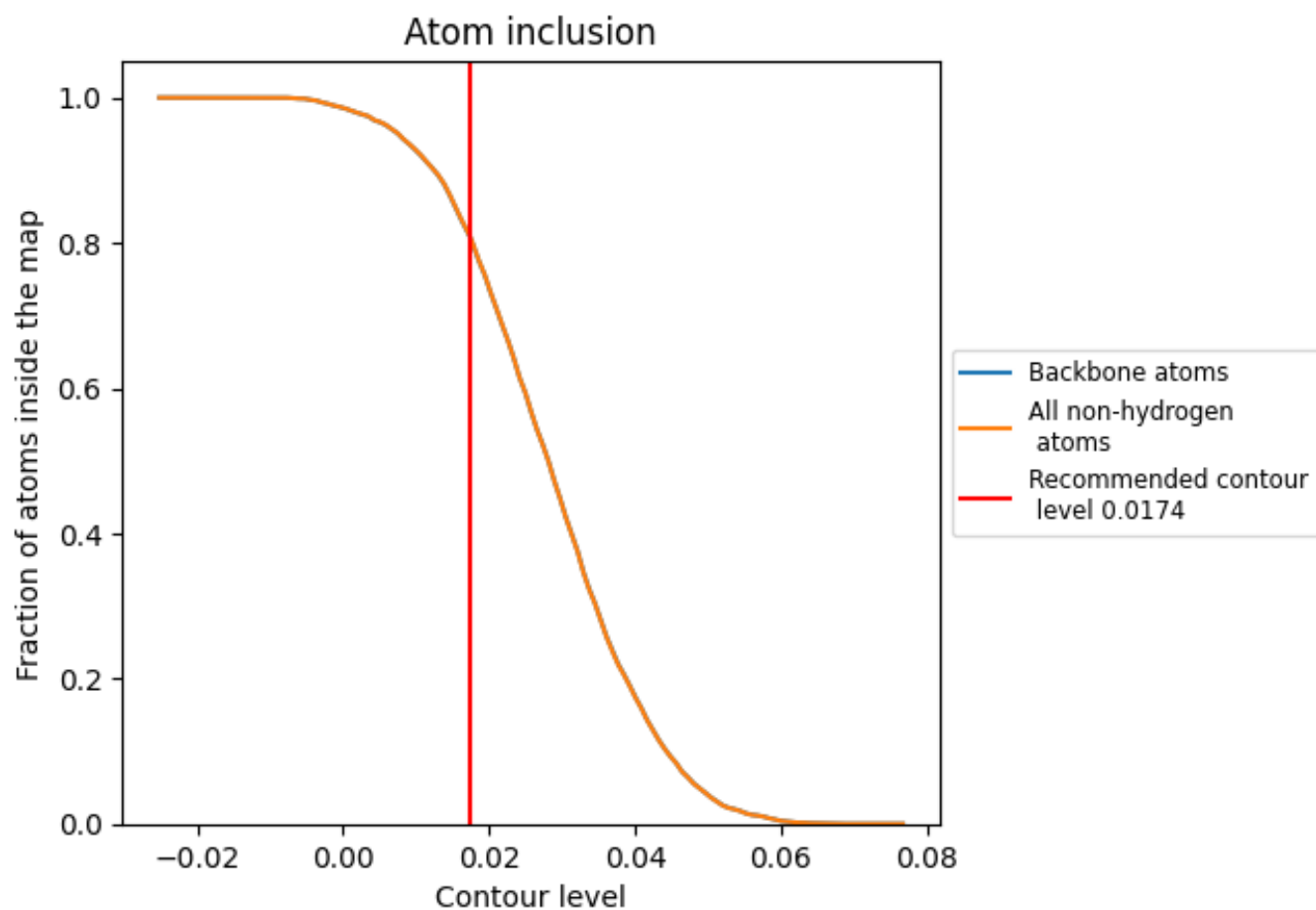
The images above show the model with each residue coloured according to its Q-score. This shows their resolvability in the map with higher Q-score values reflecting better resolvability. Please note: Q-score is calculating the resolvability of atoms, and thus high values are only expected at resolutions at which atoms can be resolved. Low Q-score values may therefore be expected for many entries.

9.3 Atom inclusion mapped to coordinate model [i](#)



The images above show the model with each residue coloured according to its atom inclusion. This shows to what extent they are inside the map at the recommended contour level (0.0174).

















9.4 Atom inclusion [i](#)



At the recommended contour level, 81% of all backbone atoms, 81% of all non-hydrogen atoms, are inside the map.

9.5 Map-model fit summary [i](#)

The table lists the average atom inclusion at the recommended contour level (0.0174) and Q-score for the entire model and for each chain.

Chain	Atom inclusion	Q-score
All	 0.8089	 0.1940
A	 0.8819	 0.2390
B	 0.6389	 0.1590
C	 0.7653	 0.0670
D	 0.9202	 0.2640
E	 0.6588	 0.1330
F	 0.9414	 0.2880
G	 0.8657	 0.2700

