



Full wwPDB X-ray Structure Validation Report ⓘ

Sep 6, 2023 – 12:09 pm BST

PDB ID : 6RX0
Title : Trypanosoma brucei PTR1 (TbPTR1) in complex with inhibitor 3 (NMT-C0013)
Authors : Landi, G.; Pozzi, C.; Mangani, S.
Deposited on : 2019-06-07
Resolution : 1.20 Å(reported)

This is a Full wwPDB X-ray Structure Validation Report for a publicly released PDB entry.

We welcome your comments at validation@mail.wwpdb.org

A user guide is available at

<https://www.wwpdb.org/validation/2017/XrayValidationReportHelp>

with specific help available everywhere you see the ⓘ symbol.

The types of validation reports are described at

<http://www.wwpdb.org/validation/2017/FAQs#types>.

The following versions of software and data (see [references ⓘ](#)) were used in the production of this report:

MolProbity : 4.02b-467
Mogul : 1.8.4, CSD as541be (2020)
Xtriage (Phenix) : 1.13
EDS : 2.35
buster-report : 1.1.7 (2018)
Percentile statistics : 20191225.v01 (using entries in the PDB archive December 25th 2019)
Refmac : 5.8.0158
CCP4 : 7.0.044 (Gargrove)
Ideal geometry (proteins) : Engh & Huber (2001)
Ideal geometry (DNA, RNA) : Parkinson et al. (1996)
Validation Pipeline (wwPDB-VP) : 2.35

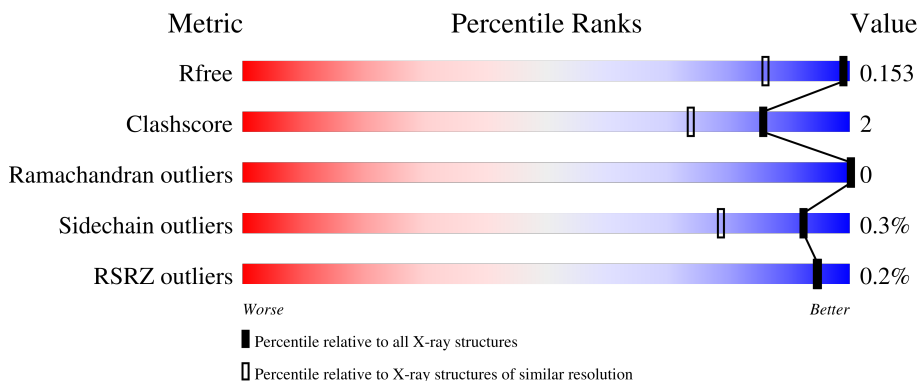
1 Overall quality at a glance

The following experimental techniques were used to determine the structure:

X-RAY DIFFRACTION

The reported resolution of this entry is 1.20 Å.

Percentile scores (ranging between 0-100) for global validation metrics of the entry are shown in the following graphic. The table shows the number of entries on which the scores are based.



Metric	Whole archive (#Entries)	Similar resolution (#Entries, resolution range(Å))
R_{free}	130704	1223 (1.22-1.18)
Clashscore	141614	1286 (1.22-1.18)
Ramachandran outliers	138981	1240 (1.22-1.18)
Sidechain outliers	138945	1239 (1.22-1.18)
RSRZ outliers	127900	1200 (1.22-1.18)

The table below summarises the geometric issues observed across the polymeric chains and their fit to the electron density. The red, orange, yellow and green segments of the lower bar indicate the fraction of residues that contain outliers for ≥ 3 , 2, 1 and 0 types of geometric quality criteria respectively. A grey segment represents the fraction of residues that are not modelled. The numeric value for each fraction is indicated below the corresponding segment, with a dot representing fractions $\leq 5\%$. The upper red bar (where present) indicates the fraction of residues that have poor fit to the electron density. The numeric value is given above the bar.

Mol	Chain	Length	Quality of chain
1	A	288	 81% 5% 14%
1	B	288	 % 82% . 14%
1	C	288	 76% . 20%
1	D	288	 80% 5% 14%

2 Entry composition [i](#)

There are 6 unique types of molecules in this entry. The entry contains 8783 atoms, of which 0 are hydrogens and 0 are deuteriums.

In the tables below, the ZeroOcc column contains the number of atoms modelled with zero occupancy, the AltConf column contains the number of residues with at least one atom in alternate conformation and the Trace column contains the number of residues modelled with at most 2 atoms.

- Molecule 1 is a protein called Pteridine reductase.

Mol	Chain	Residues	Atoms					ZeroOcc	AltConf	Trace
			Total	C	N	O	S			
1	A	248	1901	1200	334	355	12	0	10	0
1	B	247	1905	1205	329	359	12	0	15	0
1	C	231	1726	1090	296	329	11	0	9	0
1	D	247	1862	1183	319	348	12	0	11	0

There are 80 discrepancies between the modelled and reference sequences:

Chain	Residue	Modelled	Actual	Comment	Reference
A	-19	MET	-	initiating methionine	UNP O76290
A	-18	GLY	-	expression tag	UNP O76290
A	-17	SER	-	expression tag	UNP O76290
A	-16	SER	-	expression tag	UNP O76290
A	-15	HIS	-	expression tag	UNP O76290
A	-14	HIS	-	expression tag	UNP O76290
A	-13	HIS	-	expression tag	UNP O76290
A	-12	HIS	-	expression tag	UNP O76290
A	-11	HIS	-	expression tag	UNP O76290
A	-10	HIS	-	expression tag	UNP O76290
A	-9	SER	-	expression tag	UNP O76290
A	-8	SER	-	expression tag	UNP O76290
A	-7	GLY	-	expression tag	UNP O76290
A	-6	LEU	-	expression tag	UNP O76290
A	-5	VAL	-	expression tag	UNP O76290
A	-4	PRO	-	expression tag	UNP O76290
A	-3	ARG	-	expression tag	UNP O76290
A	-2	GLY	-	expression tag	UNP O76290
A	-1	SER	-	expression tag	UNP O76290
A	0	HIS	-	expression tag	UNP O76290
B	-19	MET	-	initiating methionine	UNP O76290

Continued on next page...

Continued from previous page...

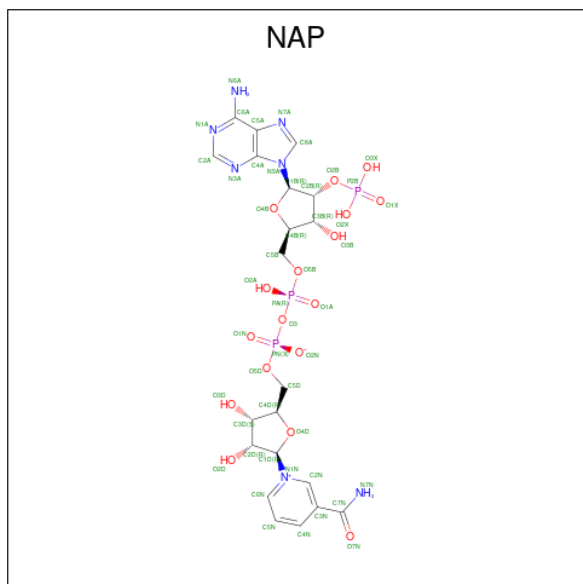
Chain	Residue	Modelled	Actual	Comment	Reference
B	-18	GLY	-	expression tag	UNP O76290
B	-17	SER	-	expression tag	UNP O76290
B	-16	SER	-	expression tag	UNP O76290
B	-15	HIS	-	expression tag	UNP O76290
B	-14	HIS	-	expression tag	UNP O76290
B	-13	HIS	-	expression tag	UNP O76290
B	-12	HIS	-	expression tag	UNP O76290
B	-11	HIS	-	expression tag	UNP O76290
B	-10	HIS	-	expression tag	UNP O76290
B	-9	SER	-	expression tag	UNP O76290
B	-8	SER	-	expression tag	UNP O76290
B	-7	GLY	-	expression tag	UNP O76290
B	-6	LEU	-	expression tag	UNP O76290
B	-5	VAL	-	expression tag	UNP O76290
B	-4	PRO	-	expression tag	UNP O76290
B	-3	ARG	-	expression tag	UNP O76290
B	-2	GLY	-	expression tag	UNP O76290
B	-1	SER	-	expression tag	UNP O76290
B	0	HIS	-	expression tag	UNP O76290
C	-19	MET	-	initiating methionine	UNP O76290
C	-18	GLY	-	expression tag	UNP O76290
C	-17	SER	-	expression tag	UNP O76290
C	-16	SER	-	expression tag	UNP O76290
C	-15	HIS	-	expression tag	UNP O76290
C	-14	HIS	-	expression tag	UNP O76290
C	-13	HIS	-	expression tag	UNP O76290
C	-12	HIS	-	expression tag	UNP O76290
C	-11	HIS	-	expression tag	UNP O76290
C	-10	HIS	-	expression tag	UNP O76290
C	-9	SER	-	expression tag	UNP O76290
C	-8	SER	-	expression tag	UNP O76290
C	-7	GLY	-	expression tag	UNP O76290
C	-6	LEU	-	expression tag	UNP O76290
C	-5	VAL	-	expression tag	UNP O76290
C	-4	PRO	-	expression tag	UNP O76290
C	-3	ARG	-	expression tag	UNP O76290
C	-2	GLY	-	expression tag	UNP O76290
C	-1	SER	-	expression tag	UNP O76290
C	0	HIS	-	expression tag	UNP O76290
D	-19	MET	-	initiating methionine	UNP O76290
D	-18	GLY	-	expression tag	UNP O76290
D	-17	SER	-	expression tag	UNP O76290

Continued on next page...

Continued from previous page...

Chain	Residue	Modelled	Actual	Comment	Reference
D	-16	SER	-	expression tag	UNP O76290
D	-15	HIS	-	expression tag	UNP O76290
D	-14	HIS	-	expression tag	UNP O76290
D	-13	HIS	-	expression tag	UNP O76290
D	-12	HIS	-	expression tag	UNP O76290
D	-11	HIS	-	expression tag	UNP O76290
D	-10	HIS	-	expression tag	UNP O76290
D	-9	SER	-	expression tag	UNP O76290
D	-8	SER	-	expression tag	UNP O76290
D	-7	GLY	-	expression tag	UNP O76290
D	-6	LEU	-	expression tag	UNP O76290
D	-5	VAL	-	expression tag	UNP O76290
D	-4	PRO	-	expression tag	UNP O76290
D	-3	ARG	-	expression tag	UNP O76290
D	-2	GLY	-	expression tag	UNP O76290
D	-1	SER	-	expression tag	UNP O76290
D	0	HIS	-	expression tag	UNP O76290

- Molecule 2 is NADP NICOTINAMIDE-ADENINE-DINUCLEOTIDE PHOSPHATE (three-letter code: NAP) (formula: $C_{21}H_{28}N_7O_{17}P_3$).



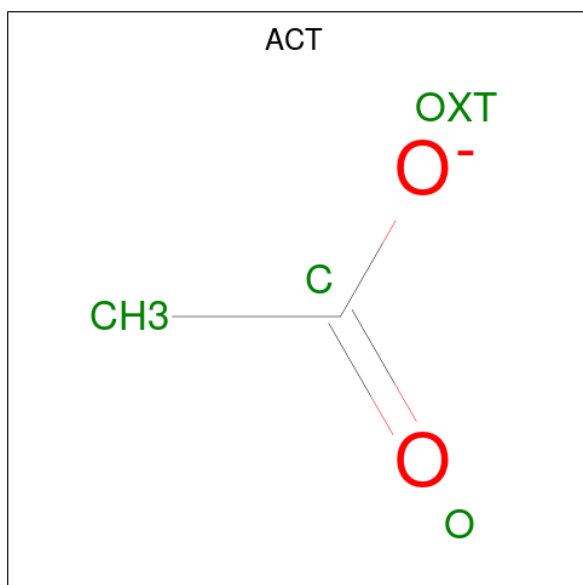
Mol	Chain	Residues	Atoms				ZeroOcc	AltConf	
			Total	C	N	O			P
2	A	1	Total	C	N	O	P	0	0
			48	21	7	17	3		
2	B	1	Total	C	N	O	P	0	0
			48	21	7	17	3		

Continued on next page...

Continued from previous page...

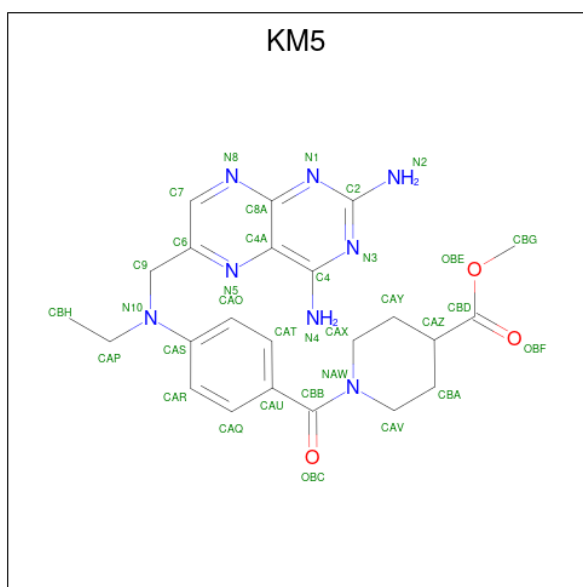
Mol	Chain	Residues	Atoms				ZeroOcc	AltConf	
2	C	1	Total	C	N	O	P	0	1
			48	21	7	17	3		
2	D	1	Total	C	N	O	P	0	0
			48	21	7	17	3		

- Molecule 3 is ACETATE ION (three-letter code: ACT) (formula: C₂H₃O₂).



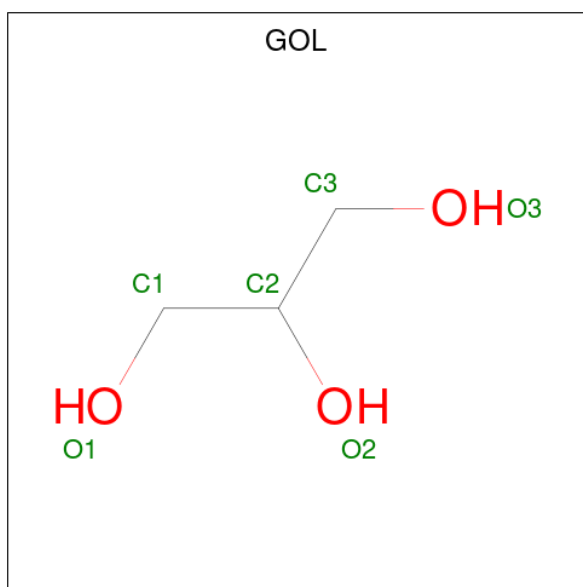
Mol	Chain	Residues	Atoms		ZeroOcc	AltConf	
3	A	1	Total	C	O	0	0
			4	2	2		

- Molecule 4 is methyl 1-[4-[[2,4-bis(azanyl)pteridin-6-yl]methyl-ethyl-amino]phenyl]carbonylpiperidine-4-carboxylate (three-letter code: KM5) (formula: C₂₃H₂₈N₈O₃) (labeled as "Ligand of Interest" by depositor).



Mol	Chain	Residues	Atoms				ZeroOcc	AltConf
			Total	C	N	O		
4	A	1	34	23	8	3	0	1
4	B	1	34	23	8	3	0	0
4	D	1	34	23	8	3	0	0

- Molecule 5 is GLYCEROL (three-letter code: GOL) (formula: C₃H₈O₃).



Mol	Chain	Residues	Atoms			ZeroOcc	AltConf
			Total	C	O		
5	A	1	6	3	3	0	0


- Molecule 6 is water.

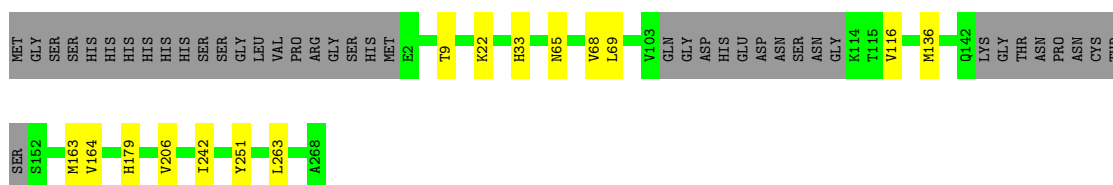
Mol	Chain	Residues	Atoms		ZeroOcc	AltConf
6	A	288	Total 294	O 294	0	10
6	B	292	Total 300	O 300	0	16
6	C	235	Total 238	O 238	0	10
6	D	249	Total 253	O 253	0	6

3 Residue-property plots [i](#)


These plots are drawn for all protein, RNA, DNA and oligosaccharide chains in the entry. The first graphic for a chain summarises the proportions of the various outlier classes displayed in the second graphic. The second graphic shows the sequence view annotated by issues in geometry and electron density. Residues are color-coded according to the number of geometric quality criteria for which they contain at least one outlier: green = 0, yellow = 1, orange = 2 and red = 3 or more. A red dot above a residue indicates a poor fit to the electron density ($RSRZ > 2$). Stretches of 2 or more consecutive residues without any outlier are shown as a green connector. Residues present in the sample, but not in the model, are shown in grey.

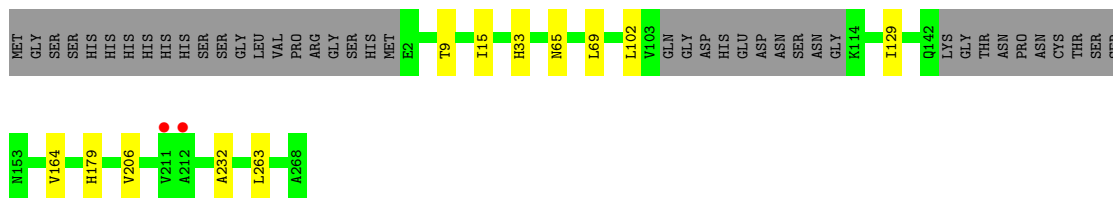
- Molecule 1: Pteridine reductase

Chain A: 




- Molecule 1: Pteridine reductase

Chain B: 




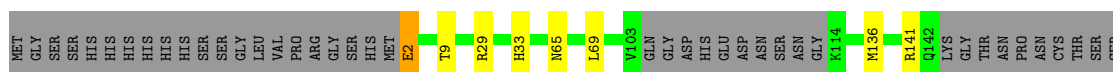
- Molecule 1: Pteridine reductase

Chain C: 



- Molecule 1: Pteridine reductase

Chain D: 





4 Data and refinement statistics i

Property	Value	Source
Space group	P 1 21 1	Depositor
Cell constants a, b, c, α , β , γ	74.85Å 90.50Å 82.95Å 90.00° 115.77° 90.00°	Depositor
Resolution (Å)	57.61 – 1.20 57.61 – 1.20	Depositor EDS
% Data completeness (in resolution range)	90.4 (57.61-1.20) 90.4 (57.61-1.20)	Depositor EDS
R_{merge}	0.04	Depositor
R_{sym}	(Not available)	Depositor
$\langle I/\sigma(I) \rangle$ ¹	2.57 (at 1.20Å)	Xtrriage
Refinement program	REFMAC 5.8.0158	Depositor
R, R_{free}	0.128 , 0.152 0.128 , 0.153	Depositor DCC
R_{free} test set	14067 reflections (5.02%)	wwPDB-VP
Wilson B-factor (Å ²)	7.3	Xtrriage
Anisotropy	0.616	Xtrriage
Bulk solvent k_{sol} (e/Å ³), B_{sol} (Å ²)	0.35 , 60.3	EDS
L-test for twinning ²	$\langle L \rangle = 0.49$, $\langle L^2 \rangle = 0.32$	Xtrriage
Estimated twinning fraction	0.015 for h,-k,-h-l	Xtrriage
F_o, F_c correlation	0.98	EDS
Total number of atoms	8783	wwPDB-VP
Average B, all atoms (Å ²)	13.0	wwPDB-VP

Xtrriage's analysis on translational NCS is as follows: *The analyses of the Patterson function reveals a significant off-origin peak that is 25.75 % of the origin peak, indicating pseudo-translational symmetry. The chance of finding a peak of this or larger height randomly in a structure without pseudo-translational symmetry is equal to 2.9935e-03. The detected translational NCS is most likely also responsible for the elevated intensity ratio.*

¹Intensities estimated from amplitudes.

²Theoretical values of $\langle |L| \rangle$, $\langle L^2 \rangle$ for acentric reflections are 0.5, 0.333 respectively for untwinned datasets, and 0.375, 0.2 for perfectly twinned datasets.

5 Model quality [i](#)

5.1 Standard geometry [i](#)

Bond lengths and bond angles in the following residue types are not validated in this section: GOL, KM5, ACT, NAP

The Z score for a bond length (or angle) is the number of standard deviations the observed value is removed from the expected value. A bond length (or angle) with $|Z| > 5$ is considered an outlier worth inspection. RMSZ is the root-mean-square of all Z scores of the bond lengths (or angles).

Mol	Chain	Bond lengths		Bond angles	
		RMSZ	# Z >5	RMSZ	# Z >5
1	A	0.53	0/1940	0.73	0/2633
1	B	0.52	0/1971	0.75	0/2675
1	C	0.51	0/1776	0.69	0/2413
1	D	0.56	0/1919	0.72	0/2609
All	All	0.53	0/7606	0.72	0/10330

There are no bond length outliers.

There are no bond angle outliers.

There are no chirality outliers.

There are no planarity outliers.

5.2 Too-close contacts [i](#)

In the following table, the Non-H and H(model) columns list the number of non-hydrogen atoms and hydrogen atoms in the chain respectively. The H(added) column lists the number of hydrogen atoms added and optimized by MolProbity. The Clashes column lists the number of clashes within the asymmetric unit, whereas Symm-Clashes lists symmetry-related clashes.

Mol	Chain	Non-H	H(model)	H(added)	Clashes	Symm-Clashes
1	A	1901	0	1934	10	0
1	B	1905	0	1950	8	0
1	C	1726	0	1748	9	0
1	D	1862	0	1901	11	0
2	A	48	0	25	0	0
2	B	48	0	25	1	0
2	C	48	0	25	2	0
2	D	48	0	25	0	0
3	A	4	0	3	0	0

Continued on next page...

Continued from previous page...

Mol	Chain	Non-H	H(model)	H(added)	Clashes	Symm-Clashes
4	A	34	0	0	0	0
4	B	34	0	0	0	0
4	D	34	0	0	0	0
5	A	6	0	8	0	0
6	A	294	0	0	2	0
6	B	300	0	0	0	0
6	C	238	0	0	1	0
6	D	253	0	0	2	0
All	All	8783	0	7644	33	0

The all-atom clashscore is defined as the number of clashes found per 1000 atoms (including hydrogen atoms). The all-atom clashscore for this structure is 2.

All (33) close contacts within the same asymmetric unit are listed below, sorted by their clash magnitude.

Atom-1	Atom-2	Interatomic distance (Å)	Clash overlap (Å)
1:A:116[B]:VAL:HG22	6:A:445:HOH:O	1.82	0.80
1:D:164:VAL:HG22	1:D:179:HIS:CD2	2.32	0.64
1:B:164:VAL:HG22	1:B:179:HIS:CD2	2.35	0.62
1:D:206:VAL:HG23	1:D:263:LEU:HD22	1.85	0.59
1:A:164:VAL:HG22	1:A:179:HIS:CD2	2.40	0.56
1:D:141:ARG:HG2	6:D:584:HOH:O	2.06	0.55
1:A:206:VAL:HG23	1:A:263:LEU:HD22	1.88	0.54
1:C:164:VAL:HG22	1:C:179:HIS:CD2	2.43	0.54
1:A:136[B]:MET:HE1	6:C:445:HOH:O	2.08	0.53
1:A:22:LYS:HG2	1:A:242:ILE:HG13	1.94	0.50
1:B:206:VAL:HG23	1:B:263:LEU:HD22	1.94	0.49
1:D:2[A]:GLU:HG3	1:D:29:ARG:NH2	2.29	0.47
1:A:68[B]:VAL:HG12	1:A:68[B]:VAL:O	2.15	0.46
1:A:163:MET:HG3	6:A:680:HOH:O	2.16	0.45
1:C:9:THR:HA	1:C:33:HIS:HB3	2.00	0.44
1:C:250:GLN:CG	1:D:236:GLN:HE21	2.30	0.44
1:D:9:THR:HA	1:D:33:HIS:HB3	2.00	0.43
1:D:65:ASN:HA	1:D:69:LEU:HD22	1.99	0.43
1:C:190[B]:LEU:HA	1:C:190[B]:LEU:HD23	1.74	0.43
1:A:251:TYR:CE2	1:B:232:ALA:HB2	2.54	0.43
1:A:9:THR:HA	1:A:33:HIS:HB3	2.01	0.42
1:C:265:LEU:HD11	1:D:254:GLY:HA3	2.01	0.42
1:C:65:ASN:HA	1:C:69:LEU:HD22	2.00	0.42
1:C:15:ILE:HB	2:C:301[A]:NAP:H51N	2.01	0.42
1:C:190[B]:LEU:HD11	1:D:265:LEU:O	2.19	0.42

Continued on next page...

Continued from previous page...

Atom-1	Atom-2	Interatomic distance (Å)	Clash overlap (Å)
1:B:65:ASN:HA	1:B:69:LEU:HD22	2.00	0.41
1:B:102:LEU:O	1:D:136[B]:MET:HG3	2.20	0.41
1:B:15:ILE:HB	2:B:301:NAP:H51N	2.03	0.41
1:C:14:ARG:NE	2:C:301[A]:NAP:O1A	2.54	0.41
1:A:65:ASN:HA	1:A:69:LEU:HD22	2.02	0.40
1:D:163:MET:HG3	6:D:636:HOH:O	2.20	0.40
1:B:9:THR:HA	1:B:33:HIS:HB3	2.03	0.40
1:B:65:ASN:ND2	1:B:129[A]:ILE:HG21	2.37	0.40

There are no symmetry-related clashes.

5.3 Torsion angles [i](#)

5.3.1 Protein backbone [i](#)

In the following table, the Percentiles column shows the percent Ramachandran outliers of the chain as a percentile score with respect to all X-ray entries followed by that with respect to entries of similar resolution.

The Analysed column shows the number of residues for which the backbone conformation was analysed, and the total number of residues.

Mol	Chain	Analysed	Favoured	Allowed	Outliers	Percentiles	
1	A	252/288 (88%)	244 (97%)	8 (3%)	0	100	100
1	B	255/288 (88%)	249 (98%)	6 (2%)	0	100	100
1	C	232/288 (81%)	226 (97%)	6 (3%)	0	100	100
1	D	251/288 (87%)	244 (97%)	7 (3%)	0	100	100
All	All	990/1152 (86%)	963 (97%)	27 (3%)	0	100	100

There are no Ramachandran outliers to report.

5.3.2 Protein sidechains [i](#)

In the following table, the Percentiles column shows the percent sidechain outliers of the chain as a percentile score with respect to all X-ray entries followed by that with respect to entries of similar resolution.

The Analysed column shows the number of residues for which the sidechain conformation was analysed, and the total number of residues.

Mol	Chain	Analysed	Rotameric	Outliers	Percentiles	
1	A	203/231 (88%)	203 (100%)	0	100	100
1	B	207/231 (90%)	207 (100%)	0	100	100
1	C	185/231 (80%)	184 (100%)	1 (0%)	88	67
1	D	199/231 (86%)	198 (100%)	1 (0%)	88	67
All	All	794/924 (86%)	792 (100%)	2 (0%)	92	79

All (2) residues with a non-rotameric sidechain are listed below:

Mol	Chain	Res	Type
1	C	166	GLN
1	D	2[A]	GLU

Sometimes sidechains can be flipped to improve hydrogen bonding and reduce clashes. All (5) such sidechains are listed below:

Mol	Chain	Res	Type
1	A	179	HIS
1	B	65	ASN
1	B	119	GLN
1	C	179	HIS
1	D	119	GLN

5.3.3 RNA [i](#)

There are no RNA molecules in this entry.

5.4 Non-standard residues in protein, DNA, RNA chains [i](#)

There are no non-standard protein/DNA/RNA residues in this entry.

5.5 Carbohydrates [i](#)

There are no monosaccharides in this entry.

5.6 Ligand geometry [i](#)

9 ligands are modelled in this entry.

In the following table, the Counts columns list the number of bonds (or angles) for which Mogul statistics could be retrieved, the number of bonds (or angles) that are observed in the model and the number of bonds (or angles) that are defined in the Chemical Component Dictionary. The Link column lists molecule types, if any, to which the group is linked. The Z score for a bond length (or angle) is the number of standard deviations the observed value is removed from the expected value. A bond length (or angle) with $|Z| > 2$ is considered an outlier worth inspection. RMSZ is the root-mean-square of all Z scores of the bond lengths (or angles).

Mol	Type	Chain	Res	Link	Bond lengths			Bond angles		
					Counts	RMSZ	# Z > 2	Counts	RMSZ	# Z > 2
5	GOL	A	304	-	5,5,5	0.34	0	5,5,5	0.56	0
2	NAP	C	301[A]	-	45,52,52	0.75	1 (2%)	56,80,80	1.15	6 (10%)
4	KM5	B	302	-	37,37,37	1.51	7 (18%)	50,52,52	1.97	12 (24%)
4	KM5	A	303[A]	-	37,37,37	1.63	6 (16%)	50,52,52	2.01	13 (26%)
2	NAP	A	301	-	45,52,52	0.72	0	56,80,80	1.16	5 (8%)
2	NAP	D	301	-	45,52,52	0.93	1 (2%)	56,80,80	1.24	5 (8%)
2	NAP	B	301	-	45,52,52	0.75	0	56,80,80	0.99	3 (5%)
4	KM5	D	302	-	37,37,37	1.76	8 (21%)	50,52,52	1.89	15 (30%)
3	ACT	A	302	-	3,3,3	0.77	0	3,3,3	1.17	0

In the following table, the Chirals column lists the number of chiral outliers, the number of chiral centers analysed, the number of these observed in the model and the number defined in the Chemical Component Dictionary. Similar counts are reported in the Torsion and Rings columns. '-' means no outliers of that kind were identified.

Mol	Type	Chain	Res	Link	Chirals	Torsions	Rings
5	GOL	A	304	-	-	0/4/4/4	-
2	NAP	C	301[A]	-	-	0/31/67/67	0/5/5/5
4	KM5	B	302	-	-	2/24/34/34	0/4/4/4
4	KM5	A	303[A]	-	-	0/24/34/34	1/4/4/4
2	NAP	A	301	-	-	0/31/67/67	0/5/5/5
2	NAP	D	301	-	-	0/31/67/67	0/5/5/5
2	NAP	B	301	-	-	0/31/67/67	0/5/5/5
4	KM5	D	302	-	-	2/24/34/34	0/4/4/4

All (23) bond length outliers are listed below:

Mol	Chain	Res	Type	Atoms	Z	Observed(Å)	Ideal(Å)
4	D	302	KM5	C7-N8	4.74	1.39	1.31
4	D	302	KM5	CAU-CBB	-4.71	1.42	1.50
4	A	303[A]	KM5	CAU-CBB	-4.38	1.42	1.50
4	A	303[A]	KM5	C7-N8	4.27	1.38	1.31
4	A	303[A]	KM5	C9-C6	-4.20	1.44	1.51

Continued on next page...

Continued from previous page...

Mol	Chain	Res	Type	Atoms	Z	Observed(Å)	Ideal(Å)
4	B	302	KM5	C7-N8	3.92	1.38	1.31
4	D	302	KM5	C9-C6	-3.83	1.44	1.51
4	B	302	KM5	C9-C6	-3.77	1.45	1.51
4	B	302	KM5	CAU-CBB	-3.53	1.44	1.50
2	D	301	NAP	P2B-O2B	2.96	1.64	1.59
4	D	302	KM5	CAY-CAZ	-2.88	1.45	1.53
4	A	303[A]	KM5	C6-N5	2.76	1.37	1.32
4	A	303[A]	KM5	CAY-CAZ	-2.65	1.46	1.53
4	D	302	KM5	C9-N10	2.55	1.49	1.46
4	B	302	KM5	C6-N5	2.53	1.37	1.32
4	D	302	KM5	CAY-CAX	-2.48	1.45	1.52
4	A	303[A]	KM5	CAY-CAX	-2.44	1.45	1.52
4	B	302	KM5	CAX-NAW	2.41	1.51	1.47
2	C	301[A]	NAP	C5A-C4A	2.28	1.47	1.40
4	B	302	KM5	CAV-NAW	2.20	1.50	1.47
4	D	302	KM5	C6-N5	2.17	1.36	1.32
4	B	302	KM5	CAY-CAZ	-2.13	1.47	1.53
4	D	302	KM5	CAV-NAW	2.09	1.50	1.47

All (59) bond angle outliers are listed below:

Mol	Chain	Res	Type	Atoms	Z	Observed(°)	Ideal(°)
4	A	303[A]	KM5	C2-N1-C8A	6.34	122.60	115.36
4	B	302	KM5	C2-N1-C8A	6.00	122.21	115.36
4	A	303[A]	KM5	N1-C2-N3	-5.26	120.21	127.22
4	B	302	KM5	N1-C2-N3	-4.64	121.03	127.22
4	B	302	KM5	CAX-CAY-CAZ	-4.61	102.74	110.41
4	D	302	KM5	C2-N1-C8A	4.47	120.46	115.36
4	D	302	KM5	N1-C2-N3	-3.90	122.02	127.22
4	D	302	KM5	CAX-CAY-CAZ	-3.78	104.11	110.41
4	A	303[A]	KM5	N8-C8A-N1	3.55	119.88	115.82
2	D	301	NAP	C1B-N9A-C4A	-3.49	120.50	126.64
2	B	301	NAP	C1B-N9A-C4A	-3.45	120.58	126.64
4	D	302	KM5	CBG-OBE-CBD	-3.44	108.16	115.94
4	D	302	KM5	CAU-CBB-NAW	3.33	122.95	118.72
4	B	302	KM5	C9-C6-N5	3.31	122.27	116.96
2	D	301	NAP	C3N-C7N-N7N	3.31	121.72	117.75
2	C	301[A]	NAP	N3A-C2A-N1A	-3.25	123.60	128.68
4	D	302	KM5	C7-C6-N5	-3.22	118.74	120.85
4	A	303[A]	KM5	C6-C7-N8	-3.20	119.99	123.13
4	B	302	KM5	CBG-OBE-CBD	-3.15	108.81	115.94
4	A	303[A]	KM5	CAU-CBB-NAW	3.13	122.70	118.72

Continued on next page...

Continued from previous page...

Mol	Chain	Res	Type	Atoms	Z	Observed(°)	Ideal(°)
4	B	302	KM5	N8-C8A-N1	3.08	119.34	115.82
2	A	301	NAP	C1B-N9A-C4A	-3.01	121.35	126.64
2	C	301[A]	NAP	C1B-N9A-C4A	-2.97	121.43	126.64
4	B	302	KM5	C4-C4A-N5	2.95	122.60	120.33
2	A	301	NAP	C6N-N1N-C2N	-2.89	119.34	121.97
4	D	302	KM5	CBA-CAV-NAW	2.85	115.16	110.82
4	B	302	KM5	CAU-CBB-NAW	2.85	122.33	118.72
2	A	301	NAP	N3A-C2A-N1A	-2.74	124.39	128.68
2	C	301[A]	NAP	C4A-C5A-N7A	-2.71	106.57	109.40
4	A	303[A]	KM5	C4-C4A-N5	2.69	122.39	120.33
4	D	302	KM5	OBE-CBD-CAZ	2.68	115.87	111.76
4	A	303[A]	KM5	CBG-OBE-CBD	-2.61	110.04	115.94
4	D	302	KM5	CAT-CAO-CAS	2.55	123.68	120.32
2	D	301	NAP	N3A-C2A-N1A	-2.55	124.69	128.68
4	D	302	KM5	C9-C6-N5	2.40	120.81	116.96
2	A	301	NAP	C3N-C2N-N1N	2.40	122.77	120.43
2	D	301	NAP	O7N-C7N-N7N	-2.39	119.18	122.58
4	A	303[A]	KM5	CAY-CAX-NAW	-2.35	107.25	110.82
2	C	301[A]	NAP	PN-O3-PA	-2.35	124.77	132.83
4	A	303[A]	KM5	CAT-CAO-CAS	2.34	123.40	120.32
4	D	302	KM5	C4-C4A-N5	2.33	122.12	120.33
4	D	302	KM5	N8-C8A-N1	2.31	118.45	115.82
4	A	303[A]	KM5	C7-N8-C8A	2.28	118.98	116.69
4	D	302	KM5	CAR-CAS-N10	2.24	124.47	121.38
4	D	302	KM5	C4A-C4-N3	-2.22	119.55	121.01
2	C	301[A]	NAP	C2A-N1A-C6A	2.21	122.54	118.75
2	C	301[A]	NAP	C3N-C7N-N7N	2.21	120.40	117.75
2	B	301	NAP	C3N-C7N-N7N	2.21	120.40	117.75
2	A	301	NAP	C5N-C4N-C3N	-2.17	117.77	120.34
4	B	302	KM5	C6-C9-N10	-2.14	111.49	114.27
4	A	303[A]	KM5	N2-C2-N1	2.13	121.26	117.79
4	B	302	KM5	CAQ-CAU-CAT	-2.11	115.59	118.59
4	A	303[A]	KM5	C8A-C4A-N5	-2.08	119.89	122.41
4	D	302	KM5	OBC-CBB-CAU	-2.06	116.21	120.23
2	D	301	NAP	C6N-N1N-C2N	-2.06	120.10	121.97
2	B	301	NAP	N3A-C2A-N1A	-2.05	125.48	128.68
4	B	302	KM5	CAY-CAX-NAW	-2.05	107.71	110.82
4	B	302	KM5	CAR-CAQ-CAU	2.02	123.13	120.78
4	A	303[A]	KM5	CAV-NAW-CBB	-2.01	116.43	122.78

There are no chirality outliers.

All (4) torsion outliers are listed below:

Mol	Chain	Res	Type	Atoms
4	B	302	KM5	CAZ-CBD-OBE-CBG
4	B	302	KM5	OBF-CBD-OBE-CBG
4	D	302	KM5	CBA-CAZ-CBD-OBE
4	D	302	KM5	CBA-CAZ-CBD-OBF

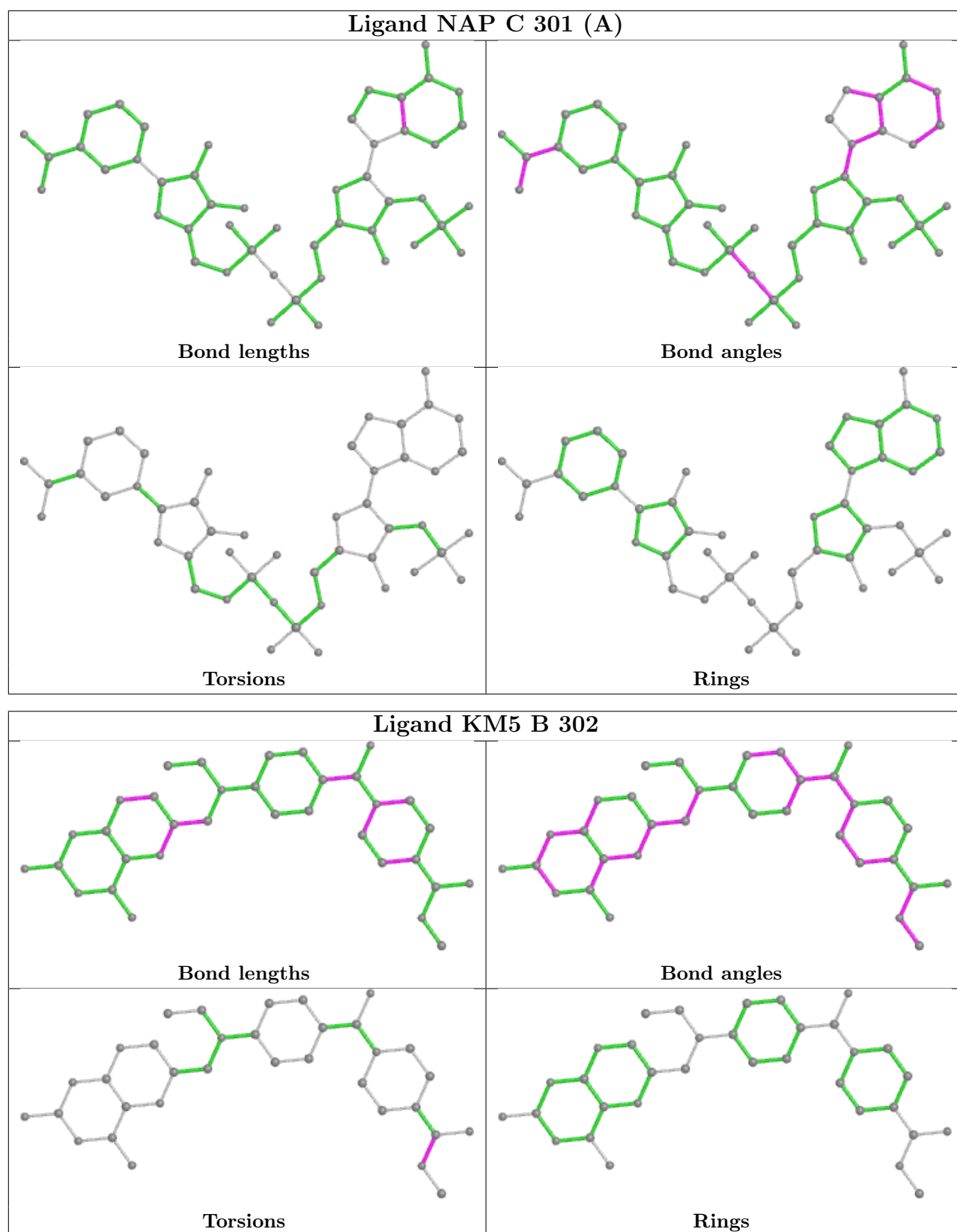
All (1) ring outliers are listed below:

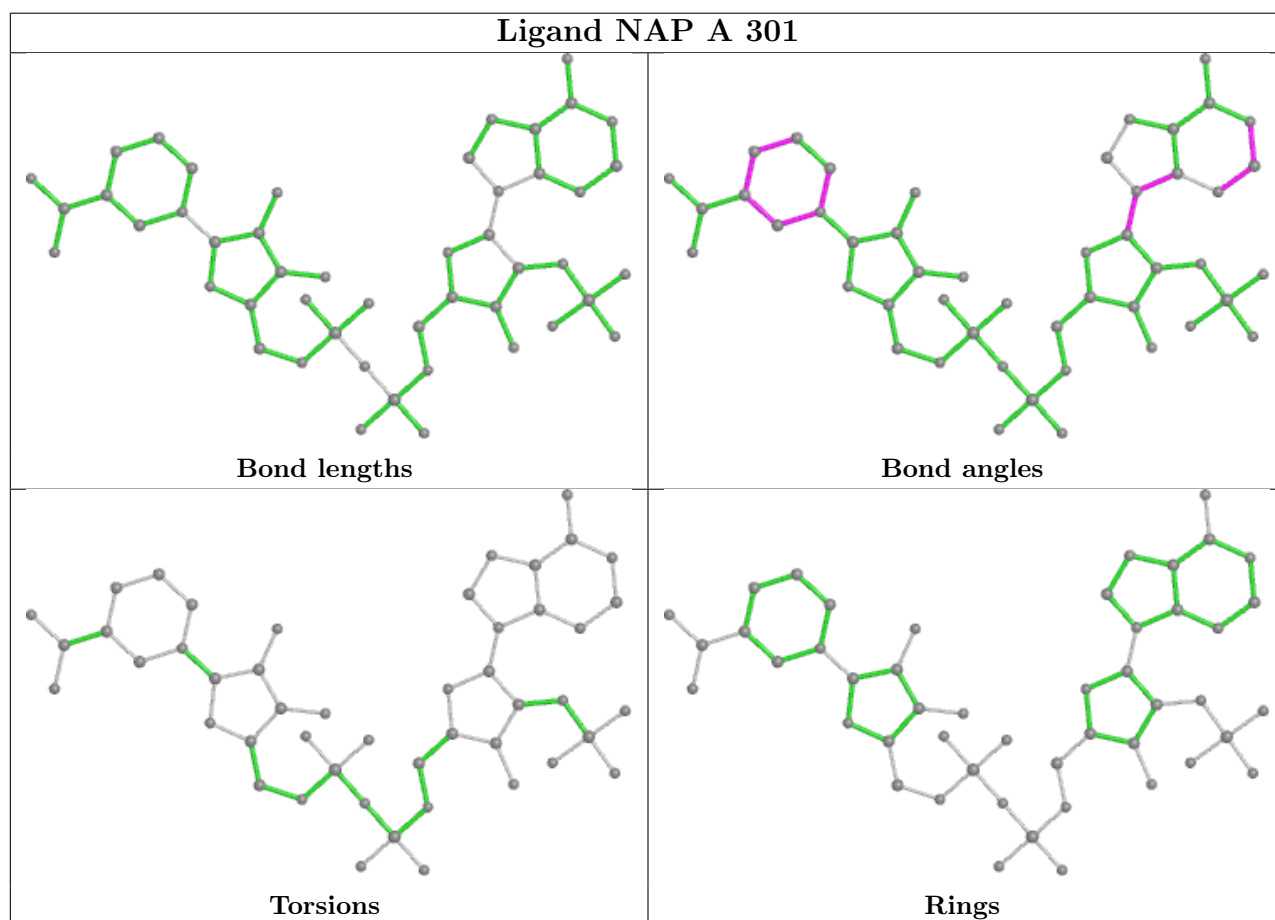
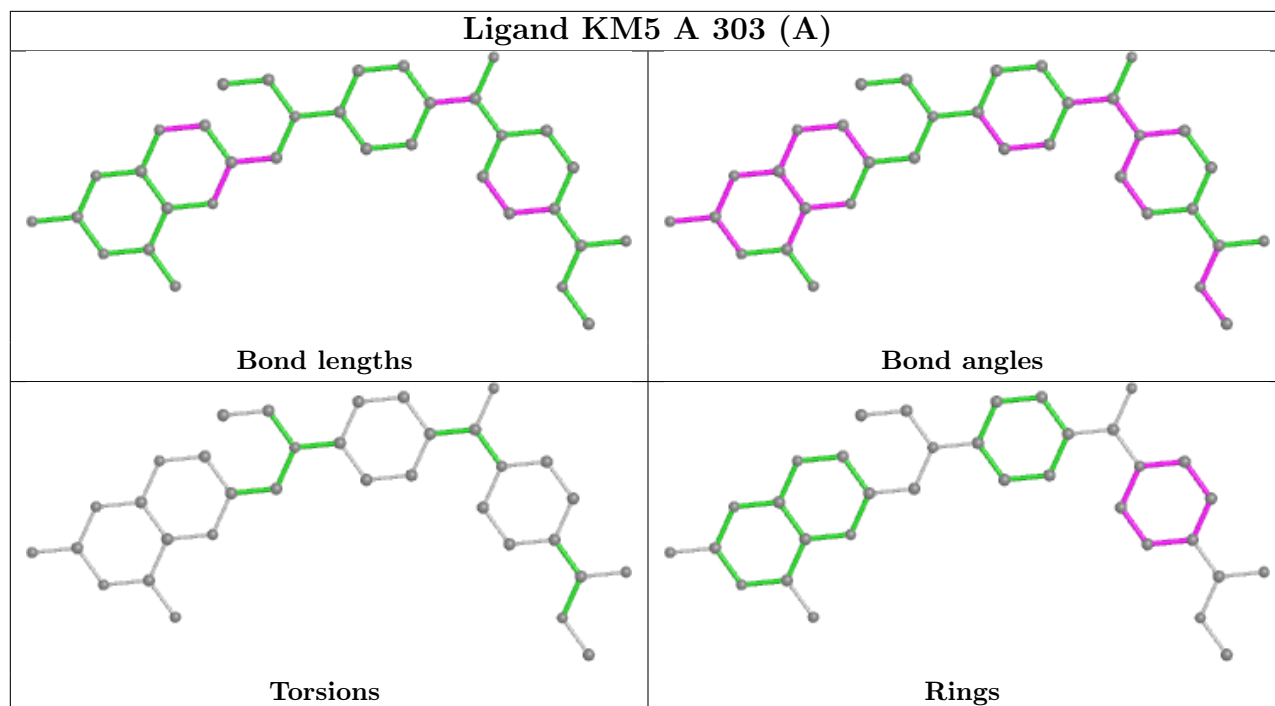
Mol	Chain	Res	Type	Atoms
4	A	303[A]	KM5	CAV-CAX-CAY-CAZ-CBA-NAW

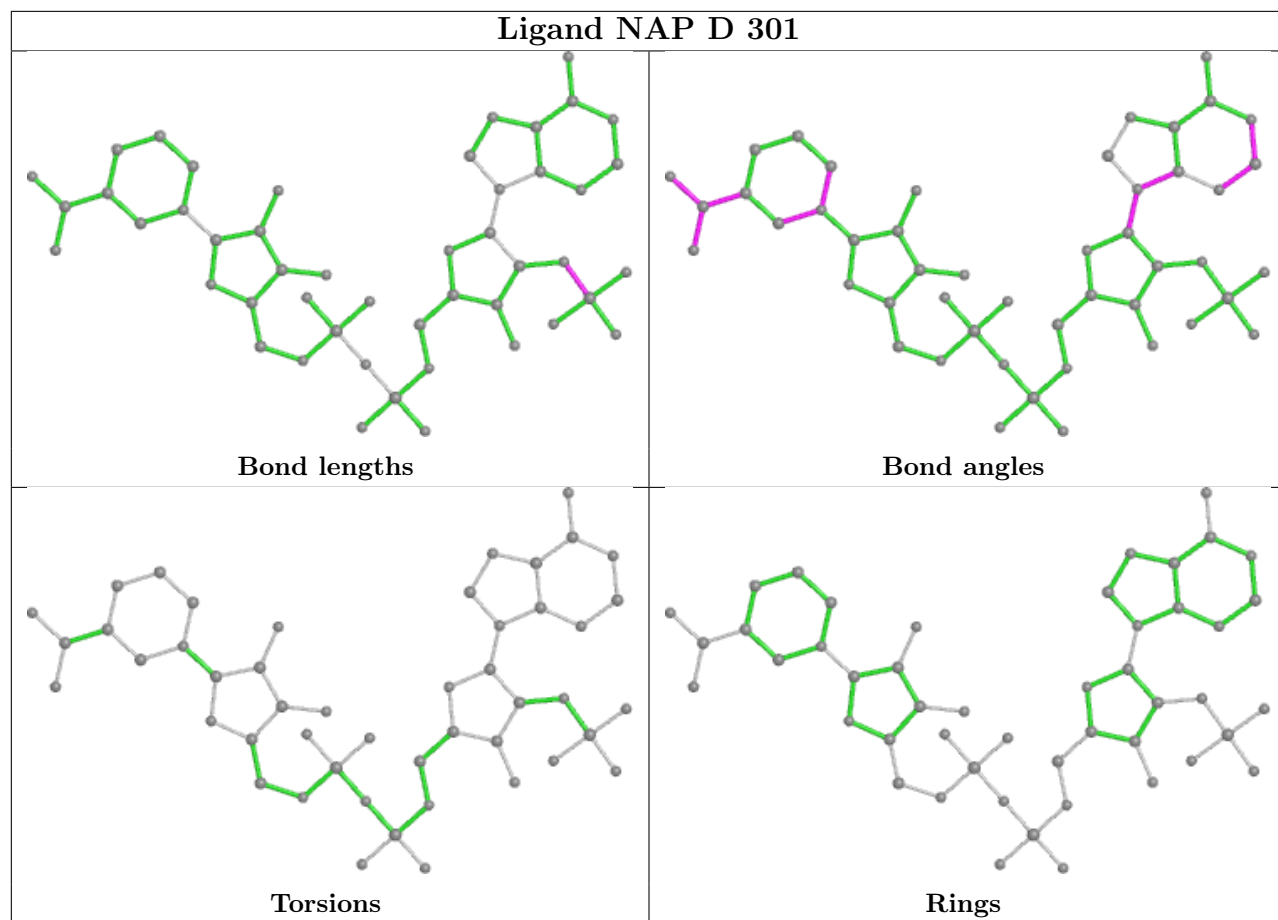
2 monomers are involved in 3 short contacts:

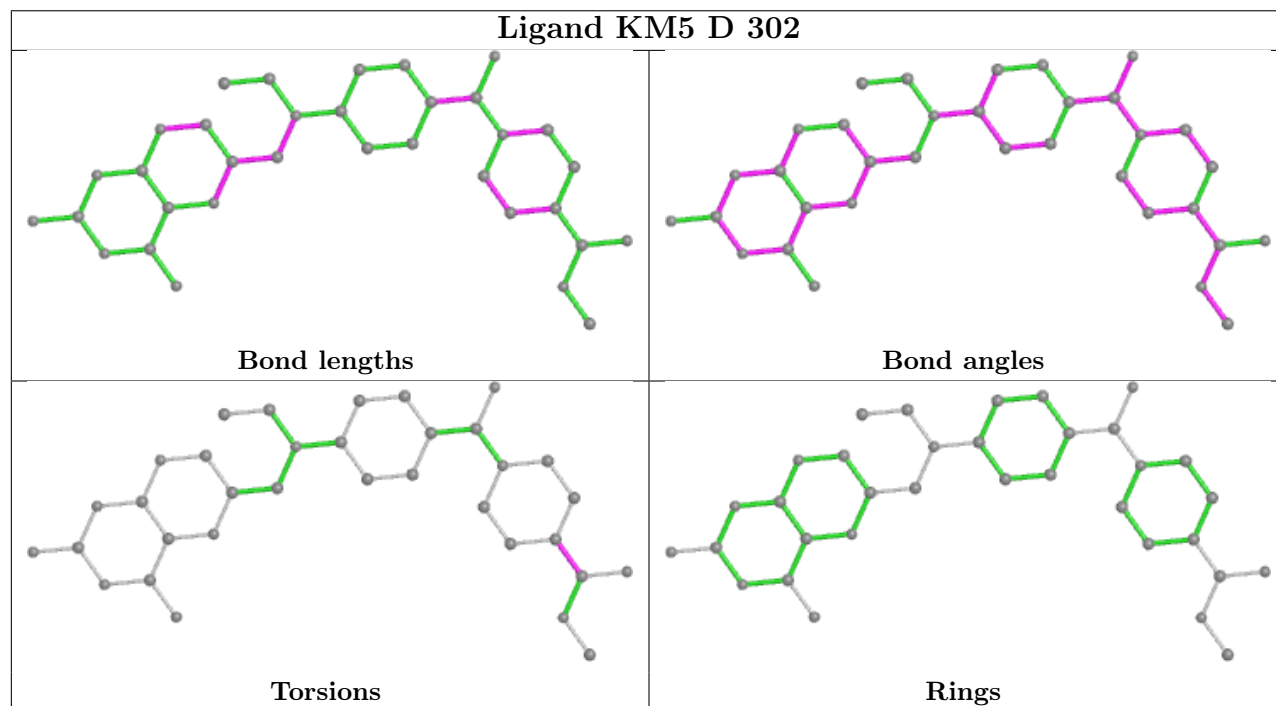
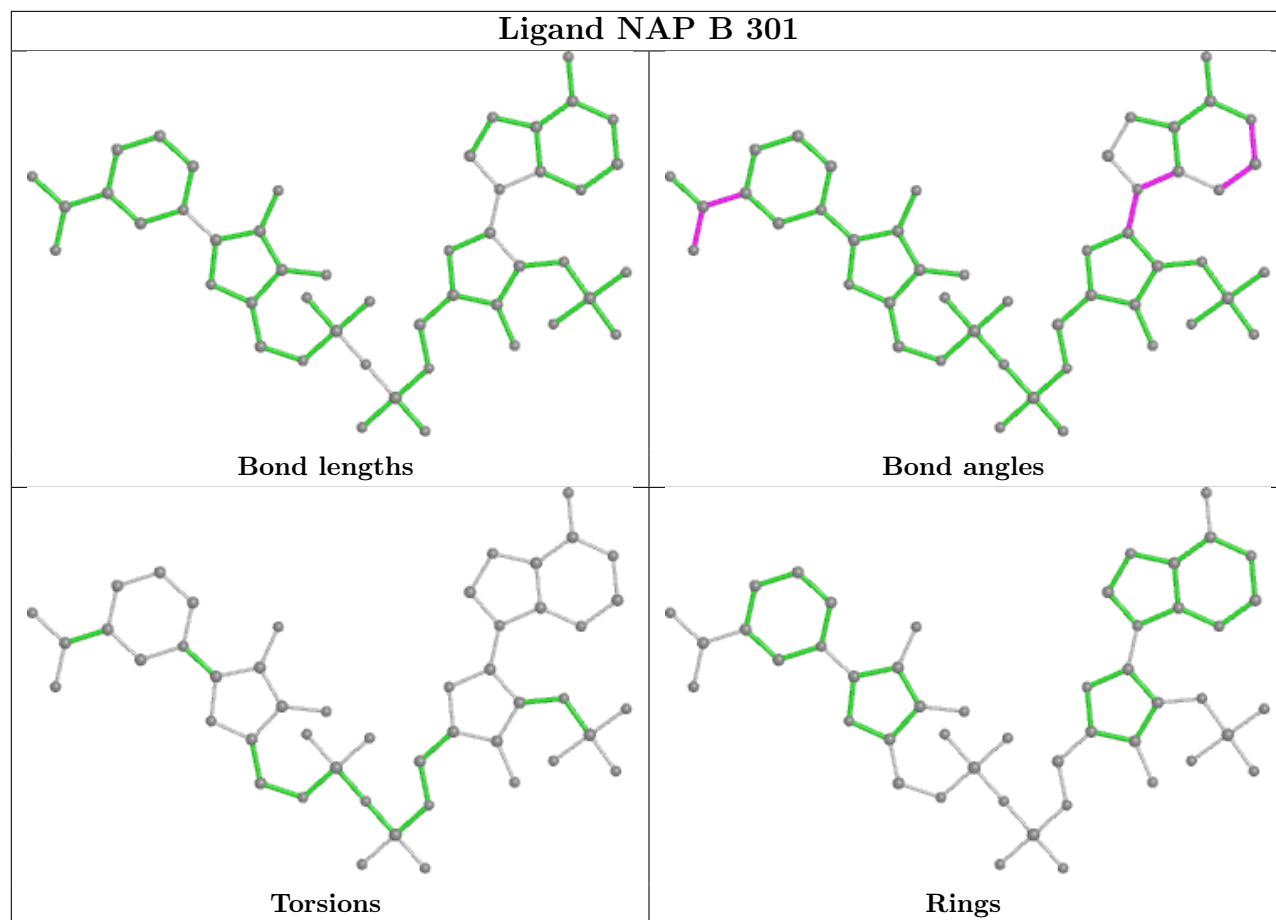
Mol	Chain	Res	Type	Clashes	Symm-Clashes
2	C	301[A]	NAP	2	0
2	B	301	NAP	1	0

The following is a two-dimensional graphical depiction of Mogul quality analysis of bond lengths, bond angles, torsion angles, and ring geometry for all instances of the Ligand of Interest. In addition, ligands with molecular weight > 250 and outliers as shown on the validation Tables will also be included. For torsion angles, if less than 5% of the Mogul distribution of torsion angles is within 10 degrees of the torsion angle in question, then that torsion angle is considered an outlier. Any bond that is central to one or more torsion angles identified as an outlier by Mogul will be highlighted in the graph. For rings, the root-mean-square deviation (RMSD) between the ring in question and similar rings identified by Mogul is calculated over all ring torsion angles. If the average RMSD is greater than 60 degrees and the minimal RMSD between the ring in question and any Mogul-identified rings is also greater than 60 degrees, then that ring is considered an outlier. The outliers are highlighted in purple. The color gray indicates Mogul did not find sufficient equivalents in the CSD to analyse the geometry.









5.7 Other polymers [i](#)

There are no such residues in this entry.

5.8 Polymer linkage issues [i](#)

There are no chain breaks in this entry.

6 Fit of model and data [i](#)

6.1 Protein, DNA and RNA chains [i](#)

In the following table, the column labelled ‘#RSRZ> 2’ contains the number (and percentage) of RSRZ outliers, followed by percent RSRZ outliers for the chain as percentile scores relative to all X-ray entries and entries of similar resolution. The OWAB column contains the minimum, median, 95th percentile and maximum values of the occupancy-weighted average B-factor per residue. The column labelled ‘Q< 0.9’ lists the number of (and percentage) of residues with an average occupancy less than 0.9.

Mol	Chain	Analysed	<RSRZ>	#RSRZ>2	OWAB(Å ²)	Q<0.9
1	A	248/288 (86%)	-0.32	0 100 100	5, 9, 21, 35	5 (2%)
1	B	247/288 (85%)	-0.31	2 (0%) 86 86	5, 9, 19, 34	5 (2%)
1	C	231/288 (80%)	-0.37	0 100 100	6, 12, 23, 46	9 (3%)
1	D	247/288 (85%)	-0.30	0 100 100	5, 10, 22, 35	7 (2%)
All	All	973/1152 (84%)	-0.32	2 (0%) 95 94	5, 10, 22, 46	26 (2%)

All (2) RSRZ outliers are listed below:

Mol	Chain	Res	Type	RSRZ
1	B	212	ALA	2.2
1	B	211	VAL	2.1

6.2 Non-standard residues in protein, DNA, RNA chains [i](#)

There are no non-standard protein/DNA/RNA residues in this entry.

6.3 Carbohydrates [i](#)

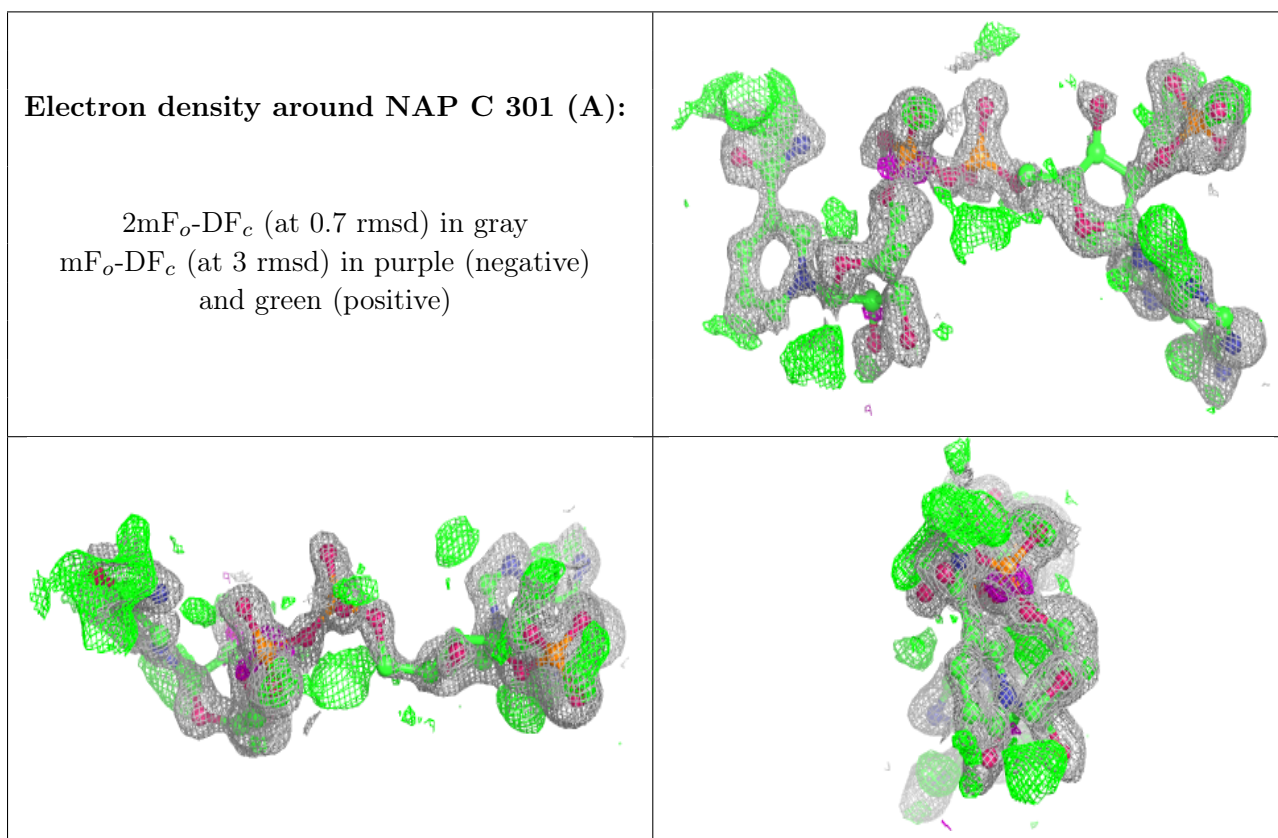
There are no monosaccharides in this entry.

6.4 Ligands [i](#)

In the following table, the Atoms column lists the number of modelled atoms in the group and the number defined in the chemical component dictionary. The B-factors column lists the minimum, median, 95th percentile and maximum values of B factors of atoms in the group. The column labelled ‘Q< 0.9’ lists the number of atoms with occupancy less than 0.9.

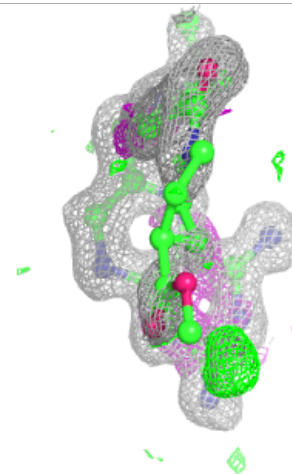
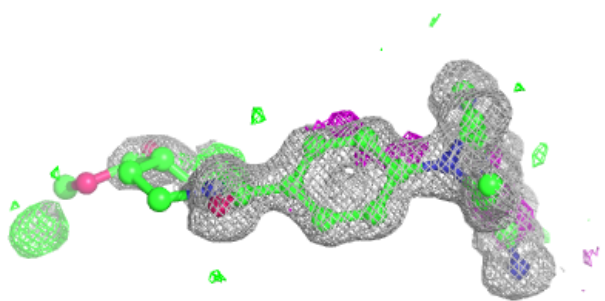
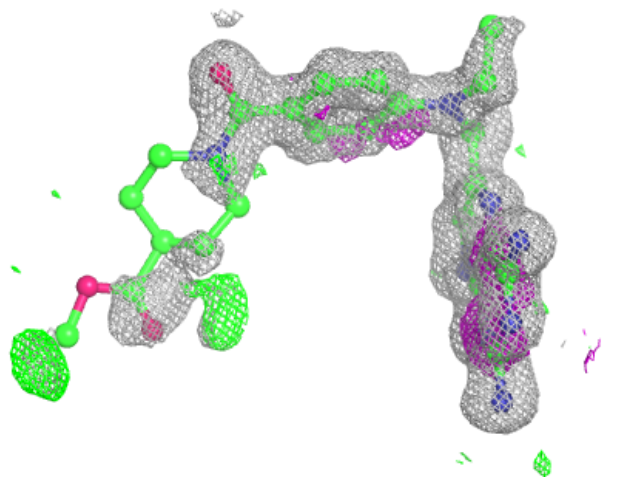
Mol	Type	Chain	Res	Atoms	RSCC	RSR	B-factors(\AA^2)	Q<0.9
2	NAP	C	301[A]	48/48	0.86	0.18	15,18,19,19	48
5	GOL	A	304	6/6	0.86	0.15	14,17,18,19	6
4	KM5	D	302	34/34	0.94	0.17	10,22,39,42	10
4	KM5	B	302	34/34	0.96	0.14	7,15,49,50	10
4	KM5	A	303[A]	34/34	0.97	0.11	9,15,31,32	11
2	NAP	D	301	48/48	0.97	0.10	7,9,10,11	0
2	NAP	B	301	48/48	0.99	0.07	5,7,10,11	0
3	ACT	A	302	4/4	0.99	0.06	12,12,13,14	0
2	NAP	A	301	48/48	0.99	0.07	6,8,10,12	0

The following is a graphical depiction of the model fit to experimental electron density of all instances of the Ligand of Interest. In addition, ligands with molecular weight > 250 and outliers as shown on the geometry validation Tables will also be included. Each fit is shown from different orientation to approximate a three-dimensional view.



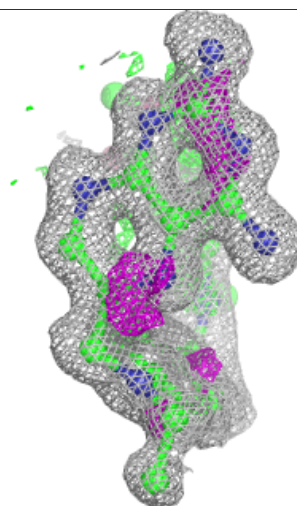
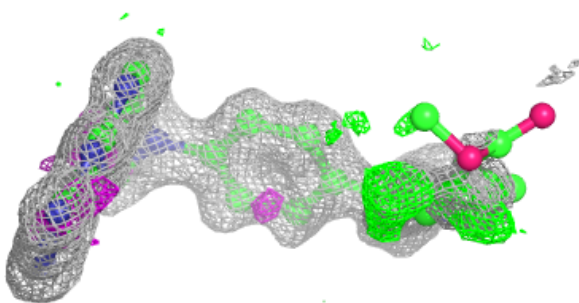
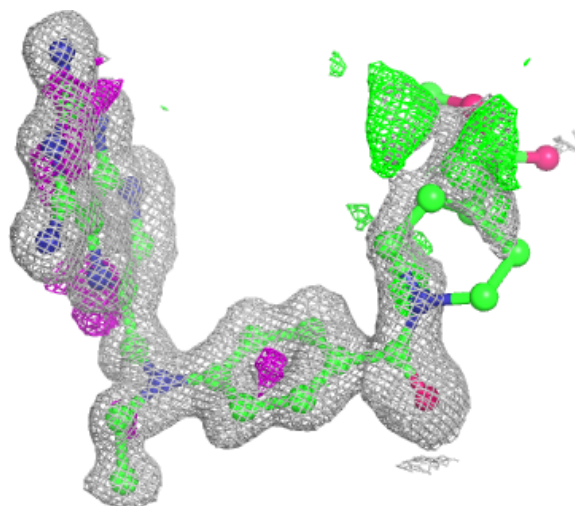
Electron density around KM5 D 302:

$2mF_o-DF_c$ (at 0.7 rmsd) in gray
 mF_o-DF_c (at 3 rmsd) in purple (negative)
and green (positive)



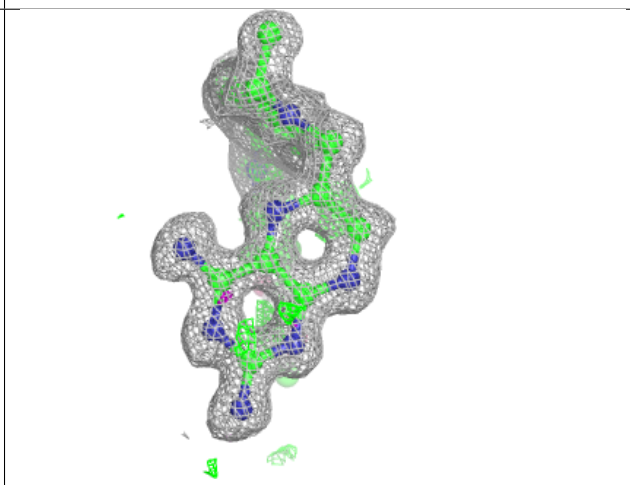
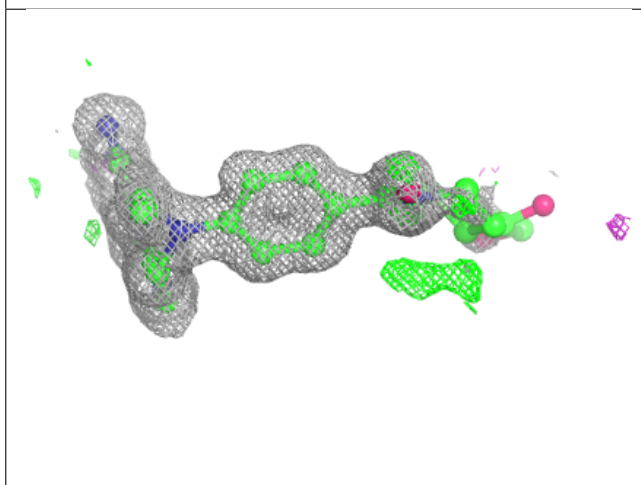
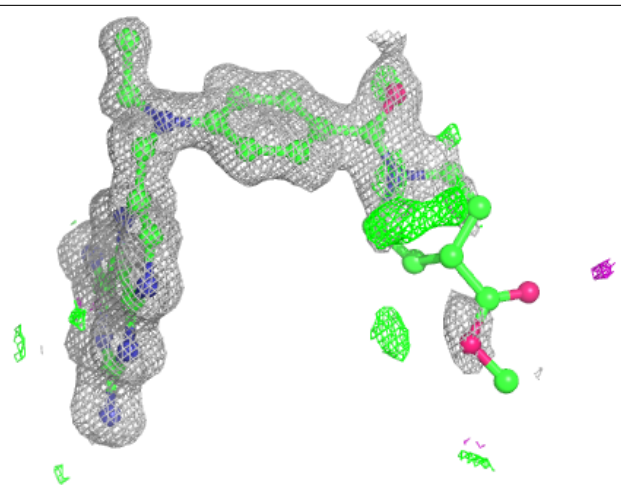
Electron density around KM5 B 302:

$2mF_o-DF_c$ (at 0.7 rmsd) in gray
 mF_o-DF_c (at 3 rmsd) in purple (negative)
and green (positive)



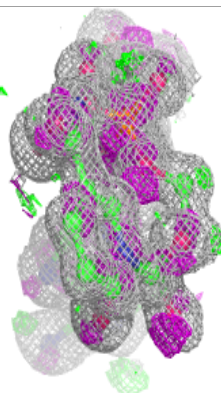
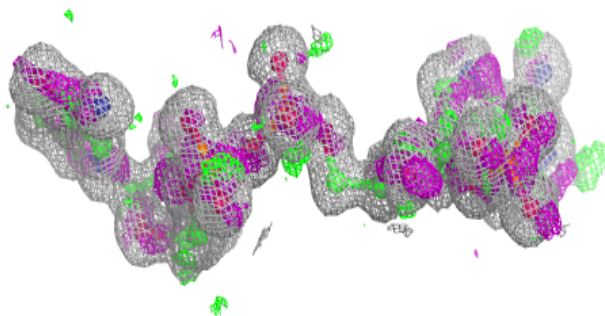
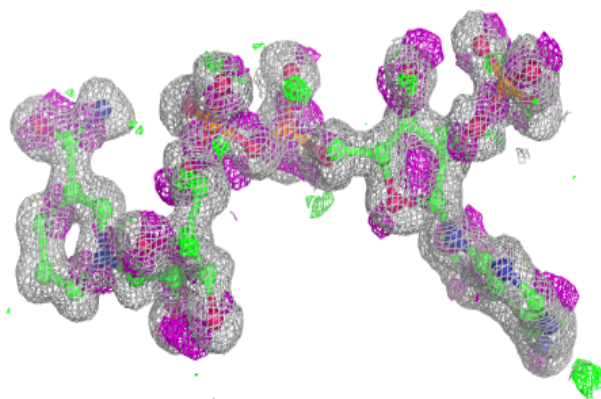
Electron density around KM5 A 303 (A):

$2mF_o-DF_c$ (at 0.7 rmsd) in gray
 mF_o-DF_c (at 3 rmsd) in purple (negative)
and green (positive)

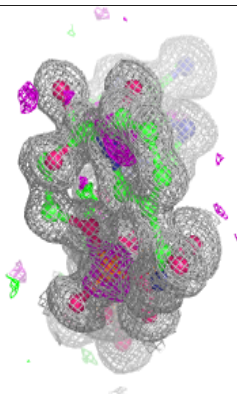
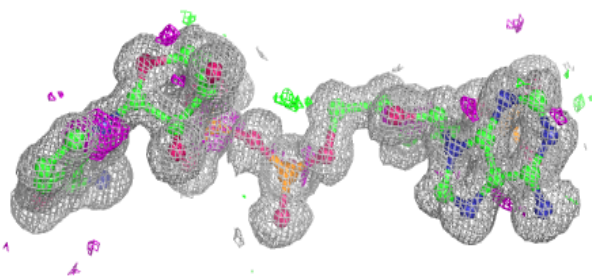
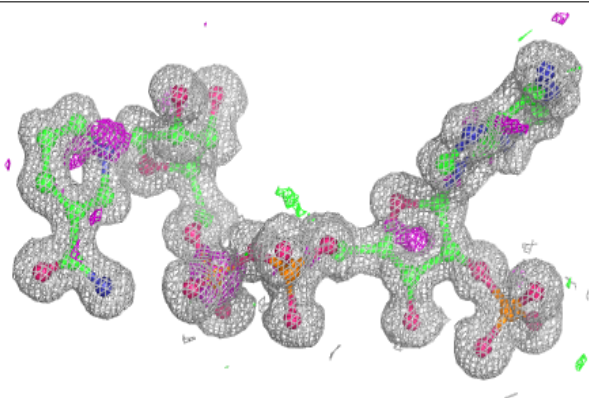


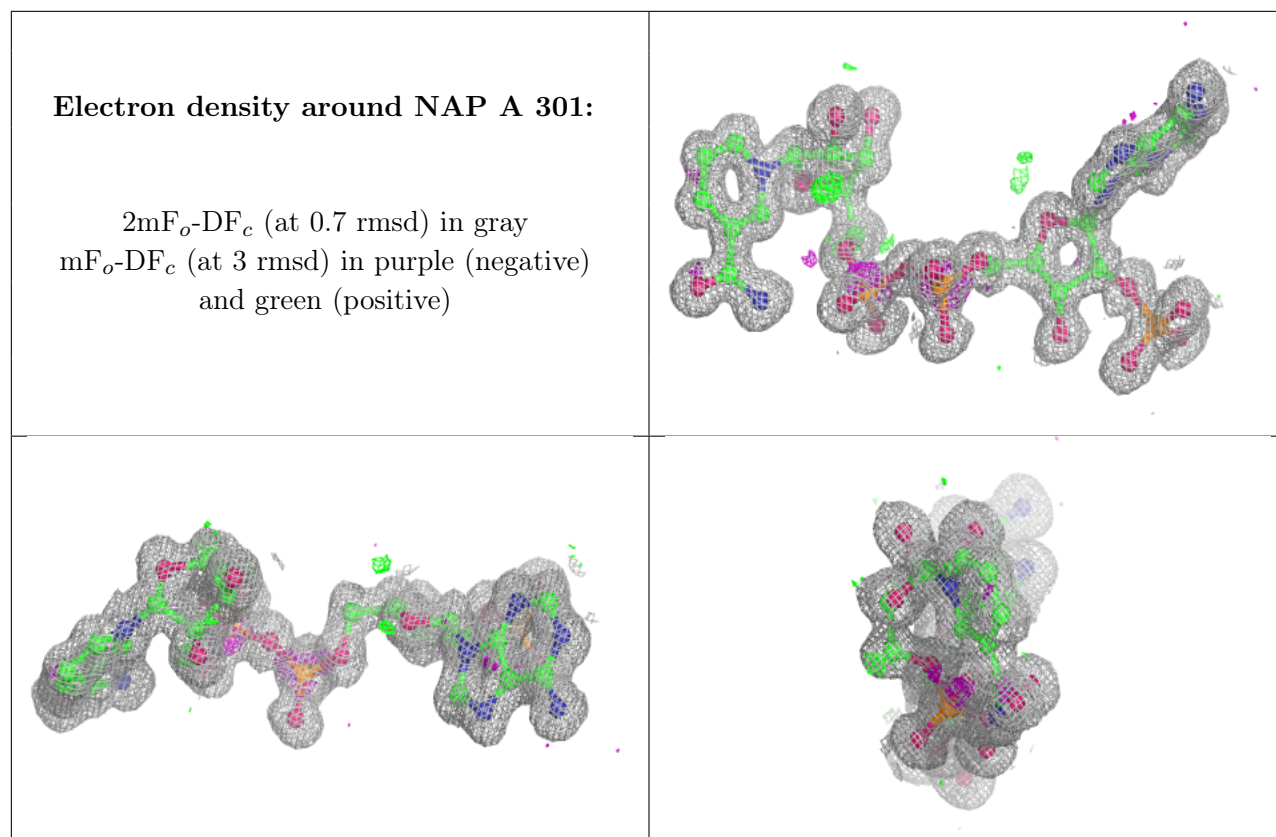
Electron density around NAP D 301:

$2mF_o-DF_c$ (at 0.7 rmsd) in gray
 mF_o-DF_c (at 3 rmsd) in purple (negative)
and green (positive)

**Electron density around NAP B 301:**

$2mF_o-DF_c$ (at 0.7 rmsd) in gray
 mF_o-DF_c (at 3 rmsd) in purple (negative)
and green (positive)





6.5 Other polymers [i](#)

There are no such residues in this entry.