



Full wwPDB X-ray Structure Validation Report ⓘ

Oct 2, 2023 – 02:34 PM EDT

PDB ID : 6NWV
Title : Insulin Lispro Analog
Authors : Cruz-Rangel, A.; Romero, A.; Reyes-Grajeda, J.P.
Deposited on : 2019-02-07
Resolution : 1.60 Å(reported)

This is a Full wwPDB X-ray Structure Validation Report for a publicly released PDB entry.

We welcome your comments at validation@mail.wwpdb.org

A user guide is available at

<https://www.wwpdb.org/validation/2017/XrayValidationReportHelp>

with specific help available everywhere you see the ⓘ symbol.

The types of validation reports are described at

<http://www.wwpdb.org/validation/2017/FAQs#types>.

The following versions of software and data (see [references ⓘ](#)) were used in the production of this report:

MolProbity : **FAILED**
Mogul : 1.8.5 (274361), CSD as541be (2020)
Xtrriage (Phenix) : 1.13
EDS : **FAILED**
Percentile statistics : 20191225.v01 (using entries in the PDB archive December 25th 2019)
Ideal geometry (proteins) : Engh & Huber (2001)
Ideal geometry (DNA, RNA) : Parkinson et al. (1996)
Validation Pipeline (wwPDB-VP) : 2.35.1

1 Overall quality at a glance

The following experimental techniques were used to determine the structure:

X-RAY DIFFRACTION

The reported resolution of this entry is 1.60 Å.

There are no overall percentile quality scores available for this entry.

MolProbity and EDS failed to run properly - the sequence quality summary graphics cannot be shown.

2 Entry composition i

There are 7 unique types of molecules in this entry. The entry contains 2542 atoms, of which 0 are hydrogens and 0 are deuteriums.

In the tables below, the ZeroOcc column contains the number of atoms modelled with zero occupancy, the AltConf column contains the number of residues with at least one atom in alternate conformation and the Trace column contains the number of residues modelled with at most 2 atoms.

- Molecule 1 is a protein called Insulin A chain.

Mol	Chain	Residues	Atoms					ZeroOcc	AltConf	Trace
			Total	C	N	O	S			
1	A	21	Total 161	C 99	N 25	O 33	S 4	0	0	0
1	C	21	Total 163	C 99	N 25	O 35	S 4	0	2	0
1	E	21	Total 160	C 97	N 25	O 34	S 4	0	0	0
1	G	21	Total 171	C 104	N 27	O 36	S 4	0	1	0
1	I	21	Total 163	C 99	N 25	O 35	S 4	0	0	0
1	K	21	Total 150	C 93	N 23	O 30	S 4	0	0	0

- Molecule 2 is a protein called Insulin Lispro B chain.

Mol	Chain	Residues	Atoms					ZeroOcc	AltConf	Trace
			Total	C	N	O	S			
2	B	28	Total 218	C 141	N 37	O 38	S 2	0	0	1
2	D	30	Total 239	C 155	N 40	O 42	S 2	0	1	1
2	F	30	Total 233	C 151	N 40	O 40	S 2	0	1	1
2	H	30	Total 244	C 163	N 41	O 38	S 2	0	2	1
2	J	26	Total 211	C 139	N 35	O 35	S 2	0	2	0
2	L	30	Total 237	C 155	N 40	O 40	S 2	0	0	0

There are 12 discrepancies between the modelled and reference sequences:

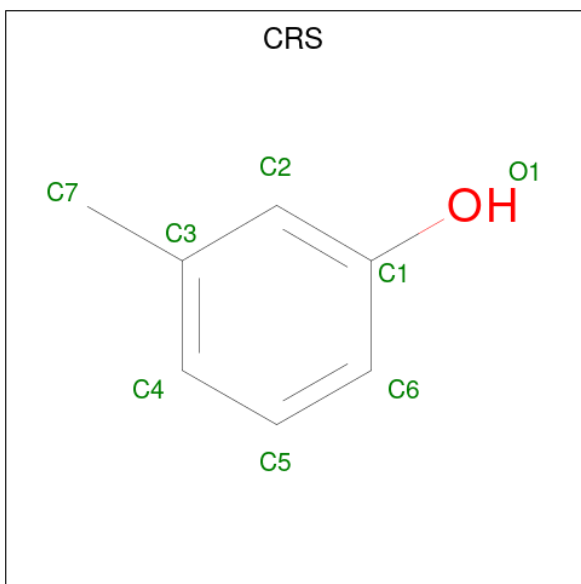
Chain	Residue	Modelled	Actual	Comment	Reference
B	28	LYS	PRO	engineered mutation	UNP P01308

Continued on next page...

Continued from previous page...

Chain	Residue	Modelled	Actual	Comment	Reference
B	29	PRO	LYS	engineered mutation	UNP P01308
D	28	LYS	PRO	engineered mutation	UNP P01308
D	29	PRO	LYS	engineered mutation	UNP P01308
F	28	LYS	PRO	engineered mutation	UNP P01308
F	29	PRO	LYS	engineered mutation	UNP P01308
H	28	LYS	PRO	engineered mutation	UNP P01308
H	29	PRO	LYS	engineered mutation	UNP P01308
J	28	LYS	PRO	engineered mutation	UNP P01308
J	29	PRO	LYS	engineered mutation	UNP P01308
L	28	LYS	PRO	engineered mutation	UNP P01308
L	29	PRO	LYS	engineered mutation	UNP P01308

- Molecule 3 is M-CRESOL (three-letter code: CRS) (formula: C₇H₈O).



Mol	Chain	Residues	Atoms	ZeroOcc	AltConf
3	A	1	Total C O 8 7 1	0	0
3	C	1	Total C O 8 7 1	0	0
3	E	1	Total C O 8 7 1	0	0
3	G	1	Total C O 8 7 1	0	0
3	G	1	Total C O 8 7 1	0	0
3	I	1	Total C O 8 7 1	0	0

Continued on next page...

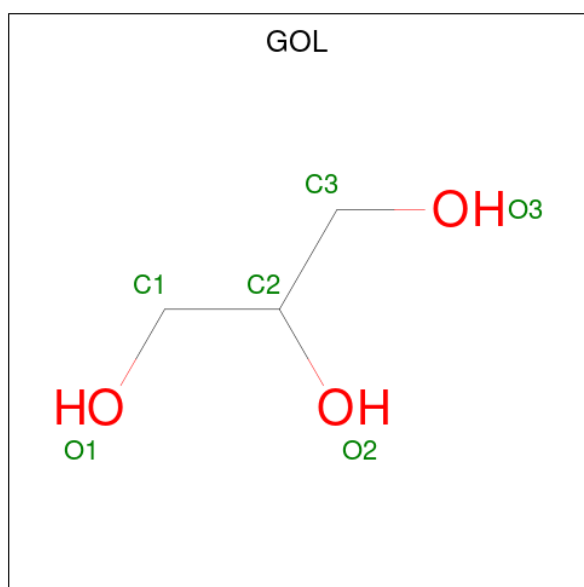
Continued from previous page...

Mol	Chain	Residues	Atoms			ZeroOcc	AltConf
3	K	1	Total	C	O	0	0
			8	7	1		

- Molecule 4 is ZINC ION (three-letter code: ZN) (formula: Zn).

Mol	Chain	Residues	Atoms		ZeroOcc	AltConf
4	B	1	Total	Zn	0	0
			1	1		
4	F	1	Total	Zn	0	0
			1	1		

- Molecule 5 is GLYCEROL (three-letter code: GOL) (formula: C₃H₈O₃).



Mol	Chain	Residues	Atoms			ZeroOcc	AltConf
5	D	1	Total	C	O	0	0
			6	3	3		
5	F	1	Total	C	O	0	0
			6	3	3		

- Molecule 6 is CHLORIDE ION (three-letter code: CL) (formula: Cl).

Mol	Chain	Residues	Atoms		ZeroOcc	AltConf
6	J	1	Total	Cl	0	0
			1	1		
6	L	1	Total	Cl	0	0
			1	1		

- Molecule 7 is water.

Mol	Chain	Residues	Atoms	ZeroOcc	AltConf
7	A	13	Total O 13 13	0	0
7	B	9	Total O 9 9	0	0
7	C	13	Total O 13 13	0	0
7	D	13	Total O 13 13	0	0
7	E	11	Total O 11 11	0	0
7	F	11	Total O 11 11	0	0
7	G	5	Total O 5 5	0	0
7	H	15	Total O 15 15	0	0
7	I	7	Total O 7 7	0	0
7	J	8	Total O 8 8	0	0
7	K	3	Total O 3 3	0	0
7	L	12	Total O 12 12	0	0

MolProbity and EDS failed to run properly - this section is therefore empty.

3 Data and refinement statistics i

EDS failed to run properly - this section is therefore incomplete.

Property	Value	Source
Space group	P 1 21 1	Depositor
Cell constants a, b, c, α , β , γ	46.16Å 61.79Å 58.62Å 90.00° 111.46° 90.00°	Depositor
Resolution (Å)	42.96 – 1.60	Depositor
% Data completeness (in resolution range)	99.2 (42.96-1.60)	Depositor
R_{merge}	0.10	Depositor
R_{sym}	(Not available)	Depositor
$\langle I/\sigma(I) \rangle$ ¹	1.34 (at 1.60Å)	Xtrriage
Refinement program	REFMAC 5.8.0238	Depositor
R, R_{free}	0.208 , 0.257	Depositor
Wilson B-factor (Å ²)	26.5	Xtrriage
Anisotropy	0.222	Xtrriage
L-test for twinning ²	$\langle L \rangle = 0.49$, $\langle L^2 \rangle = 0.33$	Xtrriage
Estimated twinning fraction	0.030 for h,-k,-h-l	Xtrriage
Total number of atoms	2542	wwPDB-VP
Average B, all atoms (Å ²)	35.0	wwPDB-VP

Xtrriage's analysis on translational NCS is as follows: *The largest off-origin peak in the Patterson function is 7.08% of the height of the origin peak. No significant pseudotranslation is detected.*

¹Intensities estimated from amplitudes.

²Theoretical values of $\langle |L| \rangle$, $\langle L^2 \rangle$ for acentric reflections are 0.5, 0.333 respectively for untwinned datasets, and 0.375, 0.2 for perfectly twinned datasets.

4 Model quality [i](#)

4.1 Standard geometry [i](#)

MolProbity failed to run properly - this section is therefore empty.

4.2 Too-close contacts [i](#)

MolProbity failed to run properly - this section is therefore empty.

4.3 Torsion angles [i](#)

4.3.1 Protein backbone [i](#)

MolProbity failed to run properly - this section is therefore empty.

4.3.2 Protein sidechains [i](#)

MolProbity failed to run properly - this section is therefore empty.

4.3.3 RNA [i](#)

MolProbity failed to run properly - this section is therefore empty.

4.4 Non-standard residues in protein, DNA, RNA chains [i](#)

There are no non-standard protein/DNA/RNA residues in this entry.

4.5 Carbohydrates [i](#)

There are no monosaccharides in this entry.

4.6 Ligand geometry [i](#)

Of 13 ligands modelled in this entry, 4 are monoatomic - leaving 9 for Mogul analysis.

In the following table, the Counts columns list the number of bonds (or angles) for which Mogul statistics could be retrieved, the number of bonds (or angles) that are observed in the model and the number of bonds (or angles) that are defined in the Chemical Component Dictionary. The Link column lists molecule types, if any, to which the group is linked. The Z score for a bond

length (or angle) is the number of standard deviations the observed value is removed from the expected value. A bond length (or angle) with $|Z| > 2$ is considered an outlier worth inspection. RMSZ is the root-mean-square of all Z scores of the bond lengths (or angles).

Mol	Type	Chain	Res	Link	Bond lengths			Bond angles		
					Counts	RMSZ	# Z > 2	Counts	RMSZ	# Z > 2
3	CRS	E	101	-	8,8,8	0.31	0	10,10,10	0.33	0
3	CRS	I	101	-	8,8,8	0.27	0	10,10,10	0.42	0
3	CRS	G	102	-	8,8,8	0.38	0	10,10,10	0.40	0
3	CRS	C	101	-	8,8,8	0.41	0	10,10,10	0.40	0
3	CRS	A	101	-	8,8,8	0.49	0	10,10,10	0.34	0
3	CRS	G	101	-	8,8,8	0.43	0	10,10,10	0.47	0
3	CRS	K	101	-	8,8,8	0.54	0	10,10,10	0.38	0
5	GOL	D	101	-	5,5,5	0.17	0	5,5,5	0.39	0
5	GOL	F	102	-	5,5,5	0.16	0	5,5,5	0.33	0

In the following table, the Chirals column lists the number of chiral outliers, the number of chiral centers analysed, the number of these observed in the model and the number defined in the Chemical Component Dictionary. Similar counts are reported in the Torsion and Rings columns. '-' means no outliers of that kind were identified.

Mol	Type	Chain	Res	Link	Chirals	Torsions	Rings
3	CRS	E	101	-	-	-	0/1/1/1
3	CRS	I	101	-	-	-	0/1/1/1
3	CRS	G	102	-	-	-	0/1/1/1
3	CRS	C	101	-	-	-	0/1/1/1
3	CRS	A	101	-	-	-	0/1/1/1
3	CRS	G	101	-	-	-	0/1/1/1
3	CRS	K	101	-	-	-	0/1/1/1
5	GOL	D	101	-	-	3/4/4/4	-
5	GOL	F	102	-	-	0/4/4/4	-

There are no bond length outliers.

There are no bond angle outliers.

There are no chirality outliers.

All (3) torsion outliers are listed below:

Mol	Chain	Res	Type	Atoms
5	D	101	GOL	C1-C2-C3-O3
5	D	101	GOL	O2-C2-C3-O3
5	D	101	GOL	O1-C1-C2-O2

There are no ring outliers.

No monomer is involved in short contacts.

4.7 Other polymers [i](#)

There are no such residues in this entry.

4.8 Polymer linkage issues [i](#)

There are no chain breaks in this entry.

5 Fit of model and data [i](#)

5.1 Protein, DNA and RNA chains [i](#)

EDS failed to run properly - this section is therefore empty.

5.2 Non-standard residues in protein, DNA, RNA chains [i](#)

EDS failed to run properly - this section is therefore empty.

5.3 Carbohydrates [i](#)

EDS failed to run properly - this section is therefore empty.

5.4 Ligands [i](#)

EDS failed to run properly - this section is therefore empty.

5.5 Other polymers [i](#)

EDS failed to run properly - this section is therefore empty.