



Full wwPDB X-ray Structure Validation Report ⓘ

Nov 16, 2023 – 03:18 AM JST

PDB ID : 6KM9
Title : Crystal structure of SucA from *Vibrio vulnificus*
Authors : Seo, P.W.; Kim, J.S.
Deposited on : 2019-07-31
Resolution : 2.72 Å(reported)

This is a Full wwPDB X-ray Structure Validation Report for a publicly released PDB entry.

We welcome your comments at validation@mail.wwpdb.org

A user guide is available at

<https://www.wwpdb.org/validation/2017/XrayValidationReportHelp>

with specific help available everywhere you see the ⓘ symbol.

The types of validation reports are described at

<http://www.wwpdb.org/validation/2017/FAQs#types>.

The following versions of software and data (see [references ⓘ](#)) were used in the production of this report:

MolProbity : 4.02b-467
Mogul : 1.8.5 (274361), CSD as541be (2020)
Xtriage (Phenix) : 1.13
EDS : 2.36
buster-report : 1.1.7 (2018)
Percentile statistics : 20191225.v01 (using entries in the PDB archive December 25th 2019)
Refmac : 5.8.0158
CCP4 : 7.0.044 (Gargrove)
Ideal geometry (proteins) : Engh & Huber (2001)
Ideal geometry (DNA, RNA) : Parkinson et al. (1996)
Validation Pipeline (wwPDB-VP) : 2.36

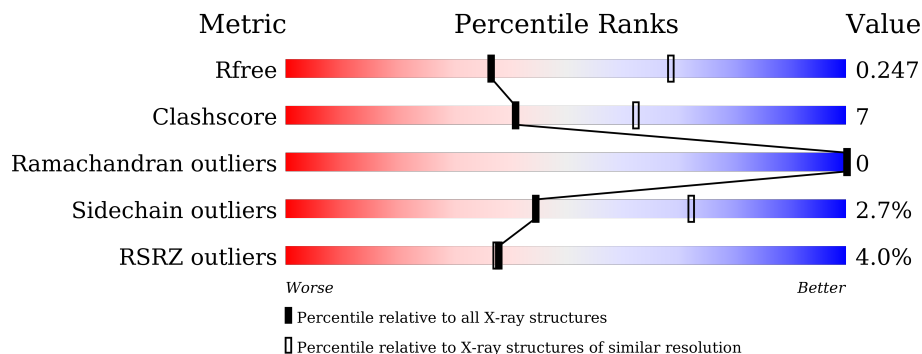
1 Overall quality at a glance

The following experimental techniques were used to determine the structure:

X-RAY DIFFRACTION

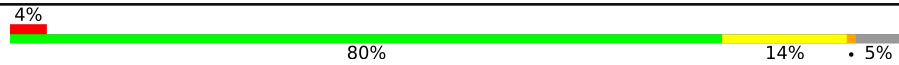

The reported resolution of this entry is 2.72 Å.

Percentile scores (ranging between 0-100) for global validation metrics of the entry are shown in the following graphic. The table shows the number of entries on which the scores are based.



Metric	Whole archive (#Entries)	Similar resolution (#Entries, resolution range(Å))
R_{free}	130704	3359 (2.74-2.70)
Clashscore	141614	3686 (2.74-2.70)
Ramachandran outliers	138981	3622 (2.74-2.70)
Sidechain outliers	138945	3623 (2.74-2.70)
RSRZ outliers	127900	3276 (2.74-2.70)

The table below summarises the geometric issues observed across the polymeric chains and their fit to the electron density. The red, orange, yellow and green segments of the lower bar indicate the fraction of residues that contain outliers for ≥ 3 , 2, 1 and 0 types of geometric quality criteria respectively. A grey segment represents the fraction of residues that are not modelled. The numeric value for each fraction is indicated below the corresponding segment, with a dot representing fractions $\leq 5\%$. The upper red bar (where present) indicates the fraction of residues that have poor fit to the electron density. The numeric value is given above the bar.

Mol	Chain	Length	Quality of chain
1	A	886	 4% 80% 14% • 5%
1	B	886	 4% 80% 15% • 5%

2 Entry composition i

There are 6 unique types of molecules in this entry. The entry contains 13577 atoms, of which 0 are hydrogens and 0 are deuteriums.

In the tables below, the ZeroOcc column contains the number of atoms modelled with zero occupancy, the AltConf column contains the number of residues with at least one atom in alternate conformation and the Trace column contains the number of residues modelled with at most 2 atoms.

- Molecule 1 is a protein called Oxoglutarate dehydrogenase (Succinyl-transferring), E1 component.

Mol	Chain	Residues	Atoms					ZeroOcc	AltConf	Trace
			Total	C	N	O	S			
1	A	844	6669	4199	1178	1254	38	0	0	0
1	B	845	6676	4204	1179	1255	38	0	0	0

There are 58 discrepancies between the modelled and reference sequences:

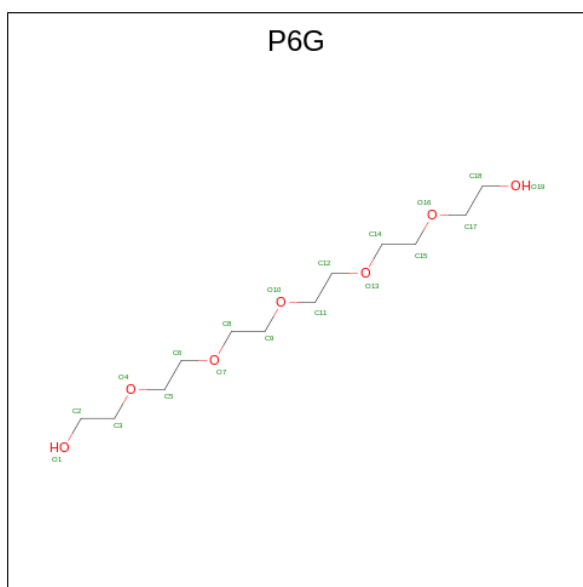
Chain	Residue	Modelled	Actual	Comment	Reference
A	56	MET	-	initiating methionine	UNP A0A3Q0L1E1
A	57	GLY	-	expression tag	UNP A0A3Q0L1E1
A	58	SER	-	expression tag	UNP A0A3Q0L1E1
A	59	SER	-	expression tag	UNP A0A3Q0L1E1
A	60	HIS	-	expression tag	UNP A0A3Q0L1E1
A	61	HIS	-	expression tag	UNP A0A3Q0L1E1
A	62	HIS	-	expression tag	UNP A0A3Q0L1E1
A	63	HIS	-	expression tag	UNP A0A3Q0L1E1
A	64	HIS	-	expression tag	UNP A0A3Q0L1E1
A	65	HIS	-	expression tag	UNP A0A3Q0L1E1
A	66	ASP	-	expression tag	UNP A0A3Q0L1E1
A	67	TYR	-	expression tag	UNP A0A3Q0L1E1
A	68	ASP	-	expression tag	UNP A0A3Q0L1E1
A	69	ILE	-	expression tag	UNP A0A3Q0L1E1
A	70	PRO	-	expression tag	UNP A0A3Q0L1E1
A	71	THR	-	expression tag	UNP A0A3Q0L1E1
A	72	THR	-	expression tag	UNP A0A3Q0L1E1
A	73	GLU	-	expression tag	UNP A0A3Q0L1E1
A	74	ASN	-	expression tag	UNP A0A3Q0L1E1
A	75	LEU	-	expression tag	UNP A0A3Q0L1E1
A	76	TYR	-	expression tag	UNP A0A3Q0L1E1
A	77	PHE	-	expression tag	UNP A0A3Q0L1E1
A	78	GLN	-	expression tag	UNP A0A3Q0L1E1
A	79	GLY	-	expression tag	UNP A0A3Q0L1E1

Continued on next page...

Continued from previous page...

Chain	Residue	Modelled	Actual	Comment	Reference
A	80	GLY	-	expression tag	UNP A0A3Q0L1E1
A	81	GLY	-	expression tag	UNP A0A3Q0L1E1
A	82	GLY	-	expression tag	UNP A0A3Q0L1E1
A	83	GLY	-	expression tag	UNP A0A3Q0L1E1
A	84	GLY	-	expression tag	UNP A0A3Q0L1E1
B	56	MET	-	initiating methionine	UNP A0A3Q0L1E1
B	57	GLY	-	expression tag	UNP A0A3Q0L1E1
B	58	SER	-	expression tag	UNP A0A3Q0L1E1
B	59	SER	-	expression tag	UNP A0A3Q0L1E1
B	60	HIS	-	expression tag	UNP A0A3Q0L1E1
B	61	HIS	-	expression tag	UNP A0A3Q0L1E1
B	62	HIS	-	expression tag	UNP A0A3Q0L1E1
B	63	HIS	-	expression tag	UNP A0A3Q0L1E1
B	64	HIS	-	expression tag	UNP A0A3Q0L1E1
B	65	HIS	-	expression tag	UNP A0A3Q0L1E1
B	66	ASP	-	expression tag	UNP A0A3Q0L1E1
B	67	TYR	-	expression tag	UNP A0A3Q0L1E1
B	68	ASP	-	expression tag	UNP A0A3Q0L1E1
B	69	ILE	-	expression tag	UNP A0A3Q0L1E1
B	70	PRO	-	expression tag	UNP A0A3Q0L1E1
B	71	THR	-	expression tag	UNP A0A3Q0L1E1
B	72	THR	-	expression tag	UNP A0A3Q0L1E1
B	73	GLU	-	expression tag	UNP A0A3Q0L1E1
B	74	ASN	-	expression tag	UNP A0A3Q0L1E1
B	75	LEU	-	expression tag	UNP A0A3Q0L1E1
B	76	TYR	-	expression tag	UNP A0A3Q0L1E1
B	77	PHE	-	expression tag	UNP A0A3Q0L1E1
B	78	GLN	-	expression tag	UNP A0A3Q0L1E1
B	79	GLY	-	expression tag	UNP A0A3Q0L1E1
B	80	GLY	-	expression tag	UNP A0A3Q0L1E1
B	81	GLY	-	expression tag	UNP A0A3Q0L1E1
B	82	GLY	-	expression tag	UNP A0A3Q0L1E1
B	83	GLY	-	expression tag	UNP A0A3Q0L1E1
B	84	GLY	-	expression tag	UNP A0A3Q0L1E1

- Molecule 2 is HEXAETHYLENE GLYCOL (three-letter code: P6G) (formula: C₁₂H₂₆O₇).

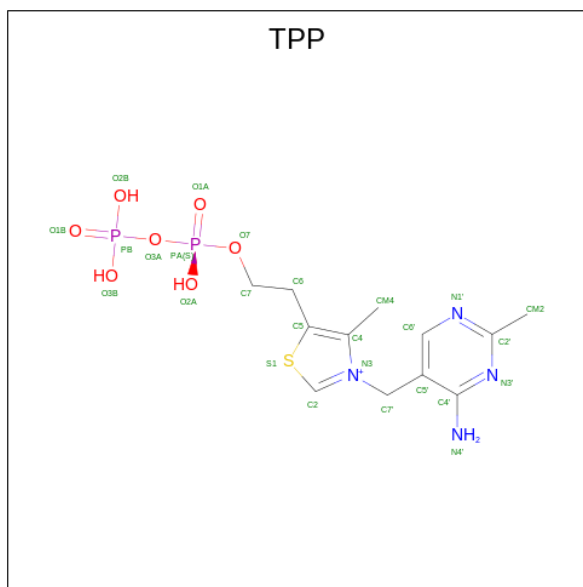


Mol	Chain	Residues	Atoms	ZeroOcc	AltConf
2	A	1	Total C O 19 12 7	0	0
2	B	1	Total C O 19 12 7	0	0

- Molecule 3 is MAGNESIUM ION (three-letter code: MG) (formula: Mg) (labeled as "Ligand of Interest" by depositor).

Mol	Chain	Residues	Atoms	ZeroOcc	AltConf
3	A	1	Total Mg 1 1	0	0
3	B	1	Total Mg 1 1	0	0

- Molecule 4 is THIAMINE DIPHOSPHATE (three-letter code: TPP) (formula: C₁₂H₁₉N₄O₇P₂S) (labeled as "Ligand of Interest" by depositor).



Mol	Chain	Residues	Atoms					ZeroOcc	AltConf	
			Total	C	N	O	P			S
4	A	1	26	12	4	7	2	1	0	0
4	B	1	26	12	4	7	2	1	0	0

- Molecule 5 is CALCIUM ION (three-letter code: CA) (formula: Ca).

Mol	Chain	Residues	Atoms		ZeroOcc	AltConf
			Total	Ca		
5	A	1	1	1	0	0

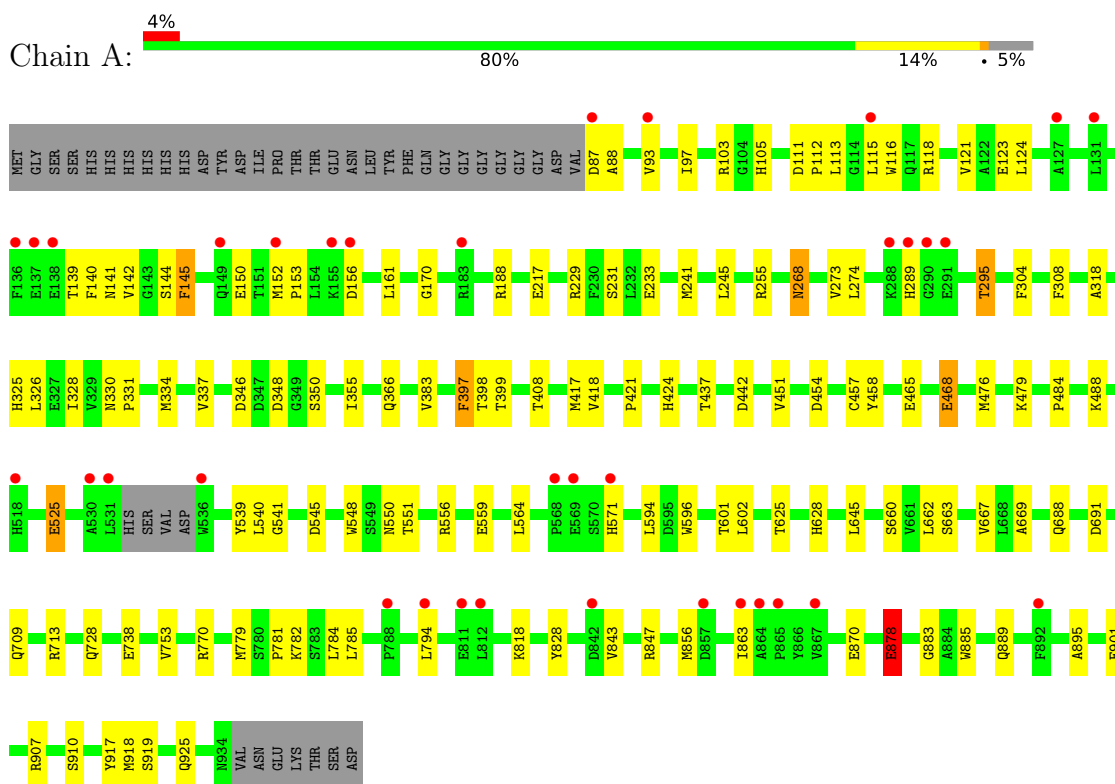
- Molecule 6 is water.

Mol	Chain	Residues	Atoms		ZeroOcc	AltConf
			Total	O		
6	A	70	70	70	0	0
6	B	69	69	69	0	0

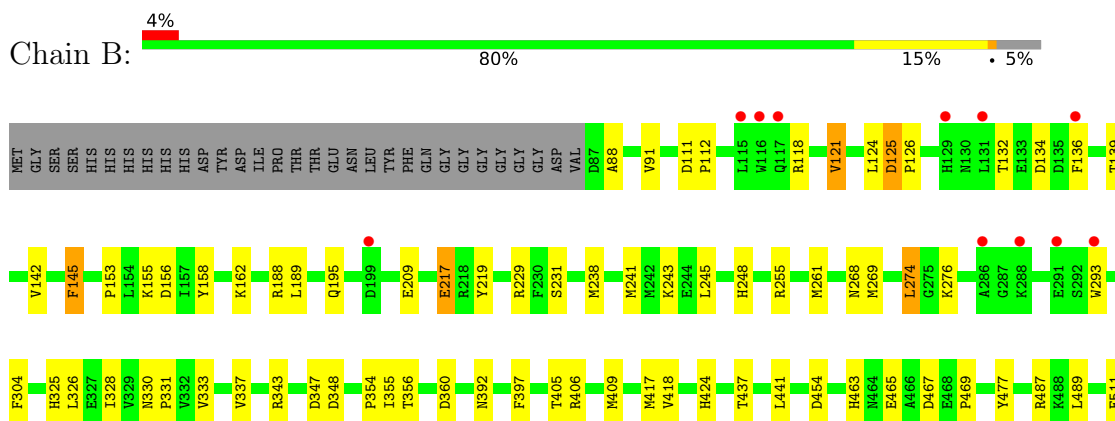
3 Residue-property plots [i](#)

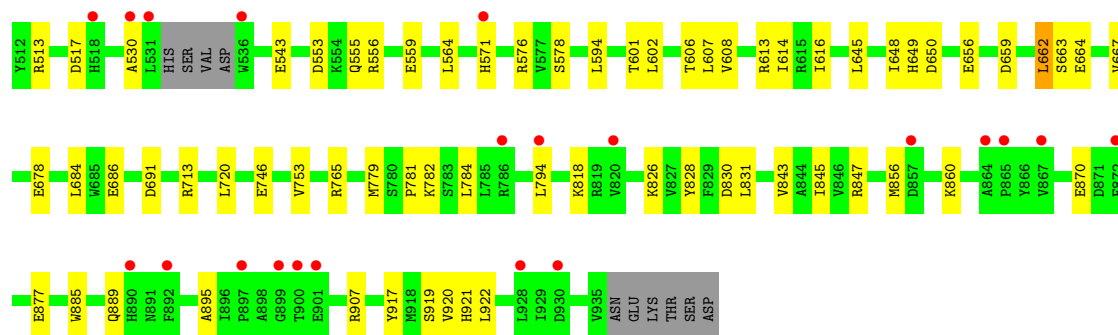
These plots are drawn for all protein, RNA, DNA and oligosaccharide chains in the entry. The first graphic for a chain summarises the proportions of the various outlier classes displayed in the second graphic. The second graphic shows the sequence view annotated by issues in geometry and electron density. Residues are color-coded according to the number of geometric quality criteria for which they contain at least one outlier: green = 0, yellow = 1, orange = 2 and red = 3 or more. A red dot above a residue indicates a poor fit to the electron density ($RSRZ > 2$). Stretches of 2 or more consecutive residues without any outlier are shown as a green connector. Residues present in the sample, but not in the model, are shown in grey.

- Molecule 1: Oxoglutarate dehydrogenase (Succinyl-transferring), E1 component



- Molecule 1: Oxoglutarate dehydrogenase (Succinyl-transferring), E1 component





4 Data and refinement statistics

Property	Value	Source
Space group	P 1 21 1	Depositor
Cell constants a, b, c, α , β , γ	84.27Å 76.71Å 144.58Å 90.00° 100.56° 90.00°	Depositor
Resolution (Å)	47.38 – 2.72 47.38 – 2.72	Depositor EDS
% Data completeness (in resolution range)	98.2 (47.38-2.72) 98.2 (47.38-2.72)	Depositor EDS
R_{merge}	(Not available)	Depositor
R_{sym}	(Not available)	Depositor
$\langle I/\sigma(I) \rangle$ ¹	1.34 (at 2.73Å)	Xtrriage
Refinement program	PHENIX 1.12_2829	Depositor
R, R_{free}	0.192 , 0.249 0.192 , 0.247	Depositor DCC
R_{free} test set	1916 reflections (4.00%)	wwPDB-VP
Wilson B-factor (Å ²)	41.8	Xtrriage
Anisotropy	0.554	Xtrriage
Bulk solvent k_{sol} (e/Å ³), B_{sol} (Å ²)	0.38 , 43.5	EDS
L-test for twinning ²	$\langle L \rangle = 0.47$, $\langle L^2 \rangle = 0.30$	Xtrriage
Estimated twinning fraction	No twinning to report.	Xtrriage
F_o, F_c correlation	0.93	EDS
Total number of atoms	13577	wwPDB-VP
Average B, all atoms (Å ²)	43.0	wwPDB-VP

Xtrriage's analysis on translational NCS is as follows: *The largest off-origin peak in the Patterson function is 3.56% of the height of the origin peak. No significant pseudotranslation is detected.*

¹Intensities estimated from amplitudes.

²Theoretical values of $\langle |L| \rangle$, $\langle L^2 \rangle$ for acentric reflections are 0.5, 0.333 respectively for untwinned datasets, and 0.375, 0.2 for perfectly twinned datasets.

5 Model quality [i](#)

5.1 Standard geometry [i](#)

Bond lengths and bond angles in the following residue types are not validated in this section: CA, P6G, MG, TPP

The Z score for a bond length (or angle) is the number of standard deviations the observed value is removed from the expected value. A bond length (or angle) with $|Z| > 5$ is considered an outlier worth inspection. RMSZ is the root-mean-square of all Z scores of the bond lengths (or angles).

Mol	Chain	Bond lengths		Bond angles	
		RMSZ	# Z >5	RMSZ	# Z >5
1	A	0.56	3/6826 (0.0%)	0.59	1/9254 (0.0%)
1	B	0.51	0/6833	0.57	1/9264 (0.0%)
All	All	0.54	3/13659 (0.0%)	0.58	2/18518 (0.0%)

Chiral center outliers are detected by calculating the chiral volume of a chiral center and verifying if the center is modelled as a planar moiety or with the opposite hand. A planarity outlier is detected by checking planarity of atoms in a peptide group, atoms in a mainchain group or atoms of a sidechain that are expected to be planar.

Mol	Chain	#Chirality outliers	#Planarity outliers
1	A	0	1
1	B	0	1
All	All	0	2

All (3) bond length outliers are listed below:

Mol	Chain	Res	Type	Atoms	Z	Observed(Å)	Ideal(Å)
1	A	878	GLU	CD-OE1	-6.67	1.18	1.25
1	A	878	GLU	CD-OE2	-5.30	1.19	1.25
1	A	458	TYR	CE1-CZ	-5.16	1.31	1.38

All (2) bond angle outliers are listed below:

Mol	Chain	Res	Type	Atoms	Z	Observed(°)	Ideal(°)
1	B	348	ASP	CB-CG-OD1	5.65	123.38	118.30
1	A	878	GLU	OE1-CD-OE2	-5.19	117.07	123.30

There are no chirality outliers.

All (2) planarity outliers are listed below:

Mol	Chain	Res	Type	Group
1	A	325	HIS	Peptide
1	B	325	HIS	Peptide

5.2 Too-close contacts [i](#)

In the following table, the Non-H and H(model) columns list the number of non-hydrogen atoms and hydrogen atoms in the chain respectively. The H(added) column lists the number of hydrogen atoms added and optimized by MolProbity. The Clashes column lists the number of clashes within the asymmetric unit, whereas Symm-Clashes lists symmetry-related clashes.

Mol	Chain	Non-H	H(model)	H(added)	Clashes	Symm-Clashes
1	A	6669	0	6477	87	0
1	B	6676	0	6486	102	0
2	A	19	0	26	2	0
2	B	19	0	26	2	0
3	A	1	0	0	0	0
3	B	1	0	0	0	0
4	A	26	0	16	4	0
4	B	26	0	16	2	0
5	A	1	0	0	0	0
6	A	70	0	0	13	0
6	B	69	0	0	26	0
All	All	13577	0	13047	187	0

The all-atom clashscore is defined as the number of clashes found per 1000 atoms (including hydrogen atoms). The all-atom clashscore for this structure is 7.

All (187) close contacts within the same asymmetric unit are listed below, sorted by their clash magnitude.

Atom-1	Atom-2	Interatomic distance (Å)	Clash overlap (Å)
1:B:238:MET:CE	1:B:269:MET:HE2	1.85	1.06
1:B:238:MET:HE1	1:B:269:MET:CE	1.86	1.05
1:B:238:MET:CE	1:B:269:MET:CE	2.44	0.96
1:B:238:MET:HE1	1:B:269:MET:HE2	1.42	0.95
1:A:346:ASP:OD1	6:A:1102:HOH:O	1.90	0.89
1:B:530:ALA:O	6:B:1101:HOH:O	1.93	0.86
1:B:217:GLU:HG3	1:B:229:ARG:HE	1.40	0.86
1:B:189:LEU:O	6:B:1102:HOH:O	1.94	0.84
1:A:103:ARG:NH1	1:A:123:GLU:OE1	2.11	0.83
1:A:551:THR:OG1	6:A:1103:HOH:O	1.97	0.83
1:B:405:THR:O	6:B:1105:HOH:O	1.98	0.82

Continued on next page...

Continued from previous page...

Atom-1	Atom-2	Interatomic distance (Å)	Clash overlap (Å)
1:B:656:GLU:OE1	6:B:1104:HOH:O	1.97	0.81
1:B:238:MET:HE1	1:B:269:MET:HE3	1.65	0.78
1:B:543:GLU:OE2	6:B:1106:HOH:O	2.01	0.78
1:B:555:GLN:N	6:B:1103:HOH:O	2.16	0.78
1:B:121:VAL:CG2	1:B:124:LEU:HG	2.14	0.77
1:A:289:HIS:NE2	6:A:1106:HOH:O	2.18	0.75
1:A:105:HIS:O	1:A:118:ARG:NH1	2.20	0.74
1:A:399:THR:OG1	6:A:1101:HOH:O	1.85	0.73
1:B:347:ASP:O	6:B:1108:HOH:O	2.06	0.71
1:B:826:LYS:NZ	1:B:877:GLU:OE2	2.24	0.69
1:A:468:GLU:HG3	1:B:576:ARG:HE	1.56	0.69
1:B:304:PHE:HA	2:B:1001:P6G:H141	1.77	0.67
1:A:233:GLU:OE1	6:A:1105:HOH:O	2.12	0.67
1:B:511:GLU:OE1	6:B:1110:HOH:O	2.13	0.67
1:A:465:GLU:N	1:A:465:GLU:OE1	2.29	0.65
1:B:121:VAL:HG21	1:B:124:LEU:HG	1.79	0.65
1:B:118:ARG:HB3	6:B:1107:HOH:O	1.97	0.65
1:A:468:GLU:HG2	1:B:576:ARG:HH21	1.62	0.64
1:A:273:VAL:HG22	1:A:274:LEU:HD12	1.78	0.64
1:A:115:LEU:HD11	1:A:476:MET:HA	1.80	0.63
1:A:255:ARG:NH1	6:A:1112:HOH:O	2.32	0.63
1:B:132:THR:OG1	1:B:134:ASP:OD1	2.13	0.63
1:B:217:GLU:HG3	1:B:229:ARG:NE	2.14	0.63
1:A:217:GLU:HG3	1:A:229:ARG:HE	1.65	0.62
1:A:318:ALA:HB1	2:A:1001:P6G:H121	1.82	0.62
1:A:348:ASP:O	1:A:350:SER:N	2.31	0.62
1:B:142:VAL:HB	1:B:145:PHE:HB3	1.81	0.62
1:B:424:HIS:HA	1:B:454:ASP:HB3	1.82	0.61
1:B:463:HIS:ND1	6:B:1109:HOH:O	2.08	0.61
1:B:860:LYS:NZ	6:B:1118:HOH:O	2.26	0.61
1:A:781:PRO:HB2	1:A:784:LEU:HB2	1.82	0.60
1:A:326:LEU:H	4:A:1003:TPP:HM21	1.65	0.60
1:B:88:ALA:N	6:B:1120:HOH:O	2.34	0.60
1:B:830:ASP:OD2	6:B:1111:HOH:O	2.16	0.59
1:A:274:LEU:HD22	1:A:304:PHE:HB3	1.84	0.58
1:A:337:VAL:HG23	1:A:383:VAL:HG11	1.85	0.58
1:A:139:THR:HA	1:A:153:PRO:HA	1.86	0.57
1:B:917:TYR:HB2	1:B:920:VAL:HG23	1.88	0.56
1:B:856:MET:HE3	1:B:895:ALA:HA	1.88	0.55
1:B:828:TYR:CD1	1:B:847:ARG:HD2	2.40	0.55
1:A:308:PHE:CZ	1:A:525:GLU:HG3	2.40	0.55

Continued on next page...

Continued from previous page...

Atom-1	Atom-2	Interatomic distance (Å)	Clash overlap (Å)
1:A:828:TYR:CG	1:A:847:ARG:HD2	2.41	0.55
1:B:88:ALA:O	1:B:91:VAL:HG12	2.07	0.55
1:A:484:PRO:HA	6:A:1130:HOH:O	2.06	0.55
1:A:828:TYR:CD1	1:A:847:ARG:HD2	2.41	0.55
1:A:245:LEU:HD13	1:A:355:ILE:HD13	1.88	0.54
1:B:594:LEU:HD11	1:B:794:LEU:HG	1.87	0.54
1:B:238:MET:HE3	1:B:269:MET:CE	2.34	0.54
1:B:556:ARG:NH1	1:B:559:GLU:OE1	2.39	0.54
1:A:907:ARG:NH1	1:A:925:GLN:OE1	2.39	0.54
1:A:417:MET:HG3	1:A:418:VAL:HG13	1.89	0.54
1:B:245:LEU:HD13	1:B:355:ILE:HD13	1.90	0.54
1:A:421:PRO:HG2	1:A:451:VAL:HG23	1.90	0.54
1:B:219:TYR:OH	1:B:517:ASP:OD1	2.19	0.53
1:B:659:ASP:OD2	6:B:1112:HOH:O	2.19	0.53
1:B:781:PRO:HB2	1:B:784:LEU:HB2	1.90	0.53
1:B:828:TYR:CG	1:B:847:ARG:HD2	2.44	0.53
1:B:465:GLU:N	1:B:465:GLU:OE1	2.40	0.53
1:A:556:ARG:NH1	1:A:559:GLU:OE2	2.42	0.53
1:A:326:LEU:O	6:A:1107:HOH:O	2.19	0.52
1:B:217:GLU:HG2	1:B:231:SER:OG	2.09	0.52
1:A:328:ILE:O	1:A:331:PRO:HD2	2.10	0.52
1:A:348:ASP:OD1	6:A:1102:HOH:O	2.18	0.52
1:B:553:ASP:CG	6:B:1103:HOH:O	2.48	0.52
1:A:217:GLU:HG2	1:A:231:SER:OG	2.11	0.51
1:B:746:GLU:OE1	6:B:1113:HOH:O	2.20	0.50
1:A:141:ASN:OD1	1:A:150:GLU:O	2.28	0.50
1:A:564:LEU:HD13	1:A:601:THR:HG22	1.94	0.50
1:A:663:SER:HB2	1:A:667:VAL:HG23	1.93	0.50
1:B:238:MET:CE	1:B:269:MET:HE3	2.27	0.50
1:B:417:MET:HG3	1:B:418:VAL:HG13	1.93	0.50
1:B:337:VAL:HG21	1:B:354:PRO:HG3	1.94	0.50
1:A:910:SER:HB2	6:B:1113:HOH:O	2.12	0.49
4:A:1003:TPP:HN42	4:A:1003:TPP:H2	1.77	0.49
1:A:770:ARG:NH1	6:A:1104:HOH:O	2.11	0.49
1:B:118:ARG:NE	6:B:1107:HOH:O	2.03	0.49
1:A:115:LEU:HB3	1:A:116:TRP:HD1	1.76	0.49
1:A:424:HIS:HA	1:A:454:ASP:HB3	1.94	0.49
1:A:97:ILE:HG23	1:A:161:LEU:HD21	1.94	0.49
1:B:607:LEU:HB2	1:B:614:ILE:HD11	1.95	0.49
1:B:139:THR:HA	1:B:153:PRO:HA	1.95	0.49
1:B:274:LEU:HD12	1:B:304:PHE:HB3	1.95	0.48

Continued on next page...

Continued from previous page...

Atom-1	Atom-2	Interatomic distance (Å)	Clash overlap (Å)
1:B:885:TRP:O	1:B:889:GLN:HG3	2.13	0.48
1:A:885:TRP:O	1:A:889:GLN:HG3	2.13	0.48
1:B:553:ASP:C	6:B:1103:HOH:O	2.51	0.48
1:A:93:VAL:O	1:A:97:ILE:HG13	2.14	0.48
1:A:140:PHE:N	1:A:152:MET:O	2.31	0.48
1:A:468:GLU:CG	1:B:576:ARG:HE	2.25	0.48
1:A:856:MET:HE3	1:A:895:ALA:HA	1.95	0.47
1:A:753:VAL:HG22	1:A:779:MET:HG3	1.96	0.47
1:A:782:LYS:HB2	1:A:782:LYS:HE3	1.74	0.47
1:A:366:GLN:NE2	1:B:662:LEU:O	2.47	0.47
1:B:406:ARG:NH1	1:B:409:MET:O	2.45	0.47
1:B:328:ILE:O	1:B:331:PRO:HD2	2.14	0.47
1:B:489:LEU:HD23	1:B:489:LEU:HA	1.71	0.47
1:B:556:ARG:N	6:B:1103:HOH:O	1.96	0.47
1:B:118:ARG:CB	6:B:1107:HOH:O	2.59	0.47
1:B:293:TRP:O	1:B:293:TRP:CG	2.67	0.47
1:A:295:THR:HB	1:A:709:GLN:HB3	1.96	0.47
1:B:649:HIS:ND1	1:B:650:ASP:O	2.34	0.47
1:A:330:ASN:O	1:A:334:MET:HG2	2.15	0.46
1:A:628:HIS:HB3	1:A:785:LEU:HD13	1.97	0.46
1:A:142:VAL:HB	1:A:145:PHE:HB3	1.97	0.46
1:B:118:ARG:CG	6:B:1107:HOH:O	2.62	0.46
1:B:469:PRO:HB2	1:B:477:TYR:CE2	2.50	0.46
1:B:136:PHE:HD2	1:B:155:LYS:HD2	1.80	0.46
1:B:261:MET:SD	1:B:269:MET:HG3	2.55	0.46
1:B:818:LYS:O	1:B:870:GLU:HG2	2.16	0.46
1:A:87:ASP:OD1	1:A:88:ALA:N	2.49	0.46
1:A:188:ARG:NH1	1:A:442:ASP:OD2	2.44	0.46
1:A:878:GLU:HG3	1:A:883:GLY:HA3	1.98	0.46
1:A:545:ASP:OD1	1:A:545:ASP:N	2.45	0.46
1:A:818:LYS:O	1:A:870:GLU:HG2	2.16	0.45
4:B:1003:TPP:HN42	4:B:1003:TPP:H2	1.81	0.45
1:B:601:THR:HG23	1:B:645:LEU:HD11	1.99	0.45
1:A:713:ARG:NH2	2:A:1001:P6G:O10	2.50	0.45
1:A:918:MET:O	1:A:918:MET:HG3	2.17	0.45
1:B:616:ILE:HG23	1:B:684:LEU:HD22	1.97	0.45
1:A:525:GLU:H	1:A:525:GLU:HG2	1.38	0.45
1:B:326:LEU:H	4:B:1003:TPP:HM21	1.82	0.44
1:B:330:ASN:OD1	1:B:356:THR:HG21	2.17	0.44
1:B:360:ASP:HB3	1:B:392:ASN:HA	1.99	0.44
1:A:539:TYR:CZ	1:A:541:GLY:HA3	2.52	0.44

Continued on next page...

Continued from previous page...

Atom-1	Atom-2	Interatomic distance (Å)	Clash overlap (Å)
1:A:601:THR:HG23	1:A:645:LEU:HD11	1.99	0.44
1:B:753:VAL:HG22	1:B:779:MET:HG3	1.98	0.44
1:B:248:HIS:HB3	1:B:441:LEU:HD23	1.99	0.44
1:A:255:ARG:NH2	6:A:1126:HOH:O	2.51	0.44
1:B:713:ARG:NH1	2:B:1001:P6G:O1	2.51	0.44
1:B:337:VAL:HG11	1:B:354:PRO:HB3	2.00	0.44
1:B:158:TYR:CE2	1:B:162:LYS:HE2	2.53	0.43
1:B:333:VAL:O	1:B:337:VAL:HG13	2.18	0.43
1:B:467:ASP:OD1	6:B:1114:HOH:O	2.21	0.43
1:A:113:LEU:O	1:A:479:LYS:HE2	2.18	0.43
1:A:331:PRO:HB2	1:A:669:ALA:HB3	2.00	0.43
1:B:663:SER:HB2	1:B:667:VAL:HG23	2.01	0.43
1:B:343:ARG:NH2	1:B:678:GLU:OE2	2.51	0.43
1:B:608:VAL:HG13	1:B:614:ILE:HD12	2.01	0.43
1:A:241:MET:HG3	1:A:437:THR:OG1	2.18	0.43
1:A:594:LEU:HD11	1:A:794:LEU:HG	1.99	0.43
1:A:596:TRP:CE2	1:A:781:PRO:HG3	2.54	0.43
1:B:513:ARG:NE	6:B:1124:HOH:O	2.42	0.43
1:B:831:LEU:HB3	1:B:845:ILE:HD13	2.00	0.43
1:A:170:GLY:HA2	6:A:1119:HOH:O	2.18	0.43
1:A:397:PHE:CD1	1:A:398:THR:HG23	2.54	0.43
1:B:686:GLU:HG3	1:B:720:LEU:HB2	2.00	0.42
1:A:408:THR:HG21	1:B:417:MET:O	2.18	0.42
1:B:877:GLU:O	1:B:907:ARG:HD2	2.19	0.42
1:A:602:LEU:HD23	1:A:602:LEU:HA	1.89	0.42
1:B:276:LYS:O	6:B:1115:HOH:O	2.22	0.42
1:A:255:ARG:HA	1:A:255:ARG:HD3	1.81	0.42
1:A:548:TRP:CZ3	1:A:550:ASN:HA	2.55	0.42
1:A:217:GLU:OE1	1:A:268:ASN:ND2	2.53	0.42
1:A:217:GLU:HG3	1:A:229:ARG:NE	2.32	0.42
1:B:209:GLU:HG2	1:B:243:LYS:HE2	2.02	0.42
1:B:229:ARG:O	1:B:229:ARG:HG3	2.20	0.42
1:B:241:MET:HG3	1:B:437:THR:OG1	2.19	0.42
1:B:907:ARG:NH2	1:B:921:HIS:CD2	2.88	0.42
1:B:255:ARG:HA	1:B:255:ARG:HD3	1.84	0.41
1:A:112:PRO:HG2	1:A:457:CYS:HA	2.01	0.41
1:A:738:GLU:HB3	1:A:883:GLY:N	2.35	0.41
1:B:606:THR:OG1	1:B:765:ARG:HD2	2.20	0.41
1:B:782:LYS:HE3	1:B:782:LYS:HB2	1.87	0.41
1:A:229:ARG:O	1:A:229:ARG:HG3	2.20	0.41
1:A:728:GLN:NE2	6:A:1109:HOH:O	2.29	0.41

Continued on next page...

Continued from previous page...

Atom-1	Atom-2	Interatomic distance (Å)	Clash overlap (Å)
1:B:229:ARG:NH1	6:B:1123:HOH:O	2.41	0.41
1:B:564:LEU:HD21	1:B:648:ILE:HD11	2.03	0.41
1:B:125:ASP:HA	1:B:126:PRO:HD3	1.56	0.41
1:A:488:LYS:HE3	1:A:488:LYS:HB2	1.69	0.41
1:A:625:THR:OG1	1:A:688:GLN:HG3	2.20	0.41
4:A:1003:TPP:HN42	4:A:1003:TPP:C2	2.34	0.41
1:B:111:ASP:HA	1:B:112:PRO:HD3	1.78	0.41
1:A:124:LEU:HD23	1:A:124:LEU:HA	1.87	0.41
1:A:111:ASP:HA	1:A:112:PRO:HD3	1.94	0.40
1:B:195:GLN:H	1:B:195:GLN:HG2	1.71	0.40
1:A:326:LEU:HG	4:A:1003:TPP:C4'	2.51	0.40
1:B:602:LEU:HD23	1:B:602:LEU:HA	1.90	0.40

There are no symmetry-related clashes.

5.3 Torsion angles [i](#)

5.3.1 Protein backbone [i](#)

In the following table, the Percentiles column shows the percent Ramachandran outliers of the chain as a percentile score with respect to all X-ray entries followed by that with respect to entries of similar resolution.

The Analysed column shows the number of residues for which the backbone conformation was analysed, and the total number of residues.

Mol	Chain	Analysed	Favoured	Allowed	Outliers	Percentiles	
1	A	840/886 (95%)	815 (97%)	25 (3%)	0	100	100
1	B	841/886 (95%)	812 (97%)	29 (3%)	0	100	100
All	All	1681/1772 (95%)	1627 (97%)	54 (3%)	0	100	100

There are no Ramachandran outliers to report.

5.3.2 Protein sidechains [i](#)

In the following table, the Percentiles column shows the percent sidechain outliers of the chain as a percentile score with respect to all X-ray entries followed by that with respect to entries of similar resolution.

The Analysed column shows the number of residues for which the sidechain conformation was

analysed, and the total number of residues.

Mol	Chain	Analysed	Rotameric	Outliers	Percentiles	
1	A	710/745 (95%)	690 (97%)	20 (3%)	43	71
1	B	711/745 (95%)	692 (97%)	19 (3%)	44	72
All	All	1421/1490 (95%)	1382 (97%)	39 (3%)	44	72

All (39) residues with a non-rotameric sidechain are listed below:

Mol	Chain	Res	Type
1	A	121	VAL
1	A	144	SER
1	A	145	PHE
1	A	156	ASP
1	A	268	ASN
1	A	295	THR
1	A	397	PHE
1	A	468	GLU
1	A	525	GLU
1	A	540	LEU
1	A	571	HIS
1	A	660	SER
1	A	662	LEU
1	A	691	ASP
1	A	843	VAL
1	A	863	ILE
1	A	878	GLU
1	A	901	GLU
1	A	917	TYR
1	A	919	SER
1	B	121	VAL
1	B	125	ASP
1	B	145	PHE
1	B	156	ASP
1	B	188	ARG
1	B	217	GLU
1	B	268	ASN
1	B	274	LEU
1	B	397	PHE
1	B	487	ARG
1	B	571	HIS
1	B	578	SER
1	B	613	ARG
1	B	662	LEU

Continued on next page...

Continued from previous page...

Mol	Chain	Res	Type
1	B	664	GLU
1	B	691	ASP
1	B	843	VAL
1	B	919	SER
1	B	922	LEU

Sometimes sidechains can be flipped to improve hydrogen bonding and reduce clashes. All (2) such sidechains are listed below:

Mol	Chain	Res	Type
1	A	571	HIS
1	A	619	GLN

5.3.3 RNA [i](#)

There are no RNA molecules in this entry.

5.4 Non-standard residues in protein, DNA, RNA chains [i](#)

There are no non-standard protein/DNA/RNA residues in this entry.

5.5 Carbohydrates [i](#)

There are no monosaccharides in this entry.

5.6 Ligand geometry [i](#)

Of 7 ligands modelled in this entry, 3 are monoatomic - leaving 4 for Mogul analysis.

In the following table, the Counts columns list the number of bonds (or angles) for which Mogul statistics could be retrieved, the number of bonds (or angles) that are observed in the model and the number of bonds (or angles) that are defined in the Chemical Component Dictionary. The Link column lists molecule types, if any, to which the group is linked. The Z score for a bond length (or angle) is the number of standard deviations the observed value is removed from the expected value. A bond length (or angle) with $|Z| > 2$ is considered an outlier worth inspection. RMSZ is the root-mean-square of all Z scores of the bond lengths (or angles).

Mol	Type	Chain	Res	Link	Bond lengths			Bond angles		
					Counts	RMSZ	$\# Z > 2$	Counts	RMSZ	$\# Z > 2$
2	P6G	A	1001	-	18,18,18	0.54	0	17,17,17	0.22	0

Mol	Type	Chain	Res	Link	Bond lengths			Bond angles		
					Counts	RMSZ	# Z > 2	Counts	RMSZ	# Z > 2
4	TPP	A	1003	3	22,27,27	6.54	12 (54%)	29,40,40	1.89	8 (27%)
2	P6G	B	1001	-	18,18,18	0.54	0	17,17,17	0.20	0
4	TPP	B	1003	3	22,27,27	6.66	12 (54%)	29,40,40	1.98	9 (31%)

In the following table, the Chirals column lists the number of chiral outliers, the number of chiral centers analysed, the number of these observed in the model and the number defined in the Chemical Component Dictionary. Similar counts are reported in the Torsion and Rings columns. '-' means no outliers of that kind were identified.

Mol	Type	Chain	Res	Link	Chirals	Torsions	Rings
2	P6G	A	1001	-	-	4/16/16/16	-
4	TPP	A	1003	3	-	3/16/17/17	0/2/2/2
2	P6G	B	1001	-	-	8/16/16/16	-
4	TPP	B	1003	3	-	3/16/17/17	0/2/2/2

All (24) bond length outliers are listed below:

Mol	Chain	Res	Type	Atoms	Z	Observed(Å)	Ideal(Å)
4	B	1003	TPP	C4-N3	26.33	1.62	1.39
4	A	1003	TPP	C4-N3	25.76	1.62	1.39
4	B	1003	TPP	C2'-N3'	8.39	1.49	1.34
4	A	1003	TPP	C2'-N3'	8.33	1.48	1.34
4	B	1003	TPP	C4'-N3'	-7.06	1.24	1.35
4	A	1003	TPP	C4'-N3'	-6.96	1.25	1.35
4	A	1003	TPP	C6'-N1'	6.30	1.47	1.34
4	B	1003	TPP	C6'-N1'	5.88	1.46	1.34
4	B	1003	TPP	C6-C5	5.78	1.53	1.50
4	A	1003	TPP	C6-C5	5.00	1.53	1.50
4	A	1003	TPP	C4'-N4'	4.71	1.45	1.34
4	B	1003	TPP	C4'-N4'	4.64	1.45	1.34
4	A	1003	TPP	C5'-C4'	4.55	1.50	1.42
4	B	1003	TPP	C5'-C4'	4.01	1.49	1.42
4	B	1003	TPP	C6'-C5'	-3.85	1.29	1.37
4	A	1003	TPP	C6'-C5'	-3.69	1.30	1.37
4	A	1003	TPP	C2'-N1'	-3.05	1.29	1.34
4	B	1003	TPP	C2'-N1'	-2.71	1.30	1.34
4	B	1003	TPP	PB-O2B	-2.39	1.45	1.54
4	B	1003	TPP	PB-O3B	-2.21	1.46	1.54
4	B	1003	TPP	PA-O2A	-2.19	1.45	1.55
4	A	1003	TPP	PB-O2B	-2.14	1.46	1.54
4	A	1003	TPP	PB-O3B	-2.04	1.47	1.54

Continued on next page...

Continued from previous page...

Mol	Chain	Res	Type	Atoms	Z	Observed(Å)	Ideal(Å)
4	A	1003	TPP	C7'-C5'	2.00	1.55	1.51

All (17) bond angle outliers are listed below:

Mol	Chain	Res	Type	Atoms	Z	Observed(°)	Ideal(°)
4	A	1003	TPP	CM2-C2'-N1'	4.79	122.40	117.14
4	B	1003	TPP	CM2-C2'-N1'	4.67	122.28	117.14
4	B	1003	TPP	O3B-PB-O3A	3.69	117.01	104.64
4	A	1003	TPP	CM4-C4-N3	3.66	127.20	122.53
4	B	1003	TPP	N1'-C2'-N3'	-3.47	119.58	125.54
4	B	1003	TPP	CM4-C4-N3	3.44	126.92	122.53
4	A	1003	TPP	PA-O3A-PB	-3.43	121.05	132.83
4	A	1003	TPP	N1'-C2'-N3'	-3.28	119.89	125.54
4	B	1003	TPP	C6'-C5'-C4'	2.89	119.66	115.72
4	B	1003	TPP	PA-O3A-PB	-2.88	122.96	132.83
4	A	1003	TPP	C5'-C7'-N3	-2.59	108.96	113.28
4	B	1003	TPP	C5'-C7'-N3	-2.58	108.98	113.28
4	A	1003	TPP	C6'-C5'-C4'	2.54	119.17	115.72
4	A	1003	TPP	O3B-PB-O3A	2.34	112.48	104.64
4	A	1003	TPP	C2'-N3'-C4'	2.15	121.43	118.08
4	B	1003	TPP	C5'-C6'-N1'	-2.13	120.27	123.82
4	B	1003	TPP	C6'-N1'-C2'	2.12	119.58	115.96

There are no chirality outliers.

All (18) torsion outliers are listed below:

Mol	Chain	Res	Type	Atoms
4	A	1003	TPP	C4-C5-C6-C7
4	B	1003	TPP	PA-O3A-PB-O3B
2	A	1001	P6G	O7-C8-C9-O10
2	B	1001	P6G	C18-C17-O16-C15
2	B	1001	P6G	O10-C11-C12-O13
2	B	1001	P6G	C15-C14-O13-C12
2	A	1001	P6G	O10-C11-C12-O13
4	A	1003	TPP	PA-O3A-PB-O2B
2	B	1001	P6G	C2-C3-O4-C5
2	B	1001	P6G	C5-C6-O7-C8
4	B	1003	TPP	C4-C5-C6-C7
2	B	1001	P6G	O16-C17-C18-O19
2	A	1001	P6G	O4-C5-C6-O7
2	B	1001	P6G	C12-C11-O10-C9
4	B	1003	TPP	PA-O3A-PB-O2B

Continued on next page...

Continued from previous page...

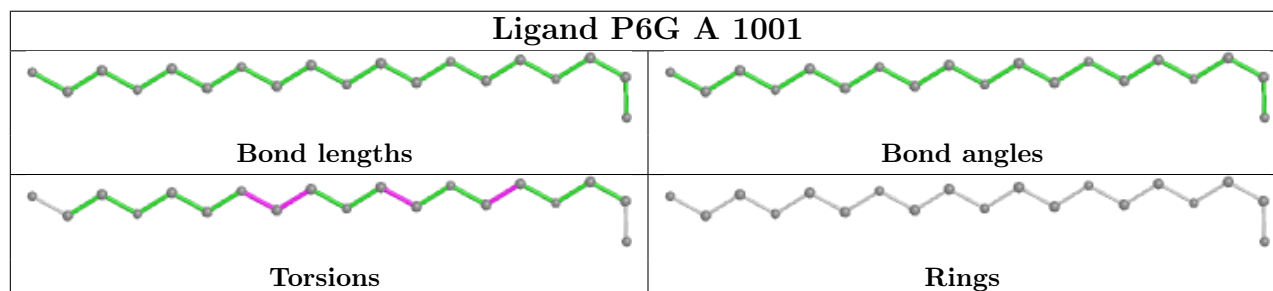
Mol	Chain	Res	Type	Atoms
2	B	1001	P6G	O13-C14-C15-O16
4	A	1003	TPP	C7-O7-PA-O3A
2	A	1001	P6G	C11-C12-O13-C14

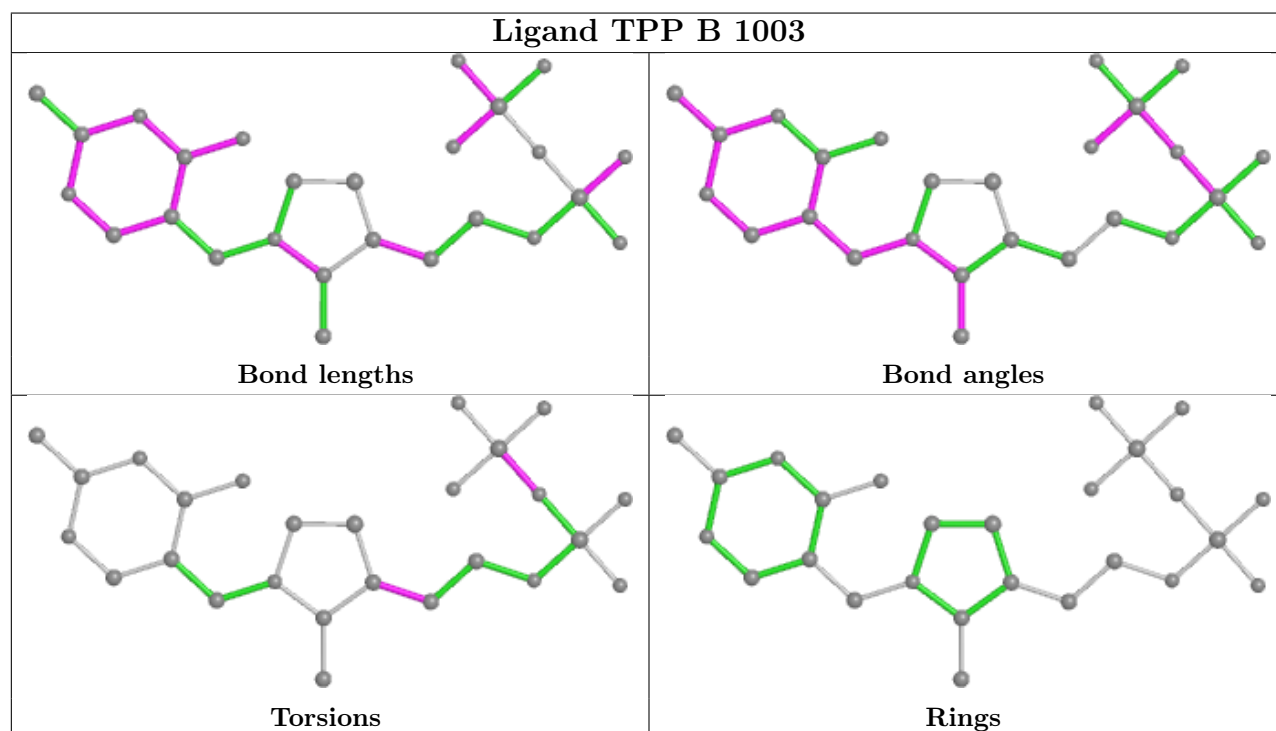
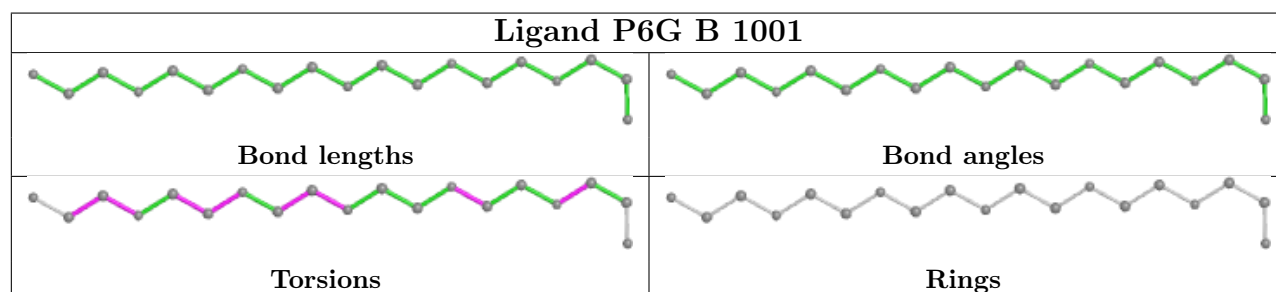
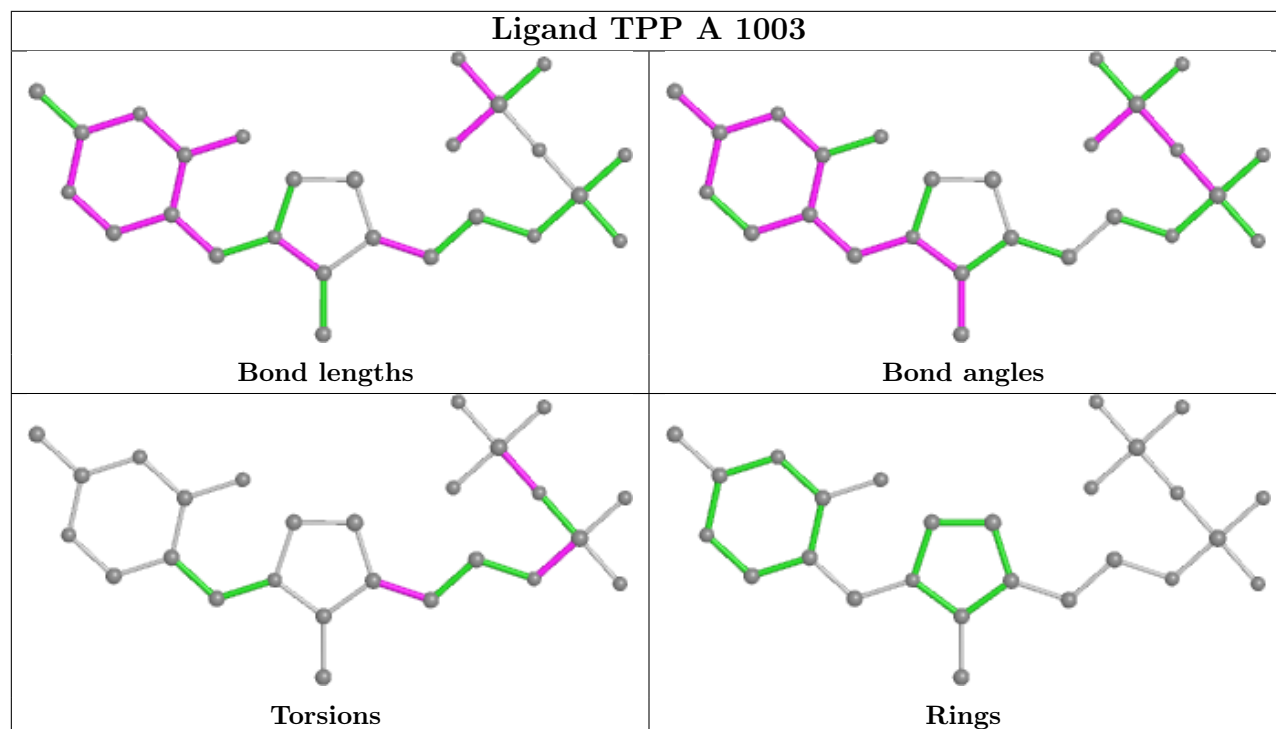
There are no ring outliers.

4 monomers are involved in 10 short contacts:

Mol	Chain	Res	Type	Clashes	Symm-Clashes
2	A	1001	P6G	2	0
4	A	1003	TPP	4	0
2	B	1001	P6G	2	0
4	B	1003	TPP	2	0

The following is a two-dimensional graphical depiction of Mogul quality analysis of bond lengths, bond angles, torsion angles, and ring geometry for all instances of the Ligand of Interest. In addition, ligands with molecular weight > 250 and outliers as shown on the validation Tables will also be included. For torsion angles, if less than 5% of the Mogul distribution of torsion angles is within 10 degrees of the torsion angle in question, then that torsion angle is considered an outlier. Any bond that is central to one or more torsion angles identified as an outlier by Mogul will be highlighted in the graph. For rings, the root-mean-square deviation (RMSD) between the ring in question and similar rings identified by Mogul is calculated over all ring torsion angles. If the average RMSD is greater than 60 degrees and the minimal RMSD between the ring in question and any Mogul-identified rings is also greater than 60 degrees, then that ring is considered an outlier. The outliers are highlighted in purple. The color gray indicates Mogul did not find sufficient equivalents in the CSD to analyse the geometry.





5.7 Other polymers [i](#)

There are no such residues in this entry.

5.8 Polymer linkage issues [i](#)

There are no chain breaks in this entry.

6 Fit of model and data

6.1 Protein, DNA and RNA chains

In the following table, the column labelled ‘#RSRZ > 2’ contains the number (and percentage) of RSRZ outliers, followed by percent RSRZ outliers for the chain as percentile scores relative to all X-ray entries and entries of similar resolution. The OWAB column contains the minimum, median, 95th percentile and maximum values of the occupancy-weighted average B-factor per residue. The column labelled ‘Q < 0.9’ lists the number of (and percentage) of residues with an average occupancy less than 0.9.

Mol	Chain	Analysed	<RSRZ>	#RSRZ>2	OWAB(Å ²)	Q<0.9
1	A	844/886 (95%)	0.16	35 (4%) 37 36	24, 41, 71, 87	0
1	B	845/886 (95%)	0.20	32 (3%) 40 40	25, 40, 69, 84	0
All	All	1689/1772 (95%)	0.18	67 (3%) 38 37	24, 40, 69, 87	0

All (67) RSRZ outliers are listed below:

Mol	Chain	Res	Type	RSRZ
1	B	857	ASP	5.6
1	A	530	ALA	5.1
1	A	289	HIS	4.9
1	A	136	PHE	4.2
1	B	131	LEU	4.0
1	B	536	TRP	3.9
1	B	900	THR	3.8
1	A	291	GLU	3.8
1	B	899	GLY	3.7
1	A	857	ASP	3.5
1	A	137	GLU	3.5
1	A	131	LEU	3.2
1	B	531	LEU	3.2
1	B	288	LYS	3.2
1	B	901	GLU	3.0
1	B	518	HIS	3.0
1	B	897	PRO	2.9
1	A	811	GLU	2.9
1	A	149	GLN	2.9
1	B	571	HIS	2.9
1	A	156	ASP	2.8
1	A	531	LEU	2.8
1	A	155	LYS	2.7
1	B	530	ALA	2.7

Continued on next page...

Continued from previous page...

Mol	Chain	Res	Type	RSRZ
1	B	129	HIS	2.7
1	B	867	VAL	2.6
1	A	794	LEU	2.6
1	A	87	ASP	2.5
1	A	152	MET	2.5
1	B	291	GLU	2.4
1	A	138	GLU	2.4
1	A	518	HIS	2.4
1	A	864	ALA	2.4
1	B	115	LEU	2.3
1	B	293	TRP	2.3
1	A	863	ILE	2.3
1	A	568	PRO	2.3
1	A	93	VAL	2.3
1	A	865	PRO	2.3
1	B	892	PHE	2.3
1	A	183	ARG	2.3
1	A	115	LEU	2.3
1	A	536	TRP	2.2
1	A	842	ASP	2.2
1	B	786	ARG	2.2
1	A	867	VAL	2.2
1	B	930	ASP	2.2
1	A	571	HIS	2.1
1	B	890	HIS	2.1
1	B	928	LEU	2.1
1	B	864	ALA	2.1
1	B	794	LEU	2.1
1	B	199	ASP	2.1
1	B	865	PRO	2.1
1	A	288	LYS	2.1
1	A	788	PRO	2.1
1	B	116	TRP	2.1
1	A	569	GLU	2.1
1	A	892	PHE	2.1
1	B	136	PHE	2.1
1	B	117	GLN	2.1
1	B	286	ALA	2.1
1	B	820	VAL	2.0
1	A	127	ALA	2.0
1	A	290	GLY	2.0
1	B	872	PHE	2.0

Continued on next page...

Continued from previous page...

Mol	Chain	Res	Type	RSRZ
1	A	812	LEU	2.0

6.2 Non-standard residues in protein, DNA, RNA chains [i](#)

There are no non-standard protein/DNA/RNA residues in this entry.

6.3 Carbohydrates [i](#)

There are no monosaccharides in this entry.

6.4 Ligands [i](#)

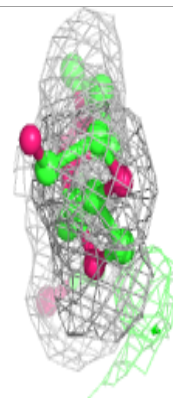
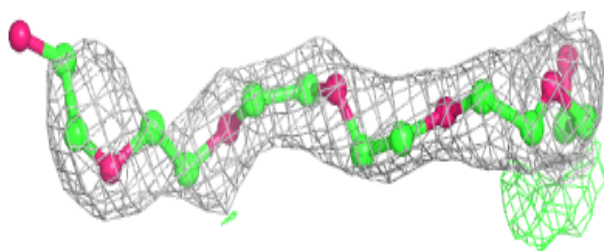
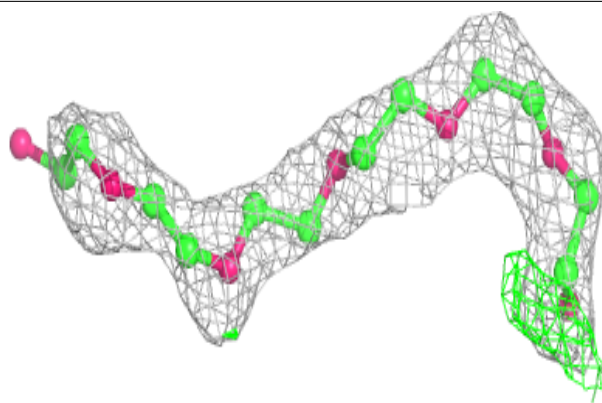
In the following table, the Atoms column lists the number of modelled atoms in the group and the number defined in the chemical component dictionary. The B-factors column lists the minimum, median, 95th percentile and maximum values of B factors of atoms in the group. The column labelled 'Q< 0.9' lists the number of atoms with occupancy less than 0.9.

Mol	Type	Chain	Res	Atoms	RSCC	RSR	B-factors(\AA^2)	Q<0.9
2	P6G	B	1001	19/19	0.87	0.20	49,54,68,68	0
2	P6G	A	1001	19/19	0.90	0.20	58,59,67,67	0
3	MG	B	1002	1/1	0.91	0.36	29,29,29,29	0
5	CA	A	1004	1/1	0.92	0.34	59,59,59,59	0
3	MG	A	1002	1/1	0.96	0.22	33,33,33,33	0
4	TPP	B	1003	26/26	0.98	0.21	27,31,36,41	0
4	TPP	A	1003	26/26	0.98	0.18	26,31,36,39	0

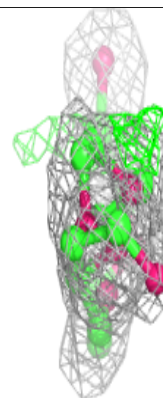
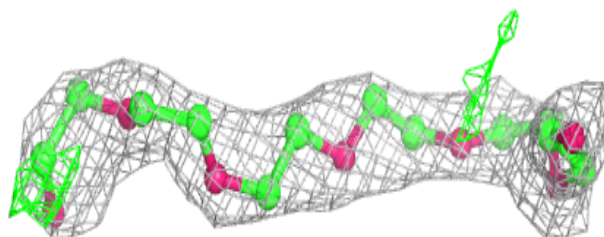
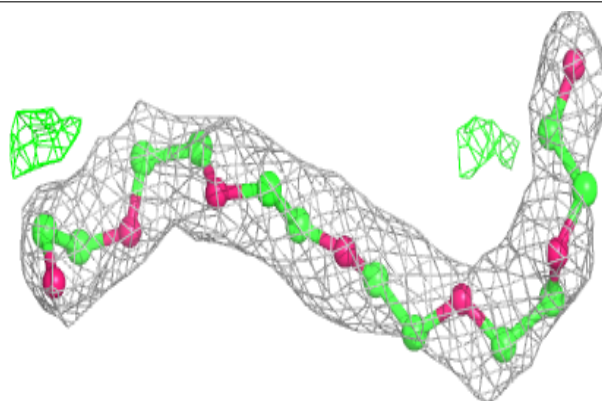
The following is a graphical depiction of the model fit to experimental electron density of all instances of the Ligand of Interest. In addition, ligands with molecular weight > 250 and outliers as shown on the geometry validation Tables will also be included. Each fit is shown from different orientation to approximate a three-dimensional view.

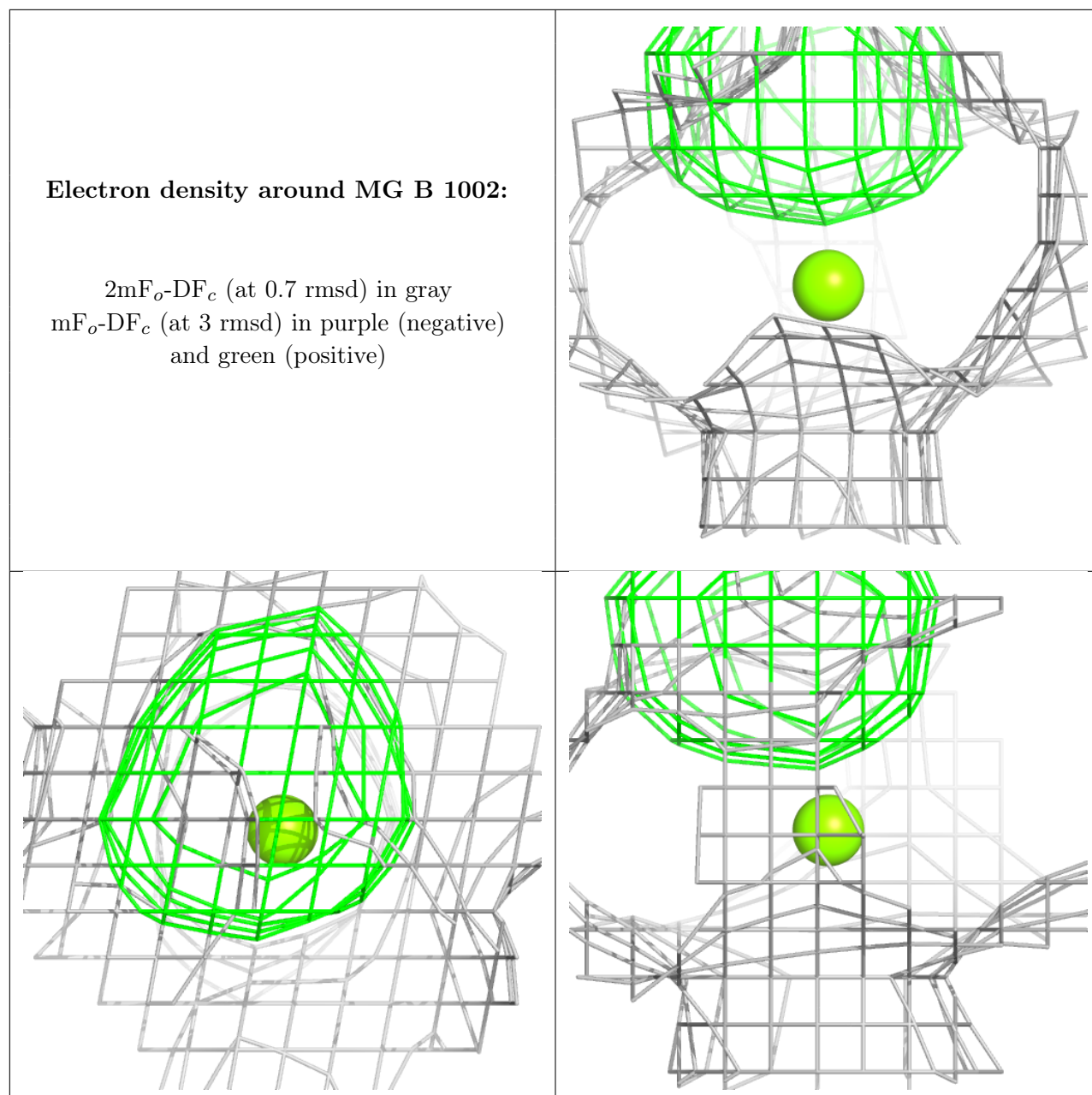
Electron density around P6G B 1001:

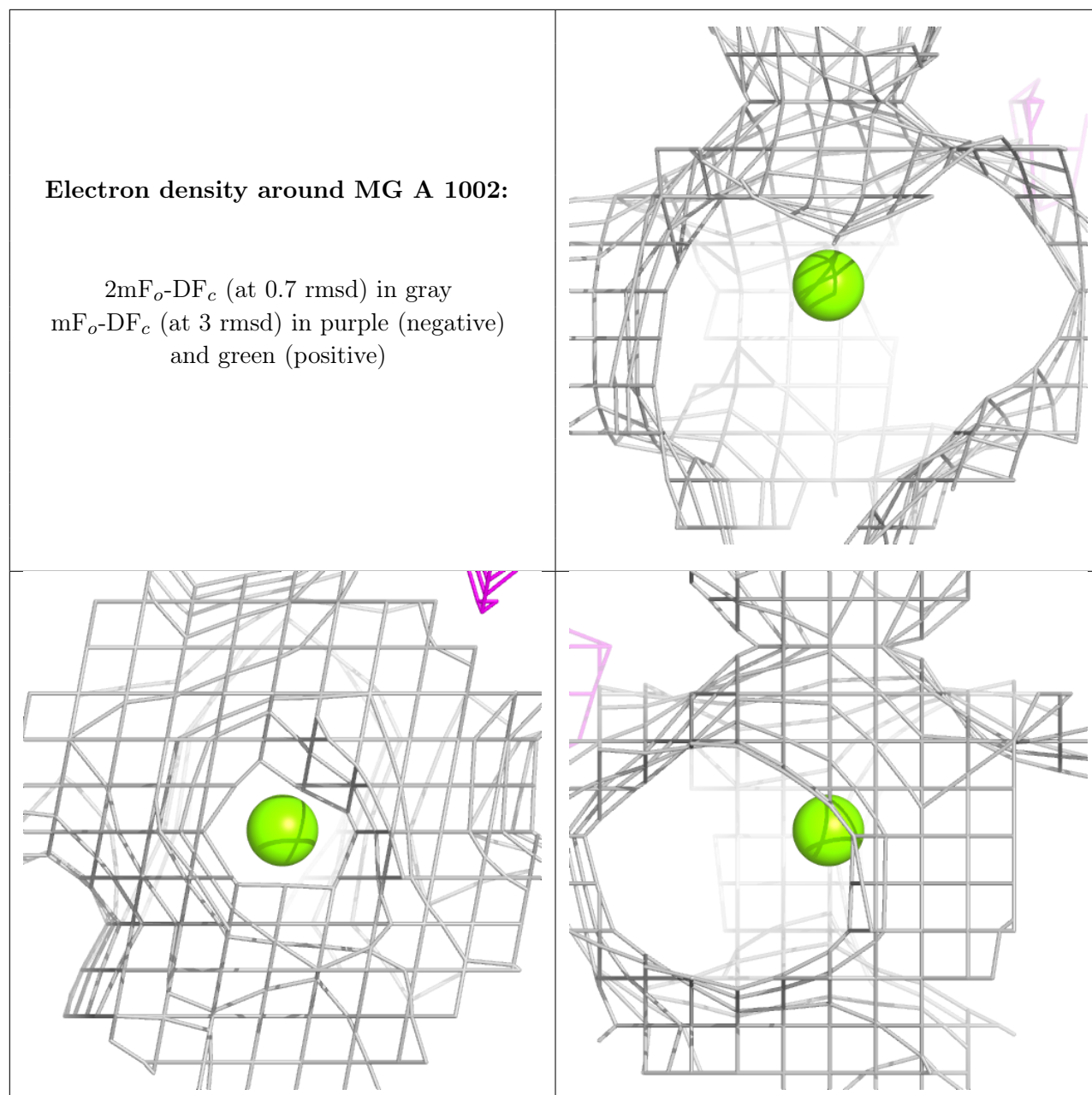
$2mF_o-DF_c$ (at 0.7 rmsd) in gray
 mF_o-DF_c (at 3 rmsd) in purple (negative)
and green (positive)

**Electron density around P6G A 1001:**

$2mF_o-DF_c$ (at 0.7 rmsd) in gray
 mF_o-DF_c (at 3 rmsd) in purple (negative)
and green (positive)

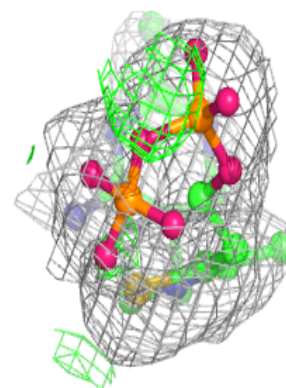
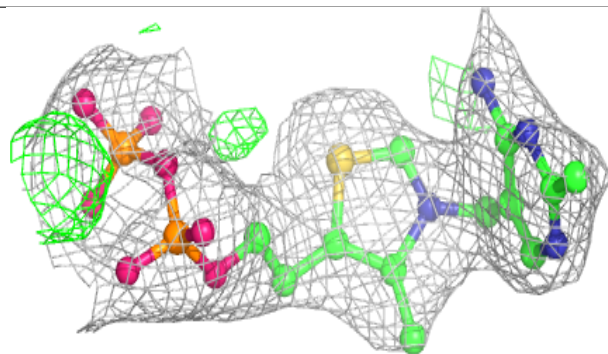
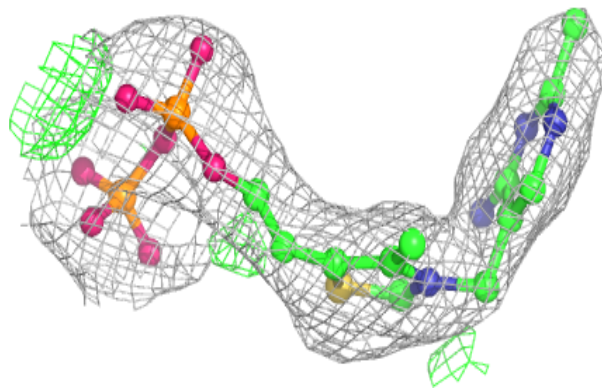




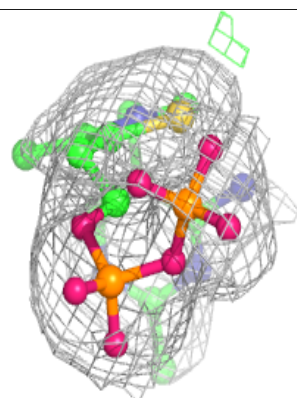
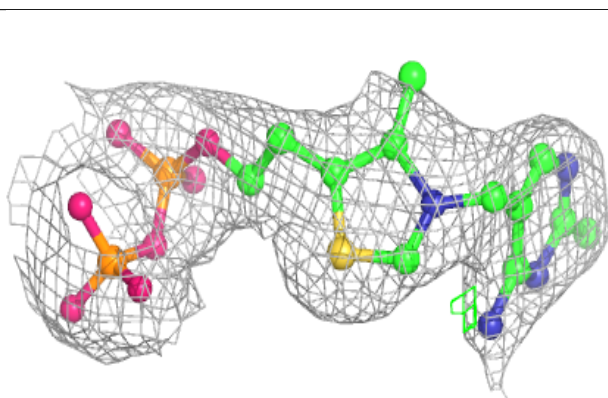
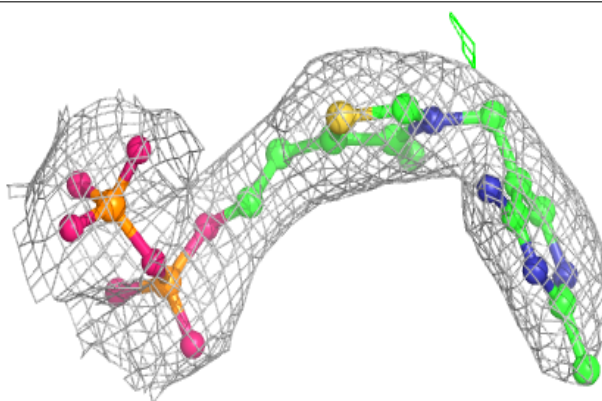


Electron density around TPP B 1003:

$2mF_o-DF_c$ (at 0.7 rmsd) in gray
 mF_o-DF_c (at 3 rmsd) in purple (negative)
and green (positive)

**Electron density around TPP A 1003:**

$2mF_o-DF_c$ (at 0.7 rmsd) in gray
 mF_o-DF_c (at 3 rmsd) in purple (negative)
and green (positive)



6.5 Other polymers [i](#)

There are no such residues in this entry.