



wwPDB X-ray Structure Validation Summary Report ⓘ

Nov 15, 2023 – 08:13 PM JST

PDB ID : 6JWU
Title : Crystal structure of Plasmodium falciparum HPPK-DHPS wild type with STZ-DHP
Authors : Chitnumsub, P.; Jaruwat, A.; Yuthavong, Y.
Deposited on : 2019-04-21
Resolution : 2.65 Å(reported)

This is a wwPDB X-ray Structure Validation Summary Report for a publicly released PDB entry.

We welcome your comments at validation@mail.wwpdb.org

A user guide is available at

<https://www.wwpdb.org/validation/2017/XrayValidationReportHelp>

with specific help available everywhere you see the ⓘ symbol.

The types of validation reports are described at

<http://www.wwpdb.org/validation/2017/FAQs#types>.

The following versions of software and data (see [references ⓘ](#)) were used in the production of this report:

MolProbity : 4.02b-467
Mogul : 1.8.5 (274361), CSD as541be (2020)
Xtrriage (Phenix) : 1.13
EDS : 2.36
buster-report : 1.1.7 (2018)
Percentile statistics : 20191225.v01 (using entries in the PDB archive December 25th 2019)
Refmac : 5.8.0158
CCP4 : 7.0.044 (Gargrove)
Ideal geometry (proteins) : Engh & Huber (2001)
Ideal geometry (DNA, RNA) : Parkinson et al. (1996)
Validation Pipeline (wwPDB-VP) : 2.36

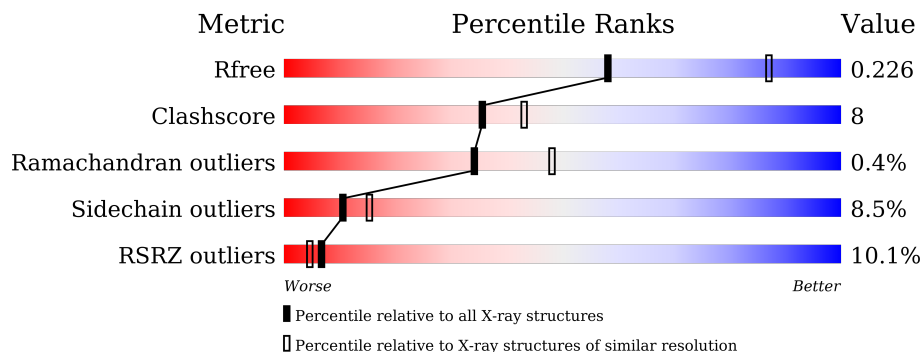
1 Overall quality at a glance

The following experimental techniques were used to determine the structure:

X-RAY DIFFRACTION

The reported resolution of this entry is 2.65 Å.

Percentile scores (ranging between 0-100) for global validation metrics of the entry are shown in the following graphic. The table shows the number of entries on which the scores are based.



Metric	Whole archive (#Entries)	Similar resolution (#Entries, resolution range(Å))
R_{free}	130704	1332 (2.68-2.64)
Clashscore	141614	1374 (2.68-2.64)
Ramachandran outliers	138981	1349 (2.68-2.64)
Sidechain outliers	138945	1349 (2.68-2.64)
RSRZ outliers	127900	1318 (2.68-2.64)

The table below summarises the geometric issues observed across the polymeric chains and their fit to the electron density. The red, orange, yellow and green segments of the lower bar indicate the fraction of residues that contain outliers for ≥ 3 , 2, 1 and 0 types of geometric quality criteria respectively. A grey segment represents the fraction of residues that are not modelled. The numeric value for each fraction is indicated below the corresponding segment, with a dot representing fractions $\leq 5\%$. The upper red bar (where present) indicates the fraction of residues that have poor fit to the electron density. The numeric value is given above the bar.

Mol	Chain	Length	Quality of chain
1	A	728	
1	B	728	

The following table lists non-polymeric compounds, carbohydrate monomers and non-standard residues in protein, DNA, RNA chains that are outliers for geometric or electron-density-fit criteria:

Mol	Type	Chain	Res	Chirality	Geometry	Clashes	Electron density
4	PO4	A	803	-	-	X	-
8	ACT	B	802	-	-	X	-

2 Entry composition i

There are 9 unique types of molecules in this entry. The entry contains 9483 atoms, of which 0 are hydrogens and 0 are deuteriums.

In the tables below, the ZeroOcc column contains the number of atoms modelled with zero occupancy, the AltConf column contains the number of residues with at least one atom in alternate conformation and the Trace column contains the number of residues modelled with at most 2 atoms.

- Molecule 1 is a protein called 7,8-dihydro-6-hydroxymethylpterin pyrophosphokinase-dihydropteroate synthase.

Mol	Chain	Residues	Atoms					ZeroOcc	AltConf	Trace
			Total	C	N	O	S			
1	A	558	4604	2968	754	859	23	0	0	0
1	B	534	4396	2829	726	819	22	0	0	0

There are 44 discrepancies between the modelled and reference sequences:

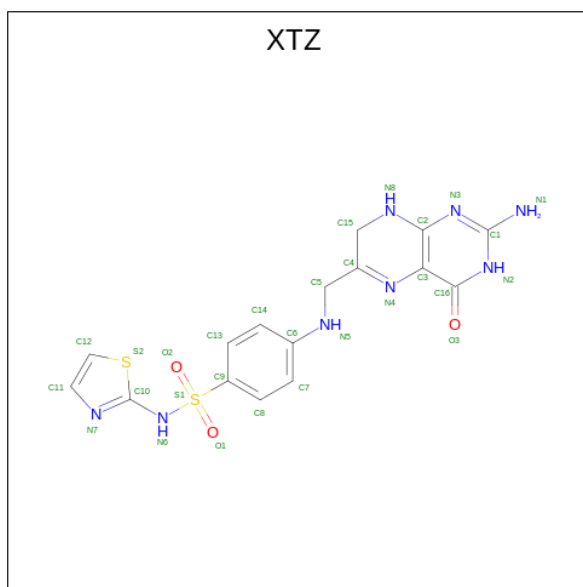
Chain	Residue	Modelled	Actual	Comment	Reference
A	707	LYS	-	expression tag	UNP Q25704
A	708	ASP	-	expression tag	UNP Q25704
A	709	PRO	-	expression tag	UNP Q25704
A	710	ASN	-	expression tag	UNP Q25704
A	711	SER	-	expression tag	UNP Q25704
A	712	SER	-	expression tag	UNP Q25704
A	713	SER	-	expression tag	UNP Q25704
A	714	VAL	-	expression tag	UNP Q25704
A	715	ASP	-	expression tag	UNP Q25704
A	716	LYS	-	expression tag	UNP Q25704
A	717	LEU	-	expression tag	UNP Q25704
A	718	ALA	-	expression tag	UNP Q25704
A	719	ALA	-	expression tag	UNP Q25704
A	720	ALA	-	expression tag	UNP Q25704
A	721	LEU	-	expression tag	UNP Q25704
A	722	GLU	-	expression tag	UNP Q25704
A	723	HIS	-	expression tag	UNP Q25704
A	724	HIS	-	expression tag	UNP Q25704
A	725	HIS	-	expression tag	UNP Q25704
A	726	HIS	-	expression tag	UNP Q25704
A	727	HIS	-	expression tag	UNP Q25704
A	728	HIS	-	expression tag	UNP Q25704
B	707	LYS	-	expression tag	UNP Q25704
B	708	ASP	-	expression tag	UNP Q25704

Continued on next page...

Continued from previous page...

Chain	Residue	Modelled	Actual	Comment	Reference
B	709	PRO	-	expression tag	UNP Q25704
B	710	ASN	-	expression tag	UNP Q25704
B	711	SER	-	expression tag	UNP Q25704
B	712	SER	-	expression tag	UNP Q25704
B	713	SER	-	expression tag	UNP Q25704
B	714	VAL	-	expression tag	UNP Q25704
B	715	ASP	-	expression tag	UNP Q25704
B	716	LYS	-	expression tag	UNP Q25704
B	717	LEU	-	expression tag	UNP Q25704
B	718	ALA	-	expression tag	UNP Q25704
B	719	ALA	-	expression tag	UNP Q25704
B	720	ALA	-	expression tag	UNP Q25704
B	721	LEU	-	expression tag	UNP Q25704
B	722	GLU	-	expression tag	UNP Q25704
B	723	HIS	-	expression tag	UNP Q25704
B	724	HIS	-	expression tag	UNP Q25704
B	725	HIS	-	expression tag	UNP Q25704
B	726	HIS	-	expression tag	UNP Q25704
B	727	HIS	-	expression tag	UNP Q25704
B	728	HIS	-	expression tag	UNP Q25704

- Molecule 2 is 4-[[[(2-amino-4-oxo-3,4,7,8-tetrahydropteridin-6-yl)methyl]amino}-N-(1,3-thiazol-2-yl)benzenesulfonamide (three-letter code: XTZ) (formula: C₁₆H₁₆N₈O₃S₂).



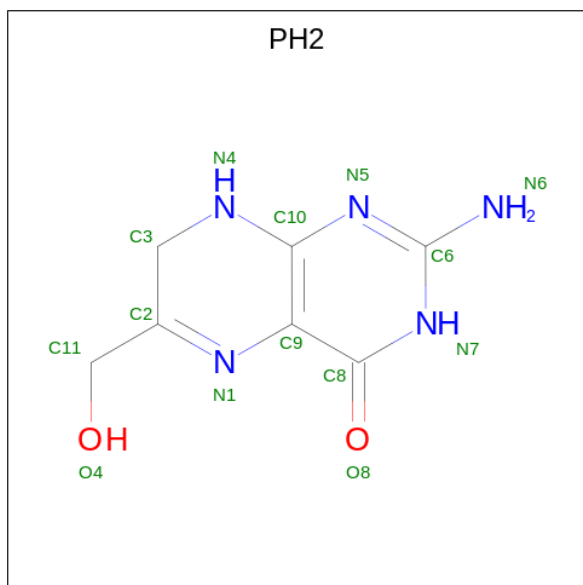
Mol	Chain	Residues	Atoms				ZeroOcc	AltConf	
			Total	C	N	O			S
2	A	1	29	16	8	3	2	0	0

Continued on next page...

Continued from previous page...

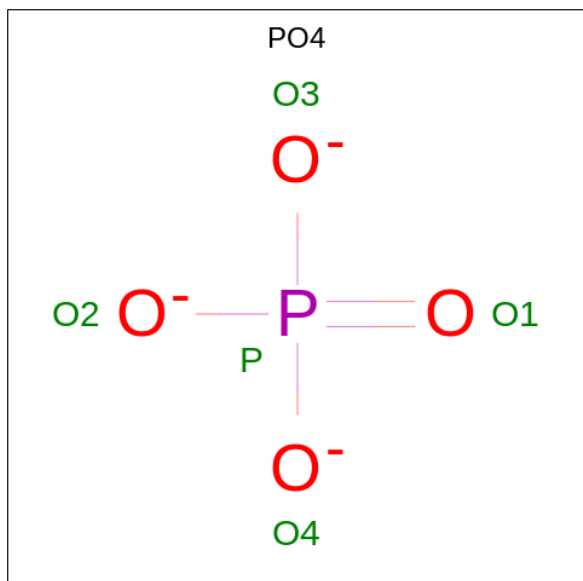
Mol	Chain	Residues	Atoms					ZeroOcc	AltConf
			Total	C	N	O	S		
2	B	1	29	16	8	3	2	0	0

- Molecule 3 is 2-AMINO-6-HYDROXYMETHYL-7,8-DIHYDRO-3H-PTERIDIN-4-ONE (three-letter code: PH2) (formula: C₇H₉N₅O₂).



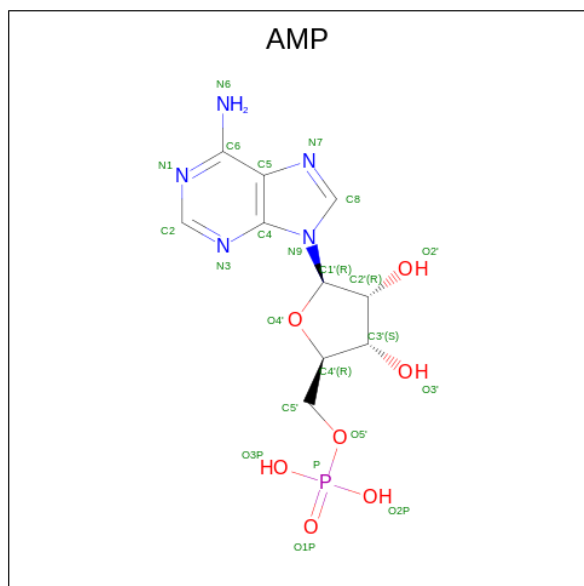
Mol	Chain	Residues	Atoms				ZeroOcc	AltConf
			Total	C	N	O		
3	A	1	14	7	5	2	0	0

- Molecule 4 is PHOSPHATE ION (three-letter code: PO4) (formula: O₄P).



Mol	Chain	Residues	Atoms	ZeroOcc	AltConf
4	A	1	Total O P 5 4 1	0	0
4	A	1	Total O P 5 4 1	0	0
4	A	1	Total O P 5 4 1	0	0

- Molecule 5 is ADENOSINE MONOPHOSPHATE (three-letter code: AMP) (formula: C₁₀H₁₄N₅O₇P).



Mol	Chain	Residues	Atoms	ZeroOcc	AltConf
5	A	1	Total C N O P 23 10 5 7 1	0	0
5	B	1	Total C N O P 23 10 5 7 1	0	0

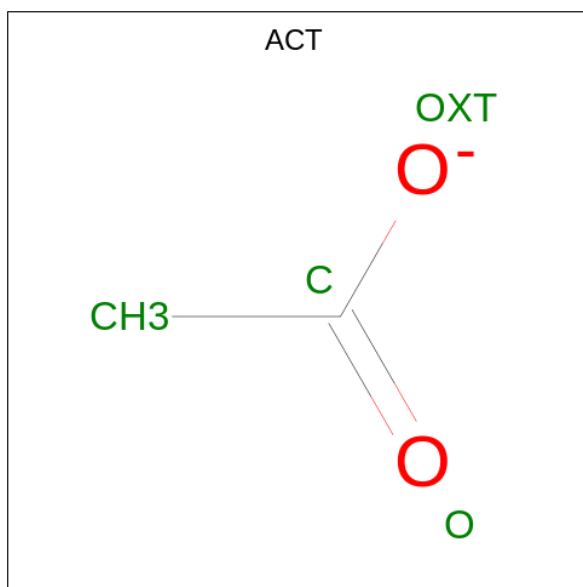
- Molecule 6 is MAGNESIUM ION (three-letter code: MG) (formula: Mg).

Mol	Chain	Residues	Atoms	ZeroOcc	AltConf
6	A	1	Total Mg 1 1	0	0
6	B	1	Total Mg 1 1	0	0

- Molecule 7 is CALCIUM ION (three-letter code: CA) (formula: Ca).

Mol	Chain	Residues	Atoms	ZeroOcc	AltConf
7	A	1	Total Ca 1 1	0	0
7	B	1	Total Ca 1 1	0	0

- Molecule 8 is ACETATE ION (three-letter code: ACT) (formula: C₂H₃O₂).



Mol	Chain	Residues	Atoms	ZeroOcc	AltConf
8	A	1	Total C O 4 2 2	0	0
8	A	1	Total C O 4 2 2	0	0
8	B	1	Total C O 4 2 2	0	0
8	B	1	Total C O 4 2 2	0	0
8	B	1	Total C O 4 2 2	0	0

- Molecule 9 is water.

Mol	Chain	Residues	Atoms	ZeroOcc	AltConf
9	A	204	Total O 204 204	0	0
9	B	122	Total O 122 122	0	0

4 Data and refinement statistics i

Property	Value	Source
Space group	P 21 21 21	Depositor
Cell constants a, b, c, α , β , γ	99.15Å 136.96Å 137.11Å 90.00° 90.00° 90.00°	Depositor
Resolution (Å)	32.66 – 2.65 32.64 – 2.65	Depositor EDS
% Data completeness (in resolution range)	85.8 (32.66-2.65) 85.8 (32.64-2.65)	Depositor EDS
R_{merge}	0.05	Depositor
R_{sym}	(Not available)	Depositor
$\langle I/\sigma(I) \rangle$ ¹	4.49 (at 2.64Å)	Xtrriage
Refinement program	REFMAC 5.8.0238	Depositor
R, R_{free}	0.196 , 0.233 0.194 , 0.226	Depositor DCC
R_{free} test set	4839 reflections (10.28%)	wwPDB-VP
Wilson B-factor (Å ²)	28.9	Xtrriage
Anisotropy	0.263	Xtrriage
Bulk solvent k_{sol} (e/Å ³), B_{sol} (Å ²)	0.35 , 60.4	EDS
L-test for twinning ²	$\langle L \rangle = 0.49$, $\langle L^2 \rangle = 0.33$	Xtrriage
Estimated twinning fraction	0.007 for -h,l,k	Xtrriage
F_o, F_c correlation	0.92	EDS
Total number of atoms	9483	wwPDB-VP
Average B, all atoms (Å ²)	43.0	wwPDB-VP

Xtrriage's analysis on translational NCS is as follows: *The largest off-origin peak in the Patterson function is 3.66% of the height of the origin peak. No significant pseudotranslation is detected.*

¹Intensities estimated from amplitudes.

²Theoretical values of $\langle |L| \rangle$, $\langle L^2 \rangle$ for acentric reflections are 0.5, 0.333 respectively for untwinned datasets, and 0.375, 0.2 for perfectly twinned datasets.

5 Model quality [i](#)

5.1 Standard geometry [i](#)

Bond lengths and bond angles in the following residue types are not validated in this section: PO4, CA, XTZ, AMP, PH2, ACT, MG

The Z score for a bond length (or angle) is the number of standard deviations the observed value is removed from the expected value. A bond length (or angle) with $|Z| > 5$ is considered an outlier worth inspection. RMSZ is the root-mean-square of all Z scores of the bond lengths (or angles).

Mol	Chain	Bond lengths		Bond angles	
		RMSZ	# Z >5	RMSZ	# Z >5
1	A	0.67	0/4677	0.81	0/6312
1	B	0.67	0/4461	0.79	0/6015
All	All	0.67	0/9138	0.80	0/12327

There are no bond length outliers.

There are no bond angle outliers.

There are no chirality outliers.

There are no planarity outliers.

5.2 Too-close contacts [i](#)

In the following table, the Non-H and H(model) columns list the number of non-hydrogen atoms and hydrogen atoms in the chain respectively. The H(added) column lists the number of hydrogen atoms added and optimized by MolProbity. The Clashes column lists the number of clashes within the asymmetric unit, whereas Symm-Clashes lists symmetry-related clashes.

Mol	Chain	Non-H	H(model)	H(added)	Clashes	Symm-Clashes
1	A	4604	0	4698	83	0
1	B	4396	0	4497	72	0
2	A	29	0	16	3	0
2	B	29	0	16	2	0
3	A	14	0	9	1	0
4	A	15	0	0	2	0
5	A	23	0	12	0	0
5	B	23	0	12	0	0
6	A	1	0	0	0	0
6	B	1	0	0	0	0
7	A	1	0	0	0	0

Continued on next page...

Continued from previous page...

Mol	Chain	Non-H	H(model)	H(added)	Clashes	Symm-Clashes
7	B	1	0	0	0	0
8	A	8	0	6	0	0
8	B	12	0	9	6	0
9	A	204	0	0	8	0
9	B	122	0	0	3	0
All	All	9483	0	9275	150	0

The all-atom clashscore is defined as the number of clashes found per 1000 atoms (including hydrogen atoms). The all-atom clashscore for this structure is 8.

The worst 5 of 150 close contacts within the same asymmetric unit are listed below, sorted by their clash magnitude.

Atom-1	Atom-2	Interatomic distance (Å)	Clash overlap (Å)
1:A:107:CYS:SG	1:A:171:LYS:HE3	1.87	1.14
1:B:107:CYS:SG	1:B:171:LYS:NZ	2.26	1.08
1:A:341:LYS:NZ	1:A:345:LEU:O	1.93	1.01
1:A:107:CYS:SG	1:A:171:LYS:CE	2.57	0.92
2:B:801:XTZ:H6	8:B:802:ACT:H1	1.66	0.77

There are no symmetry-related clashes.

5.3 Torsion angles [i](#)

5.3.1 Protein backbone [i](#)

In the following table, the Percentiles column shows the percent Ramachandran outliers of the chain as a percentile score with respect to all X-ray entries followed by that with respect to entries of similar resolution.

The Analysed column shows the number of residues for which the backbone conformation was analysed, and the total number of residues.

Mol	Chain	Analysed	Favoured	Allowed	Outliers	Percentiles	
1	A	542/728 (74%)	509 (94%)	30 (6%)	3 (1%)	25	37
1	B	516/728 (71%)	485 (94%)	30 (6%)	1 (0%)	47	64
All	All	1058/1456 (73%)	994 (94%)	60 (6%)	4 (0%)	34	48

All (4) Ramachandran outliers are listed below:

Mol	Chain	Res	Type
1	A	471	VAL
1	A	444	PRO
1	A	397	VAL
1	B	8	ILE

5.3.2 Protein sidechains [i](#)

In the following table, the Percentiles column shows the percent sidechain outliers of the chain as a percentile score with respect to all X-ray entries followed by that with respect to entries of similar resolution.

The Analysed column shows the number of residues for which the sidechain conformation was analysed, and the total number of residues.

Mol	Chain	Analysed	Rotameric	Outliers	Percentiles	
1	A	531/696 (76%)	488 (92%)	43 (8%)	11	17
1	B	506/696 (73%)	461 (91%)	45 (9%)	9	14
All	All	1037/1392 (74%)	949 (92%)	88 (8%)	10	15

5 of 88 residues with a non-rotameric sidechain are listed below:

Mol	Chain	Res	Type
1	B	173	PHE
1	B	417	ARG
1	B	220	PHE
1	B	310	VAL
1	B	449	ARG

Sometimes sidechains can be flipped to improve hydrogen bonding and reduce clashes. 5 of 25 such sidechains are listed below:

Mol	Chain	Res	Type
1	B	131	ASN
1	B	240	HIS
1	B	710	ASN
1	B	143	ASN
1	B	367	ASN

5.3.3 RNA [i](#)

There are no RNA molecules in this entry.

5.4 Non-standard residues in protein, DNA, RNA chains [i](#)

There are no non-standard protein/DNA/RNA residues in this entry.

5.5 Carbohydrates [i](#)

There are no monosaccharides in this entry.

5.6 Ligand geometry [i](#)

Of 17 ligands modelled in this entry, 4 are monoatomic - leaving 13 for Mogul analysis.

In the following table, the Counts columns list the number of bonds (or angles) for which Mogul statistics could be retrieved, the number of bonds (or angles) that are observed in the model and the number of bonds (or angles) that are defined in the Chemical Component Dictionary. The Link column lists molecule types, if any, to which the group is linked. The Z score for a bond length (or angle) is the number of standard deviations the observed value is removed from the expected value. A bond length (or angle) with $|Z| > 2$ is considered an outlier worth inspection. RMSZ is the root-mean-square of all Z scores of the bond lengths (or angles).

Mol	Type	Chain	Res	Link	Bond lengths			Bond angles		
					Counts	RMSZ	# Z > 2	Counts	RMSZ	# Z > 2
8	ACT	A	808	-	3,3,3	0.97	0	3,3,3	0.67	0
8	ACT	A	807	-	3,3,3	1.08	0	3,3,3	0.58	0
3	PH2	A	802	-	10,15,15	1.33	1 (10%)	10,21,21	3.27	5 (50%)
5	AMP	A	804	6	22,25,25	0.64	0	25,38,38	0.86	1 (4%)
5	AMP	B	803	6	22,25,25	0.64	0	25,38,38	0.98	2 (8%)
8	ACT	B	802	-	3,3,3	0.95	0	3,3,3	0.97	0
4	PO4	A	810	-	4,4,4	0.43	0	6,6,6	0.44	0
4	PO4	A	809	-	4,4,4	0.67	0	6,6,6	0.44	0
4	PO4	A	803	-	4,4,4	0.95	0	6,6,6	0.51	0
2	XTZ	B	801	-	26,32,32	2.40	2 (7%)	28,46,46	1.96	8 (28%)
8	ACT	B	807	-	3,3,3	1.09	0	3,3,3	0.69	0
8	ACT	B	806	-	3,3,3	1.05	0	3,3,3	0.67	0
2	XTZ	A	801	-	26,32,32	2.32	3 (11%)	28,46,46	2.84	6 (21%)

In the following table, the Chirals column lists the number of chiral outliers, the number of chiral centers analysed, the number of these observed in the model and the number defined in the Chemical Component Dictionary. Similar counts are reported in the Torsion and Rings columns. '-' means no outliers of that kind were identified.

Mol	Type	Chain	Res	Link	Chirals	Torsions	Rings
3	PH2	A	802	-	-	0/0/11/11	0/2/2/2

Continued on next page...

Continued from previous page...

Mol	Type	Chain	Res	Link	Chirals	Torsions	Rings
5	AMP	A	804	6	-	3/6/26/26	0/3/3/3
5	AMP	B	803	6	-	5/6/26/26	0/3/3/3
2	XTZ	B	801	-	-	3/12/25/25	0/4/4/4
2	XTZ	A	801	-	-	7/12/25/25	0/4/4/4

The worst 5 of 6 bond length outliers are listed below:

Mol	Chain	Res	Type	Atoms	Z	Observed(Å)	Ideal(Å)
2	B	801	XTZ	C9-S1	-10.97	1.59	1.76
2	A	801	XTZ	C9-S1	-10.15	1.60	1.76
2	A	801	XTZ	C3-C2	3.43	1.48	1.40
3	A	802	PH2	C8-N7	3.23	1.38	1.33
2	B	801	XTZ	C3-C2	3.14	1.47	1.40

The worst 5 of 22 bond angle outliers are listed below:

Mol	Chain	Res	Type	Atoms	Z	Observed(°)	Ideal(°)
2	A	801	XTZ	O2-S1-O1	-10.17	107.05	119.55
2	A	801	XTZ	C9-S1-N6	8.10	117.02	106.83
3	A	802	PH2	C10-C9-C8	7.55	119.47	114.53
2	B	801	XTZ	O2-S1-O1	-5.14	113.23	119.55
3	A	802	PH2	C9-C8-N7	-4.71	116.99	123.43

There are no chirality outliers.

5 of 18 torsion outliers are listed below:

Mol	Chain	Res	Type	Atoms
5	B	803	AMP	C5'-O5'-P-O2P
5	B	803	AMP	C5'-O5'-P-O3P
5	A	804	AMP	C3'-C4'-C5'-O5'
5	B	803	AMP	O4'-C4'-C5'-O5'
5	B	803	AMP	C3'-C4'-C5'-O5'

There are no ring outliers.

6 monomers are involved in 10 short contacts:

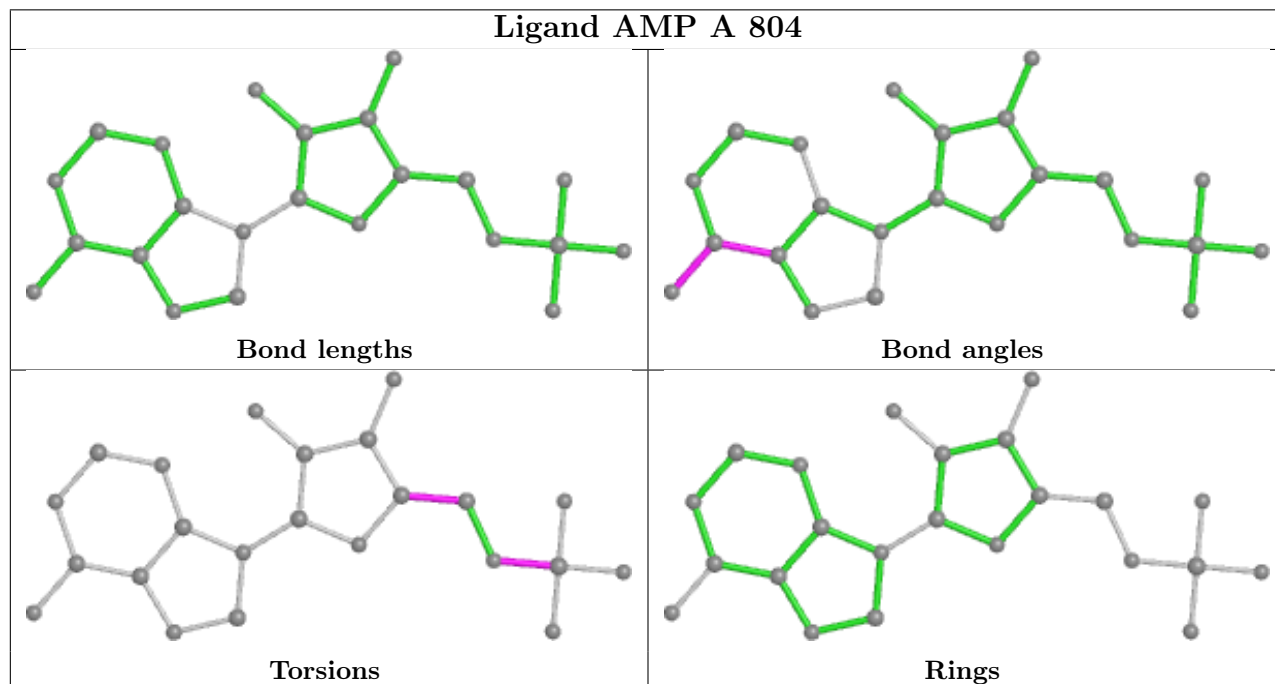
Mol	Chain	Res	Type	Clashes	Symm-Clashes
3	A	802	PH2	1	0
8	B	802	ACT	5	0
4	A	803	PO4	2	0

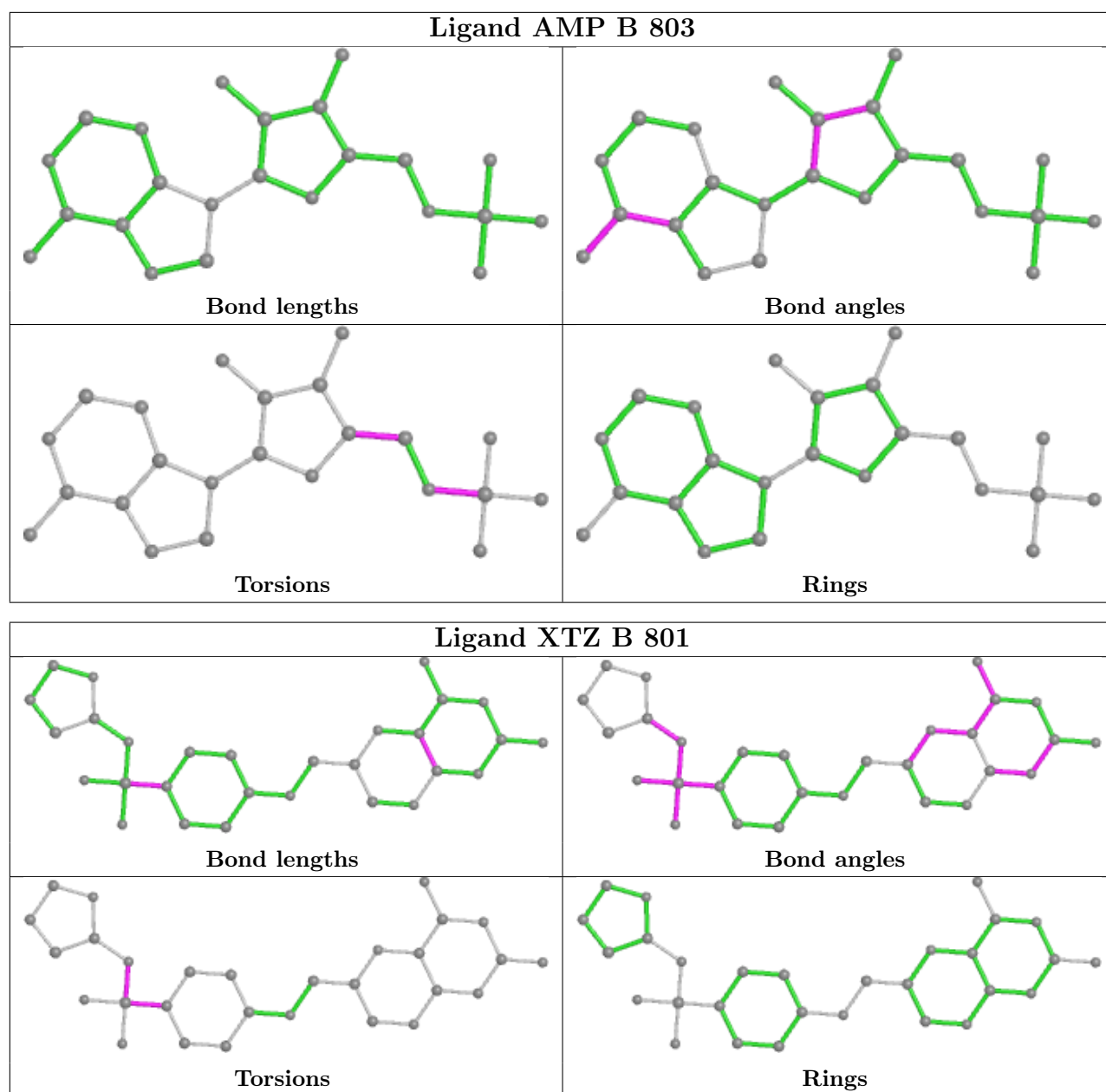
Continued on next page...

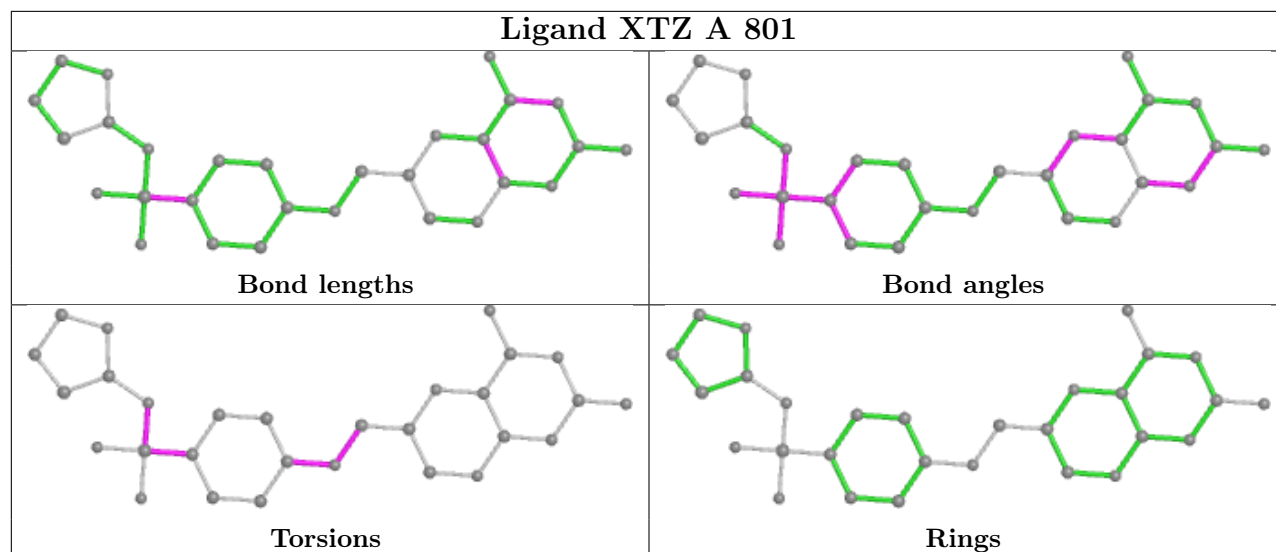
Continued from previous page...

Mol	Chain	Res	Type	Clashes	Symm-Clashes
2	B	801	XTZ	2	0
8	B	807	ACT	1	0
2	A	801	XTZ	3	0

The following is a two-dimensional graphical depiction of Mogul quality analysis of bond lengths, bond angles, torsion angles, and ring geometry for all instances of the Ligand of Interest. In addition, ligands with molecular weight > 250 and outliers as shown on the validation Tables will also be included. For torsion angles, if less than 5% of the Mogul distribution of torsion angles is within 10 degrees of the torsion angle in question, then that torsion angle is considered an outlier. Any bond that is central to one or more torsion angles identified as an outlier by Mogul will be highlighted in the graph. For rings, the root-mean-square deviation (RMSD) between the ring in question and similar rings identified by Mogul is calculated over all ring torsion angles. If the average RMSD is greater than 60 degrees and the minimal RMSD between the ring in question and any Mogul-identified rings is also greater than 60 degrees, then that ring is considered an outlier. The outliers are highlighted in purple. The color gray indicates Mogul did not find sufficient equivalents in the CSD to analyse the geometry.







5.7 Other polymers [i](#)

There are no such residues in this entry.

5.8 Polymer linkage issues [i](#)

There are no chain breaks in this entry.

6 Fit of model and data [i](#)

6.1 Protein, DNA and RNA chains [i](#)

In the following table, the column labelled ‘#RSRZ > 2’ contains the number (and percentage) of RSRZ outliers, followed by percent RSRZ outliers for the chain as percentile scores relative to all X-ray entries and entries of similar resolution. The OWAB column contains the minimum, median, 95th percentile and maximum values of the occupancy-weighted average B-factor per residue. The column labelled ‘Q < 0.9’ lists the number of (and percentage) of residues with an average occupancy less than 0.9.

Mol	Chain	Analysed	<RSRZ>	#RSRZ>2	OWAB(Å ²)	Q<0.9
1	A	558/728 (76%)	0.11	53 (9%) 8 6	6, 26, 100, 120	0
1	B	534/728 (73%)	0.24	57 (10%) 6 4	9, 48, 108, 120	0
All	All	1092/1456 (75%)	0.17	110 (10%) 7 4	6, 32, 105, 120	0

The worst 5 of 110 RSRZ outliers are listed below:

Mol	Chain	Res	Type	RSRZ
1	A	441	ILE	11.6
1	A	439	PHE	7.1
1	A	657	ASP	6.6
1	A	444	PRO	6.5
1	A	442	PRO	6.4

6.2 Non-standard residues in protein, DNA, RNA chains [i](#)

There are no non-standard protein/DNA/RNA residues in this entry.

6.3 Carbohydrates [i](#)

There are no monosaccharides in this entry.

6.4 Ligands [i](#)

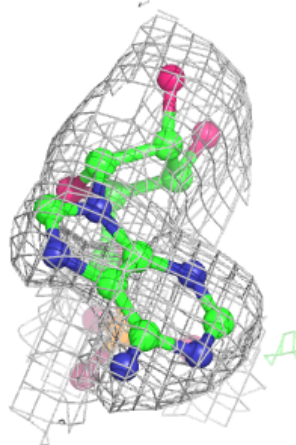
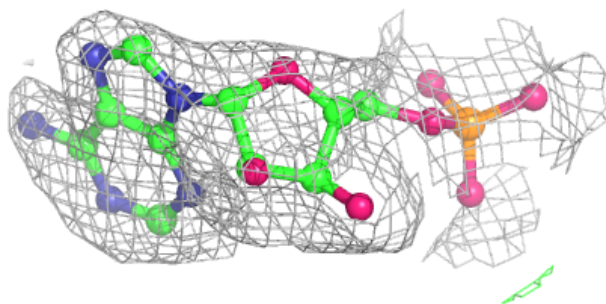
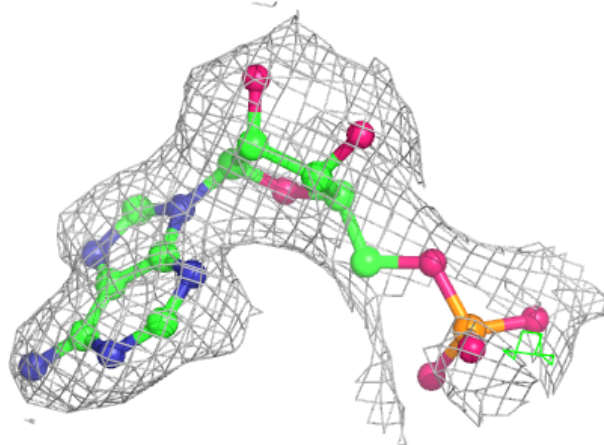
In the following table, the Atoms column lists the number of modelled atoms in the group and the number defined in the chemical component dictionary. The B-factors column lists the minimum, median, 95th percentile and maximum values of B factors of atoms in the group. The column labelled ‘Q < 0.9’ lists the number of atoms with occupancy less than 0.9.

Mol	Type	Chain	Res	Atoms	RSCC	RSR	B-factors(\AA^2)	Q<0.9
6	MG	B	804	1/1	0.58	0.17	58,58,58,58	0
5	AMP	B	803	23/23	0.86	0.16	64,72,91,94	0
8	ACT	A	808	4/4	0.86	0.23	51,51,55,59	0
2	XTZ	A	801	29/29	0.89	0.23	14,31,90,94	0
8	ACT	B	802	4/4	0.89	0.22	37,43,44,46	0
2	XTZ	B	801	29/29	0.90	0.19	13,31,65,67	0
3	PH2	A	802	14/14	0.91	0.17	42,49,59,61	0
4	PO4	A	803	5/5	0.92	0.17	56,56,63,69	0
6	MG	A	805	1/1	0.95	0.15	15,15,15,15	0
8	ACT	A	807	4/4	0.95	0.11	16,16,16,16	0
8	ACT	B	806	4/4	0.95	0.16	17,17,18,18	0
5	AMP	A	804	23/23	0.96	0.19	24,31,49,53	0
4	PO4	A	809	5/5	0.97	0.22	55,56,57,61	0
4	PO4	A	810	5/5	0.97	0.21	63,65,69,75	0
8	ACT	B	807	4/4	0.98	0.17	28,28,28,29	0
7	CA	B	805	1/1	0.99	0.03	85,85,85,85	0
7	CA	A	806	1/1	0.99	0.09	18,18,18,18	0

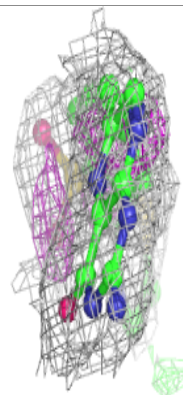
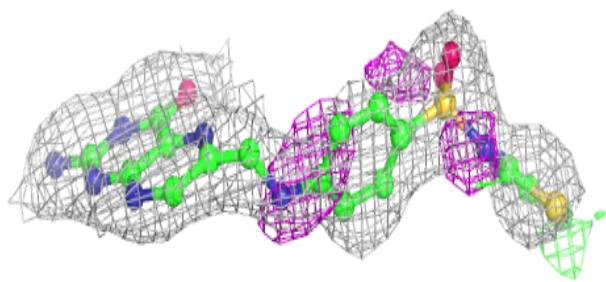
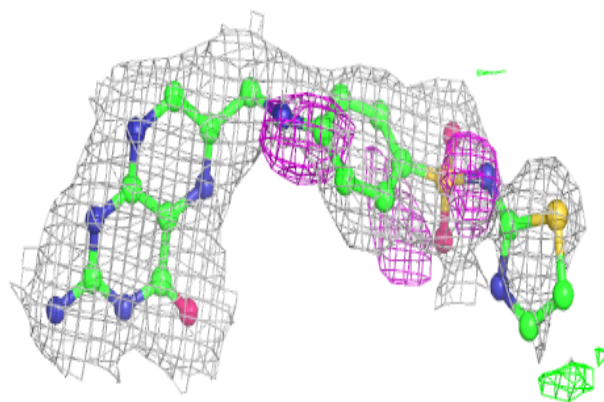
The following is a graphical depiction of the model fit to experimental electron density of all instances of the Ligand of Interest. In addition, ligands with molecular weight > 250 and outliers as shown on the geometry validation Tables will also be included. Each fit is shown from different orientation to approximate a three-dimensional view.

Electron density around AMP B 803:

$2mF_o-DF_c$ (at 0.7 rmsd) in gray
 mF_o-DF_c (at 3 rmsd) in purple (negative)
and green (positive)

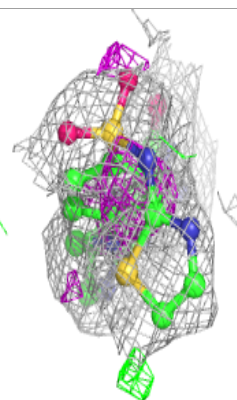
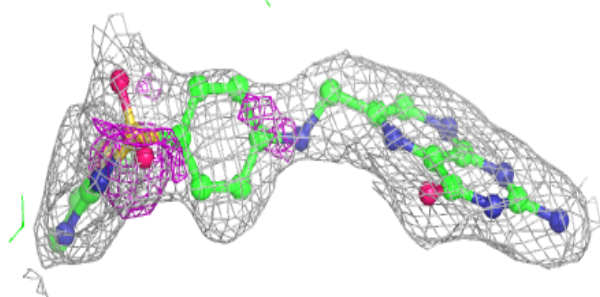
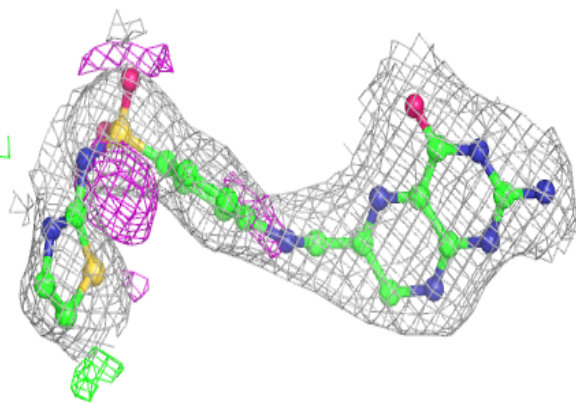
**Electron density around XTZ A 801:**

$2mF_o-DF_c$ (at 0.7 rmsd) in gray
 mF_o-DF_c (at 3 rmsd) in purple (negative)
and green (positive)

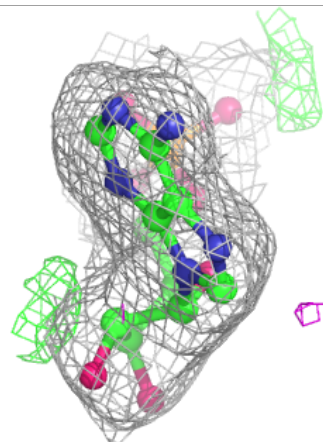
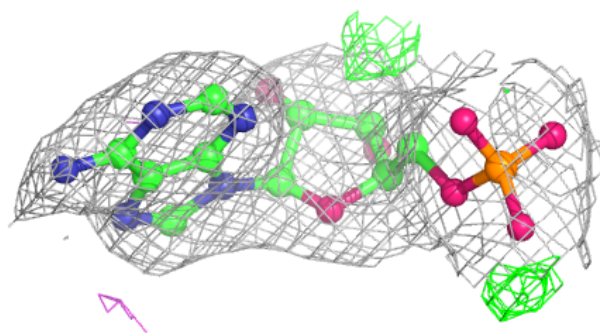
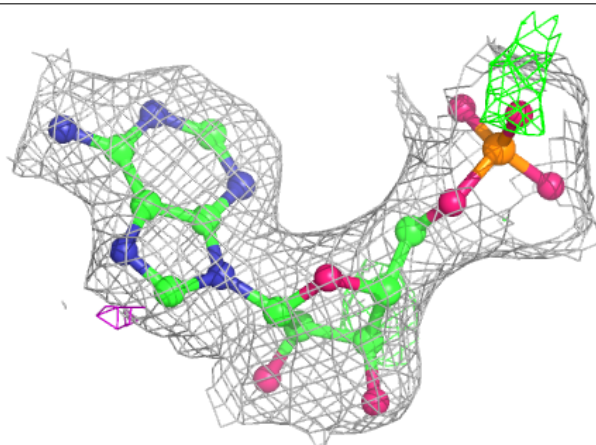


Electron density around XTZ B 801:

$2mF_o-DF_c$ (at 0.7 rmsd) in gray
 mF_o-DF_c (at 3 rmsd) in purple (negative)
and green (positive)

**Electron density around AMP A 804:**

$2mF_o-DF_c$ (at 0.7 rmsd) in gray
 mF_o-DF_c (at 3 rmsd) in purple (negative)
and green (positive)



6.5 Other polymers [i](#)

There are no such residues in this entry.