



wwPDB EM Validation Summary Report ⓘ

Jun 17, 2025 – 10:02 AM JST

PDB ID : 6J8G / pdb_00006j8g
EMDB ID : EMD-9781
Title : Structure of human voltage-gated sodium channel Nav1.7 in complex with auxiliary beta subunits, huwentoxin-IV and saxitoxin (Y1755 up)
Authors : Shen, H.; Liu, D.; Lei, J.; Yan, N.
Deposited on : 2019-01-19
Resolution : 3.20 Å(reported)

This is a wwPDB EM Validation Summary Report for a publicly released PDB entry.

We welcome your comments at validation@mail.wwpdb.org

A user guide is available at

<https://www.wwpdb.org/validation/2017/EMValidationReportHelp>
with specific help available everywhere you see the ⓘ symbol.

The types of validation reports are described at

<http://www.wwpdb.org/validation/2017/FAQs#types>.

The following versions of software and data (see [references ⓘ](#)) were used in the production of this report:

EMDB validation analysis : 0.0.1.dev118
Mogul : 1.8.5 (274361), CSD as541be (2020)
MolProbity : 4-5-2 with Phenix2.0rc1
buster-report : 1.1.7 (2018)
Percentile statistics : 20231227.v01 (using entries in the PDB archive December 27th 2023)
MapQ : 1.9.13
Ideal geometry (proteins) : Engh & Huber (2001)
Ideal geometry (DNA, RNA) : Parkinson et al. (1996)
Validation Pipeline (wwPDB-VP) : 2.44

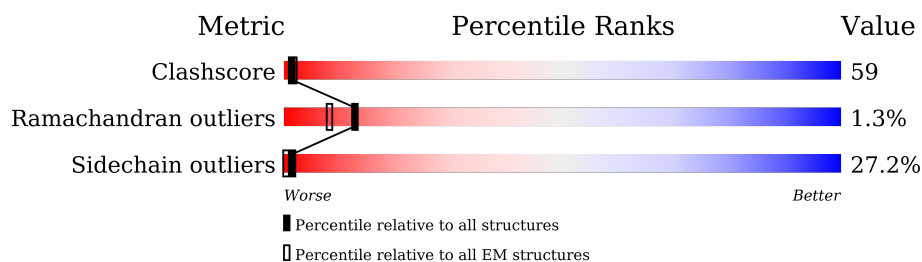
1 Overall quality at a glance

The following experimental techniques were used to determine the structure:

ELECTRON MICROSCOPY

The reported resolution of this entry is 3.20 Å.

Percentile scores (ranging between 0-100) for global validation metrics of the entry are shown in the following graphic. The table shows the number of entries on which the scores are based.



Metric	Whole archive (#Entries)	EM structures (#Entries)
Clashscore	210492	15764
Ramachandran outliers	207382	16835
Sidechain outliers	206894	16415

The table below summarises the geometric issues observed across the polymeric chains and their fit to the map. The red, orange, yellow and green segments of the bar indicate the fraction of residues that contain outliers for ≥ 3 , 2, 1 and 0 types of geometric quality criteria respectively. A grey segment represents the fraction of residues that are not modelled. The numeric value for each fraction is indicated below the corresponding segment, with a dot representing fractions $\leq 5\%$. The upper red bar (where present) indicates the fraction of residues that have poor fit to the EM map (all-atom inclusion $< 40\%$). The numeric value is given above the bar.

Mol	Chain	Length	Quality of chain
1	C	215	<div> <div>52%</div> <div>29% 20% 7% 44%</div> </div>
2	A	2031	<div> <div>7%</div> <div>19% 25% 11% 44%</div> </div>
3	B	218	<div> <div>6%</div> <div>24% 37% 17% 21%</div> </div>
4	D	2	<div> <div>50%</div> <div>100%</div> </div>
4	E	2	<div> <div>100%</div> </div>

2 Entry composition

There are 6 unique types of molecules in this entry. The entry contains 11763 atoms, of which 0 are hydrogens and 0 are deuteriums.

In the tables below, the AltConf column contains the number of residues with at least one atom in alternate conformation and the Trace column contains the number of residues modelled with at most 2 atoms.

- Molecule 1 is a protein called Sodium channel subunit beta-2.

Mol	Chain	Residues	Atoms					AltConf	Trace
1	C	120	Total	C	N	O	S	0	0
			980	614	173	182	11		

- Molecule 2 is a protein called Sodium channel protein type 9 subunit alpha.

Mol	Chain	Residues	Atoms					AltConf	Trace
2	A	1140	Total	C	N	O	S	0	0
			9192	6110	1438	1568	76		

There are 44 discrepancies between the modelled and reference sequences:

Chain	Residue	Modelled	Actual	Comment	Reference
A	-42	MET	-	expression tag	UNP Q15858
A	-41	ALA	-	expression tag	UNP Q15858
A	-40	SER	-	expression tag	UNP Q15858
A	-39	TRP	-	expression tag	UNP Q15858
A	-38	SER	-	expression tag	UNP Q15858
A	-37	HIS	-	expression tag	UNP Q15858
A	-36	PRO	-	expression tag	UNP Q15858
A	-35	GLN	-	expression tag	UNP Q15858
A	-34	PHE	-	expression tag	UNP Q15858
A	-33	GLU	-	expression tag	UNP Q15858
A	-32	LYS	-	expression tag	UNP Q15858
A	-31	GLY	-	expression tag	UNP Q15858
A	-30	GLY	-	expression tag	UNP Q15858
A	-29	GLY	-	expression tag	UNP Q15858
A	-28	ALA	-	expression tag	UNP Q15858
A	-27	ARG	-	expression tag	UNP Q15858
A	-26	GLY	-	expression tag	UNP Q15858
A	-25	GLY	-	expression tag	UNP Q15858
A	-24	SER	-	expression tag	UNP Q15858
A	-23	GLY	-	expression tag	UNP Q15858
A	-22	GLY	-	expression tag	UNP Q15858

Continued on next page...

Continued from previous page...

Chain	Residue	Modelled	Actual	Comment	Reference
A	-21	GLY	-	expression tag	UNP Q15858
A	-20	SER	-	expression tag	UNP Q15858
A	-19	TRP	-	expression tag	UNP Q15858
A	-18	SER	-	expression tag	UNP Q15858
A	-17	HIS	-	expression tag	UNP Q15858
A	-16	PRO	-	expression tag	UNP Q15858
A	-15	GLN	-	expression tag	UNP Q15858
A	-14	PHE	-	expression tag	UNP Q15858
A	-13	GLU	-	expression tag	UNP Q15858
A	-12	LYS	-	expression tag	UNP Q15858
A	-11	GLY	-	expression tag	UNP Q15858
A	-10	PHE	-	expression tag	UNP Q15858
A	-9	ASP	-	expression tag	UNP Q15858
A	-8	TYR	-	expression tag	UNP Q15858
A	-7	LYS	-	expression tag	UNP Q15858
A	-6	ASP	-	expression tag	UNP Q15858
A	-5	ASP	-	expression tag	UNP Q15858
A	-4	ASP	-	expression tag	UNP Q15858
A	-3	ASP	-	expression tag	UNP Q15858
A	-2	LYS	-	expression tag	UNP Q15858
A	-1	GLY	-	expression tag	UNP Q15858
A	0	THR	-	expression tag	UNP Q15858
A	406	LYS	GLU	variant	UNP Q15858

- Molecule 3 is a protein called Sodium channel subunit beta-1.

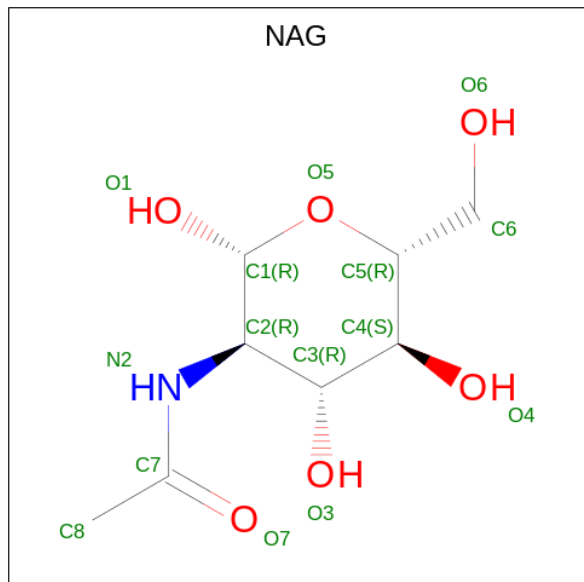
Mol	Chain	Residues	Atoms					AltConf	Trace
3	B	173	Total	C	N	O	S	0	0
			1416	902	232	272	10		

- Molecule 4 is an oligosaccharide called 2-acetamido-2-deoxy-beta-D-glucopyranose-(1-4)-2-acetamido-2-deoxy-beta-D-glucopyranose.



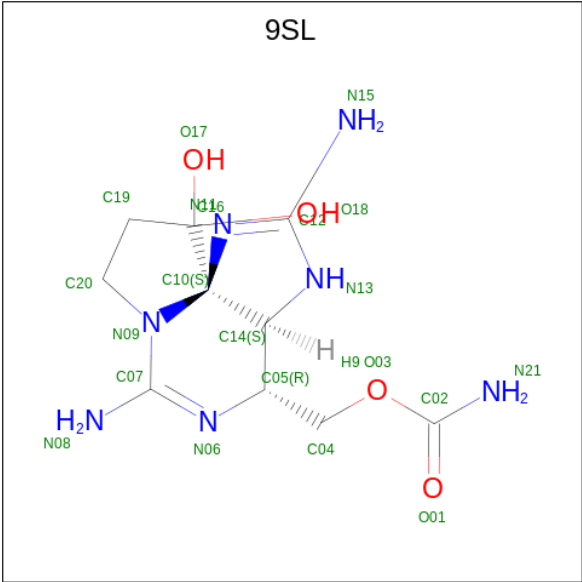
Mol	Chain	Residues	Atoms				AltConf	Trace
4	D	2	Total	C	N	O	0	0
			28	16	2	10		
4	E	2	Total	C	N	O	0	0
			28	16	2	10		

- Molecule 5 is 2-acetamido-2-deoxy-beta-D-glucopyranose (CCD ID: NAG) (formula: $C_8H_{15}NO_6$).



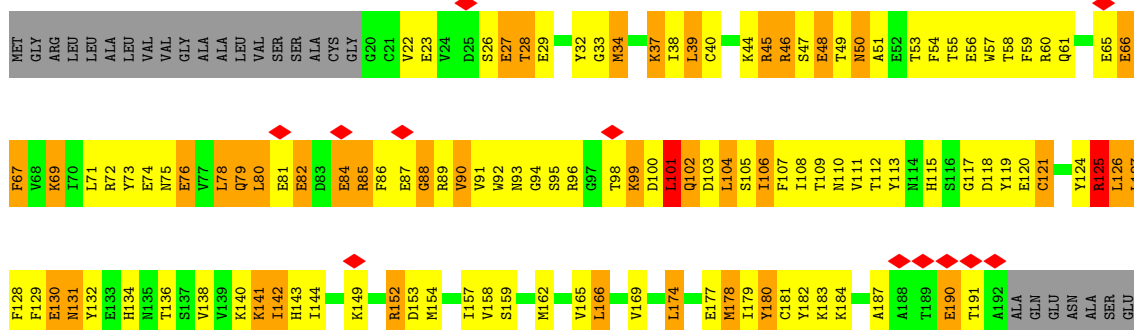
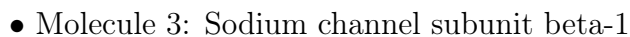
Mol	Chain	Residues	Atoms				AltConf
5	C	1	Total	C	N	O	0
			14	8	1	5	
5	A	1	Total	C	N	O	0
			14	8	1	5	
5	A	1	Total	C	N	O	0
			14	8	1	5	
5	B	1	Total	C	N	O	0
			14	8	1	5	
5	B	1	Total	C	N	O	0
			14	8	1	5	
5	B	1	Total	C	N	O	0
			14	8	1	5	
5	B	1	Total	C	N	O	0
			14	8	1	5	

- Molecule 6 is [(3aS,4R,10aS)-2,6-diamino-10,10-dihydroxy-3a,4,9,10-tetrahydro-3H,8H-pyrrolo[1,2-c]purin-4-yl]methyl carbamate (CCD ID: 9SL) (formula: $C_{10}H_{17}N_7O_4$).



Mol	Chain	Residues	Atoms				AltConf
			Total	C	N	O	
6	A	1	21	10	7	4	0

L1216	E1217	R1218	K1219	K1220	T1221	L1222	K1223	L1224	T1225	L1226	A1229	I1232	I1238	M1241	L1242	E1243	K1244	W1245	I1246	G1249	Y1250	K1251	F1254	T1255	W1260	L1261	D1262	F1263	L1264	I1265	V1266	D1267	V1268	S1269	L1270	L1273	V1274	A1275	N1276	T1277	L1278	G1279	Y1280	S1281	D1282	L1283	G1284	P1285	L1286	K1287	S1288							
SER	ASP	GLU	PRO	GLU	ALA	CYS	PHE	THR	ASP	L1226	ARG	THR	SER	CYS	GLN	VAL	ASN	ILE	GLU	SER	GLY	LYS	K1175	K1176	W1177	W1178	W1179	K1183	T1184	C1185	Y1186	K1187	I1188	V1189	E1190	H1191	S1192	W1193	F1194	L1200	M1201	L1202	L1203	L1204	S1205	S1206	L1209	E1212	D1213	D1213	L1214	Y1215						
THR	VAL	PRO	ILE	ALA	PRO	GLY	GLU	SER	ASP	GLU	ASN	ALA	GLU	LEU	SER	ASP	ASP	ASP	ASP	GLU	GLY	TYR	SER	LYS	VAL	VAL	ASN	ARG	SER	SER	SER	GLU	CYS	SER	THR	THR	VAL	ASP	PRO	PRO	GLY	GLU	GLY	GLY	GLY	ALA	GLU	GLU	PRO	GLU	THR	ASN						
L968	S969	S970	F971	S972	SER	ASP	ASN	ASN	THR	ALA	ASP	ASP	ASP	ASP	ASP	ASP	R837	R838	R839	R840	R841	F842	F843	K844	L845	A846	K847	S848	W849	P850	T851	L852	M853	M854	I858	S862	L866	G867	N868	L869	T870	L871	V872	L873	I879	A881	V882	V883	Q886	L887	K890	C895	V896	C897	K898			
F824	L825	ALA	ASP	VAL	GLU	GLY	L831	S832	R833	L834	R835	S836	F837	F838	R839	L840	R841	F842	F843	K844	L845	A846	K847	S848	W849	P850	T851	L852	M853	M854	I858	S862	L866	G867	N868	L869	T870	L871	V872	L873	I879	A881	V882	V883	Q886	L887	K890	C895	V896	C897	K898							
M761	A762	M763	E764	H765	H766	H767	M768	T769	E770	E771	K773	M774	V775	L776	N780	L781	V782	F783	I786	F787	A788	A789	E790	M791	V792	L793	K794	L795	I796	A797	M798	D799	P800	E801	E802	Y803	Q805	V806	G807	W808	N809	I810	F811	D812	S813	L814	I815	V816	T817	L818	S819	L820	V821	E822	L823			
GLU	GLU	LEU	GLU	GLU	SER	ARG	GLN	LYS	LYS	CYS	PRO	TRP	TYR	PHE	ALA	HIS	LYS	THR	ASN	C726	S727	F728	Y729	W730	I731	K732	F733	K734	K735	C736	I737	Y738	F739	I740	V741	M742	D743	P744	F745	V746	D747	L748	A749	I750	T751	C752	I754	V755	L756	M757	T758	L759	F760					
ASN	GLY	GLN	LEU	LEU	ARG	PRO	GLU	VAL	ILE	ILE	LYS	THR	SER	ASP	ASP	GLY	THR	THR	ASN	THR	ASN	THR	ASN	ILE	GLN	ILE	GLN	ALA	SER	ALA	ARG	ARG	VAL	ASP	ASP	CYS	ASN	ASN	ARG	GLN	VAL	VAL	ALA	SER	MET	VAL	ARG	ALA	ILE	THR	THR	ASN	THR	VAL				
ASN	GLU	SER	ARG	GLY	GLU	SER	LEU	PHE	VAL	VAL	HIS	PRO	GLN	LYS	GLU	ARG	ARG	ASN	ASN	ARG	ARG	LYS	LYS	LEU	PHE	GLN	ALA	ALA	ARG	ARG	VAL	ASP	MET	LEU	ASN	ASN	ASN	GLY	GLY	GLY	GLY	VAL	THR	THR	THR	ASP	ASP	ARG	ARG	ARG	GLY	GLY	ASP					
HIS	ARG	ARG	ALA	HIS	GLU	LYS	ARG	LEU	LEU	THR	PRO	ASN	GLN	LYS	GLU	ARG	PRO	ARG	ARG	ILE	ARG	ARG	LYS	LYS	LEU	LEU	GLN	ALA	ALA	ARG	ARG	VAL	ASP	ILE	GLY	GLY	SER	GLY	GLU	ASP	THR	THR	THR	THR	THR	THR	THR	THR	THR	THR	THR	THR	THR	THR	THR			
V401	A402	M403	A404	Y405	K406	E407	Q408	M409	Q410	A411	M412	I413	E414	E415	A416	K417	GLN	LYS	LYS	LYS	LYS	LYS	LYS	LYS	LEU	LEU	GLU	GLU	GLU	GLU	GLU	GLU	GLU	GLU	GLU	GLU	GLU	GLU	GLU	GLU	GLU	GLU	GLU	GLU	GLU	GLU	GLU	GLU	GLU	GLU	GLU	GLU	GLU	GLU	GLU			
I333	G334	R335	N336	P337	D338	Y339	G340	S341	S342	S343	F344	D345	T346	F347	S348	W349	L354	R355	R356	L357	M358	T359	Q360	D361	E364	N365	L366	K367	T370	L371	Y378	M379	I380	V383	V384	F387	L388	G389	S390	F391	Y392	L393	I394	N395	E396	G397	L398	A399	V400									
H273	K274	C275	F276	R277	N278	S279	L280	E281	N282	N283	E284	L285	L286	E287	S288	I289	M290	N291	T292	L293	E294	S295	E296	E297	D298	F299	R300	K301	Y302	F303	Y304	Y305	L306	E307	G308	S309	K310	D311	A312	L313	L314	C315	G316	F317	S318	T319	D320	S321	G322	Q323	C324	P325	E326	G327	T329	C330	V331	K332



LEU
ALA
ILE
THR
SER
GLU
SER
LYS
GLU
ASN
CYS
THR
GLY
VAL
GLN
VAL
ALA
GLU

- Molecule 4: 2-acetamido-2-deoxy-beta-D-glucopyranose-(1-4)-2-acetamido-2-deoxy-beta-D-glucopyranose



MAG1
MAG2

- Molecule 4: 2-acetamido-2-deoxy-beta-D-glucopyranose-(1-4)-2-acetamido-2-deoxy-beta-D-glucopyranose



MAG1
MAG2

4 Experimental information

Property	Value	Source
EM reconstruction method	SINGLE PARTICLE	Depositor
Imposed symmetry	POINT, Not provided	
Number of particles used	275630	Depositor
Resolution determination method	FSC 0.143 CUT-OFF	Depositor
CTF correction method	PHASE FLIPPING AND AMPLITUDE CORRECTION	Depositor
Microscope	FEI TITAN KRIOS	Depositor
Voltage (kV)	300	Depositor
Electron dose ($e^-/\text{\AA}^2$)	48	Depositor
Minimum defocus (nm)	Not provided	
Maximum defocus (nm)	Not provided	
Magnification	Not provided	
Image detector	GATAN K2 QUANTUM (4k x 4k)	Depositor
Maximum map value	0.410	Depositor
Minimum map value	-0.249	Depositor
Average map value	0.001	Depositor
Map value standard deviation	0.012	Depositor
Recommended contour level	0.07	Depositor
Map size (Å)	261.84, 261.84, 261.84	wwPDB
Map dimensions	240, 240, 240	wwPDB
Map angles (°)	90.0, 90.0, 90.0	wwPDB
Pixel spacing (Å)	1.091, 1.091, 1.091	Depositor

5 Model quality [i](#)

5.1 Standard geometry [i](#)

Bond lengths and bond angles in the following residue types are not validated in this section: NAG, 9SL

The Z score for a bond length (or angle) is the number of standard deviations the observed value is removed from the expected value. A bond length (or angle) with $|Z| > 5$ is considered an outlier worth inspection. RMSZ is the root-mean-square of all Z scores of the bond lengths (or angles).

Mol	Chain	Bond lengths		Bond angles	
		RMSZ	$\# Z > 5$	RMSZ	$\# Z > 5$
1	C	0.44	1/1002 (0.1%)	0.83	5/1354 (0.4%)
2	A	0.74	1/9417 (0.0%)	1.12	86/12761 (0.7%)
3	B	0.64	0/1442	0.98	3/1949 (0.2%)
All	All	0.70	2/11861 (0.0%)	1.08	94/16064 (0.6%)

All (2) bond length outliers are listed below:

Mol	Chain	Res	Type	Atoms	Z	Observed(Å)	Ideal(Å)
1	C	127	CYS	CB-SG	6.07	2.01	1.81
2	A	324	CYS	C-N	5.30	1.40	1.33

The worst 5 of 94 bond angle outliers are listed below:

Mol	Chain	Res	Type	Atoms	Z	Observed(°)	Ideal(°)
2	A	302	TYR	N-CA-C	12.27	124.73	111.36
2	A	925	CYS	N-CA-C	-11.99	94.36	110.55
2	A	304	TYR	N-CA-C	11.80	123.84	110.97
2	A	1378	GLN	N-CA-C	11.68	124.09	111.36
3	B	101	LEU	N-CA-C	10.23	122.02	111.07

There are no chirality outliers.

There are no planarity outliers.

5.2 Too-close contacts [i](#)

In the following table, the Non-H and H(model) columns list the number of non-hydrogen atoms and hydrogen atoms in the chain respectively. The H(added) column lists the number of hydrogen atoms added and optimized by MolProbity. The Clashes column lists the number of clashes within the asymmetric unit, whereas Symm-Clashes lists symmetry-related clashes.

Mol	Chain	Non-H	H(model)	H(added)	Clashes	Symm-Clashes
1	C	980	0	943	141	0
2	A	9192	0	9424	1081	0
3	B	1416	0	1379	175	0
4	D	28	0	25	0	0
4	E	28	0	25	6	0
5	A	28	0	26	2	0
5	B	56	0	52	0	0
5	C	14	0	13	5	0
6	A	21	0	0	2	0
All	All	11763	0	11887	1385	0

The all-atom clashscore is defined as the number of clashes found per 1000 atoms (including hydrogen atoms). The all-atom clashscore for this structure is 59.

The worst 5 of 1385 close contacts within the same asymmetric unit are listed below, sorted by their clash magnitude.

Atom-1	Atom-2	Interatomic distance (Å)	Clash overlap (Å)
2:A:1497:ILE:HG23	2:A:1572:TYR:CD2	1.39	1.50
2:A:849:TRP:CD1	2:A:850:PRO:HD2	1.46	1.49
2:A:1694:ILE:CD1	2:A:1703:LEU:HD12	1.47	1.40
2:A:737:ILE:CG2	2:A:797:ALA:HB2	1.52	1.38
2:A:174:ARG:HD3	2:A:182:THR:CG2	1.55	1.37

There are no symmetry-related clashes.

5.3 Torsion angles [i](#)

5.3.1 Protein backbone [i](#)

In the following table, the Percentiles column shows the percent Ramachandran outliers of the chain as a percentile score with respect to all PDB entries followed by that with respect to all EM entries.

The Analysed column shows the number of residues for which the backbone conformation was analysed, and the total number of residues.

Mol	Chain	Analysed	Favoured	Allowed	Outliers	Percentiles	
1	C	118/215 (55%)	110 (93%)	5 (4%)	3 (2%)	4	28
2	A	1132/2031 (56%)	1096 (97%)	20 (2%)	16 (1%)	9	40
3	B	171/218 (78%)	167 (98%)	4 (2%)	0	100	100

Continued on next page...

Continued from previous page...

Mol	Chain	Analysed	Favoured	Allowed	Outliers	Percentiles	
All	All	1421/2464 (58%)	1373 (97%)	29 (2%)	19 (1%)	13	41

5 of 19 Ramachandran outliers are listed below:

Mol	Chain	Res	Type
2	A	147	ASN
2	A	896	VAL
2	A	1431	LEU
2	A	841	ARG
2	A	844	LYS

5.3.2 Protein sidechains ⓘ

In the following table, the Percentiles column shows the percent sidechain outliers of the chain as a percentile score with respect to all PDB entries followed by that with respect to all EM entries.

The Analysed column shows the number of residues for which the sidechain conformation was analysed, and the total number of residues.

Mol	Chain	Analysed	Rotameric	Outliers	Percentiles	
1	C	113/193 (58%)	97 (86%)	16 (14%)	2	13
2	A	1018/1809 (56%)	738 (72%)	280 (28%)	0	1
3	B	157/190 (83%)	103 (66%)	54 (34%)	0	0
All	All	1288/2192 (59%)	938 (73%)	350 (27%)	1	1

5 of 350 residues with a non-rotameric sidechain are listed below:

Mol	Chain	Res	Type
2	A	1487	LYS
2	A	1704	LEU
2	A	1511	LEU
2	A	1573	TYR
3	B	37	LYS

Sometimes sidechains can be flipped to improve hydrogen bonding and reduce clashes. 5 of 33 such sidechains are listed below:

Mol	Chain	Res	Type
3	B	79	GLN
3	B	102	GLN

Continued on next page...

Continued from previous page...

Mol	Chain	Res	Type
3	B	143	HIS
2	A	774	ASN
2	A	766	HIS

5.3.3 RNA [i](#)

There are no RNA molecules in this entry.

5.4 Non-standard residues in protein, DNA, RNA chains [i](#)

There are no non-standard protein/DNA/RNA residues in this entry.

5.5 Carbohydrates [i](#)

4 monosaccharides are modelled in this entry.

In the following table, the Counts columns list the number of bonds (or angles) for which Mogul statistics could be retrieved, the number of bonds (or angles) that are observed in the model and the number of bonds (or angles) that are defined in the Chemical Component Dictionary. The Link column lists molecule types, if any, to which the group is linked. The Z score for a bond length (or angle) is the number of standard deviations the observed value is removed from the expected value. A bond length (or angle) with $|Z| > 2$ is considered an outlier worth inspection. RMSZ is the root-mean-square of all Z scores of the bond lengths (or angles).

Mol	Type	Chain	Res	Link	Bond lengths			Bond angles		
					Counts	RMSZ	# Z > 2	Counts	RMSZ	# Z > 2
4	NAG	D	1	2,4	14,14,15	0.44	0	17,19,21	0.98	1 (5%)
4	NAG	D	2	4	14,14,15	0.40	0	17,19,21	1.30	2 (11%)
4	NAG	E	1	2,4	14,14,15	0.38	0	17,19,21	1.08	2 (11%)
4	NAG	E	2	4	14,14,15	0.41	0	17,19,21	1.18	2 (11%)

In the following table, the Chirals column lists the number of chiral outliers, the number of chiral centers analysed, the number of these observed in the model and the number defined in the Chemical Component Dictionary. Similar counts are reported in the Torsion and Rings columns. '-' means no outliers of that kind were identified.

Mol	Type	Chain	Res	Link	Chirals	Torsions	Rings
4	NAG	D	1	2,4	-	1/6/23/26	0/1/1/1
4	NAG	D	2	4	-	4/6/23/26	0/1/1/1
4	NAG	E	1	2,4	-	6/6/23/26	0/1/1/1

Continued on next page...

Continued from previous page...

Mol	Type	Chain	Res	Link	Chirals	Torsions	Rings
4	NAG	E	2	4	-	4/6/23/26	0/1/1/1

There are no bond length outliers.

The worst 5 of 7 bond angle outliers are listed below:

Mol	Chain	Res	Type	Atoms	Z	Observed(°)	Ideal(°)
4	E	1	NAG	O5-C1-C2	-3.09	106.40	111.29
4	E	2	NAG	C1-O5-C5	-3.04	108.07	112.19
4	D	2	NAG	C1-O5-C5	2.69	115.83	112.19
4	E	2	NAG	O5-C5-C6	2.64	111.34	107.20
4	D	2	NAG	C2-N2-C7	-2.61	119.19	122.90

There are no chirality outliers.

5 of 15 torsion outliers are listed below:

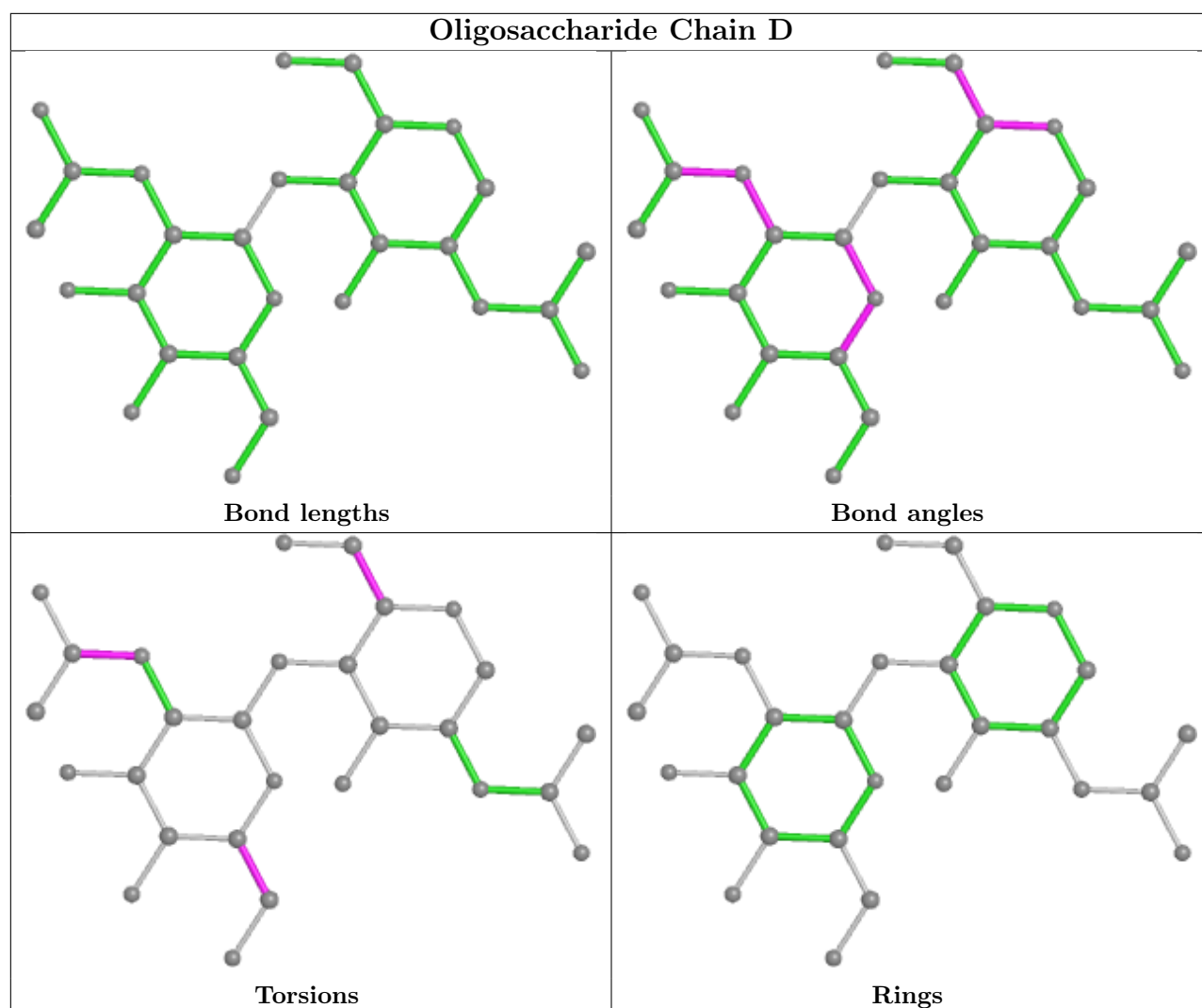
Mol	Chain	Res	Type	Atoms
4	E	1	NAG	C8-C7-N2-C2
4	E	1	NAG	O7-C7-N2-C2
4	D	2	NAG	O5-C5-C6-O6
4	E	2	NAG	C4-C5-C6-O6
4	D	2	NAG	C4-C5-C6-O6

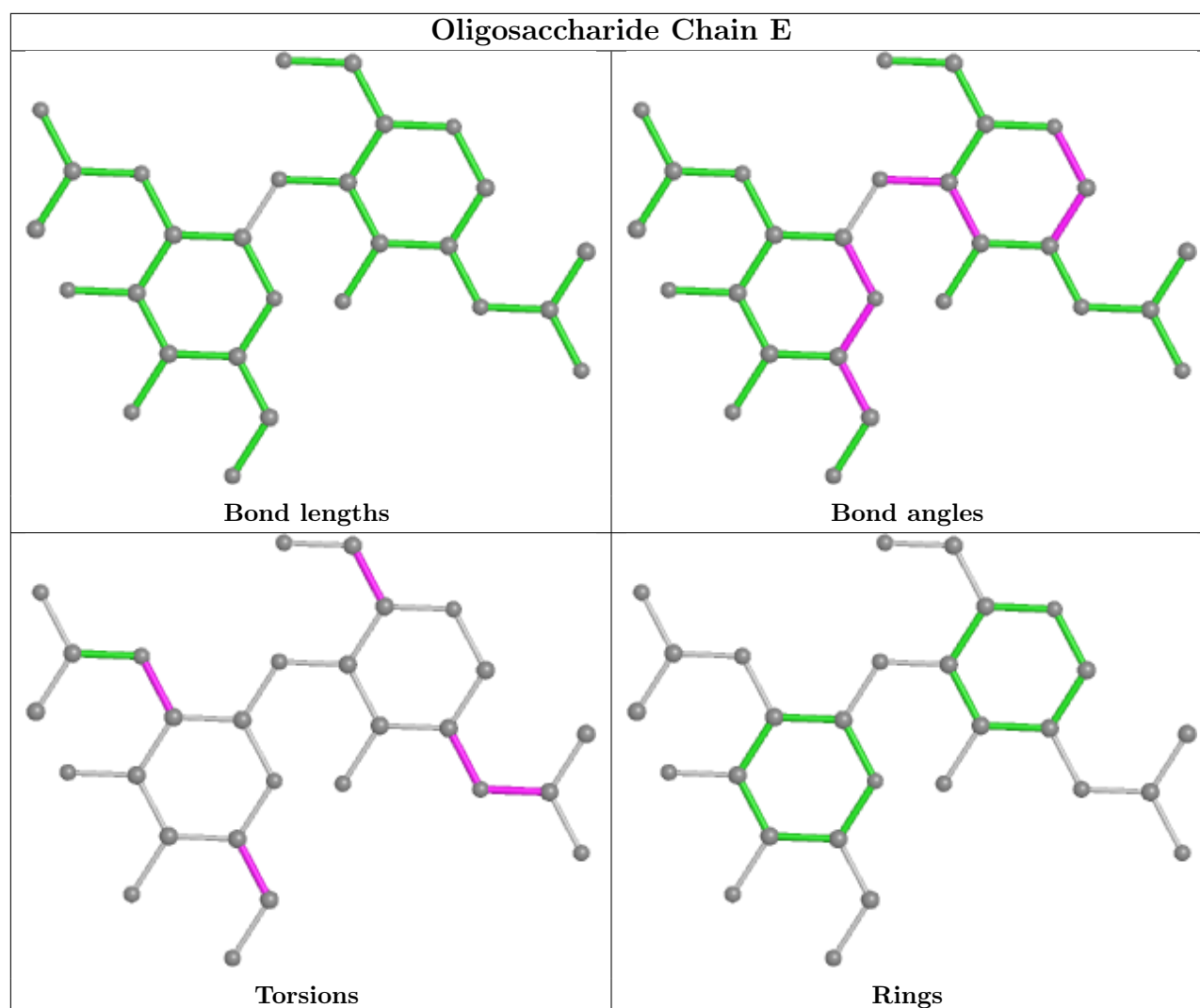
There are no ring outliers.

2 monomers are involved in 6 short contacts:

Mol	Chain	Res	Type	Clashes	Symm-Clashes
4	E	1	NAG	4	0
4	E	2	NAG	2	0

The following is a two-dimensional graphical depiction of Mogul quality analysis of bond lengths, bond angles, torsion angles, and ring geometry for oligosaccharide.





5.6 Ligand geometry [i](#)

8 ligands are modelled in this entry.

In the following table, the Counts columns list the number of bonds (or angles) for which Mogul statistics could be retrieved, the number of bonds (or angles) that are observed in the model and the number of bonds (or angles) that are defined in the Chemical Component Dictionary. The Link column lists molecule types, if any, to which the group is linked. The Z score for a bond length (or angle) is the number of standard deviations the observed value is removed from the expected value. A bond length (or angle) with $|Z| > 2$ is considered an outlier worth inspection. RMSZ is the root-mean-square of all Z scores of the bond lengths (or angles).

Mol	Type	Chain	Res	Link	Bond lengths			Bond angles		
					Counts	RMSZ	$\# Z > 2$	Counts	RMSZ	$\# Z > 2$
5	NAG	B	303	3	14,14,15	0.34	0	17,19,21	0.49	0
5	NAG	A	2006	2	14,14,15	0.35	0	17,19,21	0.36	0
6	9SL	A	2007	-	17,23,23	3.58	8 (47%)	13,37,37	3.03	6 (46%)

Mol	Type	Chain	Res	Link	Bond lengths			Bond angles		
					Counts	RMSZ	# Z > 2	Counts	RMSZ	# Z > 2
5	NAG	C	301	1	14,14,15	0.34	0	17,19,21	0.37	0
5	NAG	A	2005	2	14,14,15	2.61	1 (7%)	17,19,21	2.30	2 (11%)
5	NAG	B	301	3	14,14,15	0.44	0	17,19,21	1.10	0
5	NAG	B	304	3	14,14,15	0.37	0	17,19,21	0.37	0
5	NAG	B	302	3	14,14,15	0.35	0	17,19,21	0.46	0

In the following table, the Chirals column lists the number of chiral outliers, the number of chiral centers analysed, the number of these observed in the model and the number defined in the Chemical Component Dictionary. Similar counts are reported in the Torsion and Rings columns. '-' means no outliers of that kind were identified.

Mol	Type	Chain	Res	Link	Chirals	Torsions	Rings
5	NAG	B	303	3	-	2/6/23/26	0/1/1/1
5	NAG	A	2006	2	-	2/6/23/26	0/1/1/1
6	9SL	A	2007	-	-	4/5/53/53	0/3/3/3
5	NAG	C	301	1	-	2/6/23/26	0/1/1/1
5	NAG	A	2005	2	-	2/6/23/26	0/1/1/1
5	NAG	B	301	3	-	6/6/23/26	0/1/1/1
5	NAG	B	304	3	-	2/6/23/26	0/1/1/1
5	NAG	B	302	3	-	2/6/23/26	0/1/1/1

The worst 5 of 9 bond length outliers are listed below:

Mol	Chain	Res	Type	Atoms	Z	Observed(Å)	Ideal(Å)
5	A	2005	NAG	C1-C2	9.63	1.66	1.52
6	A	2007	9SL	C12-N13	8.73	1.49	1.35
6	A	2007	9SL	C07-N08	6.03	1.45	1.34
6	A	2007	9SL	C02-N21	5.89	1.44	1.33
6	A	2007	9SL	C12-N15	4.53	1.45	1.34

The worst 5 of 8 bond angle outliers are listed below:

Mol	Chain	Res	Type	Atoms	Z	Observed(°)	Ideal(°)
5	A	2005	NAG	C1-O5-C5	-8.24	101.03	112.19
6	A	2007	9SL	O03-C02-N21	7.83	120.80	111.08
5	A	2005	NAG	O5-C1-C2	-4.59	104.05	111.29
6	A	2007	9SL	O01-C02-N21	-4.22	118.55	125.51
6	A	2007	9SL	N09-C07-N06	-3.32	120.80	125.42

There are no chirality outliers.

5 of 22 torsion outliers are listed below:

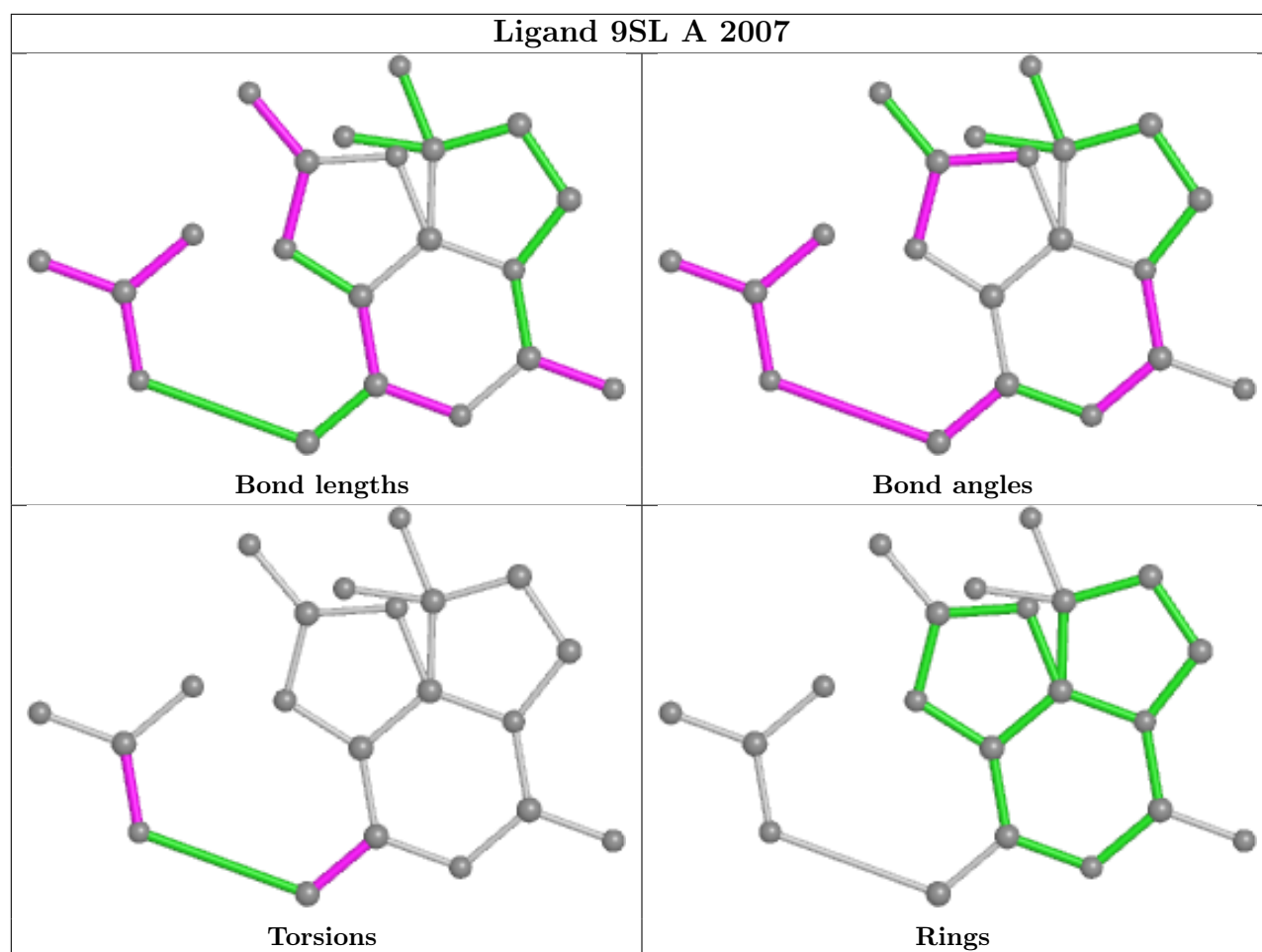
Mol	Chain	Res	Type	Atoms
5	B	301	NAG	C8-C7-N2-C2
5	B	301	NAG	O7-C7-N2-C2
6	A	2007	9SL	O01-C02-O03-C04
6	A	2007	9SL	N21-C02-O03-C04
6	A	2007	9SL	O03-C04-C05-N06

There are no ring outliers.

4 monomers are involved in 9 short contacts:

Mol	Chain	Res	Type	Clashes	Symm-Clashes
5	A	2006	NAG	1	0
6	A	2007	9SL	2	0
5	C	301	NAG	5	0
5	A	2005	NAG	1	0

The following is a two-dimensional graphical depiction of Mogul quality analysis of bond lengths, bond angles, torsion angles, and ring geometry for all instances of the Ligand of Interest. In addition, ligands with molecular weight > 250 and outliers as shown on the validation Tables will also be included. For torsion angles, if less than 5% of the Mogul distribution of torsion angles is within 10 degrees of the torsion angle in question, then that torsion angle is considered an outlier. Any bond that is central to one or more torsion angles identified as an outlier by Mogul will be highlighted in the graph. For rings, the root-mean-square deviation (RMSD) between the ring in question and similar rings identified by Mogul is calculated over all ring torsion angles. If the average RMSD is greater than 60 degrees and the minimal RMSD between the ring in question and any Mogul-identified rings is also greater than 60 degrees, then that ring is considered an outlier. The outliers are highlighted in purple. The color gray indicates Mogul did not find sufficient equivalents in the CSD to analyse the geometry.



5.7 Other polymers [i](#)

There are no such residues in this entry.

5.8 Polymer linkage issues [i](#)

There are no chain breaks in this entry.

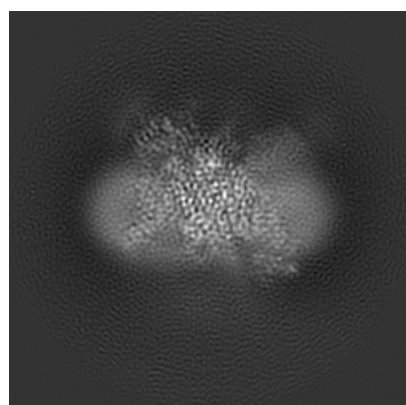
6 Map visualisation [i](#)

This section contains visualisations of the EMDB entry EMD-9781. These allow visual inspection of the internal detail of the map and identification of artifacts.

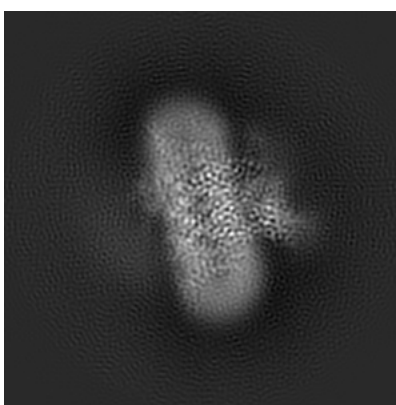
No raw map or half-maps were deposited for this entry and therefore no images, graphs, etc. pertaining to the raw map can be shown.

6.1 Orthogonal projections [i](#)

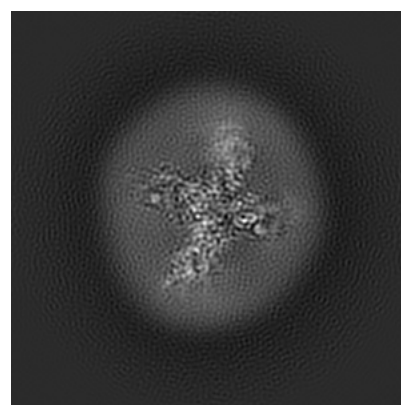
6.1.1 Primary map



X



Y

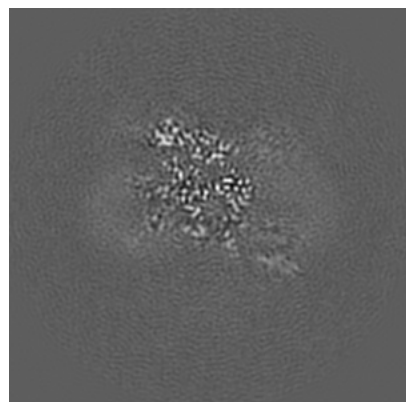


Z

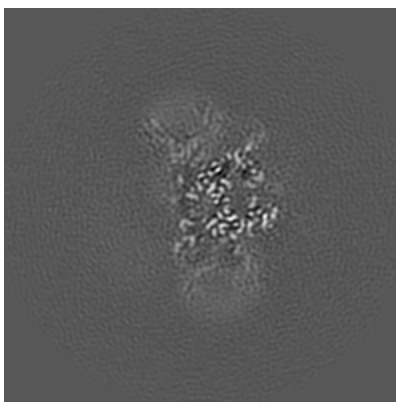
The images above show the map projected in three orthogonal directions.

6.2 Central slices [i](#)

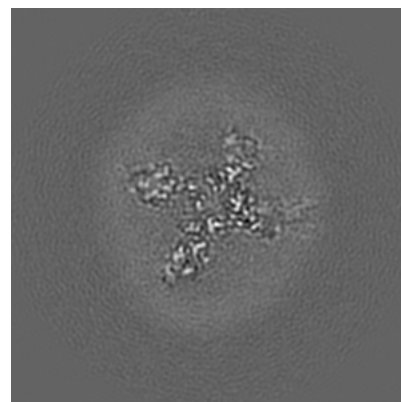
6.2.1 Primary map



X Index: 120



Y Index: 120

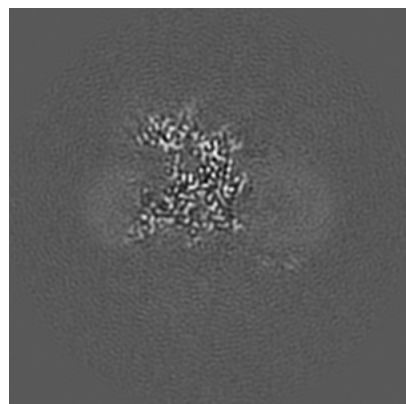


Z Index: 120

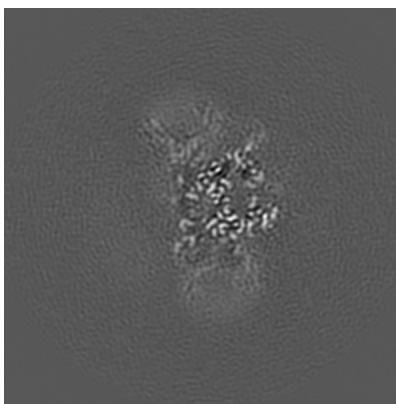
The images above show central slices of the map in three orthogonal directions.

6.3 Largest variance slices [i](#)

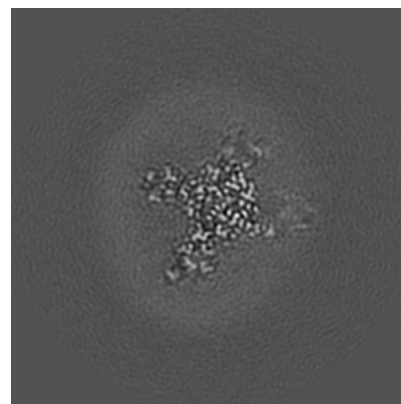
6.3.1 Primary map



X Index: 112



Y Index: 120

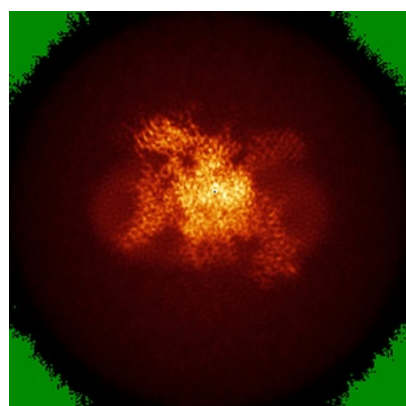


Z Index: 127

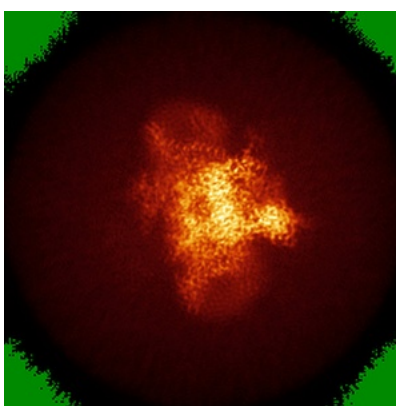
The images above show the largest variance slices of the map in three orthogonal directions.

6.4 Orthogonal standard-deviation projections (False-color) [i](#)

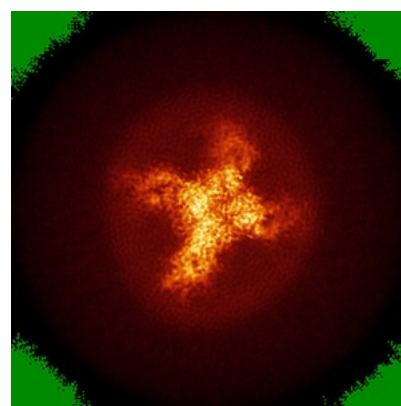
6.4.1 Primary map



X



Y



Z

The images above show the map standard deviation projections with false color in three orthogonal directions. Minimum values are shown in green, max in blue, and dark to light orange shades represent small to large values respectively.

6.5 Orthogonal surface views [i](#)

6.5.1 Primary map



The images above show the 3D surface view of the map at the recommended contour level 0.07. These images, in conjunction with the slice images, may facilitate assessment of whether an appropriate contour level has been provided.

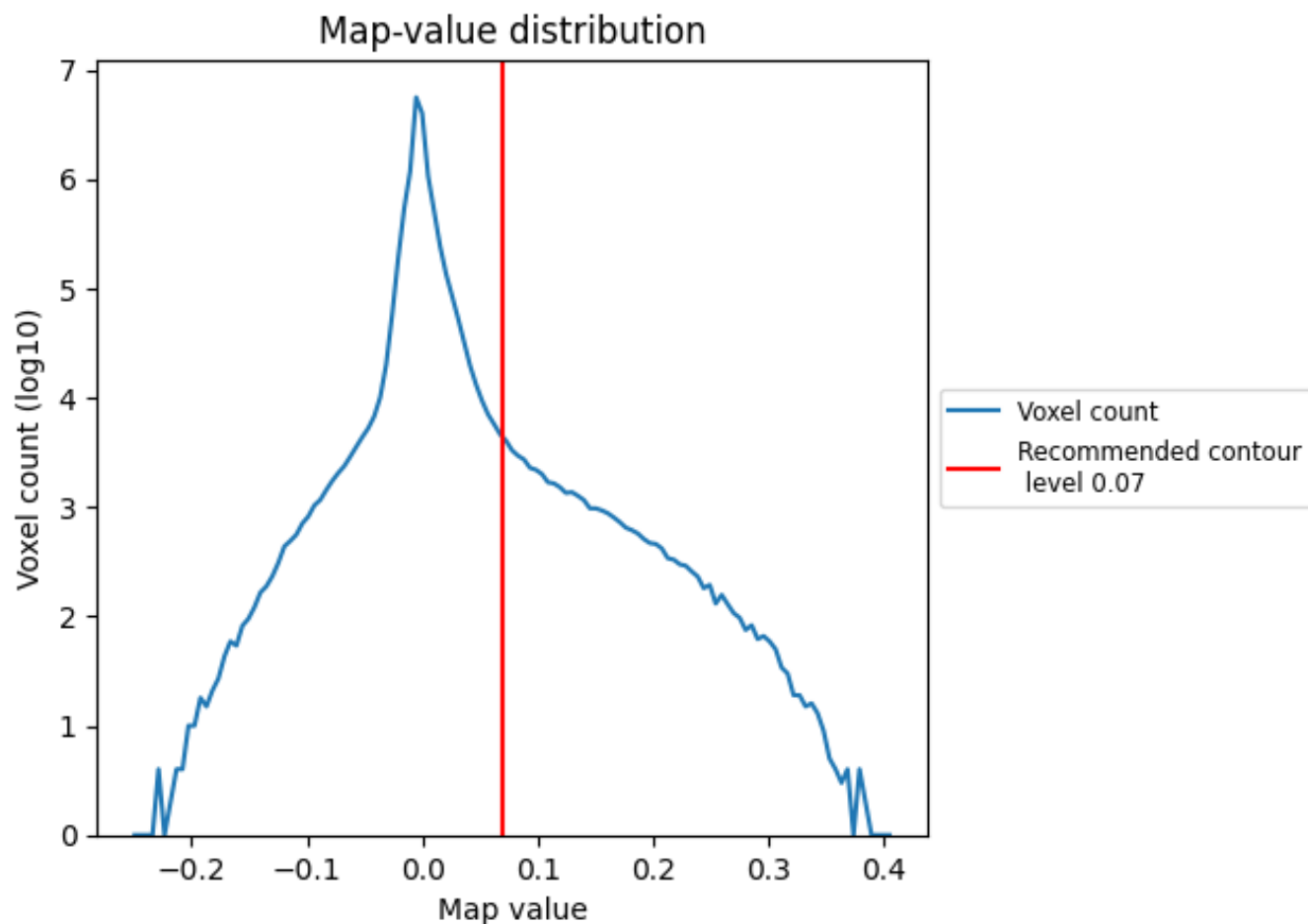
6.6 Mask visualisation [i](#)

This section was not generated. No masks/segmentation were deposited.

7 Map analysis [i](#)

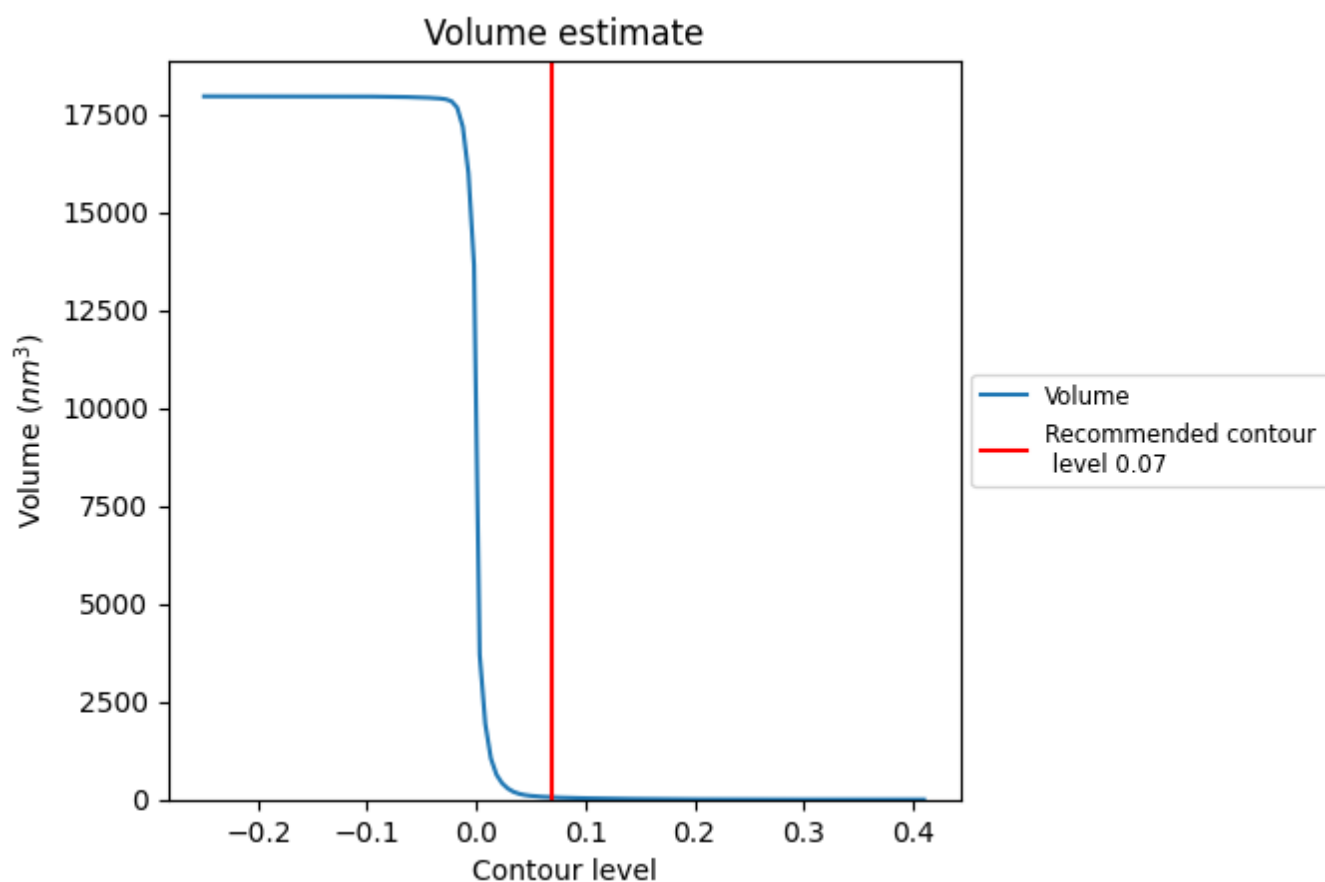
This section contains the results of statistical analysis of the map.

7.1 Map-value distribution [i](#)



The map-value distribution is plotted in 128 intervals along the x-axis. The y-axis is logarithmic. A spike in this graph at zero usually indicates that the volume has been masked.

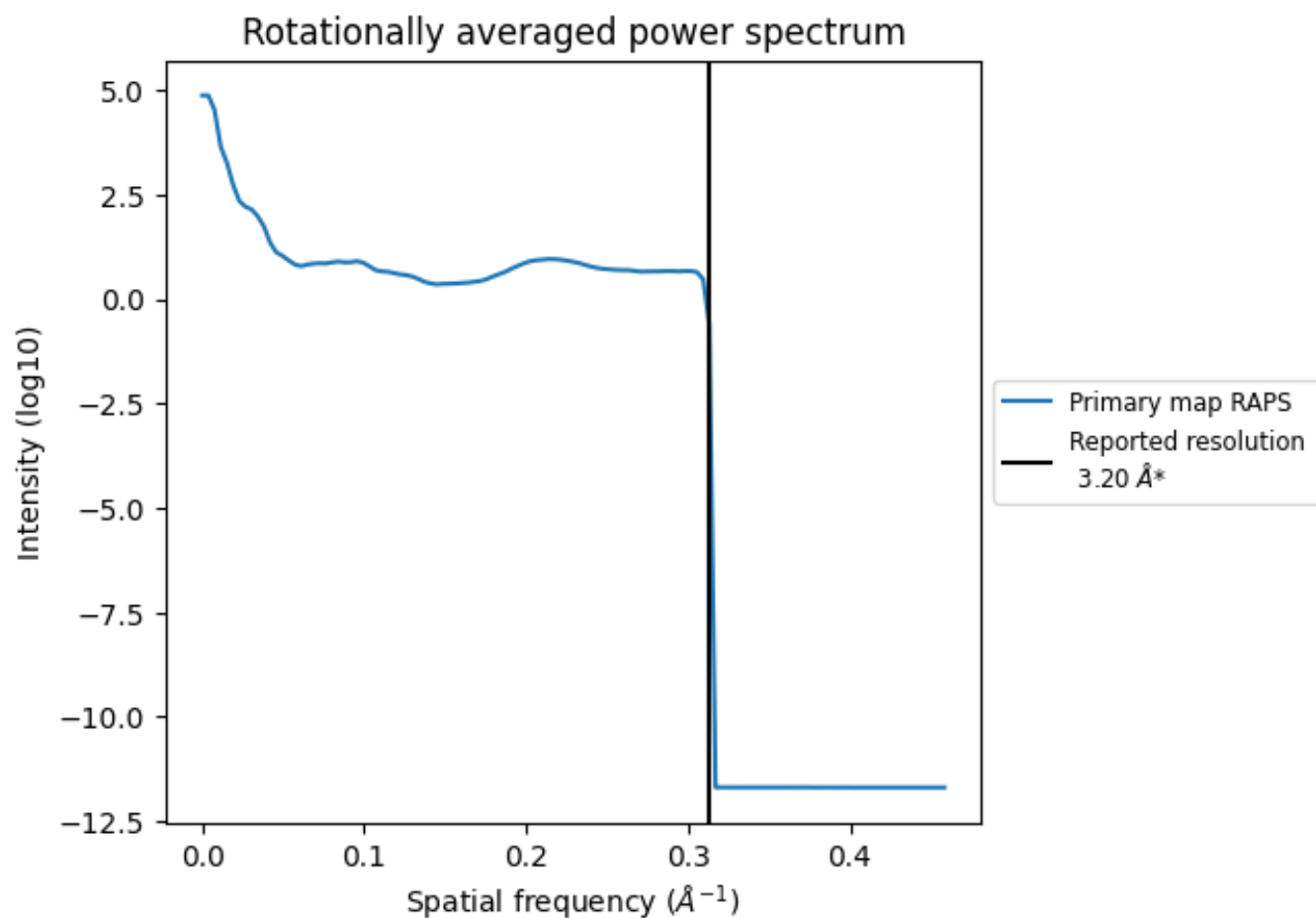
7.2 Volume estimate [i](#)



The volume at the recommended contour level is 57 nm³; this corresponds to an approximate mass of 52 kDa.

The volume estimate graph shows how the enclosed volume varies with the contour level. The recommended contour level is shown as a vertical line and the intersection between the line and the curve gives the volume of the enclosed surface at the given level.

7.3 Rotationally averaged power spectrum ⓘ



*Reported resolution corresponds to spatial frequency of 0.312 \AA^{-1}

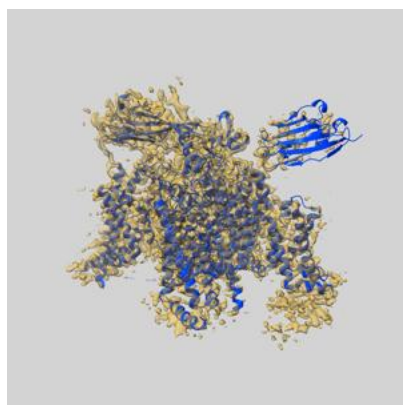
8 Fourier-Shell correlation

This section was not generated. No FSC curve or half-maps provided.

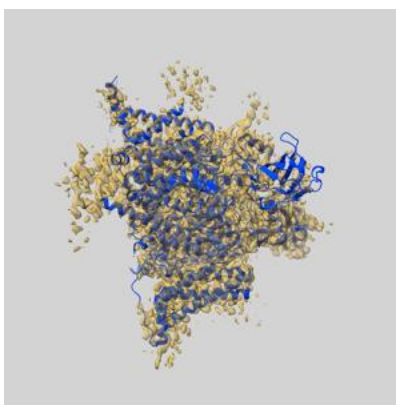
9 Map-model fit [i](#)

This section contains information regarding the fit between EMDB map EMD-9781 and PDB model 6J8G. Per-residue inclusion information can be found in section [3](#) on page [7](#).

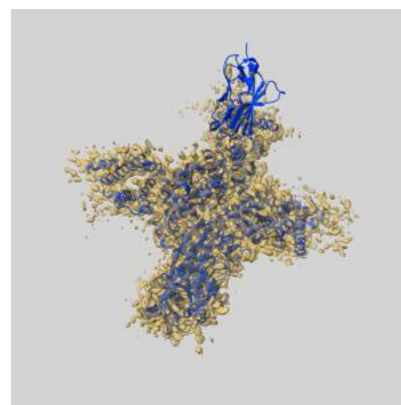
9.1 Map-model overlay [i](#)



X



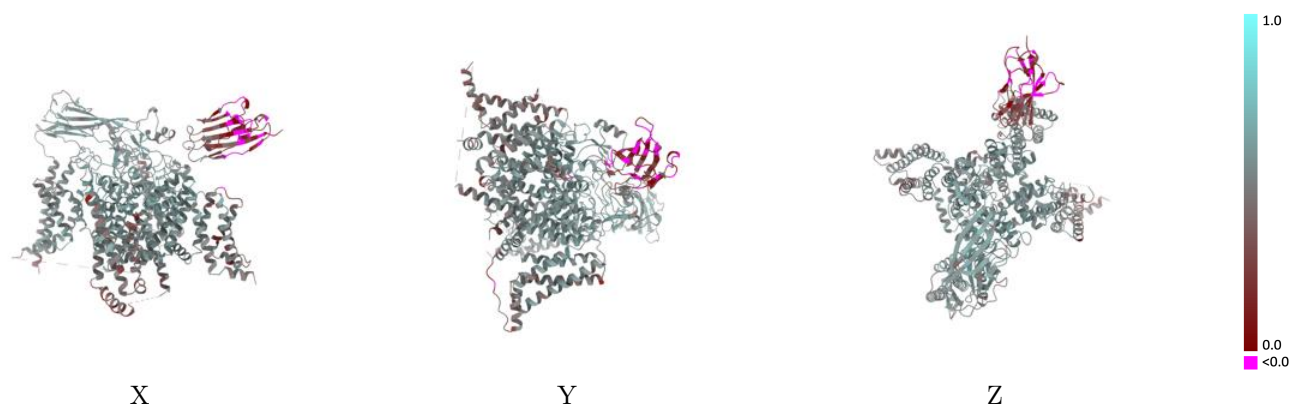
Y



Z

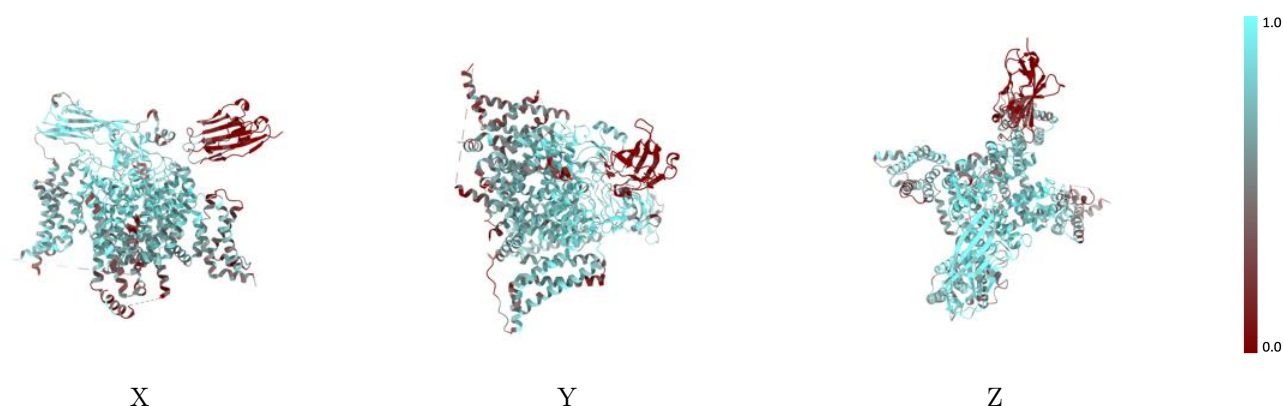
The images above show the 3D surface view of the map at the recommended contour level 0.07 at 50% transparency in yellow overlaid with a ribbon representation of the model coloured in blue. These images allow for the visual assessment of the quality of fit between the atomic model and the map.

9.2 Q-score mapped to coordinate model [i](#)



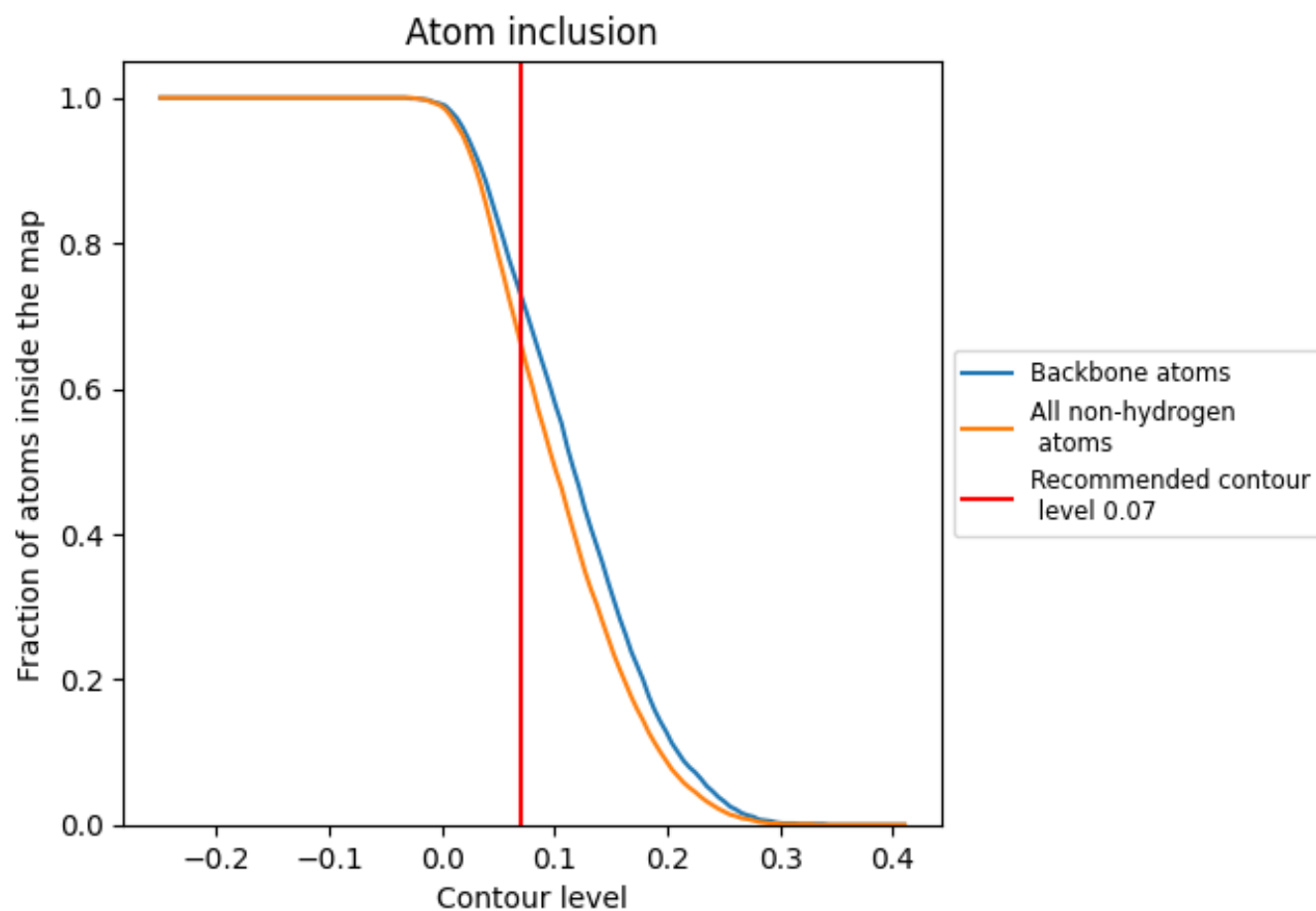
The images above show the model with each residue coloured according to its Q-score. This shows their resolvability in the map with higher Q-score values reflecting better resolvability. Please note: Q-score is calculating the resolvability of atoms, and thus high values are only expected at resolutions at which atoms can be resolved. Low Q-score values may therefore be expected for many entries.

9.3 Atom inclusion mapped to coordinate model [i](#)



The images above show the model with each residue coloured according to its atom inclusion. This shows to what extent they are inside the map at the recommended contour level (0.07).

9.4 Atom inclusion [i](#)



At the recommended contour level, 73% of all backbone atoms, 66% of all non-hydrogen atoms, are inside the map.

9.5 Map-model fit summary ⓘ

The table lists the average atom inclusion at the recommended contour level (0.07) and Q-score for the entire model and for each chain.

Chain	Atom inclusion	Q-score
All	<div></div> 0.6610	<div></div> 0.4950
A	<div></div> 0.7090	<div></div> 0.5250
B	<div></div> 0.7400	<div></div> 0.5180
C	<div></div> 0.1070	<div></div> 0.1800
D	<div></div> 0.3930	<div></div> 0.3450
E	<div></div> 0.6430	<div></div> 0.4580

