



# Full wwPDB X-ray Structure Validation Report ⓘ

Jan 6, 2024 – 07:19 pm GMT

PDB ID : 6H6J  
Title : Carbomonoxy murine neuroglobin Gly-loop mutant  
Authors : Exertier, C.; Vallone, B.; Savino, C.; Freda, I.; Montemiglio, L.C.; Cerutti, G.; Scaglione, A.; Parisi, G.  
Deposited on : 2018-07-27  
Resolution : 2.60 Å(reported)

This is a Full wwPDB X-ray Structure Validation Report for a publicly released PDB entry.

We welcome your comments at [validation@mail.wwpdb.org](mailto:validation@mail.wwpdb.org)

A user guide is available at

<https://www.wwpdb.org/validation/2017/XrayValidationReportHelp>

with specific help available everywhere you see the ⓘ symbol.

The types of validation reports are described at

<http://www.wwpdb.org/validation/2017/FAQs#types>.

---

The following versions of software and data (see [references ⓘ](#)) were used in the production of this report:

MolProbity : 4.02b-467  
Mogul : 1.8.4, CSD as541be (2020)  
Xtriage (Phenix) : 1.13  
EDS : 2.36  
buster-report : 1.1.7 (2018)  
Percentile statistics : 20191225.v01 (using entries in the PDB archive December 25th 2019)  
Refmac : 5.8.0158  
CCP4 : 7.0.044 (Gargrove)  
Ideal geometry (proteins) : Engh & Huber (2001)  
Ideal geometry (DNA, RNA) : Parkinson et al. (1996)  
Validation Pipeline (wwPDB-VP) : 2.36



*Continued from previous page...*

<b>Mol</b>	<b>Type</b>	<b>Chain</b>	<b>Res</b>	<b>Chirality</b>	<b>Geometry</b>	<b>Clashes</b>	<b>Electron density</b>
6	GOL	A	205[B]	-	-	X	-

## 2 Entry composition [i](#)

There are 8 unique types of molecules in this entry. The entry contains 1419 atoms, of which 0 are hydrogens and 0 are deuteriums.

In the tables below, the ZeroOcc column contains the number of atoms modelled with zero occupancy, the AltConf column contains the number of residues with at least one atom in alternate conformation and the Trace column contains the number of residues modelled with at most 2 atoms.

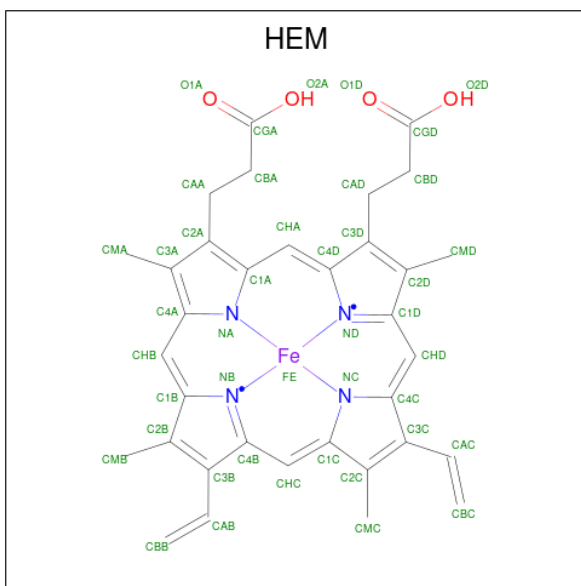
- Molecule 1 is a protein called Neuroglobin.

Mol	Chain	Residues	Atoms					ZeroOcc	AltConf	Trace
			Total	C	N	O	S			
1	A	150	1220	775	214	225	6	0	6	0

There are 6 discrepancies between the modelled and reference sequences:

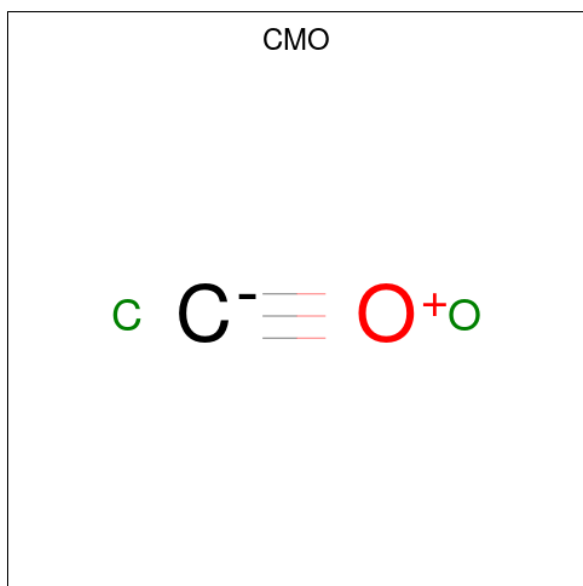
Chain	Residue	Modelled	Actual	Comment	Reference
A	0	HIS	-	expression tag	UNP Q9ER97
A	?	-	TYR	deletion	UNP Q9ER97
A	44	GLY	ASN	conflict	UNP Q9ER97
A	46	GLY	ARG	conflict	UNP Q9ER97
A	54	SER	CYS	conflict	UNP Q9ER97
A	119	SER	CYS	conflict	UNP Q9ER97

- Molecule 2 is PROTOPORPHYRIN IX CONTAINING FE (three-letter code: HEM) (formula:  $C_{34}H_{32}FeN_4O_4$ ).



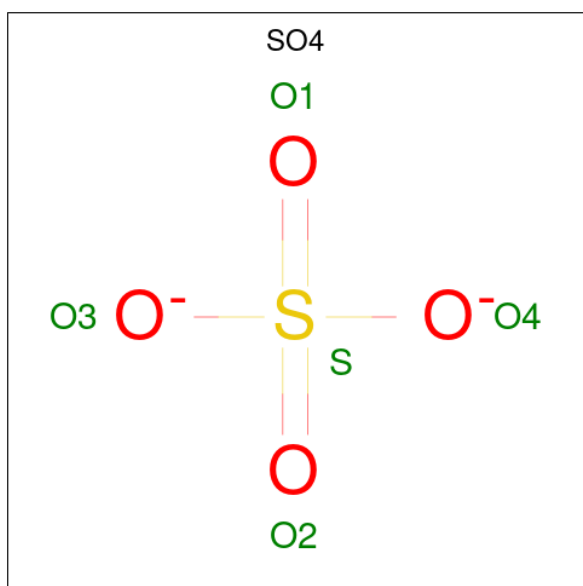
Mol	Chain	Residues	Atoms				ZeroOcc	AltConf	
			Total	C	Fe	N			O
2	A	1	86	68	2	8	8	0	1

- Molecule 3 is CARBON MONOXIDE (three-letter code: CMO) (formula: CO).



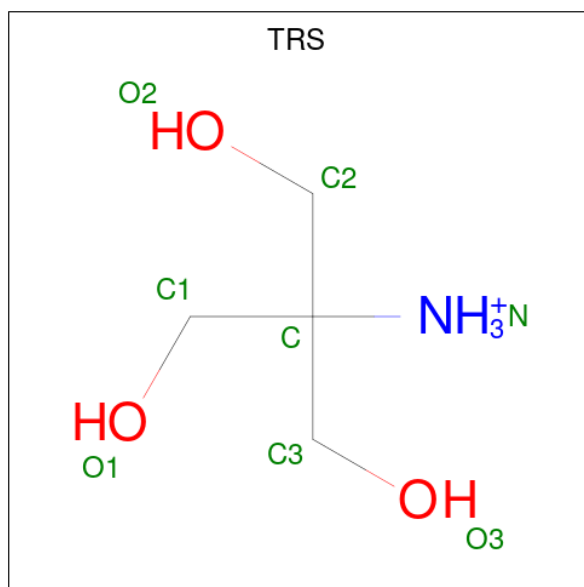
Mol	Chain	Residues	Atoms			ZeroOcc	AltConf
			Total	C	O		
3	A	1	2	1	1	0	1

- Molecule 4 is SULFATE ION (three-letter code: SO4) (formula: O<sub>4</sub>S).



Mol	Chain	Residues	Atoms			ZeroOcc	AltConf
4	A	1	Total	O	S	0	0
			5	4	1		
4	A	1	Total	O	S	0	0
			5	4	1		

- Molecule 5 is 2-AMINO-2-HYDROXYMETHYL-PROPANE-1,3-DIOL (three-letter code: TRS) (formula: C<sub>4</sub>H<sub>12</sub>NO<sub>3</sub>).



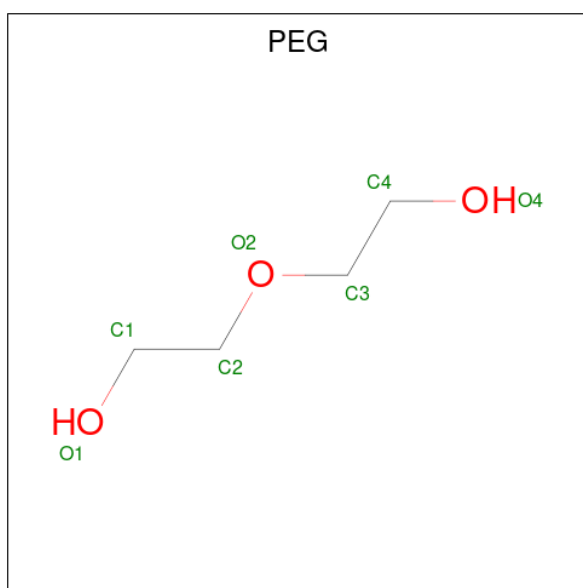
Mol	Chain	Residues	Atoms				ZeroOcc	AltConf
5	A	1	Total	C	N	O	0	0
			8	4	1	3		

- Molecule 6 is GLYCEROL (three-letter code: GOL) (formula: C<sub>3</sub>H<sub>8</sub>O<sub>3</sub>).



Mol	Chain	Residues	Atoms			ZeroOcc	AltConf
6	A	1	Total	C	O	0	1
			12	6	6		
6	A	1	Total	C	O	0	0
			6	3	3		

- Molecule 7 is DI(HYDROXYETHYL)ETHER (three-letter code: PEG) (formula:  $C_4H_{10}O_3$ ).



Mol	Chain	Residues	Atoms			ZeroOcc	AltConf
7	A	1	Total	C	O	0	0
			7	4	3		
7	A	1	Total	C	O	0	0
			7	4	3		

*Continued on next page...*

*Continued from previous page...*

Mol	Chain	Residues	Atoms			ZeroOcc	AltConf
7	A	1	Total	C	O	0	0
			7	4	3		

- Molecule 8 is water.


Mol	Chain	Residues	Atoms		ZeroOcc	AltConf
8	A	53	Total	O	0	1
			54	54		



### 3 Residue-property plots [i](#)

These plots are drawn for all protein, RNA, DNA and oligosaccharide chains in the entry. The first graphic for a chain summarises the proportions of the various outlier classes displayed in the second graphic. The second graphic shows the sequence view annotated by issues in geometry and electron density. Residues are color-coded according to the number of geometric quality criteria for which they contain at least one outlier: green = 0, yellow = 1, orange = 2 and red = 3 or more. A red dot above a residue indicates a poor fit to the electron density ( $RSRZ > 2$ ). Stretches of 2 or more consecutive residues without any outlier are shown as a green connector. Residues present in the sample, but not in the model, are shown in grey.

- Molecule 1: Neuroglobin

Chain A: 



## 4 Data and refinement statistics i

Property	Value	Source
Space group	P 31 2 1	Depositor
Cell constants a, b, c, $\alpha$ , $\beta$ , $\gamma$	74.86Å 74.86Å 77.23Å 90.00° 90.00° 120.00°	Depositor
Resolution (Å)	38.64 – 2.60 38.61 – 2.60	Depositor EDS
% Data completeness (in resolution range)	100.0 (38.64-2.60) 100.0 (38.61-2.60)	Depositor EDS
$R_{merge}$	0.19	Depositor
$R_{sym}$	(Not available)	Depositor
$\langle I/\sigma(I) \rangle$ <sup>1</sup>	2.40 (at 2.61Å)	Xtrriage
Refinement program	REFMAC 5.7.0029	Depositor
R, $R_{free}$	0.194 , 0.246 0.190 , 0.226	Depositor DCC
$R_{free}$ test set	443 reflections (5.53%)	wwPDB-VP
Wilson B-factor (Å <sup>2</sup> )	44.1	Xtrriage
Anisotropy	0.117	Xtrriage
Bulk solvent $k_{sol}$ (e/Å <sup>3</sup> ), $B_{sol}$ (Å <sup>2</sup> )	0.34 , 39.6	EDS
L-test for twinning <sup>2</sup>	$\langle  L  \rangle = 0.50$ , $\langle L^2 \rangle = 0.33$	Xtrriage
Estimated twinning fraction	0.030 for -h,-k,l	Xtrriage
$F_o, F_c$ correlation	0.95	EDS
Total number of atoms	1419	wwPDB-VP
Average B, all atoms (Å <sup>2</sup> )	43.0	wwPDB-VP

Xtrriage's analysis on translational NCS is as follows: *The largest off-origin peak in the Patterson function is 6.19% of the height of the origin peak. No significant pseudotranslation is detected.*

<sup>1</sup>Intensities estimated from amplitudes.

<sup>2</sup>Theoretical values of  $\langle |L| \rangle$ ,  $\langle L^2 \rangle$  for acentric reflections are 0.5, 0.333 respectively for untwinned datasets, and 0.375, 0.2 for perfectly twinned datasets.

## 5 Model quality [i](#)

### 5.1 Standard geometry [i](#)

Bond lengths and bond angles in the following residue types are not validated in this section: SO4, HEM, PEG, GOL, CMO, TRS

The Z score for a bond length (or angle) is the number of standard deviations the observed value is removed from the expected value. A bond length (or angle) with  $|Z| > 5$  is considered an outlier worth inspection. RMSZ is the root-mean-square of all Z scores of the bond lengths (or angles).

Mol	Chain	Bond lengths		Bond angles	
		RMSZ	# Z  >5	RMSZ	# Z  >5
1	A	0.63	0/1261	0.77	0/1706

There are no bond length outliers.

There are no bond angle outliers.

There are no chirality outliers.

There are no planarity outliers.

### 5.2 Too-close contacts [i](#)

In the following table, the Non-H and H(model) columns list the number of non-hydrogen atoms and hydrogen atoms in the chain respectively. The H(added) column lists the number of hydrogen atoms added and optimized by MolProbity. The Clashes column lists the number of clashes within the asymmetric unit, whereas Symm-Clashes lists symmetry-related clashes.

Mol	Chain	Non-H	H(model)	H(added)	Clashes	Symm-Clashes
1	A	1220	0	1222	13	0
2	A	86	0	60	13	0
3	A	2	0	0	0	0
4	A	10	0	0	0	0
5	A	8	0	12	0	0
6	A	18	0	24	7	0
7	A	21	0	30	0	0
8	A	54	0	0	1	0
All	All	1419	0	1348	25	0

The all-atom clashscore is defined as the number of clashes found per 1000 atoms (including hydrogen atoms). The all-atom clashscore for this structure is 9.

All (25) close contacts within the same asymmetric unit are listed below, sorted by their clash

magnitude.

Atom-1	Atom-2	Interatomic distance (Å)	Clash overlap (Å)
2:A:201[A]:HEM:HMC1	2:A:201[A]:HEM:HBC2	1.36	1.05
2:A:201[A]:HEM:HBC2	2:A:201[A]:HEM:CMC	1.95	0.94
2:A:201[A]:HEM:HBB2	2:A:201[A]:HEM:HHC	1.61	0.82
1:A:50:SER:HB2	1:A:51:PRO:CD	2.16	0.76
2:A:201[A]:HEM:HMC1	2:A:201[A]:HEM:CBC	2.18	0.72
1:A:1[B]:MET:HB2	6:A:205[B]:GOL:H12	1.71	0.70
2:A:201[B]:HEM:HBC2	2:A:201[B]:HEM:HMC1	1.77	0.67
1:A:1[B]:MET:HE3	6:A:205[B]:GOL:H11	1.79	0.65
6:A:206:GOL:O3	6:A:206:GOL:O1	2.14	0.65
2:A:201[B]:HEM:HMB1	2:A:201[B]:HEM:HBB2	1.81	0.62
2:A:201[B]:HEM:HBC2	2:A:201[B]:HEM:CMC	2.34	0.57
1:A:1[B]:MET:CE	6:A:205[B]:GOL:H11	2.36	0.55
2:A:201[B]:HEM:HBB2	2:A:201[B]:HEM:CMB	2.39	0.52
1:A:38:LEU:HD13	2:A:201[B]:HEM:CBB	2.41	0.50
1:A:0[B]:HIS:HB3	1:A:79:GLU:O	2.16	0.46
2:A:201[A]:HEM:HBB2	2:A:201[A]:HEM:CHC	2.28	0.46
2:A:201[A]:HEM:HHC	2:A:201[A]:HEM:CBB	2.37	0.46
1:A:67:VAL:HG22	2:A:201[A]:HEM:C4C	2.52	0.45
1:A:1[B]:MET:CE	6:A:205[B]:GOL:C1	2.94	0.45
1:A:14:ARG:NH1	8:A:305:HOH:O	2.48	0.45
1:A:1[B]:MET:HE2	6:A:205[B]:GOL:C1	2.47	0.44
1:A:58:PRO:HB3	1:A:63[A]:HIS:CE1	2.52	0.44
1:A:80:ASP:HA	6:A:205[A]:GOL:O3	2.18	0.43
2:A:201[A]:HEM:HHA	2:A:201[A]:HEM:HBA1	2.01	0.42
1:A:53:ASP:HA	1:A:56:SER:OG	2.22	0.40

There are no symmetry-related clashes.

## 5.3 Torsion angles

### 5.3.1 Protein backbone

In the following table, the Percentiles column shows the percent Ramachandran outliers of the chain as a percentile score with respect to all X-ray entries followed by that with respect to entries of similar resolution.

The Analysed column shows the number of residues for which the backbone conformation was analysed, and the total number of residues.

Mol	Chain	Analysed	Favoured	Allowed	Outliers	Percentiles	
1	A	153/150 (102%)	150 (98%)	2 (1%)	1 (1%)	22	43

All (1) Ramachandran outliers are listed below:

Mol	Chain	Res	Type
1	A	50	SER

### 5.3.2 Protein sidechains [i](#)

In the following table, the Percentiles column shows the percent sidechain outliers of the chain as a percentile score with respect to all X-ray entries followed by that with respect to entries of similar resolution.

The Analysed column shows the number of residues for which the sidechain conformation was analysed, and the total number of residues.

Mol	Chain	Analysed	Rotameric	Outliers	Percentiles	
1	A	136/130 (105%)	126 (93%)	10 (7%)	13	28

All (10) residues with a non-rotameric sidechain are listed below:

Mol	Chain	Res	Type
1	A	48	PHE
1	A	49	SER
1	A	50	SER
1	A	52	GLU
1	A	55	LEU
1	A	86	GLU
1	A	90	SER
1	A	102	LEU
1	A	119	SER
1	A	134	ARG

Sometimes sidechains can be flipped to improve hydrogen bonding and reduce clashes. All (2) such sidechains are listed below:

Mol	Chain	Res	Type
1	A	23	HIS
1	A	77	ASN

### 5.3.3 RNA [i](#)

There are no RNA molecules in this entry.

## 5.4 Non-standard residues in protein, DNA, RNA chains [i](#)

There are no non-standard protein/DNA/RNA residues in this entry.

## 5.5 Carbohydrates [i](#)

There are no monosaccharides in this entry.

## 5.6 Ligand geometry [i](#)

12 ligands are modelled in this entry.

In the following table, the Counts columns list the number of bonds (or angles) for which Mogul statistics could be retrieved, the number of bonds (or angles) that are observed in the model and the number of bonds (or angles) that are defined in the Chemical Component Dictionary. The Link column lists molecule types, if any, to which the group is linked. The Z score for a bond length (or angle) is the number of standard deviations the observed value is removed from the expected value. A bond length (or angle) with  $|Z| > 2$  is considered an outlier worth inspection. RMSZ is the root-mean-square of all Z scores of the bond lengths (or angles).

Mol	Type	Chain	Res	Link	Bond lengths			Bond angles		
					Counts	RMSZ	# Z  > 2	Counts	RMSZ	# Z  > 2
7	PEG	A	208	-	6,6,6	0.48	0	5,5,5	0.58	0
4	SO4	A	203	4	4,4,4	0.34	0	6,6,6	0.15	0
6	GOL	A	205[B]	-	5,5,5	0.35	0	5,5,5	0.17	0
7	PEG	A	209	-	6,6,6	0.41	0	5,5,5	0.48	0
4	SO4	A	210	4	4,4,4	0.30	0	6,6,6	0.27	0
2	HEM	A	201[B]	1	41,50,50	1.35	4 (9%)	45,82,82	1.98	10 (22%)
6	GOL	A	205[A]	-	5,5,5	0.38	0	5,5,5	0.41	0
3	CMO	A	202[A]	2	0,1,1	-	-	-	-	-
7	PEG	A	207	-	6,6,6	0.38	0	5,5,5	0.61	0
5	TRS	A	204	-	7,7,7	0.70	0	9,9,9	4.20	6 (66%)
2	HEM	A	201[A]	3,1	41,50,50	1.35	6 (14%)	45,82,82	2.04	13 (28%)
6	GOL	A	206	-	5,5,5	0.41	0	5,5,5	0.97	0

In the following table, the Chirals column lists the number of chiral outliers, the number of chiral centers analysed, the number of these observed in the model and the number defined in the Chemical Component Dictionary. Similar counts are reported in the Torsion and Rings columns. '-' means no outliers of that kind were identified.

Mol	Type	Chain	Res	Link	Chirals	Torsions	Rings
7	PEG	A	208	-	-	3/4/4/4	-
6	GOL	A	205[B]	-	-	2/4/4/4	-
7	PEG	A	209	-	-	2/4/4/4	-
2	HEM	A	201[B]	1	-	4/12/54/54	-
6	GOL	A	205[A]	-	-	3/4/4/4	-
7	PEG	A	207	-	-	2/4/4/4	-
5	TRS	A	204	-	-	7/9/9/9	-
2	HEM	A	201[A]	3,1	-	4/12/54/54	-
6	GOL	A	206	-	-	4/4/4/4	-

All (10) bond length outliers are listed below:

Mol	Chain	Res	Type	Atoms	Z	Observed(Å)	Ideal(Å)
2	A	201[B]	HEM	C1B-NB	-3.94	1.33	1.40
2	A	201[A]	HEM	C1B-NB	-3.69	1.33	1.40
2	A	201[B]	HEM	C4D-ND	-3.15	1.34	1.40
2	A	201[A]	HEM	C4D-ND	-2.92	1.35	1.40
2	A	201[B]	HEM	C4B-NB	-2.90	1.32	1.38
2	A	201[A]	HEM	C4B-NB	-2.39	1.33	1.38
2	A	201[A]	HEM	C3B-C4B	2.18	1.49	1.44
2	A	201[B]	HEM	C1D-ND	-2.18	1.34	1.38
2	A	201[A]	HEM	FE-NB	2.14	2.07	1.96
2	A	201[A]	HEM	C1D-ND	-2.09	1.34	1.38

All (29) bond angle outliers are listed below:

Mol	Chain	Res	Type	Atoms	Z	Observed(°)	Ideal(°)
5	A	204	TRS	C2-C-N	-6.96	87.20	107.98
5	A	204	TRS	C1-C-N	-6.69	88.01	107.98
5	A	204	TRS	C3-C-N	-6.30	89.17	107.98
2	A	201[B]	HEM	C1B-NB-C4B	5.68	110.94	105.07
2	A	201[A]	HEM	C1B-NB-C4B	5.66	110.92	105.07
2	A	201[B]	HEM	CHC-C4B-NB	4.74	129.58	124.43
2	A	201[B]	HEM	CBA-CAA-C2A	-4.65	104.68	112.62
2	A	201[A]	HEM	CHB-C1B-NB	4.57	130.02	124.38
2	A	201[A]	HEM	CHC-C4B-NB	4.34	129.15	124.43
2	A	201[A]	HEM	CBA-CAA-C2A	-4.32	105.24	112.62
2	A	201[A]	HEM	CHD-C1D-ND	3.89	128.66	124.43
2	A	201[B]	HEM	CHB-C1B-NB	3.40	128.58	124.38
2	A	201[B]	HEM	CHA-C4D-ND	3.32	128.48	124.38
2	A	201[A]	HEM	CHA-C4D-ND	3.27	128.42	124.38

*Continued on next page...*

*Continued from previous page...*

Mol	Chain	Res	Type	Atoms	Z	Observed(°)	Ideal(°)
2	A	201[A]	HEM	CHD-C1D-C2D	-3.16	120.04	124.98
2	A	201[B]	HEM	CHA-C4D-C3D	-3.10	119.50	125.33
2	A	201[B]	HEM	CHD-C1D-ND	3.07	127.77	124.43
5	A	204	TRS	C2-C-C1	3.02	120.18	110.81
5	A	204	TRS	C3-C-C2	2.96	119.98	110.81
5	A	204	TRS	C3-C-C1	2.81	119.52	110.81
2	A	201[B]	HEM	CHD-C1D-C2D	-2.66	120.82	124.98
2	A	201[A]	HEM	CHA-C4D-C3D	-2.52	120.60	125.33
2	A	201[B]	HEM	CMD-C2D-C1D	2.51	128.87	125.04
2	A	201[A]	HEM	CHB-C1B-C2B	-2.38	120.14	126.72
2	A	201[A]	HEM	CBB-CAB-C3B	-2.32	116.07	127.62
2	A	201[B]	HEM	O2D-CGD-CBD	2.25	121.27	114.03
2	A	201[A]	HEM	C3C-C4C-NC	-2.12	106.95	110.94
2	A	201[A]	HEM	O2D-CGD-CBD	2.08	120.70	114.03
2	A	201[A]	HEM	CAD-CBD-CGD	-2.01	109.28	113.60

There are no chirality outliers.

All (31) torsion outliers are listed below:

Mol	Chain	Res	Type	Atoms
5	A	204	TRS	N-C-C1-O1
5	A	204	TRS	C1-C-C2-O2
5	A	204	TRS	C2-C-C3-O3
6	A	205[A]	GOL	O2-C2-C3-O3
6	A	205[B]	GOL	C1-C2-C3-O3
6	A	206	GOL	O2-C2-C3-O3
7	A	209	PEG	O2-C3-C4-O4
7	A	207	PEG	O1-C1-C2-O2
6	A	205[A]	GOL	C1-C2-C3-O3
6	A	206	GOL	O1-C1-C2-C3
6	A	206	GOL	C1-C2-C3-O3
7	A	208	PEG	O1-C1-C2-O2
6	A	205[B]	GOL	O2-C2-C3-O3
6	A	206	GOL	O1-C1-C2-O2
7	A	208	PEG	O2-C3-C4-O4
6	A	205[A]	GOL	O1-C1-C2-O2
7	A	207	PEG	C4-C3-O2-C2
7	A	208	PEG	C4-C3-O2-C2
5	A	204	TRS	C2-C-C1-O1
5	A	204	TRS	C3-C-C2-O2
5	A	204	TRS	C3-C-C1-O1
2	A	201[B]	HEM	CAD-CBD-CGD-O1D

*Continued on next page...*



*Continued from previous page...*

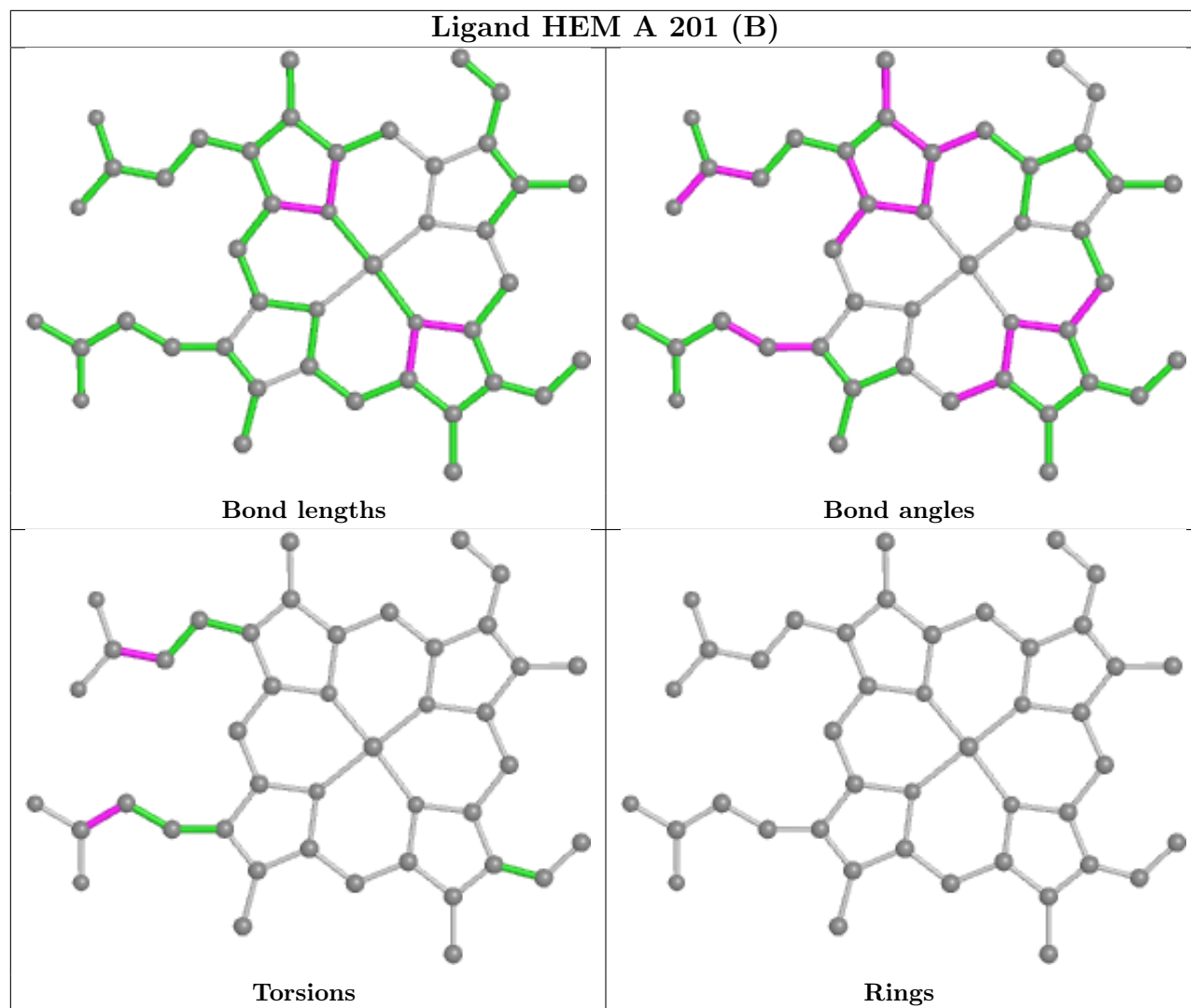
Mol	Chain	Res	Type	Atoms
2	A	201[A]	HEM	CAA-CBA-CGA-O2A
2	A	201[A]	HEM	CAD-CBD-CGD-O1D
2	A	201[A]	HEM	CAA-CBA-CGA-O1A
2	A	201[B]	HEM	CAA-CBA-CGA-O2A
7	A	209	PEG	C4-C3-O2-C2
2	A	201[B]	HEM	CAA-CBA-CGA-O1A
2	A	201[B]	HEM	CAD-CBD-CGD-O2D
2	A	201[A]	HEM	CAD-CBD-CGD-O2D
5	A	204	TRS	C1-C-C3-O3

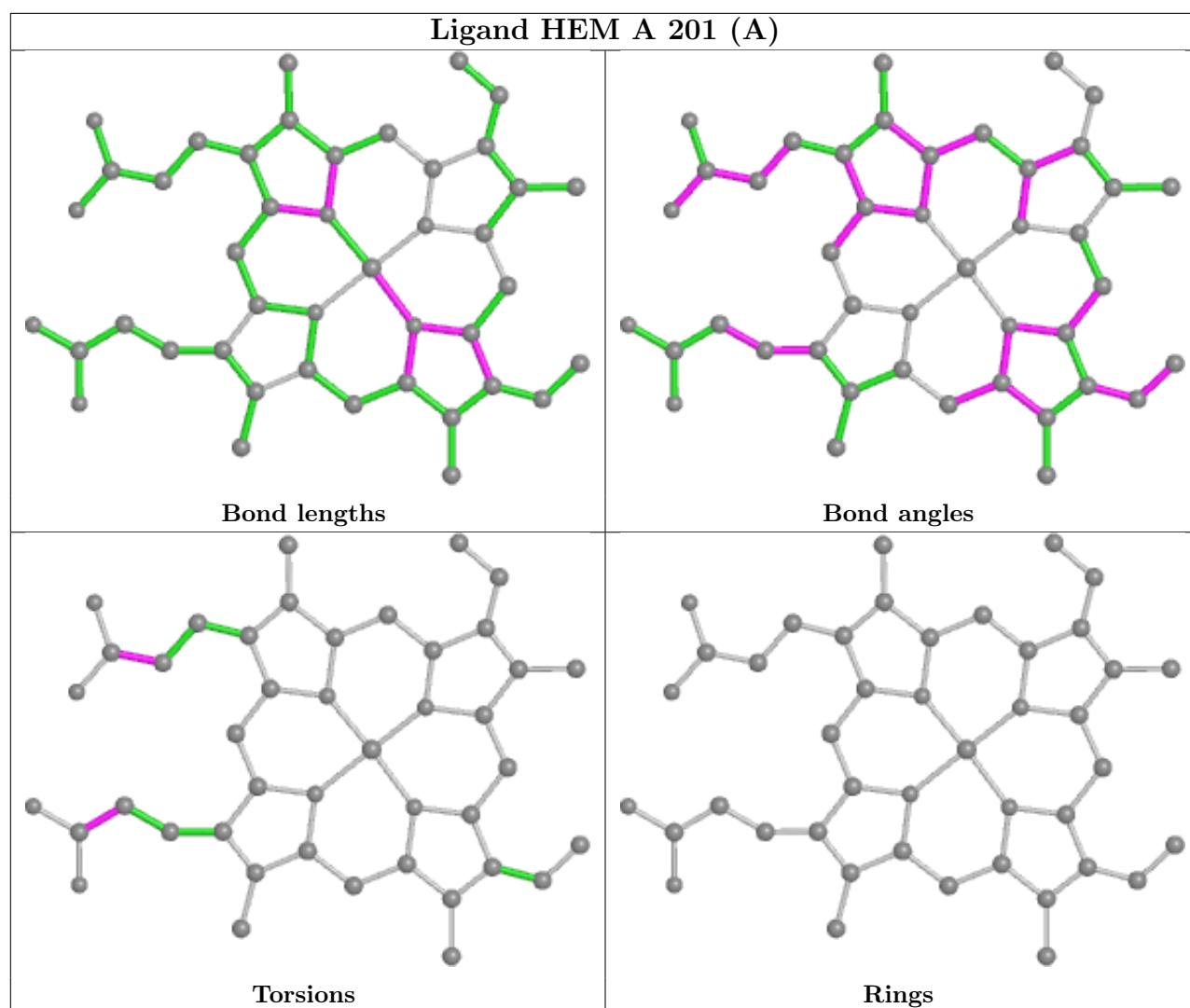
There are no ring outliers.

5 monomers are involved in 20 short contacts:

Mol	Chain	Res	Type	Clashes	Symm-Clashes
6	A	205[B]	GOL	5	0
2	A	201[B]	HEM	5	0
6	A	205[A]	GOL	1	0
2	A	201[A]	HEM	8	0
6	A	206	GOL	1	0

The following is a two-dimensional graphical depiction of Mogul quality analysis of bond lengths, bond angles, torsion angles, and ring geometry for all instances of the Ligand of Interest. In addition, ligands with molecular weight > 250 and outliers as shown on the validation Tables will also be included. For torsion angles, if less than 5% of the Mogul distribution of torsion angles is within 10 degrees of the torsion angle in question, then that torsion angle is considered an outlier. Any bond that is central to one or more torsion angles identified as an outlier by Mogul will be highlighted in the graph. For rings, the root-mean-square deviation (RMSD) between the ring in question and similar rings identified by Mogul is calculated over all ring torsion angles. If the average RMSD is greater than 60 degrees and the minimal RMSD between the ring in question and any Mogul-identified rings is also greater than 60 degrees, then that ring is considered an outlier. The outliers are highlighted in purple. The color gray indicates Mogul did not find sufficient equivalents in the CSD to analyse the geometry.





## 5.7 Other polymers [i](#)

There are no such residues in this entry.

## 5.8 Polymer linkage issues [i](#)

There are no chain breaks in this entry.

## 6 Fit of model and data [i](#)

### 6.1 Protein, DNA and RNA chains [i](#)

In the following table, the column labelled ‘#RSRZ> 2’ contains the number (and percentage) of RSRZ outliers, followed by percent RSRZ outliers for the chain as percentile scores relative to all X-ray entries and entries of similar resolution. The OWAB column contains the minimum, median, 95<sup>th</sup> percentile and maximum values of the occupancy-weighted average B-factor per residue. The column labelled ‘Q< 0.9’ lists the number of (and percentage) of residues with an average occupancy less than 0.9.

Mol	Chain	Analysed	<RSRZ>	#RSRZ>2	OWAB(Å <sup>2</sup> )	Q<0.9
1	A	150/150 (100%)	-0.10	12 (8%) <b>12</b> <b>9</b>	23, 36, 93, 136	0

All (12) RSRZ outliers are listed below:

Mol	Chain	Res	Type	RSRZ
1	A	55	LEU	5.4
1	A	51	PRO	4.8
1	A	53	ASP	4.5
1	A	148	ASP	4.4
1	A	52	GLU	3.4
1	A	54	SER	3.2
1	A	149	GLY	3.0
1	A	50	SER	3.0
1	A	145	ARG	2.6
1	A	93	ARG	2.4
1	A	86	GLU	2.4
1	A	49	SER	2.1

### 6.2 Non-standard residues in protein, DNA, RNA chains [i](#)

There are no non-standard protein/DNA/RNA residues in this entry.

### 6.3 Carbohydrates [i](#)

There are no monosaccharides in this entry.

### 6.4 Ligands [i](#)

In the following table, the Atoms column lists the number of modelled atoms in the group and the number defined in the chemical component dictionary. The B-factors column lists the minimum,

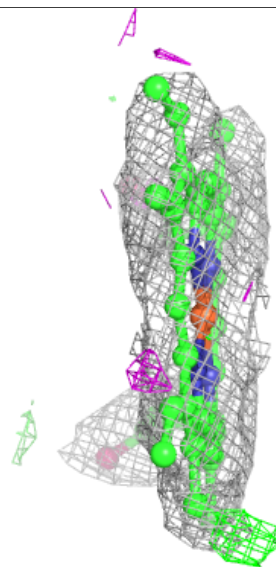
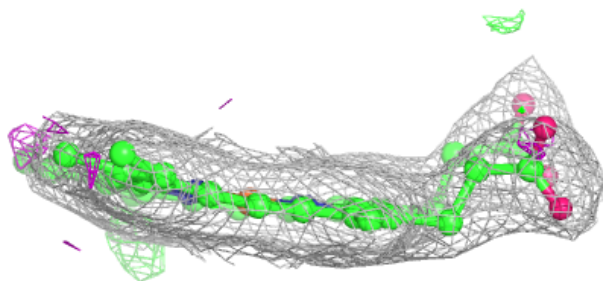
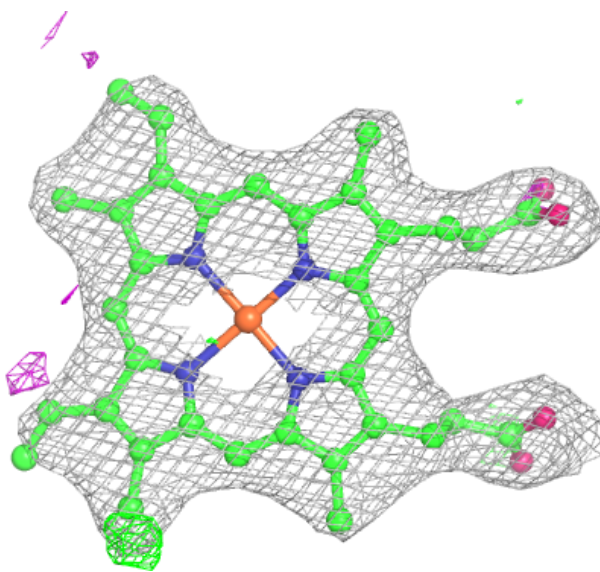
median, 95<sup>th</sup> percentile and maximum values of B factors of atoms in the group. The column labelled 'Q< 0.9' lists the number of atoms with occupancy less than 0.9.

Mol	Type	Chain	Res	Atoms	RSCC	RSR	B-factors(Å <sup>2</sup> )	Q<0.9
7	PEG	A	208	7/7	0.64	0.24	69,76,79,85	0
6	GOL	A	205[B]	6/6	0.81	0.34	69,70,71,72	6
6	GOL	A	205[A]	6/6	0.81	0.34	60,68,68,69	6
5	TRS	A	204	8/8	0.84	0.42	82,85,87,96	0
7	PEG	A	209	7/7	0.84	0.21	56,62,68,74	0
7	PEG	A	207	7/7	0.89	0.17	57,59,66,67	0
6	GOL	A	206	6/6	0.90	0.31	53,66,71,72	0
2	HEM	A	201[B]	43/43	0.96	0.17	28,31,47,52	43
2	HEM	A	201[A]	43/43	0.96	0.17	28,32,42,46	43
3	CMO	A	202[A]	2/2	0.98	0.12	27,27,27,28	2
4	SO4	A	210	5/5	0.99	0.12	37,37,39,40	5
4	SO4	A	203	5/5	0.99	0.13	59,59,61,62	5

The following is a graphical depiction of the model fit to experimental electron density of all instances of the Ligand of Interest. In addition, ligands with molecular weight > 250 and outliers as shown on the geometry validation Tables will also be included. Each fit is shown from different orientation to approximate a three-dimensional view.

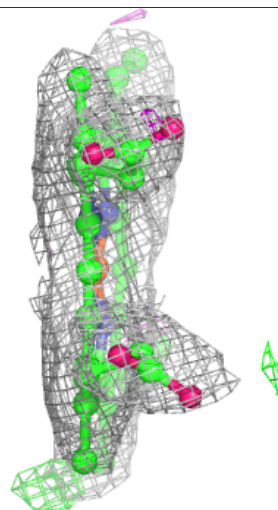
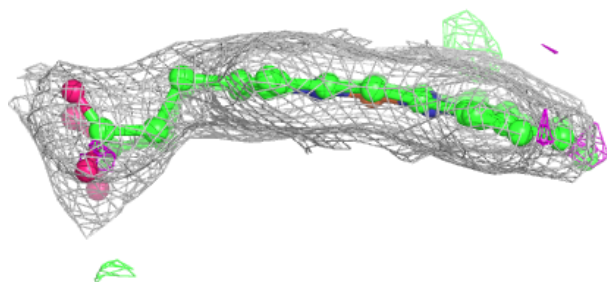
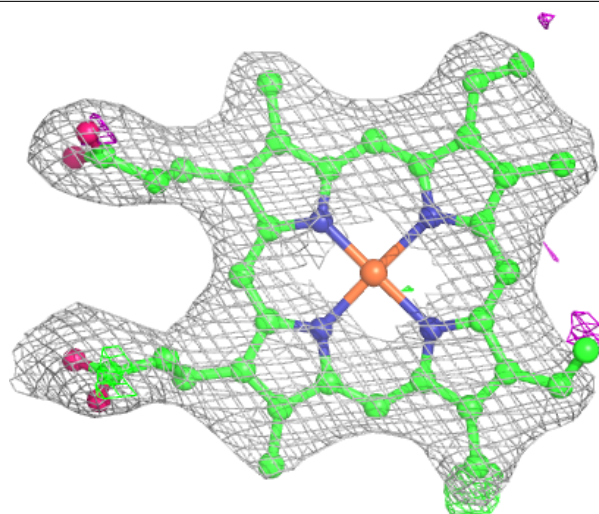
**Electron density around HEM A 201 (B):**

$2mF_o-DF_c$  (at 0.7 rmsd) in gray  
 $mF_o-DF_c$  (at 3 rmsd) in purple (negative)  
and green (positive)



**Electron density around HEM A 201 (A):**

$2mF_o-DF_c$  (at 0.7 rmsd) in gray  
 $mF_o-DF_c$  (at 3 rmsd) in purple (negative)  
and green (positive)



## 6.5 Other polymers [i](#)

There are no such residues in this entry.