



Full wwPDB X-ray Structure Validation Report ⓘ

May 22, 2020 – 07:30 pm BST

PDB ID : 6EU6
Title : Sensor Amt Protein
Authors : Pflueger, T.; Hernandez, C.; Andrade, S.L.A.
Deposited on : 2017-10-28
Resolution : 1.98 Å(reported)

This is a Full wwPDB X-ray Structure Validation Report for a publicly released PDB entry.

We welcome your comments at validation@mail.wwpdb.org

A user guide is available at

<https://www.wwpdb.org/validation/2017/XrayValidationReportHelp>

with specific help available everywhere you see the ⓘ symbol.

The following versions of software and data (see [references ⓘ](#)) were used in the production of this report:

MolProbity : 4.02b-467
Mogul : 1.8.5 (274361), CSD as541be (2020)
Xtriage (Phenix) : 1.13
EDS : 2.11
buster-report : 1.1.7 (2018)
Percentile statistics : 20191225.v01 (using entries in the PDB archive December 25th 2019)
Refmac : 5.8.0158
CCP4 : 7.0.044 (Gargrove)
Ideal geometry (proteins) : Engh & Huber (2001)
Ideal geometry (DNA, RNA) : Parkinson et al. (1996)
Validation Pipeline (wwPDB-VP) : 2.11

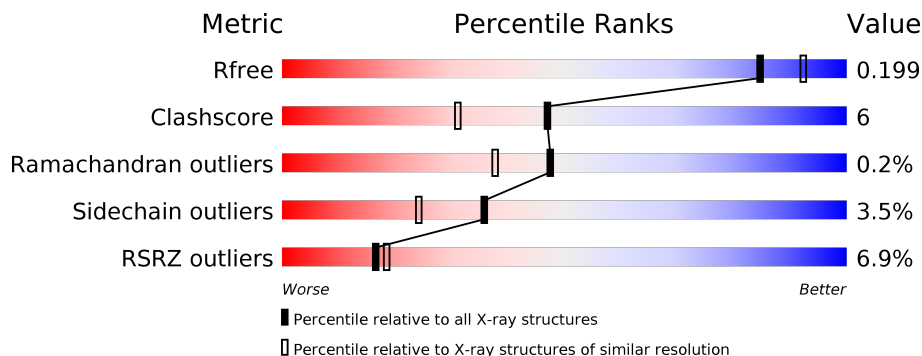
1 Overall quality at a glance

The following experimental techniques were used to determine the structure:

X-RAY DIFFRACTION


The reported resolution of this entry is 1.98 Å.

Percentile scores (ranging between 0-100) for global validation metrics of the entry are shown in the following graphic. The table shows the number of entries on which the scores are based.



Metric	Whole archive (#Entries)	Similar resolution (#Entries, resolution range(Å))
R_{free}	130704	11647 (2.00-1.96)
Clashscore	141614	1014 (1.98-1.98)
Ramachandran outliers	138981	1006 (1.98-1.98)
Sidechain outliers	138945	1006 (1.98-1.98)
RSRZ outliers	127900	11410 (2.00-1.96)

The table below summarises the geometric issues observed across the polymeric chains and their fit to the electron density. The red, orange, yellow and green segments on the lower bar indicate the fraction of residues that contain outliers for ≥ 3 , 2, 1 and 0 types of geometric quality criteria respectively. A grey segment represents the fraction of residues that are not modelled. The numeric value for each fraction is indicated below the corresponding segment, with a dot representing fractions $\leq 5\%$. The upper red bar (where present) indicates the fraction of residues that have poor fit to the electron density. The numeric value is given above the bar.

Mol	Chain	Length	Quality of chain
1	A	405	

The following table lists non-polymeric compounds, carbohydrate monomers and non-standard residues in protein, DNA, RNA chains that are outliers for geometric or electron-density-fit criteria:

Mol	Type	Chain	Res	Chirality	Geometry	Clashes	Electron density
2	MES	A	502	-	-	X	-
3	ZDM	A	503	X	-	-	-

Continued on next page...

Continued from previous page...

Mol	Type	Chain	Res	Chirality	Geometry	Clashes	Electron density
5	NH4	A	505	-	-	X	-
5	NH4	A	506	-	-	X	-

2 Entry composition i

There are 7 unique types of molecules in this entry. The entry contains 3278 atoms, of which 0 are hydrogens and 0 are deuteriums.

In the tables below, the ZeroOcc column contains the number of atoms modelled with zero occupancy, the AltConf column contains the number of residues with at least one atom in alternate conformation and the Trace column contains the number of residues modelled with at most 2 atoms.

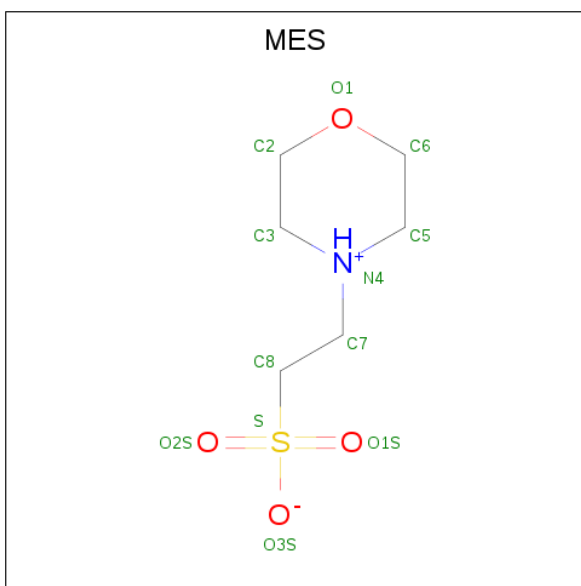
- Molecule 1 is a protein called Ammonium transporter.

Mol	Chain	Residues	Atoms					ZeroOcc	AltConf	Trace
			Total	C	N	O	S			
1	A	405	3078	2027	503	532	16	0	1	0

There are 2 discrepancies between the modelled and reference sequences:

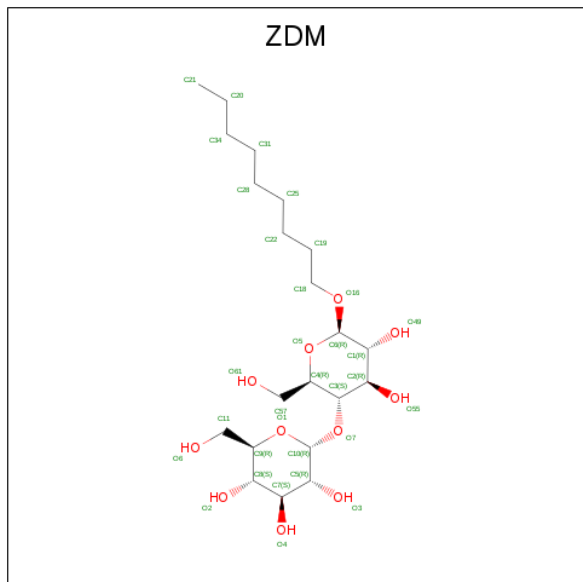
Chain	Residue	Modelled	Actual	Comment	Reference
A	404	ALA	-	expression tag	UNP Q1Q357
A	405	ALA	-	expression tag	UNP Q1Q357

- Molecule 2 is 2-(N-MORPHOLINO)-ETHANESULFONIC ACID (three-letter code: MES) (formula: C₆H₁₃NO₄S).



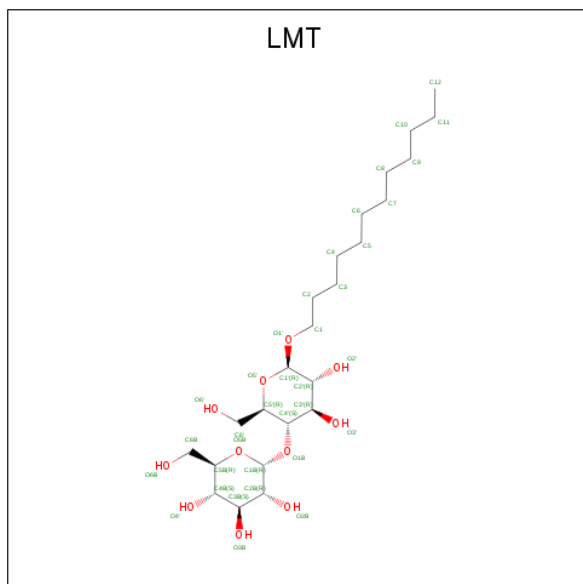
Mol	Chain	Residues	Atoms					ZeroOcc	AltConf
			Total	C	N	O	S		
2	A	1	12	6	1	4	1	0	0
2	A	1	12	6	1	4	1	0	0

- Molecule 3 is nonyl 4-O-alpha-D-glucopyranosyl-beta-D-glucopyranoside (three-letter code: ZDM) (formula: $C_{21}H_{40}O_{11}$).



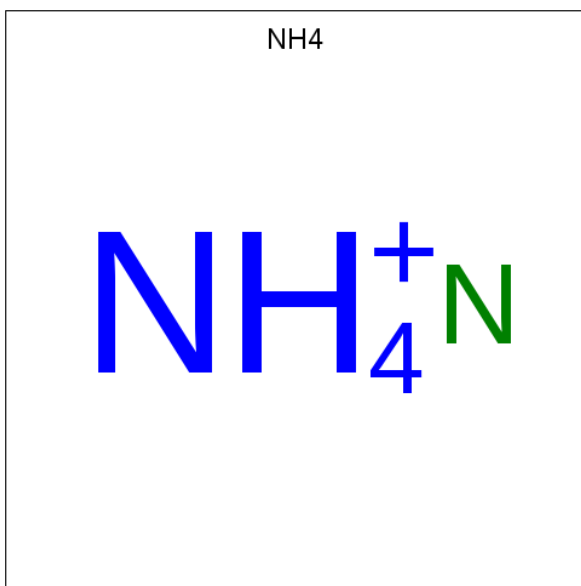
Mol	Chain	Residues	Atoms			ZeroOcc	AltConf
			Total	C	O		
3	A	1	30	19	11	0	0

- Molecule 4 is DODECYL-BETA-D-MALTOSE (three-letter code: LMT) (formula: $C_{24}H_{46}O_{11}$).



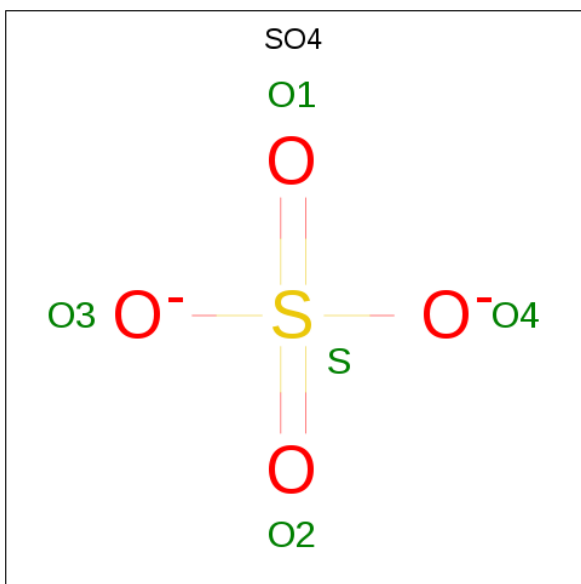
Mol	Chain	Residues	Atoms			ZeroOcc	AltConf
			Total	C	O		
4	A	1	35	24	11	0	0

- Molecule 5 is AMMONIUM ION (three-letter code: NH4) (formula: H₄N).



Mol	Chain	Residues	Atoms	ZeroOcc	AltConf
5	A	1	Total N 1 1	0	0
5	A	1	Total N 1 1	0	0

- Molecule 6 is SULFATE ION (three-letter code: SO4) (formula: O₄S).



Mol	Chain	Residues	Atoms	ZeroOcc	AltConf
6	A	1	Total O S 5 4 1	0	0

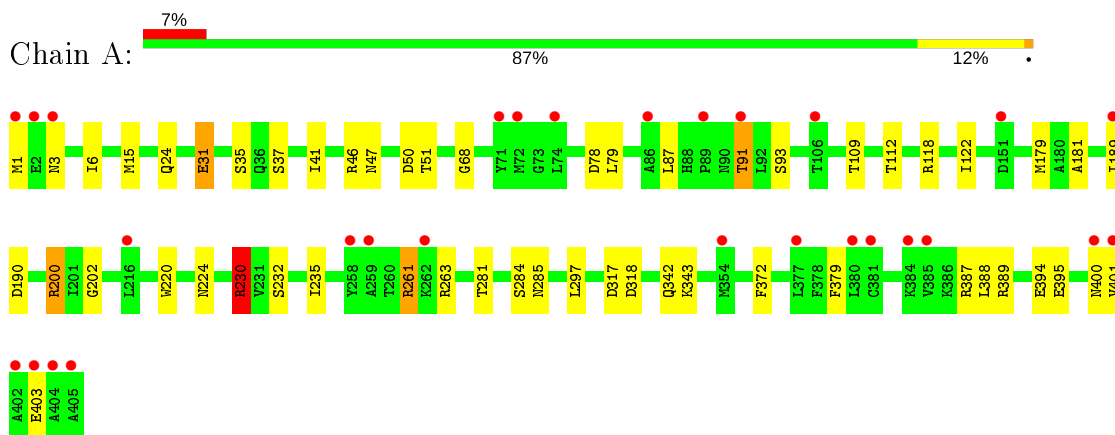
- Molecule 7 is water.

Mol	Chain	Residues	Atoms		ZeroOcc	AltConf
7	A	104	Total 104	O 104	0	0

3 Residue-property plots [i](#)

These plots are drawn for all protein, RNA and DNA chains in the entry. The first graphic for a chain summarises the proportions of the various outlier classes displayed in the second graphic. The second graphic shows the sequence view annotated by issues in geometry and electron density. Residues are color-coded according to the number of geometric quality criteria for which they contain at least one outlier: green = 0, yellow = 1, orange = 2 and red = 3 or more. A red dot above a residue indicates a poor fit to the electron density ($RSRZ > 2$). Stretches of 2 or more consecutive residues without any outlier are shown as a green connector. Residues present in the sample, but not in the model, are shown in grey.

- Molecule 1: Ammonium transporter



4 Data and refinement statistics

Property	Value	Source
Space group	P 63	Depositor
Cell constants a, b, c, α , β , γ	99.75Å 99.75Å 89.07Å 90.00° 90.00° 120.00°	Depositor
Resolution (Å)	86.38 – 1.98 43.52 – 1.98	Depositor EDS
% Data completeness (in resolution range)	99.9 (86.38-1.98) 99.9 (43.52-1.98)	Depositor EDS
R_{merge}	0.11	Depositor
R_{sym}	(Not available)	Depositor
$\langle I/\sigma(I) \rangle$ ¹	2.03 (at 1.98Å)	Xtrriage
Refinement program	REFMAC 5.8.0073	Depositor
R, R_{free}	0.152 , 0.184 0.166 , 0.199	Depositor DCC
R_{free} test set	1694 reflections (4.83%)	wwPDB-VP
Wilson B-factor (Å ²)	32.0	Xtrriage
Anisotropy	0.225	Xtrriage
Bulk solvent k_{sol} (e/Å ³), B_{sol} (Å ²)	0.44 , 94.3	EDS
L-test for twinning ²	$\langle L \rangle = 0.49$, $\langle L^2 \rangle = 0.32$	Xtrriage
Estimated twinning fraction	0.056 for h,-h-k,-l	Xtrriage
F_o, F_c correlation	0.95	EDS
Total number of atoms	3278	wwPDB-VP
Average B, all atoms (Å ²)	38.0	wwPDB-VP

Xtrriage's analysis on translational NCS is as follows: *The largest off-origin peak in the Patterson function is 4.64% of the height of the origin peak. No significant pseudotranslation is detected.*

¹Intensities estimated from amplitudes.

²Theoretical values of $\langle |L| \rangle$, $\langle L^2 \rangle$ for acentric reflections are 0.5, 0.333 respectively for untwinned datasets, and 0.375, 0.2 for perfectly twinned datasets.

5 Model quality [i](#)

5.1 Standard geometry [i](#)

Bond lengths and bond angles in the following residue types are not validated in this section: ZDM, NH4, LMT, SO4, MES

The Z score for a bond length (or angle) is the number of standard deviations the observed value is removed from the expected value. A bond length (or angle) with $|Z| > 5$ is considered an outlier worth inspection. RMSZ is the root-mean-square of all Z scores of the bond lengths (or angles).

Mol	Chain	Bond lengths		Bond angles	
		RMSZ	# Z >5	RMSZ	# Z >5
1	A	0.96	3/3152 (0.1%)	0.94	10/4278 (0.2%)

All (3) bond length outliers are listed below:

Mol	Chain	Res	Type	Atoms	Z	Observed(Å)	Ideal(Å)
1	A	31	GLU	CD-OE1	6.04	1.32	1.25
1	A	31	GLU	CD-OE2	5.95	1.32	1.25
1	A	394	GLU	CD-OE1	5.77	1.31	1.25

All (10) bond angle outliers are listed below:

Mol	Chain	Res	Type	Atoms	Z	Observed(°)	Ideal(°)
1	A	15	MET	CG-SD-CE	8.04	113.07	100.20
1	A	318	ASP	CB-CG-OD2	-7.27	111.76	118.30
1	A	394	GLU	OE1-CD-OE2	6.28	130.84	123.30
1	A	46	ARG	NE-CZ-NH2	-6.27	117.17	120.30
1	A	317	ASP	CB-CG-OD1	5.76	123.48	118.30
1	A	78	ASP	CB-CG-OD1	5.45	123.20	118.30
1	A	230[A]	ARG	NE-CZ-NH2	-5.31	117.64	120.30
1	A	230[B]	ARG	NE-CZ-NH2	-5.31	117.64	120.30
1	A	389	ARG	NE-CZ-NH1	5.06	122.83	120.30
1	A	261	ARG	NE-CZ-NH2	-5.04	117.78	120.30

There are no chirality outliers.

There are no planarity outliers.

5.2 Too-close contacts

In the following table, the Non-H and H(model) columns list the number of non-hydrogen atoms and hydrogen atoms in the chain respectively. The H(added) column lists the number of hydrogen atoms added and optimized by MolProbity. The Clashes column lists the number of clashes within the asymmetric unit, whereas Symm-Clashes lists symmetry related clashes.

Mol	Chain	Non-H	H(model)	H(added)	Clashes	Symm-Clashes
1	A	3078	0	3135	38	10
2	A	24	0	26	7	0
3	A	30	0	32	0	0
4	A	35	0	46	3	0
5	A	2	0	0	9	0
6	A	5	0	0	0	0
7	A	104	0	0	3	0
All	All	3278	0	3239	40	10

The all-atom clashscore is defined as the number of clashes found per 1000 atoms (including hydrogen atoms). The all-atom clashscore for this structure is 6.

All (40) close contacts within the same asymmetric unit are listed below, sorted by their clash magnitude.

Atom-1	Atom-2	Interatomic distance (Å)	Clash overlap (Å)
1:A:230[B]:ARG:NH2	2:A:502:MES:O2S	2.08	0.86
1:A:230[B]:ARG:HH12	2:A:502:MES:H72	1.44	0.79
1:A:50:ASP:OD1	5:A:505:NH4:N	2.22	0.73
1:A:224:ASN:HD21	1:A:281:THR:HA	1.56	0.70
1:A:47:ASN:O	5:A:505:NH4:N	2.26	0.68
1:A:24:GLN:OE1	5:A:505:NH4:N	2.26	0.67
1:A:109:THR:OG1	5:A:506:NH4:N	2.28	0.65
1:A:342:GLN:NE2	7:A:601:HOH:O	2.29	0.65
1:A:109:THR:O	5:A:506:NH4:N	2.30	0.64
1:A:47:ASN:OD1	5:A:506:NH4:N	2.31	0.63
1:A:387:ARG:NH1	1:A:388:LEU:H	1.97	0.63
1:A:112:THR:OG1	5:A:506:NH4:N	2.34	0.60
1:A:190:ASP:N	1:A:190:ASP:OD1	2.35	0.60
1:A:122:ILE:HG12	4:A:504:LMT:H6E	1.83	0.60
1:A:31:GLU:OE2	5:A:506:NH4:N	2.36	0.59
1:A:179:MET:HE3	1:A:372:PHE:CE1	2.38	0.57
1:A:230[B]:ARG:NH1	2:A:502:MES:H72	2.18	0.57
1:A:297:LEU:C	1:A:297:LEU:HD23	2.29	0.53
1:A:200:ARG:NH1	1:A:202:GLY:O	2.42	0.53
1:A:261:ARG:O	1:A:263:ARG:NH2	2.42	0.52

Continued on next page...

Continued from previous page...

Atom-1	Atom-2	Interatomic distance (Å)	Clash overlap (Å)
1:A:51:THR:OG1	5:A:505:NH4:N	2.44	0.51
1:A:285:ASN:HD22	2:A:502:MES:C8	2.25	0.50
1:A:68:GLY:HA2	1:A:79:LEU:HD12	1.95	0.48
1:A:35:SER:CB	7:A:653:HOH:O	2.62	0.48
1:A:285:ASN:HD22	2:A:502:MES:H81	1.79	0.48
1:A:35:SER:HB3	7:A:653:HOH:O	2.14	0.47
2:A:501:MES:C5	2:A:502:MES:H62	2.44	0.47
1:A:224:ASN:ND2	1:A:284:SER:OG	2.46	0.46
1:A:122:ILE:HD11	4:A:504:LMT:H12	1.97	0.46
1:A:41:ILE:HD12	1:A:400:ASN:HB3	1.97	0.45
1:A:122:ILE:CG1	4:A:504:LMT:H6E	2.48	0.44
1:A:230[A]:ARG:HB2	1:A:230[A]:ARG:CZ	2.47	0.43
1:A:189:ILE:HG23	1:A:395:GLU:OE1	2.18	0.43
1:A:261:ARG:HB3	1:A:263:ARG:NH2	2.34	0.42
1:A:6:ILE:HG12	1:A:91:THR:HG21	2.02	0.42
1:A:232:SER:O	1:A:235:ILE:HG22	2.20	0.42
1:A:6:ILE:HG23	1:A:91:THR:HG23	2.00	0.42
1:A:181:ALA:HB2	1:A:379:PHE:CE2	2.55	0.41
2:A:501:MES:H51	2:A:502:MES:H62	2.02	0.41
1:A:235:ILE:HD13	1:A:235:ILE:HG21	1.80	0.40

All (10) symmetry-related close contacts are listed below. The label for Atom-2 includes the symmetry operator and encoded unit-cell translations to be applied.

Atom-1	Atom-2	Interatomic distance (Å)	Clash overlap (Å)
1:A:200:ARG:NH2	1:A:403:GLU:CD[2_445]	0.50	1.70
1:A:200:ARG:CZ	1:A:403:GLU:OE1[2_445]	0.66	1.54
1:A:200:ARG:NH2	1:A:403:GLU:OE2[2_445]	0.82	1.38
1:A:200:ARG:NE	1:A:403:GLU:OE1[2_445]	0.92	1.28
1:A:200:ARG:NH2	1:A:403:GLU:OE1[2_445]	1.40	0.80
1:A:200:ARG:CZ	1:A:403:GLU:CD[2_445]	1.41	0.79
1:A:200:ARG:NH1	1:A:403:GLU:OE1[2_445]	1.94	0.26
1:A:200:ARG:CZ	1:A:403:GLU:OE2[2_445]	1.96	0.24
1:A:200:ARG:NH2	1:A:403:GLU:CG[2_445]	1.96	0.24
1:A:200:ARG:NE	1:A:403:GLU:CD[2_445]	2.13	0.07

5.3 Torsion angles [i](#)

5.3.1 Protein backbone [i](#)

In the following table, the Percentiles column shows the percent Ramachandran outliers of the chain as a percentile score with respect to all X-ray entries followed by that with respect to entries of similar resolution.

The Analysed column shows the number of residues for which the backbone conformation was analysed, and the total number of residues.

Mol	Chain	Analysed	Favoured	Allowed	Outliers	Percentiles
1	A	404/405 (100%)	389 (96%)	14 (4%)	1 (0%)	47 38

All (1) Ramachandran outliers are listed below:

Mol	Chain	Res	Type
1	A	93	SER

5.3.2 Protein sidechains [i](#)

In the following table, the Percentiles column shows the percent sidechain outliers of the chain as a percentile score with respect to all X-ray entries followed by that with respect to entries of similar resolution.

The Analysed column shows the number of residues for which the sidechain conformation was analysed, and the total number of residues.

Mol	Chain	Analysed	Rotameric	Outliers	Percentiles
1	A	317/316 (100%)	305 (96%)	12 (4%)	33 21

All (12) residues with a non-rotameric sidechain are listed below:

Mol	Chain	Res	Type
1	A	1	MET
1	A	3	ASN
1	A	37	SER
1	A	87	LEU
1	A	91	THR
1	A	118	ARG
1	A	200	ARG
1	A	220	TRP
1	A	230[A]	ARG
1	A	230[B]	ARG

Continued on next page...

Continued from previous page...

Mol	Chain	Res	Type
1	A	343	LYS
1	A	401	VAL

Some sidechains can be flipped to improve hydrogen bonding and reduce clashes. All (2) such sidechains are listed below:

Mol	Chain	Res	Type
1	A	224	ASN
1	A	355	HIS

5.3.3 RNA [i](#)

There are no RNA molecules in this entry.

5.4 Non-standard residues in protein, DNA, RNA chains [i](#)

There are no non-standard protein/DNA/RNA residues in this entry.

5.5 Carbohydrates [i](#)

There are no carbohydrates in this entry.

5.6 Ligand geometry [i](#)

Of 7 ligands modelled in this entry, 2 are modelled with single atom - leaving 5 for Mogul analysis.

In the following table, the Counts columns list the number of bonds (or angles) for which Mogul statistics could be retrieved, the number of bonds (or angles) that are observed in the model and the number of bonds (or angles) that are defined in the Chemical Component Dictionary. The Link column lists molecule types, if any, to which the group is linked. The Z score for a bond length (or angle) is the number of standard deviations the observed value is removed from the expected value. A bond length (or angle) with $|Z| > 2$ is considered an outlier worth inspection. RMSZ is the root-mean-square of all Z scores of the bond lengths (or angles).

Mol	Type	Chain	Res	Link	Bond lengths			Bond angles		
					Counts	RMSZ	# Z > 2	Counts	RMSZ	# Z > 2
2	MES	A	501	-	12,12,12	2.26	1 (8%)	14,16,16	1.41	3 (21%)
6	SO4	A	507	-	4,4,4	0.45	0	6,6,6	0.77	0
3	ZDM	A	503	-	31,31,33	0.83	1 (3%)	42,42,44	2.99	15 (35%)

Mol	Type	Chain	Res	Link	Bond lengths			Bond angles		
					Counts	RMSZ	# Z > 2	Counts	RMSZ	# Z > 2
4	LMT	A	504	-	36,36,36	0.88	2 (5%)	47,47,47	1.19	4 (8%)
2	MES	A	502	-	12,12,12	2.18	1 (8%)	14,16,16	1.87	3 (21%)

In the following table, the Chirals column lists the number of chiral outliers, the number of chiral centers analysed, the number of these observed in the model and the number defined in the Chemical Component Dictionary. Similar counts are reported in the Torsion and Rings columns. '-' means no outliers of that kind were identified.

Mol	Type	Chain	Res	Link	Chirals	Torsions	Rings
2	MES	A	501	-	-	0/6/14/14	0/1/1/1
2	MES	A	502	-	-	4/6/14/14	0/1/1/1
3	ZDM	A	503	-	3/3/10/10	8/16/56/58	0/2/2/2
4	LMT	A	504	-	-	7/21/61/61	0/2/2/2

All (5) bond length outliers are listed below:

Mol	Chain	Res	Type	Atoms	Z	Observed(Å)	Ideal(Å)
2	A	502	MES	C8-S	-7.19	1.67	1.77
2	A	501	MES	C8-S	-7.15	1.67	1.77
3	A	503	ZDM	O16-C6	3.04	1.45	1.40
4	A	504	LMT	C3'-C2'	-2.27	1.46	1.52
4	A	504	LMT	C3'-C4'	-2.16	1.46	1.52

All (25) bond angle outliers are listed below:

Mol	Chain	Res	Type	Atoms	Z	Observed(°)	Ideal(°)
3	A	503	ZDM	O16-C6-C1	11.24	125.84	108.30
3	A	503	ZDM	C18-O16-C6	7.55	126.36	113.84
3	A	503	ZDM	O7-C10-C5	5.22	121.64	108.10
2	A	502	MES	O2S-S-C8	4.70	112.57	106.92
3	A	503	ZDM	C1-C2-C3	4.61	120.21	109.68
3	A	503	ZDM	C10-C5-C7	-4.56	100.50	110.00
3	A	503	ZDM	C6-O5-C4	4.00	121.55	113.69
3	A	503	ZDM	O1-C10-C5	3.94	118.69	110.35
3	A	503	ZDM	C10-O1-C9	3.48	120.52	113.69
3	A	503	ZDM	O49-C1-C6	3.33	118.13	110.05
3	A	503	ZDM	O1-C9-C8	3.27	115.62	109.69
3	A	503	ZDM	O7-C10-O1	3.18	119.56	110.67
3	A	503	ZDM	C6-C1-C2	3.17	116.60	110.00
2	A	502	MES	C5-N4-C3	3.16	115.95	108.83
4	A	504	LMT	C4B-C3B-C2B	-3.16	105.31	110.82

Continued on next page...

Continued from previous page...

Mol	Chain	Res	Type	Atoms	Z	Observed(°)	Ideal(°)
2	A	501	MES	O3S-S-O1S	-3.07	103.77	111.27
4	A	504	LMT	O5B-C5B-C6B	2.99	113.86	106.44
3	A	503	ZDM	O55-C2-C1	-2.84	103.79	110.35
2	A	501	MES	O3S-S-C8	2.81	110.32	105.77
4	A	504	LMT	O2'-C2'-C3'	-2.58	104.38	110.35
2	A	501	MES	O1S-S-C8	2.41	109.81	106.92
3	A	503	ZDM	O5-C6-O16	-2.22	104.71	109.97
3	A	503	ZDM	O4-C7-C5	2.17	115.36	110.35
4	A	504	LMT	O3B-C3B-C2B	2.13	115.27	110.35
2	A	502	MES	C7-N4-C5	-2.12	105.81	111.23

All (3) chirality outliers are listed below:

Mol	Chain	Res	Type	Atom
3	A	503	ZDM	C10
3	A	503	ZDM	C3
3	A	503	ZDM	C6

All (19) torsion outliers are listed below:

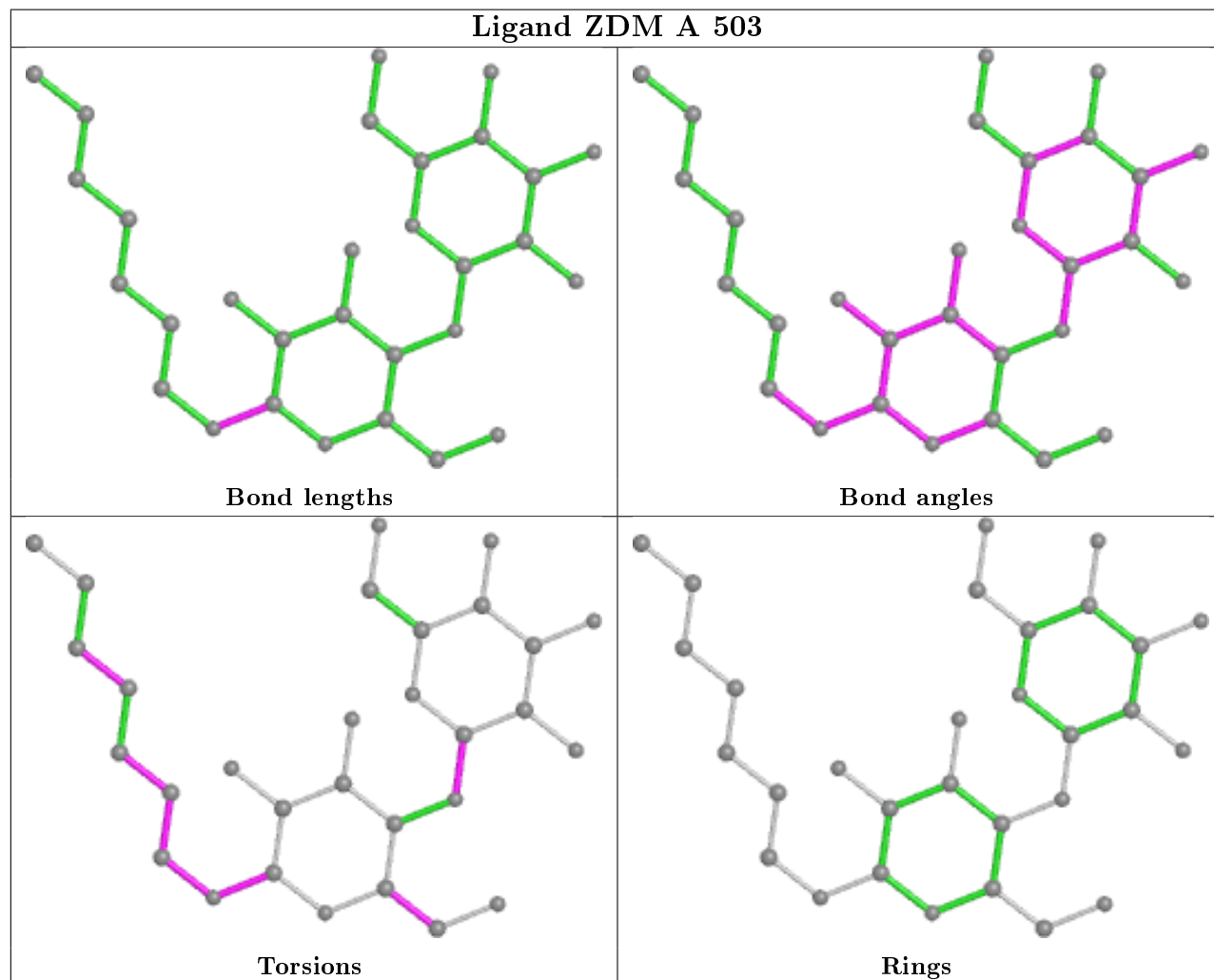
Mol	Chain	Res	Type	Atoms
3	A	503	ZDM	C1-C6-O16-C18
3	A	503	ZDM	O5-C6-O16-C18
3	A	503	ZDM	C19-C18-O16-C6
2	A	502	MES	C7-C8-S-O3S
4	A	504	LMT	C4B-C5B-C6B-O6B
4	A	504	LMT	C2-C3-C4-C5
4	A	504	LMT	C5-C6-C7-C8
3	A	503	ZDM	O16-C18-C19-C22
3	A	503	ZDM	C18-C19-C22-C25
4	A	504	LMT	C3-C4-C5-C6
3	A	503	ZDM	O5-C4-C57-O61
4	A	504	LMT	O5B-C5B-C6B-O6B
4	A	504	LMT	C9-C10-C11-C12
4	A	504	LMT	C11-C10-C9-C8
3	A	503	ZDM	C22-C25-C28-C31
3	A	503	ZDM	C5-C10-O7-C3
2	A	502	MES	C7-C8-S-O1S
2	A	502	MES	C7-C8-S-O2S
2	A	502	MES	C8-C7-N4-C5

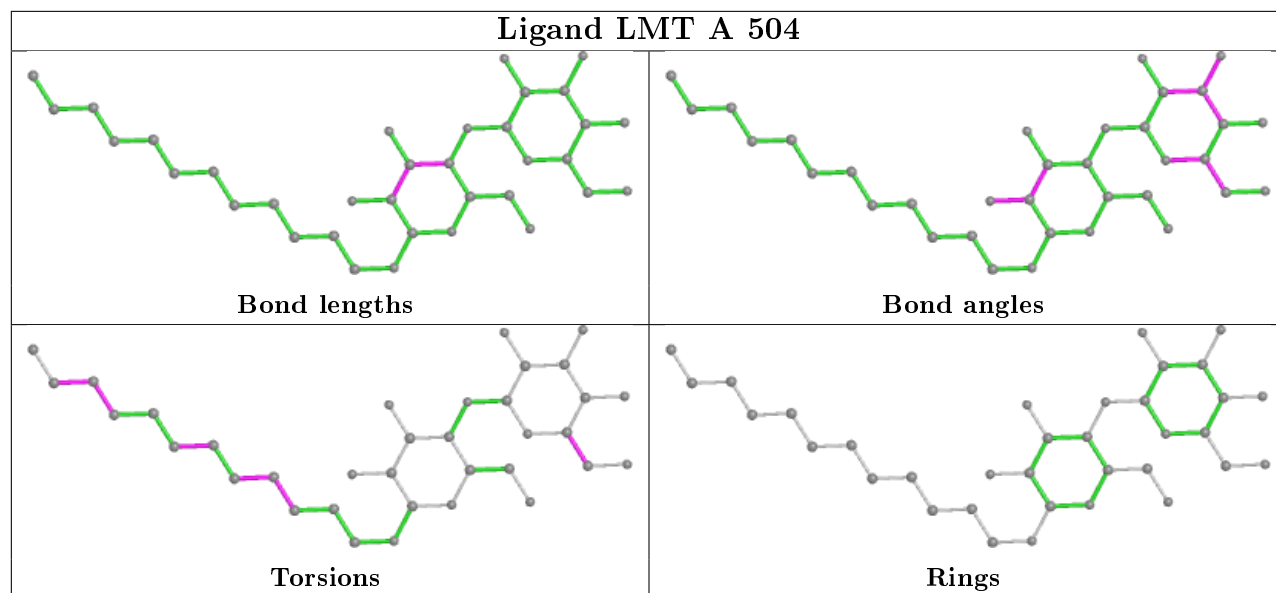
There are no ring outliers.

3 monomers are involved in 10 short contacts:

Mol	Chain	Res	Type	Clashes	Symm-Clashes
2	A	501	MES	2	0
4	A	504	LMT	3	0
2	A	502	MES	7	0

The following is a two-dimensional graphical depiction of Mogul quality analysis of bond lengths, bond angles, torsion angles, and ring geometry for all instances of the Ligand of Interest. In addition, ligands with molecular weight > 250 and outliers as shown on the validation Tables will also be included. For torsion angles, if less than 5% of the Mogul distribution of torsion angles is within 10 degrees of the torsion angle in question, then that torsion angle is considered an outlier. Any bond that is central to one or more torsion angles identified as an outlier by Mogul will be highlighted in the graph. For rings, the root-mean-square deviation (RMSD) between the ring in question and similar rings identified by Mogul is calculated over all ring torsion angles. If the average RMSD is greater than 60 degrees and the minimal RMSD between the ring in question and any Mogul-identified rings is also greater than 60 degrees, then that ring is considered an outlier. The outliers are highlighted in purple. The color gray indicates Mogul did not find sufficient equivalents in the CSD to analyse the geometry.





5.7 Other polymers [i](#)

There are no such residues in this entry.

5.8 Polymer linkage issues [i](#)

There are no chain breaks in this entry.

6 Fit of model and data

6.1 Protein, DNA and RNA chains

In the following table, the column labelled '#RSRZ > 2' contains the number (and percentage) of RSRZ outliers, followed by percent RSRZ outliers for the chain as percentile scores relative to all X-ray entries and entries of similar resolution. The OWAB column contains the minimum, median, 95th percentile and maximum values of the occupancy-weighted average B-factor per residue. The column labelled 'Q < 0.9' lists the number of (and percentage) of residues with an average occupancy less than 0.9.

Mol	Chain	Analysed	<RSRZ>	#RSRZ>2	OWAB(Å ²)	Q<0.9
1	A	405/405 (100%)	0.12	28 (6%) 16 18	24, 32, 63, 84	0

All (28) RSRZ outliers are listed below:

Mol	Chain	Res	Type	RSRZ
1	A	404	ALA	7.4
1	A	2	GLU	4.9
1	A	401	VAL	4.4
1	A	1	MET	4.1
1	A	72	MET	4.0
1	A	71	TYR	4.0
1	A	402	ALA	3.8
1	A	385	VAL	3.7
1	A	91	THR	3.7
1	A	86	ALA	3.4
1	A	354	MET	3.4
1	A	380	LEU	3.4
1	A	377	LEU	3.2
1	A	403	GLU	3.1
1	A	3	ASN	2.8
1	A	189	ILE	2.7
1	A	74	LEU	2.7
1	A	405	ALA	2.7
1	A	258	TYR	2.6
1	A	384	LYS	2.5
1	A	106	THR	2.4
1	A	216	LEU	2.3
1	A	89	PRO	2.3
1	A	259	ALA	2.2
1	A	400	ASN	2.1
1	A	381	CYS	2.0
1	A	262	LYS	2.0

Continued on next page...

Continued from previous page...

Mol	Chain	Res	Type	RSRZ
1	A	151	ASP	2.0

6.2 Non-standard residues in protein, DNA, RNA chains [i](#)

There are no non-standard protein/DNA/RNA residues in this entry.

6.3 Carbohydrates [i](#)

There are no carbohydrates in this entry.

6.4 Ligands [i](#)

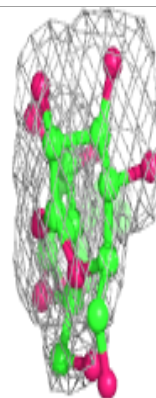
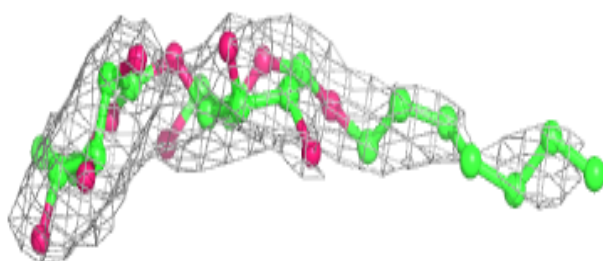
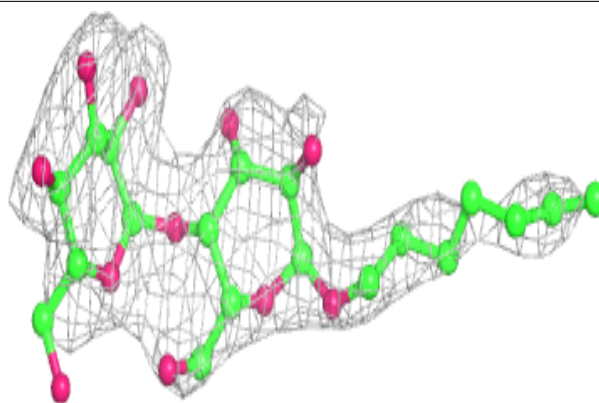
In the following table, the Atoms column lists the number of modelled atoms in the group and the number defined in the chemical component dictionary. The B-factors column lists the minimum, median, 95th percentile and maximum values of B factors of atoms in the group. The column labelled 'Q< 0.9' lists the number of atoms with occupancy less than 0.9.

Mol	Type	Chain	Res	Atoms	RSCC	RSR	B-factors(Å ²)	Q<0.9
3	ZDM	A	503	30/32	0.84	0.29	59,73,88,90	0
4	LMT	A	504	35/35	0.89	0.20	42,52,71,83	0
2	MES	A	502	12/12	0.91	0.25	58,63,89,104	0
6	SO4	A	507	5/5	0.97	0.12	58,59,63,75	0
2	MES	A	501	12/12	0.98	0.07	32,34,37,42	0
5	NH4	A	506	1/1	0.99	0.14	12,12,12,12	0
5	NH4	A	505	1/1	1.00	0.19	13,13,13,13	0

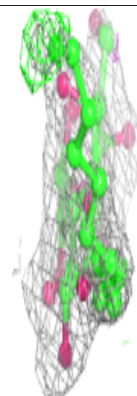
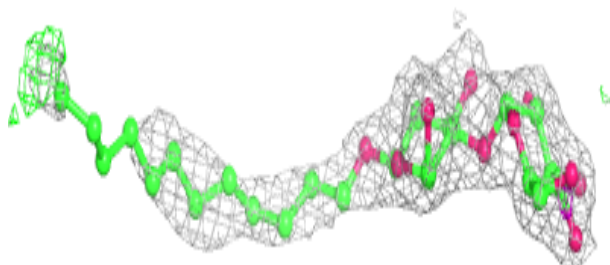
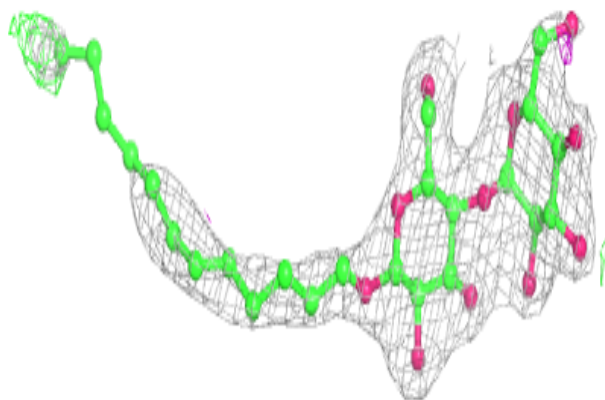
The following is a graphical depiction of the model fit to experimental electron density of all instances of the Ligand of Interest. In addition, ligands with molecular weight > 250 and outliers as shown on the geometry validation Tables will also be included. Each fit is shown from different orientation to approximate a three-dimensional view.

Electron density around ZDM A 503:

$2mF_o-DF_c$ (at 0.7 rmsd) in gray
 mF_o-DF_c (at 3 rmsd) in purple (negative)
and green (positive)

**Electron density around LMT A 504:**

$2mF_o-DF_c$ (at 0.7 rmsd) in gray
 mF_o-DF_c (at 3 rmsd) in purple (negative)
and green (positive)



6.5 Other polymers

There are no such residues in this entry.