



# Full wwPDB X-ray Structure Validation Report ⓘ

May 13, 2020 – 03:56 am BST

PDB ID : 6EIQ  
Title : DYRK1A in complex with XMD14-124  
Authors : Rothweiler, U.  
Deposited on : 2017-09-19  
Resolution : 2.30 Å(reported)

This is a Full wwPDB X-ray Structure Validation Report for a publicly released PDB entry.

We welcome your comments at [validation@mail.wwpdb.org](mailto:validation@mail.wwpdb.org)

A user guide is available at

<https://www.wwpdb.org/validation/2017/XrayValidationReportHelp>

with specific help available everywhere you see the ⓘ symbol.

---

The following versions of software and data (see [references ⓘ](#)) were used in the production of this report:

MolProbity : 4.02b-467  
Mogul : 1.8.5 (274361), CSD as541be (2020)  
Xtriage (Phenix) : 1.13  
EDS : 2.11  
buster-report : 1.1.7 (2018)  
Percentile statistics : 20191225.v01 (using entries in the PDB archive December 25th 2019)  
Refmac : 5.8.0158  
CCP4 : 7.0.044 (Gargrove)  
Ideal geometry (proteins) : Engh & Huber (2001)  
Ideal geometry (DNA, RNA) : Parkinson et al. (1996)  
Validation Pipeline (wwPDB-VP) : 2.11

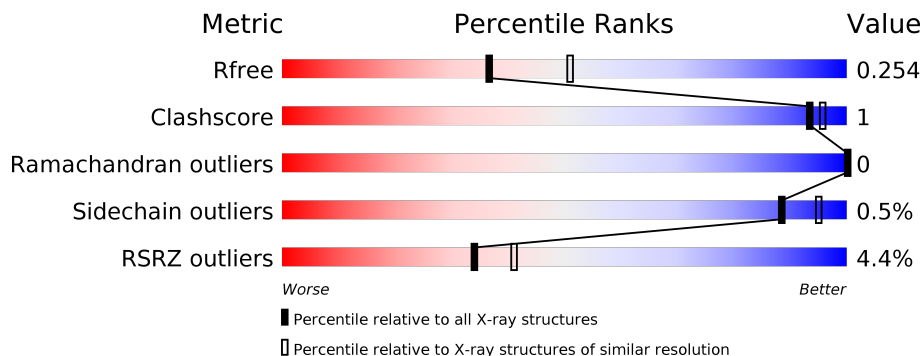
# 1 Overall quality at a glance

The following experimental techniques were used to determine the structure:

*X-RAY DIFFRACTION*

The reported resolution of this entry is 2.30 Å.

Percentile scores (ranging between 0-100) for global validation metrics of the entry are shown in the following graphic. The table shows the number of entries on which the scores are based.



Metric	Whole archive (#Entries)	Similar resolution (#Entries, resolution range(Å))
$R_{free}$	130704	5042 (2.30-2.30)
Clashscore	141614	5643 (2.30-2.30)
Ramachandran outliers	138981	5575 (2.30-2.30)
Sidechain outliers	138945	5575 (2.30-2.30)
RSRZ outliers	127900	4938 (2.30-2.30)

The table below summarises the geometric issues observed across the polymeric chains and their fit to the electron density. The red, orange, yellow and green segments on the lower bar indicate the fraction of residues that contain outliers for  $\geq 3$ , 2, 1 and 0 types of geometric quality criteria respectively. A grey segment represents the fraction of residues that are not modelled. The numeric value for each fraction is indicated below the corresponding segment, with a dot representing fractions  $\leq 5\%$ . The upper red bar (where present) indicates the fraction of residues that have poor fit to the electron density. The numeric value is given above the bar.

Mol	Chain	Length	Quality of chain
1	A	368	
1	B	368	
1	C	368	
1	D	368	

## 2 Entry composition i

There are 3 unique types of molecules in this entry. The entry contains 11312 atoms, of which 0 are hydrogens and 0 are deuteriums.

In the tables below, the ZeroOcc column contains the number of atoms modelled with zero occupancy, the AltConf column contains the number of residues with at least one atom in alternate conformation and the Trace column contains the number of residues modelled with at most 2 atoms.

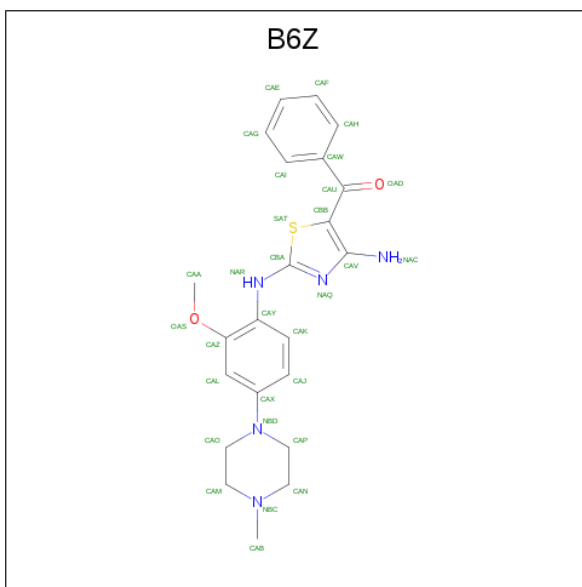
- Molecule 1 is a protein called Dual specificity tyrosine-phosphorylation-regulated kinase 1A.

Mol	Chain	Residues	Atoms						ZeroOcc	AltConf	Trace
			Total	C	N	O	P	S			
1	A	342	2794	1798	477	501	1	17	0	0	0
1	B	340	2765	1780	472	495	1	17	0	0	0
1	C	333	2678	1724	452	484	1	17	0	0	0
1	D	333	2711	1752	455	486	1	17	0	0	0

There are 12 discrepancies between the modelled and reference sequences:

Chain	Residue	Modelled	Actual	Comment	Reference
A	123	GLY	-	expression tag	UNP Q13627
A	124	ALA	-	expression tag	UNP Q13627
A	125	SER	-	expression tag	UNP Q13627
B	123	GLY	-	expression tag	UNP Q13627
B	124	ALA	-	expression tag	UNP Q13627
B	125	SER	-	expression tag	UNP Q13627
C	123	GLY	-	expression tag	UNP Q13627
C	124	ALA	-	expression tag	UNP Q13627
C	125	SER	-	expression tag	UNP Q13627
D	123	GLY	-	expression tag	UNP Q13627
D	124	ALA	-	expression tag	UNP Q13627
D	125	SER	-	expression tag	UNP Q13627

- Molecule 2 is [4-azanyl-2-[[2-methoxy-4-(4-methylpiperazin-1-yl)phenyl]amino]-1,3-thiazol-5-yl]-phenyl-methanone (three-letter code: B6Z) (formula: C<sub>22</sub>H<sub>25</sub>N<sub>5</sub>O<sub>2</sub>S).



Mol	Chain	Residues	Atoms					ZeroOcc	AltConf
2	A	1	Total	C	N	O	S	0	0
			30	22	5	2	1		
2	B	1	Total	C	N	O	S	0	0
			30	22	5	2	1		
2	C	1	Total	C	N	O	S	0	0
			30	22	5	2	1		
2	D	1	Total	C	N	O	S	0	0
			30	22	5	2	1		

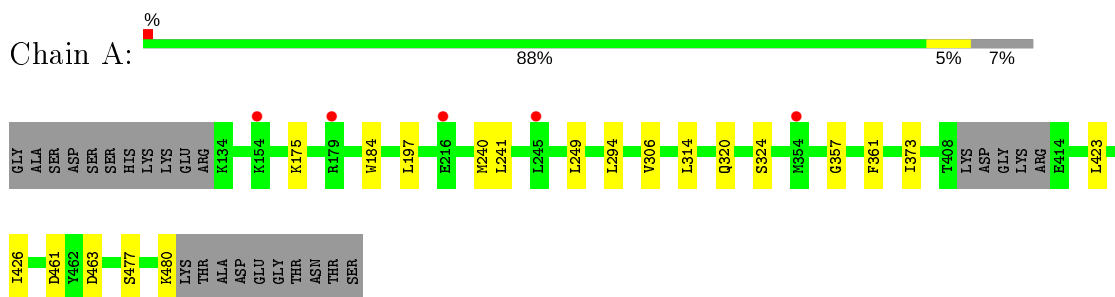
- Molecule 3 is water.

Mol	Chain	Residues	Atoms		ZeroOcc	AltConf
3	A	82	Total	O	0	0
			82	82		
3	B	52	Total	O	0	0
			52	52		
3	C	47	Total	O	0	0
			47	47		
3	D	63	Total	O	0	0
			63	63		

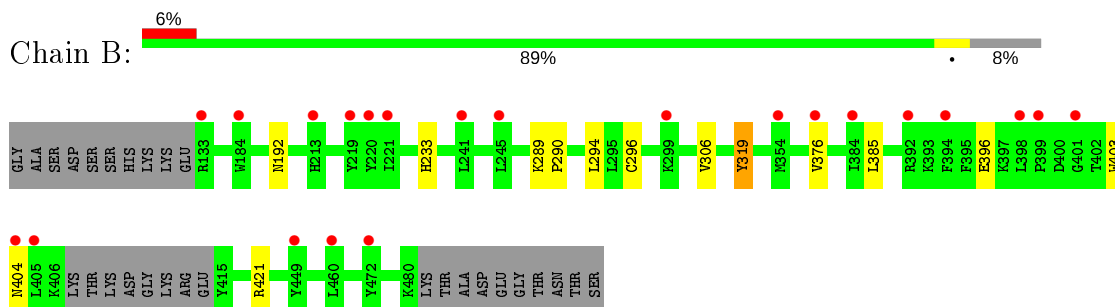
### 3 Residue-property plots [i](#)

These plots are drawn for all protein, RNA and DNA chains in the entry. The first graphic for a chain summarises the proportions of the various outlier classes displayed in the second graphic. The second graphic shows the sequence view annotated by issues in geometry and electron density. Residues are color-coded according to the number of geometric quality criteria for which they contain at least one outlier: green = 0, yellow = 1, orange = 2 and red = 3 or more. A red dot above a residue indicates a poor fit to the electron density ( $RSRZ > 2$ ). Stretches of 2 or more consecutive residues without any outlier are shown as a green connector. Residues present in the sample, but not in the model, are shown in grey.

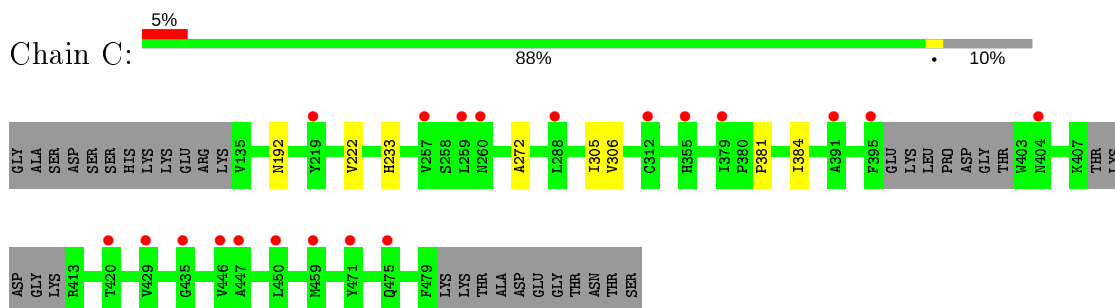
- Molecule 1: Dual specificity tyrosine-phosphorylation-regulated kinase 1A



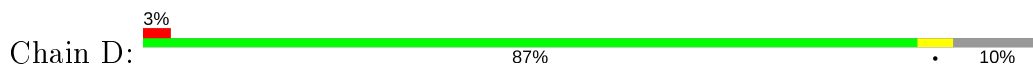
- Molecule 1: Dual specificity tyrosine-phosphorylation-regulated kinase 1A

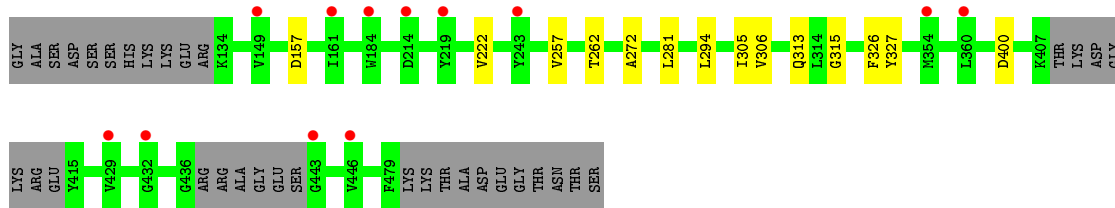


- Molecule 1: Dual specificity tyrosine-phosphorylation-regulated kinase 1A



- Molecule 1: Dual specificity tyrosine-phosphorylation-regulated kinase 1A





## 4 Data and refinement statistics i

Property	Value	Source
Space group	P 21 21 21	Depositor
Cell constants a, b, c, $\alpha$ , $\beta$ , $\gamma$	87.56Å 87.60Å 229.04Å 90.00° 90.00° 90.00°	Depositor
Resolution (Å)	48.10 – 2.30 48.10 – 2.30	Depositor EDS
% Data completeness (in resolution range)	97.0 (48.10-2.30) 97.0 (48.10-2.30)	Depositor EDS
$R_{merge}$	(Not available)	Depositor
$R_{sym}$	(Not available)	Depositor
$\langle I/\sigma(I) \rangle$ <sup>1</sup>	1.30 (at 2.29Å)	Xtriage
Refinement program	REFMAC 5.8.0155	Depositor
R, $R_{free}$	0.218 , 0.252 0.220 , 0.254	Depositor DCC
$R_{free}$ test set	3846 reflections (4.99%)	wwPDB-VP
Wilson B-factor (Å <sup>2</sup> )	46.0	Xtriage
Anisotropy	0.457	Xtriage
Bulk solvent $k_{sol}$ (e/Å <sup>3</sup> ), $B_{sol}$ (Å <sup>2</sup> )	0.30 , 17.8	EDS
L-test for twinning <sup>2</sup>	$\langle  L  \rangle = 0.40$ , $\langle L^2 \rangle = 0.22$	Xtriage
Estimated twinning fraction	0.206 for k,h,-l	Xtriage
Reported twinning fraction	0.751 for H, K, L 0.249 for K, H, -L	Depositor
Outliers	0 of 77070 reflections	Xtriage
$F_o, F_c$ correlation	0.94	EDS
Total number of atoms	11312	wwPDB-VP
Average B, all atoms (Å <sup>2</sup> )	56.0	wwPDB-VP

Xtriage's analysis on translational NCS is as follows: *The largest off-origin peak in the Patterson function is 2.58% of the height of the origin peak. No significant pseudotranslation is detected.*

<sup>1</sup>Intensities estimated from amplitudes.

<sup>2</sup>Theoretical values of  $\langle |L| \rangle$ ,  $\langle L^2 \rangle$  for acentric reflections are 0.5, 0.333 respectively for untwinned datasets, and 0.375, 0.2 for perfectly twinned datasets.

## 5 Model quality [i](#)

### 5.1 Standard geometry [i](#)

Bond lengths and bond angles in the following residue types are not validated in this section: B6Z, PTR

The Z score for a bond length (or angle) is the number of standard deviations the observed value is removed from the expected value. A bond length (or angle) with  $|Z| > 5$  is considered an outlier worth inspection. RMSZ is the root-mean-square of all Z scores of the bond lengths (or angles).

Mol	Chain	Bond lengths		Bond angles	
		RMSZ	# Z  >5	RMSZ	# Z  >5
1	A	0.42	0/2842	0.66	0/3833
1	B	0.40	0/2812	0.63	0/3793
1	C	0.40	0/2724	0.61	0/3686
1	D	0.40	0/2758	0.62	0/3723
All	All	0.40	0/11136	0.63	0/15035

There are no bond length outliers.

There are no bond angle outliers.

There are no chirality outliers.

There are no planarity outliers.

### 5.2 Too-close contacts [i](#)

In the following table, the Non-H and H(model) columns list the number of non-hydrogen atoms and hydrogen atoms in the chain respectively. The H(added) column lists the number of hydrogen atoms added and optimized by MolProbity. The Clashes column lists the number of clashes within the asymmetric unit, whereas Symm-Clashes lists symmetry related clashes.

Mol	Chain	Non-H	H(model)	H(added)	Clashes	Symm-Clashes
1	A	2794	0	2787	14	0
1	B	2765	0	2756	7	0
1	C	2678	0	2599	4	0
1	D	2711	0	2693	7	0
2	A	30	0	0	0	0
2	B	30	0	0	0	0
2	C	30	0	0	0	0
2	D	30	0	0	0	0
3	A	82	0	0	0	0

*Continued on next page...*



*Continued from previous page...*

Mol	Chain	Non-H	H(model)	H(added)	Clashes	Symm-Clashes
3	B	52	0	0	0	0
3	C	47	0	0	0	0
3	D	63	0	0	0	0
All	All	11312	0	10835	30	0

The all-atom clashscore is defined as the number of clashes found per 1000 atoms (including hydrogen atoms). The all-atom clashscore for this structure is 1.

All (30) close contacts within the same asymmetric unit are listed below, sorted by their clash magnitude.

Atom-1	Atom-2	Interatomic distance (Å)	Clash overlap (Å)
1:D:294:LEU:HD22	1:D:306:VAL:HG11	1.65	0.76
1:A:175:LYS:HD2	1:A:240:MET:HE3	1.70	0.74
1:A:294:LEU:HD22	1:A:306:VAL:HG11	1.80	0.61
1:A:197:LEU:HD23	1:B:319:TYR:HD2	1.72	0.55
1:A:241:LEU:HB2	1:A:294:LEU:HD23	1.89	0.54
1:A:175:LYS:CD	1:A:240:MET:HE3	2.36	0.53
1:B:294:LEU:HD22	1:B:306:VAL:HG11	1.89	0.53
1:D:222:VAL:HB	1:D:306:VAL:HG12	1.94	0.49
1:A:249:LEU:HD22	1:A:357:GLY:HA2	1.95	0.48
1:B:192:ASN:HB2	1:B:233:HIS:CE1	2.49	0.48
1:A:175:LYS:HD2	1:A:240:MET:CE	2.41	0.47
1:A:294:LEU:HD13	1:A:306:VAL:HG21	1.97	0.47
1:C:381:PRO:HG2	1:C:384:ILE:HD12	1.97	0.47
1:C:192:ASN:HB2	1:C:233:HIS:CE1	2.51	0.46
1:A:314:LEU:O	1:D:315:GLY:HA2	2.15	0.46
1:A:361:PHE:CE1	1:A:373:ILE:HA	2.52	0.44
1:A:423:LEU:HA	1:A:426:ILE:HD12	1.98	0.44
1:A:477:SER:HA	1:A:480:LYS:HG2	1.99	0.44
1:C:222:VAL:HG11	1:C:306:VAL:HG23	1.99	0.44
1:A:184:TRP:HB3	1:A:240:MET:SD	2.58	0.43
1:A:461:ASP:OD1	1:A:463:ASP:N	2.50	0.43
1:B:385:LEU:HD23	1:B:403:TRP:CG	2.53	0.43
1:B:289:LYS:HB2	1:B:290:PRO:HD2	2.00	0.42
1:D:257:VAL:HG23	1:D:262:THR:HG23	2.00	0.42
1:B:376:VAL:HA	1:B:421:ARG:O	2.20	0.42
1:C:272:ALA:HB1	1:C:305:ILE:HD12	2.02	0.41
1:B:396:GLU:N	1:B:404:ASN:O	2.52	0.41
1:D:326:PHE:HB2	1:D:327:TYR:CE1	2.56	0.41
1:D:272:ALA:HB1	1:D:305:ILE:HD12	2.02	0.40
1:D:281:LEU:O	1:D:313:GLN:NE2	2.53	0.40

There are no symmetry-related clashes.

### 5.3 Torsion angles [i](#)

#### 5.3.1 Protein backbone [i](#)

In the following table, the Percentiles column shows the percent Ramachandran outliers of the chain as a percentile score with respect to all X-ray entries followed by that with respect to entries of similar resolution.

The Analysed column shows the number of residues for which the backbone conformation was analysed, and the total number of residues.

Mol	Chain	Analysed	Favoured	Allowed	Outliers	Percentiles	
1	A	337/368 (92%)	319 (95%)	18 (5%)	0	100	100
1	B	335/368 (91%)	315 (94%)	20 (6%)	0	100	100
1	C	326/368 (89%)	300 (92%)	26 (8%)	0	100	100
1	D	326/368 (89%)	304 (93%)	22 (7%)	0	100	100
All	All	1324/1472 (90%)	1238 (94%)	86 (6%)	0	100	100

There are no Ramachandran outliers to report.

#### 5.3.2 Protein sidechains [i](#)

In the following table, the Percentiles column shows the percent sidechain outliers of the chain as a percentile score with respect to all X-ray entries followed by that with respect to entries of similar resolution.

The Analysed column shows the number of residues for which the sidechain conformation was analysed, and the total number of residues.

Mol	Chain	Analysed	Rotameric	Outliers	Percentiles	
1	A	301/324 (93%)	299 (99%)	2 (1%)	84	92
1	B	297/324 (92%)	295 (99%)	2 (1%)	84	92
1	C	282/324 (87%)	282 (100%)	0	100	100
1	D	292/324 (90%)	290 (99%)	2 (1%)	84	92
All	All	1172/1296 (90%)	1166 (100%)	6 (0%)	88	95

All (6) residues with a non-rotameric sidechain are listed below:

Mol	Chain	Res	Type
1	A	320	GLN
1	A	324	SER
1	B	296	CYS
1	B	319	TYR
1	D	157	ASP
1	D	400	ASP

Some sidechains can be flipped to improve hydrogen bonding and reduce clashes. There are no such sidechains identified.

### 5.3.3 RNA [i](#)

There are no RNA molecules in this entry.

## 5.4 Non-standard residues in protein, DNA, RNA chains [i](#)

4 non-standard protein/DNA/RNA residues are modelled in this entry.

In the following table, the Counts columns list the number of bonds (or angles) for which Mogul statistics could be retrieved, the number of bonds (or angles) that are observed in the model and the number of bonds (or angles) that are defined in the Chemical Component Dictionary. The Link column lists molecule types, if any, to which the group is linked. The Z score for a bond length (or angle) is the number of standard deviations the observed value is removed from the expected value. A bond length (or angle) with  $|Z| > 2$  is considered an outlier worth inspection. RMSZ is the root-mean-square of all Z scores of the bond lengths (or angles).

Mol	Type	Chain	Res	Link	Bond lengths			Bond angles		
					Counts	RMSZ	# Z  > 2	Counts	RMSZ	# Z  > 2
1	PTR	C	321	1	15,16,17	0.84	0	19,22,24	0.91	1 (5%)
1	PTR	A	321	1	15,16,17	0.79	0	19,22,24	0.79	0
1	PTR	D	321	1	15,16,17	0.71	0	19,22,24	0.74	0
1	PTR	B	321	1	15,16,17	0.78	0	19,22,24	0.77	0

In the following table, the Chirals column lists the number of chiral outliers, the number of chiral centers analysed, the number of these observed in the model and the number defined in the Chemical Component Dictionary. Similar counts are reported in the Torsion and Rings columns. '-' means no outliers of that kind were identified.

Mol	Type	Chain	Res	Link	Chirals	Torsions	Rings
1	PTR	C	321	1	-	1/10/11/13	0/1/1/1
1	PTR	A	321	1	-	0/10/11/13	0/1/1/1
1	PTR	D	321	1	-	3/10/11/13	0/1/1/1

*Continued on next page...*

Continued from previous page...

Mol	Type	Chain	Res	Link	Chirals	Torsions	Rings
1	PTR	B	321	1	-	0/10/11/13	0/1/1/1

There are no bond length outliers.

All (1) bond angle outliers are listed below:

Mol	Chain	Res	Type	Atoms	Z	Observed( $^{\circ}$ )	Ideal( $^{\circ}$ )
1	C	321	PTR	O3P-P-O2P	2.06	115.52	107.64

There are no chirality outliers.

All (4) torsion outliers are listed below:

Mol	Chain	Res	Type	Atoms
1	C	321	PTR	O-C-CA-CB
1	D	321	PTR	O-C-CA-CB
1	D	321	PTR	C-CA-CB-CG
1	D	321	PTR	CZ-OH-P-O2P

There are no ring outliers.

No monomer is involved in short contacts.

## 5.5 Carbohydrates [i](#)

There are no carbohydrates in this entry.

## 5.6 Ligand geometry [i](#)

4 ligands are modelled in this entry.

In the following table, the Counts columns list the number of bonds (or angles) for which Mogul statistics could be retrieved, the number of bonds (or angles) that are observed in the model and the number of bonds (or angles) that are defined in the Chemical Component Dictionary. The Link column lists molecule types, if any, to which the group is linked. The Z score for a bond length (or angle) is the number of standard deviations the observed value is removed from the expected value. A bond length (or angle) with  $|Z| > 2$  is considered an outlier worth inspection. RMSZ is the root-mean-square of all Z scores of the bond lengths (or angles).

Mol	Type	Chain	Res	Link	Bond lengths			Bond angles		
					Counts	RMSZ	# Z  > 2	Counts	RMSZ	# Z  > 2
2	B6Z	C	501	-	28,33,33	1.77	3 (10%)	36,46,46	1.60	5 (13%)
2	B6Z	A	501	-	28,33,33	1.78	2 (7%)	36,46,46	1.73	7 (19%)

Mol	Type	Chain	Res	Link	Bond lengths			Bond angles		
					Counts	RMSZ	# Z  > 2	Counts	RMSZ	# Z  > 2
2	B6Z	D	501	-	28,33,33	1.77	4 (14%)	36,46,46	1.53	7 (19%)
2	B6Z	B	501	-	28,33,33	1.75	4 (14%)	36,46,46	1.64	7 (19%)

In the following table, the Chirals column lists the number of chiral outliers, the number of chiral centers analysed, the number of these observed in the model and the number defined in the Chemical Component Dictionary. Similar counts are reported in the Torsion and Rings columns. '-' means no outliers of that kind were identified.

Mol	Type	Chain	Res	Link	Chirals	Torsions	Rings
2	B6Z	C	501	-	-	4/12/28/28	0/4/4/4
2	B6Z	A	501	-	-	8/12/28/28	0/4/4/4
2	B6Z	D	501	-	-	4/12/28/28	0/4/4/4
2	B6Z	B	501	-	-	4/12/28/28	0/4/4/4

All (13) bond length outliers are listed below:

Mol	Chain	Res	Type	Atoms	Z	Observed(Å)	Ideal(Å)
2	A	501	B6Z	CBB-CAU	-6.14	1.35	1.50
2	B	501	B6Z	CBB-CAU	-5.99	1.35	1.50
2	D	501	B6Z	CBB-CAU	-5.91	1.36	1.50
2	C	501	B6Z	CBB-CAU	-5.83	1.36	1.50
2	A	501	B6Z	CAW-CAU	-5.36	1.40	1.49
2	D	501	B6Z	CAW-CAU	-5.28	1.40	1.49
2	C	501	B6Z	CAW-CAU	-5.15	1.40	1.49
2	B	501	B6Z	CAW-CAU	-5.02	1.40	1.49
2	B	501	B6Z	CAP-NBD	2.65	1.50	1.46
2	C	501	B6Z	CAO-NBD	2.39	1.50	1.46
2	B	501	B6Z	CAO-NBD	2.26	1.50	1.46
2	D	501	B6Z	CAP-NBD	2.06	1.50	1.46
2	D	501	B6Z	CAO-NBD	2.05	1.49	1.46

All (26) bond angle outliers are listed below:

Mol	Chain	Res	Type	Atoms	Z	Observed(°)	Ideal(°)
2	A	501	B6Z	CAN-NBC-CAM	5.75	117.56	109.52
2	C	501	B6Z	CAN-NBC-CAM	5.41	117.09	109.52
2	B	501	B6Z	CAP-NBD-CAO	5.18	122.94	111.52
2	D	501	B6Z	CAN-NBC-CAM	4.87	116.33	109.52
2	C	501	B6Z	NAC-CAV-NAQ	-4.46	117.41	123.19
2	A	501	B6Z	NAC-CAV-NAQ	-3.95	118.07	123.19
2	B	501	B6Z	NAC-CAV-NAQ	-3.69	118.41	123.19

Continued on next page...

*Continued from previous page...*

Mol	Chain	Res	Type	Atoms	Z	Observed(°)	Ideal(°)
2	D	501	B6Z	NAC-CAV-NAQ	-3.66	118.45	123.19
2	A	501	B6Z	CAO-CAM-NBC	-3.31	107.06	110.80
2	A	501	B6Z	CAM-CAO-NBD	-3.26	104.36	110.70
2	B	501	B6Z	CAY-NAR-CBA	-3.07	121.70	129.60
2	B	501	B6Z	CAA-OAS-CAZ	-2.87	113.20	117.53
2	B	501	B6Z	CAN-CAP-NBD	2.75	116.05	110.70
2	D	501	B6Z	CAY-NAR-CBA	-2.69	122.68	129.60
2	A	501	B6Z	CAP-NBD-CAO	2.64	117.34	111.52
2	D	501	B6Z	CAP-NBD-CAO	2.58	117.21	111.52
2	B	501	B6Z	OAS-CAZ-CAY	2.58	117.96	114.80
2	C	501	B6Z	CAP-NBD-CAO	2.56	117.16	111.52
2	C	501	B6Z	CAY-NAR-CBA	-2.53	123.10	129.60
2	D	501	B6Z	OAS-CAZ-CAY	2.40	117.74	114.80
2	A	501	B6Z	CAL-CAX-NBD	-2.22	118.95	121.33
2	A	501	B6Z	CAY-NAR-CBA	-2.19	123.96	129.60
2	D	501	B6Z	CAO-CAM-NBC	-2.10	108.44	110.80
2	D	501	B6Z	CAM-CAO-NBD	-2.03	106.76	110.70
2	C	501	B6Z	CAK-CAY-NAR	2.02	125.54	121.39
2	B	501	B6Z	CAB-NBC-CAN	-2.01	107.66	110.66

There are no chirality outliers.

All (20) torsion outliers are listed below:

Mol	Chain	Res	Type	Atoms
2	B	501	B6Z	CAY-CAZ-OAS-CAA
2	C	501	B6Z	CAY-CAZ-OAS-CAA
2	A	501	B6Z	CAY-CAZ-OAS-CAA
2	D	501	B6Z	CAY-CAZ-OAS-CAA
2	C	501	B6Z	CAL-CAZ-OAS-CAA
2	B	501	B6Z	CAL-CAZ-OAS-CAA
2	A	501	B6Z	CAL-CAZ-OAS-CAA
2	D	501	B6Z	CAL-CAZ-OAS-CAA
2	A	501	B6Z	CAL-CAX-NBD-CAP
2	D	501	B6Z	OAD-CAU-CAW-CAI
2	A	501	B6Z	CAJ-CAX-NBD-CAO
2	D	501	B6Z	OAD-CAU-CAW-CAH
2	A	501	B6Z	CAJ-CAX-NBD-CAP
2	A	501	B6Z	OAD-CAU-CAW-CAI
2	A	501	B6Z	OAD-CAU-CAW-CAH
2	C	501	B6Z	OAD-CAU-CAW-CAI
2	A	501	B6Z	CAL-CAX-NBD-CAO
2	B	501	B6Z	OAD-CAU-CAW-CAI

*Continued on next page...*

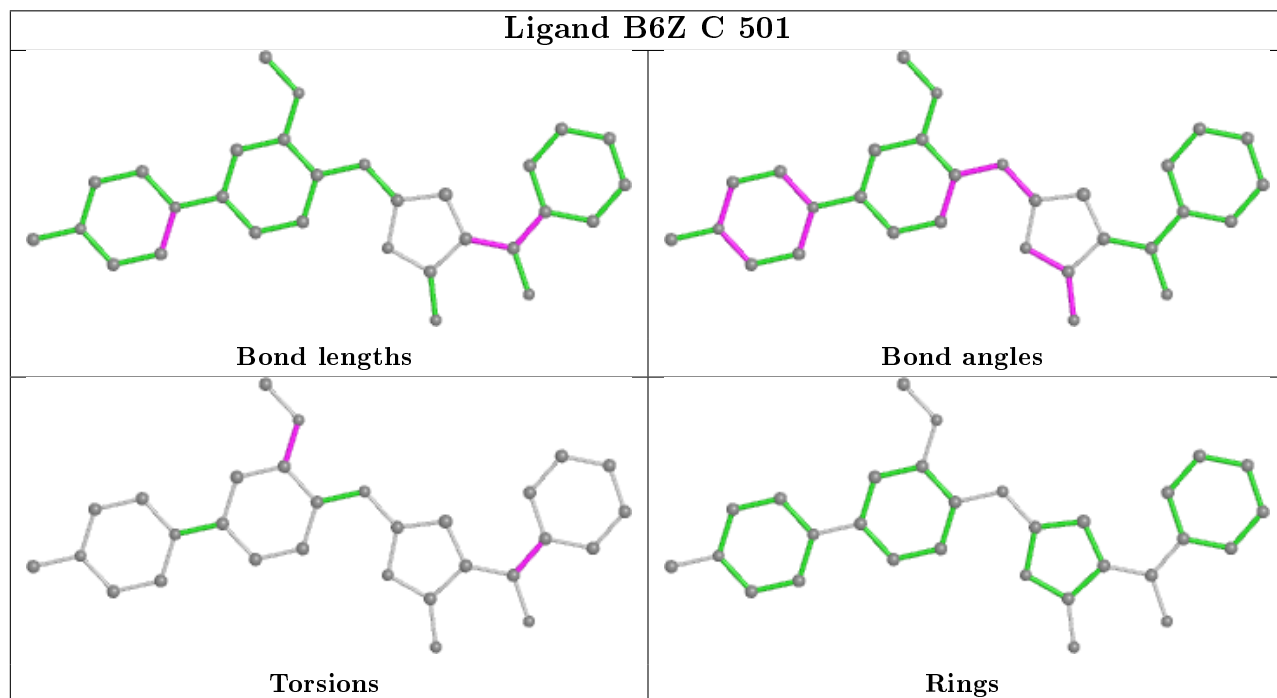
*Continued from previous page...*

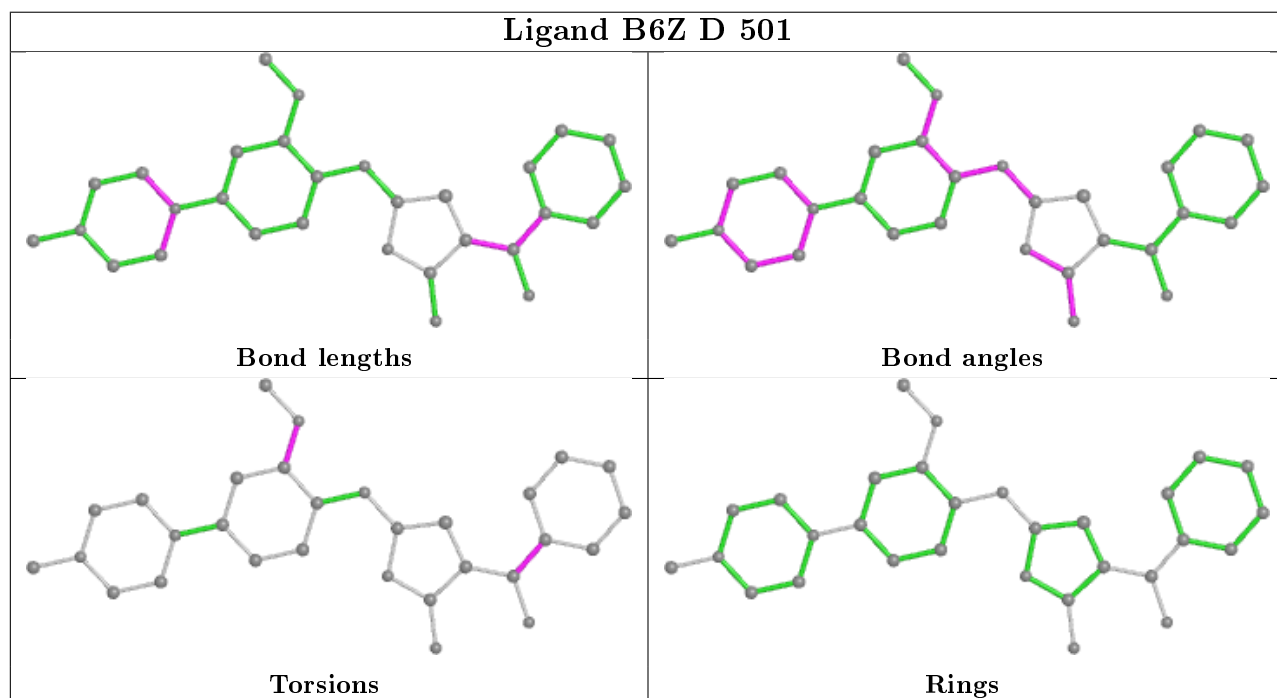
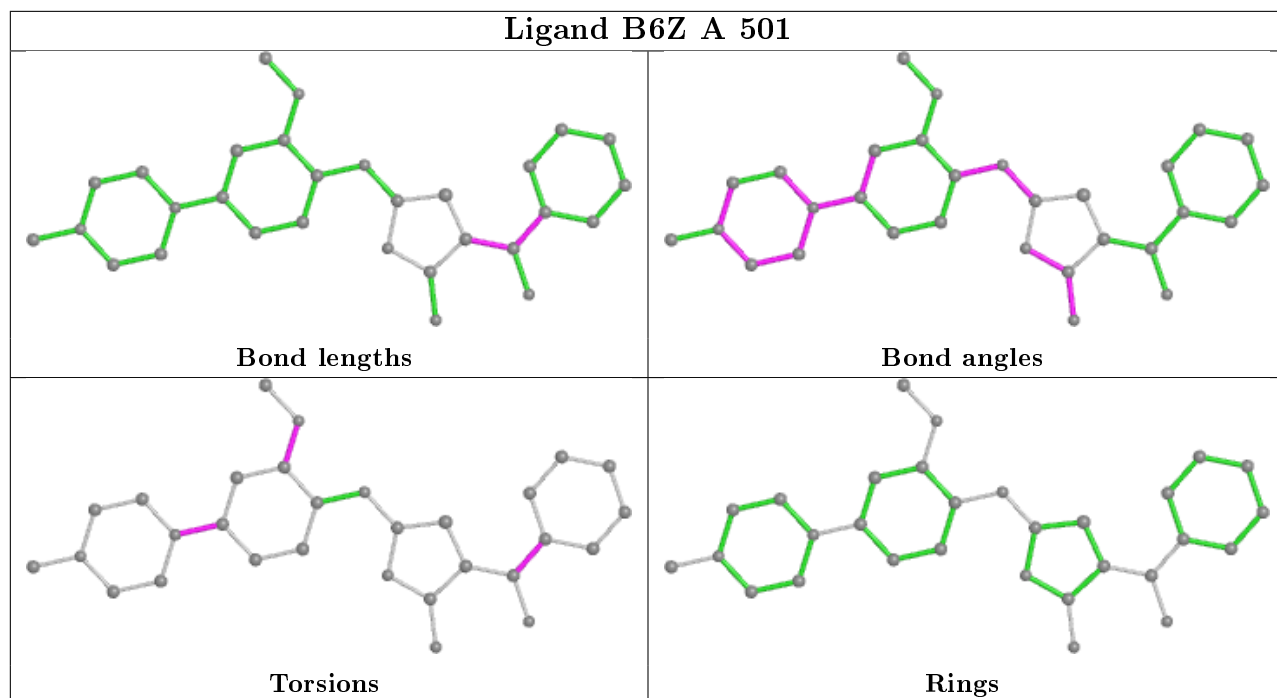
Mol	Chain	Res	Type	Atoms
2	B	501	B6Z	OAD-CAU-CAW-CAH
2	C	501	B6Z	OAD-CAU-CAW-CAH

There are no ring outliers.

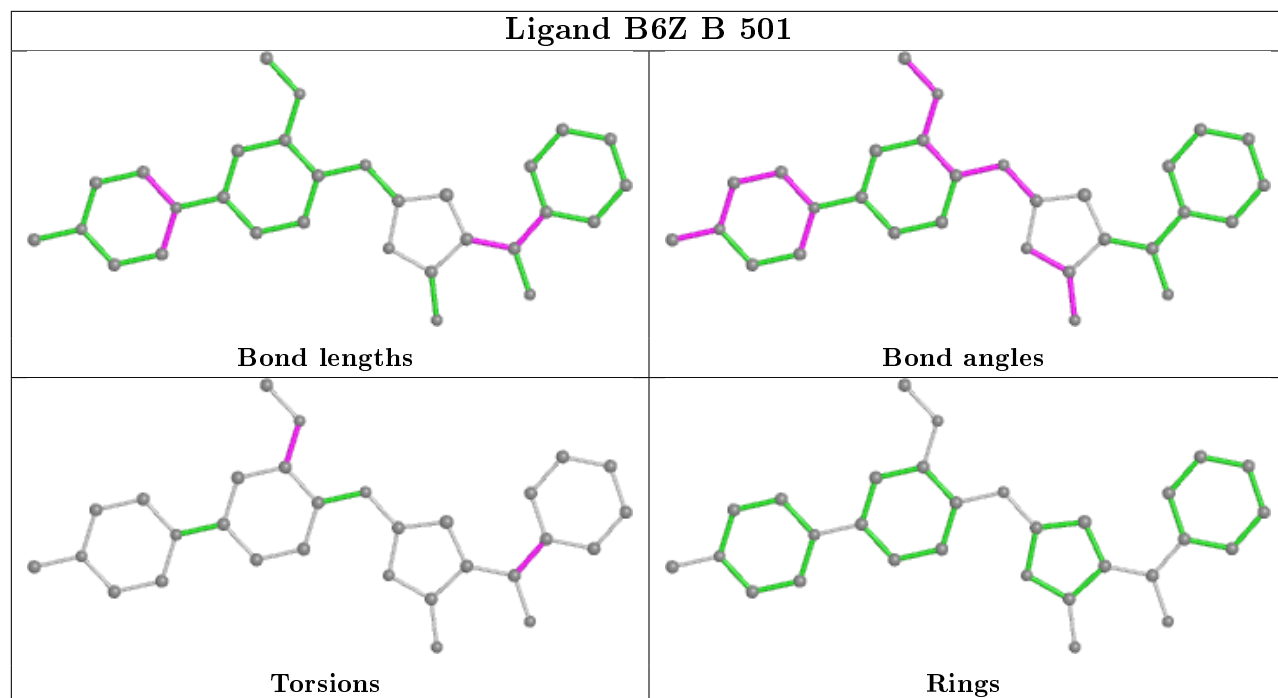
No monomer is involved in short contacts.

The following is a two-dimensional graphical depiction of Mogul quality analysis of bond lengths, bond angles, torsion angles, and ring geometry for all instances of the Ligand of Interest. In addition, ligands with molecular weight > 250 and outliers as shown on the validation Tables will also be included. For torsion angles, if less than 5% of the Mogul distribution of torsion angles is within 10 degrees of the torsion angle in question, then that torsion angle is considered an outlier. Any bond that is central to one or more torsion angles identified as an outlier by Mogul will be highlighted in the graph. For rings, the root-mean-square deviation (RMSD) between the ring in question and similar rings identified by Mogul is calculated over all ring torsion angles. If the average RMSD is greater than 60 degrees and the minimal RMSD between the ring in question and any Mogul-identified rings is also greater than 60 degrees, then that ring is considered an outlier. The outliers are highlighted in purple. The color gray indicates Mogul did not find sufficient equivalents in the CSD to analyse the geometry.









## 5.7 Other polymers [i](#)

There are no such residues in this entry.

## 5.8 Polymer linkage issues [i](#)

There are no chain breaks in this entry.

## 6 Fit of model and data

### 6.1 Protein, DNA and RNA chains

In the following table, the column labelled ‘#RSRZ> 2’ contains the number (and percentage) of RSRZ outliers, followed by percent RSRZ outliers for the chain as percentile scores relative to all X-ray entries and entries of similar resolution. The OWAB column contains the minimum, median, 95<sup>th</sup> percentile and maximum values of the occupancy-weighted average B-factor per residue. The column labelled ‘Q< 0.9’ lists the number of (and percentage) of residues with an average occupancy less than 0.9.

Mol	Chain	Analysed	<RSRZ>	#RSRZ>2	OWAB(Å <sup>2</sup> )	Q<0.9
1	A	341/368 (92%)	0.20	5 (1%) 73 79	28, 44, 61, 80	0
1	B	339/368 (92%)	0.59	22 (6%) 18 24	38, 61, 86, 121	0
1	C	332/368 (90%)	0.54	20 (6%) 21 28	35, 62, 86, 96	0
1	D	332/368 (90%)	0.43	12 (3%) 42 49	34, 54, 81, 96	0
All	All	1344/1472 (91%)	0.44	59 (4%) 34 41	28, 55, 84, 121	0

All (59) RSRZ outliers are listed below:

Mol	Chain	Res	Type	RSRZ
1	B	398	LEU	7.2
1	D	443	GLY	7.1
1	C	450	LEU	4.0
1	C	420	THR	4.0
1	C	435	GLY	3.9
1	D	429	VAL	3.9
1	B	399	PRO	3.9
1	B	460	LEU	3.6
1	B	384	ILE	3.4
1	C	219	TYR	3.4
1	D	149	VAL	3.4
1	C	404	ASN	3.3
1	B	376	VAL	3.3
1	C	446	VAL	3.3
1	A	216	GLU	3.0
1	D	214	ASP	3.0
1	A	354	MET	3.0
1	B	241	LEU	3.0
1	B	219	TYR	3.0
1	C	288	LEU	2.9
1	B	392	ARG	2.8

*Continued on next page...*

*Continued from previous page...*

<b>Mol</b>	<b>Chain</b>	<b>Res</b>	<b>Type</b>	<b>RSRZ</b>
1	D	243	TYR	2.8
1	B	245	LEU	2.7
1	B	299	LYS	2.7
1	D	219	TYR	2.7
1	C	257	VAL	2.7
1	C	312	CYS	2.6
1	B	354	MET	2.6
1	D	432	GLY	2.6
1	B	472	TYR	2.5
1	B	405	LEU	2.5
1	C	475	GLN	2.4
1	C	379	ILE	2.4
1	D	360	LEU	2.4
1	A	154	LYS	2.4
1	C	260	ASN	2.4
1	C	471	TYR	2.3
1	B	401	GLY	2.3
1	C	429	VAL	2.2
1	A	245	LEU	2.2
1	D	446	VAL	2.2
1	D	184	TRP	2.2
1	B	184	TRP	2.2
1	D	354	MET	2.2
1	A	179	ARG	2.1
1	B	213	HIS	2.1
1	D	161	ILE	2.1
1	C	259	LEU	2.1
1	B	394	PHE	2.1
1	C	447	ALA	2.1
1	C	459	MET	2.1
1	B	133	ARG	2.1
1	C	355	HIS	2.1
1	C	391	ALA	2.1
1	B	449	TYR	2.1
1	C	395	PHE	2.1
1	B	221	ILE	2.1
1	B	220	TYR	2.1
1	B	404	ASN	2.0

## 6.2 Non-standard residues in protein, DNA, RNA chains [i](#)

In the following table, the Atoms column lists the number of modelled atoms in the group and the number defined in the chemical component dictionary. The B-factors column lists the minimum, median, 95<sup>th</sup> percentile and maximum values of B factors of atoms in the group. The column labelled 'Q< 0.9' lists the number of atoms with occupancy less than 0.9.

Mol	Type	Chain	Res	Atoms	RSCC	RSR	B-factors(Å <sup>2</sup> )	Q<0.9
1	PTR	C	321	16/17	0.90	0.15	54,59,60,60	0
1	PTR	B	321	16/17	0.92	0.14	56,60,60,61	0
1	PTR	D	321	16/17	0.97	0.14	37,42,46,46	0
1	PTR	A	321	16/17	0.97	0.12	37,39,40,40	0

## 6.3 Carbohydrates [i](#)

There are no carbohydrates in this entry.

## 6.4 Ligands [i](#)

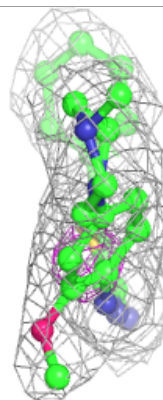
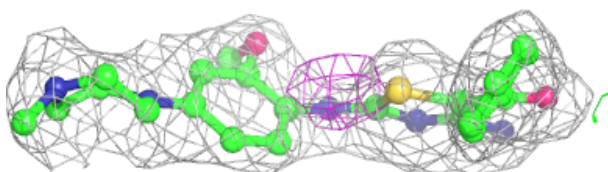
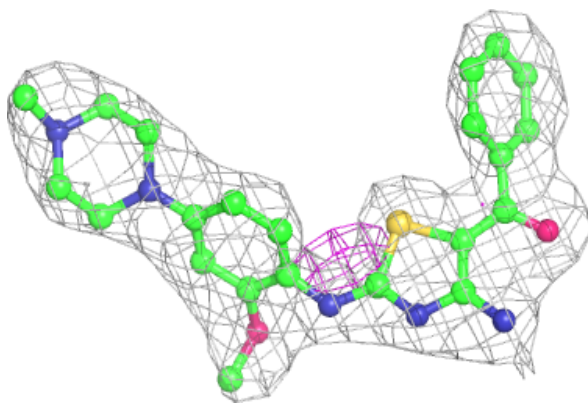
In the following table, the Atoms column lists the number of modelled atoms in the group and the number defined in the chemical component dictionary. The B-factors column lists the minimum, median, 95<sup>th</sup> percentile and maximum values of B factors of atoms in the group. The column labelled 'Q< 0.9' lists the number of atoms with occupancy less than 0.9.

Mol	Type	Chain	Res	Atoms	RSCC	RSR	B-factors(Å <sup>2</sup> )	Q<0.9
2	B6Z	C	501	30/30	0.89	0.16	46,49,51,54	0
2	B6Z	D	501	30/30	0.89	0.16	45,49,57,57	0
2	B6Z	B	501	30/30	0.92	0.13	37,49,54,55	0
2	B6Z	A	501	30/30	0.93	0.16	46,48,51,51	0

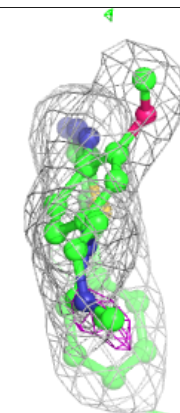
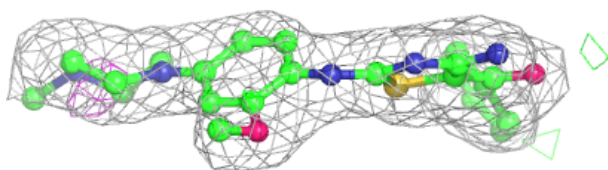
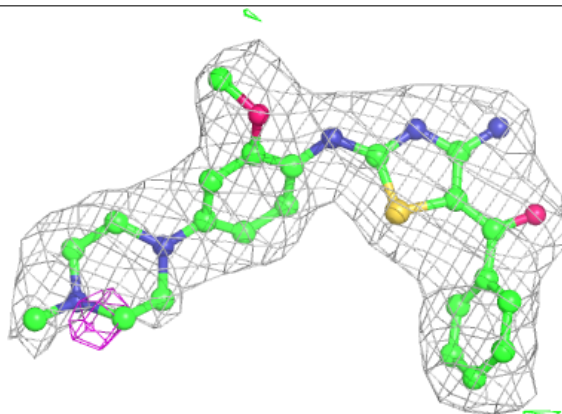
The following is a graphical depiction of the model fit to experimental electron density of all instances of the Ligand of Interest. In addition, ligands with molecular weight > 250 and outliers as shown on the geometry validation Tables will also be included. Each fit is shown from different orientation to approximate a three-dimensional view.

**Electron density around B6Z C 501:**

$2mF_o-DF_c$  (at 0.7 rmsd) in gray  
 $mF_o-DF_c$  (at 3 rmsd) in purple (negative)  
and green (positive)

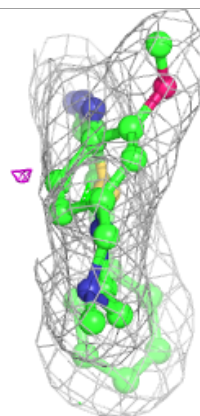
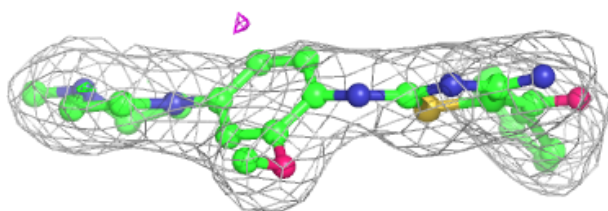
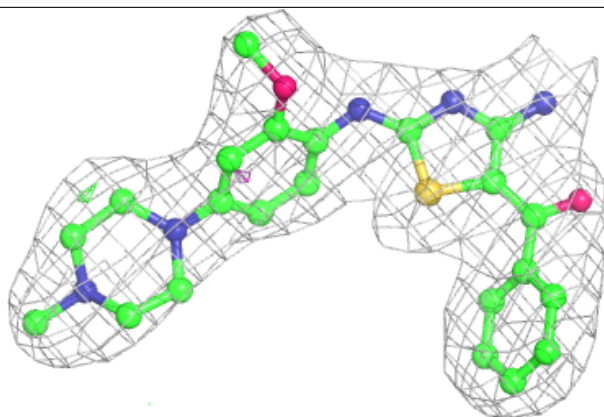
**Electron density around B6Z D 501:**

$2mF_o-DF_c$  (at 0.7 rmsd) in gray  
 $mF_o-DF_c$  (at 3 rmsd) in purple (negative)  
and green (positive)

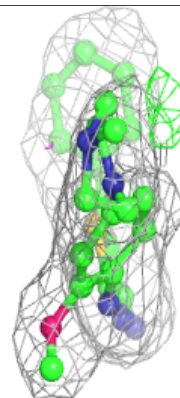
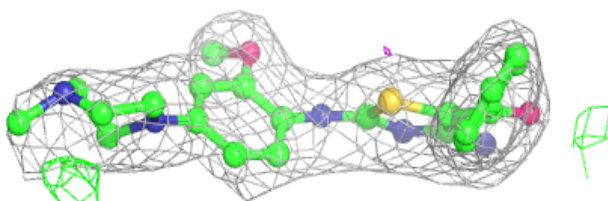
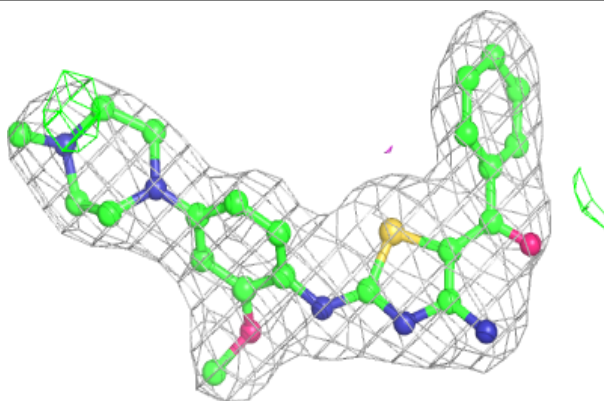


**Electron density around B6Z B 501:**

$2mF_o-DF_c$  (at 0.7 rmsd) in gray  
 $mF_o-DF_c$  (at 3 rmsd) in purple (negative)  
and green (positive)

**Electron density around B6Z A 501:**

$2mF_o-DF_c$  (at 0.7 rmsd) in gray  
 $mF_o-DF_c$  (at 3 rmsd) in purple (negative)  
and green (positive)



## 6.5 Other polymers

There are no such residues in this entry.