



Full wwPDB X-ray Structure Validation Report ⓘ

Oct 7, 2023 – 01:41 PM EDT

PDB ID : 6DEB
Title : Crystal Structure of Bifunctional Enzyme F₀F₁-Methylenetetrahydrofolate Dehydrogenase/Cyclohydrolase in the Complex with Methotrexate from *Campylobacter jejuni*
Authors : Kim, Y.; Makowska-Grzyska, M.; Maltseva, N.; Grimshaw, S.; Joachimiak, A.; Center for Structural Genomics of Infectious Diseases (CSGID)
Deposited on : 2018-05-11
Resolution : 1.70 Å (reported)

This is a Full wwPDB X-ray Structure Validation Report for a publicly released PDB entry.

We welcome your comments at validation@mail.wwpdb.org

A user guide is available at

<https://www.wwpdb.org/validation/2017/XrayValidationReportHelp>

with specific help available everywhere you see the ⓘ symbol.

The types of validation reports are described at

<http://www.wwpdb.org/validation/2017/FAQs#types>.

The following versions of software and data (see [references](#) ①) were used in the production of this report:

MolProbity : 4.02b-467
Mogul : 1.8.5 (274361), CSD as541be (2020)
Xtrriage (Phenix) : 1.13
EDS : 2.35.1
buster-report : 1.1.7 (2018)
Percentile statistics : 20191225.v01 (using entries in the PDB archive December 25th 2019)
Refmac : 5.8.0158
CCP4 : 7.0.044 (Gargrove)
Ideal geometry (proteins) : Engh & Huber (2001)
Ideal geometry (DNA, RNA) : Parkinson et al. (1996)
Validation Pipeline (wwPDB-VP) : 2.35.1

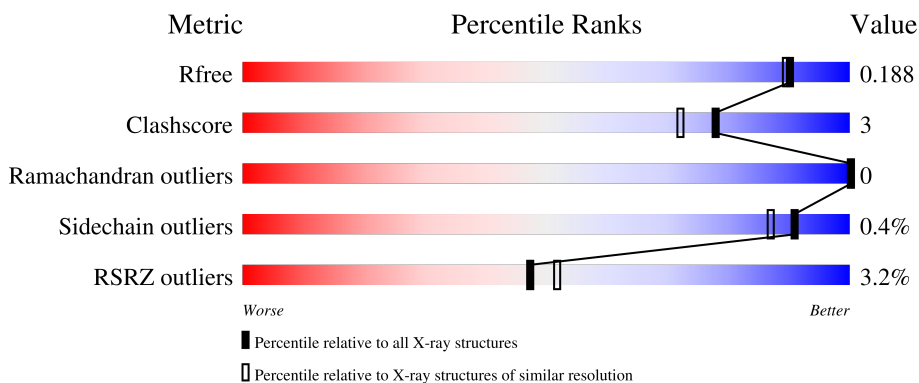
1 Overall quality at a glance

The following experimental techniques were used to determine the structure:

X-RAY DIFFRACTION

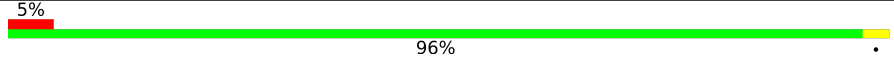
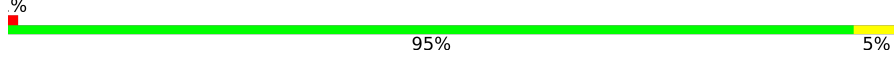
The reported resolution of this entry is 1.70 Å.

Percentile scores (ranging between 0-100) for global validation metrics of the entry are shown in the following graphic. The table shows the number of entries on which the scores are based.



Metric	Whole archive (#Entries)	Similar resolution (#Entries, resolution range(Å))
R_{free}	130704	4298 (1.70-1.70)
Clashscore	141614	4695 (1.70-1.70)
Ramachandran outliers	138981	4610 (1.70-1.70)
Sidechain outliers	138945	4610 (1.70-1.70)
RSRZ outliers	127900	4222 (1.70-1.70)

The table below summarises the geometric issues observed across the polymeric chains and their fit to the electron density. The red, orange, yellow and green segments of the lower bar indicate the fraction of residues that contain outliers for ≥ 3 , 2, 1 and 0 types of geometric quality criteria respectively. A grey segment represents the fraction of residues that are not modelled. The numeric value for each fraction is indicated below the corresponding segment, with a dot representing fractions $\leq 5\%$. The upper red bar (where present) indicates the fraction of residues that have poor fit to the electron density. The numeric value is given above the bar.

Mol	Chain	Length	Quality of chain
1	A	285	
1	B	285	

2 Entry composition [i](#)

There are 9 unique types of molecules in this entry. The entry contains 5076 atoms, of which 0 are hydrogens and 0 are deuteriums.

In the tables below, the ZeroOcc column contains the number of atoms modelled with zero occupancy, the AltConf column contains the number of residues with at least one atom in alternate conformation and the Trace column contains the number of residues modelled with at most 2 atoms.

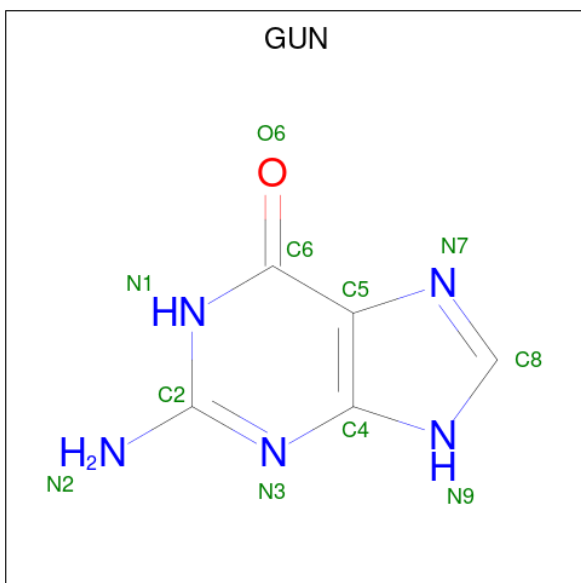
- Molecule 1 is a protein called Bifunctional protein Fold.

Mol	Chain	Residues	Atoms					ZeroOcc	AltConf	Trace
			Total	C	N	O	S			
1	A	284	2221	1402	371	434	14	0	12	0
1	B	284	2231	1408	373	436	14	0	13	0

There are 6 discrepancies between the modelled and reference sequences:

Chain	Residue	Modelled	Actual	Comment	Reference
A	-2	SER	-	expression tag	UNP Q0PA35
A	-1	ASN	-	expression tag	UNP Q0PA35
A	0	ALA	-	expression tag	UNP Q0PA35
B	-2	SER	-	expression tag	UNP Q0PA35
B	-1	ASN	-	expression tag	UNP Q0PA35
B	0	ALA	-	expression tag	UNP Q0PA35

- Molecule 2 is GUANINE (three-letter code: GUN) (formula: C₅H₅N₅O).

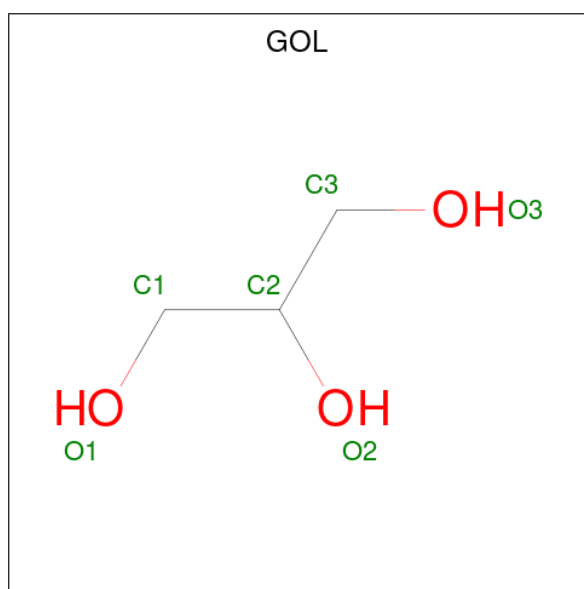


Mol	Chain	Residues	Atoms				ZeroOcc	AltConf
2	A	1	Total	C	N	O	0	0
			11	5	5	1		

- Molecule 3 is POTASSIUM ION (three-letter code: K) (formula: K).

Mol	Chain	Residues	Atoms		ZeroOcc	AltConf
3	A	1	Total	K	0	0
			1	1		

- Molecule 4 is GLYCEROL (three-letter code: GOL) (formula: C₃H₈O₃).

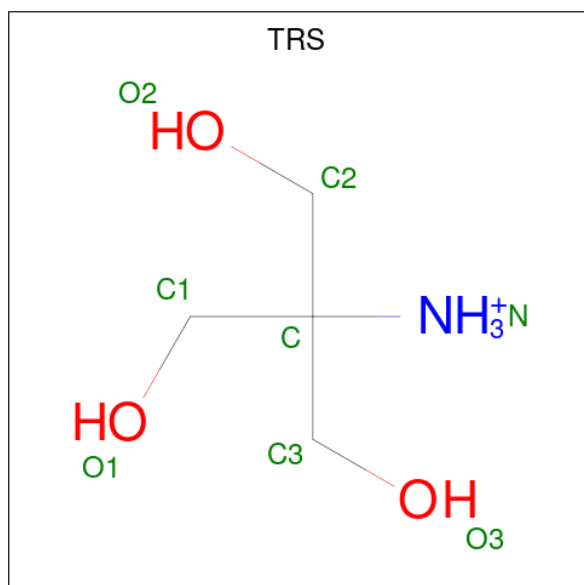


Mol	Chain	Residues	Atoms			ZeroOcc	AltConf
4	A	1	Total	C	O	0	0
			6	3	3		
4	A	1	Total	C	O	0	0
			6	3	3		
4	A	1	Total	C	O	0	0
			6	3	3		
4	B	1	Total	C	O	0	0
			6	3	3		
4	B	1	Total	C	O	0	0
			6	3	3		

- Molecule 5 is CHLORIDE ION (three-letter code: CL) (formula: Cl).

Mol	Chain	Residues	Atoms	ZeroOcc	AltConf
5	A	1	Total Cl 1 1	0	0
5	B	2	Total Cl 2 2	0	0

- Molecule 6 is 2-AMINO-2-HYDROXYMETHYL-PROPANE-1,3-DIOL (three-letter code: TRS) (formula: C₄H₁₂NO₃).



Mol	Chain	Residues	Atoms	ZeroOcc	AltConf
6	B	1	Total C N O 8 4 1 3	0	0

- Molecule 7 is METHOTREXATE (three-letter code: MTX) (formula: C₂₀H₂₂N₈O₅).

- Molecule 9 is water.

Mol	Chain	Residues	Atoms		ZeroOcc	AltConf
9	A	235	Total 235	O 235	0	0
9	B	262	Total 262	O 262	0	0

3 Residue-property plots [i](#)

These plots are drawn for all protein, RNA, DNA and oligosaccharide chains in the entry. The first graphic for a chain summarises the proportions of the various outlier classes displayed in the second graphic. The second graphic shows the sequence view annotated by issues in geometry and electron density. Residues are color-coded according to the number of geometric quality criteria for which they contain at least one outlier: green = 0, yellow = 1, orange = 2 and red = 3 or more. A red dot above a residue indicates a poor fit to the electron density ($RSRZ > 2$). Stretches of 2 or more consecutive residues without any outlier are shown as a green connector. Residues present in the sample, but not in the model, are shown in grey.

- Molecule 1: Bifunctional protein Fold



- Molecule 1: Bifunctional protein Fold



4 Data and refinement statistics

Property	Value	Source
Space group	C 1 2 1	Depositor
Cell constants a, b, c, α , β , γ	163.87Å 59.09Å 72.99Å 90.00° 100.08° 90.00°	Depositor
Resolution (Å)	38.14 – 1.70 38.14 – 1.70	Depositor EDS
% Data completeness (in resolution range)	95.2 (38.14-1.70) 95.2 (38.14-1.70)	Depositor EDS
R_{merge}	0.05	Depositor
R_{sym}	(Not available)	Depositor
$\langle I/\sigma(I) \rangle$ ¹	3.97 (at 1.70Å)	Xtrriage
Refinement program	PHENIX 1.8.1_1161	Depositor
R, R_{free}	0.161 , 0.188 0.162 , 0.188	Depositor DCC
R_{free} test set	3640 reflections (5.04%)	wwPDB-VP
Wilson B-factor (Å ²)	20.0	Xtrriage
Anisotropy	0.341	Xtrriage
Bulk solvent k_{sol} (e/Å ³), B_{sol} (Å ²)	0.37 , 48.0	EDS
L-test for twinning ²	$\langle L \rangle = 0.49$, $\langle L^2 \rangle = 0.32$	Xtrriage
Estimated twinning fraction	No twinning to report.	Xtrriage
F_o, F_c correlation	0.96	EDS
Total number of atoms	5076	wwPDB-VP
Average B, all atoms (Å ²)	24.0	wwPDB-VP

Xtrriage's analysis on translational NCS is as follows: *The largest off-origin peak in the Patterson function is 7.62% of the height of the origin peak. No significant pseudotranslation is detected.*

¹Intensities estimated from amplitudes.

²Theoretical values of $\langle |L| \rangle$, $\langle L^2 \rangle$ for acentric reflections are 0.5, 0.333 respectively for untwinned datasets, and 0.375, 0.2 for perfectly twinned datasets.

5 Model quality

5.1 Standard geometry

Bond lengths and bond angles in the following residue types are not validated in this section: GOL, MTX, DTT, GUN, TRS, K, CL

The Z score for a bond length (or angle) is the number of standard deviations the observed value is removed from the expected value. A bond length (or angle) with $|Z| > 5$ is considered an outlier worth inspection. RMSZ is the root-mean-square of all Z scores of the bond lengths (or angles).

Mol	Chain	Bond lengths		Bond angles	
		RMSZ	# Z >5	RMSZ	# Z >5
1	A	0.43	0/2246	0.57	0/3035
1	B	0.45	0/2256	0.60	0/3049
All	All	0.44	0/4502	0.59	0/6084

There are no bond length outliers.

There are no bond angle outliers.

There are no chirality outliers.

There are no planarity outliers.

5.2 Too-close contacts

In the following table, the Non-H and H(model) columns list the number of non-hydrogen atoms and hydrogen atoms in the chain respectively. The H(added) column lists the number of hydrogen atoms added and optimized by MolProbity. The Clashes column lists the number of clashes within the asymmetric unit, whereas Symm-Clashes lists symmetry-related clashes.

Mol	Chain	Non-H	H(model)	H(added)	Clashes	Symm-Clashes
1	A	2221	0	2304	9	0
1	B	2231	0	2312	17	0
2	A	11	0	5	1	0
3	A	1	0	0	0	0
4	A	18	0	24	0	0
4	B	12	0	16	1	0
5	A	1	0	0	0	0
5	B	2	0	0	0	0
6	B	8	0	12	0	0
7	B	66	0	40	9	0
8	B	8	0	10	3	0

Continued on next page...

Continued from previous page...

Mol	Chain	Non-H	H(model)	H(added)	Clashes	Symm-Clashes
9	A	235	0	0	1	0
9	B	262	0	0	2	0
All	All	5076	0	4723	27	0

The all-atom clashscore is defined as the number of clashes found per 1000 atoms (including hydrogen atoms). The all-atom clashscore for this structure is 3.

All (27) close contacts within the same asymmetric unit are listed below, sorted by their clash magnitude.

Atom-1	Atom-2	Interatomic distance (Å)	Clash overlap (Å)
1:A:156[B]:GLU:HG3	1:B:190:LYS:HD3	1.62	0.81
1:A:178:LEU:O	8:B:306:DTT:H3	1.91	0.71
1:B:190:LYS:NZ	8:B:306:DTT:O2	2.26	0.58
1:A:156[B]:GLU:OE2	1:B:190:LYS:HE2	2.05	0.56
1:A:156[B]:GLU:CG	1:B:190:LYS:HD3	2.33	0.56
1:A:190:LYS:HD3	1:B:156:GLU:HG3	1.91	0.52
1:B:168[A]:ILE:HD11	7:B:302:MTX:HG2	1.92	0.51
1:B:168[B]:ILE:HG21	7:B:302:MTX:C11	2.40	0.50
7:B:302:MTX:H91	7:B:303:MTX:HG1	1.94	0.49
1:A:96:LEU:H	2:A:301:GUN:HN1	1.60	0.46
1:B:168[B]:ILE:HG21	7:B:302:MTX:C16	2.45	0.46
1:B:45:GLN:HG2	9:B:444:HOH:O	2.15	0.46
1:B:74:ASN:HD22	1:B:77:LEU:HD12	1.81	0.44
7:B:302:MTX:C16	7:B:303:MTX:H91	2.48	0.44
1:B:168[A]:ILE:CD1	7:B:302:MTX:HG2	2.47	0.44
1:B:47:TYR:CD2	7:B:303:MTX:HB1	2.53	0.44
1:B:215[B]:ARG:NH1	9:B:404:HOH:O	2.39	0.44
7:B:302:MTX:H15	7:B:302:MTX:HM1	1.75	0.43
1:B:21:ASN:HD22	1:B:21:ASN:HA	1.75	0.42
1:B:194:LEU:HB2	4:B:308:GOL:H2	2.01	0.42
1:A:135[B]:GLY:N	9:A:401:HOH:O	2.46	0.41
1:A:137:LEU:HD12	1:A:142:LEU:HD13	2.02	0.41
1:B:41:ASN:HA	1:B:42:PRO:HD3	1.95	0.41
1:B:74:ASN:HD22	1:B:74:ASN:HA	1.73	0.41
1:A:41:ASN:HA	1:A:42:PRO:HD3	1.97	0.41
7:B:303:MTX:H15	7:B:303:MTX:HM1	1.92	0.40
8:B:306:DTT:H42	8:B:306:DTT:H12	1.15	0.40

There are no symmetry-related clashes.

5.3 Torsion angles [i](#)

5.3.1 Protein backbone [i](#)

In the following table, the Percentiles column shows the percent Ramachandran outliers of the chain as a percentile score with respect to all X-ray entries followed by that with respect to entries of similar resolution.

The Analysed column shows the number of residues for which the backbone conformation was analysed, and the total number of residues.

Mol	Chain	Analysed	Favoured	Allowed	Outliers	Percentiles	
1	A	294/285 (103%)	289 (98%)	5 (2%)	0	100	100
1	B	295/285 (104%)	290 (98%)	5 (2%)	0	100	100
All	All	589/570 (103%)	579 (98%)	10 (2%)	0	100	100

There are no Ramachandran outliers to report.

5.3.2 Protein sidechains [i](#)

In the following table, the Percentiles column shows the percent sidechain outliers of the chain as a percentile score with respect to all X-ray entries followed by that with respect to entries of similar resolution.

The Analysed column shows the number of residues for which the sidechain conformation was analysed, and the total number of residues.

Mol	Chain	Analysed	Rotameric	Outliers	Percentiles	
1	A	253/244 (104%)	253 (100%)	0	100	100
1	B	254/244 (104%)	251 (99%)	3 (1%)	71	59
All	All	507/488 (104%)	504 (99%)	3 (1%)	91	80

All (3) residues with a non-rotameric sidechain are listed below:

Mol	Chain	Res	Type
1	B	-1	ASN
1	B	56[A]	GLU
1	B	56[B]	GLU

Sometimes sidechains can be flipped to improve hydrogen bonding and reduce clashes. All (5) such sidechains are listed below:

Mol	Chain	Res	Type
1	A	21	ASN
1	B	21	ASN
1	B	22	GLN
1	B	74	ASN
1	B	85	HIS

5.3.3 RNA [i](#)

There are no RNA molecules in this entry.

5.4 Non-standard residues in protein, DNA, RNA chains [i](#)

There are no non-standard protein/DNA/RNA residues in this entry.

5.5 Carbohydrates [i](#)

There are no monosaccharides in this entry.

5.6 Ligand geometry [i](#)

Of 14 ligands modelled in this entry, 4 are monoatomic - leaving 10 for Mogul analysis.

In the following table, the Counts columns list the number of bonds (or angles) for which Mogul statistics could be retrieved, the number of bonds (or angles) that are observed in the model and the number of bonds (or angles) that are defined in the Chemical Component Dictionary. The Link column lists molecule types, if any, to which the group is linked. The Z score for a bond length (or angle) is the number of standard deviations the observed value is removed from the expected value. A bond length (or angle) with $|Z| > 2$ is considered an outlier worth inspection. RMSZ is the root-mean-square of all Z scores of the bond lengths (or angles).

Mol	Type	Chain	Res	Link	Bond lengths			Bond angles		
					Counts	RMSZ	# Z > 2	Counts	RMSZ	# Z > 2
7	MTX	B	302	-	35,35,35	0.87	1 (2%)	46,49,49	1.76	11 (23%)
2	GUN	A	301	-	7,12,12	1.29	0	8,17,17	1.60	2 (25%)
8	DTT	B	306	-	7,7,7	0.79	0	4,8,8	1.59	1 (25%)
4	GOL	A	305	-	5,5,5	0.35	0	5,5,5	0.26	0
4	GOL	A	303	-	5,5,5	0.36	0	5,5,5	0.32	0
7	MTX	B	303	-	35,35,35	0.78	0	46,49,49	1.78	12 (26%)
4	GOL	B	305	-	5,5,5	0.40	0	5,5,5	0.44	0
4	GOL	B	308	-	5,5,5	0.26	0	5,5,5	0.28	0
4	GOL	A	306	-	5,5,5	0.40	0	5,5,5	0.35	0

Mol	Type	Chain	Res	Link	Bond lengths			Bond angles		
					Counts	RMSZ	# Z > 2	Counts	RMSZ	# Z > 2
6	TRS	B	301	-	7,7,7	0.36	0	9,9,9	0.74	0

In the following table, the Chirals column lists the number of chiral outliers, the number of chiral centers analysed, the number of these observed in the model and the number defined in the Chemical Component Dictionary. Similar counts are reported in the Torsion and Rings columns. '-' means no outliers of that kind were identified.

Mol	Type	Chain	Res	Link	Chirals	Torsions	Rings
7	MTX	B	302	-	-	12/25/25/25	0/3/3/3
8	DTT	B	306	-	-	6/8/8/8	-
2	GUN	A	301	-	-	-	0/2/2/2
4	GOL	A	305	-	-	4/4/4/4	-
4	GOL	A	303	-	-	2/4/4/4	-
7	MTX	B	303	-	-	3/25/25/25	0/3/3/3
4	GOL	B	305	-	-	0/4/4/4	-
4	GOL	B	308	-	-	2/4/4/4	-
4	GOL	A	306	-	-	2/4/4/4	-
6	TRS	B	301	-	-	9/9/9/9	-

All (1) bond length outliers are listed below:

Mol	Chain	Res	Type	Atoms	Z	Observed(Å)	Ideal(Å)
7	B	302	MTX	C6-N5	2.40	1.36	1.32

All (26) bond angle outliers are listed below:

Mol	Chain	Res	Type	Atoms	Z	Observed(°)	Ideal(°)
7	B	302	MTX	C2-N1-C8A	5.23	121.33	115.36
7	B	303	MTX	N1-C2-N3	-5.17	120.33	127.22
7	B	302	MTX	N8-C8A-N1	4.75	121.25	115.82
7	B	302	MTX	N1-C2-N3	-4.23	121.58	127.22
7	B	303	MTX	C2-N1-C8A	3.94	119.86	115.36
7	B	303	MTX	N8-C8A-N1	3.46	119.77	115.82
7	B	303	MTX	CA-N-C	2.91	128.71	121.60
7	B	302	MTX	C4A-C4-N3	-2.66	119.26	121.01
7	B	303	MTX	CB-CA-CT	-2.66	103.94	110.35
7	B	303	MTX	C6-C9-N10	-2.60	109.14	113.60
7	B	302	MTX	C6-C7-N8	-2.55	120.63	123.13
7	B	303	MTX	C13-C14-N10	-2.55	117.95	121.62
7	B	302	MTX	C7-N8-C8A	2.47	119.18	116.69

Continued on next page...

Continued from previous page...

Mol	Chain	Res	Type	Atoms	Z	Observed(°)	Ideal(°)
2	A	301	GUN	C8-N7-C5	2.45	107.66	102.99
7	B	303	MTX	C15-C16-C11	-2.43	117.95	120.78
2	A	301	GUN	C5-C6-N1	2.36	118.12	113.95
7	B	302	MTX	CB-CA-N	2.35	115.62	110.88
7	B	303	MTX	C4A-C4-N3	-2.34	119.47	121.01
7	B	302	MTX	C8A-C4A-N5	-2.33	119.60	122.41
7	B	303	MTX	NA2-C2-N1	2.27	121.49	117.79
7	B	302	MTX	CA-N-C	2.23	127.06	121.60
7	B	302	MTX	C4A-C8A-N1	-2.22	118.11	121.71
7	B	303	MTX	CM-N10-C9	2.21	120.72	114.84
7	B	303	MTX	C7-N8-C8A	2.18	118.88	116.69
8	B	306	DTT	C2-C1-S1	-2.17	108.16	114.47
7	B	302	MTX	OE2-CD-CG	2.11	120.81	114.03

There are no chirality outliers.

All (40) torsion outliers are listed below:

Mol	Chain	Res	Type	Atoms
4	A	305	GOL	C1-C2-C3-O3
4	A	306	GOL	O1-C1-C2-C3
4	B	308	GOL	O1-C1-C2-C3
6	B	301	TRS	C1-C-C2-O2
6	B	301	TRS	C3-C-C2-O2
6	B	301	TRS	N-C-C2-O2
6	B	301	TRS	C2-C-C3-O3
8	B	306	DTT	S1-C1-C2-O2
8	B	306	DTT	S1-C1-C2-C3
8	B	306	DTT	C1-C2-C3-C4
8	B	306	DTT	C2-C3-C4-S4
8	B	306	DTT	O3-C3-C4-S4
7	B	302	MTX	CA-CB-CG-CD
7	B	302	MTX	CB-CA-N-C
7	B	302	MTX	CB-CA-CT-O1
7	B	302	MTX	CB-CA-CT-O2
4	A	303	GOL	C1-C2-C3-O3
4	A	305	GOL	O1-C1-C2-C3
7	B	302	MTX	C11-C-N-CA
4	A	305	GOL	O2-C2-C3-O3
4	A	306	GOL	O1-C1-C2-O2
4	B	308	GOL	O1-C1-C2-O2
6	B	301	TRS	C1-C-C3-O3
4	A	303	GOL	O2-C2-C3-O3

Continued on next page...

Continued from previous page...

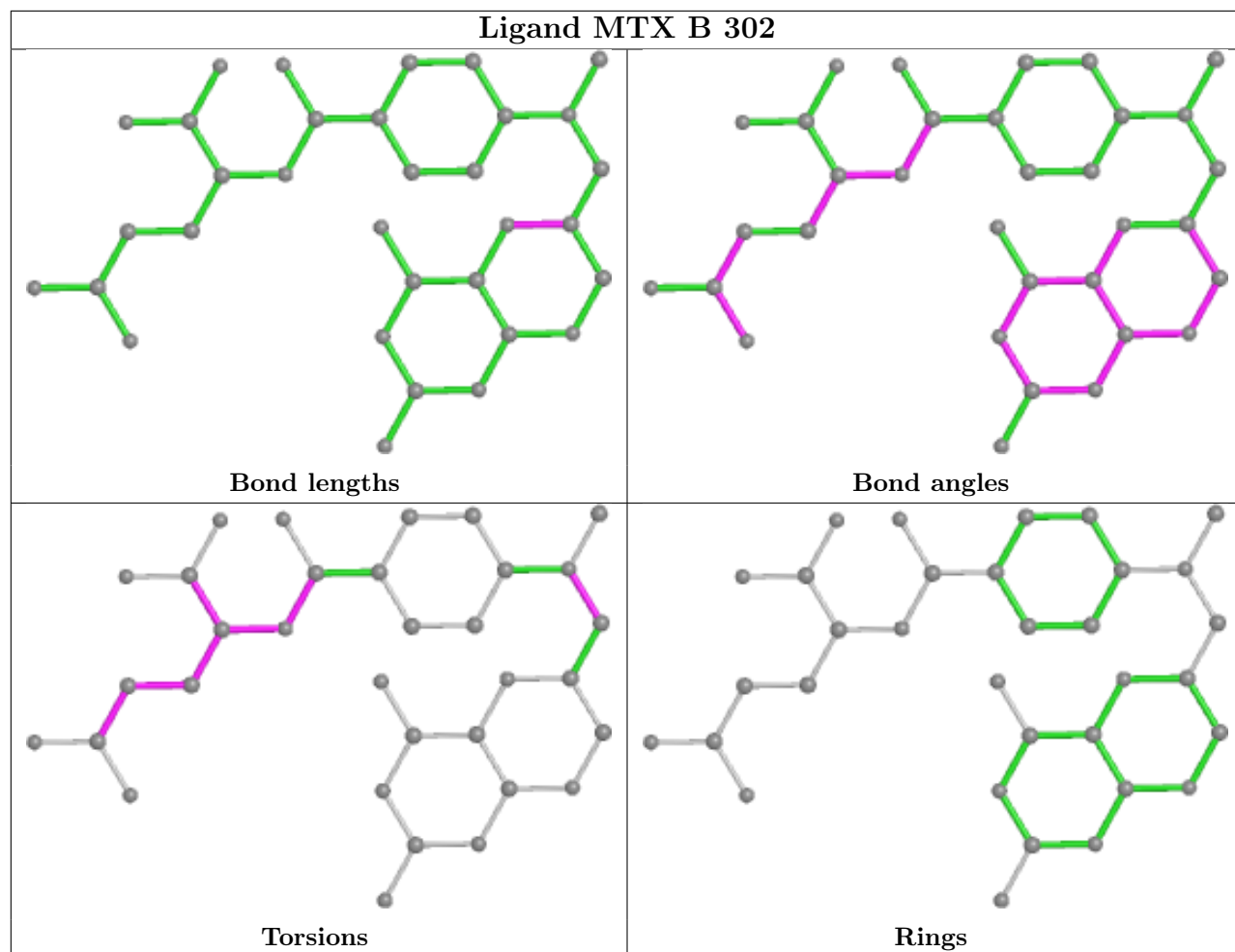
Mol	Chain	Res	Type	Atoms
7	B	302	MTX	O-C-N-CA
7	B	302	MTX	N-CA-CT-O2
8	B	306	DTT	O2-C2-C3-C4
4	A	305	GOL	O1-C1-C2-O2
7	B	302	MTX	N-CA-CT-O1
6	B	301	TRS	C2-C-C1-O1
6	B	301	TRS	N-C-C3-O3
7	B	302	MTX	C6-C9-N10-CM
6	B	301	TRS	C3-C-C1-O1
7	B	302	MTX	CT-CA-CB-CG
7	B	303	MTX	C13-C14-N10-CM
7	B	302	MTX	OE2-CD-CG-CB
7	B	302	MTX	OE1-CD-CG-CB
7	B	303	MTX	C6-C9-N10-C14
6	B	301	TRS	N-C-C1-O1
7	B	303	MTX	OE2-CD-CG-CB

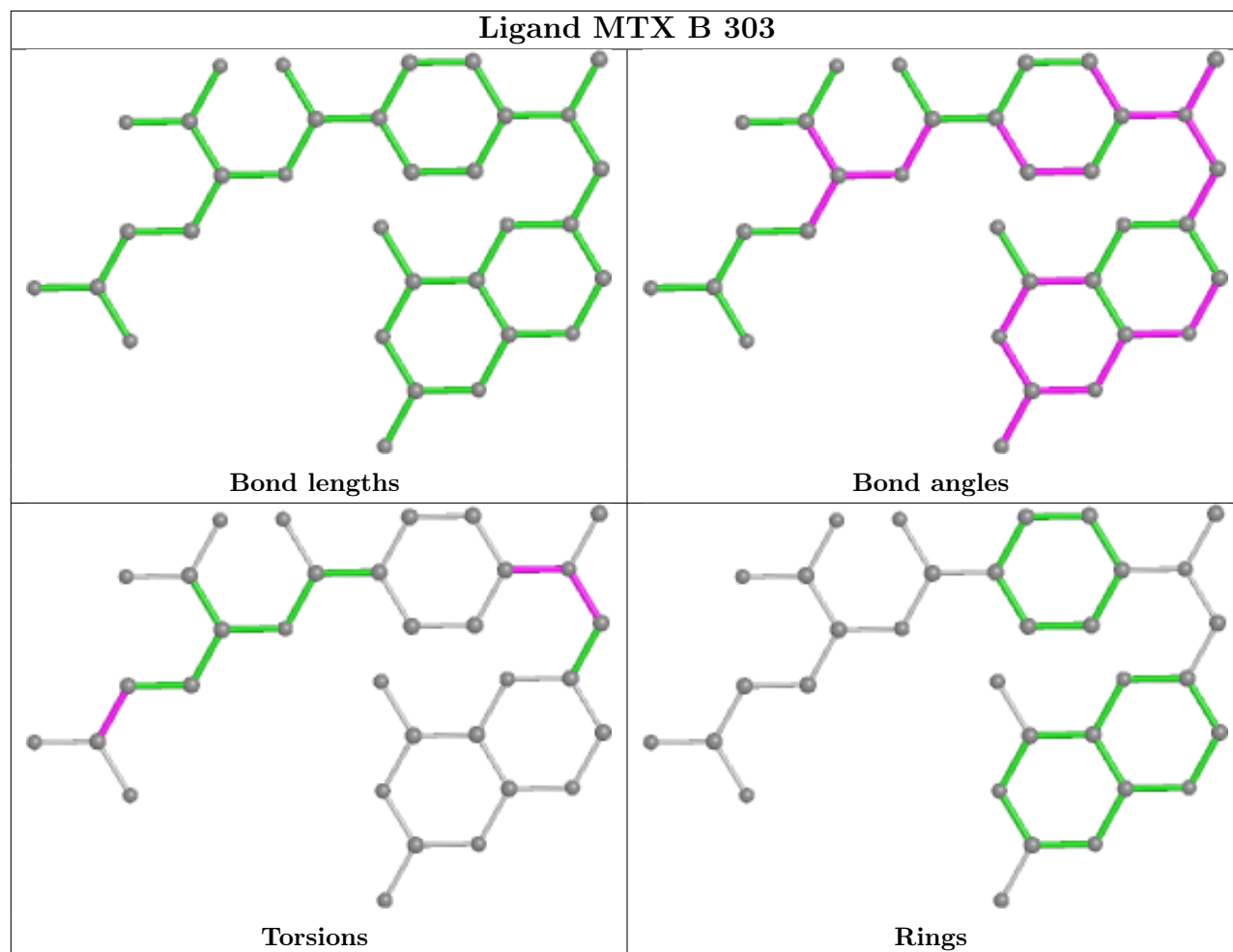
There are no ring outliers.

5 monomers are involved in 14 short contacts:

Mol	Chain	Res	Type	Clashes	Symm-Clashes
7	B	302	MTX	7	0
2	A	301	GUN	1	0
8	B	306	DTT	3	0
7	B	303	MTX	4	0
4	B	308	GOL	1	0

The following is a two-dimensional graphical depiction of Mogul quality analysis of bond lengths, bond angles, torsion angles, and ring geometry for all instances of the Ligand of Interest. In addition, ligands with molecular weight > 250 and outliers as shown on the validation Tables will also be included. For torsion angles, if less than 5% of the Mogul distribution of torsion angles is within 10 degrees of the torsion angle in question, then that torsion angle is considered an outlier. Any bond that is central to one or more torsion angles identified as an outlier by Mogul will be highlighted in the graph. For rings, the root-mean-square deviation (RMSD) between the ring in question and similar rings identified by Mogul is calculated over all ring torsion angles. If the average RMSD is greater than 60 degrees and the minimal RMSD between the ring in question and any Mogul-identified rings is also greater than 60 degrees, then that ring is considered an outlier. The outliers are highlighted in purple. The color gray indicates Mogul did not find sufficient equivalents in the CSD to analyse the geometry.





5.7 Other polymers [\(i\)](#)

There are no such residues in this entry.

5.8 Polymer linkage issues [\(i\)](#)

There are no chain breaks in this entry.

6 Fit of model and data [i](#)

6.1 Protein, DNA and RNA chains [i](#)

In the following table, the column labelled ‘#RSRZ> 2’ contains the number (and percentage) of RSRZ outliers, followed by percent RSRZ outliers for the chain as percentile scores relative to all X-ray entries and entries of similar resolution. The OWAB column contains the minimum, median, 95th percentile and maximum values of the occupancy-weighted average B-factor per residue. The column labelled ‘Q< 0.9’ lists the number of (and percentage) of residues with an average occupancy less than 0.9.

Mol	Chain	Analysed	<RSRZ>	#RSRZ>2	OWAB(Å ²)	Q<0.9
1	A	284/285 (99%)	0.10	14 (4%) 29 33	13, 20, 42, 79	0
1	B	284/285 (99%)	-0.05	4 (1%) 75 79	12, 19, 34, 74	0
All	All	568/570 (99%)	0.03	18 (3%) 47 52	12, 19, 37, 79	0

All (18) RSRZ outliers are listed below:

Mol	Chain	Res	Type	RSRZ
1	B	0	ALA	5.8
1	A	234	GLU	5.2
1	A	235	SER	5.0
1	A	233	LEU	4.6
1	A	236	GLY	4.2
1	B	282	ASN	4.0
1	B	-1	ASN	3.8
1	A	282	ASN	3.5
1	A	232	ARG	3.4
1	B	134[A]	SER	3.2
1	A	42	PRO	3.1
1	A	280	ARG	3.0
1	A	47	TYR	2.8
1	A	-1	ASN	2.7
1	A	238	ILE	2.6
1	A	134[A]	SER	2.5
1	A	237	LYS	2.4
1	A	133[A]	GLU	2.3

6.2 Non-standard residues in protein, DNA, RNA chains [i](#)

There are no non-standard protein/DNA/RNA residues in this entry.

6.3 Carbohydrates [i](#)

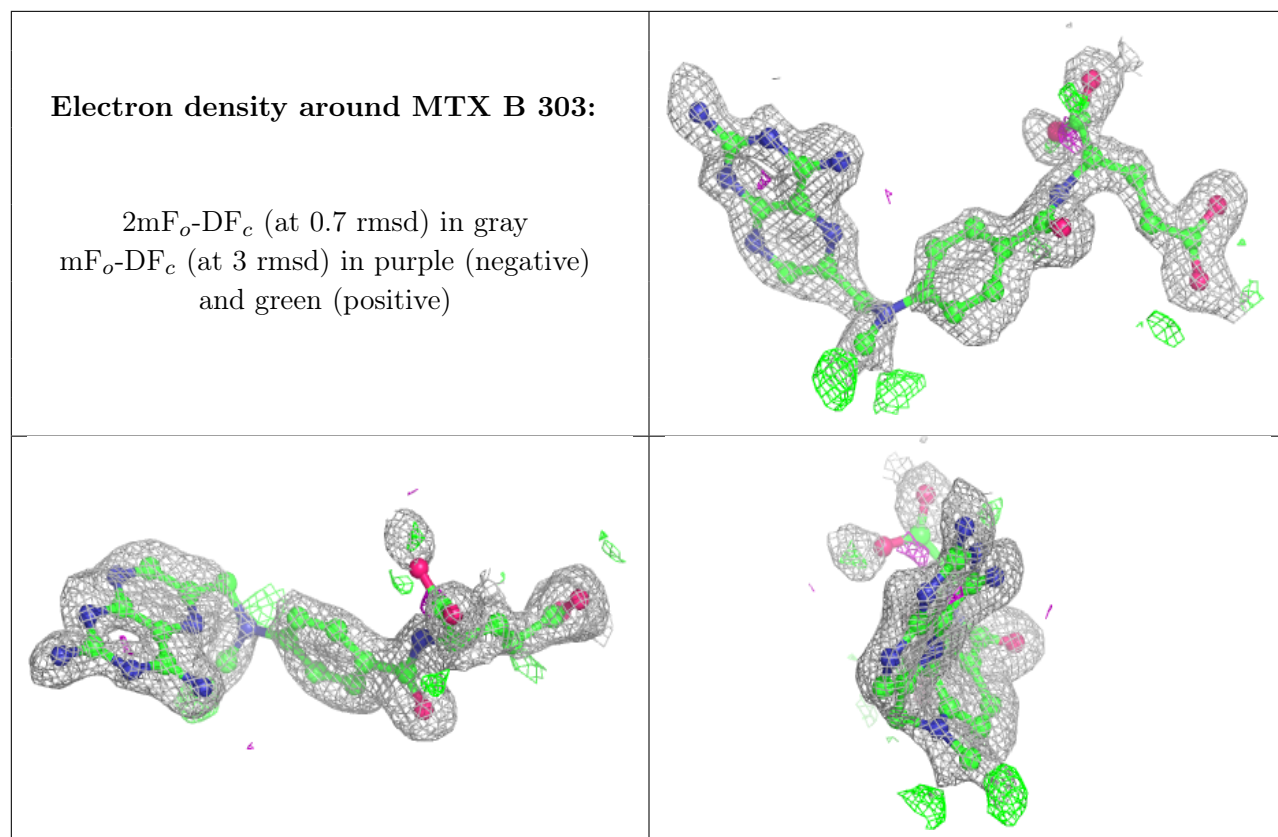
There are no monosaccharides in this entry.

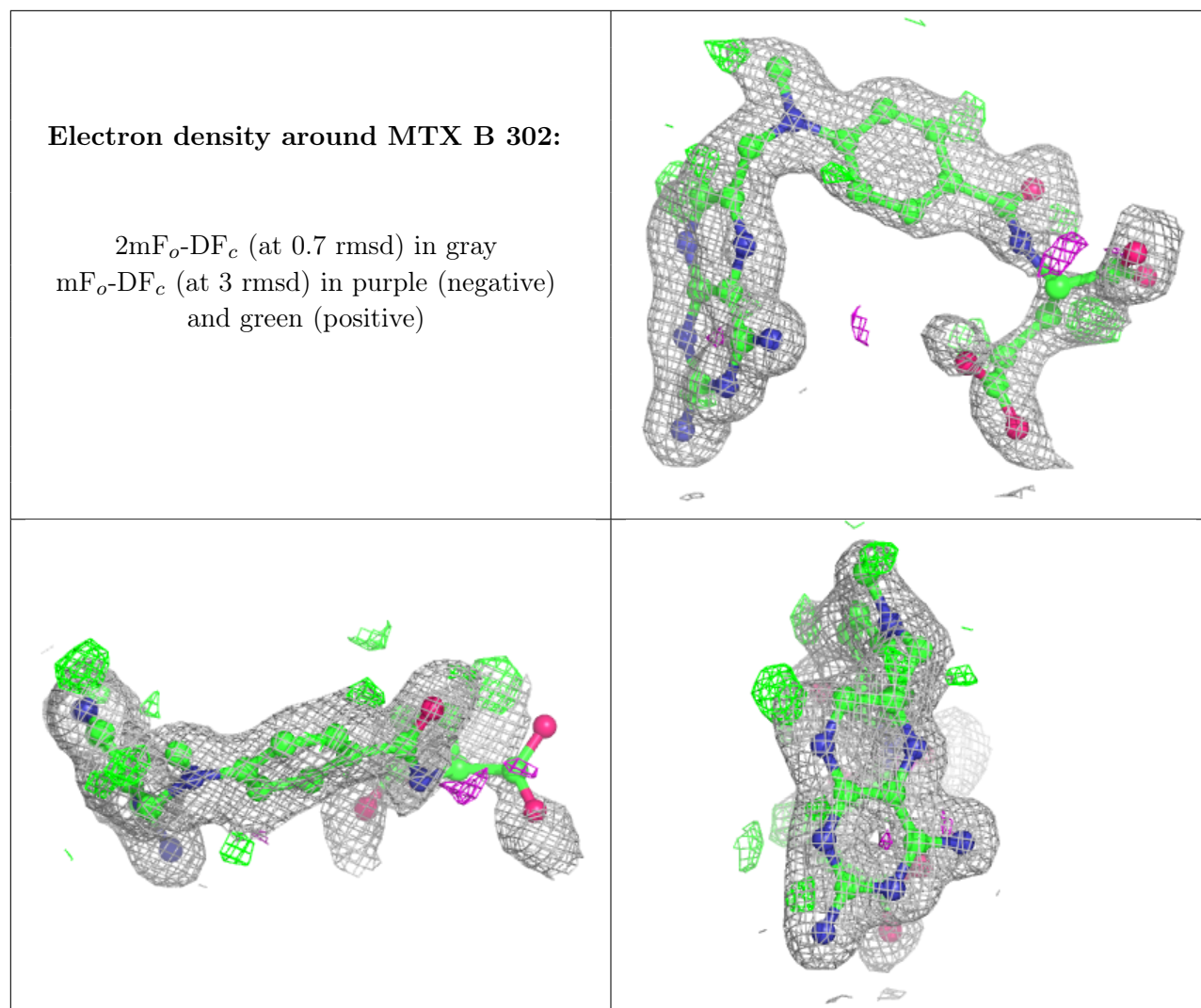
6.4 Ligands [i](#)

In the following table, the Atoms column lists the number of modelled atoms in the group and the number defined in the chemical component dictionary. The B-factors column lists the minimum, median, 95th percentile and maximum values of B factors of atoms in the group. The column labelled 'Q< 0.9' lists the number of atoms with occupancy less than 0.9.

Mol	Type	Chain	Res	Atoms	RSCC	RSR	B-factors(Å ²)	Q<0.9
4	GOL	A	305	6/6	0.66	0.19	56,58,60,62	0
4	GOL	B	308	6/6	0.69	0.26	41,46,48,53	0
7	MTX	B	303	33/33	0.69	0.19	21,32,41,48	33
6	TRS	B	301	8/8	0.72	0.19	31,37,44,44	0
8	DTT	B	306	8/8	0.74	0.20	42,46,48,49	8
2	GUN	A	301	11/11	0.75	0.17	23,32,36,39	11
4	GOL	B	305	6/6	0.76	0.18	39,51,53,55	0
7	MTX	B	302	33/33	0.81	0.17	18,31,58,60	33
4	GOL	A	303	6/6	0.83	0.20	37,49,55,58	0
4	GOL	A	306	6/6	0.85	0.21	36,47,48,50	0
5	CL	B	307	1/1	0.96	0.10	25,25,25,25	0
5	CL	A	304	1/1	0.97	0.08	32,32,32,32	0
5	CL	B	304	1/1	0.98	0.06	28,28,28,28	0
3	K	A	302	1/1	1.00	0.06	21,21,21,21	0

The following is a graphical depiction of the model fit to experimental electron density of all instances of the Ligand of Interest. In addition, ligands with molecular weight > 250 and outliers as shown on the geometry validation Tables will also be included. Each fit is shown from different orientation to approximate a three-dimensional view.





6.5 Other polymers [i](#)

There are no such residues in this entry.