



Full wwPDB X-ray Structure Validation Report ⓘ

Mar 3, 2024 – 06:16 PM EST

PDB ID : 6D5X
Title : Structure of Human ATP:Cobalamin Adenosyltransferase bound to ATP, Adenosylcobalamin, and Triphosphate
Authors : Dodge, G.J.; Campanello, G.; Smith, J.L.; Banerjee, R.
Deposited on : 2018-04-19
Resolution : 2.40 Å(reported)

This is a Full wwPDB X-ray Structure Validation Report for a publicly released PDB entry.

We welcome your comments at validation@mail.wwpdb.org

A user guide is available at

<https://www.wwpdb.org/validation/2017/XrayValidationReportHelp>

with specific help available everywhere you see the ⓘ symbol.

The types of validation reports are described at

<http://www.wwpdb.org/validation/2017/FAQs#types>.

The following versions of software and data (see [references ⓘ](#)) were used in the production of this report:

MolProbity : 4.02b-467
Mogul : 1.8.5 (274361), CSD as541be (2020)
Xtriage (Phenix) : 1.13
EDS : 2.36
buster-report : 1.1.7 (2018)
Percentile statistics : 20191225.v01 (using entries in the PDB archive December 25th 2019)
Refmac : 5.8.0158
CCP4 : 7.0.044 (Gargrove)
Ideal geometry (proteins) : Engh & Huber (2001)
Ideal geometry (DNA, RNA) : Parkinson et al. (1996)
Validation Pipeline (wwPDB-VP) : 2.36

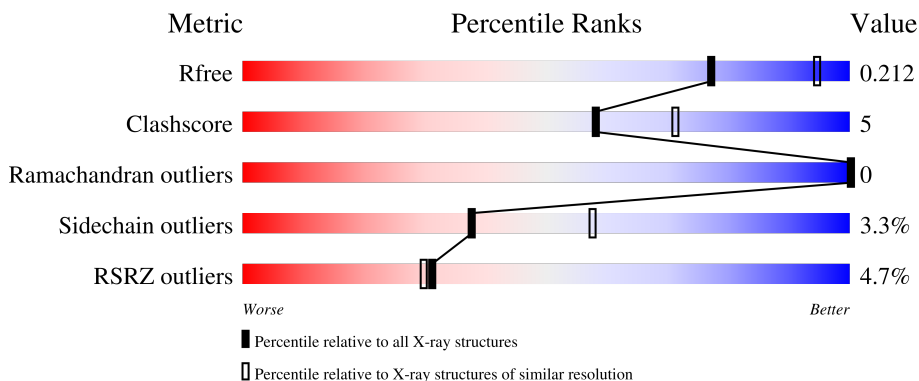
1 Overall quality at a glance

The following experimental techniques were used to determine the structure:

X-RAY DIFFRACTION

The reported resolution of this entry is 2.40 Å.

Percentile scores (ranging between 0-100) for global validation metrics of the entry are shown in the following graphic. The table shows the number of entries on which the scores are based.



Metric	Whole archive (#Entries)	Similar resolution (#Entries, resolution range(Å))
R_{free}	130704	3907 (2.40-2.40)
Clashscore	141614	4398 (2.40-2.40)
Ramachandran outliers	138981	4318 (2.40-2.40)
Sidechain outliers	138945	4319 (2.40-2.40)
RSRZ outliers	127900	3811 (2.40-2.40)

The table below summarises the geometric issues observed across the polymeric chains and their fit to the electron density. The red, orange, yellow and green segments of the lower bar indicate the fraction of residues that contain outliers for ≥ 3 , 2, 1 and 0 types of geometric quality criteria respectively. A grey segment represents the fraction of residues that are not modelled. The numeric value for each fraction is indicated below the corresponding segment, with a dot representing fractions $\leq 5\%$. The upper red bar (where present) indicates the fraction of residues that have poor fit to the electron density. The numeric value is given above the bar.

Mol	Chain	Length	Quality of chain
1	A	196	 5% 72% 5% 23%
1	B	196	 4% 82% 12% 7%
1	C	196	 3% 84% 8% 8%

2 Entry composition [i](#)

There are 8 unique types of molecules in this entry. The entry contains 4401 atoms, of which 0 are hydrogens and 0 are deuteriums.

In the tables below, the ZeroOcc column contains the number of atoms modelled with zero occupancy, the AltConf column contains the number of residues with at least one atom in alternate conformation and the Trace column contains the number of residues modelled with at most 2 atoms.

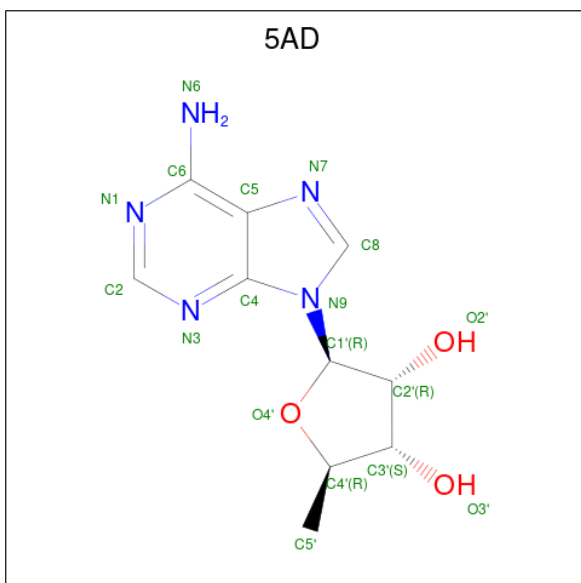
- Molecule 1 is a protein called Cob(I)yrinic acid a,c-diamide adenosyltransferase, mitochondrial.

Mol	Chain	Residues	Atoms					ZeroOcc	AltConf	Trace
			Total	C	N	O	S			
1	A	151	Total 1180	C 752	N 197	O 225	S 6	0	0	0
1	B	183	Total 1438	C 911	N 246	O 274	S 7	0	1	0
1	C	181	Total 1419	C 896	N 245	O 271	S 7	0	1	0

There are 3 discrepancies between the modelled and reference sequences:

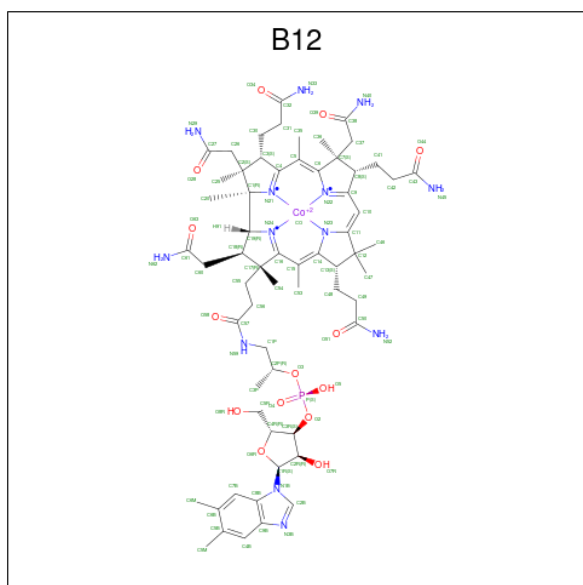
Chain	Residue	Modelled	Actual	Comment	Reference
A	55	MET	-	initiating methionine	UNP Q96EY8
B	55	MET	-	initiating methionine	UNP Q96EY8
C	55	MET	-	initiating methionine	UNP Q96EY8

- Molecule 2 is 5'-DEOXYADENOSINE (three-letter code: 5AD) (formula: C₁₀H₁₃N₅O₃) (labeled as "Ligand of Interest" by depositor).



Mol	Chain	Residues	Atoms				ZeroOcc	AltConf
			Total	C	N	O		
2	A	1	18	10	5	3	0	0
2	B	1	18	10	5	3	0	0

- Molecule 3 is COBALAMIN (three-letter code: B12) (formula: $C_{62}H_{89}CoN_{13}O_{14}P$) (labeled as "Ligand of Interest" by depositor).



Mol	Chain	Residues	Atoms					ZeroOcc	AltConf	
			Total	C	Co	N	O			P
3	A	1	91	62	1	13	14	1	0	0
3	B	1	91	62	1	13	14	1	0	0

- Molecule 4 is SULFATE ION (three-letter code: SO4) (formula: O_4S).

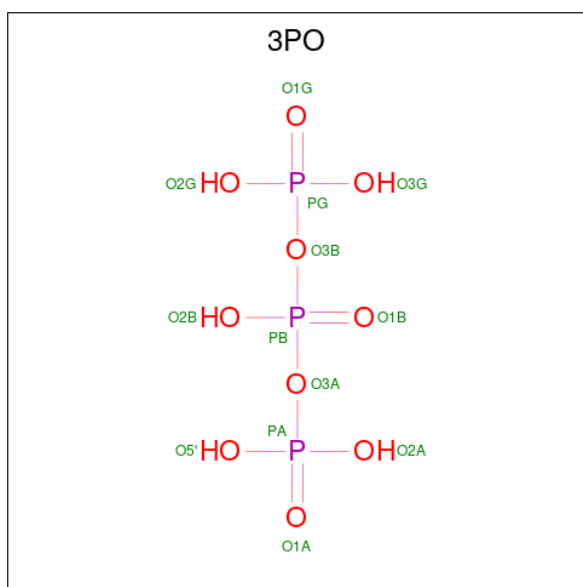


Mol	Chain	Residues	Atoms	ZeroOcc	AltConf
4	A	1	Total O S 5 4 1	0	0
4	B	1	Total O S 5 4 1	0	0
4	C	1	Total O S 5 4 1	0	0
4	C	1	Total O S 5 4 1	0	0
4	C	1	Total O S 5 4 1	0	0

- Molecule 5 is MAGNESIUM ION (three-letter code: MG) (formula: Mg) (labeled as "Ligand of Interest" by depositor).

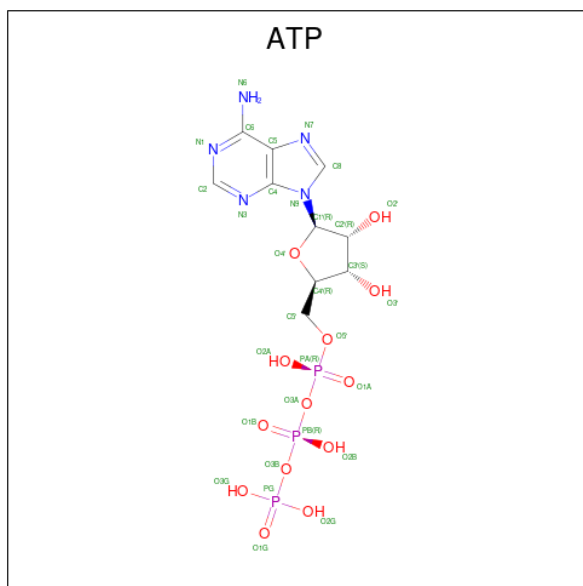
Mol	Chain	Residues	Atoms	ZeroOcc	AltConf
5	A	1	Total Mg 1 1	0	0
5	C	2	Total Mg 2 2	0	0

- Molecule 6 is TRIPHOSPHATE (three-letter code: 3PO) (formula: H₅O₁₀P₃) (labeled as "Ligand of Interest" by depositor).



Mol	Chain	Residues	Atoms				ZeroOcc	AltConf
6	A	1	Total	O	P	0	0	
			13	10	3			

- Molecule 7 is ADENOSINE-5'-TRIPHOSPHATE (three-letter code: ATP) (formula: $C_{10}H_{16}N_5O_{13}P_3$) (labeled as "Ligand of Interest" by depositor).



Mol	Chain	Residues	Atoms					ZeroOcc	AltConf
7	C	1	Total	C	N	O	P	0	0
			31	10	5	13	3		

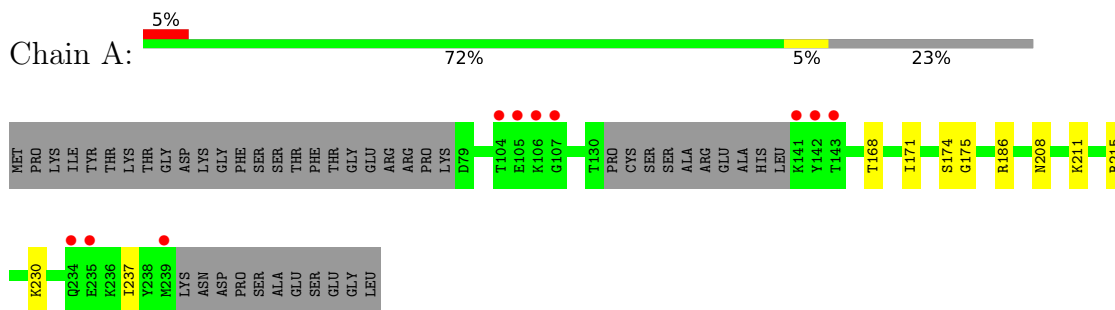
- Molecule 8 is water.

Mol	Chain	Residues	Atoms		ZeroOcc	AltConf
8	A	12	Total 12	O 12	0	0
8	B	27	Total 27	O 27	0	0
8	C	35	Total 35	O 35	0	0

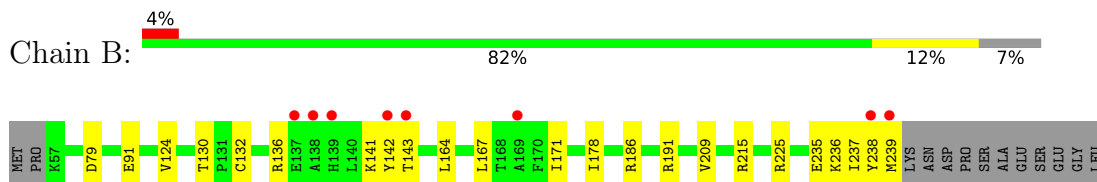
3 Residue-property plots [i](#)

These plots are drawn for all protein, RNA, DNA and oligosaccharide chains in the entry. The first graphic for a chain summarises the proportions of the various outlier classes displayed in the second graphic. The second graphic shows the sequence view annotated by issues in geometry and electron density. Residues are color-coded according to the number of geometric quality criteria for which they contain at least one outlier: green = 0, yellow = 1, orange = 2 and red = 3 or more. A red dot above a residue indicates a poor fit to the electron density ($RSRZ > 2$). Stretches of 2 or more consecutive residues without any outlier are shown as a green connector. Residues present in the sample, but not in the model, are shown in grey.

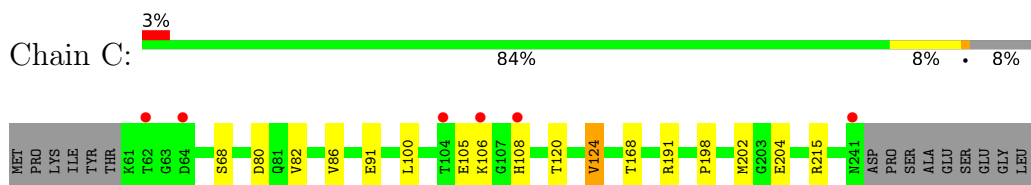
- Molecule 1: Cob(I)yrinic acid a,c-diamide adenosyltransferase, mitochondrial



- Molecule 1: Cob(I)yrinic acid a,c-diamide adenosyltransferase, mitochondrial



- Molecule 1: Cob(I)yrinic acid a,c-diamide adenosyltransferase, mitochondrial



4 Data and refinement statistics

Property	Value	Source
Space group	P 31 2 1	Depositor
Cell constants a, b, c, α , β , γ	112.69Å 112.69Å 117.94Å 90.00° 90.00° 120.00°	Depositor
Resolution (Å)	48.79 – 2.40 48.79 – 2.40	Depositor EDS
% Data completeness (in resolution range)	99.9 (48.79-2.40) 96.0 (48.79-2.40)	Depositor EDS
R_{merge}	0.10	Depositor
R_{sym}	(Not available)	Depositor
$\langle I/\sigma(I) \rangle$ ¹	0.76 (at 2.39Å)	Xtrriage
Refinement program	PHENIX	Depositor
R, R_{free}	0.184 , 0.212 0.183 , 0.212	Depositor DCC
R_{free} test set	2012 reflections (5.85%)	wwPDB-VP
Wilson B-factor (Å ²)	53.9	Xtrriage
Anisotropy	0.295	Xtrriage
Bulk solvent k_{sol} (e/Å ³), B_{sol} (Å ²)	0.31 , 51.0	EDS
L-test for twinning ²	$\langle L \rangle = 0.46$, $\langle L^2 \rangle = 0.29$	Xtrriage
Estimated twinning fraction	0.044 for -h,-k,l	Xtrriage
F_o, F_c correlation	0.95	EDS
Total number of atoms	4401	wwPDB-VP
Average B, all atoms (Å ²)	69.0	wwPDB-VP

Xtrriage's analysis on translational NCS is as follows: *The largest off-origin peak in the Patterson function is 4.21% of the height of the origin peak. No significant pseudotranslation is detected.*

¹Intensities estimated from amplitudes.

²Theoretical values of $\langle |L| \rangle$, $\langle L^2 \rangle$ for acentric reflections are 0.5, 0.333 respectively for untwinned datasets, and 0.375, 0.2 for perfectly twinned datasets.

5 Model quality [i](#)

5.1 Standard geometry [i](#)

Bond lengths and bond angles in the following residue types are not validated in this section: 3PO, MG, ATP, SO4, 5AD, B12

The Z score for a bond length (or angle) is the number of standard deviations the observed value is removed from the expected value. A bond length (or angle) with $|Z| > 5$ is considered an outlier worth inspection. RMSZ is the root-mean-square of all Z scores of the bond lengths (or angles).

Mol	Chain	Bond lengths		Bond angles	
		RMSZ	# Z >5	RMSZ	# Z >5
1	A	0.40	0/1200	0.45	0/1621
1	B	0.33	0/1465	0.54	0/1977
1	C	0.32	0/1445	0.49	0/1949
All	All	0.35	0/4110	0.50	0/5547

There are no bond length outliers.

There are no bond angle outliers.

There are no chirality outliers.

There are no planarity outliers.

5.2 Too-close contacts [i](#)

In the following table, the Non-H and H(model) columns list the number of non-hydrogen atoms and hydrogen atoms in the chain respectively. The H(added) column lists the number of hydrogen atoms added and optimized by MolProbity. The Clashes column lists the number of clashes within the asymmetric unit, whereas Symm-Clashes lists symmetry-related clashes.

Mol	Chain	Non-H	H(model)	H(added)	Clashes	Symm-Clashes
1	A	1180	0	1182	6	0
1	B	1438	0	1439	12	0
1	C	1419	0	1418	12	0
2	A	18	0	12	2	0
2	B	18	0	13	0	0
3	A	91	0	88	9	0
3	B	91	0	88	6	0
4	A	5	0	0	0	0
4	B	5	0	0	0	0
4	C	15	0	0	0	0

Continued on next page...

Continued from previous page...

Mol	Chain	Non-H	H(model)	H(added)	Clashes	Symm-Clashes
5	A	1	0	0	0	0
5	C	2	0	0	0	0
6	A	13	0	0	1	0
7	C	31	0	12	0	0
8	A	12	0	0	0	0
8	B	27	0	0	1	0
8	C	35	0	0	0	0
All	All	4401	0	4252	41	0

The all-atom clashscore is defined as the number of clashes found per 1000 atoms (including hydrogen atoms). The all-atom clashscore for this structure is 5.

All (41) close contacts within the same asymmetric unit are listed below, sorted by their clash magnitude.

Atom-1	Atom-2	Interatomic distance (Å)	Clash overlap (Å)
1:C:105:GLU:HG3	1:C:106:LYS:H	1.50	0.76
1:C:105:GLU:HG3	1:C:106:LYS:N	2.07	0.69
1:C:105:GLU:CD	1:C:106:LYS:HG3	2.21	0.61
3:A:302:B12:H601	3:A:302:B12:H252	1.83	0.60
1:B:164:LEU:HD13	1:B:225:ARG:CZ	2.32	0.59
3:A:302:B12:H491	3:A:302:B12:H533	1.85	0.58
1:B:186:ARG:HD2	3:B:302:B12:O39	2.05	0.56
1:B:142:TYR:O	1:B:143:THR:OG1	2.16	0.55
1:C:105:GLU:OE2	1:C:106:LYS:CD	2.55	0.55
2:A:301:5AD:H5'2	6:A:305:3PO:O1G	2.07	0.54
3:A:302:B12:H351	3:A:302:B12:H362	1.88	0.54
3:A:302:B12:H471	1:C:86:VAL:HG12	1.89	0.54
1:C:105:GLU:OE2	1:C:106:LYS:HD3	2.08	0.53
1:B:132:CYS:O	1:B:136:ARG:HD3	2.09	0.53
3:A:302:B12:O8R	3:A:302:B12:N62	2.41	0.53
1:A:208:ASN:HA	1:A:211:LYS:HG2	1.93	0.51
1:B:91:GLU:CD	1:B:191:ARG:HH22	2.15	0.50
1:C:91:GLU:CD	1:C:191:ARG:HH22	2.13	0.50
1:C:202:MET:HE3	1:C:204:GLU:HG3	1.95	0.48
1:B:79:ASP:OD2	1:C:198:PRO:HG3	2.14	0.48
1:B:215:ARG:NH1	8:B:403:HOH:O	2.46	0.47
3:B:302:B12:H312	3:B:302:B12:C4B	2.44	0.47
1:A:171:ILE:H	3:A:302:B12:H452	1.63	0.47
1:B:167:LEU:HD22	1:B:225:ARG:HD3	1.98	0.45
1:B:171:ILE:HG21	1:B:235:GLU:OE1	2.17	0.45
1:C:80:ASP:OD1	1:C:82:VAL:HG12	2.17	0.45

Continued on next page...

Continued from previous page...

Atom-1	Atom-2	Interatomic distance (Å)	Clash overlap (Å)
2:A:301:5AD:H4'	3:A:302:B12:C16	2.47	0.45
1:A:174:SER:OG	1:A:175:GLY:N	2.50	0.45
1:B:167:LEU:HD22	1:B:225:ARG:CD	2.46	0.45
1:A:186:ARG:HD2	3:A:302:B12:O39	2.17	0.44
1:A:171:ILE:HG22	1:A:237:ILE:HG12	2.00	0.43
3:B:302:B12:H362	3:B:302:B12:H351	2.00	0.43
1:B:124:VAL:HG13	1:B:209:VAL:HG13	2.01	0.43
3:B:302:B12:H262	3:B:302:B12:H91	1.88	0.43
3:B:302:B12:H262	3:B:302:B12:H601	2.01	0.43
1:C:105:GLU:CD	1:C:106:LYS:CD	2.87	0.43
3:B:302:B12:H363	3:B:302:B12:H411	1.77	0.42
1:A:230:LYS:HA	1:A:230:LYS:HD2	1.73	0.42
1:C:120:THR:O	1:C:124:VAL:HG13	2.18	0.42
1:B:130:THR:HG21	1:B:143:THR:HG21	2.02	0.42
3:A:302:B12:H463	3:A:302:B12:H481	1.47	0.40

There are no symmetry-related clashes.

5.3 Torsion angles [i](#)

5.3.1 Protein backbone [i](#)

In the following table, the Percentiles column shows the percent Ramachandran outliers of the chain as a percentile score with respect to all X-ray entries followed by that with respect to entries of similar resolution.

The Analysed column shows the number of residues for which the backbone conformation was analysed, and the total number of residues.

Mol	Chain	Analysed	Favoured	Allowed	Outliers	Percentiles	
1	A	147/196 (75%)	145 (99%)	2 (1%)	0	100	100
1	B	182/196 (93%)	176 (97%)	6 (3%)	0	100	100
1	C	180/196 (92%)	176 (98%)	4 (2%)	0	100	100
All	All	509/588 (87%)	497 (98%)	12 (2%)	0	100	100

There are no Ramachandran outliers to report.

5.3.2 Protein sidechains [i](#)

In the following table, the Percentiles column shows the percent sidechain outliers of the chain as a percentile score with respect to all X-ray entries followed by that with respect to entries of similar resolution.

The Analysed column shows the number of residues for which the sidechain conformation was analysed, and the total number of residues.

Mol	Chain	Analysed	Rotameric	Outliers	Percentiles	
1	A	126/164 (77%)	124 (98%)	2 (2%)	62	79
1	B	154/164 (94%)	148 (96%)	6 (4%)	32	50
1	C	152/164 (93%)	146 (96%)	6 (4%)	32	50
All	All	432/492 (88%)	418 (97%)	14 (3%)	38	59

All (14) residues with a non-rotameric sidechain are listed below:

Mol	Chain	Res	Type
1	A	168	THR
1	A	215	ARG
1	B	141	LYS
1	B	178	ILE
1	B	236	LYS
1	B	237	ILE
1	B	238	TYR
1	B	239	MET
1	C	68	SER
1	C	100	LEU
1	C	108	HIS
1	C	124	VAL
1	C	168	THR
1	C	215	ARG

Sometimes sidechains can be flipped to improve hydrogen bonding and reduce clashes. There are no such sidechains identified.

5.3.3 RNA [i](#)

There are no RNA molecules in this entry.

5.4 Non-standard residues in protein, DNA, RNA chains [i](#)

There are no non-standard protein/DNA/RNA residues in this entry.

5.5 Carbohydrates [i](#)

There are no monosaccharides in this entry.

5.6 Ligand geometry [i](#)

Of 14 ligands modelled in this entry, 3 are monoatomic - leaving 11 for Mogul analysis.

In the following table, the Counts columns list the number of bonds (or angles) for which Mogul statistics could be retrieved, the number of bonds (or angles) that are observed in the model and the number of bonds (or angles) that are defined in the Chemical Component Dictionary. The Link column lists molecule types, if any, to which the group is linked. The Z score for a bond length (or angle) is the number of standard deviations the observed value is removed from the expected value. A bond length (or angle) with $|Z| > 2$ is considered an outlier worth inspection. RMSZ is the root-mean-square of all Z scores of the bond lengths (or angles).

Mol	Type	Chain	Res	Link	Bond lengths			Bond angles		
					Counts	RMSZ	# Z > 2	Counts	RMSZ	# Z > 2
4	SO4	B	303	-	4,4,4	0.14	0	6,6,6	0.22	0
3	B12	B	302	2	90,101,101	0.88	4 (4%)	137,166,166	1.09	12 (8%)
4	SO4	C	305	-	4,4,4	0.14	0	6,6,6	0.08	0
4	SO4	C	304	-	4,4,4	0.14	0	6,6,6	0.06	0
2	5AD	B	301	3	17,20,20	0.65	0	15,30,30	0.79	1 (6%)
4	SO4	C	303	-	4,4,4	0.13	0	6,6,6	0.15	0
4	SO4	A	303	-	4,4,4	0.16	0	6,6,6	0.13	0
6	3PO	A	305	5	8,12,12	0.71	0	15,20,20	1.30	2 (13%)
3	B12	A	302	2	90,101,101	0.84	3 (3%)	137,166,166	1.08	10 (7%)
7	ATP	C	301	5	26,33,33	0.94	1 (3%)	31,52,52	1.42	5 (16%)
2	5AD	A	301	3	17,20,20	0.66	0	15,30,30	0.81	1 (6%)

In the following table, the Chirals column lists the number of chiral outliers, the number of chiral centers analysed, the number of these observed in the model and the number defined in the Chemical Component Dictionary. Similar counts are reported in the Torsion and Rings columns. '-' means no outliers of that kind were identified.

Mol	Type	Chain	Res	Link	Chirals	Torsions	Rings
3	B12	B	302	2	-	11/52/223/223	0/3/11/11
2	5AD	B	301	3	-	0/0/20/20	0/3/3/3
6	3PO	A	305	5	-	4/12/12/12	-
7	ATP	C	301	5	-	3/18/38/38	0/3/3/3
3	B12	A	302	2	-	10/52/223/223	0/3/11/11
2	5AD	A	301	3	-	0/0/20/20	0/3/3/3

All (8) bond length outliers are listed below:

Mol	Chain	Res	Type	Atoms	Z	Observed(Å)	Ideal(Å)
3	B	302	B12	C14-N23	5.21	1.41	1.35
3	A	302	B12	C14-N23	4.30	1.40	1.35
3	A	302	B12	C16-C15	3.46	1.54	1.44
3	B	302	B12	C16-C15	3.40	1.54	1.44
7	C	301	ATP	C5-C4	2.47	1.47	1.40
3	B	302	B12	C13-C14	2.28	1.56	1.52
3	A	302	B12	C1P-C2P	2.24	1.57	1.51
3	B	302	B12	C1P-C2P	2.10	1.56	1.51

All (31) bond angle outliers are listed below:

Mol	Chain	Res	Type	Atoms	Z	Observed(°)	Ideal(°)
3	A	302	B12	C20-C1-C19	-3.59	105.90	109.36
3	A	302	B12	C10-C9-N22	3.41	129.64	125.73
7	C	301	ATP	N3-C2-N1	-3.31	123.51	128.68
6	A	305	3PO	PB-O3B-PG	-3.16	121.99	132.83
7	C	301	ATP	PB-O3B-PG	-3.14	122.05	132.83
3	A	302	B12	C19-C1-N21	3.12	105.36	102.16
7	C	301	ATP	PA-O3A-PB	-3.02	122.45	132.83
3	B	302	B12	C10-C9-N22	3.00	129.17	125.73
3	B	302	B12	C55-C17-C18	-2.96	105.43	111.15
3	B	302	B12	C20-C1-C19	-2.63	106.82	109.36
3	A	302	B12	C15-C16-N24	-2.62	118.65	122.42
7	C	301	ATP	C4-C5-N7	-2.60	106.69	109.40
3	B	302	B12	C15-C16-N24	-2.50	118.81	122.42
3	B	302	B12	P-O2-C3R	2.50	128.49	119.41
3	B	302	B12	C30-C3-C2	-2.48	113.84	119.09
3	B	302	B12	C1-C19-C18	-2.40	117.94	121.88
2	A	301	5AD	C5-C6-N6	2.38	123.97	120.35
3	B	302	B12	C48-C13-C14	2.34	114.31	108.49
7	C	301	ATP	C3'-C2'-C1'	2.29	104.42	100.98
3	B	302	B12	C35-C5-C6	2.28	126.06	122.43
3	A	302	B12	C30-C3-C2	-2.26	114.30	119.09
3	A	302	B12	C48-C13-C12	-2.26	110.30	116.63
3	A	302	B12	C55-C17-C18	-2.22	106.85	111.15
2	B	301	5AD	C5-C6-N6	2.20	123.69	120.35
6	A	305	3PO	PB-O3A-PA	-2.20	125.28	132.83
3	A	302	B12	C56-C55-C17	-2.13	111.41	115.52
3	B	302	B12	C8-C9-C10	-2.12	118.74	123.32
3	B	302	B12	C36-C7-C37	2.08	114.23	110.80
3	B	302	B12	C56-C55-C17	-2.05	111.57	115.52
3	A	302	B12	C9-C10-C11	-2.01	123.06	125.97

Continued on next page...

Continued from previous page...

Mol	Chain	Res	Type	Atoms	Z	Observed(°)	Ideal(°)
3	A	302	B12	C8-C9-C10	-2.01	118.99	123.32

There are no chirality outliers.

All (28) torsion outliers are listed below:

Mol	Chain	Res	Type	Atoms
3	A	302	B12	C14-C13-C48-C49
3	A	302	B12	C1P-C2P-O3-P
3	A	302	B12	C3P-C2P-O3-P
3	B	302	B12	C42-C41-C8-C9
3	B	302	B12	C14-C13-C48-C49
6	A	305	3PO	PB-O3B-PG-O3G
3	B	302	B12	C42-C41-C8-C7
3	A	302	B12	C12-C13-C48-C49
3	B	302	B12	C18-C60-C61-O63
3	B	302	B12	C18-C60-C61-N62
3	B	302	B12	C1P-C2P-O3-P
7	C	301	ATP	PG-O3B-PB-O1B
3	B	302	B12	C8-C41-C42-C43
3	B	302	B12	C3P-C2P-O3-P
6	A	305	3PO	PB-O3A-PA-O2A
3	B	302	B12	C41-C42-C43-O44
3	A	302	B12	C18-C60-C61-O63
3	A	302	B12	C18-C60-C61-N62
3	B	302	B12	C41-C42-C43-N45
7	C	301	ATP	PG-O3B-PB-O2B
7	C	301	ATP	PB-O3A-PA-O2A
3	A	302	B12	C42-C41-C8-C9
3	A	302	B12	C2P-O3-P-O5
3	B	302	B12	C2P-O3-P-O5
3	A	302	B12	C41-C42-C43-N45
6	A	305	3PO	PB-O3B-PG-O1G
6	A	305	3PO	PB-O3B-PG-O2G
3	A	302	B12	C41-C42-C43-O44

There are no ring outliers.

4 monomers are involved in 16 short contacts:

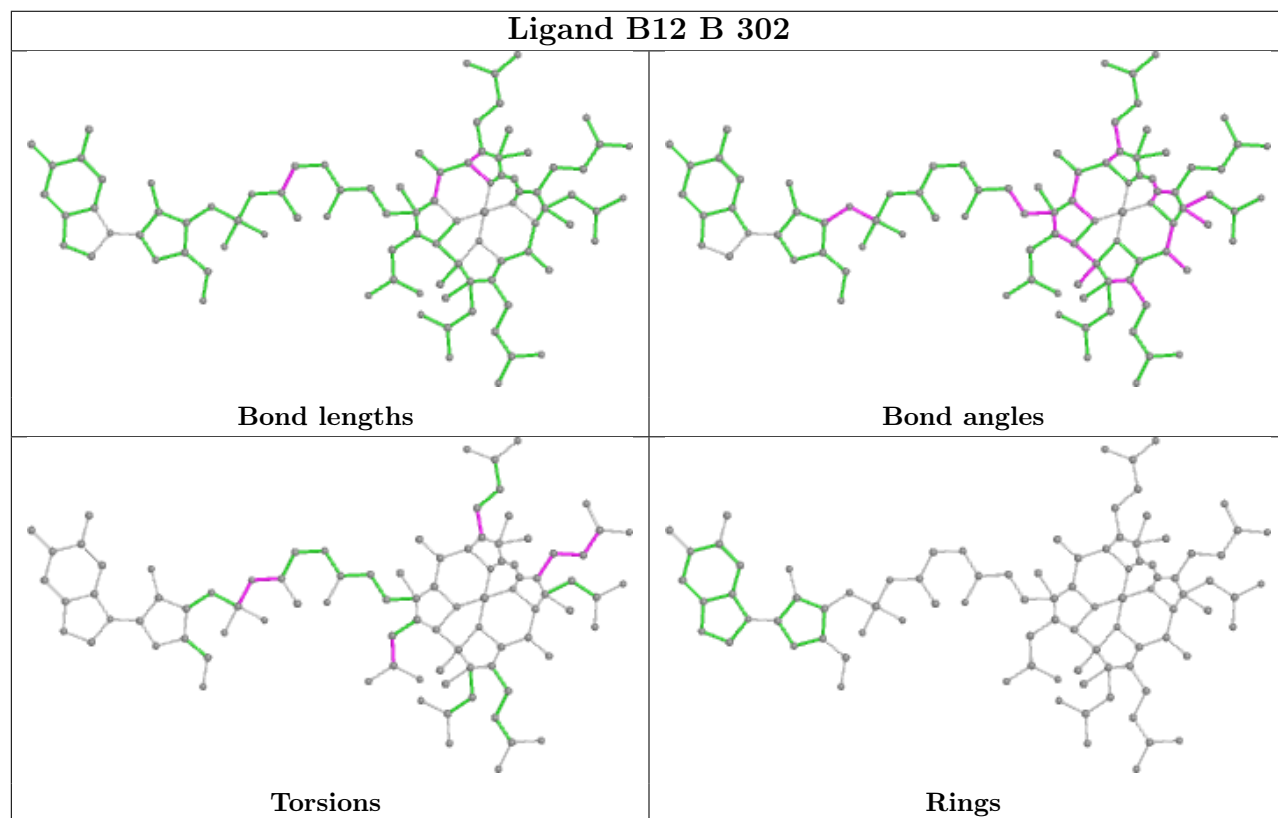
Mol	Chain	Res	Type	Clashes	Symm-Clashes
3	B	302	B12	6	0
6	A	305	3PO	1	0

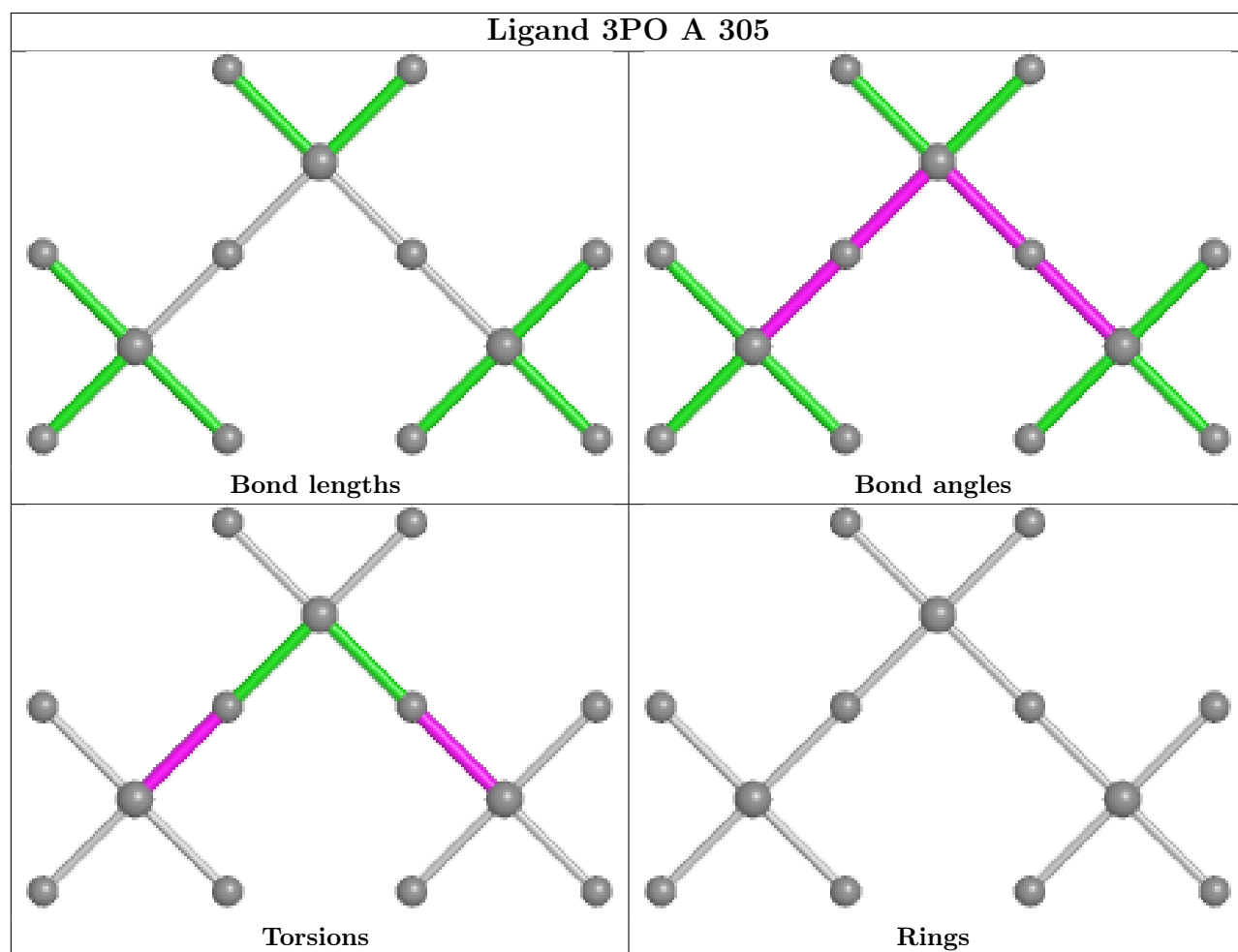
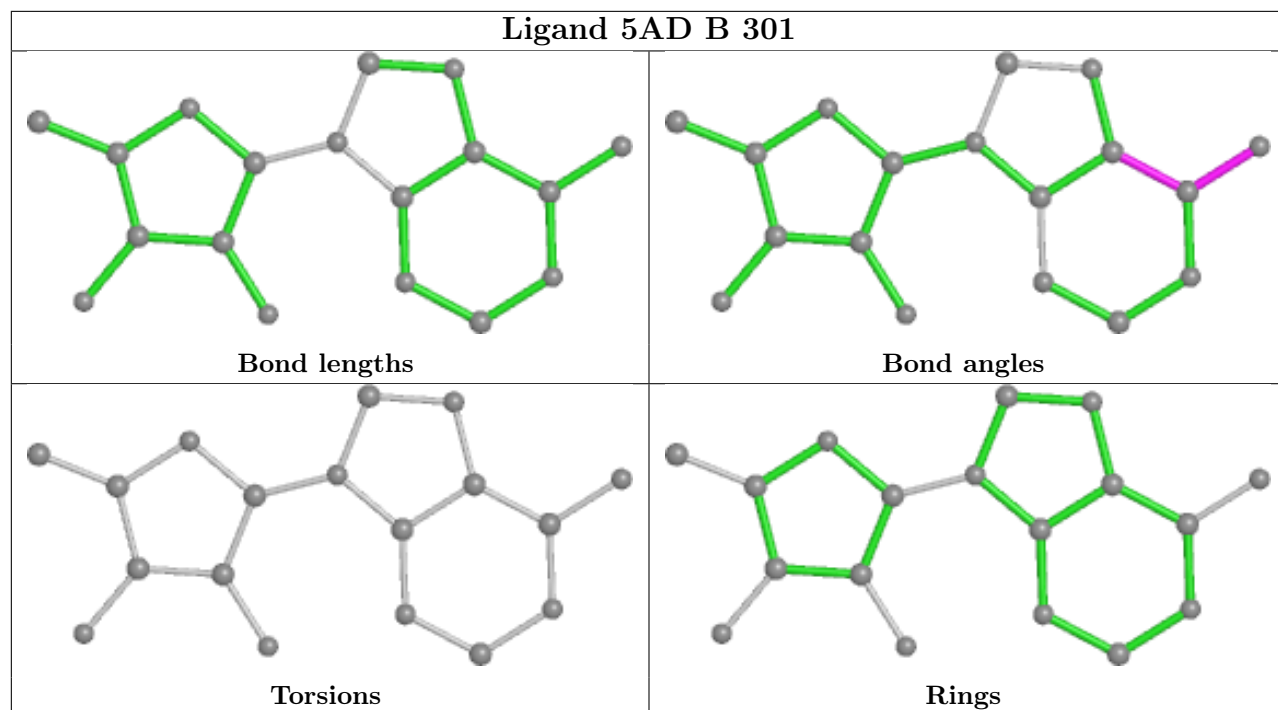
Continued on next page...

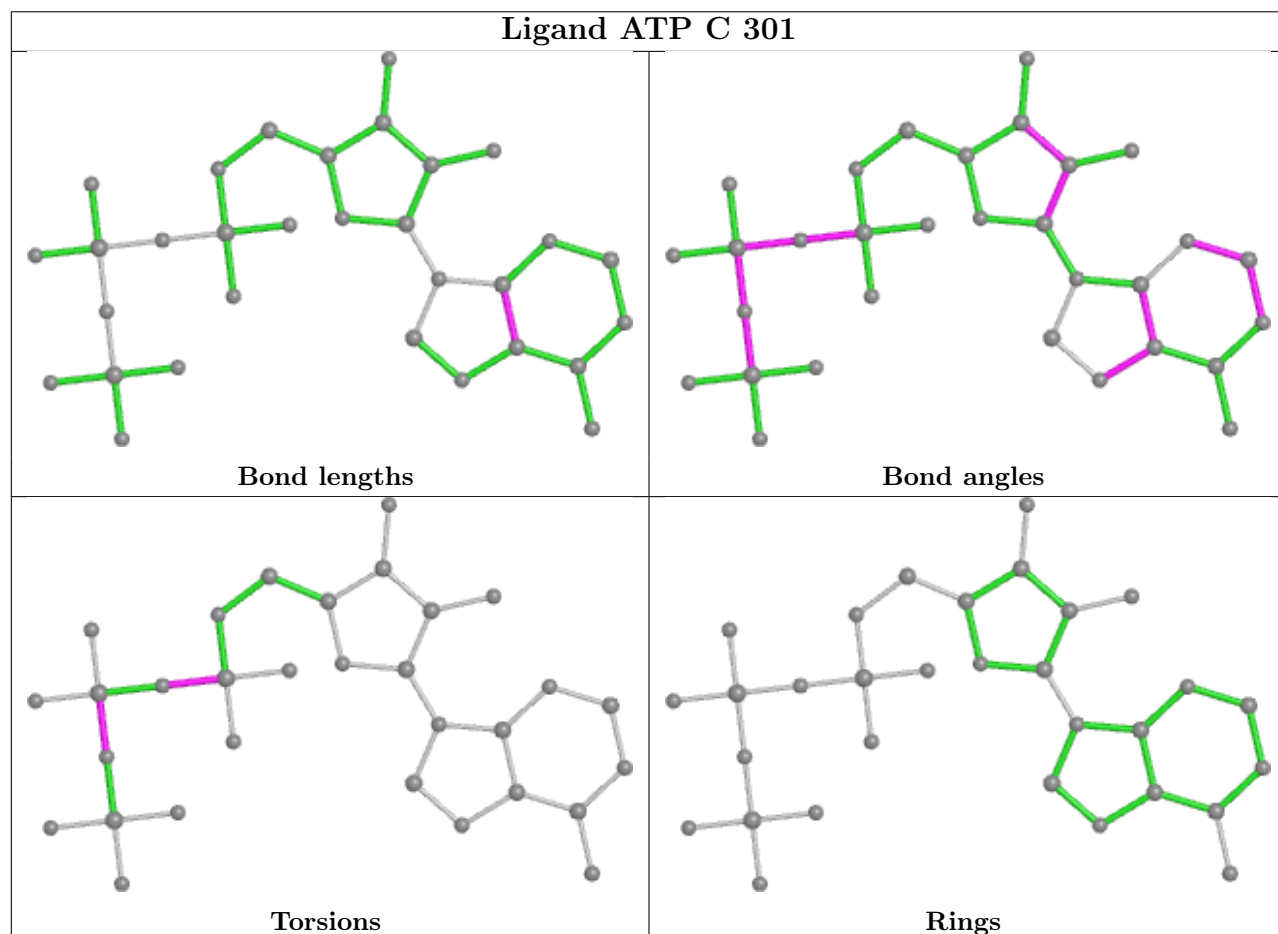
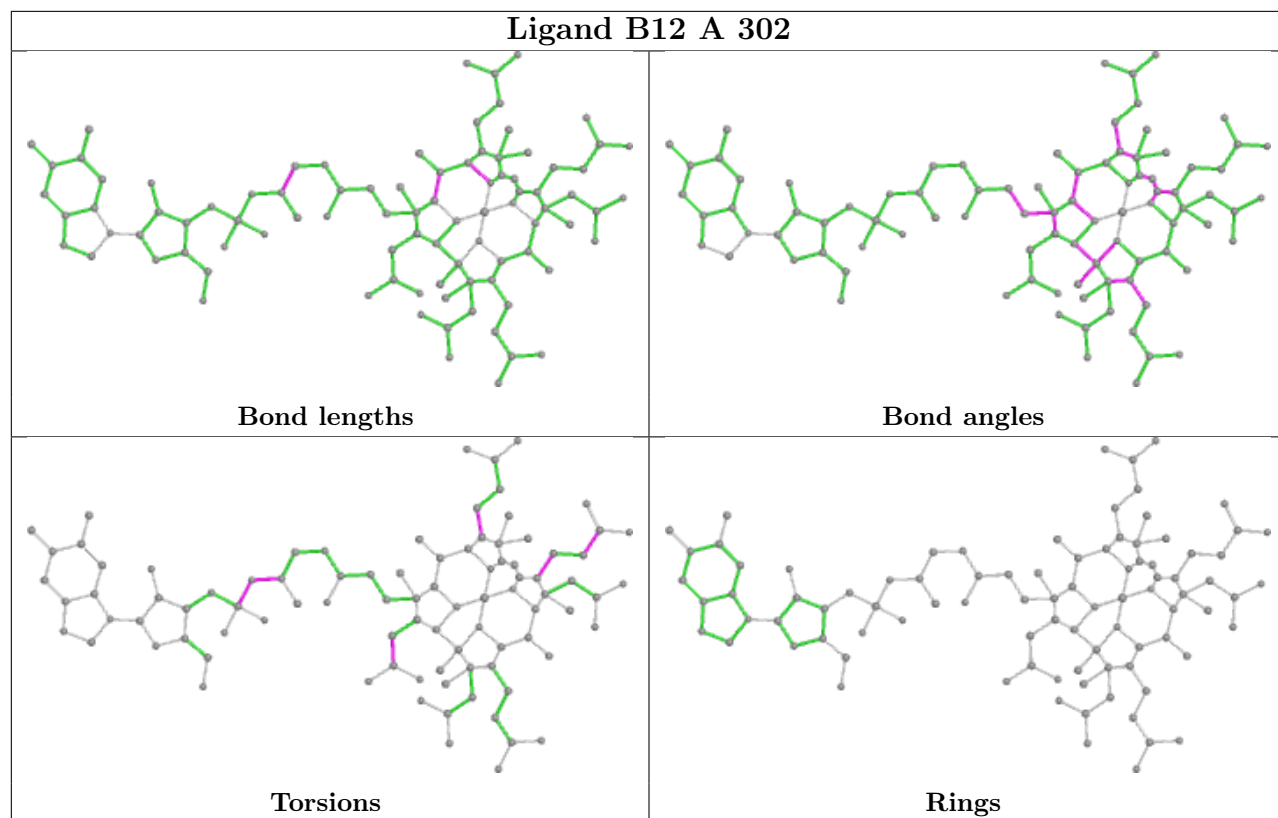
Continued from previous page...

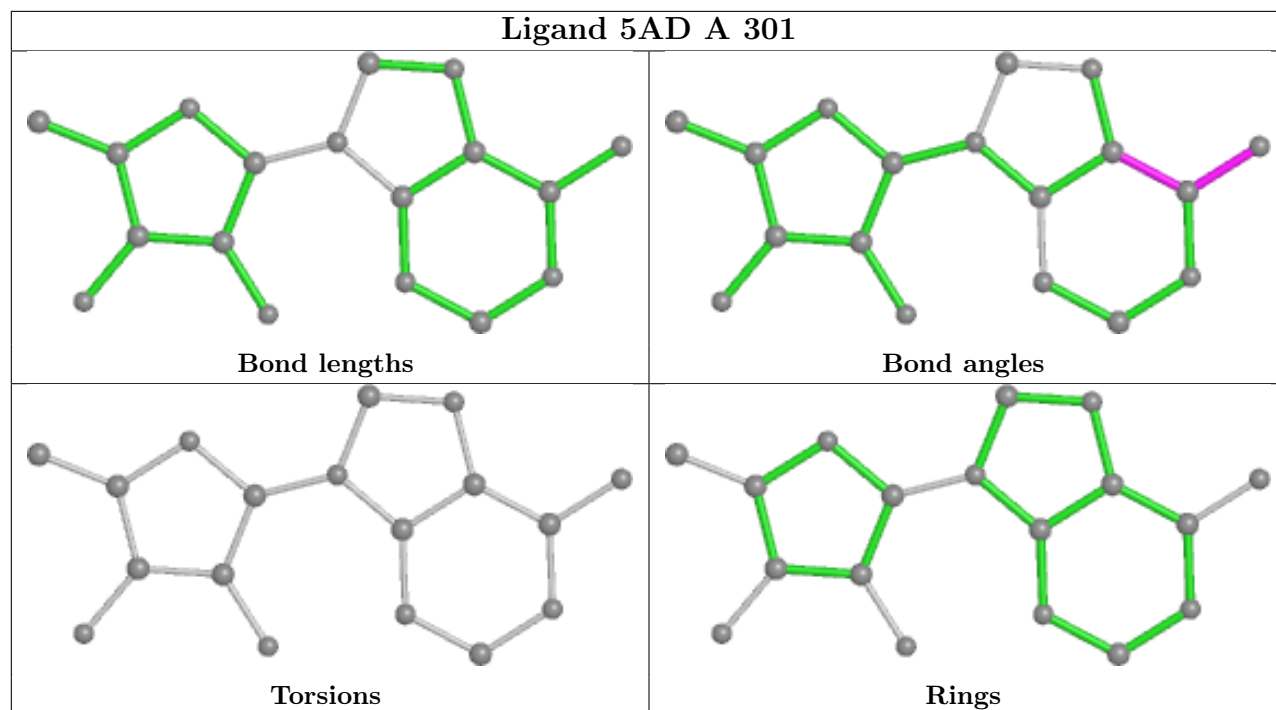
Mol	Chain	Res	Type	Clashes	Symm-Clashes
3	A	302	B12	9	0
2	A	301	5AD	2	0

The following is a two-dimensional graphical depiction of Mogul quality analysis of bond lengths, bond angles, torsion angles, and ring geometry for all instances of the Ligand of Interest. In addition, ligands with molecular weight > 250 and outliers as shown on the validation Tables will also be included. For torsion angles, if less than 5% of the Mogul distribution of torsion angles is within 10 degrees of the torsion angle in question, then that torsion angle is considered an outlier. Any bond that is central to one or more torsion angles identified as an outlier by Mogul will be highlighted in the graph. For rings, the root-mean-square deviation (RMSD) between the ring in question and similar rings identified by Mogul is calculated over all ring torsion angles. If the average RMSD is greater than 60 degrees and the minimal RMSD between the ring in question and any Mogul-identified rings is also greater than 60 degrees, then that ring is considered an outlier. The outliers are highlighted in purple. The color gray indicates Mogul did not find sufficient equivalents in the CSD to analyse the geometry.









5.7 Other polymers [i](#)

There are no such residues in this entry.

5.8 Polymer linkage issues [i](#)

There are no chain breaks in this entry.

6 Fit of model and data

6.1 Protein, DNA and RNA chains

In the following table, the column labelled ‘#RSRZ > 2’ contains the number (and percentage) of RSRZ outliers, followed by percent RSRZ outliers for the chain as percentile scores relative to all X-ray entries and entries of similar resolution. The OWAB column contains the minimum, median, 95th percentile and maximum values of the occupancy-weighted average B-factor per residue. The column labelled ‘Q < 0.9’ lists the number of (and percentage) of residues with an average occupancy less than 0.9.

Mol	Chain	Analysed	<RSRZ>	#RSRZ>2	OWAB(Å ²)	Q<0.9
1	A	151/196 (77%)	0.09	10 (6%) 18 17	47, 70, 113, 132	0
1	B	183/196 (93%)	-0.03	8 (4%) 34 33	45, 60, 110, 149	0
1	C	181/196 (92%)	-0.09	6 (3%) 46 45	45, 60, 103, 139	0
All	All	515/588 (87%)	-0.01	24 (4%) 31 30	45, 63, 111, 149	0

All (24) RSRZ outliers are listed below:

Mol	Chain	Res	Type	RSRZ
1	C	104	THR	5.3
1	A	142	TYR	5.2
1	C	241	ASN	5.1
1	A	239	MET	4.4
1	A	143	THR	4.4
1	B	142	TYR	4.3
1	B	238	TYR	4.0
1	A	234	GLN	3.9
1	B	143	THR	3.7
1	B	138	ALA	3.5
1	A	105	GLU	3.2
1	C	62	THR	3.1
1	C	64	ASP	3.0
1	A	107	GLY	2.9
1	A	104	THR	2.7
1	B	139	HIS	2.6
1	A	106	LYS	2.6
1	A	141	LYS	2.5
1	A	235	GLU	2.5
1	B	137	GLU	2.4
1	C	108	HIS	2.4
1	B	239	MET	2.3
1	B	169	ALA	2.2

Continued on next page...

Continued from previous page...

Mol	Chain	Res	Type	RSRZ
1	C	106	LYS	2.2

6.2 Non-standard residues in protein, DNA, RNA chains [i](#)

There are no non-standard protein/DNA/RNA residues in this entry.

6.3 Carbohydrates [i](#)

There are no monosaccharides in this entry.

6.4 Ligands [i](#)

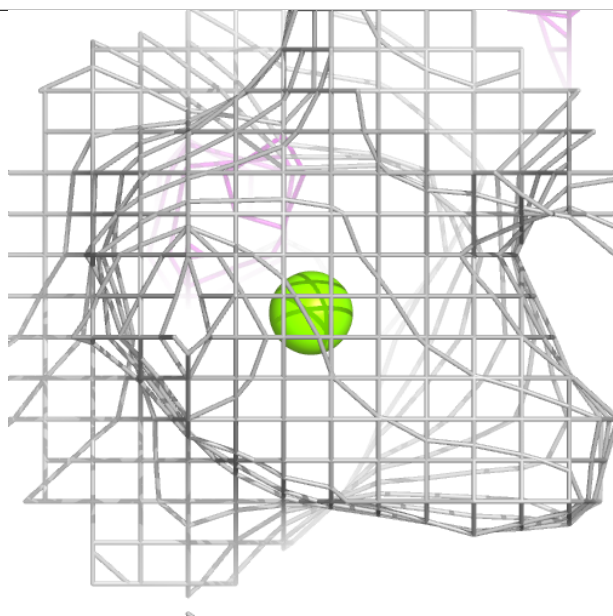
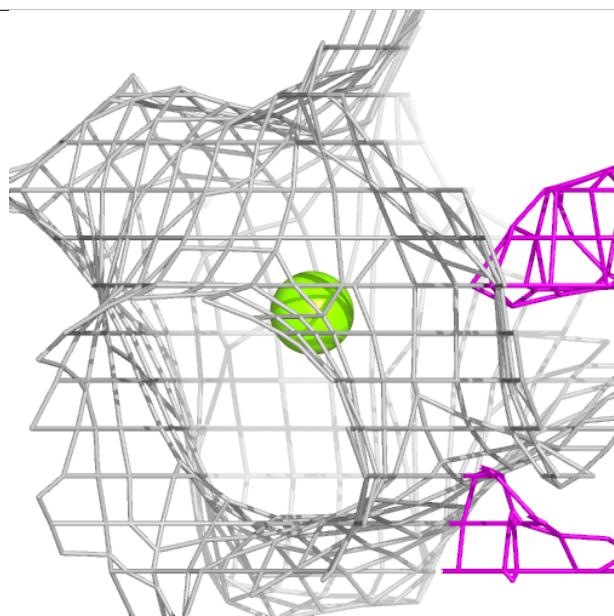
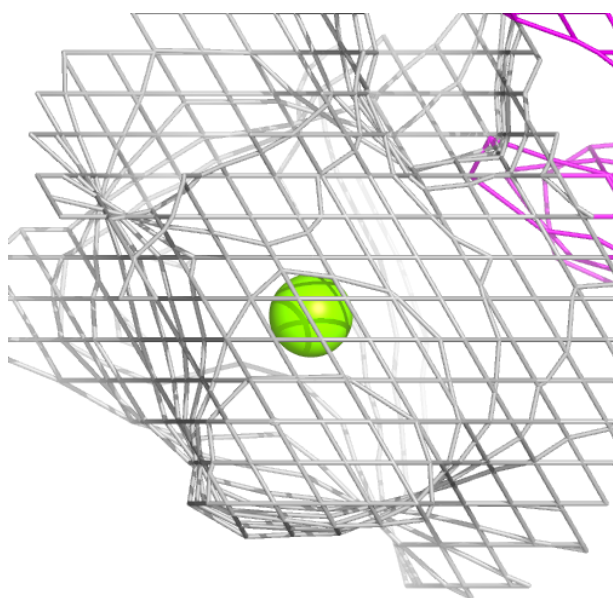
In the following table, the Atoms column lists the number of modelled atoms in the group and the number defined in the chemical component dictionary. The B-factors column lists the minimum, median, 95th percentile and maximum values of B factors of atoms in the group. The column labelled 'Q< 0.9' lists the number of atoms with occupancy less than 0.9.

Mol	Type	Chain	Res	Atoms	RSCC	RSR	B-factors(Å ²)	Q<0.9
5	MG	A	304	1/1	0.71	0.09	99,99,99,99	0
4	SO4	C	305	5/5	0.74	0.22	140,142,153,163	0
4	SO4	C	304	5/5	0.78	0.26	145,147,156,164	0
3	B12	B	302	91/91	0.83	0.24	68,96,108,120	91
6	3PO	A	305	13/13	0.85	0.19	83,93,119,128	13
2	5AD	B	301	18/18	0.87	0.20	58,92,102,103	18
5	MG	C	306	1/1	0.89	0.10	48,48,48,48	0
5	MG	C	302	1/1	0.89	0.15	66,66,66,66	0
3	B12	A	302	91/91	0.92	0.14	55,72,84,95	91
2	5AD	A	301	18/18	0.95	0.12	48,64,76,78	0
4	SO4	A	303	5/5	0.95	0.33	88,92,112,126	0
4	SO4	C	303	5/5	0.96	0.13	92,92,110,111	0
4	SO4	B	303	5/5	0.97	0.12	80,85,96,97	0
7	ATP	C	301	31/31	0.97	0.15	39,46,56,59	0

The following is a graphical depiction of the model fit to experimental electron density of all instances of the Ligand of Interest. In addition, ligands with molecular weight > 250 and outliers as shown on the geometry validation Tables will also be included. Each fit is shown from different orientation to approximate a three-dimensional view.

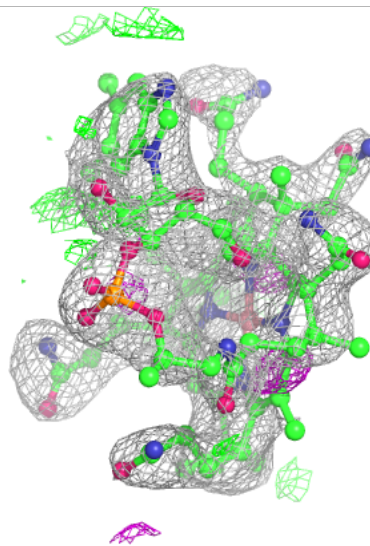
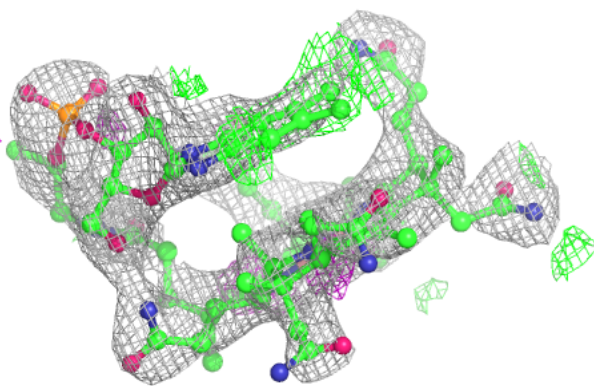
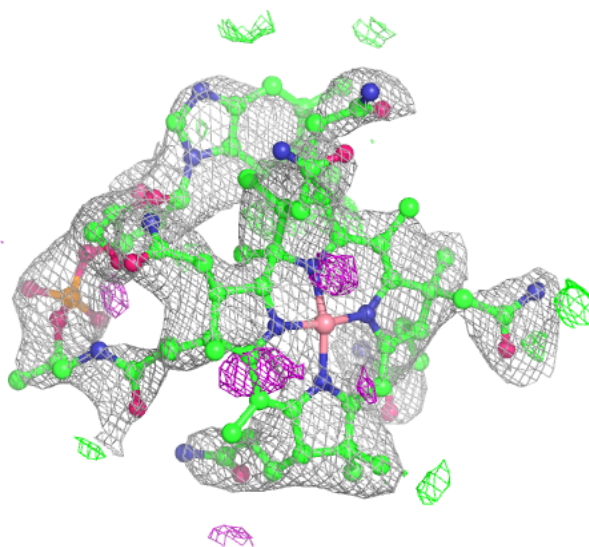
Electron density around MG A 304:

$2mF_o-DF_c$ (at 0.7 rmsd) in gray
 mF_o-DF_c (at 3 rmsd) in purple (negative)
and green (positive)



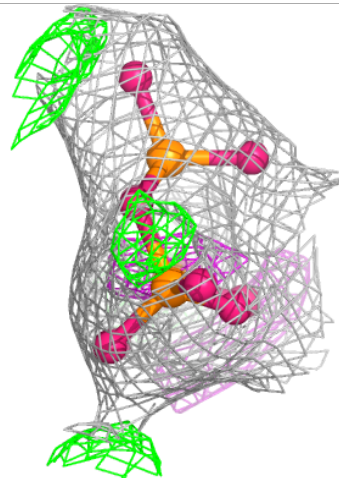
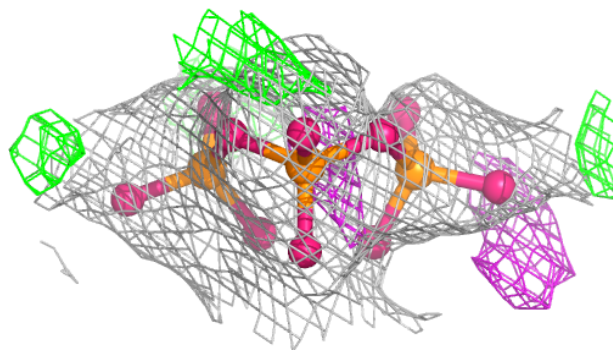
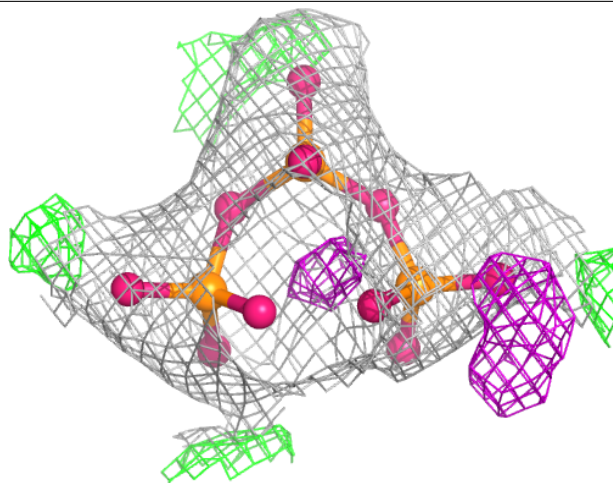
Electron density around B12 B 302:

$2mF_o-DF_c$ (at 0.7 rmsd) in gray
 mF_o-DF_c (at 3 rmsd) in purple (negative)
and green (positive)



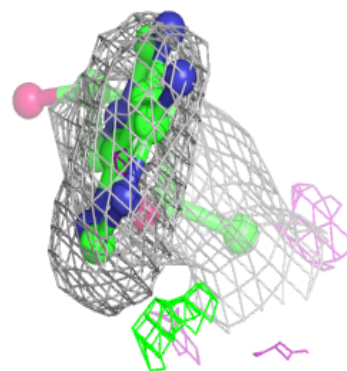
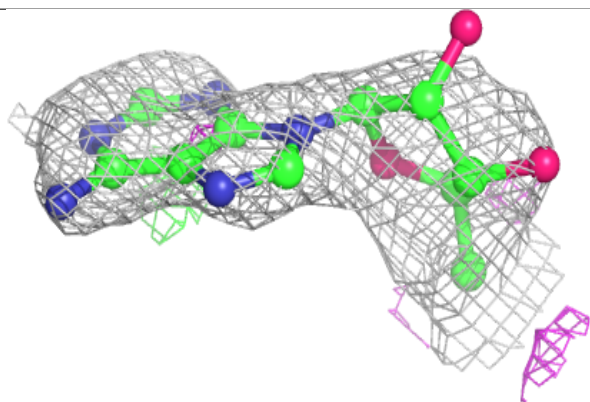
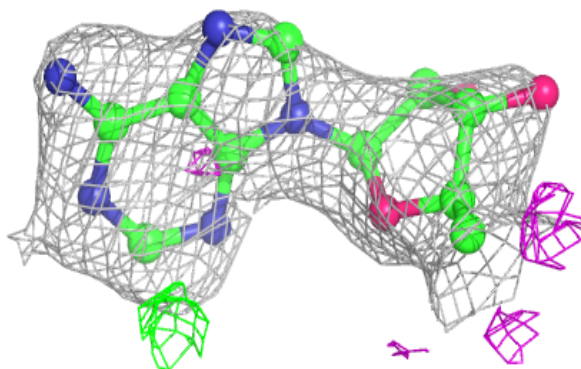
Electron density around 3PO A 305:

$2mF_o-DF_c$ (at 0.7 rmsd) in gray
 mF_o-DF_c (at 3 rmsd) in purple (negative)
and green (positive)



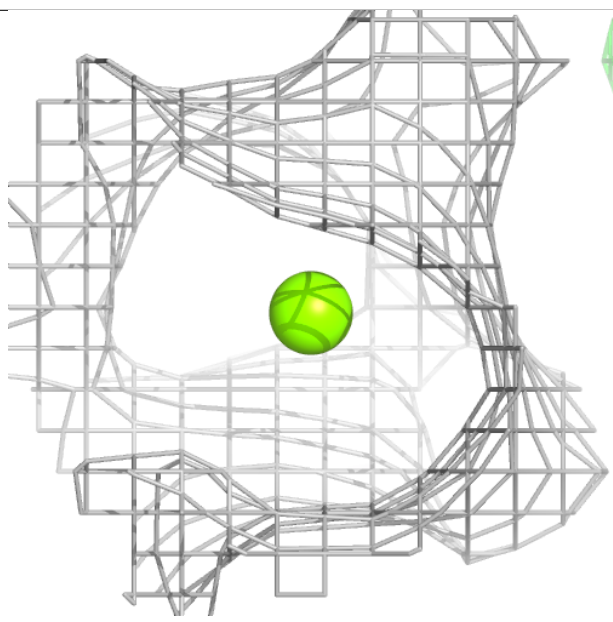
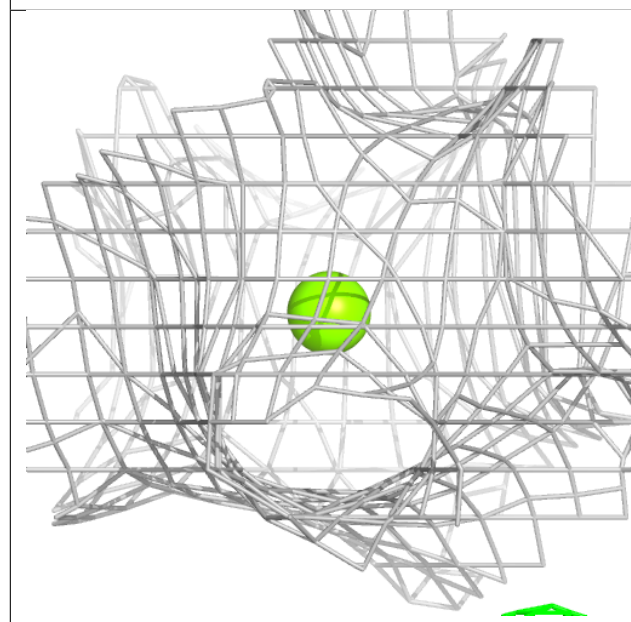
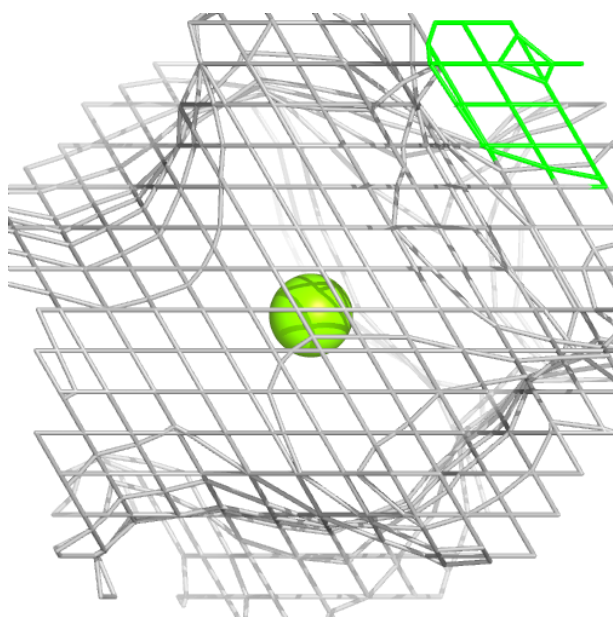
Electron density around 5AD B 301:

$2mF_o-DF_c$ (at 0.7 rmsd) in gray
 mF_o-DF_c (at 3 rmsd) in purple (negative)
and green (positive)



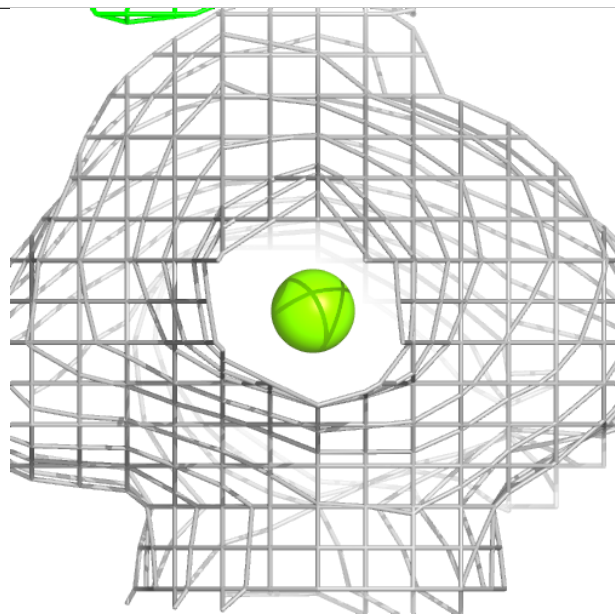
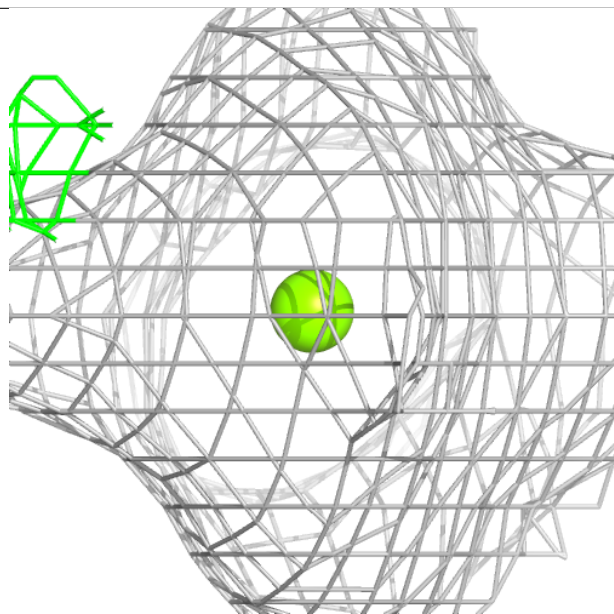
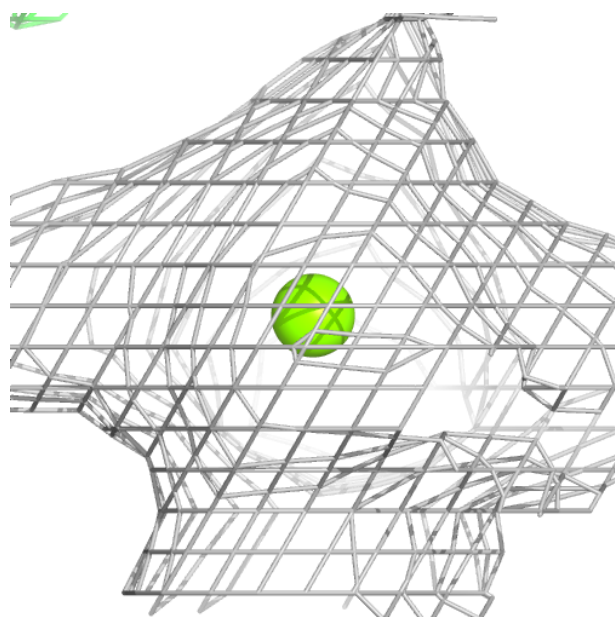
Electron density around MG C 306:

$2mF_o-DF_c$ (at 0.7 rmsd) in gray
 mF_o-DF_c (at 3 rmsd) in purple (negative)
and green (positive)



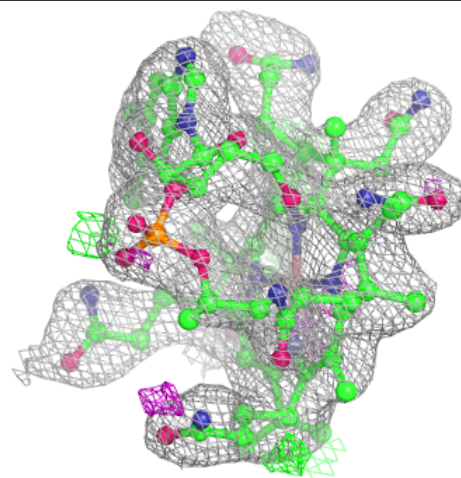
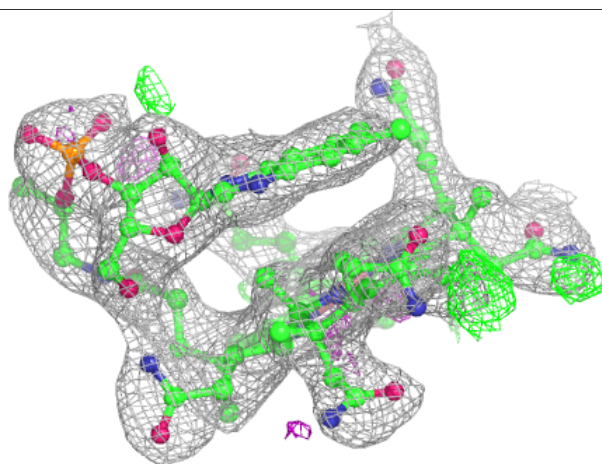
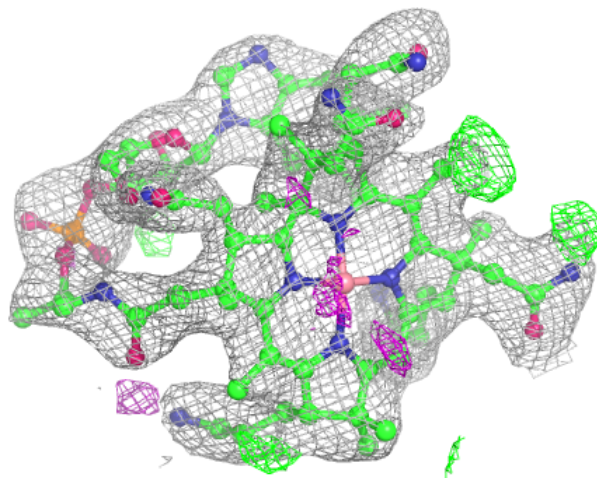
Electron density around MG C 302:

$2mF_o-DF_c$ (at 0.7 rmsd) in gray
 mF_o-DF_c (at 3 rmsd) in purple (negative)
and green (positive)



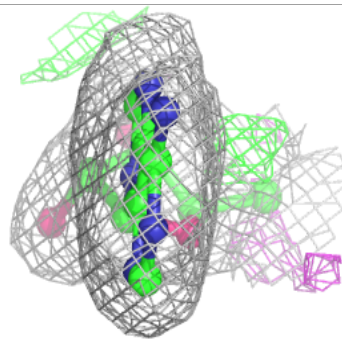
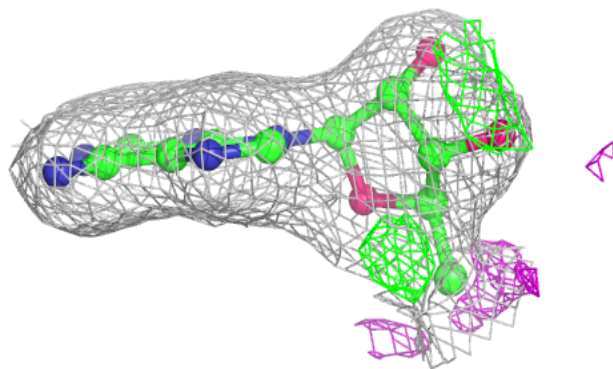
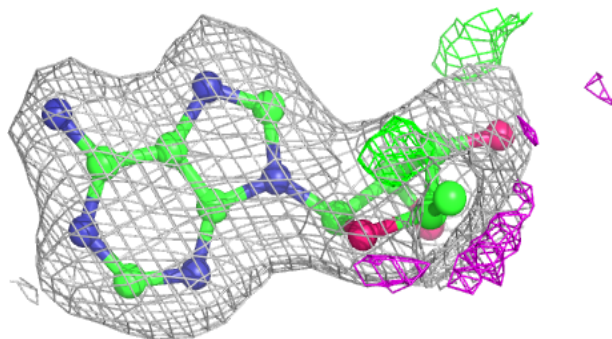
Electron density around B12 A 302:

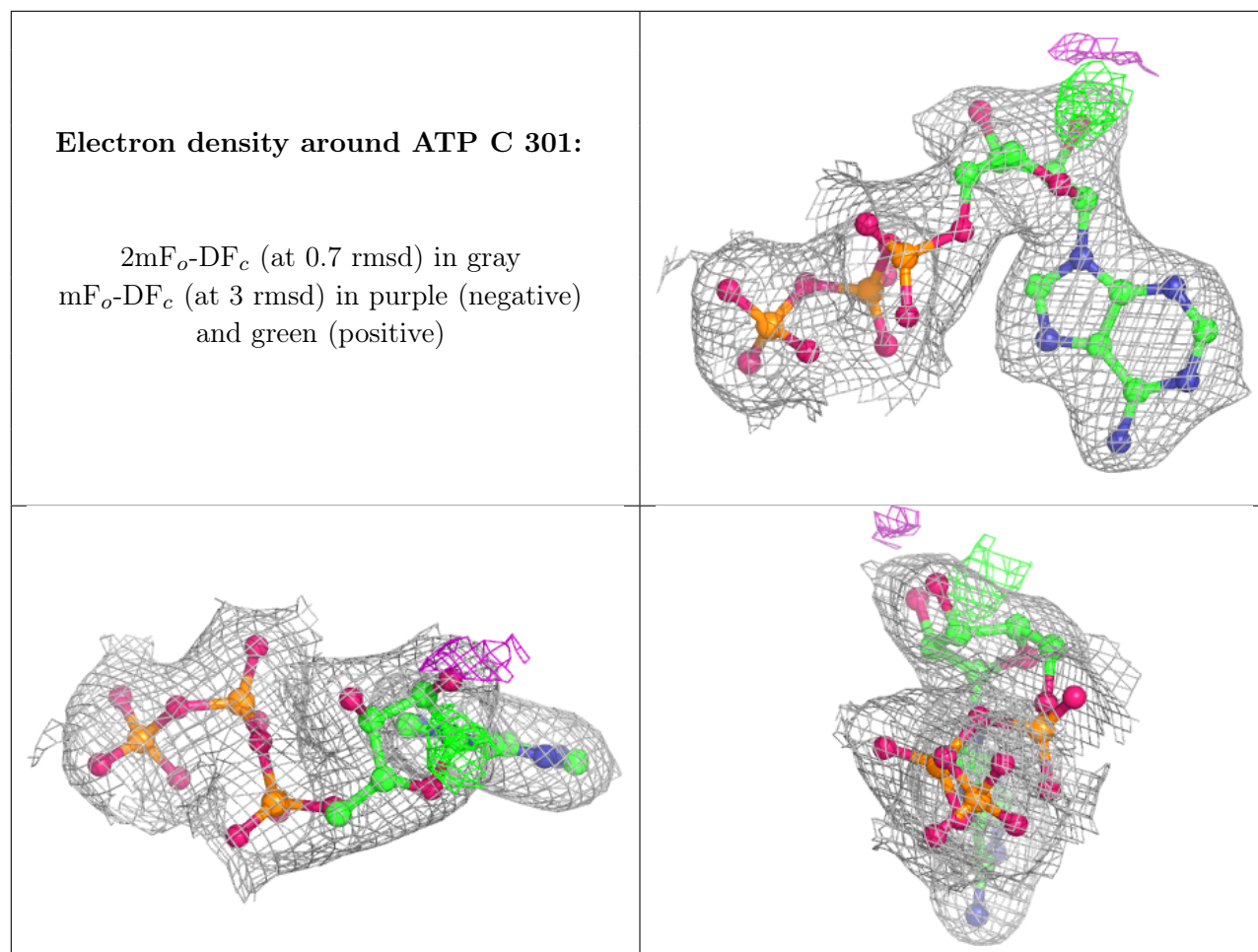
$2mF_o-DF_c$ (at 0.7 rmsd) in gray
 mF_o-DF_c (at 3 rmsd) in purple (negative)
and green (positive)



Electron density around 5AD A 301:

$2mF_o-DF_c$ (at 0.7 rmsd) in gray
 mF_o-DF_c (at 3 rmsd) in purple (negative)
and green (positive)





6.5 Other polymers [i](#)

There are no such residues in this entry.