



# Full wwPDB X-ray Structure Validation Report ⓘ

Sep 25, 2023 – 06:43 PM EDT

PDB ID : 6BL2  
Title : Novel Modes of Inhibition of Wild-Type IDH1: Direct Covalent Modification of His315 with Cmpd15  
Authors : Jakob, C.G.; Qiu, W.  
Deposited on : 2017-11-09  
Resolution : 1.92 Å(reported)

This is a Full wwPDB X-ray Structure Validation Report for a publicly released PDB entry.

We welcome your comments at [validation@mail.wwpdb.org](mailto:validation@mail.wwpdb.org)

A user guide is available at

<https://www.wwpdb.org/validation/2017/XrayValidationReportHelp>

with specific help available everywhere you see the ⓘ symbol.

The types of validation reports are described at

<http://www.wwpdb.org/validation/2017/FAQs#types>.

---

The following versions of software and data (see [references ⓘ](#)) were used in the production of this report:

MolProbity : 4.02b-467  
Mogul : 1.8.5 (274361), CSD as541be (2020)  
Xtrriage (Phenix) : 1.13  
EDS : 2.35.1  
buster-report : 1.1.7 (2018)  
Percentile statistics : 20191225.v01 (using entries in the PDB archive December 25th 2019)  
Refmac : 5.8.0158  
CCP4 : 7.0.044 (Gargrove)  
Ideal geometry (proteins) : Engh & Huber (2001)  
Ideal geometry (DNA, RNA) : Parkinson et al. (1996)  
Validation Pipeline (wwPDB-VP) : 2.35.1

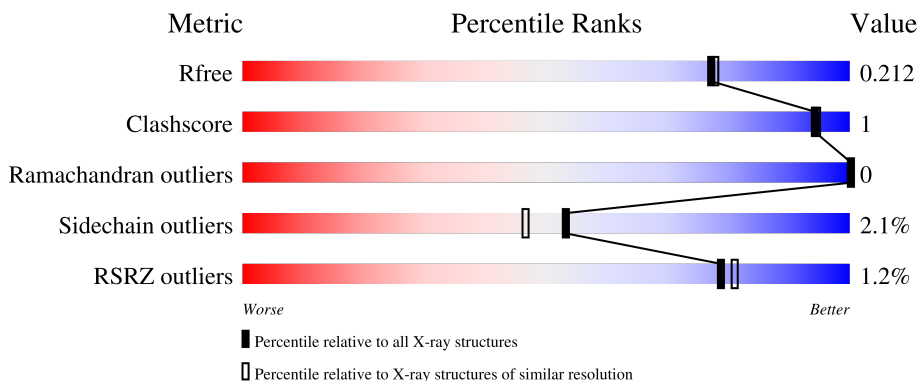
# 1 Overall quality at a glance

The following experimental techniques were used to determine the structure:

*X-RAY DIFFRACTION*

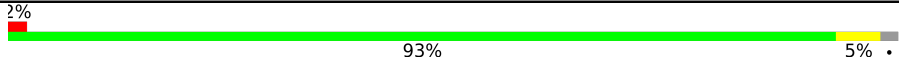
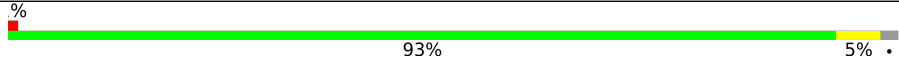
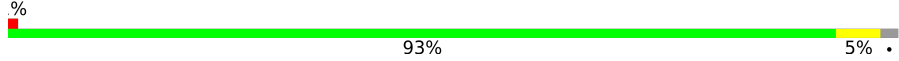
The reported resolution of this entry is 1.92 Å.

Percentile scores (ranging between 0-100) for global validation metrics of the entry are shown in the following graphic. The table shows the number of entries on which the scores are based.



Metric	Whole archive (#Entries)	Similar resolution (#Entries, resolution range(Å))
$R_{free}$	130704	7937 (1.94-1.90)
Clashscore	141614	8644 (1.94-1.90)
Ramachandran outliers	138981	8530 (1.94-1.90)
Sidechain outliers	138945	8530 (1.94-1.90)
RSRZ outliers	127900	7793 (1.94-1.90)

The table below summarises the geometric issues observed across the polymeric chains and their fit to the electron density. The red, orange, yellow and green segments of the lower bar indicate the fraction of residues that contain outliers for  $\geq 3$ , 2, 1 and 0 types of geometric quality criteria respectively. A grey segment represents the fraction of residues that are not modelled. The numeric value for each fraction is indicated below the corresponding segment, with a dot representing fractions  $\leq 5\%$ . The upper red bar (where present) indicates the fraction of residues that have poor fit to the electron density. The numeric value is given above the bar.

Mol	Chain	Length	Quality of chain
1	A	425	 2% 93% 5%
1	B	425	 0% 93% 5%
1	C	425	 0% 93% 5%

## 2 Entry composition i

There are 5 unique types of molecules in this entry. The entry contains 10885 atoms, of which 0 are hydrogens and 0 are deuteriums.

In the tables below, the ZeroOcc column contains the number of atoms modelled with zero occupancy, the AltConf column contains the number of residues with at least one atom in alternate conformation and the Trace column contains the number of residues modelled with at most 2 atoms.

- Molecule 1 is a protein called Isocitrate dehydrogenase [NADP] cytoplasmic.

Mol	Chain	Residues	Atoms					ZeroOcc	AltConf	Trace
			Total	C	N	O	S			
1	A	416	3292	2093	559	622	18	0	0	0
1	B	416	3299	2097	560	624	18	0	0	0
1	C	416	3292	2093	559	622	18	0	0	0

There are 33 discrepancies between the modelled and reference sequences:

Chain	Residue	Modelled	Actual	Comment	Reference
A	415	SER	-	expression tag	UNP O75874
A	416	LEU	-	expression tag	UNP O75874
A	417	GLU	-	expression tag	UNP O75874
A	418	HIS	-	expression tag	UNP O75874
A	419	HIS	-	expression tag	UNP O75874
A	420	HIS	-	expression tag	UNP O75874
A	421	HIS	-	expression tag	UNP O75874
A	422	HIS	-	expression tag	UNP O75874
A	423	HIS	-	expression tag	UNP O75874
A	424	HIS	-	expression tag	UNP O75874
A	425	HIS	-	expression tag	UNP O75874
B	415	SER	-	expression tag	UNP O75874
B	416	LEU	-	expression tag	UNP O75874
B	417	GLU	-	expression tag	UNP O75874
B	418	HIS	-	expression tag	UNP O75874
B	419	HIS	-	expression tag	UNP O75874
B	420	HIS	-	expression tag	UNP O75874
B	421	HIS	-	expression tag	UNP O75874
B	422	HIS	-	expression tag	UNP O75874
B	423	HIS	-	expression tag	UNP O75874
B	424	HIS	-	expression tag	UNP O75874
B	425	HIS	-	expression tag	UNP O75874
C	415	SER	-	expression tag	UNP O75874

*Continued on next page...*

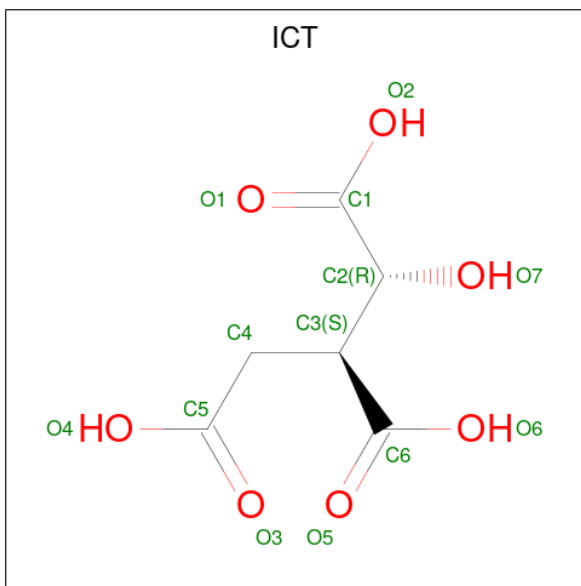
Continued from previous page...

Chain	Residue	Modelled	Actual	Comment	Reference
C	416	LEU	-	expression tag	UNP O75874
C	417	GLU	-	expression tag	UNP O75874
C	418	HIS	-	expression tag	UNP O75874
C	419	HIS	-	expression tag	UNP O75874
C	420	HIS	-	expression tag	UNP O75874
C	421	HIS	-	expression tag	UNP O75874
C	422	HIS	-	expression tag	UNP O75874
C	423	HIS	-	expression tag	UNP O75874
C	424	HIS	-	expression tag	UNP O75874
C	425	HIS	-	expression tag	UNP O75874

- Molecule 2 is CALCIUM ION (three-letter code: CA) (formula: Ca).

Mol	Chain	Residues	Atoms	ZeroOcc	AltConf
2	A	2	Total Ca 2 2	0	0
2	B	1	Total Ca 1 1	0	0

- Molecule 3 is ISOCITRIC ACID (three-letter code: ICT) (formula: C<sub>6</sub>H<sub>8</sub>O<sub>7</sub>).



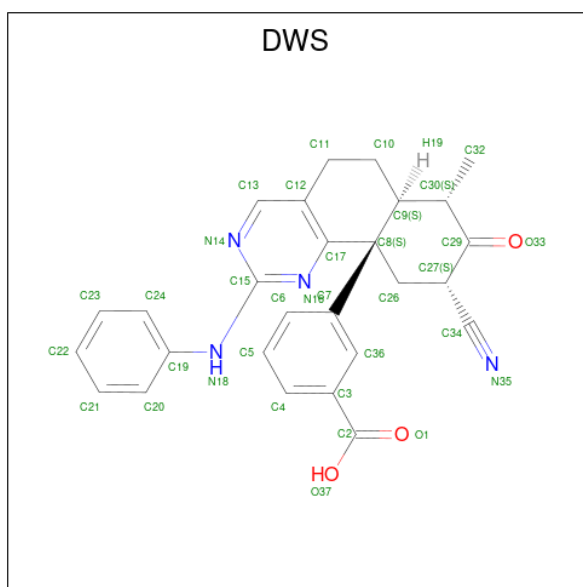
Mol	Chain	Residues	Atoms	ZeroOcc	AltConf
3	A	1	Total C O 13 6 7	0	0
3	A	1	Total C O 13 6 7	0	0

Continued on next page...

Continued from previous page...

Mol	Chain	Residues	Atoms			ZeroOcc	AltConf
3	B	1	Total	C	O	0	0
			13	6	7		

- Molecule 4 is 3-[(6aS,7S,9S,10aS)-9-cyano-7-methyl-8-oxo-2-(phenylamino)-6,6a,7,8,9,10-hexahydrobenzo[h]quinazolin-10a(5H)-yl]benzoic acid (three-letter code: DWS) (formula:  $C_{27}H_{24}N_4O_3$ ) (labeled as "Ligand of Interest" by depositor).



Mol	Chain	Residues	Atoms				ZeroOcc	AltConf
4	A	1	Total	C	N	O	0	0
			34	27	4	3		
4	B	1	Total	C	N	O	0	0
			34	27	4	3		
4	C	1	Total	C	N	O	0	0
			34	27	4	3		

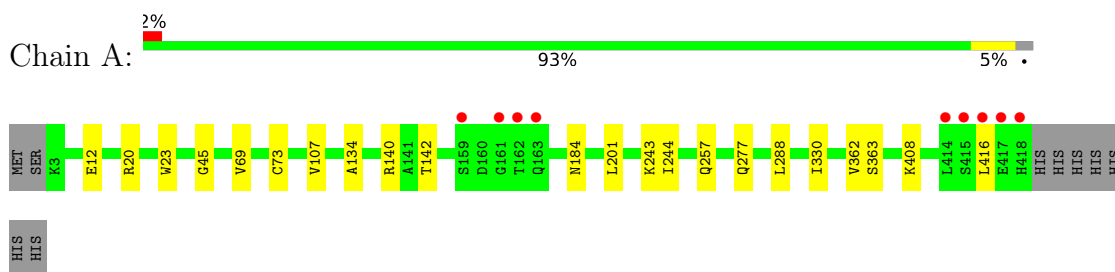
- Molecule 5 is water.

Mol	Chain	Residues	Atoms		ZeroOcc	AltConf
5	A	230	Total	O	0	0
			230	230		
5	B	331	Total	O	0	0
			331	331		
5	C	297	Total	O	0	0
			297	297		

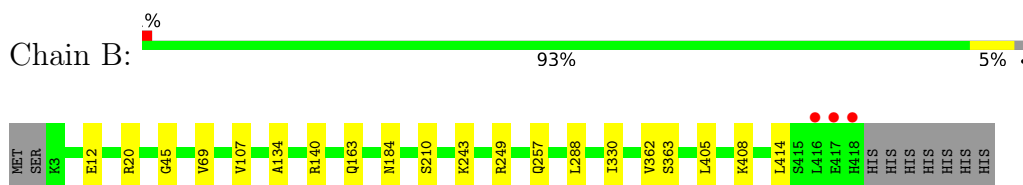
### 3 Residue-property plots [i](#)

These plots are drawn for all protein, RNA, DNA and oligosaccharide chains in the entry. The first graphic for a chain summarises the proportions of the various outlier classes displayed in the second graphic. The second graphic shows the sequence view annotated by issues in geometry and electron density. Residues are color-coded according to the number of geometric quality criteria for which they contain at least one outlier: green = 0, yellow = 1, orange = 2 and red = 3 or more. A red dot above a residue indicates a poor fit to the electron density ( $RSRZ > 2$ ). Stretches of 2 or more consecutive residues without any outlier are shown as a green connector. Residues present in the sample, but not in the model, are shown in grey.

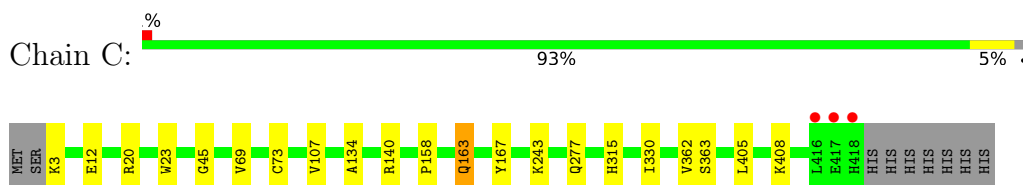
- Molecule 1: Isocitrate dehydrogenase [NADP] cytoplasmic



- Molecule 1: Isocitrate dehydrogenase [NADP] cytoplasmic



- Molecule 1: Isocitrate dehydrogenase [NADP] cytoplasmic



## 4 Data and refinement statistics

Property	Value	Source
Space group	C 2 2 21	Depositor
Cell constants a, b, c, $\alpha$ , $\beta$ , $\gamma$	95.51Å 274.89Å 116.14Å 90.00° 90.00° 90.00°	Depositor
Resolution (Å)	28.14 – 1.92 137.44 – 1.92	Depositor EDS
% Data completeness (in resolution range)	100.0 (28.14-1.92) 99.9 (137.44-1.92)	Depositor EDS
$R_{merge}$	0.10	Depositor
$R_{sym}$	(Not available)	Depositor
$\langle I/\sigma(I) \rangle$ <sup>1</sup>	2.43 (at 1.92Å)	Xtrriage
Refinement program	BUSTER 2.11.7	Depositor
R, $R_{free}$	0.180 , 0.211 0.183 , 0.212	Depositor DCC
$R_{free}$ test set	5851 reflections (5.04%)	wwPDB-VP
Wilson B-factor (Å <sup>2</sup> )	28.0	Xtrriage
Anisotropy	0.691	Xtrriage
Bulk solvent $k_{sol}$ (e/Å <sup>3</sup> ), $B_{sol}$ (Å <sup>2</sup> )	0.35 , 53.8	EDS
L-test for twinning <sup>2</sup>	$\langle  L  \rangle = 0.48$ , $\langle L^2 \rangle = 0.31$	Xtrriage
Estimated twinning fraction	No twinning to report.	Xtrriage
$F_o, F_c$ correlation	0.96	EDS
Total number of atoms	10885	wwPDB-VP
Average B, all atoms (Å <sup>2</sup> )	36.0	wwPDB-VP

Xtrriage's analysis on translational NCS is as follows: *The largest off-origin peak in the Patterson function is 2.95% of the height of the origin peak. No significant pseudotranslation is detected.*

<sup>1</sup>Intensities estimated from amplitudes.

<sup>2</sup>Theoretical values of  $\langle |L| \rangle$ ,  $\langle L^2 \rangle$  for acentric reflections are 0.5, 0.333 respectively for untwinned datasets, and 0.375, 0.2 for perfectly twinned datasets.

## 5 Model quality [i](#)

### 5.1 Standard geometry [i](#)

Bond lengths and bond angles in the following residue types are not validated in this section: ICT, DWS, CA

The Z score for a bond length (or angle) is the number of standard deviations the observed value is removed from the expected value. A bond length (or angle) with  $|Z| > 5$  is considered an outlier worth inspection. RMSZ is the root-mean-square of all Z scores of the bond lengths (or angles).

Mol	Chain	Bond lengths		Bond angles	
		RMSZ	# Z  >5	RMSZ	# Z  >5
1	A	0.48	0/3361	0.62	0/4533
1	B	0.51	0/3368	0.62	0/4541
1	C	0.50	0/3361	0.61	0/4533
All	All	0.50	0/10090	0.62	0/13607

There are no bond length outliers.

There are no bond angle outliers.

There are no chirality outliers.

There are no planarity outliers.

### 5.2 Too-close contacts [i](#)

In the following table, the Non-H and H(model) columns list the number of non-hydrogen atoms and hydrogen atoms in the chain respectively. The H(added) column lists the number of hydrogen atoms added and optimized by MolProbity. The Clashes column lists the number of clashes within the asymmetric unit, whereas Symm-Clashes lists symmetry-related clashes.

Mol	Chain	Non-H	H(model)	H(added)	Clashes	Symm-Clashes
1	A	3292	0	3255	8	0
1	B	3299	0	3268	8	0
1	C	3292	0	3255	10	0
2	A	2	0	0	0	0
2	B	1	0	0	0	0
3	A	26	0	8	0	0
3	B	13	0	4	0	0
4	A	34	0	0	0	0
4	B	34	0	0	1	0
4	C	34	0	0	2	0

*Continued on next page...*



*Continued from previous page...*

Mol	Chain	Non-H	H(model)	H(added)	Clashes	Symm-Clashes
5	A	230	0	0	0	0
5	B	331	0	0	0	0
5	C	297	0	0	0	0
All	All	10885	0	9790	26	0

The all-atom clashscore is defined as the number of clashes found per 1000 atoms (including hydrogen atoms). The all-atom clashscore for this structure is 1.

All (26) close contacts within the same asymmetric unit are listed below, sorted by their clash magnitude.

Atom-1	Atom-2	Interatomic distance (Å)	Clash overlap (Å)
1:B:249:ARG:HE	1:B:257:GLN:HE22	1.09	0.99
1:A:142:THR:HG21	1:C:167:TYR:HB3	1.84	0.60
1:A:277:GLN:HE22	1:C:277:GLN:HE22	1.50	0.58
1:B:249:ARG:HE	1:B:257:GLN:NE2	1.93	0.55
1:B:107:VAL:HG23	1:B:134:ALA:HB2	1.94	0.49
1:C:107:VAL:HG23	1:C:134:ALA:HB2	1.96	0.47
4:C:501:DWS:C27	4:C:501:DWS:C6	2.93	0.46
1:B:362:VAL:HG23	1:B:408:LYS:HD2	1.98	0.46
1:C:20:ARG:HH21	1:C:45:GLY:HA3	1.81	0.45
1:A:20:ARG:HH21	1:A:45:GLY:HA3	1.81	0.45
1:A:107:VAL:HG23	1:A:134:ALA:HB2	1.98	0.45
1:A:362:VAL:HG23	1:A:408:LYS:HD2	1.98	0.45
1:B:20:ARG:HH21	1:B:45:GLY:HA3	1.81	0.45
1:C:362:VAL:HG23	1:C:408:LYS:HD2	2.00	0.44
1:C:330:ILE:HD12	1:C:363:SER:HB3	2.00	0.43
1:A:330:ILE:HD12	1:A:363:SER:HB3	2.01	0.43
4:B:503:DWS:C27	4:B:503:DWS:C6	2.97	0.42
1:A:23:TRP:CD2	1:A:73:CYS:HB2	2.55	0.41
1:C:23:TRP:CD2	1:C:73:CYS:HB2	2.55	0.41
1:B:330:ILE:HD12	1:B:363:SER:HB3	2.02	0.41
1:C:158:PRO:HG2	1:C:163:GLN:HG3	2.03	0.41
1:B:362:VAL:HG21	1:B:405:LEU:HA	2.02	0.41
1:C:315:HIS:CE1	4:C:501:DWS:N16	2.89	0.41
1:B:210:SER:HA	1:B:249:ARG:O	2.21	0.41
1:A:201:LEU:HD23	1:A:244:ILE:HD11	2.04	0.40
1:C:362:VAL:HG21	1:C:405:LEU:HA	2.04	0.40

There are no symmetry-related clashes.

## 5.3 Torsion angles [i](#)

### 5.3.1 Protein backbone [i](#)

In the following table, the Percentiles column shows the percent Ramachandran outliers of the chain as a percentile score with respect to all X-ray entries followed by that with respect to entries of similar resolution.

The Analysed column shows the number of residues for which the backbone conformation was analysed, and the total number of residues.

Mol	Chain	Analysed	Favoured	Allowed	Outliers	Percentiles	
1	A	414/425 (97%)	399 (96%)	15 (4%)	0	100	100
1	B	414/425 (97%)	403 (97%)	11 (3%)	0	100	100
1	C	414/425 (97%)	403 (97%)	11 (3%)	0	100	100
All	All	1242/1275 (97%)	1205 (97%)	37 (3%)	0	100	100

There are no Ramachandran outliers to report.

### 5.3.2 Protein sidechains [i](#)

In the following table, the Percentiles column shows the percent sidechain outliers of the chain as a percentile score with respect to all X-ray entries followed by that with respect to entries of similar resolution.

The Analysed column shows the number of residues for which the sidechain conformation was analysed, and the total number of residues.

Mol	Chain	Analysed	Rotameric	Outliers	Percentiles	
1	A	350/361 (97%)	342 (98%)	8 (2%)	50	43
1	B	352/361 (98%)	344 (98%)	8 (2%)	50	43
1	C	350/361 (97%)	344 (98%)	6 (2%)	60	55
All	All	1052/1083 (97%)	1030 (98%)	22 (2%)	53	46

All (22) residues with a non-rotameric sidechain are listed below:

Mol	Chain	Res	Type
1	A	12	GLU
1	A	69	VAL
1	A	140	ARG
1	A	184	ASN
1	A	243	LYS

*Continued on next page...*

*Continued from previous page...*

Mol	Chain	Res	Type
1	A	257	GLN
1	A	288	LEU
1	A	416	LEU
1	B	12	GLU
1	B	69	VAL
1	B	140	ARG
1	B	163	GLN
1	B	184	ASN
1	B	243	LYS
1	B	288	LEU
1	B	414	LEU
1	C	3	LYS
1	C	12	GLU
1	C	69	VAL
1	C	140	ARG
1	C	163	GLN
1	C	243	LYS

Sometimes sidechains can be flipped to improve hydrogen bonding and reduce clashes. All (12) such sidechains are listed below:

Mol	Chain	Res	Type
1	A	14	GLN
1	A	185	GLN
1	A	277	GLN
1	A	385	ASN
1	B	14	GLN
1	B	163	GLN
1	B	257	GLN
1	B	385	ASN
1	C	14	GLN
1	C	163	GLN
1	C	185	GLN
1	C	385	ASN

### 5.3.3 RNA [i](#)

There are no RNA molecules in this entry.

## 5.4 Non-standard residues in protein, DNA, RNA chains [i](#)

There are no non-standard protein/DNA/RNA residues in this entry.

## 5.5 Carbohydrates [i](#)

There are no monosaccharides in this entry.

## 5.6 Ligand geometry [i](#)

Of 9 ligands modelled in this entry, 3 are monoatomic - leaving 6 for Mogul analysis.

In the following table, the Counts columns list the number of bonds (or angles) for which Mogul statistics could be retrieved, the number of bonds (or angles) that are observed in the model and the number of bonds (or angles) that are defined in the Chemical Component Dictionary. The Link column lists molecule types, if any, to which the group is linked. The Z score for a bond length (or angle) is the number of standard deviations the observed value is removed from the expected value. A bond length (or angle) with  $|Z| > 2$  is considered an outlier worth inspection. RMSZ is the root-mean-square of all Z scores of the bond lengths (or angles).

Mol	Type	Chain	Res	Link	Bond lengths			Bond angles		
					Counts	RMSZ	# Z  > 2	Counts	RMSZ	# Z  > 2
3	ICT	B	502	2	12,12,12	1.12	0	13,16,16	1.58	3 (23%)
3	ICT	A	505	2	12,12,12	1.13	1 (8%)	13,16,16	1.66	4 (30%)
4	DWS	A	504	1	35,38,38	0.74	1 (2%)	44,56,56	1.70	9 (20%)
4	DWS	B	503	1	35,38,38	1.58	5 (14%)	44,56,56	1.69	5 (11%)
4	DWS	C	501	1	35,38,38	1.74	8 (22%)	44,56,56	1.68	7 (15%)
3	ICT	A	502	2	12,12,12	1.23	1 (8%)	13,16,16	1.58	3 (23%)

In the following table, the Chirals column lists the number of chiral outliers, the number of chiral centers analysed, the number of these observed in the model and the number defined in the Chemical Component Dictionary. Similar counts are reported in the Torsion and Rings columns. '-' means no outliers of that kind were identified.

Mol	Type	Chain	Res	Link	Chirals	Torsions	Rings
3	ICT	B	502	2	-	1/16/16/16	-
3	ICT	A	505	2	-	2/16/16/16	-
4	DWS	A	504	1	-	4/14/50/50	0/5/5/5
4	DWS	B	503	1	-	2/14/50/50	0/5/5/5
4	DWS	C	501	1	-	3/14/50/50	0/5/5/5
3	ICT	A	502	2	-	2/16/16/16	-

All (16) bond length outliers are listed below:

Mol	Chain	Res	Type	Atoms	Z	Observed(Å)	Ideal(Å)
4	C	501	DWS	C26-C8	-5.26	1.50	1.55
4	C	501	DWS	C27-C34	-4.22	1.43	1.47
4	B	503	DWS	C26-C8	-4.04	1.51	1.55
4	B	503	DWS	C27-C34	-3.26	1.44	1.47
4	B	503	DWS	C8-C7	-2.73	1.49	1.53
4	C	501	DWS	C11-C12	-2.68	1.46	1.51
4	C	501	DWS	C10-C9	-2.62	1.49	1.53
4	C	501	DWS	O37-C2	-2.46	1.23	1.30
4	A	504	DWS	C15-N18	2.39	1.41	1.36
4	B	503	DWS	C11-C12	-2.26	1.47	1.51
4	C	501	DWS	C26-C27	-2.18	1.49	1.54
4	B	503	DWS	C10-C9	-2.17	1.50	1.53
4	C	501	DWS	C30-C29	-2.10	1.48	1.51
4	C	501	DWS	C30-C9	-2.09	1.50	1.54
3	A	502	ICT	C3-C6	2.06	1.55	1.51
3	A	505	ICT	C3-C6	2.03	1.54	1.51

All (31) bond angle outliers are listed below:

Mol	Chain	Res	Type	Atoms	Z	Observed(°)	Ideal(°)
4	B	503	DWS	C26-C27-C29	6.67	121.18	108.09
4	C	501	DWS	C26-C27-C29	6.61	121.06	108.09
4	A	504	DWS	C26-C27-C29	6.06	119.98	108.09
4	A	504	DWS	N14-C15-N16	-4.64	122.16	126.55
4	C	501	DWS	N14-C15-N16	-4.08	122.68	126.55
4	B	503	DWS	N14-C15-N16	-3.86	122.89	126.55
3	A	505	ICT	O3-C5-C4	-3.31	112.17	122.80
4	A	504	DWS	C10-C9-C8	3.21	115.64	110.43
4	C	501	DWS	C32-C30-C29	-3.20	105.08	111.68
3	B	502	ICT	O3-C5-C4	-3.09	112.90	122.80
4	A	504	DWS	C30-C29-C27	3.02	119.15	113.47
4	C	501	DWS	C26-C8-C17	-2.73	107.86	114.77
4	C	501	DWS	C10-C9-C8	2.67	114.76	110.43
4	A	504	DWS	C10-C9-C30	2.62	118.25	114.12
4	B	503	DWS	C26-C8-C17	-2.58	108.23	114.77
4	A	504	DWS	C26-C8-C17	-2.52	108.39	114.77
4	A	504	DWS	C8-C26-C27	2.44	116.51	111.68
3	A	502	ICT	C3-C4-C5	-2.44	109.19	114.04
3	A	502	ICT	O1-C1-C2	-2.36	115.43	121.63
3	A	502	ICT	O4-C5-O3	2.35	129.16	123.30
4	B	503	DWS	C7-C8-C17	-2.30	106.54	110.95
4	A	504	DWS	C7-C8-C17	-2.30	106.54	110.95

*Continued on next page...*

Continued from previous page...

Mol	Chain	Res	Type	Atoms	Z	Observed(°)	Ideal(°)
4	C	501	DWS	C23-C24-C19	2.29	122.47	119.72
4	B	503	DWS	C10-C9-C8	2.26	114.09	110.43
3	A	505	ICT	O4-C5-O3	2.24	128.88	123.30
3	B	502	ICT	O1-C1-C2	-2.14	116.00	121.63
4	A	504	DWS	N18-C15-N14	2.10	122.81	116.28
3	A	505	ICT	C3-C4-C5	-2.06	109.94	114.04
4	C	501	DWS	C32-C30-C9	-2.01	110.75	113.98
3	A	505	ICT	O5-C6-C3	-2.01	117.91	122.95
3	B	502	ICT	O4-C5-O3	2.00	128.29	123.30

There are no chirality outliers.

All (14) torsion outliers are listed below:

Mol	Chain	Res	Type	Atoms
4	A	504	DWS	O37-C2-C3-C4
4	A	504	DWS	O1-C2-C3-C4
4	C	501	DWS	O37-C2-C3-C4
4	A	504	DWS	O37-C2-C3-C36
4	C	501	DWS	O37-C2-C3-C36
4	A	504	DWS	O1-C2-C3-C36
4	B	503	DWS	C6-C7-C8-C17
4	B	503	DWS	C36-C7-C8-C17
4	C	501	DWS	C36-C7-C8-C17
3	A	502	ICT	C4-C3-C6-O5
3	A	502	ICT	C4-C3-C6-O6
3	B	502	ICT	C3-C4-C5-O4
3	A	505	ICT	C3-C4-C5-O3
3	A	505	ICT	C3-C4-C5-O4

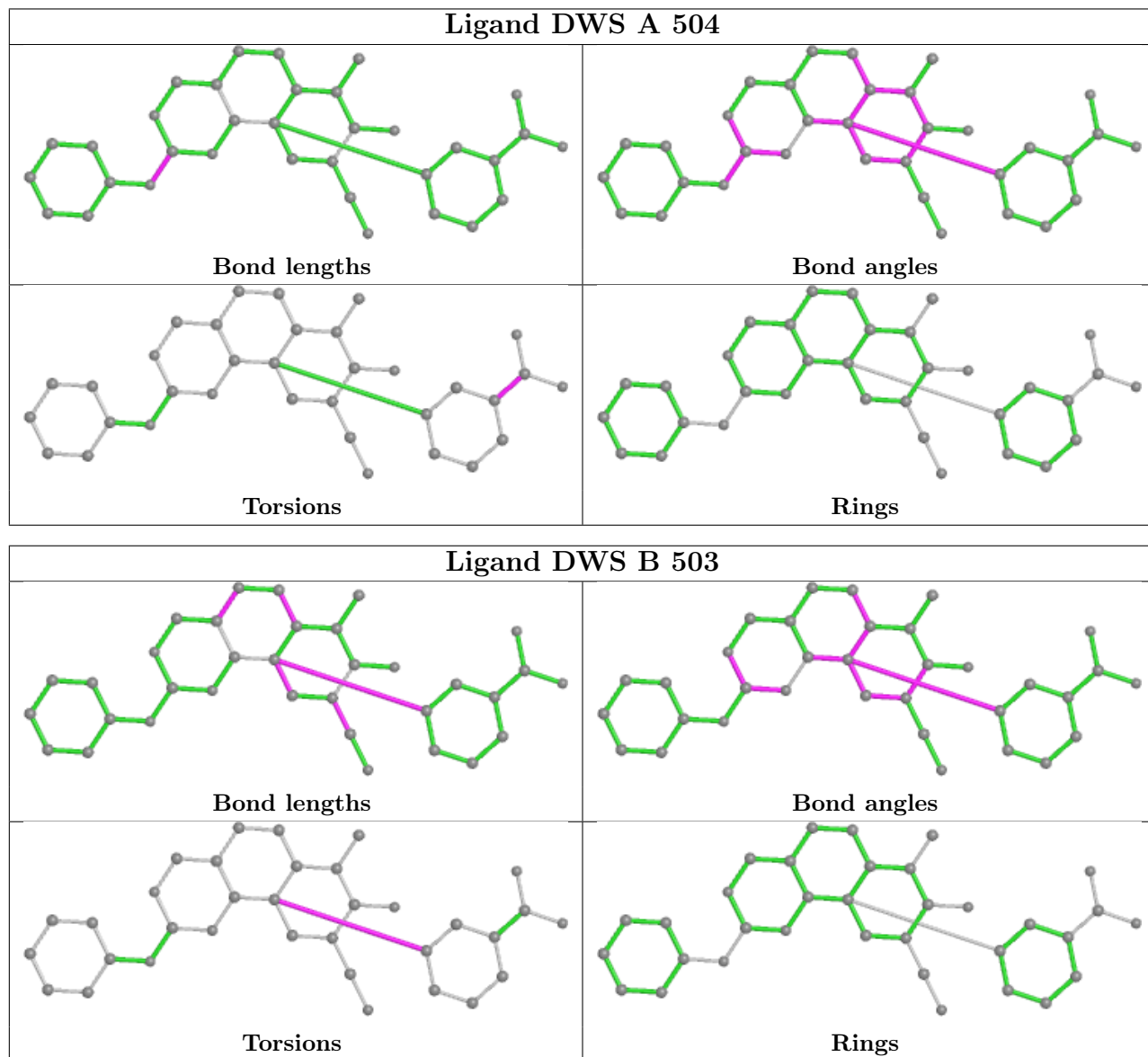
There are no ring outliers.

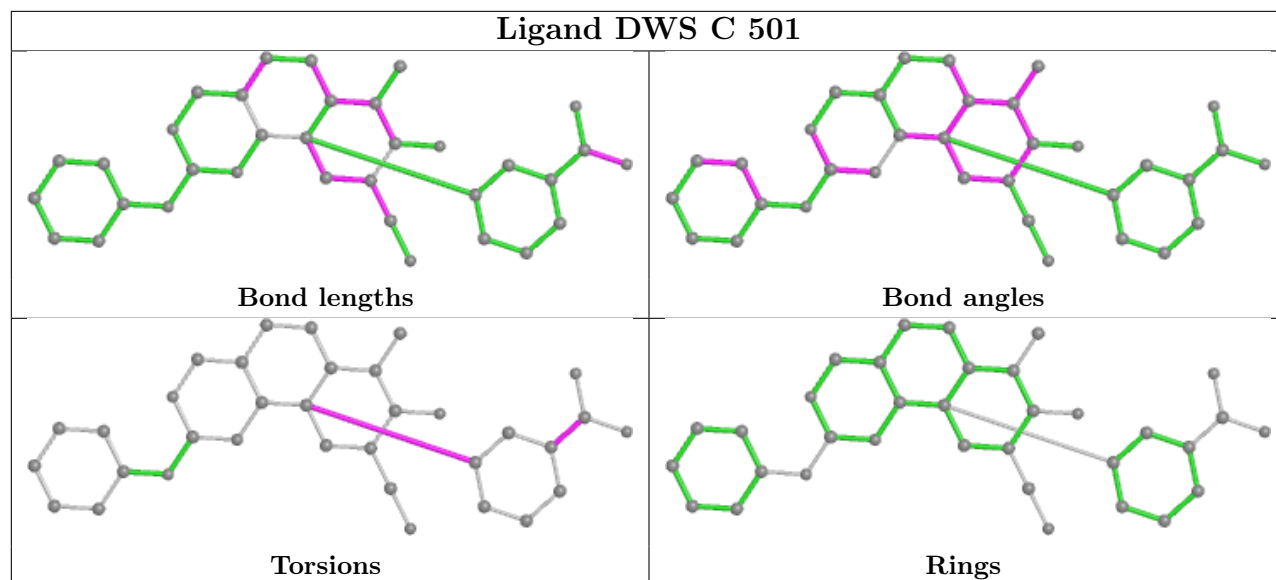
2 monomers are involved in 3 short contacts:

Mol	Chain	Res	Type	Clashes	Symm-Clashes
4	B	503	DWS	1	0
4	C	501	DWS	2	0

The following is a two-dimensional graphical depiction of Mogul quality analysis of bond lengths, bond angles, torsion angles, and ring geometry for all instances of the Ligand of Interest. In addition, ligands with molecular weight > 250 and outliers as shown on the validation Tables will also be included. For torsion angles, if less than 5% of the Mogul distribution of torsion angles is within 10 degrees of the torsion angle in question, then that torsion angle is considered an outlier. Any bond that is central to one or more torsion angles identified as an outlier by Mogul will be

highlighted in the graph. For rings, the root-mean-square deviation (RMSD) between the ring in question and similar rings identified by Mogul is calculated over all ring torsion angles. If the average RMSD is greater than 60 degrees and the minimal RMSD between the ring in question and any Mogul-identified rings is also greater than 60 degrees, then that ring is considered an outlier. The outliers are highlighted in purple. The color gray indicates Mogul did not find sufficient equivalents in the CSD to analyse the geometry.





## 5.7 Other polymers [i](#)

There are no such residues in this entry.

## 5.8 Polymer linkage issues [i](#)

There are no chain breaks in this entry.



## 6 Fit of model and data [i](#)

### 6.1 Protein, DNA and RNA chains [i](#)

In the following table, the column labelled ‘#RSRZ > 2’ contains the number (and percentage) of RSRZ outliers, followed by percent RSRZ outliers for the chain as percentile scores relative to all X-ray entries and entries of similar resolution. The OWAB column contains the minimum, median, 95<sup>th</sup> percentile and maximum values of the occupancy-weighted average B-factor per residue. The column labelled ‘Q < 0.9’ lists the number of (and percentage) of residues with an average occupancy less than 0.9.

Mol	Chain	Analysed	<RSRZ>	#RSRZ>2	OWAB(Å <sup>2</sup> )	Q<0.9
1	A	416/425 (97%)	0.02	9 (2%) 62 65	20, 33, 64, 152	0
1	B	416/425 (97%)	-0.07	3 (0%) 87 89	18, 28, 51, 132	0
1	C	416/425 (97%)	-0.14	3 (0%) 87 89	21, 31, 52, 112	0
All	All	1248/1275 (97%)	-0.06	15 (1%) 79 81	18, 31, 56, 152	0

All (15) RSRZ outliers are listed below:

Mol	Chain	Res	Type	RSRZ
1	B	418	HIS	6.6
1	A	418	HIS	6.4
1	C	418	HIS	6.2
1	A	161	GLY	6.0
1	A	163	GLN	4.8
1	A	417	GLU	4.4
1	A	162	THR	3.9
1	C	417	GLU	3.6
1	C	416	LEU	3.5
1	A	416	LEU	3.1
1	B	416	LEU	3.1
1	A	414	LEU	2.9
1	A	415	SER	2.9
1	A	159	SER	2.8
1	B	417	GLU	2.2

### 6.2 Non-standard residues in protein, DNA, RNA chains [i](#)

There are no non-standard protein/DNA/RNA residues in this entry.

### 6.3 Carbohydrates [i](#)

There are no monosaccharides in this entry.

### 6.4 Ligands [i](#)

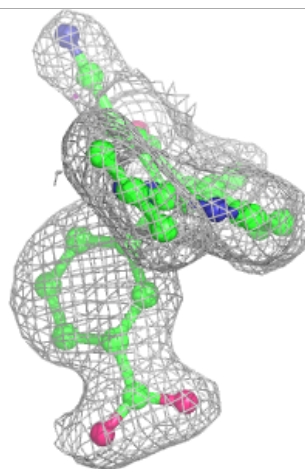
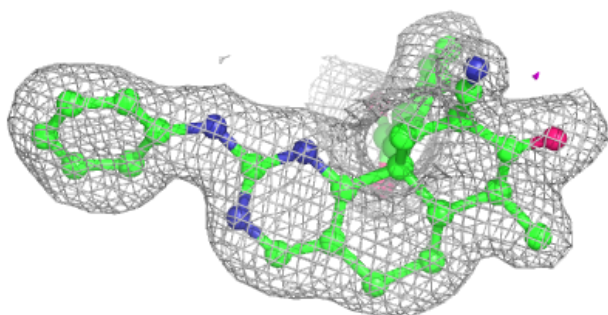
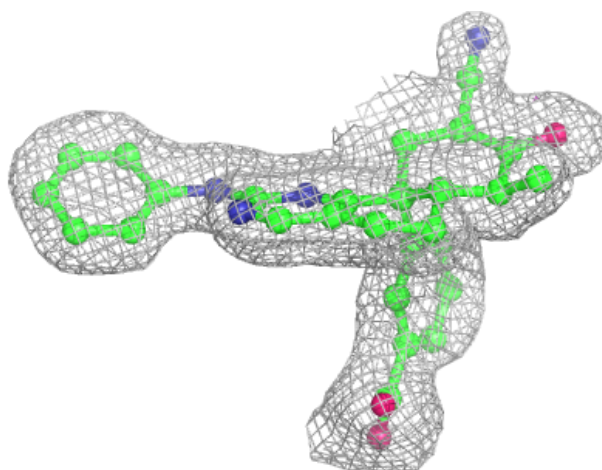
In the following table, the Atoms column lists the number of modelled atoms in the group and the number defined in the chemical component dictionary. The B-factors column lists the minimum, median, 95<sup>th</sup> percentile and maximum values of B factors of atoms in the group. The column labelled 'Q< 0.9' lists the number of atoms with occupancy less than 0.9.

Mol	Type	Chain	Res	Atoms	RSCC	RSR	B-factors(Å <sup>2</sup> )	Q<0.9
4	DWS	C	501	34/34	0.93	0.10	31,34,43,46	0
4	DWS	A	504	34/34	0.95	0.10	36,39,47,48	0
3	ICT	A	502	13/13	0.95	0.11	27,29,33,35	0
4	DWS	B	503	34/34	0.96	0.09	23,28,36,38	0
3	ICT	A	505	13/13	0.96	0.11	27,29,35,37	0
3	ICT	B	502	13/13	0.97	0.10	21,26,30,30	0
2	CA	A	501	1/1	0.98	0.03	39,39,39,39	0
2	CA	A	503	1/1	0.99	0.03	40,40,40,40	0
2	CA	B	501	1/1	1.00	0.04	35,35,35,35	0

The following is a graphical depiction of the model fit to experimental electron density of all instances of the Ligand of Interest. In addition, ligands with molecular weight > 250 and outliers as shown on the geometry validation Tables will also be included. Each fit is shown from different orientation to approximate a three-dimensional view.

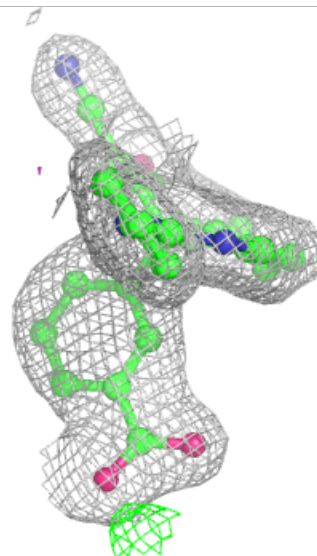
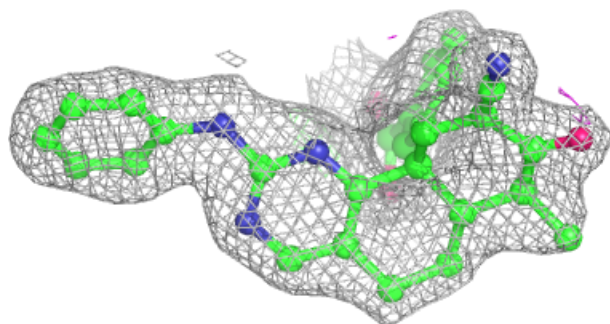
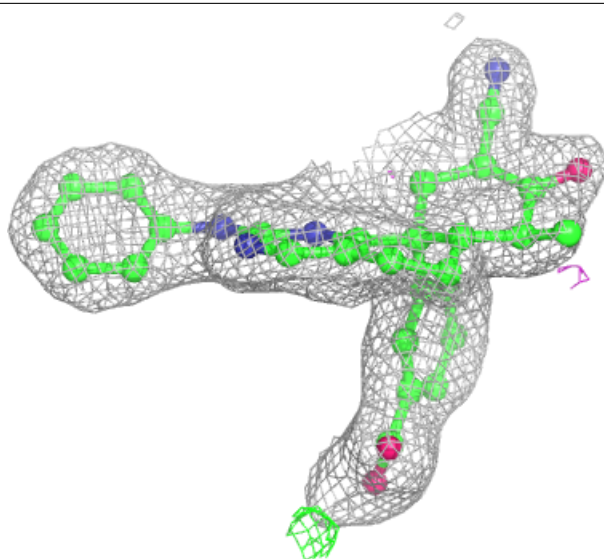
**Electron density around DWS C 501:**

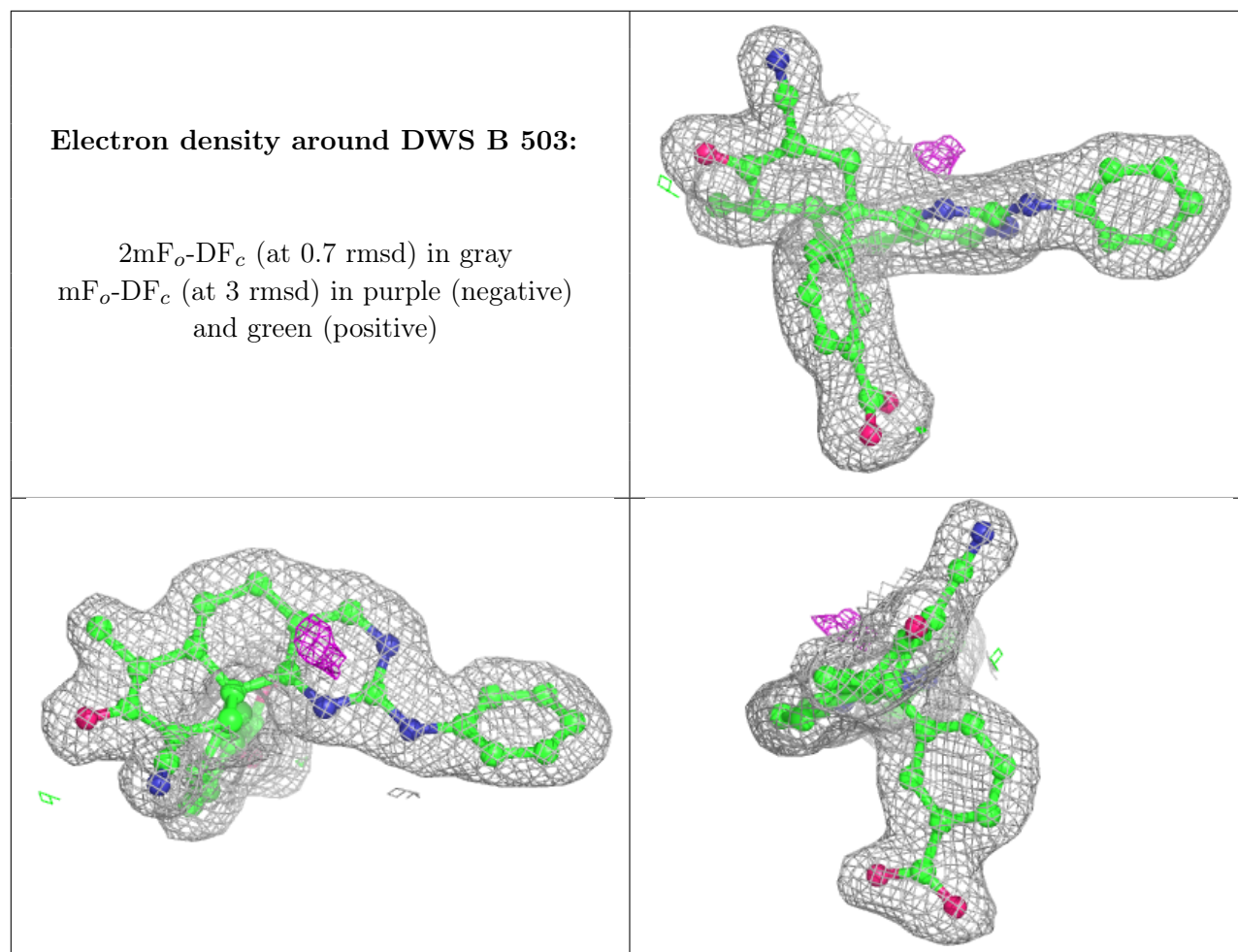
$2mF_o-DF_c$  (at 0.7 rmsd) in gray  
 $mF_o-DF_c$  (at 3 rmsd) in purple (negative)  
and green (positive)



**Electron density around DWS A 504:**

$2mF_o-DF_c$  (at 0.7 rmsd) in gray  
 $mF_o-DF_c$  (at 3 rmsd) in purple (negative)  
and green (positive)





## 6.5 Other polymers [i](#)

There are no such residues in this entry.