



Full wwPDB X-ray Structure Validation Report ⓘ

Nov 14, 2023 – 06:47 PM JST

PDB ID : 6A0D
Title : The crystal structure of Mandelate oxidase mutant Y128F with (S)-2-phenyl propanoic acid
Authors : Li, T.L.; Lin, K.H.
Deposited on : 2018-06-05
Resolution : 1.65 Å(reported)

This is a Full wwPDB X-ray Structure Validation Report for a publicly released PDB entry.

We welcome your comments at validation@mail.wwpdb.org

A user guide is available at

<https://www.wwpdb.org/validation/2017/XrayValidationReportHelp>

with specific help available everywhere you see the ⓘ symbol.

The types of validation reports are described at

<http://www.wwpdb.org/validation/2017/FAQs#types>.

The following versions of software and data (see [references ⓘ](#)) were used in the production of this report:

MolProbity : 4.02b-467
Mogul : 1.8.5 (274361), CSD as541be (2020)
Xtrriage (Phenix) : 1.13
EDS : 2.36
buster-report : 1.1.7 (2018)
Percentile statistics : 20191225.v01 (using entries in the PDB archive December 25th 2019)
Refmac : 5.8.0158
CCP4 : 7.0.044 (Gargrove)
Ideal geometry (proteins) : Engh & Huber (2001)
Ideal geometry (DNA, RNA) : Parkinson et al. (1996)
Validation Pipeline (wwPDB-VP) : 2.36

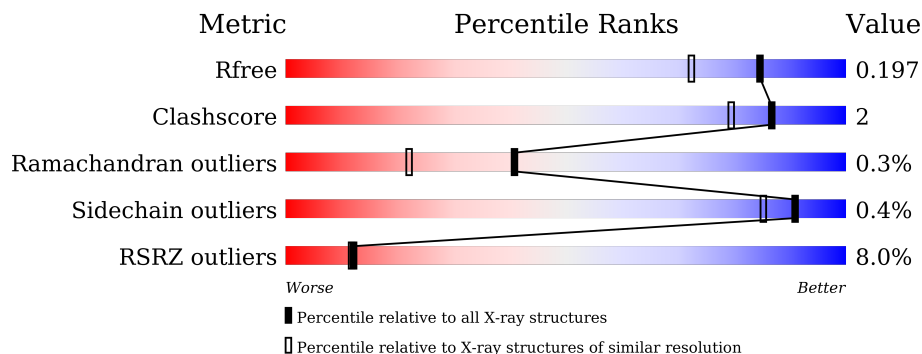
1 Overall quality at a glance

The following experimental techniques were used to determine the structure:

X-RAY DIFFRACTION

The reported resolution of this entry is 1.65 Å.

Percentile scores (ranging between 0-100) for global validation metrics of the entry are shown in the following graphic. The table shows the number of entries on which the scores are based.



Metric	Whole archive (#Entries)	Similar resolution (#Entries, resolution range(Å))
R_{free}	130704	1827 (1.66-1.66)
Clashscore	141614	1931 (1.66-1.66)
Ramachandran outliers	138981	1891 (1.66-1.66)
Sidechain outliers	138945	1891 (1.66-1.66)
RSRZ outliers	127900	1791 (1.66-1.66)

The table below summarises the geometric issues observed across the polymeric chains and their fit to the electron density. The red, orange, yellow and green segments of the lower bar indicate the fraction of residues that contain outliers for ≥ 3 , 2, 1 and 0 types of geometric quality criteria respectively. A grey segment represents the fraction of residues that are not modelled. The numeric value for each fraction is indicated below the corresponding segment, with a dot representing fractions $\leq 5\%$. The upper red bar (where present) indicates the fraction of residues that have poor fit to the electron density. The numeric value is given above the bar.

Mol	Chain	Length	Quality of chain
1	A	377	

2 Entry composition [i](#)

There are 4 unique types of molecules in this entry. The entry contains 2886 atoms, of which 0 are hydrogens and 0 are deuteriums.

In the tables below, the ZeroOcc column contains the number of atoms modelled with zero occupancy, the AltConf column contains the number of residues with at least one atom in alternate conformation and the Trace column contains the number of residues modelled with at most 2 atoms.

- Molecule 1 is a protein called 4-hydroxymandelate oxidase.

Mol	Chain	Residues	Atoms					ZeroOcc	AltConf	Trace
			Total	C	N	O	S			
1	A	327	2530	1589	459	471	11	0	13	0

There are 21 discrepancies between the modelled and reference sequences:

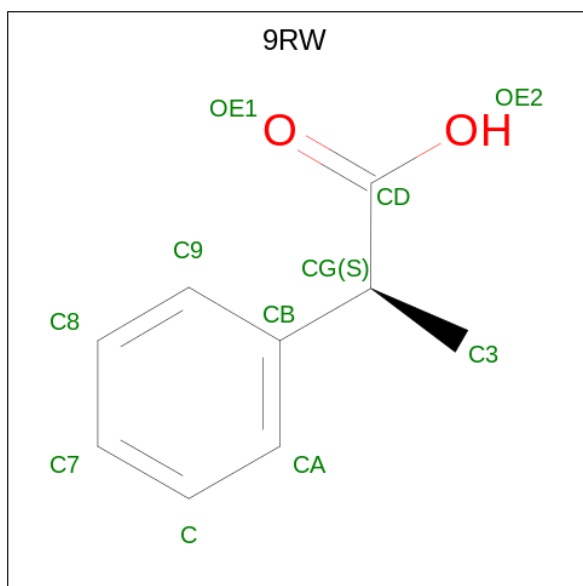
Chain	Residue	Modelled	Actual	Comment	Reference
A	-19	MET	-	expression tag	UNP O52792
A	-18	GLY	-	expression tag	UNP O52792
A	-17	SER	-	expression tag	UNP O52792
A	-16	SER	-	expression tag	UNP O52792
A	-15	HIS	-	expression tag	UNP O52792
A	-14	HIS	-	expression tag	UNP O52792
A	-13	HIS	-	expression tag	UNP O52792
A	-12	HIS	-	expression tag	UNP O52792
A	-11	HIS	-	expression tag	UNP O52792
A	-10	HIS	-	expression tag	UNP O52792
A	-9	SER	-	expression tag	UNP O52792
A	-8	SER	-	expression tag	UNP O52792
A	-7	GLY	-	expression tag	UNP O52792
A	-6	LEU	-	expression tag	UNP O52792
A	-5	VAL	-	expression tag	UNP O52792
A	-4	PRO	-	expression tag	UNP O52792
A	-3	ARG	-	expression tag	UNP O52792
A	-2	GLY	-	expression tag	UNP O52792
A	-1	SER	-	expression tag	UNP O52792
A	0	HIS	-	expression tag	UNP O52792
A	128	PHE	TYR	engineered mutation	UNP O52792

- Molecule 2 is FLAVIN MONONUCLEOTIDE (three-letter code: FMN) (formula: C₁₇H₂₁N₄O₉P).



Mol	Chain	Residues	Atoms					ZeroOcc	AltConf
			Total	C	N	O	P		
2	A	1	31	17	4	9	1	0	0

- Molecule 3 is (2 {S})-2-phenylpropanoic acid (three-letter code: 9RW) (formula: C₉H₁₀O₂).



Mol	Chain	Residues	Atoms			ZeroOcc	AltConf
			Total	C	O		
3	A	1	11	9	2	0	0
3	A	1	11	9	2	0	0

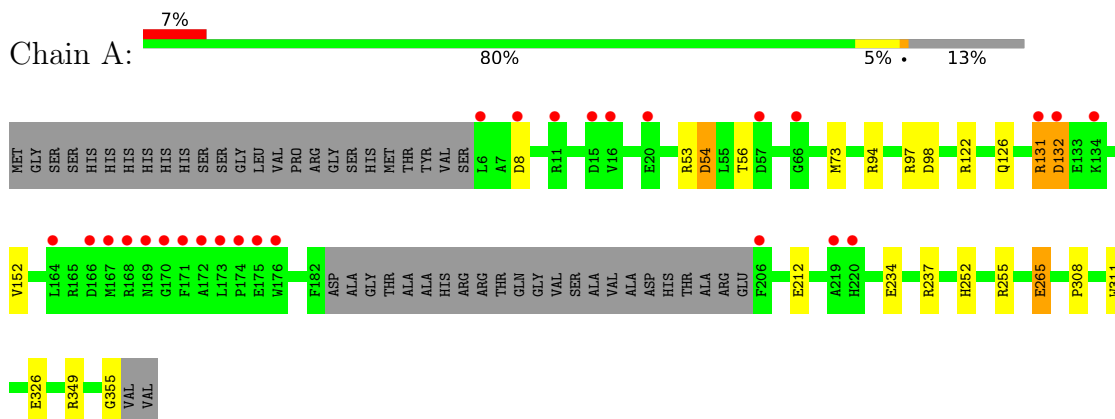
- Molecule 4 is water.

Mol	Chain	Residues	Atoms		ZeroOcc	AltConf
4	A	303	Total 303	O 303	0	0

3 Residue-property plots [i](#)

These plots are drawn for all protein, RNA, DNA and oligosaccharide chains in the entry. The first graphic for a chain summarises the proportions of the various outlier classes displayed in the second graphic. The second graphic shows the sequence view annotated by issues in geometry and electron density. Residues are color-coded according to the number of geometric quality criteria for which they contain at least one outlier: green = 0, yellow = 1, orange = 2 and red = 3 or more. A red dot above a residue indicates a poor fit to the electron density ($RSRZ > 2$). Stretches of 2 or more consecutive residues without any outlier are shown as a green connector. Residues present in the sample, but not in the model, are shown in grey.

- Molecule 1: 4-hydroxymandelate oxidase



4 Data and refinement statistics

Property	Value	Source
Space group	I 4 2 2	Depositor
Cell constants a, b, c, α , β , γ	137.94Å 137.94Å 111.31Å 90.00° 90.00° 90.00°	Depositor
Resolution (Å)	30.00 – 1.65 28.07 – 1.65	Depositor EDS
% Data completeness (in resolution range)	96.7 (30.00-1.65) 96.7 (28.07-1.65)	Depositor EDS
R_{merge}	0.04	Depositor
R_{sym}	(Not available)	Depositor
$\langle I/\sigma(I) \rangle$ ¹	2.82 (at 1.65Å)	Xtrriage
Refinement program	REFMAC 5.8.0218	Depositor
R, R_{free}	0.165 , 0.191 0.179 , 0.197	Depositor DCC
R_{free} test set	3188 reflections (5.09%)	wwPDB-VP
Wilson B-factor (Å ²)	13.6	Xtrriage
Anisotropy	0.122	Xtrriage
Bulk solvent k_{sol} (e/Å ³), B_{sol} (Å ²)	0.39 , 57.6	EDS
L-test for twinning ²	$\langle L \rangle = 0.50$, $\langle L^2 \rangle = 0.34$	Xtrriage
Estimated twinning fraction	No twinning to report.	Xtrriage
F_o, F_c correlation	0.96	EDS
Total number of atoms	2886	wwPDB-VP
Average B, all atoms (Å ²)	21.0	wwPDB-VP

Xtrriage's analysis on translational NCS is as follows: *The largest off-origin peak in the Patterson function is 3.12% of the height of the origin peak. No significant pseudotranslation is detected.*

¹Intensities estimated from amplitudes.

²Theoretical values of $\langle |L| \rangle$, $\langle L^2 \rangle$ for acentric reflections are 0.5, 0.333 respectively for untwinned datasets, and 0.375, 0.2 for perfectly twinned datasets.

5 Model quality [i](#)

5.1 Standard geometry [i](#)

Bond lengths and bond angles in the following residue types are not validated in this section: FMN, 9RW

The Z score for a bond length (or angle) is the number of standard deviations the observed value is removed from the expected value. A bond length (or angle) with $|Z| > 5$ is considered an outlier worth inspection. RMSZ is the root-mean-square of all Z scores of the bond lengths (or angles).

Mol	Chain	Bond lengths		Bond angles	
		RMSZ	# Z >5	RMSZ	# Z >5
1	A	1.08	4/2587 (0.2%)	1.13	14/3511 (0.4%)

All (4) bond length outliers are listed below:

Mol	Chain	Res	Type	Atoms	Z	Observed(Å)	Ideal(Å)
1	A	234	GLU	CD-OE1	6.29	1.32	1.25
1	A	326	GLU	CG-CD	5.73	1.60	1.51
1	A	326	GLU	CD-OE2	5.61	1.31	1.25
1	A	265	GLU	CG-CD	5.53	1.60	1.51

All (14) bond angle outliers are listed below:

Mol	Chain	Res	Type	Atoms	Z	Observed(°)	Ideal(°)
1	A	73	MET	CG-SD-CE	-17.45	72.27	100.20
1	A	255	ARG	NE-CZ-NH1	6.27	123.43	120.30
1	A	122	ARG	NE-CZ-NH1	-6.26	117.17	120.30
1	A	255	ARG	NE-CZ-NH2	-6.07	117.27	120.30
1	A	98	ASP	CB-CG-OD2	-5.69	113.18	118.30
1	A	97	ARG	NE-CZ-NH2	-5.64	117.48	120.30
1	A	237[A]	ARG	NE-CZ-NH1	5.56	123.08	120.30
1	A	237[B]	ARG	NE-CZ-NH1	5.56	123.08	120.30
1	A	349	ARG	NE-CZ-NH2	-5.52	117.54	120.30
1	A	237[A]	ARG	NE-CZ-NH2	-5.48	117.56	120.30
1	A	237[B]	ARG	NE-CZ-NH2	-5.48	117.56	120.30
1	A	54	ASP	CB-CG-OD2	-5.16	113.65	118.30
1	A	94	ARG	NE-CZ-NH2	-5.06	117.77	120.30
1	A	53	ARG	NE-CZ-NH1	-5.05	117.78	120.30

There are no chirality outliers.

There are no planarity outliers.

5.2 Too-close contacts

In the following table, the Non-H and H(model) columns list the number of non-hydrogen atoms and hydrogen atoms in the chain respectively. The H(added) column lists the number of hydrogen atoms added and optimized by MolProbity. The Clashes column lists the number of clashes within the asymmetric unit, whereas Symm-Clashes lists symmetry-related clashes.

Mol	Chain	Non-H	H(model)	H(added)	Clashes	Symm-Clashes
1	A	2530	0	2552	10	0
2	A	31	0	19	0	0
3	A	22	0	0	3	0
4	A	303	0	0	3	0
All	All	2886	0	2571	11	0

The all-atom clashscore is defined as the number of clashes found per 1000 atoms (including hydrogen atoms). The all-atom clashscore for this structure is 2.

All (11) close contacts within the same asymmetric unit are listed below, sorted by their clash magnitude.

Atom-1	Atom-2	Interatomic distance (Å)	Clash overlap (Å)
1:A:131:ARG:O	1:A:132:ASP:CB	2.49	0.59
1:A:131:ARG:O	1:A:132:ASP:HB2	2.07	0.54
1:A:54:ASP:OD1	1:A:56:THR:HG23	2.09	0.53
1:A:252:HIS:NE2	3:A:402:9RW:C3	2.73	0.52
3:A:402:9RW:OE2	3:A:402:9RW:CA	2.58	0.50
1:A:355:GLY:HA2	3:A:403:9RW:C8	2.45	0.46
1:A:8:ASP:HB3	4:A:639:HOH:O	2.17	0.44
1:A:265:GLU:OE2	4:A:501:HOH:O	2.21	0.43
1:A:126:GLN:HA	1:A:152:VAL:O	2.18	0.43
1:A:308:PRO:HA	1:A:311:TRP:CE3	2.55	0.41
1:A:212[A]:GLU:HG2	4:A:755:HOH:O	2.21	0.41

There are no symmetry-related clashes.

5.3 Torsion angles

5.3.1 Protein backbone

In the following table, the Percentiles column shows the percent Ramachandran outliers of the chain as a percentile score with respect to all X-ray entries followed by that with respect to entries of similar resolution.

The Analysed column shows the number of residues for which the backbone conformation was

analysed, and the total number of residues.

Mol	Chain	Analysed	Favoured	Allowed	Outliers	Percentiles
1	A	336/377 (89%)	329 (98%)	6 (2%)	1 (0%)	41 22

All (1) Ramachandran outliers are listed below:

Mol	Chain	Res	Type
1	A	132	ASP

5.3.2 Protein sidechains [i](#)

In the following table, the Percentiles column shows the percent sidechain outliers of the chain as a percentile score with respect to all X-ray entries followed by that with respect to entries of similar resolution.

The Analysed column shows the number of residues for which the sidechain conformation was analysed, and the total number of residues.

Mol	Chain	Analysed	Rotameric	Outliers	Percentiles
1	A	255/281 (91%)	254 (100%)	1 (0%)	91 85

All (1) residues with a non-rotameric sidechain are listed below:

Mol	Chain	Res	Type
1	A	131	ARG

Sometimes sidechains can be flipped to improve hydrogen bonding and reduce clashes. There are no such sidechains identified.

5.3.3 RNA [i](#)

There are no RNA molecules in this entry.

5.4 Non-standard residues in protein, DNA, RNA chains [i](#)

There are no non-standard protein/DNA/RNA residues in this entry.

5.5 Carbohydrates [i](#)

There are no monosaccharides in this entry.

5.6 Ligand geometry

3 ligands are modelled in this entry.

In the following table, the Counts columns list the number of bonds (or angles) for which Mogul statistics could be retrieved, the number of bonds (or angles) that are observed in the model and the number of bonds (or angles) that are defined in the Chemical Component Dictionary. The Link column lists molecule types, if any, to which the group is linked. The Z score for a bond length (or angle) is the number of standard deviations the observed value is removed from the expected value. A bond length (or angle) with $|Z| > 2$ is considered an outlier worth inspection. RMSZ is the root-mean-square of all Z scores of the bond lengths (or angles).

Mol	Type	Chain	Res	Link	Bond lengths			Bond angles		
					Counts	RMSZ	# Z > 2	Counts	RMSZ	# Z > 2
2	FMN	A	401	-	33,33,33	2.25	14 (42%)	48,50,50	2.07	17 (35%)
3	9RW	A	402	-	11,11,11	2.06	1 (9%)	14,14,14	1.41	3 (21%)
3	9RW	A	403	-	11,11,11	2.46	5 (45%)	14,14,14	0.95	0

In the following table, the Chirals column lists the number of chiral outliers, the number of chiral centers analysed, the number of these observed in the model and the number defined in the Chemical Component Dictionary. Similar counts are reported in the Torsion and Rings columns. '-' means no outliers of that kind were identified.

Mol	Type	Chain	Res	Link	Chirals	Torsions	Rings
2	FMN	A	401	-	-	6/18/18/18	0/3/3/3
3	9RW	A	402	-	-	2/8/8/8	0/1/1/1
3	9RW	A	403	-	-	4/8/8/8	0/1/1/1

All (20) bond length outliers are listed below:

Mol	Chain	Res	Type	Atoms	Z	Observed(Å)	Ideal(Å)
3	A	402	9RW	CB-CG	-6.42	1.41	1.52
2	A	401	FMN	C9A-C5A	5.90	1.51	1.41
2	A	401	FMN	O5'-C5'	-4.82	1.26	1.44
2	A	401	FMN	O4-C4	4.08	1.31	1.23
3	A	403	9RW	C9-CB	3.97	1.45	1.39
3	A	403	9RW	CB-CG	-3.94	1.46	1.52
2	A	401	FMN	C4A-N5	3.62	1.37	1.30
3	A	403	9RW	CA-CB	3.03	1.43	1.39
2	A	401	FMN	C2-N1	-2.94	1.29	1.36
2	A	401	FMN	C9-C9A	-2.90	1.34	1.39
2	A	401	FMN	C5A-N5	-2.86	1.33	1.39
2	A	401	FMN	C4-N3	-2.73	1.33	1.38
2	A	401	FMN	C5'-C4'	2.50	1.55	1.51

Continued on next page...

Continued from previous page...

Mol	Chain	Res	Type	Atoms	Z	Observed(Å)	Ideal(Å)
2	A	401	FMN	C4'-C3'	-2.42	1.48	1.53
2	A	401	FMN	P-O2P	-2.42	1.45	1.54
3	A	403	9RW	C-CA	2.37	1.43	1.38
2	A	401	FMN	C9-C8	2.26	1.42	1.39
3	A	403	9RW	C7-C	2.15	1.43	1.38
2	A	401	FMN	O4'-C4'	2.09	1.47	1.43
2	A	401	FMN	C4A-C10	2.09	1.50	1.44

All (20) bond angle outliers are listed below:

Mol	Chain	Res	Type	Atoms	Z	Observed(°)	Ideal(°)
2	A	401	FMN	C5'-C4'-C3'	-6.37	99.90	112.20
2	A	401	FMN	P-O5'-C5'	4.18	129.82	118.30
2	A	401	FMN	C10-N1-C2	3.96	124.82	116.90
2	A	401	FMN	C4-C4A-N5	3.26	122.86	118.23
2	A	401	FMN	C4A-C10-N1	-3.03	117.70	124.73
2	A	401	FMN	C6-C5A-N5	3.02	123.78	118.51
2	A	401	FMN	C9-C8-C7	-2.93	115.47	119.67
2	A	401	FMN	O2P-P-O5'	-2.84	99.17	106.73
2	A	401	FMN	O4-C4-C4A	-2.82	119.13	126.60
2	A	401	FMN	C4A-C4-N3	2.78	120.26	113.19
2	A	401	FMN	C9A-C9-C8	2.56	124.46	119.30
3	A	402	9RW	C8-C9-CB	-2.47	117.59	120.65
2	A	401	FMN	C4-N3-C2	-2.46	121.10	125.64
3	A	402	9RW	C7-C8-C9	2.33	123.74	120.19
2	A	401	FMN	N10-C10-N1	2.23	124.77	118.35
2	A	401	FMN	O3P-P-O5'	2.21	112.61	106.73
3	A	402	9RW	C-CA-CB	2.19	123.36	120.65
2	A	401	FMN	C6-C5A-C9A	-2.12	115.94	118.94
2	A	401	FMN	C9A-C5A-N5	-2.06	120.19	122.43
2	A	401	FMN	C1'-N10-C9A	-2.06	117.07	120.51

There are no chirality outliers.

All (12) torsion outliers are listed below:

Mol	Chain	Res	Type	Atoms
2	A	401	FMN	O3'-C3'-C4'-C5'
2	A	401	FMN	C2'-C3'-C4'-C5'
2	A	401	FMN	C4'-C5'-O5'-P
3	A	403	9RW	OE2-CD-CG-CB
2	A	401	FMN	C2'-C3'-C4'-O4'
2	A	401	FMN	C5'-O5'-P-O1P

Continued on next page...

Continued from previous page...

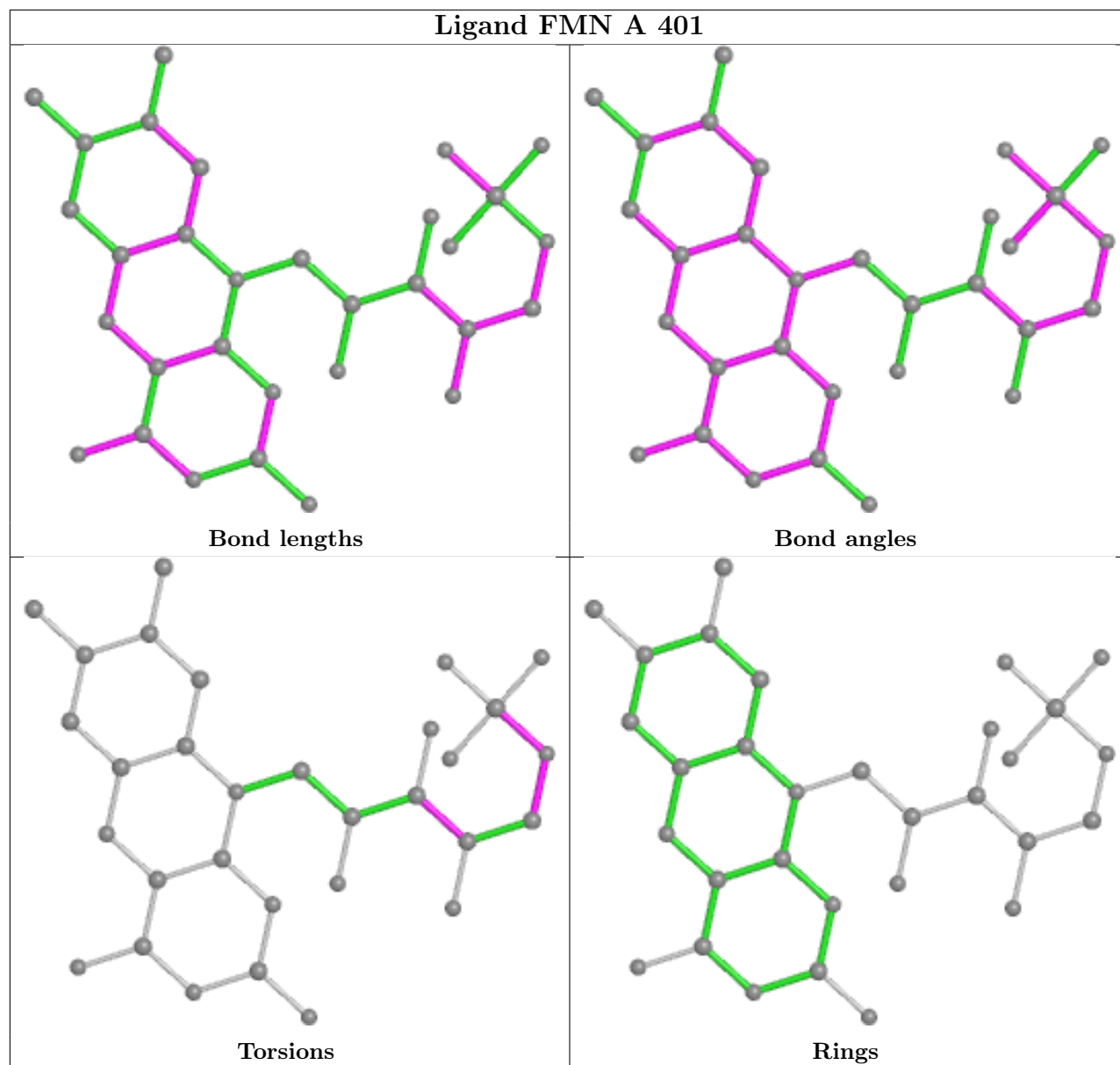
Mol	Chain	Res	Type	Atoms
3	A	403	9RW	OE1-CD-CG-CB
3	A	403	9RW	OE2-CD-CG-C3
3	A	402	9RW	OE2-CD-CG-CB
3	A	403	9RW	OE1-CD-CG-C3
3	A	402	9RW	OE1-CD-CG-CB
2	A	401	FMN	O3'-C3'-C4'-O4'

There are no ring outliers.

2 monomers are involved in 3 short contacts:

Mol	Chain	Res	Type	Clashes	Symm-Clashes
3	A	402	9RW	2	0
3	A	403	9RW	1	0

The following is a two-dimensional graphical depiction of Mogul quality analysis of bond lengths, bond angles, torsion angles, and ring geometry for all instances of the Ligand of Interest. In addition, ligands with molecular weight > 250 and outliers as shown on the validation Tables will also be included. For torsion angles, if less than 5% of the Mogul distribution of torsion angles is within 10 degrees of the torsion angle in question, then that torsion angle is considered an outlier. Any bond that is central to one or more torsion angles identified as an outlier by Mogul will be highlighted in the graph. For rings, the root-mean-square deviation (RMSD) between the ring in question and similar rings identified by Mogul is calculated over all ring torsion angles. If the average RMSD is greater than 60 degrees and the minimal RMSD between the ring in question and any Mogul-identified rings is also greater than 60 degrees, then that ring is considered an outlier. The outliers are highlighted in purple. The color gray indicates Mogul did not find sufficient equivalents in the CSD to analyse the geometry.



5.7 Other polymers [i](#)

There are no such residues in this entry.

5.8 Polymer linkage issues [i](#)

There are no chain breaks in this entry.

6 Fit of model and data

6.1 Protein, DNA and RNA chains

In the following table, the column labelled ‘#RSRZ> 2’ contains the number (and percentage) of RSRZ outliers, followed by percent RSRZ outliers for the chain as percentile scores relative to all X-ray entries and entries of similar resolution. The OWAB column contains the minimum, median, 95th percentile and maximum values of the occupancy-weighted average B-factor per residue. The column labelled ‘Q< 0.9’ lists the number of (and percentage) of residues with an average occupancy less than 0.9.

Mol	Chain	Analysed	<RSRZ>	#RSRZ>2	OWAB(Å ²)	Q<0.9
1	A	327/377 (86%)	0.20	26 (7%) 12 12	7, 15, 50, 68	0

All (26) RSRZ outliers are listed below:

Mol	Chain	Res	Type	RSRZ
1	A	176	TRP	7.4
1	A	167	MET	5.2
1	A	172	ALA	4.9
1	A	206	PHE	4.8
1	A	170	GLY	4.7
1	A	168	ARG	4.6
1	A	175	GLU	4.4
1	A	171	PHE	4.4
1	A	131	ARG	4.3
1	A	11	ARG	4.2
1	A	6	LEU	3.7
1	A	164	LEU	3.3
1	A	16	VAL	3.3
1	A	134	LYS	3.3
1	A	169	ASN	3.1
1	A	57	ASP	2.8
1	A	15	ASP	2.8
1	A	174	PRO	2.7
1	A	166	ASP	2.7
1	A	173	LEU	2.7
1	A	132	ASP	2.6
1	A	66	GLY	2.4
1	A	8	ASP	2.4
1	A	220	HIS	2.3
1	A	20	GLU	2.2
1	A	219	ALA	2.0

6.2 Non-standard residues in protein, DNA, RNA chains [i](#)

There are no non-standard protein/DNA/RNA residues in this entry.

6.3 Carbohydrates [i](#)

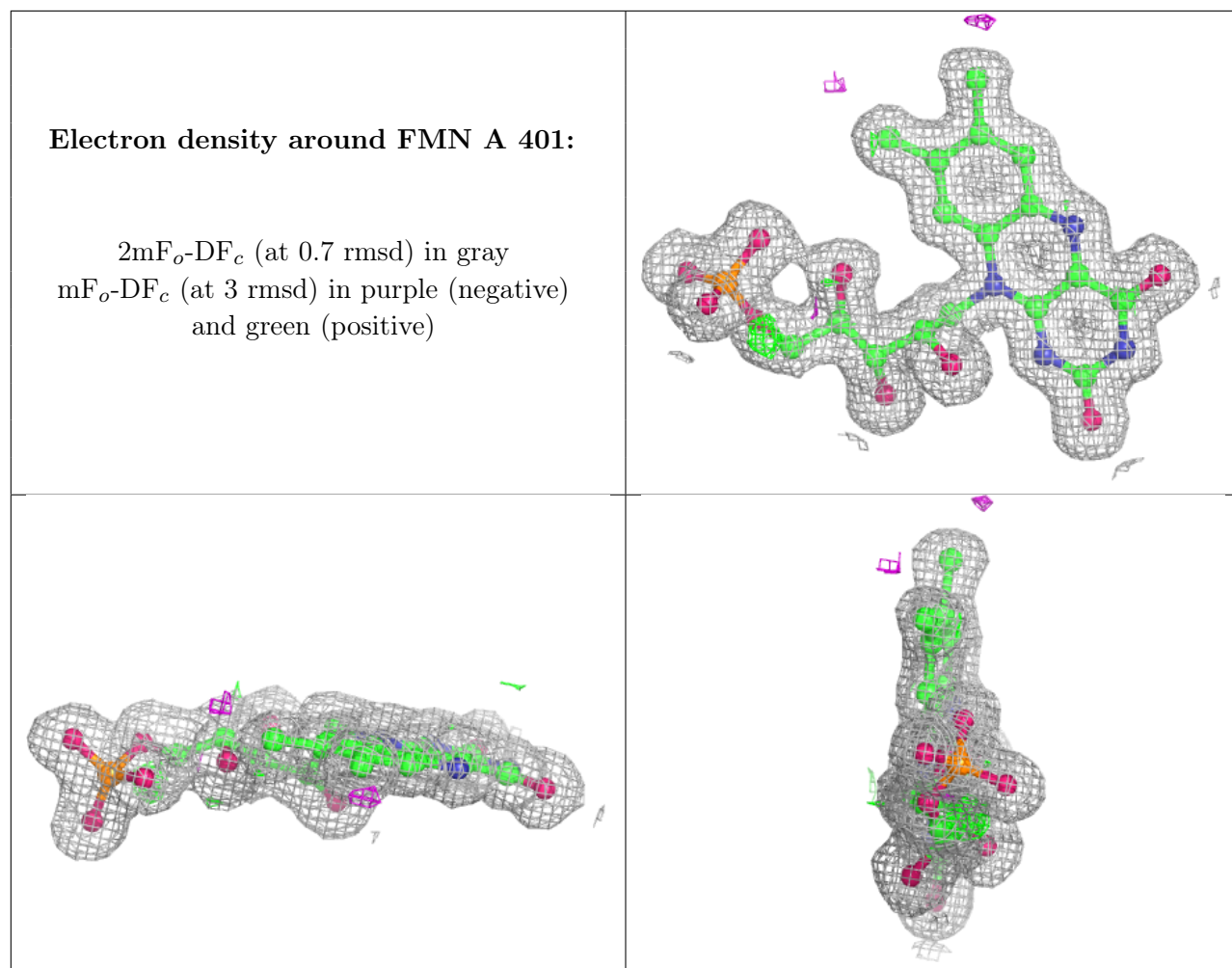
There are no monosaccharides in this entry.

6.4 Ligands [i](#)

In the following table, the Atoms column lists the number of modelled atoms in the group and the number defined in the chemical component dictionary. The B-factors column lists the minimum, median, 95th percentile and maximum values of B factors of atoms in the group. The column labelled 'Q< 0.9' lists the number of atoms with occupancy less than 0.9.

Mol	Type	Chain	Res	Atoms	RSCC	RSR	B-factors(Å ²)	Q<0.9
3	9RW	A	402	11/11	0.66	0.29	32,59,71,79	0
3	9RW	A	403	11/11	0.74	0.28	33,36,40,40	0
2	FMN	A	401	31/31	0.98	0.11	8,11,15,16	0

The following is a graphical depiction of the model fit to experimental electron density of all instances of the Ligand of Interest. In addition, ligands with molecular weight > 250 and outliers as shown on the geometry validation Tables will also be included. Each fit is shown from different orientation to approximate a three-dimensional view.



6.5 Other polymers [i](#)

There are no such residues in this entry.