



Full wwPDB X-ray Structure Validation Report ⓘ

Aug 8, 2020 – 05:37 AM BST

PDB ID : 5Z14
Title : Crystal structure of human TLR8 in complex with CU-CPT9a
Authors : Tanji, H.; Ohto, U.; Shimizu, T.
Deposited on : 2017-12-25
Resolution : 2.80 Å(reported)

This is a Full wwPDB X-ray Structure Validation Report for a publicly released PDB entry.

We welcome your comments at validation@mail.wwpdb.org

A user guide is available at

<https://www.wwpdb.org/validation/2017/XrayValidationReportHelp>

with specific help available everywhere you see the ⓘ symbol.

The following versions of software and data (see [references ⓘ](#)) were used in the production of this report:

MolProbity : 4.02b-467
Mogul : 1.8.5 (274361), CSD as541be (2020)
Xtriage (Phenix) : 1.13
EDS : 2.13.1
buster-report : 1.1.7 (2018)
Percentile statistics : 20191225.v01 (using entries in the PDB archive December 25th 2019)
Refmac : 5.8.0158
CCP4 : 7.0.044 (Gargrove)
Ideal geometry (proteins) : Engh & Huber (2001)
Ideal geometry (DNA, RNA) : Parkinson et al. (1996)
Validation Pipeline (wwPDB-VP) : 2.13.1

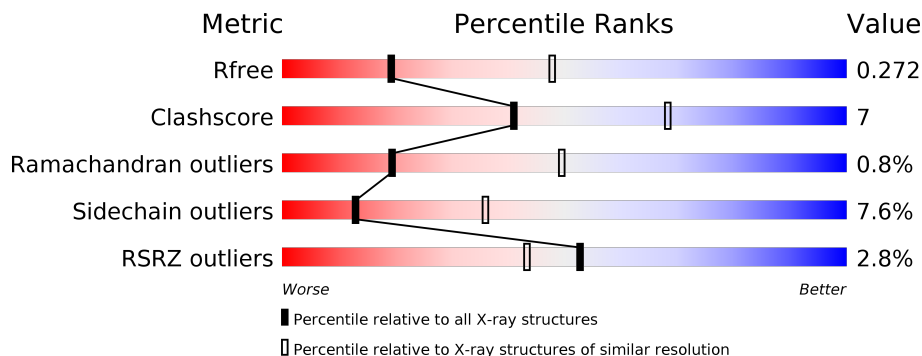
1 Overall quality at a glance i

The following experimental techniques were used to determine the structure:

X-RAY DIFFRACTION

The reported resolution of this entry is 2.80 Å.

Percentile scores (ranging between 0-100) for global validation metrics of the entry are shown in the following graphic. The table shows the number of entries on which the scores are based.



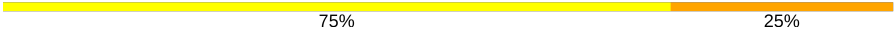

Metric	Whole archive (#Entries)	Similar resolution (#Entries, resolution range(Å))
R_{free}	130704	3140 (2.80-2.80)
Clashscore	141614	3569 (2.80-2.80)
Ramachandran outliers	138981	3498 (2.80-2.80)
Sidechain outliers	138945	3500 (2.80-2.80)
RSRZ outliers	127900	3078 (2.80-2.80)

The table below summarises the geometric issues observed across the polymeric chains and their fit to the electron density. The red, orange, yellow and green segments on the lower bar indicate the fraction of residues that contain outliers for ≥ 3 , 2, 1 and 0 types of geometric quality criteria respectively. A grey segment represents the fraction of residues that are not modelled. The numeric value for each fraction is indicated below the corresponding segment, with a dot representing fractions $\leq 5\%$. The upper red bar (where present) indicates the fraction of residues that have poor fit to the electron density. The numeric value is given above the bar.

Mol	Chain	Length	Quality of chain
1	A	811	<div style="display: flex; align-items: center;"> <div style="width: 3%; height: 10px; background-color: red; margin-right: 5px;"></div> <div style="width: 71%; height: 10px; background-color: green; margin-right: 5px;"></div> <div style="width: 18%; height: 10px; background-color: yellow; margin-right: 5px;"></div> <div style="width: 8%; height: 10px; background-color: grey; margin-right: 5px;"></div> </div> <p style="text-align: center;">3% 71% 18% • 8%</p>
1	B	811	<div style="display: flex; align-items: center;"> <div style="width: 2%; height: 10px; background-color: red; margin-right: 5px;"></div> <div style="width: 70%; height: 10px; background-color: green; margin-right: 5px;"></div> <div style="width: 19%; height: 10px; background-color: yellow; margin-right: 5px;"></div> <div style="width: 9%; height: 10px; background-color: grey; margin-right: 5px;"></div> </div> <p style="text-align: center;">2% 70% 19% • 9%</p>
2	C	3	<div style="display: flex; align-items: center;"> <div style="width: 67%; height: 10px; background-color: yellow; margin-right: 5px;"></div> <div style="width: 33%; height: 10px; background-color: orange; margin-right: 5px;"></div> </div> <p style="text-align: center;">67% 33%</p>
3	D	2	<div style="width: 100%; height: 10px; background-color: yellow;"></div> <p style="text-align: center;">100%</p>
3	G	2	<div style="width: 100%; height: 10px; background-color: yellow;"></div> <p style="text-align: center;">100%</p>
4	E	5	<div style="width: 100%; height: 10px; background-color: yellow;"></div> <p style="text-align: center;">100%</p>

Continued on next page...

Continued from previous page...

Mol	Chain	Length	Quality of chain
5	F	4	 75% 25%
6	H	4	 75% 25%

2 Entry composition [i](#)

There are 9 unique types of molecules in this entry. The entry contains 12281 atoms, of which 0 are hydrogens and 0 are deuteriums.

In the tables below, the ZeroOcc column contains the number of atoms modelled with zero occupancy, the AltConf column contains the number of residues with at least one atom in alternate conformation and the Trace column contains the number of residues modelled with at most 2 atoms.

- Molecule 1 is a protein called Toll-like receptor 8.

Mol	Chain	Residues	Atoms					ZeroOcc	AltConf	Trace
			Total	C	N	O	S			
1	A	743	Total	C	N	O	S	0	0	0
			5980	3823	1018	1120	19			
1	B	734	Total	C	N	O	S	0	0	0
			5915	3785	1004	1107	19			

There are 20 discrepancies between the modelled and reference sequences:

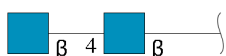
Chain	Residue	Modelled	Actual	Comment	Reference
A	23	ARG	-	expression tag	UNP Q9NR97
A	24	SER	-	expression tag	UNP Q9NR97
A	25	PRO	-	expression tag	UNP Q9NR97
A	26	TRP	-	expression tag	UNP Q9NR97
A	828	GLU	-	expression tag	UNP Q9NR97
A	829	PHE	-	expression tag	UNP Q9NR97
A	830	LEU	-	expression tag	UNP Q9NR97
A	831	VAL	-	expression tag	UNP Q9NR97
A	832	PRO	-	expression tag	UNP Q9NR97
A	833	ARG	-	expression tag	UNP Q9NR97
B	23	ARG	-	expression tag	UNP Q9NR97
B	24	SER	-	expression tag	UNP Q9NR97
B	25	PRO	-	expression tag	UNP Q9NR97
B	26	TRP	-	expression tag	UNP Q9NR97
B	828	GLU	-	expression tag	UNP Q9NR97
B	829	PHE	-	expression tag	UNP Q9NR97
B	830	LEU	-	expression tag	UNP Q9NR97
B	831	VAL	-	expression tag	UNP Q9NR97
B	832	PRO	-	expression tag	UNP Q9NR97
B	833	ARG	-	expression tag	UNP Q9NR97

- Molecule 2 is an oligosaccharide called beta-D-mannopyranose-(1-4)-2-acetamido-2-deoxy-beta-D-glucopyranose-(1-4)-2-acetamido-2-deoxy-beta-D-glucopyranose.



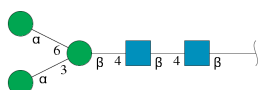
Mol	Chain	Residues	Atoms				ZeroOcc	AltConf	Trace
			Total	C	N	O			
2	C	3	39	22	2	15	0	0	0

- Molecule 3 is an oligosaccharide called 2-acetamido-2-deoxy-beta-D-glucopyranose-(1-4)-2-acetamido-2-deoxy-beta-D-glucopyranose.



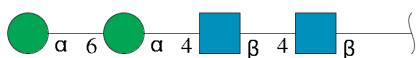
Mol	Chain	Residues	Atoms				ZeroOcc	AltConf	Trace
			Total	C	N	O			
3	D	2	28	16	2	10	0	0	0
3	G	2	28	16	2	10	0	0	0

- Molecule 4 is an oligosaccharide called alpha-D-mannopyranose-(1-3)-[alpha-D-mannopyranose-(1-6)]beta-D-mannopyranose-(1-4)-2-acetamido-2-deoxy-beta-D-glucopyranose-(1-4)-2-acetamido-2-deoxy-beta-D-glucopyranose.



Mol	Chain	Residues	Atoms				ZeroOcc	AltConf	Trace
			Total	C	N	O			
4	E	5	61	34	2	25	0	0	0

- Molecule 5 is an oligosaccharide called alpha-D-mannopyranose-(1-6)-alpha-D-mannopyranose-(1-4)-2-acetamido-2-deoxy-beta-D-glucopyranose-(1-4)-2-acetamido-2-deoxy-beta-D-glucopyranose.



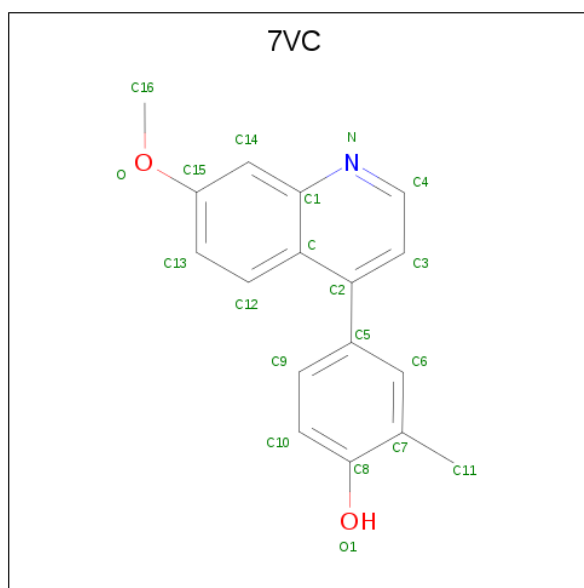
Mol	Chain	Residues	Atoms				ZeroOcc	AltConf	Trace
			Total	C	N	O			
5	F	4	50	28	2	20	0	0	0

- Molecule 6 is an oligosaccharide called alpha-D-mannopyranose-(1-6)-beta-D-mannopyranose-(1-4)-2-acetamido-2-deoxy-beta-D-glucopyranose-(1-4)-2-acetamido-2-deoxy-beta-D-glucopyranose.



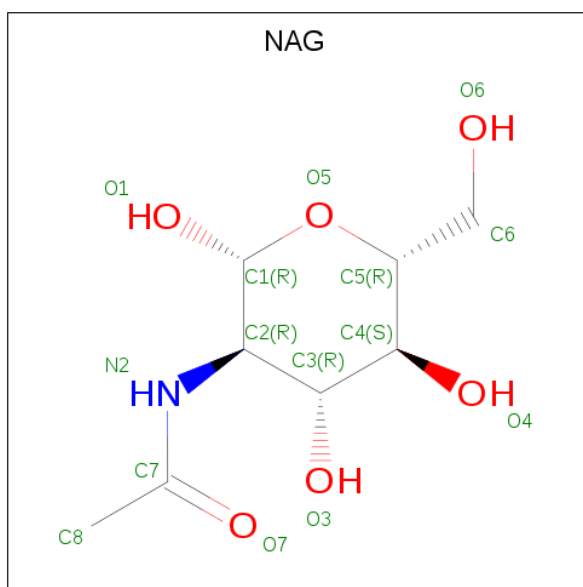
Mol	Chain	Residues	Atoms				ZeroOcc	AltConf	Trace
			Total	C	N	O			
6	H	4	50	28	2	20	0	0	0

- Molecule 7 is 4-(7-methoxyquinolin-4-yl)-2-methyl-phenol (three-letter code: 7VC) (formula: C₁₇H₁₅NO₂).



Mol	Chain	Residues	Atoms				ZeroOcc	AltConf
			Total	C	N	O		
7	A	1	20	17	1	2	0	0
7	A	1	20	17	1	2	0	0

- Molecule 8 is 2-acetamido-2-deoxy-beta-D-glucopyranose (three-letter code: NAG) (formula: C₈H₁₅NO₆).



Mol	Chain	Residues	Atoms				ZeroOcc	AltConf
8	A	1	Total	C	N	O	0	0
			14	8	1	5		
8	A	1	Total	C	N	O	0	0
			14	8	1	5		
8	B	1	Total	C	N	O	0	0
			14	8	1	5		

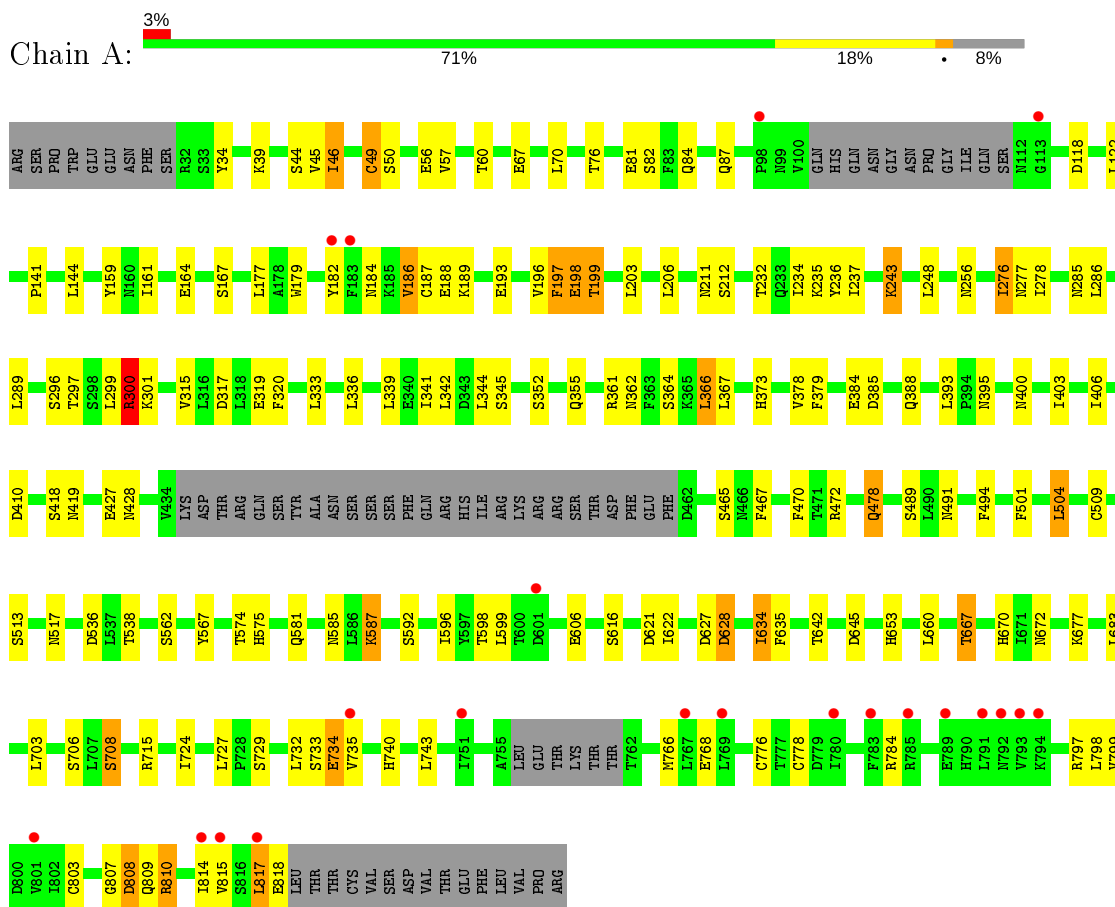
- Molecule 9 is water.

Mol	Chain	Residues	Atoms		ZeroOcc	AltConf
9	A	28	Total	O	0	0
			28	28		
9	B	20	Total	O	0	0
			20	20		

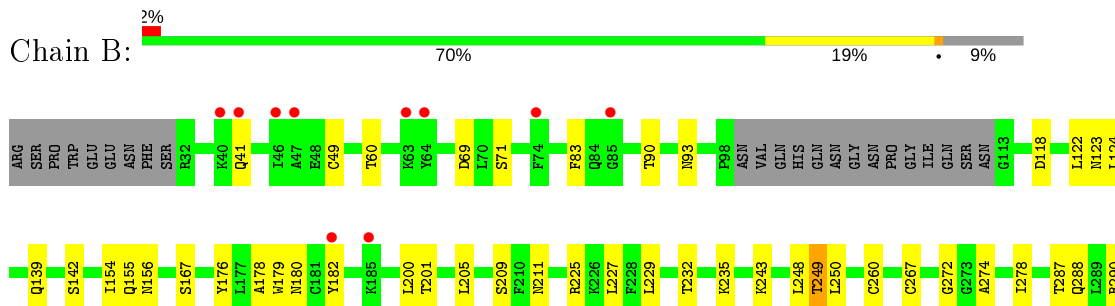
3 Residue-property plots

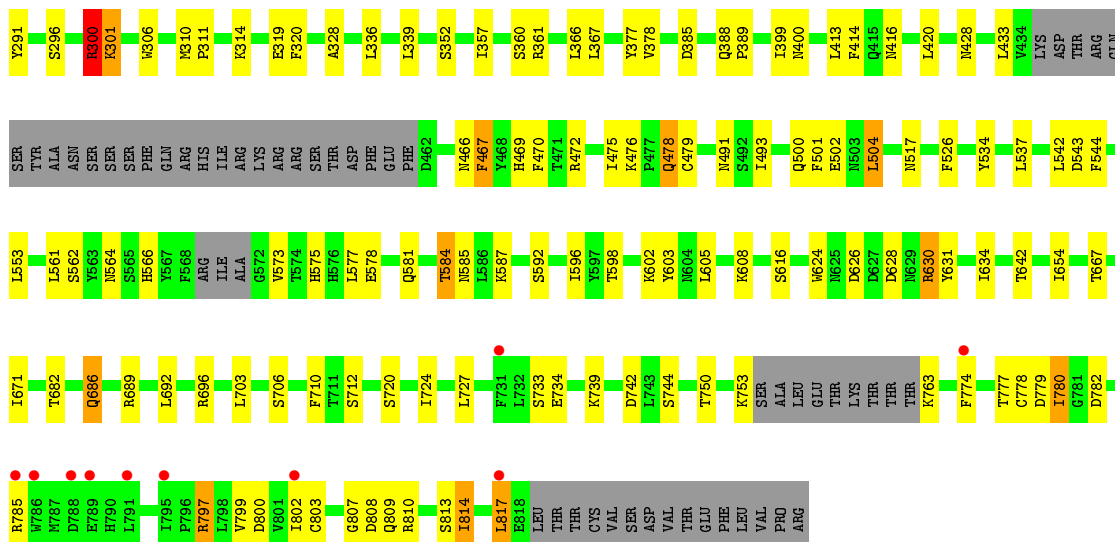
These plots are drawn for all protein, RNA, DNA and oligosaccharide chains in the entry. The first graphic for a chain summarises the proportions of the various outlier classes displayed in the second graphic. The second graphic shows the sequence view annotated by issues in geometry and electron density. Residues are color-coded according to the number of geometric quality criteria for which they contain at least one outlier: green = 0, yellow = 1, orange = 2 and red = 3 or more. A red dot above a residue indicates a poor fit to the electron density ($RSRZ > 2$). Stretches of 2 or more consecutive residues without any outlier are shown as a green connector. Residues present in the sample, but not in the model, are shown in grey.

- Molecule 1: Toll-like receptor 8



- Molecule 1: Toll-like receptor 8





- Molecule 2: beta-D-mannopyranose-(1-4)-2-acetamido-2-deoxy-beta-D-glucopyranose-(1-4)-2-acetamido-2-deoxy-beta-D-glucopyranose

Chain C: 67% 33%

MAG1
MAG2
BMA3

- Molecule 3: 2-acetamido-2-deoxy-beta-D-glucopyranose-(1-4)-2-acetamido-2-deoxy-beta-D-glucopyranose

Chain D: 100%

MAG1
MAG2

- Molecule 3: 2-acetamido-2-deoxy-beta-D-glucopyranose-(1-4)-2-acetamido-2-deoxy-beta-D-glucopyranose

Chain G: 100%

MAG1
MAG2

- Molecule 4: alpha-D-mannopyranose-(1-3)-[alpha-D-mannopyranose-(1-6)]beta-D-mannopyranose-(1-4)-2-acetamido-2-deoxy-beta-D-glucopyranose-(1-4)-2-acetamido-2-deoxy-beta-D-glucopyranose

Chain E: 100%


MAG1
MAG2
BMA3
MAN4
MAN5

- Molecule 5: alpha-D-mannopyranose-(1-6)-alpha-D-mannopyranose-(1-4)-2-acetamido-2-deoxy-beta-D-glucopyranose-(1-4)-2-acetamido-2-deoxy-beta-D-glucopyranose

Chain F:  75% 25%

MAG1
MAG2
MAN3
MAN4

- Molecule 6: alpha-D-mannopyranose-(1-6)-beta-D-mannopyranose-(1-4)-2-acetamido-2-deoxy-beta-D-glucopyranose-(1-4)-2-acetamido-2-deoxy-beta-D-glucopyranose

Chain H:  75% 25%

MAG1
MAG2
BGA3
MAN4

4 Data and refinement statistics

Property	Value	Source
Space group	C 1 2 1	Depositor
Cell constants a, b, c, α , β , γ	143.51Å 99.00Å 139.49Å 90.00° 108.51° 90.00°	Depositor
Resolution (Å)	44.09 – 2.80 44.09 – 2.80	Depositor EDS
% Data completeness (in resolution range)	100.0 (44.09-2.80) 100.0 (44.09-2.80)	Depositor EDS
R_{merge}	(Not available)	Depositor
R_{sym}	(Not available)	Depositor
$\langle I/\sigma(I) \rangle$ ¹	2.13 (at 2.81Å)	Xtrriage
Refinement program	REFMAC 5.8.0073	Depositor
R, R_{free}	0.201 , 0.277 0.203 , 0.272	Depositor DCC
R_{free} test set	2310 reflections (5.05%)	wwPDB-VP
Wilson B-factor (Å ²)	68.4	Xtrriage
Anisotropy	0.040	Xtrriage
Bulk solvent k_{sol} (e/Å ³), B_{sol} (Å ²)	0.33 , 41.9	EDS
L-test for twinning ²	$\langle L \rangle = 0.49$, $\langle L^2 \rangle = 0.32$	Xtrriage
Estimated twinning fraction	No twinning to report.	Xtrriage
F_o, F_c correlation	0.94	EDS
Total number of atoms	12281	wwPDB-VP
Average B, all atoms (Å ²)	71.0	wwPDB-VP

Xtrriage's analysis on translational NCS is as follows: *The largest off-origin peak in the Patterson function is 3.44% of the height of the origin peak. No significant pseudotranslation is detected.*

¹Intensities estimated from amplitudes.

²Theoretical values of $\langle |L| \rangle$, $\langle L^2 \rangle$ for acentric reflections are 0.5, 0.333 respectively for untwinned datasets, and 0.375, 0.2 for perfectly twinned datasets.

5 Model quality [i](#)

5.1 Standard geometry [i](#)

Bond lengths and bond angles in the following residue types are not validated in this section: 7VC, BMA, NAG, MAN

The Z score for a bond length (or angle) is the number of standard deviations the observed value is removed from the expected value. A bond length (or angle) with $|Z| > 5$ is considered an outlier worth inspection. RMSZ is the root-mean-square of all Z scores of the bond lengths (or angles).

Mol	Chain	Bond lengths		Bond angles	
		RMSZ	# Z >5	RMSZ	# Z >5
1	A	0.53	0/6102	0.75	1/8275 (0.0%)
1	B	0.51	0/6036	0.74	1/8183 (0.0%)
All	All	0.52	0/12138	0.75	2/16458 (0.0%)

Chiral center outliers are detected by calculating the chiral volume of a chiral center and verifying if the center is modelled as a planar moiety or with the opposite hand. A planarity outlier is detected by checking planarity of atoms in a peptide group, atoms in a mainchain group or atoms of a sidechain that are expected to be planar.

Mol	Chain	#Chirality outliers	#Planarity outliers
1	B	0	1

There are no bond length outliers.

All (2) bond angle outliers are listed below:

Mol	Chain	Res	Type	Atoms	Z	Observed($^{\circ}$)	Ideal($^{\circ}$)
1	A	300	ARG	NE-CZ-NH1	6.11	123.36	120.30
1	B	300	ARG	NE-CZ-NH1	5.45	123.02	120.30

There are no chirality outliers.

All (1) planarity outliers are listed below:

Mol	Chain	Res	Type	Group
1	B	780	ILE	Peptide

5.2 Too-close contacts [i](#)

In the following table, the Non-H and H(model) columns list the number of non-hydrogen atoms and hydrogen atoms in the chain respectively. The H(added) column lists the number of hydrogen

atoms added and optimized by MolProbity. The Clashes column lists the number of clashes within the asymmetric unit, whereas Symm-Clashes lists symmetry related clashes.

Mol	Chain	Non-H	H(model)	H(added)	Clashes	Symm-Clashes
1	A	5980	0	5973	84	1
1	B	5915	0	5906	90	1
2	C	39	0	34	2	0
3	D	28	0	25	0	0
3	G	28	0	25	0	0
4	E	61	0	52	0	0
5	F	50	0	43	1	0
6	H	50	0	43	2	0
7	A	40	0	0	1	0
8	A	28	0	26	0	0
8	B	14	0	13	1	0
9	A	28	0	0	1	0
9	B	20	0	0	1	0
All	All	12281	0	12140	174	2

The all-atom clashscore is defined as the number of clashes found per 1000 atoms (including hydrogen atoms). The all-atom clashscore for this structure is 7.

All (174) close contacts within the same asymmetric unit are listed below, sorted by their clash magnitude.

Atom-1	Atom-2	Interatomic distance (Å)	Clash overlap (Å)
1:A:708:SER:OG	1:A:734:GLU:O	1.90	0.90
1:B:750:THR:OG1	1:B:780:ILE:HG21	1.76	0.84
1:A:478:GLN:HE21	1:A:478:GLN:H	1.25	0.83
1:B:478:GLN:HE21	1:B:478:GLN:H	1.33	0.76
1:A:159:TYR:CD1	1:A:187:CYS:HB3	2.20	0.76
1:B:703:LEU:HD21	1:B:724:ILE:HD13	1.69	0.74
1:B:807:GLY:HA3	1:B:810:ARG:H	1.53	0.72
1:A:467:PHE:HB3	2:C:1:NAG:H81	1.72	0.72
1:B:319:GLU:OE1	1:B:469:HIS:HB2	1.93	0.68
1:B:750:THR:HG1	1:B:780:ILE:HG21	1.58	0.66
1:A:732:LEU:HA	1:A:735:VAL:HG13	1.78	0.65
1:B:626:ASP:OD1	1:B:630:ARG:NH1	2.30	0.64
1:A:276:ILE:HD11	1:A:299:LEU:HD21	1.79	0.64
1:A:34:TYR:O	1:A:60:THR:OG1	2.16	0.62
1:A:538:THR:HG22	1:A:562:SER:HB2	1.83	0.61
1:A:428:ASN:O	1:A:491:ASN:HA	2.01	0.60
1:A:807:GLY:HA2	1:A:809:GLN:N	2.16	0.60
1:B:578:GLU:HG2	1:B:602:LYS:HE2	1.83	0.60

Continued on next page...

Continued from previous page...

Atom-1	Atom-2	Interatomic distance (Å)	Clash overlap (Å)
1:A:581:GLN:HA	1:A:606:GLU:O	2.01	0.59
1:B:467:PHE:HB2	5:F:1:NAG:H81	1.85	0.59
1:A:184:ASN:ND2	1:A:186:VAL:O	2.36	0.59
1:B:797:ARG:NH1	1:B:800:ASP:OD2	2.35	0.58
1:B:413:LEU:HD12	1:B:413:LEU:C	2.23	0.58
1:B:526:PHE:HB3	1:B:553:LEU:HD21	1.84	0.58
1:B:807:GLY:HA2	1:B:809:GLN:N	2.19	0.58
1:B:413:LEU:HD12	1:B:414:PHE:N	2.19	0.58
1:A:276:ILE:CG1	1:A:297:THR:HB	2.35	0.57
1:A:373:HIS:HA	1:A:400:ASN:HB3	1.86	0.56
1:B:537:LEU:HB3	1:B:542:LEU:HD11	1.86	0.56
1:B:433:LEU:HD12	1:B:500:GLN:HA	1.88	0.56
1:A:621:ASP:OD1	1:A:622:ILE:N	2.39	0.56
1:A:319:GLU:HG2	9:A:1019:HOH:O	2.07	0.55
1:A:300:ARG:HG2	1:A:300:ARG:HH11	1.72	0.55
1:A:276:ILE:HG13	1:A:297:THR:HB	1.89	0.54
1:B:777:THR:OG1	1:B:779:ASP:OD1	2.23	0.54
1:A:167:SER:OG	1:A:199:THR:OG1	2.24	0.54
1:B:780:ILE:HG22	1:B:780:ILE:O	2.07	0.54
1:B:479:CYS:SG	1:B:534:TYR:CD1	3.02	0.53
1:A:703:LEU:HD21	1:A:724:ILE:CD1	2.38	0.53
1:B:566:HIS:HB2	1:B:573:VAL:HG21	1.92	0.52
1:A:315:VAL:HG22	1:A:341:ILE:HB	1.91	0.52
1:B:272:GLY:O	1:B:274:ALA:N	2.42	0.52
1:B:686:GLN:HG3	1:B:686:GLN:O	2.10	0.51
1:A:193:GLU:O	1:A:196:VAL:HG23	2.10	0.51
1:A:740:HIS:NE2	1:A:768:GLU:OE2	2.41	0.51
1:B:624:TRP:CZ3	1:B:654:ILE:HG23	2.46	0.51
1:A:634:ILE:HD12	1:A:635:PHE:CE2	2.46	0.51
1:B:501:PHE:HA	1:B:504:LEU:HD22	1.92	0.51
1:B:543:ASP:OD2	1:B:543:ASP:C	2.47	0.50
1:A:197:PHE:O	1:A:198:GLU:HB3	2.11	0.50
1:B:336:LEU:HD13	1:B:339:LEU:HD22	1.94	0.50
1:A:660:LEU:HD21	1:A:683:LEU:HD22	1.94	0.50
1:B:780:ILE:HD12	1:B:780:ILE:N	2.27	0.50
1:A:817:LEU:HD13	1:A:817:LEU:N	2.26	0.49
1:A:237:ILE:HB	1:A:278:ILE:HG23	1.93	0.49
1:A:364:SER:HA	1:A:393:LEU:HD21	1.94	0.49
1:A:494:PHE:O	1:A:517:ASN:HA	2.11	0.49
1:B:155:GLN:HA	1:B:179:TRP:O	2.12	0.49
1:A:467:PHE:CB	2:C:1:NAG:H81	2.42	0.49

Continued on next page...

Continued from previous page...

Atom-1	Atom-2	Interatomic distance (Å)	Clash overlap (Å)
1:B:314:LYS:C	1:B:339:LEU:HD12	2.33	0.49
1:A:276:ILE:CD1	1:A:299:LEU:HD21	2.42	0.49
1:B:310:MET:N	1:B:311:PRO:CD	2.74	0.49
1:A:807:GLY:HA2	1:A:808:ASP:C	2.33	0.48
1:A:803:CYS:O	1:A:810:ARG:HA	2.13	0.48
1:B:774:PHE:CG	1:B:814:ILE:HD11	2.48	0.48
1:A:379:PHE:CZ	1:A:406:ILE:HD11	2.49	0.48
1:A:49:CYS:HB3	1:A:70:LEU:HD23	1.96	0.48
1:B:682:THR:HG22	1:B:710:PHE:CZ	2.48	0.48
1:A:645:ASP:HA	1:A:670:HIS:HB2	1.95	0.48
1:B:154:ILE:HD11	1:B:176:TYR:HB3	1.95	0.48
1:B:542:LEU:N	1:B:564:ASN:HD21	2.12	0.48
1:A:256:ASN:O	1:A:276:ILE:HG23	2.14	0.48
1:B:211:ASN:O	1:B:232:THR:HA	2.14	0.48
1:A:585:ASN:O	1:A:587:LYS:HD2	2.14	0.47
1:A:161:ILE:HD12	1:A:177:LEU:HD13	1.96	0.47
1:B:118:ASP:C	1:B:118:ASP:OD2	2.53	0.47
1:B:475:ILE:O	1:B:476:LYS:C	2.51	0.47
1:B:803:CYS:SG	1:B:817:LEU:HD21	2.55	0.47
1:B:544:PHE:CE2	1:B:561:LEU:HD13	2.49	0.47
1:B:225:ARG:HA	1:B:248:LEU:HA	1.96	0.47
1:B:720:SER:HA	1:B:744:SER:O	2.15	0.47
1:B:93:ASN:C	1:B:93:ASN:OD1	2.53	0.47
1:A:784:ARG:HD3	1:A:814:ILE:O	2.15	0.47
1:A:276:ILE:HD13	1:A:278:ILE:HD11	1.96	0.46
1:A:300:ARG:CG	1:A:300:ARG:HH11	2.28	0.46
1:B:592:SER:HA	1:B:616:SER:O	2.16	0.46
1:B:577:LEU:HD12	1:B:605:LEU:HD11	1.98	0.46
1:B:493:ILE:O	1:B:517:ASN:ND2	2.42	0.46
1:B:578:GLU:HG2	1:B:602:LYS:CE	2.44	0.46
1:B:300:ARG:HH11	1:B:300:ARG:HG2	1.80	0.46
1:B:720:SER:HB3	1:B:742:ASP:OD2	2.16	0.46
1:B:817:LEU:HD13	1:B:817:LEU:N	2.30	0.46
1:A:57:VAL:HG21	1:A:82:SER:HB3	1.98	0.46
1:B:630:ARG:HB2	1:B:630:ARG:HH11	1.81	0.46
1:A:141:PRO:HB2	1:A:144:LEU:HD21	1.98	0.46
1:A:234:ILE:O	1:A:256:ASN:HB3	2.16	0.46
1:A:815:VAL:HG12	1:A:815:VAL:O	2.16	0.46
1:B:178:ALA:HA	1:B:209:SER:O	2.16	0.46
1:A:776:CYS:SG	1:A:814:ILE:HG22	2.56	0.45
1:B:782:ASP:HA	1:B:785:ARG:NH2	2.32	0.45

Continued on next page...

Continued from previous page...

Atom-1	Atom-2	Interatomic distance (Å)	Clash overlap (Å)
1:A:296:SER:HA	1:A:320:PHE:O	2.17	0.45
1:B:227:LEU:HD21	1:B:229:LEU:HD11	1.99	0.45
1:A:187:CYS:SG	1:A:189:LYS:C	2.95	0.45
1:B:399:ILE:HG13	1:B:420:LEU:HD21	1.99	0.45
1:A:592:SER:HA	1:A:616:SER:O	2.17	0.45
1:A:366:LEU:O	1:A:393:LEU:HD22	2.17	0.45
1:B:250:LEU:HD23	1:B:250:LEU:C	2.37	0.45
1:B:250:LEU:HA	1:B:291:TYR:HB2	1.99	0.45
1:A:211:ASN:O	1:A:232:THR:HA	2.16	0.44
1:A:319:GLU:HA	1:A:345:SER:O	2.17	0.44
1:A:403:ILE:HA	1:A:427:GLU:O	2.17	0.44
1:B:278:ILE:HB	1:B:306:TRP:CZ2	2.52	0.44
1:B:205:LEU:C	1:B:205:LEU:HD23	2.38	0.44
1:B:357:ILE:HG13	1:B:377:TYR:CZ	2.53	0.44
1:B:584:THR:HG23	1:B:585:ASN:ND2	2.33	0.44
1:B:608:LYS:O	8:B:911:NAG:H82	2.18	0.44
1:A:336:LEU:HD13	1:A:339:LEU:HD22	1.99	0.44
1:B:249:THR:HG22	1:B:290:ARG:HG2	2.00	0.44
1:A:403:ILE:O	1:A:403:ILE:HG12	2.18	0.44
1:A:81:GLU:OE1	1:A:84:GLN:NE2	2.51	0.44
1:B:739:LYS:NZ	1:B:763:LYS:O	2.48	0.44
1:A:276:ILE:HD13	1:A:278:ILE:CD1	2.48	0.43
1:B:799:VAL:O	1:B:802:ILE:HD11	2.19	0.43
1:A:489:SER:HA	1:A:513:SER:O	2.18	0.43
1:A:733:SER:HA	1:A:734:GLU:HA	1.83	0.43
1:A:179:TRP:HE3	1:A:182:TYR:CZ	2.36	0.43
1:A:197:PHE:O	1:A:198:GLU:CB	2.66	0.43
1:B:603:TYR:HD2	1:B:631:TYR:CE1	2.36	0.43
1:A:159:TYR:CG	1:A:187:CYS:HB3	2.54	0.43
1:B:478:GLN:NE2	1:B:478:GLN:H	2.11	0.43
1:A:276:ILE:HG12	1:A:297:THR:HB	2.00	0.43
1:A:727:LEU:HD21	1:A:743:LEU:HD13	2.01	0.43
1:B:388:GLN:N	1:B:389:PRO:CD	2.81	0.43
1:B:750:THR:OG1	1:B:780:ILE:CG2	2.59	0.43
1:A:333:LEU:HB2	1:A:362:ASN:HB3	2.01	0.42
1:A:628:ASP:OD2	1:A:628:ASP:N	2.51	0.42
1:A:818:GLU:OE2	1:A:818:GLU:N	2.52	0.42
1:B:575:HIS:CE1	1:B:596:ILE:HG12	2.54	0.42
1:A:395:ASN:HA	1:A:419:ASN:HD22	1.84	0.42
1:A:642:THR:HB	1:A:667:THR:HB	2.01	0.42
1:B:428:ASN:O	1:B:491:ASN:HA	2.19	0.42

Continued on next page...

Continued from previous page...

Atom-1	Atom-2	Interatomic distance (Å)	Clash overlap (Å)
1:B:156:ASN:O	1:B:180:ASN:HA	2.19	0.42
1:A:188:GLU:CD	1:A:188:GLU:H	2.22	0.42
1:A:289:LEU:HA	1:A:289:LEU:HD12	1.89	0.42
1:B:124:LEU:HB3	9:B:1004:HOH:O	2.18	0.42
1:B:703:LEU:HD21	1:B:724:ILE:CD1	2.45	0.42
1:B:566:HIS:CB	1:B:573:VAL:HG21	2.49	0.42
1:B:182:TYR:N	1:B:182:TYR:CD1	2.88	0.42
1:B:296:SER:HA	1:B:320:PHE:O	2.20	0.42
1:B:83:PHE:O	1:B:123:ASN:ND2	2.53	0.42
1:A:187:CYS:SG	1:A:189:LYS:N	2.93	0.41
1:B:300:ARG:O	1:B:301:LYS:HE2	2.20	0.41
1:B:562:SER:HB2	6:H:1:NAG:H82	2.02	0.41
1:A:203:LEU:HD21	1:A:206:LEU:HB2	2.02	0.41
1:A:536:ASP:OD1	1:A:536:ASP:C	2.59	0.41
1:B:802:ILE:HD13	1:B:813:SER:HA	2.02	0.41
1:B:69:ASP:C	1:B:69:ASP:OD1	2.59	0.41
1:B:774:PHE:CD1	1:B:814:ILE:HD11	2.55	0.41
1:A:403:ILE:HD11	7:A:901:7VC:O1	2.21	0.41
1:B:328:ALA:O	1:B:360:SER:HB2	2.21	0.41
1:B:692:LEU:HD23	1:B:692:LEU:C	2.40	0.41
1:B:319:GLU:CD	1:B:469:HIS:HB2	2.40	0.41
1:B:260:CYS:SG	1:B:267:CYS:C	2.99	0.41
1:A:46:ILE:HD11	1:A:67:GLU:CD	2.42	0.41
1:A:342:LEU:HD21	1:A:344:LEU:HD11	2.03	0.40
1:A:236:TYR:HA	1:A:277:ASN:O	2.20	0.40
1:B:733:SER:HA	1:B:734:GLU:HA	1.69	0.40
1:B:400:ASN:C	1:B:400:ASN:OD1	2.60	0.40
1:B:628:ASP:HB2	1:B:630:ARG:CD	2.52	0.40
1:A:186:VAL:HA	1:A:187:CYS:C	2.41	0.40
1:A:243:LYS:HG3	1:A:285:ASN:HD22	1.85	0.40
1:A:501:PHE:HA	1:A:504:LEU:HD22	2.04	0.40
1:A:575:HIS:ND1	1:A:596:ILE:HG12	2.37	0.40
1:B:562:SER:CB	6:H:1:NAG:H82	2.52	0.40

All (2) symmetry-related close contacts are listed below. The label for Atom-2 includes the symmetry operator and encoded unit-cell translations to be applied.

Atom-1	Atom-2	Interatomic distance (Å)	Clash overlap (Å)
1:B:288:GLN:NE2	1:B:712:SER:OG[4_445]	2.16	0.04
1:A:418:SER:O	1:A:715:ARG:NH2[2_454]	2.16	0.04

5.3 Torsion angles [i](#)

5.3.1 Protein backbone [i](#)

In the following table, the Percentiles column shows the percent Ramachandran outliers of the chain as a percentile score with respect to all X-ray entries followed by that with respect to entries of similar resolution.

The Analysed column shows the number of residues for which the backbone conformation was analysed, and the total number of residues.

Mol	Chain	Analysed	Favoured	Allowed	Outliers	Percentiles	
1	A	735/811 (91%)	646 (88%)	83 (11%)	6 (1%)	19	49
1	B	724/811 (89%)	635 (88%)	83 (12%)	6 (1%)	19	49
All	All	1459/1622 (90%)	1281 (88%)	166 (11%)	12 (1%)	19	49

All (12) Ramachandran outliers are listed below:

Mol	Chain	Res	Type
1	A	198	GLU
1	A	378	VAL
1	B	71	SER
1	B	378	VAL
1	B	472	ARG
1	A	808	ASP
1	A	810	ARG
1	B	696	ARG
1	B	808	ASP
1	A	672	ASN
1	A	799	VAL
1	B	686	GLN

5.3.2 Protein sidechains [i](#)

In the following table, the Percentiles column shows the percent sidechain outliers of the chain as a percentile score with respect to all X-ray entries followed by that with respect to entries of similar resolution.

The Analysed column shows the number of residues for which the sidechain conformation was analysed, and the total number of residues.

Mol	Chain	Analysed	Rotameric	Outliers	Percentiles	
1	A	690/755 (91%)	631 (91%)	59 (9%)	10	30

Continued on next page...

Continued from previous page...

Mol	Chain	Analysed	Rotameric	Outliers	Percentiles	
1	B	683/755 (90%)	638 (93%)	45 (7%)	16	44
All	All	1373/1510 (91%)	1269 (92%)	104 (8%)	13	36

All (104) residues with a non-rotameric sidechain are listed below:

Mol	Chain	Res	Type
1	A	39	LYS
1	A	44	SER
1	A	45	VAL
1	A	46	ILE
1	A	49	CYS
1	A	50	SER
1	A	56	GLU
1	A	76	THR
1	A	87	GLN
1	A	118	ASP
1	A	122	LEU
1	A	164	GLU
1	A	186	VAL
1	A	197	PHE
1	A	199	THR
1	A	212	SER
1	A	235	LYS
1	A	243	LYS
1	A	248	LEU
1	A	276	ILE
1	A	286	LEU
1	A	300	ARG
1	A	301	LYS
1	A	317	ASP
1	A	352	SER
1	A	355	GLN
1	A	361	ARG
1	A	366	LEU
1	A	367	LEU
1	A	384	GLU
1	A	385	ASP
1	A	388	GLN
1	A	410	ASP
1	A	465	SER
1	A	470	PHE
1	A	472	ARG

Continued on next page...

Continued from previous page...

Mol	Chain	Res	Type
1	A	478	GLN
1	A	504	LEU
1	A	509	CYS
1	A	567	TYR
1	A	574	THR
1	A	587	LYS
1	A	598	THR
1	A	599	LEU
1	A	627	ASP
1	A	628	ASP
1	A	634	ILE
1	A	653	HIS
1	A	667	THR
1	A	677	LYS
1	A	706	SER
1	A	708	SER
1	A	729	SER
1	A	734	GLU
1	A	766	MET
1	A	778	CYS
1	A	797	ARG
1	A	798	LEU
1	A	817	LEU
1	B	41	GLN
1	B	49	CYS
1	B	60	THR
1	B	90	THR
1	B	122	LEU
1	B	139	GLN
1	B	142	SER
1	B	167	SER
1	B	200	LEU
1	B	201	THR
1	B	235	LYS
1	B	243	LYS
1	B	249	THR
1	B	287	THR
1	B	300	ARG
1	B	301	LYS
1	B	352	SER
1	B	361	ARG
1	B	366	LEU

Continued on next page...

Continued from previous page...

Mol	Chain	Res	Type
1	B	367	LEU
1	B	385	ASP
1	B	416	ASN
1	B	466	ASN
1	B	467	PHE
1	B	470	PHE
1	B	478	GLN
1	B	502	GLU
1	B	504	LEU
1	B	581	GLN
1	B	584	THR
1	B	587	LYS
1	B	598	THR
1	B	630	ARG
1	B	634	ILE
1	B	642	THR
1	B	667	THR
1	B	671	ILE
1	B	689	ARG
1	B	706	SER
1	B	727	LEU
1	B	753	LYS
1	B	778	CYS
1	B	797	ARG
1	B	814	ILE
1	B	817	LEU

Some sidechains can be flipped to improve hydrogen bonding and reduce clashes. All (21) such sidechains are listed below:

Mol	Chain	Res	Type
1	A	96	HIS
1	A	233	GLN
1	A	285	ASN
1	A	419	ASN
1	A	478	GLN
1	A	539	ASN
1	A	581	GLN
1	A	593	HIS
1	A	752	ASN
1	B	41	GLN
1	B	84	GLN
1	B	155	GLN

Continued on next page...

Continued from previous page...

Mol	Chain	Res	Type
1	B	233	GLN
1	B	288	GLN
1	B	478	GLN
1	B	531	HIS
1	B	564	ASN
1	B	566	HIS
1	B	585	ASN
1	B	604	ASN
1	B	661	ASN

5.3.3 RNA [i](#)

There are no RNA molecules in this entry.

5.4 Non-standard residues in protein, DNA, RNA chains [i](#)

19 non-standard protein/DNA/RNA residues are modelled in this entry.

In the following table, the Counts columns list the number of bonds (or angles) for which Mogul statistics could be retrieved, the number of bonds (or angles) that are observed in the model and the number of bonds (or angles) that are defined in the Chemical Component Dictionary. The Link column lists molecule types, if any, to which the group is linked. The Z score for a bond length (or angle) is the number of standard deviations the observed value is removed from the expected value. A bond length (or angle) with $|Z| > 2$ is considered an outlier worth inspection. RMSZ is the root-mean-square of all Z scores of the bond lengths (or angles).

Mol	Type	Chain	Res	Link	Bond lengths			Bond angles		
					Counts	RMSZ	# Z > 2	Counts	RMSZ	# Z > 2
4	MAN	E	4	4	11,11,12	0.52	0	15,15,17	1.89	2 (13%)
5	MAN	F	4	5	11,11,12	0.58	0	15,15,17	1.38	3 (20%)
3	NAG	G	2	3	14,14,15	0.78	0	17,19,21	1.23	3 (17%)
6	NAG	H	2	6	14,14,15	0.99	1 (7%)	17,19,21	1.38	2 (11%)
8	NAG	A	905	1	14,14,15	0.48	0	17,19,21	1.45	2 (11%)
3	NAG	D	2	3	14,14,15	0.67	0	17,19,21	1.59	3 (17%)
6	NAG	H	1	1,6	14,14,15	0.78	0	17,19,21	1.30	1 (5%)
5	NAG	F	1	1,5	14,14,15	0.64	0	17,19,21	1.35	4 (23%)
3	NAG	D	1	1,3	14,14,15	0.71	0	17,19,21	1.62	6 (35%)
3	NAG	G	1	1,3	14,14,15	0.73	0	17,19,21	1.72	4 (23%)
5	NAG	F	2	5	14,14,15	0.71	0	17,19,21	2.23	7 (41%)
2	NAG	C	1	1,2	14,14,15	0.64	0	17,19,21	1.45	4 (23%)

Mol	Type	Chain	Res	Link	Bond lengths			Bond angles		
					Counts	RMSZ	# Z > 2	Counts	RMSZ	# Z > 2
8	NAG	B	911	1	14,14,15	0.70	0	17,19,21	1.17	1 (5%)
4	MAN	E	5	4	11,11,12	0.52	0	15,15,17	1.56	1 (6%)
4	NAG	E	2	4	14,14,15	1.12	1 (7%)	17,19,21	1.84	4 (23%)
8	NAG	A	913	1	14,14,15	0.58	0	17,19,21	1.01	1 (5%)
4	NAG	E	1	1,4	14,14,15	0.90	1 (7%)	17,19,21	1.51	3 (17%)
2	NAG	C	2	2	14,14,15	0.82	0	17,19,21	1.43	3 (17%)
6	MAN	H	4	6	11,11,12	0.83	0	15,15,17	1.19	2 (13%)

In the following table, the Chirals column lists the number of chiral outliers, the number of chiral centers analysed, the number of these observed in the model and the number defined in the Chemical Component Dictionary. Similar counts are reported in the Torsion and Rings columns. '-' means no outliers of that kind were identified.

Mol	Type	Chain	Res	Link	Chirals	Torsions	Rings
4	MAN	E	4	4	-	0/2/19/22	0/1/1/1
5	MAN	F	4	5	-	0/2/19/22	0/1/1/1
3	NAG	G	2	3	-	0/6/23/26	0/1/1/1
6	NAG	H	2	6	-	0/6/23/26	0/1/1/1
8	NAG	A	905	1	-	2/6/23/26	0/1/1/1
3	NAG	D	2	3	-	2/6/23/26	0/1/1/1
6	NAG	H	1	1,6	-	0/6/23/26	0/1/1/1
5	NAG	F	1	1,5	-	2/6/23/26	0/1/1/1
3	NAG	D	1	1,3	-	0/6/23/26	0/1/1/1
3	NAG	G	1	1,3	-	0/6/23/26	0/1/1/1
5	NAG	F	2	5	-	0/6/23/26	0/1/1/1
2	NAG	C	1	1,2	-	0/6/23/26	0/1/1/1
8	NAG	B	911	1	-	0/6/23/26	0/1/1/1
4	MAN	E	5	4	-	1/2/19/22	0/1/1/1
4	NAG	E	2	4	-	0/6/23/26	0/1/1/1
8	NAG	A	913	1	-	0/6/23/26	0/1/1/1
4	NAG	E	1	1,4	-	0/6/23/26	0/1/1/1
2	NAG	C	2	2	-	0/6/23/26	0/1/1/1
6	MAN	H	4	6	-	0/2/19/22	0/1/1/1

All (3) bond length outliers are listed below:

Mol	Chain	Res	Type	Atoms	Z	Observed(Å)	Ideal(Å)
4	E	1	NAG	O5-C1	-2.38	1.39	1.43
6	H	2	NAG	O5-C1	-2.35	1.40	1.43
4	E	2	NAG	O5-C1	-2.24	1.40	1.43

All (56) bond angle outliers are listed below:

Mol	Chain	Res	Type	Atoms	Z	Observed(°)	Ideal(°)
4	E	4	MAN	C1-O5-C5	5.92	120.22	112.19
5	F	2	NAG	O4-C4-C3	4.65	121.09	110.35
4	E	5	MAN	O5-C5-C6	4.22	113.82	107.20
5	F	2	NAG	O5-C1-C2	-4.18	104.69	111.29
4	E	2	NAG	O3-C3-C2	3.91	117.55	109.47
3	D	2	NAG	C1-O5-C5	3.90	117.47	112.19
8	A	905	NAG	C1-O5-C5	3.72	117.23	112.19
3	G	1	NAG	O7-C7-C8	-3.67	115.25	122.06
3	G	1	NAG	O7-C7-N2	3.41	128.22	121.95
4	E	1	NAG	O7-C7-C8	-3.41	115.72	122.06
5	F	4	MAN	C1-O5-C5	3.39	116.79	112.19
8	A	905	NAG	O5-C5-C6	3.27	112.34	107.20
5	F	2	NAG	C3-C4-C5	-3.21	104.52	110.24
8	B	911	NAG	C1-C2-N2	-3.14	105.13	110.49
4	E	2	NAG	O4-C4-C5	-2.96	101.94	109.30
2	C	2	NAG	O4-C4-C5	2.92	116.55	109.30
3	D	2	NAG	O4-C4-C5	2.90	116.50	109.30
3	G	2	NAG	O4-C4-C5	2.86	116.40	109.30
5	F	4	MAN	O5-C5-C6	2.83	111.64	107.20
4	E	1	NAG	O3-C3-C2	-2.83	103.61	109.47
6	H	2	NAG	C4-C3-C2	-2.80	106.92	111.02
3	D	1	NAG	O7-C7-N2	2.77	127.04	121.95
5	F	1	NAG	C1-C2-N2	2.77	115.21	110.49
4	E	2	NAG	O7-C7-C8	-2.69	117.06	122.06
2	C	2	NAG	C1-O5-C5	-2.67	108.57	112.19
5	F	2	NAG	O5-C5-C6	2.66	111.37	107.20
6	H	2	NAG	O5-C1-C2	-2.65	107.11	111.29
5	F	2	NAG	O7-C7-C8	-2.65	117.14	122.06
2	C	1	NAG	O3-C3-C4	2.63	116.44	110.35
3	D	1	NAG	C3-C4-C5	-2.61	105.58	110.24
3	D	1	NAG	O6-C6-C5	-2.60	102.37	111.29
4	E	2	NAG	O7-C7-N2	2.52	126.59	121.95
6	H	1	NAG	C1-O5-C5	2.52	115.60	112.19
2	C	2	NAG	O5-C1-C2	-2.51	107.33	111.29
6	H	4	MAN	C1-C2-C3	2.49	112.73	109.67
3	D	1	NAG	C2-N2-C7	2.41	126.33	122.90
5	F	1	NAG	O3-C3-C2	-2.40	104.49	109.47
5	F	1	NAG	O5-C1-C2	-2.40	107.50	111.29
3	G	2	NAG	O5-C1-C2	-2.40	107.50	111.29
4	E	1	NAG	C8-C7-N2	2.36	120.09	116.10
5	F	2	NAG	O3-C3-C4	2.34	115.75	110.35
3	D	2	NAG	O7-C7-C8	-2.32	117.75	122.06

Continued on next page...

Continued from previous page...

Mol	Chain	Res	Type	Atoms	Z	Observed(°)	Ideal(°)
5	F	4	MAN	O3-C3-C2	-2.31	105.58	109.99
3	G	1	NAG	C2-N2-C7	2.29	126.16	122.90
8	A	913	NAG	O5-C1-C2	-2.26	107.72	111.29
5	F	2	NAG	C1-C2-N2	2.21	114.26	110.49
3	D	1	NAG	O7-C7-C8	-2.17	118.02	122.06
2	C	1	NAG	C1-C2-N2	2.14	114.14	110.49
4	E	4	MAN	C1-C2-C3	2.12	112.27	109.67
6	H	4	MAN	O2-C2-C1	2.10	113.45	109.15
3	G	1	NAG	O3-C3-C2	-2.09	105.14	109.47
5	F	1	NAG	O6-C6-C5	-2.07	104.20	111.29
3	G	2	NAG	C1-O5-C5	2.05	114.97	112.19
2	C	1	NAG	C8-C7-N2	2.05	119.56	116.10
2	C	1	NAG	O7-C7-C8	-2.03	118.29	122.06
3	D	1	NAG	C1-C2-N2	-2.03	107.03	110.49

There are no chirality outliers.

All (7) torsion outliers are listed below:

Mol	Chain	Res	Type	Atoms
3	D	2	NAG	O5-C5-C6-O6
3	D	2	NAG	C4-C5-C6-O6
5	F	1	NAG	C4-C5-C6-O6
8	A	905	NAG	C4-C5-C6-O6
4	E	5	MAN	O5-C5-C6-O6
8	A	905	NAG	O5-C5-C6-O6
5	F	1	NAG	O5-C5-C6-O6

There are no ring outliers.

4 monomers are involved in 6 short contacts:

Mol	Chain	Res	Type	Clashes	Symm-Clashes
6	H	1	NAG	2	0
5	F	1	NAG	1	0
2	C	1	NAG	2	0
8	B	911	NAG	1	0

5.5 Carbohydrates [i](#)

20 monosaccharides are modelled in this entry.

In the following table, the Counts columns list the number of bonds (or angles) for which Mogul

statistics could be retrieved, the number of bonds (or angles) that are observed in the model and the number of bonds (or angles) that are defined in the Chemical Component Dictionary. The Link column lists molecule types, if any, to which the group is linked. The Z score for a bond length (or angle) is the number of standard deviations the observed value is removed from the expected value. A bond length (or angle) with $|Z| > 2$ is considered an outlier worth inspection. RMSZ is the root-mean-square of all Z scores of the bond lengths (or angles).

Mol	Type	Chain	Res	Link	Bond lengths			Bond angles		
					Counts	RMSZ	# $ Z > 2$	Counts	RMSZ	# $ Z > 2$
2	NAG	C	1	1,2	14,14,15	0.64	0	17,19,21	1.45	4 (23%)
2	NAG	C	2	2	14,14,15	0.82	0	17,19,21	1.43	3 (17%)
2	BMA	C	3	2	11,11,12	0.87	0	15,15,17	2.00	6 (40%)
3	NAG	D	1	1,3	14,14,15	0.71	0	17,19,21	1.62	6 (35%)
3	NAG	D	2	3	14,14,15	0.67	0	17,19,21	1.59	3 (17%)
4	NAG	E	1	1,4	14,14,15	0.90	1 (7%)	17,19,21	1.51	3 (17%)
4	NAG	E	2	4	14,14,15	1.12	1 (7%)	17,19,21	1.84	4 (23%)
4	BMA	E	3	4	11,11,12	0.53	0	15,15,17	1.42	4 (26%)
4	MAN	E	4	4	11,11,12	0.52	0	15,15,17	1.89	2 (13%)
4	MAN	E	5	4	11,11,12	0.52	0	15,15,17	1.56	1 (6%)
5	NAG	F	1	1,5	14,14,15	0.64	0	17,19,21	1.35	4 (23%)
5	NAG	F	2	5	14,14,15	0.71	0	17,19,21	2.23	7 (41%)
5	MAN	F	3	5	11,11,12	0.41	0	15,15,17	2.71	3 (20%)
5	MAN	F	4	5	11,11,12	0.58	0	15,15,17	1.38	3 (20%)
3	NAG	G	1	1,3	14,14,15	0.73	0	17,19,21	1.72	4 (23%)
3	NAG	G	2	3	14,14,15	0.78	0	17,19,21	1.23	3 (17%)
6	NAG	H	1	1,6	14,14,15	0.78	0	17,19,21	1.30	1 (5%)
6	NAG	H	2	6	14,14,15	0.99	1 (7%)	17,19,21	1.38	2 (11%)
6	BMA	H	3	6	11,11,12	0.43	0	15,15,17	1.88	4 (26%)
6	MAN	H	4	6	11,11,12	0.83	0	15,15,17	1.19	2 (13%)

In the following table, the Chirals column lists the number of chiral outliers, the number of chiral centers analysed, the number of these observed in the model and the number defined in the Chemical Component Dictionary. Similar counts are reported in the Torsion and Rings columns. '-' means no outliers of that kind were identified.

Mol	Type	Chain	Res	Link	Chirals	Torsions	Rings
2	NAG	C	1	1,2	-	0/6/23/26	0/1/1/1
2	NAG	C	2	2	-	0/6/23/26	0/1/1/1
2	BMA	C	3	2	-	1/2/19/22	0/1/1/1
3	NAG	D	1	1,3	-	0/6/23/26	0/1/1/1

Continued on next page...

Continued from previous page...

Mol	Type	Chain	Res	Link	Chirals	Torsions	Rings
3	NAG	D	2	3	-	2/6/23/26	0/1/1/1
4	NAG	E	1	1,4	-	0/6/23/26	0/1/1/1
4	NAG	E	2	4	-	0/6/23/26	0/1/1/1
4	BMA	E	3	4	-	2/2/19/22	0/1/1/1
4	MAN	E	4	4	-	0/2/19/22	0/1/1/1
4	MAN	E	5	4	-	1/2/19/22	0/1/1/1
5	NAG	F	1	1,5	-	2/6/23/26	0/1/1/1
5	NAG	F	2	5	-	0/6/23/26	0/1/1/1
5	MAN	F	3	5	-	0/2/19/22	0/1/1/1
5	MAN	F	4	5	-	0/2/19/22	0/1/1/1
3	NAG	G	1	1,3	-	0/6/23/26	0/1/1/1
3	NAG	G	2	3	-	0/6/23/26	0/1/1/1
6	NAG	H	1	1,6	-	0/6/23/26	0/1/1/1
6	NAG	H	2	6	-	0/6/23/26	0/1/1/1
6	BMA	H	3	6	-	0/2/19/22	0/1/1/1
6	MAN	H	4	6	-	0/2/19/22	0/1/1/1

All (3) bond length outliers are listed below:

Mol	Chain	Res	Type	Atoms	Z	Observed(Å)	Ideal(Å)
4	E	1	NAG	O5-C1	-2.38	1.39	1.43
6	H	2	NAG	O5-C1	-2.35	1.40	1.43
4	E	2	NAG	O5-C1	-2.24	1.40	1.43

All (69) bond angle outliers are listed below:

Mol	Chain	Res	Type	Atoms	Z	Observed(°)	Ideal(°)
5	F	3	MAN	C1-O5-C5	8.50	123.70	112.19
4	E	4	MAN	C1-O5-C5	5.92	120.22	112.19
5	F	2	NAG	O4-C4-C3	4.65	121.09	110.35
2	C	3	BMA	O5-C5-C6	4.40	114.10	107.20
6	H	3	BMA	O5-C1-C2	4.34	117.47	110.77
4	E	5	MAN	O5-C5-C6	4.22	113.82	107.20
5	F	2	NAG	O5-C1-C2	-4.18	104.69	111.29
4	E	2	NAG	O3-C3-C2	3.91	117.55	109.47
3	D	2	NAG	C1-O5-C5	3.90	117.47	112.19
5	F	3	MAN	C1-C2-C3	3.84	114.39	109.67
5	F	3	MAN	O5-C1-C2	3.70	116.48	110.77
3	G	1	NAG	O7-C7-C8	-3.67	115.25	122.06
2	C	3	BMA	C3-C4-C5	3.49	116.46	110.24
3	G	1	NAG	O7-C7-N2	3.41	128.22	121.95

Continued on next page...

Continued from previous page...

Mol	Chain	Res	Type	Atoms	Z	Observed(°)	Ideal(°)
4	E	1	NAG	O7-C7-C8	-3.41	115.72	122.06
5	F	4	MAN	C1-O5-C5	3.39	116.79	112.19
4	E	3	BMA	C3-C4-C5	3.28	116.09	110.24
5	F	2	NAG	C3-C4-C5	-3.21	104.52	110.24
6	H	3	BMA	O5-C5-C6	3.11	112.08	107.20
4	E	2	NAG	O4-C4-C5	-2.96	101.94	109.30
2	C	2	NAG	O4-C4-C5	2.92	116.55	109.30
3	D	2	NAG	O4-C4-C5	2.90	116.50	109.30
3	G	2	NAG	O4-C4-C5	2.86	116.40	109.30
5	F	4	MAN	O5-C5-C6	2.83	111.64	107.20
4	E	1	NAG	O3-C3-C2	-2.83	103.61	109.47
6	H	2	NAG	C4-C3-C2	-2.80	106.92	111.02
3	D	1	NAG	O7-C7-N2	2.77	127.04	121.95
5	F	1	NAG	C1-C2-N2	2.77	115.21	110.49
4	E	2	NAG	O7-C7-C8	-2.69	117.06	122.06
2	C	2	NAG	C1-O5-C5	-2.67	108.57	112.19
4	E	3	BMA	C1-C2-C3	-2.66	106.40	109.67
5	F	2	NAG	O5-C5-C6	2.66	111.37	107.20
6	H	2	NAG	O5-C1-C2	-2.65	107.11	111.29
5	F	2	NAG	O7-C7-C8	-2.65	117.14	122.06
2	C	1	NAG	O3-C3-C4	2.63	116.44	110.35
3	D	1	NAG	C3-C4-C5	-2.61	105.58	110.24
3	D	1	NAG	O6-C6-C5	-2.60	102.37	111.29
4	E	2	NAG	O7-C7-N2	2.52	126.59	121.95
6	H	1	NAG	C1-O5-C5	2.52	115.60	112.19
2	C	2	NAG	O5-C1-C2	-2.51	107.33	111.29
6	H	4	MAN	C1-C2-C3	2.49	112.73	109.67
2	C	3	BMA	O6-C6-C5	2.47	119.77	111.29
6	H	3	BMA	C1-O5-C5	2.43	115.48	112.19
3	D	1	NAG	C2-N2-C7	2.41	126.33	122.90
5	F	1	NAG	O3-C3-C2	-2.40	104.49	109.47
5	F	1	NAG	O5-C1-C2	-2.40	107.50	111.29
3	G	2	NAG	O5-C1-C2	-2.40	107.50	111.29
4	E	1	NAG	C8-C7-N2	2.36	120.09	116.10
5	F	2	NAG	O3-C3-C4	2.34	115.75	110.35
2	C	3	BMA	O3-C3-C2	-2.33	105.53	109.99
3	D	2	NAG	O7-C7-C8	-2.32	117.75	122.06
5	F	4	MAN	O3-C3-C2	-2.31	105.58	109.99
3	G	1	NAG	C2-N2-C7	2.29	126.16	122.90
2	C	3	BMA	O5-C1-C2	-2.23	107.34	110.77
5	F	2	NAG	C1-C2-N2	2.21	114.26	110.49
4	E	3	BMA	O2-C2-C3	2.18	114.51	110.14

Continued on next page...

Continued from previous page...

Mol	Chain	Res	Type	Atoms	Z	Observed(°)	Ideal(°)
3	D	1	NAG	O7-C7-C8	-2.17	118.02	122.06
2	C	1	NAG	C1-C2-N2	2.14	114.14	110.49
4	E	4	MAN	C1-C2-C3	2.12	112.27	109.67
6	H	3	BMA	O2-C2-C1	-2.11	104.83	109.15
6	H	4	MAN	O2-C2-C1	2.10	113.45	109.15
3	G	1	NAG	O3-C3-C2	-2.09	105.14	109.47
5	F	1	NAG	O6-C6-C5	-2.07	104.20	111.29
3	G	2	NAG	C1-O5-C5	2.05	114.97	112.19
2	C	1	NAG	C8-C7-N2	2.05	119.56	116.10
2	C	1	NAG	O7-C7-C8	-2.03	118.29	122.06
3	D	1	NAG	C1-C2-N2	-2.03	107.03	110.49
2	C	3	BMA	O3-C3-C4	2.01	115.00	110.35
4	E	3	BMA	O4-C4-C3	-2.01	105.70	110.35

There are no chirality outliers.

All (8) torsion outliers are listed below:

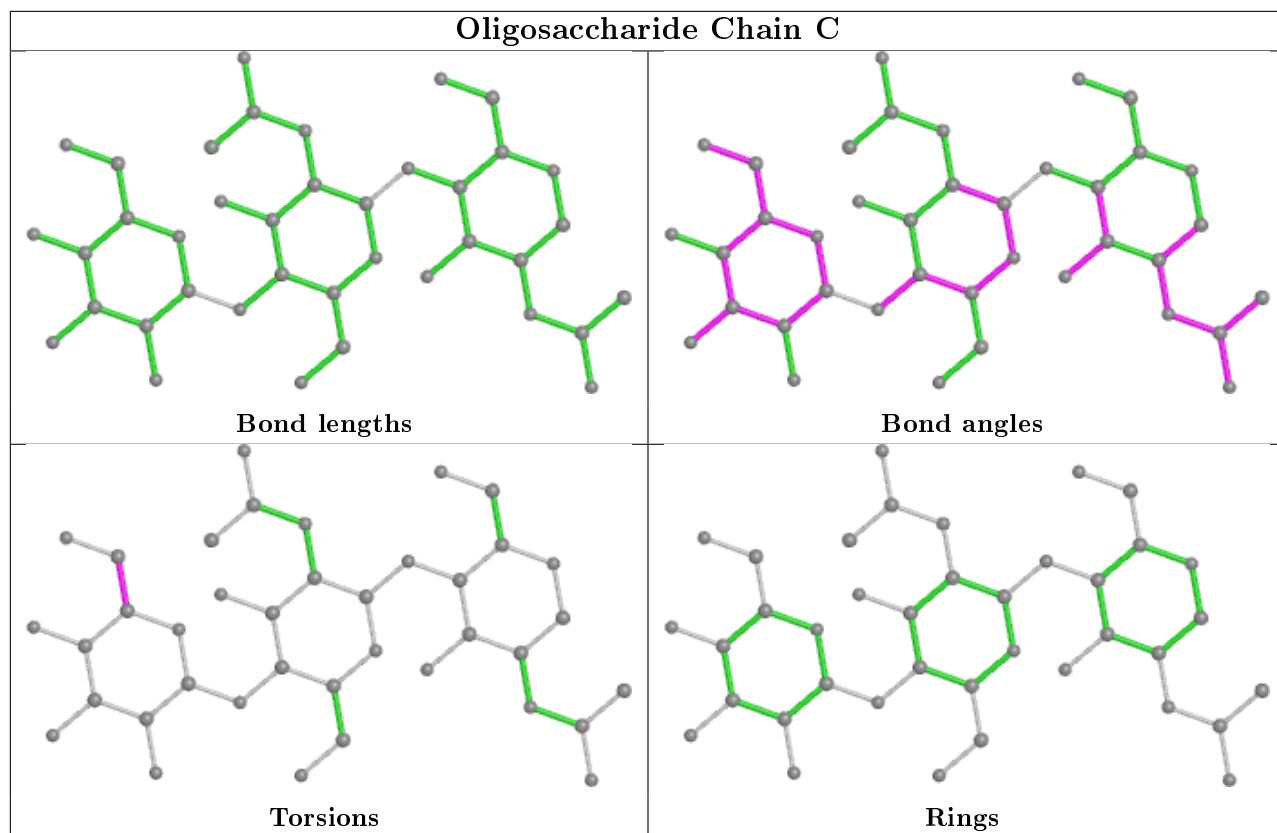
Mol	Chain	Res	Type	Atoms
3	D	2	NAG	O5-C5-C6-O6
3	D	2	NAG	C4-C5-C6-O6
5	F	1	NAG	C4-C5-C6-O6
4	E	5	MAN	O5-C5-C6-O6
2	C	3	BMA	C4-C5-C6-O6
4	E	3	BMA	C4-C5-C6-O6
4	E	3	BMA	O5-C5-C6-O6
5	F	1	NAG	O5-C5-C6-O6

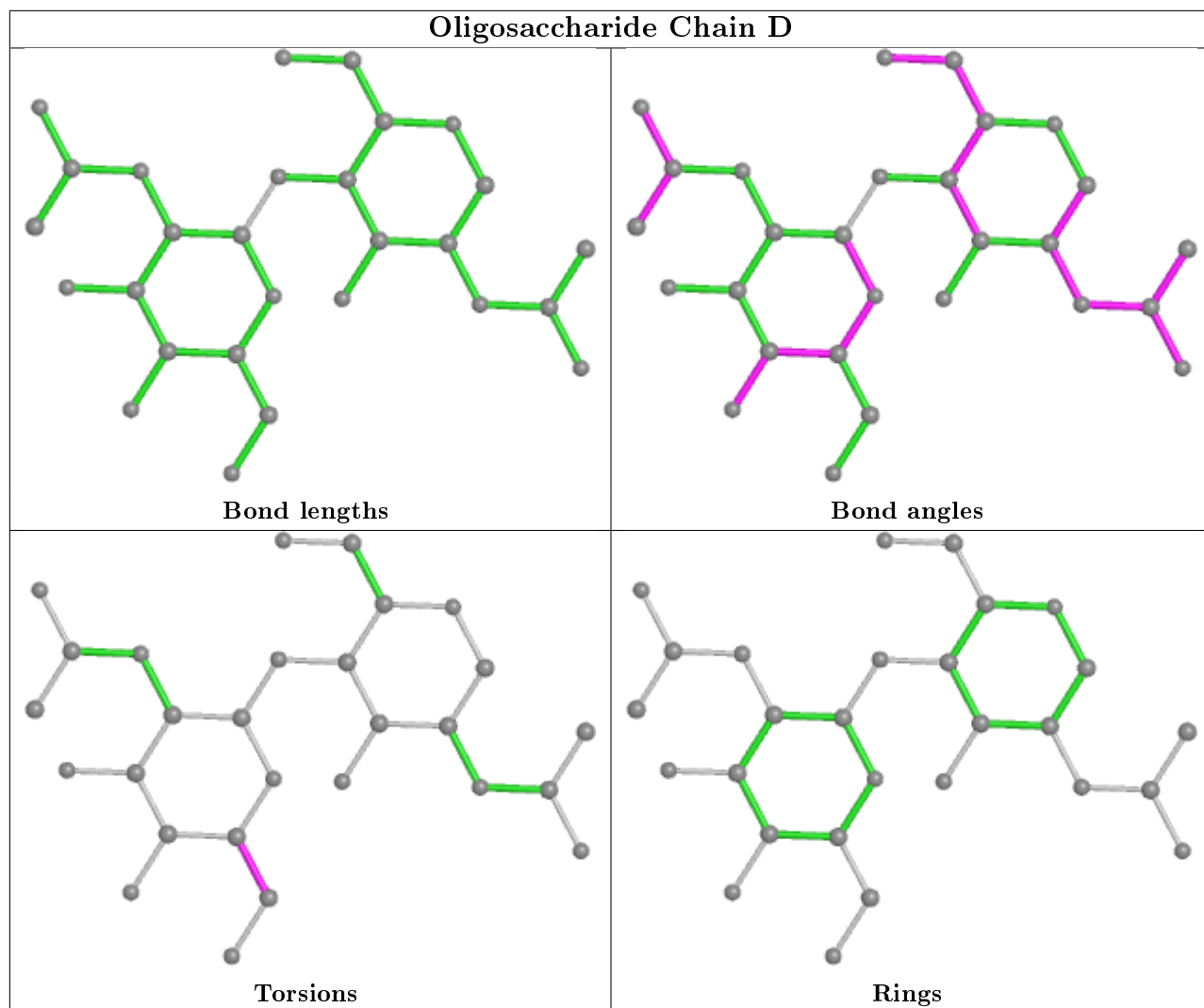
There are no ring outliers.

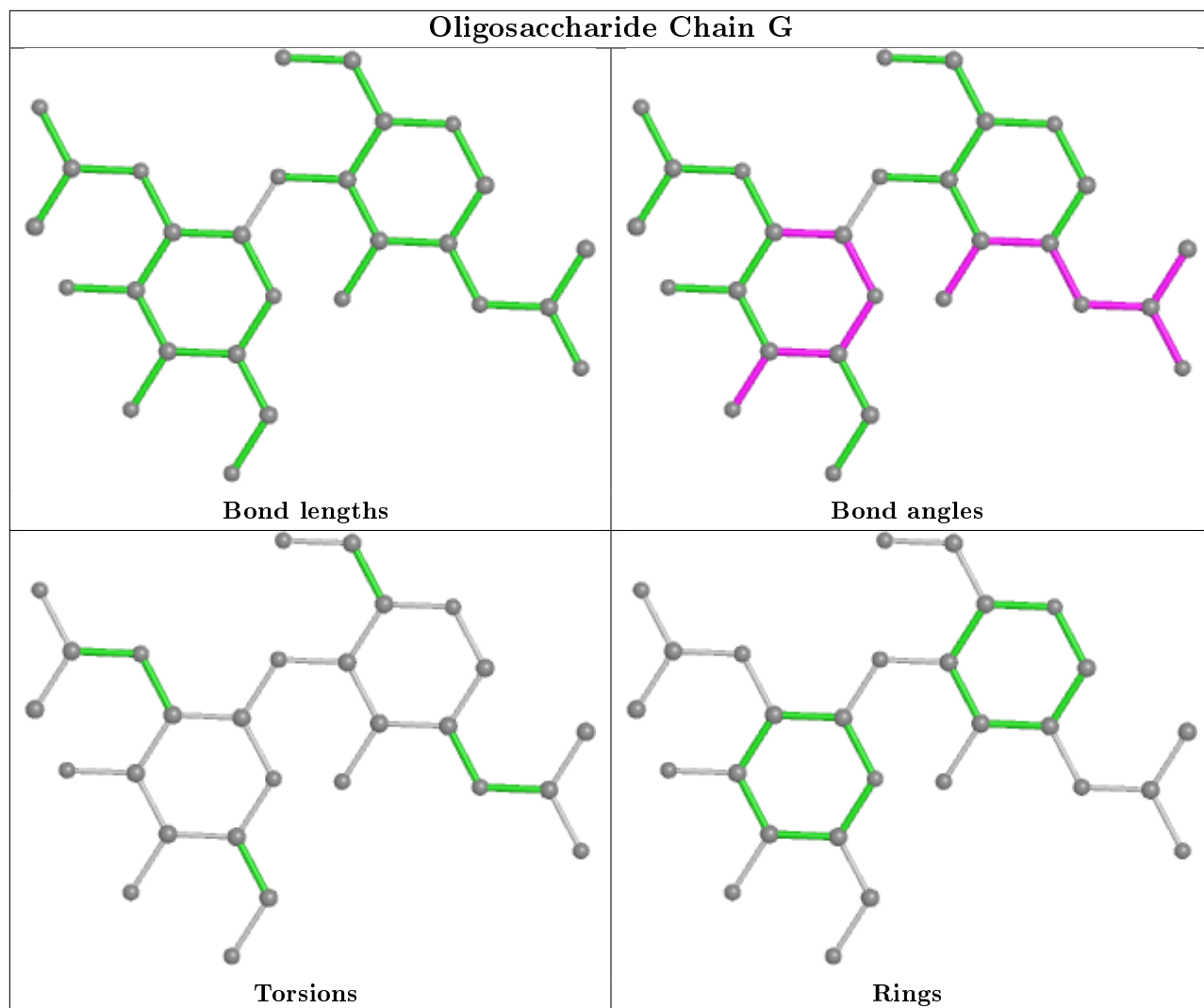
3 monomers are involved in 5 short contacts:

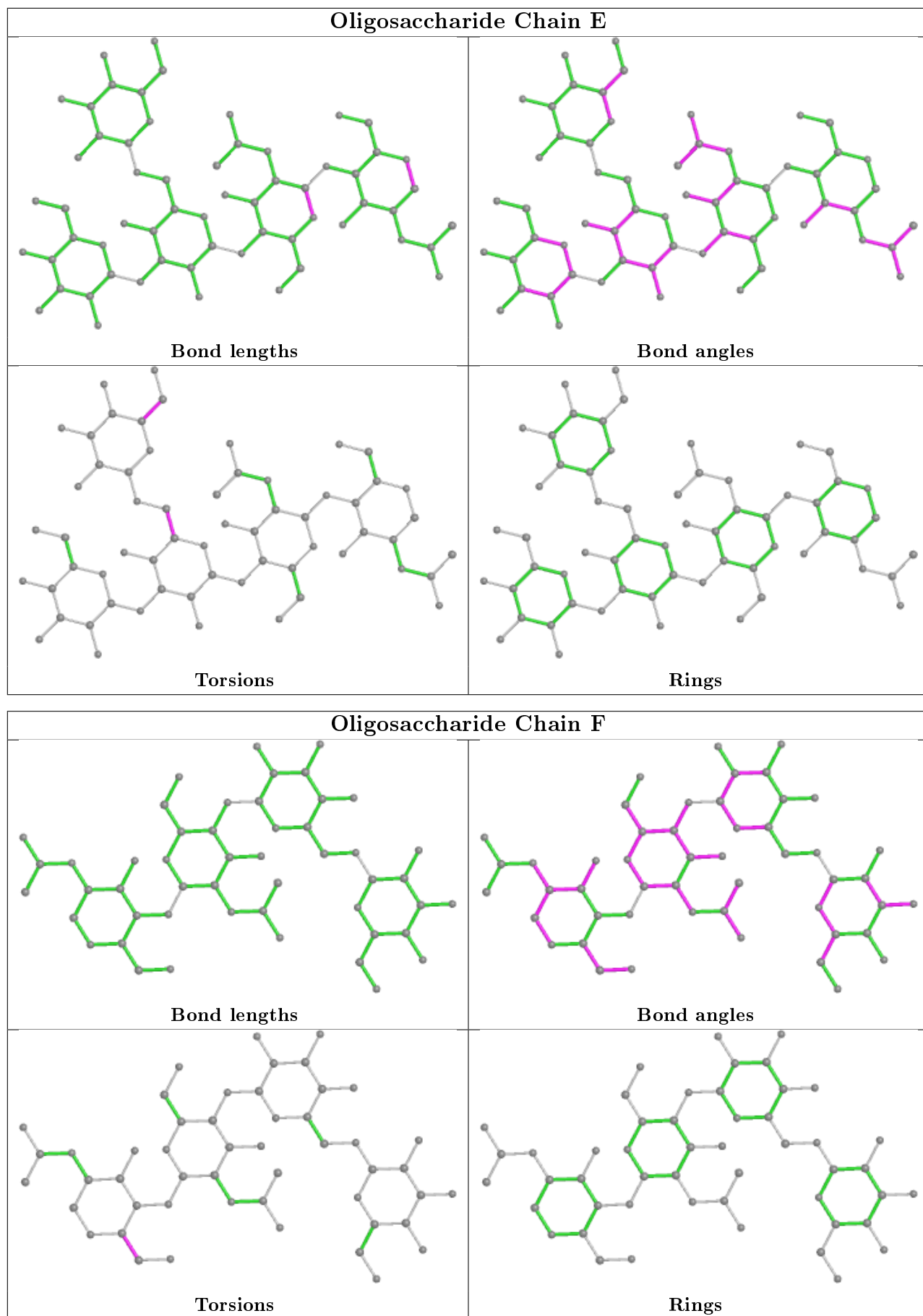
Mol	Chain	Res	Type	Clashes	Symm-Clashes
6	H	1	NAG	2	0
5	F	1	NAG	1	0
2	C	1	NAG	2	0

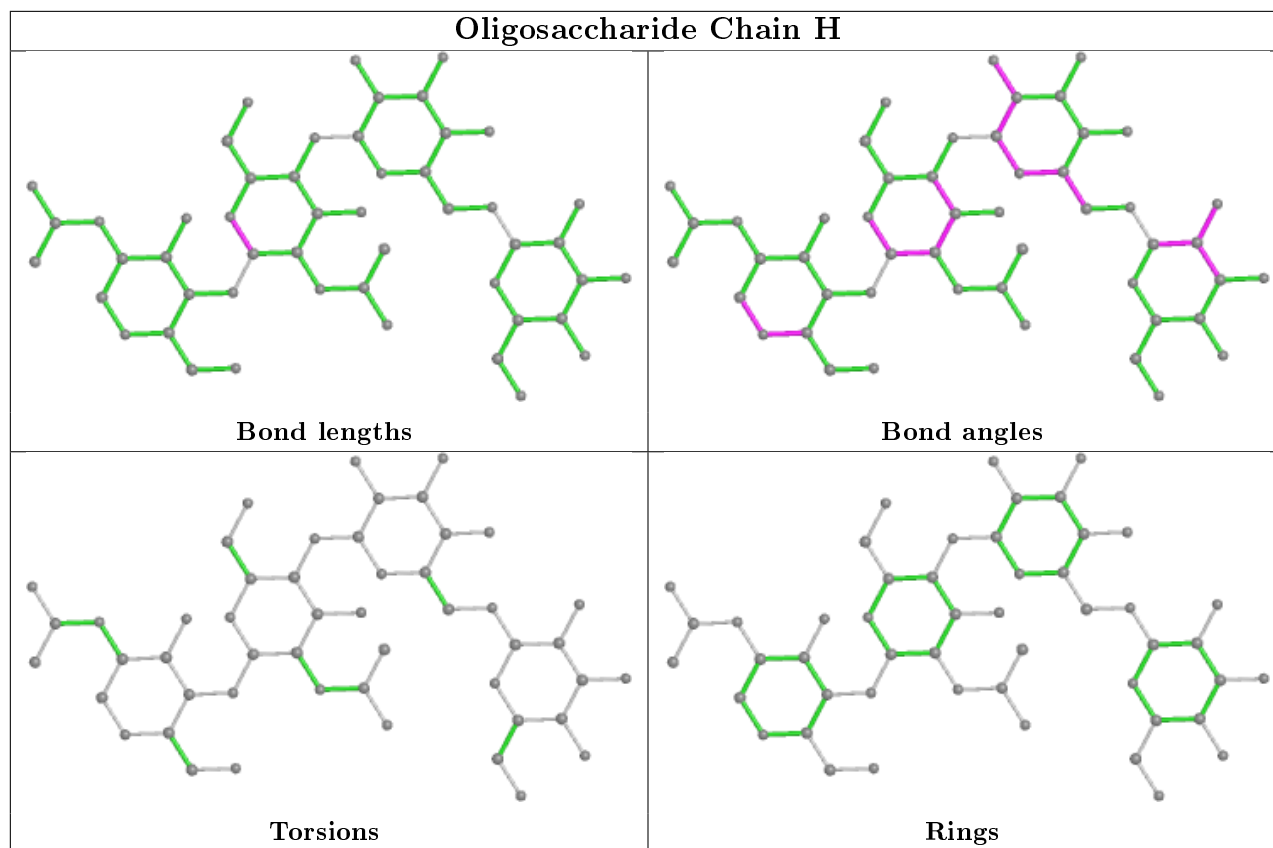
The following is a two-dimensional graphical depiction of Mogul quality analysis of bond lengths, bond angles, torsion angles, and ring geometry for oligosaccharide.











5.6 Ligand geometry [i](#)

5 ligands are modelled in this entry.

In the following table, the Counts columns list the number of bonds (or angles) for which Mogul statistics could be retrieved, the number of bonds (or angles) that are observed in the model and the number of bonds (or angles) that are defined in the Chemical Component Dictionary. The Link column lists molecule types, if any, to which the group is linked. The Z score for a bond length (or angle) is the number of standard deviations the observed value is removed from the expected value. A bond length (or angle) with $|Z| > 2$ is considered an outlier worth inspection. RMSZ is the root-mean-square of all Z scores of the bond lengths (or angles).

Mol	Type	Chain	Res	Link	Bond lengths			Bond angles		
					Counts	RMSZ	# Z > 2	Counts	RMSZ	# Z > 2
7	7VC	A	914	-	22,22,22	1.74	3 (13%)	31,31,31	1.67	8 (25%)
8	NAG	A	913	1	14,14,15	0.58	0	17,19,21	1.01	1 (5%)
8	NAG	B	911	1	14,14,15	0.70	0	17,19,21	1.17	1 (5%)
8	NAG	A	905	1	14,14,15	0.48	0	17,19,21	1.45	2 (11%)
7	7VC	A	901	-	22,22,22	1.84	3 (13%)	31,31,31	1.82	10 (32%)

In the following table, the Chirals column lists the number of chiral outliers, the number of chiral centers analysed, the number of these observed in the model and the number defined in the

Chemical Component Dictionary. Similar counts are reported in the Torsion and Rings columns. '-' means no outliers of that kind were identified.

Mol	Type	Chain	Res	Link	Chirals	Torsions	Rings
7	7VC	A	914	-	-	0/6/6/6	0/3/3/3
8	NAG	A	913	1	-	0/6/23/26	0/1/1/1
8	NAG	B	911	1	-	0/6/23/26	0/1/1/1
8	NAG	A	905	1	-	2/6/23/26	0/1/1/1
7	7VC	A	901	-	-	0/6/6/6	0/3/3/3

All (6) bond length outliers are listed below:

Mol	Chain	Res	Type	Atoms	Z	Observed(Å)	Ideal(Å)
7	A	901	7VC	C8-C7	6.86	1.49	1.40
7	A	914	7VC	C8-C7	4.96	1.46	1.40
7	A	914	7VC	C-C1	3.76	1.48	1.42
7	A	914	7VC	C2-C	3.37	1.50	1.42
7	A	901	7VC	C-C1	2.92	1.47	1.42
7	A	901	7VC	C2-C	2.05	1.47	1.42

All (22) bond angle outliers are listed below:

Mol	Chain	Res	Type	Atoms	Z	Observed(°)	Ideal(°)
7	A	901	7VC	C4-N-C1	4.16	123.37	116.93
8	A	905	NAG	C1-O5-C5	3.72	117.23	112.19
7	A	914	7VC	C-C1-N	-3.61	118.98	122.83
7	A	901	7VC	C-C1-N	-3.58	119.02	122.83
7	A	914	7VC	C2-C-C1	3.30	119.22	117.44
8	A	905	NAG	O5-C5-C6	3.27	112.34	107.20
7	A	901	7VC	C16-O-C15	3.19	124.44	117.51
8	B	911	NAG	C1-C2-N2	-3.14	105.13	110.49
7	A	914	7VC	C14-C1-N	3.13	121.54	117.97
7	A	914	7VC	C16-O-C15	3.09	124.22	117.51
7	A	901	7VC	O1-C8-C7	2.97	123.80	117.63
7	A	914	7VC	C4-N-C1	2.78	121.24	116.93
7	A	901	7VC	C9-C5-C2	-2.78	116.18	120.86
7	A	901	7VC	C5-C6-C7	-2.69	119.16	122.33
7	A	914	7VC	C6-C7-C8	2.56	119.60	117.56
7	A	901	7VC	C14-C1-N	2.54	120.87	117.97
7	A	901	7VC	C9-C5-C6	2.54	121.75	118.16
7	A	914	7VC	C11-C7-C8	-2.50	118.45	120.73
8	A	913	NAG	O5-C1-C2	-2.26	107.72	111.29
7	A	901	7VC	C2-C-C1	-2.05	116.33	117.44
7	A	914	7VC	C10-C8-C7	-2.02	118.08	120.99

Continued on next page...

Continued from previous page...

Mol	Chain	Res	Type	Atoms	Z	Observed(°)	Ideal(°)
7	A	901	7VC	C11-C7-C8	2.00	122.56	120.73

There are no chirality outliers.

All (2) torsion outliers are listed below:

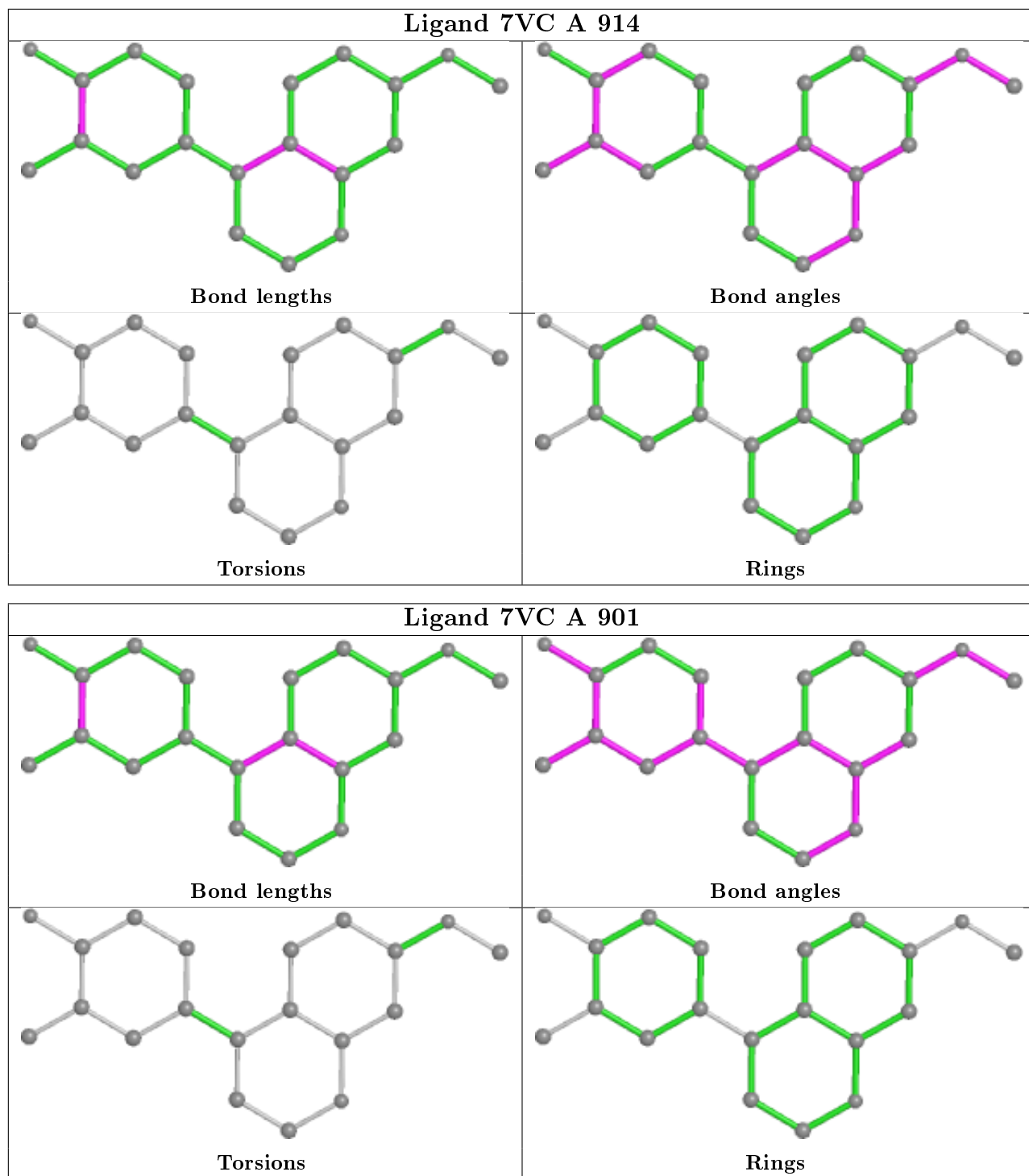
Mol	Chain	Res	Type	Atoms
8	A	905	NAG	C4-C5-C6-O6
8	A	905	NAG	O5-C5-C6-O6

There are no ring outliers.

2 monomers are involved in 2 short contacts:

Mol	Chain	Res	Type	Clashes	Symm-Clashes
8	B	911	NAG	1	0
7	A	901	7VC	1	0

The following is a two-dimensional graphical depiction of Mogul quality analysis of bond lengths, bond angles, torsion angles, and ring geometry for all instances of the Ligand of Interest. In addition, ligands with molecular weight > 250 and outliers as shown on the validation Tables will also be included. For torsion angles, if less than 5% of the Mogul distribution of torsion angles is within 10 degrees of the torsion angle in question, then that torsion angle is considered an outlier. Any bond that is central to one or more torsion angles identified as an outlier by Mogul will be highlighted in the graph. For rings, the root-mean-square deviation (RMSD) between the ring in question and similar rings identified by Mogul is calculated over all ring torsion angles. If the average RMSD is greater than 60 degrees and the minimal RMSD between the ring in question and any Mogul-identified rings is also greater than 60 degrees, then that ring is considered an outlier. The outliers are highlighted in purple. The color gray indicates Mogul did not find sufficient equivalents in the CSD to analyse the geometry.



5.7 Other polymers [i](#)

There are no such residues in this entry.

5.8 Polymer linkage issues

There are no chain breaks in this entry.

6 Fit of model and data

6.1 Protein, DNA and RNA chains

In the following table, the column labelled ‘#RSRZ> 2’ contains the number (and percentage) of RSRZ outliers, followed by percent RSRZ outliers for the chain as percentile scores relative to all X-ray entries and entries of similar resolution. The OWAB column contains the minimum, median, 95th percentile and maximum values of the occupancy-weighted average B-factor per residue. The column labelled ‘Q< 0.9’ lists the number of (and percentage) of residues with an average occupancy less than 0.9.

Mol	Chain	Analysed	<RSRZ>	#RSRZ>2	OWAB(Å ²)	Q<0.9
1	A	743/811 (91%)	-0.09	21 (2%) 53 43	34, 67, 109, 167	0
1	B	734/811 (90%)	0.02	20 (2%) 54 44	41, 69, 108, 155	0
All	All	1477/1622 (91%)	-0.04	41 (2%) 53 43	34, 68, 109, 167	0

All (41) RSRZ outliers are listed below:

Mol	Chain	Res	Type	RSRZ
1	B	46	ILE	5.3
1	A	780	ILE	4.0
1	B	785	ARG	3.9
1	B	185	LYS	3.8
1	B	41	GLN	3.7
1	A	783	PHE	3.7
1	A	751	ILE	3.5
1	B	795	ILE	3.5
1	A	769	LEU	3.4
1	A	801	VAL	3.3
1	A	183	PHE	3.2
1	B	182	TYR	3.2
1	B	47	ALA	3.2
1	A	113	GLY	3.1
1	A	601	ASP	2.8
1	A	182	TYR	2.7
1	B	791	LEU	2.7
1	A	791	LEU	2.7
1	B	802	ILE	2.6
1	A	792	ASN	2.6
1	B	64	TYR	2.5
1	B	786	TRP	2.5
1	B	788	ASP	2.5
1	B	74	PHE	2.5

Continued on next page...

Continued from previous page...

Mol	Chain	Res	Type	RSRZ
1	A	735	VAL	2.5
1	A	814	ILE	2.4
1	B	731	PHE	2.4
1	B	85	GLY	2.4
1	B	789	GLU	2.4
1	A	794	LYS	2.4
1	B	63	LYS	2.3
1	A	785	ARG	2.3
1	A	98	PRO	2.2
1	A	767	LEU	2.2
1	B	774	PHE	2.2
1	A	817	LEU	2.2
1	B	40	LYS	2.1
1	B	817	LEU	2.1
1	A	793	VAL	2.1
1	A	815	VAL	2.1
1	A	789	GLU	2.1

6.2 Non-standard residues in protein, DNA, RNA chains [i](#)

In the following table, the Atoms column lists the number of modelled atoms in the group and the number defined in the chemical component dictionary. The B-factors column lists the minimum, median, 95th percentile and maximum values of B factors of atoms in the group. The column labelled 'Q< 0.9' lists the number of atoms with occupancy less than 0.9.

Mol	Type	Chain	Res	Atoms	RSCC	RSR	B-factors(Å ²)	Q<0.9
5	MAN	F	4	11/12	0.69	0.21	89,105,117,125	0
6	MAN	H	4	11/12	0.81	0.18	87,95,100,105	0
4	MAN	E	4	11/12	0.83	0.17	94,101,109,112	0
3	NAG	D	2	14/15	0.90	0.16	57,73,86,93	0
4	MAN	E	5	11/12	0.91	0.11	91,96,101,102	0
3	NAG	G	2	14/15	0.92	0.14	52,81,97,100	0
8	NAG	B	911	14/15	0.93	0.25	72,89,93,93	0
8	NAG	A	905	14/15	0.94	0.14	63,69,73,73	0
8	NAG	A	913	14/15	0.94	0.18	64,69,76,78	0
6	NAG	H	2	14/15	0.96	0.15	46,51,55,56	0
5	NAG	F	2	14/15	0.96	0.14	52,55,64,76	0
6	NAG	H	1	14/15	0.97	0.15	40,47,55,63	0
4	NAG	E	1	14/15	0.97	0.16	38,42,47,49	0
2	NAG	C	2	14/15	0.97	0.14	38,45,53,60	0
5	NAG	F	1	14/15	0.97	0.16	37,52,61,64	0
2	NAG	C	1	14/15	0.98	0.15	42,46,53,58	0

Continued on next page...

Continued from previous page...

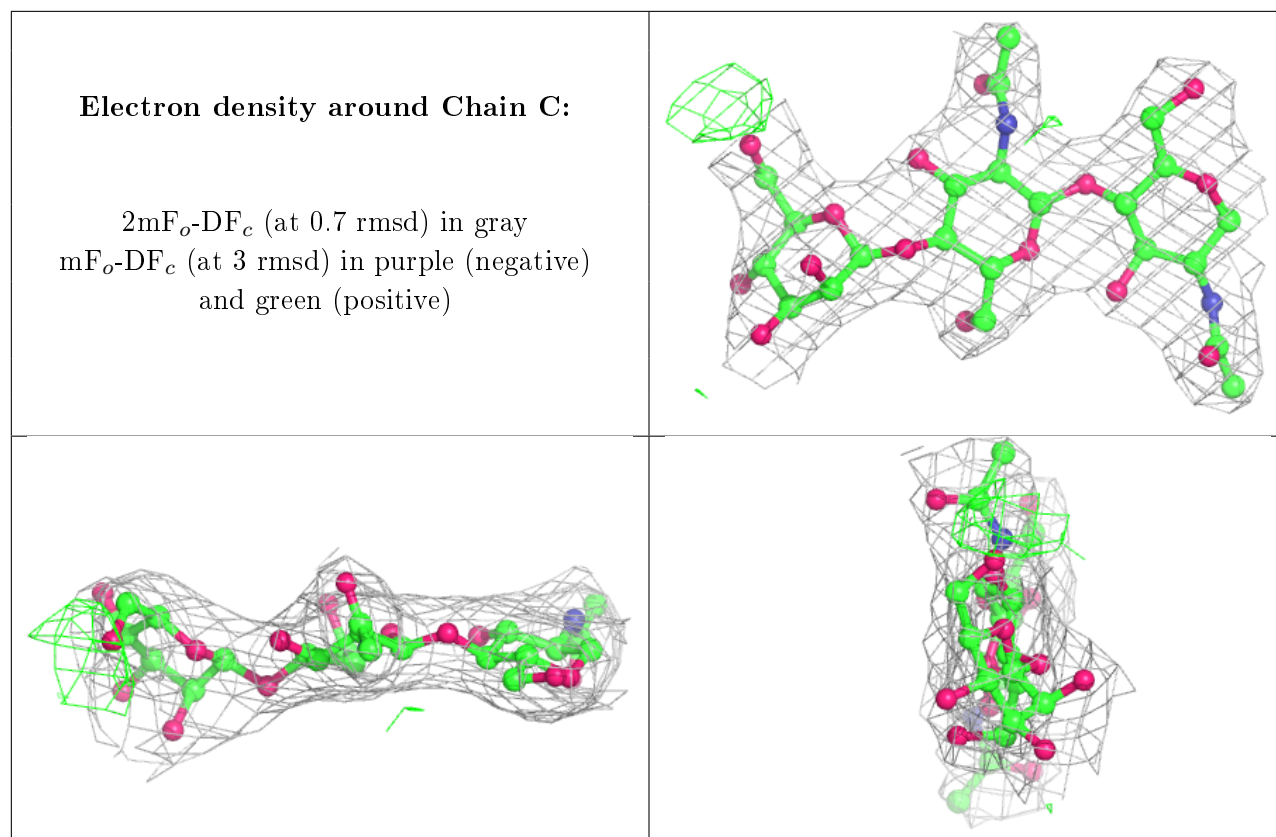
Mol	Type	Chain	Res	Atoms	RSCC	RSR	B-factors(Å ²)	Q<0.9
3	NAG	D	1	14/15	0.98	0.15	36,43,50,52	0
3	NAG	G	1	14/15	0.98	0.15	45,49,53,60	0
4	NAG	E	2	14/15	0.98	0.15	40,46,56,59	0

6.3 Carbohydrates

In the following table, the Atoms column lists the number of modelled atoms in the group and the number defined in the chemical component dictionary. The B-factors column lists the minimum, median, 95th percentile and maximum values of B factors of atoms in the group. The column labelled 'Q< 0.9' lists the number of atoms with occupancy less than 0.9.

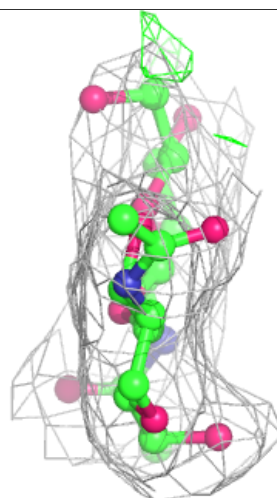
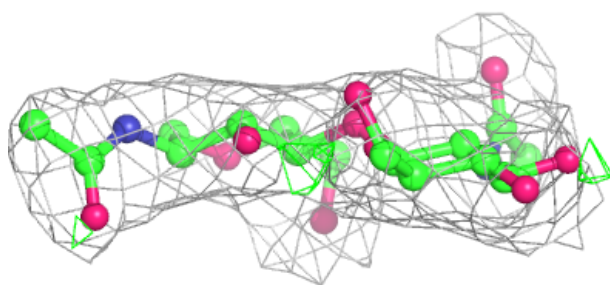
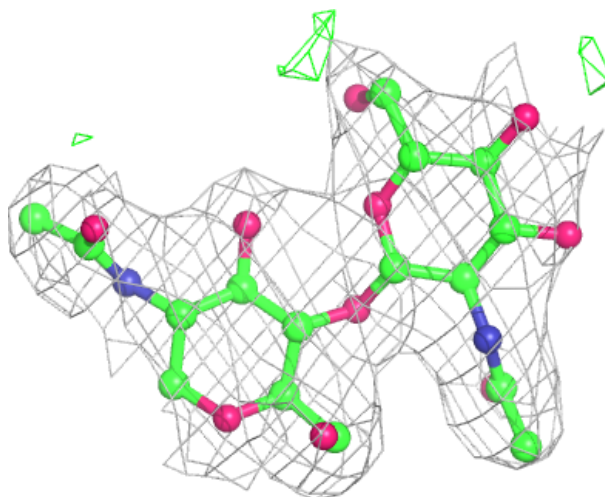
Mol	Type	Chain	Res	Atoms	RSCC	RSR	B-factors(Å ²)	Q<0.9
5	MAN	F	4	11/12	0.69	0.21	89,105,117,125	0
6	MAN	H	4	11/12	0.81	0.18	87,95,100,105	0
2	BMA	C	3	11/12	0.82	0.16	58,65,73,86	0
4	MAN	E	4	11/12	0.83	0.17	94,101,109,112	0
5	MAN	F	3	11/12	0.85	0.18	84,89,102,113	0
3	NAG	D	2	14/15	0.90	0.16	57,73,86,93	0
4	MAN	E	5	11/12	0.91	0.11	91,96,101,102	0
3	NAG	G	2	14/15	0.92	0.14	52,81,97,100	0
6	BMA	H	3	11/12	0.92	0.14	57,63,83,99	0
4	BMA	E	3	11/12	0.95	0.08	64,74,84,85	0
5	NAG	F	2	14/15	0.96	0.14	52,55,64,76	0
6	NAG	H	2	14/15	0.96	0.15	46,51,55,56	0
5	NAG	F	1	14/15	0.97	0.16	37,52,61,64	0
4	NAG	E	1	14/15	0.97	0.16	38,42,47,49	0
2	NAG	C	2	14/15	0.97	0.14	38,45,53,60	0
6	NAG	H	1	14/15	0.97	0.15	40,47,55,63	0
2	NAG	C	1	14/15	0.98	0.15	42,46,53,58	0
4	NAG	E	2	14/15	0.98	0.15	40,46,56,59	0
3	NAG	G	1	14/15	0.98	0.15	45,49,53,60	0
3	NAG	D	1	14/15	0.98	0.15	36,43,50,52	0

The following is a graphical depiction of the model fit to experimental electron density for oligosaccharide. Each fit is shown from different orientation to approximate a three-dimensional view.



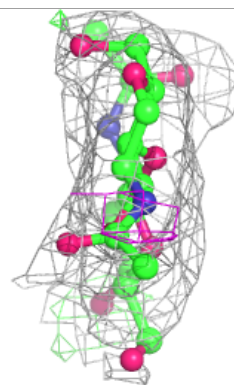
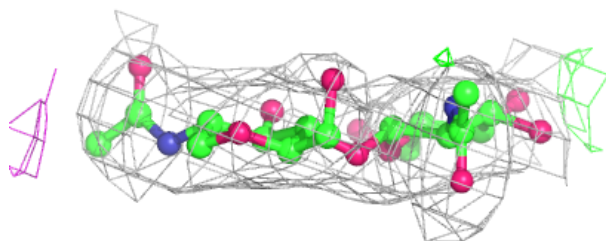
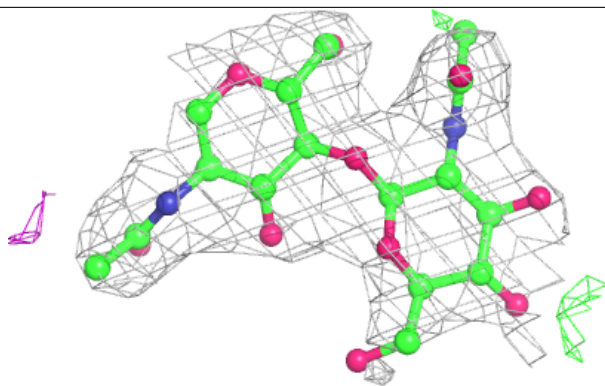
Electron density around Chain D:

$2mF_o-DF_c$ (at 0.7 rmsd) in gray
 mF_o-DF_c (at 3 rmsd) in purple (negative)
and green (positive)

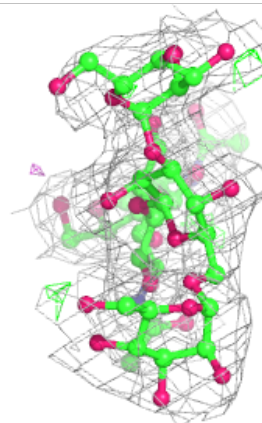
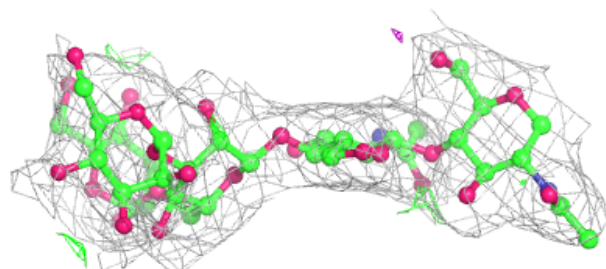
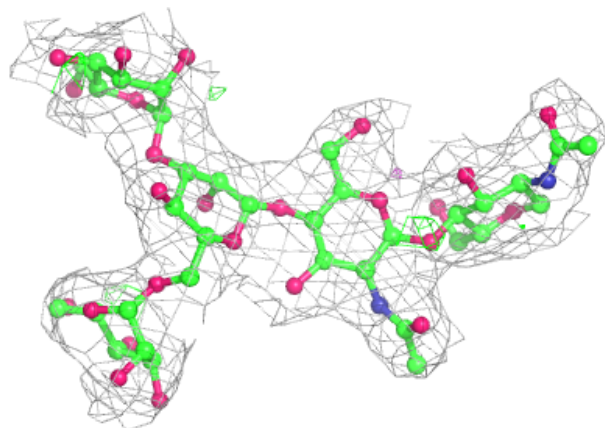


Electron density around Chain G:

$2mF_o-DF_c$ (at 0.7 rmsd) in gray
 mF_o-DF_c (at 3 rmsd) in purple (negative)
and green (positive)

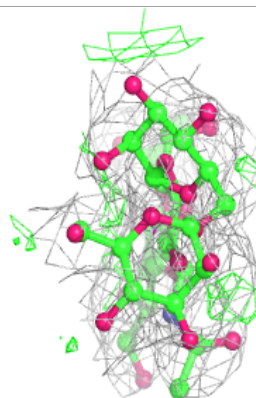
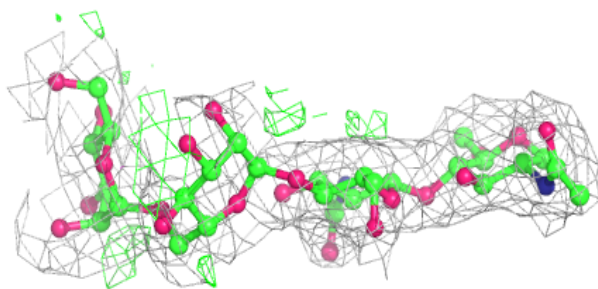
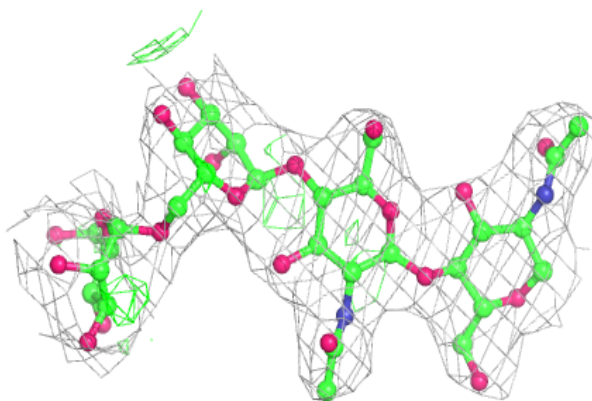
**Electron density around Chain E:**

$2mF_o-DF_c$ (at 0.7 rmsd) in gray
 mF_o-DF_c (at 3 rmsd) in purple (negative)
and green (positive)

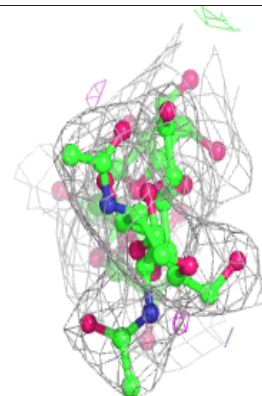
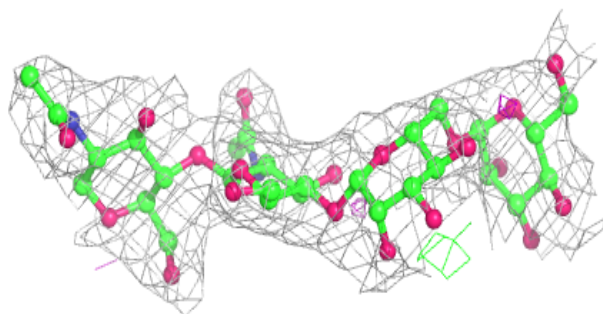
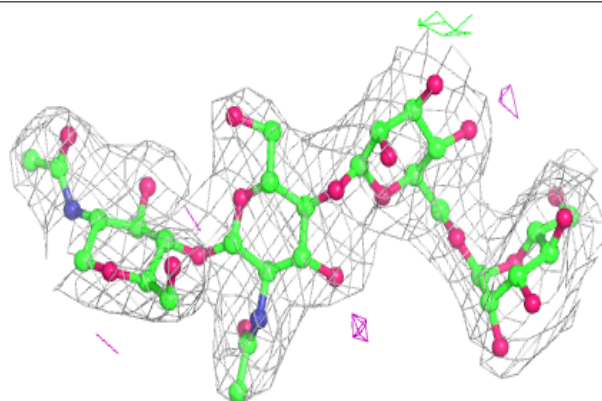


Electron density around Chain F:

$2mF_o-DF_c$ (at 0.7 rmsd) in gray
 mF_o-DF_c (at 3 rmsd) in purple (negative)
and green (positive)

**Electron density around Chain H:**

$2mF_o-DF_c$ (at 0.7 rmsd) in gray
 mF_o-DF_c (at 3 rmsd) in purple (negative)
and green (positive)

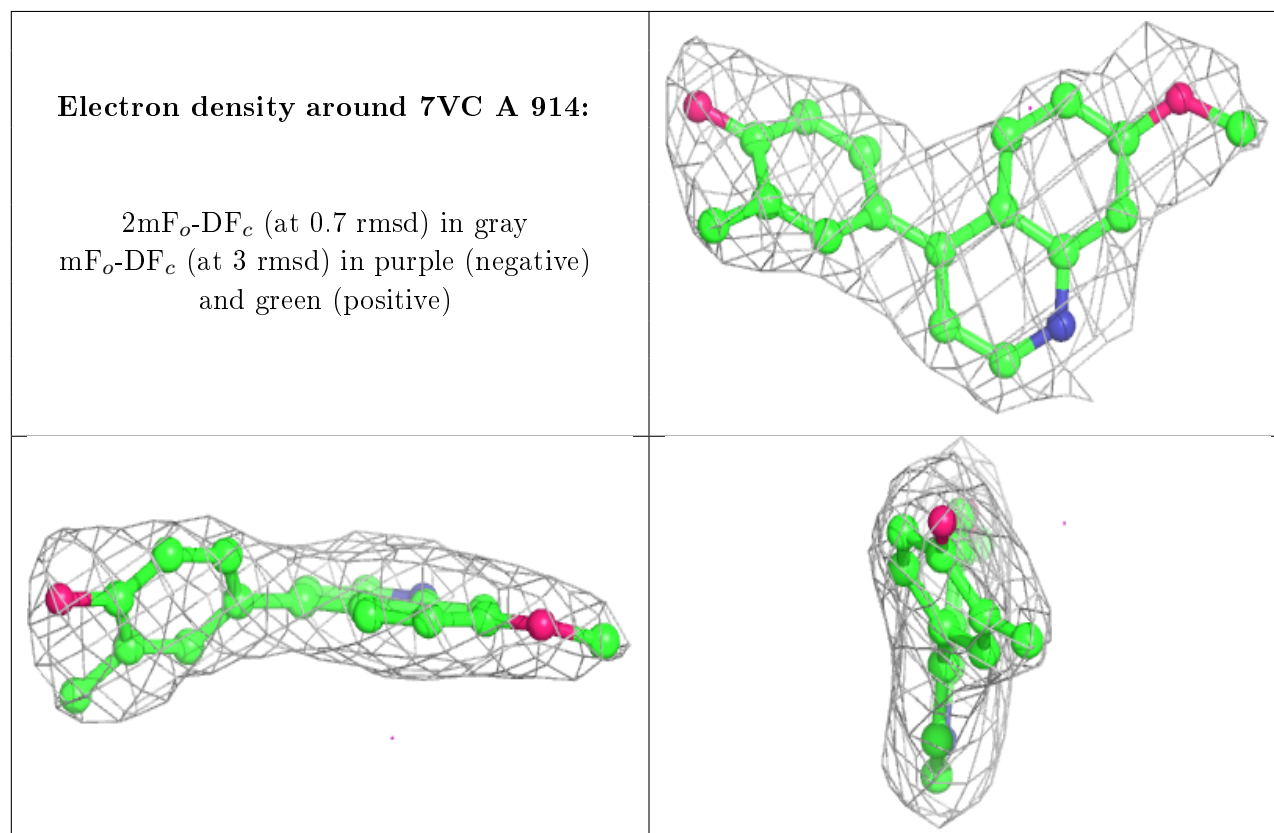


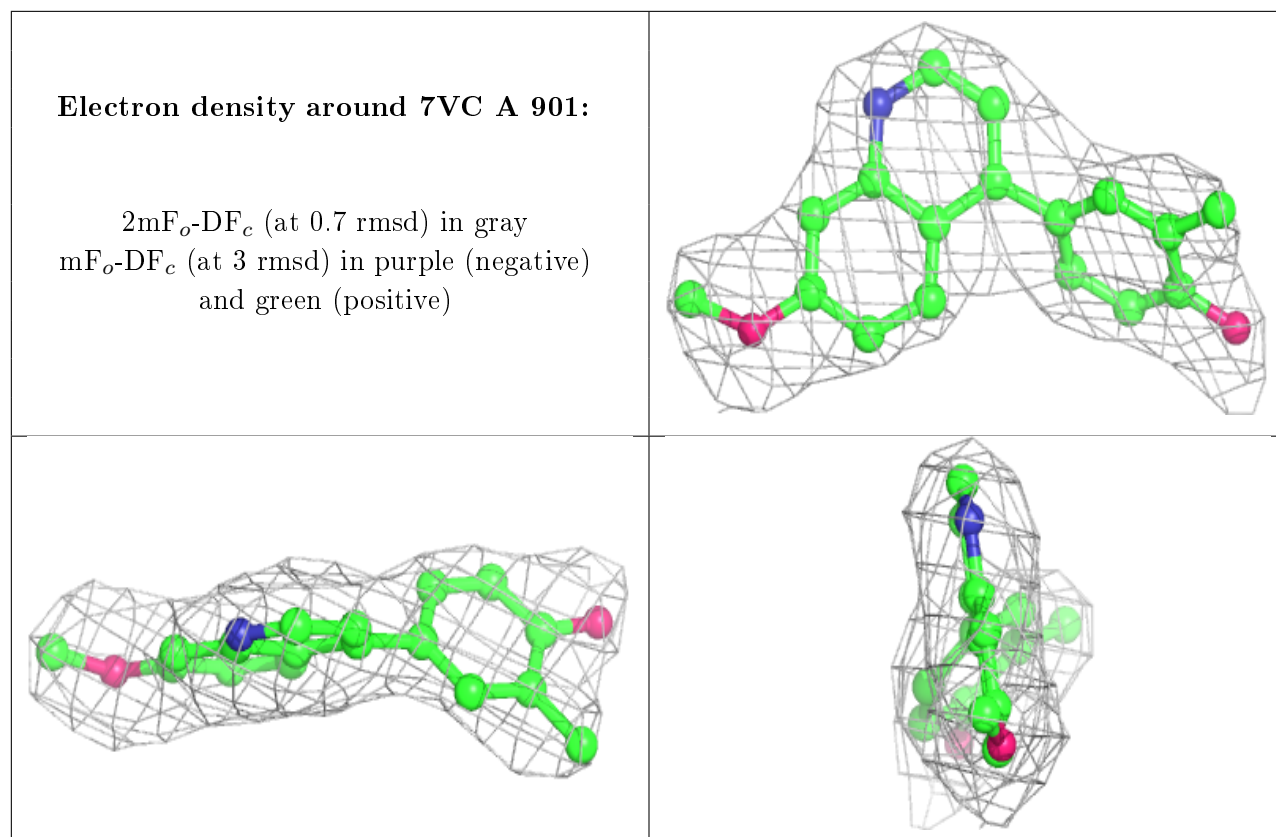
6.4 Ligands [\(i\)](#)

In the following table, the Atoms column lists the number of modelled atoms in the group and the number defined in the chemical component dictionary. The B-factors column lists the minimum, median, 95th percentile and maximum values of B factors of atoms in the group. The column labelled 'Q<0.9' lists the number of atoms with occupancy less than 0.9.

Mol	Type	Chain	Res	Atoms	RSCC	RSR	B-factors(Å ²)	Q<0.9
8	NAG	B	911	14/15	0.93	0.25	72,89,93,93	0
8	NAG	A	913	14/15	0.94	0.18	64,69,76,78	0
8	NAG	A	905	14/15	0.94	0.14	63,69,73,73	0
7	7VC	A	914	20/20	0.97	0.21	48,50,56,58	0
7	7VC	A	901	20/20	0.98	0.20	46,51,58,58	0

The following is a graphical depiction of the model fit to experimental electron density of all instances of the Ligand of Interest. In addition, ligands with molecular weight > 250 and outliers as shown on the geometry validation Tables will also be included. Each fit is shown from different orientation to approximate a three-dimensional view.





6.5 Other polymers [i](#)

There are no such residues in this entry.