



wwPDB X-ray Structure Validation Summary Report ⓘ

Nov 13, 2023 – 12:57 PM JST

PDB ID : 5X9Z
Title : Crystal structure of inositol 1,4,5-trisphosphate receptor large cytosolic domain
Authors : Hamada, K.; Miyatake, H.; Terauchi, A.; Mikoshiba, K.
Deposited on : 2017-03-10
Resolution : 7.31 Å(reported)

This is a wwPDB X-ray Structure Validation Summary Report for a publicly released PDB entry.

We welcome your comments at validation@mail.wwpdb.org

A user guide is available at

<https://www.wwpdb.org/validation/2017/XrayValidationReportHelp>

with specific help available everywhere you see the ⓘ symbol.

The types of validation reports are described at

<http://www.wwpdb.org/validation/2017/FAQs#types>.

The following versions of software and data (see [references ⓘ](#)) were used in the production of this report:

MolProbity : 4.02b-467
Xtriage (Phenix) : 1.13
EDS : 2.36
Percentile statistics : 20191225.v01 (using entries in the PDB archive December 25th 2019)
Refmac : 5.8.0158
CCP4 : 7.0.044 (Gargrove)
Ideal geometry (proteins) : Engh & Huber (2001)
Ideal geometry (DNA, RNA) : Parkinson et al. (1996)
Validation Pipeline (wwPDB-VP) : 2.36

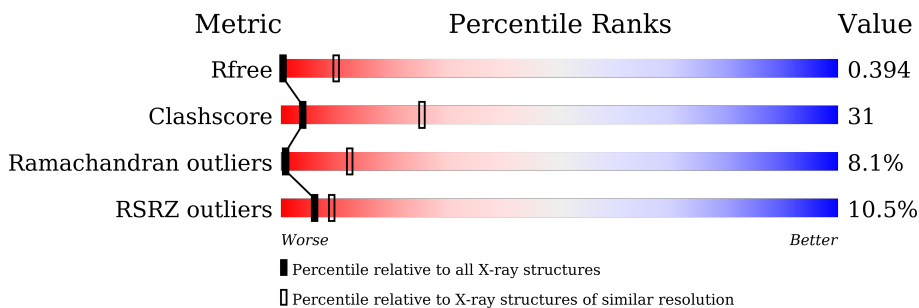
1 Overall quality at a glance

The following experimental techniques were used to determine the structure:

X-RAY DIFFRACTION

The reported resolution of this entry is 7.31 Å.

Percentile scores (ranging between 0-100) for global validation metrics of the entry are shown in the following graphic. The table shows the number of entries on which the scores are based.



Metric	Whole archive (#Entries)	Similar resolution (#Entries, resolution range(Å))
R_{free}	130704	1004 (10.00-3.90)
Clashscore	141614	1069 (10.00-3.90)
Ramachandran outliers	138981	1002 (10.00-3.90)
RSRZ outliers	127900	1004 (9.50-3.80)

The table below summarises the geometric issues observed across the polymeric chains and their fit to the electron density. The red, orange, yellow and green segments of the lower bar indicate the fraction of residues that contain outliers for ≥ 3 , 2, 1 and 0 types of geometric quality criteria respectively. A grey segment represents the fraction of residues that are not modelled. The numeric value for each fraction is indicated below the corresponding segment, with a dot representing fractions $\leq 5\%$. The upper red bar (where present) indicates the fraction of residues that have poor fit to the electron density. The numeric value is given above the bar.

Mol	Chain	Length	Quality of chain
1	A	2217	 8% 50% 24% • 23%
1	B	2217	 8% 52% 22% • 23%

2 Entry composition

There is only 1 type of molecule in this entry. The entry contains 16948 atoms, of which 0 are hydrogens and 0 are deuteriums.

In the tables below, the ZeroOcc column contains the number of atoms modelled with zero occupancy, the AltConf column contains the number of residues with at least one atom in alternate conformation and the Trace column contains the number of residues modelled with at most 2 atoms.

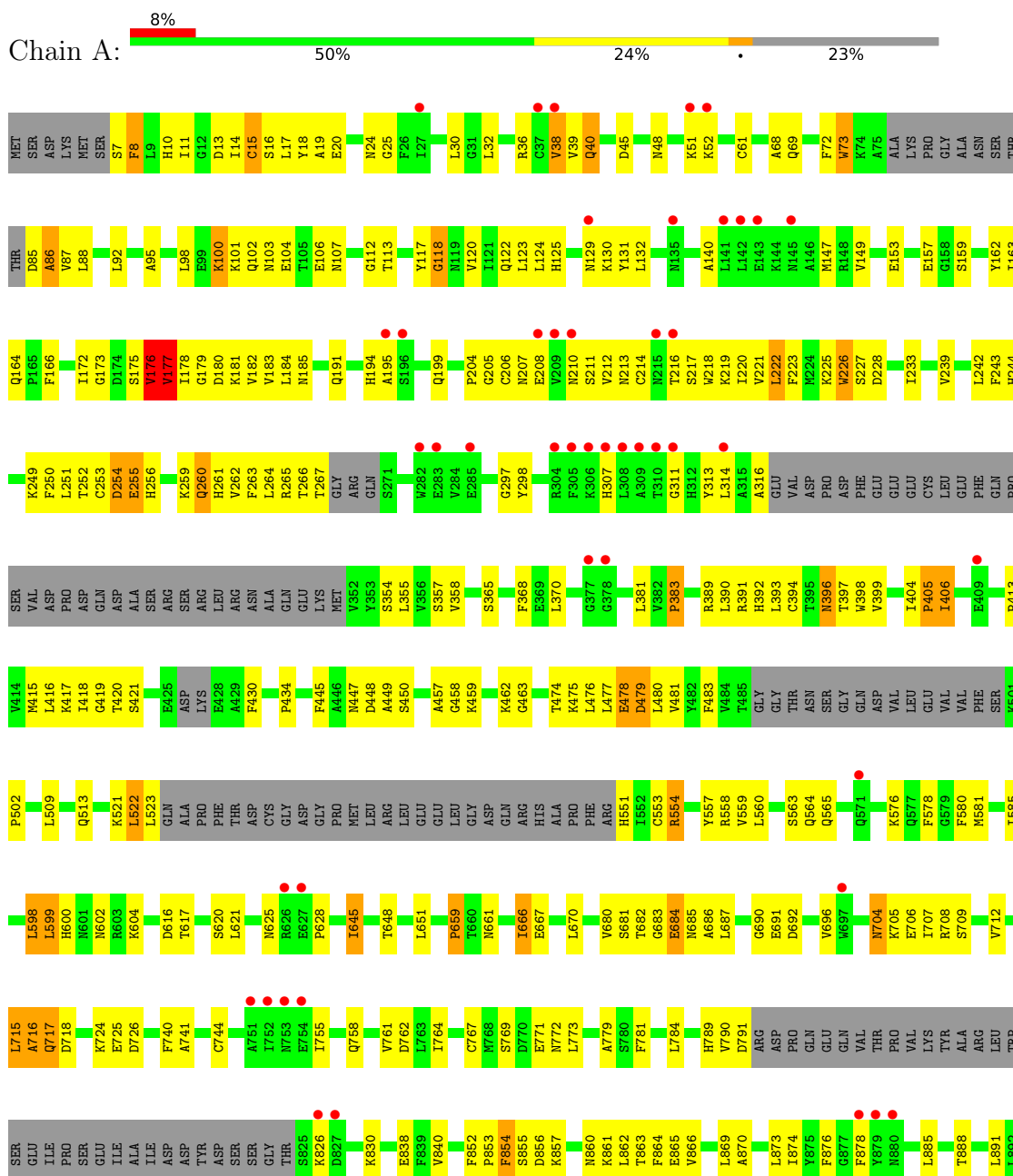
- Molecule 1 is a protein called Inositol 1,4,5-trisphosphate receptor type 1.

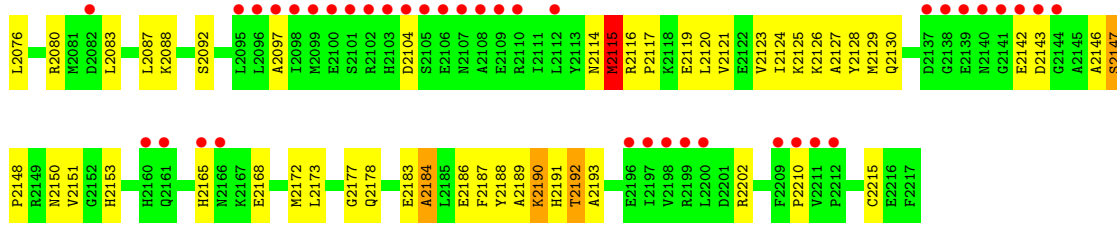
Mol	Chain	Residues	Atoms				ZeroOcc	AltConf	Trace
			Total	C	N	O			
1	A	1710	8479	5059	1710	1710	0	0	0
1	B	1708	8469	5053	1708	1708	0	0	0

3 Residue-property plots [i](#)

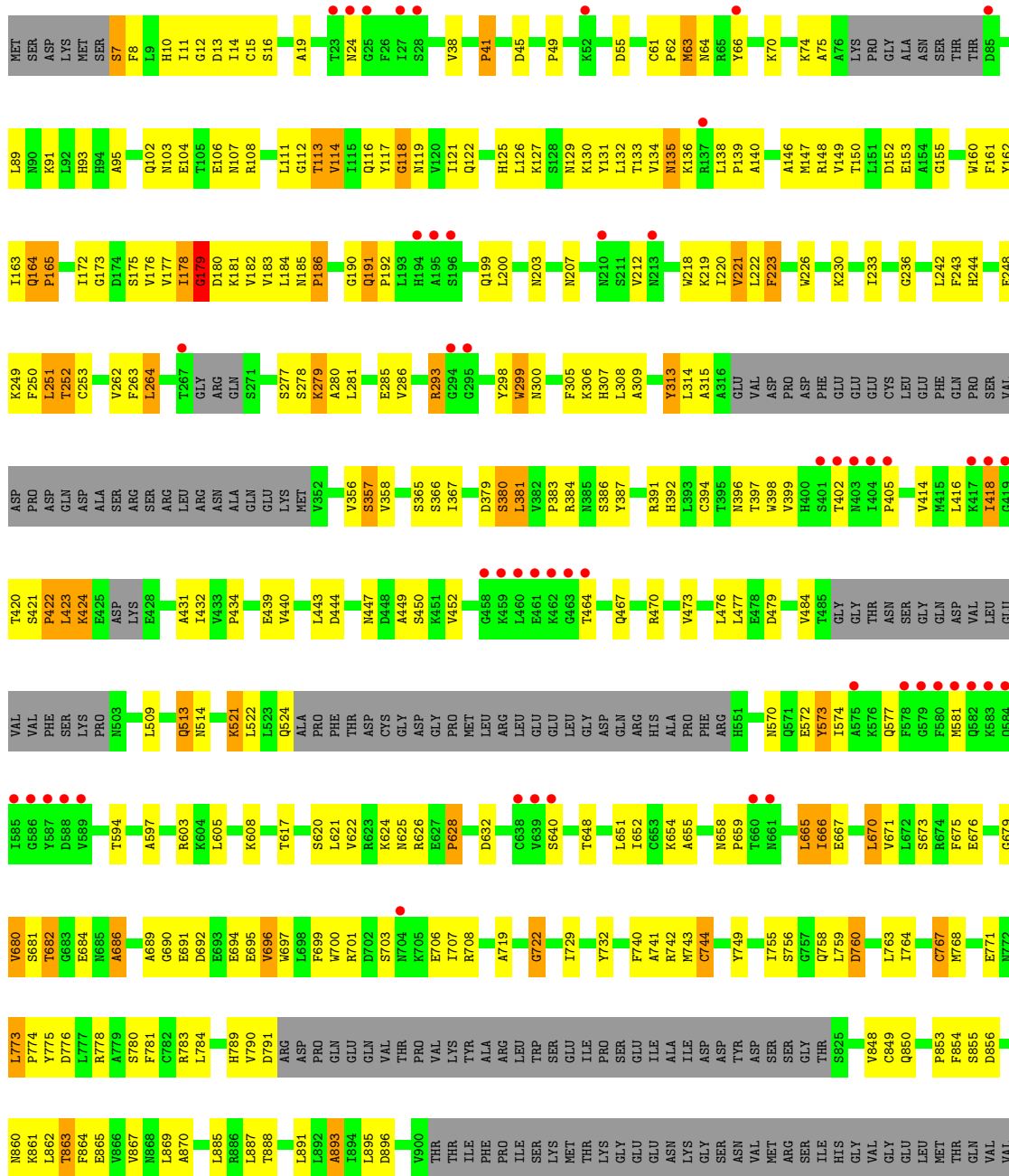
These plots are drawn for all protein, RNA, DNA and oligosaccharide chains in the entry. The first graphic for a chain summarises the proportions of the various outlier classes displayed in the second graphic. The second graphic shows the sequence view annotated by issues in geometry and electron density. Residues are color-coded according to the number of geometric quality criteria for which they contain at least one outlier: green = 0, yellow = 1, orange = 2 and red = 3 or more. A red dot above a residue indicates a poor fit to the electron density ($RSRZ > 2$). Stretches of 2 or more consecutive residues without any outlier are shown as a green connector. Residues present in the sample, but not in the model, are shown in grey.

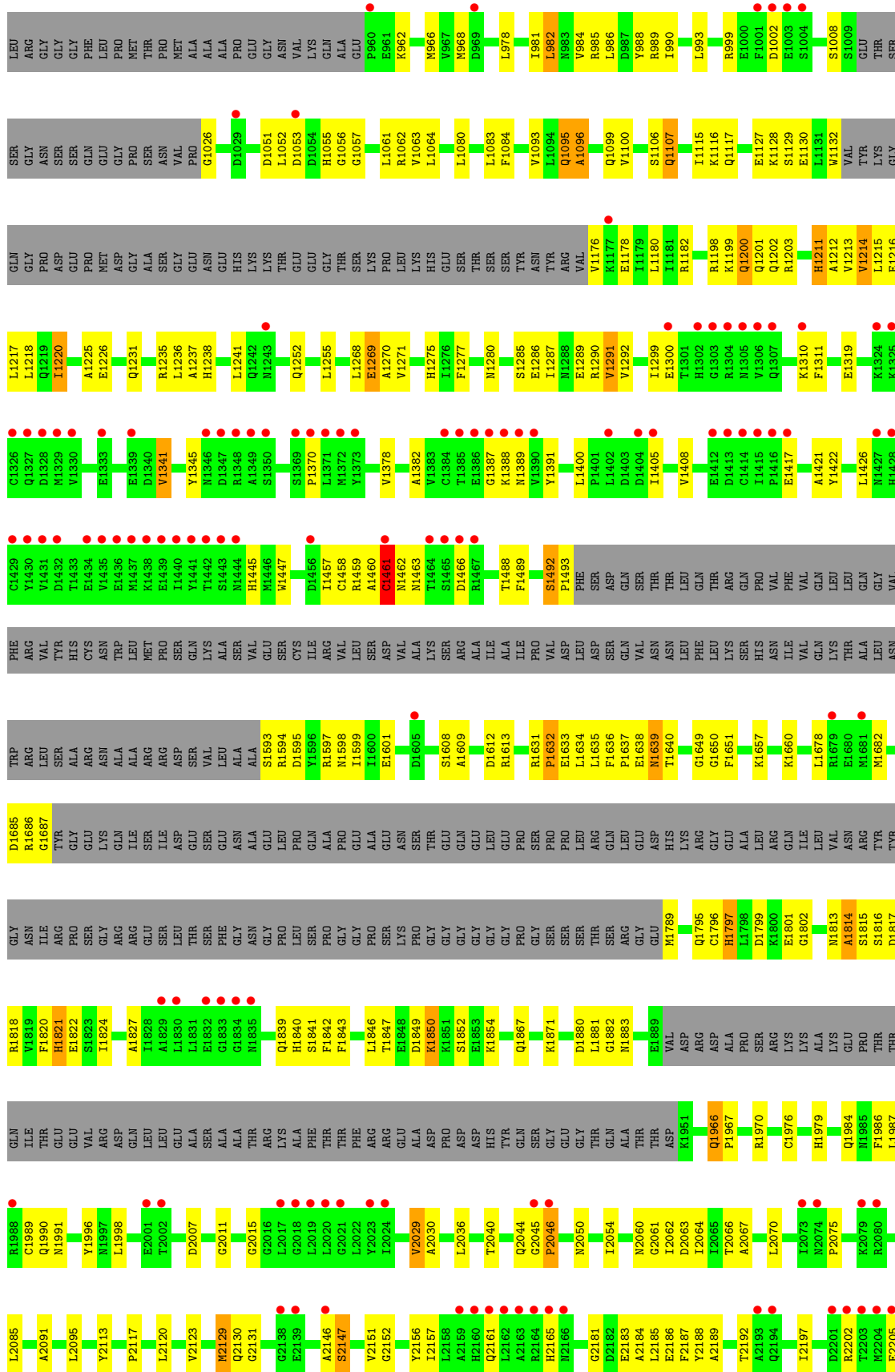
- Molecule 1: Inositol 1,4,5-trisphosphate receptor type 1





● Molecule 1: Inositol 1,4,5-trisphosphate receptor type 1





Q2206	•
L2207	•
V2208	
F2209	
P2210	
V2211	
P2212	
C2215	•
E2216	•
F2217	•

4 Data and refinement statistics i

Property	Value	Source
Space group	C 2 2 21	Depositor
Cell constants a, b, c, α , β , γ	212.50Å 221.73Å 318.45Å 90.00° 90.00° 90.00°	Depositor
Resolution (Å)	49.15 – 7.31 49.15 – 7.31	Depositor EDS
% Data completeness (in resolution range)	99.9 (49.15-7.31) 88.5 (49.15-7.31)	Depositor EDS
R_{merge}	0.20	Depositor
R_{sym}	(Not available)	Depositor
$\langle I/\sigma(I) \rangle$ ¹	1.77 (at 7.37Å)	Xtrriage
Refinement program	PHENIX (1.10.1_2155: ???)	Depositor
R, R_{free}	0.317 , 0.394 0.316 , 0.394	Depositor DCC
R_{free} test set	536 reflections (5.02%)	wwPDB-VP
Wilson B-factor (Å ²)	209.8	Xtrriage
Anisotropy	0.044	Xtrriage
Bulk solvent k_{sol} (e/Å ³), B_{sol} (Å ²)	0.29 , 335.1	EDS
L-test for twinning ²	$\langle L \rangle = 0.25$, $\langle L^2 \rangle = 0.10$	Xtrriage
Estimated twinning fraction	0.219 for -k,-h,-l	Xtrriage
F_o, F_c correlation	0.64	EDS
Total number of atoms	16948	wwPDB-VP
Average B, all atoms (Å ²)	170.0	wwPDB-VP

Xtrriage's analysis on translational NCS is as follows: *The largest off-origin peak in the Patterson function is 4.05% of the height of the origin peak. No significant pseudotranslation is detected.*

¹Intensities estimated from amplitudes.

²Theoretical values of $\langle |L| \rangle$, $\langle L^2 \rangle$ for acentric reflections are 0.5, 0.333 respectively for untwinned datasets, and 0.375, 0.2 for perfectly twinned datasets.

5 Model quality [i](#)

5.1 Standard geometry [i](#)

The Z score for a bond length (or angle) is the number of standard deviations the observed value is removed from the expected value. A bond length (or angle) with $|Z| > 5$ is considered an outlier worth inspection. RMSZ is the root-mean-square of all Z scores of the bond lengths (or angles).

Mol	Chain	Bond lengths		Bond angles	
		RMSZ	# Z >5	RMSZ	# Z >5
1	A	0.48	1/8465 (0.0%)	0.72	6/11786 (0.1%)
1	B	0.49	1/8455 (0.0%)	0.72	1/11772 (0.0%)
All	All	0.48	2/16920 (0.0%)	0.72	7/23558 (0.0%)

Chiral center outliers are detected by calculating the chiral volume of a chiral center and verifying if the center is modelled as a planar moiety or with the opposite hand. A planarity outlier is detected by checking planarity of atoms in a peptide group, atoms in a mainchain group or atoms of a sidechain that are expected to be planar.

Mol	Chain	#Chirality outliers	#Planarity outliers
1	A	0	25
1	B	0	22
All	All	0	47

All (2) bond length outliers are listed below:

Mol	Chain	Res	Type	Atoms	Z	Observed(Å)	Ideal(Å)
1	B	178	ILE	C-O	7.16	1.36	1.23
1	A	1048	THR	C-N	5.11	1.44	1.34

The worst 5 of 7 bond angle outliers are listed below:

Mol	Chain	Res	Type	Atoms	Z	Observed(°)	Ideal(°)
1	A	999	ARG	N-CA-C	-7.07	91.92	111.00
1	A	177	VAL	N-CA-C	6.68	129.03	111.00
1	B	743	MET	C-N-CA	5.66	135.84	121.70
1	A	176	VAL	C-N-CA	5.44	135.31	121.70
1	A	554	ARG	CA-C-O	-5.28	109.02	120.10

There are no chirality outliers.

5 of 47 planarity outliers are listed below:

Mol	Chain	Res	Type	Group
1	A	118	GLY	Peptide
1	A	15	CYS	Peptide
1	A	176	VAL	Peptide
1	A	73	TRP	Peptide
1	A	8	PHE	Peptide

5.2 Too-close contacts [i](#)

In the following table, the Non-H and H(model) columns list the number of non-hydrogen atoms and hydrogen atoms in the chain respectively. The H(added) column lists the number of hydrogen atoms added and optimized by MolProbity. The Clashes column lists the number of clashes within the asymmetric unit, whereas Symm-Clashes lists symmetry-related clashes.

Mol	Chain	Non-H	H(model)	H(added)	Clashes	Symm-Clashes
1	A	8479	0	3697	386	0
1	B	8469	0	3697	360	0
All	All	16948	0	7394	745	0

The all-atom clashscore is defined as the number of clashes found per 1000 atoms (including hydrogen atoms). The all-atom clashscore for this structure is 31.

The worst 5 of 745 close contacts within the same asymmetric unit are listed below, sorted by their clash magnitude.

Atom-1	Atom-2	Interatomic distance (Å)	Clash overlap (Å)
1:A:1208:MET:O	1:A:1212:ALA:HB3	1.49	1.10
1:A:405:PRO:HA	1:A:416:LEU:HA	1.39	1.04
1:A:162:TYR:O	1:A:184:LEU:C	1.97	1.02
1:B:1682:MET:O	1:B:1686:ARG:N	1.93	1.01
1:A:1472:SER:O	1:A:1476:LYS:CB	2.10	1.00

There are no symmetry-related clashes.

5.3 Torsion angles [i](#)

5.3.1 Protein backbone [i](#)

In the following table, the Percentiles column shows the percent Ramachandran outliers of the chain as a percentile score with respect to all X-ray entries followed by that with respect to entries of similar resolution.

The Analysed column shows the number of residues for which the backbone conformation was

analysed, and the total number of residues.

Mol	Chain	Analysed	Favoured	Allowed	Outliers	Percentiles	
1	A	1682/2217 (76%)	1265 (75%)	296 (18%)	121 (7%)	1	14
1	B	1680/2217 (76%)	1193 (71%)	337 (20%)	150 (9%)	1	11
All	All	3362/4434 (76%)	2458 (73%)	633 (19%)	271 (8%)	1	12

5 of 271 Ramachandran outliers are listed below:

Mol	Chain	Res	Type
1	A	86	ALA
1	A	87	VAL
1	A	213	ASN
1	A	222	LEU
1	A	226	TRP

5.3.2 Protein sidechains [i](#)

There are no protein residues with a non-rotameric sidechain to report in this entry.

5.3.3 RNA [i](#)

There are no RNA molecules in this entry.

5.4 Non-standard residues in protein, DNA, RNA chains [i](#)

There are no non-standard protein/DNA/RNA residues in this entry.

5.5 Carbohydrates [i](#)

There are no monosaccharides in this entry.

5.6 Ligand geometry [i](#)

There are no ligands in this entry.

5.7 Other polymers [i](#)

There are no such residues in this entry.

5.8 Polymer linkage issues

There are no chain breaks in this entry.

6 Fit of model and data [i](#)

6.1 Protein, DNA and RNA chains [i](#)

In the following table, the column labelled ‘#RSRZ > 2’ contains the number (and percentage) of RSRZ outliers, followed by percent RSRZ outliers for the chain as percentile scores relative to all X-ray entries and entries of similar resolution. The OWAB column contains the minimum, median, 95th percentile and maximum values of the occupancy-weighted average B-factor per residue. The column labelled ‘Q < 0.9’ lists the number of (and percentage) of residues with an average occupancy less than 0.9.

Mol	Chain	Analysed	<RSRZ>	#RSRZ>2	OWAB(Å ²)	Q<0.9
1	A	1710/2217 (77%)	0.34	184 (10%) 5 9	0, 157, 428, 888	0
1	B	1708/2217 (77%)	0.29	175 (10%) 6 10	0, 136, 432, 776	0
All	All	3418/4434 (77%)	0.31	359 (10%) 6 9	0, 147, 430, 888	0

The worst 5 of 359 RSRZ outliers are listed below:

Mol	Chain	Res	Type	RSRZ
1	A	2102	ARG	18.5
1	A	2103	HIS	16.7
1	A	2101	SER	13.2
1	A	2107	ASN	13.0
1	A	1395	LYS	11.4

6.2 Non-standard residues in protein, DNA, RNA chains [i](#)

There are no non-standard protein/DNA/RNA residues in this entry.

6.3 Carbohydrates [i](#)

There are no monosaccharides in this entry.

6.4 Ligands [i](#)

There are no ligands in this entry.

6.5 Other polymers [i](#)

There are no such residues in this entry.