



Full wwPDB EM Validation Report ⓘ

Mar 2, 2024 – 07:22 PM EST

PDB ID : 5VHO
EMDB ID : EMD-8680
Title : Conformational Landscape of the p28-Bound Human Proteasome Regulatory Particle
Authors : Lu, Y.; Wu, J.; Dong, Y.; Chen, S.; Sun, S.; Ma, Y.B.; Ouyang, Q.; Finley, D.; Kirschner, M.W.; Mao, Y.
Deposited on : 2017-04-13
Resolution : 8.30 Å(reported)

This is a Full wwPDB EM Validation Report for a publicly released PDB entry.

We welcome your comments at validation@mail.wwpdb.org

A user guide is available at

<https://www.wwpdb.org/validation/2017/EMValidationReportHelp>

with specific help available everywhere you see the ⓘ symbol.

The types of validation reports are described at

<http://www.wwpdb.org/validation/2017/FAQs#types>.

The following versions of software and data (see [references ⓘ](#)) were used in the production of this report:

EMDB validation analysis : 0.0.1.dev70
MolProbity : 4.02b-467
Percentile statistics : 20191225.v01 (using entries in the PDB archive December 25th 2019)
MapQ : 1.9.13
Ideal geometry (proteins) : Engh & Huber (2001)
Ideal geometry (DNA, RNA) : Parkinson et al. (1996)
Validation Pipeline (wwPDB-VP) : 2.36

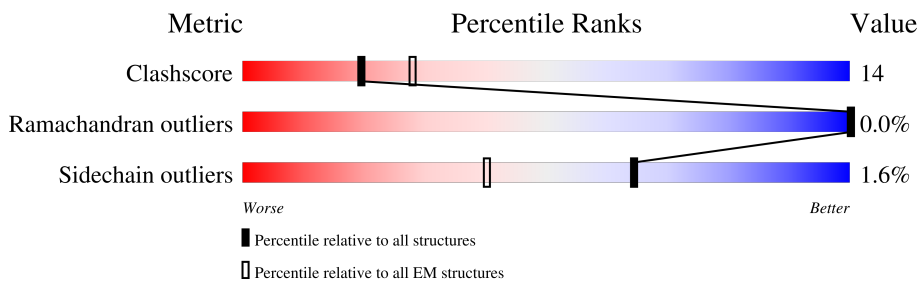
1 Overall quality at a glance i

The following experimental techniques were used to determine the structure:

ELECTRON MICROSCOPY

The reported resolution of this entry is 8.30 Å.

Percentile scores (ranging between 0-100) for global validation metrics of the entry are shown in the following graphic. The table shows the number of entries on which the scores are based.



Metric	Whole archive (#Entries)	EM structures (#Entries)
Clashscore	158937	4297
Ramachandran outliers	154571	4023
Sidechain outliers	154315	3826

The table below summarises the geometric issues observed across the polymeric chains and their fit to the map. The red, orange, yellow and green segments of the bar indicate the fraction of residues that contain outliers for ≥ 3 , 2, 1 and 0 types of geometric quality criteria respectively. A grey segment represents the fraction of residues that are not modelled. The numeric value for each fraction is indicated below the corresponding segment, with a dot representing fractions $\leq 5\%$. The upper red bar (where present) indicates the fraction of residues that have poor fit to the EM map (all-atom inclusion $< 40\%$). The numeric value is given above the bar.

Mol	Chain	Length	Quality of chain
1	G	223	
2	A	267	
3	B	267	
4	D	262	
5	E	262	
6	F	267	
7	C	266	
8	f	848	

2 Entry composition [i](#)

There are 8 unique types of molecules in this entry. The entry contains 17686 atoms, of which 0 are hydrogens and 0 are deuteriums.

In the tables below, the AltConf column contains the number of residues with at least one atom in alternate conformation and the Trace column contains the number of residues modelled with at most 2 atoms.

- Molecule 1 is a protein called 26S proteasome non-ATPase regulatory subunit 10.

Mol	Chain	Residues	Atoms					AltConf	Trace
			Total	C	N	O	S		
1	G	196	1486	922	266	289	9	0	0

- Molecule 2 is a protein called 26S proteasome regulatory subunit 7.

Mol	Chain	Residues	Atoms					AltConf	Trace
			Total	C	N	O	S		
2	A	255	2011	1266	359	371	15	0	0

- Molecule 3 is a protein called 26S proteasome regulatory subunit 4.

Mol	Chain	Residues	Atoms					AltConf	Trace
			Total	C	N	O	S		
3	B	244	1920	1211	329	372	8	0	0

- Molecule 4 is a protein called 26S proteasome regulatory subunit 6B.

Mol	Chain	Residues	Atoms					AltConf	Trace
			Total	C	N	O	S		
4	D	207	1635	1038	288	301	8	0	0

- Molecule 5 is a protein called 26S proteasome regulatory subunit 10B.

Mol	Chain	Residues	Atoms					AltConf	Trace
			Total	C	N	O	S		
5	E	209	1640	1029	293	306	12	0	0

- Molecule 6 is a protein called 26S proteasome regulatory subunit 6A.

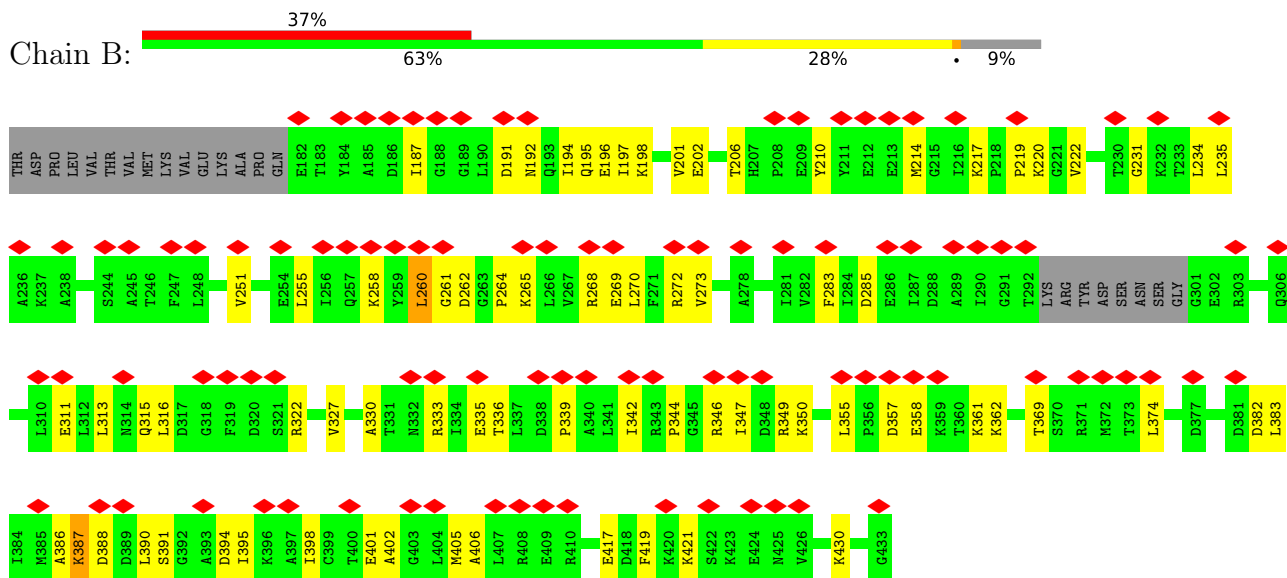
Mol	Chain	Residues	Atoms					AltConf	Trace
			Total	C	N	O	S		
6	F	238	1848	1161	327	347	13	0	0

- Molecule 7 is a protein called 26S proteasome regulatory subunit 8.

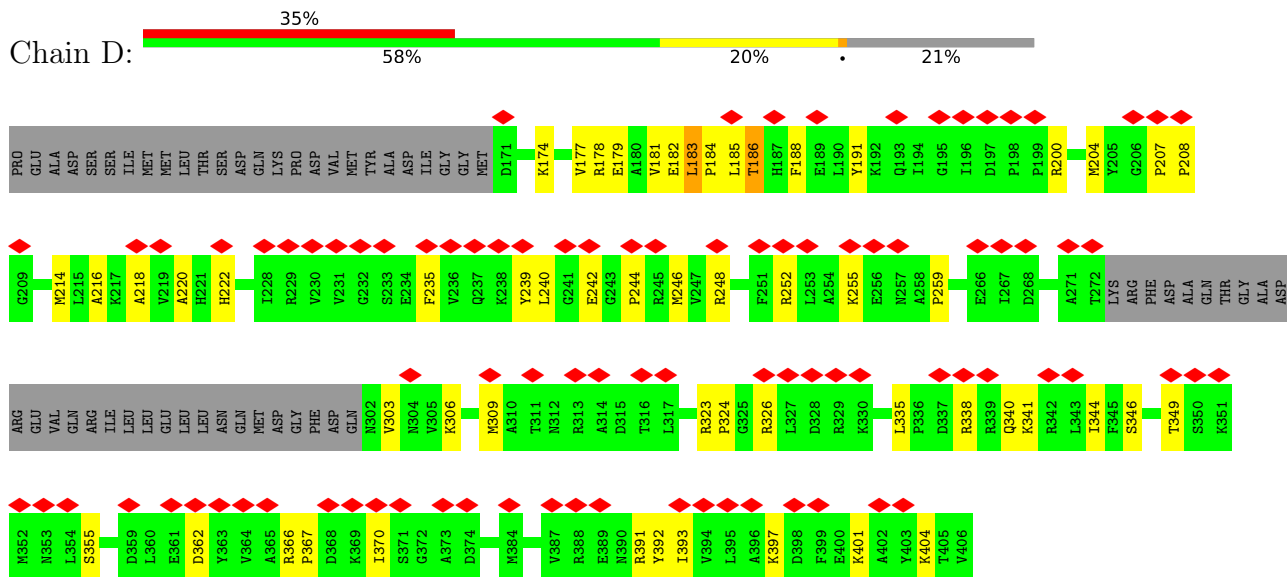
Mol	Chain	Residues	Atoms					AltConf	Trace
			Total	C	N	O	S		
7	C	237	1842	1157	330	342	13	0	0

- Molecule 8 is a protein called 26S proteasome non-ATPase regulatory subunit 2.

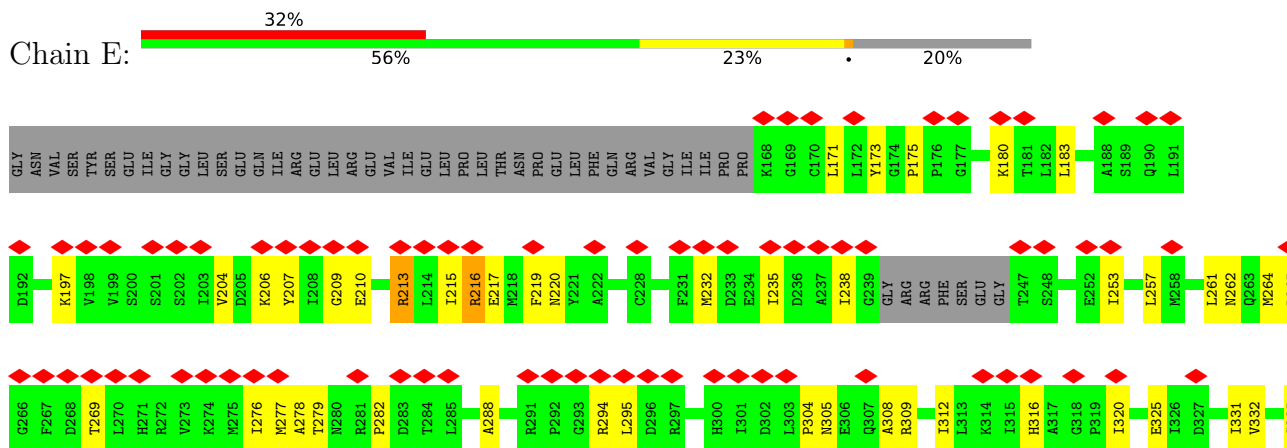
Mol	Chain	Residues	Atoms					AltConf	Trace
			Total	C	N	O	S		
8	f	686	5304	3335	901	1033	35	0	0



• Molecule 4: 26S proteasome regulatory subunit 6B

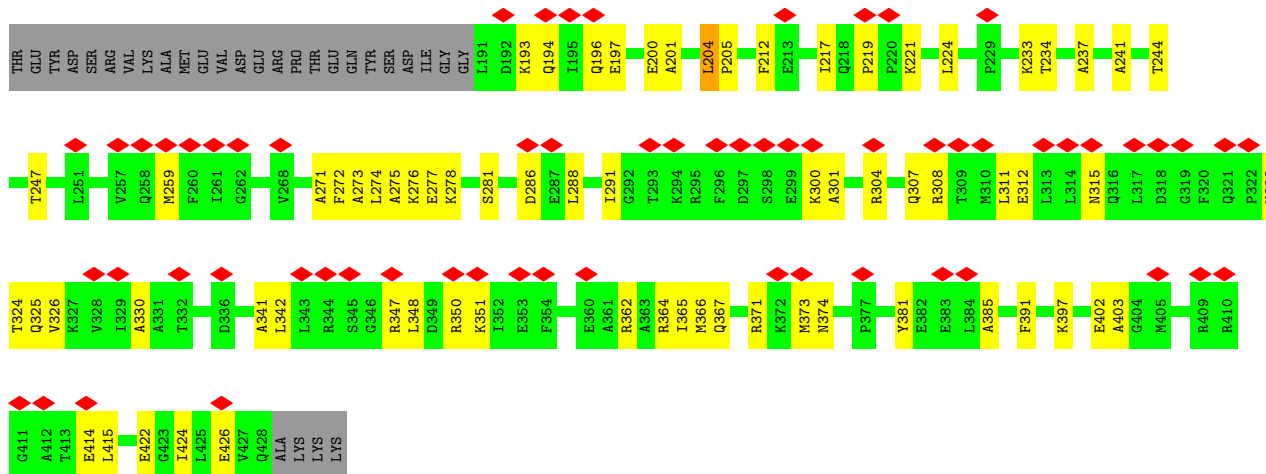


• Molecule 5: 26S proteasome regulatory subunit 10B

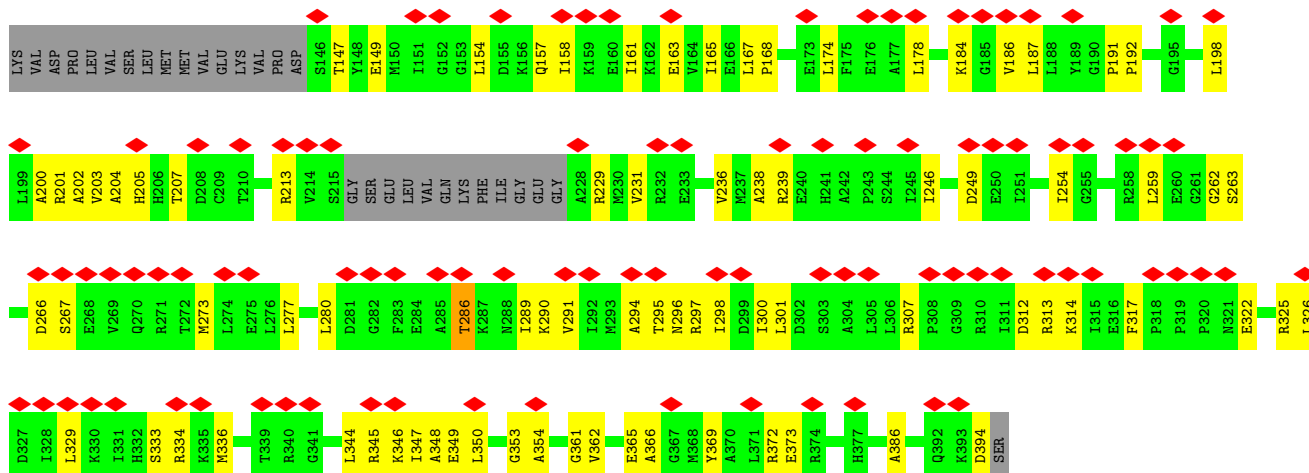




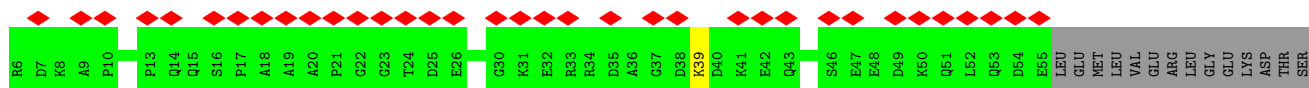
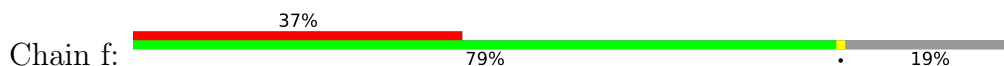
• Molecule 6: 26S proteasome regulatory subunit 6A

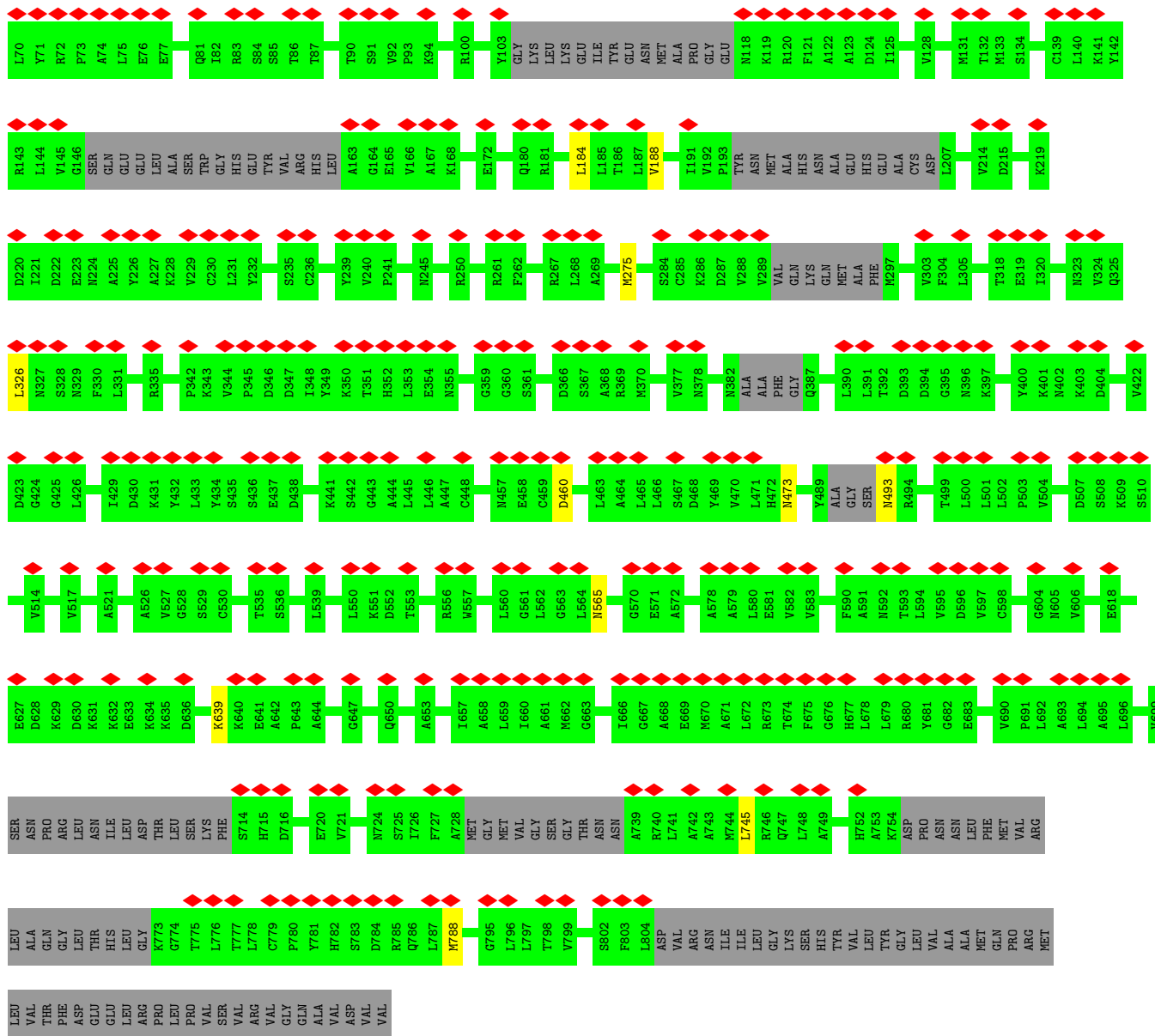


• Molecule 7: 26S proteasome regulatory subunit 8



• Molecule 8: 26S proteasome non-ATPase regulatory subunit 2





4 Experimental information

Property	Value	Source
EM reconstruction method	SINGLE PARTICLE	Depositor
Imposed symmetry	POINT, Not provided	
Number of particles used	9004	Depositor
Resolution determination method	FSC 0.143 CUT-OFF	Depositor
CTF correction method	PHASE FLIPPING AND AMPLITUDE CORRECTION	Depositor
Microscope	FEI TECNAI ARCTICA	Depositor
Voltage (kV)	200	Depositor
Electron dose ($e^-/\text{\AA}^2$)	50	Depositor
Minimum defocus (nm)	Not provided	
Maximum defocus (nm)	Not provided	
Magnification	Not provided	
Image detector	GATAN K2 SUMMIT (4k x 4k)	Depositor
Maximum map value	0.011	Depositor
Minimum map value	-0.006	Depositor
Average map value	-0.000	Depositor
Map value standard deviation	0.001	Depositor
Recommended contour level	0.004	Depositor
Map size (Å)	309.6, 309.6, 309.6	wwPDB
Map dimensions	360, 360, 360	wwPDB
Map angles (°)	90.0, 90.0, 90.0	wwPDB
Pixel spacing (Å)	0.86, 0.86, 0.86	Depositor

5 Model quality [i](#)

5.1 Standard geometry [i](#)

The Z score for a bond length (or angle) is the number of standard deviations the observed value is removed from the expected value. A bond length (or angle) with $|Z| > 5$ is considered an outlier worth inspection. RMSZ is the root-mean-square of all Z scores of the bond lengths (or angles).

Mol	Chain	Bond lengths		Bond angles	
		RMSZ	# Z >5	RMSZ	# Z >5
1	G	0.23	0/1510	0.37	0/2045
2	A	0.24	0/2042	0.42	0/2748
3	B	0.23	0/1946	0.42	0/2620
4	D	0.24	0/1662	0.43	0/2244
5	E	0.23	0/1664	0.40	0/2238
6	F	0.24	0/1874	0.40	0/2525
7	C	0.23	0/1867	0.41	0/2508
8	f	0.23	0/5377	0.42	0/7248
All	All	0.23	0/17942	0.41	0/24176

There are no bond length outliers.

There are no bond angle outliers.

There are no chirality outliers.

There are no planarity outliers.

5.2 Too-close contacts [i](#)

In the following table, the Non-H and H(model) columns list the number of non-hydrogen atoms and hydrogen atoms in the chain respectively. The H(added) column lists the number of hydrogen atoms added and optimized by MolProbity. The Clashes column lists the number of clashes within the asymmetric unit, whereas Symm-Clashes lists symmetry-related clashes.

Mol	Chain	Non-H	H(model)	H(added)	Clashes	Symm-Clashes
1	G	1486	0	1467	32	0
2	A	2011	0	2058	49	0
3	B	1920	0	1966	57	0
4	D	1635	0	1679	38	0
5	E	1640	0	1663	46	0
6	F	1848	0	1889	53	0
7	C	1842	0	1901	65	0
8	f	5304	0	5315	0	0

Continued on next page...

Continued from previous page...

Mol	Chain	Non-H	H(model)	H(added)	Clashes	Symm-Clashes
All	All	17686	0	17938	325	0

The all-atom clashscore is defined as the number of clashes found per 1000 atoms (including hydrogen atoms). The all-atom clashscore for this structure is 14.

All (325) close contacts within the same asymmetric unit are listed below, sorted by their clash magnitude.

Atom-1	Atom-2	Interatomic distance (Å)	Clash overlap (Å)
2:A:200:ARG:O	2:A:204:LEU:HB2	1.47	1.13
6:F:273:ALA:O	6:F:277:GLU:HB3	1.65	0.95
6:F:272:PHE:O	6:F:276:LYS:HB3	1.66	0.95
4:D:177:VAL:O	4:D:181:VAL:HB	1.69	0.92
5:E:216:ARG:O	5:E:220:ASN:HB2	1.71	0.89
2:A:298:THR:O	2:A:302:LEU:HB2	1.74	0.87
7:C:344:LEU:O	7:C:348:ALA:HB3	1.76	0.86
7:C:263:SER:O	7:C:267:SER:HB2	1.76	0.85
6:F:367:GLN:O	6:F:371:ARG:HB3	1.76	0.84
5:E:378:LYS:O	5:E:382:SER:HB3	1.77	0.83
5:E:370:ALA:O	5:E:374:VAL:HB	1.78	0.83
5:E:261:LEU:O	5:E:265:ASP:HB2	1.81	0.81
7:C:297:ARG:HH21	7:C:353:GLY:HA2	1.47	0.79
1:G:111:HIS:O	1:G:115:SER:HB2	1.83	0.79
6:F:274:LEU:O	6:F:278:LYS:HB2	1.82	0.79
7:C:346:LYS:O	7:C:350:LEU:HB2	1.81	0.78
5:E:371:VAL:O	5:E:375:ALA:HB3	1.83	0.78
2:A:161:VAL:O	2:A:165:GLN:HB2	1.84	0.77
5:E:180:LYS:HD2	5:E:279:THR:H	1.50	0.77
3:B:398:ILE:O	3:B:402:ALA:HB2	1.86	0.75
1:G:144:HIS:O	1:G:148:ALA:HB2	1.88	0.74
7:C:213:ARG:HH22	7:C:249:ASP:HB2	1.55	0.72
4:D:183:LEU:HD23	4:D:184:PRO:HD3	1.73	0.71
7:C:369:TYR:O	7:C:373:GLU:HB2	1.91	0.71
5:E:372:ARG:O	5:E:376:ASP:HB2	1.89	0.70
7:C:280:LEU:HD21	7:C:289:ILE:HB	1.71	0.70
1:G:57:GLU:O	1:G:61:GLN:HB2	1.91	0.70
3:B:387:LYS:HG2	3:B:388:ASP:H	1.57	0.70
2:A:417:ILE:O	2:A:421:ALA:HB2	1.92	0.70
1:G:60:LEU:HD13	1:G:95:LYS:HG3	1.75	0.69
7:C:262:GLY:O	7:C:266:ASP:CB	2.42	0.68
6:F:381:TYR:O	6:F:385:ALA:HB3	1.92	0.68
7:C:262:GLY:O	7:C:266:ASP:HB3	1.94	0.67

Continued on next page...

Continued from previous page...

Atom-1	Atom-2	Interatomic distance (Å)	Clash overlap (Å)
1:G:72:ALA:HB1	1:G:104:GLN:HB2	1.77	0.67
5:E:206:LYS:HG2	6:F:300:LYS:HA	1.77	0.67
7:C:263:SER:O	7:C:267:SER:CB	2.44	0.65
3:B:231:GLY:O	3:B:235:LEU:HB2	1.97	0.65
6:F:307:GLN:O	6:F:311:LEU:HB2	1.95	0.65
7:C:322:GLU:HB3	7:C:326:LEU:HD13	1.79	0.64
6:F:381:TYR:O	6:F:385:ALA:CB	2.45	0.64
6:F:197:GLU:O	6:F:201:ALA:CB	2.46	0.64
6:F:204:LEU:HD23	6:F:205:PRO:HD3	1.79	0.64
3:B:198:LYS:O	3:B:202:GLU:HB2	1.98	0.63
6:F:196:GLN:O	6:F:200:GLU:HB2	1.98	0.63
7:C:165:ILE:HD12	7:C:290:LYS:HD3	1.79	0.63
3:B:361:LYS:HG2	3:B:391:SER:HA	1.80	0.63
7:C:259:LEU:O	7:C:263:SER:CB	2.47	0.63
7:C:273:MET:HG3	7:C:307:ARG:HH11	1.62	0.62
7:C:174:LEU:HB2	7:C:178:LEU:HD13	1.81	0.62
7:C:259:LEU:O	7:C:263:SER:HB3	2.00	0.62
3:B:395:ILE:HA	3:B:398:ILE:HG12	1.81	0.62
2:A:328:ASP:O	2:A:332:MET:HB2	2.00	0.61
5:E:312:ILE:O	5:E:316:HIS:HB2	1.99	0.61
5:E:331:ILE:HG22	5:E:343:LEU:HD11	1.81	0.61
4:D:200:ARG:HE	4:D:303:VAL:HG21	1.66	0.61
6:F:224:LEU:HD13	6:F:348:LEU:HD13	1.83	0.61
1:G:152:LEU:HD23	1:G:187:GLU:HG2	1.83	0.61
7:C:184:LYS:HD2	7:C:277:LEU:HD22	1.80	0.61
5:E:204:VAL:HA	6:F:304:ARG:HH12	1.64	0.61
4:D:181:VAL:O	4:D:306:LYS:NZ	2.31	0.60
7:C:167:LEU:HD21	7:C:174:LEU:HD11	1.82	0.60
7:C:329:LEU:O	7:C:333:SER:HB3	2.01	0.60
2:A:397:ILE:O	2:A:400:ARG:NH1	2.34	0.60
5:E:325:GLU:O	5:E:364:GLN:NE2	2.35	0.60
7:C:325:ARG:HD3	7:C:348:ALA:HB1	1.83	0.60
7:C:147:THR:HG23	7:C:149:GLU:H	1.66	0.60
2:A:172:VAL:HG13	2:A:357:ILE:HD13	1.83	0.59
3:B:398:ILE:O	3:B:402:ALA:CB	2.49	0.59
7:C:294:ALA:HA	7:C:300:ILE:HG13	1.83	0.59
7:C:297:ARG:HG2	7:C:298:ILE:HD12	1.82	0.59
7:C:298:ILE:O	7:C:301:LEU:N	2.34	0.59
1:G:178:LEU:HG	4:D:338:ARG:HH12	1.67	0.59
5:E:213:ARG:NH1	5:E:217:GLU:OE1	2.35	0.59
5:E:309:ARG:NH1	5:E:339:ASN:O	2.36	0.59

Continued on next page...

Continued from previous page...

Atom-1	Atom-2	Interatomic distance (Å)	Clash overlap (Å)
6:F:197:GLU:O	6:F:201:ALA:HB3	2.03	0.59
1:G:103:ASN:HD21	1:G:107:CYS:HB2	1.68	0.59
3:B:390:LEU:HD21	3:B:394:ASP:H	1.68	0.59
1:G:152:LEU:HD21	1:G:190:LEU:HD23	1.86	0.58
2:A:261:PHE:HE2	2:A:305:GLN:HB3	1.68	0.58
7:C:362:VAL:O	7:C:366:ALA:CB	2.51	0.58
4:D:200:ARG:HB3	4:D:303:VAL:HG11	1.85	0.58
6:F:233:LYS:O	6:F:237:ALA:HB3	2.04	0.58
2:A:328:ASP:N	2:A:329:PRO:HD3	2.19	0.58
6:F:271:ALA:O	6:F:275:ALA:HB3	2.05	0.57
5:E:183:LEU:HD12	5:E:339:ASN:HD21	1.70	0.57
3:B:234:LEU:HD13	3:B:330:ALA:HB1	1.86	0.56
7:C:186:VAL:HG23	7:C:313:ARG:HB3	1.87	0.56
1:G:103:ASN:OD1	1:G:107:CYS:N	2.38	0.56
2:A:417:ILE:O	2:A:421:ALA:CB	2.53	0.56
5:E:309:ARG:HD2	5:E:332:VAL:HG13	1.88	0.56
5:E:305:ASN:HB3	5:E:308:ALA:HB3	1.88	0.56
3:B:268:ARG:HA	3:B:315:GLN:HE22	1.70	0.56
7:C:174:LEU:HD12	7:C:178:LEU:HD22	1.87	0.56
1:G:180:CYS:HB3	1:G:212:ALA:HB2	1.88	0.56
3:B:382:ASP:O	3:B:386:ALA:HB2	2.05	0.56
3:B:398:ILE:HA	3:B:401:GLU:HG2	1.86	0.56
7:C:369:TYR:HA	7:C:372:ARG:HG2	1.86	0.56
4:D:200:ARG:HH21	4:D:326:ARG:HG3	1.69	0.56
3:B:251:VAL:HG13	3:B:285:ASP:HB3	1.88	0.55
2:A:398:ARG:HH12	3:B:196:GLU:HA	1.71	0.55
4:D:244:PRO:O	4:D:248:ARG:HB2	2.06	0.55
4:D:341:LYS:HA	4:D:344:ILE:HG22	1.88	0.55
3:B:217:LYS:O	3:B:219:PRO:HD3	2.07	0.55
7:C:297:ARG:HG2	7:C:298:ILE:H	1.71	0.55
3:B:333:ARG:HB3	3:B:336:THR:HG23	1.87	0.54
3:B:202:GLU:O	3:B:206:THR:OG1	2.24	0.54
7:C:158:ILE:HA	7:C:161:ILE:HG22	1.89	0.54
7:C:259:LEU:O	7:C:263:SER:OG	2.26	0.54
1:G:5:VAL:HG12	4:D:392:TYR:HB2	1.89	0.54
4:D:178:ARG:HD3	4:D:182:GLU:HG3	1.89	0.54
2:A:401:ARG:NH1	2:A:403:ILE:O	2.40	0.53
4:D:208:PRO:HB2	4:D:335:LEU:HB2	1.90	0.53
3:B:387:LYS:H	3:B:387:LYS:HD2	1.73	0.53
5:E:371:VAL:O	5:E:375:ALA:CB	2.55	0.53
7:C:295:THR:HG23	7:C:300:ILE:HD11	1.90	0.53

Continued on next page...

Continued from previous page...

Atom-1	Atom-2	Interatomic distance (Å)	Clash overlap (Å)
7:C:344:LEU:O	7:C:348:ALA:CB	2.54	0.53
7:C:362:VAL:HG13	7:C:386:ALA:HB3	1.90	0.53
6:F:233:LYS:O	6:F:237:ALA:CB	2.57	0.53
6:F:341:ALA:O	6:F:347:ARG:NH2	2.42	0.53
3:B:369:THR:HG22	3:B:374:LEU:HD21	1.90	0.53
5:E:173:TYR:HA	5:E:180:LYS:HE2	1.91	0.53
6:F:342:LEU:HD13	6:F:348:LEU:HD12	1.91	0.53
7:C:329:LEU:O	7:C:333:SER:CB	2.57	0.53
1:G:48:CYS:HB3	1:G:80:ALA:HB2	1.90	0.52
3:B:231:GLY:O	3:B:235:LEU:CB	2.57	0.52
5:E:335:SER:HB2	5:E:343:LEU:HD13	1.91	0.52
2:A:411:GLU:O	2:A:415:LYS:CB	2.58	0.52
6:F:288:LEU:HD12	6:F:291:ILE:HD11	1.92	0.52
3:B:195:GLN:HA	3:B:198:LYS:HB3	1.91	0.52
4:D:207:PRO:HG2	4:D:208:PRO:HD3	1.92	0.52
7:C:362:VAL:O	7:C:366:ALA:HB3	2.10	0.52
6:F:362:ARG:HD3	6:F:365:ILE:HD11	1.92	0.52
5:E:197:LYS:HB3	6:F:315:ASN:HD21	1.75	0.51
6:F:205:PRO:HA	6:F:212:PHE:HE2	1.75	0.51
7:C:313:ARG:NH1	7:C:314:LYS:O	2.43	0.51
1:G:157:ILE:HA	1:G:160:TYR:HD2	1.76	0.51
2:A:414:ASN:HA	2:A:417:ILE:HG12	1.90	0.51
5:E:180:LYS:HG3	5:E:278:ALA:HB1	1.91	0.51
2:A:312:ARG:HG2	2:A:315:ILE:HG23	1.91	0.51
3:B:402:ALA:O	3:B:406:ALA:CB	2.59	0.51
4:D:355:SER:HB2	4:D:393:ILE:HG21	1.93	0.51
5:E:216:ARG:O	5:E:220:ASN:CB	2.53	0.51
7:C:157:GLN:O	7:C:161:ILE:HB	2.11	0.51
2:A:315:ILE:HG13	2:A:316:LYS:H	1.76	0.51
3:B:417:GLU:O	3:B:421:LYS:HB2	2.11	0.51
7:C:163:GLU:HA	7:C:167:LEU:HB2	1.93	0.51
1:G:89:VAL:HG11	1:G:121:ILE:HG23	1.93	0.50
3:B:339:PRO:HA	3:B:342:ILE:HD12	1.92	0.50
7:C:201:ARG:O	7:C:205:HIS:HB2	2.11	0.50
3:B:222:VAL:HG12	3:B:349:ARG:HB3	1.94	0.50
5:E:356:ARG:HD2	6:F:350:ARG:HH12	1.76	0.50
7:C:344:LEU:HA	7:C:347:ILE:HG22	1.93	0.50
5:E:369:LYS:O	5:E:373:LYS:HB2	2.11	0.50
6:F:362:ARG:O	6:F:366:MET:HB2	2.12	0.50
1:G:10:VAL:O	1:G:14:ALA:CB	2.59	0.50
3:B:401:GLU:O	3:B:405:MET:CB	2.59	0.50

Continued on next page...

Continued from previous page...

Atom-1	Atom-2	Interatomic distance (Å)	Clash overlap (Å)
6:F:272:PHE:O	6:F:276:LYS:CB	2.49	0.50
3:B:402:ALA:O	3:B:406:ALA:HB3	2.12	0.50
2:A:368:ILE:HD11	2:A:405:THR:HG23	1.94	0.50
4:D:216:ALA:O	4:D:220:ALA:HB2	2.12	0.50
6:F:391:PHE:HE2	6:F:424:ILE:HG23	1.76	0.50
5:E:232:MET:N	5:E:276:ILE:O	2.41	0.49
2:A:329:PRO:O	2:A:333:ARG:HB3	2.12	0.49
2:A:187:LEU:HD22	2:A:214:LEU:HD11	1.94	0.49
2:A:392:ALA:O	2:A:396:ALA:HB2	2.13	0.49
1:G:111:HIS:HE2	1:G:141:THR:HA	1.77	0.49
1:G:145:ARG:HH22	4:D:362:ASP:HB3	1.78	0.49
6:F:193:LYS:HD2	6:F:364:ARG:HB3	1.94	0.49
2:A:388:VAL:O	2:A:392:ALA:CB	2.60	0.49
7:C:167:LEU:HB3	7:C:168:PRO:HD3	1.95	0.49
1:G:111:HIS:O	1:G:115:SER:CB	2.59	0.49
2:A:214:LEU:HB3	2:A:343:PHE:HD1	1.78	0.48
2:A:333:ARG:HG2	2:A:334:PRO:HD3	1.95	0.48
1:G:13:LEU:HB3	1:G:18:LYS:HB2	1.95	0.48
6:F:221:LYS:HZ2	6:F:324:THR:HA	1.77	0.48
2:A:317:VAL:HG11	2:A:336:ARG:HH22	1.77	0.48
6:F:373:MET:SD	6:F:373:MET:N	2.87	0.48
6:F:403:ALA:HB1	6:F:415:LEU:HD11	1.95	0.48
3:B:346:ARG:HH21	3:B:350:LYS:H	1.61	0.48
1:G:51:GLY:HA2	1:G:88:ILE:HG13	1.96	0.48
5:E:207:TYR:HD2	5:E:209:GLY:H	1.61	0.48
5:E:312:ILE:HG23	5:E:316:HIS:HD2	1.79	0.48
5:E:378:LYS:O	5:E:382:SER:CB	2.57	0.48
2:A:312:ARG:HG3	2:A:314:ASN:H	1.78	0.48
3:B:333:ARG:HG2	3:B:335:GLU:H	1.79	0.48
7:C:198:LEU:O	7:C:202:ALA:CB	2.62	0.47
5:E:261:LEU:HD11	5:E:294:ARG:HE	1.79	0.47
6:F:308:ARG:O	6:F:312:GLU:HB2	2.14	0.47
6:F:234:THR:OG1	6:F:286:ASP:OD2	2.32	0.47
3:B:358:GLU:O	3:B:362:LYS:HB2	2.15	0.47
5:E:320:ILE:HD13	6:F:217:ILE:HD11	1.95	0.47
4:D:216:ALA:O	4:D:220:ALA:CB	2.62	0.47
4:D:218:ALA:O	4:D:222:HIS:ND1	2.34	0.47
3:B:192:ASN:HA	3:B:195:GLN:HG2	1.96	0.47
7:C:154:LEU:HD21	7:C:317:PHE:HE1	1.80	0.47
7:C:345:ARG:O	7:C:349:GLU:HB2	2.15	0.47
4:D:239:TYR:O	4:D:240:LEU:HG	2.14	0.47

Continued on next page...

Continued from previous page...

Atom-1	Atom-2	Interatomic distance (Å)	Clash overlap (Å)
6:F:374:ASN:HB3	6:F:414:GLU:HG3	1.96	0.47
2:A:406:GLU:O	2:A:410:LEU:HB3	2.14	0.46
3:B:382:ASP:O	3:B:386:ALA:CA	2.64	0.46
7:C:161:ILE:HD11	7:C:186:VAL:HG11	1.97	0.46
7:C:325:ARG:O	7:C:329:LEU:HB2	2.16	0.46
2:A:298:THR:O	2:A:302:LEU:CB	2.54	0.46
1:G:111:HIS:HA	1:G:142:ALA:HB2	1.96	0.46
7:C:246:ILE:HB	7:C:291:VAL:HG12	1.97	0.46
4:D:401:LYS:HA	4:D:404:LYS:HE2	1.97	0.46
5:E:215:ILE:O	5:E:219:PHE:HB2	2.15	0.46
6:F:325:GLN:HG2	6:F:326:VAL:H	1.80	0.46
4:D:340:GLN:O	4:D:344:ILE:HB	2.15	0.46
5:E:232:MET:HB2	5:E:277:MET:HA	1.98	0.46
7:C:361:GLY:O	7:C:365:GLU:HB2	2.16	0.46
2:A:271:LEU:HD23	2:A:316:LYS:HD2	1.96	0.46
7:C:262:GLY:O	7:C:266:ASP:HB2	2.13	0.46
5:E:360:ASP:N	5:E:360:ASP:OD1	2.47	0.45
2:A:407:LYS:HA	2:A:410:LEU:HD23	1.98	0.45
1:G:75:SER:OG	1:G:78:HIS:ND1	2.39	0.45
3:B:255:LEU:HA	3:B:258:LYS:HG2	1.99	0.45
3:B:269:GLU:HA	3:B:272:ARG:HG2	1.97	0.45
7:C:203:VAL:O	7:C:207:THR:OG1	2.24	0.45
4:D:185:LEU:O	4:D:186:THR:HG22	2.17	0.45
2:A:411:GLU:O	2:A:415:LYS:HB3	2.17	0.45
4:D:174:LYS:O	4:D:178:ARG:HB2	2.17	0.45
5:E:349:GLU:HG2	5:E:374:VAL:HG21	1.99	0.45
6:F:197:GLU:O	6:F:201:ALA:HB2	2.17	0.45
7:C:229:ARG:HG2	7:C:231:VAL:HG22	1.99	0.45
6:F:274:LEU:O	6:F:278:LYS:CB	2.58	0.45
2:A:402:LYS:HE2	3:B:210:TYR:HE1	1.82	0.45
5:E:312:ILE:HG23	5:E:316:HIS:CD2	2.51	0.45
6:F:301:ALA:HB3	6:F:304:ARG:HE	1.82	0.45
7:C:200:ALA:O	7:C:204:ALA:CB	2.66	0.45
1:G:173:ASN:OD1	1:G:202:ASN:ND2	2.33	0.44
4:D:252:ARG:HA	4:D:255:LYS:HG2	2.00	0.44
3:B:382:ASP:O	3:B:386:ALA:HA	2.18	0.44
5:E:288:ALA:O	5:E:294:ARG:NH1	2.48	0.44
6:F:193:LYS:HG3	6:F:194:GLN:OE1	2.18	0.44
3:B:355:LEU:HD12	3:B:357:ASP:HB3	1.98	0.44
6:F:224:LEU:HB3	6:F:351:LYS:HA	1.99	0.44
2:A:277:ILE:HG22	2:A:321:THR:HG21	1.99	0.44

Continued on next page...

Continued from previous page...

Atom-1	Atom-2	Interatomic distance (Å)	Clash overlap (Å)
3:B:401:GLU:O	3:B:405:MET:HB3	2.18	0.44
4:D:188:PHE:HZ	4:D:259:PRO:HD3	1.82	0.44
7:C:298:ILE:HG23	7:C:301:LEU:HB2	2.00	0.44
6:F:276:LYS:O	6:F:325:GLN:NE2	2.51	0.43
4:D:244:PRO:O	4:D:248:ARG:CB	2.66	0.43
7:C:346:LYS:HA	7:C:350:LEU:HD13	2.00	0.43
1:G:70:ASP:OD1	1:G:74:TRP:N	2.50	0.43
1:G:123:VAL:O	1:G:127:GLU:HB2	2.19	0.43
5:E:210:GLU:O	5:E:213:ARG:HG3	2.18	0.43
7:C:236:VAL:HG22	7:C:239:ARG:HH12	1.82	0.43
6:F:219:PRO:HG2	6:F:221:LYS:HZ3	1.84	0.43
3:B:383:LEU:HD13	3:B:419:PHE:HE2	1.83	0.43
2:A:171:ASP:OD1	2:A:171:ASP:N	2.49	0.43
4:D:242:GLU:HG3	4:D:246:MET:HG3	2.00	0.43
5:E:235:ILE:HG13	5:E:238:ILE:HD11	2.00	0.43
6:F:304:ARG:HA	6:F:307:GLN:HB2	2.01	0.43
3:B:187:ILE:HD11	3:B:194:ILE:HD12	2.00	0.43
3:B:390:LEU:HD21	3:B:394:ASP:N	2.33	0.43
5:E:207:TYR:HE2	5:E:210:GLU:H	1.65	0.43
2:A:348:LEU:HD12	2:A:351:ARG:HH12	1.84	0.43
2:A:397:ILE:HG13	3:B:214:MET:HG3	2.01	0.43
4:D:323:ARG:NH1	4:D:324:PRO:O	2.51	0.43
6:F:422:GLU:O	6:F:426:GLU:HB2	2.19	0.43
4:D:235:PHE:HB2	4:D:240:LEU:HA	2.01	0.43
2:A:206:ILE:HD13	6:F:397:LYS:HD2	2.01	0.42
2:A:347:ASP:O	2:A:351:ARG:NH2	2.52	0.42
3:B:197:ILE:O	3:B:201:VAL:HG22	2.19	0.42
4:D:179:GLU:HA	4:D:183:LEU:HB3	2.01	0.42
5:E:171:LEU:HD22	5:E:295:LEU:HD13	2.01	0.42
3:B:220:LYS:HG2	3:B:347:ILE:H	1.84	0.42
2:A:339:ARG:NH2	6:F:402:GLU:OE1	2.52	0.42
3:B:283:PHE:CE2	3:B:285:ASP:HB2	2.54	0.42
7:C:154:LEU:HD21	7:C:317:PHE:CE1	2.54	0.42
7:C:362:VAL:O	7:C:366:ALA:HB2	2.19	0.42
1:G:144:HIS:HB3	1:G:178:LEU:HD22	2.01	0.42
3:B:313:LEU:HD11	3:B:344:PRO:HG2	2.01	0.42
3:B:394:ASP:OD2	3:B:430:LYS:NZ	2.46	0.42
2:A:184:ILE:HD12	2:A:187:LEU:HD21	2.02	0.42
4:D:370:ILE:H	4:D:370:ILE:HG13	1.70	0.42
2:A:197:HIS:HE1	2:A:200:ARG:HH11	1.68	0.42
4:D:397:LYS:O	4:D:401:LYS:HB2	2.20	0.42

Continued on next page...

Continued from previous page...

Atom-1	Atom-2	Interatomic distance (Å)	Clash overlap (Å)
6:F:273:ALA:O	6:F:277:GLU:CB	2.53	0.42
3:B:191:ASP:HA	3:B:194:ILE:HG22	2.02	0.42
3:B:264:PRO:HG3	3:B:311:GLU:HG2	2.01	0.42
5:E:253:ILE:O	5:E:257:LEU:HB2	2.20	0.42
7:C:200:ALA:O	7:C:204:ALA:HB3	2.20	0.42
3:B:316:LEU:HD11	3:B:327:VAL:HG11	2.00	0.42
4:D:366:ARG:HB3	4:D:367:PRO:HD3	2.02	0.41
6:F:330:ALA:HB3	6:F:348:LEU:HD11	2.02	0.41
2:A:240:VAL:N	2:A:273:PHE:O	2.48	0.41
2:A:411:GLU:O	2:A:415:LYS:HB2	2.19	0.41
3:B:357:ASP:O	3:B:358:GLU:HG2	2.20	0.41
7:C:296:ASN:ND2	7:C:354:ALA:O	2.54	0.41
1:G:13:LEU:O	1:G:18:LYS:N	2.50	0.41
5:E:175:PRO:HA	5:E:282:PRO:HB3	2.02	0.41
3:B:382:ASP:O	3:B:386:ALA:CB	2.67	0.41
4:D:214:MET:O	4:D:218:ALA:HB2	2.20	0.41
5:E:304:PRO:HB2	5:E:309:ARG:HH21	1.85	0.41
6:F:247:THR:HB	6:F:281:SER:HA	2.02	0.41
7:C:187:LEU:HD23	7:C:312:ASP:OD2	2.20	0.41
7:C:198:LEU:O	7:C:202:ALA:HB2	2.20	0.41
2:A:303:ILE:O	2:A:307:ASP:HB2	2.20	0.41
2:A:328:ASP:OD2	2:A:332:MET:HG2	2.21	0.41
2:A:351:ARG:HD2	2:A:385:ILE:HG21	2.03	0.41
2:A:388:VAL:O	2:A:392:ALA:HB3	2.21	0.41
7:C:254:ILE:HG21	7:C:394:ASP:HB3	2.03	0.41
1:G:10:VAL:O	1:G:14:ALA:HB2	2.21	0.41
1:G:78:HIS:HE1	1:G:101:ALA:HB3	1.86	0.41
2:A:293:ASN:HD21	6:F:259:MET:HB3	1.85	0.41
2:A:412:ALA:O	2:A:416:VAL:HB	2.20	0.41
3:B:270:LEU:HA	3:B:273:VAL:HG12	2.03	0.41
4:D:204:MET:N	4:D:309:MET:O	2.41	0.41
7:C:238:ALA:O	7:C:286:THR:OG1	2.34	0.41
3:B:387:LYS:HG2	3:B:388:ASP:N	2.32	0.41
3:B:401:GLU:O	3:B:405:MET:HB2	2.21	0.41
4:D:346:SER:HA	4:D:349:THR:HG22	2.03	0.40
6:F:241:ALA:O	6:F:244:THR:OG1	2.33	0.40
1:G:52:HIS:HB3	1:G:55:ILE:HD13	2.02	0.40
3:B:262:ASP:OD2	3:B:265:LYS:HB2	2.21	0.40
4:D:214:MET:SD	4:D:344:ILE:HD11	2.61	0.40
7:C:191:PRO:HA	7:C:192:PRO:HD3	1.90	0.40
1:G:126:LEU:HD11	1:G:158:LEU:HD23	2.04	0.40

Continued on next page...

Continued from previous page...

Atom-1	Atom-2	Interatomic distance (Å)	Clash overlap (Å)
3:B:260:LEU:HD13	3:B:261:GLY:N	2.36	0.40
4:D:184:PRO:HG3	4:D:191:TYR:CZ	2.57	0.40
5:E:204:VAL:HA	6:F:304:ARG:NH1	2.34	0.40
2:A:180:CYS:SG	2:A:183:GLN:HB2	2.61	0.40
5:E:309:ARG:HG3	5:E:340:GLY:HA2	2.03	0.40

There are no symmetry-related clashes.

5.3 Torsion angles [i](#)

5.3.1 Protein backbone [i](#)

In the following table, the Percentiles column shows the percent Ramachandran outliers of the chain as a percentile score with respect to all PDB entries followed by that with respect to all EM entries.

The Analysed column shows the number of residues for which the backbone conformation was analysed, and the total number of residues.

Mol	Chain	Analysed	Favoured	Allowed	Outliers	Percentiles	
1	G	192/223 (86%)	186 (97%)	6 (3%)	0	100	100
2	A	251/267 (94%)	215 (86%)	36 (14%)	0	100	100
3	B	240/267 (90%)	220 (92%)	20 (8%)	0	100	100
4	D	203/262 (78%)	189 (93%)	14 (7%)	0	100	100
5	E	205/262 (78%)	194 (95%)	11 (5%)	0	100	100
6	F	236/267 (88%)	221 (94%)	15 (6%)	0	100	100
7	C	233/266 (88%)	217 (93%)	16 (7%)	0	100	100
8	f	664/848 (78%)	598 (90%)	65 (10%)	1 (0%)	47	81
All	All	2224/2662 (84%)	2040 (92%)	183 (8%)	1 (0%)	100	100

All (1) Ramachandran outliers are listed below:

Mol	Chain	Res	Type
8	f	326	LEU

5.3.2 Protein sidechains [i](#)

In the following table, the Percentiles column shows the percent sidechain outliers of the chain as a percentile score with respect to all PDB entries followed by that with respect to all EM entries.

The Analysed column shows the number of residues for which the sidechain conformation was analysed, and the total number of residues.

Mol	Chain	Analysed	Rotameric	Outliers	Percentiles	
1	G	156/178 (88%)	154 (99%)	2 (1%)	69	81
2	A	220/225 (98%)	219 (100%)	1 (0%)	88	93
3	B	210/231 (91%)	207 (99%)	3 (1%)	67	80
4	D	177/224 (79%)	174 (98%)	3 (2%)	60	78
5	E	178/225 (79%)	173 (97%)	5 (3%)	43	65
6	F	197/222 (89%)	195 (99%)	2 (1%)	76	86
7	C	199/225 (88%)	196 (98%)	3 (2%)	65	80
8	f	579/714 (81%)	568 (98%)	11 (2%)	57	75
All	All	1916/2244 (85%)	1886 (98%)	30 (2%)	64	79

All (30) residues with a non-rotameric sidechain are listed below:

Mol	Chain	Res	Type
1	G	116	LYS
1	G	117	ASN
2	A	317	VAL
3	B	260	LEU
3	B	322	ARG
3	B	387	LYS
4	D	183	LEU
4	D	186	THR
4	D	391	ARG
5	E	213	ARG
5	E	216	ARG
5	E	262	ASN
5	E	264	MET
5	E	269	THR
6	F	204	LEU
6	F	323	ASN
7	C	286	THR
7	C	334	ARG
7	C	336	MET

Continued on next page...

Continued from previous page...

Mol	Chain	Res	Type
8	f	39	LYS
8	f	184	LEU
8	f	188	VAL
8	f	275	MET
8	f	460	ASP
8	f	473	ASN
8	f	493	ASN
8	f	565	ASN
8	f	639	LYS
8	f	745	LEU
8	f	788	MET

Sometimes sidechains can be flipped to improve hydrogen bonding and reduce clashes. All (20) such sidechains are listed below:

Mol	Chain	Res	Type
1	G	117	ASN
1	G	119	HIS
2	A	197	HIS
2	A	293	ASN
3	B	193	GLN
3	B	315	GLN
5	E	190	GLN
5	E	262	ASN
5	E	316	HIS
5	E	339	ASN
5	E	364	GLN
6	F	307	GLN
6	F	315	ASN
6	F	323	ASN
7	C	337	ASN
8	f	102	HIS
8	f	301	HIS
8	f	329	ASN
8	f	493	ASN
8	f	540	GLN

5.3.3 RNA [i](#)

There are no RNA molecules in this entry.

5.4 Non-standard residues in protein, DNA, RNA chains [i](#)

There are no non-standard protein/DNA/RNA residues in this entry.

5.5 Carbohydrates [i](#)

There are no monosaccharides in this entry.

5.6 Ligand geometry [i](#)

There are no ligands in this entry.

5.7 Other polymers [i](#)

There are no such residues in this entry.

5.8 Polymer linkage issues [i](#)

There are no chain breaks in this entry.

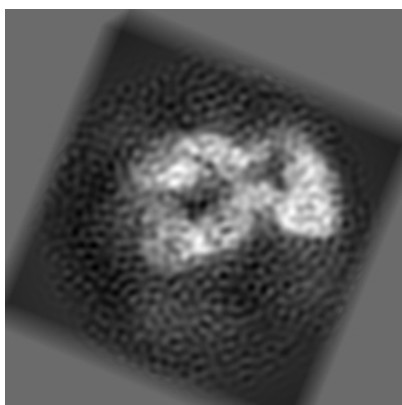
6 Map visualisation [i](#)

This section contains visualisations of the EMDB entry EMD-8680. These allow visual inspection of the internal detail of the map and identification of artifacts.

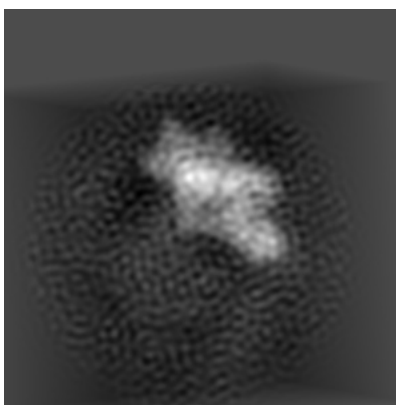
No raw map or half-maps were deposited for this entry and therefore no images, graphs, etc. pertaining to the raw map can be shown.

6.1 Orthogonal projections [i](#)

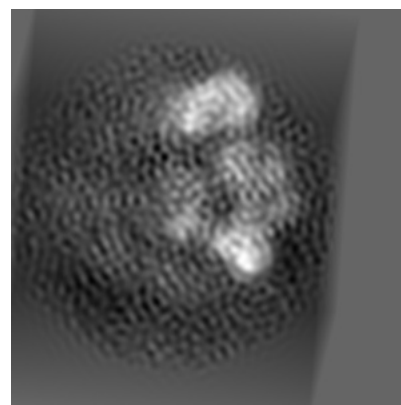
6.1.1 Primary map



X



Y

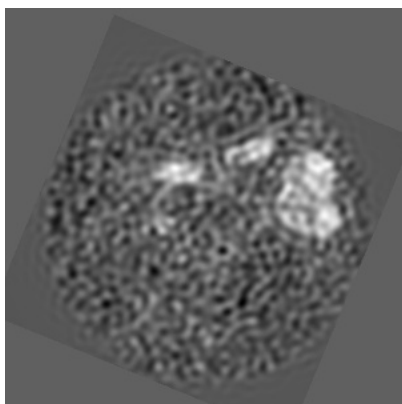


Z

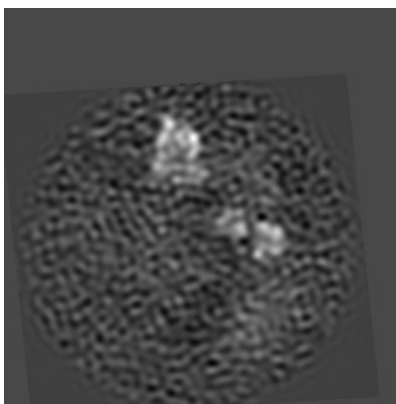
The images above show the map projected in three orthogonal directions.

6.2 Central slices [i](#)

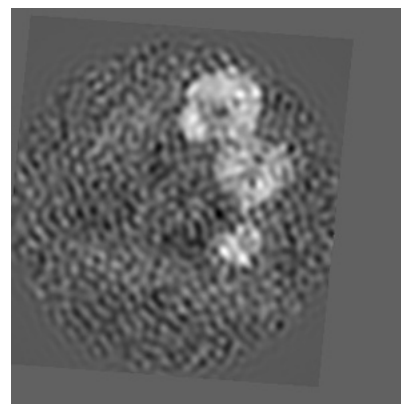
6.2.1 Primary map



X Index: 180



Y Index: 180

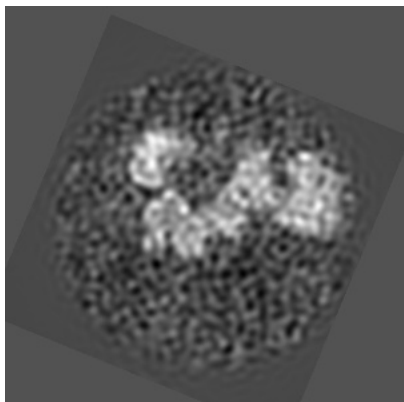


Z Index: 180

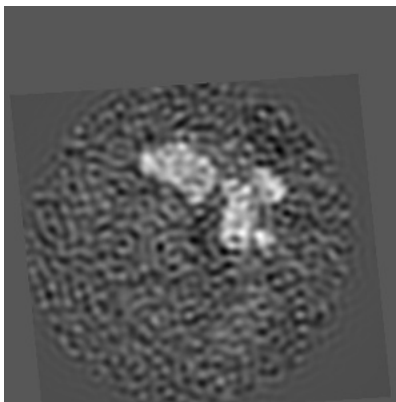
The images above show central slices of the map in three orthogonal directions.

6.3 Largest variance slices [i](#)

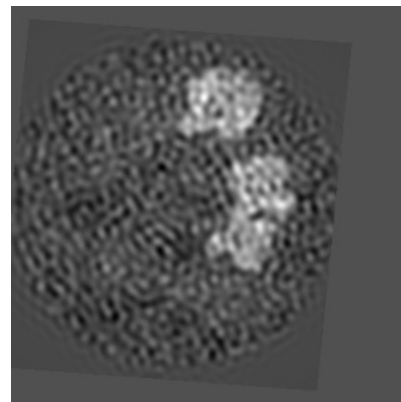
6.3.1 Primary map



X Index: 206



Y Index: 155

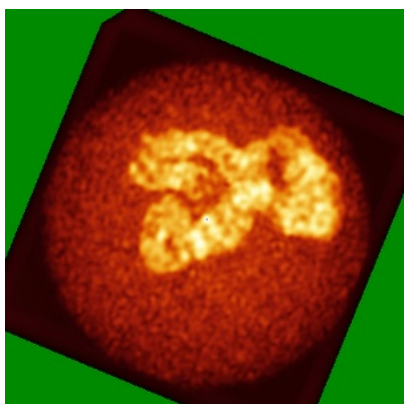


Z Index: 167

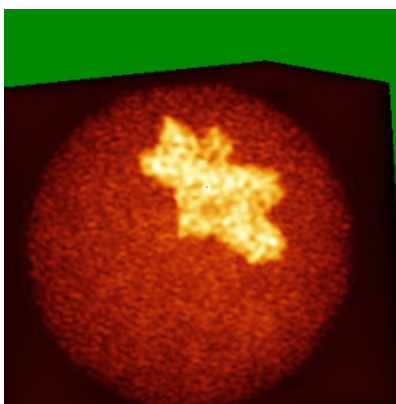
The images above show the largest variance slices of the map in three orthogonal directions.

6.4 Orthogonal standard-deviation projections (False-color) [i](#)

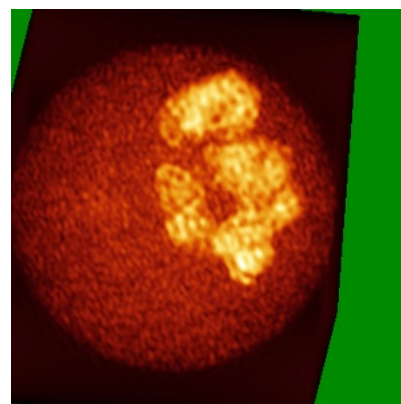
6.4.1 Primary map



X



Y

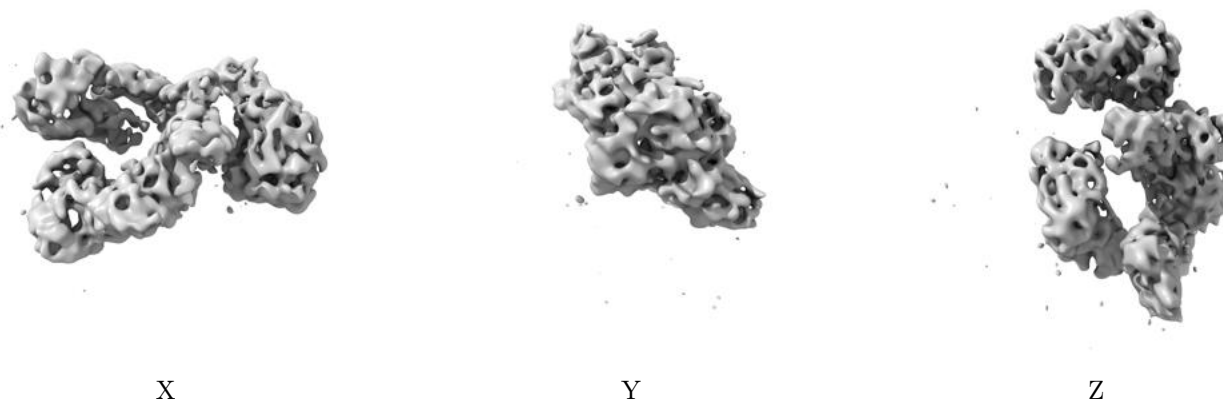


Z

The images above show the map standard deviation projections with false color in three orthogonal directions. Minimum values are shown in green, max in blue, and dark to light orange shades represent small to large values respectively.

6.5 Orthogonal surface views [i](#)

6.5.1 Primary map



The images above show the 3D surface view of the map at the recommended contour level 0.004. These images, in conjunction with the slice images, may facilitate assessment of whether an appropriate contour level has been provided.

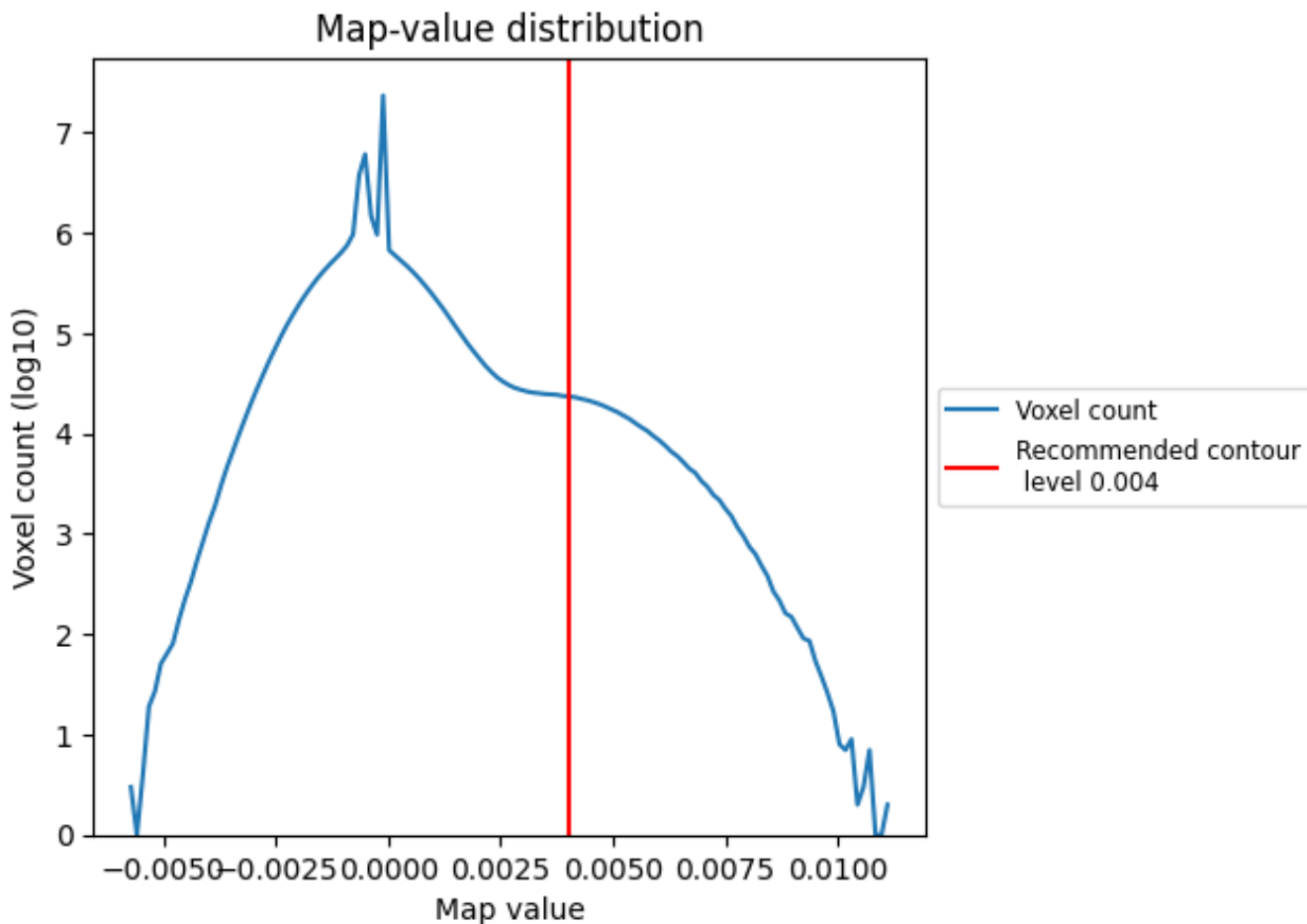
6.6 Mask visualisation [i](#)

This section was not generated. No masks/segmentation were deposited.

7 Map analysis [i](#)

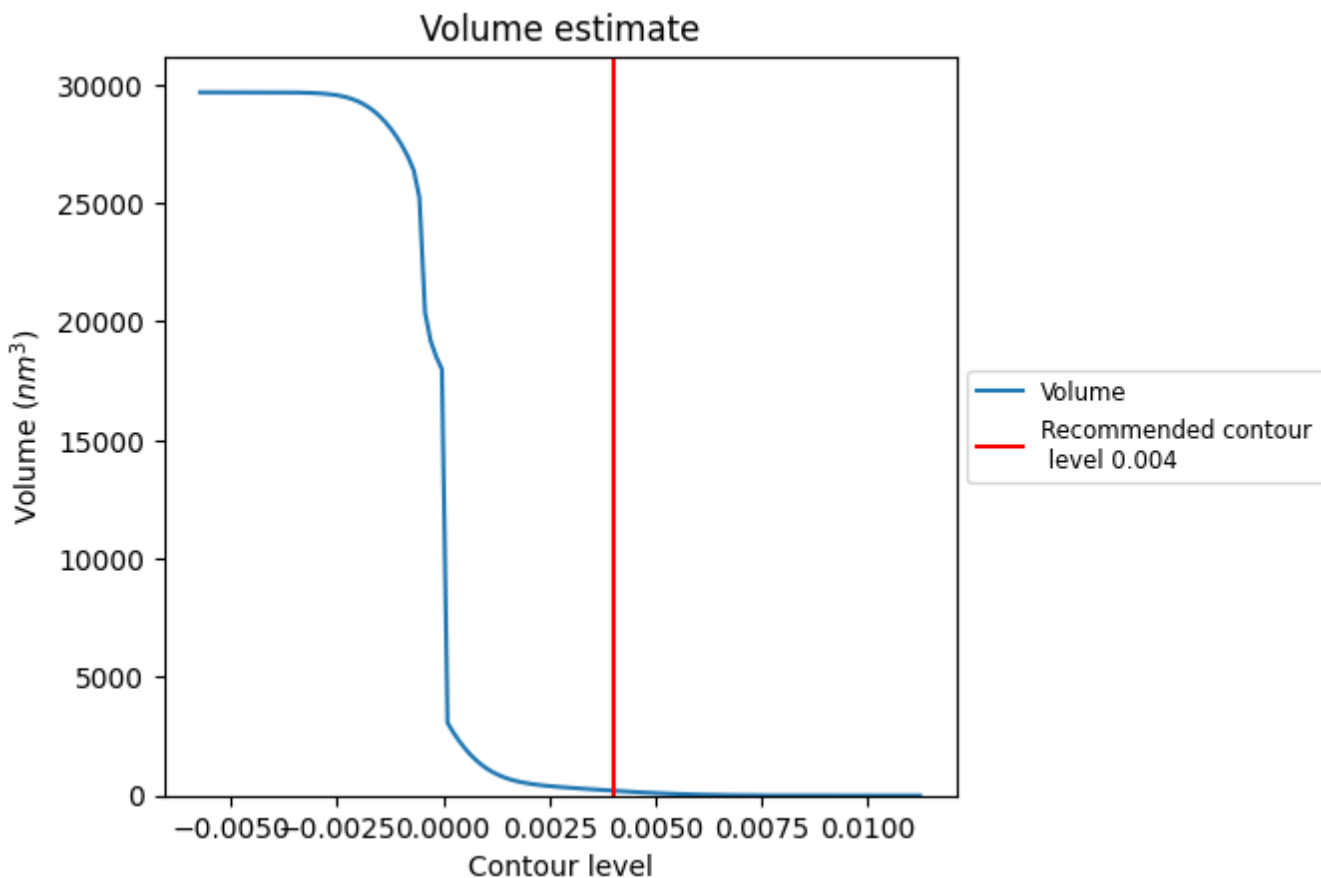
This section contains the results of statistical analysis of the map.

7.1 Map-value distribution [i](#)



The map-value distribution is plotted in 128 intervals along the x-axis. The y-axis is logarithmic. A spike in this graph at zero usually indicates that the volume has been masked.

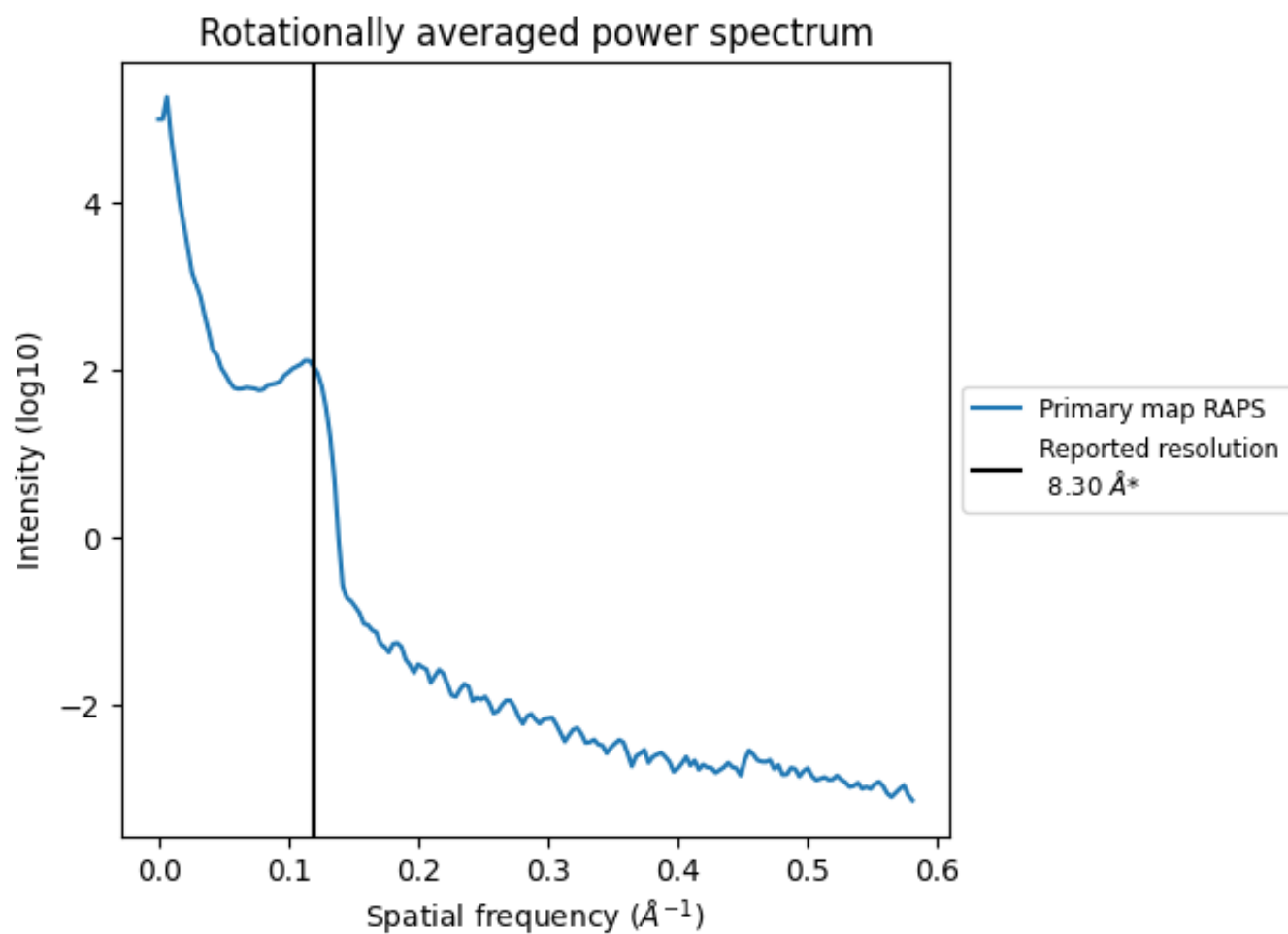
7.2 Volume estimate [i](#)



The volume at the recommended contour level is 206 nm³; this corresponds to an approximate mass of 186 kDa.

The volume estimate graph shows how the enclosed volume varies with the contour level. The recommended contour level is shown as a vertical line and the intersection between the line and the curve gives the volume of the enclosed surface at the given level.

7.3 Rotationally averaged power spectrum [i](#)



*Reported resolution corresponds to spatial frequency of 0.120\AA^{-1}

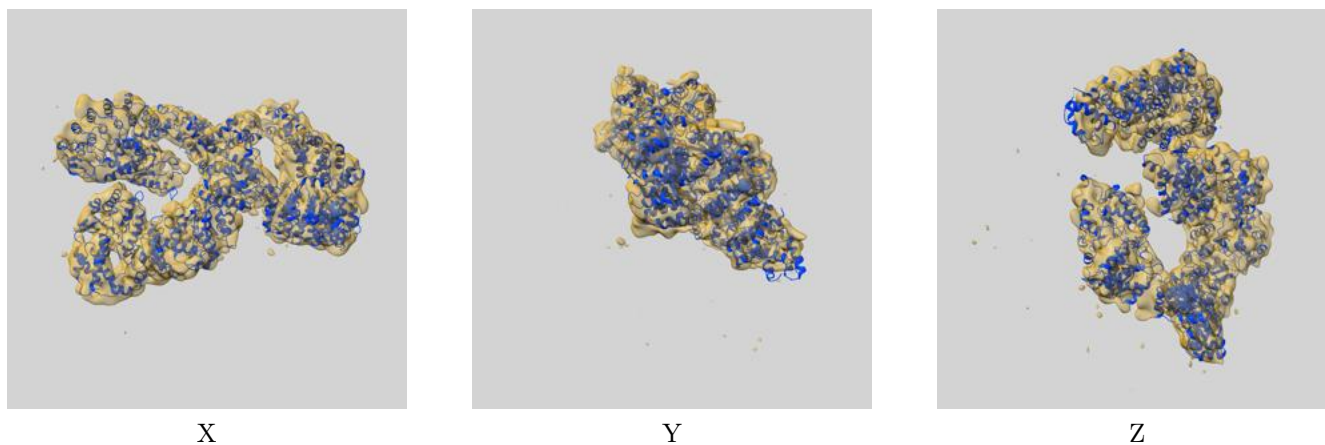
8 Fourier-Shell correlation

This section was not generated. No FSC curve or half-maps provided.

9 Map-model fit [i](#)

This section contains information regarding the fit between EMDB map EMD-8680 and PDB model 5VHO. Per-residue inclusion information can be found in section [3](#) on page [5](#).

9.1 Map-model overlay [i](#)



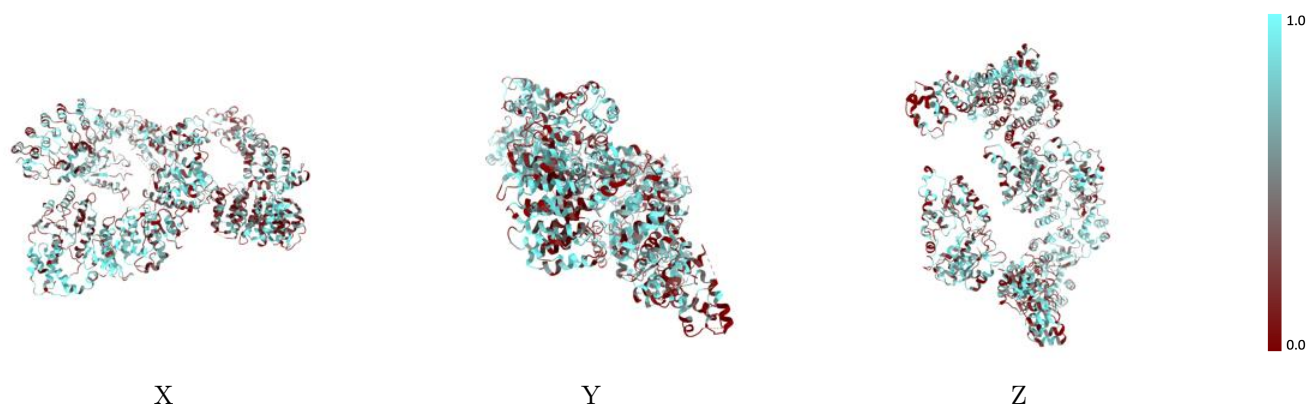
The images above show the 3D surface view of the map at the recommended contour level 0.004 at 50% transparency in yellow overlaid with a ribbon representation of the model coloured in blue. These images allow for the visual assessment of the quality of fit between the atomic model and the map.

9.2 Q-score mapped to coordinate model [i](#)



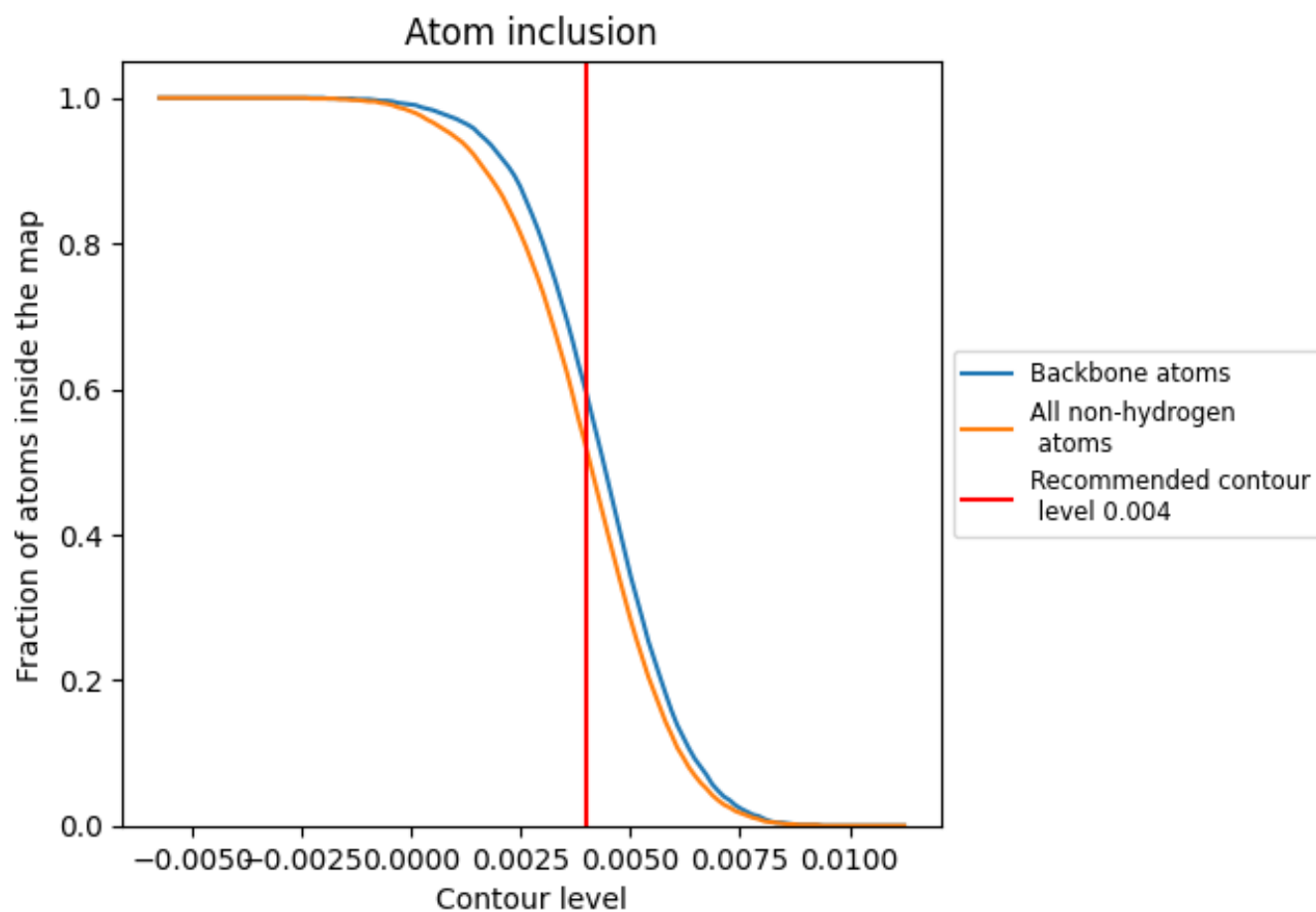
The images above show the model with each residue coloured according to its Q-score. This shows their resolvability in the map with higher Q-score values reflecting better resolvability. Please note: Q-score is calculating the resolvability of atoms, and thus high values are only expected at resolutions at which atoms can be resolved. Low Q-score values may therefore be expected for many entries.

9.3 Atom inclusion mapped to coordinate model [i](#)



The images above show the model with each residue coloured according to its atom inclusion. This shows to what extent they are inside the map at the recommended contour level (0.004).



















9.4 Atom inclusion [i](#)



At the recommended contour level, 59% of all backbone atoms, 52% of all non-hydrogen atoms, are inside the map.

9.5 Map-model fit summary [i](#)

The table lists the average atom inclusion at the recommended contour level (0.004) and Q-score for the entire model and for each chain.

Chain	Atom inclusion	Q-score
All	 0.5180	 0.0730
A	 0.5540	 0.0860
B	 0.5200	 0.0830
C	 0.5120	 0.1040
D	 0.4950	 0.0890
E	 0.5140	 0.0760
F	 0.6300	 0.0970
G	 0.5150	 0.0760
f	 0.4750	 0.0380

