



# Full wwPDB X-ray Structure Validation Report ⓘ

Sep 1, 2022 – 02:31 PM EDT

PDB ID : 5RLZ  
Title : PanDDA analysis group deposition – Crystal Structure of SARS-CoV-2 heli-  
case in complex with Z2293643386  
Authors : Newman, J.A.; Yosaatmadja, Y.; Douangamath, A.; Aimon, A.; Powell, A.J.;  
Dias, A.; Fearon, D.; Dunnett, L.; Brandao-Neto, J.; Krojer, T.; Skyner, R.;  
Gorrie-Stone, T.; Thompson, W.; von Delft, F.; Arrowsmith, C.H.; Edwards,  
A.; Bountra, C.; Gileadi, O.  
Deposited on : 2020-09-16  
Resolution : 1.97 Å(reported)

This is a Full wwPDB X-ray Structure Validation Report for a publicly released PDB entry.

We welcome your comments at [validation@mail.wwpdb.org](mailto:validation@mail.wwpdb.org)  
A user guide is available at  
<https://www.wwpdb.org/validation/2017/XrayValidationReportHelp>  
with specific help available everywhere you see the ⓘ symbol.

The types of validation reports are described at <http://www.wwpdb.org/validation/2017/FAQs#types>.

---

The following versions of software and data (see [references](#) ①) were used in the production of this report:

MolProbity : 4.02b-467  
Mogul : 1.8.5 (274361), CSD as541be (2020)  
Xtrriage (Phenix) : 1.13  
EDS : 2.29  
buster-report : 1.1.7 (2018)  
Percentile statistics : 20191225.v01 (using entries in the PDB archive December 25th 2019)  
Refmac : 5.8.0158  
CCP4 : 7.0.044 (Gargrove)  
Ideal geometry (proteins) : Engh & Huber (2001)  
Ideal geometry (DNA, RNA) : Parkinson et al. (1996)  
Validation Pipeline (wwPDB-VP) : 2.29

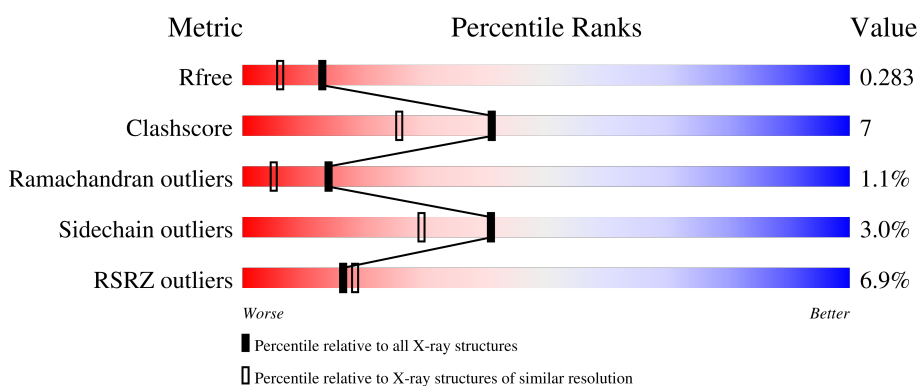
# 1 Overall quality at a glance i

The following experimental techniques were used to determine the structure:

*X-RAY DIFFRACTION*

The reported resolution of this entry is 1.97 Å.

Percentile scores (ranging between 0-100) for global validation metrics of the entry are shown in the following graphic. The table shows the number of entries on which the scores are based.



Metric	Whole archive (#Entries)	Similar resolution (#Entries, resolution range(Å))
$R_{free}$	130704	11647 (2.00-1.96)
Clashscore	141614	1014 (1.98-1.98)
Ramachandran outliers	138981	1006 (1.98-1.98)
Sidechain outliers	138945	1006 (1.98-1.98)
RSRZ outliers	127900	11410 (2.00-1.96)

The table below summarises the geometric issues observed across the polymeric chains and their fit to the electron density. The red, orange, yellow and green segments of the lower bar indicate the fraction of residues that contain outliers for  $\geq 3$ , 2, 1 and 0 types of geometric quality criteria respectively. A grey segment represents the fraction of residues that are not modelled. The numeric value for each fraction is indicated below the corresponding segment, with a dot representing fractions  $\leq 5\%$ . The upper red bar (where present) indicates the fraction of residues that have poor fit to the electron density. The numeric value is given above the bar.

Mol	Chain	Length	Quality of chain
1	A	601	 10% 78% 16% • 5%
1	B	601	 3% 79% 17% ••

## 2 Entry composition [i](#)

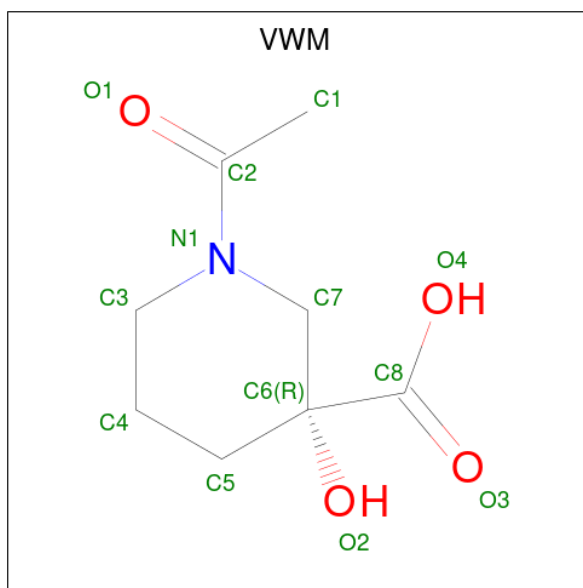
There are 5 unique types of molecules in this entry. The entry contains 9418 atoms, of which 0 are hydrogens and 0 are deuteriums.

In the tables below, the ZeroOcc column contains the number of atoms modelled with zero occupancy, the AltConf column contains the number of residues with at least one atom in alternate conformation and the Trace column contains the number of residues modelled with at most 2 atoms.

- Molecule 1 is a protein called Helicase.

Mol	Chain	Residues	Atoms					ZeroOcc	AltConf	Trace
			Total	C	N	O	S			
1	B	585	Total 4508	C 2875	N 750	O 848	S 35	0	1	0
1	A	572	Total 4417	C 2816	N 737	O 832	S 32	0	0	0

- Molecule 2 is (3R)-1-acetyl-3-hydroxypiperidine-3-carboxylic acid (three-letter code: VWM) (formula:  $C_8H_{13}NO_4$ ) (labeled as "Ligand of Interest" by depositor).



Mol	Chain	Residues	Atoms				ZeroOcc	AltConf
			Total	C	N	O		
2	B	1	Total 13	C 8	N 1	O 4	0	0

- Molecule 3 is ZINC ION (three-letter code: ZN) (formula: Zn).

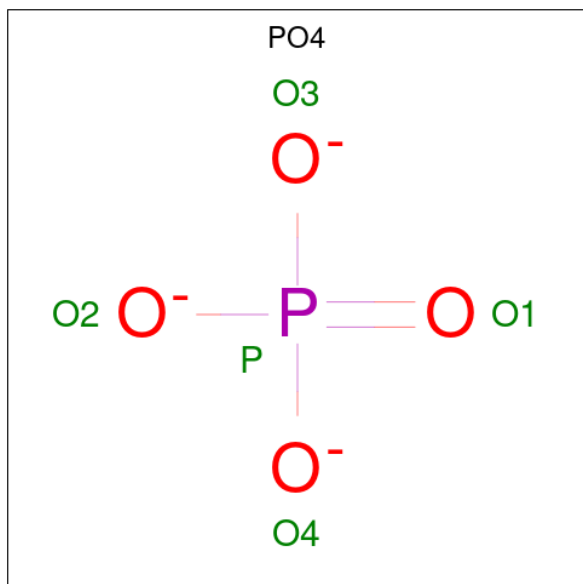
Mol	Chain	Residues	Atoms		ZeroOcc	AltConf
			Total	Zn		
3	B	3	Total 3	Zn 3	0	0

*Continued on next page...*

Continued from previous page...

Mol	Chain	Residues	Atoms	ZeroOcc	AltConf
3	A	3	Total Zn 3 3	0	0

- Molecule 4 is PHOSPHATE ION (three-letter code: PO4) (formula: O<sub>4</sub>P).



Mol	Chain	Residues	Atoms	ZeroOcc	AltConf
4	B	1	Total O P 5 4 1	0	0
4	B	1	Total O P 5 4 1	0	0
4	A	1	Total O P 5 4 1	0	0
4	A	1	Total O P 5 4 1	0	0

- Molecule 5 is water.

Mol	Chain	Residues	Atoms	ZeroOcc	AltConf
5	B	250	Total O 250 250	0	0
5	A	204	Total O 204 204	0	0



## 4 Data and refinement statistics

Property	Value	Source
Space group	P 1	Depositor
Cell constants a, b, c, $\alpha$ , $\beta$ , $\gamma$	59.21Å 70.39Å 85.35Å 102.74° 95.87° 112.42°	Depositor
Resolution (Å)	81.46 – 1.97 81.45 – 1.97	Depositor EDS
% Data completeness (in resolution range)	91.0 (81.46-1.97) 91.0 (81.45-1.97)	Depositor EDS
$R_{merge}$	0.09	Depositor
$R_{sym}$	(Not available)	Depositor
$\langle I/\sigma(I) \rangle$ <sup>1</sup>	1.10 (at 1.97Å)	Xtrriage
Refinement program	REFMAC 5.8.0258	Depositor
R, $R_{free}$	0.222 , 0.273 0.235 , 0.283	Depositor DCC
$R_{free}$ test set	4001 reflections (5.14%)	wwPDB-VP
Wilson B-factor (Å <sup>2</sup> )	35.9	Xtrriage
Anisotropy	0.271	Xtrriage
Bulk solvent $k_{sol}$ (e/Å <sup>3</sup> ), $B_{sol}$ (Å <sup>2</sup> )	0.31 , 36.3	EDS
L-test for twinning <sup>2</sup>	$\langle  L  \rangle = 0.50$ , $\langle L^2 \rangle = 0.33$	Xtrriage
Estimated twinning fraction	No twinning to report.	Xtrriage
$F_o, F_c$ correlation	0.95	EDS
Total number of atoms	9418	wwPDB-VP
Average B, all atoms (Å <sup>2</sup> )	58.0	wwPDB-VP

Xtrriage's analysis on translational NCS is as follows: *The largest off-origin peak in the Patterson function is 5.81% of the height of the origin peak. No significant pseudotranslation is detected.*

<sup>1</sup>Intensities estimated from amplitudes.

<sup>2</sup>Theoretical values of  $\langle |L| \rangle$ ,  $\langle L^2 \rangle$  for acentric reflections are 0.5, 0.333 respectively for untwinned datasets, and 0.375, 0.2 for perfectly twinned datasets.

## 5 Model quality [i](#)

### 5.1 Standard geometry [i](#)

Bond lengths and bond angles in the following residue types are not validated in this section: PO4, VWM, ZN

The Z score for a bond length (or angle) is the number of standard deviations the observed value is removed from the expected value. A bond length (or angle) with  $|Z| > 5$  is considered an outlier worth inspection. RMSZ is the root-mean-square of all Z scores of the bond lengths (or angles).

Mol	Chain	Bond lengths		Bond angles	
		RMSZ	# Z  >5	RMSZ	# Z  >5
1	A	0.70	0/4517	0.79	0/6156
1	B	0.70	0/4610	0.82	0/6283
All	All	0.70	0/9127	0.81	0/12439

There are no bond length outliers.

There are no bond angle outliers.

There are no chirality outliers.

There are no planarity outliers.

### 5.2 Too-close contacts [i](#)

In the following table, the Non-H and H(model) columns list the number of non-hydrogen atoms and hydrogen atoms in the chain respectively. The H(added) column lists the number of hydrogen atoms added and optimized by MolProbity. The Clashes column lists the number of clashes within the asymmetric unit, whereas Symm-Clashes lists symmetry-related clashes.

Mol	Chain	Non-H	H(model)	H(added)	Clashes	Symm-Clashes
1	A	4417	0	4322	57	0
1	B	4508	0	4425	69	0
2	B	13	0	0	0	0
3	A	3	0	0	0	0
3	B	3	0	0	1	0
4	A	10	0	0	0	0
4	B	10	0	0	1	0
5	A	204	0	0	7	0
5	B	250	0	0	9	0
All	All	9418	0	8747	126	0

The all-atom clashscore is defined as the number of clashes found per 1000 atoms (including



hydrogen atoms). The all-atom clashscore for this structure is 7.

All (126) close contacts within the same asymmetric unit are listed below, sorted by their clash magnitude.

Atom-1	Atom-2	Interatomic distance (Å)	Clash overlap (Å)
1:B:5:CYS:HG	3:B:703:ZN:ZN	0.66	0.98
1:B:27:CYS:SG	5:B:855:HOH:O	2.33	0.84
1:B:510:VAL:HG21	1:B:541:TYR:CD1	2.16	0.80
1:B:12:THR:HG21	1:B:25:LEU:O	1.81	0.79
1:B:48:TYR:O	5:B:801:HOH:O	2.01	0.77
1:A:60:VAL:HB	5:A:928:HOH:O	1.89	0.71
1:B:48:TYR:OH	1:B:90:PHE:O	2.05	0.71
1:A:368:ALA:O	1:A:393:ALA:HA	1.92	0.69
1:A:519:ASN:HB3	1:A:530:THR:HG23	1.77	0.66
1:B:8:CYS:SG	1:B:99:GLY:N	2.67	0.66
1:A:13:SER:OG	1:A:44:SER:HB2	1.94	0.66
1:A:510:VAL:HG21	1:A:541:TYR:CD1	2.30	0.65
1:A:275:GLN:O	1:A:395:HIS:ND1	2.30	0.64
1:B:51:ASN:OD1	5:B:802:HOH:O	2.15	0.64
1:B:271:LYS:NZ	5:B:803:HOH:O	2.16	0.63
1:A:367:THR:HA	1:A:392:ARG:O	1.99	0.62
1:A:519:ASN:HB3	1:A:530:THR:CG2	2.31	0.61
1:B:7:LEU:HD12	1:B:103:VAL:HG22	1.81	0.61
1:A:21:ARG:NH1	5:A:809:HOH:O	2.34	0.60
1:B:275:GLN:NE2	1:B:435:ASP:OD2	2.30	0.59
1:B:508:LYS:HD3	5:B:992:HOH:O	2.01	0.59
1:B:445:PRO:HB3	1:B:468:SER:HB3	1.85	0.59
1:B:554:HIS:ND1	5:B:810:HOH:O	2.32	0.57
1:B:376:ILE:HG22	1:B:400:GLY:HA3	1.85	0.57
1:A:5:CYS:SG	1:A:26:CYS:HB3	2.45	0.57
1:A:269:TYR:OH	1:A:294:GLY:HA3	2.05	0.57
1:A:163:LEU:HD23	1:A:211:TYR:CD2	2.40	0.56
1:A:4:ALA:O	1:A:24:PHE:HB2	2.06	0.56
1:B:13:SER:O	1:B:44:SER:HA	2.05	0.56
1:B:510:VAL:HG21	1:B:541:TYR:CG	2.41	0.55
1:B:28:LYS:O	1:B:32:ASP:OD1	2.24	0.55
1:B:12:THR:CG2	1:B:26:CYS:HA	2.37	0.55
1:A:7:LEU:HD13	1:A:103:VAL:HG22	1.88	0.54
1:B:277:TYR:HA	1:B:396:TYR:O	2.08	0.54
1:A:152:ALA:HB2	1:A:167:TRP:CZ3	2.42	0.54
1:B:279:THR:HB	1:B:429:MET:CE	2.39	0.53
1:B:220:ASN:N	1:B:220:ASN:OD1	2.41	0.53
1:B:385:SER:OG	5:B:804:HOH:O	2.18	0.53

*Continued on next page...*

*Continued from previous page...*

Atom-1	Atom-2	Interatomic distance (Å)	Clash overlap (Å)
1:B:12:THR:HG21	1:B:26:CYS:HA	1.92	0.52
1:A:16:CYS:SG	1:A:18:ALA:HB3	2.50	0.52
1:A:7:LEU:HD21	1:A:106:PHE:HB2	1.92	0.52
1:B:7:LEU:CD1	1:B:103:VAL:HG22	2.41	0.51
1:A:31:TYR:CE2	1:A:87:GLY:HA2	2.46	0.51
1:B:252:LEU:HB3	1:B:299:TYR:CD1	2.46	0.50
1:A:277:TYR:HA	1:A:396:TYR:O	2.10	0.50
1:A:350:SER:O	1:A:352:LEU:N	2.44	0.50
1:A:304:ILE:HA	1:A:370:ILE:O	2.11	0.50
1:B:220:ASN:O	1:B:223:ASP:OD2	2.30	0.50
1:B:7:LEU:HD21	1:B:106:PHE:HB2	1.95	0.49
1:A:331:SER:HB2	1:A:353:GLU:HG3	1.94	0.49
1:B:32:ASP:O	1:B:36:SER:OG	2.24	0.49
1:B:333:ILE:HB	1:B:358:CYS:SG	2.52	0.49
1:B:477:LYS:NZ	1:B:551:GLU:OE2	2.37	0.48
1:A:296:ALA:O	1:A:300:PRO:HA	2.13	0.48
1:B:474[B]:MET:HG2	1:B:590:LEU:HB2	1.95	0.48
1:B:103:VAL:CG1	1:B:103:VAL:O	2.61	0.48
1:B:533:VAL:HG11	1:B:560:ARG:O	2.13	0.48
1:A:59:ASP:OD1	1:A:61:THR:OG1	2.23	0.48
1:B:279:THR:HB	1:B:429:MET:HE2	1.96	0.48
1:A:1:ALA:N	5:A:819:HOH:O	2.47	0.48
1:B:2:VAL:N	5:B:828:HOH:O	2.47	0.47
1:A:235:LEU:HD21	1:A:382:TYR:CE2	2.49	0.47
1:B:14:LEU:HB2	1:B:25:LEU:O	2.15	0.47
1:B:115:THR:HA	1:B:411:LEU:O	2.15	0.47
1:B:16:CYS:O	1:B:22:ARG:HA	2.15	0.47
1:B:8:CYS:SG	1:B:99:GLY:O	2.71	0.47
1:A:12:THR:HG21	1:A:25:LEU:O	2.16	0.46
1:A:512:ILE:O	1:A:546:PHE:HA	2.15	0.46
1:B:15:ARG:HG3	1:B:24:PHE:CD2	2.50	0.46
1:B:378:MET:O	1:B:407:ALA:HB2	2.15	0.46
1:A:4:ALA:O	1:A:24:PHE:CB	2.63	0.46
1:A:318:CYS:HB3	1:A:343:PHE:CD2	2.51	0.45
1:A:351:THR:HG23	1:A:364:PRO:HG3	1.98	0.45
1:A:376:ILE:HG12	1:A:425:VAL:HG11	1.97	0.45
1:A:64:TYR:O	1:A:70:TYR:HA	2.16	0.45
1:A:585:LEU:HD22	1:A:587:PHE:CE2	2.52	0.45
1:A:34:VAL:HA	1:A:39:HIS:O	2.17	0.45
1:A:512:ILE:HA	1:A:531:GLN:O	2.17	0.45
1:A:308:ALA:O	1:A:359:THR:HA	2.17	0.45

*Continued on next page...*

*Continued from previous page...*

Atom-1	Atom-2	Interatomic distance (Å)	Clash overlap (Å)
1:B:8:CYS:SG	1:B:99:GLY:CA	3.05	0.45
1:A:480:ILE:N	1:A:480:ILE:HD12	2.33	0.44
1:A:334:ILE:HD12	1:A:348:VAL:HG13	1.99	0.44
1:A:304:ILE:HG12	1:A:370:ILE:HB	1.98	0.44
1:B:184:GLY:C	1:B:195:ILE:HG22	2.38	0.44
1:B:245:HIS:HE1	5:B:930:HOH:O	2.00	0.44
1:B:284:PRO:HG2	1:B:566:THR:HG21	2.00	0.44
1:B:511:PHE:O	1:B:530:THR:HA	2.17	0.44
1:B:124:ASN:OD1	1:B:381:ASN:ND2	2.43	0.44
1:A:33:HIS:HA	1:A:107:ASN:OD1	2.18	0.44
1:B:14:LEU:O	1:B:24:PHE:HA	2.18	0.43
1:B:315:ASP:O	1:B:318:CYS:HB2	2.18	0.43
1:B:152:ALA:HB2	1:B:167:TRP:CZ3	2.52	0.43
1:A:591:GLU:O	1:A:592:ILE:HB	2.18	0.43
1:B:488:ILE:HD11	1:B:517:SER:HB3	2.00	0.43
1:A:490:ARG:HB2	1:A:491:PRO:HD3	2.00	0.43
1:B:254:PRO:HB3	1:B:298:TYR:CE2	2.54	0.43
1:B:282:GLY:O	1:B:288:LYS:HD3	2.19	0.43
1:B:59:ASP:OD1	1:B:59:ASP:C	2.57	0.43
1:B:372:VAL:CG1	1:B:399:ILE:HD12	2.49	0.43
1:B:152:ALA:HB2	1:B:167:TRP:CH2	2.55	0.42
1:B:386:VAL:O	1:B:390:ARG:HG2	2.18	0.42
1:B:377:SER:O	1:B:406:PRO:HA	2.19	0.42
1:A:72:CYS:SG	1:A:74:SER:HB2	2.60	0.42
1:B:5:CYS:O	1:B:9:ASN:N	2.45	0.42
1:B:452:VAL:CG1	1:B:565:ILE:HD11	2.50	0.42
1:B:544:VAL:O	1:B:572:ILE:HA	2.19	0.42
1:A:561:PHE:CD2	1:A:581:LEU:HD22	2.55	0.42
1:A:552:THR:C	5:A:892:HOH:O	2.58	0.42
1:B:31:TYR:HB2	1:B:89:VAL:HG23	2.02	0.41
1:A:280:LEU:HD11	1:A:438:LEU:HG	2.01	0.41
1:A:241:VAL:HG22	5:A:867:HOH:O	2.19	0.41
1:B:26:CYS:O	1:B:29:CYS:N	2.54	0.41
1:B:542:ASP:HA	1:B:569:LYS:HB2	2.02	0.41
1:A:152:ALA:HB2	1:A:167:TRP:CE3	2.56	0.41
1:A:584:LYS:NZ	5:A:818:HOH:O	2.44	0.41
1:A:585:LEU:HD22	1:A:587:PHE:CZ	2.55	0.41
1:B:404:GLN:NE2	4:B:706:PO4:O2	2.42	0.41
1:A:31:TYR:CD2	1:A:87:GLY:HA2	2.55	0.41
1:B:376:ILE:HD12	1:B:376:ILE:HA	1.96	0.41
1:B:504:PRO:HB3	1:B:507:ARG:NH2	2.36	0.41

*Continued on next page...*

Continued from previous page...

Atom-1	Atom-2	Interatomic distance (Å)	Clash overlap (Å)
1:A:276:LYS:O	1:A:395:HIS:HA	2.21	0.41
1:B:84:CYS:SG	1:B:84:CYS:O	2.79	0.41
1:A:44:SER:O	1:A:45:VAL:C	2.59	0.41
1:A:377:SER:O	1:A:406:PRO:HA	2.21	0.41
1:A:151:ILE:HG12	1:A:226:VAL:HG22	2.03	0.41
1:A:359:THR:OG1	5:A:801:HOH:O	2.22	0.40

There are no symmetry-related clashes.

## 5.3 Torsion angles [i](#)

### 5.3.1 Protein backbone [i](#)

In the following table, the Percentiles column shows the percent Ramachandran outliers of the chain as a percentile score with respect to all X-ray entries followed by that with respect to entries of similar resolution.

The Analysed column shows the number of residues for which the backbone conformation was analysed, and the total number of residues.

Mol	Chain	Analysed	Favoured	Allowed	Outliers	Percentiles	
1	A	564/601 (94%)	529 (94%)	27 (5%)	8 (1%)	11	3
1	B	580/601 (96%)	539 (93%)	36 (6%)	5 (1%)	17	8
All	All	1144/1202 (95%)	1068 (93%)	63 (6%)	13 (1%)	14	5

All (13) Ramachandran outliers are listed below:

Mol	Chain	Res	Type
1	A	351	THR
1	B	48	TYR
1	B	97	CYS
1	A	195	ILE
1	A	218	LYS
1	B	10	SER
1	A	283	PRO
1	A	484	VAL
1	B	9	ASN
1	A	249	ILE
1	A	45	VAL
1	B	195	ILE

Continued on next page...

*Continued from previous page...*

Mol	Chain	Res	Type
1	A	6	VAL

### 5.3.2 Protein sidechains [i](#)

In the following table, the Percentiles column shows the percent sidechain outliers of the chain as a percentile score with respect to all X-ray entries followed by that with respect to entries of similar resolution.

The Analysed column shows the number of residues for which the sidechain conformation was analysed, and the total number of residues.

Mol	Chain	Analysed	Rotameric	Outliers	Percentiles	
1	A	485/523 (93%)	472 (97%)	13 (3%)	44	35
1	B	498/523 (95%)	482 (97%)	16 (3%)	39	28
All	All	983/1046 (94%)	954 (97%)	29 (3%)	41	29

All (29) residues with a non-rotameric sidechain are listed below:

Mol	Chain	Res	Type
1	B	26	CYS
1	B	69	SER
1	B	96	THR
1	B	103	VAL
1	B	155	ARG
1	B	188	THR
1	B	191	SER
1	B	192	LYS
1	B	215	THR
1	B	220	ASN
1	B	229	SER
1	B	231	THR
1	B	259	SER
1	B	278	SER
1	B	373	PHE
1	B	458	ASP
1	A	12	THR
1	A	26	CYS
1	A	69	SER
1	A	76	LYS
1	A	156	GLU
1	A	183	THR

*Continued on next page...*

*Continued from previous page...*

Mol	Chain	Res	Type
1	A	255	THR
1	A	259	SER
1	A	373	PHE
1	A	502	ARG
1	A	530	THR
1	A	589	SER
1	A	591	GLU

Sometimes sidechains can be flipped to improve hydrogen bonding and reduce clashes. All (4) such sidechains are listed below:

Mol	Chain	Res	Type
1	B	51	ASN
1	B	268	ASN
1	B	470	GLN
1	A	179	ASN

### 5.3.3 RNA [i](#)

There are no RNA molecules in this entry.

### 5.4 Non-standard residues in protein, DNA, RNA chains [i](#)

There are no non-standard protein/DNA/RNA residues in this entry.

### 5.5 Carbohydrates [i](#)

There are no monosaccharides in this entry.

### 5.6 Ligand geometry [i](#)

Of 11 ligands modelled in this entry, 6 are monoatomic - leaving 5 for Mogul analysis.

In the following table, the Counts columns list the number of bonds (or angles) for which Mogul statistics could be retrieved, the number of bonds (or angles) that are observed in the model and the number of bonds (or angles) that are defined in the Chemical Component Dictionary. The Link column lists molecule types, if any, to which the group is linked. The Z score for a bond length (or angle) is the number of standard deviations the observed value is removed from the expected value. A bond length (or angle) with  $|Z| > 2$  is considered an outlier worth inspection. RMSZ is the root-mean-square of all Z scores of the bond lengths (or angles).

Mol	Type	Chain	Res	Link	Bond lengths			Bond angles		
					Counts	RMSZ	# Z  > 2	Counts	RMSZ	# Z  > 2
4	PO4	B	705	-	4,4,4	0.73	0	6,6,6	0.43	0
4	PO4	A	704	-	4,4,4	0.77	0	6,6,6	0.57	0
2	VWM	B	701	-	12,13,13	0.78	1 (8%)	14,19,19	1.17	2 (14%)
4	PO4	A	705	-	4,4,4	1.07	0	6,6,6	0.67	0
4	PO4	B	706	-	4,4,4	1.24	0	6,6,6	0.56	0

In the following table, the Chirals column lists the number of chiral outliers, the number of chiral centers analysed, the number of these observed in the model and the number defined in the Chemical Component Dictionary. Similar counts are reported in the Torsion and Rings columns. '-' means no outliers of that kind were identified.

Mol	Type	Chain	Res	Link	Chirals	Torsions	Rings
2	VWM	B	701	-	-	2/10/22/22	0/1/1/1

All (1) bond length outliers are listed below:

Mol	Chain	Res	Type	Atoms	Z	Observed(Å)	Ideal(Å)
2	B	701	VWM	O4-C8	-2.44	1.21	1.30

All (2) bond angle outliers are listed below:

Mol	Chain	Res	Type	Atoms	Z	Observed(°)	Ideal(°)
2	B	701	VWM	O4-C8-C6	2.56	117.50	113.05
2	B	701	VWM	C3-N1-C7	-2.08	110.90	114.27

There are no chirality outliers.

All (2) torsion outliers are listed below:

Mol	Chain	Res	Type	Atoms
2	B	701	VWM	C7-C6-C8-O3
2	B	701	VWM	C7-C6-C8-O4

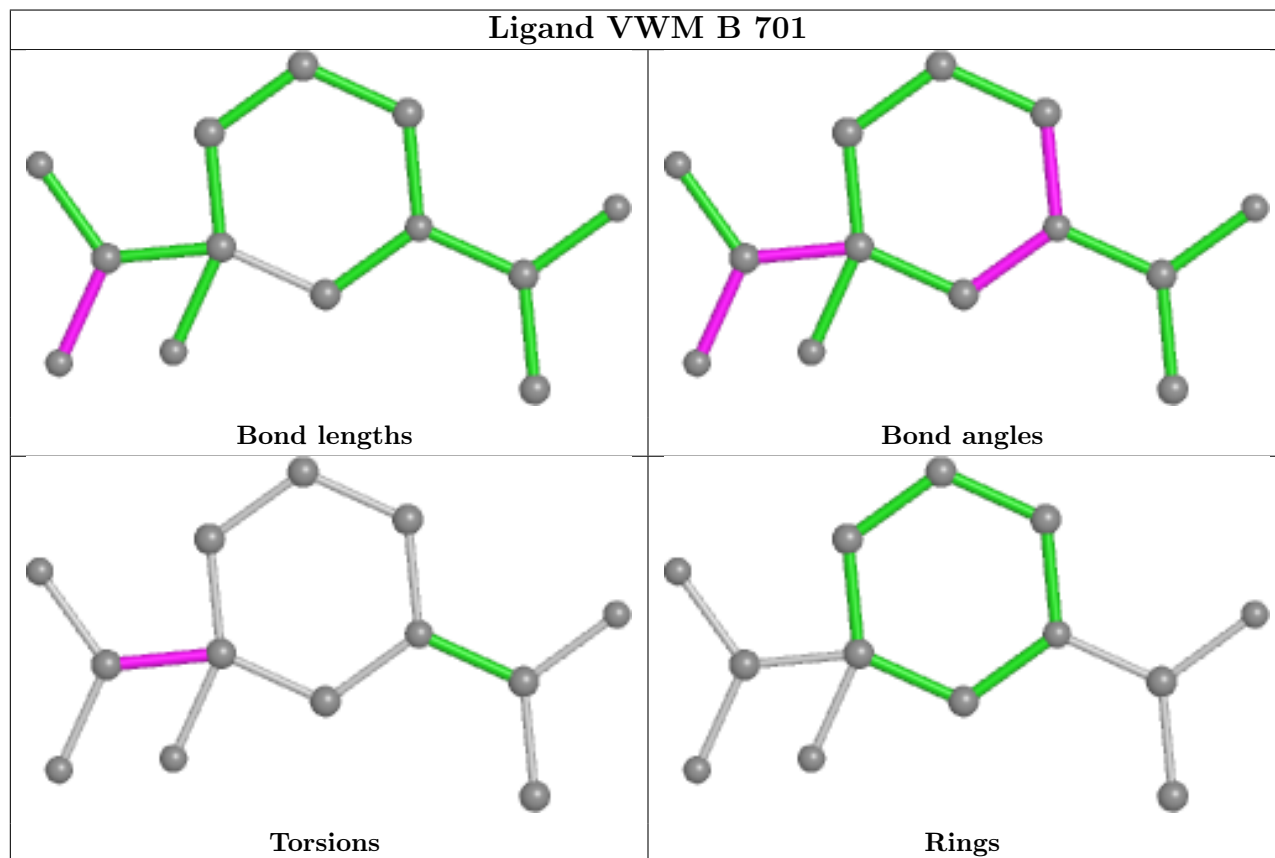
There are no ring outliers.

1 monomer is involved in 1 short contact:

Mol	Chain	Res	Type	Clashes	Symm-Clashes
4	B	706	PO4	1	0

The following is a two-dimensional graphical depiction of Mogul quality analysis of bond lengths, bond angles, torsion angles, and ring geometry for all instances of the Ligand of Interest. In

addition, ligands with molecular weight > 250 and outliers as shown on the validation Tables will also be included. For torsion angles, if less than 5% of the Mogul distribution of torsion angles is within 10 degrees of the torsion angle in question, then that torsion angle is considered an outlier. Any bond that is central to one or more torsion angles identified as an outlier by Mogul will be highlighted in the graph. For rings, the root-mean-square deviation (RMSD) between the ring in question and similar rings identified by Mogul is calculated over all ring torsion angles. If the average RMSD is greater than 60 degrees and the minimal RMSD between the ring in question and any Mogul-identified rings is also greater than 60 degrees, then that ring is considered an outlier. The outliers are highlighted in purple. The color gray indicates Mogul did not find sufficient equivalents in the CSD to analyse the geometry.



## 5.7 Other polymers [i](#)

There are no such residues in this entry.

## 5.8 Polymer linkage issues [i](#)

There are no chain breaks in this entry.



## 6 Fit of model and data [i](#)

### 6.1 Protein, DNA and RNA chains [i](#)

In the following table, the column labelled ‘#RSRZ > 2’ contains the number (and percentage) of RSRZ outliers, followed by percent RSRZ outliers for the chain as percentile scores relative to all X-ray entries and entries of similar resolution. The OWAB column contains the minimum, median, 95<sup>th</sup> percentile and maximum values of the occupancy-weighted average B-factor per residue. The column labelled ‘Q < 0.9’ lists the number of (and percentage) of residues with an average occupancy less than 0.9.

Mol	Chain	Analysed	<RSRZ>	#RSRZ>2	OWAB(Å <sup>2</sup> )	Q<0.9
1	A	572/601 (95%)	0.53	59 (10%) <b>6</b> <b>7</b>	27, 57, 123, 166	0
1	B	585/601 (97%)	0.19	21 (3%) 42 45	25, 46, 96, 132	1 (0%)
All	All	1157/1202 (96%)	0.36	80 (6%) <b>16</b> <b>18</b>	25, 51, 112, 166	1 (0%)

All (80) RSRZ outliers are listed below:

Mol	Chain	Res	Type	RSRZ
1	A	215	THR	9.7
1	A	152	ALA	8.8
1	A	167	TRP	8.3
1	A	170	GLY	8.2
1	A	169	VAL	6.8
1	A	176	LEU	6.3
1	B	217	TYR	6.0
1	A	149	TYR	5.6
1	A	219	LEU	5.5
1	A	207	ASP	5.3
1	A	229	SER	5.2
1	B	196	GLY	5.0
1	A	214	THR	5.0
1	A	178	ARG	4.9
1	A	202	LYS	4.8
1	A	154	VAL	4.7
1	A	225	PHE	4.7
1	B	45	VAL	4.5
1	A	485	SER	4.5
1	A	216	THR	4.4
1	B	193	VAL	4.3
1	B	214	THR	4.2
1	A	200	PHE	4.2
1	A	221	VAL	4.2

*Continued on next page...*

*Continued from previous page...*

Mol	Chain	Res	Type	RSRZ
1	A	179	ASN	4.1
1	A	153	THR	4.1
1	A	224	TYR	4.0
1	A	156	GLU	4.0
1	A	336	ALA	3.9
1	A	182	PHE	3.9
1	A	228	THR	3.9
1	B	474[A]	MET	3.8
1	B	179	ASN	3.8
1	A	195	ILE	3.6
1	B	227	LEU	3.6
1	A	81	PHE	3.5
1	A	217	TYR	3.5
1	B	163	LEU	3.5
1	A	155	ARG	3.4
1	A	7	LEU	3.4
1	A	210	VAL	3.4
1	A	256	LEU	3.4
1	A	222	GLY	3.2
1	B	340	VAL	3.1
1	A	352	LEU	3.0
1	B	81	PHE	2.9
1	B	2	VAL	2.8
1	A	227	LEU	2.7
1	B	68	MET	2.7
1	A	166	SER	2.7
1	A	247	VAL	2.7
1	A	146	LYS	2.7
1	A	208	ALA	2.6
1	A	165	LEU	2.6
1	A	253	TYR	2.6
1	B	175	PRO	2.6
1	A	27	CYS	2.5
1	B	44	SER	2.5
1	A	230	HIS	2.5
1	B	98	VAL	2.5
1	A	339	ARG	2.4
1	A	507	ARG	2.4
1	A	90	PHE	2.3
1	A	79	ILE	2.3
1	B	7	LEU	2.3
1	A	168	GLU	2.2

*Continued on next page...*

*Continued from previous page...*

Mol	Chain	Res	Type	RSRZ
1	A	226	VAL	2.2
1	B	55	CYS	2.2
1	A	157	VAL	2.2
1	A	147	LEU	2.2
1	A	11	GLN	2.2
1	B	215	THR	2.1
1	A	337	ARG	2.1
1	A	180	TYR	2.1
1	B	213	GLY	2.1
1	A	592	ILE	2.1
1	A	334	ILE	2.1
1	A	175	PRO	2.0
1	A	151	ILE	2.0
1	B	53	PRO	2.0

## 6.2 Non-standard residues in protein, DNA, RNA chains [i](#)

There are no non-standard protein/DNA/RNA residues in this entry.

## 6.3 Carbohydrates [i](#)

There are no monosaccharides in this entry.

## 6.4 Ligands [i](#)

In the following table, the Atoms column lists the number of modelled atoms in the group and the number defined in the chemical component dictionary. The B-factors column lists the minimum, median, 95<sup>th</sup> percentile and maximum values of B factors of atoms in the group. The column labelled 'Q<0.9' lists the number of atoms with occupancy less than 0.9.

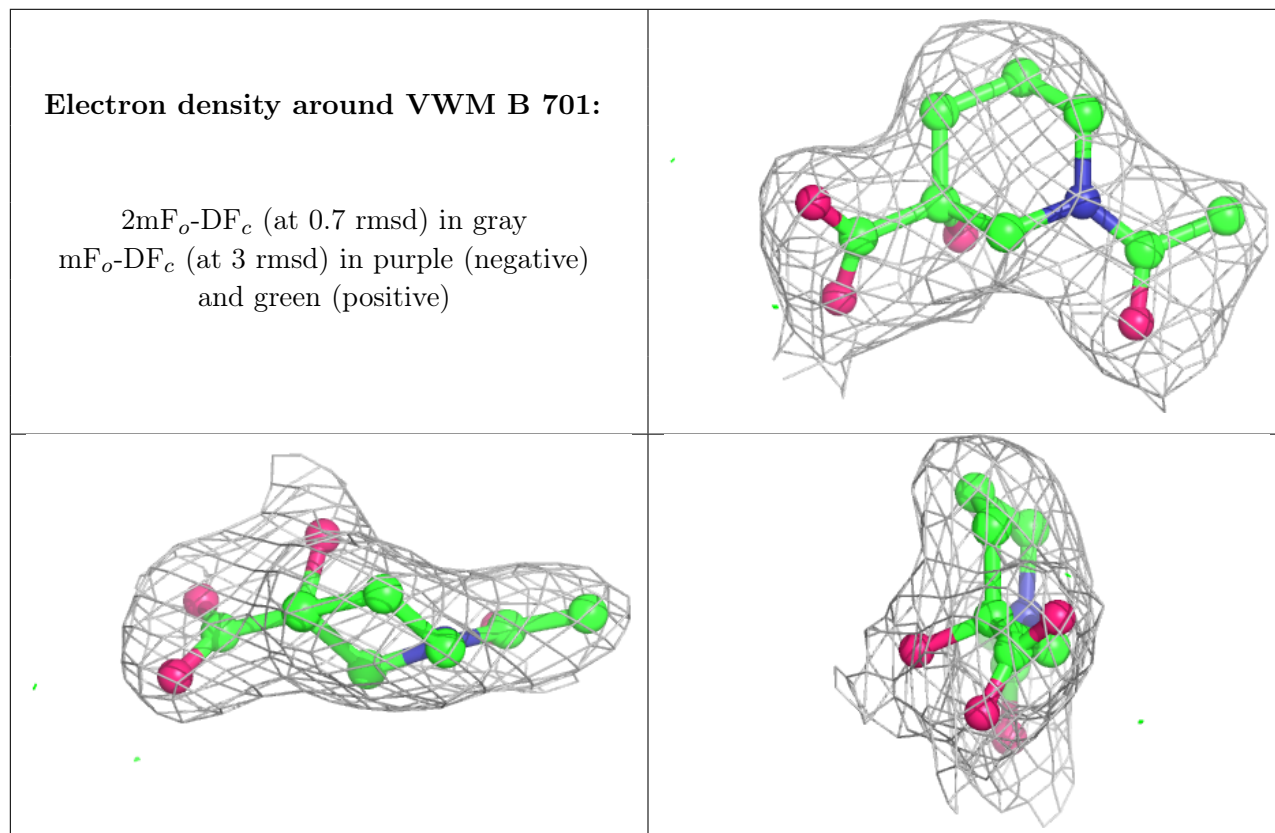
Mol	Type	Chain	Res	Atoms	RSCC	RSR	B-factors(Å <sup>2</sup> )	Q<0.9
3	ZN	A	703	1/1	0.90	0.08	89,89,89,89	0
3	ZN	B	703	1/1	0.91	0.09	72,72,72,72	0
2	VWM	B	701	13/13	0.94	0.09	39,49,52,53	0
3	ZN	A	702	1/1	0.96	0.10	56,56,56,56	0
3	ZN	B	704	1/1	0.97	0.11	74,74,74,74	0
4	PO4	B	706	5/5	0.97	0.12	38,40,42,49	0
4	PO4	A	705	5/5	0.97	0.11	37,41,42,46	0
3	ZN	A	701	1/1	0.98	0.10	61,61,61,61	0
4	PO4	A	704	5/5	0.98	0.11	34,37,38,43	0

*Continued on next page...*

*Continued from previous page...*

Mol	Type	Chain	Res	Atoms	RSCC	RSR	B-factors( $\text{\AA}^2$ )	Q<0.9
4	PO4	B	705	5/5	0.98	0.12	41,42,50,55	0
3	ZN	B	702	1/1	0.99	0.09	43,43,43,43	0

The following is a graphical depiction of the model fit to experimental electron density of all instances of the Ligand of Interest. In addition, ligands with molecular weight > 250 and outliers as shown on the geometry validation Tables will also be included. Each fit is shown from different orientation to approximate a three-dimensional view.



## 6.5 Other polymers [i](#)

There are no such residues in this entry.