



Full wwPDB X-ray Structure Validation Report ⓘ

May 16, 2020 – 06:09 pm BST

PDB ID : 5P2P
Title : X-RAY STRUCTURE OF PHOSPHOLIPASE A2 COMPLEXED WITH A
SUBSTRATE-DERIVED INHIBITOR
Authors : Dijkstra, B.W.; Thunnissen, M.M.G.M.; Kalk, K.H.; Drenth, J.
Deposited on : 1990-09-01
Resolution : 2.40 Å(reported)

This is a Full wwPDB X-ray Structure Validation Report for a publicly released PDB entry.

We welcome your comments at validation@mail.wwpdb.org

A user guide is available at

<https://www.wwpdb.org/validation/2017/XrayValidationReportHelp>

with specific help available everywhere you see the ⓘ symbol.

The following versions of software and data (see [references ⓘ](#)) were used in the production of this report:

MolProbity : 4.02b-467
Mogul : 1.8.5 (274361), CSD as541be (2020)
Xtrriage (Phenix) : **NOT EXECUTED**
EDS : **NOT EXECUTED**
buster-report : 1.1.7 (2018)
Percentile statistics : 20191225.v01 (using entries in the PDB archive December 25th 2019)
Ideal geometry (proteins) : Engh & Huber (2001)
Ideal geometry (DNA, RNA) : Parkinson et al. (1996)
Validation Pipeline (wwPDB-VP) : 2.11

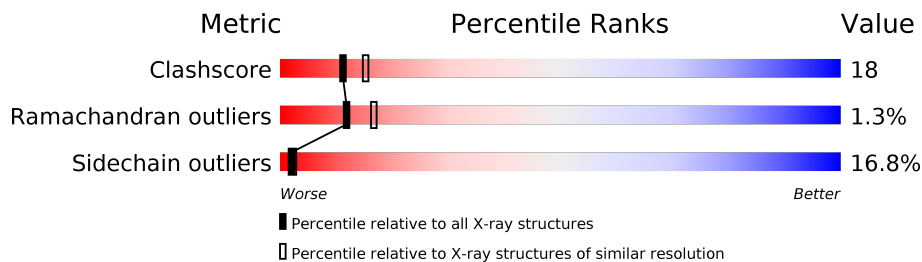
1 Overall quality at a glance

The following experimental techniques were used to determine the structure:

X-RAY DIFFRACTION

The reported resolution of this entry is 2.40 Å.

Percentile scores (ranging between 0-100) for global validation metrics of the entry are shown in the following graphic. The table shows the number of entries on which the scores are based.



Metric	Whole archive (#Entries)	Similar resolution (#Entries, resolution range(Å))
Clashscore	141614	4398 (2.40-2.40)
Ramachandran outliers	138981	4318 (2.40-2.40)
Sidechain outliers	138945	4319 (2.40-2.40)

The table below summarises the geometric issues observed across the polymeric chains and their fit to the electron density. The red, orange, yellow and green segments on the lower bar indicate the fraction of residues that contain outliers for ≥ 3 , 2, 1 and 0 types of geometric quality criteria respectively. A grey segment represents the fraction of residues that are not modelled. The numeric value for each fraction is indicated below the corresponding segment, with a dot representing fractions $\leq 5\%$.

Note EDS was not executed.

Mol	Chain	Length	Quality of chain
1	A	119	
1	B	119	

2 Entry composition [i](#)

There are 4 unique types of molecules in this entry. The entry contains 2047 atoms, of which 0 are hydrogens and 0 are deuteriums.

In the tables below, the ZeroOcc column contains the number of atoms modelled with zero occupancy, the AltConf column contains the number of residues with at least one atom in alternate conformation and the Trace column contains the number of residues modelled with at most 2 atoms.

- Molecule 1 is a protein called PHOSPHOLIPASE A2.

Mol	Chain	Residues	Atoms					ZeroOcc	AltConf	Trace
			Total	C	N	O	S			
1	A	119	931	572	159	184	16	0	0	0
1	B	119	931	572	159	184	16	0	0	0

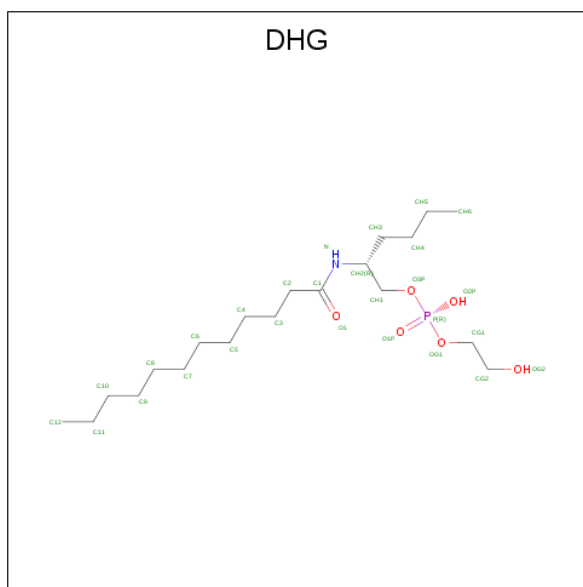
There are 20 discrepancies between the modelled and reference sequences:

Chain	Residue	Modelled	Actual	Comment	Reference
A	3	PHE	TRP	CONFLICT	UNP P00592
A	31	TRP	LEU	CONFLICT	UNP P00592
A	59	SER	ASP	CONFLICT	UNP P00592
A	60	GLY	SER	CONFLICT	UNP P00592
A	?	-	LYS	DELETION	UNP P00592
A	?	-	PHE	DELETION	UNP P00592
A	?	-	LEU	DELETION	UNP P00592
A	?	-	VAL	DELETION	UNP P00592
A	?	-	ASP	DELETION	UNP P00592
A	67	TYR	ASN	CONFLICT	UNP P00592
B	3	PHE	TRP	CONFLICT	UNP P00592
B	31	TRP	LEU	CONFLICT	UNP P00592
B	59	SER	ASP	CONFLICT	UNP P00592
B	60	GLY	SER	CONFLICT	UNP P00592
B	?	-	LYS	DELETION	UNP P00592
B	?	-	PHE	DELETION	UNP P00592
B	?	-	LEU	DELETION	UNP P00592
B	?	-	VAL	DELETION	UNP P00592
B	?	-	ASP	DELETION	UNP P00592
B	67	TYR	ASN	CONFLICT	UNP P00592

- Molecule 2 is CALCIUM ION (three-letter code: CA) (formula: Ca).

Mol	Chain	Residues	Atoms	ZeroOcc	AltConf
2	B	2	Total Ca 2 2	0	0
2	A	1	Total Ca 1 1	0	0

- Molecule 3 is PHOSPHONIC ACID 2-DODECANOYLAMINO-HEXYL ESTER PROPYL ESTER (three-letter code: DHG) (formula: C₂₀H₄₂NO₆P).



Mol	Chain	Residues	Atoms	ZeroOcc	AltConf
3	A	1	Total C N O P 28 20 1 6 1	0	0
3	B	1	Total C N O P 28 20 1 6 1	0	0

- Molecule 4 is water.

Mol	Chain	Residues	Atoms	ZeroOcc	AltConf
4	A	66	Total O 66 66	0	0
4	B	60	Total O 60 60	0	0

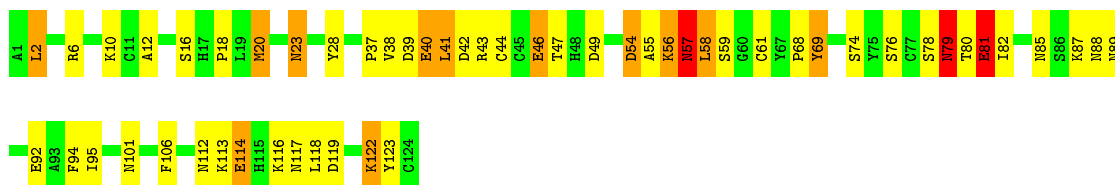
3 Residue-property plots [i](#)

These plots are drawn for all protein, RNA and DNA chains in the entry. The first graphic for a chain summarises the proportions of the various outlier classes displayed in the second graphic. The second graphic shows the sequence view annotated by issues in geometry. Residues are color-coded according to the number of geometric quality criteria for which they contain at least one outlier: green = 0, yellow = 1, orange = 2 and red = 3 or more. Stretches of 2 or more consecutive residues without any outlier are shown as a green connector. Residues present in the sample, but not in the model, are shown in grey.

Note EDS was not executed.

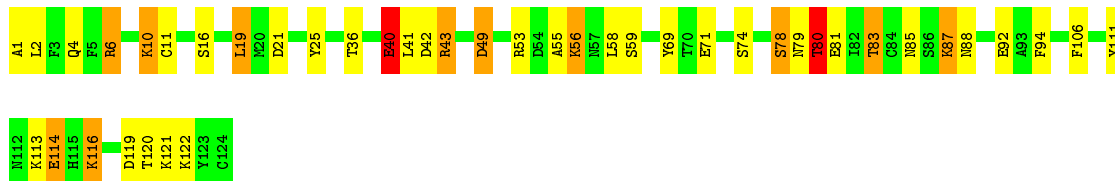
- Molecule 1: PHOSPHOLIPASE A2

Chain A: 



- Molecule 1: PHOSPHOLIPASE A2

Chain B: 



4 Data and refinement statistics

Xtrriage (Phenix) and EDS were not executed - this section is therefore incomplete.

Property	Value	Source
Space group	P 21 21 21	Depositor
Cell constants a, b, c, α , β , γ	52.57Å 62.44Å 85.58Å 90.00° 90.00° 90.00°	Depositor
Resolution (Å)	(Not available) – 2.40	Depositor
% Data completeness (in resolution range)	(Not available) ((Not available)-2.40)	Depositor
R_{merge}	(Not available)	Depositor
R_{sym}	(Not available)	Depositor
Refinement program	TNT	Depositor
R, R_{free}	0.189 , (Not available)	Depositor
Estimated twinning fraction	No twinning to report.	Xtrriage
Total number of atoms	2047	wwPDB-VP
Average B, all atoms (Å ²)	23.0	wwPDB-VP

5 Model quality i

5.1 Standard geometry i

Bond lengths and bond angles in the following residue types are not validated in this section: DHG, CA

The Z score for a bond length (or angle) is the number of standard deviations the observed value is removed from the expected value. A bond length (or angle) with $|Z| > 5$ is considered an outlier worth inspection. RMSZ is the root-mean-square of all Z scores of the bond lengths (or angles).

Mol	Chain	Bond lengths		Bond angles	
		RMSZ	# Z >5	RMSZ	# Z >5
1	A	0.88	4/954 (0.4%)	1.35	10/1287 (0.8%)
1	B	0.89	5/954 (0.5%)	1.39	12/1287 (0.9%)
All	All	0.88	9/1908 (0.5%)	1.37	22/2574 (0.9%)

Chiral center outliers are detected by calculating the chiral volume of a chiral center and verifying if the center is modelled as a planar moiety or with the opposite hand. A planarity outlier is detected by checking planarity of atoms in a peptide group, atoms in a mainchain group or atoms of a sidechain that are expected to be planar.

Mol	Chain	#Chirality outliers	#Planarity outliers
1	A	1	0

All (9) bond length outliers are listed below:

Mol	Chain	Res	Type	Atoms	Z	Observed(Å)	Ideal(Å)
1	A	40	GLU	CD-OE2	7.71	1.34	1.25
1	B	81	GLU	CD-OE2	7.68	1.34	1.25
1	B	40	GLU	CD-OE2	7.66	1.34	1.25
1	A	81	GLU	CD-OE2	6.90	1.33	1.25
1	B	71	GLU	CD-OE2	6.31	1.32	1.25
1	B	114	GLU	CD-OE2	5.94	1.32	1.25
1	A	46	GLU	CD-OE2	5.80	1.32	1.25
1	A	114	GLU	CD-OE2	5.66	1.31	1.25
1	B	92	GLU	CD-OE2	5.16	1.31	1.25

All (22) bond angle outliers are listed below:

Mol	Chain	Res	Type	Atoms	Z	Observed(°)	Ideal(°)
1	B	21	ASP	CB-CG-OD2	-7.57	111.49	118.30
1	A	39	ASP	CB-CG-OD2	-7.03	111.97	118.30

Continued on next page...

Continued from previous page...

Mol	Chain	Res	Type	Atoms	Z	Observed(°)	Ideal(°)
1	B	42	ASP	CB-CG-OD1	6.99	124.59	118.30
1	A	119	ASP	CB-CG-OD1	6.77	124.39	118.30
1	A	49	ASP	CB-CG-OD1	6.70	124.33	118.30
1	A	54	ASP	CB-CG-OD2	-6.67	112.29	118.30
1	A	39	ASP	CB-CG-OD1	6.37	124.03	118.30
1	B	49	ASP	CB-CG-OD1	6.29	123.96	118.30
1	B	42	ASP	CB-CG-OD2	-6.23	112.69	118.30
1	B	81	GLU	N-CA-CB	6.10	121.59	110.60
1	B	43	ARG	NE-CZ-NH1	6.07	123.33	120.30
1	B	21	ASP	CB-CG-OD1	5.66	123.39	118.30
1	A	69	TYR	CB-CG-CD1	5.60	124.36	121.00
1	A	42	ASP	CB-CG-OD2	-5.53	113.32	118.30
1	A	18	PRO	N-CA-CB	5.42	109.80	103.30
1	B	69	TYR	CB-CG-CD2	-5.26	117.84	121.00
1	B	59	SER	N-CA-CB	5.25	118.37	110.50
1	A	69	TYR	CB-CG-CD2	-5.17	117.90	121.00
1	B	119	ASP	CB-CG-OD2	-5.11	113.70	118.30
1	A	79	ASN	N-CA-C	5.05	124.65	111.00
1	B	59	SER	CB-CA-C	5.04	119.68	110.10
1	B	49	ASP	CB-CG-OD2	-5.02	113.78	118.30

All (1) chirality outliers are listed below:

Mol	Chain	Res	Type	Atom
1	A	79	ASN	CA

There are no planarity outliers.

5.2 Too-close contacts [\(i\)](#)

In the following table, the Non-H and H(model) columns list the number of non-hydrogen atoms and hydrogen atoms in the chain respectively. The H(added) column lists the number of hydrogen atoms added and optimized by MolProbity. The Clashes column lists the number of clashes within the asymmetric unit, whereas Symm-Clashes lists symmetry related clashes.

Mol	Chain	Non-H	H(model)	H(added)	Clashes	Symm-Clashes
1	A	931	0	840	37	0
1	B	931	0	840	27	0
2	A	1	0	0	0	0
2	B	2	0	0	0	0
3	A	28	0	41	2	0

Continued on next page...

Continued from previous page...

Mol	Chain	Non-H	H(model)	H(added)	Clashes	Symm-Clashes
3	B	28	0	41	5	0
4	A	66	0	0	5	0
4	B	60	0	0	3	0
All	All	2047	0	1762	66	0

The all-atom clashscore is defined as the number of clashes found per 1000 atoms (including hydrogen atoms). The all-atom clashscore for this structure is 18.

All (66) close contacts within the same asymmetric unit are listed below, sorted by their clash magnitude.

Atom-1	Atom-2	Interatomic distance (Å)	Clash overlap (Å)
1:B:74:SER:H	1:B:88:ASN:HD21	1.07	1.01
1:A:74:SER:H	1:A:88:ASN:HD21	1.18	0.90
1:B:55:ALA:HB2	1:B:94:PHE:HE1	1.45	0.82
1:B:19:LEU:HD23	1:B:19:LEU:H	1.45	0.80
1:B:55:ALA:HB2	1:B:94:PHE:CE1	2.17	0.79
1:A:68:PRO:HA	1:A:95:ILE:HD13	1.65	0.76
1:B:6:ARG:HD2	1:B:19:LEU:HD22	1.67	0.76
1:B:40:GLU:HG3	4:B:182:HOH:O	1.85	0.76
1:B:19:LEU:CD2	1:B:19:LEU:H	2.01	0.74
1:A:54:ASP:O	1:A:57:ASN:HB2	1.88	0.73
1:A:41:LEU:O	1:A:44:CYS:HB2	1.90	0.71
1:A:112:ASN:HB3	4:A:162:HOH:O	1.93	0.68
1:B:74:SER:H	1:B:88:ASN:ND2	1.88	0.64
1:A:122:LYS:HD3	1:A:123:TYR:CE2	2.35	0.62
1:A:37:PRO:HG2	1:A:43:ARG:HG2	1.83	0.60
1:A:114:GLU:HB2	4:A:162:HOH:O	2.03	0.58
1:A:23:ASN:O	1:A:116:LYS:NZ	2.29	0.58
1:B:106:PHE:HZ	3:B:127:DHG:H31	1.69	0.58
1:A:74:SER:H	1:A:88:ASN:ND2	1.96	0.57
1:B:79:ASN:O	1:B:80:THR:HG22	2.05	0.57
1:B:85:ASN:OD1	1:B:87:LYS:HB2	2.05	0.57
1:A:79:ASN:C	1:A:81:GLU:H	2.09	0.55
1:B:2:LEU:HD13	3:B:127:DHG:H121	1.89	0.54
1:A:56:LYS:HB2	4:A:185:HOH:O	2.08	0.54
1:A:79:ASN:O	1:A:80:THR:OG1	2.26	0.52
1:A:20:MET:HA	1:A:20:MET:HE3	1.93	0.51
1:A:2:LEU:HD22	1:A:69:TYR:HB3	1.90	0.51
1:A:55:ALA:O	1:A:57:ASN:N	2.42	0.51
1:A:55:ALA:HB2	1:A:94:PHE:CD1	2.48	0.49
1:A:68:PRO:HA	1:A:95:ILE:CD1	2.37	0.49

Continued on next page...

Continued from previous page...

Atom-1	Atom-2	Interatomic distance (Å)	Clash overlap (Å)
1:A:58:LEU:HB3	1:A:61:CYS:HB2	1.94	0.49
1:B:55:ALA:CB	1:B:94:PHE:CE1	2.94	0.49
1:A:38:VAL:HG11	1:A:118:LEU:CD2	2.43	0.48
1:B:19:LEU:N	1:B:19:LEU:HD23	2.18	0.47
1:A:12:ALA:HB2	1:A:82:ILE:HD11	1.97	0.47
1:B:111:TYR:OH	1:B:116:LYS:HG3	2.14	0.46
1:A:6:ARG:NH1	4:A:131:HOH:O	2.15	0.46
1:A:2:LEU:HA	1:A:2:LEU:HD12	1.74	0.46
1:B:49:ASP:O	3:B:127:DHG:HG22	2.15	0.46
1:A:89:ASN:OD1	1:A:92:GLU:HG3	2.16	0.45
1:B:78:SER:O	1:B:79:ASN:HB3	2.16	0.45
1:B:83:THR:HG22	1:B:83:THR:O	2.16	0.44
1:B:10:LYS:HE2	1:B:16:SER:O	2.17	0.44
1:B:1:ALA:O	1:B:4:GLN:HB2	2.17	0.44
1:A:101:ASN:HD22	1:A:101:ASN:HA	1.47	0.44
1:A:85:ASN:OD1	1:A:87:LYS:HB2	2.18	0.43
1:A:46:GLU:HG2	1:A:46:GLU:O	2.18	0.43
3:A:126:DHG:H111	3:A:126:DHG:H82	1.72	0.43
1:B:19:LEU:N	1:B:19:LEU:CD2	2.72	0.43
1:B:6:ARG:HB3	1:B:6:ARG:HE	1.40	0.43
1:A:47:THR:O	1:A:47:THR:HG22	2.19	0.43
1:B:56:LYS:HG3	4:B:179:HOH:O	2.19	0.42
1:A:43:ARG:NH2	4:A:136:HOH:O	2.22	0.42
1:A:116:LYS:HD3	1:A:117:ASN:N	2.34	0.42
1:B:49:ASP:OD1	3:B:127:DHG:HH12	2.19	0.42
1:A:38:VAL:HG11	1:A:118:LEU:HD22	2.02	0.41
1:A:88:ASN:HB3	1:A:92:GLU:HB2	2.01	0.41
1:B:83:THR:HG22	4:B:159:HOH:O	2.20	0.41
1:A:41:LEU:HD23	1:A:41:LEU:HA	1.79	0.41
1:B:85:ASN:OD1	1:B:87:LYS:N	2.48	0.41
1:A:10:LYS:HD3	1:A:16:SER:O	2.21	0.41
1:A:28:TYR:CG	1:A:46:GLU:HB2	2.56	0.41
1:B:25:TYR:C	1:B:25:TYR:CD1	2.94	0.41
1:A:106:PHE:HZ	3:A:126:DHG:H31	1.86	0.41
1:A:20:MET:HE2	1:A:20:MET:HB3	1.69	0.40
3:B:127:DHG:H91	3:B:127:DHG:H122	1.62	0.40

There are no symmetry-related clashes.

5.3 Torsion angles [i](#)

5.3.1 Protein backbone [i](#)

In the following table, the Percentiles column shows the percent Ramachandran outliers of the chain as a percentile score with respect to all X-ray entries followed by that with respect to entries of similar resolution.

The Analysed column shows the number of residues for which the backbone conformation was analysed, and the total number of residues.

Mol	Chain	Analysed	Favoured	Allowed	Outliers	Percentiles	
1	A	117/119 (98%)	109 (93%)	6 (5%)	2 (2%)	9	11
1	B	117/119 (98%)	110 (94%)	6 (5%)	1 (1%)	17	25
All	All	234/238 (98%)	219 (94%)	12 (5%)	3 (1%)	12	17

All (3) Ramachandran outliers are listed below:

Mol	Chain	Res	Type
1	A	79	ASN
1	B	80	THR
1	A	57	ASN

5.3.2 Protein sidechains [i](#)

In the following table, the Percentiles column shows the percent sidechain outliers of the chain as a percentile score with respect to all X-ray entries followed by that with respect to entries of similar resolution.

The Analysed column shows the number of residues for which the sidechain conformation was analysed, and the total number of residues.

Mol	Chain	Analysed	Rotameric	Outliers	Percentiles	
1	A	104/104 (100%)	90 (86%)	14 (14%)	4	4
1	B	104/104 (100%)	83 (80%)	21 (20%)	1	1
All	All	208/208 (100%)	173 (83%)	35 (17%)	2	2

All (35) residues with a non-rotameric sidechain are listed below:

Mol	Chain	Res	Type
1	A	2	LEU
1	A	20	MET
1	A	23	ASN

Continued on next page...

Continued from previous page...

Mol	Chain	Res	Type
1	A	40	GLU
1	A	41	LEU
1	A	56	LYS
1	A	57	ASN
1	A	58	LEU
1	A	59	SER
1	A	76	SER
1	A	78	SER
1	A	81	GLU
1	A	113	LYS
1	A	122	LYS
1	B	6	ARG
1	B	10	LYS
1	B	11	CYS
1	B	19	LEU
1	B	36	THR
1	B	40	GLU
1	B	41	LEU
1	B	43	ARG
1	B	53	ARG
1	B	56	LYS
1	B	58	LEU
1	B	78	SER
1	B	80	THR
1	B	83	THR
1	B	87	LYS
1	B	113	LYS
1	B	114	GLU
1	B	116	LYS
1	B	120	THR
1	B	121	LYS
1	B	122	LYS

Some sidechains can be flipped to improve hydrogen bonding and reduce clashes. All (9) such sidechains are listed below:

Mol	Chain	Res	Type
1	A	23	ASN
1	A	50	ASN
1	A	57	ASN
1	A	88	ASN
1	A	101	ASN
1	B	17	HIS

Continued on next page...

Continued from previous page...

Mol	Chain	Res	Type
1	B	50	ASN
1	B	88	ASN
1	B	112	ASN

5.3.3 RNA [i](#)

There are no RNA molecules in this entry.

5.4 Non-standard residues in protein, DNA, RNA chains [i](#)

There are no non-standard protein/DNA/RNA residues in this entry.

5.5 Carbohydrates [i](#)

There are no carbohydrates in this entry.

5.6 Ligand geometry [i](#)

Of 5 ligands modelled in this entry, 3 are monoatomic - leaving 2 for Mogul analysis.

In the following table, the Counts columns list the number of bonds (or angles) for which Mogul statistics could be retrieved, the number of bonds (or angles) that are observed in the model and the number of bonds (or angles) that are defined in the Chemical Component Dictionary. The Link column lists molecule types, if any, to which the group is linked. The Z score for a bond length (or angle) is the number of standard deviations the observed value is removed from the expected value. A bond length (or angle) with $|Z| > 2$ is considered an outlier worth inspection. RMSZ is the root-mean-square of all Z scores of the bond lengths (or angles).

Mol	Type	Chain	Res	Link	Bond lengths			Bond angles		
					Counts	RMSZ	# Z > 2	Counts	RMSZ	# Z > 2
3	DHG	A	126	2	27,27,27	1.51	5 (18%)	28,31,31	1.23	3 (10%)
3	DHG	B	127	2	27,27,27	1.65	5 (18%)	28,31,31	1.43	2 (7%)

In the following table, the Chirals column lists the number of chiral outliers, the number of chiral centers analysed, the number of these observed in the model and the number defined in the Chemical Component Dictionary. Similar counts are reported in the Torsion and Rings columns. '-' means no outliers of that kind were identified.

Mol	Type	Chain	Res	Link	Chirals	Torsions	Rings
3	DHG	A	126	2	-	9/30/30/30	-

Continued on next page...

Continued from previous page...

Mol	Type	Chain	Res	Link	Chirals	Torsions	Rings
3	DHG	B	127	2	-	7/30/30/30	-

All (10) bond length outliers are listed below:

Mol	Chain	Res	Type	Atoms	Z	Observed(Å)	Ideal(Å)
3	B	127	DHG	O1-C1	4.98	1.33	1.23
3	A	126	DHG	O3P-CH1	-3.41	1.31	1.44
3	A	126	DHG	CH1-CH2	3.37	1.58	1.51
3	A	126	DHG	C1-N	3.37	1.41	1.34
3	B	127	DHG	O3P-CH1	-3.20	1.32	1.44
3	B	127	DHG	C1-N	3.16	1.40	1.34
3	B	127	DHG	OG1-CG1	-2.77	1.33	1.44
3	A	126	DHG	C2-C1	2.52	1.56	1.51
3	B	127	DHG	C3-C2	2.46	1.61	1.52
3	A	126	DHG	O1-C1	2.31	1.28	1.23

All (5) bond angle outliers are listed below:

Mol	Chain	Res	Type	Atoms	Z	Observed(°)	Ideal(°)
3	B	127	DHG	CH2-N-C1	-5.68	114.54	122.92
3	B	127	DHG	CH4-CH3-CH2	3.62	120.55	111.96
3	A	126	DHG	CH3-CH2-N	-3.41	105.75	110.54
3	A	126	DHG	C2-C1-N	-2.68	111.18	115.83
3	A	126	DHG	O1-C1-C2	2.15	125.94	122.02

There are no chirality outliers.

All (16) torsion outliers are listed below:

Mol	Chain	Res	Type	Atoms
3	A	126	DHG	CH2-CH1-O3P-P
3	A	126	DHG	C5-C6-C7-C8
3	B	127	DHG	C11-C10-C9-C8
3	A	126	DHG	C3-C4-C5-C6
3	A	126	DHG	C6-C7-C8-C9
3	A	126	DHG	C2-C3-C4-C5
3	B	127	DHG	C9-C10-C11-C12
3	B	127	DHG	C5-C6-C7-C8
3	A	126	DHG	C9-C10-C11-C12
3	B	127	DHG	CH2-CH1-O3P-P
3	A	126	DHG	O3P-CH1-CH2-N
3	A	126	DHG	O3P-CH1-CH2-CH3

Continued on next page...

Continued from previous page...

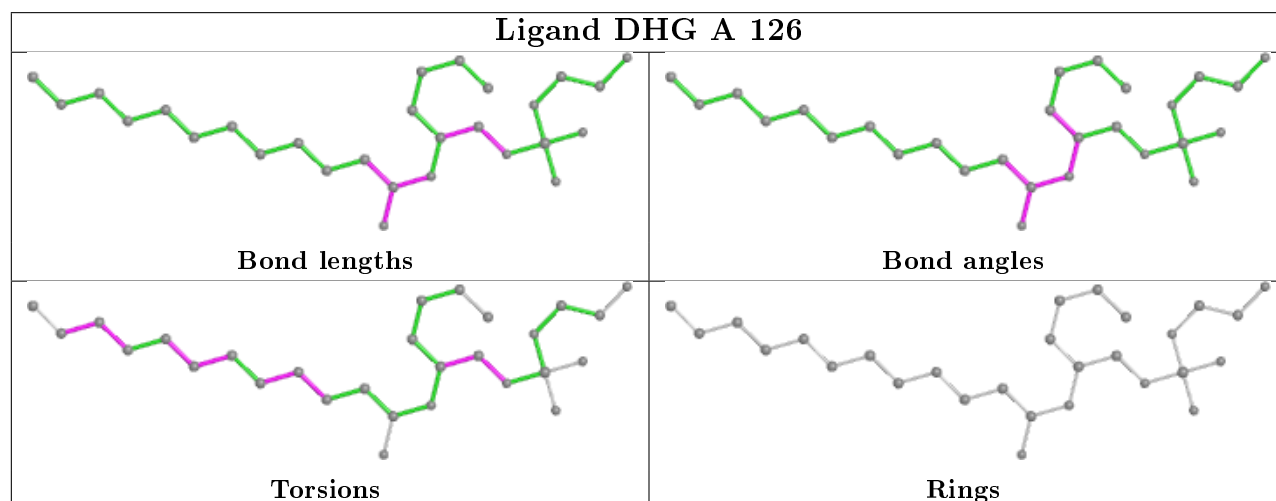
Mol	Chain	Res	Type	Atoms
3	B	127	DHG	C6-C7-C8-C9
3	B	127	DHG	C1-C2-C3-C4
3	A	126	DHG	C11-C10-C9-C8
3	B	127	DHG	C3-C4-C5-C6

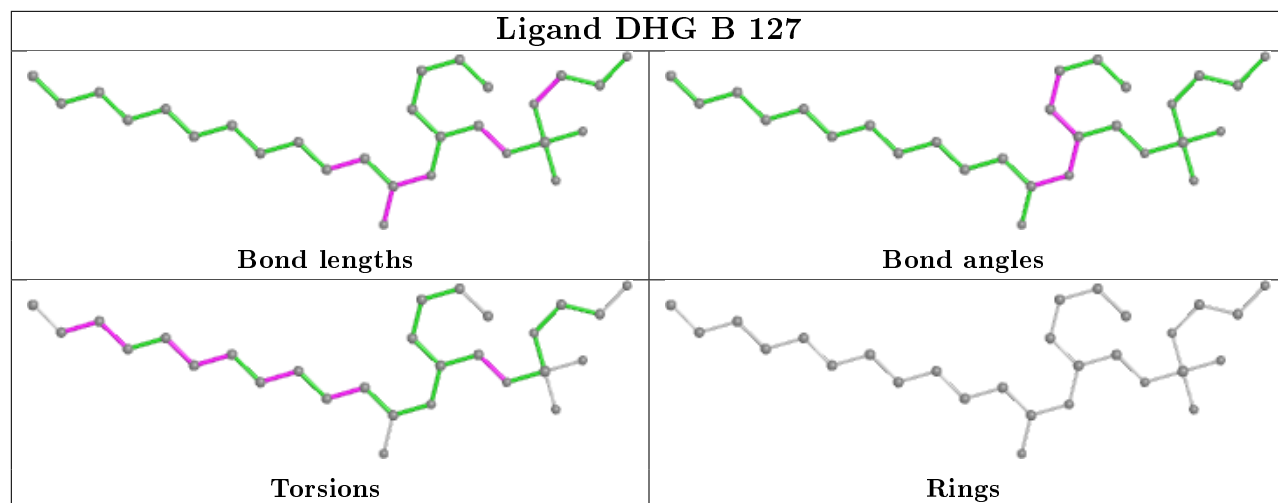
There are no ring outliers.

2 monomers are involved in 7 short contacts:

Mol	Chain	Res	Type	Clashes	Symm-Clashes
3	A	126	DHG	2	0
3	B	127	DHG	5	0

The following is a two-dimensional graphical depiction of Mogul quality analysis of bond lengths, bond angles, torsion angles, and ring geometry for all instances of the Ligand of Interest. In addition, ligands with molecular weight > 250 and outliers as shown on the validation Tables will also be included. For torsion angles, if less than 5% of the Mogul distribution of torsion angles is within 10 degrees of the torsion angle in question, then that torsion angle is considered an outlier. Any bond that is central to one or more torsion angles identified as an outlier by Mogul will be highlighted in the graph. For rings, the root-mean-square deviation (RMSD) between the ring in question and similar rings identified by Mogul is calculated over all ring torsion angles. If the average RMSD is greater than 60 degrees and the minimal RMSD between the ring in question and any Mogul-identified rings is also greater than 60 degrees, then that ring is considered an outlier. The outliers are highlighted in purple. The color gray indicates Mogul did not find sufficient equivalents in the CSD to analyse the geometry.





5.7 Other polymers [i](#)

There are no such residues in this entry.

5.8 Polymer linkage issues [i](#)

There are no chain breaks in this entry.

6 Fit of model and data

6.1 Protein, DNA and RNA chains

EDS was not executed - this section is therefore empty.

6.2 Non-standard residues in protein, DNA, RNA chains

EDS was not executed - this section is therefore empty.

6.3 Carbohydrates

EDS was not executed - this section is therefore empty.

6.4 Ligands

EDS was not executed - this section is therefore empty.

6.5 Other polymers

EDS was not executed - this section is therefore empty.