



Full wwPDB X-ray Structure Validation Report ⓘ

Jan 7, 2024 – 01:25 am GMT

PDB ID : 5M2Z
Title : Crystal structure of the full-length Zika virus NS5 protein (Human isolate Z1106033)
Authors : Ferrero, D.S.; Ruiz-Arroyo, V.M.; Soler, N.; Uson, I.; Verdaguer, N.
Deposited on : 2016-10-13
Resolution : 4.80 Å(reported)

This is a Full wwPDB X-ray Structure Validation Report for a publicly released PDB entry.

We welcome your comments at validation@mail.wwpdb.org

A user guide is available at

<https://www.wwpdb.org/validation/2017/XrayValidationReportHelp>

with specific help available everywhere you see the ⓘ symbol.

The types of validation reports are described at

<http://www.wwpdb.org/validation/2017/FAQs#types>.

The following versions of software and data (see [references ⓘ](#)) were used in the production of this report:

MolProbity : 4.02b-467
Mogul : 1.8.4, CSD as541be (2020)
Xtriage (Phenix) : 1.13
EDS : 2.36
buster-report : 1.1.7 (2018)
Percentile statistics : 20191225.v01 (using entries in the PDB archive December 25th 2019)
Refmac : 5.8.0158
CCP4 : 7.0.044 (Gargrove)
Ideal geometry (proteins) : Engh & Huber (2001)
Ideal geometry (DNA, RNA) : Parkinson et al. (1996)
Validation Pipeline (wwPDB-VP) : 2.36

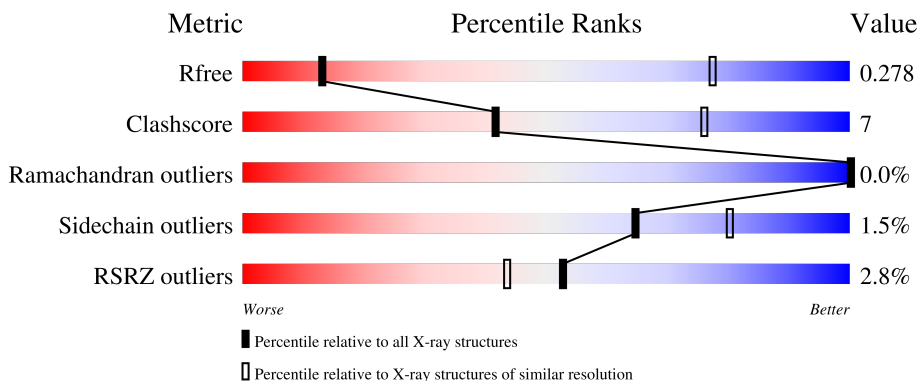
1 Overall quality at a glance

The following experimental techniques were used to determine the structure:

X-RAY DIFFRACTION

The reported resolution of this entry is 4.80 Å.

Percentile scores (ranging between 0-100) for global validation metrics of the entry are shown in the following graphic. The table shows the number of entries on which the scores are based.




Metric	Whole archive (#Entries)	Similar resolution (#Entries, resolution range(Å))
R_{free}	130704	1096 (5.80-3.80)
Clashscore	141614	1170 (5.80-3.80)
Ramachandran outliers	138981	1105 (5.80-3.80)
Sidechain outliers	138945	1085 (5.80-3.80)
RSRZ outliers	127900	1126 (5.90-3.70)

The table below summarises the geometric issues observed across the polymeric chains and their fit to the electron density. The red, orange, yellow and green segments of the lower bar indicate the fraction of residues that contain outliers for ≥ 3 , 2, 1 and 0 types of geometric quality criteria respectively. A grey segment represents the fraction of residues that are not modelled. The numeric value for each fraction is indicated below the corresponding segment, with a dot representing fractions $\leq 5\%$. The upper red bar (where present) indicates the fraction of residues that have poor fit to the electron density. The numeric value is given above the bar.

Mol	Chain	Length	Quality of chain
1	A	914	 3% 84% 13%
1	B	914	 4% 84% 13%
1	C	914	 4% 84% 13%
1	D	914	 3% 84% 12%
1	E	914	 % 84% 12%

Continued on next page...

Continued from previous page...

Mol	Chain	Length	Quality of chain
1	F	914	 84% 13%

The following table lists non-polymeric compounds, carbohydrate monomers and non-standard residues in protein, DNA, RNA chains that are outliers for geometric or electron-density-fit criteria:

Mol	Type	Chain	Res	Chirality	Geometry	Clashes	Electron density
2	PO4	A	1001	-	-	-	X
2	PO4	A	1002	-	-	X	X
2	PO4	A	1003	-	-	-	X
2	PO4	B	1001	-	-	-	X
2	PO4	C	1002	-	-	X	-
2	PO4	D	1001	-	-	-	X
2	PO4	D	1002	-	-	X	X
2	PO4	E	1003	-	-	-	X
2	PO4	E	1004	-	-	-	X
2	PO4	F	1001	-	-	-	X
2	PO4	F	1003	-	-	-	X
4	SAH	C	1003	-	-	-	X
4	SAH	F	1004	-	-	-	X

2 Entry composition [i](#)

There are 4 unique types of molecules in this entry. The entry contains 42756 atoms, of which 0 are hydrogens and 0 are deuteriums.

In the tables below, the ZeroOcc column contains the number of atoms modelled with zero occupancy, the AltConf column contains the number of residues with at least one atom in alternate conformation and the Trace column contains the number of residues modelled with at most 2 atoms.

- Molecule 1 is a protein called NS5.

Mol	Chain	Residues	Atoms					ZeroOcc	AltConf	Trace
			Total	C	N	O	S			
1	A	883	7097	4463	1286	1302	46	0	0	0
1	C	883	7097	4463	1286	1302	46	0	0	0
1	B	883	7097	4463	1286	1302	46	0	0	0
1	D	883	7097	4463	1286	1302	46	0	0	0
1	E	883	7097	4463	1286	1302	46	0	0	0
1	F	883	7097	4463	1286	1302	46	0	0	0

There are 66 discrepancies between the modelled and reference sequences:

Chain	Residue	Modelled	Actual	Comment	Reference
A	0	MET	-	initiating methionine	UNP A0A172HA24
A	904	GLY	-	expression tag	UNP A0A172HA24
A	905	SER	-	expression tag	UNP A0A172HA24
A	906	SER	-	expression tag	UNP A0A172HA24
A	907	SER	-	expression tag	UNP A0A172HA24
A	908	HIS	-	expression tag	UNP A0A172HA24
A	909	HIS	-	expression tag	UNP A0A172HA24
A	910	HIS	-	expression tag	UNP A0A172HA24
A	911	HIS	-	expression tag	UNP A0A172HA24
A	912	HIS	-	expression tag	UNP A0A172HA24
A	913	HIS	-	expression tag	UNP A0A172HA24
C	0	MET	-	initiating methionine	UNP A0A172HA24
C	904	GLY	-	expression tag	UNP A0A172HA24
C	905	SER	-	expression tag	UNP A0A172HA24
C	906	SER	-	expression tag	UNP A0A172HA24
C	907	SER	-	expression tag	UNP A0A172HA24
C	908	HIS	-	expression tag	UNP A0A172HA24

Continued on next page...

Continued from previous page...

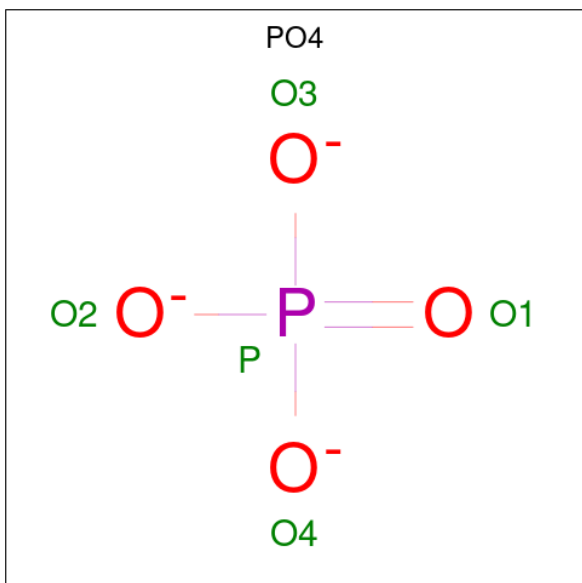
Chain	Residue	Modelled	Actual	Comment	Reference
C	909	HIS	-	expression tag	UNP A0A172HA24
C	910	HIS	-	expression tag	UNP A0A172HA24
C	911	HIS	-	expression tag	UNP A0A172HA24
C	912	HIS	-	expression tag	UNP A0A172HA24
C	913	HIS	-	expression tag	UNP A0A172HA24
B	0	MET	-	initiating methionine	UNP A0A172HA24
B	904	GLY	-	expression tag	UNP A0A172HA24
B	905	SER	-	expression tag	UNP A0A172HA24
B	906	SER	-	expression tag	UNP A0A172HA24
B	907	SER	-	expression tag	UNP A0A172HA24
B	908	HIS	-	expression tag	UNP A0A172HA24
B	909	HIS	-	expression tag	UNP A0A172HA24
B	910	HIS	-	expression tag	UNP A0A172HA24
B	911	HIS	-	expression tag	UNP A0A172HA24
B	912	HIS	-	expression tag	UNP A0A172HA24
B	913	HIS	-	expression tag	UNP A0A172HA24
D	0	MET	-	initiating methionine	UNP A0A172HA24
D	904	GLY	-	expression tag	UNP A0A172HA24
D	905	SER	-	expression tag	UNP A0A172HA24
D	906	SER	-	expression tag	UNP A0A172HA24
D	907	SER	-	expression tag	UNP A0A172HA24
D	908	HIS	-	expression tag	UNP A0A172HA24
D	909	HIS	-	expression tag	UNP A0A172HA24
D	910	HIS	-	expression tag	UNP A0A172HA24
D	911	HIS	-	expression tag	UNP A0A172HA24
D	912	HIS	-	expression tag	UNP A0A172HA24
D	913	HIS	-	expression tag	UNP A0A172HA24
E	0	MET	-	initiating methionine	UNP A0A172HA24
E	904	GLY	-	expression tag	UNP A0A172HA24
E	905	SER	-	expression tag	UNP A0A172HA24
E	906	SER	-	expression tag	UNP A0A172HA24
E	907	SER	-	expression tag	UNP A0A172HA24
E	908	HIS	-	expression tag	UNP A0A172HA24
E	909	HIS	-	expression tag	UNP A0A172HA24
E	910	HIS	-	expression tag	UNP A0A172HA24
E	911	HIS	-	expression tag	UNP A0A172HA24
E	912	HIS	-	expression tag	UNP A0A172HA24
E	913	HIS	-	expression tag	UNP A0A172HA24
F	0	MET	-	initiating methionine	UNP A0A172HA24
F	904	GLY	-	expression tag	UNP A0A172HA24
F	905	SER	-	expression tag	UNP A0A172HA24
F	906	SER	-	expression tag	UNP A0A172HA24

Continued on next page...

Continued from previous page...

Chain	Residue	Modelled	Actual	Comment	Reference
F	907	SER	-	expression tag	UNP A0A172HA24
F	908	HIS	-	expression tag	UNP A0A172HA24
F	909	HIS	-	expression tag	UNP A0A172HA24
F	910	HIS	-	expression tag	UNP A0A172HA24
F	911	HIS	-	expression tag	UNP A0A172HA24
F	912	HIS	-	expression tag	UNP A0A172HA24
F	913	HIS	-	expression tag	UNP A0A172HA24

- Molecule 2 is PHOSPHATE ION (three-letter code: PO4) (formula: O₄P).



Mol	Chain	Residues	Atoms	ZeroOcc	AltConf
2	A	1	Total O P 5 4 1	0	0
2	A	1	Total O P 5 4 1	0	0
2	A	1	Total O P 5 4 1	0	0
2	C	1	Total O P 5 4 1	0	0
2	C	1	Total O P 5 4 1	0	0
2	B	1	Total O P 5 4 1	0	0
2	B	1	Total O P 5 4 1	0	0
2	B	1	Total O P 5 4 1	0	0

Continued on next page...

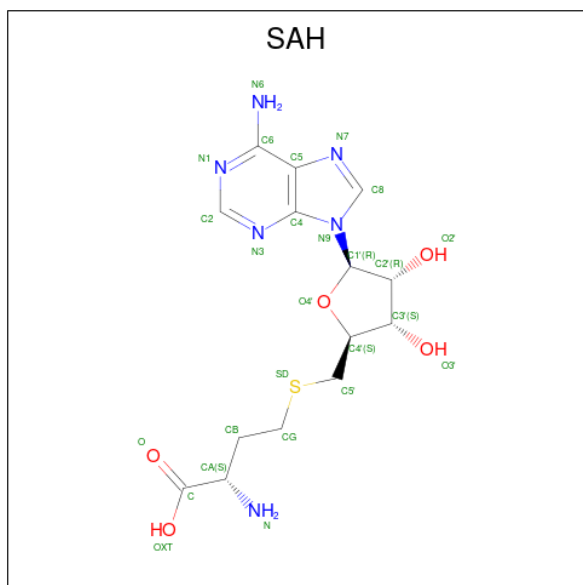
Continued from previous page...

Mol	Chain	Residues	Atoms			ZeroOcc	AltConf
2	D	1	Total	O	P	0	0
			5	4	1		
2	D	1	Total	O	P	0	0
			5	4	1		
2	E	1	Total	O	P	0	0
			5	4	1		
2	E	1	Total	O	P	0	0
			5	4	1		
2	E	1	Total	O	P	0	0
			5	4	1		
2	E	1	Total	O	P	0	0
			5	4	1		
2	F	1	Total	O	P	0	0
			5	4	1		
2	F	1	Total	O	P	0	0
			5	4	1		
2	F	1	Total	O	P	0	0
			5	4	1		

- Molecule 3 is ZINC ION (three-letter code: ZN) (formula: Zn).

Mol	Chain	Residues	Atoms		ZeroOcc	AltConf
3	A	2	Total	Zn	0	0
			2	2		
3	C	1	Total	Zn	0	0
			1	1		
3	B	2	Total	Zn	0	0
			2	2		
3	D	2	Total	Zn	0	0
			2	2		
3	E	2	Total	Zn	0	0
			2	2		
3	F	2	Total	Zn	0	0
			2	2		

- Molecule 4 is S-ADENOSYL-L-HOMOCYSTEINE (three-letter code: SAH) (formula: C₁₄H₂₀N₆O₅S).

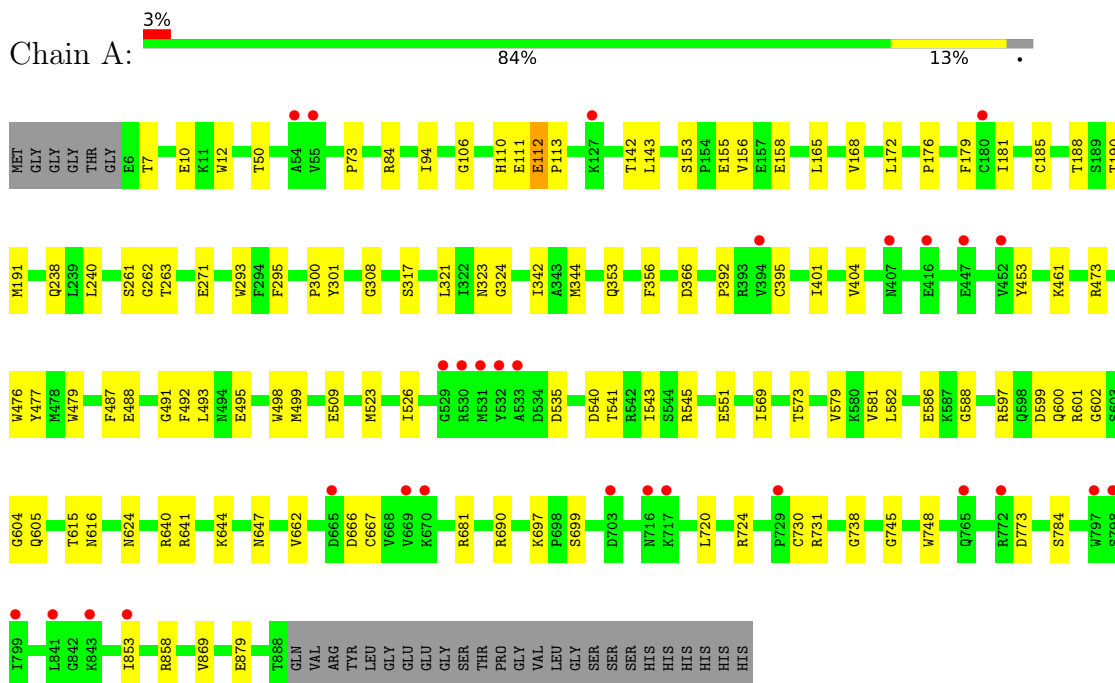


Mol	Chain	Residues	Atoms					ZeroOcc	AltConf
			Total	C	N	O	S		
4	C	1	Total	14	6	5	1	0	0
4	E	1	Total	14	6	5	1	0	0
4	F	1	Total	14	6	5	1	0	0

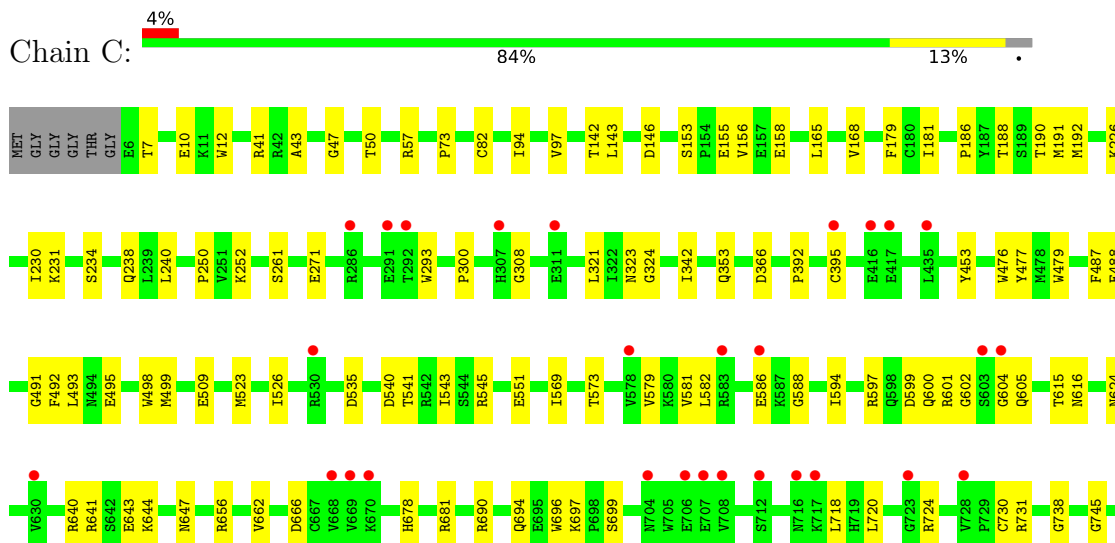
3 Residue-property plots [i](#)

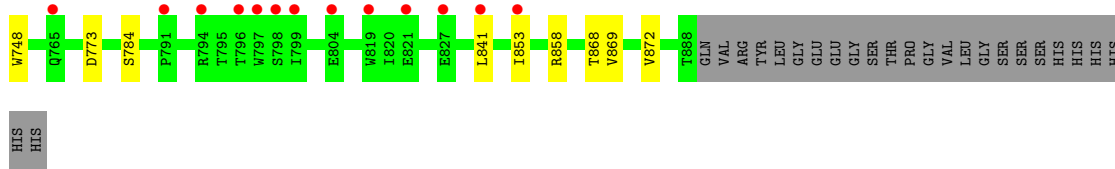
These plots are drawn for all protein, RNA, DNA and oligosaccharide chains in the entry. The first graphic for a chain summarises the proportions of the various outlier classes displayed in the second graphic. The second graphic shows the sequence view annotated by issues in geometry and electron density. Residues are color-coded according to the number of geometric quality criteria for which they contain at least one outlier: green = 0, yellow = 1, orange = 2 and red = 3 or more. A red dot above a residue indicates a poor fit to the electron density ($RSRZ > 2$). Stretches of 2 or more consecutive residues without any outlier are shown as a green connector. Residues present in the sample, but not in the model, are shown in grey.

- Molecule 1: NS5

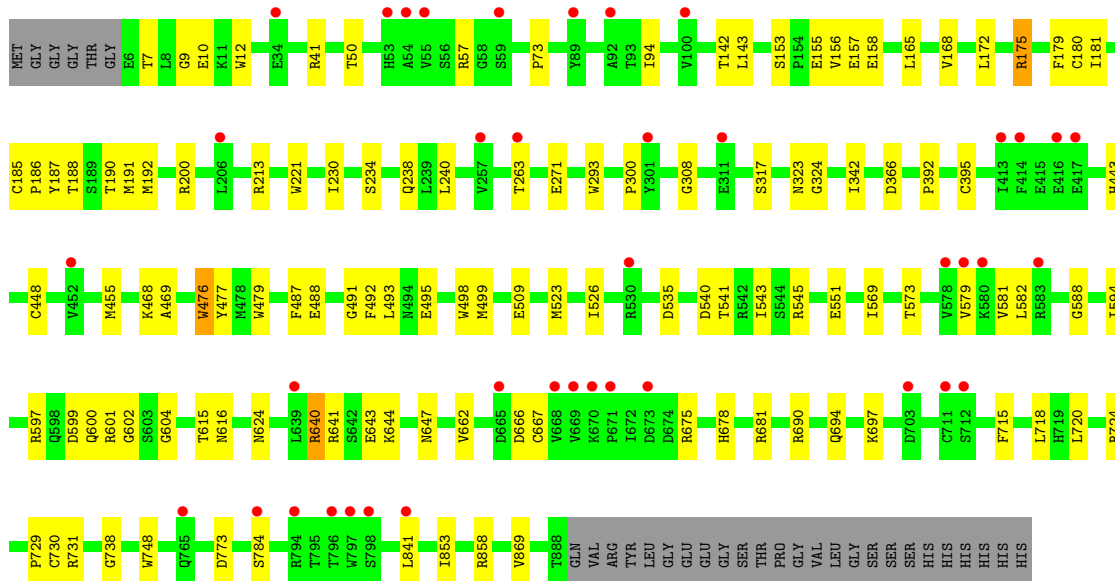
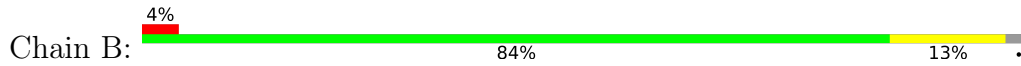


- Molecule 1: NS5

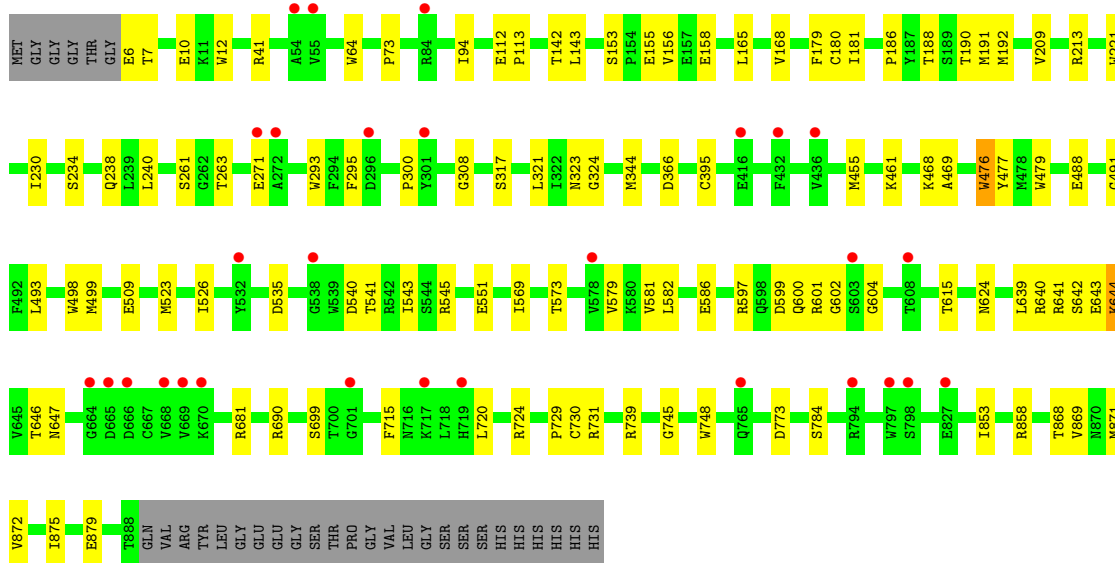
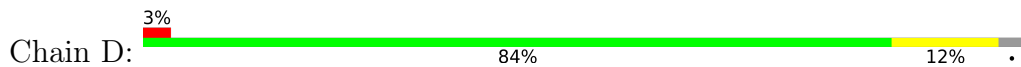




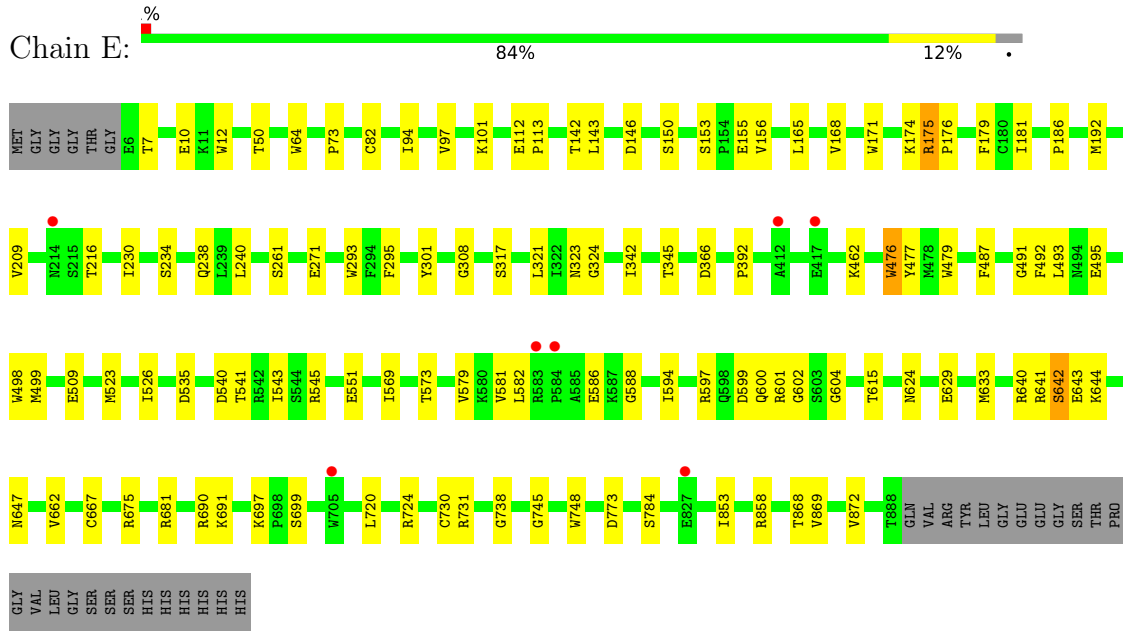
● Molecule 1: NS5



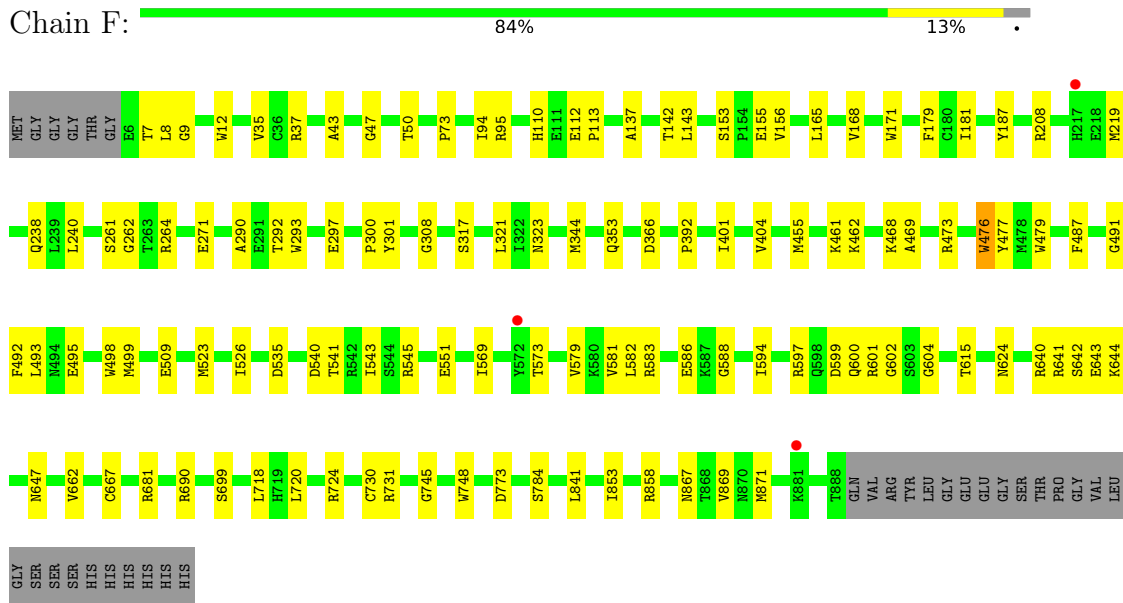
● Molecule 1: NS5



● Molecule 1: NS5



● Molecule 1: NS5



4 Data and refinement statistics i

Property	Value	Source
Space group	P 65	Depositor
Cell constants a, b, c, α , β , γ	234.58Å 234.58Å 406.12Å 90.00° 90.00° 120.00°	Depositor
Resolution (Å)	44.32 – 4.80 44.32 – 4.80	Depositor EDS
% Data completeness (in resolution range)	99.4 (44.32-4.80) 99.8 (44.32-4.80)	Depositor EDS
R_{merge}	0.16	Depositor
R_{sym}	(Not available)	Depositor
$\langle I/\sigma(I) \rangle$ ¹	1.81 (at 4.85Å)	Xtrriage
Refinement program	PHENIX (1.11_2567: ???)	Depositor
R, R_{free}	0.241 , 0.266 0.254 , 0.278	Depositor DCC
R_{free} test set	3129 reflections (5.10%)	wwPDB-VP
Wilson B-factor (Å ²)	188.0	Xtrriage
Anisotropy	0.402	Xtrriage
Bulk solvent k_{sol} (e/Å ³), B_{sol} (Å ²)	0.28 , 222.2	EDS
L-test for twinning ²	$\langle L \rangle = 0.41$, $\langle L^2 \rangle = 0.23$	Xtrriage
Estimated twinning fraction	0.087 for h,-h-k,-l	Xtrriage
F_o, F_c correlation	0.89	EDS
Total number of atoms	42756	wwPDB-VP
Average B, all atoms (Å ²)	273.0	wwPDB-VP

Xtrriage's analysis on translational NCS is as follows: *The largest off-origin peak in the Patterson function is 10.35% of the height of the origin peak. No significant pseudotranslation is detected.*

¹Intensities estimated from amplitudes.

²Theoretical values of $\langle |L| \rangle$, $\langle L^2 \rangle$ for acentric reflections are 0.5, 0.333 respectively for untwinned datasets, and 0.375, 0.2 for perfectly twinned datasets.

5 Model quality [i](#)

5.1 Standard geometry [i](#)

Bond lengths and bond angles in the following residue types are not validated in this section: SAH, PO4, ZN

The Z score for a bond length (or angle) is the number of standard deviations the observed value is removed from the expected value. A bond length (or angle) with $|Z| > 5$ is considered an outlier worth inspection. RMSZ is the root-mean-square of all Z scores of the bond lengths (or angles).

Mol	Chain	Bond lengths		Bond angles	
		RMSZ	# Z >5	RMSZ	# Z >5
1	A	0.23	0/7262	0.43	1/9813 (0.0%)
1	B	0.24	0/7262	0.43	0/9813
1	C	0.23	0/7262	0.42	0/9813
1	D	0.24	1/7262 (0.0%)	0.42	0/9813
1	E	0.23	0/7262	0.43	0/9813
1	F	0.23	0/7262	0.43	0/9813
All	All	0.24	1/43572 (0.0%)	0.43	1/58878 (0.0%)

All (1) bond length outliers are listed below:

Mol	Chain	Res	Type	Atoms	Z	Observed(Å)	Ideal(Å)
1	D	491	GLY	C-N	5.18	1.46	1.34

All (1) bond angle outliers are listed below:

Mol	Chain	Res	Type	Atoms	Z	Observed(°)	Ideal(°)
1	A	112	GLU	C-N-CD	-5.59	108.29	120.60

There are no chirality outliers.

There are no planarity outliers.

5.2 Too-close contacts [i](#)

In the following table, the Non-H and H(model) columns list the number of non-hydrogen atoms and hydrogen atoms in the chain respectively. The H(added) column lists the number of hydrogen atoms added and optimized by MolProbity. The Clashes column lists the number of clashes within the asymmetric unit, whereas Symm-Clashes lists symmetry-related clashes.

Mol	Chain	Non-H	H(model)	H(added)	Clashes	Symm-Clashes
1	A	7097	0	6997	124	0
1	B	7097	0	6997	98	0
1	C	7097	0	6999	122	0
1	D	7097	0	6998	84	0
1	E	7097	0	6995	90	0
1	F	7097	0	6997	101	0
2	A	15	0	0	3	0
2	B	15	0	0	0	0
2	C	10	0	0	2	0
2	D	10	0	0	3	0
2	E	20	0	0	2	0
2	F	15	0	0	2	0
3	A	2	0	0	0	0
3	B	2	0	0	0	0
3	C	1	0	0	0	0
3	D	2	0	0	0	0
3	E	2	0	0	0	0
3	F	2	0	0	0	0
4	C	26	0	19	3	0
4	E	26	0	19	3	0
4	F	26	0	19	5	0
All	All	42756	0	42040	594	0

The all-atom clashscore is defined as the number of clashes found per 1000 atoms (including hydrogen atoms). The all-atom clashscore for this structure is 7.

All (594) close contacts within the same asymmetric unit are listed below, sorted by their clash magnitude.

Atom-1	Atom-2	Interatomic distance (Å)	Clash overlap (Å)
1:A:453:TYR:CE2	1:A:476:TRP:HZ3	0.96	1.66
1:A:453:TYR:CE2	1:A:476:TRP:CZ3	1.85	1.64
1:C:453:TYR:CE2	1:C:476:TRP:HZ3	0.93	1.63
1:C:453:TYR:CE2	1:C:476:TRP:CZ3	1.82	1.58
1:C:453:TYR:CD2	1:C:476:TRP:CZ3	2.08	1.42
1:A:453:TYR:CD2	1:A:476:TRP:CZ3	2.11	1.37
1:C:453:TYR:CD2	1:C:476:TRP:CE3	2.13	1.37
1:A:453:TYR:CD2	1:A:476:TRP:CE3	2.16	1.32
1:E:541:THR:O	1:E:600:GLN:HG2	1.31	1.30
1:A:541:THR:O	1:A:600:GLN:HG2	1.32	1.26
1:B:541:THR:O	1:B:600:GLN:HG2	1.31	1.26
1:E:345:THR:CG2	1:E:462:LYS:HE2	1.66	1.26
1:C:541:THR:O	1:C:600:GLN:HG2	1.29	1.25

Continued on next page...

Continued from previous page...

Atom-1	Atom-2	Interatomic distance (Å)	Clash overlap (Å)
1:D:541:THR:O	1:D:600:GLN:HG2	1.33	1.19
1:E:345:THR:HG21	1:E:462:LYS:HE2	1.36	1.05
1:A:453:TYR:CD2	1:A:476:TRP:HZ3	1.62	1.05
1:F:541:THR:O	1:F:600:GLN:HG2	1.60	1.02
1:A:476:TRP:CZ2	1:A:602:GLY:CA	2.44	1.01
1:A:453:TYR:HD2	1:A:476:TRP:CE3	1.75	1.00
1:C:453:TYR:CD2	1:C:476:TRP:HE3	1.73	1.00
1:C:453:TYR:HE2	1:C:476:TRP:CZ3	1.81	0.99
1:C:476:TRP:CZ2	1:C:602:GLY:CA	2.47	0.98
1:F:541:THR:O	1:F:600:GLN:NE2	1.96	0.97
1:A:597:ARG:NE	1:A:599:ASP:OD1	1.98	0.97
1:A:476:TRP:CZ2	1:A:602:GLY:HA3	2.00	0.96
1:C:476:TRP:CZ2	1:C:602:GLY:HA3	2.01	0.96
1:E:597:ARG:NE	1:E:599:ASP:OD1	1.98	0.96
1:B:678:HIS:NE2	1:D:879:GLU:OE2	1.99	0.95
1:B:597:ARG:NE	1:B:599:ASP:OD1	1.98	0.95
1:C:597:ARG:NE	1:C:599:ASP:OD1	1.99	0.95
1:E:345:THR:CG2	1:E:462:LYS:CE	2.45	0.94
1:D:597:ARG:NE	1:D:599:ASP:OD1	1.99	0.94
1:B:773:ASP:OD1	1:B:858:ARG:NE	2.01	0.94
1:A:293:TRP:HE1	1:A:295:PHE:HE2	1.16	0.93
1:E:345:THR:HG22	1:E:462:LYS:CE	1.98	0.93
1:A:453:TYR:HE2	1:A:476:TRP:CZ3	1.83	0.93
1:F:597:ARG:NE	1:F:599:ASP:OD1	2.01	0.92
1:E:293:TRP:HE1	1:E:295:PHE:HE1	1.07	0.92
1:F:773:ASP:OD1	1:F:858:ARG:NE	2.01	0.92
1:C:453:TYR:CZ	1:C:476:TRP:HZ3	1.84	0.91
1:D:643:GLU:O	1:D:646:THR:OG1	1.87	0.91
1:C:453:TYR:HD2	1:C:476:TRP:HE3	1.04	0.91
1:A:773:ASP:OD1	1:A:858:ARG:NE	2.04	0.91
1:E:175:ARG:HH11	1:E:175:ARG:HG2	1.34	0.91
1:C:773:ASP:OD1	1:C:858:ARG:NE	2.03	0.90
1:D:773:ASP:OD1	1:D:858:ARG:NE	2.03	0.90
1:E:293:TRP:CZ2	1:E:308:GLY:HA3	2.07	0.89
1:D:639:LEU:HD23	1:D:642:SER:HB2	1.53	0.89
1:A:476:TRP:CE2	1:A:602:GLY:CA	2.56	0.89
1:A:324:GLY:HA3	1:B:155:GLU:OE1	1.74	0.88
1:F:473:ARG:NH2	2:F:1003:PO4:O1	2.07	0.88
1:E:773:ASP:OD1	1:E:858:ARG:NE	2.06	0.87
1:A:453:TYR:CZ	1:A:476:TRP:HZ3	1.87	0.87
1:A:293:TRP:NE1	1:A:295:PHE:CE2	2.43	0.86

Continued on next page...

Continued from previous page...

Atom-1	Atom-2	Interatomic distance (Å)	Clash overlap (Å)
1:C:476:TRP:CE2	1:C:602:GLY:CA	2.59	0.86
1:A:476:TRP:CE2	1:A:602:GLY:HA3	2.11	0.85
1:C:476:TRP:CE2	1:C:602:GLY:HA3	2.12	0.85
1:C:324:GLY:HA3	1:D:155:GLU:OE1	1.76	0.84
1:E:487:PHE:O	1:E:491:GLY:HA3	1.78	0.84
1:B:487:PHE:O	1:B:491:GLY:HA3	1.78	0.83
1:A:487:PHE:O	1:A:491:GLY:HA3	1.78	0.83
1:C:453:TYR:HD2	1:C:476:TRP:CE3	1.73	0.82
1:A:453:TYR:HD2	1:A:476:TRP:HE3	1.07	0.82
1:F:487:PHE:O	1:F:491:GLY:HA3	1.79	0.82
1:A:324:GLY:CA	1:B:155:GLU:OE1	2.27	0.81
1:C:321:LEU:HD12	1:C:745:GLY:O	1.81	0.80
1:C:616:ASN:ND2	1:C:662:VAL:CG1	2.44	0.80
1:C:324:GLY:CA	1:D:155:GLU:OE1	2.30	0.80
1:A:616:ASN:ND2	1:A:662:VAL:CG1	2.45	0.79
1:C:293:TRP:CZ2	1:C:308:GLY:HA3	2.18	0.79
1:B:293:TRP:CZ2	1:B:308:GLY:HA3	2.18	0.79
1:D:293:TRP:CZ2	1:D:308:GLY:HA3	2.18	0.79
1:F:293:TRP:CZ2	1:F:308:GLY:HA3	2.18	0.78
1:F:541:THR:O	1:F:600:GLN:CG	2.30	0.78
1:B:541:THR:O	1:B:600:GLN:CG	2.24	0.78
1:E:541:THR:O	1:E:600:GLN:CG	2.25	0.78
1:A:541:THR:O	1:A:600:GLN:CG	2.26	0.78
1:A:476:TRP:CZ2	1:A:602:GLY:N	2.50	0.78
1:D:644:LYS:O	1:D:647:ASN:HB2	1.84	0.77
1:A:616:ASN:ND2	1:A:662:VAL:HG11	1.99	0.77
1:C:487:PHE:O	1:C:491:GLY:HA3	1.83	0.77
1:C:155:GLU:OE1	1:D:324:GLY:HA3	1.84	0.77
1:A:106:GLY:HA2	1:A:111:GLU:O	1.85	0.77
1:B:616:ASN:ND2	1:B:662:VAL:CG1	2.48	0.76
1:C:616:ASN:ND2	1:C:662:VAL:HG11	2.00	0.76
1:A:301:TYR:CE1	1:A:356:PHE:CE2	2.74	0.76
1:A:155:GLU:OE1	1:B:324:GLY:HA3	1.86	0.76
1:D:321:LEU:HD12	1:D:745:GLY:O	1.85	0.76
1:E:7:THR:OG1	1:E:10:GLU:HG3	1.87	0.75
1:C:541:THR:O	1:C:600:GLN:CG	2.23	0.75
1:C:476:TRP:CZ2	1:C:602:GLY:N	2.54	0.75
1:B:662:VAL:HG13	1:B:666:ASP:O	1.87	0.75
1:D:541:THR:O	1:D:600:GLN:CG	2.26	0.75
1:A:321:LEU:HD12	1:A:745:GLY:O	1.86	0.74
1:C:261:SER:O	1:C:586:GLU:HG2	1.86	0.74

Continued on next page...

Continued from previous page...

Atom-1	Atom-2	Interatomic distance (Å)	Clash overlap (Å)
1:E:175:ARG:HG2	1:E:175:ARG:NH1	2.01	0.74
1:A:476:TRP:CE2	1:A:602:GLY:HA2	2.22	0.74
1:B:616:ASN:ND2	1:B:662:VAL:HG11	2.03	0.74
1:A:473:ARG:HH21	2:A:1002:PO4:P	2.10	0.73
1:D:261:SER:O	1:D:586:GLU:HG2	1.88	0.73
1:F:110:HIS:CD2	4:F:1004:SAH:C3'	2.72	0.73
1:A:662:VAL:HG13	1:A:666:ASP:O	1.88	0.73
1:C:662:VAL:HG13	1:C:666:ASP:O	1.90	0.72
1:A:7:THR:OG1	1:A:10:GLU:HG3	1.89	0.72
1:A:293:TRP:CZ2	1:A:308:GLY:HA3	2.25	0.72
1:A:301:TYR:CD1	1:A:356:PHE:CE2	2.78	0.72
1:D:639:LEU:HD23	1:D:642:SER:CB	2.18	0.72
1:F:110:HIS:HD2	4:F:1004:SAH:C3'	2.02	0.72
1:B:7:THR:OG1	1:B:10:GLU:HG3	1.89	0.72
1:B:543:ILE:HB	1:B:600:GLN:HA	1.71	0.72
1:E:321:LEU:HD12	1:E:745:GLY:O	1.89	0.72
1:D:7:THR:OG1	1:D:10:GLU:HG3	1.90	0.71
1:F:321:LEU:HD12	1:F:745:GLY:O	1.88	0.71
1:E:293:TRP:NE1	1:E:295:PHE:CE1	2.58	0.71
1:B:540:ASP:O	1:B:600:GLN:HB3	1.90	0.71
1:A:261:SER:O	1:A:586:GLU:HG2	1.91	0.71
1:A:453:TYR:CD2	1:A:476:TRP:HE3	1.75	0.71
1:C:540:ASP:O	1:C:600:GLN:HB3	1.91	0.70
1:C:7:THR:OG1	1:C:10:GLU:HG3	1.91	0.70
1:F:540:ASP:O	1:F:600:GLN:HB3	1.91	0.70
1:C:543:ILE:HB	1:C:600:GLN:HA	1.74	0.70
1:A:476:TRP:NE1	1:A:602:GLY:HA2	2.06	0.70
1:A:540:ASP:O	1:A:600:GLN:HB3	1.91	0.70
1:C:476:TRP:CE2	1:C:602:GLY:HA2	2.27	0.69
1:D:540:ASP:O	1:D:600:GLN:HB3	1.93	0.69
1:E:641:ARG:O	1:E:643:GLU:N	2.25	0.69
1:E:540:ASP:O	1:E:600:GLN:HB3	1.92	0.69
1:A:616:ASN:HD22	1:A:662:VAL:CG1	2.04	0.69
1:C:231:LYS:HE2	1:F:292:THR:HG22	1.75	0.69
1:E:234:SER:O	1:E:238:GLN:HG3	1.94	0.68
1:A:263:THR:CB	1:A:300:PRO:HG3	2.23	0.68
1:E:543:ILE:HB	1:E:600:GLN:HA	1.75	0.68
1:D:543:ILE:HB	1:D:600:GLN:HA	1.74	0.68
1:E:487:PHE:O	1:E:491:GLY:CA	2.42	0.68
1:E:101:LYS:NZ	2:E:1004:PO4:O2	2.27	0.68
1:C:616:ASN:HD22	1:C:662:VAL:CG1	2.05	0.67

Continued on next page...

Continued from previous page...

Atom-1	Atom-2	Interatomic distance (Å)	Clash overlap (Å)
1:B:487:PHE:O	1:B:491:GLY:CA	2.42	0.67
1:C:476:TRP:NE1	1:C:602:GLY:HA2	2.09	0.67
1:A:641:ARG:O	1:A:644:LYS:HG2	1.95	0.66
1:C:569:ILE:O	1:C:573:THR:HB	1.96	0.66
1:E:345:THR:HG22	1:E:462:LYS:HE3	1.77	0.66
1:A:487:PHE:O	1:A:491:GLY:CA	2.43	0.66
1:C:155:GLU:OE1	1:D:324:GLY:CA	2.43	0.66
1:F:487:PHE:O	1:F:491:GLY:CA	2.44	0.66
1:A:293:TRP:CH2	1:A:308:GLY:HA3	2.31	0.65
1:B:616:ASN:HD22	1:B:662:VAL:CG1	2.08	0.65
1:F:7:THR:HG22	1:F:8:LEU:N	2.12	0.65
1:B:186:PRO:O	1:B:192:MET:SD	2.55	0.65
1:E:261:SER:O	1:E:586:GLU:HG2	1.97	0.65
1:A:112:GLU:OE2	1:A:113:PRO:HD2	1.96	0.65
1:A:188:THR:OG1	1:A:191:MET:HG2	1.96	0.64
1:D:569:ILE:O	1:D:573:THR:HB	1.97	0.64
1:E:569:ILE:O	1:E:573:THR:HB	1.97	0.64
1:B:601:ARG:HG3	1:B:602:GLY:N	2.13	0.64
1:F:569:ILE:O	1:F:573:THR:HB	1.98	0.64
1:A:155:GLU:OE1	1:B:324:GLY:CA	2.45	0.64
1:E:186:PRO:O	1:E:192:MET:SD	2.56	0.64
1:F:543:ILE:HB	1:F:600:GLN:HA	1.79	0.64
1:A:263:THR:HG21	1:A:300:PRO:CG	2.28	0.63
1:A:569:ILE:O	1:A:573:THR:HB	1.98	0.63
1:A:301:TYR:CD1	1:A:356:PHE:HE2	2.15	0.63
1:D:186:PRO:O	1:D:192:MET:SD	2.56	0.63
1:C:601:ARG:HG3	1:C:602:GLY:N	2.13	0.63
1:C:192:MET:CE	1:C:230:ILE:HA	2.29	0.63
1:D:601:ARG:HG3	1:D:602:GLY:N	2.14	0.63
1:F:541:THR:HB	1:F:600:GLN:NE2	2.14	0.62
1:A:543:ILE:HB	1:A:600:GLN:HA	1.81	0.62
1:C:487:PHE:O	1:C:491:GLY:CA	2.47	0.62
1:F:110:HIS:CD2	4:F:1004:SAH:H3'	2.35	0.62
1:E:192:MET:HE1	1:E:230:ILE:HA	1.81	0.62
1:F:601:ARG:HG3	1:F:602:GLY:N	2.15	0.62
1:A:601:ARG:HG3	1:A:602:GLY:N	2.14	0.62
1:F:112:GLU:HB3	1:F:113:PRO:CD	2.30	0.62
1:D:234:SER:O	1:D:238:GLN:HG3	2.00	0.61
1:C:234:SER:O	1:C:238:GLN:HG3	1.99	0.61
1:C:696:TRP:HE1	1:B:200:ARG:CZ	2.13	0.61
1:B:234:SER:O	1:B:238:GLN:HG3	1.99	0.61

Continued on next page...

Continued from previous page...

Atom-1	Atom-2	Interatomic distance (Å)	Clash overlap (Å)
1:D:784:SER:HB3	1:D:869:VAL:HG13	1.83	0.61
1:F:110:HIS:HD2	4:F:1004:SAH:O3'	1.82	0.61
1:C:165:LEU:HA	1:C:168:VAL:HG22	1.83	0.61
1:E:175:ARG:HG3	1:E:175:ARG:O	2.00	0.61
1:A:261:SER:C	1:A:586:GLU:HG2	2.21	0.61
1:D:112:GLU:HB3	1:D:113:PRO:CD	2.31	0.61
1:B:569:ILE:O	1:B:573:THR:HB	2.01	0.60
1:A:84:ARG:HA	1:A:113:PRO:HA	1.82	0.60
1:F:165:LEU:HA	1:F:168:VAL:HG22	1.84	0.60
1:A:616:ASN:ND2	1:A:662:VAL:HG13	2.17	0.60
1:C:616:ASN:ND2	1:C:662:VAL:HG13	2.16	0.60
1:E:601:ARG:HG3	1:E:602:GLY:N	2.16	0.59
1:C:784:SER:HB3	1:C:869:VAL:HG13	1.85	0.59
1:B:165:LEU:HA	1:B:168:VAL:HG22	1.83	0.59
1:D:165:LEU:HA	1:D:168:VAL:HG22	1.85	0.59
1:F:784:SER:HB3	1:F:869:VAL:HG13	1.85	0.59
1:C:252:LYS:HE2	1:F:297:GLU:HB3	1.82	0.59
1:A:165:LEU:HA	1:A:168:VAL:HG22	1.84	0.59
1:E:784:SER:HB3	1:E:869:VAL:HG13	1.85	0.58
1:A:188:THR:OG1	1:A:191:MET:CG	2.51	0.58
1:B:644:LYS:HA	1:B:647:ASN:HB2	1.85	0.58
1:C:453:TYR:CZ	1:C:476:TRP:CZ3	2.73	0.58
1:A:324:GLY:N	1:B:155:GLU:OE1	2.36	0.58
1:E:487:PHE:O	1:E:491:GLY:N	2.36	0.58
1:F:261:SER:O	1:F:586:GLU:HG2	2.04	0.58
1:C:644:LYS:HA	1:C:647:ASN:HB2	1.86	0.58
1:A:188:THR:HG1	1:A:191:MET:HG2	1.69	0.58
1:A:476:TRP:HZ2	1:A:602:GLY:N	2.00	0.58
1:D:41:ARG:NH2	2:D:1002:PO4:O1	2.35	0.58
1:E:165:LEU:HA	1:E:168:VAL:HG22	1.86	0.57
1:E:112:GLU:HB3	1:E:113:PRO:CD	2.34	0.57
1:A:263:THR:HG21	1:A:300:PRO:HG3	1.85	0.57
1:C:541:THR:C	1:C:600:GLN:HG2	2.18	0.57
1:F:487:PHE:O	1:F:491:GLY:N	2.37	0.57
1:C:186:PRO:O	1:C:192:MET:SD	2.62	0.57
1:A:551:GLU:OE2	1:A:615:THR:OG1	2.21	0.57
1:B:487:PHE:O	1:B:491:GLY:N	2.36	0.57
1:A:263:THR:HB	1:A:300:PRO:HG3	1.86	0.57
1:A:487:PHE:O	1:A:491:GLY:N	2.37	0.57
1:A:477:TYR:HB3	1:A:604:GLY:HA3	1.86	0.57
1:B:616:ASN:ND2	1:B:662:VAL:HG13	2.20	0.57

Continued on next page...

Continued from previous page...

Atom-1	Atom-2	Interatomic distance (Å)	Clash overlap (Å)
1:E:551:GLU:OE2	1:E:615:THR:OG1	2.20	0.57
1:B:192:MET:CE	1:B:230:ILE:HA	2.35	0.56
1:F:541:THR:O	1:F:600:GLN:CD	2.43	0.56
1:D:261:SER:C	1:D:586:GLU:HG2	2.25	0.56
1:D:639:LEU:CD2	1:D:642:SER:HB2	2.32	0.56
1:A:453:TYR:CZ	1:A:476:TRP:CZ3	2.76	0.56
1:C:41:ARG:NH2	2:C:1002:PO4:O4	2.39	0.56
1:C:487:PHE:O	1:C:491:GLY:N	2.37	0.56
1:A:784:SER:HB3	1:A:869:VAL:HG13	1.87	0.56
1:A:644:LYS:HA	1:A:647:ASN:HB2	1.88	0.56
1:A:112:GLU:OE2	1:A:113:PRO:CD	2.54	0.56
1:B:392:PRO:HA	1:B:492:PHE:CE2	2.41	0.56
1:D:468:LYS:HG2	1:D:469:ALA:N	2.20	0.56
1:C:192:MET:HE2	1:C:230:ILE:HA	1.87	0.56
1:E:720:LEU:HD12	1:E:724:ARG:HB2	1.88	0.56
1:B:551:GLU:OE2	1:B:615:THR:OG1	2.22	0.55
1:B:477:TYR:HB3	1:B:604:GLY:HA3	1.88	0.55
1:E:192:MET:CE	1:E:230:ILE:HA	2.36	0.55
1:E:691:LYS:NZ	2:E:1003:PO4:O3	2.35	0.55
1:F:644:LYS:HA	1:F:647:ASN:HB2	1.89	0.55
1:A:473:ARG:NH2	2:A:1002:PO4:O3	2.39	0.55
1:C:261:SER:C	1:C:586:GLU:HG2	2.26	0.55
1:D:468:LYS:HG2	1:D:469:ALA:H	1.70	0.55
1:E:293:TRP:HZ3	1:E:594:ILE:HD13	1.72	0.55
1:F:110:HIS:CD2	4:F:1004:SAH:C2'	2.89	0.55
1:C:57:ARG:NH1	2:C:1002:PO4:O1	2.40	0.55
1:C:696:TRP:HE1	1:B:200:ARG:NH1	2.05	0.55
1:D:639:LEU:HD21	1:D:642:SER:HA	1.89	0.55
1:C:73:PRO:HB3	1:C:142:THR:HG21	1.89	0.55
1:F:353:GLN:HE22	1:F:581:VAL:HG11	1.71	0.55
1:A:879:GLU:OE2	1:C:678:HIS:NE2	2.40	0.54
1:F:551:GLU:OE2	1:F:615:THR:OG1	2.22	0.54
1:D:112:GLU:HB3	1:D:113:PRO:HD2	1.89	0.54
1:D:477:TYR:HB3	1:D:604:GLY:HA3	1.89	0.54
1:B:57:ARG:HH12	1:B:213:ARG:HE	1.56	0.54
1:F:477:TYR:HB3	1:F:604:GLY:HA3	1.89	0.54
1:A:262:GLY:HA3	1:A:586:GLU:CG	2.38	0.54
1:C:477:TYR:HB3	1:C:604:GLY:HA3	1.89	0.54
1:B:192:MET:HE1	1:B:230:ILE:HA	1.89	0.54
1:A:597:ARG:CZ	1:A:599:ASP:OD1	2.56	0.54
1:A:110:HIS:O	1:A:111:GLU:HG3	2.07	0.54

Continued on next page...

Continued from previous page...

Atom-1	Atom-2	Interatomic distance (Å)	Clash overlap (Å)
1:C:392:PRO:HA	1:C:492:PHE:CE2	2.43	0.54
1:B:271:GLU:OE2	1:B:545:ARG:NH2	2.41	0.54
1:D:192:MET:CE	1:D:230:ILE:HA	2.38	0.54
1:A:168:VAL:HG21	1:A:181:ILE:HD13	1.89	0.54
1:A:301:TYR:HE1	1:A:356:PHE:CE2	2.22	0.54
1:B:468:LYS:HG2	1:B:469:ALA:N	2.23	0.54
1:B:597:ARG:CZ	1:B:599:ASP:OD1	2.55	0.54
1:D:639:LEU:CD2	1:D:642:SER:HA	2.38	0.54
1:E:112:GLU:HB3	1:E:113:PRO:HD2	1.90	0.54
1:F:867:ASN:O	1:F:871:MET:HG2	2.08	0.54
1:A:263:THR:CG2	1:A:300:PRO:HG3	2.38	0.53
1:C:476:TRP:HZ2	1:C:602:GLY:N	2.03	0.53
1:D:579:VAL:HG12	1:D:581:VAL:HG23	1.91	0.53
1:E:579:VAL:HG12	1:E:581:VAL:HG23	1.90	0.53
1:E:641:ARG:O	1:E:642:SER:C	2.45	0.53
1:F:468:LYS:HG2	1:F:469:ALA:N	2.22	0.53
1:E:261:SER:C	1:E:586:GLU:HG2	2.29	0.53
1:F:541:THR:C	1:F:600:GLN:NE2	2.61	0.53
1:A:263:THR:HG21	1:A:300:PRO:HG2	1.91	0.53
1:B:640:ARG:O	1:B:641:ARG:C	2.47	0.53
1:B:784:SER:HB3	1:B:869:VAL:HG13	1.90	0.53
1:F:579:VAL:HG12	1:F:581:VAL:HG23	1.90	0.53
1:C:476:TRP:HH2	1:C:605:GLN:HE21	1.54	0.53
1:B:541:THR:C	1:B:600:GLN:HG2	2.19	0.53
1:D:73:PRO:HB3	1:D:142:THR:HG21	1.90	0.53
1:E:644:LYS:HA	1:E:647:ASN:HB2	1.89	0.53
1:B:675:ARG:HA	1:B:678:HIS:CE1	2.44	0.53
1:B:188:THR:OG1	1:B:191:MET:CG	2.57	0.52
1:B:392:PRO:HB3	1:B:492:PHE:CZ	2.44	0.52
1:D:263:THR:HG21	1:D:300:PRO:HG3	1.91	0.52
1:B:579:VAL:HG12	1:B:581:VAL:HG23	1.91	0.52
1:D:541:THR:C	1:D:600:GLN:HG2	2.22	0.52
1:F:112:GLU:HB3	1:F:113:PRO:HD2	1.90	0.52
1:F:662:VAL:HG12	1:F:667:CYS:HA	1.91	0.52
1:E:477:TYR:HB3	1:E:604:GLY:HA3	1.92	0.52
1:D:639:LEU:CD2	1:D:642:SER:CB	2.86	0.52
1:A:541:THR:C	1:A:600:GLN:HG2	2.20	0.52
1:F:462:LYS:NZ	2:F:1002:PO4:O3	2.43	0.52
1:A:185:CYS:O	1:A:191:MET:CE	2.58	0.52
1:D:168:VAL:HG21	1:D:181:ILE:HD13	1.92	0.52
1:F:468:LYS:HG2	1:F:469:ALA:H	1.74	0.52

Continued on next page...

Continued from previous page...

Atom-1	Atom-2	Interatomic distance (Å)	Clash overlap (Å)
1:A:73:PRO:HB3	1:A:142:THR:HG21	1.92	0.52
1:C:579:VAL:HG12	1:C:581:VAL:HG23	1.92	0.52
1:C:640:ARG:O	1:C:641:ARG:C	2.47	0.52
1:A:293:TRP:HZ2	1:A:295:PHE:CZ	2.28	0.51
1:B:73:PRO:HB3	1:B:142:THR:HG21	1.92	0.51
1:E:541:THR:C	1:E:600:GLN:HG2	2.20	0.51
1:E:662:VAL:HG12	1:E:667:CYS:HA	1.91	0.51
1:B:468:LYS:HG2	1:B:469:ALA:H	1.76	0.51
1:C:188:THR:HG1	1:C:191:MET:HG2	1.75	0.51
1:F:271:GLU:OE2	1:F:545:ARG:NH2	2.44	0.51
1:F:597:ARG:CZ	1:F:599:ASP:OD1	2.57	0.51
1:A:262:GLY:HA3	1:A:586:GLU:HG2	1.92	0.51
1:C:188:THR:OG1	1:C:191:MET:CG	2.59	0.51
1:B:263:THR:HG21	1:B:300:PRO:HG3	1.91	0.51
1:E:82:CYS:O	4:E:1005:SAH:HA	2.11	0.51
1:D:597:ARG:CZ	1:D:599:ASP:OD1	2.57	0.51
1:C:597:ARG:CZ	1:C:599:ASP:OD1	2.57	0.51
1:F:7:THR:CG2	1:F:8:LEU:N	2.73	0.51
1:C:696:TRP:CE2	1:B:200:ARG:NH2	2.79	0.51
1:E:73:PRO:HB3	1:E:142:THR:HG21	1.93	0.51
1:C:73:PRO:HG2	1:C:94:ILE:HD13	1.92	0.50
1:B:499:MET:HB2	1:B:509:GLU:HB2	1.94	0.50
1:E:324:GLY:CA	1:F:155:GLU:OE1	2.59	0.50
1:F:143:LEU:O	1:F:179:PHE:HA	2.11	0.50
1:F:7:THR:HG21	1:F:187:TYR:O	2.11	0.50
1:E:324:GLY:HA3	1:F:155:GLU:OE1	2.11	0.50
1:E:392:PRO:HA	1:E:492:PHE:CE2	2.46	0.50
1:A:293:TRP:CZ2	1:A:295:PHE:CZ	2.99	0.50
1:A:579:VAL:HG12	1:A:581:VAL:HG23	1.94	0.50
1:F:720:LEU:HD12	1:F:724:ARG:HB2	1.93	0.50
1:E:499:MET:HB2	1:E:509:GLU:HB2	1.93	0.50
1:F:293:TRP:CZ3	1:F:594:ILE:HD13	2.46	0.50
1:C:392:PRO:HB3	1:C:492:PHE:CZ	2.46	0.50
1:B:168:VAL:HG21	1:B:181:ILE:HD13	1.92	0.50
1:D:188:THR:OG1	1:D:191:MET:CG	2.60	0.50
1:E:597:ARG:CZ	1:E:599:ASP:OD1	2.57	0.50
1:C:551:GLU:OE2	1:C:615:THR:OG1	2.23	0.50
1:B:143:LEU:O	1:B:179:PHE:HA	2.12	0.50
1:E:168:VAL:HG21	1:E:181:ILE:HD13	1.94	0.49
1:F:541:THR:HB	1:F:600:GLN:HE22	1.77	0.49
1:F:392:PRO:HA	1:F:492:PHE:CE2	2.47	0.49

Continued on next page...

Continued from previous page...

Atom-1	Atom-2	Interatomic distance (Å)	Clash overlap (Å)
1:A:143:LEU:O	1:A:179:PHE:HA	2.12	0.49
1:E:143:LEU:O	1:E:179:PHE:HA	2.12	0.49
1:D:188:THR:HG1	1:D:191:MET:HG2	1.78	0.49
1:D:293:TRP:CH2	1:D:308:GLY:HA3	2.48	0.49
1:F:642:SER:O	1:F:643:GLU:C	2.50	0.49
1:D:143:LEU:O	1:D:179:PHE:HA	2.12	0.49
1:E:171:TRP:O	1:E:174:LYS:HB2	2.13	0.49
1:A:476:TRP:HH2	1:A:605:GLN:HE21	1.58	0.49
1:C:271:GLU:OE2	1:C:545:ARG:NH2	2.46	0.49
1:E:293:TRP:CZ3	1:E:594:ILE:HD13	2.48	0.49
1:C:720:LEU:HD12	1:C:724:ARG:HB2	1.95	0.49
1:A:499:MET:HB2	1:A:509:GLU:HB2	1.94	0.49
1:C:168:VAL:HG21	1:C:181:ILE:HD13	1.95	0.49
1:D:720:LEU:HD12	1:D:724:ARG:HB2	1.95	0.49
1:E:271:GLU:OE2	1:E:545:ARG:NH2	2.46	0.49
1:E:601:ARG:HG3	1:E:602:GLY:H	1.78	0.48
1:C:250:PRO:HG3	1:F:264:ARG:NH2	2.28	0.48
1:C:569:ILE:O	1:C:573:THR:CB	2.61	0.48
1:C:581:VAL:HG12	1:C:582:LEU:N	2.29	0.48
1:E:730:CYS:SG	1:E:731:ARG:N	2.86	0.48
1:C:493:LEU:HA	1:C:498:TRP:CD1	2.49	0.48
1:B:581:VAL:HG12	1:B:582:LEU:N	2.28	0.48
1:F:541:THR:CA	1:F:600:GLN:NE2	2.76	0.48
1:C:143:LEU:O	1:C:179:PHE:HA	2.13	0.48
1:C:188:THR:OG1	1:C:191:MET:HG2	2.14	0.48
1:C:696:TRP:NE1	1:B:200:ARG:CZ	2.76	0.48
1:B:158:GLU:OE1	1:B:190:THR:HB	2.13	0.48
1:A:581:VAL:HG12	1:A:582:LEU:N	2.29	0.48
1:C:226:LYS:HE3	1:F:290:ALA:HB3	1.95	0.48
1:D:581:VAL:HG12	1:D:582:LEU:N	2.29	0.48
1:F:300:PRO:HG3	1:F:583:ARG:HD3	1.95	0.48
1:C:730:CYS:SG	1:C:731:ARG:N	2.87	0.48
1:D:158:GLU:OE1	1:D:190:THR:HB	2.14	0.48
1:F:730:CYS:SG	1:F:731:ARG:N	2.87	0.48
1:F:293:TRP:HZ3	1:F:594:ILE:HD13	1.79	0.48
1:B:730:CYS:SG	1:B:731:ARG:N	2.87	0.48
1:F:168:VAL:HG21	1:F:181:ILE:HD13	1.95	0.48
1:B:601:ARG:HG3	1:B:602:GLY:H	1.78	0.47
1:C:696:TRP:CZ2	1:B:200:ARG:NH2	2.83	0.47
1:E:581:VAL:HG12	1:E:582:LEU:N	2.29	0.47
1:F:73:PRO:HB3	1:F:142:THR:HG21	1.96	0.47

Continued on next page...

Continued from previous page...

Atom-1	Atom-2	Interatomic distance (Å)	Clash overlap (Å)
1:C:146:ASP:OD2	4:C:1003:SAH:N	2.42	0.47
1:D:551:GLU:OE2	1:D:615:THR:OG1	2.24	0.47
1:F:581:VAL:HG12	1:F:582:LEU:N	2.28	0.47
1:F:601:ARG:HG3	1:F:602:GLY:H	1.78	0.47
1:C:192:MET:CE	1:C:230:ILE:CG1	2.92	0.47
1:C:499:MET:HB2	1:C:509:GLU:HB2	1.96	0.47
1:A:730:CYS:SG	1:A:731:ARG:N	2.87	0.47
1:B:493:LEU:HA	1:B:498:TRP:CD1	2.50	0.47
1:D:493:LEU:HA	1:D:498:TRP:CD1	2.50	0.47
1:D:499:MET:HB2	1:D:509:GLU:HB2	1.95	0.47
1:D:853:ILE:HA	1:D:858:ARG:HD3	1.97	0.47
1:E:853:ILE:HA	1:E:858:ARG:HD3	1.96	0.47
1:D:569:ILE:O	1:D:573:THR:CB	2.62	0.47
1:A:473:ARG:NH2	2:A:1002:PO4:P	2.85	0.47
1:B:188:THR:OG1	1:B:191:MET:HG2	2.14	0.47
1:D:188:THR:OG1	1:D:191:MET:HG2	2.15	0.47
1:E:50:THR:HG21	1:E:588:GLY:HA2	1.97	0.47
1:E:73:PRO:HG2	1:E:94:ILE:HD13	1.96	0.47
1:E:146:ASP:OD2	4:E:1005:SAH:N	2.48	0.47
1:F:541:THR:HA	1:F:600:GLN:CD	2.34	0.47
1:D:213:ARG:NH2	2:D:1002:PO4:O4	2.48	0.46
1:D:344:MET:HE2	1:D:461:LYS:HG2	1.97	0.46
1:F:492:PHE:HA	1:F:495:GLU:HB2	1.97	0.46
1:B:172:LEU:HD11	1:B:181:ILE:CD1	2.44	0.46
1:D:73:PRO:HG2	1:D:94:ILE:HD13	1.97	0.46
1:C:82:CYS:O	4:C:1003:SAH:HA	2.15	0.46
1:C:690:ARG:NH1	1:C:699:SER:OG	2.49	0.46
1:E:690:ARG:NH1	1:E:699:SER:OG	2.46	0.46
1:F:569:ILE:O	1:F:573:THR:CB	2.63	0.46
1:A:720:LEU:HD12	1:A:724:ARG:HB2	1.97	0.46
1:F:493:LEU:HA	1:F:498:TRP:CD1	2.50	0.46
1:C:694:GLN:HB3	1:C:697:LYS:HB2	1.97	0.46
1:B:492:PHE:O	1:B:493:LEU:C	2.54	0.46
1:B:720:LEU:HD12	1:B:724:ARG:HB2	1.98	0.46
1:E:492:PHE:HA	1:E:495:GLU:HB2	1.98	0.46
1:E:569:ILE:O	1:E:573:THR:CB	2.63	0.46
1:C:696:TRP:NE1	1:B:200:ARG:NH2	2.63	0.46
1:E:392:PRO:HB3	1:E:492:PHE:CZ	2.51	0.46
1:F:153:SER:HB3	1:F:156:VAL:HG23	1.98	0.46
1:F:492:PHE:O	1:F:493:LEU:C	2.54	0.46
1:E:192:MET:HE2	1:E:230:ILE:HG12	1.97	0.46

Continued on next page...

Continued from previous page...

Atom-1	Atom-2	Interatomic distance (Å)	Clash overlap (Å)
1:A:690:ARG:NH1	1:A:699:SER:OG	2.46	0.46
1:F:344:MET:HE2	1:F:461:LYS:HG2	1.97	0.46
1:C:158:GLU:OE1	1:C:190:THR:HB	2.16	0.46
1:D:188:THR:O	1:D:192:MET:HG2	2.16	0.46
1:B:73:PRO:HG2	1:B:94:ILE:HD13	1.97	0.45
1:B:175:ARG:O	1:B:175:ARG:HG3	2.15	0.45
1:D:192:MET:HE2	1:D:230:ILE:HA	1.98	0.45
1:B:492:PHE:O	1:B:495:GLU:N	2.50	0.45
1:A:601:ARG:HG3	1:A:602:GLY:H	1.78	0.45
1:B:523:MET:HA	1:B:526:ILE:HD12	1.98	0.45
1:C:50:THR:HG21	1:C:588:GLY:HA2	1.97	0.45
1:C:601:ARG:HG3	1:C:602:GLY:H	1.78	0.45
1:B:342:ILE:HD12	1:B:738:GLY:HA3	1.97	0.45
1:D:690:ARG:NH1	1:D:699:SER:OG	2.49	0.45
1:A:271:GLU:OE2	1:A:545:ARG:NH2	2.50	0.45
1:F:492:PHE:O	1:F:495:GLU:N	2.50	0.45
1:B:492:PHE:HA	1:B:495:GLU:HB2	1.98	0.45
1:F:50:THR:HG21	1:F:588:GLY:HA2	1.98	0.45
1:F:262:GLY:HA3	1:F:586:GLU:HG2	1.99	0.45
1:A:492:PHE:HA	1:A:495:GLU:HB2	1.98	0.45
1:D:153:SER:HB3	1:D:156:VAL:HG23	1.99	0.45
1:E:150:SER:OG	1:E:216:THR:HG21	2.17	0.45
1:A:301:TYR:HD1	1:A:356:PHE:CE2	2.29	0.45
1:C:492:PHE:HA	1:C:495:GLU:HB2	1.98	0.45
1:C:492:PHE:O	1:C:493:LEU:C	2.54	0.45
1:F:853:ILE:HA	1:F:858:ARG:HD3	1.99	0.45
1:B:192:MET:HE2	1:B:230:ILE:HG12	1.98	0.45
1:A:301:TYR:CE1	1:A:356:PHE:CZ	3.04	0.44
1:A:392:PRO:HA	1:A:492:PHE:CE2	2.52	0.44
1:D:601:ARG:HG3	1:D:602:GLY:H	1.78	0.44
1:E:492:PHE:O	1:E:493:LEU:C	2.54	0.44
1:F:499:MET:HB2	1:F:509:GLU:HB2	1.98	0.44
1:A:492:PHE:O	1:A:493:LEU:C	2.54	0.44
1:A:493:LEU:HA	1:A:498:TRP:CD1	2.53	0.44
1:A:569:ILE:O	1:A:573:THR:CB	2.64	0.44
1:A:853:ILE:HA	1:A:858:ARG:HD3	1.99	0.44
1:E:492:PHE:O	1:E:495:GLU:N	2.51	0.44
1:A:158:GLU:OE1	1:A:190:THR:HB	2.18	0.44
1:A:492:PHE:O	1:A:495:GLU:N	2.50	0.44
1:C:641:ARG:O	1:C:644:LYS:HG2	2.18	0.44
1:A:185:CYS:O	1:A:191:MET:HE2	2.16	0.44

Continued on next page...

Continued from previous page...

Atom-1	Atom-2	Interatomic distance (Å)	Clash overlap (Å)
1:C:492:PHE:O	1:C:495:GLU:N	2.50	0.44
1:D:730:CYS:SG	1:D:731:ARG:N	2.91	0.44
1:C:192:MET:CE	1:C:230:ILE:HG12	2.48	0.44
1:C:718:LEU:HD21	1:C:841:LEU:HD12	2.00	0.44
1:E:12:TRP:CE2	1:E:240:LEU:HD23	2.52	0.44
1:B:12:TRP:CE2	1:B:240:LEU:HD23	2.53	0.44
1:F:12:TRP:CE2	1:F:240:LEU:HD23	2.53	0.44
1:D:12:TRP:CE2	1:D:240:LEU:HD23	2.53	0.43
1:C:523:MET:HA	1:C:526:ILE:HD12	2.00	0.43
1:D:739:ARG:NH2	2:D:1001:PO4:O2	2.51	0.43
1:A:185:CYS:SG	1:A:188:THR:HG23	2.58	0.43
1:A:395:CYS:HB2	1:A:488:GLU:HA	1.99	0.43
1:C:192:MET:HE1	1:C:230:ILE:HA	1.96	0.43
1:B:188:THR:O	1:B:192:MET:HG2	2.17	0.43
1:B:476:TRP:CD1	1:B:476:TRP:N	2.87	0.43
1:E:493:LEU:HA	1:E:498:TRP:CD1	2.52	0.43
1:A:153:SER:HB3	1:A:156:VAL:HG23	2.01	0.43
1:D:468:LYS:CG	1:D:469:ALA:H	2.31	0.43
1:D:868:THR:O	1:D:872:VAL:HG23	2.19	0.43
1:A:662:VAL:HG22	1:A:667:CYS:HA	2.00	0.43
1:C:342:ILE:HD12	1:C:738:GLY:HA3	2.01	0.43
1:C:868:THR:O	1:C:872:VAL:HG23	2.19	0.43
1:E:175:ARG:N	1:E:176:PRO:CD	2.82	0.43
1:C:146:ASP:OD2	4:C:1003:SAH:HG1	2.19	0.43
1:C:153:SER:HB3	1:C:156:VAL:HG23	2.01	0.43
1:D:523:MET:HA	1:D:526:ILE:HD12	2.00	0.43
1:B:293:TRP:HZ3	1:B:594:ILE:HD13	1.84	0.43
1:F:401:ILE:O	1:F:404:VAL:HG12	2.19	0.42
1:C:293:TRP:HZ3	1:C:594:ILE:HD13	1.84	0.42
1:F:476:TRP:N	1:F:476:TRP:CD1	2.87	0.42
1:F:690:ARG:NH1	1:F:699:SER:OG	2.51	0.42
1:A:112:GLU:OE2	1:A:112:GLU:HA	2.19	0.42
1:A:261:SER:O	1:A:586:GLU:CG	2.65	0.42
1:B:443:HIS:CD2	1:B:448:CYS:SG	3.12	0.42
1:B:662:VAL:HG22	1:B:667:CYS:HA	2.00	0.42
1:D:476:TRP:N	1:D:476:TRP:CD1	2.87	0.42
1:E:94:ILE:O	1:E:97:VAL:HG22	2.20	0.42
1:A:12:TRP:CE2	1:A:240:LEU:HD23	2.54	0.42
1:B:153:SER:HB3	1:B:156:VAL:HG23	2.01	0.42
1:B:192:MET:CE	1:B:230:ILE:CG1	2.98	0.42
1:B:569:ILE:O	1:B:573:THR:CB	2.66	0.42

Continued on next page...

Continued from previous page...

Atom-1	Atom-2	Interatomic distance (Å)	Clash overlap (Å)
1:D:293:TRP:HE1	1:D:295:PHE:HE1	1.61	0.42
1:E:342:ILE:HD12	1:E:738:GLY:HA3	2.01	0.42
1:F:523:MET:HA	1:F:526:ILE:HD12	2.01	0.42
1:B:293:TRP:CZ3	1:B:594:ILE:HD13	2.54	0.42
1:D:271:GLU:OE2	1:D:545:ARG:NH2	2.53	0.42
1:D:468:LYS:CG	1:D:469:ALA:N	2.83	0.42
1:E:293:TRP:CH2	1:E:308:GLY:HA3	2.54	0.42
1:E:597:ARG:HH21	1:E:599:ASP:CG	2.22	0.42
1:E:629:GLU:OE1	1:E:675:ARG:NH1	2.53	0.42
1:F:261:SER:C	1:F:586:GLU:HG2	2.39	0.42
1:B:694:GLN:HB3	1:B:697:LYS:HB2	2.02	0.42
1:D:597:ARG:HH21	1:D:599:ASP:CG	2.23	0.42
1:F:597:ARG:HH21	1:F:599:ASP:CG	2.23	0.42
1:B:597:ARG:NH2	1:B:599:ASP:OD1	2.53	0.42
1:B:853:ILE:HA	1:B:858:ARG:HD3	2.01	0.42
1:D:158:GLU:HG3	1:D:191:MET:HG2	2.02	0.42
1:A:73:PRO:HG2	1:A:94:ILE:HD13	2.02	0.42
1:B:50:THR:HG21	1:B:588:GLY:HA2	2.01	0.42
1:E:868:THR:O	1:E:872:VAL:HG23	2.19	0.42
1:A:344:MET:HE2	1:A:461:LYS:HG2	2.02	0.42
1:C:853:ILE:HA	1:C:858:ARG:HD3	2.02	0.42
1:B:9:GLY:HA3	1:B:187:TYR:HB2	2.02	0.42
1:B:395:CYS:HB2	1:B:488:GLU:HA	2.02	0.42
1:B:581:VAL:CG1	1:B:582:LEU:N	2.83	0.42
1:D:180:CYS:HA	1:D:221:TRP:O	2.20	0.42
1:E:476:TRP:CD1	1:E:476:TRP:N	2.88	0.42
1:F:73:PRO:HG2	1:F:94:ILE:HD13	2.02	0.42
1:F:455:MET:HB2	1:F:476:TRP:HB3	2.02	0.42
1:B:718:LEU:HD21	1:B:841:LEU:HD12	2.01	0.41
1:C:43:ALA:O	1:C:47:GLY:N	2.51	0.41
1:C:94:ILE:O	1:C:97:VAL:HG22	2.20	0.41
1:C:250:PRO:HB3	1:F:95:ARG:HG3	2.03	0.41
1:C:324:GLY:N	1:D:155:GLU:OE1	2.53	0.41
1:B:455:MET:HB2	1:B:476:TRP:HB3	2.02	0.41
1:D:395:CYS:HB2	1:D:488:GLU:HA	2.01	0.41
1:F:9:GLY:HA3	1:F:187:TYR:HB2	2.02	0.41
1:A:597:ARG:HH21	1:A:599:ASP:CG	2.23	0.41
1:A:690:ARG:NH2	1:A:697:LYS:O	2.40	0.41
1:C:158:GLU:HG3	1:C:191:MET:HG2	2.01	0.41
1:D:455:MET:HB2	1:D:476:TRP:HB3	2.02	0.41
1:E:690:ARG:NH2	1:E:697:LYS:O	2.40	0.41

Continued on next page...

Continued from previous page...

Atom-1	Atom-2	Interatomic distance (Å)	Clash overlap (Å)
1:F:581:VAL:CG1	1:F:582:LEU:N	2.83	0.41
1:A:581:VAL:CG1	1:A:582:LEU:N	2.83	0.41
1:C:192:MET:HE3	1:C:230:ILE:CG1	2.50	0.41
1:C:293:TRP:CZ3	1:C:594:ILE:HD13	2.55	0.41
1:C:581:VAL:CG1	1:C:582:LEU:N	2.83	0.41
1:B:157:GLU:HB3	1:B:185:CYS:HB2	2.03	0.41
1:E:641:ARG:C	1:E:643:GLU:N	2.73	0.41
1:E:581:VAL:CG1	1:E:582:LEU:N	2.83	0.41
1:F:773:ASP:OD1	1:F:858:ARG:CZ	2.66	0.41
1:A:401:ILE:O	1:A:404:VAL:HG12	2.21	0.41
1:B:597:ARG:HH21	1:B:599:ASP:CG	2.24	0.41
1:B:690:ARG:NH2	1:B:697:LYS:O	2.42	0.41
1:A:262:GLY:CA	1:A:586:GLU:HG2	2.50	0.41
1:D:581:VAL:CG1	1:D:582:LEU:N	2.83	0.41
1:C:12:TRP:CE2	1:C:240:LEU:HD23	2.56	0.41
1:C:192:MET:HE3	1:C:230:ILE:HG13	2.02	0.41
1:C:690:ARG:NH2	1:C:697:LYS:O	2.39	0.41
1:D:64:TRP:CZ3	1:D:209:VAL:HG12	2.55	0.41
1:E:153:SER:HB3	1:E:156:VAL:HG23	2.02	0.41
1:E:523:MET:HA	1:E:526:ILE:HD12	2.02	0.41
1:A:172:LEU:HD23	1:A:176:PRO:HG3	2.02	0.41
1:A:342:ILE:HD12	1:A:738:GLY:HA3	2.03	0.41
1:A:523:MET:HA	1:A:526:ILE:HD12	2.03	0.41
1:B:715:PHE:CE2	1:B:729:PRO:HB3	2.56	0.41
1:F:7:THR:CG2	1:F:8:LEU:H	2.34	0.41
1:F:137:ALA:HA	1:F:171:TRP:CZ2	2.56	0.41
1:F:300:PRO:HG3	1:F:583:ARG:CD	2.51	0.41
1:F:468:LYS:CG	1:F:469:ALA:H	2.34	0.41
1:F:640:ARG:O	1:F:641:ARG:C	2.58	0.41
1:F:718:LEU:HD21	1:F:841:LEU:HD12	2.02	0.41
1:B:643:GLU:CD	1:B:643:GLU:H	2.24	0.41
1:F:35:VAL:HG23	1:F:37:ARG:HG2	2.02	0.41
1:F:208:ARG:HB2	1:F:219:MET:HG2	2.03	0.41
1:C:188:THR:O	1:C:192:MET:HG2	2.22	0.40
1:B:180:CYS:HA	1:B:221:TRP:O	2.21	0.40
1:F:468:LYS:CG	1:F:469:ALA:N	2.85	0.40
1:F:641:ARG:O	1:F:644:LYS:HG2	2.21	0.40
1:C:395:CYS:HB2	1:C:488:GLU:HA	2.03	0.40
1:E:64:TRP:CZ3	1:E:209:VAL:HG12	2.57	0.40
1:A:50:THR:HG21	1:A:588:GLY:HA2	2.02	0.40
1:D:715:PHE:CE2	1:D:729:PRO:HB3	2.56	0.40

Continued on next page...

Continued from previous page...

Atom-1	Atom-2	Interatomic distance (Å)	Clash overlap (Å)
1:D:871:MET:O	1:D:875:ILE:HG12	2.22	0.40
1:F:7:THR:HG22	1:F:8:LEU:H	1.85	0.40
1:F:43:ALA:O	1:F:47:GLY:N	2.50	0.40
1:C:643:GLU:CD	1:C:643:GLU:H	2.24	0.40
1:F:597:ARG:NH2	1:F:599:ASP:OD1	2.55	0.40
1:B:468:LYS:CG	1:B:469:ALA:H	2.35	0.40
1:E:146:ASP:OD2	4:E:1005:SAH:HG1	2.22	0.40

There are no symmetry-related clashes.

5.3 Torsion angles [i](#)

5.3.1 Protein backbone [i](#)

In the following table, the Percentiles column shows the percent Ramachandran outliers of the chain as a percentile score with respect to all X-ray entries followed by that with respect to entries of similar resolution.

The Analysed column shows the number of residues for which the backbone conformation was analysed, and the total number of residues.

Mol	Chain	Analysed	Favoured	Allowed	Outliers	Percentiles	
1	A	881/914 (96%)	826 (94%)	55 (6%)	0	100	100
1	B	881/914 (96%)	830 (94%)	51 (6%)	0	100	100
1	C	881/914 (96%)	830 (94%)	50 (6%)	1 (0%)	51	85
1	D	881/914 (96%)	833 (95%)	48 (5%)	0	100	100
1	E	881/914 (96%)	826 (94%)	54 (6%)	1 (0%)	51	85
1	F	881/914 (96%)	827 (94%)	54 (6%)	0	100	100
All	All	5286/5484 (96%)	4972 (94%)	312 (6%)	2 (0%)	100	100

All (2) Ramachandran outliers are listed below:

Mol	Chain	Res	Type
1	E	642	SER
1	C	300	PRO

5.3.2 Protein sidechains [i](#)

In the following table, the Percentiles column shows the percent sidechain outliers of the chain as a percentile score with respect to all X-ray entries followed by that with respect to entries of similar resolution.

The Analysed column shows the number of residues for which the sidechain conformation was analysed, and the total number of residues.

Mol	Chain	Analysed	Rotameric	Outliers	Percentiles	
1	A	756/779 (97%)	745 (98%)	11 (2%)	65	80
1	B	756/779 (97%)	744 (98%)	12 (2%)	62	79
1	C	756/779 (97%)	747 (99%)	9 (1%)	71	84
1	D	756/779 (97%)	743 (98%)	13 (2%)	60	78
1	E	756/779 (97%)	742 (98%)	14 (2%)	57	75
1	F	756/779 (97%)	745 (98%)	11 (2%)	65	80
All	All	4536/4674 (97%)	4466 (98%)	70 (2%)	65	80

All (70) residues with a non-rotameric sidechain are listed below:

Mol	Chain	Res	Type
1	A	238	GLN
1	A	317	SER
1	A	323	ASN
1	A	353	GLN
1	A	366	ASP
1	A	479	TRP
1	A	535	ASP
1	A	624	ASN
1	A	640	ARG
1	A	681	ARG
1	A	748	TRP
1	C	323	ASN
1	C	353	GLN
1	C	366	ASP
1	C	479	TRP
1	C	535	ASP
1	C	624	ASN
1	C	656	ARG
1	C	681	ARG
1	C	748	TRP
1	B	41	ARG
1	B	175	ARG

Continued on next page...

Continued from previous page...

Mol	Chain	Res	Type
1	B	317	SER
1	B	323	ASN
1	B	366	ASP
1	B	476	TRP
1	B	479	TRP
1	B	535	ASP
1	B	624	ASN
1	B	640	ARG
1	B	681	ARG
1	B	748	TRP
1	D	6	GLU
1	D	317	SER
1	D	323	ASN
1	D	366	ASP
1	D	476	TRP
1	D	479	TRP
1	D	535	ASP
1	D	624	ASN
1	D	640	ARG
1	D	641	ARG
1	D	644	LYS
1	D	681	ARG
1	D	748	TRP
1	E	155	GLU
1	E	175	ARG
1	E	301	TYR
1	E	317	SER
1	E	323	ASN
1	E	366	ASP
1	E	476	TRP
1	E	479	TRP
1	E	535	ASP
1	E	624	ASN
1	E	633	MET
1	E	640	ARG
1	E	681	ARG
1	E	748	TRP
1	F	238	GLN
1	F	301	TYR
1	F	317	SER
1	F	323	ASN
1	F	366	ASP

Continued on next page...

Continued from previous page...

Mol	Chain	Res	Type
1	F	476	TRP
1	F	479	TRP
1	F	535	ASP
1	F	624	ASN
1	F	681	ARG
1	F	748	TRP

Sometimes sidechains can be flipped to improve hydrogen bonding and reduce clashes. All (11) such sidechains are listed below:

Mol	Chain	Res	Type
1	A	299	HIS
1	A	353	GLN
1	A	550	ASN
1	A	616	ASN
1	C	110	HIS
1	C	616	ASN
1	B	616	ASN
1	D	647	ASN
1	E	299	HIS
1	F	110	HIS
1	F	353	GLN

5.3.3 RNA [i](#)

There are no RNA molecules in this entry.

5.4 Non-standard residues in protein, DNA, RNA chains [i](#)

There are no non-standard protein/DNA/RNA residues in this entry.

5.5 Carbohydrates [i](#)

There are no monosaccharides in this entry.

5.6 Ligand geometry [i](#)

Of 31 ligands modelled in this entry, 11 are monoatomic - leaving 20 for Mogul analysis.

In the following table, the Counts columns list the number of bonds (or angles) for which Mogul statistics could be retrieved, the number of bonds (or angles) that are observed in the model and the number of bonds (or angles) that are defined in the Chemical Component Dictionary. The Link column lists molecule types, if any, to which the group is linked. The Z score for a bond length (or angle) is the number of standard deviations the observed value is removed from the expected value. A bond length (or angle) with $|Z| > 2$ is considered an outlier worth inspection. RMSZ is the root-mean-square of all Z scores of the bond lengths (or angles).

Mol	Type	Chain	Res	Link	Bond lengths			Bond angles		
					Counts	RMSZ	# Z > 2	Counts	RMSZ	# Z > 2
2	PO4	C	1002	-	4,4,4	0.97	0	6,6,6	0.43	0
2	PO4	D	1001	-	4,4,4	1.00	0	6,6,6	0.41	0
4	SAH	C	1003	-	24,28,28	1.19	3 (12%)	25,40,40	1.67	5 (20%)
2	PO4	F	1003	-	4,4,4	0.98	0	6,6,6	0.41	0
2	PO4	B	1003	-	4,4,4	0.96	0	6,6,6	0.43	0
2	PO4	D	1002	-	4,4,4	0.96	0	6,6,6	0.43	0
2	PO4	A	1003	-	4,4,4	0.97	0	6,6,6	0.41	0
2	PO4	A	1002	-	4,4,4	0.92	0	6,6,6	0.43	0
2	PO4	E	1004	1	4,4,4	1.12	0	6,6,6	0.53	0
4	SAH	F	1004	-	24,28,28	1.18	3 (12%)	25,40,40	1.65	5 (20%)
2	PO4	A	1001	-	4,4,4	0.91	0	6,6,6	0.44	0
2	PO4	B	1001	-	4,4,4	0.91	0	6,6,6	0.44	0
2	PO4	B	1002	-	4,4,4	0.97	0	6,6,6	0.43	0
2	PO4	C	1001	-	4,4,4	0.91	0	6,6,6	0.44	0
2	PO4	E	1001	-	4,4,4	0.91	0	6,6,6	0.43	0
2	PO4	E	1003	-	4,4,4	0.95	0	6,6,6	0.43	0
2	PO4	E	1002	-	4,4,4	0.95	0	6,6,6	0.39	0
4	SAH	E	1005	-	24,28,28	1.19	3 (12%)	25,40,40	1.69	5 (20%)
2	PO4	F	1001	-	4,4,4	0.92	0	6,6,6	0.42	0
2	PO4	F	1002	-	4,4,4	0.96	0	6,6,6	0.40	0

In the following table, the Chirals column lists the number of chiral outliers, the number of chiral centers analysed, the number of these observed in the model and the number defined in the Chemical Component Dictionary. Similar counts are reported in the Torsion and Rings columns. '-' means no outliers of that kind were identified.

Mol	Type	Chain	Res	Link	Chirals	Torsions	Rings
4	SAH	F	1004	-	-	6/11/31/31	0/3/3/3
4	SAH	E	1005	-	-	2/11/31/31	0/3/3/3
4	SAH	C	1003	-	-	2/11/31/31	0/3/3/3

All (9) bond length outliers are listed below:

Mol	Chain	Res	Type	Atoms	Z	Observed(Å)	Ideal(Å)
4	E	1005	SAH	C2-N3	4.01	1.38	1.32
4	C	1003	SAH	C2-N3	3.94	1.38	1.32
4	F	1004	SAH	C2-N3	3.93	1.38	1.32
4	C	1003	SAH	C2-N1	2.43	1.38	1.33
4	E	1005	SAH	C2-N1	2.41	1.38	1.33
4	F	1004	SAH	C2-N1	2.39	1.38	1.33
4	E	1005	SAH	OXT-C	-2.17	1.23	1.30
4	C	1003	SAH	OXT-C	-2.12	1.23	1.30
4	F	1004	SAH	OXT-C	-2.10	1.23	1.30

All (15) bond angle outliers are listed below:

Mol	Chain	Res	Type	Atoms	Z	Observed(°)	Ideal(°)
4	C	1003	SAH	N3-C2-N1	-5.46	120.14	128.68
4	F	1004	SAH	N3-C2-N1	-5.44	120.18	128.68
4	E	1005	SAH	N3-C2-N1	-5.37	120.28	128.68
4	C	1003	SAH	C5'-SD-CG	-3.60	91.45	102.27
4	E	1005	SAH	C5'-SD-CG	-3.58	91.51	102.27
4	F	1004	SAH	C5'-SD-CG	-3.34	92.25	102.27
4	E	1005	SAH	C3'-C2'-C1'	3.02	105.53	100.98
4	C	1003	SAH	OXT-C-O	-2.74	117.86	124.09
4	E	1005	SAH	OXT-C-O	-2.73	117.88	124.09
4	F	1004	SAH	OXT-C-O	-2.71	117.93	124.09
4	C	1003	SAH	C3'-C2'-C1'	2.49	104.73	100.98
4	F	1004	SAH	C3'-C2'-C1'	2.35	104.52	100.98
4	E	1005	SAH	OXT-C-CA	2.22	120.95	113.38
4	C	1003	SAH	OXT-C-CA	2.12	120.62	113.38
4	F	1004	SAH	OXT-C-CA	2.07	120.42	113.38

There are no chirality outliers.

All (10) torsion outliers are listed below:

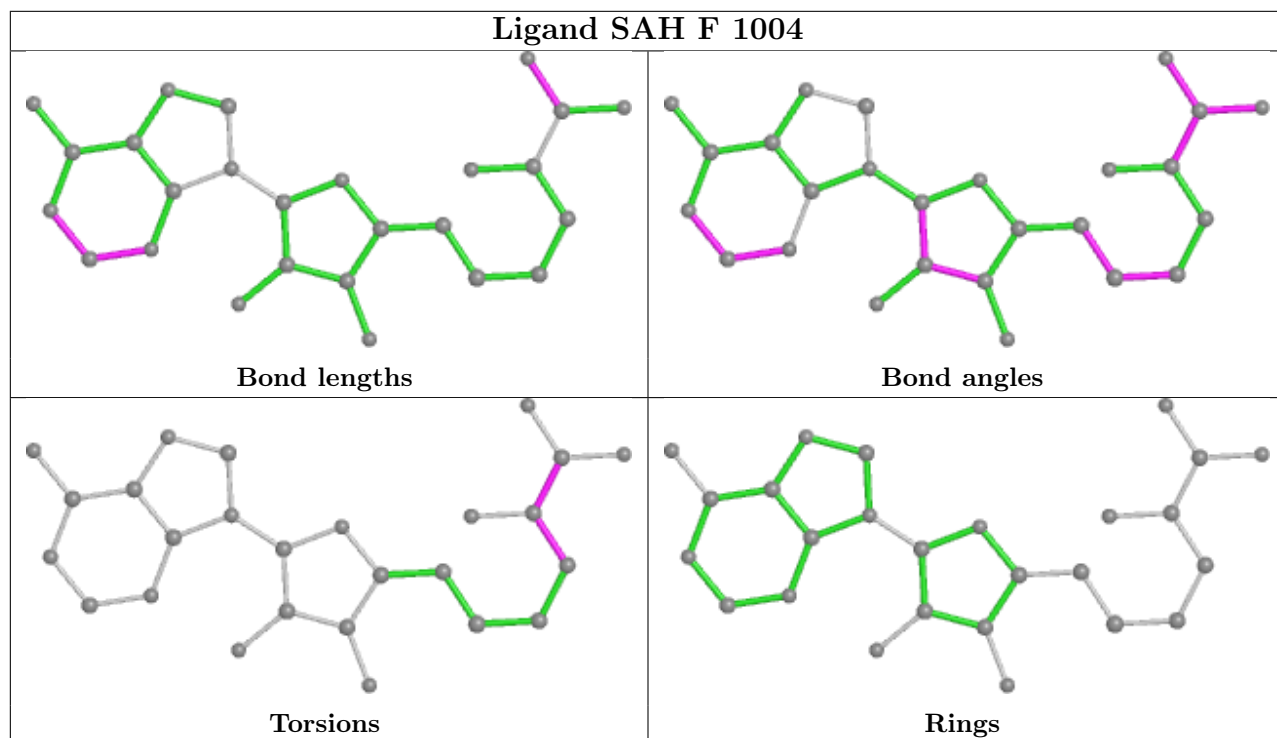
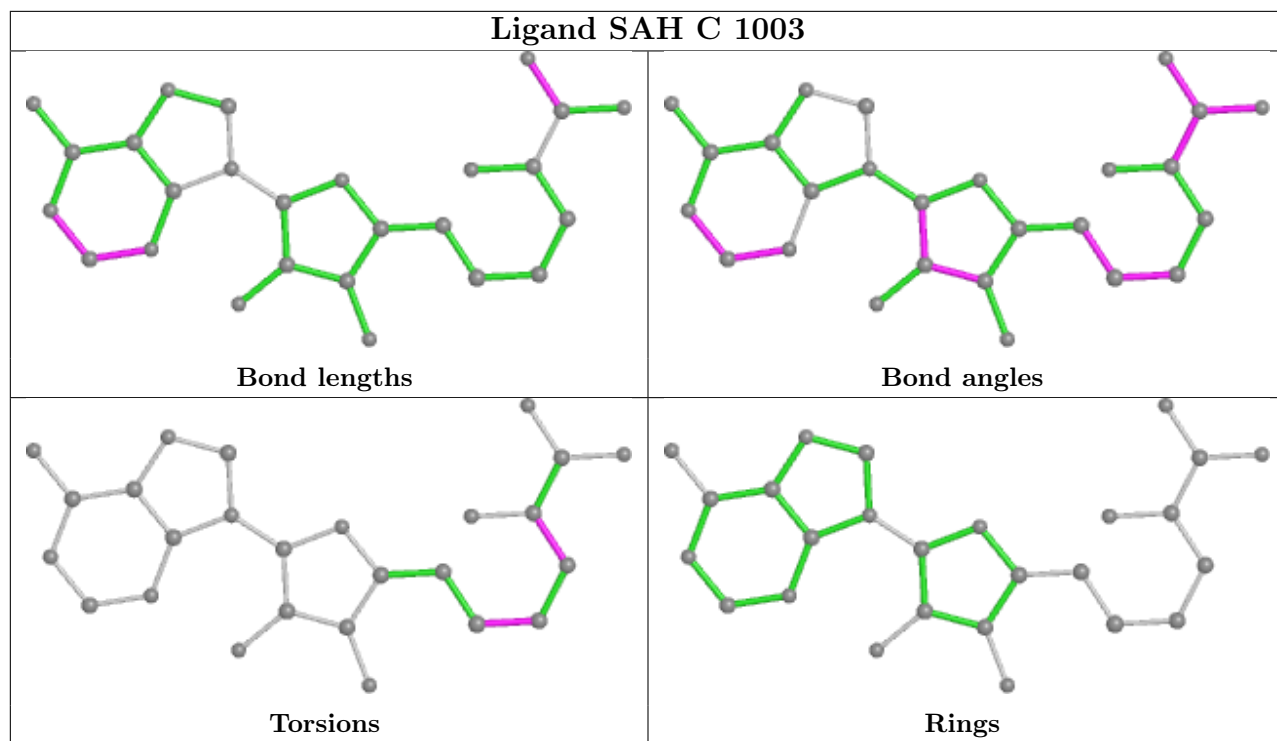
Mol	Chain	Res	Type	Atoms
4	C	1003	SAH	N-CA-CB-CG
4	E	1005	SAH	N-CA-CB-CG
4	F	1004	SAH	N-CA-CB-CG
4	F	1004	SAH	O-C-CA-N
4	F	1004	SAH	OXT-C-CA-N
4	F	1004	SAH	C-CA-CB-CG
4	F	1004	SAH	O-C-CA-CB
4	F	1004	SAH	OXT-C-CA-CB
4	E	1005	SAH	CB-CG-SD-C5'
4	C	1003	SAH	CB-CG-SD-C5'

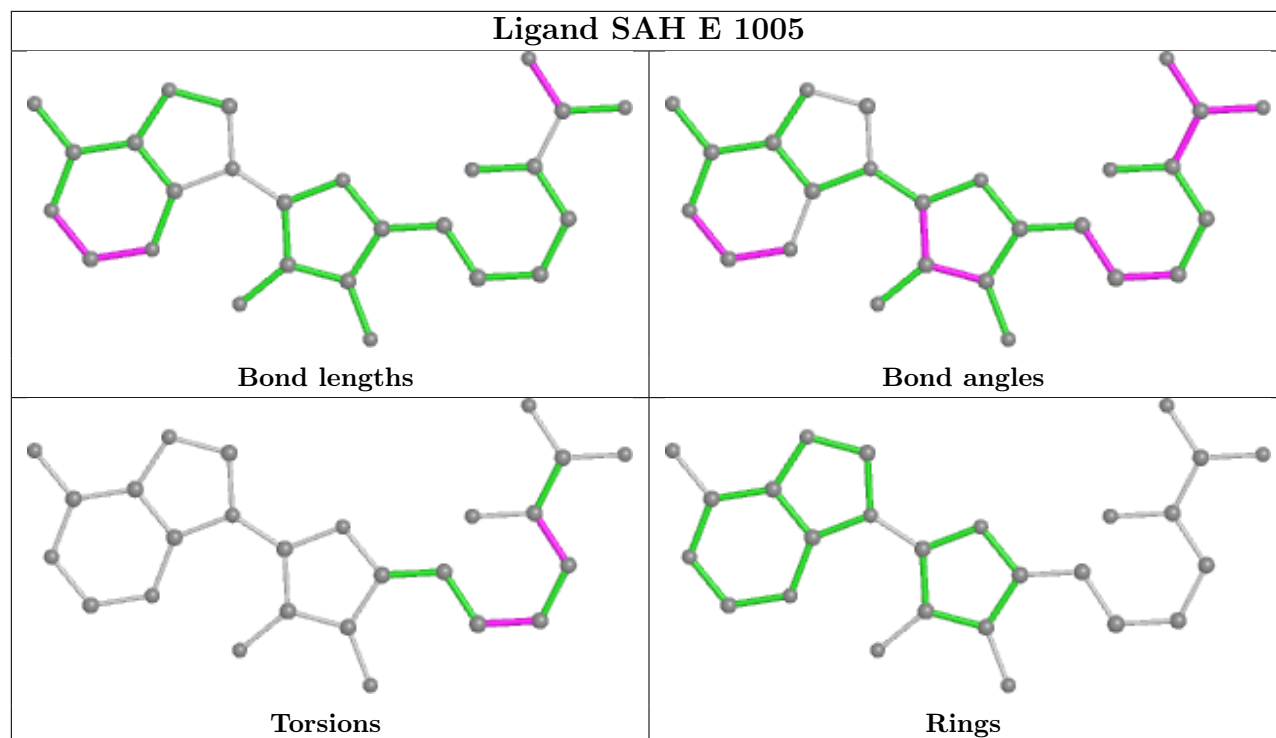
There are no ring outliers.

11 monomers are involved in 23 short contacts:

Mol	Chain	Res	Type	Clashes	Symm-Clashes
2	C	1002	PO4	2	0
2	D	1001	PO4	1	0
4	C	1003	SAH	3	0
2	F	1003	PO4	1	0
2	D	1002	PO4	2	0
2	A	1002	PO4	3	0
2	E	1004	PO4	1	0
4	F	1004	SAH	5	0
2	E	1003	PO4	1	0
4	E	1005	SAH	3	0
2	F	1002	PO4	1	0

The following is a two-dimensional graphical depiction of Mogul quality analysis of bond lengths, bond angles, torsion angles, and ring geometry for all instances of the Ligand of Interest. In addition, ligands with molecular weight > 250 and outliers as shown on the validation Tables will also be included. For torsion angles, if less than 5% of the Mogul distribution of torsion angles is within 10 degrees of the torsion angle in question, then that torsion angle is considered an outlier. Any bond that is central to one or more torsion angles identified as an outlier by Mogul will be highlighted in the graph. For rings, the root-mean-square deviation (RMSD) between the ring in question and similar rings identified by Mogul is calculated over all ring torsion angles. If the average RMSD is greater than 60 degrees and the minimal RMSD between the ring in question and any Mogul-identified rings is also greater than 60 degrees, then that ring is considered an outlier. The outliers are highlighted in purple. The color gray indicates Mogul did not find sufficient equivalents in the CSD to analyse the geometry.





5.7 Other polymers [i](#)

There are no such residues in this entry.

5.8 Polymer linkage issues [i](#)

There are no chain breaks in this entry.

6 Fit of model and data

6.1 Protein, DNA and RNA chains

In the following table, the column labelled ‘#RSRZ > 2’ contains the number (and percentage) of RSRZ outliers, followed by percent RSRZ outliers for the chain as percentile scores relative to all X-ray entries and entries of similar resolution. The OWAB column contains the minimum, median, 95th percentile and maximum values of the occupancy-weighted average B-factor per residue. The column labelled ‘Q < 0.9’ lists the number of (and percentage) of residues with an average occupancy less than 0.9.

Mol	Chain	Analysed	<RSRZ>	#RSRZ>2	OWAB(Å ²)	Q<0.9
1	A	883/914 (96%)	0.12	29 (3%) 46 38	206, 277, 336, 397	0
1	B	883/914 (96%)	0.29	40 (4%) 33 28	225, 302, 386, 447	0
1	C	883/914 (96%)	0.23	41 (4%) 32 28	191, 295, 391, 456	0
1	D	883/914 (96%)	0.18	29 (3%) 46 38	197, 287, 379, 475	0
1	E	883/914 (96%)	-0.09	7 (0%) 86 79	160, 219, 282, 410	0
1	F	883/914 (96%)	-0.08	3 (0%) 94 90	154, 223, 282, 350	0
All	All	5298/5484 (96%)	0.11	149 (2%) 53 43	154, 267, 369, 475	0

All (149) RSRZ outliers are listed below:

Mol	Chain	Res	Type	RSRZ
1	B	669	VAL	6.3
1	B	578	VAL	5.7
1	C	798	SER	5.6
1	D	827	GLU	4.7
1	B	703	ASP	4.6
1	B	670	LYS	4.3
1	C	416	GLU	4.3
1	B	416	GLU	4.3
1	D	665	ASP	4.1
1	E	417	GLU	3.9
1	A	416	GLU	3.8
1	D	603	SER	3.7
1	C	821	GLU	3.7
1	D	798	SER	3.7
1	B	579	VAL	3.7
1	C	804	GLU	3.6
1	D	84	ARG	3.6
1	C	799	ILE	3.5
1	D	669	VAL	3.5

Continued on next page...

Continued from previous page...

Mol	Chain	Res	Type	RSRZ
1	B	798	SER	3.5
1	B	452	VAL	3.4
1	A	670	LYS	3.4
1	C	670	LYS	3.4
1	A	54	ALA	3.4
1	D	301	TYR	3.3
1	D	794	ARG	3.3
1	C	716	ASN	3.3
1	B	765	GLN	3.3
1	E	827	GLU	3.3
1	C	717	LYS	3.2
1	D	668	VAL	3.2
1	A	798	SER	3.2
1	B	583	ARG	3.2
1	C	797	TRP	3.2
1	C	669	VAL	3.2
1	A	717	LYS	3.2
1	C	707	GLU	3.1
1	C	796	THR	3.1
1	B	530	ARG	3.1
1	D	416	GLU	3.1
1	C	841	LEU	3.1
1	C	630	VAL	3.0
1	B	54	ALA	3.0
1	D	797	TRP	3.0
1	A	797	TRP	3.0
1	C	668	VAL	2.9
1	C	603	SER	2.9
1	A	703	ASP	2.9
1	C	307	HIS	2.9
1	C	819	TRP	2.8
1	C	794	ARG	2.8
1	B	55	VAL	2.8
1	E	214	ASN	2.8
1	A	447	GLU	2.8
1	D	538	GLY	2.8
1	B	797	TRP	2.8
1	B	784	SER	2.7
1	E	412	ALA	2.7
1	B	311	GLU	2.7
1	D	271	GLU	2.7
1	C	708	VAL	2.7

Continued on next page...

Continued from previous page...

Mol	Chain	Res	Type	RSRZ
1	D	701	GLY	2.7
1	A	765	GLN	2.6
1	B	414	PHE	2.6
1	A	530	ARG	2.6
1	C	578	VAL	2.6
1	B	206	LEU	2.6
1	C	530	ARG	2.6
1	C	827	GLU	2.6
1	C	765	GLN	2.5
1	D	664	GLY	2.5
1	D	765	GLN	2.5
1	A	665	ASP	2.5
1	B	257	VAL	2.5
1	A	716	ASN	2.5
1	B	59	SER	2.5
1	A	669	VAL	2.5
1	C	291	GLU	2.5
1	E	583	ARG	2.5
1	A	532	TYR	2.4
1	B	100	VAL	2.4
1	A	531	MET	2.4
1	A	841	LEU	2.4
1	A	729	PRO	2.4
1	B	794	ARG	2.4
1	D	532	TYR	2.4
1	F	572	TYR	2.4
1	D	670	LYS	2.4
1	B	417	GLU	2.4
1	A	843	LYS	2.3
1	B	580	LYS	2.3
1	C	286	ARG	2.3
1	D	578	VAL	2.3
1	B	92	ALA	2.3
1	D	666	ASP	2.3
1	C	435	LEU	2.3
1	E	705	TRP	2.3
1	B	841	LEU	2.3
1	D	432	PHE	2.3
1	C	586	GLU	2.3
1	C	704	ASN	2.3
1	A	452	VAL	2.3
1	C	728	VAL	2.3

Continued on next page...

Continued from previous page...

Mol	Chain	Res	Type	RSRZ
1	A	853	ILE	2.3
1	B	34	GLU	2.3
1	B	263	THR	2.3
1	B	711	CYS	2.3
1	C	604	GLY	2.3
1	A	55	VAL	2.2
1	B	301	TYR	2.2
1	E	584	PRO	2.2
1	D	272	ALA	2.2
1	D	55	VAL	2.2
1	D	608	THR	2.2
1	A	772	ARG	2.2
1	D	54	ALA	2.2
1	D	719	HIS	2.2
1	A	407	ASN	2.2
1	A	529	GLY	2.2
1	B	671	PRO	2.2
1	D	436	VAL	2.2
1	B	796	THR	2.2
1	B	712	SER	2.2
1	C	706	GLU	2.2
1	B	413	ILE	2.2
1	B	53	HIS	2.1
1	C	292	THR	2.1
1	B	665	ASP	2.1
1	B	668	VAL	2.1
1	C	853	ILE	2.1
1	F	881	LYS	2.1
1	B	673	ASP	2.1
1	D	296	ASP	2.1
1	C	311	GLU	2.1
1	C	395	CYS	2.1
1	A	180	CYS	2.1
1	C	723	GLY	2.1
1	C	583	ARG	2.1
1	C	791	PRO	2.1
1	F	217	HIS	2.1
1	C	417	GLU	2.1
1	A	394	VAL	2.0
1	B	639	LEU	2.0
1	D	717	LYS	2.0
1	B	89	TYR	2.0

Continued on next page...

Continued from previous page...

Mol	Chain	Res	Type	RSRZ
1	A	799	ILE	2.0
1	A	127	LYS	2.0
1	C	712	SER	2.0
1	A	533	ALA	2.0

6.2 Non-standard residues in protein, DNA, RNA chains [i](#)

There are no non-standard protein/DNA/RNA residues in this entry.

6.3 Carbohydrates [i](#)

There are no monosaccharides in this entry.

6.4 Ligands [i](#)

In the following table, the Atoms column lists the number of modelled atoms in the group and the number defined in the chemical component dictionary. The B-factors column lists the minimum, median, 95th percentile and maximum values of B factors of atoms in the group. The column labelled 'Q< 0.9' lists the number of atoms with occupancy less than 0.9.

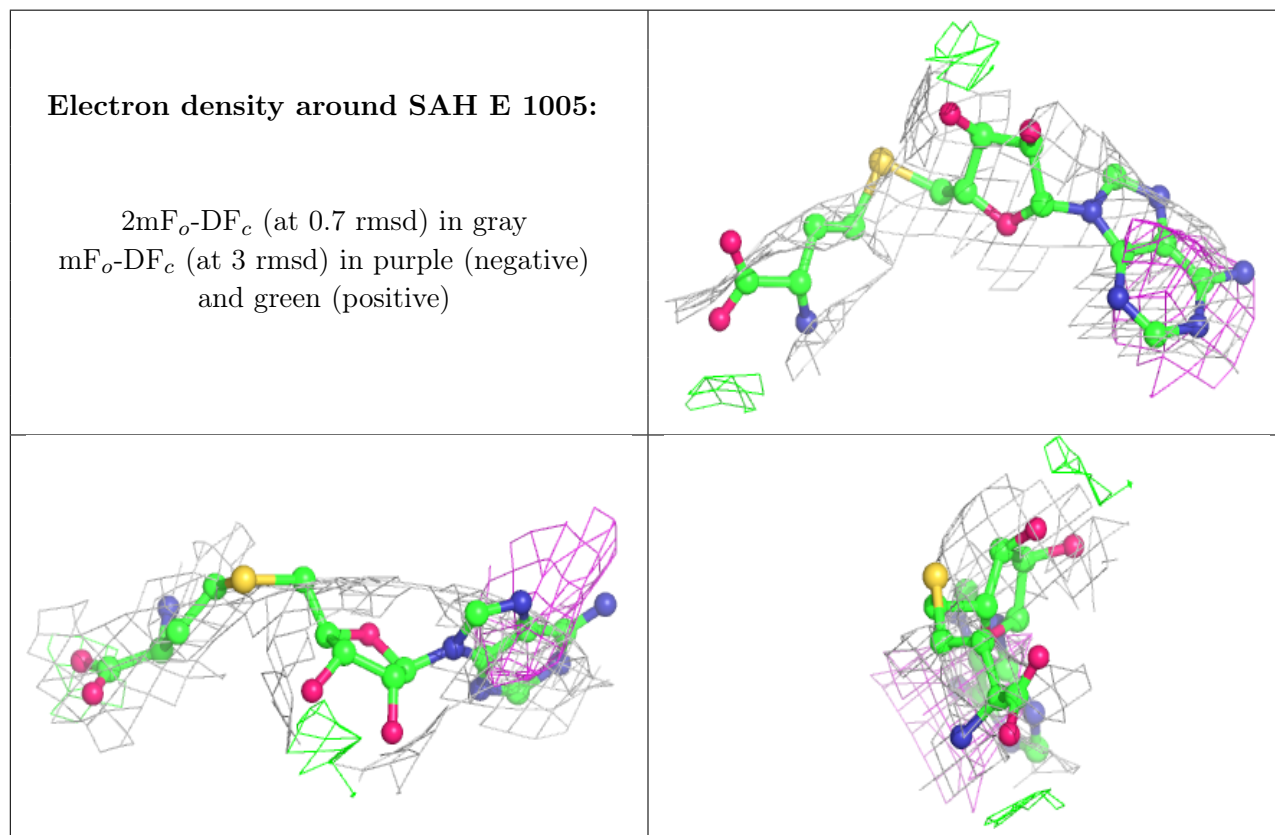
Mol	Type	Chain	Res	Atoms	RSCC	RSR	B-factors(Å ²)	Q<0.9
2	PO4	F	1003	5/5	0.41	0.75	277,280,294,357	0
2	PO4	D	1002	5/5	0.44	0.43	314,335,336,337	0
2	PO4	E	1004	5/5	0.45	0.89	267,271,298,305	0
2	PO4	C	1002	5/5	0.59	0.33	302,305,326,328	0
2	PO4	B	1003	5/5	0.61	0.30	317,323,334,334	0
2	PO4	F	1001	5/5	0.65	0.88	290,295,310,311	0
2	PO4	D	1001	5/5	0.67	1.78	287,296,312,317	0
3	ZN	B	1004	1/1	0.71	0.12	308,308,308,308	0
2	PO4	A	1003	5/5	0.72	1.29	292,292,318,326	0
4	SAH	E	1005	26/26	0.73	0.39	185,215,227,263	0
2	PO4	A	1001	5/5	0.74	0.69	313,313,317,320	0
4	SAH	F	1004	26/26	0.74	0.44	196,223,243,255	0
2	PO4	E	1003	5/5	0.76	0.40	242,251,299,302	0
2	PO4	A	1002	5/5	0.77	0.99	288,294,316,318	0
4	SAH	C	1003	26/26	0.77	0.54	227,254,263,286	0
2	PO4	B	1001	5/5	0.79	0.57	314,317,327,336	0
2	PO4	C	1001	5/5	0.79	0.36	274,282,287,301	0
2	PO4	E	1002	5/5	0.83	1.41	274,280,301,311	0
3	ZN	C	1004	1/1	0.84	0.20	302,302,302,302	0

Continued on next page...

Continued from previous page...

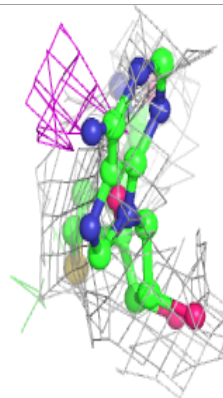
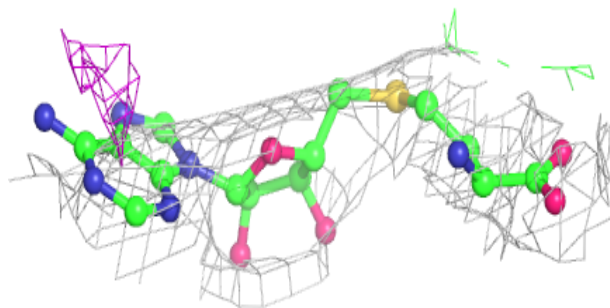
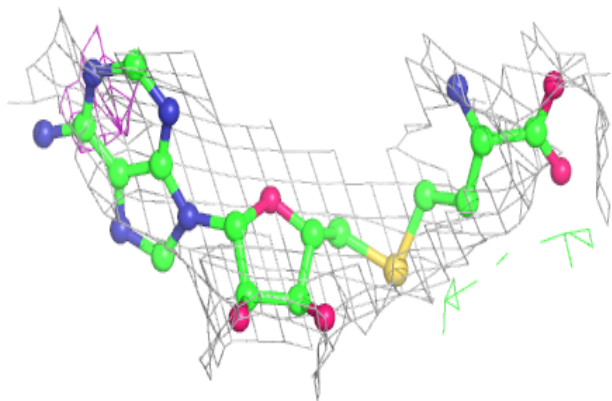
Mol	Type	Chain	Res	Atoms	RSCC	RSR	B-factors(Å ²)	Q<0.9
2	PO4	F	1002	5/5	0.84	1.29	240,270,304,316	0
3	ZN	F	1005	1/1	0.84	0.12	224,224,224,224	0
2	PO4	B	1002	5/5	0.85	1.96	270,274,283,310	0
2	PO4	E	1001	5/5	0.85	0.52	261,265,280,282	0
3	ZN	B	1005	1/1	0.93	0.26	393,393,393,393	0
3	ZN	A	1004	1/1	0.94	0.29	294,294,294,294	0
3	ZN	D	1003	1/1	0.94	0.17	291,291,291,291	0
3	ZN	F	1006	1/1	0.95	0.09	203,203,203,203	0
3	ZN	A	1005	1/1	0.96	0.07	257,257,257,257	0
3	ZN	E	1007	1/1	0.97	0.13	188,188,188,188	0
3	ZN	E	1006	1/1	0.97	0.26	174,174,174,174	0
3	ZN	D	1004	1/1	0.99	0.13	343,343,343,343	0

The following is a graphical depiction of the model fit to experimental electron density of all instances of the Ligand of Interest. In addition, ligands with molecular weight > 250 and outliers as shown on the geometry validation Tables will also be included. Each fit is shown from different orientation to approximate a three-dimensional view.

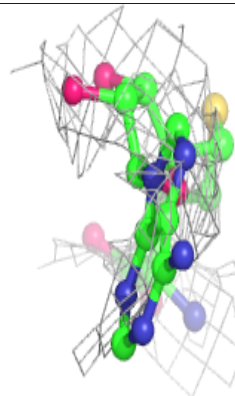
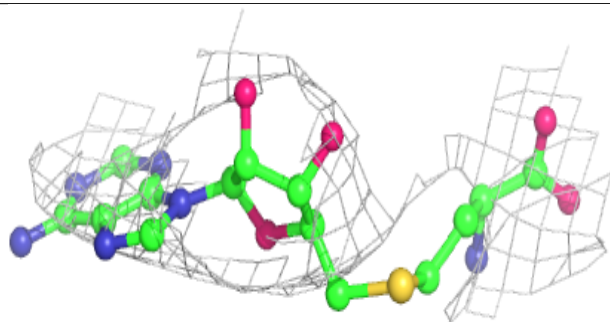
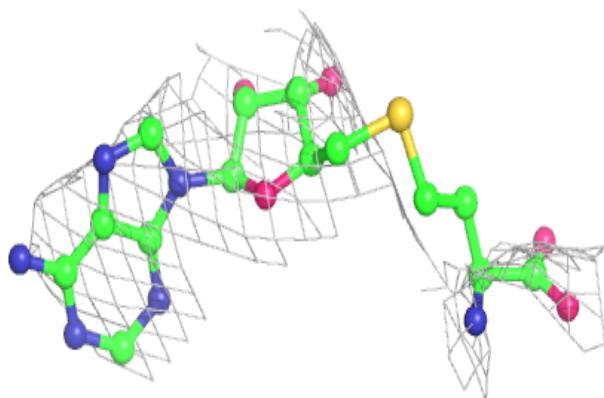


Electron density around SAH F 1004:

$2mF_o-DF_c$ (at 0.7 rmsd) in gray
 mF_o-DF_c (at 3 rmsd) in purple (negative)
and green (positive)

**Electron density around SAH C 1003:**

$2mF_o-DF_c$ (at 0.7 rmsd) in gray
 mF_o-DF_c (at 3 rmsd) in purple (negative)
and green (positive)



6.5 Other polymers [i](#)

There are no such residues in this entry.