



# Full wwPDB X-ray Structure Validation Report ⓘ

Jan 3, 2024 – 02:59 pm GMT

PDB ID : 5IED  
Title : Murine endoplasmic reticulum alpha-glucosidase II with castanospermine  
Authors : Caputo, A.T.; Roversi, P.; Alonzi, D.S.; Kiappes, J.L.; Zitzmann, N.  
Deposited on : 2016-02-25  
Resolution : 1.81 Å(reported)

This is a Full wwPDB X-ray Structure Validation Report for a publicly released PDB entry.

We welcome your comments at [validation@mail.wwpdb.org](mailto:validation@mail.wwpdb.org)

A user guide is available at

<https://www.wwpdb.org/validation/2017/XrayValidationReportHelp>

with specific help available everywhere you see the ⓘ symbol.

The types of validation reports are described at

<http://www.wwpdb.org/validation/2017/FAQs#types>.

---

The following versions of software and data (see [references ⓘ](#)) were used in the production of this report:

MolProbity : 4.02b-467  
Mogul : 1.8.4, CSD as541be (2020)  
Xtriage (Phenix) : 1.13  
EDS : 2.36  
buster-report : 1.1.7 (2018)  
Percentile statistics : 20191225.v01 (using entries in the PDB archive December 25th 2019)  
Refmac : 5.8.0158  
CCP4 : 7.0.044 (Gargrove)  
Ideal geometry (proteins) : Engh & Huber (2001)  
Ideal geometry (DNA, RNA) : Parkinson et al. (1996)  
Validation Pipeline (wwPDB-VP) : 2.36

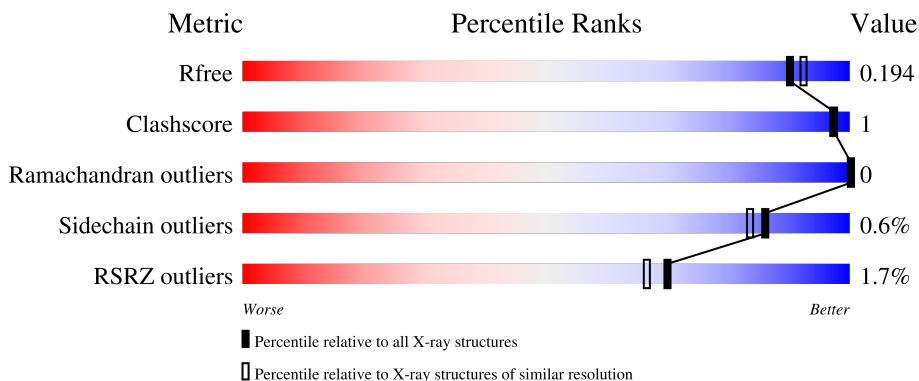
# 1 Overall quality at a glance

The following experimental techniques were used to determine the structure:

*X-RAY DIFFRACTION*

The reported resolution of this entry is 1.81 Å.

Percentile scores (ranging between 0-100) for global validation metrics of the entry are shown in the following graphic. The table shows the number of entries on which the scores are based.



Metric	Whole archive (#Entries)	Similar resolution (#Entries, resolution range(Å))
$R_{free}$	130704	7484 (1.84-1.80)
Clashscore	141614	8401 (1.84-1.80)
Ramachandran outliers	138981	8290 (1.84-1.80)
Sidechain outliers	138945	8290 (1.84-1.80)
RSRZ outliers	127900	7371 (1.84-1.80)

The table below summarises the geometric issues observed across the polymeric chains and their fit to the electron density. The red, orange, yellow and green segments of the lower bar indicate the fraction of residues that contain outliers for  $\geq 3$ , 2, 1 and 0 types of geometric quality criteria respectively. A grey segment represents the fraction of residues that are not modelled. The numeric value for each fraction is indicated below the corresponding segment, with a dot representing fractions  $\leq 5\%$ . The upper red bar (where present) indicates the fraction of residues that have poor fit to the electron density. The numeric value is given above the bar.

Mol	Chain	Length	Quality of chain
1	A	934	
2	B	88	
3	C	2	

The following table lists non-polymeric compounds, carbohydrate monomers and non-standard residues in protein, DNA, RNA chains that are outliers for geometric or electron-density-fit criteria:

Mol	Type	Chain	Res	Chirality	Geometry	Clashes	Electron density
7	FMT	A	1023	-	-	-	X

## 2 Entry composition [i](#)

There are 10 unique types of molecules in this entry. The entry contains 16278 atoms, of which 7545 are hydrogens and 0 are deuteriums.

In the tables below, the ZeroOcc column contains the number of atoms modelled with zero occupancy, the AltConf column contains the number of residues with at least one atom in alternate conformation and the Trace column contains the number of residues modelled with at most 2 atoms.

- Molecule 1 is a protein called Neutral alpha-glucosidase AB.

Mol	Chain	Residues	Atoms						ZeroOcc	AltConf	Trace
			Total	C	H	N	O	S			
1	A	857	13717	4469	6744	1204	1270	30	0	13	0

- Molecule 2 is a protein called Glucosidase 2 subunit beta.

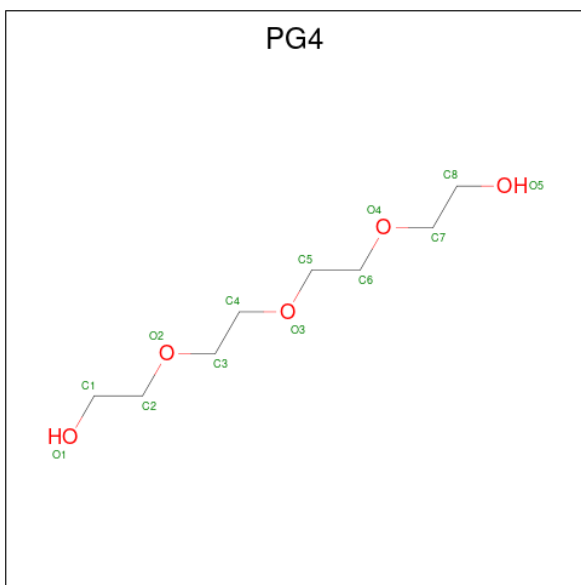
Mol	Chain	Residues	Atoms						ZeroOcc	AltConf	Trace
			Total	C	H	N	O	S			
2	B	88	1231	399	568	106	148	10	0	0	0

- Molecule 3 is an oligosaccharide called 2-acetamido-2-deoxy-beta-D-glucopyranose-(1-4)-2-acetamido-2-deoxy-beta-D-glucopyranose.



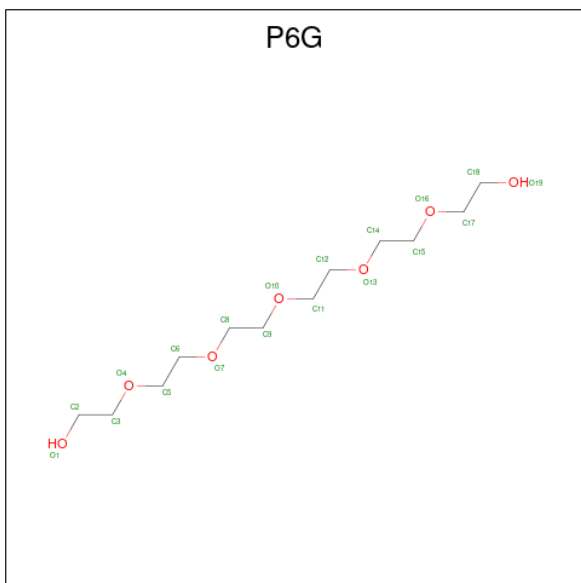
Mol	Chain	Residues	Atoms					ZeroOcc	AltConf	Trace
			Total	C	H	N	O			
3	C	2	53	16	25	2	10	0	0	0

- Molecule 4 is TETRAETHYLENE GLYCOL (three-letter code: PG4) (formula: C<sub>8</sub>H<sub>18</sub>O<sub>5</sub>).



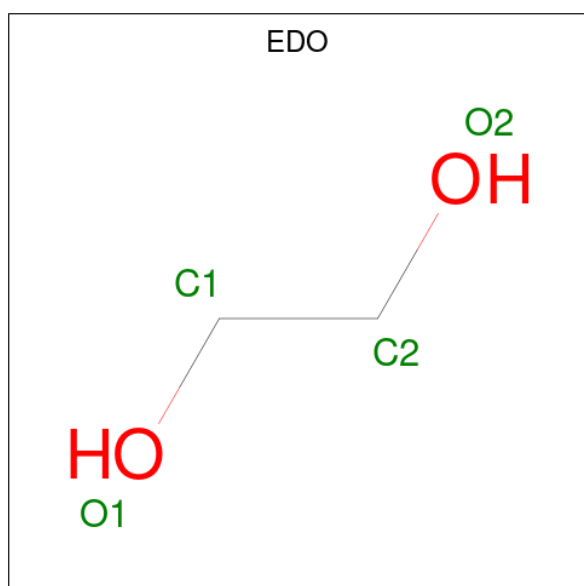
Mol	Chain	Residues	Atoms				ZeroOcc	AltConf
			Total	C	H	O		
4	A	1	31	8	18	5	0	0
4	A	1	17	5	9	3	0	0
4	A	1	20	6	11	3	0	0
4	B	1	17	6	8	3	0	0

- Molecule 5 is HEXAETHYLENE GLYCOL (three-letter code: P6G) (formula:  $C_{12}H_{26}O_7$ ).



Mol	Chain	Residues	Atoms				ZeroOcc	AltConf
			Total	C	H	O		
5	A	1	45	12	26	7	0	0
5	A	1	45	12	26	7	0	0
5	A	1	30	9	16	5	0	0
5	B	1	45	12	26	7	0	0

- Molecule 6 is 1,2-ETHANEDIOL (three-letter code: EDO) (formula: C<sub>2</sub>H<sub>6</sub>O<sub>2</sub>).



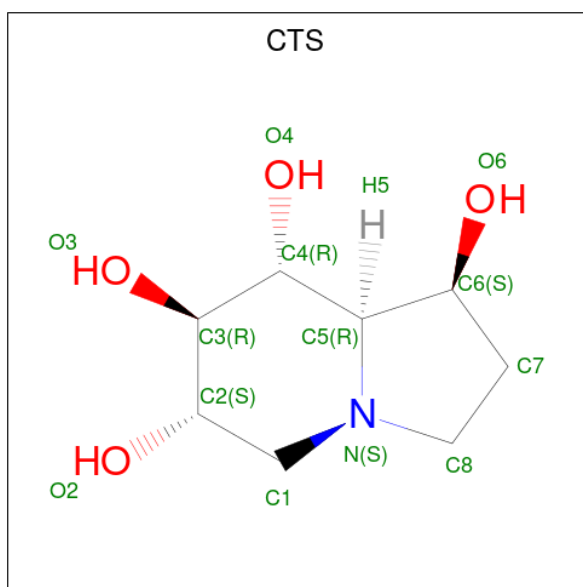
Mol	Chain	Residues	Atoms				ZeroOcc	AltConf
			Total	C	H	O		
6	A	1	10	2	6	2	0	0
6	A	1	10	2	6	2	0	0
6	A	1	10	2	6	2	0	0
6	A	1	10	2	6	2	0	0
6	A	1	10	2	6	2	0	0
6	B	1	10	2	6	2	0	0

- Molecule 7 is FORMIC ACID (three-letter code: FMT) (formula: CH<sub>2</sub>O<sub>2</sub>).



Mol	Chain	Residues	Atoms				ZeroOcc	AltConf
7	A	1	Total	C	H	O	0	0
			4	1	1	2		
7	A	1	Total	C	H	O	0	0
			5	1	2	2		
7	A	1	Total	C	H	O	0	0
			4	1	1	2		
7	A	1	Total	C	H	O	0	0
			4	1	1	2		
7	A	1	Total	C	H	O	0	0
			5	1	2	2		
7	A	1	Total	C	H	O	0	0
			4	1	1	2		
7	A	1	Total	C	H	O	0	0
			5	1	2	2		
7	A	1	Total	C	H	O	0	0
			5	1	2	2		
7	B	1	Total	C	H	O	0	0
			4	1	1	2		

- Molecule 8 is CASTANOSPERMINE (three-letter code: CTS) (formula: C<sub>8</sub>H<sub>15</sub>NO<sub>4</sub>).



Mol	Chain	Residues	Atoms				ZeroOcc	AltConf	
8	A	1	Total	C	H	N	O	0	0
			28	8	15	1	4		

- Molecule 9 is CALCIUM ION (three-letter code: CA) (formula: Ca).

Mol	Chain	Residues	Atoms		ZeroOcc	AltConf
9	B	2	Total	Ca	0	0
			2	2		

- Molecule 10 is water.

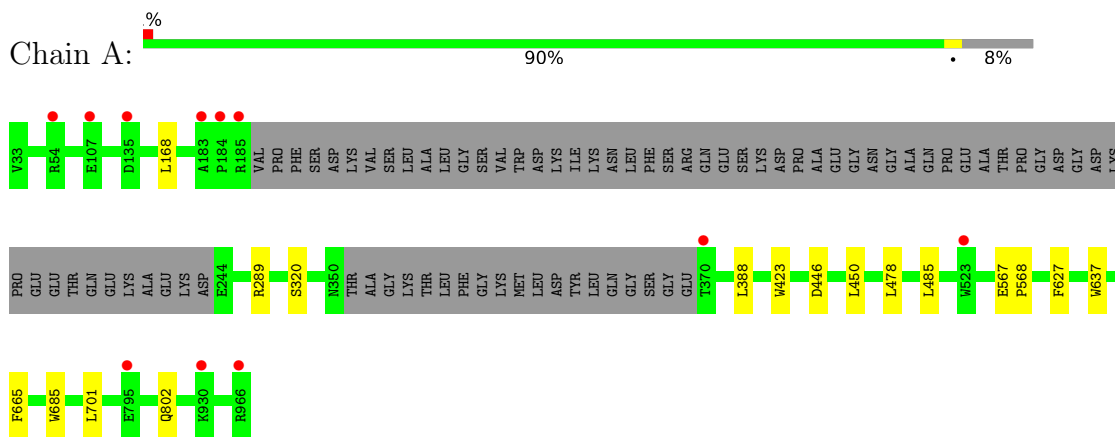
Mol	Chain	Residues	Atoms		ZeroOcc	AltConf
10	A	790	Total	O	0	0
			790	790		
10	B	94	Total	O	0	0
			94	94		



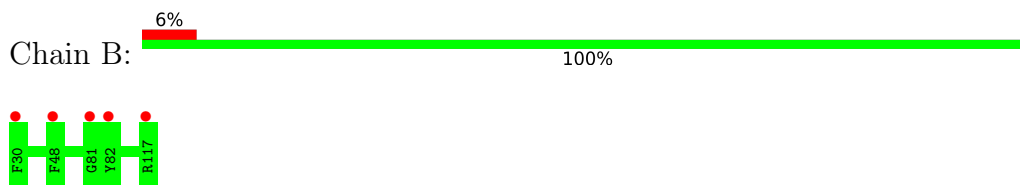
### 3 Residue-property plots [i](#)

These plots are drawn for all protein, RNA, DNA and oligosaccharide chains in the entry. The first graphic for a chain summarises the proportions of the various outlier classes displayed in the second graphic. The second graphic shows the sequence view annotated by issues in geometry and electron density. Residues are color-coded according to the number of geometric quality criteria for which they contain at least one outlier: green = 0, yellow = 1, orange = 2 and red = 3 or more. A red dot above a residue indicates a poor fit to the electron density ( $RSRZ > 2$ ). Stretches of 2 or more consecutive residues without any outlier are shown as a green connector. Residues present in the sample, but not in the model, are shown in grey.

- Molecule 1: Neutral alpha-glucosidase AB



- Molecule 2: Glucosidase 2 subunit beta



- Molecule 3: 2-acetamido-2-deoxy-beta-D-glucopyranose-(1-4)-2-acetamido-2-deoxy-beta-D-glucopyranose



## 4 Data and refinement statistics

Property	Value	Source
Space group	P 21 21 2	Depositor
Cell constants a, b, c, $\alpha$ , $\beta$ , $\gamma$	103.43Å 173.90Å 63.04Å 90.00° 90.00° 90.00°	Depositor
Resolution (Å)	86.95 – 1.81 86.95 – 1.81	Depositor EDS
% Data completeness (in resolution range)	99.5 (86.95-1.81) 99.9 (86.95-1.81)	Depositor EDS
$R_{merge}$	(Not available)	Depositor
$R_{sym}$	0.19	Depositor
$\langle I/\sigma(I) \rangle$ <sup>1</sup>	1.51 (at 1.81Å)	Xtrriage
Refinement program	BUSTER 2.10.2	Depositor
R, $R_{free}$	0.159 , 0.184 0.169 , 0.194	Depositor DCC
$R_{free}$ test set	5133 reflections (4.95%)	wwPDB-VP
Wilson B-factor (Å <sup>2</sup> )	22.6	Xtrriage
Anisotropy	0.096	Xtrriage
Bulk solvent $k_{sol}$ (e/Å <sup>3</sup> ), $B_{sol}$ (Å <sup>2</sup> )	0.42 , 61.1	EDS
L-test for twinning <sup>2</sup>	$\langle  L  \rangle = 0.49$ , $\langle L^2 \rangle = 0.32$	Xtrriage
Estimated twinning fraction	No twinning to report.	Xtrriage
$F_o, F_c$ correlation	0.97	EDS
Total number of atoms	16278	wwPDB-VP
Average B, all atoms (Å <sup>2</sup> )	28.0	wwPDB-VP

Xtrriage's analysis on translational NCS is as follows: *The largest off-origin peak in the Patterson function is 3.34% of the height of the origin peak. No significant pseudotranslation is detected.*

<sup>1</sup>Intensities estimated from amplitudes.

<sup>2</sup>Theoretical values of  $\langle |L| \rangle$ ,  $\langle L^2 \rangle$  for acentric reflections are 0.5, 0.333 respectively for untwinned datasets, and 0.375, 0.2 for perfectly twinned datasets.

## 5 Model quality [i](#)

### 5.1 Standard geometry [i](#)

Bond lengths and bond angles in the following residue types are not validated in this section: CA, CTS, PG4, FMT, EDO, NAG, P6G

The Z score for a bond length (or angle) is the number of standard deviations the observed value is removed from the expected value. A bond length (or angle) with  $|Z| > 5$  is considered an outlier worth inspection. RMSZ is the root-mean-square of all Z scores of the bond lengths (or angles).

Mol	Chain	Bond lengths		Bond angles	
		RMSZ	# Z  >5	RMSZ	# Z  >5
1	A	0.50	0/7229	0.67	0/9837
2	B	0.49	0/677	0.64	0/920
All	All	0.50	0/7906	0.67	0/10757

There are no bond length outliers.

There are no bond angle outliers.

There are no chirality outliers.

There are no planarity outliers.

### 5.2 Too-close contacts [i](#)

In the following table, the Non-H and H(model) columns list the number of non-hydrogen atoms and hydrogen atoms in the chain respectively. The H(added) column lists the number of hydrogen atoms added and optimized by MolProbity. The Clashes column lists the number of clashes within the asymmetric unit, whereas Symm-Clashes lists symmetry-related clashes.

Mol	Chain	Non-H	H(model)	H(added)	Clashes	Symm-Clashes
1	A	6973	6744	6745	12	0
2	B	663	568	568	0	0
3	C	28	25	25	0	0
4	A	30	38	38	0	0
4	B	9	8	8	0	0
5	A	52	68	68	0	0
5	B	19	26	26	0	0
6	A	20	30	30	3	0
6	B	4	6	6	0	0
7	A	33	16	16	0	0
7	B	3	1	1	0	0

*Continued on next page...*

Continued from previous page...

Mol	Chain	Non-H	H(model)	H(added)	Clashes	Symm-Clashes
8	A	13	15	15	0	0
9	B	2	0	0	0	0
10	A	790	0	0	0	0
10	B	94	0	0	0	0
All	All	8733	7545	7546	12	0

The all-atom clashscore is defined as the number of clashes found per 1000 atoms (including hydrogen atoms). The all-atom clashscore for this structure is 1.

All (12) close contacts within the same asymmetric unit are listed below, sorted by their clash magnitude.

Atom-1	Atom-2	Interatomic distance (Å)	Clash overlap (Å)
1:A:802:GLN:HG3	6:A:1011:EDO:C2	2.35	0.57
1:A:168:LEU:HD11	1:A:388:LEU:HD13	1.88	0.55
1:A:478:LEU:HD13	1:A:485[A]:LEU:HG	1.90	0.53
1:A:320:SER:O	1:A:627:PHE:HA	2.11	0.51
1:A:802:GLN:CG	6:A:1011:EDO:H22	2.41	0.50
1:A:450:LEU:HD12	1:A:485[B]:LEU:HD21	1.94	0.49
1:A:450:LEU:CD1	1:A:485[B]:LEU:HD21	2.45	0.47
1:A:478:LEU:HD13	1:A:485[A]:LEU:CG	2.47	0.44
1:A:567:GLU:N	1:A:568:PRO:HA	2.33	0.43
1:A:478:LEU:CD1	1:A:485[A]:LEU:HD21	2.49	0.42
1:A:802:GLN:HG3	6:A:1011:EDO:H21	2.02	0.42
1:A:423:TRP:O	1:A:701:LEU:HA	2.21	0.40

There are no symmetry-related clashes.

## 5.3 Torsion angles [i](#)

### 5.3.1 Protein backbone [i](#)

In the following table, the Percentiles column shows the percent Ramachandran outliers of the chain as a percentile score with respect to all X-ray entries followed by that with respect to entries of similar resolution.

The Analysed column shows the number of residues for which the backbone conformation was analysed, and the total number of residues.

Mol	Chain	Analysed	Favoured	Allowed	Outliers	Percentiles
1	A	864/934 (92%)	839 (97%)	25 (3%)	0	<b>100</b> <b>100</b>

Continued on next page...

*Continued from previous page...*

Mol	Chain	Analysed	Favoured	Allowed	Outliers	Percentiles	
2	B	86/88 (98%)	84 (98%)	2 (2%)	0	100	100
All	All	950/1022 (93%)	923 (97%)	27 (3%)	0	100	100

There are no Ramachandran outliers to report.

### 5.3.2 Protein sidechains [i](#)

In the following table, the Percentiles column shows the percent sidechain outliers of the chain as a percentile score with respect to all X-ray entries followed by that with respect to entries of similar resolution.

The Analysed column shows the number of residues for which the sidechain conformation was analysed, and the total number of residues.

Mol	Chain	Analysed	Rotameric	Outliers	Percentiles	
1	A	761/810 (94%)	756 (99%)	5 (1%)	84	80
2	B	77/77 (100%)	77 (100%)	0	100	100
All	All	838/887 (94%)	833 (99%)	5 (1%)	86	83

All (5) residues with a non-rotameric sidechain are listed below:

Mol	Chain	Res	Type
1	A	289	ARG
1	A	446	ASP
1	A	637	TRP
1	A	665	PHE
1	A	685	TRP

Sometimes sidechains can be flipped to improve hydrogen bonding and reduce clashes. There are no such sidechains identified.

### 5.3.3 RNA [i](#)

There are no RNA molecules in this entry.

## 5.4 Non-standard residues in protein, DNA, RNA chains [i](#)

There are no non-standard protein/DNA/RNA residues in this entry.

## 5.5 Carbohydrates

2 monosaccharides are modelled in this entry.

In the following table, the Counts columns list the number of bonds (or angles) for which Mogul statistics could be retrieved, the number of bonds (or angles) that are observed in the model and the number of bonds (or angles) that are defined in the Chemical Component Dictionary. The Link column lists molecule types, if any, to which the group is linked. The Z score for a bond length (or angle) is the number of standard deviations the observed value is removed from the expected value. A bond length (or angle) with  $|Z| > 2$  is considered an outlier worth inspection. RMSZ is the root-mean-square of all Z scores of the bond lengths (or angles).

Mol	Type	Chain	Res	Link	Bond lengths			Bond angles		
					Counts	RMSZ	# Z  > 2	Counts	RMSZ	# Z  > 2
3	NAG	C	1	1,3	14,14,15	0.32	0	17,19,21	0.72	0
3	NAG	C	2	3	14,14,15	0.32	0	17,19,21	0.55	0

In the following table, the Chirals column lists the number of chiral outliers, the number of chiral centers analysed, the number of these observed in the model and the number defined in the Chemical Component Dictionary. Similar counts are reported in the Torsion and Rings columns. '-' means no outliers of that kind were identified.

Mol	Type	Chain	Res	Link	Chirals	Torsions	Rings
3	NAG	C	1	1,3	-	0/6/23/26	0/1/1/1
3	NAG	C	2	3	-	1/6/23/26	0/1/1/1

There are no bond length outliers.

There are no bond angle outliers.

There are no chirality outliers.

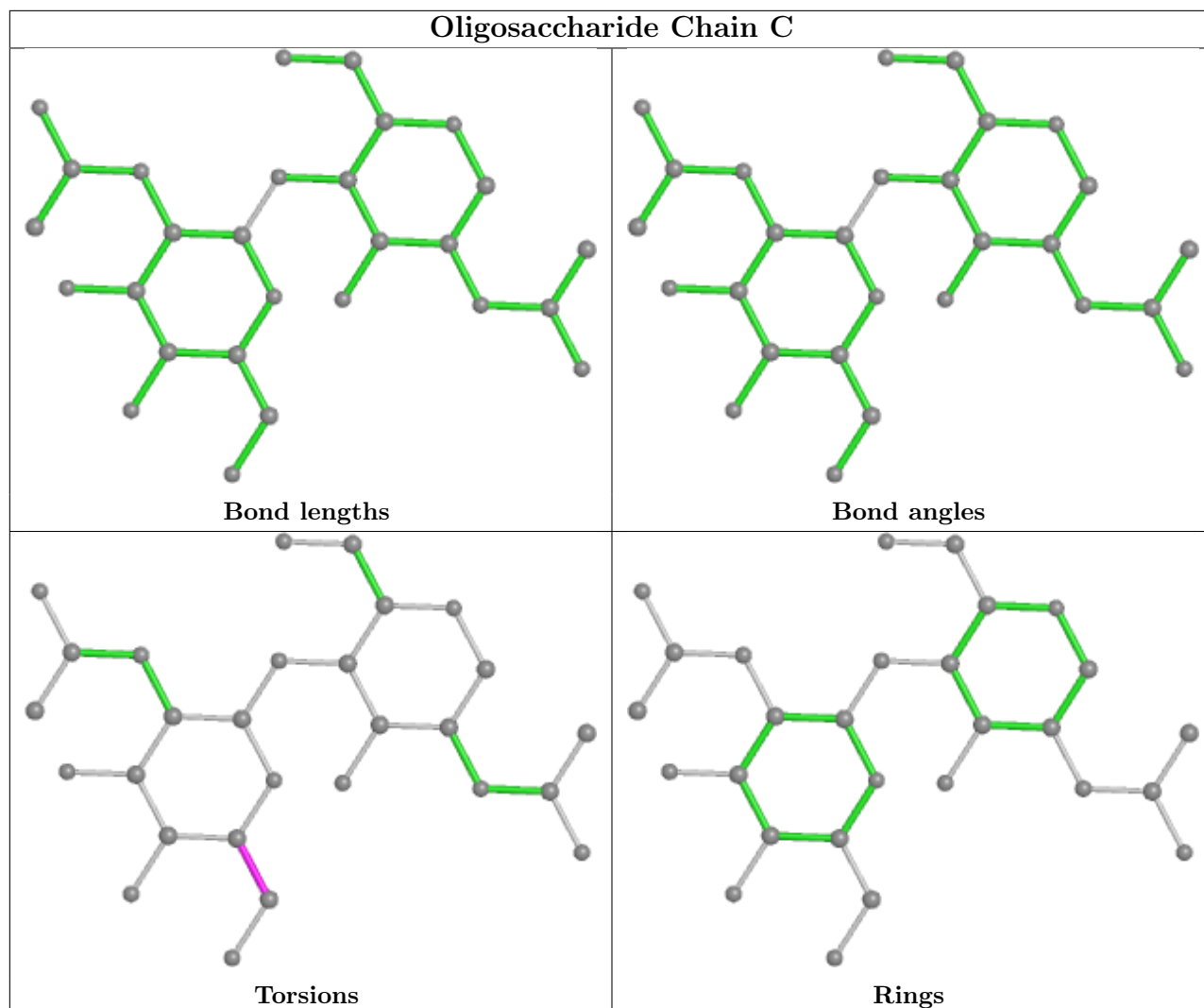
All (1) torsion outliers are listed below:

Mol	Chain	Res	Type	Atoms
3	C	2	NAG	C4-C5-C6-O6

There are no ring outliers.

No monomer is involved in short contacts.

The following is a two-dimensional graphical depiction of Mogul quality analysis of bond lengths, bond angles, torsion angles, and ring geometry for oligosaccharide.



## 5.6 Ligand geometry [i](#)

Of 29 ligands modelled in this entry, 2 are monoatomic - leaving 27 for Mogul analysis.

In the following table, the Counts columns list the number of bonds (or angles) for which Mogul statistics could be retrieved, the number of bonds (or angles) that are observed in the model and the number of bonds (or angles) that are defined in the Chemical Component Dictionary. The Link column lists molecule types, if any, to which the group is linked. The Z score for a bond length (or angle) is the number of standard deviations the observed value is removed from the expected value. A bond length (or angle) with  $|Z| > 2$  is considered an outlier worth inspection. RMSZ is the root-mean-square of all Z scores of the bond lengths (or angles).

Mol	Type	Chain	Res	Link	Bond lengths			Bond angles		
					Counts	RMSZ	$\# Z  > 2$	Counts	RMSZ	$\# Z  > 2$
6	EDO	A	1009	-	3,3,3	0.54	0	2,2,2	0.38	0
5	P6G	A	1006	-	18,18,18	0.23	0	17,17,17	0.49	0
7	FMT	A	1021	-	2,2,2	1.17	0	1,1,1	1.09	0
4	PG4	A	1003	-	12,12,12	0.18	0	11,11,11	0.17	0

Mol	Type	Chain	Res	Link	Bond lengths			Bond angles		
					Counts	RMSZ	# Z  > 2	Counts	RMSZ	# Z  > 2
7	FMT	A	1017	-	2,2,2	2.04	1 (50%)	1,1,1	1.17	0
7	FMT	A	1022	-	2,2,2	1.05	0	1,1,1	1.11	0
6	EDO	A	1013	-	3,3,3	0.92	0	2,2,2	0.09	0
7	FMT	A	1020	-	2,2,2	1.18	0	1,1,1	1.13	0
7	FMT	A	1018	-	2,2,2	1.21	0	1,1,1	1.09	0
7	FMT	A	1019	-	2,2,2	1.96	1 (50%)	1,1,1	1.17	0
6	EDO	A	1010	-	3,3,3	0.57	0	2,2,2	0.35	0
4	PG4	B	203	-	8,8,12	0.27	0	7,7,11	0.29	0
7	FMT	A	1023	-	2,2,2	0.86	0	1,1,1	1.20	0
4	PG4	A	1004	-	7,7,12	0.19	0	6,6,11	0.16	0
6	EDO	A	1012	-	3,3,3	0.49	0	2,2,2	0.27	0
4	PG4	A	1005	-	8,8,12	0.24	0	7,7,11	0.28	0
8	CTS	A	1025	-	14,14,14	0.32	0	16,21,21	0.72	0
5	P6G	B	204	-	18,18,18	0.15	0	17,17,17	0.48	0
5	P6G	A	1008	-	13,13,18	0.14	0	12,12,17	0.29	0
7	FMT	A	1016	-	2,2,2	1.14	0	1,1,1	1.09	0
7	FMT	A	1024	-	2,2,2	1.51	0	1,1,1	1.06	0
7	FMT	A	1014	-	2,2,2	0.89	0	1,1,1	1.52	0
7	FMT	A	1015	-	2,2,2	1.51	1 (50%)	1,1,1	1.03	0
6	EDO	B	205	-	3,3,3	0.52	0	2,2,2	0.37	0
7	FMT	B	206	-	2,2,2	1.12	0	1,1,1	1.18	0
6	EDO	A	1011	-	3,3,3	0.34	0	2,2,2	0.86	0
5	P6G	A	1007	-	18,18,18	0.13	0	17,17,17	0.23	0

In the following table, the Chirals column lists the number of chiral outliers, the number of chiral centers analysed, the number of these observed in the model and the number defined in the Chemical Component Dictionary. Similar counts are reported in the Torsion and Rings columns. '-' means no outliers of that kind were identified.

Mol	Type	Chain	Res	Link	Chirals	Torsions	Rings
6	EDO	A	1009	-	-	1/1/1/1	-
5	P6G	A	1006	-	-	9/16/16/16	-
4	PG4	A	1004	-	-	0/5/5/10	-
6	EDO	A	1012	-	-	1/1/1/1	-
4	PG4	A	1005	-	-	2/6/6/10	-
8	CTS	A	1025	-	-	-	0/2/2/2
5	P6G	B	204	-	-	5/16/16/16	-
6	EDO	B	205	-	-	1/1/1/1	-
5	P6G	A	1008	-	-	2/11/11/16	-
6	EDO	A	1010	-	-	0/1/1/1	-
4	PG4	A	1003	-	-	4/10/10/10	-

Continued on next page...



*Continued from previous page...*

Mol	Type	Chain	Res	Link	Chirals	Torsions	Rings
6	EDO	A	1011	-	-	1/1/1/1	-
4	PG4	B	203	-	-	4/6/6/10	-
5	P6G	A	1007	-	-	0/16/16/16	-
6	EDO	A	1013	-	-	1/1/1/1	-

All (3) bond length outliers are listed below:

Mol	Chain	Res	Type	Atoms	Z	Observed(Å)	Ideal(Å)
7	A	1019	FMT	O1-C	2.59	1.35	1.22
7	A	1017	FMT	O1-C	2.48	1.35	1.22
7	A	1015	FMT	O2-C	2.11	1.39	1.28

There are no bond angle outliers.

There are no chirality outliers.

All (31) torsion outliers are listed below:

Mol	Chain	Res	Type	Atoms
5	A	1006	P6G	C18-C17-O16-C15
5	A	1006	P6G	O4-C5-C6-O7
4	A	1003	PG4	O3-C5-C6-O4
5	B	204	P6G	O1-C2-C3-O4
6	A	1011	EDO	O1-C1-C2-O2
6	B	205	EDO	O1-C1-C2-O2
4	B	203	PG4	O3-C5-C6-O4
5	B	204	P6G	C14-C15-O16-C17
5	A	1006	P6G	O1-C2-C3-O4
4	B	203	PG4	C5-C6-O4-C7
4	A	1005	PG4	O1-C1-C2-O2
5	A	1006	P6G	O10-C11-C12-O13
5	B	204	P6G	C9-C8-O7-C6
5	A	1006	P6G	C12-C11-O10-C9
4	A	1003	PG4	C5-C6-O4-C7
5	A	1006	P6G	O7-C8-C9-O10
4	B	203	PG4	O2-C3-C4-O3
5	A	1006	P6G	C8-C9-O10-C11
5	A	1008	P6G	O13-C14-C15-O16
6	A	1013	EDO	O1-C1-C2-O2
5	A	1006	P6G	O16-C17-C18-O19
5	B	204	P6G	C18-C17-O16-C15
4	B	203	PG4	C3-C4-O3-C5
4	A	1005	PG4	C6-C5-O3-C4

*Continued on next page...*

Continued from previous page...

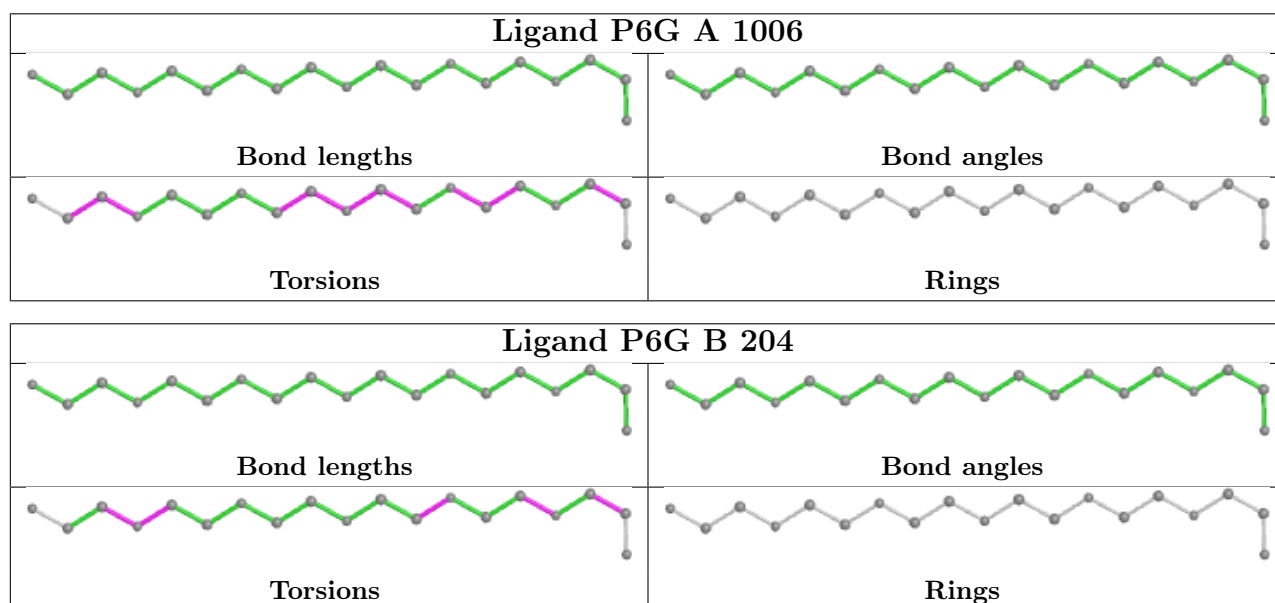
Mol	Chain	Res	Type	Atoms
5	B	204	P6G	C6-C5-O4-C3
4	A	1003	PG4	O4-C7-C8-O5
5	A	1008	P6G	C5-C6-O7-C8
6	A	1009	EDO	O1-C1-C2-O2
6	A	1012	EDO	O1-C1-C2-O2
5	A	1006	P6G	C5-C6-O7-C8
4	A	1003	PG4	O1-C1-C2-O2

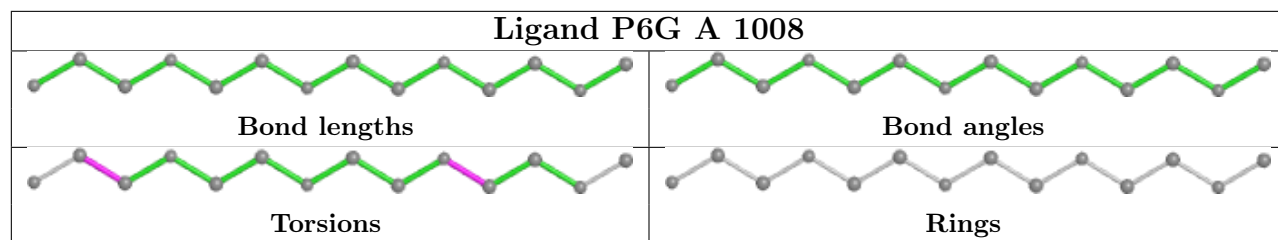
There are no ring outliers.

1 monomer is involved in 3 short contacts:

Mol	Chain	Res	Type	Clashes	Symm-Clashes
6	A	1011	EDO	3	0

The following is a two-dimensional graphical depiction of Mogul quality analysis of bond lengths, bond angles, torsion angles, and ring geometry for all instances of the Ligand of Interest. In addition, ligands with molecular weight > 250 and outliers as shown on the validation Tables will also be included. For torsion angles, if less than 5% of the Mogul distribution of torsion angles is within 10 degrees of the torsion angle in question, then that torsion angle is considered an outlier. Any bond that is central to one or more torsion angles identified as an outlier by Mogul will be highlighted in the graph. For rings, the root-mean-square deviation (RMSD) between the ring in question and similar rings identified by Mogul is calculated over all ring torsion angles. If the average RMSD is greater than 60 degrees and the minimal RMSD between the ring in question and any Mogul-identified rings is also greater than 60 degrees, then that ring is considered an outlier. The outliers are highlighted in purple. The color gray indicates Mogul did not find sufficient equivalents in the CSD to analyse the geometry.





## 5.7 Other polymers [i](#)

There are no such residues in this entry.

## 5.8 Polymer linkage issues [i](#)

There are no chain breaks in this entry.

## 6 Fit of model and data [i](#)

### 6.1 Protein, DNA and RNA chains [i](#)

In the following table, the column labelled ‘#RSRZ > 2’ contains the number (and percentage) of RSRZ outliers, followed by percent RSRZ outliers for the chain as percentile scores relative to all X-ray entries and entries of similar resolution. The OWAB column contains the minimum, median, 95<sup>th</sup> percentile and maximum values of the occupancy-weighted average B-factor per residue. The column labelled ‘Q < 0.9’ lists the number of (and percentage) of residues with an average occupancy less than 0.9.

Mol	Chain	Analysed	<RSRZ>	#RSRZ>2	OWAB(Å <sup>2</sup> )	Q<0.9
1	A	857/934 (91%)	-0.24	11 (1%) 77 74	15, 23, 45, 83	0
2	B	88/88 (100%)	0.36	5 (5%) 23 19	20, 32, 59, 80	0
All	All	945/1022 (92%)	-0.19	16 (1%) 70 66	15, 23, 49, 83	0

All (16) RSRZ outliers are listed below:

Mol	Chain	Res	Type	RSRZ
2	B	30	PHE	6.8
1	A	185	ARG	4.1
2	B	81	GLY	3.8
1	A	523	TRP	3.7
1	A	370	THR	3.7
2	B	48	PHE	3.2
2	B	117	ARG	3.2
1	A	184	PRO	3.2
1	A	183	ALA	2.7
1	A	107	GLU	2.4
1	A	135	ASP	2.4
1	A	795	GLU	2.3
1	A	54	ARG	2.2
1	A	930	LYS	2.2
2	B	82	TYR	2.1
1	A	966	ARG	2.1

### 6.2 Non-standard residues in protein, DNA, RNA chains [i](#)

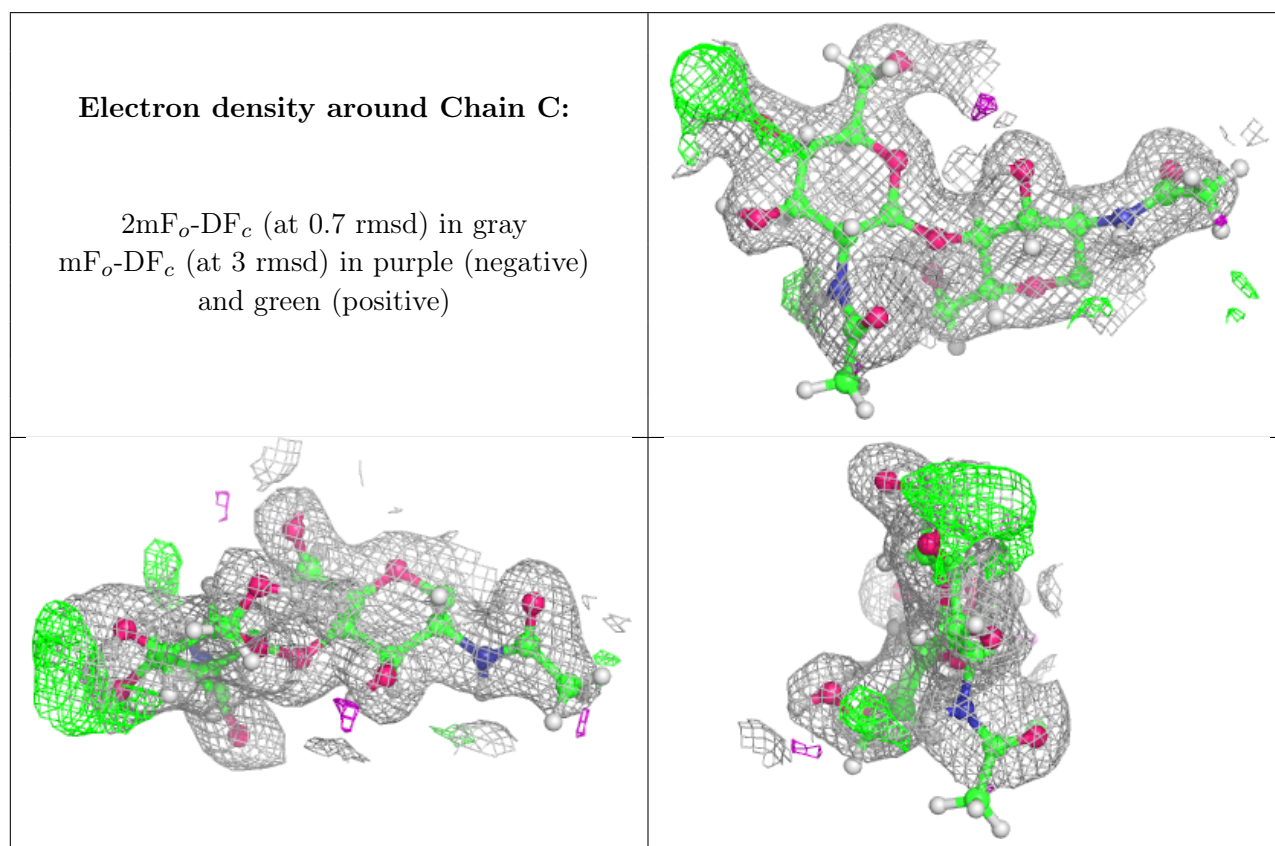
There are no non-standard protein/DNA/RNA residues in this entry.

### 6.3 Carbohydrates [i](#)

In the following table, the Atoms column lists the number of modelled atoms in the group and the number defined in the chemical component dictionary. The B-factors column lists the minimum, median, 95<sup>th</sup> percentile and maximum values of B factors of atoms in the group. The column labelled 'Q< 0.9' lists the number of atoms with occupancy less than 0.9.

Mol	Type	Chain	Res	Atoms	RSCC	RSR	B-factors(Å <sup>2</sup> )	Q<0.9
3	NAG	C	2	14/15	0.83	0.14	36,43,47,48	0
3	NAG	C	1	14/15	0.97	0.08	25,29,31,33	0

The following is a graphical depiction of the model fit to experimental electron density for oligosaccharide. Each fit is shown from different orientation to approximate a three-dimensional view.



### 6.4 Ligands [i](#)

In the following table, the Atoms column lists the number of modelled atoms in the group and the number defined in the chemical component dictionary. The B-factors column lists the minimum, median, 95<sup>th</sup> percentile and maximum values of B factors of atoms in the group. The column labelled 'Q< 0.9' lists the number of atoms with occupancy less than 0.9.

Mol	Type	Chain	Res	Atoms	RSCC	RSR	B-factors(Å <sup>2</sup> )	Q<0.9
4	PG4	A	1005	9/13	0.47	0.34	59,68,71,71	0

*Continued on next page...*

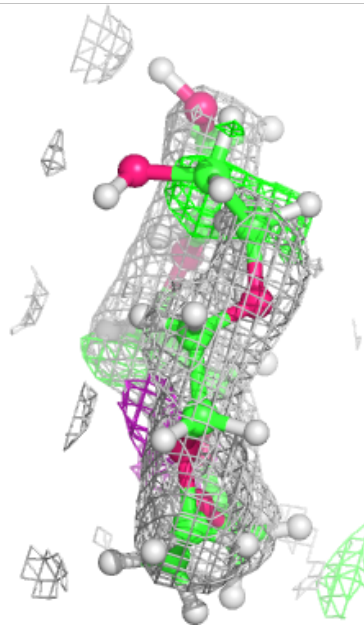
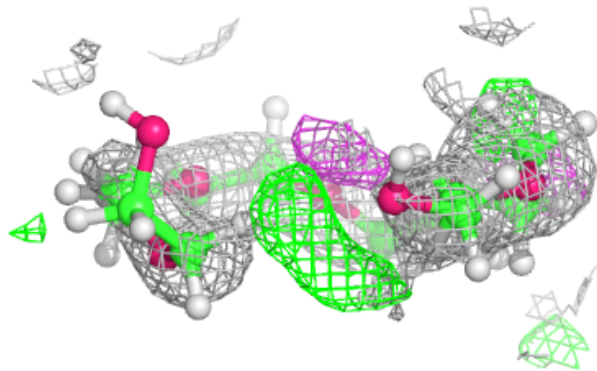
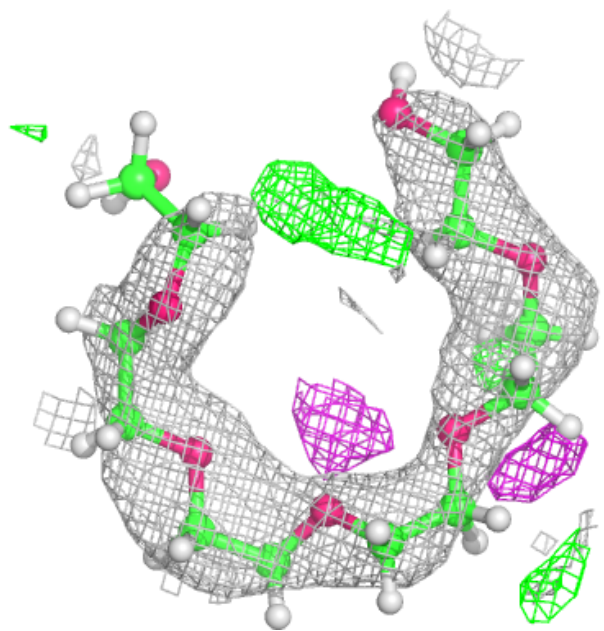
Continued from previous page...

Mol	Type	Chain	Res	Atoms	RSCC	RSR	B-factors(Å <sup>2</sup> )	Q<0.9
7	FMT	A	1020	3/3	0.49	0.20	88,88,89,90	0
6	EDO	A	1013	4/4	0.54	0.28	51,51,52,52	0
6	EDO	A	1009	4/4	0.57	0.35	64,68,72,72	0
4	PG4	A	1003	13/13	0.69	0.30	63,70,71,71	0
6	EDO	A	1012	4/4	0.69	0.25	51,54,65,65	0
6	EDO	A	1010	4/4	0.71	0.21	51,57,61,61	0
7	FMT	A	1023	3/3	0.71	0.48	101,102,102,102	0
7	FMT	A	1018	3/3	0.75	0.13	61,62,62,62	0
4	PG4	B	203	9/13	0.76	0.18	48,58,66,66	0
7	FMT	A	1024	3/3	0.76	0.23	35,43,45,46	0
5	P6G	A	1006	19/19	0.79	0.23	52,58,70,73	0
7	FMT	A	1021	3/3	0.81	0.21	64,65,65,65	0
5	P6G	B	204	19/19	0.81	0.30	49,57,74,75	0
7	FMT	A	1015	3/3	0.81	0.34	44,45,50,50	0
6	EDO	B	205	4/4	0.83	0.15	55,57,58,58	0
7	FMT	A	1016	3/3	0.84	0.21	45,49,49,51	0
7	FMT	A	1019	3/3	0.85	0.39	57,57,57,57	0
6	EDO	A	1011	4/4	0.86	0.35	41,41,50,51	0
5	P6G	A	1007	19/19	0.88	0.16	41,48,56,57	0
5	P6G	A	1008	14/19	0.89	0.14	38,43,59,59	0
4	PG4	A	1004	8/13	0.90	0.11	40,43,52,55	0
7	FMT	A	1022	3/3	0.91	0.17	65,66,66,66	0
7	FMT	A	1017	3/3	0.92	0.23	68,68,69,69	0
7	FMT	B	206	3/3	0.93	0.09	54,55,55,55	0
7	FMT	A	1014	3/3	0.94	0.24	25,27,35,35	0
8	CTS	A	1025	13/13	0.97	0.09	15,17,20,20	0
9	CA	B	201	1/1	0.99	0.10	24,24,24,24	0
9	CA	B	202	1/1	1.00	0.13	20,20,20,20	0

The following is a graphical depiction of the model fit to experimental electron density of all instances of the Ligand of Interest. In addition, ligands with molecular weight > 250 and outliers as shown on the geometry validation Tables will also be included. Each fit is shown from different orientation to approximate a three-dimensional view.

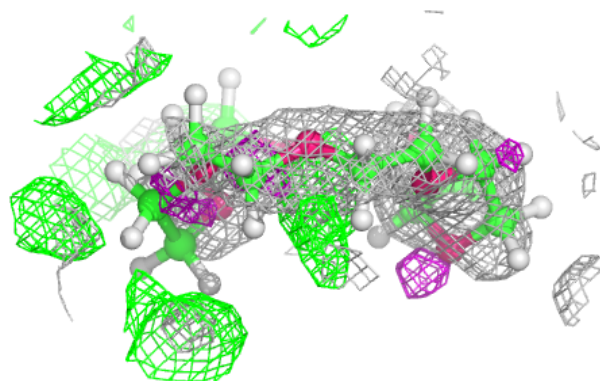
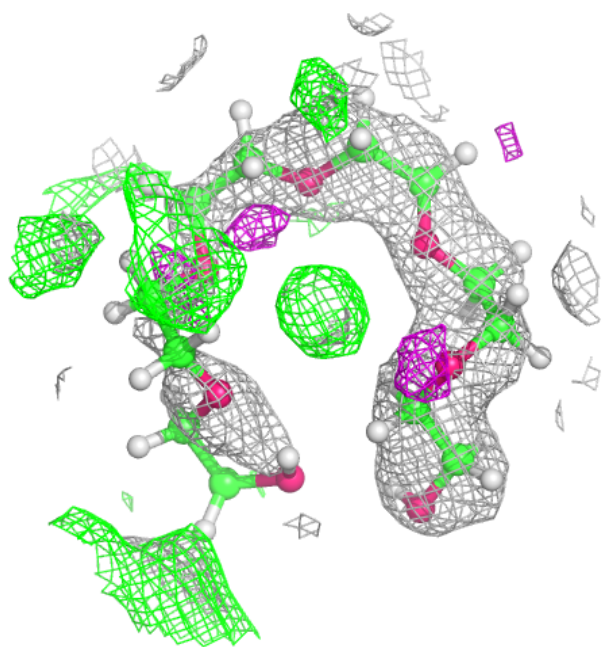
**Electron density around P6G A 1006:**

$2mF_o-DF_c$  (at 0.7 rmsd) in gray  
 $mF_o-DF_c$  (at 3 rmsd) in purple (negative)  
and green (positive)

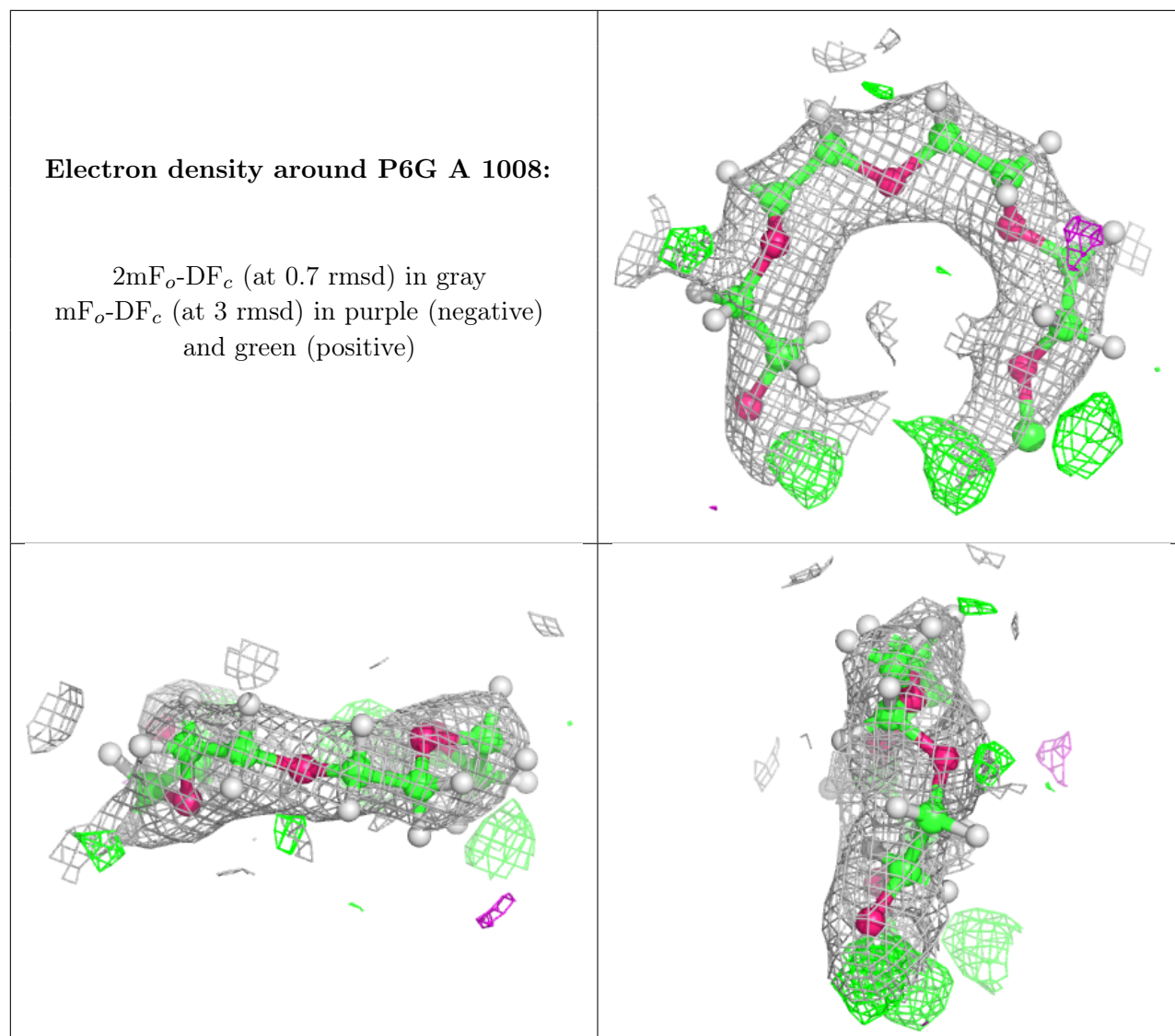


**Electron density around P6G B 204:**

$2mF_o-DF_c$  (at 0.7 rmsd) in gray  
 $mF_o-DF_c$  (at 3 rmsd) in purple (negative)  
and green (positive)







## 6.5 Other polymers [i](#)

There are no such residues in this entry.