



# Full wwPDB X-ray Structure Validation Report ⓘ

Aug 21, 2020 – 10:31 PM BST

PDB ID : 5I3D  
Title : Sulfolobus solfataricus beta-glycosidase - E387Y mutant  
Authors : Iglesias-Fernandez, J.; Hancock, S.M.; Lee, S.S.; McAuley, K.E.; Fordham-Skelton, A.; Rovira, C.; Davis, B.D.  
Deposited on : 2016-02-10  
Resolution : 2.16 Å(reported)

This is a Full wwPDB X-ray Structure Validation Report for a publicly released PDB entry.

We welcome your comments at [validation@mail.wwpdb.org](mailto:validation@mail.wwpdb.org)

A user guide is available at

<https://www.wwpdb.org/validation/2017/XrayValidationReportHelp>

with specific help available everywhere you see the ⓘ symbol.

---

The following versions of software and data (see [references ⓘ](#)) were used in the production of this report:

MolProbity : 4.02b-467  
Mogul : 1.8.5 (274361), CSD as541be (2020)  
Xtriage (Phenix) : 1.13  
EDS : 2.13.1  
buster-report : 1.1.7 (2018)  
Percentile statistics : 20191225.v01 (using entries in the PDB archive December 25th 2019)  
Refmac : 5.8.0158  
CCP4 : 7.0.044 (Gargrove)  
Ideal geometry (proteins) : Engh & Huber (2001)  
Ideal geometry (DNA, RNA) : Parkinson et al. (1996)  
Validation Pipeline (wwPDB-VP) : 2.13.1

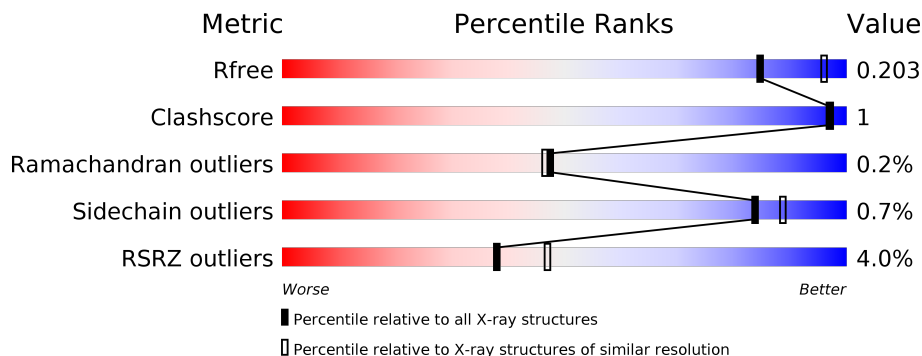
# 1 Overall quality at a glance

The following experimental techniques were used to determine the structure:

*X-RAY DIFFRACTION*

The reported resolution of this entry is 2.16 Å.

Percentile scores (ranging between 0-100) for global validation metrics of the entry are shown in the following graphic. The table shows the number of entries on which the scores are based.



Metric	Whole archive (#Entries)	Similar resolution (#Entries, resolution range(Å))
$R_{free}$	130704	1479 (2.16-2.16)
Clashscore	141614	1585 (2.16-2.16)
Ramachandran outliers	138981	1560 (2.16-2.16)
Sidechain outliers	138945	1559 (2.16-2.16)
RSRZ outliers	127900	1456 (2.16-2.16)

The table below summarises the geometric issues observed across the polymeric chains and their fit to the electron density. The red, orange, yellow and green segments on the lower bar indicate the fraction of residues that contain outliers for  $\geq 3$ , 2, 1 and 0 types of geometric quality criteria respectively. A grey segment represents the fraction of residues that are not modelled. The numeric value for each fraction is indicated below the corresponding segment, with a dot representing fractions  $\leq 5\%$ . The upper red bar (where present) indicates the fraction of residues that have poor fit to the electron density. The numeric value is given above the bar.

Mol	Chain	Length	Quality of chain
1	A	489	<p>3% 97%</p>
1	B	489	<p>4% 96%</p>
1	C	489	<p>4% 96%</p>
1	D	489	<p>5% 95%</p>

## 2 Entry composition

There are 4 unique types of molecules in this entry. The entry contains 16905 atoms, of which 0 are hydrogens and 0 are deuteriums.

In the tables below, the ZeroOcc column contains the number of atoms modelled with zero occupancy, the AltConf column contains the number of residues with at least one atom in alternate conformation and the Trace column contains the number of residues modelled with at most 2 atoms.

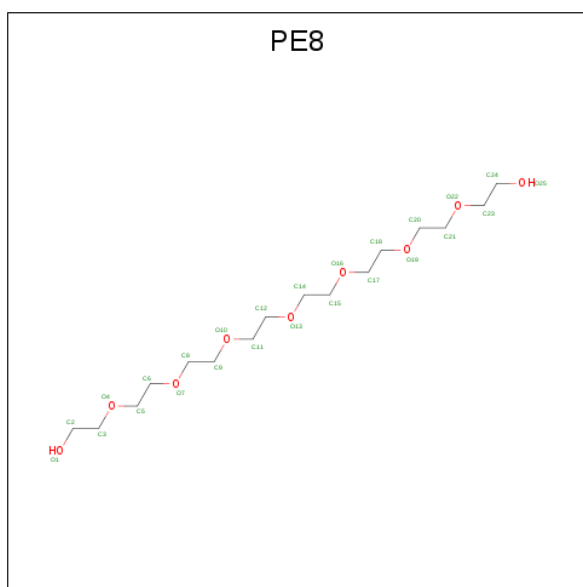
- Molecule 1 is a protein called Beta-galactosidase.

Mol	Chain	Residues	Atoms					ZeroOcc	AltConf	Trace
			Total	C	N	O	S			
1	A	487	3994	2566	685	732	11	0	0	0
1	B	487	3996	2569	684	732	11	0	1	0
1	C	477	3905	2512	668	714	11	0	0	0
1	D	477	3906	2514	669	712	11	0	0	0

There are 4 discrepancies between the modelled and reference sequences:

Chain	Residue	Modelled	Actual	Comment	Reference
A	387	TYR	GLU	engineered mutation	UNP P22498
B	387	TYR	GLU	engineered mutation	UNP P22498
C	387	TYR	GLU	engineered mutation	UNP P22498
D	387	TYR	GLU	engineered mutation	UNP P22498

- Molecule 2 is 3,6,9,12,15,18,21-HEPTAOXATRICOSANE-1,23-DIOL (three-letter code: PE8) (formula: C<sub>16</sub>H<sub>34</sub>O<sub>9</sub>).



Mol	Chain	Residues	Atoms			ZeroOcc	AltConf
2	A	1	Total	C	O	0	0
			25	16	9		

- Molecule 3 is ACETATE ION (three-letter code: ACT) (formula:  $C_2H_3O_2$ ).



Mol	Chain	Residues	Atoms			ZeroOcc	AltConf
3	A	1	Total	C	O	0	0
			4	2	2		
3	A	1	Total	C	O	0	0
			4	2	2		
3	A	1	Total	C	O	0	0
			4	2	2		

*Continued on next page...*

*Continued from previous page...*

Mol	Chain	Residues	Atoms	ZeroOcc	AltConf
3	B	1	Total C O 4 2 2	0	0
3	B	1	Total C O 4 2 2	0	0
3	B	1	Total C O 4 2 2	0	0
3	B	1	Total C O 4 2 2	0	0
3	C	1	Total C O 4 2 2	0	0
3	C	1	Total C O 4 2 2	0	0
3	C	1	Total C O 4 2 2	0	0
3	D	1	Total C O 4 2 2	0	0
3	D	1	Total C O 4 2 2	0	0
3	D	1	Total C O 4 2 2	0	0
3	D	1	Total C O 4 2 2	0	0
3	D	1	Total C O 4 2 2	0	0

- Molecule 4 is water.

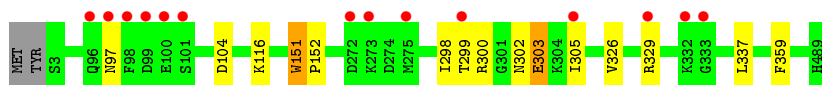
Mol	Chain	Residues	Atoms	ZeroOcc	AltConf
4	A	299	Total O 299 299	0	0
4	B	287	Total O 287 287	0	0
4	C	236	Total O 236 236	0	0
4	D	197	Total O 197 197	0	0

### 3 Residue-property plots [i](#)

These plots are drawn for all protein, RNA, DNA and oligosaccharide chains in the entry. The first graphic for a chain summarises the proportions of the various outlier classes displayed in the second graphic. The second graphic shows the sequence view annotated by issues in geometry and electron density. Residues are color-coded according to the number of geometric quality criteria for which they contain at least one outlier: green = 0, yellow = 1, orange = 2 and red = 3 or more. A red dot above a residue indicates a poor fit to the electron density ( $RSRZ > 2$ ). Stretches of 2 or more consecutive residues without any outlier are shown as a green connector. Residues present in the sample, but not in the model, are shown in grey.

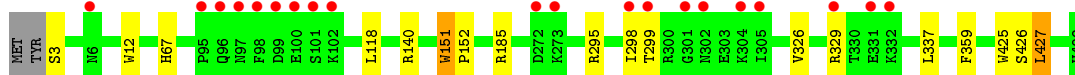
- Molecule 1: Beta-galactosidase

Chain A: 



- Molecule 1: Beta-galactosidase

Chain B: 



- Molecule 1: Beta-galactosidase

Chain C: 



- Molecule 1: Beta-galactosidase

Chain D: 



## 4 Data and refinement statistics

Property	Value	Source
Space group	P 21 21 21	Depositor
Cell constants a, b, c, $\alpha$ , $\beta$ , $\gamma$	92.68Å 129.06Å 191.76Å 90.00° 90.00° 90.00°	Depositor
Resolution (Å)	42.53 – 2.16 42.53 – 2.16	Depositor EDS
% Data completeness (in resolution range)	96.9 (42.53-2.16) 96.9 (42.53-2.16)	Depositor EDS
$R_{merge}$	0.19	Depositor
$R_{sym}$	(Not available)	Depositor
$\langle I/\sigma(I) \rangle$ <sup>1</sup>	2.29 (at 2.16Å)	Xtrriage
Refinement program	PHENIX 1.10.1_2155	Depositor
R, $R_{free}$	0.170 , 0.203 0.170 , 0.203	Depositor DCC
$R_{free}$ test set	6003 reflections (5.01%)	wwPDB-VP
Wilson B-factor (Å <sup>2</sup> )	24.1	Xtrriage
Anisotropy	0.015	Xtrriage
Bulk solvent $k_{sol}$ (e/Å <sup>3</sup> ), $B_{sol}$ (Å <sup>2</sup> )	0.35 , 42.1	EDS
L-test for twinning <sup>2</sup>	$\langle  L  \rangle = 0.49$ , $\langle L^2 \rangle = 0.32$	Xtrriage
Estimated twinning fraction	No twinning to report.	Xtrriage
$F_o, F_c$ correlation	0.95	EDS
Total number of atoms	16905	wwPDB-VP
Average B, all atoms (Å <sup>2</sup> )	26.0	wwPDB-VP

Xtrriage's analysis on translational NCS is as follows: *The largest off-origin peak in the Patterson function is 3.38% of the height of the origin peak. No significant pseudotranslation is detected.*

<sup>1</sup>Intensities estimated from amplitudes.

<sup>2</sup>Theoretical values of  $\langle |L| \rangle$ ,  $\langle L^2 \rangle$  for acentric reflections are 0.5, 0.333 respectively for untwinned datasets, and 0.375, 0.2 for perfectly twinned datasets.

## 5 Model quality [i](#)

### 5.1 Standard geometry [i](#)

Bond lengths and bond angles in the following residue types are not validated in this section: PE8, ACT

The Z score for a bond length (or angle) is the number of standard deviations the observed value is removed from the expected value. A bond length (or angle) with  $|Z| > 5$  is considered an outlier worth inspection. RMSZ is the root-mean-square of all Z scores of the bond lengths (or angles).

Mol	Chain	Bond lengths		Bond angles	
		RMSZ	# Z  >5	RMSZ	# Z  >5
1	A	0.26	0/4123	0.45	0/5605
1	B	0.26	0/4128	0.46	0/5611
1	C	0.26	0/4031	0.46	0/5481
1	D	0.25	0/4032	0.45	0/5481
All	All	0.26	0/16314	0.46	0/22178

There are no bond length outliers.

There are no bond angle outliers.

There are no chirality outliers.

There are no planarity outliers.

### 5.2 Too-close contacts [i](#)

In the following table, the Non-H and H(model) columns list the number of non-hydrogen atoms and hydrogen atoms in the chain respectively. The H(added) column lists the number of hydrogen atoms added and optimized by MolProbity. The Clashes column lists the number of clashes within the asymmetric unit, whereas Symm-Clashes lists symmetry related clashes.

Mol	Chain	Non-H	H(model)	H(added)	Clashes	Symm-Clashes
1	A	3994	0	3773	9	0
1	B	3996	0	3778	9	0
1	C	3905	0	3689	4	0
1	D	3906	0	3698	5	0
2	A	25	0	34	1	0
3	A	12	0	9	0	0
3	B	16	0	12	0	0
3	C	12	0	9	0	0
3	D	20	0	15	0	0

*Continued on next page...*



Continued from previous page...

Mol	Chain	Non-H	H(model)	H(added)	Clashes	Symm-Clashes
4	A	299	0	0	0	0
4	B	287	0	0	1	0
4	C	236	0	0	1	0
4	D	197	0	0	0	0
All	All	16905	0	15017	27	0

The all-atom clashscore is defined as the number of clashes found per 1000 atoms (including hydrogen atoms). The all-atom clashscore for this structure is 1.

All (27) close contacts within the same asymmetric unit are listed below, sorted by their clash magnitude.

Atom-1	Atom-2	Interatomic distance (Å)	Clash overlap (Å)
1:C:299:THR:O	1:C:300:ARG:NH1	2.24	0.70
1:A:104:ASP:OD2	1:A:300:ARG:NH1	2.39	0.56
1:A:302:ASN:OD1	1:A:302:ASN:N	2.41	0.54
1:A:116:LYS:HE2	2:A:501:PE8:H52	1.88	0.54
1:C:234:ARG:NH1	4:C:602:HOH:O	2.44	0.51
1:B:12:TRP:CD1	1:B:427:LEU:HB2	2.47	0.49
1:B:326:VAL:HG12	1:B:337:LEU:HD12	1.96	0.48
1:C:40:PRO:HA	1:C:43:MET:HE2	1.96	0.48
1:B:3:SER:N	4:B:604:HOH:O	2.48	0.46
1:B:425:TRP:HA	1:B:426:SER:HA	1.77	0.46
1:B:67:HIS:HB3	1:B:140:ARG:HD2	1.99	0.44
1:D:131:ARG:HG2	1:D:135:LYS:HE2	1.99	0.44
1:D:178:ARG:NH1	1:D:182:GLU:OE2	2.50	0.44
1:D:326:VAL:HG12	1:D:337:LEU:HD12	1.99	0.44
1:B:118:LEU:HD11	1:B:185:ARG:HB3	2.00	0.44
1:A:303:GLU:HG3	1:A:305:ILE:HG23	2.00	0.44
1:C:151:TRP:HB2	1:C:152:PRO:HD3	2.00	0.44
1:A:326:VAL:HG12	1:A:337:LEU:HD12	2.01	0.43
1:B:295:ARG:HG2	1:B:295:ARG:HH11	1.84	0.43
1:A:151:TRP:HB2	1:A:152:PRO:HD3	2.00	0.43
1:A:298:ILE:HG12	1:A:299:THR:H	1.85	0.42
1:A:97:ASN:N	1:A:97:ASN:OD1	2.53	0.42
1:B:151:TRP:HB2	1:B:152:PRO:HD3	2.01	0.42
1:A:298:ILE:HG12	1:A:299:THR:N	2.35	0.41
1:D:68:ASP:OD1	1:D:140:ARG:NH1	2.42	0.41
1:D:114:GLU:OE2	1:D:185:ARG:HD2	2.21	0.41
1:B:298:ILE:HG12	1:B:299:THR:N	2.36	0.40

There are no symmetry-related clashes.

## 5.3 Torsion angles [i](#)

### 5.3.1 Protein backbone [i](#)

In the following table, the Percentiles column shows the percent Ramachandran outliers of the chain as a percentile score with respect to all X-ray entries followed by that with respect to entries of similar resolution.

The Analysed column shows the number of residues for which the backbone conformation was analysed, and the total number of residues.

Mol	Chain	Analysed	Favoured	Allowed	Outliers	Percentiles	
1	A	485/489 (99%)	473 (98%)	11 (2%)	1 (0%)	47	46
1	B	486/489 (99%)	470 (97%)	15 (3%)	1 (0%)	47	46
1	C	473/489 (97%)	462 (98%)	10 (2%)	1 (0%)	47	46
1	D	473/489 (97%)	461 (98%)	11 (2%)	1 (0%)	47	46
All	All	1917/1956 (98%)	1866 (97%)	47 (2%)	4 (0%)	47	46

All (4) Ramachandran outliers are listed below:

Mol	Chain	Res	Type
1	A	151	TRP
1	B	151	TRP
1	C	151	TRP
1	D	151	TRP

### 5.3.2 Protein sidechains [i](#)

In the following table, the Percentiles column shows the percent sidechain outliers of the chain as a percentile score with respect to all X-ray entries followed by that with respect to entries of similar resolution.

The Analysed column shows the number of residues for which the sidechain conformation was analysed, and the total number of residues.

Mol	Chain	Analysed	Rotameric	Outliers	Percentiles	
1	A	416/421 (99%)	413 (99%)	3 (1%)	84	89
1	B	416/421 (99%)	413 (99%)	3 (1%)	84	89
1	C	406/421 (96%)	403 (99%)	3 (1%)	84	89
1	D	406/421 (96%)	404 (100%)	2 (0%)	88	92
All	All	1644/1684 (98%)	1633 (99%)	11 (1%)	84	89

All (11) residues with a non-rotameric sidechain are listed below:

Mol	Chain	Res	Type
1	A	303	GLU
1	A	329	ARG
1	A	359	PHE
1	B	329	ARG
1	B	359	PHE
1	B	427	LEU
1	C	298	ILE
1	C	329	ARG
1	C	359	PHE
1	D	349	VAL
1	D	359	PHE

Some sidechains can be flipped to improve hydrogen bonding and reduce clashes. All (1) such sidechains are listed below:

Mol	Chain	Res	Type
1	B	414	ASN

### 5.3.3 RNA [i](#)

There are no RNA molecules in this entry.

## 5.4 Non-standard residues in protein, DNA, RNA chains [i](#)

There are no non-standard protein/DNA/RNA residues in this entry.

## 5.5 Carbohydrates [i](#)

There are no monosaccharides in this entry.

## 5.6 Ligand geometry [i](#)

16 ligands are modelled in this entry.

In the following table, the Counts columns list the number of bonds (or angles) for which Mogul statistics could be retrieved, the number of bonds (or angles) that are observed in the model and the number of bonds (or angles) that are defined in the Chemical Component Dictionary. The Link column lists molecule types, if any, to which the group is linked. The Z score for a bond length (or angle) is the number of standard deviations the observed value is removed from the

expected value. A bond length (or angle) with  $|Z| > 2$  is considered an outlier worth inspection. RMSZ is the root-mean-square of all Z scores of the bond lengths (or angles).

Mol	Type	Chain	Res	Link	Bond lengths			Bond angles		
					Counts	RMSZ	# Z  > 2	Counts	RMSZ	# Z  > 2
3	ACT	A	504	-	1,3,3	1.04	0	0,3,3	0.00	-
3	ACT	B	502	-	1,3,3	1.51	0	0,3,3	0.00	-
2	PE8	A	501	-	24,24,24	0.51	0	23,23,23	0.17	0
3	ACT	D	501	-	1,3,3	1.51	0	0,3,3	0.00	-
3	ACT	C	501	-	1,3,3	1.25	0	0,3,3	0.00	-
3	ACT	B	501	-	1,3,3	1.29	0	0,3,3	0.00	-
3	ACT	D	505	-	1,3,3	1.02	0	0,3,3	0.00	-
3	ACT	D	502	-	1,3,3	1.44	0	0,3,3	0.00	-
3	ACT	A	502	-	1,3,3	1.27	0	0,3,3	0.00	-
3	ACT	D	504	-	1,3,3	1.56	0	0,3,3	0.00	-
3	ACT	C	502	-	1,3,3	1.39	0	0,3,3	0.00	-
3	ACT	D	503	-	1,3,3	1.31	0	0,3,3	0.00	-
3	ACT	A	503	-	1,3,3	1.27	0	0,3,3	0.00	-
3	ACT	C	503	-	1,3,3	0.95	0	0,3,3	0.00	-
3	ACT	B	503	-	1,3,3	1.09	0	0,3,3	0.00	-
3	ACT	B	504	-	1,3,3	1.37	0	0,3,3	0.00	-

In the following table, the Chirals column lists the number of chiral outliers, the number of chiral centers analysed, the number of these observed in the model and the number defined in the Chemical Component Dictionary. Similar counts are reported in the Torsion and Rings columns. '-' means no outliers of that kind were identified.

Mol	Type	Chain	Res	Link	Chirals	Torsions	Rings
2	PE8	A	501	-	-	6/22/22/22	-

There are no bond length outliers.

There are no bond angle outliers.

There are no chirality outliers.

All (6) torsion outliers are listed below:

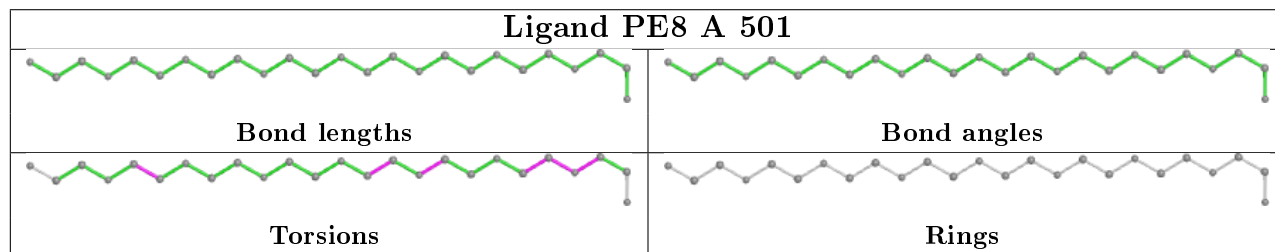
Mol	Chain	Res	Type	Atoms
2	A	501	PE8	O10-C11-C12-O13
2	A	501	PE8	O4-C5-C6-O7
2	A	501	PE8	C8-C9-O10-C11
2	A	501	PE8	C2-C3-O4-C5
2	A	501	PE8	O19-C20-C21-O22
2	A	501	PE8	C6-C5-O4-C3

There are no ring outliers.

1 monomer is involved in 1 short contact:

Mol	Chain	Res	Type	Clashes	Symm-Clashes
2	A	501	PE8	1	0

The following is a two-dimensional graphical depiction of Mogul quality analysis of bond lengths, bond angles, torsion angles, and ring geometry for all instances of the Ligand of Interest. In addition, ligands with molecular weight > 250 and outliers as shown on the validation Tables will also be included. For torsion angles, if less than 5% of the Mogul distribution of torsion angles is within 10 degrees of the torsion angle in question, then that torsion angle is considered an outlier. Any bond that is central to one or more torsion angles identified as an outlier by Mogul will be highlighted in the graph. For rings, the root-mean-square deviation (RMSD) between the ring in question and similar rings identified by Mogul is calculated over all ring torsion angles. If the average RMSD is greater than 60 degrees and the minimal RMSD between the ring in question and any Mogul-identified rings is also greater than 60 degrees, then that ring is considered an outlier. The outliers are highlighted in purple. The color gray indicates Mogul did not find sufficient equivalents in the CSD to analyse the geometry.



## 5.7 Other polymers [i](#)

There are no such residues in this entry.

## 5.8 Polymer linkage issues [i](#)

There are no chain breaks in this entry.

## 6 Fit of model and data

### 6.1 Protein, DNA and RNA chains

In the following table, the column labelled ‘#RSRZ> 2’ contains the number (and percentage) of RSRZ outliers, followed by percent RSRZ outliers for the chain as percentile scores relative to all X-ray entries and entries of similar resolution. The OWAB column contains the minimum, median, 95<sup>th</sup> percentile and maximum values of the occupancy-weighted average B-factor per residue. The column labelled ‘Q< 0.9’ lists the number of (and percentage) of residues with an average occupancy less than 0.9.

Mol	Chain	Analysed	<RSRZ>	#RSRZ>2	OWAB(Å <sup>2</sup> )	Q<0.9
1	A	487/489 (99%)	-0.28	14 (2%) 51 61	15, 22, 48, 77	0
1	B	487/489 (99%)	-0.41	20 (4%) 37 46	13, 20, 48, 81	0
1	C	477/489 (97%)	-0.24	20 (4%) 36 45	15, 23, 52, 93	0
1	D	477/489 (97%)	-0.22	24 (5%) 28 37	18, 27, 57, 86	0
All	All	1928/1956 (98%)	-0.29	78 (4%) 38 47	13, 23, 51, 93	0

All (78) RSRZ outliers are listed below:

Mol	Chain	Res	Type	RSRZ
1	C	301	GLY	7.9
1	B	305	ILE	6.6
1	B	302	ASN	6.0
1	C	302	ASN	5.7
1	A	97	ASN	5.6
1	C	305	ILE	5.0
1	A	305	ILE	4.8
1	B	96	GLN	4.8
1	C	303	GLU	4.3
1	C	299	THR	4.1
1	C	300	ARG	4.0
1	D	272	ASP	3.8
1	B	331	GLU	3.7
1	C	109	GLU	3.7
1	D	329	ARG	3.6
1	D	109	GLU	3.5
1	C	331	GLU	3.4
1	B	95	PRO	3.4
1	D	301	GLY	3.4
1	D	302	ASN	3.3
1	D	333	GLY	3.3

*Continued on next page...*

*Continued from previous page...*

<b>Mol</b>	<b>Chain</b>	<b>Res</b>	<b>Type</b>	<b>RSRZ</b>
1	B	97	ASN	3.3
1	D	331	GLU	3.2
1	A	272	ASP	3.2
1	C	272	ASP	3.2
1	C	304	LYS	3.2
1	A	98	PHE	3.1
1	B	98	PHE	3.1
1	D	332	LYS	3.0
1	A	96	GLN	3.0
1	C	117	ARG	3.0
1	C	329	ARG	2.9
1	B	329	ARG	2.9
1	B	101	SER	2.8
1	D	121	TYR	2.8
1	C	273	LYS	2.8
1	B	273	LYS	2.8
1	D	273	LYS	2.7
1	D	270	LEU	2.7
1	B	301	GLY	2.7
1	C	333	GLY	2.6
1	C	271	THR	2.6
1	D	330	THR	2.6
1	C	121	TYR	2.6
1	D	276	GLU	2.6
1	A	275	MET	2.6
1	B	332	LYS	2.5
1	A	99	ASP	2.5
1	A	333	GLY	2.5
1	B	100	GLU	2.5
1	D	93	PRO	2.4
1	D	275	MET	2.4
1	B	6	ASN	2.4
1	D	334	TYR	2.4
1	D	271	THR	2.4
1	C	113	ASN	2.4
1	A	299	THR	2.4
1	A	329	ARG	2.4
1	A	100	GLU	2.4
1	B	102	LYS	2.4
1	C	275	MET	2.4
1	D	113	ASN	2.3
1	A	332	LYS	2.3

*Continued on next page...*

*Continued from previous page...*

Mol	Chain	Res	Type	RSRZ
1	D	112	GLU	2.3
1	B	304	LYS	2.3
1	D	107	GLU	2.2
1	D	117	ARG	2.2
1	C	298	ILE	2.2
1	D	305	ILE	2.2
1	D	335	VAL	2.2
1	B	99	ASP	2.1
1	A	101	SER	2.1
1	D	269	PRO	2.1
1	B	298	ILE	2.1
1	A	273	LYS	2.0
1	C	332	LYS	2.0
1	B	272	ASP	2.0
1	B	299	THR	2.0

## 6.2 Non-standard residues in protein, DNA, RNA chains [i](#)

There are no non-standard protein/DNA/RNA residues in this entry.

## 6.3 Carbohydrates [i](#)

There are no monosaccharides in this entry.

## 6.4 Ligands [i](#)

In the following table, the Atoms column lists the number of modelled atoms in the group and the number defined in the chemical component dictionary. The B-factors column lists the minimum, median, 95<sup>th</sup> percentile and maximum values of B factors of atoms in the group. The column labelled 'Q< 0.9' lists the number of atoms with occupancy less than 0.9.

Mol	Type	Chain	Res	Atoms	RSCC	RSR	B-factors(Å <sup>2</sup> )	Q<0.9
3	ACT	D	502	4/4	0.85	0.14	28,39,41,42	0
2	PE8	A	501	25/25	0.87	0.17	16,29,47,48	0
3	ACT	A	504	4/4	0.92	0.12	25,26,27,29	0
3	ACT	D	505	4/4	0.94	0.15	33,38,42,42	0
3	ACT	B	502	4/4	0.95	0.11	15,21,22,24	0
3	ACT	C	503	4/4	0.95	0.13	31,34,35,35	0
3	ACT	D	504	4/4	0.96	0.11	20,21,27,28	0
3	ACT	C	502	4/4	0.96	0.10	17,24,29,29	0

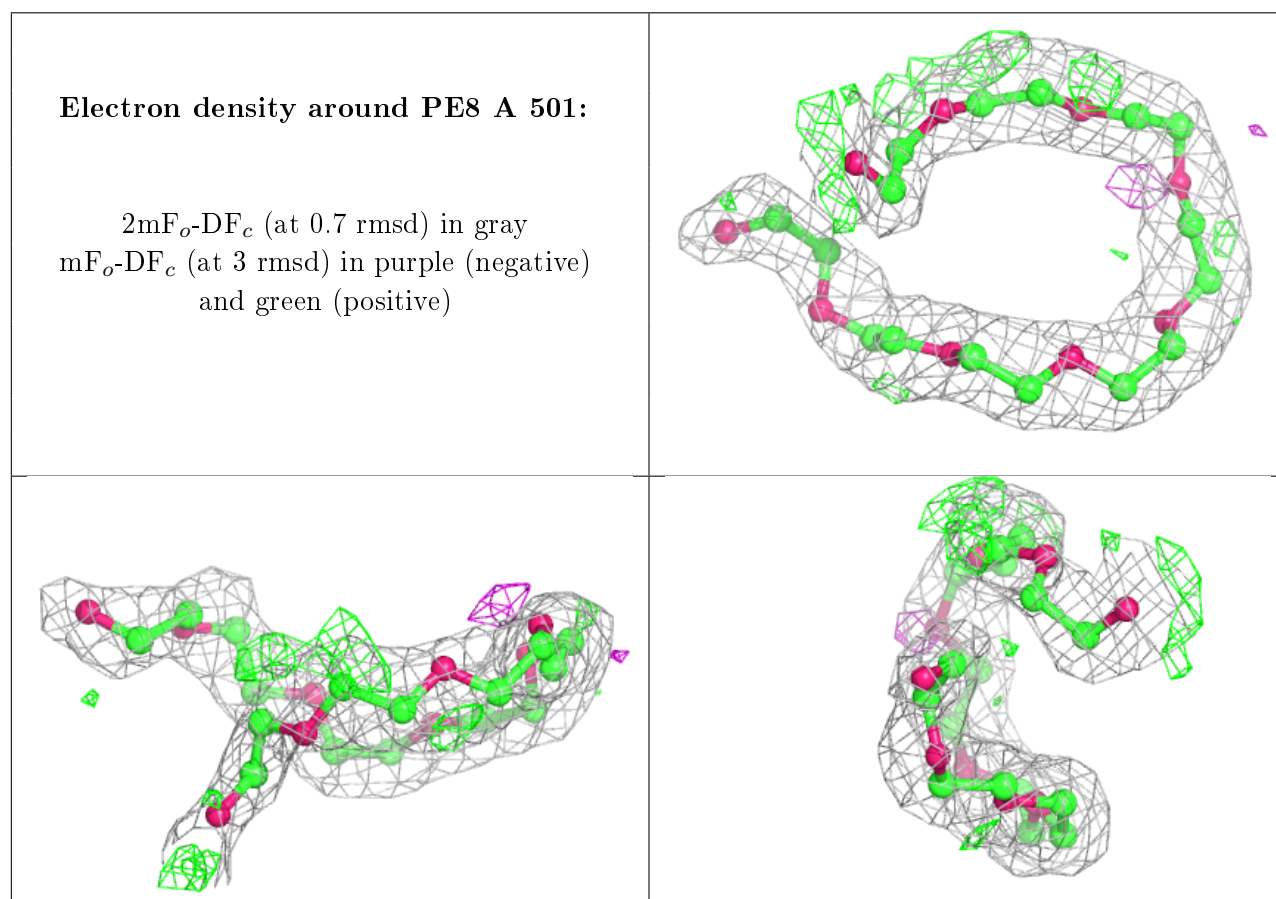
*Continued on next page...*



Continued from previous page...

Mol	Type	Chain	Res	Atoms	RSCC	RSR	B-factors( $\text{\AA}^2$ )	Q<0.9
3	ACT	D	501	4/4	0.96	0.16	30,35,36,43	0
3	ACT	B	503	4/4	0.96	0.15	22,25,26,27	0
3	ACT	B	504	4/4	0.96	0.10	27,29,33,35	0
3	ACT	A	502	4/4	0.97	0.12	20,21,25,27	0
3	ACT	C	501	4/4	0.98	0.14	19,23,25,26	0
3	ACT	D	503	4/4	0.98	0.12	20,22,24,25	0
3	ACT	A	503	4/4	0.98	0.10	21,22,23,25	0
3	ACT	B	501	4/4	0.99	0.07	16,18,20,23	0

The following is a graphical depiction of the model fit to experimental electron density of all instances of the Ligand of Interest. In addition, ligands with molecular weight > 250 and outliers as shown on the geometry validation Tables will also be included. Each fit is shown from different orientation to approximate a three-dimensional view.



## 6.5 Other polymers [\(i\)](#)

There are no such residues in this entry.