



# Full wwPDB X-ray Structure Validation Report ⓘ

Nov 1, 2023 – 01:16 PM JST

PDB ID : 5HWY  
Title : Structural mechanisms of extracellular ion exchange and induced binding-site occlusion in the sodium-calcium exchanger NCX\_Mj soaked with 10 mM Na<sup>+</sup> and zero Ca<sup>2+</sup>  
Authors : Liao, J.; Jiang, Y.X.; Faraldo-Gomez, J.D.  
Deposited on : 2016-01-29  
Resolution : 2.10 Å(reported)

This is a Full wwPDB X-ray Structure Validation Report for a publicly released PDB entry.

We welcome your comments at [validation@mail.wwpdb.org](mailto:validation@mail.wwpdb.org)

A user guide is available at

<https://www.wwpdb.org/validation/2017/XrayValidationReportHelp>

with specific help available everywhere you see the ⓘ symbol.

The types of validation reports are described at

<http://www.wwpdb.org/validation/2017/FAQs#types>.

---

The following versions of software and data (see [references ⓘ](#)) were used in the production of this report:

MolProbity : 4.02b-467  
Mogul : 1.8.5 (274361), CSD as541be (2020)  
Xtriage (Phenix) : 1.13  
EDS : 2.36  
buster-report : 1.1.7 (2018)  
Percentile statistics : 20191225.v01 (using entries in the PDB archive December 25th 2019)  
Refmac : 5.8.0158  
CCP4 : 7.0.044 (Gargrove)  
Ideal geometry (proteins) : Engh & Huber (2001)  
Ideal geometry (DNA, RNA) : Parkinson et al. (1996)  
Validation Pipeline (wwPDB-VP) : 2.36

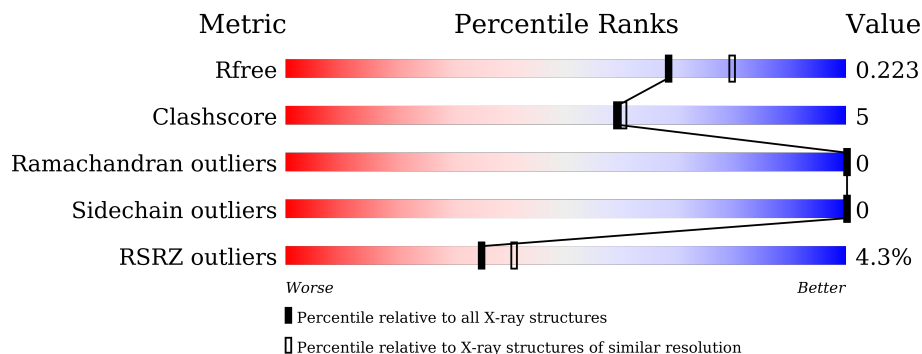
# 1 Overall quality at a glance

The following experimental techniques were used to determine the structure:

*X-RAY DIFFRACTION*

The reported resolution of this entry is 2.10 Å.

Percentile scores (ranging between 0-100) for global validation metrics of the entry are shown in the following graphic. The table shows the number of entries on which the scores are based.



Metric	Whole archive (#Entries)	Similar resolution (#Entries, resolution range(Å))
$R_{free}$	130704	5197 (2.10-2.10)
Clashscore	141614	5710 (2.10-2.10)
Ramachandran outliers	138981	5647 (2.10-2.10)
Sidechain outliers	138945	5648 (2.10-2.10)
RSRZ outliers	127900	5083 (2.10-2.10)

The table below summarises the geometric issues observed across the polymeric chains and their fit to the electron density. The red, orange, yellow and green segments of the lower bar indicate the fraction of residues that contain outliers for  $\geq 3$ , 2, 1 and 0 types of geometric quality criteria respectively. A grey segment represents the fraction of residues that are not modelled. The numeric value for each fraction is indicated below the corresponding segment, with a dot representing fractions  $\leq 5\%$ . The upper red bar (where present) indicates the fraction of residues that have poor fit to the electron density. The numeric value is given above the bar.

Mol	Chain	Length	Quality of chain
1	A	300	

The following table lists non-polymeric compounds, carbohydrate monomers and non-standard residues in protein, DNA, RNA chains that are outliers for geometric or electron-density-fit criteria:

Mol	Type	Chain	Res	Chirality	Geometry	Clashes	Electron density
4	MYS	A	407	-	-	-	X
4	MYS	A	412	-	-	-	X

## 2 Entry composition [i](#)

There are 7 unique types of molecules in this entry. The entry contains 2466 atoms, of which 0 are hydrogens and 0 are deuteriums.

In the tables below, the ZeroOcc column contains the number of atoms modelled with zero occupancy, the AltConf column contains the number of residues with at least one atom in alternate conformation and the Trace column contains the number of residues modelled with at most 2 atoms.

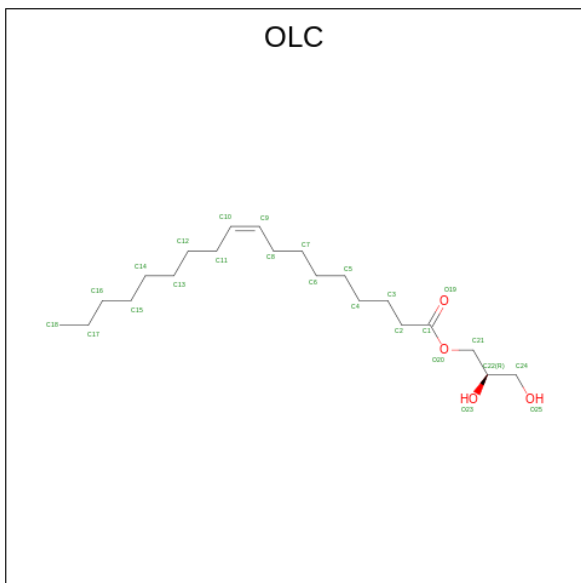
- Molecule 1 is a protein called Uncharacterized membrane protein MJ0091.

Mol	Chain	Residues	Atoms					ZeroOcc	AltConf	Trace
			Total	C	N	O	S			
1	A	300	2274	1513	358	393	10	0	4	0

There is a discrepancy between the modelled and reference sequences:

Chain	Residue	Modelled	Actual	Comment	Reference
A	2	VAL	LEU	engineered mutation	UNP Q57556

- Molecule 2 is (2R)-2,3-dihydroxypropyl (9Z)-octadec-9-enoate (three-letter code: OLC) (formula: C<sub>21</sub>H<sub>40</sub>O<sub>4</sub>).

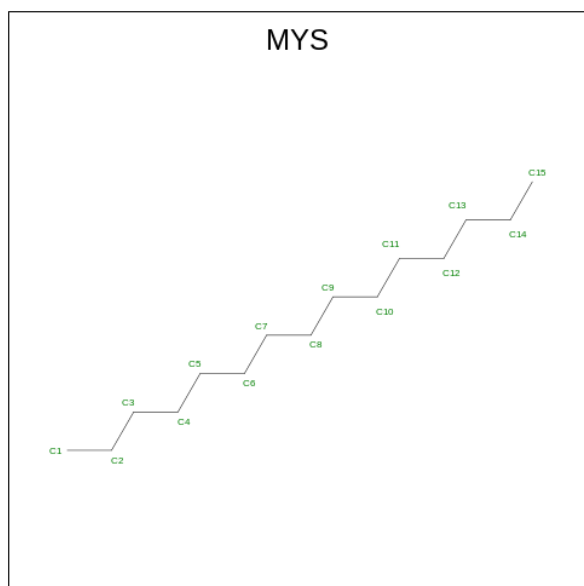


Mol	Chain	Residues	Atoms			ZeroOcc	AltConf
			Total	C	O		
2	A	1	22	18	4	0	0

- Molecule 3 is SODIUM ION (three-letter code: NA) (formula: Na).

Mol	Chain	Residues	Atoms	ZeroOcc	AltConf
3	A	2	Total Na 2 2	0	0

- Molecule 4 is PENTADECANE (three-letter code: MYS) (formula: C<sub>15</sub>H<sub>32</sub>).



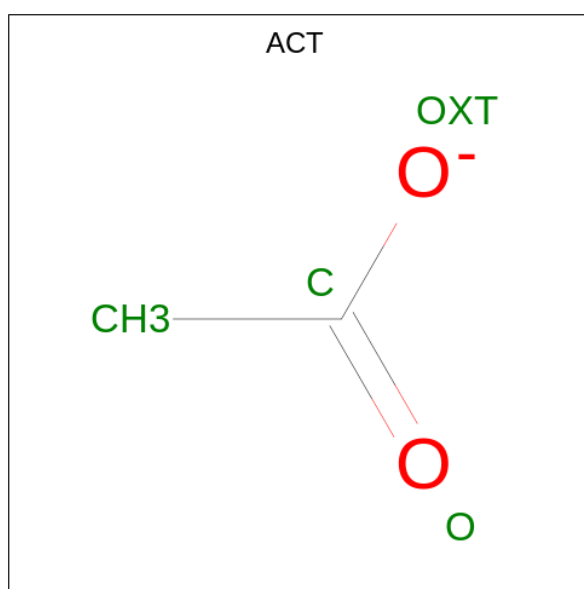
Mol	Chain	Residues	Atoms	ZeroOcc	AltConf
4	A	1	Total C 14 14	0	0
4	A	1	Total C 15 15	0	0
4	A	1	Total C 11 11	0	0
4	A	1	Total C 8 8	0	0
4	A	1	Total C 9 9	0	0
4	A	1	Total C 6 6	0	0
4	A	1	Total C 6 6	0	0
4	A	1	Total C 5 5	0	0
4	A	1	Total C 5 5	0	0
4	A	1	Total C 10 10	0	0
4	A	1	Total C 4 4	0	0

*Continued on next page...*

Continued from previous page...

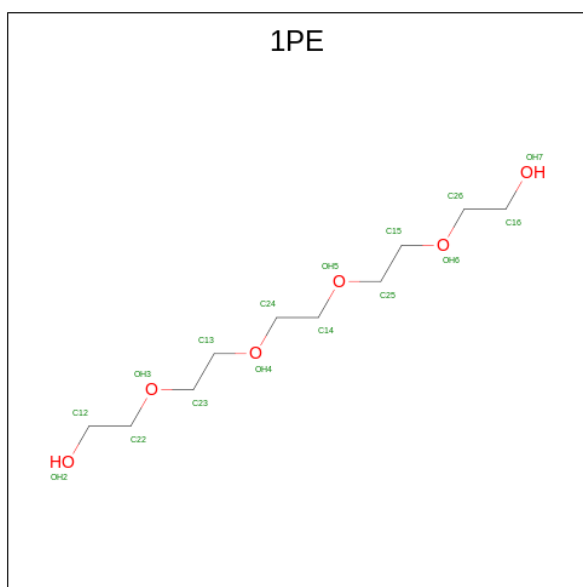
Mol	Chain	Residues	Atoms	ZeroOcc	AltConf
4	A	1	Total C 7 7	0	0
4	A	1	Total C 7 7	0	0
4	A	1	Total C 4 4	0	0
4	A	1	Total C 4 4	0	0

- Molecule 5 is ACETATE ION (three-letter code: ACT) (formula: C<sub>2</sub>H<sub>3</sub>O<sub>2</sub>).



Mol	Chain	Residues	Atoms	ZeroOcc	AltConf
5	A	1	Total C O 4 2 2	0	0

- Molecule 6 is PENTAETHYLENE GLYCOL (three-letter code: 1PE) (formula: C<sub>10</sub>H<sub>22</sub>O<sub>6</sub>).



Mol	Chain	Residues	Atoms			ZeroOcc	AltConf
6	A	1	Total	C	O	0	0
			13	8	5		

- Molecule 7 is water.

Mol	Chain	Residues	Atoms		ZeroOcc	AltConf
7	A	36	Total	O	0	0
			36	36		





## 4 Data and refinement statistics

Property	Value	Source
Space group	P 21 21 21	Depositor
Cell constants a, b, c, $\alpha$ , $\beta$ , $\gamma$	46.21Å 71.97Å 95.63Å 90.00° 90.00° 90.00°	Depositor
Resolution (Å)	36.02 – 2.10 36.02 – 2.10	Depositor EDS
% Data completeness (in resolution range)	99.7 (36.02-2.10) 99.7 (36.02-2.10)	Depositor EDS
$R_{merge}$	0.09	Depositor
$R_{sym}$	(Not available)	Depositor
$\langle I/\sigma(I) \rangle$ <sup>1</sup>	3.03 (at 2.10Å)	Xtrriage
Refinement program	PHENIX 1.9_1692	Depositor
R, $R_{free}$	0.188 , 0.223 0.191 , 0.223	Depositor DCC
$R_{free}$ test set	1541 reflections (8.00%)	wwPDB-VP
Wilson B-factor (Å <sup>2</sup> )	32.8	Xtrriage
Anisotropy	0.245	Xtrriage
Bulk solvent $k_{sol}$ (e/Å <sup>3</sup> ), $B_{sol}$ (Å <sup>2</sup> )	0.39 , 75.6	EDS
L-test for twinning <sup>2</sup>	$\langle  L  \rangle = 0.50$ , $\langle L^2 \rangle = 0.34$	Xtrriage
Estimated twinning fraction	No twinning to report.	Xtrriage
$F_o, F_c$ correlation	0.95	EDS
Total number of atoms	2466	wwPDB-VP
Average B, all atoms (Å <sup>2</sup> )	35.0	wwPDB-VP

Xtrriage's analysis on translational NCS is as follows: *The largest off-origin peak in the Patterson function is 8.27% of the height of the origin peak. No significant pseudotranslation is detected.*

<sup>1</sup>Intensities estimated from amplitudes.

<sup>2</sup>Theoretical values of  $\langle |L| \rangle$ ,  $\langle L^2 \rangle$  for acentric reflections are 0.5, 0.333 respectively for untwinned datasets, and 0.375, 0.2 for perfectly twinned datasets.

## 5 Model quality i

### 5.1 Standard geometry i

Bond lengths and bond angles in the following residue types are not validated in this section: 1PE, MYS, NA, OLC, ACT

The Z score for a bond length (or angle) is the number of standard deviations the observed value is removed from the expected value. A bond length (or angle) with  $|Z| > 5$  is considered an outlier worth inspection. RMSZ is the root-mean-square of all Z scores of the bond lengths (or angles).

Mol	Chain	Bond lengths		Bond angles	
		RMSZ	# Z  >5	RMSZ	# Z  >5
1	A	0.37	2/2327 (0.1%)	0.54	4/3162 (0.1%)

Chiral center outliers are detected by calculating the chiral volume of a chiral center and verifying if the center is modelled as a planar moiety or with the opposite hand. A planarity outlier is detected by checking planarity of atoms in a peptide group, atoms in a mainchain group or atoms of a sidechain that are expected to be planar.

Mol	Chain	#Chirality outliers	#Planarity outliers
1	A	0	1

All (2) bond length outliers are listed below:

Mol	Chain	Res	Type	Atoms	Z	Observed(Å)	Ideal(Å)
1	A	232[A]	ASN	CA-C	5.97	1.68	1.52
1	A	232[B]	ASN	CA-C	5.97	1.68	1.52

All (4) bond angle outliers are listed below:

Mol	Chain	Res	Type	Atoms	Z	Observed(°)	Ideal(°)
1	A	232[A]	ASN	CB-CA-C	-10.06	90.29	110.40
1	A	232[B]	ASN	CB-CA-C	-10.06	90.29	110.40
1	A	232[A]	ASN	CA-C-N	-6.43	103.05	117.20
1	A	232[B]	ASN	CA-C-N	-6.43	103.05	117.20

There are no chirality outliers.

All (1) planarity outliers are listed below:

Mol	Chain	Res	Type	Group
1	A	232[A]	ASN	Mainchain

## 5.2 Too-close contacts [i](#)

In the following table, the Non-H and H(model) columns list the number of non-hydrogen atoms and hydrogen atoms in the chain respectively. The H(added) column lists the number of hydrogen atoms added and optimized by MolProbity. The Clashes column lists the number of clashes within the asymmetric unit, whereas Symm-Clashes lists symmetry-related clashes.

Mol	Chain	Non-H	H(model)	H(added)	Clashes	Symm-Clashes
1	A	2274	0	2425	19	0
2	A	22	0	31	1	0
3	A	2	0	0	0	0
4	A	115	0	179	8	0
5	A	4	0	3	1	0
6	A	13	0	17	6	0
7	A	36	0	0	0	0
All	All	2466	0	2655	24	0

The all-atom clashscore is defined as the number of clashes found per 1000 atoms (including hydrogen atoms). The all-atom clashscore for this structure is 5.

All (24) close contacts within the same asymmetric unit are listed below, sorted by their clash magnitude.

Atom-1	Atom-2	Interatomic distance (Å)	Clash overlap (Å)
1:A:103[B]:LYS:HE2	1:A:141:TRP:HZ2	1.56	0.70
1:A:17:TYR:OH	6:A:420:1PE:H132	2.01	0.61
1:A:148:ALA:O	1:A:150:ILE:HG13	2.01	0.60
1:A:250:LEU:HD13	4:A:408:MYS:H61	1.85	0.58
1:A:222:LYS:NZ	6:A:420:1PE:H131	2.21	0.56
1:A:263:VAL:HG22	4:A:416:MYS:H51	1.86	0.56
1:A:207:PHE:HB2	2:A:401:OLC:H21A	1.91	0.53
1:A:222:LYS:HZ3	6:A:420:1PE:H131	1.73	0.52
1:A:291:LEU:HD22	4:A:416:MYS:H31	1.92	0.52
4:A:405:MYS:H153	5:A:419:ACT:H2	1.94	0.49
1:A:219:ALA:HB2	6:A:420:1PE:H252	1.94	0.48
1:A:222:LYS:HZ1	6:A:420:1PE:H161	1.79	0.48
4:A:404:MYS:H122	4:A:404:MYS:H91	1.69	0.45
1:A:103[B]:LYS:HE2	1:A:141:TRP:CZ2	2.46	0.45
4:A:405:MYS:H101	4:A:405:MYS:H72	1.64	0.44
1:A:191:LEU:HD12	1:A:196:SER:OG	2.18	0.44
1:A:35:ASN:OD1	1:A:149:GLU:HG3	2.18	0.44
1:A:119:GLY:HA3	1:A:123:PHE:CZ	2.54	0.43
4:A:406:MYS:H72	4:A:406:MYS:H42	1.82	0.42
1:A:17:TYR:CZ	6:A:420:1PE:H241	2.54	0.42

*Continued on next page...*

Continued from previous page...

Atom-1	Atom-2	Interatomic distance (Å)	Clash overlap (Å)
1:A:282:ARG:O	1:A:286:ILE:HG13	2.20	0.41
4:A:407:MYS:H62	4:A:407:MYS:H31	1.86	0.41
1:A:144:LYS:HE3	1:A:144:LYS:HB2	1.78	0.41
1:A:105:ILE:HD11	1:A:230:LEU:HD21	2.03	0.40

There are no symmetry-related clashes.

## 5.3 Torsion angles [i](#)

### 5.3.1 Protein backbone [i](#)

In the following table, the Percentiles column shows the percent Ramachandran outliers of the chain as a percentile score with respect to all X-ray entries followed by that with respect to entries of similar resolution.

The Analysed column shows the number of residues for which the backbone conformation was analysed, and the total number of residues.

Mol	Chain	Analysed	Favoured	Allowed	Outliers	Percentiles
1	A	302/300 (101%)	293 (97%)	9 (3%)	0	100   100

There are no Ramachandran outliers to report.

### 5.3.2 Protein sidechains [i](#)

In the following table, the Percentiles column shows the percent sidechain outliers of the chain as a percentile score with respect to all X-ray entries followed by that with respect to entries of similar resolution.

The Analysed column shows the number of residues for which the sidechain conformation was analysed, and the total number of residues.

Mol	Chain	Analysed	Rotameric	Outliers	Percentiles
1	A	245/241 (102%)	245 (100%)	0	100   100

There are no protein residues with a non-rotameric sidechain to report.

Sometimes sidechains can be flipped to improve hydrogen bonding and reduce clashes. There are no such sidechains identified.

### 5.3.3 RNA [i](#)

There are no RNA molecules in this entry.

## 5.4 Non-standard residues in protein, DNA, RNA chains [i](#)

There are no non-standard protein/DNA/RNA residues in this entry.

## 5.5 Carbohydrates [i](#)

There are no monosaccharides in this entry.

## 5.6 Ligand geometry [i](#)

Of 20 ligands modelled in this entry, 2 are monoatomic - leaving 18 for Mogul analysis.

In the following table, the Counts columns list the number of bonds (or angles) for which Mogul statistics could be retrieved, the number of bonds (or angles) that are observed in the model and the number of bonds (or angles) that are defined in the Chemical Component Dictionary. The Link column lists molecule types, if any, to which the group is linked. The Z score for a bond length (or angle) is the number of standard deviations the observed value is removed from the expected value. A bond length (or angle) with  $|Z| > 2$  is considered an outlier worth inspection. RMSZ is the root-mean-square of all Z scores of the bond lengths (or angles).

Mol	Type	Chain	Res	Link	Bond lengths			Bond angles		
					Counts	RMSZ	# Z  > 2	Counts	RMSZ	# Z  > 2
4	MYS	A	415	-	6,6,14	0.34	0	5,5,13	0.48	0
4	MYS	A	405	-	14,14,14	0.31	0	13,13,13	1.22	1 (7%)
4	MYS	A	410	-	5,5,14	0.28	0	4,4,13	0.56	0
4	MYS	A	417	-	3,3,14	0.42	0	2,2,13	0.75	0
2	OLC	A	401	-	21,21,24	0.94	1 (4%)	22,22,25	1.10	2 (9%)
5	ACT	A	419	-	3,3,3	0.94	0	3,3,3	1.02	0
4	MYS	A	411	-	4,4,14	0.36	0	3,3,13	0.53	0
4	MYS	A	418	-	3,3,14	0.44	0	2,2,13	0.73	0
6	1PE	A	420	-	12,12,15	0.61	0	11,11,14	0.92	0
4	MYS	A	409	-	5,5,14	0.32	0	4,4,13	0.60	0
4	MYS	A	416	-	6,6,14	0.40	0	5,5,13	0.76	0
4	MYS	A	406	-	10,10,14	0.42	0	9,9,13	1.10	1 (11%)
4	MYS	A	408	-	8,8,14	0.32	0	7,7,13	0.79	0
4	MYS	A	414	-	3,3,14	0.43	0	2,2,13	0.74	0
4	MYS	A	413	-	9,9,14	0.34	0	8,8,13	0.86	0
4	MYS	A	407	-	7,7,14	0.38	0	6,6,13	0.79	0
4	MYS	A	404	-	13,13,14	0.32	0	12,12,13	1.49	2 (16%)

Mol	Type	Chain	Res	Link	Bond lengths			Bond angles		
					Counts	RMSZ	# Z  > 2	Counts	RMSZ	# Z  > 2
4	MYS	A	412	-	4,4,14	0.34	0	3,3,13	0.57	0

In the following table, the Chirals column lists the number of chiral outliers, the number of chiral centers analysed, the number of these observed in the model and the number defined in the Chemical Component Dictionary. Similar counts are reported in the Torsion and Rings columns. '-' means no outliers of that kind were identified.

Mol	Type	Chain	Res	Link	Chirals	Torsions	Rings
4	MYS	A	415	-	-	0/4/4/12	-
4	MYS	A	405	-	-	0/12/12/12	-
4	MYS	A	410	-	-	0/3/3/12	-
4	MYS	A	417	-	-	0/1/1/12	-
2	OLC	A	401	-	-	3/21/21/24	-
6	1PE	A	420	-	-	2/10/10/13	-
4	MYS	A	411	-	-	0/2/2/12	-
4	MYS	A	418	-	-	0/1/1/12	-
4	MYS	A	409	-	-	0/3/3/12	-
4	MYS	A	416	-	-	0/4/4/12	-
4	MYS	A	406	-	-	0/8/8/12	-
4	MYS	A	408	-	-	0/6/6/12	-
4	MYS	A	414	-	-	0/1/1/12	-
4	MYS	A	413	-	-	0/7/7/12	-
4	MYS	A	407	-	-	0/5/5/12	-
4	MYS	A	404	-	-	0/11/11/12	-
4	MYS	A	412	-	-	0/2/2/12	-

All (1) bond length outliers are listed below:

Mol	Chain	Res	Type	Atoms	Z	Observed(Å)	Ideal(Å)
2	A	401	OLC	C9-C10	3.59	1.52	1.31

All (6) bond angle outliers are listed below:

Mol	Chain	Res	Type	Atoms	Z	Observed(°)	Ideal(°)
4	A	404	MYS	C8-C7-C6	-2.88	99.82	114.42
2	A	401	OLC	C3-C2-C1	-2.39	104.94	113.62
4	A	406	MYS	C6-C5-C4	-2.33	102.58	114.42
4	A	404	MYS	C6-C5-C4	-2.15	103.50	114.42
2	A	401	OLC	O20-C1-C2	2.14	118.62	111.91
4	A	405	MYS	C9-C8-C7	-2.12	103.66	114.42

There are no chirality outliers.

All (5) torsion outliers are listed below:

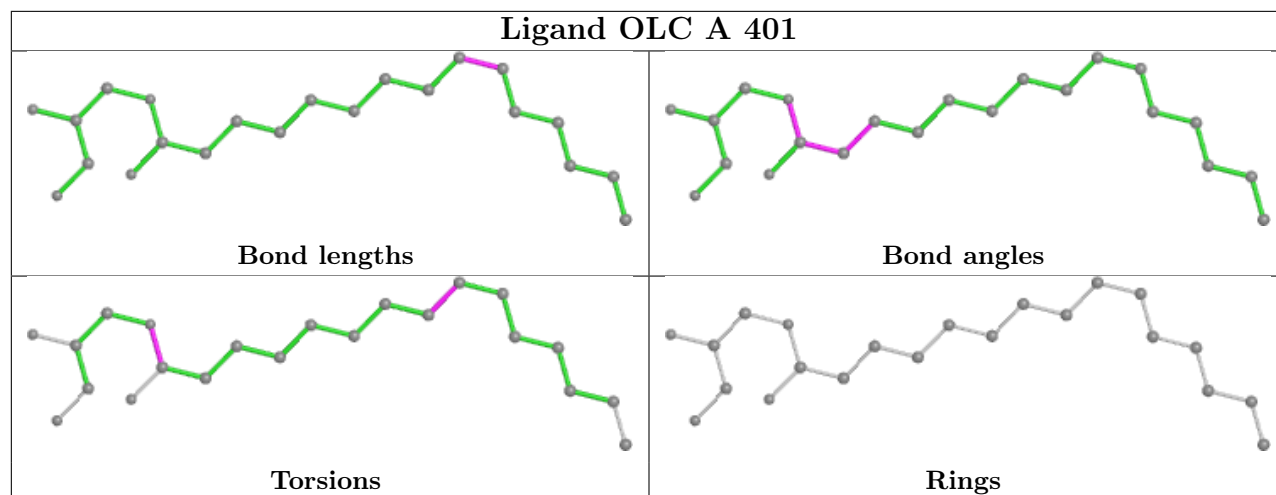
Mol	Chain	Res	Type	Atoms
2	A	401	OLC	C2-C1-O20-C21
2	A	401	OLC	O19-C1-O20-C21
6	A	420	1PE	C25-C15-OH6-C26
2	A	401	OLC	C7-C8-C9-C10
6	A	420	1PE	C14-C24-OH4-C13

There are no ring outliers.

9 monomers are involved in 15 short contacts:

Mol	Chain	Res	Type	Clashes	Symm-Clashes
4	A	405	MYS	2	0
2	A	401	OLC	1	0
5	A	419	ACT	1	0
6	A	420	1PE	6	0
4	A	416	MYS	2	0
4	A	406	MYS	1	0
4	A	408	MYS	1	0
4	A	407	MYS	1	0
4	A	404	MYS	1	0

The following is a two-dimensional graphical depiction of Mogul quality analysis of bond lengths, bond angles, torsion angles, and ring geometry for all instances of the Ligand of Interest. In addition, ligands with molecular weight > 250 and outliers as shown on the validation Tables will also be included. For torsion angles, if less than 5% of the Mogul distribution of torsion angles is within 10 degrees of the torsion angle in question, then that torsion angle is considered an outlier. Any bond that is central to one or more torsion angles identified as an outlier by Mogul will be highlighted in the graph. For rings, the root-mean-square deviation (RMSD) between the ring in question and similar rings identified by Mogul is calculated over all ring torsion angles. If the average RMSD is greater than 60 degrees and the minimal RMSD between the ring in question and any Mogul-identified rings is also greater than 60 degrees, then that ring is considered an outlier. The outliers are highlighted in purple. The color gray indicates Mogul did not find sufficient equivalents in the CSD to analyse the geometry.



## 5.7 Other polymers [i](#)

There are no such residues in this entry.

## 5.8 Polymer linkage issues [i](#)

There are no chain breaks in this entry.



## 6 Fit of model and data [i](#)

### 6.1 Protein, DNA and RNA chains [i](#)

In the following table, the column labelled ‘#RSRZ> 2’ contains the number (and percentage) of RSRZ outliers, followed by percent RSRZ outliers for the chain as percentile scores relative to all X-ray entries and entries of similar resolution. The OWAB column contains the minimum, median, 95<sup>th</sup> percentile and maximum values of the occupancy-weighted average B-factor per residue. The column labelled ‘Q< 0.9’ lists the number of (and percentage) of residues with an average occupancy less than 0.9.

Mol	Chain	Analysed	<RSRZ>	#RSRZ>2	OWAB(Å <sup>2</sup> )	Q<0.9
1	A	300/300 (100%)	0.12	13 (4%) 35 41	23, 31, 50, 75	0

All (13) RSRZ outliers are listed below:

Mol	Chain	Res	Type	RSRZ
1	A	300	ARG	4.5
1	A	60	TYR	4.4
1	A	150	ILE	4.4
1	A	152	GLU	3.8
1	A	154	ASN	3.7
1	A	149	GLU	3.5
1	A	148	ALA	3.4
1	A	200	ILE	3.2
1	A	153	ASN	3.2
1	A	121	ASP	2.6
1	A	63	TYR	2.2
1	A	34	PHE	2.1
1	A	252	MET	2.1

### 6.2 Non-standard residues in protein, DNA, RNA chains [i](#)

There are no non-standard protein/DNA/RNA residues in this entry.

### 6.3 Carbohydrates [i](#)

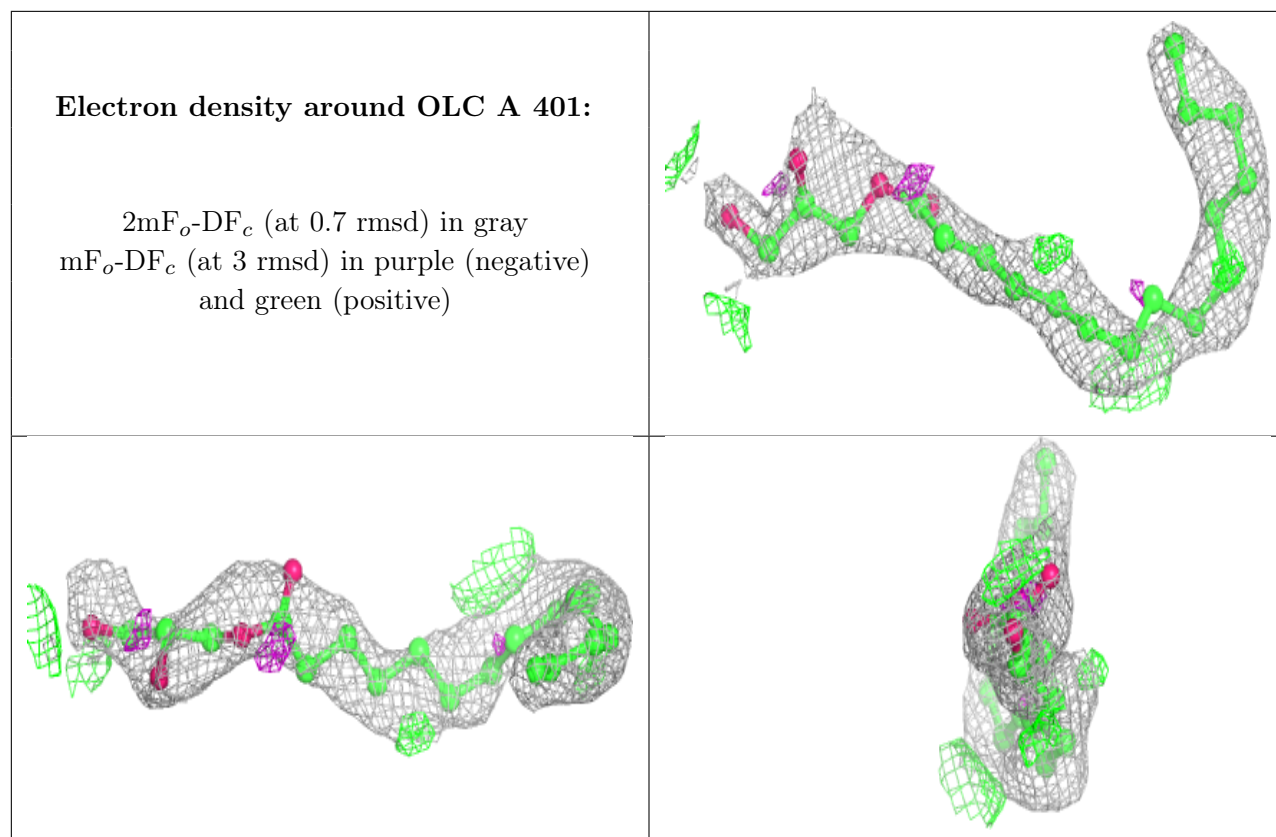
There are no monosaccharides in this entry.

## 6.4 Ligands

In the following table, the Atoms column lists the number of modelled atoms in the group and the number defined in the chemical component dictionary. The B-factors column lists the minimum, median, 95<sup>th</sup> percentile and maximum values of B factors of atoms in the group. The column labelled 'Q< 0.9' lists the number of atoms with occupancy less than 0.9.

Mol	Type	Chain	Res	Atoms	RSCC	RSR	B-factors(Å <sup>2</sup> )	Q<0.9
4	MYS	A	412	5/15	0.53	0.45	48,53,61,63	0
4	MYS	A	407	8/15	0.54	0.49	64,73,76,77	0
4	MYS	A	418	4/15	0.55	0.25	61,67,69,69	0
4	MYS	A	415	7/15	0.64	0.24	48,50,54,55	0
4	MYS	A	405	15/15	0.65	0.30	43,54,63,65	0
4	MYS	A	406	11/15	0.67	0.36	45,47,52,53	0
5	ACT	A	419	4/4	0.67	0.32	53,62,63,74	0
4	MYS	A	413	10/15	0.69	0.29	54,58,62,64	0
4	MYS	A	410	6/15	0.69	0.19	59,62,64,78	0
4	MYS	A	408	9/15	0.72	0.28	41,45,53,55	0
2	OLC	A	401	22/25	0.75	0.30	38,54,65,75	0
4	MYS	A	404	14/15	0.77	0.27	40,46,61,62	0
4	MYS	A	409	6/15	0.80	0.26	46,51,53,53	0
6	1PE	A	420	13/16	0.80	0.22	37,52,66,69	0
4	MYS	A	416	7/15	0.83	0.19	49,54,60,63	0
4	MYS	A	411	5/15	0.83	0.14	50,52,59,62	0
4	MYS	A	417	4/15	0.85	0.17	59,59,61,61	0
3	NA	A	403	1/1	0.86	0.09	33,33,33,33	1
4	MYS	A	414	4/15	0.91	0.16	44,51,51,58	0
3	NA	A	402	1/1	0.96	0.11	29,29,29,29	0

The following is a graphical depiction of the model fit to experimental electron density of all instances of the Ligand of Interest. In addition, ligands with molecular weight > 250 and outliers as shown on the geometry validation Tables will also be included. Each fit is shown from different orientation to approximate a three-dimensional view.



## 6.5 Other polymers [i](#)

There are no such residues in this entry.