



Full wwPDB X-ray Structure Validation Report ⓘ

Oct 31, 2023 – 07:42 PM JST

PDB ID : 5GVM
Title : Plasmodium vivax SHMT bound with PLP-glycine and GS557
Authors : Chitnumsub, P.; Jaruwat, A.; Leartsakulpanich, U.; Schwertz, G.
Deposited on : 2016-09-06
Resolution : 2.24 Å(reported)

This is a Full wwPDB X-ray Structure Validation Report for a publicly released PDB entry.

We welcome your comments at validation@mail.wwpdb.org

A user guide is available at

<https://www.wwpdb.org/validation/2017/XrayValidationReportHelp>

with specific help available everywhere you see the ⓘ symbol.

The types of validation reports are described at

<http://www.wwpdb.org/validation/2017/FAQs#types>.

The following versions of software and data (see [references ⓘ](#)) were used in the production of this report:

MolProbity : 4.02b-467
Mogul : 1.8.5 (274361), CSD as541be (2020)
Xtriage (Phenix) : 1.13
EDS : 2.36
buster-report : 1.1.7 (2018)
Percentile statistics : 20191225.v01 (using entries in the PDB archive December 25th 2019)
Refmac : 5.8.0158
CCP4 : 7.0.044 (Gargrove)
Ideal geometry (proteins) : Engh & Huber (2001)
Ideal geometry (DNA, RNA) : Parkinson et al. (1996)
Validation Pipeline (wwPDB-VP) : 2.36

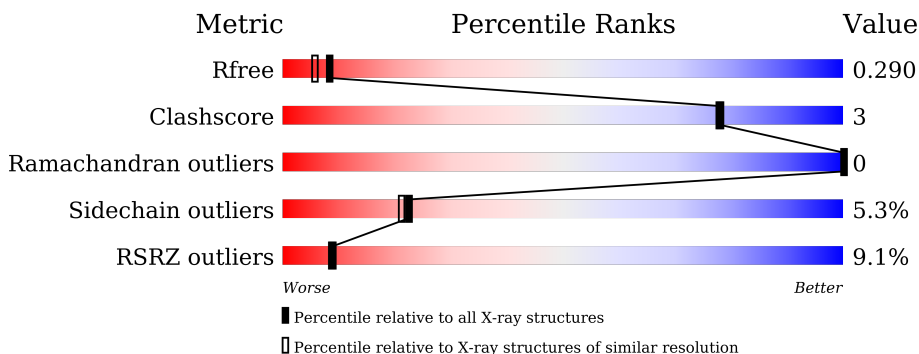
1 Overall quality at a glance

The following experimental techniques were used to determine the structure:

X-RAY DIFFRACTION

The reported resolution of this entry is 2.24 Å.

Percentile scores (ranging between 0-100) for global validation metrics of the entry are shown in the following graphic. The table shows the number of entries on which the scores are based.



Metric	Whole archive (#Entries)	Similar resolution (#Entries, resolution range(Å))
R_{free}	130704	2391 (2.26-2.22)
Clashscore	141614	2539 (2.26-2.22)
Ramachandran outliers	138981	2489 (2.26-2.22)
Sidechain outliers	138945	2490 (2.26-2.22)
RSRZ outliers	127900	2353 (2.26-2.22)

The table below summarises the geometric issues observed across the polymeric chains and their fit to the electron density. The red, orange, yellow and green segments of the lower bar indicate the fraction of residues that contain outliers for ≥ 3 , 2, 1 and 0 types of geometric quality criteria respectively. A grey segment represents the fraction of residues that are not modelled. The numeric value for each fraction is indicated below the corresponding segment, with a dot representing fractions $\leq 5\%$. The upper red bar (where present) indicates the fraction of residues that have poor fit to the electron density. The numeric value is given above the bar.

Mol	Chain	Length	Quality of chain
1	A	442	
1	B	442	
1	C	442	

2 Entry composition i

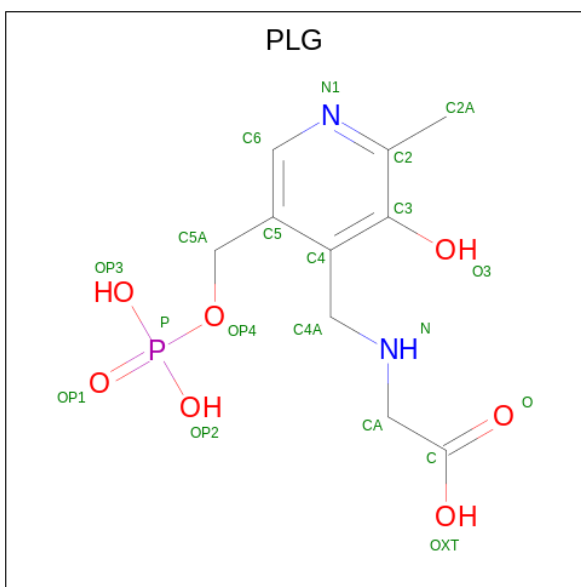
There are 5 unique types of molecules in this entry. The entry contains 10798 atoms, of which 0 are hydrogens and 0 are deuteriums.

In the tables below, the ZeroOcc column contains the number of atoms modelled with zero occupancy, the AltConf column contains the number of residues with at least one atom in alternate conformation and the Trace column contains the number of residues modelled with at most 2 atoms.

- Molecule 1 is a protein called Serine hydroxymethyltransferase, putative.

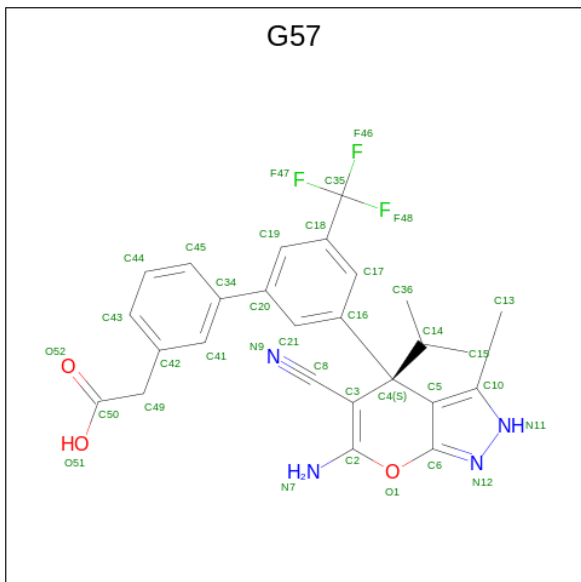
Mol	Chain	Residues	Atoms					ZeroOcc	AltConf	Trace
			Total	C	N	O	S			
1	A	442	Total 3458	C 2186	N 600	O 655	S 17	0	0	0
1	B	442	Total 3458	C 2186	N 600	O 655	S 17	0	0	0
1	C	442	Total 3458	C 2186	N 600	O 655	S 17	0	0	0

- Molecule 2 is N-GLYCINE-[3-HYDROXY-2-METHYL-5-PHOSPHONOXYMETHYL-PYRIDIN-4-YL-METHANE] (three-letter code: PLG) (formula: C₁₀H₁₅N₂O₇P).



Mol	Chain	Residues	Atoms					ZeroOcc	AltConf
			Total	C	N	O	P		
2	A	1	Total 20	C 10	N 2	O 7	P 1	0	0
2	B	1	Total 20	C 10	N 2	O 7	P 1	0	0
2	C	1	Total 20	C 10	N 2	O 7	P 1	0	0

- Molecule 3 is 2-[3-[3-[(4 {S})-6-azanyl-5-cyano-3-methyl-4-propan-2-yl-2 {H}-pyrano[2,3-c]pyrazol-4-yl]-5-(trifluoromethyl)phenyl]phenyl]ethanoic acid (three-letter code: G57) (formula: C₂₆H₂₃F₃N₄O₃).



Mol	Chain	Residues	Atoms				ZeroOcc	AltConf	
3	A	1	Total	C	F	N	O	0	0
			36	26	3	4	3		
3	B	1	Total	C	F	N	O	0	0
			36	26	3	4	3		
3	C	1	Total	C	F	N	O	0	0
			36	26	3	4	3		

- Molecule 4 is CHLORIDE ION (three-letter code: CL) (formula: Cl).

Mol	Chain	Residues	Atoms		ZeroOcc	AltConf
4	A	1	Total	Cl	0	0
			1	1		
4	C	1	Total	Cl	0	0
			1	1		

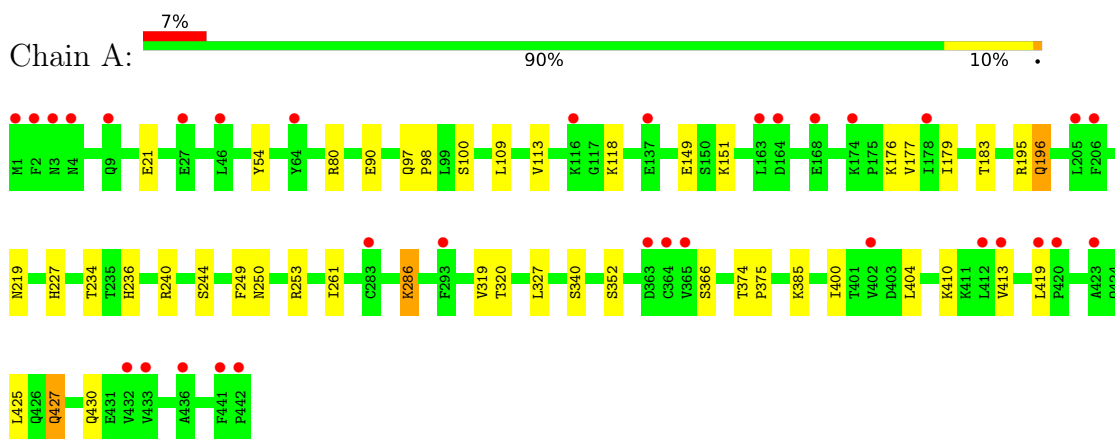
- Molecule 5 is water.

Mol	Chain	Residues	Atoms		ZeroOcc	AltConf
5	A	88	Total	O	0	0
			88	88		
5	B	85	Total	O	0	0
			85	85		
5	C	81	Total	O	0	0
			81	81		

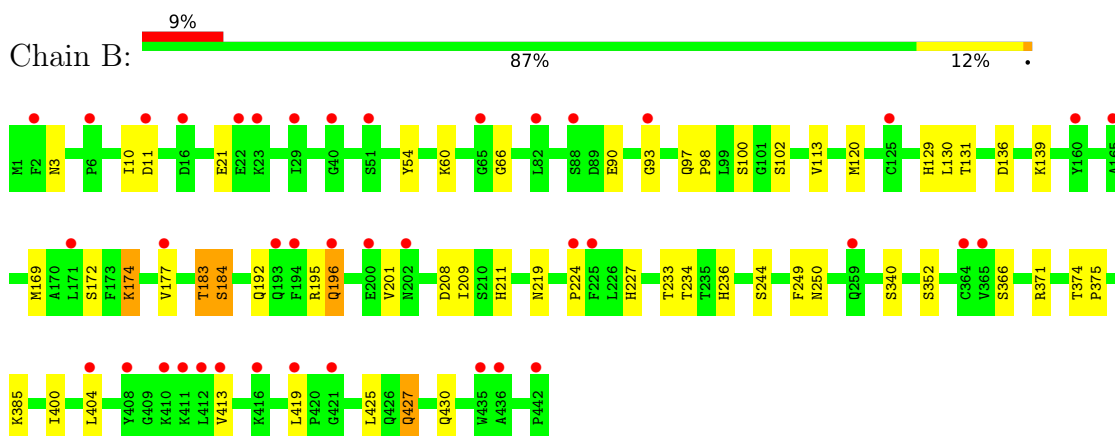
3 Residue-property plots [i](#)

These plots are drawn for all protein, RNA, DNA and oligosaccharide chains in the entry. The first graphic for a chain summarises the proportions of the various outlier classes displayed in the second graphic. The second graphic shows the sequence view annotated by issues in geometry and electron density. Residues are color-coded according to the number of geometric quality criteria for which they contain at least one outlier: green = 0, yellow = 1, orange = 2 and red = 3 or more. A red dot above a residue indicates a poor fit to the electron density ($RSRZ > 2$). Stretches of 2 or more consecutive residues without any outlier are shown as a green connector. Residues present in the sample, but not in the model, are shown in grey.

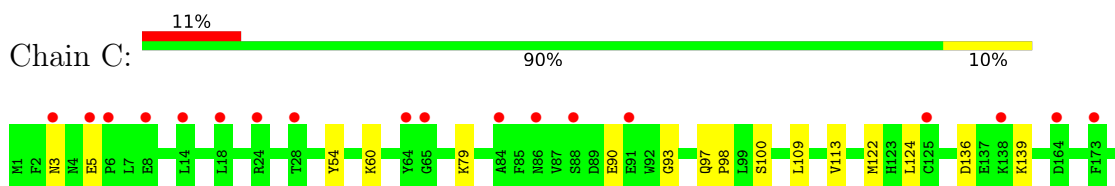
- Molecule 1: Serine hydroxymethyltransferase, putative

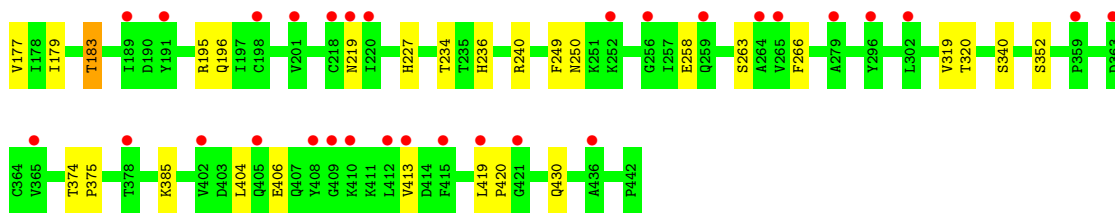


- Molecule 1: Serine hydroxymethyltransferase, putative



- Molecule 1: Serine hydroxymethyltransferase, putative





4 Data and refinement statistics i

Property	Value	Source
Space group	C 1 2 1	Depositor
Cell constants a, b, c, α , β , γ	101.86Å 58.79Å 234.06Å 90.00° 90.03° 90.00°	Depositor
Resolution (Å)	50.01 – 2.24 49.76 – 2.24	Depositor EDS
% Data completeness (in resolution range)	93.6 (50.01-2.24) 93.6 (49.76-2.24)	Depositor EDS
R_{merge}	0.03	Depositor
R_{sym}	(Not available)	Depositor
$\langle I/\sigma(I) \rangle$ ¹	9.43 (at 2.25Å)	Xtriage
Refinement program	REFMAC 5.8.0103	Depositor
R, R_{free}	0.240 , 0.297 0.240 , 0.290	Depositor DCC
R_{free} test set	6361 reflections (10.09%)	wwPDB-VP
Wilson B-factor (Å ²)	27.5	Xtriage
Anisotropy	0.031	Xtriage
Bulk solvent k_{sol} (e/Å ³), B_{sol} (Å ²)	0.36 , 15.6	EDS
L-test for twinning ²	$\langle L \rangle = 0.51$, $\langle L^2 \rangle = 0.34$	Xtriage
Estimated twinning fraction	0.024 for -1/2*h-3/2*k,-1/2*h+1/2*k,-l 0.022 for -1/2*h+3/2*k,1/2*h+1/2*k,-l 0.467 for 1/2*h-3/2*k,-1/2*h-1/2*k,-l 0.469 for 1/2*h+3/2*k,1/2*h-1/2*k,-l 0.018 for -h,-k,l	Xtriage
F_o, F_c correlation	0.92	EDS
Total number of atoms	10798	wwPDB-VP
Average B, all atoms (Å ²)	30.0	wwPDB-VP

Xtriage's analysis on translational NCS is as follows: *The largest off-origin peak in the Patterson function is 4.45% of the height of the origin peak. No significant pseudotranslation is detected.*

¹Intensities estimated from amplitudes.

²Theoretical values of $\langle |L| \rangle$, $\langle L^2 \rangle$ for acentric reflections are 0.5, 0.333 respectively for untwinned datasets, and 0.375, 0.2 for perfectly twinned datasets.

5 Model quality [i](#)

5.1 Standard geometry [i](#)

Bond lengths and bond angles in the following residue types are not validated in this section: G57, PLG, CL

The Z score for a bond length (or angle) is the number of standard deviations the observed value is removed from the expected value. A bond length (or angle) with $|Z| > 5$ is considered an outlier worth inspection. RMSZ is the root-mean-square of all Z scores of the bond lengths (or angles).

Mol	Chain	Bond lengths		Bond angles	
		RMSZ	# Z >5	RMSZ	# Z >5
1	A	0.52	0/3521	0.68	1/4754 (0.0%)
1	B	0.52	0/3521	0.69	1/4754 (0.0%)
1	C	0.51	0/3521	0.68	0/4754
All	All	0.52	0/10563	0.68	2/14262 (0.0%)

There are no bond length outliers.

All (2) bond angle outliers are listed below:

Mol	Chain	Res	Type	Atoms	Z	Observed(°)	Ideal(°)
1	B	208	ASP	CB-CG-OD1	5.50	123.25	118.30
1	A	240	ARG	NE-CZ-NH1	5.01	122.80	120.30

There are no chirality outliers.

There are no planarity outliers.

5.2 Too-close contacts [i](#)

In the following table, the Non-H and H(model) columns list the number of non-hydrogen atoms and hydrogen atoms in the chain respectively. The H(added) column lists the number of hydrogen atoms added and optimized by MolProbity. The Clashes column lists the number of clashes within the asymmetric unit, whereas Symm-Clashes lists symmetry-related clashes.

Mol	Chain	Non-H	H(model)	H(added)	Clashes	Symm-Clashes
1	A	3458	0	3477	17	0
1	B	3458	0	3477	26	0
1	C	3458	0	3477	17	0
2	A	20	0	11	0	0
2	B	20	0	11	1	0
2	C	20	0	11	1	0

Continued on next page...

Continued from previous page...

Mol	Chain	Non-H	H(model)	H(added)	Clashes	Symm-Clashes
3	A	36	0	0	1	0
3	B	36	0	0	1	0
3	C	36	0	0	1	0
4	A	1	0	0	0	0
4	C	1	0	0	0	0
5	A	88	0	0	1	0
5	B	85	0	0	3	0
5	C	81	0	0	3	0
All	All	10798	0	10464	61	0

The all-atom clashscore is defined as the number of clashes found per 1000 atoms (including hydrogen atoms). The all-atom clashscore for this structure is 3.

All (61) close contacts within the same asymmetric unit are listed below, sorted by their clash magnitude.

Atom-1	Atom-2	Interatomic distance (Å)	Clash overlap (Å)
1:B:196:GLN:NE2	5:B:602:HOH:O	2.31	0.60
1:B:234:THR:HB	1:B:236:HIS:CE1	2.38	0.59
1:A:427:GLN:HE21	1:A:427:GLN:HA	1.68	0.57
1:B:130:LEU:HD12	5:B:624:HOH:O	2.02	0.57
1:A:427:GLN:HA	1:A:427:GLN:NE2	2.22	0.55
1:A:234:THR:HB	1:A:236:HIS:CE1	2.42	0.55
1:C:319:VAL:HG12	1:C:320:THR:HG23	1.90	0.54
1:B:195:ARG:HB2	1:B:227:HIS:HB3	1.90	0.53
1:B:174:LYS:HE3	1:B:201:VAL:HG13	1.92	0.52
1:C:109:LEU:HD21	1:C:179:ILE:HD11	1.93	0.51
1:B:404:LEU:CD1	1:B:419:LEU:HD23	2.41	0.51
1:A:319:VAL:HG12	1:A:320:THR:HG23	1.93	0.51
1:B:3:ASN:ND2	1:B:10:ILE:HD13	2.26	0.51
1:C:195:ARG:HB2	1:C:227:HIS:HB3	1.92	0.51
3:C:502:G57:C17	3:C:502:G57:C8	2.89	0.50
1:B:184:SER:HB3	1:B:371:ARG:HD3	1.95	0.49
3:A:502:G57:C17	3:A:502:G57:C8	2.90	0.48
1:A:249:PHE:HB3	1:A:261:ILE:HD12	1.95	0.48
1:C:240:ARG:HD3	5:C:678:HOH:O	2.13	0.48
1:C:234:THR:HB	1:C:236:HIS:CE1	2.49	0.47
1:A:400:ILE:HG21	1:A:425:LEU:HD21	1.95	0.47
1:B:183:THR:HB	2:B:501:PLG:O3	2.15	0.47
1:B:201:VAL:HG12	1:B:201:VAL:O	2.14	0.47
3:B:502:G57:C17	3:B:502:G57:C8	2.92	0.46
1:C:196:GLN:NE2	5:C:602:HOH:O	2.37	0.46

Continued on next page...

Continued from previous page...

Atom-1	Atom-2	Interatomic distance (Å)	Clash overlap (Å)
1:B:93:GLY:HA3	1:B:249:PHE:CE1	2.50	0.46
1:A:113:VAL:CG1	1:A:177:VAL:HG23	2.46	0.45
1:A:80:ARG:NH1	1:B:11:ASP:OD2	2.44	0.45
1:A:195:ARG:HB2	1:A:227:HIS:HB3	1.99	0.45
1:B:97:GLN:N	1:B:98:PRO:CD	2.80	0.45
1:B:374:THR:N	1:B:375:PRO:CD	2.80	0.44
1:A:404:LEU:CD1	1:A:419:LEU:HD23	2.48	0.44
1:B:209:ILE:HG13	1:B:233:THR:HB	2.00	0.44
1:B:400:ILE:HG21	1:B:425:LEU:HD21	1.99	0.44
1:B:66:GLY:N	5:B:604:HOH:O	2.51	0.43
1:C:113:VAL:CG1	1:C:177:VAL:HG23	2.48	0.43
1:A:374:THR:N	1:A:375:PRO:CD	2.82	0.43
1:B:120:MET:HG2	1:B:169:MET:HE3	2.00	0.43
1:A:109:LEU:HD21	1:A:179:ILE:HD11	2.00	0.43
1:C:79:LYS:NZ	5:C:601:HOH:O	2.08	0.43
1:C:183:THR:HB	2:C:501:PLG:O3	2.18	0.43
1:B:113:VAL:CG1	1:B:177:VAL:HG23	2.48	0.42
1:C:374:THR:N	1:C:375:PRO:CD	2.82	0.42
1:C:404:LEU:CD1	1:C:419:LEU:HD23	2.50	0.42
1:C:249:PHE:CE2	1:C:258:GLU:HA	2.54	0.42
1:B:209:ILE:HG21	1:B:224:PRO:HG3	2.02	0.42
1:A:196:GLN:NE2	5:A:601:HOH:O	2.41	0.42
1:A:286:LYS:NZ	1:B:10:ILE:O	2.53	0.42
1:C:97:GLN:N	1:C:98:PRO:CD	2.83	0.41
1:B:427:GLN:NE2	1:B:427:GLN:HA	2.34	0.41
1:B:427:GLN:HA	1:B:427:GLN:HE21	1.85	0.41
1:C:3:ASN:OD1	1:C:5:GLU:HG2	2.21	0.41
1:A:113:VAL:HG12	1:A:176:LYS:HB3	2.02	0.41
1:B:183:THR:HA	1:B:211:HIS:CD2	2.56	0.41
1:A:97:GLN:N	1:A:98:PRO:CD	2.84	0.41
1:C:263:SER:HA	1:C:266:PHE:O	2.20	0.41
1:B:102:SER:HA	1:B:131:THR:HG21	2.03	0.41
1:B:129:HIS:HA	1:B:183:THR:HG21	2.03	0.41
1:A:118:LYS:HA	1:A:149:GLU:O	2.21	0.40
1:C:93:GLY:HA3	1:C:249:PHE:CE2	2.56	0.40
1:C:419:LEU:HB2	1:C:420:PRO:HD3	2.04	0.40

There are no symmetry-related clashes.

5.3 Torsion angles [i](#)

5.3.1 Protein backbone [i](#)

In the following table, the Percentiles column shows the percent Ramachandran outliers of the chain as a percentile score with respect to all X-ray entries followed by that with respect to entries of similar resolution.

The Analysed column shows the number of residues for which the backbone conformation was analysed, and the total number of residues.

Mol	Chain	Analysed	Favoured	Allowed	Outliers	Percentiles	
1	A	440/442 (100%)	428 (97%)	12 (3%)	0	100	100
1	B	440/442 (100%)	430 (98%)	10 (2%)	0	100	100
1	C	440/442 (100%)	428 (97%)	12 (3%)	0	100	100
All	All	1320/1326 (100%)	1286 (97%)	34 (3%)	0	100	100

There are no Ramachandran outliers to report.

5.3.2 Protein sidechains [i](#)

In the following table, the Percentiles column shows the percent sidechain outliers of the chain as a percentile score with respect to all X-ray entries followed by that with respect to entries of similar resolution.

The Analysed column shows the number of residues for which the sidechain conformation was analysed, and the total number of residues.

Mol	Chain	Analysed	Rotameric	Outliers	Percentiles	
1	A	381/381 (100%)	360 (94%)	21 (6%)	21	20
1	B	381/381 (100%)	358 (94%)	23 (6%)	19	17
1	C	381/381 (100%)	364 (96%)	17 (4%)	27	29
All	All	1143/1143 (100%)	1082 (95%)	61 (5%)	22	21

All (61) residues with a non-rotameric sidechain are listed below:

Mol	Chain	Res	Type
1	A	21	GLU
1	A	54	TYR
1	A	90	GLU
1	A	100	SER
1	A	151	LYS

Continued on next page...

Continued from previous page...

Mol	Chain	Res	Type
1	A	183	THR
1	A	196	GLN
1	A	219	ASN
1	A	244	SER
1	A	250	ASN
1	A	253	ARG
1	A	286	LYS
1	A	327	LEU
1	A	340	SER
1	A	352	SER
1	A	366	SER
1	A	385	LYS
1	A	410	LYS
1	A	413	VAL
1	A	427	GLN
1	A	430	GLN
1	B	21	GLU
1	B	54	TYR
1	B	60	LYS
1	B	90	GLU
1	B	100	SER
1	B	136	ASP
1	B	139	LYS
1	B	172	SER
1	B	174	LYS
1	B	183	THR
1	B	184	SER
1	B	192	GLN
1	B	196	GLN
1	B	219	ASN
1	B	244	SER
1	B	250	ASN
1	B	340	SER
1	B	352	SER
1	B	366	SER
1	B	385	LYS
1	B	413	VAL
1	B	427	GLN
1	B	430	GLN
1	C	54	TYR
1	C	60	LYS
1	C	90	GLU

Continued on next page...

Continued from previous page...

Mol	Chain	Res	Type
1	C	100	SER
1	C	122	MET
1	C	124	LEU
1	C	136	ASP
1	C	139	LYS
1	C	183	THR
1	C	219	ASN
1	C	250	ASN
1	C	340	SER
1	C	352	SER
1	C	385	LYS
1	C	406	GLU
1	C	413	VAL
1	C	430	GLN

Sometimes sidechains can be flipped to improve hydrogen bonding and reduce clashes. All (6) such sidechains are listed below:

Mol	Chain	Res	Type
1	A	427	GLN
1	B	427	GLN
1	B	430	GLN
1	C	227	HIS
1	C	427	GLN
1	C	430	GLN

5.3.3 RNA [i](#)

There are no RNA molecules in this entry.

5.4 Non-standard residues in protein, DNA, RNA chains [i](#)

There are no non-standard protein/DNA/RNA residues in this entry.

5.5 Carbohydrates [i](#)

There are no monosaccharides in this entry.

5.6 Ligand geometry

Of 8 ligands modelled in this entry, 2 are monoatomic - leaving 6 for Mogul analysis.

In the following table, the Counts columns list the number of bonds (or angles) for which Mogul statistics could be retrieved, the number of bonds (or angles) that are observed in the model and the number of bonds (or angles) that are defined in the Chemical Component Dictionary. The Link column lists molecule types, if any, to which the group is linked. The Z score for a bond length (or angle) is the number of standard deviations the observed value is removed from the expected value. A bond length (or angle) with $|Z| > 2$ is considered an outlier worth inspection. RMSZ is the root-mean-square of all Z scores of the bond lengths (or angles).

Mol	Type	Chain	Res	Link	Bond lengths			Bond angles		
					Counts	RMSZ	# Z > 2	Counts	RMSZ	# Z > 2
2	PLG	C	501	-	20,20,20	2.64	3 (15%)	25,28,28	2.60	8 (32%)
2	PLG	A	501	-	20,20,20	2.56	3 (15%)	25,28,28	2.34	10 (40%)
3	G57	A	502	-	34,39,39	2.37	3 (8%)	47,60,60	1.61	8 (17%)
3	G57	B	502	-	34,39,39	2.43	2 (5%)	47,60,60	1.80	9 (19%)
2	PLG	B	501	-	20,20,20	2.65	3 (15%)	25,28,28	2.42	6 (24%)
3	G57	C	502	-	34,39,39	2.34	2 (5%)	47,60,60	1.52	9 (19%)

In the following table, the Chirals column lists the number of chiral outliers, the number of chiral centers analysed, the number of these observed in the model and the number defined in the Chemical Component Dictionary. Similar counts are reported in the Torsion and Rings columns. '-' means no outliers of that kind were identified.

Mol	Type	Chain	Res	Link	Chirals	Torsions	Rings
2	PLG	C	501	-	-	8/12/12/12	0/1/1/1
2	PLG	A	501	-	-	8/12/12/12	0/1/1/1
3	G57	A	502	-	-	7/26/48/48	0/4/4/4
3	G57	B	502	-	-	6/26/48/48	0/4/4/4
2	PLG	B	501	-	-	7/12/12/12	0/1/1/1
3	G57	C	502	-	-	3/26/48/48	0/4/4/4

All (16) bond length outliers are listed below:

Mol	Chain	Res	Type	Atoms	Z	Observed(Å)	Ideal(Å)
3	A	502	G57	C8-C3	-11.60	1.26	1.42
3	B	502	G57	C8-C3	-11.52	1.26	1.42
3	C	502	G57	C8-C3	-11.39	1.27	1.42
2	B	501	PLG	C3-C2	8.29	1.49	1.40
2	C	501	PLG	C3-C2	7.74	1.48	1.40

Continued on next page...

Continued from previous page...

Mol	Chain	Res	Type	Atoms	Z	Observed(Å)	Ideal(Å)
2	A	501	PLG	C3-C2	7.62	1.48	1.40
3	B	502	G57	O1-C2	6.71	1.44	1.36
2	C	501	PLG	C3-C4	5.99	1.49	1.40
3	A	502	G57	O1-C2	5.98	1.43	1.36
3	C	502	G57	O1-C2	5.82	1.43	1.36
2	B	501	PLG	C3-C4	5.77	1.48	1.40
2	A	501	PLG	C3-C4	5.62	1.48	1.40
2	C	501	PLG	C5-C4	5.50	1.48	1.40
2	A	501	PLG	C5-C4	5.27	1.47	1.40
2	B	501	PLG	C5-C4	5.17	1.47	1.40
3	A	502	G57	O1-C6	-2.05	1.35	1.38

All (50) bond angle outliers are listed below:

Mol	Chain	Res	Type	Atoms	Z	Observed(°)	Ideal(°)
2	C	501	PLG	C4A-N-CA	9.83	122.84	112.58
2	B	501	PLG	C4A-N-CA	8.95	121.92	112.58
2	A	501	PLG	C4A-N-CA	8.31	121.25	112.58
3	B	502	G57	O1-C2-N7	6.94	115.21	110.22
3	A	502	G57	O1-C2-N7	5.81	114.39	110.22
2	B	501	PLG	C4A-C4-C3	4.18	124.52	120.04
3	C	502	G57	O1-C2-N7	4.00	113.09	110.22
2	C	501	PLG	C4A-C4-C3	3.87	124.19	120.04
3	C	502	G57	C15-C14-C4	3.56	116.22	112.40
3	B	502	G57	C3-C2-N7	-3.53	123.94	127.47
3	B	502	G57	C15-C14-C4	3.40	116.05	112.40
3	A	502	G57	C3-C2-N7	-3.36	124.11	127.47
3	B	502	G57	C13-C10-N11	3.20	126.69	119.65
2	C	501	PLG	C3-C4-C5	-3.16	115.69	118.72
2	A	501	PLG	OP4-C5A-C5	3.07	115.20	109.35
3	B	502	G57	C5-C4-C3	2.96	110.37	104.34
3	C	502	G57	C13-C10-N11	2.92	126.06	119.65
2	B	501	PLG	OP4-C5A-C5	2.92	114.91	109.35
3	A	502	G57	C13-C10-N11	2.87	125.96	119.65
2	A	501	PLG	C4A-C4-C3	2.87	123.11	120.04
2	A	501	PLG	C6-N1-C2	2.84	124.42	119.17
3	B	502	G57	F46-C35-C18	-2.83	106.72	112.93
3	C	502	G57	C10-C5-C6	-2.83	101.03	104.01
2	B	501	PLG	C3-C4-C5	-2.82	116.01	118.72
2	B	501	PLG	C6-N1-C2	2.73	124.22	119.17
3	A	502	G57	C15-C14-C4	2.71	115.31	112.40
2	A	501	PLG	OP3-P-OP2	2.65	117.77	107.64

Continued on next page...

Continued from previous page...

Mol	Chain	Res	Type	Atoms	Z	Observed(°)	Ideal(°)
3	C	502	G57	C16-C4-C3	-2.58	102.22	109.33
2	C	501	PLG	OP3-P-OP2	2.58	117.51	107.64
2	C	501	PLG	OXT-C-CA	2.50	121.43	112.74
2	C	501	PLG	OP4-C5A-C5	2.49	114.10	109.35
2	A	501	PLG	OXT-C-CA	2.46	121.30	112.74
2	A	501	PLG	C3-C2-N1	-2.46	117.59	120.77
3	A	502	G57	F47-C35-C18	-2.45	107.54	112.93
3	B	502	G57	C6-O1-C2	2.42	121.01	118.38
3	B	502	G57	C14-C4-C3	-2.39	106.49	110.32
2	C	501	PLG	C6-N1-C2	2.37	123.56	119.17
3	C	502	G57	C3-C2-N7	-2.36	125.11	127.47
3	C	502	G57	F46-C35-C18	-2.36	107.74	112.93
3	A	502	G57	C10-C5-C6	-2.33	101.55	104.01
3	C	502	G57	F47-C35-C18	-2.26	107.97	112.93
2	A	501	PLG	C3-C4-C5	-2.19	116.62	118.72
2	C	501	PLG	OP3-P-OP4	-2.19	100.92	106.73
3	A	502	G57	C16-C4-C3	-2.18	103.34	109.33
3	B	502	G57	F47-C35-C18	-2.14	108.23	112.93
3	A	502	G57	C5-C4-C3	2.12	108.65	104.34
2	A	501	PLG	OP3-P-OP4	-2.10	101.13	106.73
3	C	502	G57	C45-C34-C20	-2.10	117.72	121.36
2	A	501	PLG	C2A-C2-N1	2.08	121.73	117.67
2	B	501	PLG	C3-C2-N1	-2.01	118.17	120.77

There are no chirality outliers.

All (39) torsion outliers are listed below:

Mol	Chain	Res	Type	Atoms
2	A	501	PLG	C5-C4-C4A-N
2	A	501	PLG	C5A-OP4-P-OP1
2	B	501	PLG	C5-C4-C4A-N
2	B	501	PLG	C5A-OP4-P-OP2
2	B	501	PLG	C5A-OP4-P-OP3
2	C	501	PLG	C5-C4-C4A-N
2	C	501	PLG	C5A-OP4-P-OP1
2	C	501	PLG	C5A-OP4-P-OP3
2	C	501	PLG	OXT-C-CA-N
2	A	501	PLG	C4-C4A-N-CA
2	B	501	PLG	C4-C4A-N-CA
2	C	501	PLG	C4-C4A-N-CA
2	A	501	PLG	OXT-C-CA-N
2	B	501	PLG	O-C-CA-N

Continued on next page...

Continued from previous page...

Mol	Chain	Res	Type	Atoms
2	B	501	PLG	OXT-C-CA-N
3	B	502	G57	C17-C16-C4-C5
3	A	502	G57	C42-C49-C50-O52
2	A	501	PLG	O-C-CA-N
2	C	501	PLG	O-C-CA-N
3	A	502	G57	C42-C49-C50-O51
3	C	502	G57	C42-C49-C50-O51
2	A	501	PLG	C3-C4-C4A-N
2	B	501	PLG	C3-C4-C4A-N
2	C	501	PLG	C3-C4-C4A-N
3	A	502	G57	C19-C20-C34-C45
3	A	502	G57	C17-C16-C4-C5
3	A	502	G57	C21-C16-C4-C5
3	B	502	G57	C21-C16-C4-C5
3	C	502	G57	C21-C16-C4-C5
2	A	501	PLG	C5A-OP4-P-OP2
2	A	501	PLG	C5A-OP4-P-OP3
2	C	501	PLG	C5A-OP4-P-OP2
3	B	502	G57	C42-C49-C50-O51
3	B	502	G57	C42-C49-C50-O52
3	A	502	G57	C15-C14-C4-C3
3	C	502	G57	C42-C49-C50-O52
3	A	502	G57	C21-C20-C34-C45
3	B	502	G57	C19-C20-C34-C45
3	B	502	G57	C21-C20-C34-C45

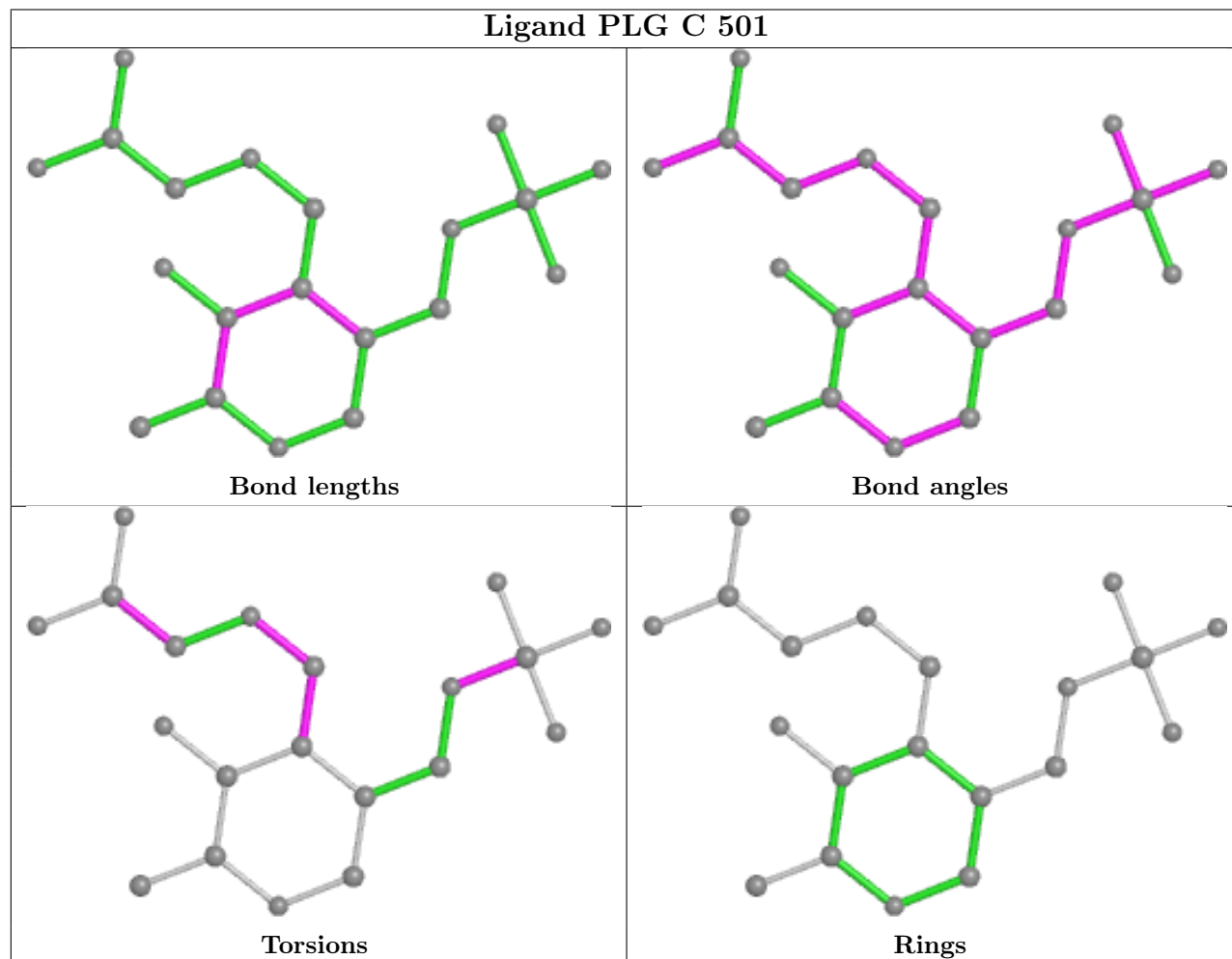
There are no ring outliers.

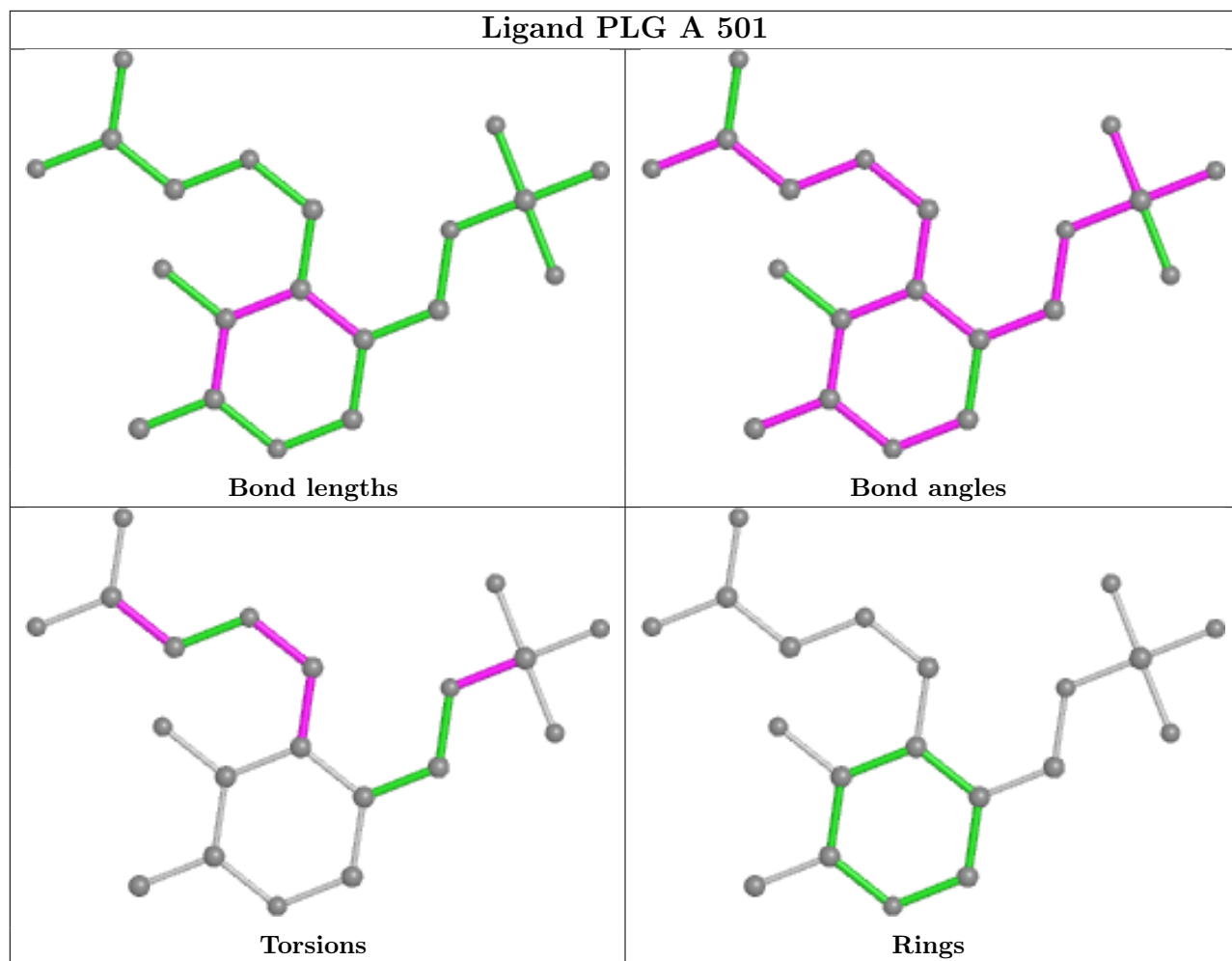
5 monomers are involved in 5 short contacts:

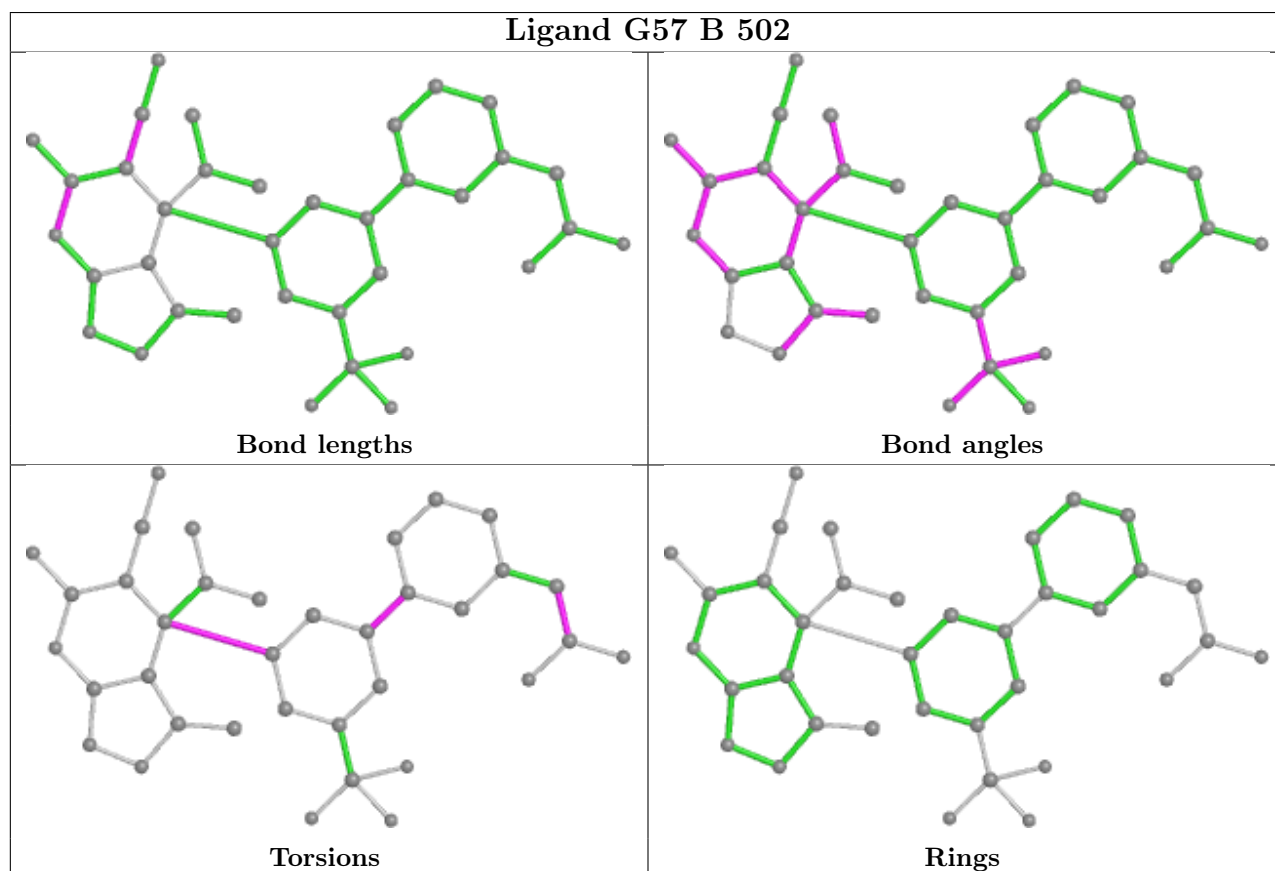
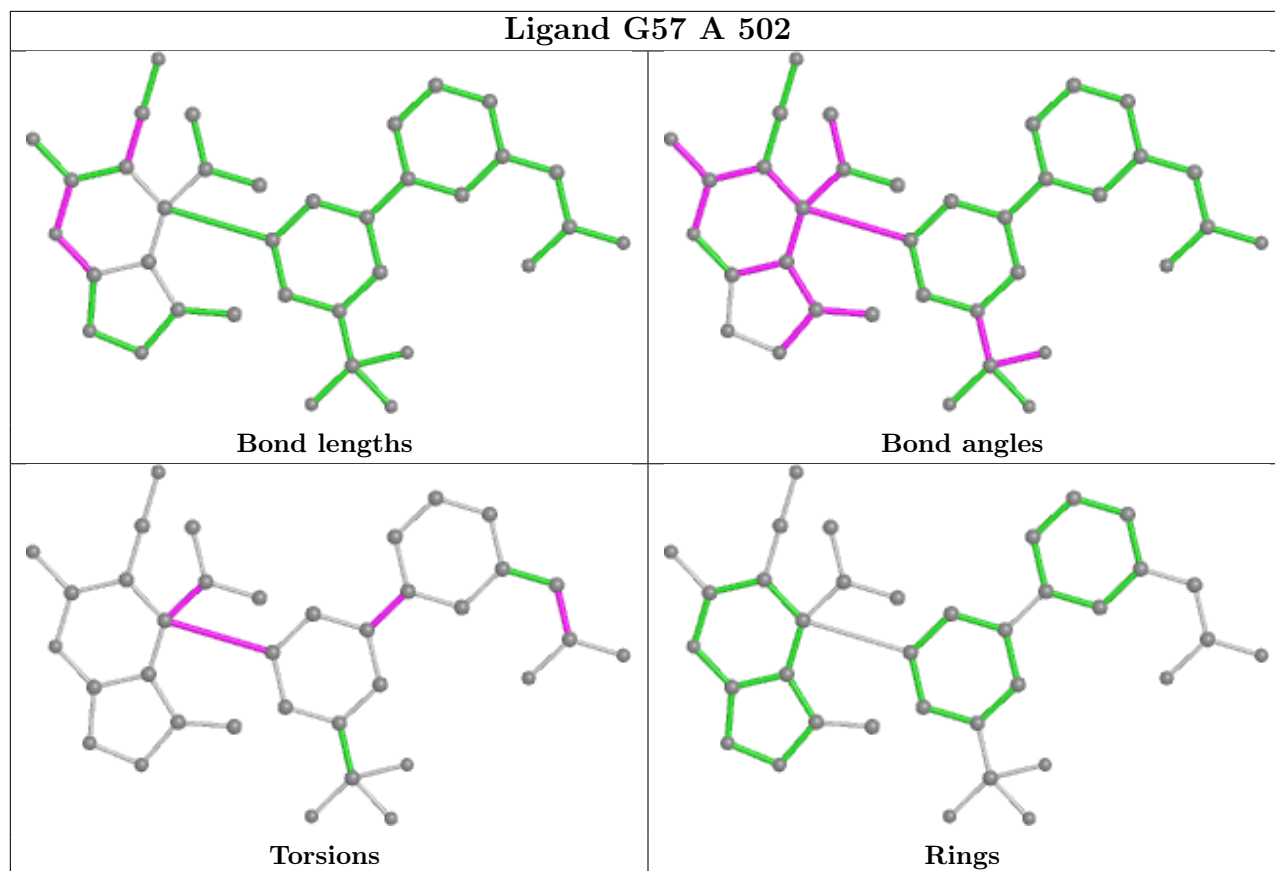
Mol	Chain	Res	Type	Clashes	Symm-Clashes
2	C	501	PLG	1	0
3	A	502	G57	1	0
3	B	502	G57	1	0
2	B	501	PLG	1	0
3	C	502	G57	1	0

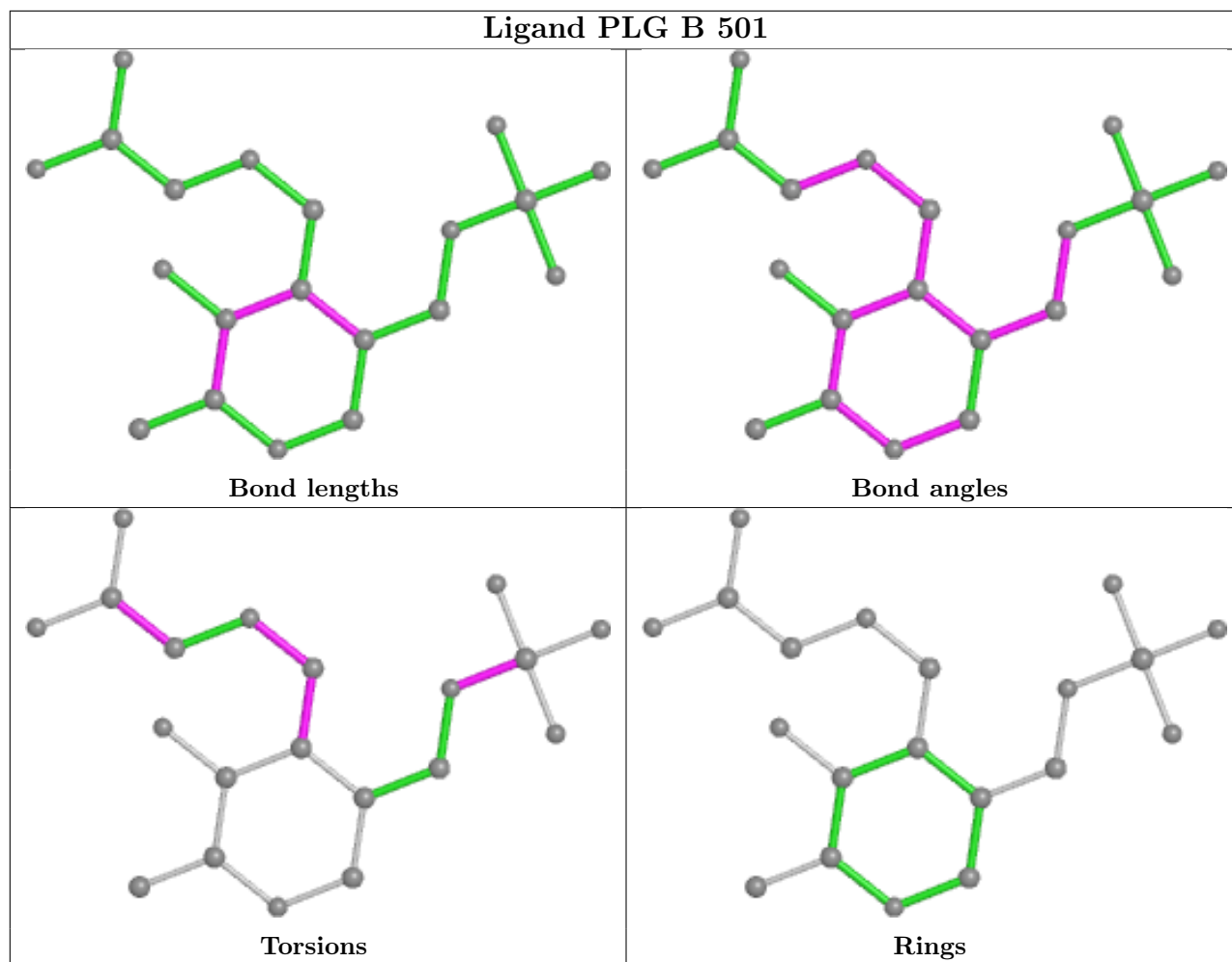
The following is a two-dimensional graphical depiction of Mogul quality analysis of bond lengths, bond angles, torsion angles, and ring geometry for all instances of the Ligand of Interest. In addition, ligands with molecular weight > 250 and outliers as shown on the validation Tables will also be included. For torsion angles, if less than 5% of the Mogul distribution of torsion angles is within 10 degrees of the torsion angle in question, then that torsion angle is considered an outlier. Any bond that is central to one or more torsion angles identified as an outlier by Mogul will be

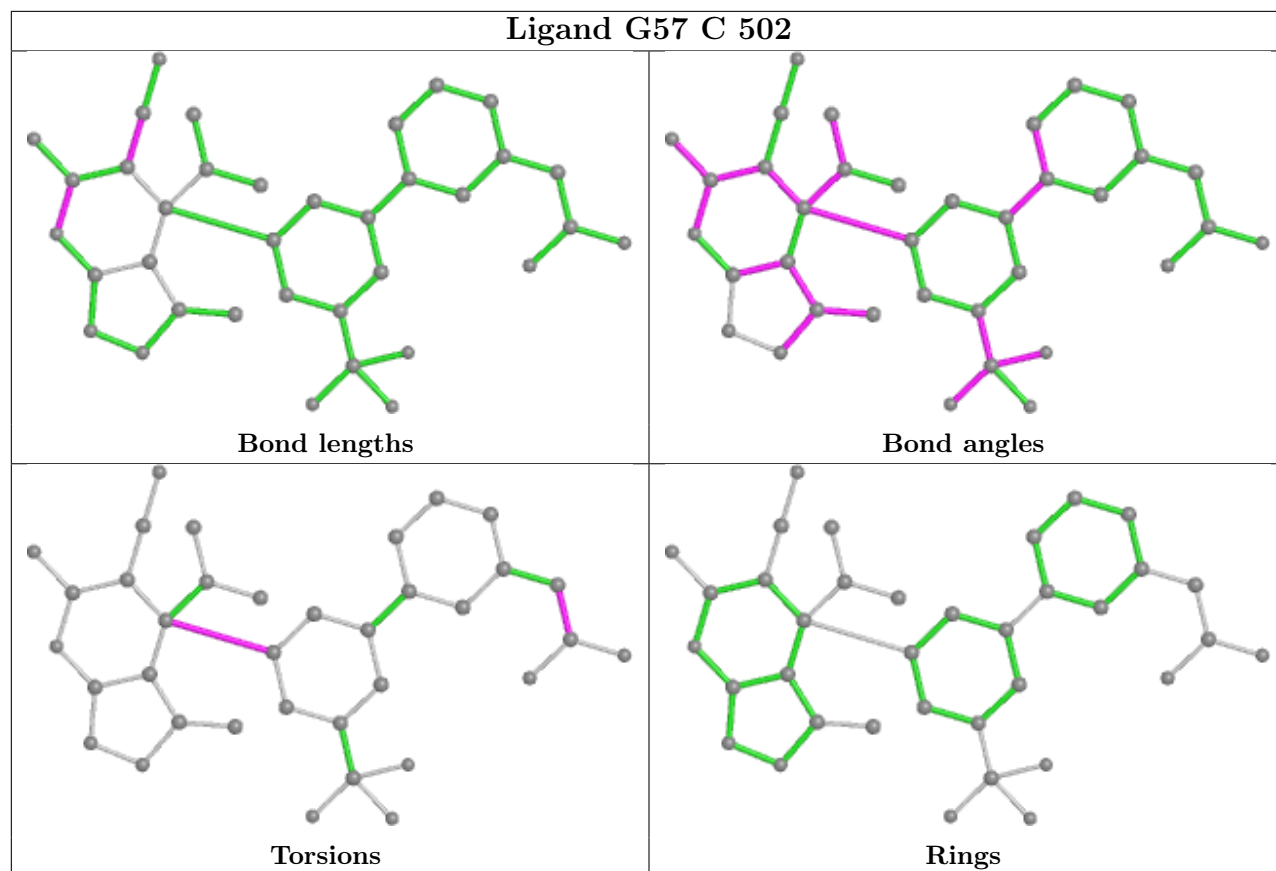
highlighted in the graph. For rings, the root-mean-square deviation (RMSD) between the ring in question and similar rings identified by Mogul is calculated over all ring torsion angles. If the average RMSD is greater than 60 degrees and the minimal RMSD between the ring in question and any Mogul-identified rings is also greater than 60 degrees, then that ring is considered an outlier. The outliers are highlighted in purple. The color gray indicates Mogul did not find sufficient equivalents in the CSD to analyse the geometry.











5.7 Other polymers [i](#)

There are no such residues in this entry.

5.8 Polymer linkage issues [i](#)

There are no chain breaks in this entry.

6 Fit of model and data

6.1 Protein, DNA and RNA chains

In the following table, the column labelled ‘#RSRZ > 2’ contains the number (and percentage) of RSRZ outliers, followed by percent RSRZ outliers for the chain as percentile scores relative to all X-ray entries and entries of similar resolution. The OWAB column contains the minimum, median, 95th percentile and maximum values of the occupancy-weighted average B-factor per residue. The column labelled ‘Q < 0.9’ lists the number of (and percentage) of residues with an average occupancy less than 0.9.

Mol	Chain	Analysed	<RSRZ>	#RSRZ>2	OWAB(Å ²)	Q<0.9
1	A	442/442 (100%)	0.71	33 (7%) 14 13	16, 28, 47, 66	0
1	B	442/442 (100%)	0.88	40 (9%) 9 9	16, 29, 47, 59	0
1	C	442/442 (100%)	0.90	48 (10%) 5 5	16, 29, 48, 61	0
All	All	1326/1326 (100%)	0.83	121 (9%) 9 9	16, 29, 48, 66	0

All (121) RSRZ outliers are listed below:

Mol	Chain	Res	Type	RSRZ
1	A	1	MET	5.1
1	B	125	CYS	4.7
1	B	259	GLN	4.2
1	A	363	ASP	4.2
1	A	423	ALA	4.2
1	A	64	TYR	4.1
1	C	413	VAL	3.9
1	C	412	LEU	3.9
1	B	442	PRO	3.8
1	C	64	TYR	3.7
1	B	365	VAL	3.7
1	A	4	ASN	3.6
1	A	436	ALA	3.6
1	C	363	ASP	3.5
1	B	412	LEU	3.4
1	B	88	SER	3.4
1	C	259	GLN	3.4
1	C	219	ASN	3.4
1	A	413	VAL	3.3
1	C	419	LEU	3.3
1	A	3	ASN	3.3
1	B	413	VAL	3.3
1	B	65	GLY	3.2

Continued on next page...

Continued from previous page...

Mol	Chain	Res	Type	RSRZ
1	C	296	TYR	3.2
1	A	419	LEU	3.2
1	B	22	GLU	3.1
1	C	138	LYS	3.1
1	B	364	CYS	3.1
1	A	9	GLN	3.1
1	B	51	SER	3.0
1	C	24	ARG	3.0
1	B	225	PHE	3.0
1	C	198	CYS	3.0
1	B	40	GLY	3.0
1	B	2	PHE	3.0
1	C	8	GLU	2.9
1	C	88	SER	2.9
1	A	46	LEU	2.9
1	B	11	ASP	2.9
1	C	256	GLY	2.9
1	B	177	VAL	2.8
1	C	5	GLU	2.8
1	B	408	TYR	2.8
1	C	421	GLY	2.8
1	B	23	LYS	2.7
1	C	173	PHE	2.7
1	B	6	PRO	2.6
1	B	16	ASP	2.6
1	A	402	VAL	2.6
1	C	365	VAL	2.6
1	C	86	ASN	2.6
1	C	415	PHE	2.6
1	A	137	GLU	2.6
1	A	442	PRO	2.6
1	C	18	LEU	2.6
1	C	201	VAL	2.6
1	B	410	LYS	2.6
1	A	365	VAL	2.5
1	A	2	PHE	2.5
1	B	194	PHE	2.5
1	B	200	GLU	2.5
1	C	191	TYR	2.5
1	A	27	GLU	2.5
1	C	252	LYS	2.5
1	B	193	GLN	2.5

Continued on next page...

Continued from previous page...

Mol	Chain	Res	Type	RSRZ
1	A	168	GLU	2.4
1	B	202	ASN	2.4
1	A	293	PHE	2.4
1	C	409	GLY	2.4
1	A	412	LEU	2.4
1	B	165	ALA	2.4
1	A	206	PHE	2.4
1	A	432	VAL	2.4
1	A	164	ASP	2.4
1	B	419	LEU	2.4
1	B	416	LYS	2.4
1	C	189	ILE	2.4
1	A	163	LEU	2.4
1	C	220	ILE	2.3
1	B	171	LEU	2.3
1	C	302	LEU	2.3
1	B	435	TRP	2.3
1	C	164	ASP	2.3
1	C	91	GLU	2.3
1	B	196	GLN	2.3
1	C	6	PRO	2.3
1	C	359	PRO	2.3
1	C	3	ASN	2.3
1	C	125	CYS	2.3
1	C	28	THR	2.3
1	C	65	GLY	2.3
1	B	82	LEU	2.3
1	C	264	ALA	2.3
1	B	421	GLY	2.2
1	A	174	LYS	2.2
1	C	402	VAL	2.2
1	B	436	ALA	2.2
1	C	279	ALA	2.2
1	C	410	LYS	2.2
1	A	364	CYS	2.2
1	A	205	LEU	2.2
1	A	283	CYS	2.1
1	B	404	LEU	2.1
1	A	433	VAL	2.1
1	C	436	ALA	2.1
1	A	116	LYS	2.1
1	A	420	PRO	2.1

Continued on next page...

Continued from previous page...

Mol	Chain	Res	Type	RSRZ
1	A	441	PHE	2.1
1	C	405	GLN	2.1
1	B	29	ILE	2.1
1	C	14	LEU	2.1
1	C	408	TYR	2.1
1	B	224	PRO	2.1
1	B	411	LYS	2.1
1	C	218	CYS	2.1
1	A	178	ILE	2.0
1	C	378	THR	2.0
1	B	160	TYR	2.0
1	B	93	GLY	2.0
1	C	265	VAL	2.0
1	C	84	ALA	2.0

6.2 Non-standard residues in protein, DNA, RNA chains [i](#)

There are no non-standard protein/DNA/RNA residues in this entry.

6.3 Carbohydrates [i](#)

There are no monosaccharides in this entry.

6.4 Ligands [i](#)

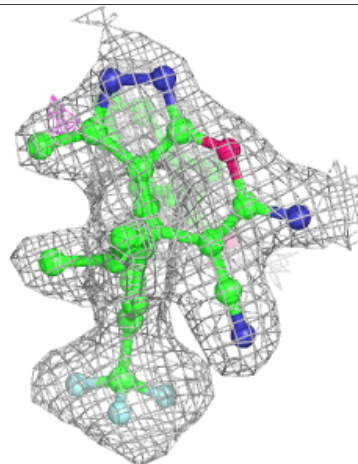
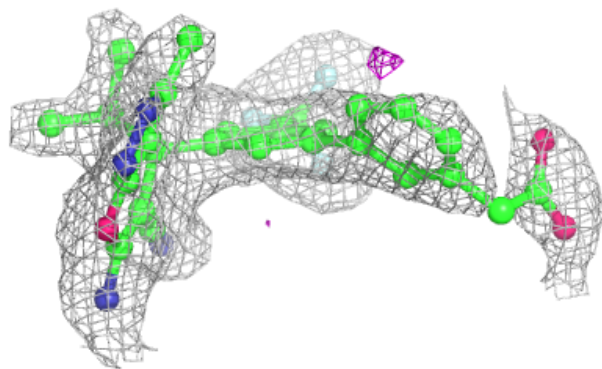
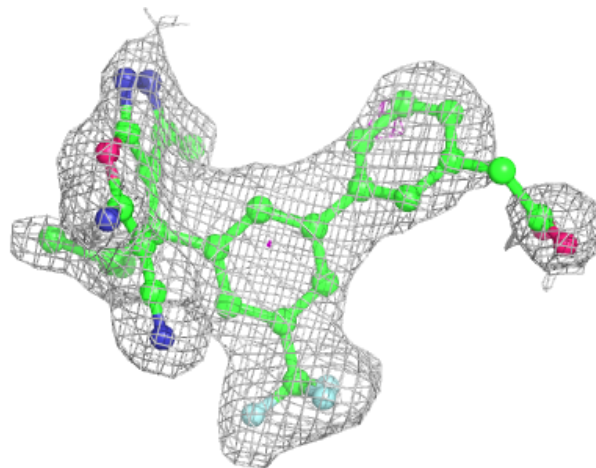
In the following table, the Atoms column lists the number of modelled atoms in the group and the number defined in the chemical component dictionary. The B-factors column lists the minimum, median, 95th percentile and maximum values of B factors of atoms in the group. The column labelled 'Q< 0.9' lists the number of atoms with occupancy less than 0.9.

Mol	Type	Chain	Res	Atoms	RSCC	RSR	B-factors(Å ²)	Q<0.9
3	G57	B	502	36/36	0.86	0.18	20,22,28,31	0
3	G57	C	502	36/36	0.86	0.21	19,23,30,33	0
3	G57	A	502	36/36	0.87	0.18	20,23,30,34	0
4	CL	A	503	1/1	0.87	0.13	29,29,29,29	0
2	PLG	A	501	20/20	0.89	0.17	19,21,22,23	0
2	PLG	C	501	20/20	0.92	0.20	18,21,22,22	0
4	CL	C	503	1/1	0.92	0.12	13,13,13,13	1
2	PLG	B	501	20/20	0.94	0.16	17,21,22,22	0

The following is a graphical depiction of the model fit to experimental electron density of all instances of the Ligand of Interest. In addition, ligands with molecular weight > 250 and outliers as shown on the geometry validation Tables will also be included. Each fit is shown from different orientation to approximate a three-dimensional view.

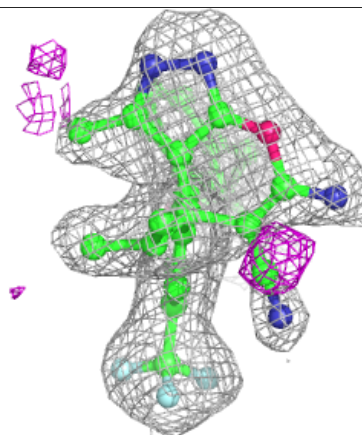
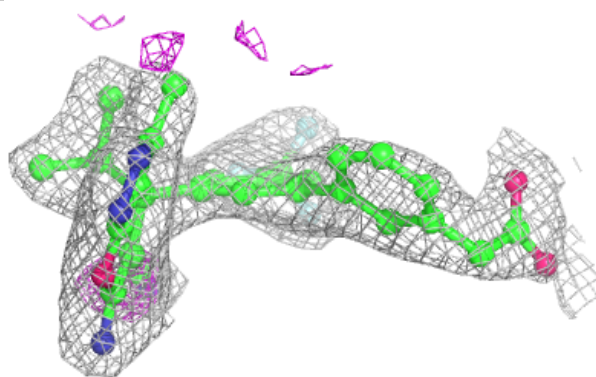
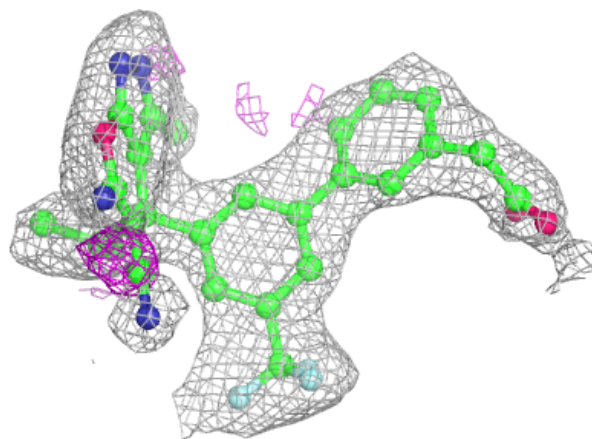
Electron density around G57 B 502:

$2mF_o-DF_c$ (at 0.7 rmsd) in gray
 mF_o-DF_c (at 3 rmsd) in purple (negative)
and green (positive)

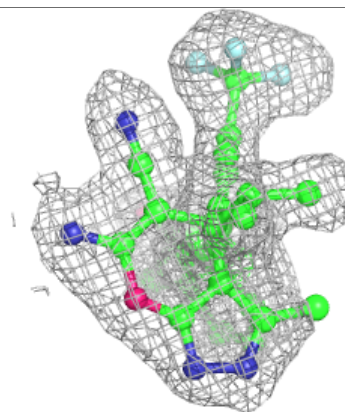
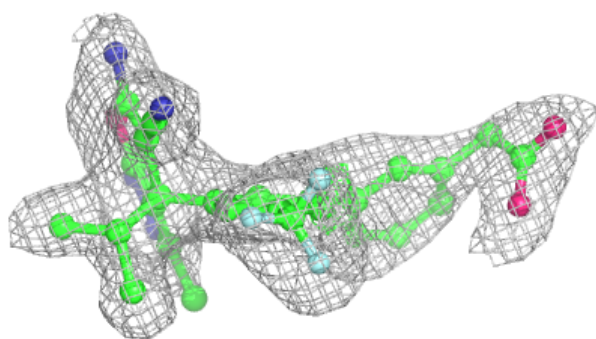
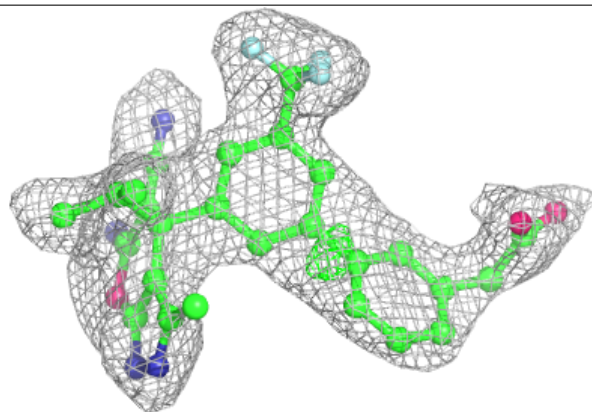


Electron density around G57 C 502:

$2mF_o-DF_c$ (at 0.7 rmsd) in gray
 mF_o-DF_c (at 3 rmsd) in purple (negative)
and green (positive)

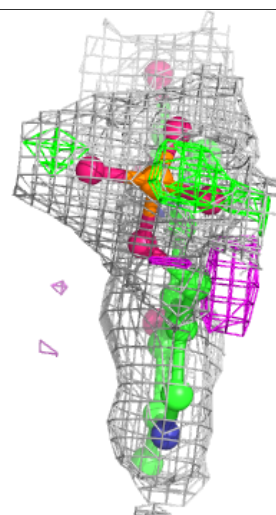
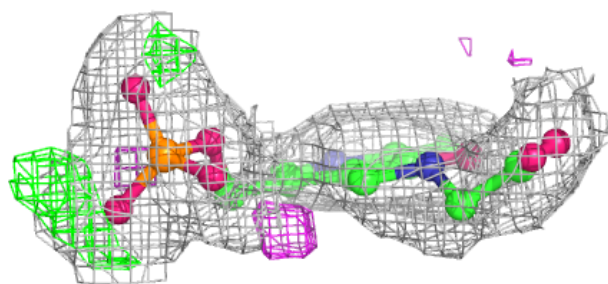
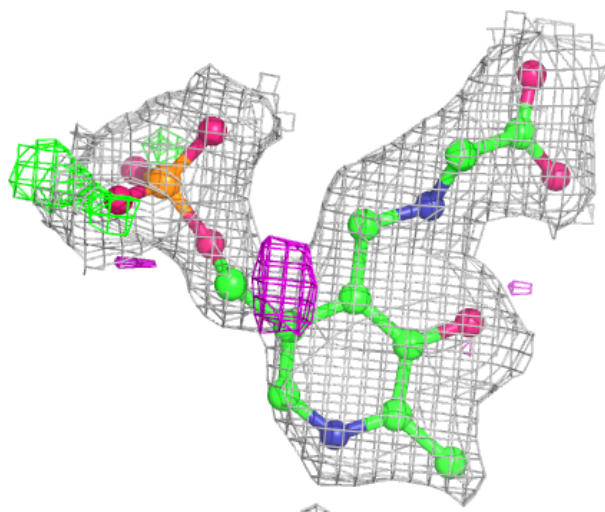
**Electron density around G57 A 502:**

$2mF_o-DF_c$ (at 0.7 rmsd) in gray
 mF_o-DF_c (at 3 rmsd) in purple (negative)
and green (positive)



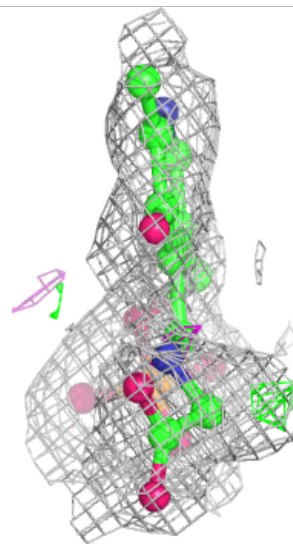
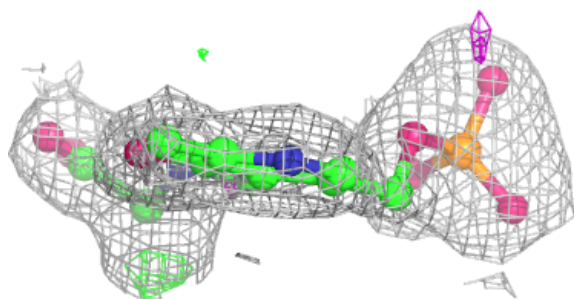
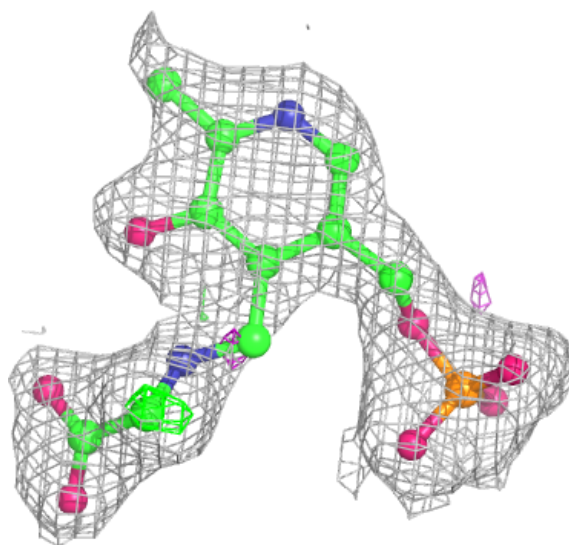
Electron density around PLG A 501:

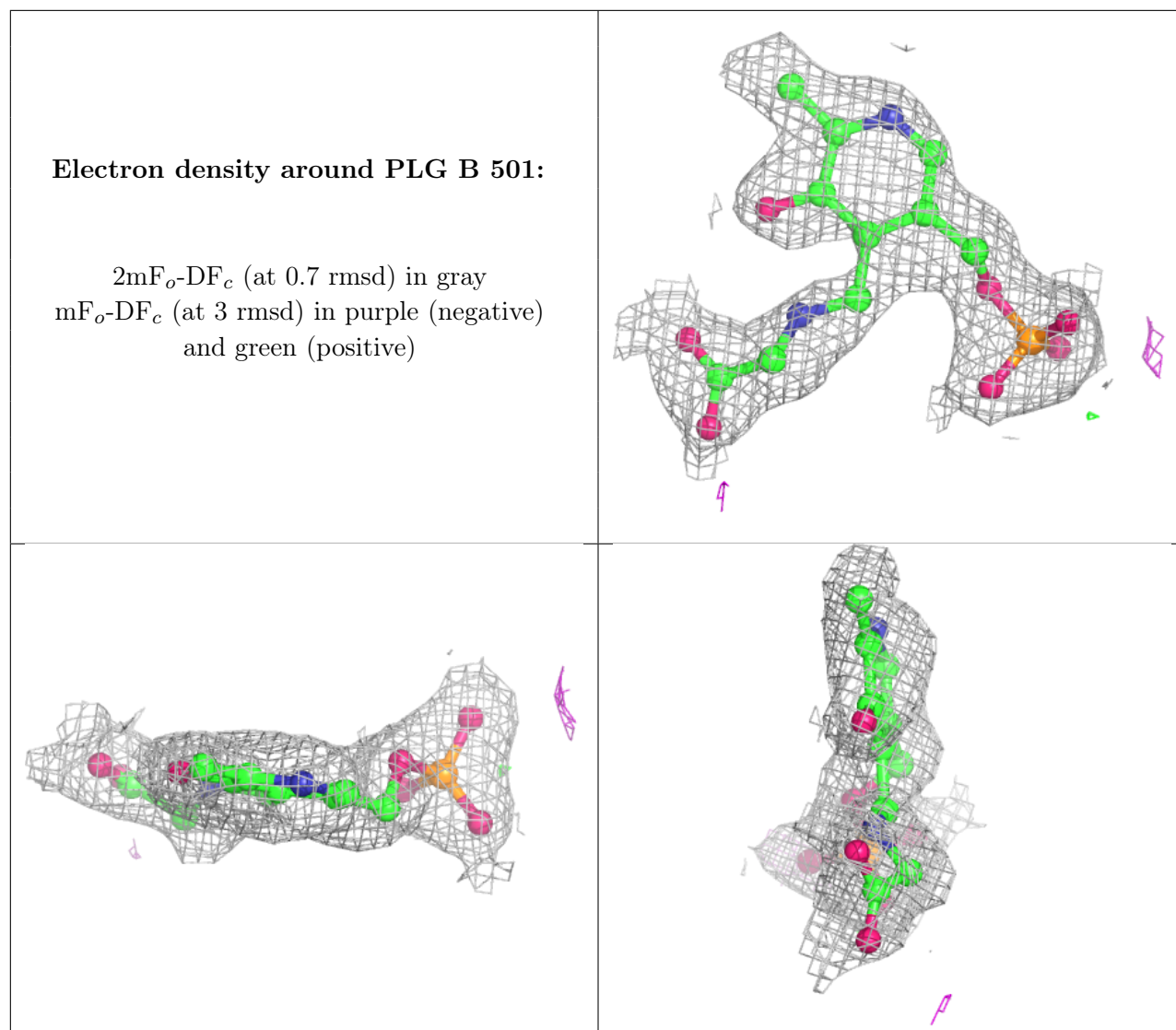
$2mF_o-DF_c$ (at 0.7 rmsd) in gray
 mF_o-DF_c (at 3 rmsd) in purple (negative)
and green (positive)



Electron density around PLG C 501:

$2mF_o-DF_c$ (at 0.7 rmsd) in gray
 mF_o-DF_c (at 3 rmsd) in purple (negative)
and green (positive)





6.5 Other polymers [\(i\)](#)

There are no such residues in this entry.