



Full wwPDB X-ray Structure Validation Report ⓘ

May 22, 2020 – 01:46 pm BST

PDB ID : 5FVU
Title : Structure of human nNOS R354A G357D mutant heme domain in complex with 4-methyl-6-(2-(5-(4-methylpiperazin-1-yl)pyridin-3-yl)ethyl) pyridin-2-amine
Authors : Li, H.; Poulos, T.L.
Deposited on : 2016-02-10
Resolution : 2.22 Å(reported)

This is a Full wwPDB X-ray Structure Validation Report for a publicly released PDB entry.

We welcome your comments at validation@mail.wwpdb.org

A user guide is available at

<https://www.wwpdb.org/validation/2017/XrayValidationReportHelp>

with specific help available everywhere you see the ⓘ symbol.

The following versions of software and data (see [references ⓘ](#)) were used in the production of this report:

MolProbity : 4.02b-467
Mogul : 1.8.5 (274361), CSD as541be (2020)
Xtriage (Phenix) : 1.13
EDS : 2.11
buster-report : 1.1.7 (2018)
Percentile statistics : 20191225.v01 (using entries in the PDB archive December 25th 2019)
Refmac : 5.8.0158
CCP4 : 7.0.044 (Gargrove)
Ideal geometry (proteins) : Engh & Huber (2001)
Ideal geometry (DNA, RNA) : Parkinson et al. (1996)
Validation Pipeline (wwPDB-VP) : 2.11

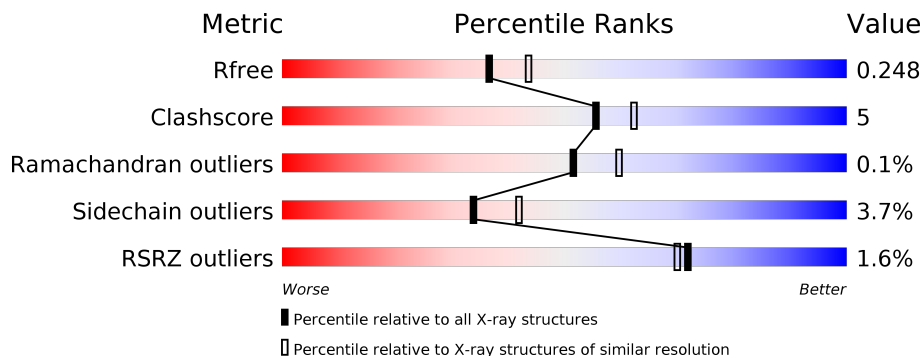
1 Overall quality at a glance

The following experimental techniques were used to determine the structure:

X-RAY DIFFRACTION

The reported resolution of this entry is 2.22 Å.

Percentile scores (ranging between 0-100) for global validation metrics of the entry are shown in the following graphic. The table shows the number of entries on which the scores are based.



Metric	Whole archive (#Entries)	Similar resolution (#Entries, resolution range(Å))
R_{free}	130704	5912 (2.24-2.20)
Clashscore	141614	6646 (2.24-2.20)
Ramachandran outliers	138981	6543 (2.24-2.20)
Sidechain outliers	138945	6544 (2.24-2.20)
RSRZ outliers	127900	5797 (2.24-2.20)

The table below summarises the geometric issues observed across the polymeric chains and their fit to the electron density. The red, orange, yellow and green segments on the lower bar indicate the fraction of residues that contain outliers for ≥ 3 , 2, 1 and 0 types of geometric quality criteria respectively. A grey segment represents the fraction of residues that are not modelled. The numeric value for each fraction is indicated below the corresponding segment, with a dot representing fractions $\leq 5\%$. The upper red bar (where present) indicates the fraction of residues that have poor fit to the electron density. The numeric value is given above the bar.

Mol	Chain	Length	Quality of chain
1	A	421	
1	B	421	

2 Entry composition [i](#)

There are 7 unique types of molecules in this entry. The entry contains 7102 atoms, of which 0 are hydrogens and 0 are deuteriums.

In the tables below, the ZeroOcc column contains the number of atoms modelled with zero occupancy, the AltConf column contains the number of residues with at least one atom in alternate conformation and the Trace column contains the number of residues modelled with at most 2 atoms.

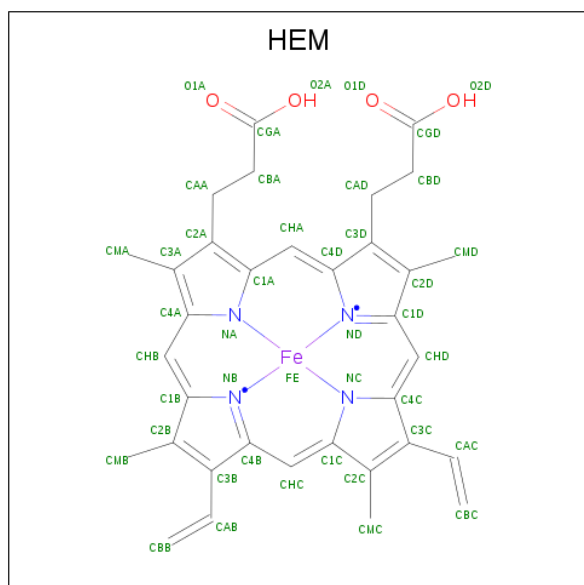
- Molecule 1 is a protein called NITRIC OXIDE SYNTHASE, BRAIN.

Mol	Chain	Residues	Atoms					ZeroOcc	AltConf	Trace
			Total	C	N	O	S			
1	A	413	Total 3371	C 2159	N 574	O 616	S 22	0	2	0
1	B	409	Total 3340	C 2140	N 569	O 610	S 21	0	3	1

There are 4 discrepancies between the modelled and reference sequences:

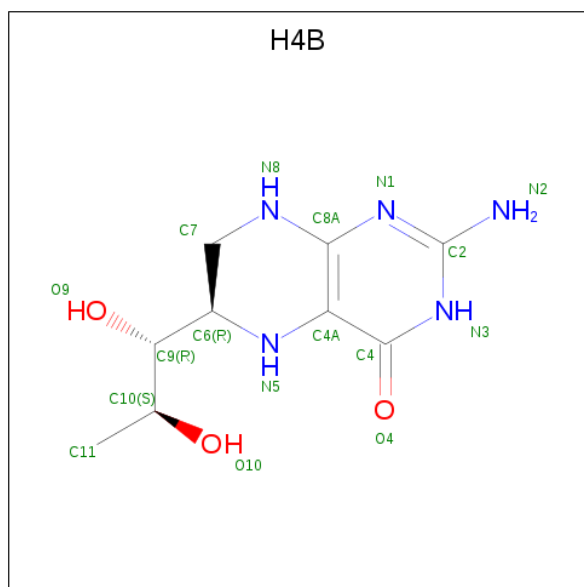
Chain	Residue	Modelled	Actual	Comment	Reference
A	354	ALA	ARG	engineered mutation	UNP P29475
A	357	ASP	GLY	engineered mutation	UNP P29475
B	354	ALA	ARG	engineered mutation	UNP P29475
B	357	ASP	GLY	engineered mutation	UNP P29475

- Molecule 2 is PROTOPORPHYRIN IX CONTAINING FE (three-letter code: HEM) (formula: $C_{34}H_{32}FeN_4O_4$).



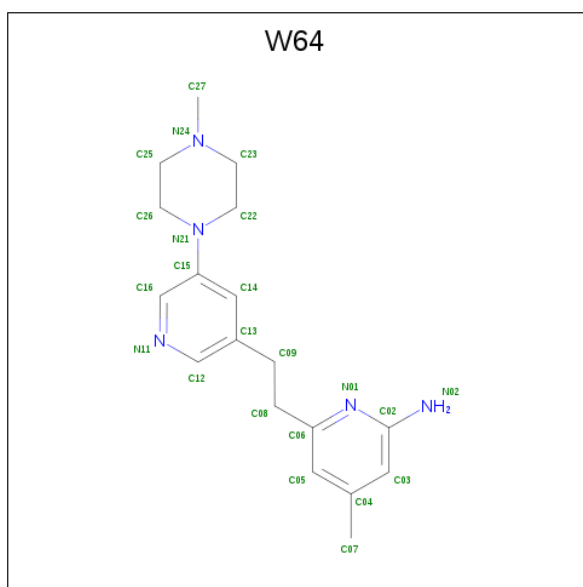
Mol	Chain	Residues	Atoms				ZeroOcc	AltConf	
2	A	1	Total	C	Fe	N	O	0	0
			43	34	1	4	4		
2	B	1	Total	C	Fe	N	O	0	0
			43	34	1	4	4		

- Molecule 3 is 5,6,7,8-TETRAHYDROBIOPTERIN (three-letter code: H4B) (formula: $C_9H_{15}N_5O_3$).



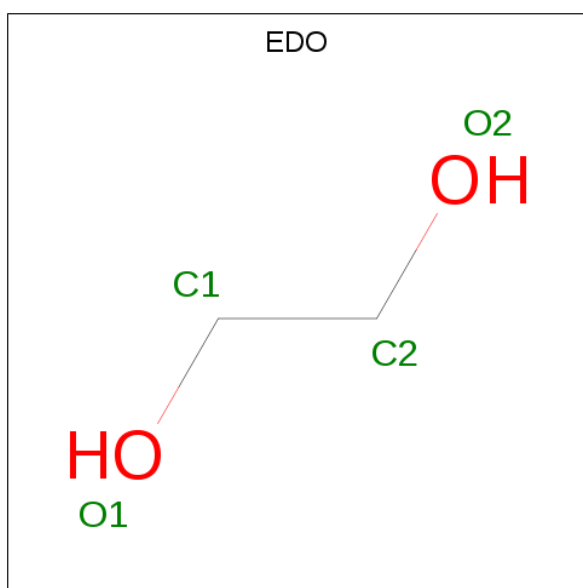
Mol	Chain	Residues	Atoms				ZeroOcc	AltConf
3	A	1	Total	C	N	O	0	0
			17	9	5	3		
3	B	1	Total	C	N	O	0	0
			17	9	5	3		

- Molecule 4 is 4-methyl-6-(2-(5-(4-methylpiperazin-1-yl)pyridin-3-yl)ethyl)pyridin-2-amine (three-letter code: W64) (formula: $C_{18}H_{25}N_5$).



Mol	Chain	Residues	Atoms			ZeroOcc	AltConf
4	A	1	Total	C	N	0	0
			23	18	5		
4	B	1	Total	C	N	0	0
			23	18	5		

- Molecule 5 is 1,2-ETHANEDIOL (three-letter code: EDO) (formula: $C_2H_6O_2$).



Mol	Chain	Residues	Atoms			ZeroOcc	AltConf
5	A	1	Total	C	O	0	0
			4	2	2		

- Molecule 6 is ZINC ION (three-letter code: ZN) (formula: Zn).

Mol	Chain	Residues	Atoms		ZeroOcc	AltConf
6	A	1	Total 1	Zn 1	0	0

- Molecule 7 is water.

Mol	Chain	Residues	Atoms		ZeroOcc	AltConf
7	A	129	Total 129	O 129	0	0
7	B	91	Total 91	O 91	0	0

4 Data and refinement statistics

Property	Value	Source
Space group	P 21 21 21	Depositor
Cell constants a, b, c, α , β , γ	52.33Å 121.67Å 163.40Å 90.00° 90.00° 90.00°	Depositor
Resolution (Å)	48.79 – 2.22 48.79 – 2.22	Depositor EDS
% Data completeness (in resolution range)	65.6 (48.79-2.22) 65.6 (48.79-2.22)	Depositor EDS
R_{merge}	0.21	Depositor
R_{sym}	(Not available)	Depositor
$\langle I/\sigma(I) \rangle$ ¹	1.68 (at 2.22Å)	Xtrriage
Refinement program	PHENIX (PHENIX.REFINE)	Depositor
R, R_{free}	0.177 , 0.248 0.177 , 0.248	Depositor DCC
R_{free} test set	1667 reflections (4.86%)	wwPDB-VP
Wilson B-factor (Å ²)	27.7	Xtrriage
Anisotropy	0.076	Xtrriage
Bulk solvent k_{sol} (e/Å ³), B_{sol} (Å ²)	0.33 , 44.1	EDS
L-test for twinning ²	$\langle L \rangle = 0.49$, $\langle L^2 \rangle = 0.32$	Xtrriage
Estimated twinning fraction	No twinning to report.	Xtrriage
F_o, F_c correlation	0.94	EDS
Total number of atoms	7102	wwPDB-VP
Average B, all atoms (Å ²)	50.0	wwPDB-VP

Xtrriage's analysis on translational NCS is as follows: *The largest off-origin peak in the Patterson function is 5.41% of the height of the origin peak. No significant pseudotranslation is detected.*

¹Intensities estimated from amplitudes.

²Theoretical values of $\langle |L| \rangle$, $\langle L^2 \rangle$ for acentric reflections are 0.5, 0.333 respectively for untwinned datasets, and 0.375, 0.2 for perfectly twinned datasets.

5 Model quality [i](#)

5.1 Standard geometry [i](#)

Bond lengths and bond angles in the following residue types are not validated in this section: HEM, ZN, H4B, W64, EDO

The Z score for a bond length (or angle) is the number of standard deviations the observed value is removed from the expected value. A bond length (or angle) with $|Z| > 5$ is considered an outlier worth inspection. RMSZ is the root-mean-square of all Z scores of the bond lengths (or angles).

Mol	Chain	Bond lengths		Bond angles	
		RMSZ	# Z >5	RMSZ	# Z >5
1	A	0.40	0/3473	0.55	0/4712
1	B	0.39	0/3444	0.56	0/4674
All	All	0.39	0/6917	0.55	0/9386

There are no bond length outliers.

There are no bond angle outliers.

There are no chirality outliers.

There are no planarity outliers.

5.2 Too-close contacts [i](#)

In the following table, the Non-H and H(model) columns list the number of non-hydrogen atoms and hydrogen atoms in the chain respectively. The H(added) column lists the number of hydrogen atoms added and optimized by MolProbity. The Clashes column lists the number of clashes within the asymmetric unit, whereas Symm-Clashes lists symmetry related clashes.

Mol	Chain	Non-H	H(model)	H(added)	Clashes	Symm-Clashes
1	A	3371	0	3282	35	0
1	B	3340	0	3250	34	0
2	A	43	0	30	0	0
2	B	43	0	30	2	0
3	A	17	0	15	0	0
3	B	17	0	15	0	0
4	A	23	0	0	0	0
4	B	23	0	0	1	0
5	A	4	0	6	2	0
6	A	1	0	0	0	0
7	A	129	0	0	2	0

Continued on next page...

Continued from previous page...

Mol	Chain	Non-H	H(model)	H(added)	Clashes	Symm-Clashes
7	B	91	0	0	4	0
All	All	7102	0	6628	69	0

The all-atom clashscore is defined as the number of clashes found per 1000 atoms (including hydrogen atoms). The all-atom clashscore for this structure is 5.

All (69) close contacts within the same asymmetric unit are listed below, sorted by their clash magnitude.

Atom-1	Atom-2	Interatomic distance (Å)	Clash overlap (Å)
1:A:574:ASN:HD21	5:A:870:EDO:H11	1.27	1.00
1:A:528:LEU:HD22	1:A:536:PRO:HB2	1.61	0.82
2:B:750:HEM:HBC2	2:B:750:HEM:HMC2	1.66	0.77
1:B:528:LEU:HD22	1:B:536:PRO:HB2	1.76	0.67
1:B:482:SER:HA	1:B:574:ASN:HB3	1.78	0.66
1:B:491:LYS:HG2	1:B:504:VAL:HG11	1.76	0.66
1:A:667:MET:HE1	1:A:698:GLN:HG2	1.77	0.65
1:A:380:LYS:NZ	1:A:384:GLU:OE2	2.29	0.64
1:B:481:ASN:HD21	1:B:527:LEU:HA	1.68	0.59
2:B:750:HEM:HHC	2:B:750:HEM:HBB2	1.86	0.56
1:A:480:TRP:HB2	1:A:528:LEU:HB3	1.88	0.55
1:A:494:ASP:OD1	1:A:496:SER:OG	2.13	0.54
1:A:478:ARG:HD3	1:A:585:SER:HB2	1.89	0.53
1:A:704:ARG:NH1	1:A:710:GLU:OE1	2.38	0.53
1:B:327:LEU:HD12	1:B:704:ARG:HG2	1.91	0.52
1:A:530:GLN:HG3	1:A:534:ASN:O	2.09	0.52
1:A:556:PHE:HB3	1:A:558:TRP:CE2	2.45	0.52
1:A:636:VAL:O	1:A:640:ILE:HG13	2.10	0.51
1:A:691:SER:HB3	1:B:687:PRO:HB2	1.92	0.51
1:B:679:ALA:HB3	1:B:700:MET:HB3	1.93	0.50
1:A:454:ALA:O	1:A:460:LEU:HA	2.12	0.50
1:A:540:GLN:HG3	7:A:2078:HOH:O	2.11	0.50
1:B:550:PRO:HG2	1:B:552:ARG:NH1	2.27	0.50
1:A:497:THR:HG21	1:A:501:PRO:HA	1.93	0.49
1:A:574:ASN:ND2	5:A:870:EDO:H11	2.11	0.49
1:B:480:TRP:HB2	1:B:528:LEU:HB3	1.95	0.49
1:A:485:ILE:O	1:A:486:ARG:HG2	2.14	0.48
1:B:501:PRO:O	1:B:504:VAL:HG23	2.14	0.48
1:A:667:MET:HE1	1:A:698:GLN:CG	2.43	0.48
1:B:490:TYR:HB2	1:B:498:LEU:HB3	1.95	0.48
1:A:415:ARG:CZ	1:A:674:ARG:HD2	2.46	0.46
1:B:515:TRP:CE2	1:B:526:PRO:HD3	2.51	0.45

Continued on next page...

Continued from previous page...

Atom-1	Atom-2	Interatomic distance (Å)	Clash overlap (Å)
1:A:478:ARG:HD2	1:A:478:ARG:HA	1.77	0.45
1:A:664:ILE:HG13	1:A:694:PRO:HB2	1.99	0.45
1:B:719:HIS:HD2	7:B:2040:HOH:O	2.00	0.45
1:A:337:MET:HB3	1:A:340:ILE:HG13	1.99	0.45
1:B:414:TRP:CE3	1:B:426:TRP:HA	2.52	0.45
1:B:475:HIS:HA	1:B:533:GLY:HA3	1.98	0.45
1:B:485:ILE:O	1:B:486:ARG:HG2	2.17	0.45
1:B:686:PRO:HG2	1:B:693:THR:HG21	1.99	0.44
1:B:428:LYS:O	7:B:2023:HOH:O	2.21	0.44
1:A:569:LEU:HA	1:A:570:PRO:HD3	1.88	0.44
1:A:615:VAL:HG21	1:A:638:ILE:HD11	1.99	0.44
1:B:530:GLN:HG3	1:B:534:ASN:O	2.18	0.44
1:A:576:LEU:HD11	1:A:583:GLU:HB3	2.00	0.43
1:B:542:PRO:HA	1:B:543:PRO:HD3	1.80	0.43
1:A:480:TRP:CE2	1:A:715:PRO:HB2	2.54	0.43
1:B:483:GLN:HG2	4:B:800:W64:C12	2.49	0.43
1:B:486:ARG:NH2	1:B:500:ASP:OD2	2.51	0.43
1:A:485:ILE:HD13	1:A:546:VAL:HG13	2.01	0.42
1:A:530:GLN:HE21	1:A:533:GLY:HA2	1.84	0.42
1:B:454:ALA:HB1	7:B:2034:HOH:O	2.19	0.42
1:A:482:SER:HA	1:A:574:ASN:HB3	2.00	0.42
1:B:359:LEU:HD21	1:B:398:THR:HA	2.00	0.42
1:B:515:TRP:O	1:B:517:PRO:HD3	2.19	0.42
1:B:517:PRO:HA	1:B:518:PRO:HD3	1.87	0.42
1:B:619:MET:HE2	1:B:621:LEU:HD11	2.02	0.42
1:B:385:ARG:O	1:B:389:VAL:HG23	2.19	0.42
1:A:647:GLN:HE22	1:B:627:SER:HB2	1.84	0.42
1:A:528:LEU:HA	1:A:528:LEU:HD23	1.90	0.41
1:A:369:GLN:NE2	7:A:2016:HOH:O	2.53	0.41
1:B:722:LYS:N	7:B:2053:HOH:O	2.53	0.41
1:A:441:HIS:CE1	1:A:539:PHE:HE2	2.39	0.41
1:A:353:VAL:HG11	1:A:471:THR:O	2.21	0.41
1:B:593:TYR:CD2	1:B:598:ILE:HD11	2.56	0.41
1:B:481:ASN:N	1:B:481:ASN:OD1	2.36	0.40
1:A:667:MET:HE1	1:A:698:GLN:CD	2.42	0.40
1:B:467:PHE:HB3	1:B:468:PRO:CD	2.52	0.40
1:B:689:SER:HB3	1:B:692:ILE:HG12	2.04	0.40

There are no symmetry-related clashes.

5.3 Torsion angles [i](#)

5.3.1 Protein backbone [i](#)

In the following table, the Percentiles column shows the percent Ramachandran outliers of the chain as a percentile score with respect to all X-ray entries followed by that with respect to entries of similar resolution.

The Analysed column shows the number of residues for which the backbone conformation was analysed, and the total number of residues.

Mol	Chain	Analysed	Favoured	Allowed	Outliers	Percentiles	
1	A	411/421 (98%)	399 (97%)	12 (3%)	0	100	100
1	B	408/421 (97%)	388 (95%)	19 (5%)	1 (0%)	47	54
All	All	819/842 (97%)	787 (96%)	31 (4%)	1 (0%)	51	60

All (1) Ramachandran outliers are listed below:

Mol	Chain	Res	Type
1	B	519	ARG

5.3.2 Protein sidechains [i](#)

In the following table, the Percentiles column shows the percent sidechain outliers of the chain as a percentile score with respect to all X-ray entries followed by that with respect to entries of similar resolution.

The Analysed column shows the number of residues for which the sidechain conformation was analysed, and the total number of residues.

Mol	Chain	Analysed	Rotameric	Outliers	Percentiles	
1	A	371/376 (99%)	360 (97%)	11 (3%)	41	51
1	B	367/376 (98%)	351 (96%)	16 (4%)	28	34
All	All	738/752 (98%)	711 (96%)	27 (4%)	34	42

All (27) residues with a non-rotameric sidechain are listed below:

Mol	Chain	Res	Type
1	A	302	CYS
1	A	327	LEU
1	A	386	LEU
1	A	394	ASP
1	A	491	LYS

Continued on next page...

Continued from previous page...

Mol	Chain	Res	Type
1	A	528	LEU
1	A	560	LYS
1	A	578	GLU
1	A	593	TYR
1	A	626	THR
1	A	691	SER
1	B	324	LYS
1	B	326	THR
1	B	365	GLU
1	B	394	ASP
1	B	395	THR
1	B	396	THR
1	B	460	LEU
1	B	481	ASN
1	B	494	ASP
1	B	512	GLN
1	B	552	ARG
1	B	555	LYS
1	B	593	TYR
1	B	624	ARG
1	B	706	THR
1	B	720	VAL

Some sidechains can be flipped to improve hydrogen bonding and reduce clashes. All (5) such sidechains are listed below:

Mol	Chain	Res	Type
1	A	369	GLN
1	A	503	ASN
1	A	647	GLN
1	B	512	GLN
1	B	513	GLN

5.3.3 RNA [i](#)

There are no RNA molecules in this entry.

5.4 Non-standard residues in protein, DNA, RNA chains [i](#)

There are no non-standard protein/DNA/RNA residues in this entry.

5.5 Carbohydrates i

There are no carbohydrates in this entry.

5.6 Ligand geometry i

Of 8 ligands modelled in this entry, 1 is monoatomic - leaving 7 for Mogul analysis.

In the following table, the Counts columns list the number of bonds (or angles) for which Mogul statistics could be retrieved, the number of bonds (or angles) that are observed in the model and the number of bonds (or angles) that are defined in the Chemical Component Dictionary. The Link column lists molecule types, if any, to which the group is linked. The Z score for a bond length (or angle) is the number of standard deviations the observed value is removed from the expected value. A bond length (or angle) with $|Z| > 2$ is considered an outlier worth inspection. RMSZ is the root-mean-square of all Z scores of the bond lengths (or angles).

Mol	Type	Chain	Res	Link	Bond lengths			Bond angles		
					Counts	RMSZ	# Z > 2	Counts	RMSZ	# Z > 2
3	H4B	B	760	-	16,18,18	0.94	0	11,26,26	2.67	5 (45%)
4	W64	B	800	-	25,25,25	0.43	0	33,34,34	1.91	12 (36%)
4	W64	A	800	-	25,25,25	0.39	0	33,34,34	1.92	12 (36%)
5	EDO	A	870	-	3,3,3	0.52	0	2,2,2	0.28	0
2	HEM	B	750	1	27,50,50	2.18	5 (18%)	17,82,82	2.19	3 (17%)
3	H4B	A	760	-	16,18,18	1.12	1 (6%)	11,26,26	2.62	5 (45%)
2	HEM	A	750	1	27,50,50	2.14	5 (18%)	17,82,82	1.91	3 (17%)

In the following table, the Chirals column lists the number of chiral outliers, the number of chiral centers analysed, the number of these observed in the model and the number defined in the Chemical Component Dictionary. Similar counts are reported in the Torsion and Rings columns. '-' means no outliers of that kind were identified.

Mol	Type	Chain	Res	Link	Chirals	Torsions	Rings
3	H4B	B	760	-	-	1/8/17/17	0/2/2/2
4	W64	B	800	-	-	4/9/19/19	0/3/3/3
4	W64	A	800	-	-	4/9/19/19	0/3/3/3
5	EDO	A	870	-	-	1/1/1/1	-
2	HEM	B	750	1	-	0/6/54/54	-
3	H4B	A	760	-	-	0/8/17/17	0/2/2/2
2	HEM	A	750	1	-	0/6/54/54	-

All (11) bond length outliers are listed below:

Mol	Chain	Res	Type	Atoms	Z	Observed(Å)	Ideal(Å)
2	B	750	HEM	C3B-C2B	-5.26	1.33	1.40
2	B	750	HEM	C3D-C2D	4.88	1.52	1.37
2	A	750	HEM	C3B-C2B	-4.88	1.33	1.40
2	A	750	HEM	C3D-C2D	4.86	1.52	1.37
2	B	750	HEM	C3C-C2C	-4.31	1.34	1.40
2	A	750	HEM	C3C-C2C	-4.13	1.34	1.40
2	A	750	HEM	C3C-CAC	3.83	1.55	1.47
2	B	750	HEM	C3B-CAB	3.63	1.55	1.47
2	A	750	HEM	C3B-CAB	3.55	1.55	1.47
2	B	750	HEM	C3C-CAC	3.51	1.55	1.47
3	A	760	H4B	C4-C4A	-2.54	1.38	1.41

All (40) bond angle outliers are listed below:

Mol	Chain	Res	Type	Atoms	Z	Observed(°)	Ideal(°)
3	B	760	H4B	C4-C4A-C8A	6.21	120.09	114.57
3	A	760	H4B	C4-C4A-C8A	5.82	119.74	114.57
2	B	750	HEM	CBA-CAA-C2A	-5.76	101.86	112.49
2	A	750	HEM	CBA-CAA-C2A	-4.83	103.59	112.49
2	B	750	HEM	CBD-CAD-C3D	-4.49	104.21	112.48
2	A	750	HEM	CBD-CAD-C3D	-4.05	105.02	112.48
4	A	800	W64	C02-N01-C06	3.75	120.94	118.10
4	B	800	W64	C25-C26-N21	-3.68	103.55	110.70
4	A	800	W64	C22-N21-C15	-3.45	108.78	118.09
4	B	800	W64	C08-C06-N01	3.42	121.04	115.95
4	A	800	W64	C09-C08-C06	-3.41	105.34	112.99
4	B	800	W64	C09-C08-C06	-3.22	105.78	112.99
4	B	800	W64	C05-C06-N01	-3.11	119.60	122.90
3	B	760	H4B	C4-C4A-N5	3.10	121.72	119.12
3	A	760	H4B	N3-C2-N1	-3.01	120.70	125.42
4	B	800	W64	C02-N01-C06	3.00	120.37	118.10
4	A	800	W64	C25-C26-N21	-2.94	104.99	110.70
2	A	750	HEM	C1D-C2D-C3D	-2.93	104.96	107.00
3	B	760	H4B	C4-N3-C2	2.85	120.46	115.93
4	B	800	W64	C23-C22-N21	-2.80	105.26	110.70
3	B	760	H4B	N3-C2-N1	-2.78	121.05	125.42
4	B	800	W64	C26-N21-C15	-2.75	110.67	118.09
3	A	760	H4B	C4-N3-C2	2.74	120.29	115.93
4	B	800	W64	C16-N11-C12	2.73	121.20	117.48
4	A	800	W64	C09-C13-C12	-2.71	117.47	121.83
3	A	760	H4B	C4-C4A-N5	2.67	121.36	119.12
4	B	800	W64	C14-C13-C12	2.67	119.29	116.71
3	B	760	H4B	C2-N1-C8A	2.63	120.43	114.54

Continued on next page...

Continued from previous page...

Mol	Chain	Res	Type	Atoms	Z	Observed(°)	Ideal(°)
2	B	750	HEM	C1D-C2D-C3D	-2.63	105.17	107.00
4	A	800	W64	C14-C13-C12	2.57	119.19	116.71
4	A	800	W64	C26-N21-C15	-2.54	111.23	118.09
4	A	800	W64	C23-C22-N21	-2.52	105.80	110.70
3	A	760	H4B	C2-N1-C8A	2.51	120.16	114.54
4	A	800	W64	C08-C06-N01	2.47	119.63	115.95
4	B	800	W64	N02-C02-N01	2.39	120.26	116.49
4	A	800	W64	C16-N11-C12	2.35	120.69	117.48
4	A	800	W64	C05-C06-N01	-2.29	120.47	122.90
4	B	800	W64	C15-C16-N11	-2.20	120.49	122.92
4	A	800	W64	N02-C02-N01	2.18	119.94	116.49
4	B	800	W64	C22-N21-C15	-2.14	112.32	118.09

There are no chirality outliers.

All (10) torsion outliers are listed below:

Mol	Chain	Res	Type	Atoms
4	A	800	W64	C16-C15-N21-C22
4	A	800	W64	C14-C15-N21-C22
4	B	800	W64	C14-C15-N21-C22
4	B	800	W64	C16-C15-N21-C22
5	A	870	EDO	O1-C1-C2-O2
3	B	760	H4B	O10-C10-C9-O9
4	B	800	W64	C08-C09-C13-C12
4	B	800	W64	C08-C09-C13-C14
4	A	800	W64	C08-C09-C13-C12
4	A	800	W64	C08-C09-C13-C14

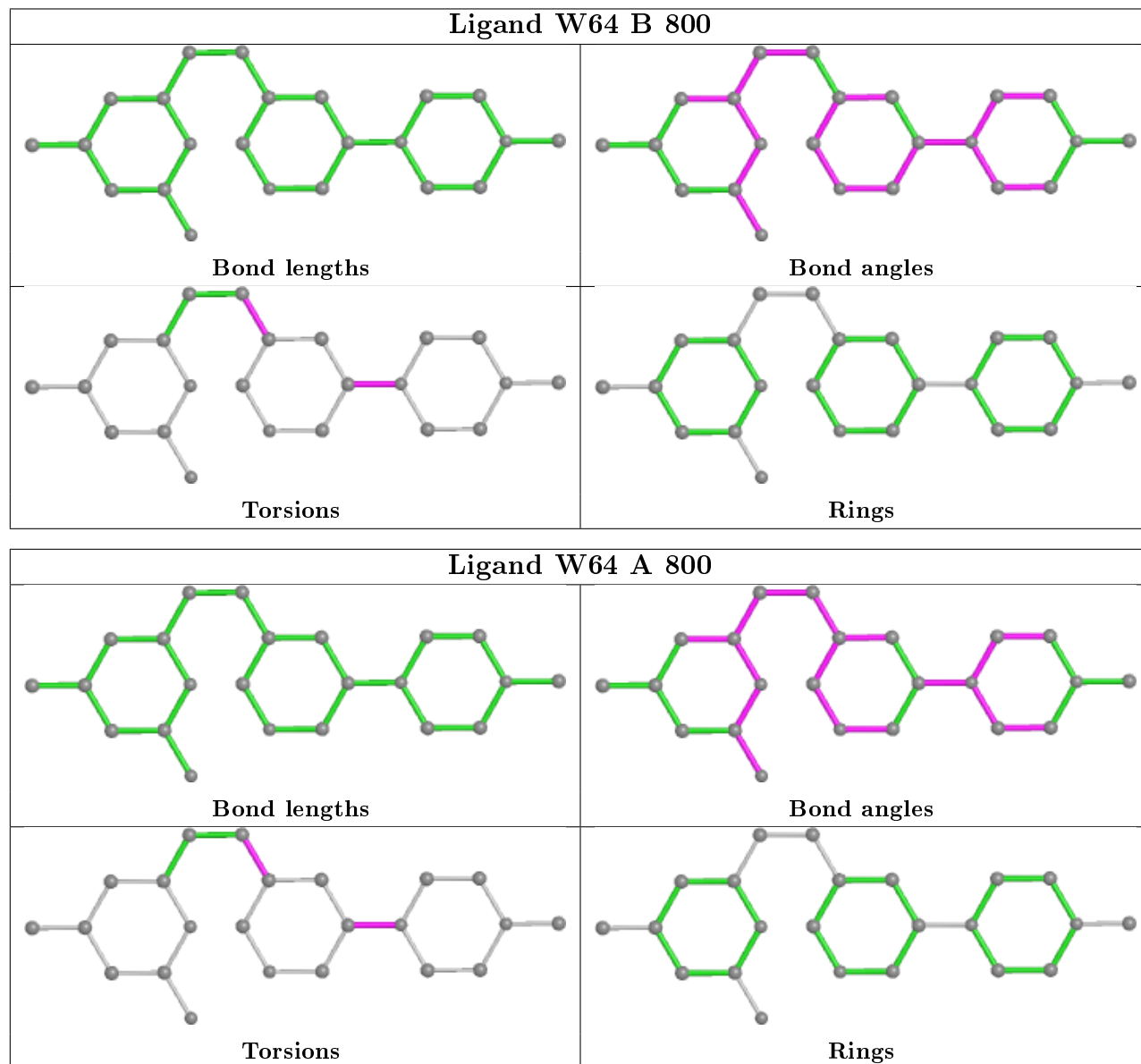
There are no ring outliers.

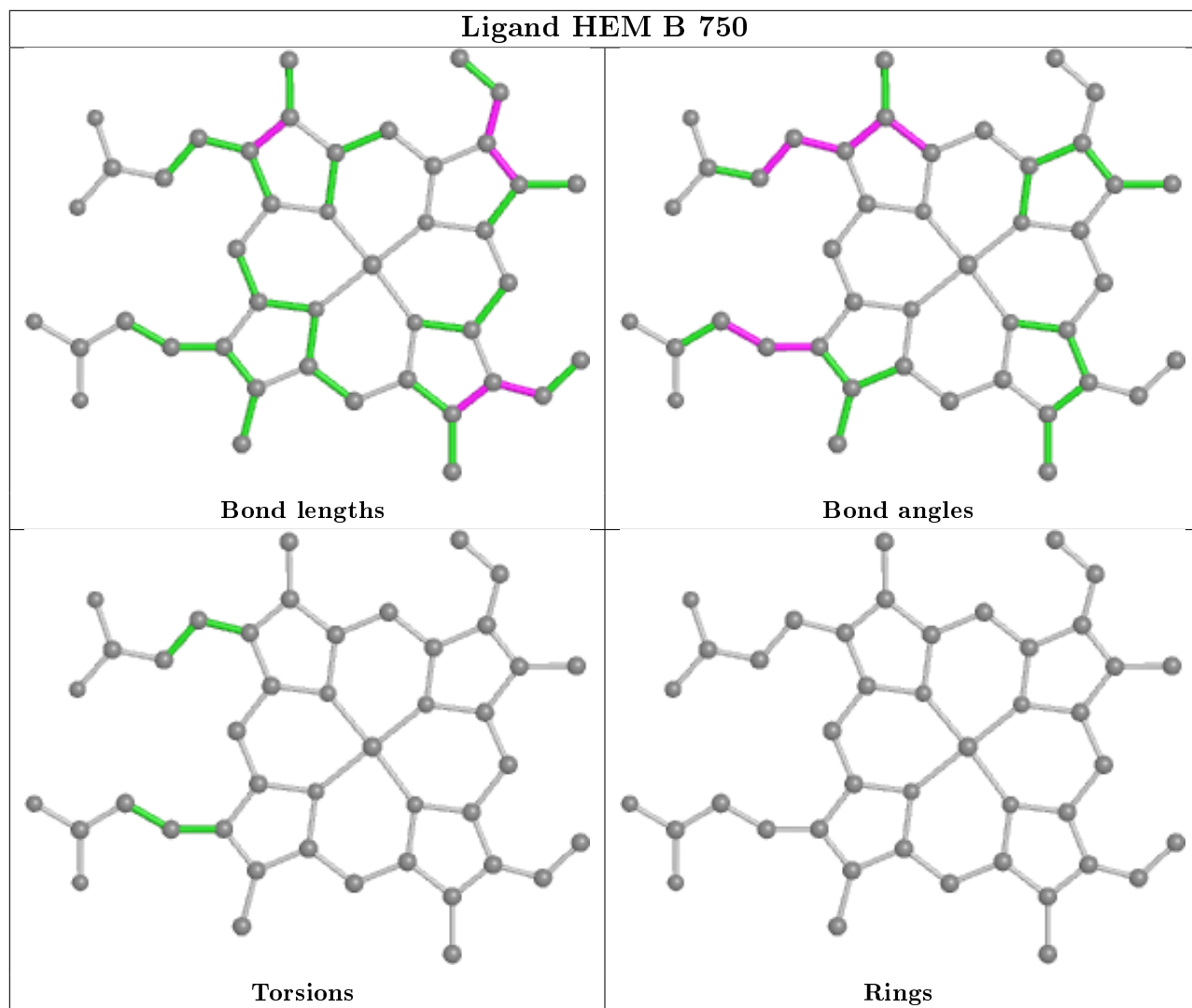
3 monomers are involved in 5 short contacts:

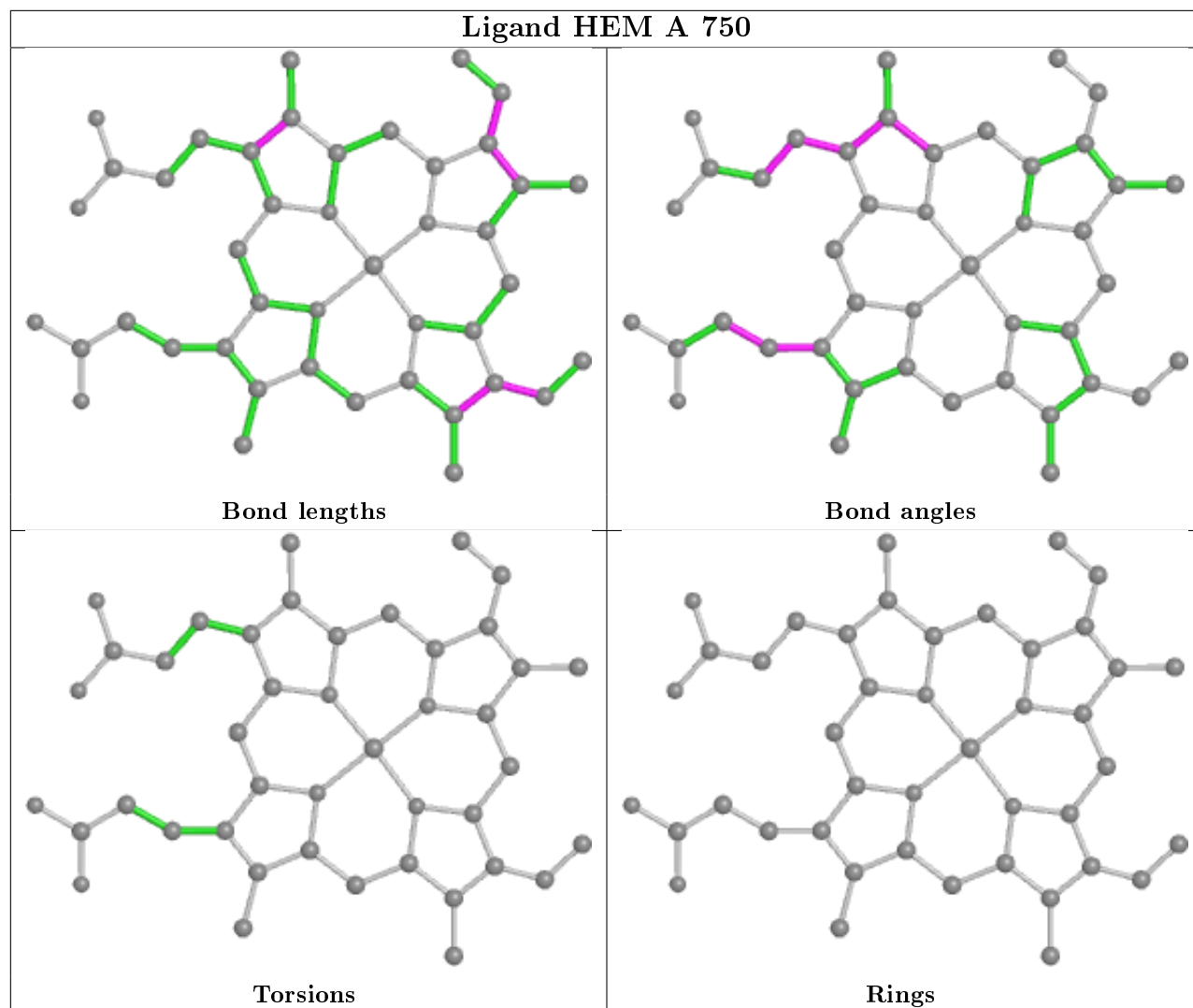
Mol	Chain	Res	Type	Clashes	Symm-Clashes
4	B	800	W64	1	0
5	A	870	EDO	2	0
2	B	750	HEM	2	0

The following is a two-dimensional graphical depiction of Mogul quality analysis of bond lengths, bond angles, torsion angles, and ring geometry for all instances of the Ligand of Interest. In addition, ligands with molecular weight > 250 and outliers as shown on the validation Tables will also be included. For torsion angles, if less than 5% of the Mogul distribution of torsion angles is within 10 degrees of the torsion angle in question, then that torsion angle is considered an outlier. Any bond that is central to one or more torsion angles identified as an outlier by Mogul will be

highlighted in the graph. For rings, the root-mean-square deviation (RMSD) between the ring in question and similar rings identified by Mogul is calculated over all ring torsion angles. If the average RMSD is greater than 60 degrees and the minimal RMSD between the ring in question and any Mogul-identified rings is also greater than 60 degrees, then that ring is considered an outlier. The outliers are highlighted in purple. The color gray indicates Mogul did not find sufficient equivalents in the CSD to analyse the geometry.







5.7 Other polymers [i](#)

There are no such residues in this entry.

5.8 Polymer linkage issues [i](#)

There are no chain breaks in this entry.

6 Fit of model and data [i](#)

6.1 Protein, DNA and RNA chains [i](#)

In the following table, the column labelled ‘#RSRZ> 2’ contains the number (and percentage) of RSRZ outliers, followed by percent RSRZ outliers for the chain as percentile scores relative to all X-ray entries and entries of similar resolution. The OWAB column contains the minimum, median, 95th percentile and maximum values of the occupancy-weighted average B-factor per residue. The column labelled ‘Q< 0.9’ lists the number of (and percentage) of residues with an average occupancy less than 0.9.

Mol	Chain	Analysed	<RSRZ>	#RSRZ>2	OWAB(Å ²)	Q<0.9
1	A	413/421 (98%)	-0.36	2 (0%) 91 90	22, 42, 78, 102	0
1	B	409/421 (97%)	-0.19	11 (2%) 54 52	23, 52, 97, 119	0
All	All	822/842 (97%)	-0.27	13 (1%) 72 70	22, 46, 91, 119	0

All (13) RSRZ outliers are listed below:

Mol	Chain	Res	Type	RSRZ
1	B	560	LYS	2.8
1	A	559	PHE	2.7
1	B	397	SER	2.5
1	B	557	GLU	2.5
1	B	386	LEU	2.4
1	B	356	LYS	2.4
1	B	559	PHE	2.4
1	A	624	ARG	2.3
1	B	304	ARG	2.3
1	B	326	THR	2.2
1	B	355	THR	2.2
1	B	371	TYR	2.1
1	B	720	VAL	2.1

6.2 Non-standard residues in protein, DNA, RNA chains [i](#)

There are no non-standard protein/DNA/RNA residues in this entry.

6.3 Carbohydrates [i](#)

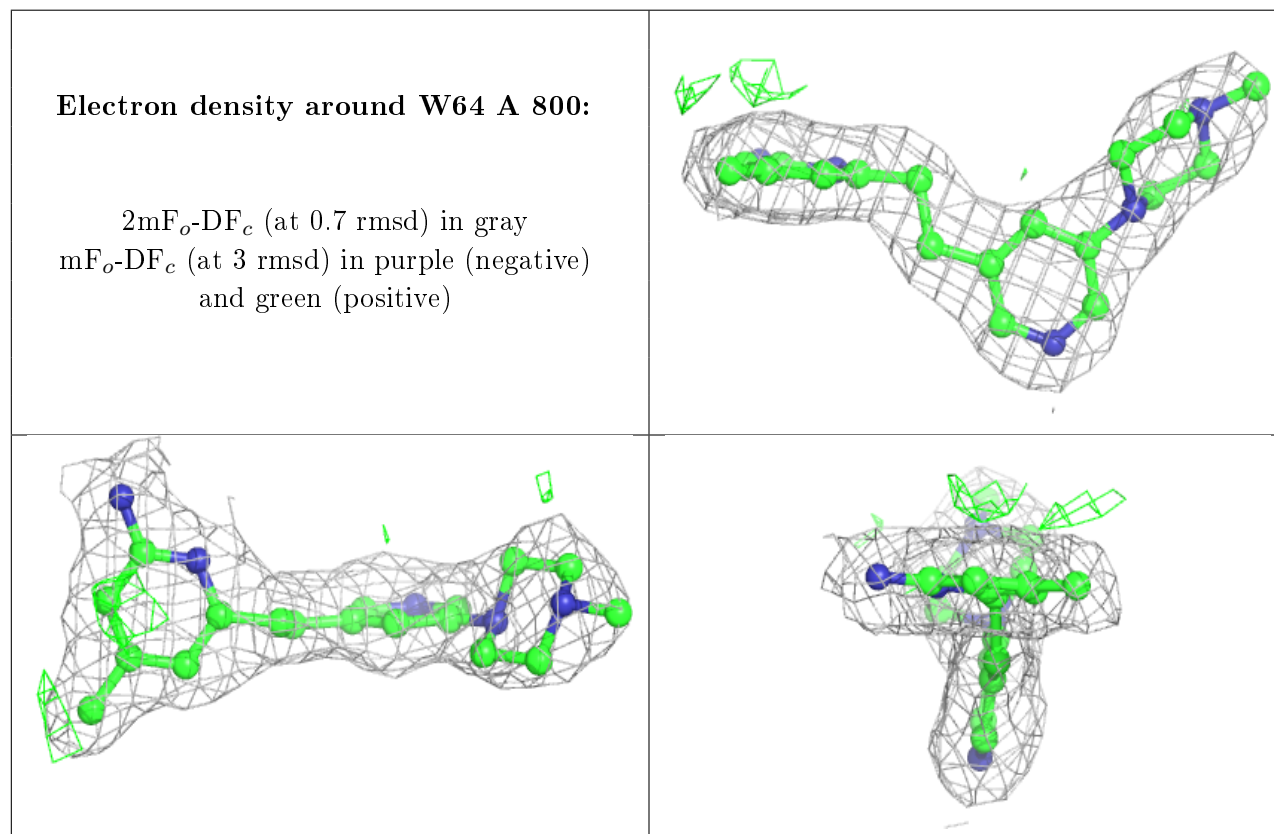
There are no carbohydrates in this entry.

6.4 Ligands [i](#)

In the following table, the Atoms column lists the number of modelled atoms in the group and the number defined in the chemical component dictionary. The B-factors column lists the minimum, median, 95th percentile and maximum values of B factors of atoms in the group. The column labelled 'Q<0.9' lists the number of atoms with occupancy less than 0.9.

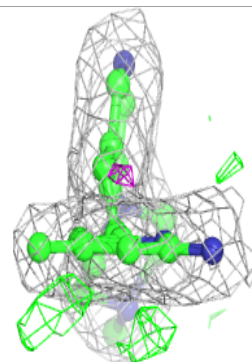
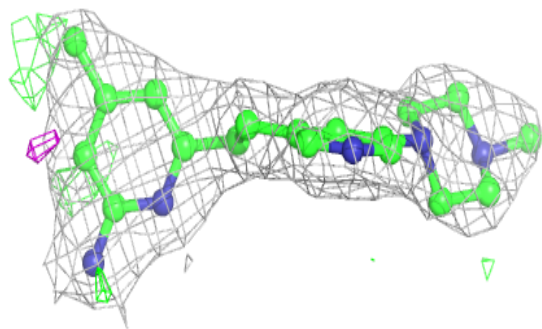
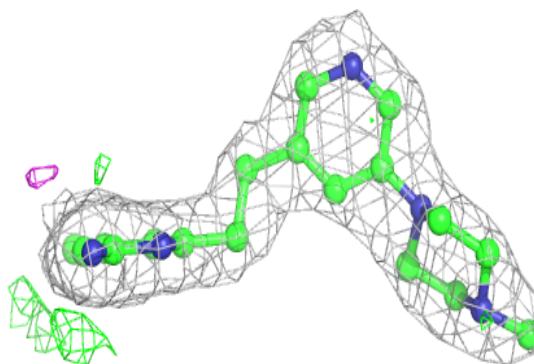
Mol	Type	Chain	Res	Atoms	RSCC	RSR	B-factors(Å ²)	Q<0.9
5	EDO	A	870	4/4	0.90	0.16	49,54,56,56	0
4	W64	A	800	23/23	0.97	0.11	24,47,56,60	0
4	W64	B	800	23/23	0.97	0.11	20,41,52,53	0
3	H4B	B	760	17/17	0.98	0.11	12,30,45,47	0
2	HEM	B	750	43/43	0.98	0.10	16,32,40,49	0
3	H4B	A	760	17/17	0.98	0.12	14,26,32,37	0
2	HEM	A	750	43/43	0.99	0.11	13,25,36,41	0
6	ZN	A	900	1/1	1.00	0.11	36,36,36,36	0

The following is a graphical depiction of the model fit to experimental electron density of all instances of the Ligand of Interest. In addition, ligands with molecular weight > 250 and outliers as shown on the geometry validation Tables will also be included. Each fit is shown from different orientation to approximate a three-dimensional view.



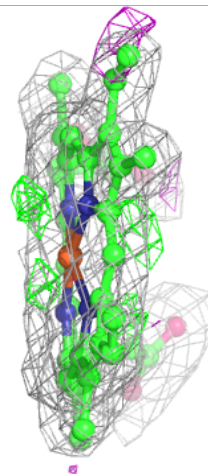
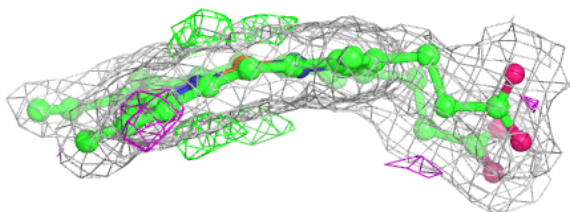
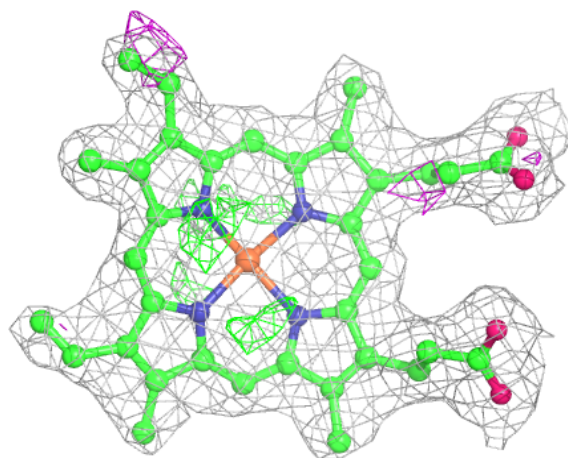
Electron density around W64 B 800:

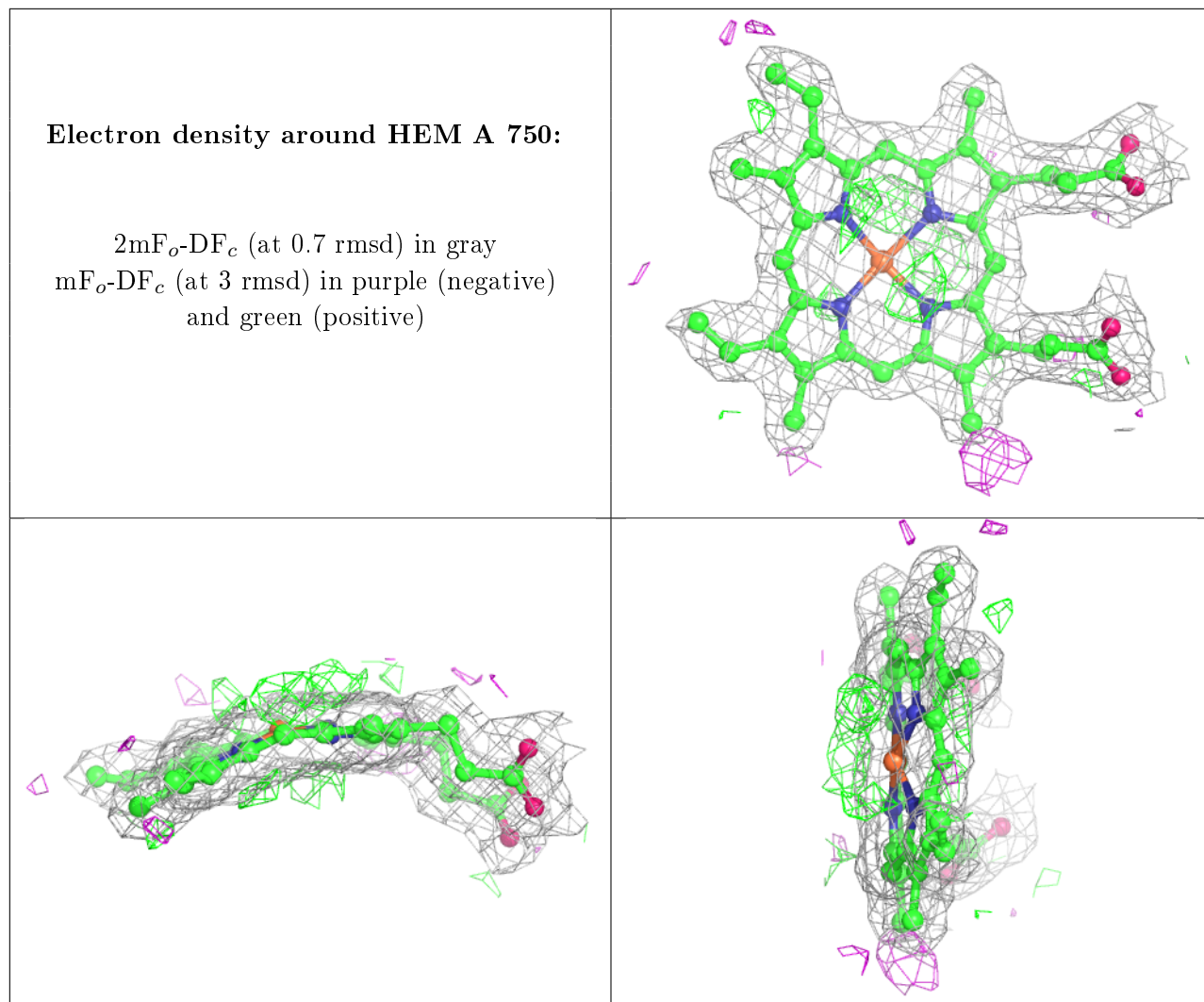
$2mF_o-DF_c$ (at 0.7 rmsd) in gray
 mF_o-DF_c (at 3 rmsd) in purple (negative)
and green (positive)



Electron density around HEM B 750:

$2mF_o-DF_c$ (at 0.7 rmsd) in gray
 mF_o-DF_c (at 3 rmsd) in purple (negative)
and green (positive)





6.5 Other polymers [\(i\)](#)

There are no such residues in this entry.