



wwPDB X-ray Structure Validation Summary Report ⓘ

Jan 4, 2024 – 03:58 am GMT

PDB ID : 5FNV
Title : a new complex structure of tubulin with an alpha-beta unsaturated lactone
Authors : Wang, Y.; Naismith, J.; Zhu, X.
Deposited on : 2015-11-16
Resolution : 2.61 Å(reported)

This is a wwPDB X-ray Structure Validation Summary Report for a publicly released PDB entry.

We welcome your comments at validation@mail.wwpdb.org

A user guide is available at

<https://www.wwpdb.org/validation/2017/XrayValidationReportHelp>

with specific help available everywhere you see the ⓘ symbol.

The types of validation reports are described at

<http://www.wwpdb.org/validation/2017/FAQs#types>.

The following versions of software and data (see [references ⓘ](#)) were used in the production of this report:

MolProbity : 4.02b-467
Mogul : 1.8.4, CSD as541be (2020)
Xtriage (Phenix) : 1.13
EDS : 2.36
buster-report : 1.1.7 (2018)
Percentile statistics : 20191225.v01 (using entries in the PDB archive December 25th 2019)
Refmac : 5.8.0158
CCP4 : 7.0.044 (Gargrove)
Ideal geometry (proteins) : Engh & Huber (2001)
Ideal geometry (DNA, RNA) : Parkinson et al. (1996)
Validation Pipeline (wwPDB-VP) : 2.36

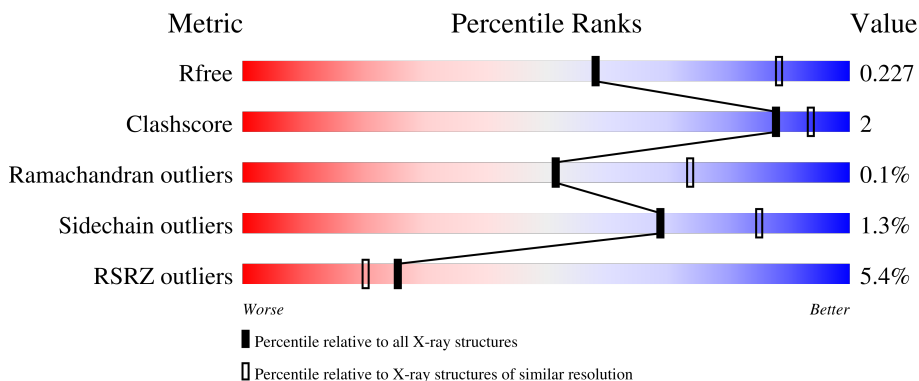
1 Overall quality at a glance

The following experimental techniques were used to determine the structure:

X-RAY DIFFRACTION

The reported resolution of this entry is 2.61 Å.

Percentile scores (ranging between 0-100) for global validation metrics of the entry are shown in the following graphic. The table shows the number of entries on which the scores are based.



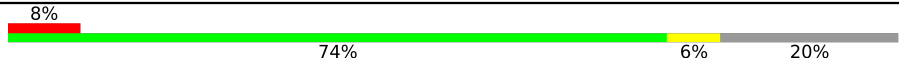
Metric	Whole archive (#Entries)	Similar resolution (#Entries, resolution range(Å))
R_{free}	130704	3797 (2.64-2.60)
Clashscore	141614	4168 (2.64-2.60)
Ramachandran outliers	138981	4093 (2.64-2.60)
Sidechain outliers	138945	4093 (2.64-2.60)
RSRZ outliers	127900	3731 (2.64-2.60)

The table below summarises the geometric issues observed across the polymeric chains and their fit to the electron density. The red, orange, yellow and green segments of the lower bar indicate the fraction of residues that contain outliers for ≥ 3 , 2, 1 and 0 types of geometric quality criteria respectively. A grey segment represents the fraction of residues that are not modelled. The numeric value for each fraction is indicated below the corresponding segment, with a dot representing fractions $\leq 5\%$. The upper red bar (where present) indicates the fraction of residues that have poor fit to the electron density. The numeric value is given above the bar.

Mol	Chain	Length	Quality of chain
1	A	451	 4% 88% 6% 5%
1	C	451	 2% 87% 10% .
2	B	445	 3% 88% 6% 6%
2	D	445	 8% 88% 6% 6%
3	E	143	 8% 78% . . 17%

Continued on next page...

Continued from previous page...

Mol	Chain	Length	Quality of chain
4	F	384	 <p>A horizontal bar chart representing the quality of chain. The bar is divided into four segments: a red segment on the left labeled '8%', a large green segment labeled '74%', a yellow segment labeled '6%', and a grey segment on the right labeled '20%'. The segments are stacked horizontally to represent the total quality distribution.</p>

2 Entry composition [i](#)

There are 12 unique types of molecules in this entry. The entry contains 17276 atoms, of which 0 are hydrogens and 0 are deuteriums.

In the tables below, the ZeroOcc column contains the number of atoms modelled with zero occupancy, the AltConf column contains the number of residues with at least one atom in alternate conformation and the Trace column contains the number of residues modelled with at most 2 atoms.

- Molecule 1 is a protein called TUBULIN ALPHA-1B CHAIN.

Mol	Chain	Residues	Atoms					ZeroOcc	AltConf	Trace
			Total	C	N	O	S			
1	A	429	Total	C	N	O	S	0	3	0
			3373	2133	577	640	23			
1	C	439	Total	C	N	O	S	0	5	0
			3454	2184	585	662	23			

- Molecule 2 is a protein called TUBULIN BETA CHAIN.

Mol	Chain	Residues	Atoms					ZeroOcc	AltConf	Trace
			Total	C	N	O	S			
2	B	419	Total	C	N	O	S	0	1	0
			3315	2086	567	637	25			
2	D	419	Total	C	N	O	S	0	1	0
			3288	2069	560	634	25			

- Molecule 3 is a protein called STATHMIN-4.

Mol	Chain	Residues	Atoms					ZeroOcc	AltConf	Trace
			Total	C	N	O	S			
3	E	119	Total	C	N	O	S	0	4	0
			1018	628	186	199	5			

There are 2 discrepancies between the modelled and reference sequences:

Chain	Residue	Modelled	Actual	Comment	Reference
E	3	MET	-	expression tag	UNP P63043
E	4	ALA	-	expression tag	UNP P63043

- Molecule 4 is a protein called TUBULIN TYROSINE LIGASE.

Mol	Chain	Residues	Atoms					ZeroOcc	AltConf	Trace
			Total	C	N	O	S			
4	F	308	Total	C	N	O	S	0	2	0
			2551	1644	442	451	14			

There are 6 discrepancies between the modelled and reference sequences:

Chain	Residue	Modelled	Actual	Comment	Reference
F	379	HIS	-	expression tag	UNP E1BQ43
F	380	HIS	-	expression tag	UNP E1BQ43
F	381	HIS	-	expression tag	UNP E1BQ43
F	382	HIS	-	expression tag	UNP E1BQ43
F	383	HIS	-	expression tag	UNP E1BQ43
F	384	HIS	-	expression tag	UNP E1BQ43

- Molecule 5 is GUANOSINE-5'-TRIPHOSPHATE (three-letter code: GTP) (formula: $C_{10}H_{16}N_5O_{14}P_3$).



Mol	Chain	Residues	Atoms					ZeroOcc	AltConf
			Total	C	N	O	P		
5	A	1	Total	C	N	O	P	0	0
			32	10	5	14	3		
5	C	1	Total	C	N	O	P	0	0
			32	10	5	14	3		
5	D	1	Total	C	N	O	P	0	0
			32	10	5	14	3		

- Molecule 6 is MAGNESIUM ION (three-letter code: MG) (formula: Mg).

Mol	Chain	Residues	Atoms		ZeroOcc	AltConf
			Total	Mg		
6	A	1	Total	Mg	0	0
			1	1		
6	B	1	Total	Mg	0	0
			1	1		
6	C	1	Total	Mg	0	0
			1	1		

Continued on next page...

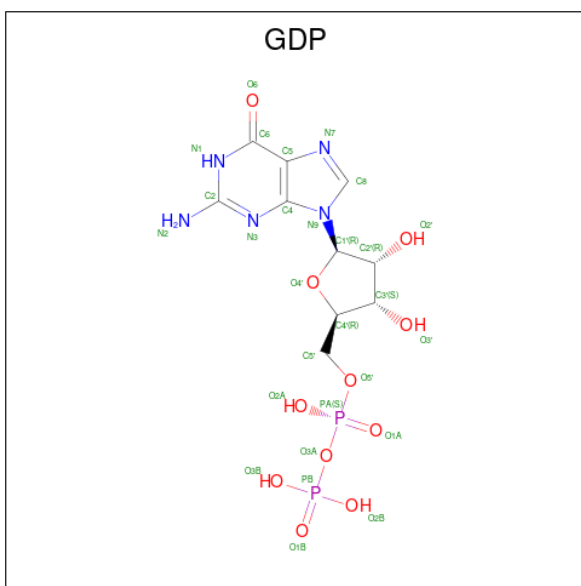
Continued from previous page...

Mol	Chain	Residues	Atoms		ZeroOcc	AltConf
6	D	1	Total	Mg	0	0
			1	1		

- Molecule 7 is CALCIUM ION (three-letter code: CA) (formula: Ca).

Mol	Chain	Residues	Atoms		ZeroOcc	AltConf
7	A	1	Total	Ca	0	0
			1	1		
7	B	1	Total	Ca	0	0
			1	1		
7	C	1	Total	Ca	0	0
			1	1		

- Molecule 8 is GUANOSINE-5'-DIPHOSPHATE (three-letter code: GDP) (formula: C₁₀H₁₅N₅O₁₁P₂).



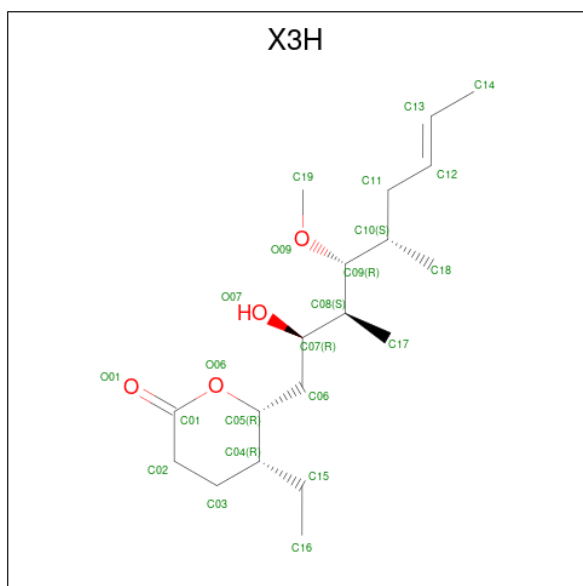
Mol	Chain	Residues	Atoms				ZeroOcc	AltConf	
8	B	1	Total	C	N	O	P	0	0
			28	10	5	11	2		

- Molecule 9 is 2-(N-MORPHOLINO)-ETHANESULFONIC ACID (three-letter code: MES) (formula: C₆H₁₃NO₄S).



Mol	Chain	Residues	Atoms					ZeroOcc	AltConf
			Total	C	N	O	S		
9	B	1	12	6	1	4	1	0	0
9	B	1	12	6	1	4	1	0	0

- Molecule 10 is PIRONETIN (three-letter code: X3H) (formula: $C_{19}H_{34}O_4$).



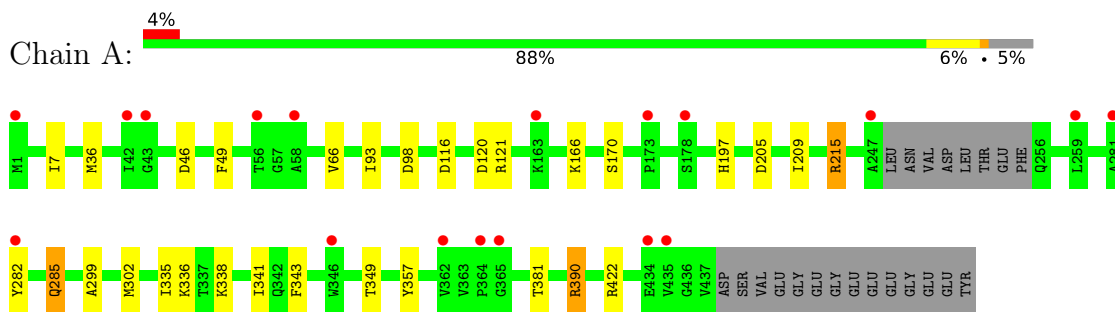
Mol	Chain	Residues	Atoms			ZeroOcc	AltConf
			Total	C	O		
10	C	1	23	19	4	0	0

- Molecule 11 is PHOSPHOMETHYLPHOSPHONIC ACID ADENYLATE ESTER (three-

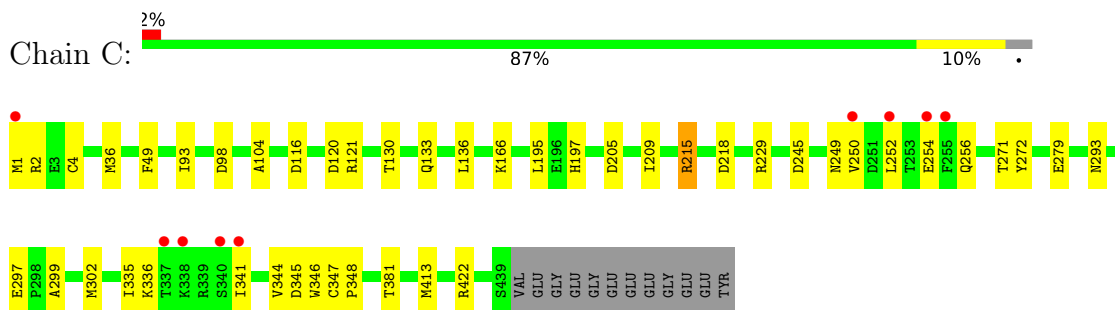
3 Residue-property plots [i](#)

These plots are drawn for all protein, RNA, DNA and oligosaccharide chains in the entry. The first graphic for a chain summarises the proportions of the various outlier classes displayed in the second graphic. The second graphic shows the sequence view annotated by issues in geometry and electron density. Residues are color-coded according to the number of geometric quality criteria for which they contain at least one outlier: green = 0, yellow = 1, orange = 2 and red = 3 or more. A red dot above a residue indicates a poor fit to the electron density ($RSRZ > 2$). Stretches of 2 or more consecutive residues without any outlier are shown as a green connector. Residues present in the sample, but not in the model, are shown in grey.

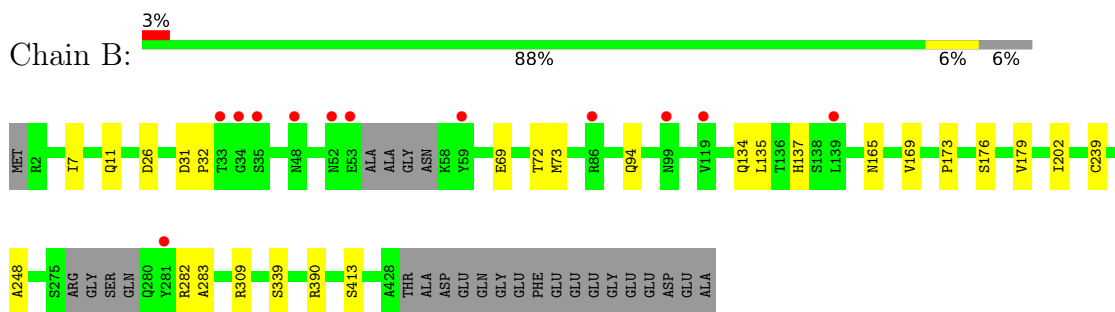
- Molecule 1: TUBULIN ALPHA-1B CHAIN



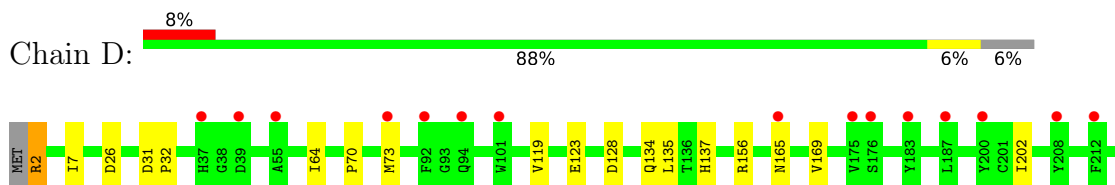
- Molecule 1: TUBULIN ALPHA-1B CHAIN



- Molecule 2: TUBULIN BETA CHAIN



- Molecule 2: TUBULIN BETA CHAIN



4 Data and refinement statistics

Property	Value	Source
Space group	P 21 21 21	Depositor
Cell constants a, b, c, α , β , γ	106.16Å 157.20Å 181.68Å 90.00° 90.00° 90.00°	Depositor
Resolution (Å)	118.88 – 2.61 45.49 – 2.61	Depositor EDS
% Data completeness (in resolution range)	94.6 (118.88-2.61) 94.7 (45.49-2.61)	Depositor EDS
R_{merge}	0.06	Depositor
R_{sym}	(Not available)	Depositor
$\langle I/\sigma(I) \rangle$ ¹	1.90 (at 2.61Å)	Xtrriage
Refinement program	REFMAC 5.8.0135	Depositor
R, R_{free}	0.186 , 0.226 0.193 , 0.227	Depositor DCC
R_{free} test set	4397 reflections (5.00%)	wwPDB-VP
Wilson B-factor (Å ²)	65.9	Xtrriage
Anisotropy	0.277	Xtrriage
Bulk solvent k_{sol} (e/Å ³), B_{sol} (Å ²)	0.32 , 47.6	EDS
L-test for twinning ²	$\langle L \rangle = 0.49$, $\langle L^2 \rangle = 0.32$	Xtrriage
Estimated twinning fraction	No twinning to report.	Xtrriage
F_o, F_c correlation	0.95	EDS
Total number of atoms	17276	wwPDB-VP
Average B, all atoms (Å ²)	80.0	wwPDB-VP

Xtrriage's analysis on translational NCS is as follows: *The largest off-origin peak in the Patterson function is 2.54% of the height of the origin peak. No significant pseudotranslation is detected.*

¹Intensities estimated from amplitudes.

²Theoretical values of $\langle |L| \rangle$, $\langle L^2 \rangle$ for acentric reflections are 0.5, 0.333 respectively for untwinned datasets, and 0.375, 0.2 for perfectly twinned datasets.

5 Model quality [i](#)

5.1 Standard geometry [i](#)

Bond lengths and bond angles in the following residue types are not validated in this section: MG, GTP, CA, X3H, MES, ACP, GDP

The Z score for a bond length (or angle) is the number of standard deviations the observed value is removed from the expected value. A bond length (or angle) with $|Z| > 5$ is considered an outlier worth inspection. RMSZ is the root-mean-square of all Z scores of the bond lengths (or angles).

Mol	Chain	Bond lengths		Bond angles	
		RMSZ	# $ Z > 5$	RMSZ	# $ Z > 5$
1	A	0.65	0/3452	0.84	7/4682 (0.1%)
1	C	0.72	0/3538	0.90	12/4803 (0.2%)
2	B	0.63	0/3388	0.79	1/4588 (0.0%)
2	D	0.59	0/3361	0.79	5/4555 (0.1%)
3	E	0.74	0/1030	0.82	0/1367
4	F	0.59	1/2614 (0.0%)	0.76	0/3531
All	All	0.65	1/17383 (0.0%)	0.82	25/23526 (0.1%)

All (1) bond length outliers are listed below:

Mol	Chain	Res	Type	Atoms	Z	Observed(Å)	Ideal(Å)
4	F	103	THR	C-O	6.44	1.35	1.23

The worst 5 of 25 bond angle outliers are listed below:

Mol	Chain	Res	Type	Atoms	Z	Observed($^{\circ}$)	Ideal($^{\circ}$)
1	C	229	ARG	NE-CZ-NH2	-8.75	115.92	120.30
1	C	245	ASP	CB-CG-OD2	-7.58	111.47	118.30
1	C	116	ASP	CB-CG-OD1	7.14	124.72	118.30
1	A	98	ASP	CB-CG-OD1	6.88	124.50	118.30
1	C	98	ASP	CB-CG-OD1	6.87	124.48	118.30

There are no chirality outliers.

There are no planarity outliers.

5.2 Too-close contacts [i](#)

In the following table, the Non-H and H(model) columns list the number of non-hydrogen atoms and hydrogen atoms in the chain respectively. The H(added) column lists the number of hydrogen

atoms added and optimized by MolProbity. The Clashes column lists the number of clashes within the asymmetric unit, whereas Symm-Clashes lists symmetry-related clashes.

Mol	Chain	Non-H	H(model)	H(added)	Clashes	Symm-Clashes
1	A	3373	0	3288	12	0
1	C	3454	0	3357	23	0
2	B	3315	0	3196	13	0
2	D	3288	0	3169	14	0
3	E	1018	0	1031	4	0
4	F	2551	0	2524	9	0
5	A	32	0	12	0	0
5	C	32	0	12	0	0
5	D	32	0	12	0	0
6	A	1	0	0	0	0
6	B	1	0	0	0	0
6	C	1	0	0	0	0
6	D	1	0	0	0	0
7	A	1	0	0	0	0
7	B	1	0	0	0	0
7	C	1	0	0	0	0
8	B	28	0	12	0	0
9	B	24	0	26	0	0
10	C	23	0	0	0	0
11	F	31	0	14	0	0
12	A	16	0	0	0	0
12	B	16	0	0	0	0
12	C	31	0	0	0	0
12	D	3	0	0	0	0
12	F	2	0	0	0	0
All	All	17276	0	16653	69	0

The all-atom clashscore is defined as the number of clashes found per 1000 atoms (including hydrogen atoms). The all-atom clashscore for this structure is 2.

The worst 5 of 69 close contacts within the same asymmetric unit are listed below, sorted by their clash magnitude.

Atom-1	Atom-2	Interatomic distance (Å)	Clash overlap (Å)
2:D:64:ILE:HD12	2:D:119:VAL:HG12	1.63	0.80
2:B:309:ARG:NH1	2:B:339:SER:O	2.24	0.70
1:C:4[A]:CYS:SG	1:C:136:LEU:HG	2.38	0.64
2:B:69:GLU:OE2	1:C:250:VAL:N	2.37	0.57
2:D:64:ILE:HD11	2:D:123:GLU:HG3	1.86	0.57

There are no symmetry-related clashes.

5.3 Torsion angles [i](#)

5.3.1 Protein backbone [i](#)

In the following table, the Percentiles column shows the percent Ramachandran outliers of the chain as a percentile score with respect to all X-ray entries followed by that with respect to entries of similar resolution.

The Analysed column shows the number of residues for which the backbone conformation was analysed, and the total number of residues.

Mol	Chain	Analysed	Favoured	Allowed	Outliers	Percentiles	
1	A	428/451 (95%)	416 (97%)	11 (3%)	1 (0%)	47	69
1	C	441/451 (98%)	425 (96%)	15 (3%)	1 (0%)	47	69
2	B	414/445 (93%)	403 (97%)	11 (3%)	0	100	100
2	D	415/445 (93%)	403 (97%)	12 (3%)	0	100	100
3	E	119/143 (83%)	117 (98%)	2 (2%)	0	100	100
4	F	298/384 (78%)	280 (94%)	18 (6%)	0	100	100
All	All	2115/2319 (91%)	2044 (97%)	69 (3%)	2 (0%)	51	74

All (2) Ramachandran outliers are listed below:

Mol	Chain	Res	Type
1	A	338	LYS
1	C	254	GLU

5.3.2 Protein sidechains [i](#)

In the following table, the Percentiles column shows the percent sidechain outliers of the chain as a percentile score with respect to all X-ray entries followed by that with respect to entries of similar resolution.

The Analysed column shows the number of residues for which the sidechain conformation was analysed, and the total number of residues.

Mol	Chain	Analysed	Rotameric	Outliers	Percentiles	
1	A	363/379 (96%)	358 (99%)	5 (1%)	67	84
1	C	374/379 (99%)	370 (99%)	4 (1%)	73	88
2	B	364/381 (96%)	360 (99%)	4 (1%)	73	88

Continued on next page...

Continued from previous page...

Mol	Chain	Analysed	Rotameric	Outliers	Percentiles	
2	D	360/381 (94%)	356 (99%)	4 (1%)	73	88
3	E	111/127 (87%)	110 (99%)	1 (1%)	78	90
4	F	281/342 (82%)	275 (98%)	6 (2%)	53	76
All	All	1853/1989 (93%)	1829 (99%)	24 (1%)	69	85

5 of 24 residues with a non-rotameric sidechain are listed below:

Mol	Chain	Res	Type
2	D	137	HIS
3	E	51	GLN
2	D	413	SER
4	F	12	SER
2	B	137	HIS

Sometimes sidechains can be flipped to improve hydrogen bonding and reduce clashes. 5 of 6 such sidechains are listed below:

Mol	Chain	Res	Type
2	D	195	ASN
3	E	51	GLN
4	F	252	ASN
2	D	94	GLN
2	B	165	ASN

5.3.3 RNA [i](#)

There are no RNA molecules in this entry.

5.4 Non-standard residues in protein, DNA, RNA chains [i](#)

There are no non-standard protein/DNA/RNA residues in this entry.

5.5 Carbohydrates [i](#)

There are no monosaccharides in this entry.

5.6 Ligand geometry [i](#)

Of 15 ligands modelled in this entry, 7 are monoatomic - leaving 8 for Mogul analysis.

In the following table, the Counts columns list the number of bonds (or angles) for which Mogul statistics could be retrieved, the number of bonds (or angles) that are observed in the model and the number of bonds (or angles) that are defined in the Chemical Component Dictionary. The Link column lists molecule types, if any, to which the group is linked. The Z score for a bond length (or angle) is the number of standard deviations the observed value is removed from the expected value. A bond length (or angle) with $|Z| > 2$ is considered an outlier worth inspection. RMSZ is the root-mean-square of all Z scores of the bond lengths (or angles).

Mol	Type	Chain	Res	Link	Bond lengths			Bond angles		
					Counts	RMSZ	# Z > 2	Counts	RMSZ	# Z > 2
9	MES	B	1433	-	12,12,12	2.31	1 (8%)	14,16,16	1.30	2 (14%)
10	X3H	C	1443	1	23,23,23	1.44	2 (8%)	26,30,30	2.08	6 (23%)
9	MES	B	1432	-	12,12,12	2.29	1 (8%)	14,16,16	1.49	2 (14%)
8	GDP	B	1429	6	24,30,30	1.10	3 (12%)	30,47,47	1.08	3 (10%)
5	GTP	C	1440	6	26,34,34	0.97	1 (3%)	32,54,54	1.09	4 (12%)
11	ACP	F	1385	-	27,33,33	1.77	8 (29%)	32,52,52	1.32	5 (15%)
5	GTP	A	1438	6	26,34,34	0.89	1 (3%)	32,54,54	1.07	2 (6%)
5	GTP	D	1431	6	26,34,34	1.05	2 (7%)	32,54,54	1.25	4 (12%)

In the following table, the Chirals column lists the number of chiral outliers, the number of chiral centers analysed, the number of these observed in the model and the number defined in the Chemical Component Dictionary. Similar counts are reported in the Torsion and Rings columns. '2' means no outliers of that kind were identified.

Mol	Type	Chain	Res	Link	Chirals	Torsions	Rings
9	MES	B	1433	-	-	2/6/14/14	0/1/1/1
10	X3H	C	1443	1	-	0/24/37/37	0/1/1/1
9	MES	B	1432	-	-	0/6/14/14	0/1/1/1
8	GDP	B	1429	6	-	3/12/32/32	0/3/3/3
5	GTP	C	1440	6	-	6/18/38/38	0/3/3/3
11	ACP	F	1385	-	-	3/15/38/38	0/3/3/3
5	GTP	A	1438	6	-	4/18/38/38	0/3/3/3
5	GTP	D	1431	6	-	7/18/38/38	0/3/3/3

The worst 5 of 19 bond length outliers are listed below:

Mol	Chain	Res	Type	Atoms	Z	Observed(Å)	Ideal(Å)
9	B	1433	MES	C8-S	-7.74	1.66	1.77

Continued on next page...

Continued from previous page...

Mol	Chain	Res	Type	Atoms	Z	Observed(Å)	Ideal(Å)
9	B	1432	MES	C8-S	-7.59	1.66	1.77
11	F	1385	ACP	PG-O1G	5.59	1.61	1.50
10	C	1443	X3H	O06-C01	5.02	1.42	1.34
10	C	1443	X3H	O06-C05	-3.64	1.41	1.46

The worst 5 of 28 bond angle outliers are listed below:

Mol	Chain	Res	Type	Atoms	Z	Observed(°)	Ideal(°)
10	C	1443	X3H	C03-C02-C01	-5.60	104.45	116.20
10	C	1443	X3H	O06-C01-C02	4.10	127.55	118.87
10	C	1443	X3H	C02-C03-C04	4.10	120.23	111.51
10	C	1443	X3H	C03-C04-C05	-4.01	102.19	109.30
11	F	1385	ACP	N3-C2-N1	-3.39	123.37	128.68

There are no chirality outliers.

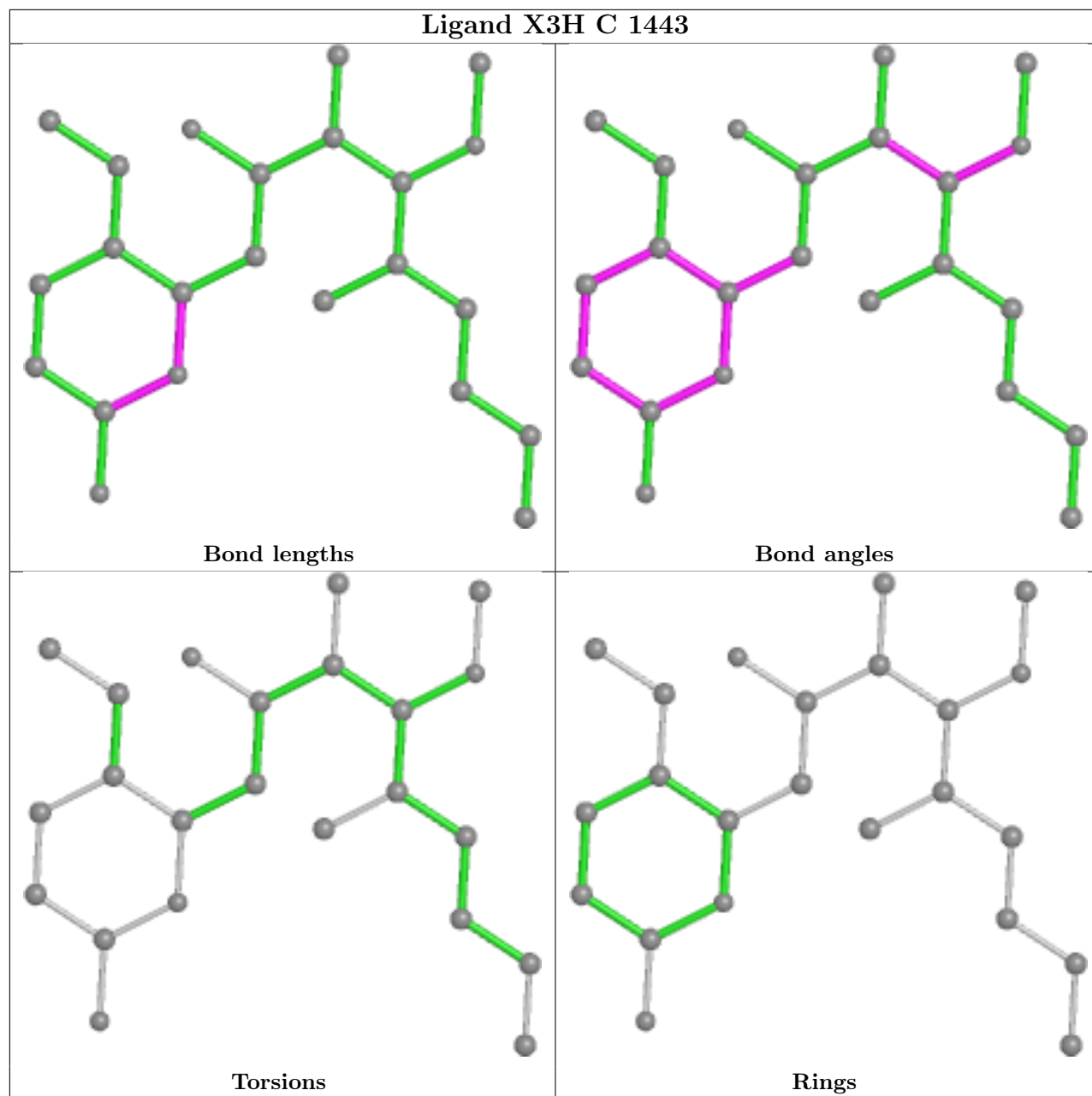
5 of 25 torsion outliers are listed below:

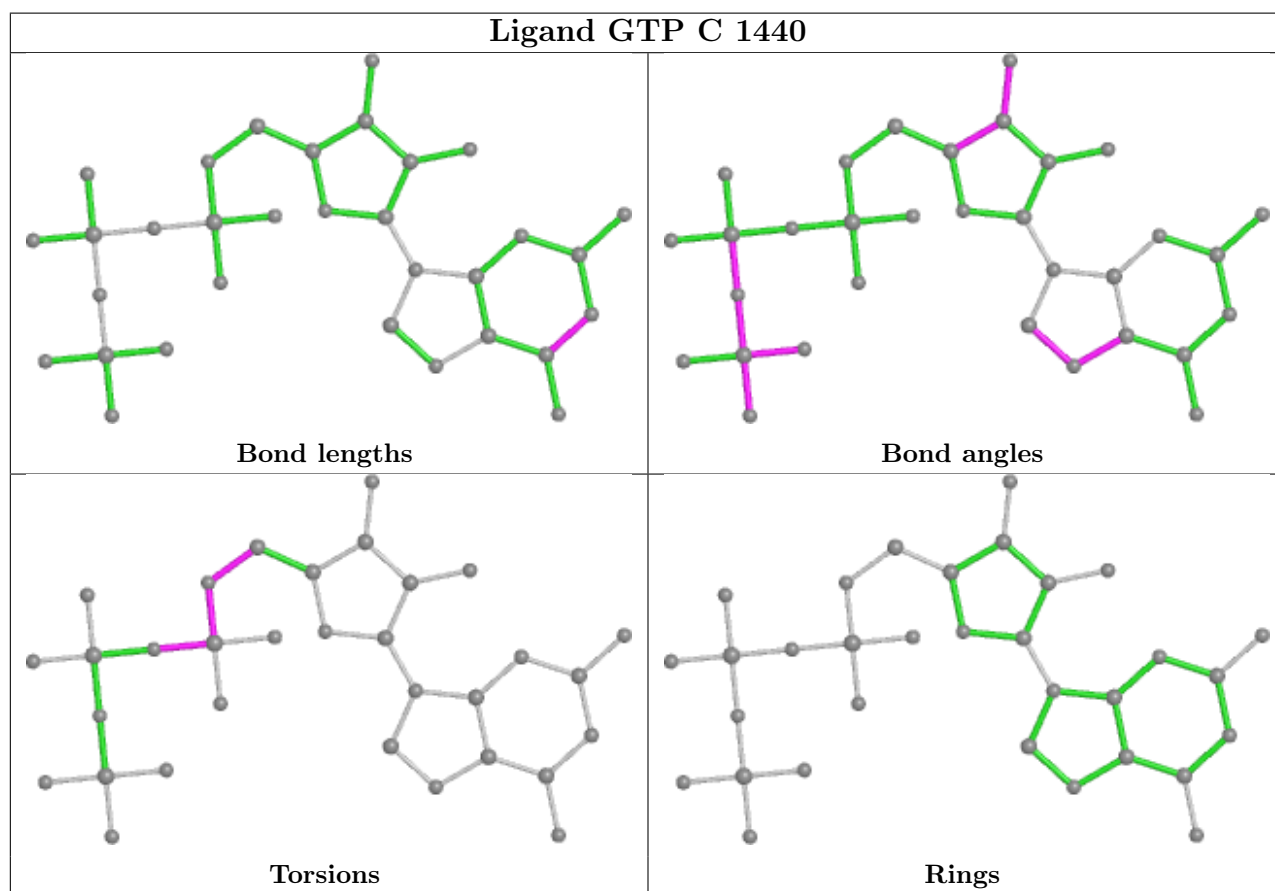
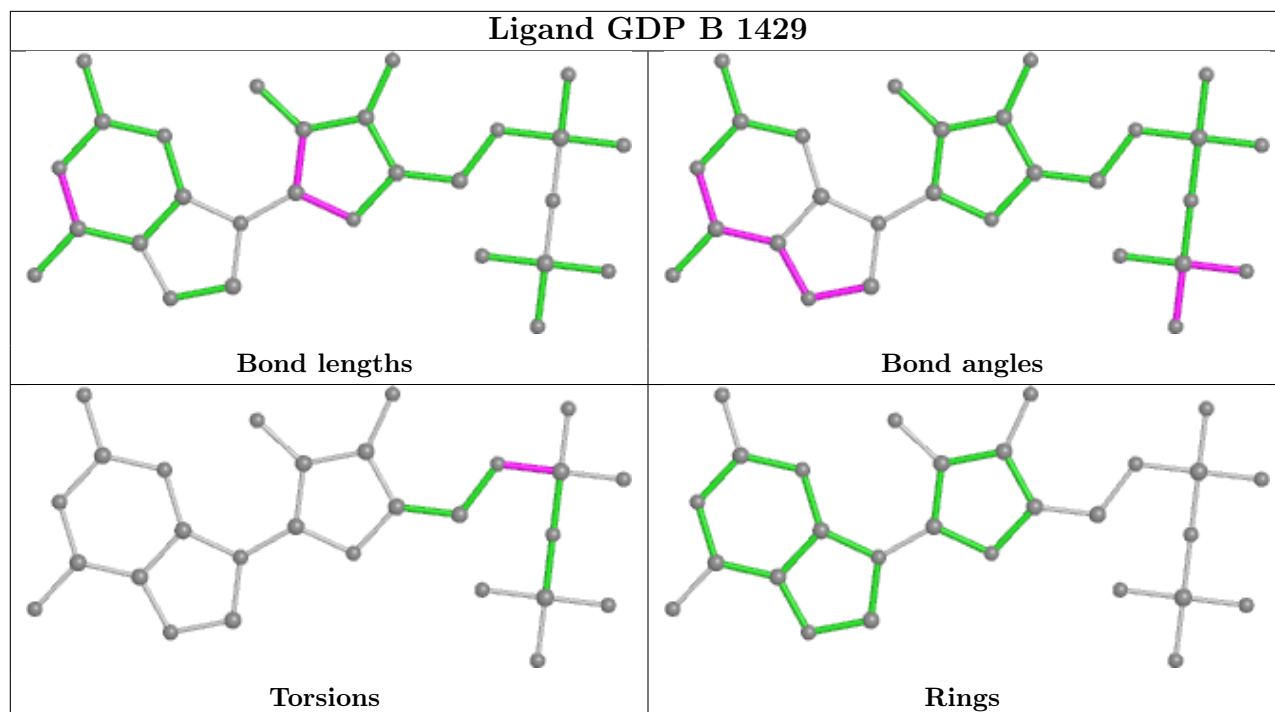
Mol	Chain	Res	Type	Atoms
5	A	1438	GTP	C5'-O5'-PA-O1A
5	A	1438	GTP	C5'-O5'-PA-O2A
5	C	1440	GTP	C5'-O5'-PA-O1A
5	C	1440	GTP	C5'-O5'-PA-O2A
5	D	1431	GTP	PB-O3B-PG-O3G

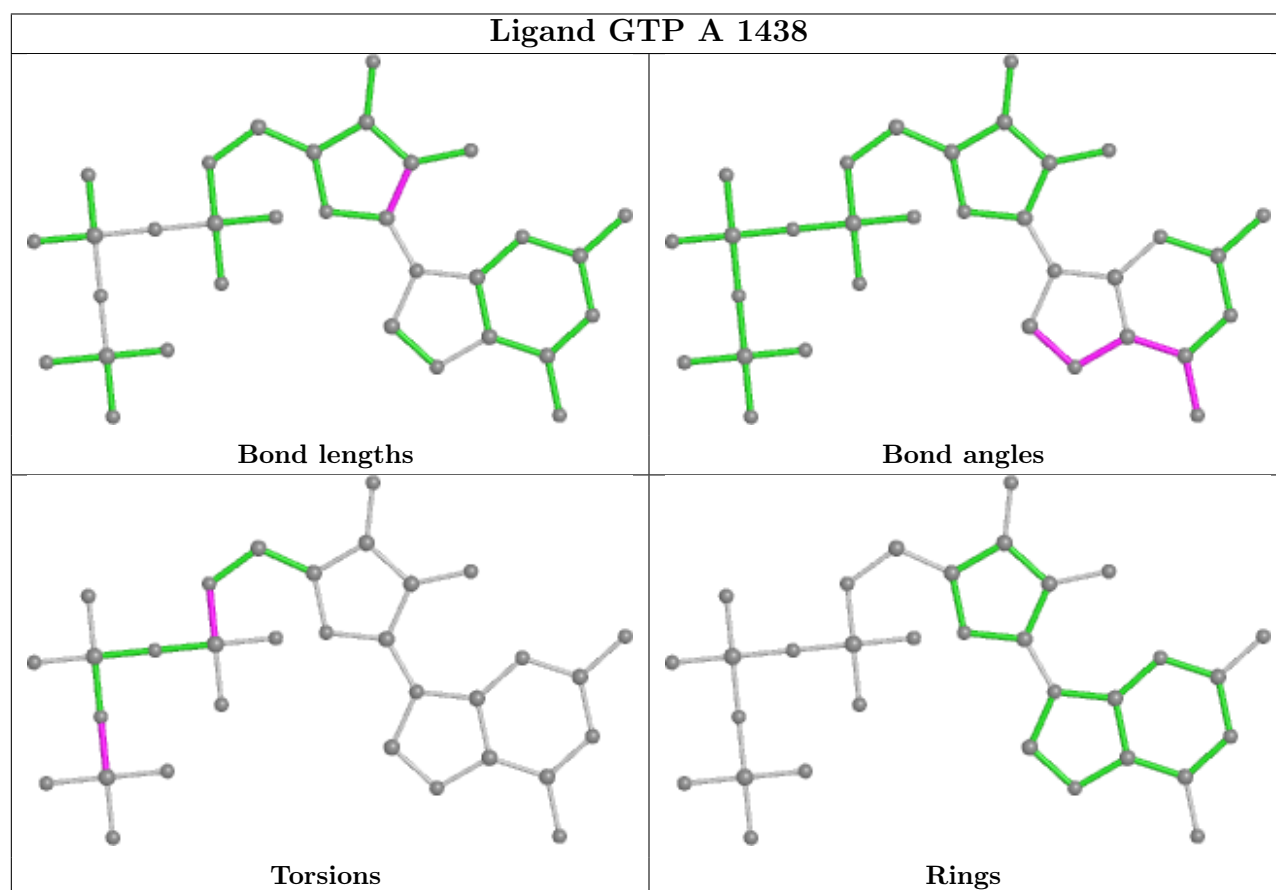
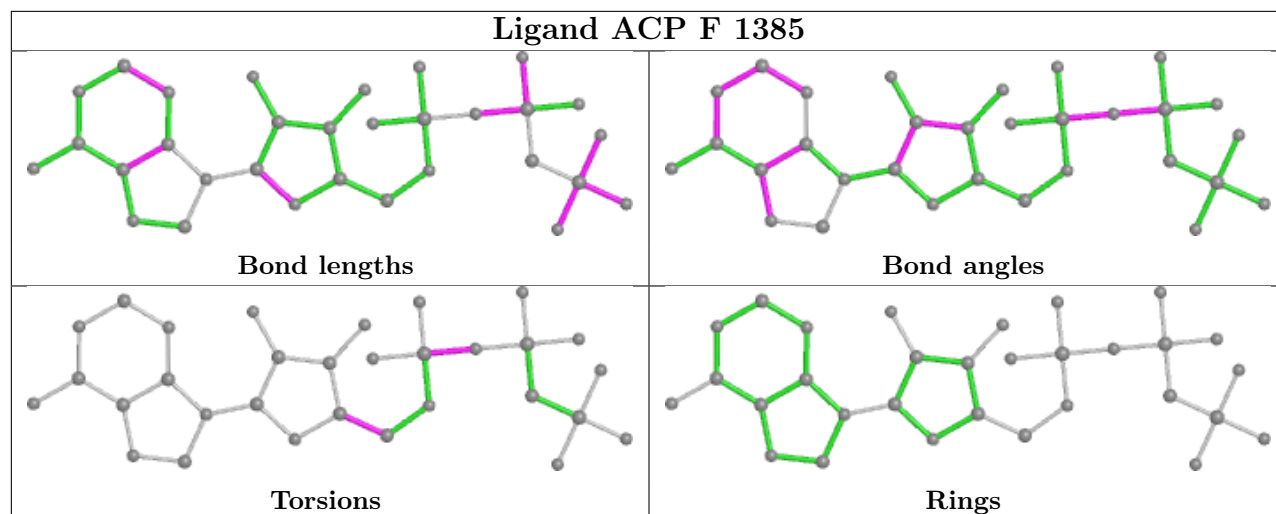
There are no ring outliers.

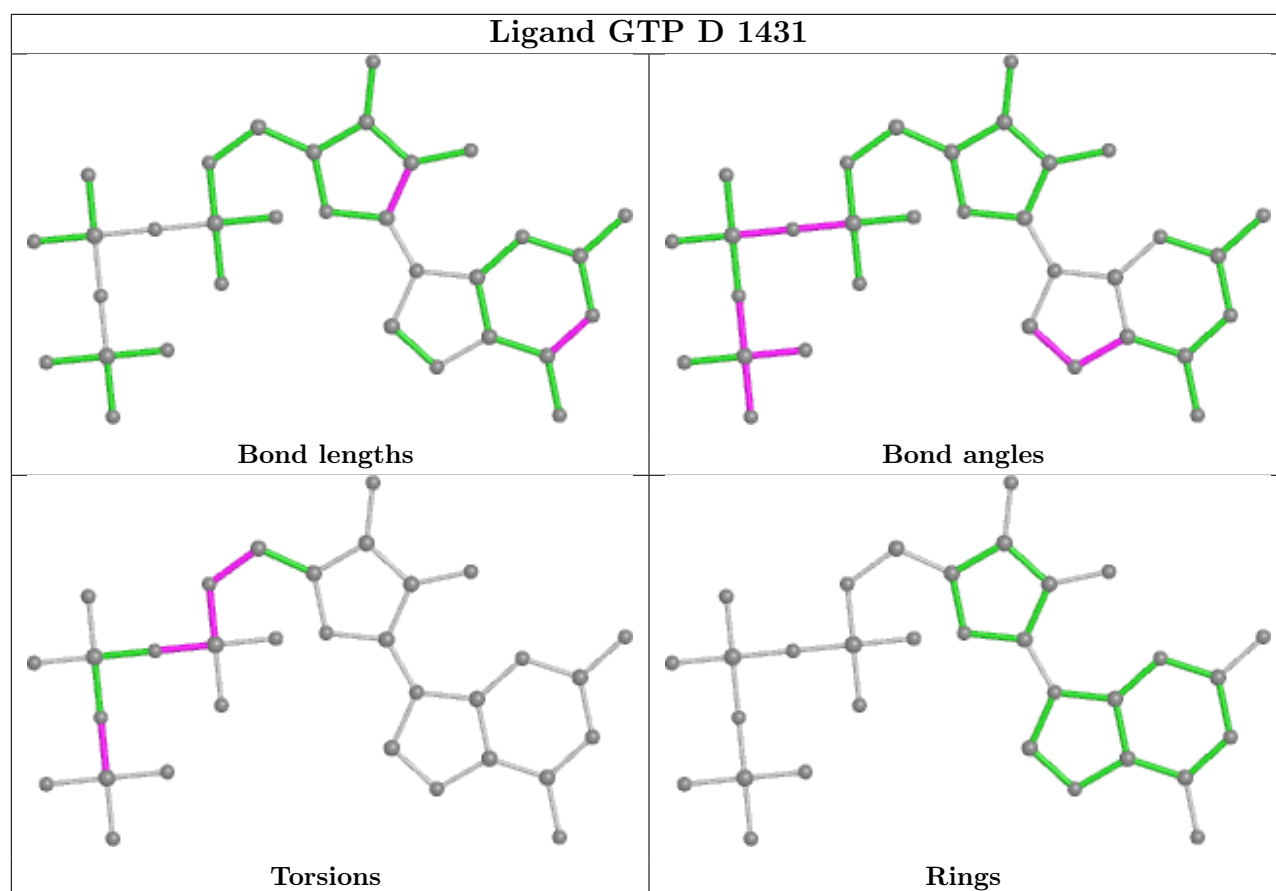
No monomer is involved in short contacts.

The following is a two-dimensional graphical depiction of Mogul quality analysis of bond lengths, bond angles, torsion angles, and ring geometry for all instances of the Ligand of Interest. In addition, ligands with molecular weight > 250 and outliers as shown on the validation Tables will also be included. For torsion angles, if less than 5% of the Mogul distribution of torsion angles is within 10 degrees of the torsion angle in question, then that torsion angle is considered an outlier. Any bond that is central to one or more torsion angles identified as an outlier by Mogul will be highlighted in the graph. For rings, the root-mean-square deviation (RMSD) between the ring in question and similar rings identified by Mogul is calculated over all ring torsion angles. If the average RMSD is greater than 60 degrees and the minimal RMSD between the ring in question and any Mogul-identified rings is also greater than 60 degrees, then that ring is considered an outlier. The outliers are highlighted in purple. The color gray indicates Mogul did not find sufficient equivalents in the CSD to analyse the geometry.









5.7 Other polymers [\(i\)](#)

There are no such residues in this entry.

5.8 Polymer linkage issues [\(i\)](#)

There are no chain breaks in this entry.

6 Fit of model and data [i](#)

6.1 Protein, DNA and RNA chains [i](#)

In the following table, the column labelled ‘#RSRZ> 2’ contains the number (and percentage) of RSRZ outliers, followed by percent RSRZ outliers for the chain as percentile scores relative to all X-ray entries and entries of similar resolution. The OWAB column contains the minimum, median, 95th percentile and maximum values of the occupancy-weighted average B-factor per residue. The column labelled ‘Q< 0.9’ lists the number of (and percentage) of residues with an average occupancy less than 0.9.

Mol	Chain	Analysed	<RSRZ>	#RSRZ>2	OWAB(Å ²)	Q<0.9
1	A	429/451 (95%)	0.11	18 (4%) 36 30	48, 76, 119, 147	0
1	C	439/451 (97%)	-0.10	9 (2%) 63 58	44, 62, 101, 128	0
2	B	419/445 (94%)	0.08	12 (2%) 51 45	50, 69, 103, 126	1 (0%)
2	D	419/445 (94%)	0.37	34 (8%) 12 8	56, 88, 126, 149	4 (0%)
3	E	119/143 (83%)	0.45	11 (9%) 9 6	55, 87, 125, 132	0
4	F	308/384 (80%)	0.36	31 (10%) 7 4	54, 91, 132, 162	0
All	All	2133/2319 (91%)	0.17	115 (5%) 25 20	44, 77, 120, 162	5 (0%)

The worst 5 of 115 RSRZ outliers are listed below:

Mol	Chain	Res	Type	RSRZ
4	F	182	ILE	6.0
1	A	282	TYR	5.7
3	E	26	PRO	5.7
1	A	247	ALA	5.7
4	F	233	PHE	5.6

6.2 Non-standard residues in protein, DNA, RNA chains [i](#)

There are no non-standard protein/DNA/RNA residues in this entry.

6.3 Carbohydrates [i](#)

There are no monosaccharides in this entry.

6.4 Ligands

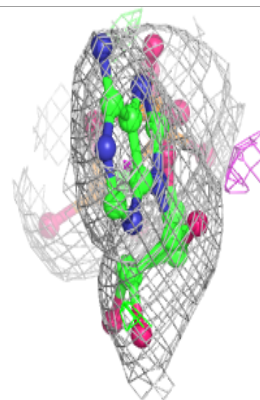
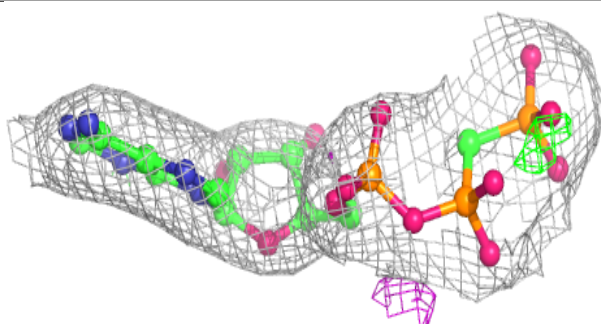
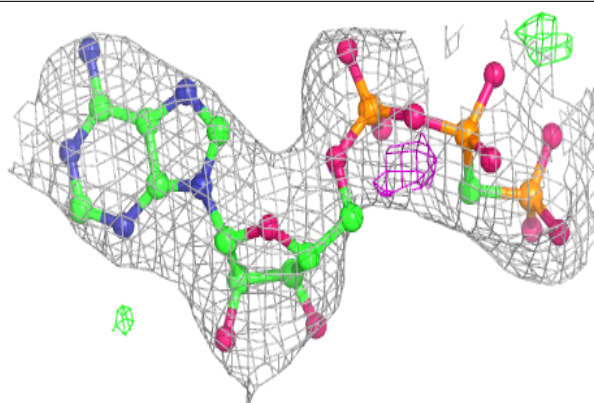
In the following table, the Atoms column lists the number of modelled atoms in the group and the number defined in the chemical component dictionary. The B-factors column lists the minimum, median, 95th percentile and maximum values of B factors of atoms in the group. The column labelled 'Q< 0.9' lists the number of atoms with occupancy less than 0.9.

Mol	Type	Chain	Res	Atoms	RSCC	RSR	B-factors(Å ²)	Q<0.9
6	MG	D	1432	1/1	0.88	0.26	85,85,85,85	0
6	MG	B	1430	1/1	0.90	0.61	75,75,75,75	0
11	ACP	F	1385	31/31	0.92	0.15	86,94,121,132	0
7	CA	B	1431	1/1	0.93	0.14	97,97,97,97	0
7	CA	A	1440	1/1	0.93	0.06	97,97,97,97	0
7	CA	C	1442	1/1	0.95	0.09	83,83,83,83	0
9	MES	B	1432	12/12	0.95	0.17	60,67,74,82	0
5	GTP	D	1431	32/32	0.95	0.12	69,79,97,108	0
10	X3H	C	1443	23/23	0.96	0.21	58,63,72,72	0
9	MES	B	1433	12/12	0.96	0.29	93,103,107,111	0
6	MG	A	1439	1/1	0.97	0.18	51,51,51,51	0
6	MG	C	1441	1/1	0.97	0.16	50,50,50,50	0
8	GDP	B	1429	28/28	0.98	0.21	47,55,58,66	0
5	GTP	C	1440	32/32	0.99	0.17	41,48,51,53	0
5	GTP	A	1438	32/32	0.99	0.23	44,52,55,57	0

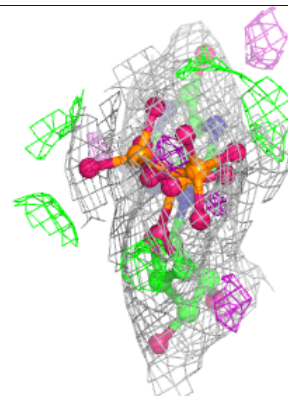
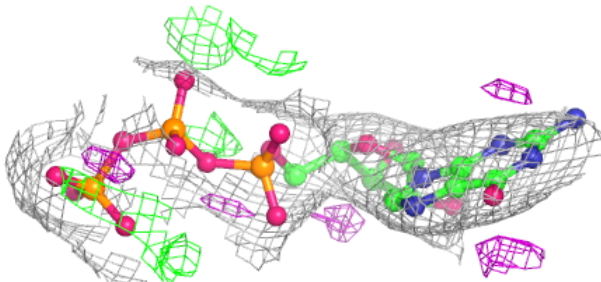
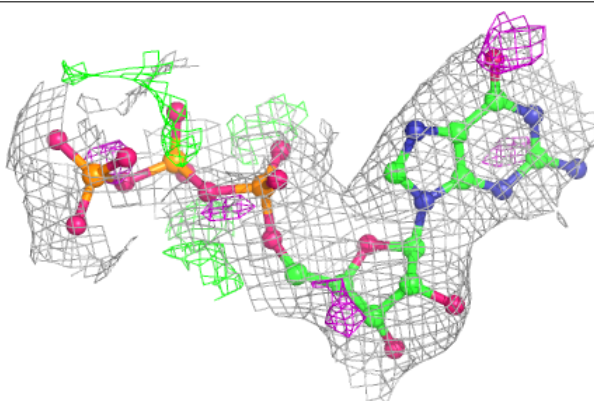
The following is a graphical depiction of the model fit to experimental electron density of all instances of the Ligand of Interest. In addition, ligands with molecular weight > 250 and outliers as shown on the geometry validation Tables will also be included. Each fit is shown from different orientation to approximate a three-dimensional view.

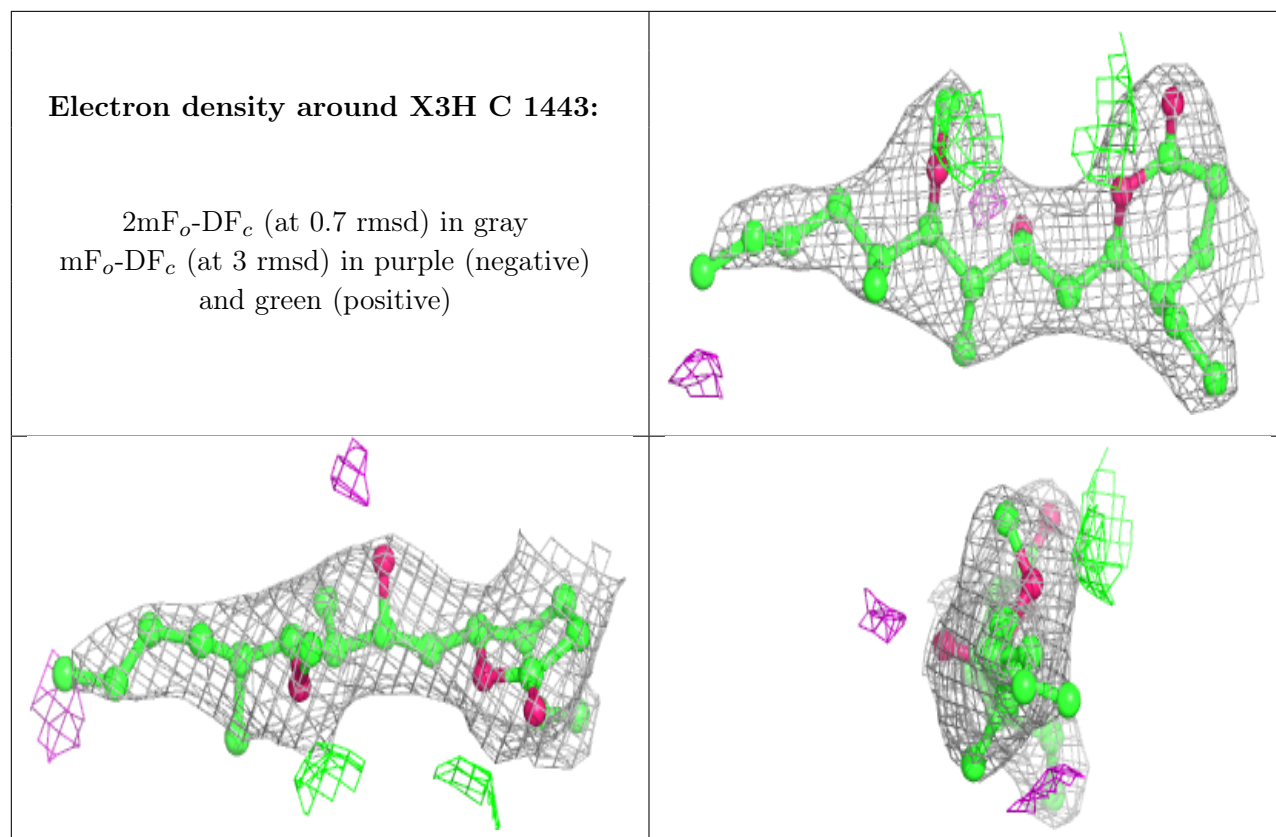
Electron density around ACP F 1385:

$2mF_o-DF_c$ (at 0.7 rmsd) in gray
 mF_o-DF_c (at 3 rmsd) in purple (negative)
and green (positive)

**Electron density around GTP D 1431:**

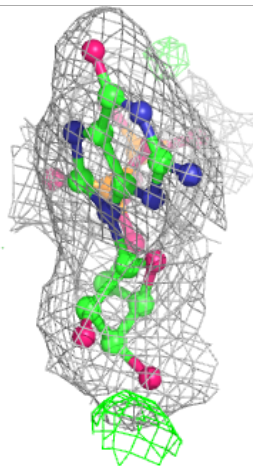
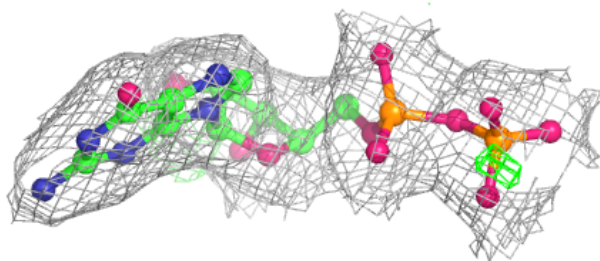
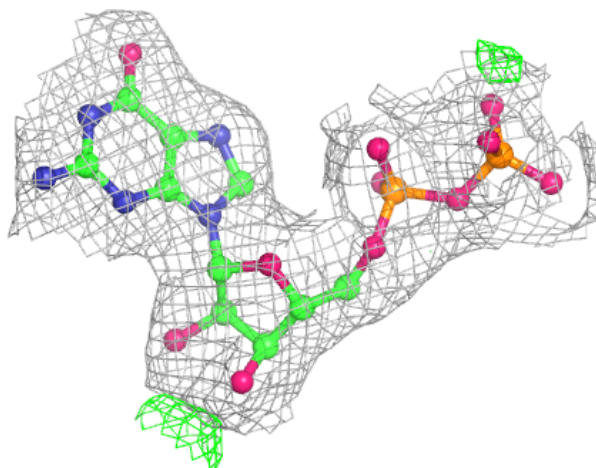
$2mF_o-DF_c$ (at 0.7 rmsd) in gray
 mF_o-DF_c (at 3 rmsd) in purple (negative)
and green (positive)





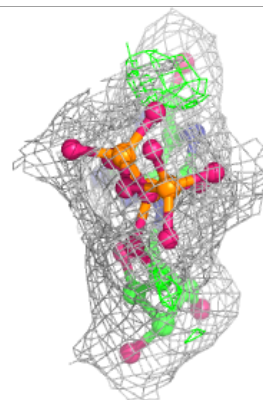
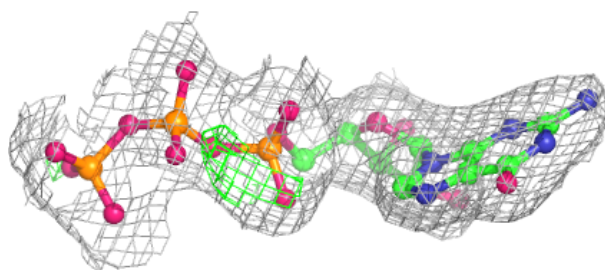
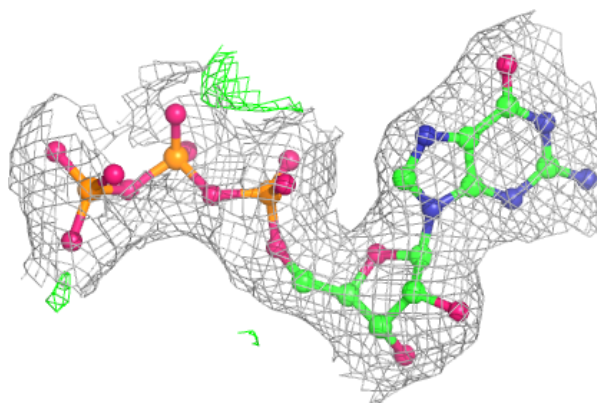
Electron density around GDP B 1429:

$2mF_o-DF_c$ (at 0.7 rmsd) in gray
 mF_o-DF_c (at 3 rmsd) in purple (negative)
and green (positive)

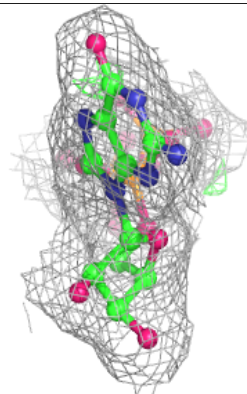
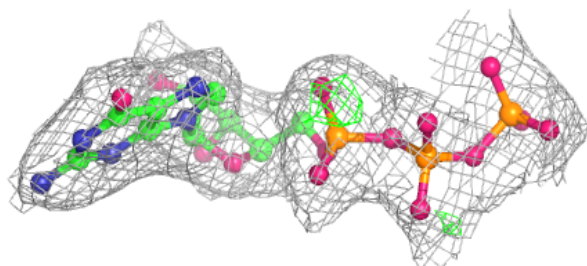
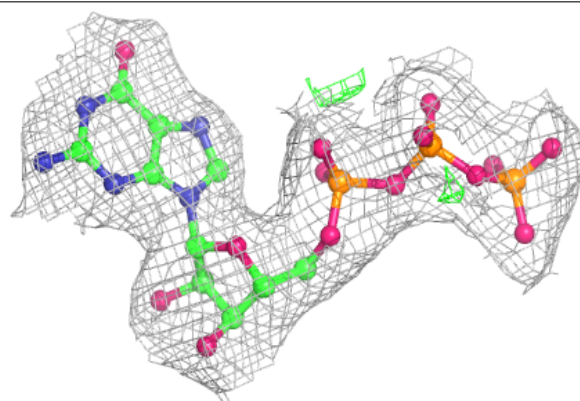


Electron density around GTP C 1440:

$2mF_o-DF_c$ (at 0.7 rmsd) in gray
 mF_o-DF_c (at 3 rmsd) in purple (negative)
and green (positive)

**Electron density around GTP A 1438:**

$2mF_o-DF_c$ (at 0.7 rmsd) in gray
 mF_o-DF_c (at 3 rmsd) in purple (negative)
and green (positive)



6.5 Other polymers [i](#)

There are no such residues in this entry.