



wwPDB X-ray Structure Validation Summary Report ⓘ

Sep 20, 2023 – 11:11 AM EDT

PDB ID : 5FAU
Title : wild-type choline TMA lyase in complex with choline
Authors : Funk, M.A.; Drennan, C.L.
Deposited on : 2015-12-12
Resolution : 1.90 Å(reported)

This is a wwPDB X-ray Structure Validation Summary Report for a publicly released PDB entry.

We welcome your comments at validation@mail.wwpdb.org

A user guide is available at

<https://www.wwpdb.org/validation/2017/XrayValidationReportHelp>

with specific help available everywhere you see the ⓘ symbol.

The types of validation reports are described at

<http://www.wwpdb.org/validation/2017/FAQs#types>.

The following versions of software and data (see [references ⓘ](#)) were used in the production of this report:

MolProbity : 4.02b-467
Mogul : 1.8.5 (274361), CSD as541be (2020)
Xtriage (Phenix) : 1.13
EDS : 2.35.1
Percentile statistics : 20191225.v01 (using entries in the PDB archive December 25th 2019)
Refmac : 5.8.0158
CCP4 : 7.0.044 (Gargrove)
Ideal geometry (proteins) : Engh & Huber (2001)
Ideal geometry (DNA, RNA) : Parkinson et al. (1996)
Validation Pipeline (wwPDB-VP) : 2.35.1

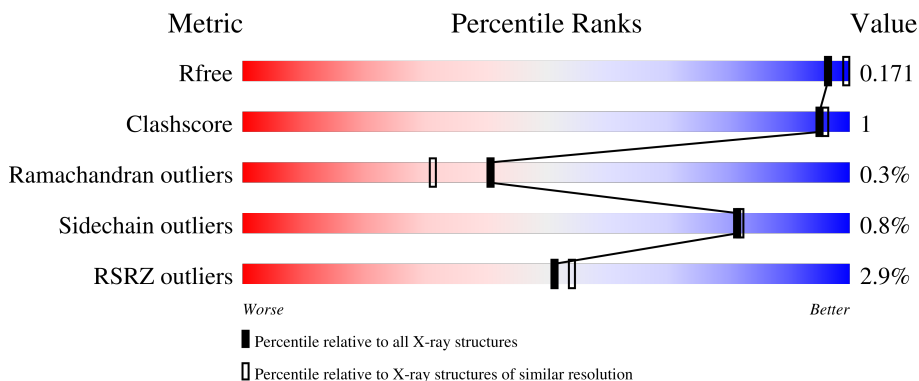
1 Overall quality at a glance

The following experimental techniques were used to determine the structure:

X-RAY DIFFRACTION

The reported resolution of this entry is 1.90 Å.

Percentile scores (ranging between 0-100) for global validation metrics of the entry are shown in the following graphic. The table shows the number of entries on which the scores are based.



Metric	Whole archive (#Entries)	Similar resolution (#Entries, resolution range(Å))
R_{free}	130704	6207 (1.90-1.90)
Clashscore	141614	6847 (1.90-1.90)
Ramachandran outliers	138981	6760 (1.90-1.90)
Sidechain outliers	138945	6760 (1.90-1.90)
RSRZ outliers	127900	6082 (1.90-1.90)

The table below summarises the geometric issues observed across the polymeric chains and their fit to the electron density. The red, orange, yellow and green segments of the lower bar indicate the fraction of residues that contain outliers for ≥ 3 , 2, 1 and 0 types of geometric quality criteria respectively. A grey segment represents the fraction of residues that are not modelled. The numeric value for each fraction is indicated below the corresponding segment, with a dot representing fractions $\leq 5\%$. The upper red bar (where present) indicates the fraction of residues that have poor fit to the electron density. The numeric value is given above the bar.

Mol	Chain	Length	Quality of chain
1	A	849	 8% 89% 6%
1	B	849	 % 90% 6%
1	C	849	 % 91% 6%
1	D	849	 % 90% 6%

2 Entry composition [i](#)

There are 4 unique types of molecules in this entry. The entry contains 52391 atoms, of which 24722 are hydrogens and 0 are deuteriums.

In the tables below, the ZeroOcc column contains the number of atoms modelled with zero occupancy, the AltConf column contains the number of residues with at least one atom in alternate conformation and the Trace column contains the number of residues modelled with at most 2 atoms.

- Molecule 1 is a protein called Choline trimethylamine-lyase.

Mol	Chain	Residues	Atoms						ZeroOcc	AltConf	Trace
			Total	C	H	N	O	S			
1	A	794	12401	3971	6138	1062	1185	45	0	0	0
1	B	795	12428	3979	6150	1064	1190	45	0	2	0
1	C	795	12426	3978	6149	1064	1190	45	0	2	0
1	D	795	12454	3985	6165	1068	1191	45	0	3	0

There are 84 discrepancies between the modelled and reference sequences:

Chain	Residue	Modelled	Actual	Comment	Reference
A	-2	MET	-	initiating methionine	UNP Q30W70
A	-1	GLY	-	expression tag	UNP Q30W70
A	0	SER	-	expression tag	UNP Q30W70
A	1	SER	-	expression tag	UNP Q30W70
A	2	HIS	-	expression tag	UNP Q30W70
A	3	HIS	-	expression tag	UNP Q30W70
A	4	HIS	-	expression tag	UNP Q30W70
A	5	HIS	-	expression tag	UNP Q30W70
A	6	HIS	-	expression tag	UNP Q30W70
A	7	HIS	-	expression tag	UNP Q30W70
A	8	SER	-	expression tag	UNP Q30W70
A	9	SER	-	expression tag	UNP Q30W70
A	10	GLY	-	expression tag	UNP Q30W70
A	11	LEU	-	expression tag	UNP Q30W70
A	12	VAL	-	expression tag	UNP Q30W70
A	13	PRO	-	expression tag	UNP Q30W70
A	14	ARG	-	expression tag	UNP Q30W70
A	15	GLY	-	expression tag	UNP Q30W70
A	16	SER	-	expression tag	UNP Q30W70
A	17	HIS	-	expression tag	UNP Q30W70
A	18	MET	-	expression tag	UNP Q30W70

Continued on next page...

Continued from previous page...

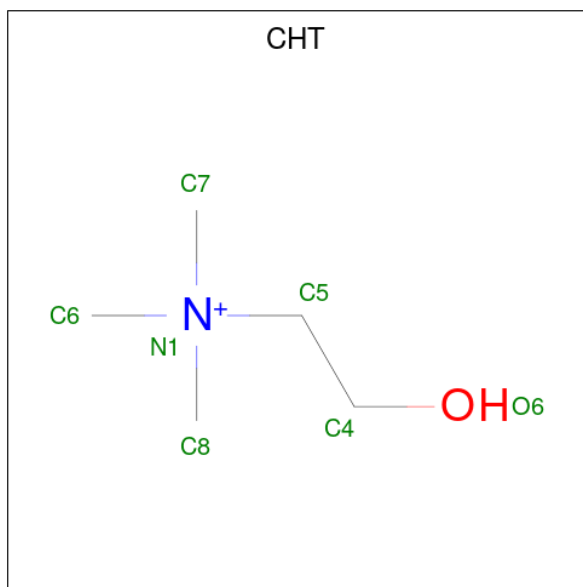
Chain	Residue	Modelled	Actual	Comment	Reference
B	-2	MET	-	initiating methionine	UNP Q30W70
B	-1	GLY	-	expression tag	UNP Q30W70
B	0	SER	-	expression tag	UNP Q30W70
B	1	SER	-	expression tag	UNP Q30W70
B	2	HIS	-	expression tag	UNP Q30W70
B	3	HIS	-	expression tag	UNP Q30W70
B	4	HIS	-	expression tag	UNP Q30W70
B	5	HIS	-	expression tag	UNP Q30W70
B	6	HIS	-	expression tag	UNP Q30W70
B	7	HIS	-	expression tag	UNP Q30W70
B	8	SER	-	expression tag	UNP Q30W70
B	9	SER	-	expression tag	UNP Q30W70
B	10	GLY	-	expression tag	UNP Q30W70
B	11	LEU	-	expression tag	UNP Q30W70
B	12	VAL	-	expression tag	UNP Q30W70
B	13	PRO	-	expression tag	UNP Q30W70
B	14	ARG	-	expression tag	UNP Q30W70
B	15	GLY	-	expression tag	UNP Q30W70
B	16	SER	-	expression tag	UNP Q30W70
B	17	HIS	-	expression tag	UNP Q30W70
B	18	MET	-	expression tag	UNP Q30W70
C	-2	MET	-	initiating methionine	UNP Q30W70
C	-1	GLY	-	expression tag	UNP Q30W70
C	0	SER	-	expression tag	UNP Q30W70
C	1	SER	-	expression tag	UNP Q30W70
C	2	HIS	-	expression tag	UNP Q30W70
C	3	HIS	-	expression tag	UNP Q30W70
C	4	HIS	-	expression tag	UNP Q30W70
C	5	HIS	-	expression tag	UNP Q30W70
C	6	HIS	-	expression tag	UNP Q30W70
C	7	HIS	-	expression tag	UNP Q30W70
C	8	SER	-	expression tag	UNP Q30W70
C	9	SER	-	expression tag	UNP Q30W70
C	10	GLY	-	expression tag	UNP Q30W70
C	11	LEU	-	expression tag	UNP Q30W70
C	12	VAL	-	expression tag	UNP Q30W70
C	13	PRO	-	expression tag	UNP Q30W70
C	14	ARG	-	expression tag	UNP Q30W70
C	15	GLY	-	expression tag	UNP Q30W70
C	16	SER	-	expression tag	UNP Q30W70
C	17	HIS	-	expression tag	UNP Q30W70
C	18	MET	-	expression tag	UNP Q30W70

Continued on next page...

Continued from previous page...

Chain	Residue	Modelled	Actual	Comment	Reference
D	-2	MET	-	initiating methionine	UNP Q30W70
D	-1	GLY	-	expression tag	UNP Q30W70
D	0	SER	-	expression tag	UNP Q30W70
D	1	SER	-	expression tag	UNP Q30W70
D	2	HIS	-	expression tag	UNP Q30W70
D	3	HIS	-	expression tag	UNP Q30W70
D	4	HIS	-	expression tag	UNP Q30W70
D	5	HIS	-	expression tag	UNP Q30W70
D	6	HIS	-	expression tag	UNP Q30W70
D	7	HIS	-	expression tag	UNP Q30W70
D	8	SER	-	expression tag	UNP Q30W70
D	9	SER	-	expression tag	UNP Q30W70
D	10	GLY	-	expression tag	UNP Q30W70
D	11	LEU	-	expression tag	UNP Q30W70
D	12	VAL	-	expression tag	UNP Q30W70
D	13	PRO	-	expression tag	UNP Q30W70
D	14	ARG	-	expression tag	UNP Q30W70
D	15	GLY	-	expression tag	UNP Q30W70
D	16	SER	-	expression tag	UNP Q30W70
D	17	HIS	-	expression tag	UNP Q30W70
D	18	MET	-	expression tag	UNP Q30W70

- Molecule 2 is CHOLINE ION (three-letter code: CHT) (formula: C₅H₁₄NO).



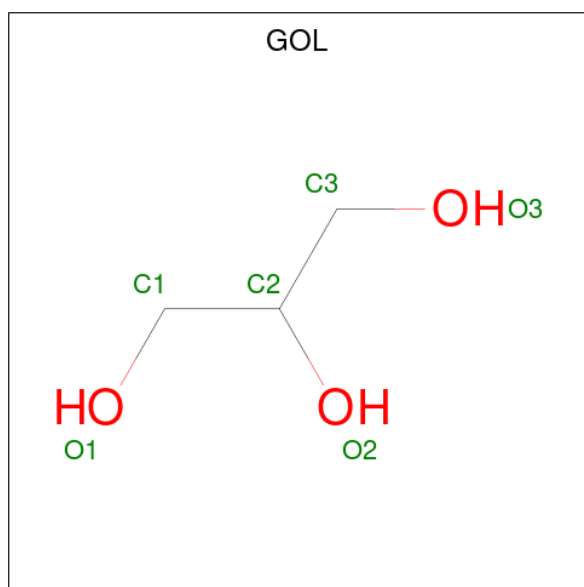
Mol	Chain	Residues	Atoms				ZeroOcc	AltConf	
			Total	C	H	N			O
2	A	1	21	5	14	1	1	0	0

Continued on next page...

Continued from previous page...

Mol	Chain	Residues	Atoms					ZeroOcc	AltConf
2	B	1	Total	C	H	N	O	0	0
			21	5	14	1	1		
2	C	1	Total	C	H	N	O	0	0
			21	5	14	1	1		
2	D	1	Total	C	H	N	O	0	0
			21	5	14	1	1		

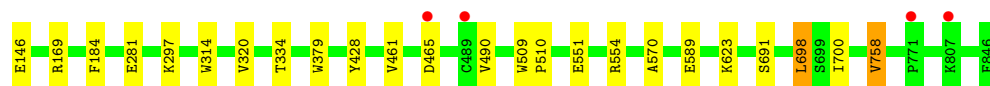
- Molecule 3 is GLYCEROL (three-letter code: GOL) (formula: $C_3H_8O_3$).



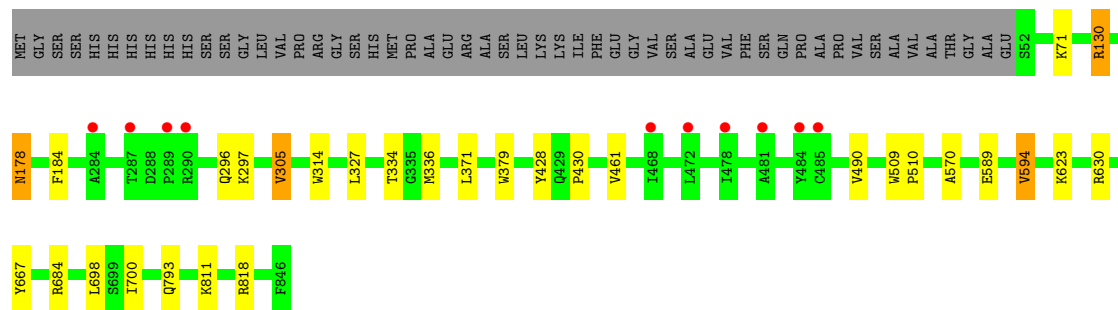
Mol	Chain	Residues	Atoms				ZeroOcc	AltConf
3	A	1	Total	C	H	O	0	0
			14	3	8	3		
3	B	1	Total	C	H	O	0	0
			14	3	8	3		
3	B	1	Total	C	H	O	0	0
			14	3	8	3		
3	C	1	Total	C	H	O	0	0
			14	3	8	3		
3	C	1	Total	C	H	O	0	0
			14	3	8	3		
3	C	1	Total	C	H	O	0	0
			14	3	8	3		
3	D	1	Total	C	H	O	0	0
			14	3	8	3		
3	D	1	Total	C	H	O	0	0
			14	3	8	3		

- Molecule 4 is water.

Mol	Chain	Residues	Atoms	ZeroOcc	AltConf
4	A	477	Total O 477 477	0	0
4	B	634	Total O 634 634	0	0
4	C	666	Total O 666 666	0	0
4	D	709	Total O 709 709	0	0



● Molecule 1: Choline trimethylamine-lyase



4 Data and refinement statistics i

Property	Value	Source
Space group	P 1 21 1	Depositor
Cell constants a, b, c, α , β , γ	79.61Å 234.87Å 104.99Å 90.00° 109.62° 90.00°	Depositor
Resolution (Å)	50.00 – 1.90 49.65 – 1.90	Depositor EDS
% Data completeness (in resolution range)	99.3 (50.00-1.90) 93.4 (49.65-1.90)	Depositor EDS
R_{merge}	(Not available)	Depositor
R_{sym}	0.09	Depositor
$\langle I/\sigma(I) \rangle$ ¹	1.38 (at 1.90Å)	Xtrriage
Refinement program	PHENIX (1.10_2155: ???)	Depositor
R, R_{free}	0.145 , 0.169 0.146 , 0.171	Depositor DCC
R_{free} test set	8482 reflections (3.00%)	wwPDB-VP
Wilson B-factor (Å ²)	26.2	Xtrriage
Anisotropy	0.149	Xtrriage
Bulk solvent k_{sol} (e/Å ³), B_{sol} (Å ²)	0.41 , 40.4	EDS
L-test for twinning ²	$\langle L \rangle = 0.49$, $\langle L^2 \rangle = 0.32$	Xtrriage
Estimated twinning fraction	0.022 for h,-k,-h-l	Xtrriage
F_o, F_c correlation	0.97	EDS
Total number of atoms	52391	wwPDB-VP
Average B, all atoms (Å ²)	38.0	wwPDB-VP

Xtrriage's analysis on translational NCS is as follows: *The largest off-origin peak in the Patterson function is 3.17% of the height of the origin peak. No significant pseudotranslation is detected.*

¹Intensities estimated from amplitudes.

²Theoretical values of $\langle |L| \rangle$, $\langle L^2 \rangle$ for acentric reflections are 0.5, 0.333 respectively for untwinned datasets, and 0.375, 0.2 for perfectly twinned datasets.

5 Model quality [i](#)

5.1 Standard geometry [i](#)

Bond lengths and bond angles in the following residue types are not validated in this section: CHT, GOL

The Z score for a bond length (or angle) is the number of standard deviations the observed value is removed from the expected value. A bond length (or angle) with $|Z| > 5$ is considered an outlier worth inspection. RMSZ is the root-mean-square of all Z scores of the bond lengths (or angles).

Mol	Chain	Bond lengths		Bond angles	
		RMSZ	# $ Z > 5$	RMSZ	# $ Z > 5$
1	A	0.40	0/6408	0.58	5/8678 (0.1%)
1	B	0.45	0/6431	0.57	2/8709 (0.0%)
1	C	0.48	2/6427 (0.0%)	0.59	3/8704 (0.0%)
1	D	0.49	1/6443 (0.0%)	0.62	9/8724 (0.1%)
All	All	0.46	3/25709 (0.0%)	0.59	19/34815 (0.1%)

All (3) bond length outliers are listed below:

Mol	Chain	Res	Type	Atoms	Z	Observed(Å)	Ideal(Å)
1	C	119	GLU	CB-CG	-7.03	1.38	1.52
1	C	589	GLU	CG-CD	6.64	1.61	1.51
1	D	589	GLU	CG-CD	5.10	1.59	1.51

The worst 5 of 19 bond angle outliers are listed below:

Mol	Chain	Res	Type	Atoms	Z	Observed($^{\circ}$)	Ideal($^{\circ}$)
1	A	461	VAL	CG1-CB-CG2	9.57	126.21	110.90
1	A	758	VAL	CG1-CB-CG2	8.36	124.27	110.90
1	D	305	VAL	CG1-CB-CG2	8.17	123.97	110.90
1	C	461	VAL	CG1-CB-CG2	8.16	123.95	110.90
1	A	594	VAL	CG1-CB-CG2	8.12	123.90	110.90

There are no chirality outliers.

There are no planarity outliers.

5.2 Too-close contacts [i](#)

In the following table, the Non-H and H(model) columns list the number of non-hydrogen atoms and hydrogen atoms in the chain respectively. The H(added) column lists the number of hydrogen

atoms added and optimized by MolProbity. The Clashes column lists the number of clashes within the asymmetric unit, whereas Symm-Clashes lists symmetry-related clashes.

Mol	Chain	Non-H	H(model)	H(added)	Clashes	Symm-Clashes
1	A	6263	6138	6137	19	0
1	B	6278	6150	6137	16	1
1	C	6277	6149	6141	12	1
1	D	6289	6165	6152	15	0
2	A	7	14	14	0	0
2	B	7	14	14	0	0
2	C	7	14	14	0	0
2	D	7	14	14	0	0
3	A	6	8	8	0	0
3	B	12	16	16	0	0
3	C	18	24	24	0	0
3	D	12	16	16	0	0
4	A	477	0	0	5	0
4	B	634	0	0	5	0
4	C	666	0	0	6	0
4	D	709	0	0	7	1
All	All	27669	24722	24687	62	2

The all-atom clashscore is defined as the number of clashes found per 1000 atoms (including hydrogen atoms). The all-atom clashscore for this structure is 1.

The worst 5 of 62 close contacts within the same asymmetric unit are listed below, sorted by their clash magnitude.

Atom-1	Atom-2	Interatomic distance (Å)	Clash overlap (Å)
1:B:169:ARG:NH1	4:B:1002:HOH:O	2.15	0.78
1:D:296:GLN:OE1	4:D:1001:HOH:O	2.09	0.71
1:C:465[A]:ASP:OD1	4:C:1001:HOH:O	2.08	0.70
1:C:86:LYS:NZ	4:C:1003:HOH:O	2.24	0.70
1:C:623:LYS:NZ	4:C:1004:HOH:O	2.25	0.69

All (2) symmetry-related close contacts are listed below. The label for Atom-2 includes the symmetry operator and encoded unit-cell translations to be applied.

Atom-1	Atom-2	Interatomic distance (Å)	Clash overlap (Å)
4:D:1407:HOH:O	4:D:1447:HOH:O[1_655]	2.13	0.07
1:B:159:TYR:HH	1:C:281:GLU:OE1[1_556]	1.56	0.04

5.3 Torsion angles [i](#)

5.3.1 Protein backbone [i](#)

In the following table, the Percentiles column shows the percent Ramachandran outliers of the chain as a percentile score with respect to all X-ray entries followed by that with respect to entries of similar resolution.

The Analysed column shows the number of residues for which the backbone conformation was analysed, and the total number of residues.

Mol	Chain	Analysed	Favoured	Allowed	Outliers	Percentiles	
1	A	792/849 (93%)	768 (97%)	22 (3%)	2 (0%)	41	31
1	B	795/849 (94%)	774 (97%)	19 (2%)	2 (0%)	41	31
1	C	795/849 (94%)	771 (97%)	21 (3%)	3 (0%)	34	24
1	D	796/849 (94%)	775 (97%)	19 (2%)	2 (0%)	41	31
All	All	3178/3396 (94%)	3088 (97%)	81 (2%)	9 (0%)	41	31

5 of 9 Ramachandran outliers are listed below:

Mol	Chain	Res	Type
1	A	700	ILE
1	B	700	ILE
1	C	700	ILE
1	D	700	ILE
1	A	490	VAL

5.3.2 Protein sidechains [i](#)

In the following table, the Percentiles column shows the percent sidechain outliers of the chain as a percentile score with respect to all X-ray entries followed by that with respect to entries of similar resolution.

The Analysed column shows the number of residues for which the sidechain conformation was analysed, and the total number of residues.

Mol	Chain	Analysed	Rotameric	Outliers	Percentiles	
1	A	669/712 (94%)	659 (98%)	10 (2%)	65	62
1	B	672/712 (94%)	668 (99%)	4 (1%)	86	87
1	C	671/712 (94%)	668 (100%)	3 (0%)	91	91
1	D	673/712 (94%)	668 (99%)	5 (1%)	84	84
All	All	2685/2848 (94%)	2663 (99%)	22 (1%)	81	82

5 of 22 residues with a non-rotameric sidechain are listed below:

Mol	Chain	Res	Type
1	C	320	VAL
1	D	178	ASN
1	C	698	LEU
1	D	305	VAL
1	A	757	MET

Sometimes sidechains can be flipped to improve hydrogen bonding and reduce clashes. There are no such sidechains identified.

5.3.3 RNA [i](#)

There are no RNA molecules in this entry.

5.4 Non-standard residues in protein, DNA, RNA chains [i](#)

There are no non-standard protein/DNA/RNA residues in this entry.

5.5 Carbohydrates [i](#)

There are no monosaccharides in this entry.

5.6 Ligand geometry [i](#)

12 ligands are modelled in this entry.

In the following table, the Counts columns list the number of bonds (or angles) for which Mogul statistics could be retrieved, the number of bonds (or angles) that are observed in the model and the number of bonds (or angles) that are defined in the Chemical Component Dictionary. The Link column lists molecule types, if any, to which the group is linked. The Z score for a bond length (or angle) is the number of standard deviations the observed value is removed from the expected value. A bond length (or angle) with $|Z| > 2$ is considered an outlier worth inspection. RMSZ is the root-mean-square of all Z scores of the bond lengths (or angles).

Mol	Type	Chain	Res	Link	Bond lengths			Bond angles		
					Counts	RMSZ	$\# Z > 2$	Counts	RMSZ	$\# Z > 2$
3	GOL	D	902	-	5,5,5	0.36	0	5,5,5	0.30	0
2	CHT	B	901	-	6,6,6	1.15	0	8,8,8	0.61	0
3	GOL	C	902	-	5,5,5	0.37	0	5,5,5	0.34	0
2	CHT	D	901	-	6,6,6	1.32	1 (16%)	8,8,8	0.50	0
3	GOL	C	903	-	5,5,5	0.37	0	5,5,5	0.46	0

Mol	Type	Chain	Res	Link	Bond lengths			Bond angles		
					Counts	RMSZ	# Z > 2	Counts	RMSZ	# Z > 2
3	GOL	D	903	-	5,5,5	0.38	0	5,5,5	0.23	0
3	GOL	C	904	-	5,5,5	0.59	0	5,5,5	0.52	0
2	CHT	A	901	-	6,6,6	1.33	1 (16%)	8,8,8	0.62	0
3	GOL	A	902	-	5,5,5	0.34	0	5,5,5	0.24	0
3	GOL	B	903	-	5,5,5	0.38	0	5,5,5	0.34	0
3	GOL	B	902	-	5,5,5	0.42	0	5,5,5	0.12	0
2	CHT	C	901	-	6,6,6	1.24	0	8,8,8	0.28	0

In the following table, the Chirals column lists the number of chiral outliers, the number of chiral centers analysed, the number of these observed in the model and the number defined in the Chemical Component Dictionary. Similar counts are reported in the Torsion and Rings columns. '-' means no outliers of that kind were identified.

Mol	Type	Chain	Res	Link	Chirals	Torsions	Rings
3	GOL	D	902	-	-	0/4/4/4	-
2	CHT	B	901	-	-	0/4/4/4	-
3	GOL	C	902	-	-	0/4/4/4	-
2	CHT	D	901	-	-	3/4/4/4	-
3	GOL	C	903	-	-	3/4/4/4	-
3	GOL	D	903	-	-	2/4/4/4	-
3	GOL	C	904	-	-	2/4/4/4	-
2	CHT	A	901	-	-	1/4/4/4	-
3	GOL	A	902	-	-	0/4/4/4	-
3	GOL	B	903	-	-	0/4/4/4	-
3	GOL	B	902	-	-	0/4/4/4	-
2	CHT	C	901	-	-	0/4/4/4	-

All (2) bond length outliers are listed below:

Mol	Chain	Res	Type	Atoms	Z	Observed(Å)	Ideal(Å)
2	D	901	CHT	C8-N1	-2.26	1.43	1.50
2	A	901	CHT	C8-N1	-2.10	1.43	1.50

There are no bond angle outliers.

There are no chirality outliers.

5 of 11 torsion outliers are listed below:

Mol	Chain	Res	Type	Atoms
3	C	903	GOL	C1-C2-C3-O3
3	C	904	GOL	C1-C2-C3-O3

Continued on next page...

Continued from previous page...

Mol	Chain	Res	Type	Atoms
3	D	903	GOL	O1-C1-C2-C3
3	C	903	GOL	O2-C2-C3-O3
3	D	903	GOL	O1-C1-C2-O2

There are no ring outliers.

No monomer is involved in short contacts.

5.7 Other polymers [i](#)

There are no such residues in this entry.

5.8 Polymer linkage issues [i](#)

There are no chain breaks in this entry.

6 Fit of model and data [i](#)

6.1 Protein, DNA and RNA chains [i](#)

In the following table, the column labelled ‘#RSRZ > 2’ contains the number (and percentage) of RSRZ outliers, followed by percent RSRZ outliers for the chain as percentile scores relative to all X-ray entries and entries of similar resolution. The OWAB column contains the minimum, median, 95th percentile and maximum values of the occupancy-weighted average B-factor per residue. The column labelled ‘Q < 0.9’ lists the number of (and percentage) of residues with an average occupancy less than 0.9.

Mol	Chain	Analysed	<RSRZ>	#RSRZ>2	OWAB(Å ²)	Q<0.9
1	A	794/849 (93%)	0.21	65 (8%) 11 13	25, 40, 62, 85	0
1	B	795/849 (93%)	-0.05	12 (1%) 73 76	22, 33, 50, 62	0
1	C	795/849 (93%)	-0.21	5 (0%) 89 90	20, 30, 46, 59	0
1	D	795/849 (93%)	-0.26	10 (1%) 77 79	20, 28, 44, 70	0
All	All	3179/3396 (93%)	-0.08	92 (2%) 51 54	20, 33, 54, 85	0

The worst 5 of 92 RSRZ outliers are listed below:

Mol	Chain	Res	Type	RSRZ
1	A	630	ARG	5.0
1	A	625	LEU	4.9
1	A	807	LYS	4.7
1	A	290	ARG	4.1
1	A	540	ASP	3.8

6.2 Non-standard residues in protein, DNA, RNA chains [i](#)

There are no non-standard protein/DNA/RNA residues in this entry.

6.3 Carbohydrates [i](#)

There are no monosaccharides in this entry.

6.4 Ligands [i](#)

In the following table, the Atoms column lists the number of modelled atoms in the group and the number defined in the chemical component dictionary. The B-factors column lists the minimum, median, 95th percentile and maximum values of B factors of atoms in the group. The column labelled ‘Q < 0.9’ lists the number of atoms with occupancy less than 0.9.

Mol	Type	Chain	Res	Atoms	RSCC	RSR	B-factors(\AA^2)	Q<0.9
3	GOL	D	903	6/6	0.62	0.22	72,89,104,107	0
3	GOL	C	904	6/6	0.75	0.27	62,74,77,78	0
3	GOL	B	902	6/6	0.82	0.26	58,69,73,74	0
3	GOL	B	903	6/6	0.85	0.22	41,50,50,51	0
3	GOL	A	902	6/6	0.88	0.28	58,70,72,72	0
3	GOL	C	903	6/6	0.91	0.17	52,62,63,63	0
3	GOL	D	902	6/6	0.95	0.15	35,42,44,44	0
3	GOL	C	902	6/6	0.95	0.14	40,48,52,52	0
2	CHT	B	901	7/7	0.96	0.18	27,33,34,34	0
2	CHT	D	901	7/7	0.97	0.13	27,33,35,35	0
2	CHT	A	901	7/7	0.98	0.17	34,41,43,43	0
2	CHT	C	901	7/7	0.99	0.17	24,29,31,31	0

6.5 Other polymers [i](#)

There are no such residues in this entry.