



Full wwPDB X-ray Structure Validation Report ⓘ

Sep 20, 2023 – 07:25 AM EDT

PDB ID : 5EAN
Title : Crystal structure of Dna2 in complex with a 5' overhang DNA
Authors : Zhou, C.; Pourmal, S.; Pavletich, N.P.
Deposited on : 2015-10-16
Resolution : 2.36 Å(reported)

This is a Full wwPDB X-ray Structure Validation Report for a publicly released PDB entry.

We welcome your comments at validation@mail.wwpdb.org

A user guide is available at

<https://www.wwpdb.org/validation/2017/XrayValidationReportHelp>

with specific help available everywhere you see the ⓘ symbol.

The types of validation reports are described at

<http://www.wwpdb.org/validation/2017/FAQs#types>.

The following versions of software and data (see [references ⓘ](#)) were used in the production of this report:

MolProbity : 4.02b-467
Mogul : 1.8.5 (274361), CSD as541be (2020)
Xtriage (Phenix) : 1.13
EDS : 2.35.1
buster-report : 1.1.7 (2018)
Percentile statistics : 20191225.v01 (using entries in the PDB archive December 25th 2019)
Refmac : 5.8.0158
CCP4 : 7.0.044 (Gargrove)
Ideal geometry (proteins) : Engh & Huber (2001)
Ideal geometry (DNA, RNA) : Parkinson et al. (1996)
Validation Pipeline (wwPDB-VP) : 2.35.1

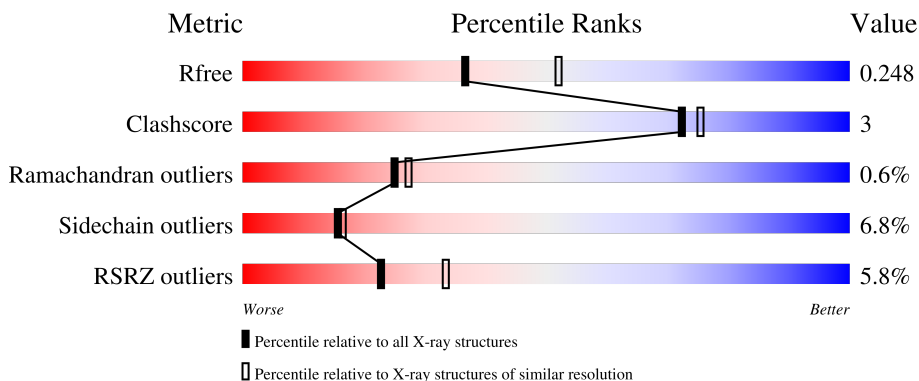
1 Overall quality at a glance

The following experimental techniques were used to determine the structure:

X-RAY DIFFRACTION

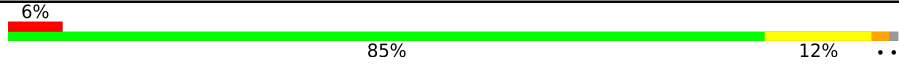
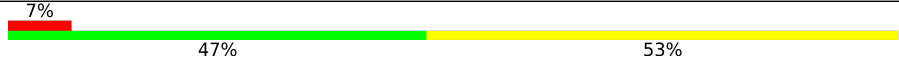
The reported resolution of this entry is 2.36 Å.

Percentile scores (ranging between 0-100) for global validation metrics of the entry are shown in the following graphic. The table shows the number of entries on which the scores are based.



Metric	Whole archive (#Entries)	Similar resolution (#Entries, resolution range(Å))
R_{free}	130704	1164 (2.36-2.36)
Clashscore	141614	1232 (2.36-2.36)
Ramachandran outliers	138981	1211 (2.36-2.36)
Sidechain outliers	138945	1212 (2.36-2.36)
RSRZ outliers	127900	1150 (2.36-2.36)

The table below summarises the geometric issues observed across the polymeric chains and their fit to the electron density. The red, orange, yellow and green segments of the lower bar indicate the fraction of residues that contain outliers for ≥ 3 , 2, 1 and 0 types of geometric quality criteria respectively. A grey segment represents the fraction of residues that are not modelled. The numeric value for each fraction is indicated below the corresponding segment, with a dot representing fractions $\leq 5\%$. The upper red bar (where present) indicates the fraction of residues that have poor fit to the electron density. The numeric value is given above the bar.

Mol	Chain	Length	Quality of chain
1	A	1059	 6% 85% 12% ..
2	B	15	 7% 47% 53%

2 Entry composition

There are 6 unique types of molecules in this entry. The entry contains 8652 atoms, of which 0 are hydrogens and 0 are deuteriums.

In the tables below, the ZeroOcc column contains the number of atoms modelled with zero occupancy, the AltConf column contains the number of residues with at least one atom in alternate conformation and the Trace column contains the number of residues modelled with at most 2 atoms.

- Molecule 1 is a protein called DNA replication ATP-dependent helicase/nuclease DNA2.

Mol	Chain	Residues	Atoms					ZeroOcc	AltConf	Trace
			Total	C	N	O	S			
1	A	1051	8302	5239	1464	1554	45	0	0	0

There are 3 discrepancies between the modelled and reference sequences:

Chain	Residue	Modelled	Actual	Comment	Reference
A	-2	GLY	-	expression tag	UNP Q6ZQJ5
A	-1	GLY	-	expression tag	UNP Q6ZQJ5
A	0	HIS	-	expression tag	UNP Q6ZQJ5

- Molecule 2 is a DNA chain called DNA (5'-D(P*AP*CP*TP*CP*TP*GP*CP*CP*AP*AP*GP*AP*GP*GP*A)-3').

Mol	Chain	Residues	Atoms					ZeroOcc	AltConf	Trace
			Total	C	N	O	P			
2	B	15	309	146	61	87	15	0	0	0

- Molecule 3 is IRON/SULFUR CLUSTER (three-letter code: SF4) (formula: Fe₄S₄).

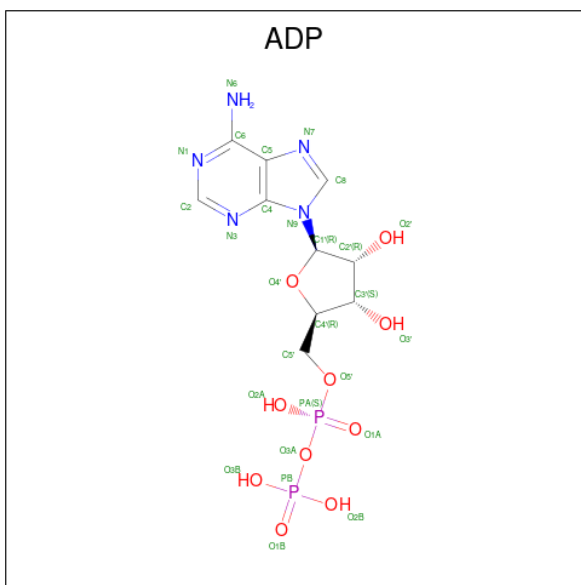


Mol	Chain	Residues	Atoms	ZeroOcc	AltConf
3	A	1	Total Fe S 8 4 4	0	0

- Molecule 4 is CALCIUM ION (three-letter code: CA) (formula: Ca).

Mol	Chain	Residues	Atoms	ZeroOcc	AltConf
4	A	1	Total Ca 1 1	0	0
4	B	1	Total Ca 1 1	0	0

- Molecule 5 is ADENOSINE-5'-DIPHOSPHATE (three-letter code: ADP) (formula: C₁₀H₁₅N₅O₁₀P₂).



Mol	Chain	Residues	Atoms					ZeroOcc	AltConf
			Total	C	N	O	P		
5	A	1	27	10	5	10	2	0	0

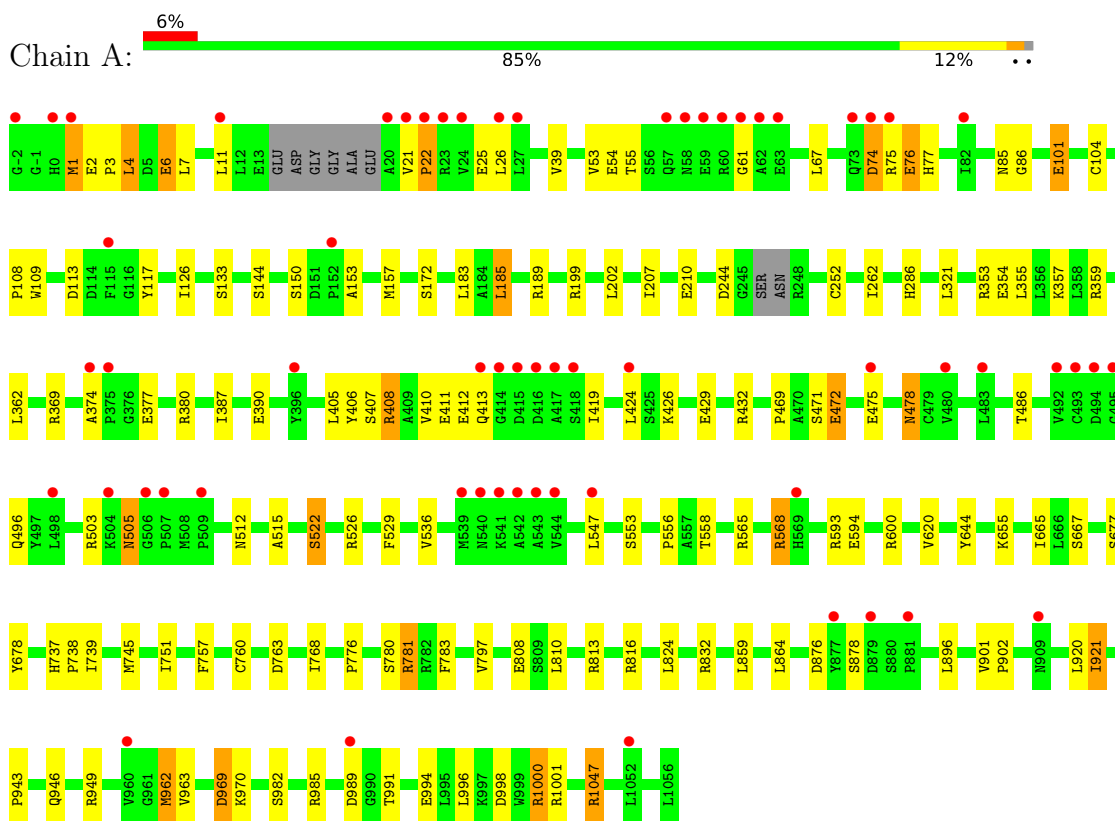
- Molecule 6 is water.

Mol	Chain	Residues	Atoms	ZeroOcc	AltConf
6	A	2	Total 2 O 2	0	0
6	B	2	Total 2 O 2	0	0

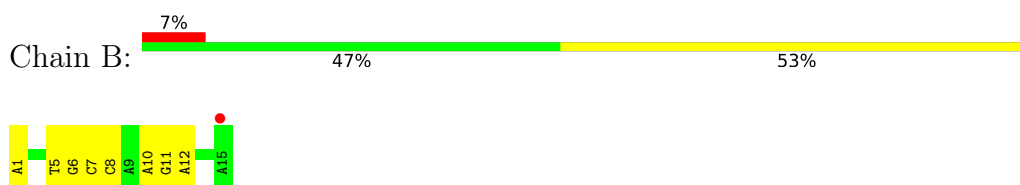
3 Residue-property plots [i](#)

These plots are drawn for all protein, RNA, DNA and oligosaccharide chains in the entry. The first graphic for a chain summarises the proportions of the various outlier classes displayed in the second graphic. The second graphic shows the sequence view annotated by issues in geometry and electron density. Residues are color-coded according to the number of geometric quality criteria for which they contain at least one outlier: green = 0, yellow = 1, orange = 2 and red = 3 or more. A red dot above a residue indicates a poor fit to the electron density ($RSRZ > 2$). Stretches of 2 or more consecutive residues without any outlier are shown as a green connector. Residues present in the sample, but not in the model, are shown in grey.

- Molecule 1: DNA replication ATP-dependent helicase/nuclease DNA2



- Molecule 2: DNA (5'-D(P*AP*CP*TP*CP*TP*GP*CP*CP*AP*AP*GP*AP*GP*GP*A)-3')



4 Data and refinement statistics

Property	Value	Source
Space group	P 2 21 21	Depositor
Cell constants a, b, c, α , β , γ	87.15Å 118.49Å 149.26Å 90.00° 90.00° 90.00°	Depositor
Resolution (Å)	50.00 – 2.36 49.00 – 2.36	Depositor EDS
% Data completeness (in resolution range)	92.3 (50.00-2.36) 92.3 (49.00-2.36)	Depositor EDS
R_{merge}	0.13	Depositor
R_{sym}	(Not available)	Depositor
$\langle I/\sigma(I) \rangle$ ¹	2.35 (at 2.37Å)	Xtrriage
Refinement program	REFMAC 5.8.0131	Depositor
R, R_{free}	0.208 , 0.246 0.212 , 0.248	Depositor DCC
R_{free} test set	1918 reflections (3.00%)	wwPDB-VP
Wilson B-factor (Å ²)	42.7	Xtrriage
Anisotropy	0.578	Xtrriage
Bulk solvent k_{sol} (e/Å ³), B_{sol} (Å ²)	0.31 , 36.0	EDS
L-test for twinning ²	$\langle L \rangle = 0.49$, $\langle L^2 \rangle = 0.32$	Xtrriage
Estimated twinning fraction	No twinning to report.	Xtrriage
F_o, F_c correlation	0.94	EDS
Total number of atoms	8652	wwPDB-VP
Average B, all atoms (Å ²)	66.0	wwPDB-VP

Xtrriage's analysis on translational NCS is as follows: *The largest off-origin peak in the Patterson function is 5.07% of the height of the origin peak. No significant pseudotranslation is detected.*

¹Intensities estimated from amplitudes.

²Theoretical values of $\langle |L| \rangle$, $\langle L^2 \rangle$ for acentric reflections are 0.5, 0.333 respectively for untwinned datasets, and 0.375, 0.2 for perfectly twinned datasets.

5 Model quality [i](#)

5.1 Standard geometry [i](#)

Bond lengths and bond angles in the following residue types are not validated in this section: ADP, CA, SF4

The Z score for a bond length (or angle) is the number of standard deviations the observed value is removed from the expected value. A bond length (or angle) with $|Z| > 5$ is considered an outlier worth inspection. RMSZ is the root-mean-square of all Z scores of the bond lengths (or angles).

Mol	Chain	Bond lengths		Bond angles	
		RMSZ	# Z >5	RMSZ	# Z >5
1	A	0.56	1/8454 (0.0%)	0.79	10/11432 (0.1%)
2	B	0.37	0/347	0.73	0/533
All	All	0.56	1/8801 (0.0%)	0.79	10/11965 (0.1%)

Chiral center outliers are detected by calculating the chiral volume of a chiral center and verifying if the center is modelled as a planar moiety or with the opposite hand. A planarity outlier is detected by checking planarity of atoms in a peptide group, atoms in a mainchain group or atoms of a sidechain that are expected to be planar.

Mol	Chain	#Chirality outliers	#Planarity outliers
1	A	0	1

All (1) bond length outliers are listed below:

Mol	Chain	Res	Type	Atoms	Z	Observed(Å)	Ideal(Å)
1	A	808	GLU	CD-OE1	5.93	1.32	1.25

All (10) bond angle outliers are listed below:

Mol	Chain	Res	Type	Atoms	Z	Observed(°)	Ideal(°)
1	A	813	ARG	NE-CZ-NH2	-10.60	115.00	120.30
1	A	813	ARG	NE-CZ-NH1	7.20	123.90	120.30
1	A	189	ARG	NE-CZ-NH2	-6.21	117.20	120.30
1	A	593	ARG	NE-CZ-NH2	6.19	123.39	120.30
1	A	781	ARG	NE-CZ-NH1	6.13	123.37	120.30
1	A	781	ARG	NE-CZ-NH2	-5.63	117.48	120.30
1	A	199	ARG	NE-CZ-NH1	5.57	123.08	120.30
1	A	26	LEU	CA-CB-CG	5.36	127.63	115.30
1	A	4	LEU	CA-CB-CG	5.35	127.60	115.30
1	A	185	LEU	CA-CB-CG	5.21	127.27	115.30

There are no chirality outliers.

All (1) planarity outliers are listed below:

Mol	Chain	Res	Type	Group
1	A	101	GLU	Peptide

5.2 Too-close contacts [i](#)

In the following table, the Non-H and H(model) columns list the number of non-hydrogen atoms and hydrogen atoms in the chain respectively. The H(added) column lists the number of hydrogen atoms added and optimized by MolProbity. The Clashes column lists the number of clashes within the asymmetric unit, whereas Symm-Clashes lists symmetry-related clashes.

Mol	Chain	Non-H	H(model)	H(added)	Clashes	Symm-Clashes
1	A	8302	0	8436	54	0
2	B	309	0	168	8	0
3	A	8	0	0	0	0
4	A	1	0	0	0	0
4	B	1	0	0	0	0
5	A	27	0	12	0	0
6	A	2	0	0	0	0
6	B	2	0	0	0	0
All	All	8652	0	8616	58	0

The all-atom clashscore is defined as the number of clashes found per 1000 atoms (including hydrogen atoms). The all-atom clashscore for this structure is 3.

All (58) close contacts within the same asymmetric unit are listed below, sorted by their clash magnitude.

Atom-1	Atom-2	Interatomic distance (Å)	Clash overlap (Å)
2:B:10:DA:H1'	2:B:11:DG:H5''	1.67	0.76
1:A:745:MET:HG3	2:B:6:DG:H2''	1.71	0.71
1:A:3:PRO:HD2	1:A:6:GLU:OE1	1.95	0.66
1:A:678:TYR:HB2	1:A:768:ILE:HG12	1.80	0.63
1:A:620:VAL:HG13	1:A:665:ILE:HG12	1.83	0.59
1:A:989:ASP:OD1	1:A:991:THR:HG22	2.03	0.59
1:A:74:ASP:HB3	1:A:76:GLU:HG2	1.85	0.59
1:A:153:ALA:HA	1:A:157:MET:HE1	1.86	0.56
1:A:1:MET:SD	1:A:1:MET:N	2.75	0.54
2:B:11:DG:H4'	2:B:12:DA:OP1	2.07	0.54
1:A:85:ASN:HD22	1:A:113:ASP:H	1.55	0.53
1:A:969:ASP:OD1	1:A:969:ASP:N	2.40	0.53

Continued on next page...

Continued from previous page...

Atom-1	Atom-2	Interatomic distance (Å)	Clash overlap (Å)
1:A:998:ASP:OD1	1:A:1000:ARG:HD3	2.09	0.53
1:A:568:ARG:HD3	2:B:5:DT:O4	2.10	0.52
1:A:101:GLU:HB2	1:A:117:TYR:HB2	1.92	0.51
1:A:252:CYS:HB2	1:A:286:HIS:O	2.10	0.51
1:A:677:SER:HB3	1:A:763:ASP:HB3	1.93	0.50
1:A:387:ILE:HB	1:A:419:ILE:HD12	1.94	0.50
1:A:472:GLU:O	1:A:475:GLU:HG2	2.12	0.50
1:A:429:GLU:HA	1:A:432:ARG:HD3	1.95	0.48
1:A:469:PRO:HB2	1:A:471:SER:HB3	1.94	0.48
1:A:644:TYR:HA	1:A:783:PHE:O	2.14	0.47
1:A:970:LYS:HA	1:A:970:LYS:HE2	1.96	0.47
1:A:21:VAL:N	1:A:22:PRO:HD2	2.30	0.47
1:A:53:VAL:HG22	1:A:67:LEU:HD22	1.97	0.47
1:A:374:ALA:HB3	1:A:377:GLU:HG3	1.97	0.47
1:A:594:GLU:OE1	1:A:600:ARG:NH1	2.46	0.47
1:A:104:CYS:HB3	1:A:109:TRP:CG	2.50	0.46
1:A:408:ARG:HA	1:A:412:GLU:HG2	1.97	0.46
1:A:407:SER:HA	1:A:411:GLU:HG2	1.96	0.46
1:A:522:SER:HB3	1:A:529:PHE:HA	1.98	0.45
1:A:126:ILE:HG21	1:A:362:LEU:HD23	1.99	0.45
1:A:921:ILE:HD12	1:A:982:SER:HB2	1.98	0.45
1:A:902:PRO:HG2	1:A:1047:ARG:HH11	1.82	0.45
1:A:667:SER:HB2	1:A:739:ILE:HD11	1.97	0.45
1:A:946:GLN:HG3	1:A:949:ARG:HH12	1.81	0.45
1:A:760:CYS:SG	1:A:776:PRO:HB2	2.57	0.44
1:A:994:GLU:CG	2:B:1:DA:H5''	2.48	0.43
1:A:478:ASN:HB3	1:A:565:ARG:NH1	2.33	0.43
1:A:515:ALA:HA	1:A:536:VAL:HG13	2.00	0.43
1:A:503:ARG:HE	1:A:503:ARG:HB3	1.61	0.43
1:A:353:ARG:NH1	1:A:354:GLU:OE2	2.52	0.43
1:A:202:LEU:HD13	1:A:207:ILE:HD11	2.00	0.43
1:A:556:PRO:HB2	1:A:558:THR:HG22	2.00	0.43
1:A:1:MET:HA	1:A:6:GLU:HG2	2.00	0.42
1:A:369:ARG:NH2	1:A:406:TYR:OH	2.51	0.42
1:A:478:ASN:HB3	1:A:565:ARG:HH12	1.84	0.42
1:A:757:PHE:O	1:A:780:SER:HA	2.18	0.42
1:A:876:ASP:OD1	1:A:878:SER:HB3	2.20	0.42
1:A:943:PRO:HD2	1:A:982:SER:O	2.20	0.42
2:B:11:DG:C4'	2:B:12:DA:OP1	2.67	0.42
1:A:496:GLN:HB3	1:A:547:LEU:HD22	2.00	0.41
2:B:7:DC:H3'	2:B:8:DC:H5''	2.01	0.41

Continued on next page...

Continued from previous page...

Atom-1	Atom-2	Interatomic distance (Å)	Clash overlap (Å)
1:A:85:ASN:ND2	1:A:113:ASP:H	2.18	0.41
1:A:962:MET:SD	1:A:962:MET:N	2.87	0.41
1:A:86:GLY:HA3	1:A:357:LYS:NZ	2.36	0.40
1:A:737:HIS:HA	1:A:738:PRO:HD3	1.87	0.40
1:A:994:GLU:HG3	2:B:1:DA:H5''	2.02	0.40

There are no symmetry-related clashes.

5.3 Torsion angles [i](#)

5.3.1 Protein backbone [i](#)

In the following table, the Percentiles column shows the percent Ramachandran outliers of the chain as a percentile score with respect to all X-ray entries followed by that with respect to entries of similar resolution.

The Analysed column shows the number of residues for which the backbone conformation was analysed, and the total number of residues.

Mol	Chain	Analysed	Favoured	Allowed	Outliers	Percentiles
1	A	1045/1059 (99%)	1004 (96%)	35 (3%)	6 (1%)	25 27

All (6) Ramachandran outliers are listed below:

Mol	Chain	Res	Type
1	A	61	GLY
1	A	22	PRO
1	A	505	ASN
1	A	568	ARG
1	A	2	GLU
1	A	108	PRO

5.3.2 Protein sidechains [i](#)

In the following table, the Percentiles column shows the percent sidechain outliers of the chain as a percentile score with respect to all X-ray entries followed by that with respect to entries of similar resolution.

The Analysed column shows the number of residues for which the sidechain conformation was analysed, and the total number of residues.

Mol	Chain	Analysed	Rotameric	Outliers	Percentiles
1	A	933/938 (100%)	870 (93%)	63 (7%)	16 16

All (63) residues with a non-rotameric sidechain are listed below:

Mol	Chain	Res	Type
1	A	1	MET
1	A	4	LEU
1	A	6	GLU
1	A	7	LEU
1	A	11	LEU
1	A	25	GLU
1	A	39	VAL
1	A	54	GLU
1	A	55	THR
1	A	74	ASP
1	A	75	ARG
1	A	76	GLU
1	A	77	HIS
1	A	133	SER
1	A	144	SER
1	A	150	SER
1	A	172	SER
1	A	183	LEU
1	A	185	LEU
1	A	210	GLU
1	A	244	ASP
1	A	262	ILE
1	A	321	LEU
1	A	355	LEU
1	A	359	ARG
1	A	380	ARG
1	A	390	GLU
1	A	405	LEU
1	A	408	ARG
1	A	410	VAL
1	A	413	GLN
1	A	424	LEU
1	A	426	LYS
1	A	472	GLU
1	A	478	ASN
1	A	486	THR
1	A	505	ASN
1	A	512	ASN

Continued on next page...

Continued from previous page...

Mol	Chain	Res	Type
1	A	522	SER
1	A	526	ARG
1	A	553	SER
1	A	655	LYS
1	A	751	ILE
1	A	781	ARG
1	A	797	VAL
1	A	810	LEU
1	A	816	ARG
1	A	824	LEU
1	A	832	ARG
1	A	859	LEU
1	A	864	LEU
1	A	896	LEU
1	A	901	VAL
1	A	920	LEU
1	A	921	ILE
1	A	962	MET
1	A	963	VAL
1	A	969	ASP
1	A	985	ARG
1	A	996	LEU
1	A	1000	ARG
1	A	1001	ARG
1	A	1047	ARG

Sometimes sidechains can be flipped to improve hydrogen bonding and reduce clashes. All (6) such sidechains are listed below:

Mol	Chain	Res	Type
1	A	58	ASN
1	A	85	ASN
1	A	413	GLN
1	A	500	ASN
1	A	505	ASN
1	A	729	HIS

5.3.3 RNA [i](#)

There are no RNA molecules in this entry.

5.4 Non-standard residues in protein, DNA, RNA chains [i](#)

There are no non-standard protein/DNA/RNA residues in this entry.

5.5 Carbohydrates [i](#)

There are no monosaccharides in this entry.

5.6 Ligand geometry [i](#)

Of 4 ligands modelled in this entry, 2 are monoatomic - leaving 2 for Mogul analysis.

In the following table, the Counts columns list the number of bonds (or angles) for which Mogul statistics could be retrieved, the number of bonds (or angles) that are observed in the model and the number of bonds (or angles) that are defined in the Chemical Component Dictionary. The Link column lists molecule types, if any, to which the group is linked. The Z score for a bond length (or angle) is the number of standard deviations the observed value is removed from the expected value. A bond length (or angle) with $|Z| > 2$ is considered an outlier worth inspection. RMSZ is the root-mean-square of all Z scores of the bond lengths (or angles).

Mol	Type	Chain	Res	Link	Bond lengths			Bond angles		
					Counts	RMSZ	# Z > 2	Counts	RMSZ	# Z > 2
3	SF4	A	1101	1	0,12,12	-	-	-		
5	ADP	A	1103	-	24,29,29	1.07	2 (8%)	29,45,45	1.42	5 (17%)

In the following table, the Chirals column lists the number of chiral outliers, the number of chiral centers analysed, the number of these observed in the model and the number defined in the Chemical Component Dictionary. Similar counts are reported in the Torsion and Rings columns. '-' means no outliers of that kind were identified.

Mol	Type	Chain	Res	Link	Chirals	Torsions	Rings
3	SF4	A	1101	1	-	-	0/6/5/5
5	ADP	A	1103	-	-	4/12/32/32	0/3/3/3

All (2) bond length outliers are listed below:

Mol	Chain	Res	Type	Atoms	Z	Observed(Å)	Ideal(Å)
5	A	1103	ADP	C5-C4	2.91	1.48	1.40
5	A	1103	ADP	C2-N3	2.10	1.35	1.32

All (5) bond angle outliers are listed below:

Mol	Chain	Res	Type	Atoms	Z	Observed(°)	Ideal(°)
5	A	1103	ADP	N3-C2-N1	-3.61	123.03	128.68
5	A	1103	ADP	C3'-C2'-C1'	2.87	105.30	100.98
5	A	1103	ADP	C2'-C3'-C4'	2.26	107.04	102.64
5	A	1103	ADP	C4-C5-N7	-2.21	107.10	109.40
5	A	1103	ADP	PA-O3A-PB	-2.01	125.92	132.83

There are no chirality outliers.

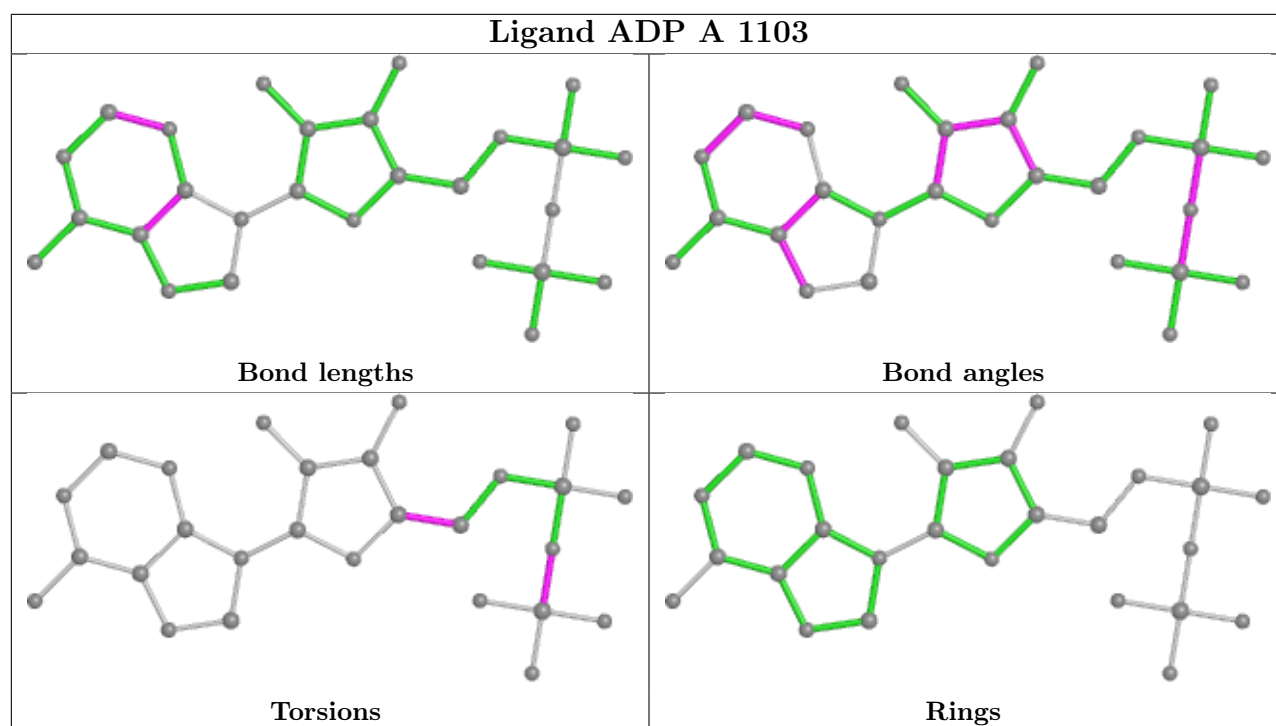
All (4) torsion outliers are listed below:

Mol	Chain	Res	Type	Atoms
5	A	1103	ADP	O4'-C4'-C5'-O5'
5	A	1103	ADP	C3'-C4'-C5'-O5'
5	A	1103	ADP	PA-O3A-PB-O3B
5	A	1103	ADP	PA-O3A-PB-O2B

There are no ring outliers.

No monomer is involved in short contacts.

The following is a two-dimensional graphical depiction of Mogul quality analysis of bond lengths, bond angles, torsion angles, and ring geometry for all instances of the Ligand of Interest. In addition, ligands with molecular weight > 250 and outliers as shown on the validation Tables will also be included. For torsion angles, if less than 5% of the Mogul distribution of torsion angles is within 10 degrees of the torsion angle in question, then that torsion angle is considered an outlier. Any bond that is central to one or more torsion angles identified as an outlier by Mogul will be highlighted in the graph. For rings, the root-mean-square deviation (RMSD) between the ring in question and similar rings identified by Mogul is calculated over all ring torsion angles. If the average RMSD is greater than 60 degrees and the minimal RMSD between the ring in question and any Mogul-identified rings is also greater than 60 degrees, then that ring is considered an outlier. The outliers are highlighted in purple. The color gray indicates Mogul did not find sufficient equivalents in the CSD to analyse the geometry.



5.7 Other polymers [i](#)

There are no such residues in this entry.

5.8 Polymer linkage issues [i](#)

There are no chain breaks in this entry.

6 Fit of model and data

6.1 Protein, DNA and RNA chains

In the following table, the column labelled ‘#RSRZ > 2’ contains the number (and percentage) of RSRZ outliers, followed by percent RSRZ outliers for the chain as percentile scores relative to all X-ray entries and entries of similar resolution. The OWAB column contains the minimum, median, 95th percentile and maximum values of the occupancy-weighted average B-factor per residue. The column labelled ‘Q < 0.9’ lists the number of (and percentage) of residues with an average occupancy less than 0.9.

Mol	Chain	Analysed	<RSRZ>	#RSRZ>2	OWAB(Å ²)	Q<0.9
1	A	1051/1059 (99%)	0.25	61 (5%) 23 33	27, 57, 122, 160	0
2	B	15/15 (100%)	0.90	1 (6%) 17 26	63, 96, 150, 158	0
All	All	1066/1074 (99%)	0.26	62 (5%) 23 33	27, 57, 123, 160	0

All (62) RSRZ outliers are listed below:

Mol	Chain	Res	Type	RSRZ
1	A	415	ASP	7.9
1	A	414	GLY	6.1
1	A	21	VAL	5.9
1	A	26	LEU	5.8
1	A	22	PRO	5.5
1	A	58	ASN	5.2
1	A	-2	GLY	4.6
1	A	879	ASP	4.4
1	A	540	ASN	4.2
1	A	60	ARG	4.0
1	A	543	ALA	3.9
1	A	541	LYS	3.9
1	A	24	VAL	3.9
1	A	0	HIS	3.9
1	A	20	ALA	3.8
1	A	374	ALA	3.7
1	A	1	MET	3.7
1	A	544	VAL	3.6
1	A	909	ASN	3.6
1	A	493	CYS	3.5
1	A	539	MET	3.5
1	A	27	LEU	3.4
1	A	547	LEU	3.4
1	A	82	ILE	3.4

Continued on next page...

Continued from previous page...

Mol	Chain	Res	Type	RSRZ
1	A	59	GLU	3.2
1	A	492	VAL	3.2
1	A	62	ALA	3.1
1	A	989	ASP	3.1
1	A	475	GLU	3.1
1	A	375	PRO	3.0
1	A	416	ASP	3.0
1	A	881	PRO	2.9
1	A	413	GLN	2.9
1	A	509	PRO	2.9
1	A	506	GLY	2.9
1	A	63	GLU	2.9
1	A	480	VAL	2.8
1	A	61	GLY	2.8
1	A	57	GLN	2.8
1	A	504	LYS	2.7
1	A	569	HIS	2.6
1	A	23	ARG	2.6
1	A	115	PHE	2.6
1	A	483	LEU	2.6
1	A	494	ASP	2.5
1	A	417	ALA	2.5
1	A	418	SER	2.4
1	A	542	ALA	2.4
1	A	507	PRO	2.4
2	B	15	DA	2.4
1	A	396	TYR	2.4
1	A	75	ARG	2.4
1	A	11	LEU	2.3
1	A	498	LEU	2.2
1	A	960	VAL	2.2
1	A	1052	LEU	2.2
1	A	877	TYR	2.2
1	A	424	LEU	2.1
1	A	495	GLY	2.1
1	A	73	GLN	2.1
1	A	74	ASP	2.1
1	A	152	PRO	2.0

6.2 Non-standard residues in protein, DNA, RNA chains

There are no non-standard protein/DNA/RNA residues in this entry.

6.3 Carbohydrates [i](#)

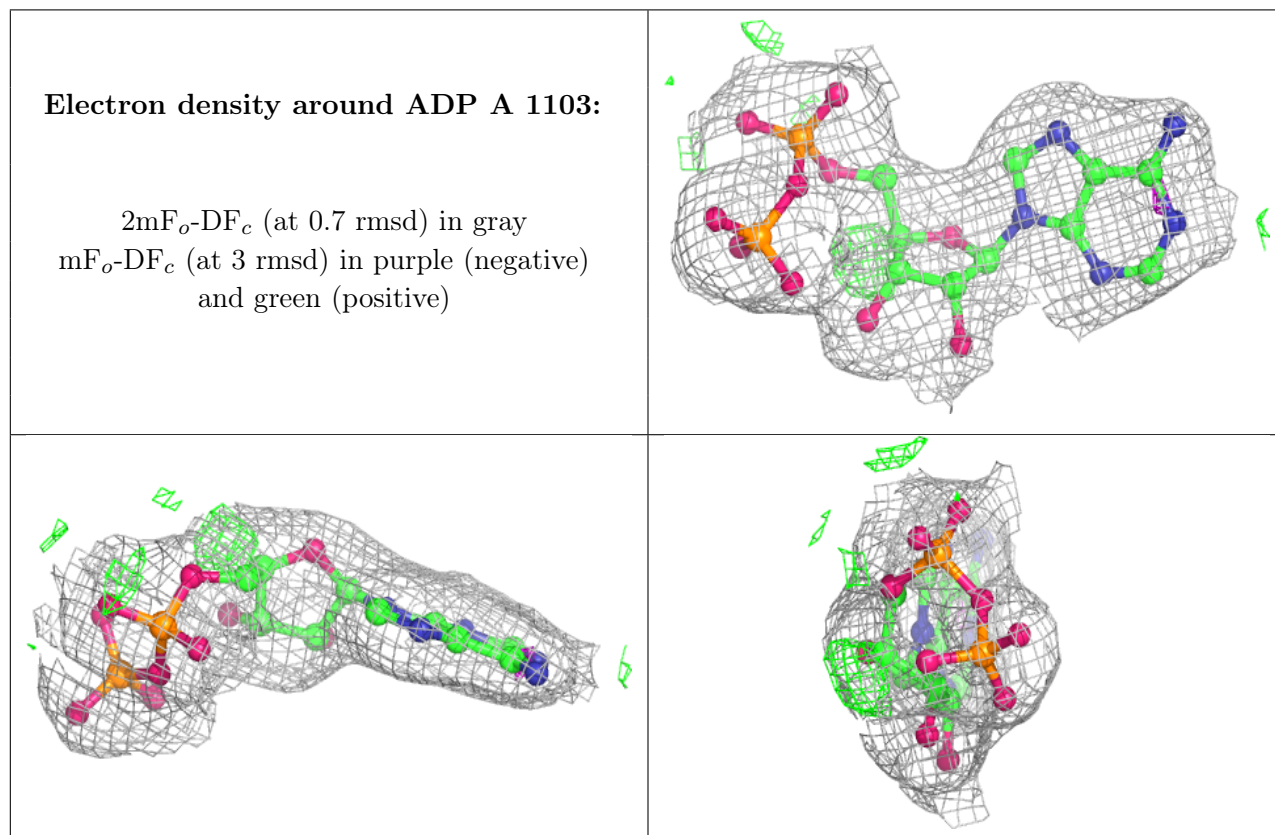
There are no monosaccharides in this entry.

6.4 Ligands [i](#)

In the following table, the Atoms column lists the number of modelled atoms in the group and the number defined in the chemical component dictionary. The B-factors column lists the minimum, median, 95th percentile and maximum values of B factors of atoms in the group. The column labelled 'Q< 0.9' lists the number of atoms with occupancy less than 0.9.

Mol	Type	Chain	Res	Atoms	RSCC	RSR	B-factors(\AA^2)	Q<0.9
5	ADP	A	1103	27/27	0.94	0.12	51,60,85,87	0
3	SF4	A	1101	8/8	0.97	0.07	55,60,62,67	0
4	CA	B	101	1/1	0.98	0.08	76,76,76,76	0
4	CA	A	1102	1/1	0.98	0.07	43,43,43,43	0

The following is a graphical depiction of the model fit to experimental electron density of all instances of the Ligand of Interest. In addition, ligands with molecular weight > 250 and outliers as shown on the geometry validation Tables will also be included. Each fit is shown from different orientation to approximate a three-dimensional view.



6.5 Other polymers [i](#)

There are no such residues in this entry.