



# Full wwPDB X-ray Structure Validation Report ⓘ

Jun 15, 2020 – 09:29 am BST

PDB ID : 5ADB  
Title : Structure of rat neuronal nitric oxide synthase heme domain in complex with  
7-((4-Chloro-3-((methylamino)methyl)phenoxy)methyl) quinolin-2-amine  
Authors : Li, H.; Poulos, T.L.  
Deposited on : 2015-08-20  
Resolution : 2.05 Å(reported)

This is a Full wwPDB X-ray Structure Validation Report for a publicly released PDB entry.

We welcome your comments at [validation@mail.wwpdb.org](mailto:validation@mail.wwpdb.org)

A user guide is available at

<https://www.wwpdb.org/validation/2017/XrayValidationReportHelp>

with specific help available everywhere you see the ⓘ symbol.

---

The following versions of software and data (see [references ⓘ](#)) were used in the production of this report:

MolProbity : 4.02b-467  
Mogul : 1.8.5 (274361), CSD as541be (2020)  
Xtriage (Phenix) : 1.13  
EDS : 2.11  
buster-report : 1.1.7 (2018)  
Percentile statistics : 20191225.v01 (using entries in the PDB archive December 25th 2019)  
Refmac : 5.8.0158  
CCP4 : 7.0.044 (Gargrove)  
Ideal geometry (proteins) : Engh & Huber (2001)  
Ideal geometry (DNA, RNA) : Parkinson et al. (1996)  
Validation Pipeline (wwPDB-VP) : 2.11

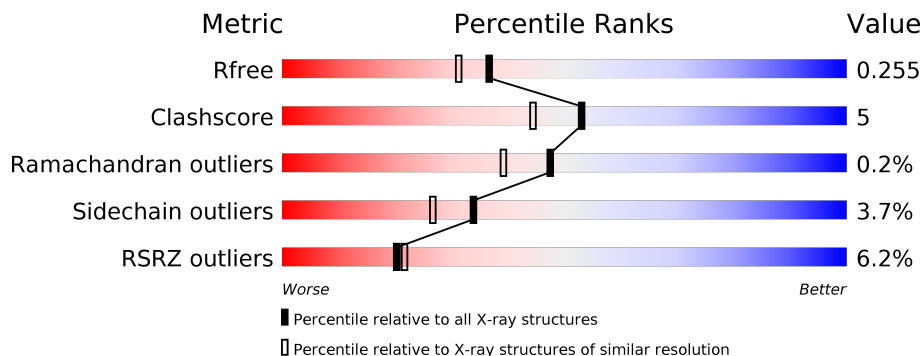
# 1 Overall quality at a glance

The following experimental techniques were used to determine the structure:

*X-RAY DIFFRACTION*

The reported resolution of this entry is 2.05 Å.

Percentile scores (ranging between 0-100) for global validation metrics of the entry are shown in the following graphic. The table shows the number of entries on which the scores are based.



Metric	Whole archive (#Entries)	Similar resolution (#Entries, resolution range(Å))
$R_{free}$	130704	1692 (2.04-2.04)
Clashscore	141614	1773 (2.04-2.04)
Ramachandran outliers	138981	1752 (2.04-2.04)
Sidechain outliers	138945	1752 (2.04-2.04)
RSRZ outliers	127900	1672 (2.04-2.04)

The table below summarises the geometric issues observed across the polymeric chains and their fit to the electron density. The red, orange, yellow and green segments on the lower bar indicate the fraction of residues that contain outliers for  $\geq 3$ , 2, 1 and 0 types of geometric quality criteria respectively. A grey segment represents the fraction of residues that are not modelled. The numeric value for each fraction is indicated below the corresponding segment, with a dot representing fractions  $\leq 5\%$ . The upper red bar (where present) indicates the fraction of residues that have poor fit to the electron density. The numeric value is given above the bar.

Mol	Chain	Length	Quality of chain
1	A	422	
1	B	422	

## 2 Entry composition [i](#)

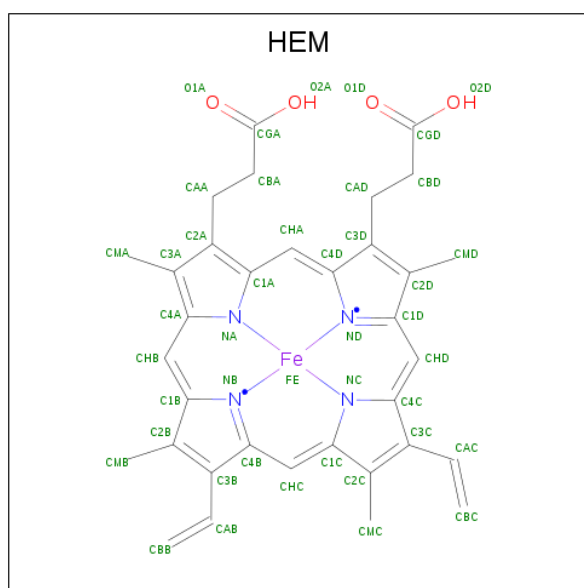
There are 7 unique types of molecules in this entry. The entry contains 7053 atoms, of which 0 are hydrogens and 0 are deuteriums.

In the tables below, the ZeroOcc column contains the number of atoms modelled with zero occupancy, the AltConf column contains the number of residues with at least one atom in alternate conformation and the Trace column contains the number of residues modelled with at most 2 atoms.

- Molecule 1 is a protein called NITRIC OXIDE SYNTHASE, BRAIN.

Mol	Chain	Residues	Atoms					ZeroOcc	AltConf	Trace
			Total	C	N	O	S			
1	A	408	Total 3323	C 2127	N 567	O 607	S 22	0	2	1
1	B	411	Total 3351	C 2144	N 574	O 612	S 21	0	2	0

- Molecule 2 is PROTOPORPHYRIN IX CONTAINING FE (three-letter code: HEM) (formula:  $C_{34}H_{32}FeN_4O_4$ ).



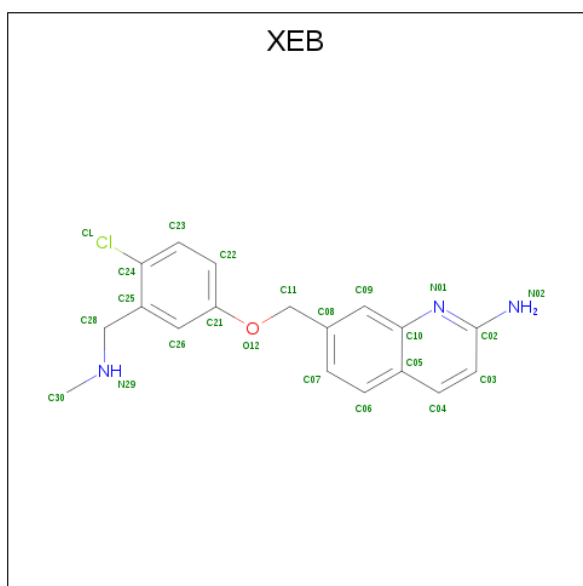
Mol	Chain	Residues	Atoms				ZeroOcc	AltConf	
			Total	C	Fe	N			O
2	A	1	Total 43	C 34	Fe 1	N 4	O 4	0	0
2	B	1	Total 43	C 34	Fe 1	N 4	O 4	0	0

- Molecule 3 is 5,6,7,8-TETRAHYDROBIOPTERIN (three-letter code: H4B) (formula:  $C_9H_{15}N_5O_3$ ).



Mol	Chain	Residues	Atoms				ZeroOcc	AltConf
			Total	C	N	O		
3	A	1	17	9	5	3	0	0
3	B	1	17	9	5	3	0	0

- Molecule 4 is 7-[[4-chloranyl-3-(methylaminomethyl)phenoxy]methyl]quinolin-2-amine (three-letter code: XEB) (formula: C<sub>18</sub>H<sub>18</sub>ClN<sub>3</sub>O).



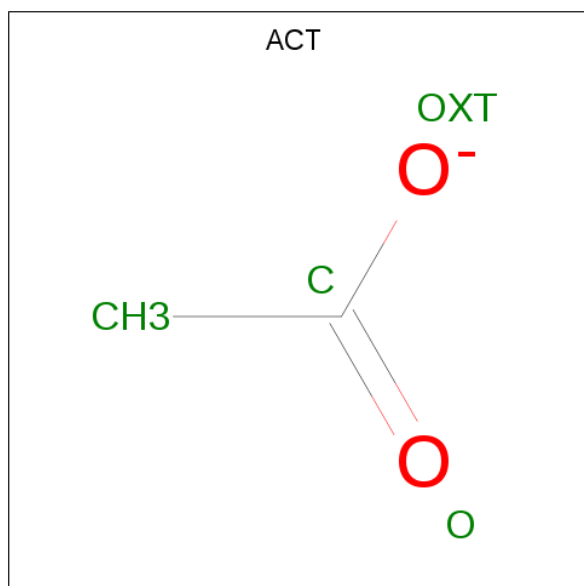
Mol	Chain	Residues	Atoms					ZeroOcc	AltConf
			Total	C	Cl	N	O		
4	A	1	23	18	1	3	1	0	0

*Continued on next page...*

Continued from previous page...

Mol	Chain	Residues	Atoms				ZeroOcc	AltConf	
			Total	C	Cl	N			O
4	B	1	23	18	1	3	1	0	0

- Molecule 5 is ACETATE ION (three-letter code: ACT) (formula: C<sub>2</sub>H<sub>3</sub>O<sub>2</sub>).



Mol	Chain	Residues	Atoms		ZeroOcc	AltConf
			Total	O		
5	A	1	4	2	0	0
5	B	1	4	2	0	0

- Molecule 6 is ZINC ION (three-letter code: ZN) (formula: Zn).

Mol	Chain	Residues	Atoms	ZeroOcc	AltConf
			Zn		
6	A	1	1	0	0

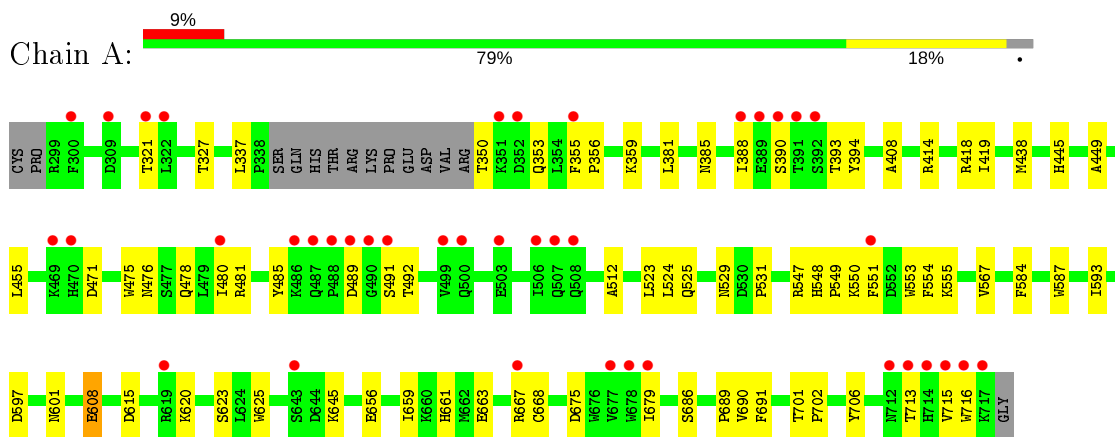
- Molecule 7 is water.

Mol	Chain	Residues	Atoms	ZeroOcc	AltConf
			O		
7	A	100	100	0	0
7	B	104	104	0	0

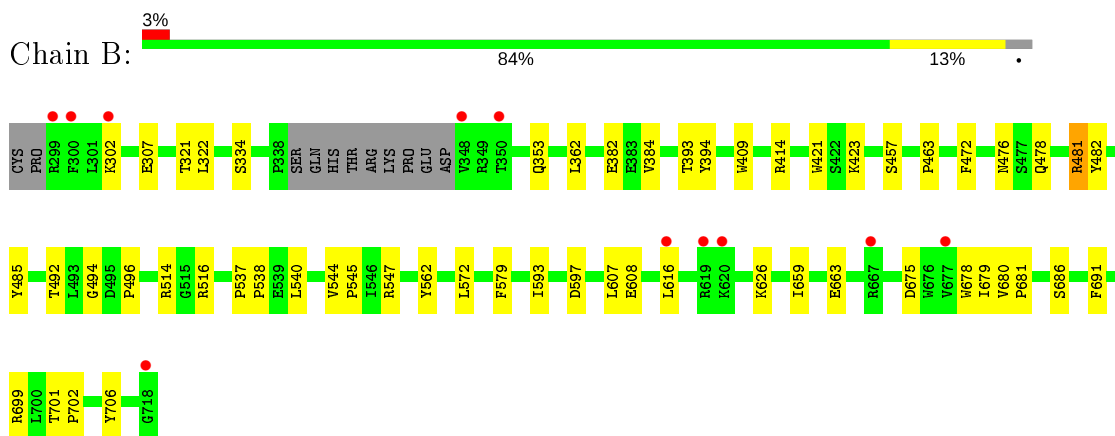
### 3 Residue-property plots [i](#)

These plots are drawn for all protein, RNA and DNA chains in the entry. The first graphic for a chain summarises the proportions of the various outlier classes displayed in the second graphic. The second graphic shows the sequence view annotated by issues in geometry and electron density. Residues are color-coded according to the number of geometric quality criteria for which they contain at least one outlier: green = 0, yellow = 1, orange = 2 and red = 3 or more. A red dot above a residue indicates a poor fit to the electron density ( $RSRZ > 2$ ). Stretches of 2 or more consecutive residues without any outlier are shown as a green connector. Residues present in the sample, but not in the model, are shown in grey.

- Molecule 1: NITRIC OXIDE SYNTHASE, BRAIN



- Molecule 1: NITRIC OXIDE SYNTHASE, BRAIN



## 4 Data and refinement statistics

Property	Value	Source
Space group	P 21 21 21	Depositor
Cell constants a, b, c, $\alpha$ , $\beta$ , $\gamma$	51.65Å 111.01Å 165.11Å 90.00° 90.00° 90.00°	Depositor
Resolution (Å)	39.08 – 2.05 39.08 – 2.05	Depositor EDS
% Data completeness (in resolution range)	73.3 (39.08-2.05) 73.3 (39.08-2.05)	Depositor EDS
$R_{merge}$	0.13	Depositor
$R_{sym}$	(Not available)	Depositor
$\langle I/\sigma(I) \rangle$ <sup>1</sup>	1.80 (at 2.05Å)	Xtrriage
Refinement program	PHENIX (PHENIX.REFINE)	Depositor
R, $R_{free}$	0.193 , 0.255 0.193 , 0.255	Depositor DCC
$R_{free}$ test set	2184 reflections (4.93%)	wwPDB-VP
Wilson B-factor (Å <sup>2</sup> )	26.9	Xtrriage
Anisotropy	0.056	Xtrriage
Bulk solvent $k_{sol}$ (e/Å <sup>3</sup> ), $B_{sol}$ (Å <sup>2</sup> )	0.37 , 64.7	EDS
L-test for twinning <sup>2</sup>	$\langle  L  \rangle = 0.47$ , $\langle L^2 \rangle = 0.30$	Xtrriage
Estimated twinning fraction	No twinning to report.	Xtrriage
$F_o, F_c$ correlation	0.94	EDS
Total number of atoms	7053	wwPDB-VP
Average B, all atoms (Å <sup>2</sup> )	53.0	wwPDB-VP

Xtrriage's analysis on translational NCS is as follows: *The largest off-origin peak in the Patterson function is 5.36% of the height of the origin peak. No significant pseudotranslation is detected.*

<sup>1</sup>Intensities estimated from amplitudes.

<sup>2</sup>Theoretical values of  $\langle |L| \rangle$ ,  $\langle L^2 \rangle$  for acentric reflections are 0.5, 0.333 respectively for untwinned datasets, and 0.375, 0.2 for perfectly twinned datasets.

## 5 Model quality [i](#)

### 5.1 Standard geometry [i](#)

Bond lengths and bond angles in the following residue types are not validated in this section: HEM, ZN, H4B, XEB, ACT

The Z score for a bond length (or angle) is the number of standard deviations the observed value is removed from the expected value. A bond length (or angle) with  $|Z| > 5$  is considered an outlier worth inspection. RMSZ is the root-mean-square of all Z scores of the bond lengths (or angles).

Mol	Chain	Bond lengths		Bond angles	
		RMSZ	# Z  >5	RMSZ	# Z  >5
1	A	0.40	0/3422	0.56	0/4643
1	B	0.42	0/3450	0.57	0/4677
All	All	0.41	0/6872	0.56	0/9320

There are no bond length outliers.

There are no bond angle outliers.

There are no chirality outliers.

There are no planarity outliers.

### 5.2 Too-close contacts [i](#)

In the following table, the Non-H and H(model) columns list the number of non-hydrogen atoms and hydrogen atoms in the chain respectively. The H(added) column lists the number of hydrogen atoms added and optimized by MolProbity. The Clashes column lists the number of clashes within the asymmetric unit, whereas Symm-Clashes lists symmetry related clashes.

Mol	Chain	Non-H	H(model)	H(added)	Clashes	Symm-Clashes
1	A	3323	0	3232	43	0
1	B	3351	0	3269	27	0
2	A	43	0	30	1	0
2	B	43	0	30	3	0
3	A	17	0	15	0	0
3	B	17	0	15	0	0
4	A	23	0	18	3	0
4	B	23	0	18	4	0
5	A	4	0	3	0	0
5	B	4	0	3	0	0
6	A	1	0	0	0	0

*Continued on next page...*



*Continued from previous page...*

Mol	Chain	Non-H	H(model)	H(added)	Clashes	Symm-Clashes
7	A	100	0	0	3	0
7	B	104	0	0	0	0
All	All	7053	0	6633	73	0

The all-atom clashscore is defined as the number of clashes found per 1000 atoms (including hydrogen atoms). The all-atom clashscore for this structure is 5.

All (73) close contacts within the same asymmetric unit are listed below, sorted by their clash magnitude.

Atom-1	Atom-2	Interatomic distance (Å)	Clash overlap (Å)
2:B:750:HEM:HHC	2:B:750:HEM:HBB2	1.64	0.77
1:A:667:ARG:NH1	1:A:668[A]:CYS:SG	2.61	0.73
2:A:750:HEM:HBB2	2:A:750:HEM:HHC	1.72	0.71
1:A:491:SER:OG	7:A:2056:HOH:O	2.09	0.70
1:A:523:LEU:HD22	1:A:531:PRO:HB2	1.76	0.67
4:B:800:XEB:N29	4:B:800:XEB:CL	2.62	0.65
1:A:551:PHE:HD2	1:A:553:TRP:HE1	1.49	0.59
1:B:607:LEU:HD13	1:B:626:LYS:HG2	1.86	0.58
2:B:750:HEM:O1D	4:B:800:XEB:H26	2.04	0.57
1:A:414:ARG:NH1	1:A:706:TYR:OH	2.37	0.57
1:A:567:VAL:HG21	4:A:800:XEB:C07	2.35	0.56
1:B:478:GLN:HB2	1:B:481:ARG:HG3	1.87	0.56
1:B:593:ILE:HA	1:B:597:ASP:HB2	1.88	0.55
1:A:478:GLN:HB2	1:A:481:ARG:HG3	1.86	0.55
1:B:393:THR:OG1	1:B:394:TYR:N	2.39	0.55
1:A:475:TRP:HB2	1:A:523:LEU:HB3	1.88	0.55
1:B:678:TRP:HH2	4:B:800:XEB:H28A	1.72	0.54
1:A:350:THR:N	1:A:353:GLN:OE1	2.40	0.54
1:B:675:ASP:O	1:B:679:ILE:HG12	2.08	0.54
1:A:393:THR:OG1	1:A:394:TYR:N	2.41	0.52
1:B:463:PRO:HG2	1:B:472:PHE:CZ	2.47	0.49
1:A:455:LEU:HD12	1:A:587:TRP:HB3	1.95	0.49
1:B:409:TRP:CE3	1:B:421:TRP:HA	2.48	0.49
1:A:419:ILE:HG13	1:A:661:HIS:HB2	1.95	0.49
1:A:675:ASP:O	1:A:679:ILE:HG12	2.14	0.47
1:A:525:GLN:HG3	1:A:529:ASN:O	2.15	0.47
1:B:414:ARG:NH1	1:B:706:TYR:OH	2.48	0.47
1:A:355:PHE:CE1	1:A:385:ASN:HB2	2.50	0.47
1:A:620:LYS:HB2	1:A:620:LYS:NZ	2.29	0.47
1:B:659:ILE:O	1:B:663:GLU:HG3	2.14	0.47
1:A:608:GLU:H	1:A:608:GLU:HG2	1.43	0.46

*Continued on next page...*

*Continued from previous page...*

Atom-1	Atom-2	Interatomic distance (Å)	Clash overlap (Å)
1:A:551:PHE:HD2	1:A:553:TRP:NE1	2.12	0.46
1:B:678:TRP:CH2	4:B:800:XEB:H28A	2.50	0.46
1:A:593:ILE:HA	1:A:597:ASP:HB2	1.98	0.45
1:B:302:LYS:HE3	1:B:302:LYS:HB2	1.59	0.45
1:B:482:TYR:CE2	1:B:562:TYR:HD1	2.35	0.45
1:B:680:VAL:HA	1:B:681:PRO:HD3	1.89	0.44
1:B:322:LEU:HD12	1:B:699:ARG:HB3	1.99	0.44
1:A:355:PHE:HD1	1:A:388:ILE:HD12	1.83	0.44
1:A:659:ILE:HG13	1:A:689:PRO:HB2	2.00	0.44
1:B:492:THR:HG21	1:B:496:PRO:HA	2.00	0.43
1:B:485:TYR:CZ	1:B:514:ARG:HA	2.54	0.43
1:A:659:ILE:HD11	1:A:690:VAL:HA	2.01	0.43
1:A:359:LYS:HZ3	1:A:381:LEU:HD21	1.84	0.43
1:A:584:PHE:HE2	4:A:800:XEB:H06	1.84	0.43
1:B:409:TRP:CH2	2:B:750:HEM:HMC3	2.54	0.42
1:A:656:GLU:OE1	7:A:2087:HOH:O	2.21	0.42
1:A:706:TYR:HE1	4:A:800:XEB:H23	1.84	0.42
1:B:362:LEU:HD11	1:B:384:VAL:HG21	2.02	0.42
1:A:408:ALA:HA	1:A:702:PRO:O	2.19	0.42
1:A:548:HIS:ND1	1:A:551:PHE:HD1	2.17	0.42
1:A:449:ALA:O	1:A:455:LEU:HA	2.20	0.42
1:A:601:ASN:HB2	1:B:307:GLU:OE2	2.20	0.42
1:A:686:SER:HA	1:A:691:PHE:CG	2.55	0.42
1:A:359:LYS:NZ	1:A:381:LEU:HD21	2.35	0.42
1:A:438:MET:HB3	1:A:524:LEU:HD13	2.02	0.42
1:A:485:TYR:CE2	1:A:512:ALA:HB1	2.55	0.41
1:A:355:PHE:N	1:A:356:PRO:HD2	2.36	0.41
1:A:548:HIS:CG	1:A:549:PRO:HD2	2.55	0.41
1:A:471:ASP:N	1:A:471:ASP:OD1	2.52	0.41
1:A:480:ILE:HA	7:A:2054:HOH:O	2.21	0.41
1:B:544:VAL:HA	1:B:545:PRO:HD3	1.93	0.41
1:B:572:LEU:HB3	1:B:579:PHE:HB2	2.02	0.41
1:B:686:SER:HA	1:B:691:PHE:CG	2.56	0.41
1:A:445:HIS:C	1:A:445:HIS:CD2	2.95	0.40
1:B:616:LEU:HA	1:B:616:LEU:HD23	1.88	0.40
1:A:491:SER:OG	1:A:492:THR:N	2.52	0.40
1:B:701:THR:HA	1:B:702:PRO:C	2.41	0.40
1:A:523:LEU:HD23	1:A:523:LEU:HA	1.76	0.40
1:B:537:PRO:HA	1:B:538:PRO:HD3	1.77	0.40
1:A:548:HIS:HB2	1:A:554:PHE:CG	2.57	0.40
1:A:623:SER:OG	1:A:625:TRP:HD1	2.03	0.40

*Continued on next page...*

Continued from previous page...

Atom-1	Atom-2	Interatomic distance (Å)	Clash overlap (Å)
1:B:494:GLY:HA2	1:B:516:ARG:HG3	2.04	0.40

There are no symmetry-related clashes.

## 5.3 Torsion angles [i](#)

### 5.3.1 Protein backbone [i](#)

In the following table, the Percentiles column shows the percent Ramachandran outliers of the chain as a percentile score with respect to all X-ray entries followed by that with respect to entries of similar resolution.

The Analysed column shows the number of residues for which the backbone conformation was analysed, and the total number of residues.

Mol	Chain	Analysed	Favoured	Allowed	Outliers	Percentiles
1	A	406/422 (96%)	389 (96%)	15 (4%)	2 (0%)	29 18
1	B	409/422 (97%)	393 (96%)	16 (4%)	0	100 100
All	All	815/844 (97%)	782 (96%)	31 (4%)	2 (0%)	47 39

All (2) Ramachandran outliers are listed below:

Mol	Chain	Res	Type
1	A	418	ARG
1	A	716	TRP

### 5.3.2 Protein sidechains [i](#)

In the following table, the Percentiles column shows the percent sidechain outliers of the chain as a percentile score with respect to all X-ray entries followed by that with respect to entries of similar resolution.

The Analysed column shows the number of residues for which the sidechain conformation was analysed, and the total number of residues.

Mol	Chain	Analysed	Rotameric	Outliers	Percentiles
1	A	365/377 (97%)	349 (96%)	16 (4%)	28 21
1	B	368/377 (98%)	357 (97%)	11 (3%)	41 34
All	All	733/754 (97%)	706 (96%)	27 (4%)	34 27

All (27) residues with a non-rotameric sidechain are listed below:

Mol	Chain	Res	Type
1	A	321	THR
1	A	327	THR
1	A	337	LEU
1	A	390	SER
1	A	476	ASN
1	A	489	ASP
1	A	547	ARG
1	A	550	LYS
1	A	555	LYS
1	A	608	GLU
1	A	615	ASP
1	A	645	LYS
1	A	663	GLU
1	A	701	THR
1	A	713	THR
1	A	715	VAL
1	B	321	THR
1	B	334	SER
1	B	353	GLN
1	B	382	GLU
1	B	423	LYS
1	B	457	SER
1	B	476	ASN
1	B	481	ARG
1	B	540	LEU
1	B	547	ARG
1	B	608	GLU

Some sidechains can be flipped to improve hydrogen bonding and reduce clashes. All (1) such sidechains are listed below:

Mol	Chain	Res	Type
1	A	364	GLN

### 5.3.3 RNA [i](#)

There are no RNA molecules in this entry.

## 5.4 Non-standard residues in protein, DNA, RNA chains [i](#)

There are no non-standard protein/DNA/RNA residues in this entry.

## 5.5 Carbohydrates [i](#)

There are no carbohydrates in this entry.

## 5.6 Ligand geometry [i](#)

Of 9 ligands modelled in this entry, 1 is monoatomic - leaving 8 for Mogul analysis.

In the following table, the Counts columns list the number of bonds (or angles) for which Mogul statistics could be retrieved, the number of bonds (or angles) that are observed in the model and the number of bonds (or angles) that are defined in the Chemical Component Dictionary. The Link column lists molecule types, if any, to which the group is linked. The Z score for a bond length (or angle) is the number of standard deviations the observed value is removed from the expected value. A bond length (or angle) with  $|Z| > 2$  is considered an outlier worth inspection. RMSZ is the root-mean-square of all Z scores of the bond lengths (or angles).

Mol	Type	Chain	Res	Link	Bond lengths			Bond angles		
					Counts	RMSZ	# Z  > 2	Counts	RMSZ	# Z  > 2
5	ACT	B	860	-	1,3,3	1.57	0	0,3,3	0.00	-
4	XEB	A	800	-	25,25,25	1.04	1 (4%)	32,34,34	0.82	0
3	H4B	B	760	-	16,18,18	0.91	0	11,26,26	2.50	5 (45%)
5	ACT	A	860	-	1,3,3	1.33	0	0,3,3	0.00	-
3	H4B	A	760	-	16,18,18	0.93	0	11,26,26	2.71	6 (54%)
2	HEM	A	750	1	27,50,50	2.12	5 (18%)	17,82,82	2.26	5 (29%)
2	HEM	B	750	1	27,50,50	2.16	5 (18%)	17,82,82	1.72	3 (17%)
4	XEB	B	800	-	25,25,25	1.04	1 (4%)	32,34,34	1.19	4 (12%)

In the following table, the Chirals column lists the number of chiral outliers, the number of chiral centers analysed, the number of these observed in the model and the number defined in the Chemical Component Dictionary. Similar counts are reported in the Torsion and Rings columns. '-' means no outliers of that kind were identified.

Mol	Type	Chain	Res	Link	Chirals	Torsions	Rings
4	XEB	A	800	-	-	0/7/8/8	0/3/3/3
3	H4B	B	760	-	-	0/8/17/17	0/2/2/2
3	H4B	A	760	-	-	0/8/17/17	0/2/2/2
2	HEM	A	750	1	-	2/6/54/54	-
2	HEM	B	750	1	-	0/6/54/54	-
4	XEB	B	800	-	-	4/7/8/8	0/3/3/3

All (12) bond length outliers are listed below:

Mol	Chain	Res	Type	Atoms	Z	Observed(Å)	Ideal(Å)
2	A	750	HEM	C3D-C2D	5.40	1.53	1.37
2	B	750	HEM	C3D-C2D	5.04	1.52	1.37
2	B	750	HEM	C3C-C2C	-4.72	1.33	1.40
2	A	750	HEM	C3B-C2B	-4.24	1.34	1.40
2	A	750	HEM	C3C-C2C	-3.95	1.34	1.40
2	B	750	HEM	C3B-CAB	3.87	1.55	1.47
2	B	750	HEM	C3C-CAC	3.63	1.55	1.47
2	A	750	HEM	C3B-CAB	3.53	1.55	1.47
2	A	750	HEM	C3C-CAC	3.45	1.54	1.47
2	B	750	HEM	C3B-C2B	-3.30	1.35	1.40
4	A	800	XEB	C24-CL	2.71	1.80	1.73
4	B	800	XEB	C24-CL	2.69	1.80	1.73

All (23) bond angle outliers are listed below:

Mol	Chain	Res	Type	Atoms	Z	Observed(°)	Ideal(°)
3	B	760	H4B	C4-C4A-C8A	5.20	119.19	114.57
3	A	760	H4B	C4-C4A-C8A	5.11	119.11	114.57
2	A	750	HEM	CBA-CAA-C2A	-4.68	103.85	112.49
2	A	750	HEM	CAD-CBD-CGD	-4.49	105.14	112.67
2	A	750	HEM	C1D-C2D-C3D	-4.16	104.10	107.00
2	B	750	HEM	CAD-CBD-CGD	-3.83	106.24	112.67
3	A	760	H4B	C4-C4A-N5	3.54	122.09	119.12
3	A	760	H4B	N3-C2-N1	-3.46	119.99	125.42
2	B	750	HEM	CBA-CAA-C2A	-3.33	106.34	112.49
3	A	760	H4B	C2-N1-C8A	3.21	121.74	114.54
2	B	750	HEM	C1D-C2D-C3D	-3.10	104.84	107.00
3	B	760	H4B	N3-C2-N1	-3.04	120.65	125.42
3	B	760	H4B	C4-C4A-N5	3.00	121.64	119.12
3	B	760	H4B	C2-N1-C8A	2.76	120.72	114.54
3	B	760	H4B	C4-N3-C2	2.68	120.19	115.93
2	A	750	HEM	C4C-C3C-C2C	2.54	108.67	106.90
3	A	760	H4B	C4-N3-C2	2.45	119.81	115.93
4	B	800	XEB	C03-C02-N01	-2.40	119.19	122.08
3	A	760	H4B	N2-C2-N3	2.33	120.88	117.25
4	B	800	XEB	C11-C08-C09	-2.24	116.33	121.22
2	A	750	HEM	CBD-CAD-C3D	-2.19	108.44	112.48
4	B	800	XEB	O12-C11-C08	2.07	115.38	109.16
4	B	800	XEB	C11-O12-C21	-2.01	112.69	117.65

There are no chirality outliers.

All (6) torsion outliers are listed below:

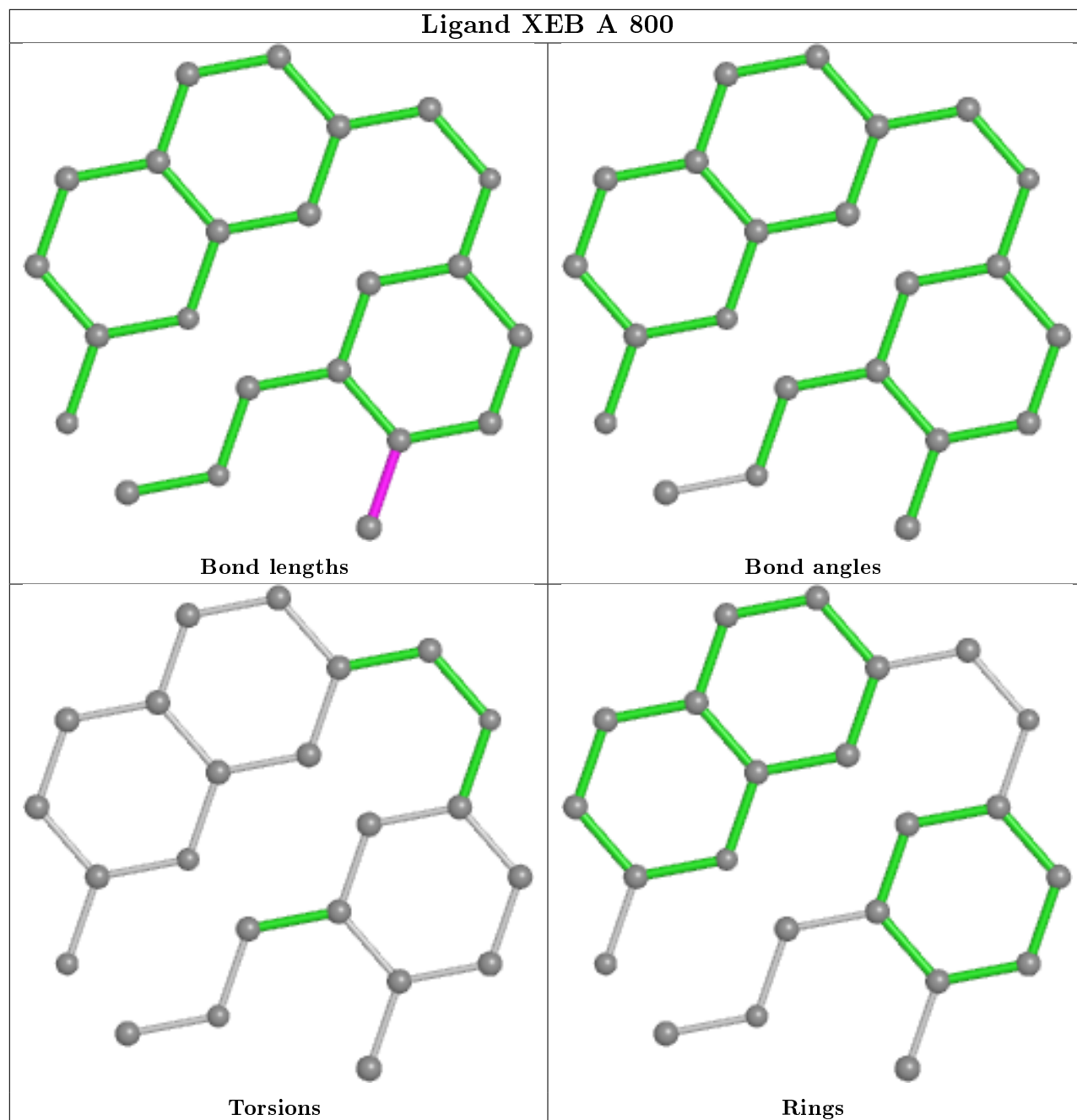
Mol	Chain	Res	Type	Atoms
2	A	750	HEM	C2D-C3D-CAD-CBD
4	B	800	XEB	C24-C25-C28-N29
4	B	800	XEB	C26-C21-O12-C11
4	B	800	XEB	C22-C21-O12-C11
4	B	800	XEB	C26-C25-C28-N29
2	A	750	HEM	C4D-C3D-CAD-CBD

There are no ring outliers.

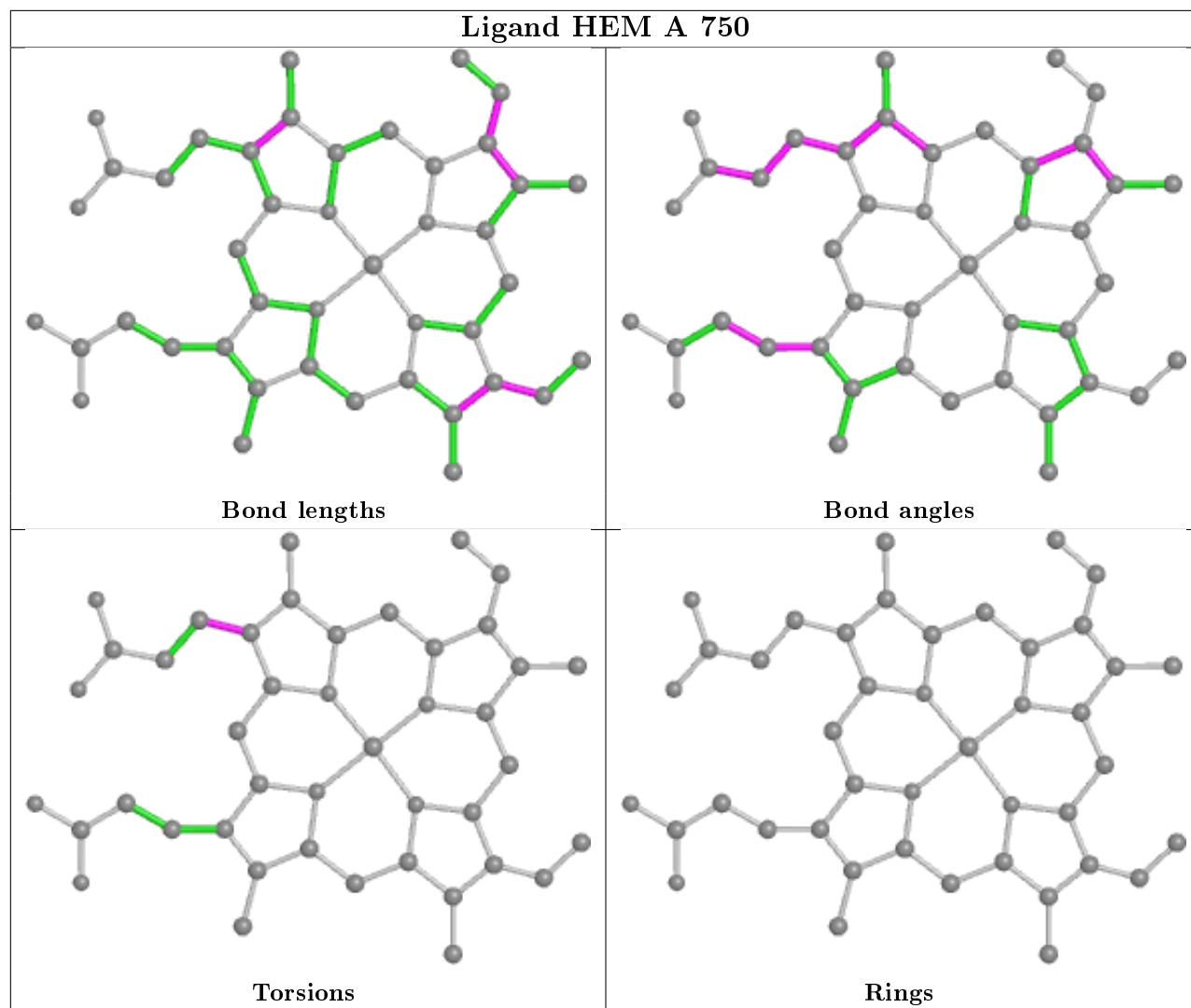
4 monomers are involved in 10 short contacts:

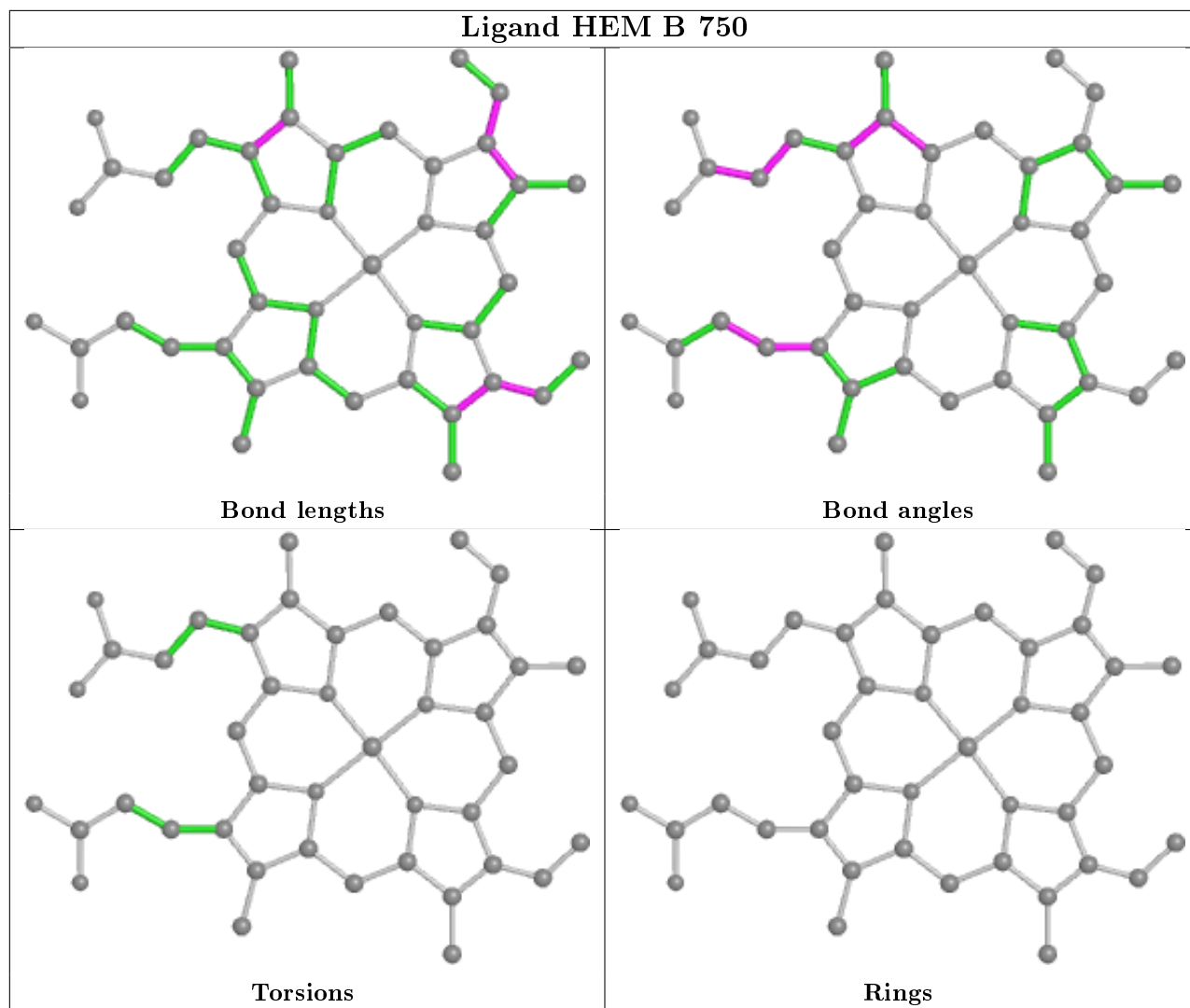
Mol	Chain	Res	Type	Clashes	Symm-Clashes
4	A	800	XEB	3	0
2	A	750	HEM	1	0
2	B	750	HEM	3	0
4	B	800	XEB	4	0

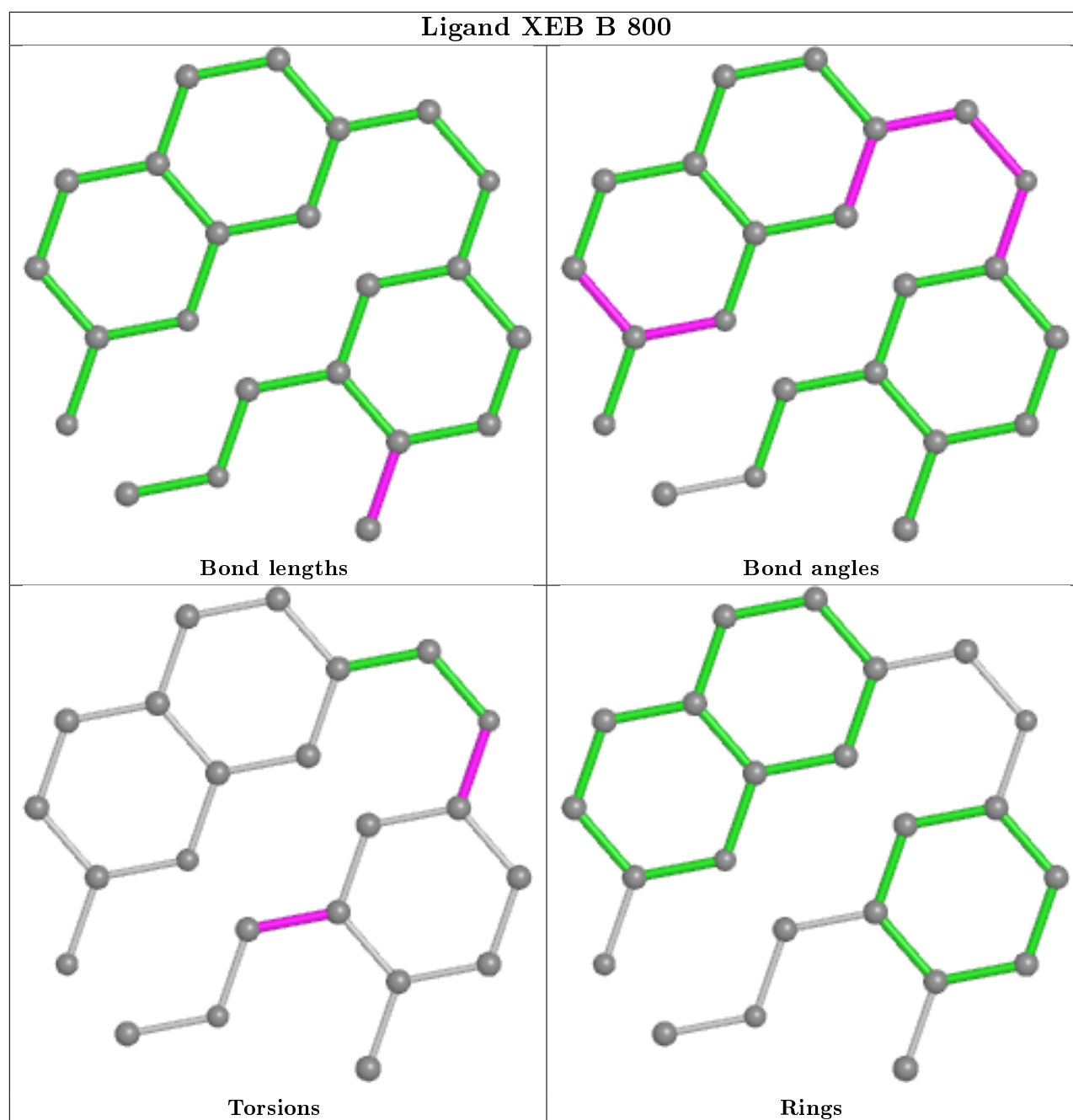
The following is a two-dimensional graphical depiction of Mogul quality analysis of bond lengths, bond angles, torsion angles, and ring geometry for all instances of the Ligand of Interest. In addition, ligands with molecular weight > 250 and outliers as shown on the validation Tables will also be included. For torsion angles, if less than 5% of the Mogul distribution of torsion angles is within 10 degrees of the torsion angle in question, then that torsion angle is considered an outlier. Any bond that is central to one or more torsion angles identified as an outlier by Mogul will be highlighted in the graph. For rings, the root-mean-square deviation (RMSD) between the ring in question and similar rings identified by Mogul is calculated over all ring torsion angles. If the average RMSD is greater than 60 degrees and the minimal RMSD between the ring in question and any Mogul-identified rings is also greater than 60 degrees, then that ring is considered an outlier. The outliers are highlighted in purple. The color gray indicates Mogul did not find sufficient equivalents in the CSD to analyse the geometry.











## 5.7 Other polymers [i](#)

There are no such residues in this entry.

## 5.8 Polymer linkage issues [i](#)

There are no chain breaks in this entry.

## 6 Fit of model and data

### 6.1 Protein, DNA and RNA chains

In the following table, the column labelled ‘#RSRZ> 2’ contains the number (and percentage) of RSRZ outliers, followed by percent RSRZ outliers for the chain as percentile scores relative to all X-ray entries and entries of similar resolution. The OWAB column contains the minimum, median, 95<sup>th</sup> percentile and maximum values of the occupancy-weighted average B-factor per residue. The column labelled ‘Q< 0.9’ lists the number of (and percentage) of residues with an average occupancy less than 0.9.

Mol	Chain	Analysed	<RSRZ>	#RSRZ>2	OWAB(Å <sup>2</sup> )	Q<0.9
1	A	408/422 (96%)	0.43	40 (9%) <b>7</b> <b>8</b>	24, 54, 97, 131	0
1	B	411/422 (97%)	-0.05	11 (2%) 54 59	24, 45, 79, 106	0
All	All	819/844 (97%)	0.19	51 (6%) <b>20</b> <b>22</b>	24, 49, 91, 131	0

All (51) RSRZ outliers are listed below:

Mol	Chain	Res	Type	RSRZ
1	A	717	LYS	7.5
1	A	715	VAL	7.3
1	A	488	PRO	6.2
1	A	716	TRP	6.2
1	A	352	ASP	5.7
1	B	300	PHE	5.2
1	B	348	VAL	4.7
1	A	486	LYS	4.6
1	A	351	LYS	4.5
1	A	713	THR	4.4
1	A	388	ILE	4.2
1	A	390	SER	4.0
1	A	490	GLY	3.9
1	A	507	GLN	3.8
1	A	643	SER	3.6
1	A	712	ASN	3.6
1	A	392	SER	3.5
1	A	300	PHE	3.4
1	A	355	PHE	3.4
1	B	718	GLY	3.4
1	B	619	ARG	3.3
1	A	551	PHE	3.3
1	A	499	VAL	3.3
1	A	489	ASP	3.2

*Continued on next page...*

*Continued from previous page...*

Mol	Chain	Res	Type	RSRZ
1	A	714	HIS	2.9
1	A	389	GLU	2.9
1	A	506	ILE	2.8
1	B	620	LYS	2.8
1	A	619	ARG	2.7
1	B	616	LEU	2.7
1	A	487	GLN	2.7
1	A	503	GLU	2.6
1	B	302	LYS	2.6
1	A	508	GLN	2.6
1	B	350	THR	2.5
1	A	470	HIS	2.5
1	A	678	TRP	2.4
1	A	391	THR	2.4
1	B	299	ARG	2.4
1	A	491	SER	2.3
1	A	469	LYS	2.3
1	A	321	THR	2.2
1	A	309	ASP	2.2
1	A	322	LEU	2.2
1	A	679	ILE	2.2
1	B	677	VAL	2.1
1	A	500	GLN	2.1
1	A	480	ILE	2.1
1	A	667	ARG	2.1
1	A	677	VAL	2.0
1	B	667	ARG	2.0

## 6.2 Non-standard residues in protein, DNA, RNA chains [i](#)

There are no non-standard protein/DNA/RNA residues in this entry.

## 6.3 Carbohydrates [i](#)

There are no carbohydrates in this entry.

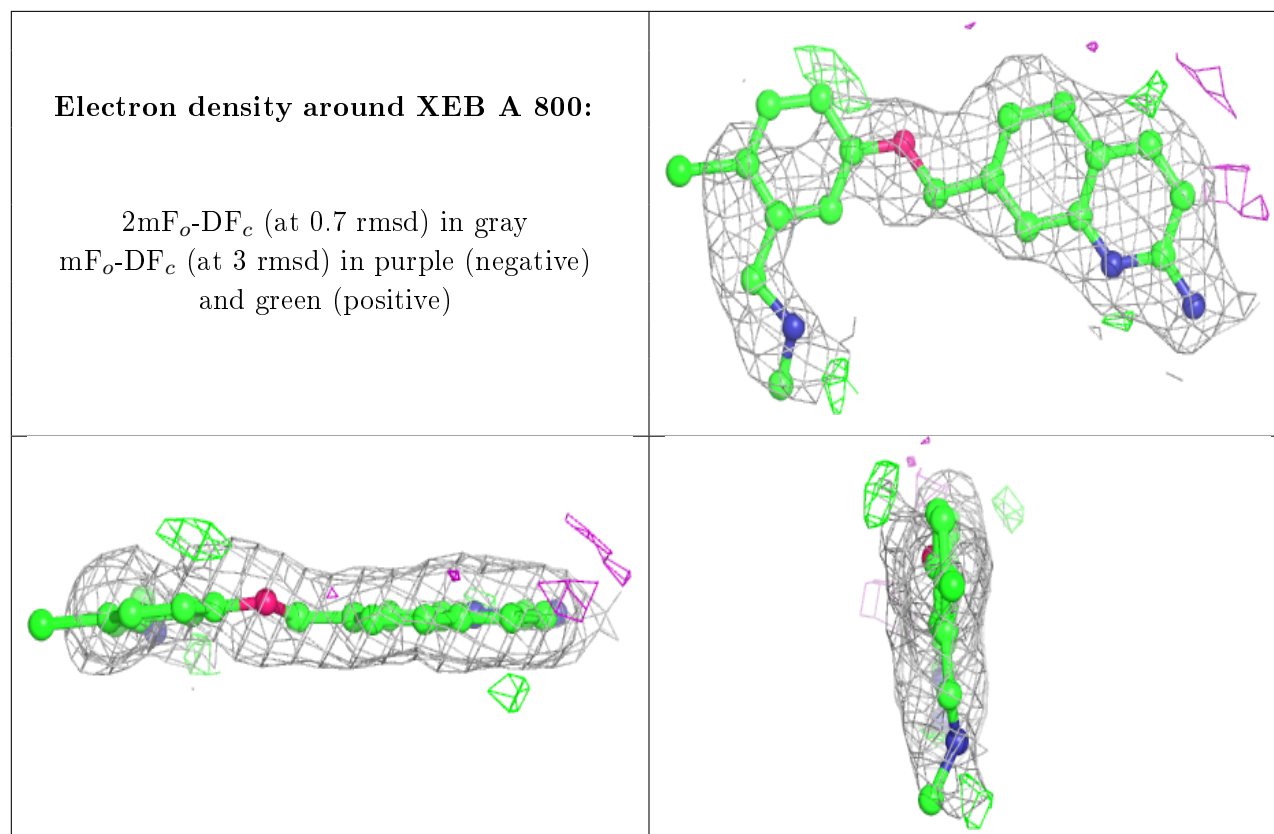
## 6.4 Ligands [i](#)

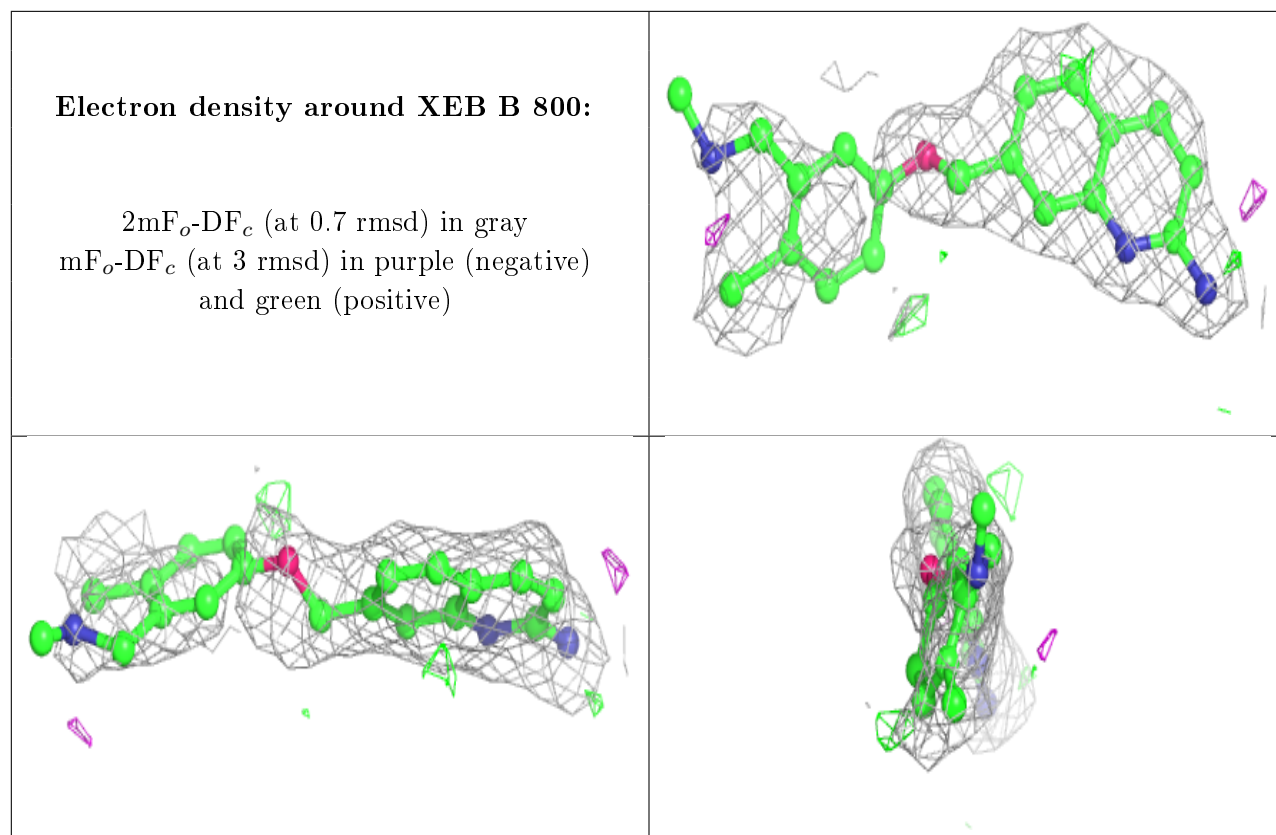
In the following table, the Atoms column lists the number of modelled atoms in the group and the number defined in the chemical component dictionary. The B-factors column lists the minimum,

median, 95<sup>th</sup> percentile and maximum values of B factors of atoms in the group. The column labelled 'Q<0.9' lists the number of atoms with occupancy less than 0.9.

Mol	Type	Chain	Res	Atoms	RSCC	RSR	B-factors(Å <sup>2</sup> )	Q<0.9
4	XEB	A	800	23/23	0.93	0.25	31,45,107,158	0
5	ACT	A	860	4/4	0.93	0.16	60,62,63,65	0
4	XEB	B	800	23/23	0.93	0.22	34,52,112,122	0
3	H4B	A	760	17/17	0.94	0.16	28,43,55,57	0
5	ACT	B	860	4/4	0.94	0.11	47,53,57,60	0
3	H4B	B	760	17/17	0.95	0.16	33,45,56,59	0
2	HEM	B	750	43/43	0.97	0.15	24,35,56,70	0
2	HEM	A	750	43/43	0.97	0.18	30,36,59,68	0
6	ZN	A	1717	1/1	1.00	0.08	47,47,47,47	0

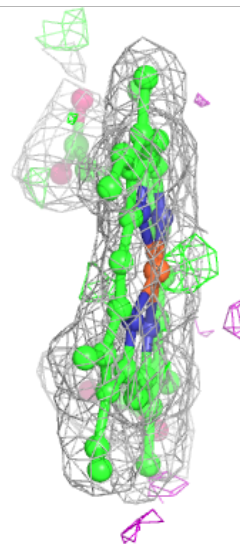
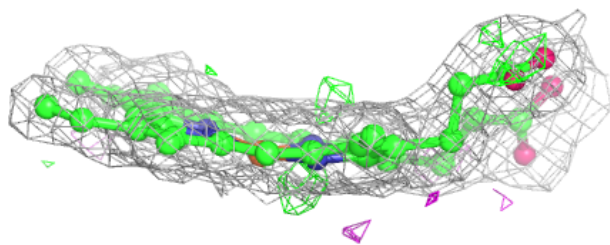
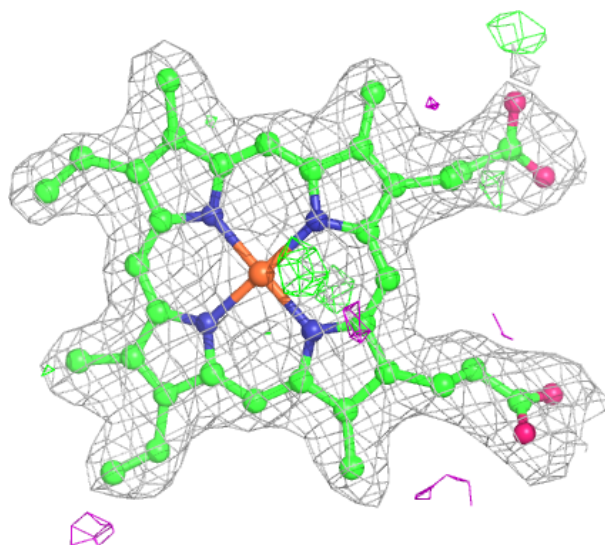
The following is a graphical depiction of the model fit to experimental electron density of all instances of the Ligand of Interest. In addition, ligands with molecular weight > 250 and outliers as shown on the geometry validation Tables will also be included. Each fit is shown from different orientation to approximate a three-dimensional view.



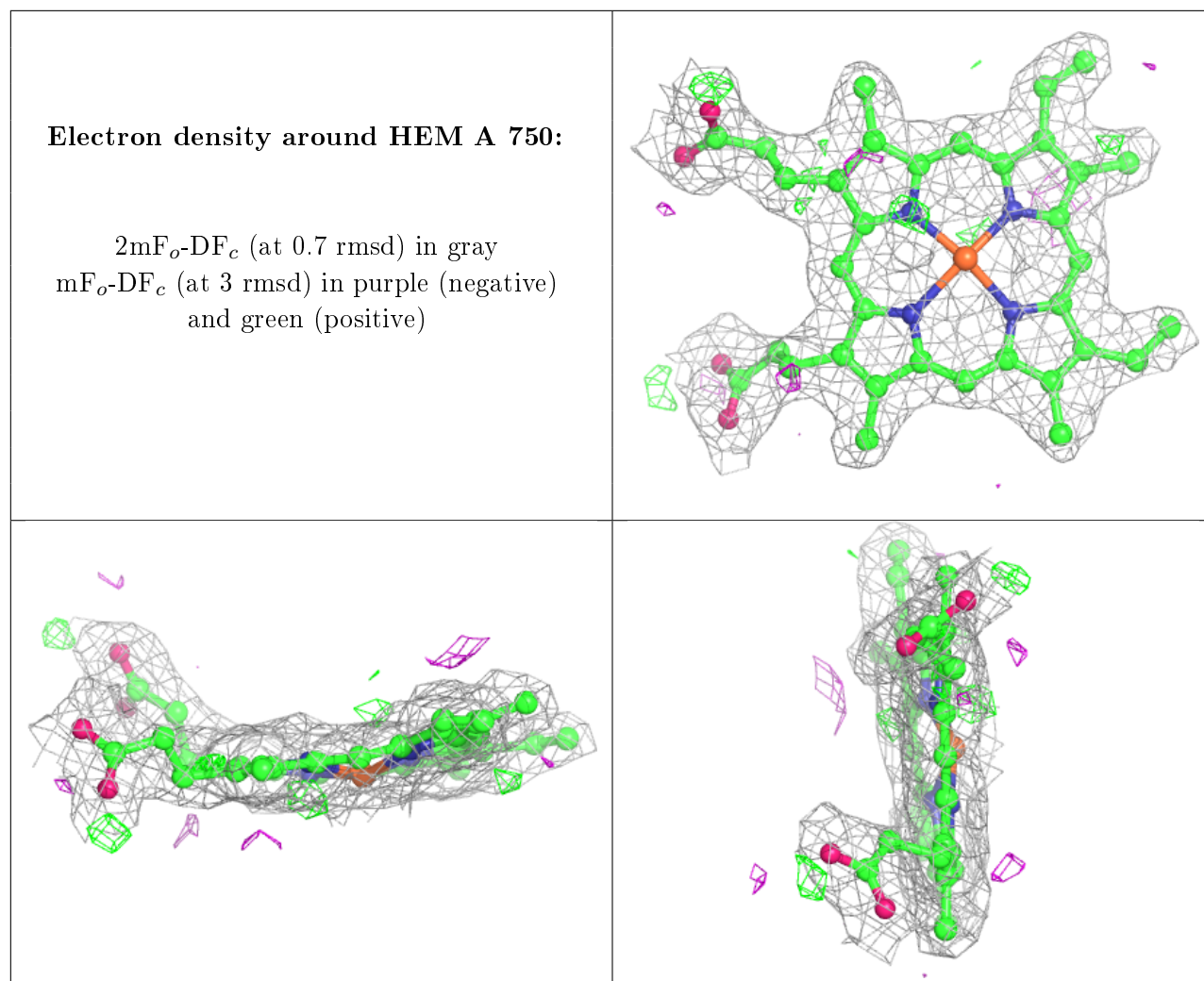


**Electron density around HEM B 750:**

$2mF_o-DF_c$  (at 0.7 rmsd) in gray  
 $mF_o-DF_c$  (at 3 rmsd) in purple (negative)  
and green (positive)







## 6.5 Other polymers [i](#)

There are no such residues in this entry.