



Full wwPDB X-ray Structure Validation Report ⓘ

Aug 9, 2020 – 08:26 AM BST

PDB ID : 4UZJ
Title : STRUCTURE OF THE WNT DEACYLASE NOTUM FROM DROSOPHILA - CRYSTAL FORM I - 2.4A
Authors : Zebisch, M.; Jones, E.Y.
Deposited on : 2014-09-05
Resolution : 2.40 Å(reported)

This is a Full wwPDB X-ray Structure Validation Report for a publicly released PDB entry.

We welcome your comments at validation@mail.wwpdb.org

A user guide is available at

<https://www.wwpdb.org/validation/2017/XrayValidationReportHelp>

with specific help available everywhere you see the ⓘ symbol.

The following versions of software and data (see [references ⓘ](#)) were used in the production of this report:

MolProbity : 4.02b-467
Mogul : 1.8.5 (274361), CSD as541be (2020)
Xtriage (Phenix) : 1.13
EDS : 2.13.1
Percentile statistics : 20191225.v01 (using entries in the PDB archive December 25th 2019)
Refmac : 5.8.0158
CCP4 : 7.0.044 (Gargrove)
Ideal geometry (proteins) : Engh & Huber (2001)
Ideal geometry (DNA, RNA) : Parkinson et al. (1996)
Validation Pipeline (wwPDB-VP) : 2.13.1

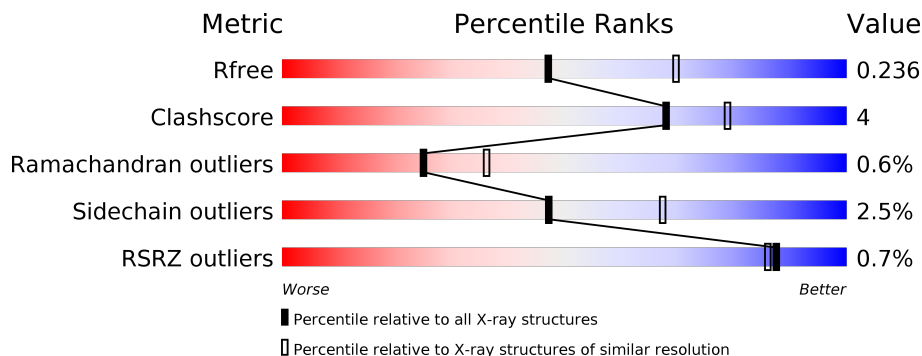
1 Overall quality at a glance

The following experimental techniques were used to determine the structure:

X-RAY DIFFRACTION

The reported resolution of this entry is 2.40 Å.

Percentile scores (ranging between 0-100) for global validation metrics of the entry are shown in the following graphic. The table shows the number of entries on which the scores are based.



Metric	Whole archive (#Entries)	Similar resolution (#Entries, resolution range(Å))
R_{free}	130704	3907 (2.40-2.40)
Clashscore	141614	4398 (2.40-2.40)
Ramachandran outliers	138981	4318 (2.40-2.40)
Sidechain outliers	138945	4319 (2.40-2.40)
RSRZ outliers	127900	3811 (2.40-2.40)

The table below summarises the geometric issues observed across the polymeric chains and their fit to the electron density. The red, orange, yellow and green segments on the lower bar indicate the fraction of residues that contain outliers for ≥ 3 , 2, 1 and 0 types of geometric quality criteria respectively. A grey segment represents the fraction of residues that are not modelled. The numeric value for each fraction is indicated below the corresponding segment, with a dot representing fractions $\leq 5\%$. The upper red bar (where present) indicates the fraction of residues that have poor fit to the electron density. The numeric value is given above the bar.

Mol	Chain	Length	Quality of chain
1	A	372	 81% 10% • 8%
1	B	372	 81% 9% • 9%

2 Entry composition i

There are 3 unique types of molecules in this entry. The entry contains 5497 atoms, of which 0 are hydrogens and 0 are deuteriums.

In the tables below, the ZeroOcc column contains the number of atoms modelled with zero occupancy, the AltConf column contains the number of residues with at least one atom in alternate conformation and the Trace column contains the number of residues modelled with at most 2 atoms.

- Molecule 1 is a protein called NOTUM.

Mol	Chain	Residues	Atoms					ZeroOcc	AltConf	Trace
			Total	C	N	O	S			
1	A	341	2735	1737	497	482	19	0	0	0
1	B	340	2734	1739	496	480	19	0	0	0

There are 44 discrepancies between the modelled and reference sequences:

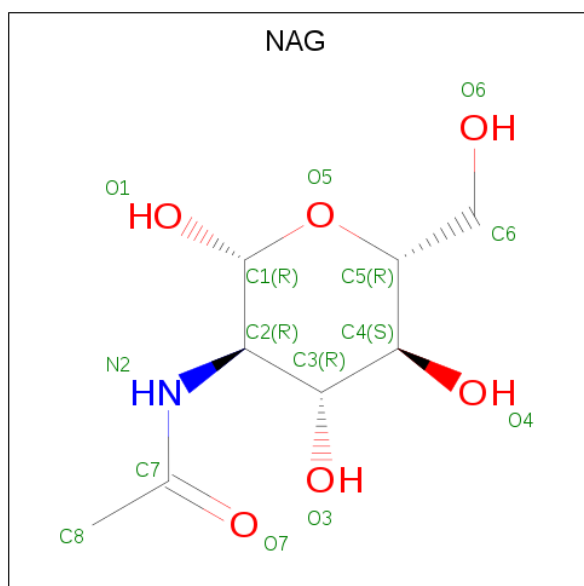
Chain	Residue	Modelled	Actual	Comment	Reference
A	81	GLU	-	expression tag	UNP Q9VUX3
A	82	THR	-	expression tag	UNP Q9VUX3
A	83	GLY	-	expression tag	UNP Q9VUX3
A	84	ASP	-	expression tag	UNP Q9VUX3
A	85	HIS	-	expression tag	UNP Q9VUX3
A	416	GLY	-	linker	UNP Q9VUX3
A	417	ASN	-	linker	UNP Q9VUX3
A	418	ASN	-	linker	UNP Q9VUX3
A	419	ASN	-	linker	UNP Q9VUX3
A	420	GLY	-	linker	UNP Q9VUX3
A	618	GLY	-	expression tag	UNP Q9VUX3
A	619	THR	-	expression tag	UNP Q9VUX3
A	620	HIS	-	expression tag	UNP Q9VUX3
A	621	HIS	-	expression tag	UNP Q9VUX3
A	622	HIS	-	expression tag	UNP Q9VUX3
A	623	HIS	-	expression tag	UNP Q9VUX3
A	624	HIS	-	expression tag	UNP Q9VUX3
A	625	HIS	-	expression tag	UNP Q9VUX3
A	626	HIS	-	expression tag	UNP Q9VUX3
A	627	HIS	-	expression tag	UNP Q9VUX3
A	628	HIS	-	expression tag	UNP Q9VUX3
A	629	HIS	-	expression tag	UNP Q9VUX3
B	81	GLU	-	expression tag	UNP Q9VUX3
B	82	THR	-	expression tag	UNP Q9VUX3
B	83	GLY	-	expression tag	UNP Q9VUX3

Continued on next page...

Continued from previous page...

Chain	Residue	Modelled	Actual	Comment	Reference
B	84	ASP	-	expression tag	UNP Q9VUX3
B	85	HIS	-	expression tag	UNP Q9VUX3
B	416	GLY	-	linker	UNP Q9VUX3
B	417	ASN	-	linker	UNP Q9VUX3
B	418	ASN	-	linker	UNP Q9VUX3
B	419	ASN	-	linker	UNP Q9VUX3
B	420	GLY	-	linker	UNP Q9VUX3
B	618	GLY	-	expression tag	UNP Q9VUX3
B	619	THR	-	expression tag	UNP Q9VUX3
B	620	HIS	-	expression tag	UNP Q9VUX3
B	621	HIS	-	expression tag	UNP Q9VUX3
B	622	HIS	-	expression tag	UNP Q9VUX3
B	623	HIS	-	expression tag	UNP Q9VUX3
B	624	HIS	-	expression tag	UNP Q9VUX3
B	625	HIS	-	expression tag	UNP Q9VUX3
B	626	HIS	-	expression tag	UNP Q9VUX3
B	627	HIS	-	expression tag	UNP Q9VUX3
B	628	HIS	-	expression tag	UNP Q9VUX3
B	629	HIS	-	expression tag	UNP Q9VUX3

- Molecule 2 is 2-acetamido-2-deoxy-beta-D-glucopyranose (three-letter code: NAG) (formula: $C_8H_{15}NO_6$).



Mol	Chain	Residues	Atoms			ZeroOcc	AltConf	
			Total	C	N			O
2	B	1	14	8	1	5	0	0

- Molecule 3 is water.

Mol	Chain	Residues	Atoms	ZeroOcc	AltConf
3	A	8	Total O 8 8	0	0
3	B	6	Total O 6 6	0	0

4 Data and refinement statistics

Property	Value	Source
Space group	P 1 21 1	Depositor
Cell constants a, b, c, α , β , γ	59.39Å 81.39Å 86.94Å 90.00° 105.54° 90.00°	Depositor
Resolution (Å)	83.77 – 2.40 58.38 – 2.40	Depositor EDS
% Data completeness (in resolution range)	98.7 (83.77-2.40) 98.7 (58.38-2.40)	Depositor EDS
R_{merge}	0.05	Depositor
R_{sym}	(Not available)	Depositor
$\langle I/\sigma(I) \rangle$ ¹	1.84 (at 2.40Å)	Xtrriage
Refinement program	REFMAC 5.8.0073	Depositor
R, R_{free}	0.197 , 0.243 0.199 , 0.236	Depositor DCC
R_{free} test set	1030 reflections (3.33%)	wwPDB-VP
Wilson B-factor (Å ²)	55.5	Xtrriage
Anisotropy	0.523	Xtrriage
Bulk solvent k_{sol} (e/Å ³), B_{sol} (Å ²)	0.31 , 42.2	EDS
L-test for twinning ²	$\langle L \rangle = 0.49$, $\langle L^2 \rangle = 0.32$	Xtrriage
Estimated twinning fraction	No twinning to report.	Xtrriage
F_o, F_c correlation	0.96	EDS
Total number of atoms	5497	wwPDB-VP
Average B, all atoms (Å ²)	67.0	wwPDB-VP

Xtrriage's analysis on translational NCS is as follows: *The largest off-origin peak in the Patterson function is 4.19% of the height of the origin peak. No significant pseudotranslation is detected.*

¹Intensities estimated from amplitudes.

²Theoretical values of $\langle |L| \rangle$, $\langle L^2 \rangle$ for acentric reflections are 0.5, 0.333 respectively for untwinned datasets, and 0.375, 0.2 for perfectly twinned datasets.

5 Model quality [i](#)

5.1 Standard geometry [i](#)

Bond lengths and bond angles in the following residue types are not validated in this section: NAG

The Z score for a bond length (or angle) is the number of standard deviations the observed value is removed from the expected value. A bond length (or angle) with $|Z| > 5$ is considered an outlier worth inspection. RMSZ is the root-mean-square of all Z scores of the bond lengths (or angles).

Mol	Chain	Bond lengths		Bond angles	
		RMSZ	# Z >5	RMSZ	# Z >5
1	A	0.63	0/2817	0.80	4/3830 (0.1%)
1	B	0.58	0/2817	0.75	2/3830 (0.1%)
All	All	0.60	0/5634	0.78	6/7660 (0.1%)

There are no bond length outliers.

All (6) bond angle outliers are listed below:

Mol	Chain	Res	Type	Atoms	Z	Observed(°)	Ideal(°)
1	A	265	ARG	NE-CZ-NH2	-9.42	115.59	120.30
1	A	155	ARG	NE-CZ-NH2	-8.43	116.09	120.30
1	A	265	ARG	NE-CZ-NH1	7.97	124.28	120.30
1	B	265	ARG	NE-CZ-NH2	-7.54	116.53	120.30
1	A	155	ARG	NE-CZ-NH1	6.90	123.75	120.30
1	B	265	ARG	NE-CZ-NH1	6.50	123.55	120.30

There are no chirality outliers.

There are no planarity outliers.

5.2 Too-close contacts [i](#)

In the following table, the Non-H and H(model) columns list the number of non-hydrogen atoms and hydrogen atoms in the chain respectively. The H(added) column lists the number of hydrogen atoms added and optimized by MolProbity. The Clashes column lists the number of clashes within the asymmetric unit, whereas Symm-Clashes lists symmetry related clashes.

Mol	Chain	Non-H	H(model)	H(added)	Clashes	Symm-Clashes
1	A	2735	0	2647	20	0
1	B	2734	0	2655	20	0
2	B	14	0	13	2	0

Continued on next page...

Continued from previous page...

Mol	Chain	Non-H	H(model)	H(added)	Clashes	Symm-Clashes
3	A	8	0	0	0	0
3	B	6	0	0	0	0
All	All	5497	0	5315	41	0

The all-atom clashscore is defined as the number of clashes found per 1000 atoms (including hydrogen atoms). The all-atom clashscore for this structure is 4.

All (41) close contacts within the same asymmetric unit are listed below, sorted by their clash magnitude.

Atom-1	Atom-2	Interatomic distance (Å)	Clash overlap (Å)
1:B:370:LEU:O	1:B:601:ARG:NH2	2.28	0.67
1:B:312:GLU:OE2	1:B:315:ARG:NH1	2.29	0.65
1:A:143:ARG:O	1:A:147:THR:HG22	2.04	0.58
1:A:99:THR:HG21	1:A:103:GLY:HA2	1.87	0.56
1:B:265:ARG:HD3	1:B:413:THR:OG1	2.05	0.56
1:B:138:ARG:HG2	1:B:146:MET:HE1	1.89	0.54
1:B:127:TRP:HA	1:B:127:TRP:CE3	2.44	0.52
1:B:322:LEU:HD23	1:B:322:LEU:C	2.30	0.52
1:B:138:ARG:CG	1:B:146:MET:HE1	2.40	0.51
1:B:120:ILE:CD1	1:B:171:TRP:HB3	2.42	0.50
1:A:218:LEU:HA	1:A:221:VAL:HG12	1.92	0.50
1:B:612:ASN:HB3	1:B:615:CYS:SG	2.51	0.49
2:B:1617:NAG:C1	2:B:1617:NAG:H82	2.42	0.49
1:B:352:THR:HG22	1:B:354:GLN:H	1.78	0.48
1:B:102:ASP:OD1	1:B:104:SER:N	2.47	0.48
1:A:88:LEU:HB3	1:A:109:TYR:HB3	1.97	0.47
1:B:230:GLU:HG2	1:B:263:THR:OG1	2.15	0.46
2:B:1617:NAG:C1	2:B:1617:NAG:C8	2.94	0.46
1:B:230:GLU:OE1	1:B:265:ARG:NH2	2.49	0.46
1:B:237:SER:HA	1:B:270:SER:O	2.17	0.45
1:A:311:THR:HG23	1:A:312:GLU:HG2	1.99	0.45
1:A:221:VAL:O	1:A:221:VAL:HG22	2.17	0.45
1:A:265:ARG:HD3	1:A:413:THR:OG1	2.17	0.44
1:A:380:SER:OG	1:A:611:CYS:SG	2.71	0.44
1:A:230:GLU:OE1	1:A:265:ARG:NH2	2.51	0.44
1:A:219:ILE:N	1:A:220:PRO:HD2	2.31	0.44
1:A:122:LEU:HD22	1:A:178:LEU:CD1	2.49	0.43
1:B:88:LEU:HB3	1:B:109:TYR:HB3	2.00	0.43
1:A:302:PRO:CG	1:A:322:LEU:HD11	2.48	0.43
1:A:334:GLN:O	1:A:378:ALA:HA	2.19	0.42
1:A:294:TRP:CZ2	1:A:313:PRO:HG2	2.54	0.42

Continued on next page...

Continued from previous page...

Atom-1	Atom-2	Interatomic distance (Å)	Clash overlap (Å)
1:A:96:THR:HG22	1:A:96:THR:O	2.20	0.42
1:B:87:SER:HG	1:B:154:THR:HG1	1.65	0.42
1:A:391:ASP:OD1	1:A:391:ASP:N	2.53	0.41
1:A:612:ASN:HB3	1:A:615:CYS:SG	2.60	0.41
1:B:333:PHE:C	1:B:333:PHE:CD1	2.94	0.41
1:A:285:ALA:O	1:A:286:SER:C	2.58	0.41
1:B:120:ILE:HD11	1:B:171:TRP:CD1	2.55	0.41
1:A:333:PHE:C	1:A:333:PHE:CD1	2.94	0.41
1:A:414:ARG:NH1	1:B:600:LEU:HD21	2.36	0.41
1:B:288:GLU:HG3	1:B:292:GLN:HE21	1.86	0.40

There are no symmetry-related clashes.

5.3 Torsion angles [i](#)

5.3.1 Protein backbone [i](#)

In the following table, the Percentiles column shows the percent Ramachandran outliers of the chain as a percentile score with respect to all X-ray entries followed by that with respect to entries of similar resolution.

The Analysed column shows the number of residues for which the backbone conformation was analysed, and the total number of residues.

Mol	Chain	Analysed	Favoured	Allowed	Outliers	Percentiles	
1	A	335/372 (90%)	322 (96%)	10 (3%)	3 (1%)	17	25
1	B	334/372 (90%)	313 (94%)	20 (6%)	1 (0%)	41	55
All	All	669/744 (90%)	635 (95%)	30 (4%)	4 (1%)	25	36

All (4) Ramachandran outliers are listed below:

Mol	Chain	Res	Type
1	A	142	LEU
1	A	314	TRP
1	A	386	VAL
1	B	386	VAL

5.3.2 Protein sidechains [i](#)

In the following table, the Percentiles column shows the percent sidechain outliers of the chain as a percentile score with respect to all X-ray entries followed by that with respect to entries of similar resolution.

The Analysed column shows the number of residues for which the sidechain conformation was analysed, and the total number of residues.

Mol	Chain	Analysed	Rotameric	Outliers	Percentiles	
1	A	296/324 (91%)	291 (98%)	5 (2%)	60	78
1	B	297/324 (92%)	287 (97%)	10 (3%)	37	56
All	All	593/648 (92%)	578 (98%)	15 (2%)	47	67

All (15) residues with a non-rotameric sidechain are listed below:

Mol	Chain	Res	Type
1	A	325	THR
1	A	374	SER
1	A	391	ASP
1	A	392	TRP
1	A	607	SER
1	B	146	MET
1	B	192	THR
1	B	251	ARG
1	B	275	ASP
1	B	291	ARG
1	B	312	GLU
1	B	315	ARG
1	B	322	LEU
1	B	392	TRP
1	B	606	CYS

Some sidechains can be flipped to improve hydrogen bonding and reduce clashes. All (3) such sidechains are listed below:

Mol	Chain	Res	Type
1	A	246	ASN
1	B	292	GLN
1	B	372	ASN

5.3.3 RNA [i](#)

There are no RNA molecules in this entry.

5.4 Non-standard residues in protein, DNA, RNA chains [i](#)

There are no non-standard protein/DNA/RNA residues in this entry.

5.5 Carbohydrates [i](#)

There are no monosaccharides in this entry.

5.6 Ligand geometry [i](#)

1 ligand is modelled in this entry.

In the following table, the Counts columns list the number of bonds (or angles) for which Mogul statistics could be retrieved, the number of bonds (or angles) that are observed in the model and the number of bonds (or angles) that are defined in the Chemical Component Dictionary. The Link column lists molecule types, if any, to which the group is linked. The Z score for a bond length (or angle) is the number of standard deviations the observed value is removed from the expected value. A bond length (or angle) with $|Z| > 2$ is considered an outlier worth inspection. RMSZ is the root-mean-square of all Z scores of the bond lengths (or angles).

Mol	Type	Chain	Res	Link	Bond lengths			Bond angles		
					Counts	RMSZ	# Z > 2	Counts	RMSZ	# Z > 2
2	NAG	B	1617	1	14,14,15	0.52	0	17,19,21	1.51	4 (23%)

In the following table, the Chirals column lists the number of chiral outliers, the number of chiral centers analysed, the number of these observed in the model and the number defined in the Chemical Component Dictionary. Similar counts are reported in the Torsion and Rings columns. '-' means no outliers of that kind were identified.

Mol	Type	Chain	Res	Link	Chirals	Torsions	Rings
2	NAG	B	1617	1	-	5/6/23/26	0/1/1/1

There are no bond length outliers.

All (4) bond angle outliers are listed below:

Mol	Chain	Res	Type	Atoms	Z	Observed(°)	Ideal(°)
2	B	1617	NAG	C8-C7-N2	3.31	121.71	116.10
2	B	1617	NAG	C2-N2-C7	2.97	127.13	122.90
2	B	1617	NAG	C1-O5-C5	2.27	115.26	112.19
2	B	1617	NAG	C1-C2-N2	2.18	114.22	110.49

There are no chirality outliers.

All (5) torsion outliers are listed below:

Mol	Chain	Res	Type	Atoms
2	B	1617	NAG	C4-C5-C6-O6
2	B	1617	NAG	O5-C5-C6-O6
2	B	1617	NAG	C8-C7-N2-C2
2	B	1617	NAG	O7-C7-N2-C2
2	B	1617	NAG	C1-C2-N2-C7

There are no ring outliers.

1 monomer is involved in 2 short contacts:

Mol	Chain	Res	Type	Clashes	Symm-Clashes
2	B	1617	NAG	2	0

5.7 Other polymers [i](#)

There are no such residues in this entry.

5.8 Polymer linkage issues [i](#)

There are no chain breaks in this entry.

6 Fit of model and data [i](#)

6.1 Protein, DNA and RNA chains [i](#)

In the following table, the column labelled '#RSRZ> 2' contains the number (and percentage) of RSRZ outliers, followed by percent RSRZ outliers for the chain as percentile scores relative to all X-ray entries and entries of similar resolution. The OWAB column contains the minimum, median, 95th percentile and maximum values of the occupancy-weighted average B-factor per residue. The column labelled 'Q< 0.9' lists the number of (and percentage) of residues with an average occupancy less than 0.9.

Mol	Chain	Analysed	<RSRZ>	#RSRZ>2	OWAB(Å ²)	Q<0.9
1	A	341/372 (91%)	-0.10	1 (0%) 94 93	37, 63, 91, 103	0
1	B	340/372 (91%)	-0.01	4 (1%) 79 77	35, 68, 107, 122	0
All	All	681/744 (91%)	-0.06	5 (0%) 87 86	35, 65, 99, 122	0

All (5) RSRZ outliers are listed below:

Mol	Chain	Res	Type	RSRZ
1	B	86	ARG	4.6
1	B	105	HIS	4.2
1	B	141	ARG	2.6
1	A	284	VAL	2.3
1	B	127	TRP	2.3

6.2 Non-standard residues in protein, DNA, RNA chains [i](#)

There are no non-standard protein/DNA/RNA residues in this entry.

6.3 Carbohydrates [i](#)

There are no monosaccharides in this entry.

6.4 Ligands [i](#)

In the following table, the Atoms column lists the number of modelled atoms in the group and the number defined in the chemical component dictionary. The B-factors column lists the minimum, median, 95th percentile and maximum values of B factors of atoms in the group. The column labelled 'Q< 0.9' lists the number of atoms with occupancy less than 0.9.

Mol	Type	Chain	Res	Atoms	RSCC	RSR	B-factors(\AA^2)	Q<0.9
2	NAG	B	1617	14/15	0.89	0.12	98,111,118,120	0

6.5 Other polymers [i](#)

There are no such residues in this entry.