



Full wwPDB X-ray Structure Validation Report ⓘ

Dec 17, 2023 – 11:24 am GMT

PDB ID : 4UFH
Title : Mouse Galactocerebrosidase complexed with iso-galacto-fagomine IGF
Authors : Hill, C.H.; Viuff, A.H.; Spratley, S.J.; Salamone, S.; Christensen, S.H.; Read, R.J.; Moriarty, N.W.; Jensen, H.H.; Deane, J.E.
Deposited on : 2015-03-17
Resolution : 2.16 Å(reported)

This is a Full wwPDB X-ray Structure Validation Report for a publicly released PDB entry.

We welcome your comments at validation@mail.wwpdb.org

A user guide is available at

<https://www.wwpdb.org/validation/2017/XrayValidationReportHelp>

with specific help available everywhere you see the ⓘ symbol.

The types of validation reports are described at

<http://www.wwpdb.org/validation/2017/FAQs#types>.

The following versions of software and data (see [references ⓘ](#)) were used in the production of this report:

MolProbity : 4.02b-467
Mogul : 1.8.4, CSD as541be (2020)
Xtriage (Phenix) : 1.13
EDS : 2.36
Percentile statistics : 20191225.v01 (using entries in the PDB archive December 25th 2019)
Refmac : 5.8.0158
CCP4 : 7.0.044 (Gargrove)
Ideal geometry (proteins) : Engh & Huber (2001)
Ideal geometry (DNA, RNA) : Parkinson et al. (1996)
Validation Pipeline (wwPDB-VP) : 2.36

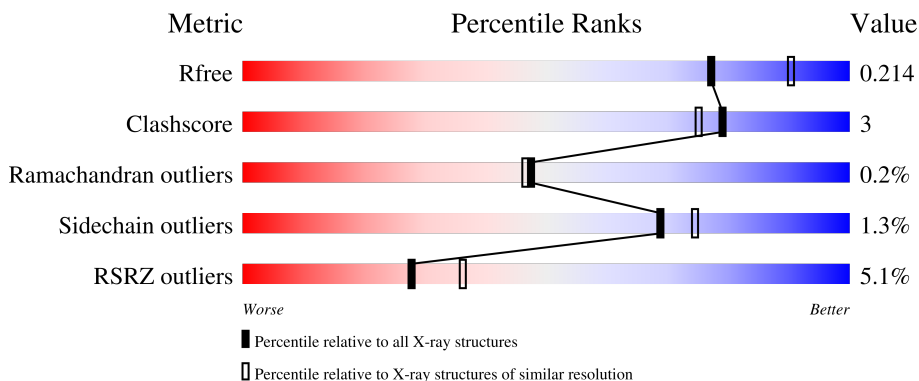
1 Overall quality at a glance

The following experimental techniques were used to determine the structure:

X-RAY DIFFRACTION

The reported resolution of this entry is 2.16 Å.

Percentile scores (ranging between 0-100) for global validation metrics of the entry are shown in the following graphic. The table shows the number of entries on which the scores are based.



Metric	Whole archive (#Entries)	Similar resolution (#Entries, resolution range(Å))
R_{free}	130704	1479 (2.16-2.16)
Clashscore	141614	1585 (2.16-2.16)
Ramachandran outliers	138981	1560 (2.16-2.16)
Sidechain outliers	138945	1559 (2.16-2.16)
RSRZ outliers	127900	1456 (2.16-2.16)

The table below summarises the geometric issues observed across the polymeric chains and their fit to the electron density. The red, orange, yellow and green segments of the lower bar indicate the fraction of residues that contain outliers for ≥ 3 , 2, 1 and 0 types of geometric quality criteria respectively. A grey segment represents the fraction of residues that are not modelled. The numeric value for each fraction is indicated below the corresponding segment, with a dot representing fractions $\leq 5\%$. The upper red bar (where present) indicates the fraction of residues that have poor fit to the electron density. The numeric value is given above the bar.

Mol	Chain	Length	Quality of chain
1	A	654	 5% 90% 8%
2	B	2	 50% 50%
2	C	2	 100%
2	D	2	 100%

The following table lists non-polymeric compounds, carbohydrate monomers and non-standard

residues in protein, DNA, RNA chains that are outliers for geometric or electron-density-fit criteria:

Mol	Type	Chain	Res	Chirality	Geometry	Clashes	Electron density
2	NAG	B	2	-	-	-	X
2	NAG	C	2	-	-	-	X
7	NAG	A	1387	-	-	-	X

2 Entry composition i

There are 8 unique types of molecules in this entry. The entry contains 5572 atoms, of which 0 are hydrogens and 0 are deuteriums.

In the tables below, the ZeroOcc column contains the number of atoms modelled with zero occupancy, the AltConf column contains the number of residues with at least one atom in alternate conformation and the Trace column contains the number of residues modelled with at most 2 atoms.

- Molecule 1 is a protein called GALACTOCEREBROSIDASE.

Mol	Chain	Residues	Atoms					ZeroOcc	AltConf	Trace
			Total	C	N	O	S			
1	A	641	5234	3378	881	960	15	0	9	0

There are 10 discrepancies between the modelled and reference sequences:

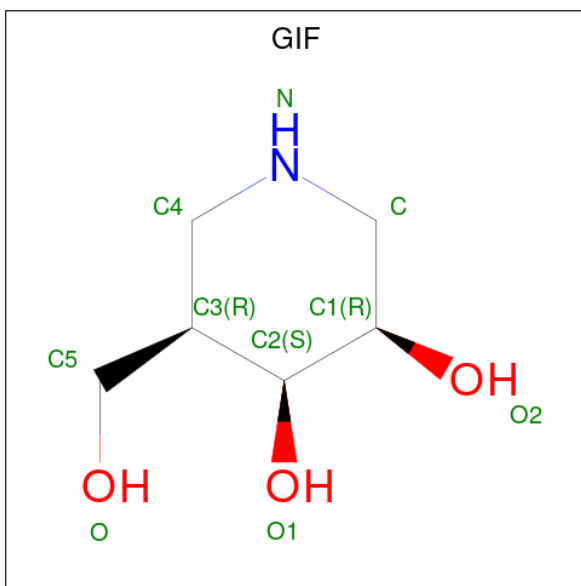
Chain	Residue	Modelled	Actual	Comment	Reference
A	15	HIS	-	expression tag	UNP P54818
A	16	HIS	-	expression tag	UNP P54818
A	17	HIS	-	expression tag	UNP P54818
A	18	HIS	-	expression tag	UNP P54818
A	19	HIS	-	expression tag	UNP P54818
A	20	HIS	-	expression tag	UNP P54818
A	21	ILE	-	expression tag	UNP P54818
A	22	GLU	-	expression tag	UNP P54818
A	23	GLY	-	expression tag	UNP P54818
A	24	ARG	-	expression tag	UNP P54818

- Molecule 2 is an oligosaccharide called 2-acetamido-2-deoxy-beta-D-glucopyranose-(1-4)-2-acetamido-2-deoxy-beta-D-glucopyranose.



Mol	Chain	Residues	Atoms				ZeroOcc	AltConf	Trace
			Total	C	N	O			
2	B	2	28	16	2	10	0	0	0
2	C	2	28	16	2	10	0	0	0
2	D	2	28	16	2	10	0	0	0

- Molecule 3 is D-galacto-isofagomine (three-letter code: GIF) (formula: $C_6H_{13}NO_3$).



Mol	Chain	Residues	Atoms			ZeroOcc	AltConf	
			Total	C	N			O
3	A	1	10	6	1	3	0	0

- Molecule 4 is NICKEL (II) ION (three-letter code: NI) (formula: Ni).

Mol	Chain	Residues	Atoms		ZeroOcc	AltConf
			Total	Ni		
4	A	2	2	2	0	0

- Molecule 5 is CALCIUM ION (three-letter code: CA) (formula: Ca).

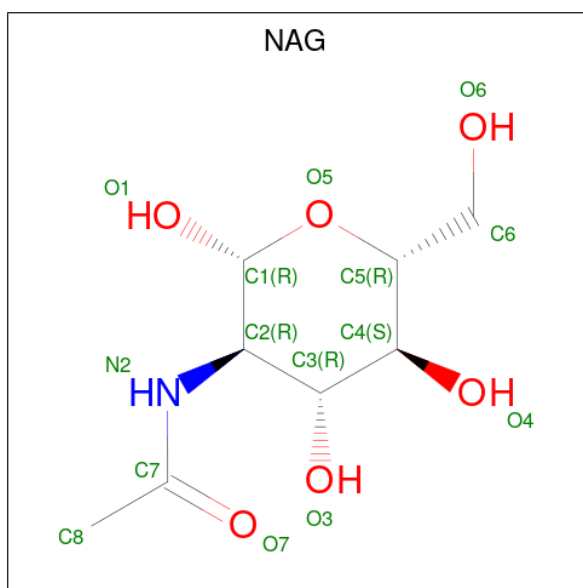
Mol	Chain	Residues	Atoms		ZeroOcc	AltConf
			Total	Ca		
5	A	1	1	1	0	0

- Molecule 6 is TETRAETHYLENE GLYCOL (three-letter code: PG4) (formula: $C_8H_{18}O_5$).



Mol	Chain	Residues	Atoms			ZeroOcc	AltConf
6	A	1	Total	C	O	0	0
			13	8	5		

- Molecule 7 is 2-acetamido-2-deoxy-beta-D-glucopyranose (three-letter code: NAG) (formula: $C_8H_{15}NO_6$).



Mol	Chain	Residues	Atoms				ZeroOcc	AltConf
7	A	1	Total	C	N	O	0	0
			14	8	1	5		

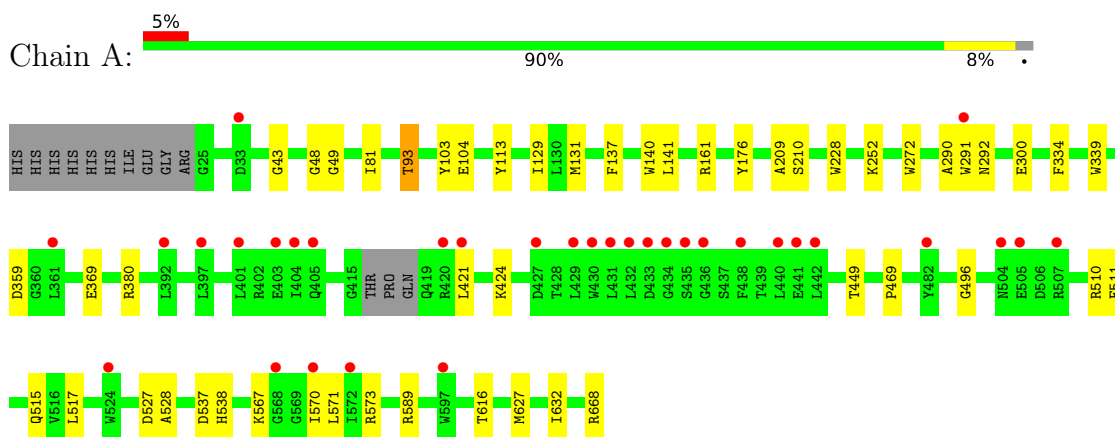
- Molecule 8 is water.

Mol	Chain	Residues	Atoms		ZeroOcc	AltConf
8	A	214	Total 214	O 214	0	0

3 Residue-property plots [i](#)

These plots are drawn for all protein, RNA, DNA and oligosaccharide chains in the entry. The first graphic for a chain summarises the proportions of the various outlier classes displayed in the second graphic. The second graphic shows the sequence view annotated by issues in geometry and electron density. Residues are color-coded according to the number of geometric quality criteria for which they contain at least one outlier: green = 0, yellow = 1, orange = 2 and red = 3 or more. A red dot above a residue indicates a poor fit to the electron density ($RSRZ > 2$). Stretches of 2 or more consecutive residues without any outlier are shown as a green connector. Residues present in the sample, but not in the model, are shown in grey.

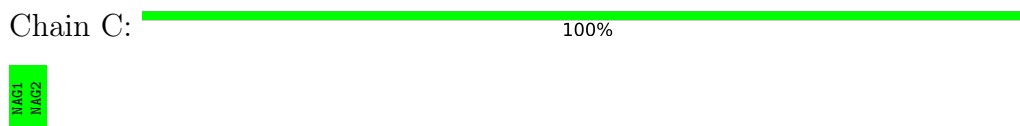
- Molecule 1: GALACTOCEREBROSIDASE



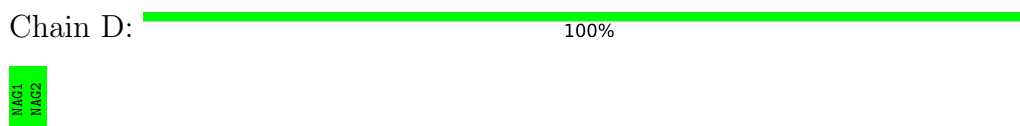
- Molecule 2: 2-acetamido-2-deoxy-beta-D-glucopyranose-(1-4)-2-acetamido-2-deoxy-beta-D-glucopyranose



- Molecule 2: 2-acetamido-2-deoxy-beta-D-glucopyranose-(1-4)-2-acetamido-2-deoxy-beta-D-glucopyranose



- Molecule 2: 2-acetamido-2-deoxy-beta-D-glucopyranose-(1-4)-2-acetamido-2-deoxy-beta-D-glucopyranose



4 Data and refinement statistics

Property	Value	Source
Space group	H 3 2	Depositor
Cell constants a, b, c, α , β , γ	247.22Å 247.22Å 77.25Å 90.00° 90.00° 120.00°	Depositor
Resolution (Å)	47.08 – 2.16 47.08 – 2.16	Depositor EDS
% Data completeness (in resolution range)	99.7 (47.08-2.16) 97.6 (47.08-2.16)	Depositor EDS
R_{merge}	0.16	Depositor
R_{sym}	(Not available)	Depositor
$\langle I/\sigma(I) \rangle$ ¹	1.86 (at 2.16Å)	Xtrriage
Refinement program	PHENIX (PHENIX.REFINE)	Depositor
R, R_{free}	0.190 , 0.215 0.193 , 0.214	Depositor DCC
R_{free} test set	2466 reflections (5.14%)	wwPDB-VP
Wilson B-factor (Å ²)	31.2	Xtrriage
Anisotropy	0.420	Xtrriage
Bulk solvent k_{sol} (e/Å ³), B_{sol} (Å ²)	0.36 , 61.9	EDS
L-test for twinning ²	$\langle L \rangle = 0.43$, $\langle L^2 \rangle = 0.26$	Xtrriage
Estimated twinning fraction	No twinning to report.	Xtrriage
F_o, F_c correlation	0.95	EDS
Total number of atoms	5572	wwPDB-VP
Average B, all atoms (Å ²)	48.0	wwPDB-VP

Xtrriage's analysis on translational NCS is as follows: *The largest off-origin peak in the Patterson function is 3.33% of the height of the origin peak. No significant pseudotranslation is detected.*

¹Intensities estimated from amplitudes.

²Theoretical values of $\langle |L| \rangle$, $\langle L^2 \rangle$ for acentric reflections are 0.5, 0.333 respectively for untwinned datasets, and 0.375, 0.2 for perfectly twinned datasets.

5 Model quality [i](#)

5.1 Standard geometry [i](#)

Bond lengths and bond angles in the following residue types are not validated in this section: PG4, CA, NAG, NI, GIF

The Z score for a bond length (or angle) is the number of standard deviations the observed value is removed from the expected value. A bond length (or angle) with $|Z| > 5$ is considered an outlier worth inspection. RMSZ is the root-mean-square of all Z scores of the bond lengths (or angles).

Mol	Chain	Bond lengths		Bond angles	
		RMSZ	# Z >5	RMSZ	# Z >5
1	A	0.24	0/5398	0.42	0/7352

There are no bond length outliers.

There are no bond angle outliers.

There are no chirality outliers.

There are no planarity outliers.

5.2 Too-close contacts [i](#)

In the following table, the Non-H and H(model) columns list the number of non-hydrogen atoms and hydrogen atoms in the chain respectively. The H(added) column lists the number of hydrogen atoms added and optimized by MolProbity. The Clashes column lists the number of clashes within the asymmetric unit, whereas Symm-Clashes lists symmetry-related clashes.

Mol	Chain	Non-H	H(model)	H(added)	Clashes	Symm-Clashes
1	A	5234	0	4976	27	0
2	B	28	0	25	1	0
2	C	28	0	25	0	0
2	D	28	0	25	0	0
3	A	10	0	13	0	0
4	A	2	0	0	0	0
5	A	1	0	0	0	0
6	A	13	0	18	2	0
7	A	14	0	13	0	0
8	A	214	0	0	1	0
All	All	5572	0	5095	29	0

The all-atom clashscore is defined as the number of clashes found per 1000 atoms (including hydrogen atoms). The all-atom clashscore for this structure is 3.

All (29) close contacts within the same asymmetric unit are listed below, sorted by their clash magnitude.

Atom-1	Atom-2	Interatomic distance (Å)	Clash overlap (Å)
1:A:93:THR:HA	1:A:570:ILE:HG23	1.79	0.64
1:A:421:LEU:HD13	1:A:424:LYS:HD2	1.79	0.63
1:A:616:THR:HB	1:A:627:MET:HB2	1.84	0.59
1:A:589[B]:ARG:NH1	8:A:2203:HOH:O	2.39	0.56
1:A:469:PRO:HB3	1:A:668:ARG:HH11	1.74	0.52
1:A:300:GLU:HG2	1:A:538:HIS:CD2	2.46	0.51
1:A:627:MET:HG3	1:A:632:ILE:HD13	1.93	0.51
1:A:339:TRP:CE2	1:A:359:ASP:HB3	2.46	0.51
1:A:48:GLY:N	1:A:49:GLY:HA2	2.25	0.51
1:A:81:ILE:HG12	1:A:129:ILE:HB	1.94	0.49
1:A:104[A]:GLU:HB3	1:A:140:TRP:CE3	2.48	0.48
1:A:131:MET:HG2	1:A:176:TYR:HB2	1.95	0.48
1:A:228:TRP:CE2	1:A:252:LYS:HE2	2.48	0.48
1:A:137:PHE:HB3	1:A:141:LEU:HD12	1.95	0.48
1:A:380:ARG:CZ	6:A:1005:PG4:H41	2.44	0.48
1:A:104[B]:GLU:H	1:A:104[B]:GLU:CD	2.18	0.48
1:A:528:ALA:HA	1:A:573:ARG:HG2	1.98	0.46
1:A:334:PHE:CD2	1:A:449:THR:HG21	2.51	0.44
2:B:1:NAG:H62	2:B:2:NAG:O5	2.18	0.44
1:A:272:TRP:CH2	1:A:290:ALA:HB2	2.52	0.44
1:A:567:LYS:HD3	1:A:567:LYS:HA	1.81	0.44
1:A:209:ALA:HA	1:A:210:SER:HA	1.74	0.44
1:A:291:TRP:HA	1:A:292:ASN:HA	1.58	0.43
1:A:570:ILE:H	1:A:570:ILE:HG13	1.63	0.42
1:A:510[B]:ARG:HD3	1:A:511:PHE:CE2	2.53	0.42
1:A:43:GLY:HA3	1:A:81:ILE:HB	2.01	0.42
1:A:496:GLY:HA2	1:A:517:LEU:HD12	2.02	0.42
1:A:537:ASP:OD2	1:A:668:ARG:NH1	2.54	0.41
6:A:1005:PG4:H42	6:A:1005:PG4:H22	1.84	0.40

There are no symmetry-related clashes.

5.3 Torsion angles [i](#)

5.3.1 Protein backbone [i](#)

In the following table, the Percentiles column shows the percent Ramachandran outliers of the chain as a percentile score with respect to all X-ray entries followed by that with respect to entries of similar resolution.

The Analysed column shows the number of residues for which the backbone conformation was analysed, and the total number of residues.

Mol	Chain	Analysed	Favoured	Allowed	Outliers	Percentiles
1	A	646/654 (99%)	613 (95%)	32 (5%)	1 (0%)	47 46

All (1) Ramachandran outliers are listed below:

Mol	Chain	Res	Type
1	A	93	THR

5.3.2 Protein sidechains [i](#)

In the following table, the Percentiles column shows the percent sidechain outliers of the chain as a percentile score with respect to all X-ray entries followed by that with respect to entries of similar resolution.

The Analysed column shows the number of residues for which the sidechain conformation was analysed, and the total number of residues.

Mol	Chain	Analysed	Rotameric	Outliers	Percentiles
1	A	546/555 (98%)	539 (99%)	7 (1%)	69 74

All (7) residues with a non-rotameric sidechain are listed below:

Mol	Chain	Res	Type
1	A	103	TYR
1	A	113	TYR
1	A	161	ARG
1	A	369	GLU
1	A	515	GLN
1	A	527	ASP
1	A	571	LEU

Sometimes sidechains can be flipped to improve hydrogen bonding and reduce clashes. There are no such sidechains identified.

5.3.3 RNA [i](#)

There are no RNA molecules in this entry.

5.4 Non-standard residues in protein, DNA, RNA chains [i](#)

There are no non-standard protein/DNA/RNA residues in this entry.

5.5 Carbohydrates [i](#)

6 monosaccharides are modelled in this entry.

In the following table, the Counts columns list the number of bonds (or angles) for which Mogul statistics could be retrieved, the number of bonds (or angles) that are observed in the model and the number of bonds (or angles) that are defined in the Chemical Component Dictionary. The Link column lists molecule types, if any, to which the group is linked. The Z score for a bond length (or angle) is the number of standard deviations the observed value is removed from the expected value. A bond length (or angle) with $|Z| > 2$ is considered an outlier worth inspection. RMSZ is the root-mean-square of all Z scores of the bond lengths (or angles).

Mol	Type	Chain	Res	Link	Bond lengths			Bond angles		
					Counts	RMSZ	# Z > 2	Counts	RMSZ	# Z > 2
2	NAG	B	1	1,2	14,14,15	0.83	1 (7%)	17,19,21	0.66	0
2	NAG	B	2	2	14,14,15	0.54	0	17,19,21	0.42	0
2	NAG	C	1	1,2	14,14,15	0.50	0	17,19,21	0.52	0
2	NAG	C	2	2	14,14,15	0.29	0	17,19,21	0.36	0
2	NAG	D	1	1,2	14,14,15	0.27	0	17,19,21	0.37	0
2	NAG	D	2	2	14,14,15	0.26	0	17,19,21	0.33	0

In the following table, the Chirals column lists the number of chiral outliers, the number of chiral centers analysed, the number of these observed in the model and the number defined in the Chemical Component Dictionary. Similar counts are reported in the Torsion and Rings columns. '-' means no outliers of that kind were identified.

Mol	Type	Chain	Res	Link	Chirals	Torsions	Rings
2	NAG	B	1	1,2	-	2/6/23/26	0/1/1/1
2	NAG	B	2	2	-	2/6/23/26	0/1/1/1
2	NAG	C	1	1,2	-	1/6/23/26	0/1/1/1
2	NAG	C	2	2	-	0/6/23/26	0/1/1/1
2	NAG	D	1	1,2	-	0/6/23/26	0/1/1/1
2	NAG	D	2	2	-	0/6/23/26	0/1/1/1

All (1) bond length outliers are listed below:

Mol	Chain	Res	Type	Atoms	Z	Observed(Å)	Ideal(Å)
2	B	1	NAG	O5-C1	-3.02	1.38	1.43

There are no bond angle outliers.

There are no chirality outliers.

All (5) torsion outliers are listed below:

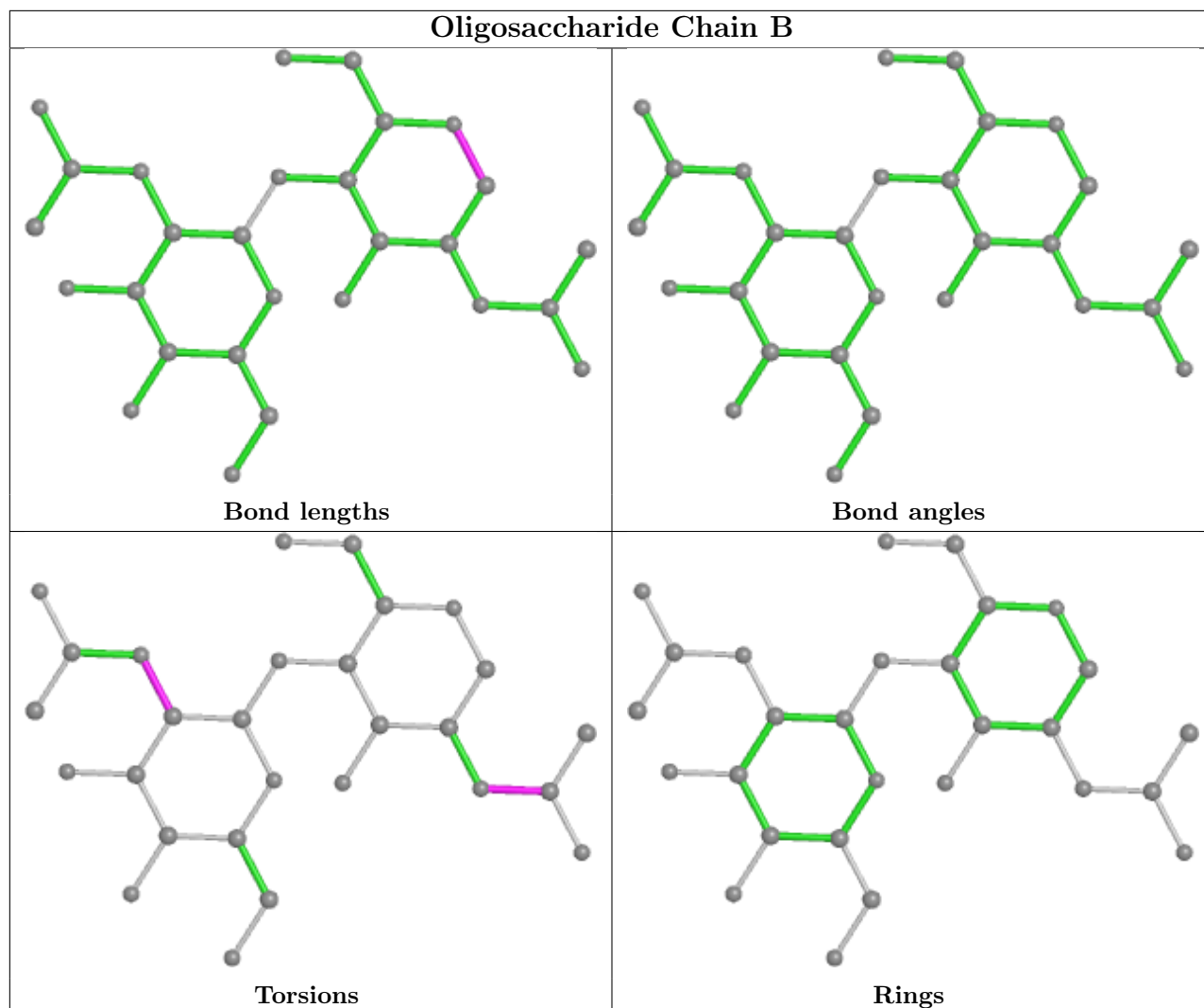
Mol	Chain	Res	Type	Atoms
2	B	1	NAG	C8-C7-N2-C2
2	B	1	NAG	O7-C7-N2-C2
2	B	2	NAG	C1-C2-N2-C7
2	B	2	NAG	C3-C2-N2-C7
2	C	1	NAG	C3-C2-N2-C7

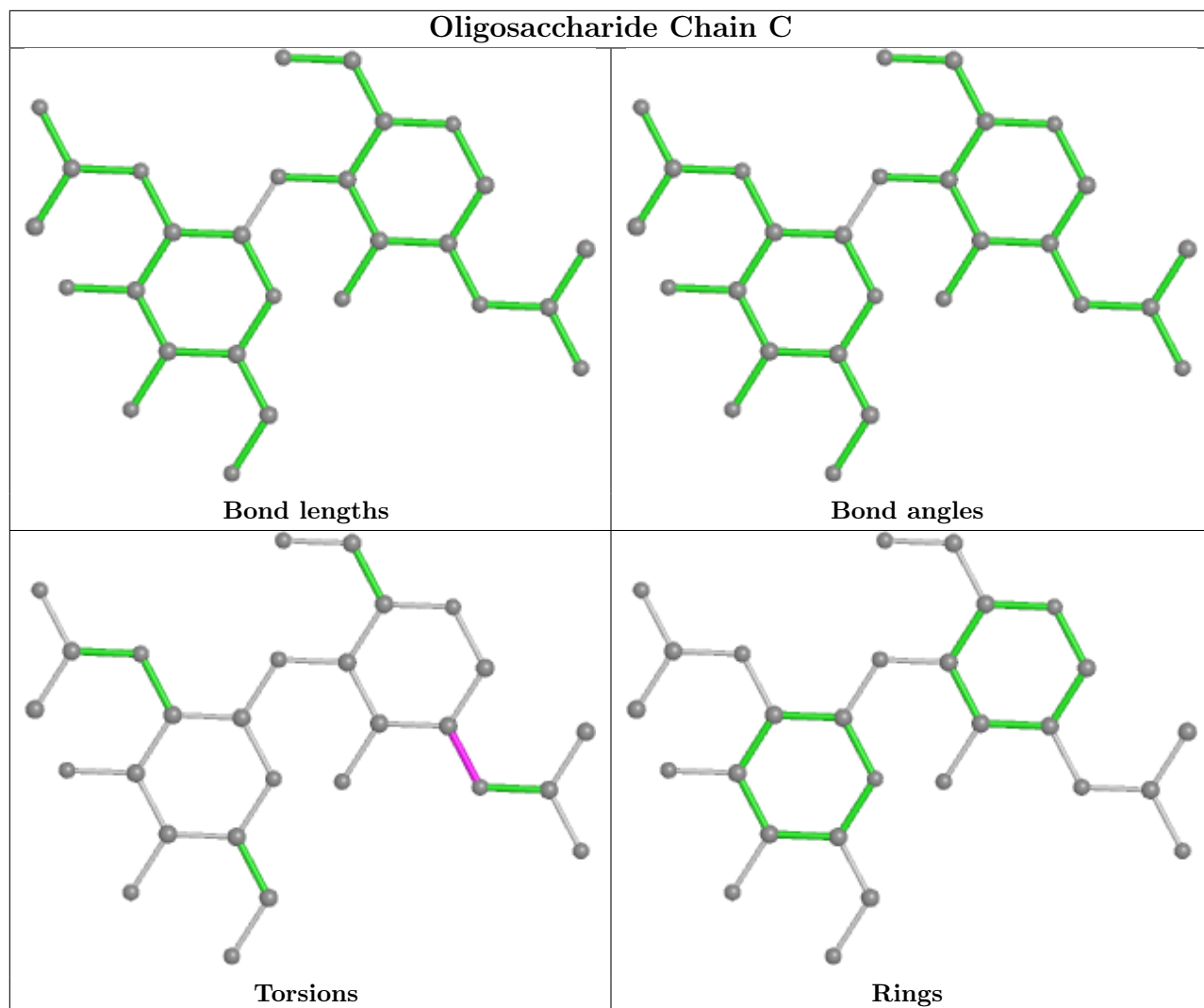
There are no ring outliers.

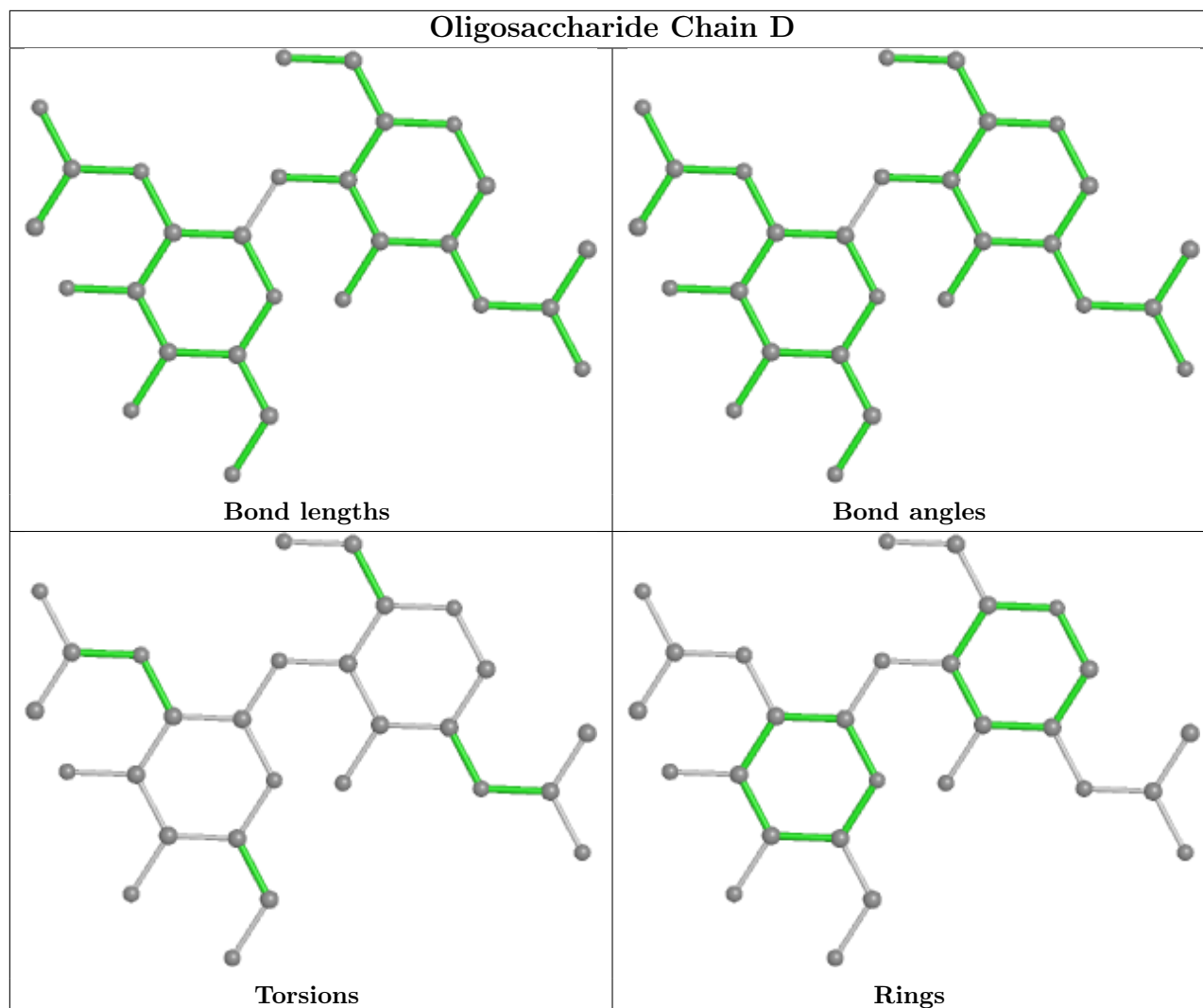
2 monomers are involved in 1 short contact:

Mol	Chain	Res	Type	Clashes	Symm-Clashes
2	B	1	NAG	1	0
2	B	2	NAG	1	0

The following is a two-dimensional graphical depiction of Mogul quality analysis of bond lengths, bond angles, torsion angles, and ring geometry for oligosaccharide.







5.6 Ligand geometry [i](#)

Of 6 ligands modelled in this entry, 3 are monoatomic - leaving 3 for Mogul analysis.

In the following table, the Counts columns list the number of bonds (or angles) for which Mogul statistics could be retrieved, the number of bonds (or angles) that are observed in the model and the number of bonds (or angles) that are defined in the Chemical Component Dictionary. The Link column lists molecule types, if any, to which the group is linked. The Z score for a bond length (or angle) is the number of standard deviations the observed value is removed from the expected value. A bond length (or angle) with $|Z| > 2$ is considered an outlier worth inspection. RMSZ is the root-mean-square of all Z scores of the bond lengths (or angles).

Mol	Type	Chain	Res	Link	Bond lengths			Bond angles		
					Counts	RMSZ	# $ Z > 2$	Counts	RMSZ	# $ Z > 2$
6	PG4	A	1005	-	12,12,12	0.78	0	11,11,11	0.45	0
7	NAG	A	1387	1	14,14,15	2.11	1 (7%)	17,19,21	1.47	3 (17%)
3	GIF	A	1001	-	9,10,10	1.84	2 (22%)	9,13,13	1.81	3 (33%)

In the following table, the Chirals column lists the number of chiral outliers, the number of chiral centers analysed, the number of these observed in the model and the number defined in the Chemical Component Dictionary. Similar counts are reported in the Torsion and Rings columns. '-' means no outliers of that kind were identified.

Mol	Type	Chain	Res	Link	Chirals	Torsions	Rings
6	PG4	A	1005	-	-	7/10/10/10	-
7	NAG	A	1387	1	-	2/6/23/26	0/1/1/1
3	GIF	A	1001	-	-	0/2/16/16	0/1/1/1

All (3) bond length outliers are listed below:

Mol	Chain	Res	Type	Atoms	Z	Observed(Å)	Ideal(Å)
7	A	1387	NAG	O5-C1	7.60	1.55	1.43
3	A	1001	GIF	C1-C2	-3.49	1.47	1.52
3	A	1001	GIF	C3-C2	-3.22	1.48	1.53

All (6) bond angle outliers are listed below:

Mol	Chain	Res	Type	Atoms	Z	Observed(°)	Ideal(°)
7	A	1387	NAG	C1-O5-C5	4.36	118.11	112.19
3	A	1001	GIF	C4-N-C	3.01	115.01	111.70
3	A	1001	GIF	O-C5-C3	2.75	117.67	111.36
7	A	1387	NAG	O4-C4-C3	-2.58	104.38	110.35
3	A	1001	GIF	C-C1-C2	2.35	113.09	110.33
7	A	1387	NAG	C2-N2-C7	2.25	126.10	122.90

There are no chirality outliers.

All (9) torsion outliers are listed below:

Mol	Chain	Res	Type	Atoms
7	A	1387	NAG	O5-C5-C6-O6
6	A	1005	PG4	O2-C3-C4-O3
7	A	1387	NAG	C4-C5-C6-O6
6	A	1005	PG4	O4-C7-C8-O5
6	A	1005	PG4	O1-C1-C2-O2
6	A	1005	PG4	C4-C3-O2-C2
6	A	1005	PG4	C6-C5-O3-C4
6	A	1005	PG4	O3-C5-C6-O4
6	A	1005	PG4	C8-C7-O4-C6

There are no ring outliers.

1 monomer is involved in 2 short contacts:

Mol	Chain	Res	Type	Clashes	Symm-Clashes
6	A	1005	PG4	2	0

5.7 Other polymers [i](#)

There are no such residues in this entry.

5.8 Polymer linkage issues [i](#)

There are no chain breaks in this entry.

6 Fit of model and data

6.1 Protein, DNA and RNA chains

In the following table, the column labelled ‘#RSRZ> 2’ contains the number (and percentage) of RSRZ outliers, followed by percent RSRZ outliers for the chain as percentile scores relative to all X-ray entries and entries of similar resolution. The OWAB column contains the minimum, median, 95th percentile and maximum values of the occupancy-weighted average B-factor per residue. The column labelled ‘Q< 0.9’ lists the number of (and percentage) of residues with an average occupancy less than 0.9.

Mol	Chain	Analysed	<RSRZ>	#RSRZ>2	OWAB(Å ²)	Q<0.9
1	A	641/654 (98%)	0.19	33 (5%) 28 36	23, 45, 80, 109	0

All (33) RSRZ outliers are listed below:

Mol	Chain	Res	Type	RSRZ
1	A	432	LEU	8.6
1	A	404	ILE	6.4
1	A	436	GLY	6.2
1	A	431	LEU	6.1
1	A	405	GLN	5.1
1	A	434	GLY	4.5
1	A	401	LEU	3.7
1	A	433	ASP	3.5
1	A	403	GLU	3.5
1	A	429	LEU	3.4
1	A	435	SER	3.3
1	A	33	ASP	3.3
1	A	430	TRP	3.3
1	A	482	TYR	3.2
1	A	421	LEU	3.2
1	A	504	ASN	3.1
1	A	392	LEU	3.1
1	A	442	LEU	3.0
1	A	397	LEU	2.8
1	A	505	GLU	2.7
1	A	507	ARG	2.6
1	A	570	ILE	2.6
1	A	440	LEU	2.4
1	A	438	PHE	2.4
1	A	524	TRP	2.4
1	A	441	GLU	2.4
1	A	420	ARG	2.4

Continued on next page...

Continued from previous page...

Mol	Chain	Res	Type	RSRZ
1	A	361	LEU	2.3
1	A	291	TRP	2.3
1	A	572	ILE	2.2
1	A	597	TRP	2.1
1	A	568	GLY	2.1
1	A	427	ASP	2.0

6.2 Non-standard residues in protein, DNA, RNA chains [i](#)

There are no non-standard protein/DNA/RNA residues in this entry.

6.3 Carbohydrates [i](#)

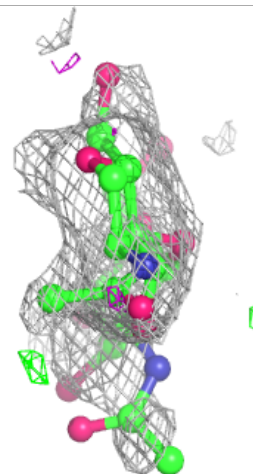
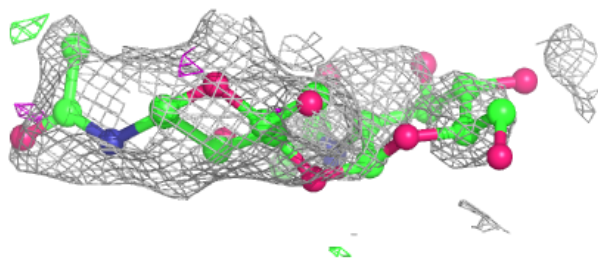
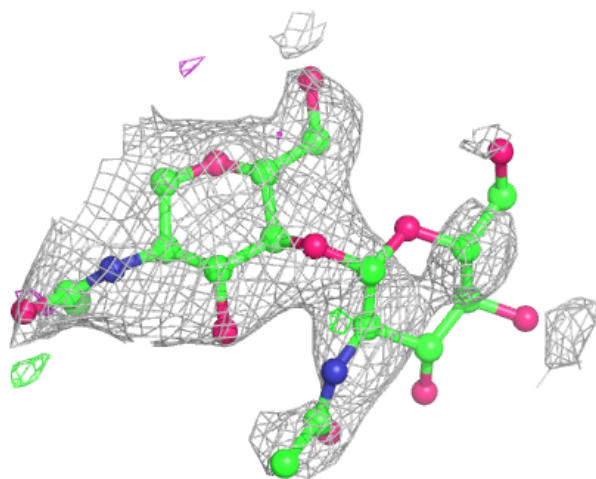
In the following table, the Atoms column lists the number of modelled atoms in the group and the number defined in the chemical component dictionary. The B-factors column lists the minimum, median, 95th percentile and maximum values of B factors of atoms in the group. The column labelled 'Q < 0.9' lists the number of atoms with occupancy less than 0.9.

Mol	Type	Chain	Res	Atoms	RSCC	RSR	B-factors(Å ²)	Q<0.9
2	NAG	B	2	14/15	0.66	0.41	107,111,114,114	0
2	NAG	C	2	14/15	0.77	0.51	94,101,105,106	0
2	NAG	B	1	14/15	0.81	0.16	56,74,83,96	0
2	NAG	D	2	14/15	0.82	0.29	77,81,89,89	0
2	NAG	C	1	14/15	0.86	0.28	52,70,77,88	0
2	NAG	D	1	14/15	0.94	0.15	39,54,58,68	0

The following is a graphical depiction of the model fit to experimental electron density for oligosaccharide. Each fit is shown from different orientation to approximate a three-dimensional view.

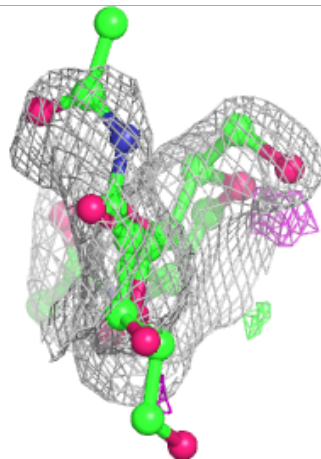
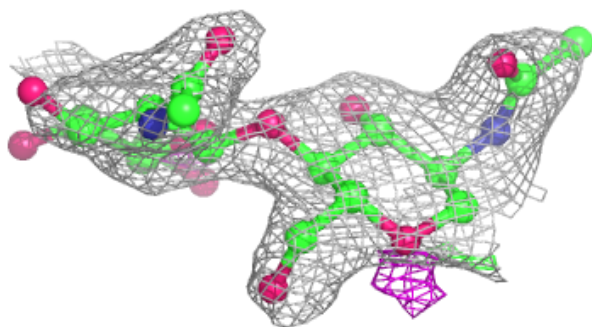
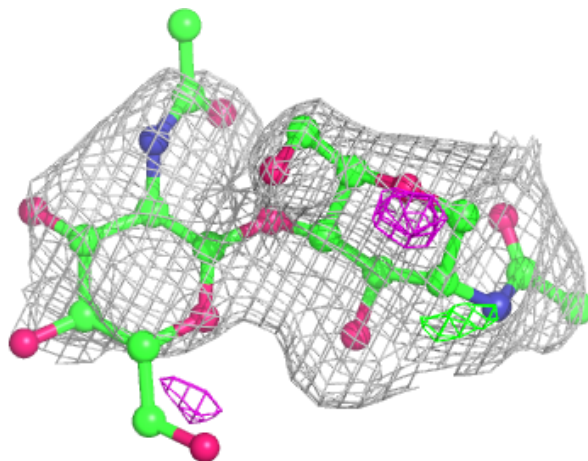
Electron density around Chain B:

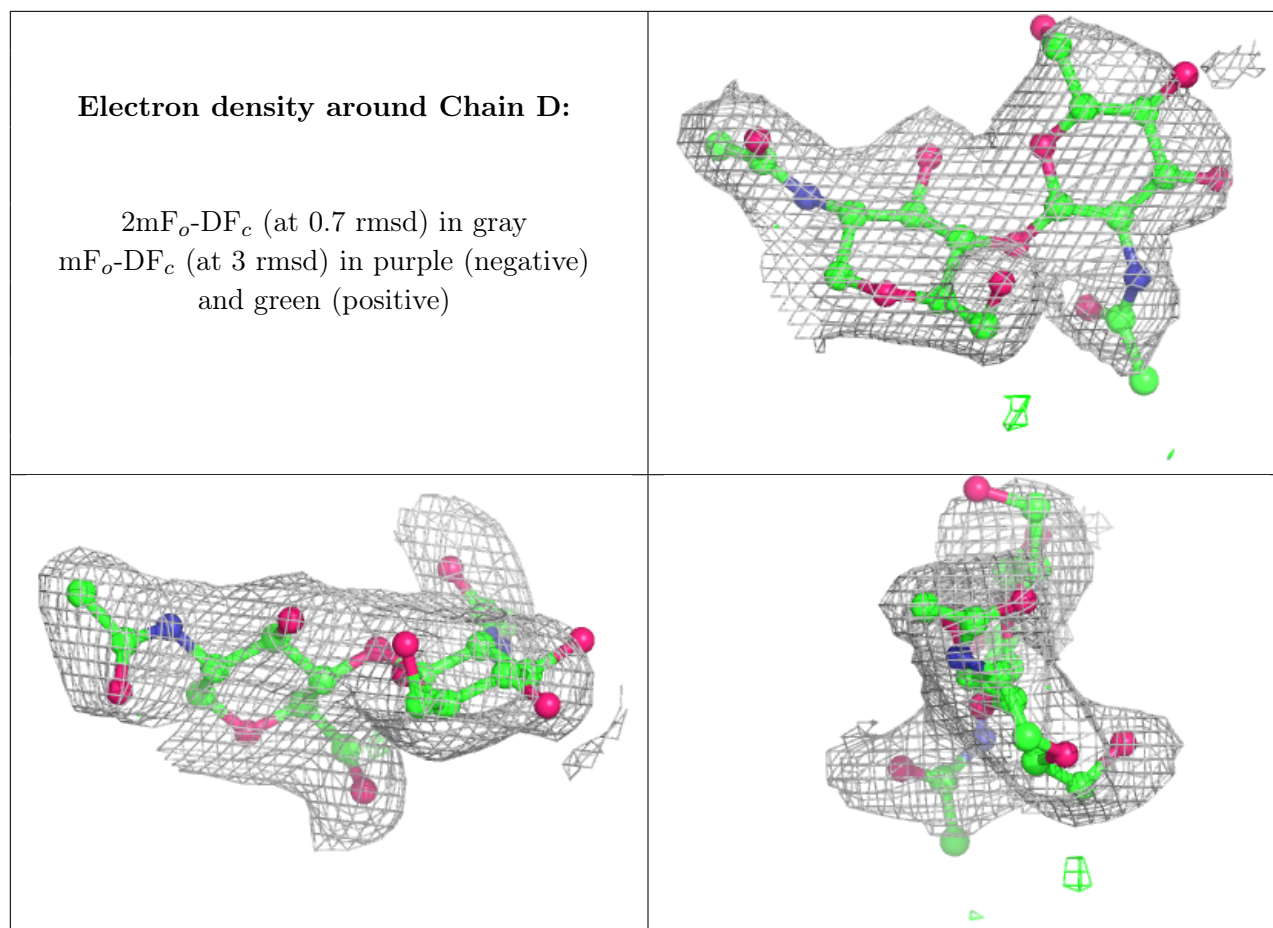
$2mF_o-DF_c$ (at 0.7 rmsd) in gray
 mF_o-DF_c (at 3 rmsd) in purple (negative)
and green (positive)



Electron density around Chain C:

$2mF_o-DF_c$ (at 0.7 rmsd) in gray
 mF_o-DF_c (at 3 rmsd) in purple (negative)
and green (positive)





6.4 Ligands [i](#)

In the following table, the Atoms column lists the number of modelled atoms in the group and the number defined in the chemical component dictionary. The B-factors column lists the minimum, median, 95th percentile and maximum values of B factors of atoms in the group. The column labelled 'Q< 0.9' lists the number of atoms with occupancy less than 0.9.

Mol	Type	Chain	Res	Atoms	RSCC	RSR	B-factors(Å ²)	Q<0.9
7	NAG	A	1387	14/15	0.77	0.43	64,81,88,88	0
6	PG4	A	1005	13/13	0.88	0.21	33,41,52,59	0
4	NI	A	1004	1/1	0.94	0.44	90,90,90,90	1
3	GIF	A	1001	10/10	0.97	0.14	18,25,29,38	0
4	NI	A	1002	1/1	0.98	0.04	61,61,61,61	0
5	CA	A	1003	1/1	0.98	0.03	44,44,44,44	0

6.5 Other polymers [i](#)

There are no such residues in this entry.