



# Full wwPDB X-ray Structure Validation Report ⓘ

Dec 13, 2023 – 03:19 pm GMT

PDB ID : 4TRO  
Title : Structure of the enoyl-ACP reductase of Mycobacterium tuberculosis InhA, inhibited with the active metabolite of isoniazid  
Authors : Chollet, A.; Julien, S.; Mourey, L.; Maveyraud, L.  
Deposited on : 2014-06-17  
Resolution : 1.40 Å(reported)

This is a Full wwPDB X-ray Structure Validation Report for a publicly released PDB entry.

We welcome your comments at [validation@mail.wwpdb.org](mailto:validation@mail.wwpdb.org)

A user guide is available at

<https://www.wwpdb.org/validation/2017/XrayValidationReportHelp>

with specific help available everywhere you see the ⓘ symbol.

The types of validation reports are described at

<http://www.wwpdb.org/validation/2017/FAQs#types>.

---

The following versions of software and data (see [references ⓘ](#)) were used in the production of this report:

MolProbity : 4.02b-467  
Mogul : 1.8.4, CSD as541be (2020)  
Xtriage (Phenix) : 1.13  
EDS : 2.36  
buster-report : 1.1.7 (2018)  
Percentile statistics : 20191225.v01 (using entries in the PDB archive December 25th 2019)  
Refmac : 5.8.0158  
CCP4 : 7.0.044 (Gargrove)  
Ideal geometry (proteins) : Engh & Huber (2001)  
Ideal geometry (DNA, RNA) : Parkinson et al. (1996)  
Validation Pipeline (wwPDB-VP) : 2.36

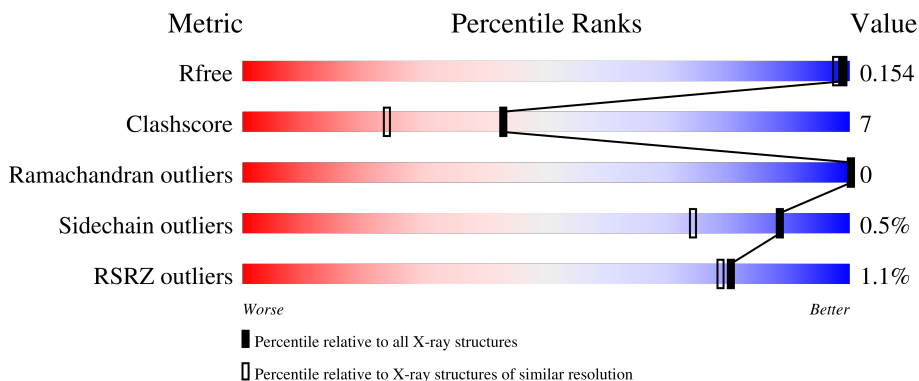
# 1 Overall quality at a glance

The following experimental techniques were used to determine the structure:

*X-RAY DIFFRACTION*

The reported resolution of this entry is 1.40 Å.

Percentile scores (ranging between 0-100) for global validation metrics of the entry are shown in the following graphic. The table shows the number of entries on which the scores are based.



Metric	Whole archive (#Entries)	Similar resolution (#Entries, resolution range(Å))
$R_{free}$	130704	1714 (1.40-1.40)
Clashscore	141614	1812 (1.40-1.40)
Ramachandran outliers	138981	1763 (1.40-1.40)
Sidechain outliers	138945	1762 (1.40-1.40)
RSRZ outliers	127900	1674 (1.40-1.40)

The table below summarises the geometric issues observed across the polymeric chains and their fit to the electron density. The red, orange, yellow and green segments of the lower bar indicate the fraction of residues that contain outliers for  $\geq 3$ , 2, 1 and 0 types of geometric quality criteria respectively. A grey segment represents the fraction of residues that are not modelled. The numeric value for each fraction is indicated below the corresponding segment, with a dot representing fractions  $\leq 5\%$ . The upper red bar (where present) indicates the fraction of residues that have poor fit to the electron density. The numeric value is given above the bar.

Mol	Chain	Length	Quality of chain
1	A	269	

The following table lists non-polymeric compounds, carbohydrate monomers and non-standard residues in protein, DNA, RNA chains that are outliers for geometric or electron-density-fit criteria:

Mol	Type	Chain	Res	Chirality	Geometry	Clashes	Electron density
4	EPE	A	304	-	-	X	-

*Continued on next page...*

*Continued from previous page...*

<b>Mol</b>	<b>Type</b>	<b>Chain</b>	<b>Res</b>	<b>Chirality</b>	<b>Geometry</b>	<b>Clashes</b>	<b>Electron density</b>
5	DMS	A	308	-	-	X	-

## 2 Entry composition [i](#)

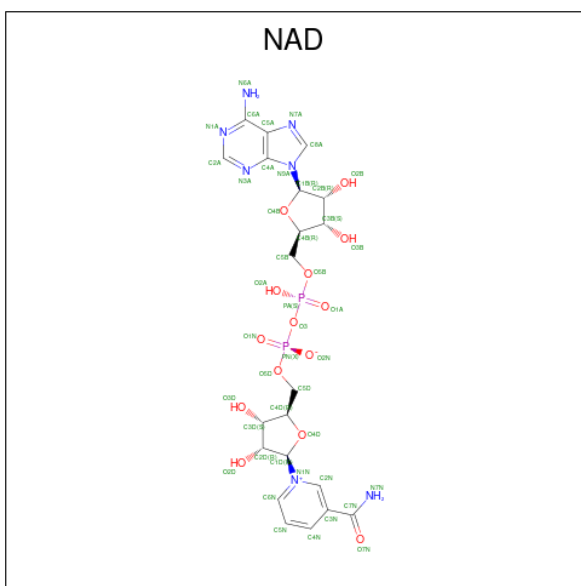
There are 7 unique types of molecules in this entry. The entry contains 2489 atoms, of which 0 are hydrogens and 0 are deuteriums.

In the tables below, the ZeroOcc column contains the number of atoms modelled with zero occupancy, the AltConf column contains the number of residues with at least one atom in alternate conformation and the Trace column contains the number of residues modelled with at most 2 atoms.

- Molecule 1 is a protein called Enoyl-[acyl-carrier-protein] reductase [NADH].

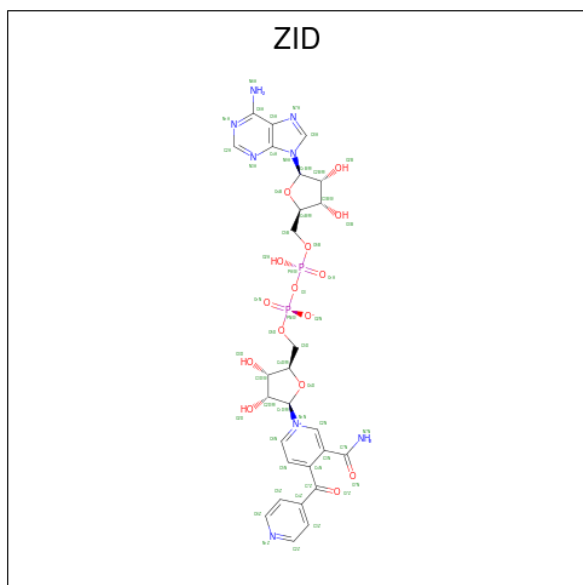
Mol	Chain	Residues	Atoms					ZeroOcc	AltConf	Trace
			Total	C	N	O	S			
1	A	268	2082	1314	366	390	12	0	10	0

- Molecule 2 is NICOTINAMIDE-ADENINE-DINUCLEOTIDE (three-letter code: NAD) (formula: C<sub>21</sub>H<sub>27</sub>N<sub>7</sub>O<sub>14</sub>P<sub>2</sub>).



Mol	Chain	Residues	Atoms					ZeroOcc	AltConf
			Total	C	N	O	P		
2	A	1	44	21	7	14	2	0	1

- Molecule 3 is ISONICOTINIC-ACETYL-NICOTINAMIDE-ADENINE DINUCLEOTIDE (three-letter code: ZID) (formula: C<sub>27</sub>H<sub>30</sub>N<sub>8</sub>O<sub>15</sub>P<sub>2</sub>).



Mol	Chain	Residues	Atoms					ZeroOcc	AltConf
			Total	C	N	O	P		
3	A	1	52	27	8	15	2	0	1

- Molecule 4 is 4-(2-HYDROXYETHYL)-1-PIPERAZINE ETHANESULFONIC ACID (three-letter code: EPE) (formula: C<sub>8</sub>H<sub>18</sub>N<sub>2</sub>O<sub>4</sub>S).



Mol	Chain	Residues	Atoms					ZeroOcc	AltConf
			Total	C	N	O	S		
4	A	1	15	8	2	4	1	0	0
4	A	1	12	6	2	3	1	0	0

- Molecule 5 is DIMETHYL SULFOXIDE (three-letter code: DMS) (formula: C<sub>2</sub>H<sub>6</sub>OS).



Mol	Chain	Residues	Atoms	ZeroOcc	AltConf
5	A	1	Total C O S 4 2 1 1	0	0
5	A	1	Total C O S 4 2 1 1	0	0
5	A	1	Total C O S 4 2 1 1	0	0
5	A	1	Total C O S 4 2 1 1	0	0

- Molecule 6 is SODIUM ION (three-letter code: NA) (formula: Na).

Mol	Chain	Residues	Atoms	ZeroOcc	AltConf
6	A	2	Total Na 2 2	0	0


- Molecule 7 is water.

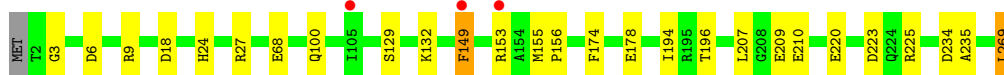
Mol	Chain	Residues	Atoms	ZeroOcc	AltConf
7	A	266	Total O 266 266	0	0

### 3 Residue-property plots [i](#)

These plots are drawn for all protein, RNA, DNA and oligosaccharide chains in the entry. The first graphic for a chain summarises the proportions of the various outlier classes displayed in the second graphic. The second graphic shows the sequence view annotated by issues in geometry and electron density. Residues are color-coded according to the number of geometric quality criteria for which they contain at least one outlier: green = 0, yellow = 1, orange = 2 and red = 3 or more. A red dot above a residue indicates a poor fit to the electron density ( $RSRZ > 2$ ). Stretches of 2 or more consecutive residues without any outlier are shown as a green connector. Residues present in the sample, but not in the model, are shown in grey.

- Molecule 1: Enoyl-[acyl-carrier-protein] reductase [NADH]

Chain A:  %



## 4 Data and refinement statistics i

Property	Value	Source
Space group	P 62 2 2	Depositor
Cell constants a, b, c, $\alpha$ , $\beta$ , $\gamma$	97.43Å 97.43Å 139.75Å 90.00° 90.00° 120.00°	Depositor
Resolution (Å)	40.00 – 1.40 48.72 – 1.40	Depositor EDS
% Data completeness (in resolution range)	99.6 (40.00-1.40) 99.6 (48.72-1.40)	Depositor EDS
$R_{merge}$	(Not available)	Depositor
$R_{sym}$	0.06	Depositor
$\langle I/\sigma(I) \rangle$ <sup>1</sup>	2.38 (at 1.40Å)	Xtrriage
Refinement program	REFMAC 5.8.0071	Depositor
R, $R_{free}$	0.121 , 0.151 0.124 , 0.154	Depositor DCC
$R_{free}$ test set	3859 reflections (5.01%)	wwPDB-VP
Wilson B-factor (Å <sup>2</sup> )	19.7	Xtrriage
Anisotropy	0.514	Xtrriage
Bulk solvent $k_{sol}$ (e/Å <sup>3</sup> ), $B_{sol}$ (Å <sup>2</sup> )	0.33 , 49.5	EDS
L-test for twinning <sup>2</sup>	$\langle  L  \rangle = 0.49$ , $\langle L^2 \rangle = 0.33$	Xtrriage
Estimated twinning fraction	No twinning to report.	Xtrriage
$F_o, F_c$ correlation	0.98	EDS
Total number of atoms	2489	wwPDB-VP
Average B, all atoms (Å <sup>2</sup> )	32.0	wwPDB-VP

Xtrriage's analysis on translational NCS is as follows: *The largest off-origin peak in the Patterson function is 4.26% of the height of the origin peak. No significant pseudotranslation is detected.*

<sup>1</sup>Intensities estimated from amplitudes.

<sup>2</sup>Theoretical values of  $\langle |L| \rangle$ ,  $\langle L^2 \rangle$  for acentric reflections are 0.5, 0.333 respectively for untwinned datasets, and 0.375, 0.2 for perfectly twinned datasets.



## 5 Model quality [i](#)

### 5.1 Standard geometry [i](#)

Bond lengths and bond angles in the following residue types are not validated in this section: ZID, NA, EPE, NAD, DMS

The Z score for a bond length (or angle) is the number of standard deviations the observed value is removed from the expected value. A bond length (or angle) with  $|Z| > 5$  is considered an outlier worth inspection. RMSZ is the root-mean-square of all Z scores of the bond lengths (or angles).

Mol	Chain	Bond lengths		Bond angles	
		RMSZ	# Z  >5	RMSZ	# Z  >5
1	A	1.05	8/2121 (0.4%)	0.95	12/2877 (0.4%)

All (8) bond length outliers are listed below:

Mol	Chain	Res	Type	Atoms	Z	Observed(Å)	Ideal(Å)
1	A	210	GLU	CB-CG	-10.83	1.31	1.52
1	A	209	GLU	CD-OE2	-10.60	1.14	1.25
1	A	129	SER	CB-OG	-7.80	1.32	1.42
1	A	210	GLU	CD-OE2	6.09	1.32	1.25
1	A	220	GLU	CD-OE2	5.25	1.31	1.25
1	A	3	GLY	N-CA	-5.24	1.38	1.46
1	A	178	GLU	CD-OE1	5.18	1.31	1.25
1	A	174	PHE	CE2-CZ	-5.17	1.27	1.37

All (12) bond angle outliers are listed below:

Mol	Chain	Res	Type	Atoms	Z	Observed(°)	Ideal(°)
1	A	153[A]	ARG	NE-CZ-NH2	-6.32	117.14	120.30
1	A	153[B]	ARG	NE-CZ-NH2	-6.32	117.14	120.30
1	A	149[A]	PHE	N-CA-C	-6.14	94.43	111.00
1	A	149[B]	PHE	N-CA-C	-6.14	94.43	111.00
1	A	68	GLU	OE1-CD-OE2	-5.97	116.13	123.30
1	A	9	ARG	NE-CZ-NH1	5.96	123.28	120.30
1	A	18[A]	ASP	CB-CG-OD1	5.65	123.39	118.30
1	A	18[B]	ASP	CB-CG-OD1	5.65	123.39	118.30
1	A	223	ASP	CB-CG-OD1	5.55	123.29	118.30
1	A	210	GLU	OE1-CD-OE2	-5.41	116.80	123.30
1	A	9	ARG	NE-CZ-NH2	-5.26	117.67	120.30
1	A	269	LEU	CA-CB-CG	5.26	127.40	115.30

There are no chirality outliers.

There are no planarity outliers.

## 5.2 Too-close contacts

In the following table, the Non-H and H(model) columns list the number of non-hydrogen atoms and hydrogen atoms in the chain respectively. The H(added) column lists the number of hydrogen atoms added and optimized by MolProbity. The Clashes column lists the number of clashes within the asymmetric unit, whereas Symm-Clashes lists symmetry-related clashes.

Mol	Chain	Non-H	H(model)	H(added)	Clashes	Symm-Clashes
1	A	2082	0	2081	27	0
2	A	44	0	26	2	0
3	A	52	0	29	3	0
4	A	27	0	30	11	0
5	A	16	0	24	6	0
6	A	2	0	0	0	0
7	A	266	0	0	1	0
All	All	2489	0	2190	30	0

The all-atom clashscore is defined as the number of clashes found per 1000 atoms (including hydrogen atoms). The all-atom clashscore for this structure is 7.

All (30) close contacts within the same asymmetric unit are listed below, sorted by their clash magnitude.

Atom-1	Atom-2	Interatomic distance (Å)	Clash overlap (Å)
4:A:304:EPE:H22	7:A:407:HOH:O	1.68	0.91
1:A:24:HIS:HD2	1:A:27[A]:ARG:HH21	1.20	0.86
1:A:234:ASP:HA	4:A:304:EPE:H62	1.62	0.80
1:A:235:ALA:H	4:A:304:EPE:C6	1.97	0.77
1:A:24:HIS:CD2	1:A:27[B]:ARG:HH12	2.06	0.73
1:A:24:HIS:HD2	1:A:27[B]:ARG:HH12	1.37	0.71
1:A:132:LYS:NZ	5:A:308:DMS:C1	2.54	0.70
1:A:132:LYS:NZ	5:A:308:DMS:H13	2.11	0.65
1:A:235:ALA:H	4:A:304:EPE:H62	1.64	0.62
1:A:132:LYS:NZ	5:A:308:DMS:H12	2.15	0.61
1:A:269:LEU:HD23	1:A:269:LEU:OXT	2.01	0.61
1:A:132:LYS:HZ3	5:A:308:DMS:C1	2.13	0.61
1:A:24:HIS:CD2	1:A:27[A]:ARG:HH21	2.11	0.59
1:A:225:ARG:HH11	1:A:225:ARG:HG3	1.71	0.56
1:A:194:ILE:H	2:A:301[A]:NAD:H72N	1.56	0.53
1:A:235:ALA:HB2	4:A:304:EPE:H92	1.91	0.52

*Continued on next page...*

Continued from previous page...

Atom-1	Atom-2	Interatomic distance (Å)	Clash overlap (Å)
1:A:235:ALA:N	4:A:304:EPE:H62	2.25	0.51
1:A:196:THR:HA	4:A:304:EPE:O3S	2.10	0.51
3:A:302[B]:ZID:H2N	3:A:302[B]:ZID:O2N	2.10	0.51
1:A:132:LYS:HZ2	5:A:308:DMS:H13	1.77	0.50
3:A:302[B]:ZID:H71N	3:A:302[B]:ZID:C7Z	2.24	0.50
1:A:100:GLN:HG2	1:A:207:LEU:HD21	1.95	0.49
1:A:235:ALA:N	4:A:304:EPE:H92	2.27	0.49
1:A:235:ALA:H	4:A:304:EPE:H92	1.79	0.47
1:A:132:LYS:HZ3	5:A:308:DMS:H13	1.77	0.47
1:A:149[B]:PHE:HB3	3:A:302[B]:ZID:H5N	1.97	0.46
1:A:235:ALA:CB	4:A:304:EPE:H92	2.45	0.46
1:A:155[B]:MET:HB2	1:A:156:PRO:HD2	2.00	0.43
1:A:196:THR:HG21	2:A:301[A]:NAD:O2N	2.21	0.41
1:A:235:ALA:N	4:A:304:EPE:C6	2.75	0.40

There are no symmetry-related clashes.

## 5.3 Torsion angles [i](#)

### 5.3.1 Protein backbone [i](#)

In the following table, the Percentiles column shows the percent Ramachandran outliers of the chain as a percentile score with respect to all X-ray entries followed by that with respect to entries of similar resolution.

The Analysed column shows the number of residues for which the backbone conformation was analysed, and the total number of residues.

Mol	Chain	Analysed	Favoured	Allowed	Outliers	Percentiles
1	A	276/269 (103%)	268 (97%)	8 (3%)	0	<b>100</b>   <b>100</b>

There are no Ramachandran outliers to report.

### 5.3.2 Protein sidechains [i](#)

In the following table, the Percentiles column shows the percent sidechain outliers of the chain as a percentile score with respect to all X-ray entries followed by that with respect to entries of similar resolution.

The Analysed column shows the number of residues for which the sidechain conformation was analysed, and the total number of residues.

Mol	Chain	Analysed	Rotameric	Outliers	Percentiles
1	A	213/205 (104%)	211 (99%)	2 (1%)	78 58

All (2) residues with a non-rotameric sidechain are listed below:

Mol	Chain	Res	Type
1	A	6[A]	ASP
1	A	6[B]	ASP

Sometimes sidechains can be flipped to improve hydrogen bonding and reduce clashes. All (2) such sidechains are listed below:

Mol	Chain	Res	Type
1	A	24	HIS
1	A	139	ASN

### 5.3.3 RNA [i](#)

There are no RNA molecules in this entry.

## 5.4 Non-standard residues in protein, DNA, RNA chains [i](#)

There are no non-standard protein/DNA/RNA residues in this entry.

## 5.5 Carbohydrates [i](#)

There are no monosaccharides in this entry.

## 5.6 Ligand geometry [i](#)

Of 10 ligands modelled in this entry, 2 are monoatomic - leaving 8 for Mogul analysis.

In the following table, the Counts columns list the number of bonds (or angles) for which Mogul statistics could be retrieved, the number of bonds (or angles) that are observed in the model and the number of bonds (or angles) that are defined in the Chemical Component Dictionary. The Link column lists molecule types, if any, to which the group is linked. The Z score for a bond length (or angle) is the number of standard deviations the observed value is removed from the expected value. A bond length (or angle) with  $|Z| > 2$  is considered an outlier worth inspection. RMSZ is the root-mean-square of all Z scores of the bond lengths (or angles).

Mol	Type	Chain	Res	Link	Bond lengths			Bond angles		
					Counts	RMSZ	# Z  > 2	Counts	RMSZ	# Z  > 2
4	EPE	A	303	-	15,15,15	1.64	3 (20%)	18,20,20	3.01	9 (50%)
5	DMS	A	308	-	3,3,3	0.61	0	3,3,3	0.94	0
2	NAD	A	301[A]	-	42,48,48	1.16	4 (9%)	50,73,73	1.48	9 (18%)
5	DMS	A	307	-	3,3,3	0.79	0	3,3,3	0.85	0
4	EPE	A	304	-	12,12,15	2.65	3 (25%)	14,16,20	4.18	7 (50%)
5	DMS	A	306	-	3,3,3	1.38	1 (33%)	3,3,3	1.48	1 (33%)
3	ZID	A	302[B]	-	51,57,57	1.65	4 (7%)	61,86,86	2.05	7 (11%)
5	DMS	A	305	-	3,3,3	0.51	0	3,3,3	1.04	0

In the following table, the Chirals column lists the number of chiral outliers, the number of chiral centers analysed, the number of these observed in the model and the number defined in the Chemical Component Dictionary. Similar counts are reported in the Torsion and Rings columns. '-' means no outliers of that kind were identified.

Mol	Type	Chain	Res	Link	Chirals	Torsions	Rings
4	EPE	A	303	-	-	3/9/19/19	0/1/1/1
4	EPE	A	304	-	-	5/6/14/19	0/1/1/1
3	ZID	A	302[B]	-	-	8/34/70/70	0/6/6/6
2	NAD	A	301[A]	-	-	8/26/62/62	0/5/5/5

All (15) bond length outliers are listed below:

Mol	Chain	Res	Type	Atoms	Z	Observed(Å)	Ideal(Å)
4	A	304	EPE	C10-S	-7.40	1.67	1.77
3	A	302[B]	ZID	O7Z-C7Z	6.34	1.34	1.22
3	A	302[B]	ZID	C4N-C3N	5.90	1.50	1.40
3	A	302[B]	ZID	C4N-C7Z	4.53	1.59	1.50
4	A	303	EPE	O2S-S	4.45	1.58	1.45
3	A	302[B]	ZID	O7N-C7N	4.15	1.32	1.24
2	A	301[A]	NAD	O7N-C7N	3.64	1.31	1.24
4	A	304	EPE	C9-C10	3.36	1.61	1.52
4	A	303	EPE	C10-S	-3.23	1.72	1.77
4	A	304	EPE	O1S-S	3.03	1.54	1.45
4	A	303	EPE	O1S-S	2.45	1.52	1.45
2	A	301[A]	NAD	C5A-C4A	2.44	1.47	1.40
2	A	301[A]	NAD	C4N-C3N	2.37	1.43	1.39
2	A	301[A]	NAD	O4D-C1D	2.12	1.44	1.41
5	A	306	DMS	O-S	2.10	1.64	1.50

All (33) bond angle outliers are listed below:

Mol	Chain	Res	Type	Atoms	Z	Observed(°)	Ideal(°)
3	A	302[B]	ZID	C3N-C4N-C7Z	-10.07	105.61	122.88
4	A	304	EPE	C9-N1-C6	8.94	134.09	111.23
4	A	304	EPE	C3-C2-N1	8.67	123.37	110.94
3	A	302[B]	ZID	C5N-C4N-C7Z	-6.62	103.98	118.71
4	A	303	EPE	C5-N4-C3	6.32	123.06	108.83
4	A	303	EPE	C6-N1-C2	5.52	121.26	108.83
3	A	302[B]	ZID	C5N-C4N-C3N	-5.18	113.51	119.26
4	A	304	EPE	O2S-S-C10	-4.82	101.11	106.92
4	A	303	EPE	O2S-S-C10	-4.30	101.74	106.92
4	A	303	EPE	O3S-S-C10	4.22	112.59	105.77
4	A	304	EPE	C5-C6-N1	3.96	116.63	110.94
3	A	302[B]	ZID	PN-O3-PA	3.96	146.42	132.83
2	A	301[A]	NAD	C3N-C7N-N7N	-3.94	113.02	117.75
4	A	304	EPE	O2S-S-O1S	-3.87	100.56	113.95
4	A	303	EPE	O1S-S-C10	3.85	111.55	106.92
3	A	302[B]	ZID	C2N-C3N-C4N	3.83	121.53	118.48
4	A	304	EPE	O3S-S-O2S	3.81	120.59	111.27
4	A	303	EPE	C6-C5-N4	3.79	118.41	110.64
2	A	301[A]	NAD	O7N-C7N-C3N	3.53	123.85	119.63
4	A	303	EPE	C7-N4-C3	3.32	119.74	111.23
2	A	301[A]	NAD	PN-O3-PA	-3.23	121.73	132.83
4	A	304	EPE	C5-N4-C3	-2.93	101.92	110.34
2	A	301[A]	NAD	O4B-C1B-C2B	-2.89	102.71	106.93
2	A	301[A]	NAD	N3A-C2A-N1A	-2.70	124.47	128.68
2	A	301[A]	NAD	C2A-N1A-C6A	2.68	123.34	118.75
5	A	306	DMS	C2-S-C1	2.54	111.50	98.44
3	A	302[B]	ZID	C3N-C7N-N7N	-2.46	114.51	118.29
3	A	302[B]	ZID	C5A-C6A-N6A	2.40	124.00	120.35
2	A	301[A]	NAD	C6N-C5N-C4N	-2.20	116.24	119.44
4	A	303	EPE	C9-N1-C6	2.11	116.63	111.23
2	A	301[A]	NAD	C4A-C5A-N7A	-2.10	107.21	109.40
4	A	303	EPE	O3S-S-O1S	-2.10	106.14	111.27
2	A	301[A]	NAD	O3D-C3D-C2D	-2.10	105.04	111.82

There are no chirality outliers.

All (24) torsion outliers are listed below:

Mol	Chain	Res	Type	Atoms
2	A	301[A]	NAD	C5B-O5B-PA-O1A
2	A	301[A]	NAD	C5D-O5D-PN-O1N
2	A	301[A]	NAD	O4D-C1D-N1N-C2N
2	A	301[A]	NAD	O4D-C1D-N1N-C6N
2	A	301[A]	NAD	C2D-C1D-N1N-C6N

*Continued on next page...*

*Continued from previous page...*

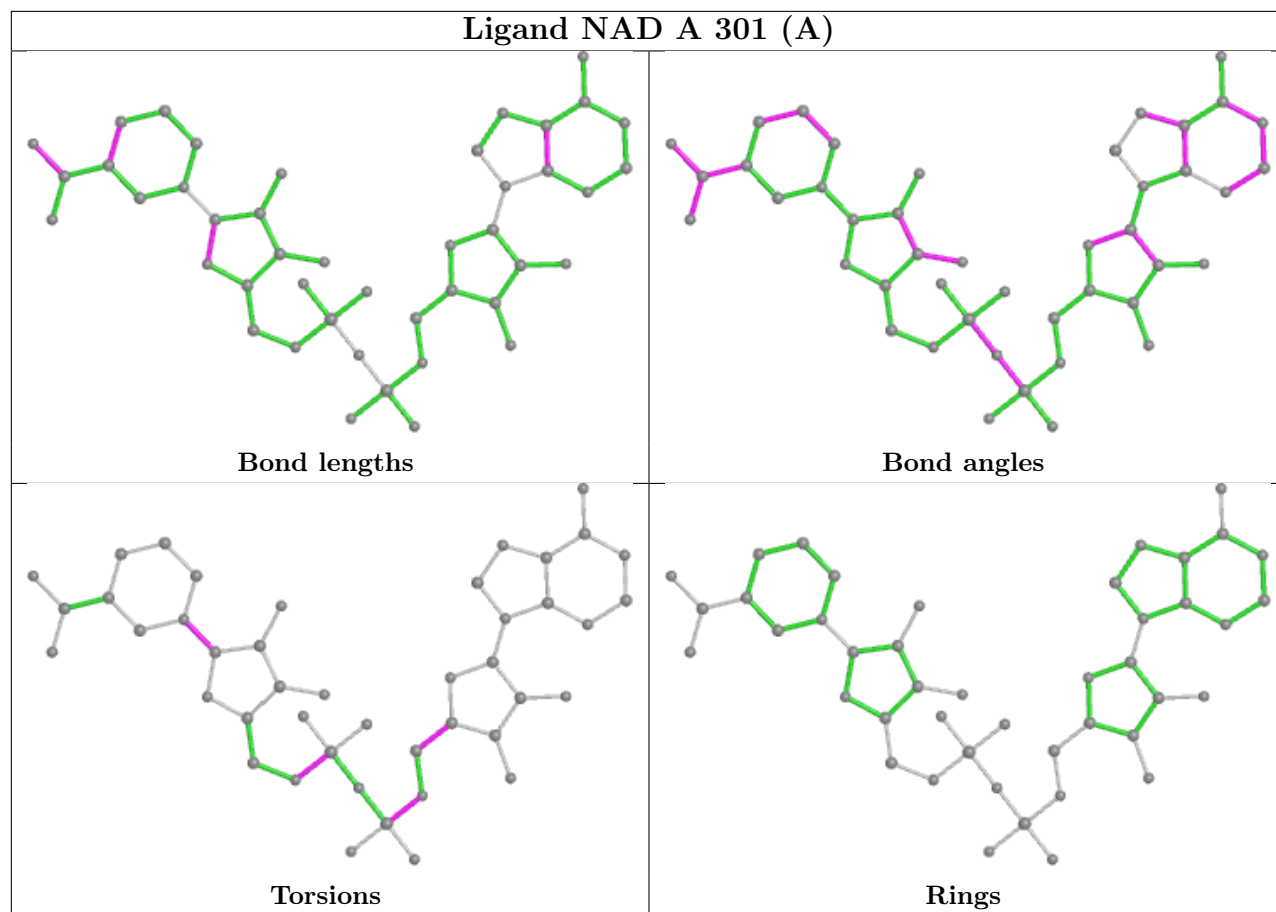
Mol	Chain	Res	Type	Atoms
3	A	302[B]	ZID	C5D-O5D-PN-O3
3	A	302[B]	ZID	C5D-O5D-PN-O1N
3	A	302[B]	ZID	C5D-O5D-PN-O2N
3	A	302[B]	ZID	O4D-C1D-N1N-C2N
3	A	302[B]	ZID	C4N-C3N-C7N-O7N
3	A	302[B]	ZID	C4N-C3N-C7N-N7N
4	A	304	EPE	S-C10-C9-N1
4	A	304	EPE	C9-C10-S-O3S
4	A	303	EPE	C8-C7-N4-C3
4	A	304	EPE	C10-C9-N1-C6
3	A	302[B]	ZID	PN-O3-PA-O5B
2	A	301[A]	NAD	C5D-O5D-PN-O2N
4	A	304	EPE	C9-C10-S-O1S
4	A	304	EPE	C9-C10-S-O2S
4	A	303	EPE	N4-C7-C8-O8
2	A	301[A]	NAD	C5D-O5D-PN-O3
3	A	302[B]	ZID	O4B-C4B-C5B-O5B
2	A	301[A]	NAD	O4B-C4B-C5B-O5B
4	A	303	EPE	C10-C9-N1-C2

There are no ring outliers.

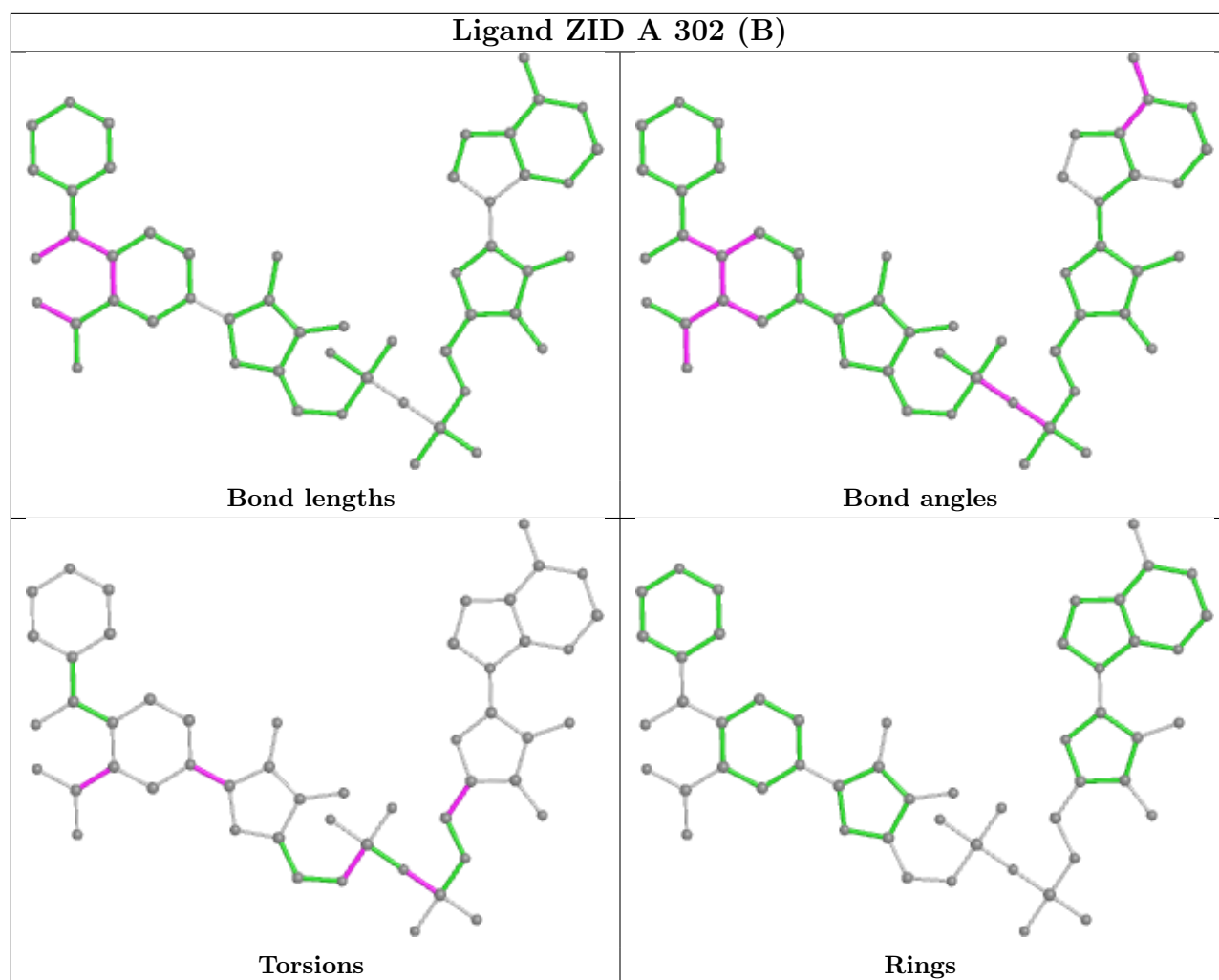
4 monomers are involved in 22 short contacts:

Mol	Chain	Res	Type	Clashes	Symm-Clashes
5	A	308	DMS	6	0
2	A	301[A]	NAD	2	0
4	A	304	EPE	11	0
3	A	302[B]	ZID	3	0

The following is a two-dimensional graphical depiction of Mogul quality analysis of bond lengths, bond angles, torsion angles, and ring geometry for all instances of the Ligand of Interest. In addition, ligands with molecular weight > 250 and outliers as shown on the validation Tables will also be included. For torsion angles, if less than 5% of the Mogul distribution of torsion angles is within 10 degrees of the torsion angle in question, then that torsion angle is considered an outlier. Any bond that is central to one or more torsion angles identified as an outlier by Mogul will be highlighted in the graph. For rings, the root-mean-square deviation (RMSD) between the ring in question and similar rings identified by Mogul is calculated over all ring torsion angles. If the average RMSD is greater than 60 degrees and the minimal RMSD between the ring in question and any Mogul-identified rings is also greater than 60 degrees, then that ring is considered an outlier. The outliers are highlighted in purple. The color gray indicates Mogul did not find sufficient equivalents in the CSD to analyse the geometry.







## 5.7 Other polymers [\(i\)](#)

There are no such residues in this entry.

## 5.8 Polymer linkage issues [\(i\)](#)

There are no chain breaks in this entry.

## 6 Fit of model and data [i](#)

### 6.1 Protein, DNA and RNA chains [i](#)

In the following table, the column labelled '#RSRZ > 2' contains the number (and percentage) of RSRZ outliers, followed by percent RSRZ outliers for the chain as percentile scores relative to all X-ray entries and entries of similar resolution. The OWAB column contains the minimum, median, 95<sup>th</sup> percentile and maximum values of the occupancy-weighted average B-factor per residue. The column labelled 'Q < 0.9' lists the number of (and percentage) of residues with an average occupancy less than 0.9.

Mol	Chain	Analysed	<RSRZ>	#RSRZ>2	OWAB(Å <sup>2</sup> )	Q<0.9
1	A	268/269 (99%)	-0.26	3 (1%) 80 79	18, 26, 56, 117	0

All (3) RSRZ outliers are listed below:

Mol	Chain	Res	Type	RSRZ
1	A	149[A]	PHE	3.2
1	A	105	ILE	3.0
1	A	153[A]	ARG	2.0

### 6.2 Non-standard residues in protein, DNA, RNA chains [i](#)

There are no non-standard protein/DNA/RNA residues in this entry.

### 6.3 Carbohydrates [i](#)

There are no monosaccharides in this entry.

### 6.4 Ligands [i](#)

In the following table, the Atoms column lists the number of modelled atoms in the group and the number defined in the chemical component dictionary. The B-factors column lists the minimum, median, 95<sup>th</sup> percentile and maximum values of B factors of atoms in the group. The column labelled 'Q < 0.9' lists the number of atoms with occupancy less than 0.9.

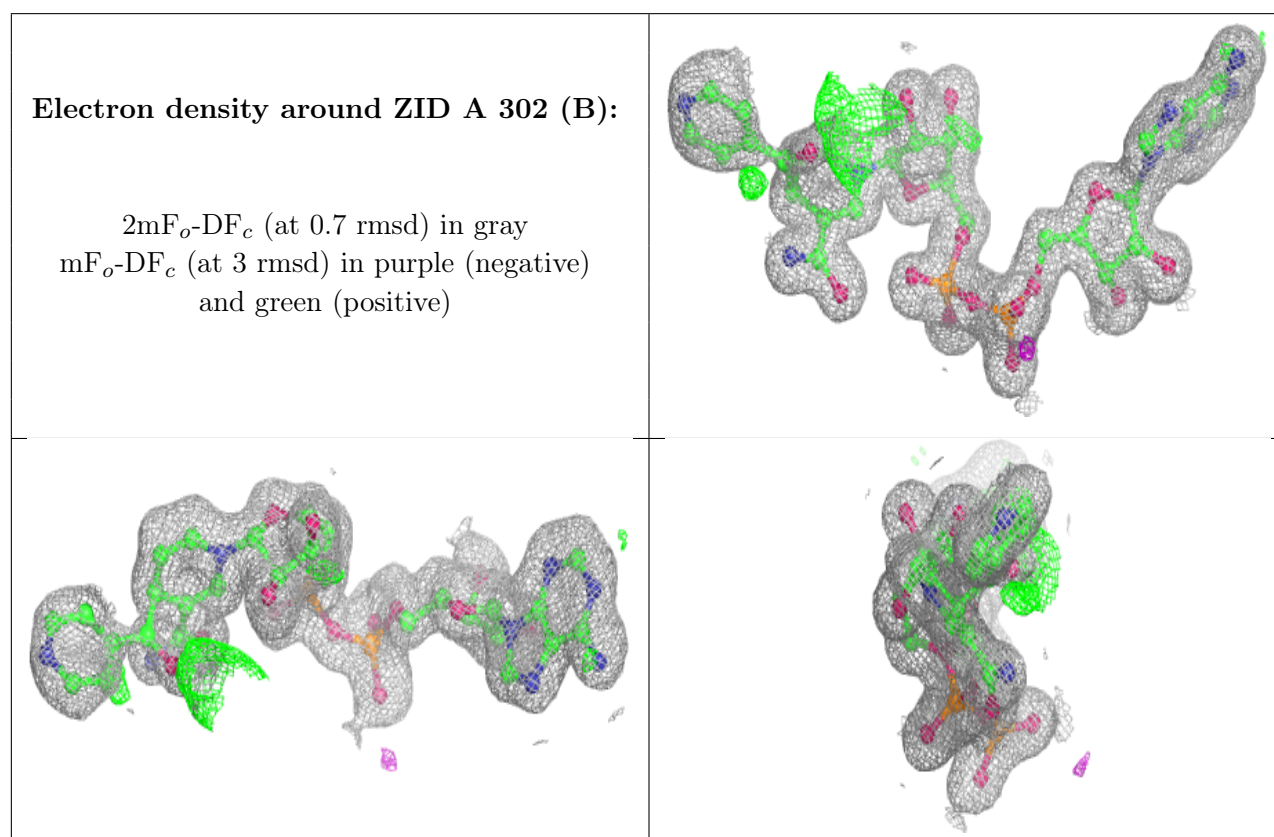
Mol	Type	Chain	Res	Atoms	RSCC	RSR	B-factors(Å <sup>2</sup> )	Q<0.9
4	EPE	A	304	12/15	0.88	0.28	22,41,79,80	12
5	DMS	A	307	4/4	0.90	0.17	38,91,119,196	0
4	EPE	A	303	15/15	0.91	0.20	56,82,165,172	0
5	DMS	A	306	4/4	0.93	0.15	51,59,60,66	0

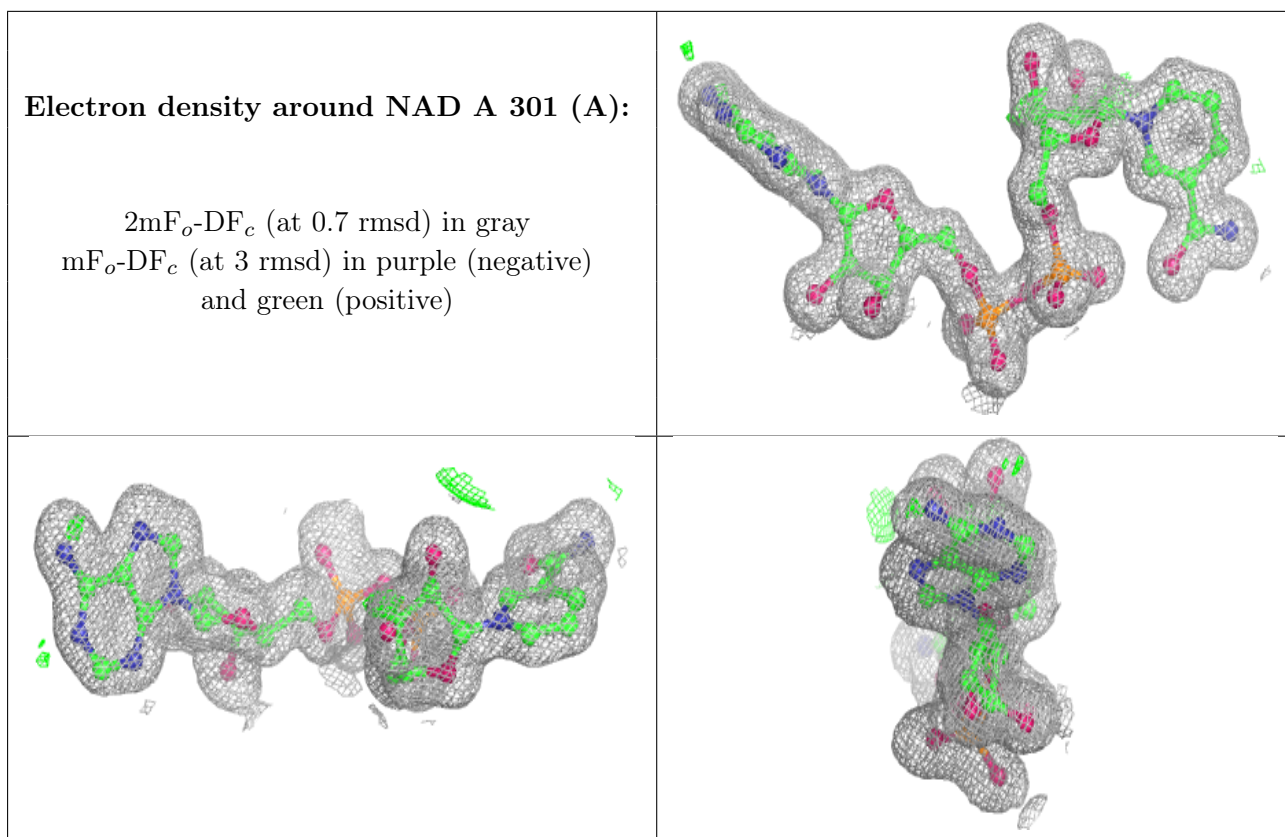
*Continued on next page...*

Continued from previous page...

Mol	Type	Chain	Res	Atoms	RSCC	RSR	B-factors( $\text{\AA}^2$ )	Q<0.9
5	DMS	A	308	4/4	0.94	0.20	52,73,81,155	0
5	DMS	A	305	4/4	0.98	0.11	36,48,58,103	0
3	ZID	A	302[B]	52/52	0.98	0.07	16,21,26,33	52
6	NA	A	310	1/1	0.98	0.34	54,54,54,54	0
6	NA	A	309	1/1	0.99	0.09	31,31,31,31	0
2	NAD	A	301[A]	44/44	0.99	0.06	14,19,22,24	44

The following is a graphical depiction of the model fit to experimental electron density of all instances of the Ligand of Interest. In addition, ligands with molecular weight > 250 and outliers as shown on the geometry validation Tables will also be included. Each fit is shown from different orientation to approximate a three-dimensional view.





## 6.5 Other polymers [i](#)

There are no such residues in this entry.