



Full wwPDB X-ray Structure Validation Report ⓘ

Sep 13, 2020 – 06:04 PM BST

PDB ID : 4Q2T
Title : Crystal structure of Arginyl-tRNA synthetase complexed with L-arginine
Authors : Kim, H.S.; Jo, C.H.; Cha, S.Y.; Han, A.R.; Hwang, K.Y.
Deposited on : 2014-04-09
Resolution : 2.40 Å(reported)

This is a Full wwPDB X-ray Structure Validation Report for a publicly released PDB entry.

We welcome your comments at validation@mail.wwpdb.org

A user guide is available at

<https://www.wwpdb.org/validation/2017/XrayValidationReportHelp>

with specific help available everywhere you see the ⓘ symbol.

The following versions of software and data (see [references ⓘ](#)) were used in the production of this report:

MolProbity : 4.02b-467
Mogul : 1.8.5 (274361), CSD as541be (2020)
Xtriage (Phenix) : 1.13
EDS : 2.14.4.dev1
Percentile statistics : 20191225.v01 (using entries in the PDB archive December 25th 2019)
Refmac : 5.8.0158
CCP4 : 7.0.044 (Gargrove)
Ideal geometry (proteins) : Engh & Huber (2001)
Ideal geometry (DNA, RNA) : Parkinson et al. (1996)
Validation Pipeline (wwPDB-VP) : 2.14.4.dev1

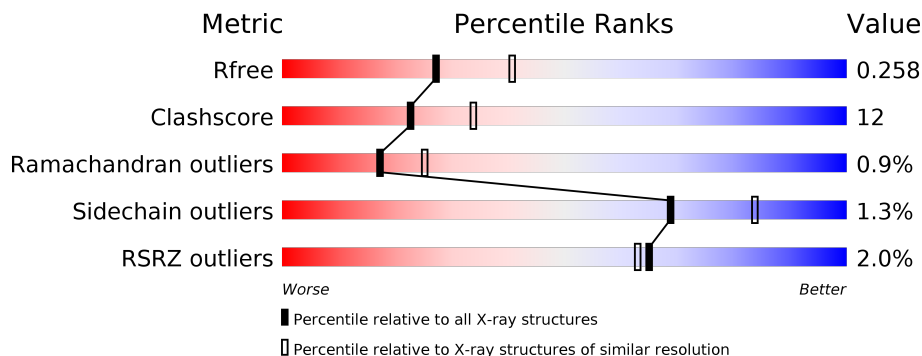
1 Overall quality at a glance

The following experimental techniques were used to determine the structure:

X-RAY DIFFRACTION

The reported resolution of this entry is 2.40 Å.

Percentile scores (ranging between 0-100) for global validation metrics of the entry are shown in the following graphic. The table shows the number of entries on which the scores are based.



Metric	Whole archive (#Entries)	Similar resolution (#Entries, resolution range(Å))
R_{free}	130704	3907 (2.40-2.40)
Clashscore	141614	4398 (2.40-2.40)
Ramachandran outliers	138981	4318 (2.40-2.40)
Sidechain outliers	138945	4319 (2.40-2.40)
RSRZ outliers	127900	3811 (2.40-2.40)

The table below summarises the geometric issues observed across the polymeric chains and their fit to the electron density. The red, orange, yellow and green segments on the lower bar indicate the fraction of residues that contain outliers for ≥ 3 , 2, 1 and 0 types of geometric quality criteria respectively. A grey segment represents the fraction of residues that are not modelled. The numeric value for each fraction is indicated below the corresponding segment, with a dot representing fractions $\leq 5\%$. The upper red bar (where present) indicates the fraction of residues that have poor fit to the electron density. The numeric value is given above the bar.

Mol	Chain	Length	Quality of chain
1	A	607	<p>0% (poor fit), 73% (0-1 outliers), 23% (2-3 outliers), 2% (4+ outliers), 2% (not modelled)</p>
1	B	607	<p>2% (poor fit), 74% (0-1 outliers), 22% (2-3 outliers), 2% (4+ outliers), 2% (not modelled)</p>

2 Entry composition [i](#)

There are 4 unique types of molecules in this entry. The entry contains 9781 atoms, of which 16 are hydrogens and 0 are deuteriums.

In the tables below, the ZeroOcc column contains the number of atoms modelled with zero occupancy, the AltConf column contains the number of residues with at least one atom in alternate conformation and the Trace column contains the number of residues modelled with at most 2 atoms.

- Molecule 1 is a protein called Arginine–tRNA ligase, cytoplasmic.

Mol	Chain	Residues	Atoms					ZeroOcc	AltConf	Trace
			Total	C	N	O	S			
1	A	590	4732	3023	804	878	27	0	0	0
1	B	588	4722	3018	802	875	27	0	0	0

There are 40 discrepancies between the modelled and reference sequences:

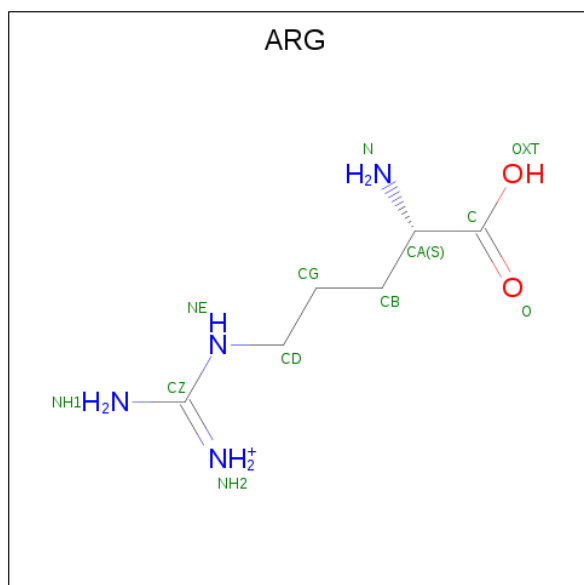
Chain	Residue	Modelled	Actual	Comment	Reference
A	-18	HIS	-	EXPRESSION TAG	UNP P54136
A	-17	HIS	-	EXPRESSION TAG	UNP P54136
A	-16	HIS	-	EXPRESSION TAG	UNP P54136
A	-15	HIS	-	EXPRESSION TAG	UNP P54136
A	-14	HIS	-	EXPRESSION TAG	UNP P54136
A	-13	HIS	-	EXPRESSION TAG	UNP P54136
A	-12	SER	-	EXPRESSION TAG	UNP P54136
A	-11	SER	-	EXPRESSION TAG	UNP P54136
A	-10	GLY	-	EXPRESSION TAG	UNP P54136
A	-9	LEU	-	EXPRESSION TAG	UNP P54136
A	-8	VAL	-	EXPRESSION TAG	UNP P54136
A	-7	PRO	-	EXPRESSION TAG	UNP P54136
A	-6	ARG	-	EXPRESSION TAG	UNP P54136
A	-5	GLY	-	EXPRESSION TAG	UNP P54136
A	-4	SER	-	EXPRESSION TAG	UNP P54136
A	-3	HIS	-	EXPRESSION TAG	UNP P54136
A	-2	MET	-	EXPRESSION TAG	UNP P54136
A	-1	ALA	-	EXPRESSION TAG	UNP P54136
A	0	SER	-	EXPRESSION TAG	UNP P54136
A	438	ARG	HIS	ENGINEERED MUTATION	UNP P54136
B	-18	HIS	-	EXPRESSION TAG	UNP P54136
B	-17	HIS	-	EXPRESSION TAG	UNP P54136
B	-16	HIS	-	EXPRESSION TAG	UNP P54136
B	-15	HIS	-	EXPRESSION TAG	UNP P54136
B	-14	HIS	-	EXPRESSION TAG	UNP P54136

Continued on next page...

Continued from previous page...

Chain	Residue	Modelled	Actual	Comment	Reference
B	-13	HIS	-	EXPRESSION TAG	UNP P54136
B	-12	SER	-	EXPRESSION TAG	UNP P54136
B	-11	SER	-	EXPRESSION TAG	UNP P54136
B	-10	GLY	-	EXPRESSION TAG	UNP P54136
B	-9	LEU	-	EXPRESSION TAG	UNP P54136
B	-8	VAL	-	EXPRESSION TAG	UNP P54136
B	-7	PRO	-	EXPRESSION TAG	UNP P54136
B	-6	ARG	-	EXPRESSION TAG	UNP P54136
B	-5	GLY	-	EXPRESSION TAG	UNP P54136
B	-4	SER	-	EXPRESSION TAG	UNP P54136
B	-3	HIS	-	EXPRESSION TAG	UNP P54136
B	-2	MET	-	EXPRESSION TAG	UNP P54136
B	-1	ALA	-	EXPRESSION TAG	UNP P54136
B	0	SER	-	EXPRESSION TAG	UNP P54136
B	438	ARG	HIS	ENGINEERED MUTATION	UNP P54136

- Molecule 2 is ARGinine (three-letter code: ARG) (formula: $C_6H_{15}N_4O_2$).



Mol	Chain	Residues	Atoms				ZeroOcc	AltConf
2	A	1	Total	C	N	O	0	0
			12	6	4	2		
2	B	1	Total	C	N	O	0	0
			12	6	4	2		

- Molecule 3 is GLYCEROL (three-letter code: GOL) (formula: $C_3H_8O_3$).



Mol	Chain	Residues	Atoms			ZeroOcc	AltConf	
			Total	C	H			O
3	A	1	14	3	8	3	0	0
3	B	1	14	3	8	3	0	0

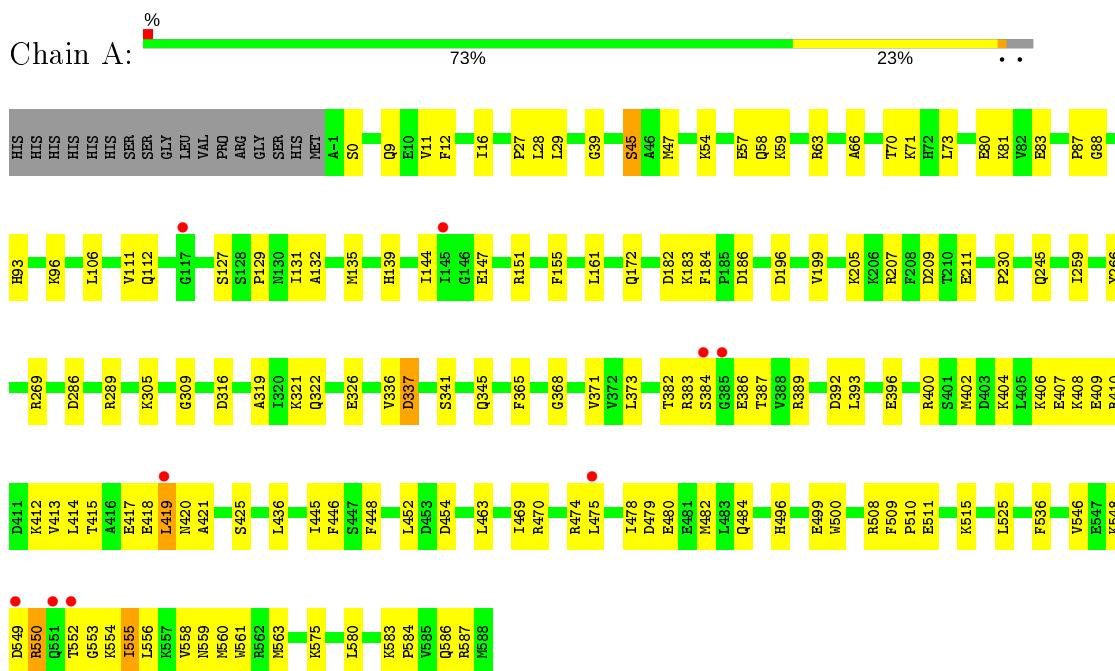
- Molecule 4 is water.

Mol	Chain	Residues	Atoms		ZeroOcc	AltConf
			Total	O		
4	A	147	147	147	0	0
4	B	128	128	128	0	0

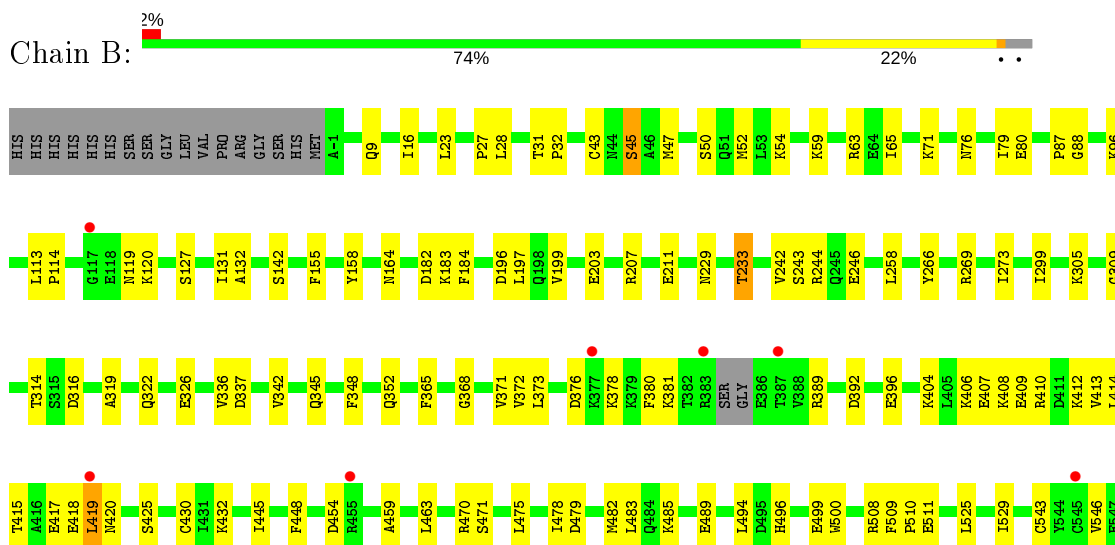
3 Residue-property plots

These plots are drawn for all protein, RNA, DNA and oligosaccharide chains in the entry. The first graphic for a chain summarises the proportions of the various outlier classes displayed in the second graphic. The second graphic shows the sequence view annotated by issues in geometry and electron density. Residues are color-coded according to the number of geometric quality criteria for which they contain at least one outlier: green = 0, yellow = 1, orange = 2 and red = 3 or more. A red dot above a residue indicates a poor fit to the electron density ($RSRZ > 2$). Stretches of 2 or more consecutive residues without any outlier are shown as a green connector. Residues present in the sample, but not in the model, are shown in grey.

- Molecule 1: Arginine-tRNA ligase, cytoplasmic



- Molecule 1: Arginine-tRNA ligase, cytoplasmic





4 Data and refinement statistics

Property	Value	Source
Space group	P 21 21 21	Depositor
Cell constants a, b, c, α , β , γ	74.48Å 106.90Å 175.25Å 90.00° 90.00° 90.00°	Depositor
Resolution (Å)	38.91 – 2.40 38.91 – 2.38	Depositor EDS
% Data completeness (in resolution range)	97.8 (38.91-2.40) 96.6 (38.91-2.38)	Depositor EDS
R_{merge}	0.07	Depositor
R_{sym}	(Not available)	Depositor
$\langle I/\sigma(I) \rangle$ ¹	2.01 (at 2.37Å)	Xtrriage
Refinement program	PHENIX 1.8.2_1309	Depositor
R, R_{free}	0.196 , 0.258 0.196 , 0.258	Depositor DCC
R_{free} test set	2000 reflections (3.63%)	wwPDB-VP
Wilson B-factor (Å ²)	42.9	Xtrriage
Anisotropy	0.530	Xtrriage
Bulk solvent k_{sol} (e/Å ³), B_{sol} (Å ²)	0.32 , 39.5	EDS
L-test for twinning ²	$\langle L \rangle = 0.47$, $\langle L^2 \rangle = 0.30$	Xtrriage
Estimated twinning fraction	No twinning to report.	Xtrriage
F_o, F_c correlation	0.96	EDS
Total number of atoms	9781	wwPDB-VP
Average B, all atoms (Å ²)	47.0	wwPDB-VP

Xtrriage's analysis on translational NCS is as follows: *The analyses of the Patterson function reveals a significant off-origin peak that is 41.16 % of the origin peak, indicating pseudo-translational symmetry. The chance of finding a peak of this or larger height randomly in a structure without pseudo-translational symmetry is equal to 2.4606e-04. The detected translational NCS is most likely also responsible for the elevated intensity ratio.*

¹Intensities estimated from amplitudes.

²Theoretical values of $\langle |L| \rangle$, $\langle L^2 \rangle$ for acentric reflections are 0.5, 0.333 respectively for untwinned datasets, and 0.375, 0.2 for perfectly twinned datasets.

5 Model quality [i](#)

5.1 Standard geometry [i](#)

Bond lengths and bond angles in the following residue types are not validated in this section: GOL

The Z score for a bond length (or angle) is the number of standard deviations the observed value is removed from the expected value. A bond length (or angle) with $|Z| > 5$ is considered an outlier worth inspection. RMSZ is the root-mean-square of all Z scores of the bond lengths (or angles).

Mol	Chain	Bond lengths		Bond angles	
		RMSZ	# Z >5	RMSZ	# Z >5
1	A	0.47	0/4821	0.57	0/6497
1	B	0.47	0/4810	0.59	1/6481 (0.0%)
All	All	0.47	0/9631	0.58	1/12978 (0.0%)

There are no bond length outliers.

All (1) bond angle outliers are listed below:

Mol	Chain	Res	Type	Atoms	Z	Observed(°)	Ideal(°)
1	B	556	LEU	CA-CB-CG	5.62	128.22	115.30

There are no chirality outliers.

There are no planarity outliers.

5.2 Too-close contacts [i](#)

In the following table, the Non-H and H(model) columns list the number of non-hydrogen atoms and hydrogen atoms in the chain respectively. The H(added) column lists the number of hydrogen atoms added and optimized by MolProbity. The Clashes column lists the number of clashes within the asymmetric unit, whereas Symm-Clashes lists symmetry related clashes.

Mol	Chain	Non-H	H(model)	H(added)	Clashes	Symm-Clashes
1	A	4732	0	4775	110	0
1	B	4722	0	4766	110	0
2	A	12	0	12	0	0
2	B	12	0	12	0	0
3	A	6	8	8	0	0
3	B	6	8	8	2	0
4	A	147	0	0	7	0
4	B	128	0	0	6	0

Continued on next page...

Continued from previous page...

Mol	Chain	Non-H	H(model)	H(added)	Clashes	Symm-Clashes
All	All	9765	16	9581	220	0

The all-atom clashscore is defined as the number of clashes found per 1000 atoms (including hydrogen atoms). The all-atom clashscore for this structure is 12.

All (220) close contacts within the same asymmetric unit are listed below, sorted by their clash magnitude.

Atom-1	Atom-2	Interatomic distance (Å)	Clash overlap (Å)
1:B:525:LEU:HD23	1:B:580:LEU:HD21	1.51	0.93
1:B:425:SER:OG	1:B:583:LYS:O	1.92	0.87
1:B:396:GLU:HG2	1:B:448:PHE:CE2	2.11	0.85
1:A:552:THR:HG23	1:A:554:LYS:HG3	1.59	0.83
1:A:496:HIS:HB3	1:A:499:GLU:HG2	1.61	0.81
1:A:413:VAL:HG23	1:A:418:GLU:HB2	1.62	0.81
1:B:552:THR:O	1:B:554:LYS:N	2.15	0.80
1:B:555:ILE:O	1:B:556:LEU:HG	1.81	0.80
1:A:414:LEU:HG	1:A:417:GLU:OE1	1.82	0.80
1:B:404:LYS:NZ	1:B:454:ASP:OD1	2.15	0.79
1:A:555:ILE:O	1:A:556:LEU:HG	1.82	0.79
1:A:550:ARG:CZ	1:A:550:ARG:HB3	2.10	0.78
1:B:551:GLN:O	1:B:552:THR:HG22	1.83	0.78
1:A:404:LYS:NZ	1:A:454:ASP:OD1	2.17	0.78
1:A:413:VAL:CG2	1:A:418:GLU:HB2	2.16	0.76
1:B:80:GLU:OE1	4:B:795:HOH:O	2.04	0.75
1:A:373:LEU:HB2	1:A:445:ILE:HD13	1.69	0.74
1:B:418:GLU:O	1:B:420:ASN:N	2.21	0.74
1:A:418:GLU:O	1:A:420:ASN:N	2.21	0.74
1:A:396:GLU:HG2	1:A:448:PHE:CE2	2.23	0.74
1:A:406:LYS:HG2	1:A:410:ARG:HD2	1.70	0.74
1:A:96:LYS:HD3	1:A:500:TRP:CZ3	2.24	0.73
1:A:425:SER:OG	1:A:583:LYS:O	2.06	0.71
1:A:549:ASP:HB2	1:A:556:LEU:HD21	1.74	0.70
1:B:373:LEU:HB2	1:B:445:ILE:HD13	1.74	0.69
1:B:413:VAL:CG2	1:B:418:GLU:HB2	2.22	0.69
1:B:414:LEU:HG	1:B:417:GLU:OE1	1.92	0.69
1:B:525:LEU:HD23	1:B:580:LEU:CD2	2.23	0.67
1:A:550:ARG:O	1:A:553:GLY:N	2.28	0.66
1:A:182:ASP:OD2	1:A:207:ARG:NH2	2.29	0.66
1:B:229:ASN:O	1:B:233:THR:HG22	1.96	0.66
1:B:413:VAL:HG23	1:B:418:GLU:HB2	1.78	0.65
1:A:54:LYS:HG3	1:A:59:LYS:HD3	1.78	0.65

Continued on next page...

Continued from previous page...

Atom-1	Atom-2	Interatomic distance (Å)	Clash overlap (Å)
1:B:196:ASP:OD2	1:B:199:VAL:HG23	1.95	0.65
1:A:27:PRO:O	1:A:45:SER:HB2	1.96	0.65
1:B:496:HIS:HB3	1:B:499:GLU:HG2	1.80	0.63
1:B:155:PHE:CE1	1:B:575:LYS:HE2	2.34	0.63
1:A:144:ILE:HG22	1:A:436:LEU:HD21	1.81	0.63
1:A:469:ILE:HG12	1:A:536:PHE:CE2	2.34	0.62
1:A:525:LEU:HD23	1:A:580:LEU:HD21	1.81	0.62
1:A:558:VAL:CG1	1:A:560:MET:HE2	2.29	0.62
1:B:63:ARG:HB2	1:B:87:PRO:O	2.00	0.62
1:A:286:ASP:OD2	1:A:289:ARG:NH2	2.34	0.61
1:A:548:LYS:HA	1:A:555:ILE:O	2.00	0.61
1:B:43:CYS:SG	1:B:45:SER:HB3	2.40	0.61
1:A:205:LYS:NZ	1:A:209:ASP:OD2	2.33	0.61
1:B:50:SER:HB3	1:B:65:ILE:HD12	1.83	0.61
1:A:382:THR:HG22	1:A:386:GLU:O	2.00	0.61
1:A:402:MET:HE3	1:A:419:LEU:HD23	1.84	0.59
1:B:16:ILE:HD12	1:B:28:LEU:HD21	1.82	0.59
1:A:155:PHE:CE1	1:A:575:LYS:HE2	2.38	0.59
1:A:418:GLU:C	1:A:420:ASN:H	2.05	0.59
1:B:478:ILE:HD11	1:B:558:VAL:HG11	1.85	0.59
1:B:558:VAL:HG11	1:B:560:MET:HE2	1.85	0.59
1:A:470:ARG:NH1	1:A:586:GLN:OE1	2.36	0.59
1:A:417:GLU:O	1:A:421:ALA:HB3	2.03	0.58
1:A:341:SER:O	1:A:345:GLN:HG2	2.03	0.58
1:A:16:ILE:HD12	1:A:28:LEU:HD21	1.86	0.58
1:B:96:LYS:HE2	4:B:809:HOH:O	2.02	0.57
1:B:409:GLU:O	1:B:413:VAL:HG22	2.03	0.57
1:A:269:ARG:NH1	1:A:326:GLU:OE2	2.35	0.57
1:A:414:LEU:HG	1:A:417:GLU:CD	2.24	0.57
1:A:558:VAL:HG11	1:A:560:MET:HE2	1.87	0.56
1:B:182:ASP:OD2	1:B:207:ARG:NH2	2.32	0.56
1:B:414:LEU:HB2	1:B:417:GLU:H	1.71	0.56
1:B:229:ASN:O	1:B:233:THR:CG2	2.54	0.55
1:B:485:LYS:HD2	1:B:489:GLU:OE2	2.07	0.55
1:B:558:VAL:CG1	1:B:560:MET:HE2	2.37	0.55
1:A:470:ARG:HH11	1:A:470:ARG:HG3	1.72	0.55
4:A:811:HOH:O	1:B:345:GLN:HB3	2.06	0.55
1:B:494:LEU:HA	1:B:499:GLU:HG3	1.88	0.54
1:B:131:ILE:O	1:B:132:ALA:HB3	2.07	0.54
1:B:23:LEU:HD11	1:B:52:MET:CE	2.37	0.54
1:B:546:VAL:HG12	1:B:558:VAL:HG22	1.88	0.54

Continued on next page...

Continued from previous page...

Atom-1	Atom-2	Interatomic distance (Å)	Clash overlap (Å)
1:A:11:VAL:HG12	1:A:73:LEU:HD22	1.90	0.53
1:B:479:ASP:OD1	1:B:482:MET:HG3	2.08	0.53
1:A:131:ILE:O	1:A:132:ALA:HB3	2.08	0.53
1:A:418:GLU:C	1:A:420:ASN:N	2.62	0.52
1:B:164:ASN:HB2	1:B:258:LEU:HD22	1.90	0.52
1:B:76:ASN:HD21	1:B:79:ILE:HB	1.74	0.52
1:B:27:PRO:O	1:B:45:SER:HB2	2.09	0.51
1:B:418:GLU:C	1:B:420:ASN:H	2.13	0.51
1:B:509:PHE:HB3	1:B:510:PRO:HD3	1.92	0.51
1:A:474:ARG:NH2	1:A:475:LEU:HD21	2.25	0.51
1:A:480:GLU:O	1:A:484:GLN:HG3	2.10	0.51
1:B:23:LEU:HD11	1:B:52:MET:HE2	1.91	0.51
1:A:129:PRO:HA	1:A:139:HIS:NE2	2.26	0.51
1:B:183:LYS:HG2	1:B:184:PHE:CE2	2.45	0.51
1:A:161:LEU:HD11	1:A:259:ILE:HD12	1.92	0.50
1:A:207:ARG:HD2	1:A:211:GLU:OE2	2.11	0.50
1:B:406:LYS:HG2	1:B:410:ARG:HD2	1.93	0.50
1:A:407:GLU:N	1:A:407:GLU:OE1	2.45	0.50
1:B:9:GLN:NE2	4:B:810:HOH:O	2.44	0.50
1:A:412:LYS:HE2	1:A:587:ARG:HH22	1.76	0.50
1:A:80:GLU:OE2	4:A:828:HOH:O	2.18	0.49
1:B:407:GLU:N	1:B:407:GLU:OE1	2.45	0.49
1:B:415:THR:O	1:B:419:LEU:HB2	2.11	0.49
1:A:9:GLN:NE2	4:A:738:HOH:O	2.45	0.49
1:A:129:PRO:HA	1:A:139:HIS:CD2	2.47	0.49
1:A:393:LEU:HD11	1:A:446:PHE:CE1	2.48	0.49
1:A:509:PHE:HB3	1:A:510:PRO:HD3	1.95	0.49
1:A:556:LEU:O	1:A:556:LEU:HD12	2.13	0.49
1:A:478:ILE:HD11	1:A:558:VAL:HG11	1.95	0.49
1:A:47:MET:HE1	1:A:87:PRO:HB2	1.95	0.48
1:A:305:LYS:HG3	1:A:309:GLY:O	2.13	0.48
1:A:382:THR:O	1:A:384:SER:HA	2.13	0.48
1:B:414:LEU:HG	1:B:417:GLU:CD	2.34	0.48
1:B:409:GLU:OE2	1:B:412:LYS:HD3	2.13	0.48
1:B:16:ILE:HD12	1:B:28:LEU:CD2	2.44	0.48
1:A:0:SER:HB3	1:A:112:GLN:HG3	1.95	0.48
1:A:552:THR:CG2	1:A:554:LYS:HG3	2.38	0.48
1:B:183:LYS:HG2	1:B:184:PHE:CD2	2.48	0.48
1:B:555:ILE:HG22	1:B:556:LEU:N	2.29	0.48
1:A:469:ILE:HG12	1:A:536:PHE:CZ	2.49	0.47
1:B:418:GLU:C	1:B:420:ASN:N	2.67	0.47

Continued on next page...

Continued from previous page...

Atom-1	Atom-2	Interatomic distance (Å)	Clash overlap (Å)
1:B:552:THR:O	1:B:552:THR:HG23	2.14	0.47
1:A:196:ASP:OD2	1:A:199:VAL:N	2.41	0.47
1:A:408:LYS:HG2	1:A:408:LYS:O	2.14	0.47
1:B:413:VAL:HG21	1:B:418:GLU:HB2	1.95	0.47
1:B:470:ARG:HG3	1:B:470:ARG:HH11	1.79	0.47
1:A:415:THR:O	1:A:419:LEU:HB2	2.14	0.47
1:A:525:LEU:HD23	1:A:580:LEU:CD2	2.45	0.47
1:A:129:PRO:HB3	1:A:135:MET:HG3	1.97	0.47
1:A:421:ALA:O	1:A:425:SER:HB2	2.15	0.47
1:A:183:LYS:HG2	1:A:184:PHE:CE2	2.49	0.46
1:B:376:ASP:OD2	1:B:378:LYS:HG3	2.15	0.46
1:B:71:LYS:HG2	1:B:71:LYS:O	2.15	0.46
1:A:29:LEU:HD12	1:A:29:LEU:HA	1.72	0.46
1:A:558:VAL:HG12	1:A:560:MET:HE2	1.96	0.46
1:A:66:ALA:O	1:A:70:THR:HG23	2.16	0.46
1:B:432:LYS:NZ	1:B:581:GLY:O	2.38	0.46
1:B:470:ARG:NH1	1:B:586:GLN:OE1	2.48	0.46
1:A:413:VAL:HG21	1:A:418:GLU:HB2	1.97	0.46
1:A:57:GLU:OE1	1:A:58:GLN:HB2	2.15	0.46
1:B:183:LYS:NZ	1:B:203:GLU:OE1	2.37	0.45
1:B:242:VAL:O	1:B:246:GLU:HG3	2.16	0.45
1:B:463:LEU:HD22	1:B:584:PRO:HA	1.98	0.45
1:B:546:VAL:HG13	1:B:563:MET:CE	2.47	0.45
1:A:559:ASN:HB3	1:A:561:TRP:CZ3	2.51	0.45
1:A:463:LEU:HD22	1:A:584:PRO:HA	1.99	0.45
1:A:382:THR:O	1:A:382:THR:HG23	2.16	0.45
1:B:408:LYS:N	4:B:820:HOH:O	2.03	0.45
1:B:396:GLU:CG	1:B:448:PHE:CE2	2.92	0.45
1:A:479:ASP:OD1	1:A:482:MET:HG3	2.17	0.45
1:A:63:ARG:HB2	1:A:87:PRO:O	2.16	0.45
1:A:12:PHE:O	1:A:16:ILE:HG13	2.16	0.45
1:A:389:ARG:HB2	1:A:392:ASP:OD2	2.17	0.45
1:A:452:LEU:HA	1:A:452:LEU:HD23	1.79	0.45
1:A:386:GLU:HG2	1:A:387:THR:H	1.82	0.45
1:B:31:THR:HB	1:B:32:PRO:HD2	1.99	0.45
1:B:380:PHE:O	1:B:381:LYS:HD3	2.17	0.45
1:B:47:MET:HE1	1:B:87:PRO:HB2	1.99	0.44
1:B:266:TYR:CE1	1:B:319:ALA:HA	2.52	0.44
1:A:131:ILE:O	1:A:172:GLN:NE2	2.51	0.44
1:A:336:VAL:O	1:A:368:GLY:HA2	2.18	0.44
1:A:81:LYS:HE3	1:A:83:GLU:OE2	2.17	0.44

Continued on next page...

Continued from previous page...

Atom-1	Atom-2	Interatomic distance (Å)	Clash overlap (Å)
1:A:39:GLY:HA2	1:A:93:HIS:CE1	2.52	0.44
1:B:430:CYS:SG	1:B:459:ALA:HB3	2.57	0.44
1:B:155:PHE:CZ	1:B:575:LYS:HE2	2.52	0.44
1:B:550:ARG:HB3	1:B:551:GLN:H	1.40	0.44
1:A:406:LYS:CG	1:A:410:ARG:HD2	2.43	0.44
1:B:410:ARG:H	1:B:410:ARG:HG2	1.45	0.44
1:B:76:ASN:OD1	1:B:79:ILE:N	2.33	0.44
1:A:508:ARG:O	1:A:511:GLU:HG2	2.18	0.44
1:A:546:VAL:HG13	1:A:563:MET:CE	2.47	0.44
1:B:207:ARG:HD2	1:B:211:GLU:OE2	2.18	0.44
1:B:299:ILE:HD11	1:B:342:VAL:HG12	1.99	0.44
1:B:336:VAL:O	1:B:368:GLY:HA2	2.18	0.43
1:A:383:ARG:HG3	1:A:383:ARG:O	2.17	0.43
1:B:76:ASN:ND2	1:B:79:ILE:HB	2.32	0.43
1:B:50:SER:HB3	1:B:65:ILE:CD1	2.48	0.43
1:A:245:GLN:NE2	4:A:761:HOH:O	2.46	0.43
1:B:119:ASN:HA	4:B:730:HOH:O	2.19	0.43
1:A:186:ASP:N	1:A:186:ASP:OD1	2.52	0.43
1:B:54:LYS:HG3	1:B:59:LYS:HD3	2.00	0.43
1:A:400:ARG:NH1	4:A:721:HOH:O	2.48	0.43
1:A:161:LEU:CD1	1:A:259:ILE:HD12	2.49	0.43
1:B:269:ARG:NH1	1:B:326:GLU:OE2	2.49	0.43
1:B:471:SER:O	1:B:475:LEU:HG	2.18	0.43
1:A:515:LYS:HD2	1:A:515:LYS:HA	1.83	0.42
1:A:230:PRO:HB2	4:A:735:HOH:O	2.20	0.42
1:B:197:LEU:HD12	1:B:197:LEU:HA	1.66	0.42
1:A:409:GLU:O	1:A:413:VAL:HG22	2.19	0.42
1:A:71:LYS:HG2	1:A:71:LYS:O	2.18	0.42
1:B:371:VAL:HG23	1:B:372:VAL:N	2.34	0.42
1:B:412:LYS:HE2	1:B:587:ARG:HH22	1.83	0.42
1:B:96:LYS:HD3	1:B:500:TRP:CZ3	2.54	0.42
1:B:543:CYS:HB3	1:B:562:ARG:NH1	2.34	0.42
1:A:147:GLU:O	1:A:151:ARG:HG3	2.19	0.42
1:B:120:LYS:HB2	1:B:158:TYR:CD2	2.54	0.42
1:B:511:GLU:HB3	4:B:721:HOH:O	2.19	0.42
1:A:16:ILE:HD12	1:A:28:LEU:CD2	2.48	0.42
1:A:552:THR:HG23	1:A:552:THR:O	2.19	0.42
1:A:11:VAL:HG12	1:A:73:LEU:CD2	2.49	0.42
1:A:321:LYS:NZ	4:A:768:HOH:O	2.52	0.42
1:B:348:PHE:O	1:B:352:GLN:HG3	2.20	0.42
1:B:525:LEU:O	1:B:529:ILE:HG12	2.19	0.42

Continued on next page...

Continued from previous page...

Atom-1	Atom-2	Interatomic distance (Å)	Clash overlap (Å)
1:B:183:LYS:HD3	1:B:184:PHE:CZ	2.55	0.42
1:B:113:LEU:CD2	1:B:114:PRO:HD2	2.50	0.41
1:B:131:ILE:HD13	1:B:131:ILE:N	2.34	0.41
1:B:16:ILE:HD11	1:B:45:SER:OG	2.20	0.41
1:B:389:ARG:HB2	1:B:392:ASP:OD2	2.20	0.41
1:A:474:ARG:HH21	1:A:475:LEU:HD21	1.85	0.41
1:A:106:LEU:HD13	1:A:111:VAL:HG22	2.01	0.41
1:B:508:ARG:O	1:B:511:GLU:HG2	2.21	0.41
1:A:80:GLU:HA	1:A:80:GLU:OE1	2.21	0.41
1:B:131:ILE:HG23	1:B:243:SER:CB	2.50	0.41
1:B:273:ILE:HA	1:B:273:ILE:HD13	1.79	0.41
1:B:142:SER:HB2	3:B:602:GOL:H12	2.02	0.41
1:B:337:ASP:H	3:B:602:GOL:HO2	1.67	0.41
1:A:11:VAL:CG1	1:A:73:LEU:HD22	2.50	0.41
1:B:305:LYS:HG3	1:B:309:GLY:O	2.21	0.41
1:B:418:GLU:OE2	1:B:419:LEU:N	2.54	0.41
1:A:266:TYR:CE1	1:A:319:ALA:HA	2.56	0.40
1:A:336:VAL:HG12	1:A:337:ASP:N	2.36	0.40
1:B:413:VAL:HB	1:B:417:GLU:HB3	2.03	0.40
1:B:478:ILE:HG22	1:B:483:LEU:HG	2.03	0.40
1:B:244:ARG:HB2	1:B:244:ARG:HE	1.52	0.40
1:B:478:ILE:CD1	1:B:558:VAL:HG11	2.49	0.40
1:A:413:VAL:HB	1:A:417:GLU:HB3	2.04	0.40

There are no symmetry-related clashes.

5.3 Torsion angles [i](#)

5.3.1 Protein backbone [i](#)

In the following table, the Percentiles column shows the percent Ramachandran outliers of the chain as a percentile score with respect to all X-ray entries followed by that with respect to entries of similar resolution.

The Analysed column shows the number of residues for which the backbone conformation was analysed, and the total number of residues.

Mol	Chain	Analysed	Favoured	Allowed	Outliers	Percentiles
1	A	588/607 (97%)	561 (95%)	23 (4%)	4 (1%)	22 32
1	B	584/607 (96%)	559 (96%)	19 (3%)	6 (1%)	15 23

Continued on next page...

Continued from previous page...

Mol	Chain	Analysed	Favoured	Allowed	Outliers	Percentiles
All	All	1172/1214 (96%)	1120 (96%)	42 (4%)	10 (1%)	17 25

All (10) Ramachandran outliers are listed below:

Mol	Chain	Res	Type
1	A	419	LEU
1	B	419	LEU
1	B	553	GLY
1	A	88	GLY
1	A	127	SER
1	A	555	ILE
1	B	88	GLY
1	B	127	SER
1	B	555	ILE
1	B	549	ASP

5.3.2 Protein sidechains [i](#)

In the following table, the Percentiles column shows the percent sidechain outliers of the chain as a percentile score with respect to all X-ray entries followed by that with respect to entries of similar resolution.

The Analysed column shows the number of residues for which the sidechain conformation was analysed, and the total number of residues.

Mol	Chain	Analysed	Rotameric	Outliers	Percentiles
1	A	515/530 (97%)	508 (99%)	7 (1%)	67 82
1	B	514/530 (97%)	508 (99%)	6 (1%)	71 85
All	All	1029/1060 (97%)	1016 (99%)	13 (1%)	69 84

All (13) residues with a non-rotameric sidechain are listed below:

Mol	Chain	Res	Type
1	A	45	SER
1	A	316	ASP
1	A	322	GLN
1	A	337	ASP
1	A	365	PHE
1	A	371	VAL
1	A	550	ARG
1	B	45	SER

Continued on next page...

Continued from previous page...

Mol	Chain	Res	Type
1	B	233	THR
1	B	314	THR
1	B	316	ASP
1	B	322	GLN
1	B	365	PHE

Some sidechains can be flipped to improve hydrogen bonding and reduce clashes. All (2) such sidechains are listed below:

Mol	Chain	Res	Type
1	B	9	GLN
1	B	172	GLN

5.3.3 RNA [i](#)

There are no RNA molecules in this entry.

5.4 Non-standard residues in protein, DNA, RNA chains [i](#)

There are no non-standard protein/DNA/RNA residues in this entry.

5.5 Carbohydrates [i](#)

There are no monosaccharides in this entry.

5.6 Ligand geometry [i](#)

4 ligands are modelled in this entry.

In the following table, the Counts columns list the number of bonds (or angles) for which Mogul statistics could be retrieved, the number of bonds (or angles) that are observed in the model and the number of bonds (or angles) that are defined in the Chemical Component Dictionary. The Link column lists molecule types, if any, to which the group is linked. The Z score for a bond length (or angle) is the number of standard deviations the observed value is removed from the expected value. A bond length (or angle) with $|Z| > 2$ is considered an outlier worth inspection. RMSZ is the root-mean-square of all Z scores of the bond lengths (or angles).

Mol	Type	Chain	Res	Link	Bond lengths			Bond angles		
					Counts	RMSZ	$\# Z > 2$	Counts	RMSZ	$\# Z > 2$
3	GOL	B	602	-	5,5,5	0.50	0	5,5,5	0.22	0
3	GOL	A	602	-	5,5,5	0.46	0	5,5,5	0.29	0

Mol	Type	Chain	Res	Link	Bond lengths			Bond angles		
					Counts	RMSZ	# Z > 2	Counts	RMSZ	# Z > 2
2	ARG	A	601	-	7,11,11	0.30	0	6,13,13	0.65	0
2	ARG	B	601	-	7,11,11	0.27	0	6,13,13	0.53	0

In the following table, the Chirals column lists the number of chiral outliers, the number of chiral centers analysed, the number of these observed in the model and the number defined in the Chemical Component Dictionary. Similar counts are reported in the Torsion and Rings columns. '-' means no outliers of that kind were identified.

Mol	Type	Chain	Res	Link	Chirals	Torsions	Rings
3	GOL	B	602	-	-	4/4/4/4	-
3	GOL	A	602	-	-	4/4/4/4	-
2	ARG	A	601	-	-	0/7/11/11	-
2	ARG	B	601	-	-	0/7/11/11	-

There are no bond length outliers.

There are no bond angle outliers.

There are no chirality outliers.

All (8) torsion outliers are listed below:

Mol	Chain	Res	Type	Atoms
3	B	602	GOL	O1-C1-C2-O2
3	B	602	GOL	O1-C1-C2-C3
3	B	602	GOL	C1-C2-C3-O3
3	A	602	GOL	O1-C1-C2-C3
3	B	602	GOL	O2-C2-C3-O3
3	A	602	GOL	O1-C1-C2-O2
3	A	602	GOL	C1-C2-C3-O3
3	A	602	GOL	O2-C2-C3-O3

There are no ring outliers.

1 monomer is involved in 2 short contacts:

Mol	Chain	Res	Type	Clashes	Symm-Clashes
3	B	602	GOL	2	0

5.7 Other polymers [i](#)

There are no such residues in this entry.

5.8 Polymer linkage issues

There are no chain breaks in this entry.

6 Fit of model and data

6.1 Protein, DNA and RNA chains

In the following table, the column labelled ‘#RSRZ> 2’ contains the number (and percentage) of RSRZ outliers, followed by percent RSRZ outliers for the chain as percentile scores relative to all X-ray entries and entries of similar resolution. The OWAB column contains the minimum, median, 95th percentile and maximum values of the occupancy-weighted average B-factor per residue. The column labelled ‘Q< 0.9’ lists the number of (and percentage) of residues with an average occupancy less than 0.9.

Mol	Chain	Analysed	<RSRZ>	#RSRZ>2	OWAB(Å ²)	Q<0.9
1	A	590/607 (97%)	-0.07	9 (1%) 73 72	27, 45, 71, 101	0
1	B	588/607 (96%)	-0.05	15 (2%) 56 54	25, 45, 70, 102	0
All	All	1178/1214 (97%)	-0.06	24 (2%) 65 63	25, 45, 71, 102	0

All (24) RSRZ outliers are listed below:

Mol	Chain	Res	Type	RSRZ
1	A	549	ASP	4.8
1	B	548	LYS	4.6
1	B	117	GLY	4.5
1	B	419	LEU	4.1
1	B	555	ILE	3.8
1	A	384	SER	3.7
1	A	117	GLY	3.6
1	B	551	GLN	3.4
1	A	552	THR	3.2
1	A	419	LEU	3.2
1	B	387	THR	2.8
1	B	549	ASP	2.7
1	B	383	ARG	2.6
1	A	475	LEU	2.5
1	B	550	ARG	2.4
1	B	455	ARG	2.4
1	A	385	GLY	2.3
1	A	145	ILE	2.2
1	A	551	GLN	2.2
1	B	552	THR	2.1
1	B	377	LYS	2.1
1	B	545	CYS	2.1
1	B	553	GLY	2.1
1	B	580	LEU	2.0

6.2 Non-standard residues in protein, DNA, RNA chains [i](#)

There are no non-standard protein/DNA/RNA residues in this entry.

6.3 Carbohydrates [i](#)

There are no monosaccharides in this entry.

6.4 Ligands [i](#)

In the following table, the Atoms column lists the number of modelled atoms in the group and the number defined in the chemical component dictionary. The B-factors column lists the minimum, median, 95th percentile and maximum values of B factors of atoms in the group. The column labelled 'Q< 0.9' lists the number of atoms with occupancy less than 0.9.

Mol	Type	Chain	Res	Atoms	RSCC	RSR	B-factors(Å ²)	Q<0.9
3	GOL	B	602	6/6	0.94	0.25	40,49,53,59	0
3	GOL	A	602	6/6	0.94	0.18	39,48,53,57	0
2	ARG	B	601	12/12	0.95	0.15	27,31,42,42	0
2	ARG	A	601	12/12	0.97	0.15	24,28,36,42	0

6.5 Other polymers [i](#)

There are no such residues in this entry.