



Full wwPDB X-ray Structure Validation Report ⓘ

Sep 17, 2023 – 06:59 AM EDT

PDB ID : 4PIP
Title : Engineered EgtD variant EgtD-M252V,E282A in complex with tryptophan and SAH
Authors : Vit, A.; Seebeck, F.P.; Blankenfeldt, W.
Deposited on : 2014-05-09
Resolution : 1.80 Å(reported)

This is a Full wwPDB X-ray Structure Validation Report for a publicly released PDB entry.

We welcome your comments at validation@mail.wwpdb.org

A user guide is available at

<https://www.wwpdb.org/validation/2017/XrayValidationReportHelp>

with specific help available everywhere you see the ⓘ symbol.

The types of validation reports are described at

<http://www.wwpdb.org/validation/2017/FAQs#types>.

The following versions of software and data (see [references ⓘ](#)) were used in the production of this report:

MolProbity : 4.02b-467
Mogul : 1.8.5 (274361), CSD as541be (2020)
Xtriage (Phenix) : 1.13
EDS : 2.35.1
buster-report : 1.1.7 (2018)
Percentile statistics : 20191225.v01 (using entries in the PDB archive December 25th 2019)
Refmac : 5.8.0158
CCP4 : 7.0.044 (Gargrove)
Ideal geometry (proteins) : Engh & Huber (2001)
Ideal geometry (DNA, RNA) : Parkinson et al. (1996)
Validation Pipeline (wwPDB-VP) : 2.35.1

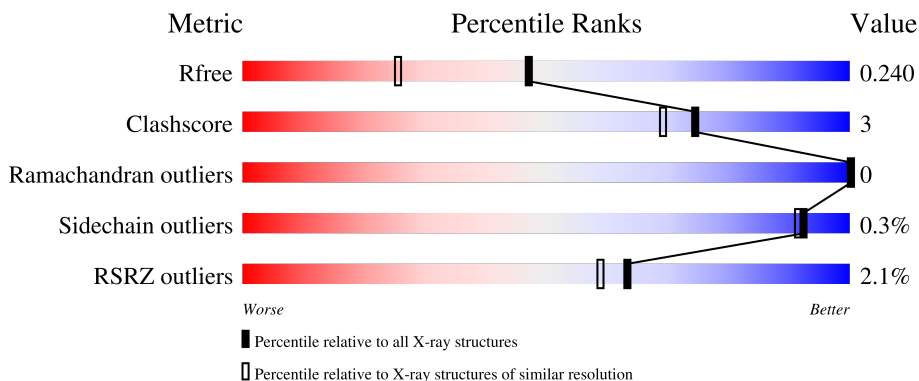
1 Overall quality at a glance

The following experimental techniques were used to determine the structure:

X-RAY DIFFRACTION

The reported resolution of this entry is 1.80 Å.

Percentile scores (ranging between 0-100) for global validation metrics of the entry are shown in the following graphic. The table shows the number of entries on which the scores are based.



Metric	Whole archive (#Entries)	Similar resolution (#Entries, resolution range(Å))
R_{free}	130704	5950 (1.80-1.80)
Clashscore	141614	6793 (1.80-1.80)
Ramachandran outliers	138981	6697 (1.80-1.80)
Sidechain outliers	138945	6696 (1.80-1.80)
RSRZ outliers	127900	5850 (1.80-1.80)

The table below summarises the geometric issues observed across the polymeric chains and their fit to the electron density. The red, orange, yellow and green segments of the lower bar indicate the fraction of residues that contain outliers for ≥ 3 , 2, 1 and 0 types of geometric quality criteria respectively. A grey segment represents the fraction of residues that are not modelled. The numeric value for each fraction is indicated below the corresponding segment, with a dot representing fractions $\leq 5\%$. The upper red bar (where present) indicates the fraction of residues that have poor fit to the electron density. The numeric value is given above the bar.

Mol	Chain	Length	Quality of chain
1	A	323	 96%
1	B	323	 92%
1	C	323	 91% 7%
1	D	323	 89% 9%

The following table lists non-polymeric compounds, carbohydrate monomers and non-standard

residues in protein, DNA, RNA chains that are outliers for geometric or electron-density-fit criteria:

Mol	Type	Chain	Res	Chirality	Geometry	Clashes	Electron density
5	CL	C	401	-	-	X	-

2 Entry composition [i](#)

There are 6 unique types of molecules in this entry. The entry contains 20818 atoms, of which 9603 are hydrogens and 0 are deuteriums.

In the tables below, the ZeroOcc column contains the number of atoms modelled with zero occupancy, the AltConf column contains the number of residues with at least one atom in alternate conformation and the Trace column contains the number of residues modelled with at most 2 atoms.

- Molecule 1 is a protein called Histidine-specific methyltransferase EgtD.

Mol	Chain	Residues	Atoms					ZeroOcc	AltConf	Trace	
			Total	C	H	N	O				S
1	A	316	4839	1541	2395	427	471	5	0	6	0
1	B	309	4733	1497	2352	421	458	5	0	1	0
1	C	315	4727	1512	2330	416	463	6	0	2	0
1	D	318	4868	1548	2411	429	475	5	0	7	0

There are 32 discrepancies between the modelled and reference sequences:

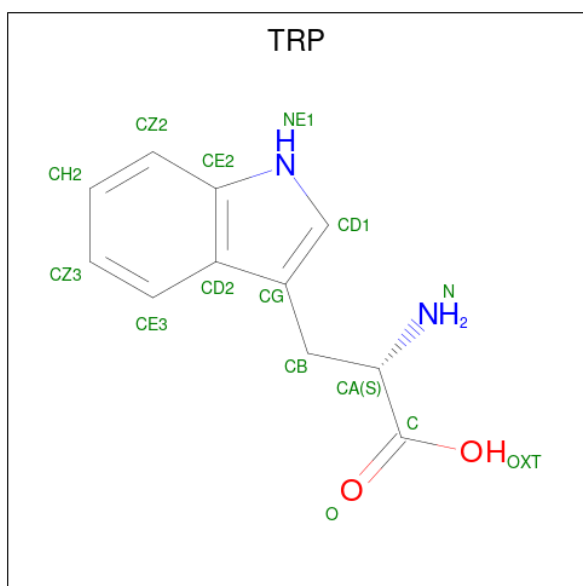
Chain	Residue	Modelled	Actual	Comment	Reference
A	-1	GLY	-	expression tag	UNP A0R5M8
A	0	HIS	-	expression tag	UNP A0R5M8
A	2	ALA	THR	engineered mutation	UNP A0R5M8
A	29	THR	ALA	engineered mutation	UNP A0R5M8
A	30	GLN	PRO	engineered mutation	UNP A0R5M8
A	75	SER	ALA	engineered mutation	UNP A0R5M8
A	252	VAL	MET	engineered mutation	UNP A0R5M8
A	282	ALA	GLU	engineered mutation	UNP A0R5M8
B	-1	GLY	-	expression tag	UNP A0R5M8
B	0	HIS	-	expression tag	UNP A0R5M8
B	2	ALA	THR	engineered mutation	UNP A0R5M8
B	29	THR	ALA	engineered mutation	UNP A0R5M8
B	30	GLN	PRO	engineered mutation	UNP A0R5M8
B	75	SER	ALA	engineered mutation	UNP A0R5M8
B	252	VAL	MET	engineered mutation	UNP A0R5M8
B	282	ALA	GLU	engineered mutation	UNP A0R5M8
C	-1	GLY	-	expression tag	UNP A0R5M8
C	0	HIS	-	expression tag	UNP A0R5M8
C	2	ALA	THR	engineered mutation	UNP A0R5M8
C	29	THR	ALA	engineered mutation	UNP A0R5M8
C	30	GLN	PRO	engineered mutation	UNP A0R5M8

Continued on next page...

Continued from previous page...

Chain	Residue	Modelled	Actual	Comment	Reference
C	75	SER	ALA	engineered mutation	UNP A0R5M8
C	252	VAL	MET	engineered mutation	UNP A0R5M8
C	282	ALA	GLU	engineered mutation	UNP A0R5M8
D	-1	GLY	-	expression tag	UNP A0R5M8
D	0	HIS	-	expression tag	UNP A0R5M8
D	2	ALA	THR	engineered mutation	UNP A0R5M8
D	29	THR	ALA	engineered mutation	UNP A0R5M8
D	30	GLN	PRO	engineered mutation	UNP A0R5M8
D	75	SER	ALA	engineered mutation	UNP A0R5M8
D	252	VAL	MET	engineered mutation	UNP A0R5M8
D	282	ALA	GLU	engineered mutation	UNP A0R5M8

- Molecule 2 is TRYPTOPHAN (three-letter code: TRP) (formula: $C_{11}H_{12}N_2O_2$).



Mol	Chain	Residues	Atoms				ZeroOcc	AltConf	
			Total	C	H	N			O
2	A	1	Total	C	H	N	O	0	0
			27	11	12	2	2		
2	B	1	Total	C	H	N	O	0	0
			24	11	9	2	2		
2	C	1	Total	C	H	N	O	0	0
			24	11	9	2	2		
2	D	1	Total	C	H	N	O	0	0
			24	11	9	2	2		

- Molecule 3 is S-ADENOSYL-L-HOMOCYSTEINE (three-letter code: SAH) (formula: $C_{14}H_{20}N_6O_5S$).

Mol	Chain	Residues	Atoms		ZeroOcc	AltConf
6	A	343	Total 343	O 343	0	0
6	B	325	Total 325	O 325	0	0
6	C	360	Total 360	O 360	0	0
6	D	341	Total 341	O 341	0	0

4 Data and refinement statistics i

Property	Value	Source
Space group	P 1 21 1	Depositor
Cell constants a, b, c, α , β , γ	79.05Å 67.63Å 112.12Å 90.00° 109.24° 90.00°	Depositor
Resolution (Å)	41.86 – 1.80 41.86 – 1.80	Depositor EDS
% Data completeness (in resolution range)	99.9 (41.86-1.80) 99.9 (41.86-1.80)	Depositor EDS
R_{merge}	(Not available)	Depositor
R_{sym}	0.11	Depositor
$\langle I/\sigma(I) \rangle$ ¹	2.46 (at 1.79Å)	Xtrriage
Refinement program	PHENIX	Depositor
R, R_{free}	0.194 , 0.239 0.196 , 0.240	Depositor DCC
R_{free} test set	5272 reflections (5.09%)	wwPDB-VP
Wilson B-factor (Å ²)	16.2	Xtrriage
Anisotropy	0.286	Xtrriage
Bulk solvent k_{sol} (e/Å ³), B_{sol} (Å ²)	0.39 , 53.0	EDS
L-test for twinning ²	$\langle L \rangle = 0.46$, $\langle L^2 \rangle = 0.29$	Xtrriage
Estimated twinning fraction	0.000 for h,-k,-h-l	Xtrriage
F_o, F_c correlation	0.94	EDS
Total number of atoms	20818	wwPDB-VP
Average B, all atoms (Å ²)	24.0	wwPDB-VP

Xtrriage's analysis on translational NCS is as follows: *The analyses of the Patterson function reveals a significant off-origin peak that is 69.76 % of the origin peak, indicating pseudo-translational symmetry. The chance of finding a peak of this or larger height randomly in a structure without pseudo-translational symmetry is equal to 3.5033e-06. The detected translational NCS is most likely also responsible for the elevated intensity ratio.*

¹Intensities estimated from amplitudes.

²Theoretical values of $\langle |L| \rangle$, $\langle L^2 \rangle$ for acentric reflections are 0.5, 0.333 respectively for untwinned datasets, and 0.375, 0.2 for perfectly twinned datasets.

5 Model quality [i](#)

5.1 Standard geometry [i](#)

Bond lengths and bond angles in the following residue types are not validated in this section: SAH, CL, MG

The Z score for a bond length (or angle) is the number of standard deviations the observed value is removed from the expected value. A bond length (or angle) with $|Z| > 5$ is considered an outlier worth inspection. RMSZ is the root-mean-square of all Z scores of the bond lengths (or angles).

Mol	Chain	Bond lengths		Bond angles	
		RMSZ	# Z >5	RMSZ	# Z >5
1	A	0.44	2/2500 (0.1%)	0.61	0/3400
1	B	0.44	0/2428	0.57	1/3300 (0.0%)
1	C	0.39	0/2445	0.54	0/3325
1	D	0.37	0/2523	0.56	1/3435 (0.0%)
All	All	0.41	2/9896 (0.0%)	0.57	2/13460 (0.0%)

All (2) bond length outliers are listed below:

Mol	Chain	Res	Type	Atoms	Z	Observed(Å)	Ideal(Å)
1	A	48[A]	ASP	CA-C	5.25	1.66	1.52
1	A	48[B]	ASP	CA-C	5.25	1.66	1.52

All (2) bond angle outliers are listed below:

Mol	Chain	Res	Type	Atoms	Z	Observed(°)	Ideal(°)
1	D	5	LEU	CA-CB-CG	5.35	127.61	115.30
1	B	90	SER	CB-CA-C	5.06	119.71	110.10

There are no chirality outliers.

There are no planarity outliers.

5.2 Too-close contacts [i](#)

In the following table, the Non-H and H(model) columns list the number of non-hydrogen atoms and hydrogen atoms in the chain respectively. The H(added) column lists the number of hydrogen atoms added and optimized by MolProbity. The Clashes column lists the number of clashes within the asymmetric unit, whereas Symm-Clashes lists symmetry-related clashes.

Mol	Chain	Non-H	H(model)	H(added)	Clashes	Symm-Clashes
1	A	2444	2395	2408	6	0
1	B	2381	2352	2349	8	0
1	C	2397	2330	2362	22	0
1	D	2457	2411	2414	23	1
2	A	15	12	9	1	0
2	B	15	9	9	1	0
2	C	15	9	9	0	0
2	D	15	9	9	0	0
3	A	26	19	19	0	0
3	B	26	19	19	0	0
3	C	26	19	19	0	0
3	D	26	19	19	0	0
4	B	1	0	0	0	0
4	C	1	0	0	0	0
5	C	1	0	0	5	1
6	A	343	0	0	2	4
6	B	325	0	0	6	4
6	C	360	0	0	5	3
6	D	341	0	0	10	2
All	All	11215	9603	9645	62	8

The all-atom clashscore is defined as the number of clashes found per 1000 atoms (including hydrogen atoms). The all-atom clashscore for this structure is 3.

All (62) close contacts within the same asymmetric unit are listed below, sorted by their clash magnitude.

Atom-1	Atom-2	Interatomic distance (Å)	Clash overlap (Å)
1:C:1:MET:CE	1:C:4:SER:OG	1.92	1.17
1:C:0:HIS:ND1	5:C:401:CL:CL	2.17	1.13
1:C:-1:GLY:N	5:C:401:CL:CL	2.23	1.08
1:C:1:MET:HE1	1:C:4:SER:OG	1.51	1.03
1:C:0:HIS:N	5:C:401:CL:CL	2.28	1.02
1:B:48:ASP:OD1	6:B:501:HOH:O	2.05	0.74
1:D:298:GLU:OE1	6:D:501:HOH:O	2.06	0.73
1:C:1:MET:HE3	1:C:4:SER:OG	1.87	0.72
5:C:401:CL:CL	6:C:592:HOH:O	2.47	0.69
1:D:184:GLN:OE1	6:D:502:HOH:O	2.10	0.69
1:D:5:LEU:HD11	1:D:119:LEU:HD13	1.76	0.68
1:D:233[A]:ASP:OD1	6:D:677:HOH:O	2.11	0.67
1:B:84:GLU:OE1	6:B:725:HOH:O	2.12	0.67
1:C:320:VAL:HG11	6:C:621:HOH:O	1.96	0.66
1:A:184:GLN:NE2	6:A:773:HOH:O	2.28	0.65

Continued on next page...

Continued from previous page...

Atom-1	Atom-2	Interatomic distance (Å)	Clash overlap (Å)
1:B:30:GLN:O	6:B:671:HOH:O	2.15	0.63
1:D:235:ASP:OD2	6:D:503:HOH:O	2.15	0.63
1:D:5:LEU:HD12	1:D:137:ALA:CB	2.29	0.63
1:C:1:MET:CE	1:C:4:SER:HG	2.12	0.61
1:C:1:MET:HE1	1:C:4:SER:HG	1.67	0.59
1:D:321:ARG:NE	6:D:781:HOH:O	2.33	0.59
1:B:80:ASP:OD2	6:B:502:HOH:O	2.17	0.59
1:D:141:ASP:H	1:D:145:HIS:HD2	1.53	0.57
1:D:5:LEU:HD12	1:D:137:ALA:HB3	1.86	0.57
1:C:1:MET:HE3	1:C:1:MET:HA	1.87	0.57
1:D:249:ARG:HD2	1:D:283[B]:VAL:HG21	1.86	0.56
1:C:60:ARG:NH2	6:C:801:HOH:O	2.30	0.55
1:C:240:VAL:HG13	1:C:253:TRP:HB2	1.89	0.54
1:D:5:LEU:HD11	1:D:119:LEU:CD1	2.37	0.54
1:A:170:ALA:HB3	1:A:171:PRO:HD3	1.90	0.54
1:C:5:LEU:HD22	1:C:116:ALA:HB1	1.90	0.53
1:D:9:LEU:HD13	1:D:114:VAL:HG23	1.91	0.53
1:D:170:ALA:HB3	1:D:171:PRO:HD3	1.94	0.50
1:C:141:ASP:H	1:C:145:HIS:HD2	1.58	0.50
1:C:224:VAL:HG13	1:C:228:LEU:HD12	1.94	0.50
1:D:91:GLU:OE2	6:D:504:HOH:O	2.17	0.50
1:B:137:ALA:O	6:B:712:HOH:O	2.20	0.49
1:C:1:MET:CE	1:C:1:MET:HA	2.42	0.49
1:D:260:GLN:NE2	6:D:508:HOH:O	2.37	0.49
1:B:170:ALA:HB3	1:B:171:PRO:HD3	1.94	0.48
2:B:401:TRP:N	6:B:745:HOH:O	2.46	0.48
1:D:30:GLN:NE2	6:D:767:HOH:O	2.38	0.48
1:D:275:ALA:O	6:D:683:HOH:O	2.20	0.47
1:D:5:LEU:HD12	1:D:137:ALA:HB1	1.96	0.46
1:A:290[B]:GLU:OE1	1:A:290[B]:GLU:N	2.38	0.46
1:A:290[A]:GLU:OE1	1:A:290[A]:GLU:N	2.39	0.45
2:A:401:TRP:N	6:A:743:HOH:O	2.50	0.45
1:C:240:VAL:CG1	1:C:253:TRP:HB2	2.47	0.45
1:D:158[A]:VAL:CG1	1:D:160:LEU:HG	2.47	0.45
1:A:57:TYR:N	1:A:58:PRO:CD	2.80	0.45
1:C:57:TYR:N	1:C:58:PRO:CD	2.80	0.44
1:A:290[B]:GLU:H	1:A:290[B]:GLU:CD	2.19	0.44
1:B:57:TYR:N	1:B:58:PRO:CD	2.81	0.43
1:C:148:LYS:NZ	6:C:753:HOH:O	2.43	0.43
1:C:158:VAL:HG12	1:C:160:LEU:HG	2.01	0.43
1:B:255:ARG:NH2	1:B:278:GLU:OE2	2.42	0.43

Continued on next page...

Continued from previous page...

Atom-1	Atom-2	Interatomic distance (Å)	Clash overlap (Å)
1:D:158[A]:VAL:HG12	1:D:160:LEU:HG	2.01	0.43
1:D:164:ILE:HG12	1:D:172:ARG:HD2	2.01	0.42
1:C:305:HIS:NE2	6:C:789:HOH:O	2.29	0.42
1:C:-1:GLY:CA	5:C:401:CL:CL	3.04	0.41
1:D:57:TYR:N	1:D:58:PRO:CD	2.84	0.40
1:D:152:VAL:HG11	6:D:740:HOH:O	2.21	0.40

All (8) symmetry-related close contacts are listed below. The label for Atom-2 includes the symmetry operator and encoded unit-cell translations to be applied.

Atom-1	Atom-2	Interatomic distance (Å)	Clash overlap (Å)
1:D:305:HIS:HE2	5:C:401:CL:CL[1_445]	1.42	0.18
6:A:558:HOH:O	6:D:511:HOH:O[1_655]	2.08	0.12
6:A:618:HOH:O	6:C:607:HOH:O[1_545]	2.09	0.11
6:A:596:HOH:O	6:A:624:HOH:O[2_544]	2.11	0.09
6:B:544:HOH:O	6:D:610:HOH:O[1_565]	2.11	0.09
6:B:596:HOH:O	6:C:503:HOH:O[1_455]	2.14	0.06
6:B:601:HOH:O	6:C:543:HOH:O[2_545]	2.16	0.04
6:A:548:HOH:O	6:B:537:HOH:O[1_545]	2.19	0.01

5.3 Torsion angles [i](#)

5.3.1 Protein backbone [i](#)

In the following table, the Percentiles column shows the percent Ramachandran outliers of the chain as a percentile score with respect to all X-ray entries followed by that with respect to entries of similar resolution.

The Analysed column shows the number of residues for which the backbone conformation was analysed, and the total number of residues.

Mol	Chain	Analysed	Favoured	Allowed	Outliers	Percentiles	
1	A	317/323 (98%)	307 (97%)	10 (3%)	0	100	100
1	B	308/323 (95%)	300 (97%)	8 (3%)	0	100	100
1	C	313/323 (97%)	309 (99%)	4 (1%)	0	100	100
1	D	323/323 (100%)	318 (98%)	5 (2%)	0	100	100
All	All	1261/1292 (98%)	1234 (98%)	27 (2%)	0	100	100

There are no Ramachandran outliers to report.

5.3.2 Protein sidechains [i](#)

In the following table, the Percentiles column shows the percent sidechain outliers of the chain as a percentile score with respect to all X-ray entries followed by that with respect to entries of similar resolution.

The Analysed column shows the number of residues for which the sidechain conformation was analysed, and the total number of residues.

Mol	Chain	Analysed	Rotameric	Outliers	Percentiles	
1	A	251/253 (99%)	251 (100%)	0	100	100
1	B	244/253 (96%)	243 (100%)	1 (0%)	91	89
1	C	244/253 (96%)	243 (100%)	1 (0%)	91	89
1	D	251/253 (99%)	250 (100%)	1 (0%)	91	89
All	All	990/1012 (98%)	987 (100%)	3 (0%)	92	91

All (3) residues with a non-rotameric sidechain are listed below:

Mol	Chain	Res	Type
1	B	142	PHE
1	C	159	PHE
1	D	142	PHE

Sometimes sidechains can be flipped to improve hydrogen bonding and reduce clashes. All (3) such sidechains are listed below:

Mol	Chain	Res	Type
1	C	145	HIS
1	D	145	HIS
1	D	184	GLN

5.3.3 RNA [i](#)

There are no RNA molecules in this entry.

5.4 Non-standard residues in protein, DNA, RNA chains [i](#)

There are no non-standard protein/DNA/RNA residues in this entry.

5.5 Carbohydrates [i](#)

There are no monosaccharides in this entry.

5.6 Ligand geometry [i](#)

Of 11 ligands modelled in this entry, 3 are monoatomic - leaving 8 for Mogul analysis.

In the following table, the Counts columns list the number of bonds (or angles) for which Mogul statistics could be retrieved, the number of bonds (or angles) that are observed in the model and the number of bonds (or angles) that are defined in the Chemical Component Dictionary. The Link column lists molecule types, if any, to which the group is linked. The Z score for a bond length (or angle) is the number of standard deviations the observed value is removed from the expected value. A bond length (or angle) with $|Z| > 2$ is considered an outlier worth inspection. RMSZ is the root-mean-square of all Z scores of the bond lengths (or angles).

Mol	Type	Chain	Res	Link	Bond lengths			Bond angles		
					Counts	RMSZ	# Z > 2	Counts	RMSZ	# Z > 2
3	SAH	B	402	-	24,28,28	1.10	3 (12%)	25,40,40	1.75	4 (16%)
2	TRP	D	401	-	14,16,16	0.83	0	16,22,22	1.05	1 (6%)
3	SAH	A	402	-	24,28,28	1.14	3 (12%)	25,40,40	1.53	2 (8%)
2	TRP	A	401	-	14,16,16	0.82	0	16,22,22	1.13	3 (18%)
2	TRP	C	402	-	14,16,16	0.86	1 (7%)	16,22,22	1.07	1 (6%)
3	SAH	D	402	-	24,28,28	1.20	3 (12%)	25,40,40	1.72	3 (12%)
3	SAH	C	403	-	24,28,28	1.11	3 (12%)	25,40,40	1.52	4 (16%)
2	TRP	B	401	-	14,16,16	0.84	0	16,22,22	1.21	2 (12%)

In the following table, the Chirals column lists the number of chiral outliers, the number of chiral centers analysed, the number of these observed in the model and the number defined in the Chemical Component Dictionary. Similar counts are reported in the Torsion and Rings columns. '-' means no outliers of that kind were identified.

Mol	Type	Chain	Res	Link	Chirals	Torsions	Rings
3	SAH	B	402	-	-	3/11/31/31	0/3/3/3
2	TRP	D	401	-	-	3/7/8/8	0/2/2/2
3	SAH	A	402	-	-	2/11/31/31	0/3/3/3
2	TRP	A	401	-	-	3/7/8/8	0/2/2/2
2	TRP	C	402	-	-	3/7/8/8	0/2/2/2
3	SAH	D	402	-	-	0/11/31/31	0/3/3/3
3	SAH	C	403	-	-	0/11/31/31	0/3/3/3
2	TRP	B	401	-	-	3/7/8/8	0/2/2/2

All (13) bond length outliers are listed below:

Mol	Chain	Res	Type	Atoms	Z	Observed(Å)	Ideal(Å)
3	A	402	SAH	C2-N3	3.61	1.37	1.32
3	D	402	SAH	C2-N3	3.58	1.37	1.32
3	C	403	SAH	C2-N3	3.29	1.37	1.32
3	B	402	SAH	C2-N3	3.01	1.36	1.32
3	D	402	SAH	C2-N1	2.50	1.38	1.33
3	A	402	SAH	C2-N1	2.36	1.38	1.33
3	A	402	SAH	OXT-C	-2.21	1.23	1.30
3	C	403	SAH	C2-N1	2.20	1.38	1.33
3	B	402	SAH	OXT-C	-2.17	1.23	1.30
3	C	403	SAH	OXT-C	-2.15	1.23	1.30
3	D	402	SAH	OXT-C	-2.13	1.23	1.30
3	B	402	SAH	C2-N1	2.11	1.37	1.33
2	C	402	TRP	OXT-C	-2.02	1.23	1.30

All (20) bond angle outliers are listed below:

Mol	Chain	Res	Type	Atoms	Z	Observed(°)	Ideal(°)
3	D	402	SAH	N3-C2-N1	-6.29	118.84	128.68
3	B	402	SAH	N3-C2-N1	-6.19	119.01	128.68
3	A	402	SAH	N3-C2-N1	-5.70	119.77	128.68
3	C	403	SAH	N3-C2-N1	-5.57	119.97	128.68
3	D	402	SAH	C5'-SD-CG	-3.43	91.97	102.27
3	B	402	SAH	C1'-N9-C4	-2.98	121.40	126.64
2	B	401	TRP	OXT-C-CA	2.77	122.81	113.38
3	C	403	SAH	C5'-SD-CG	-2.69	94.18	102.27
2	B	401	TRP	OXT-C-O	-2.61	118.17	124.09
2	A	401	TRP	OXT-C-CA	2.42	121.61	113.38
3	B	402	SAH	OXT-C-O	-2.24	119.01	124.09
3	D	402	SAH	OXT-C-O	-2.22	119.05	124.09
2	D	401	TRP	OXT-C-CA	2.21	120.90	113.38
2	C	402	TRP	OXT-C-CA	2.17	120.79	113.38
3	C	403	SAH	OXT-C-O	-2.14	119.23	124.09
3	B	402	SAH	OXT-C-CA	2.13	120.64	113.38
2	A	401	TRP	OXT-C-O	-2.09	119.35	124.09
2	A	401	TRP	CH2-CZ2-CE2	-2.08	117.09	120.08
3	A	402	SAH	OXT-C-O	-2.06	119.41	124.09
3	C	403	SAH	OXT-C-CA	2.00	120.20	113.38

There are no chirality outliers.

All (17) torsion outliers are listed below:

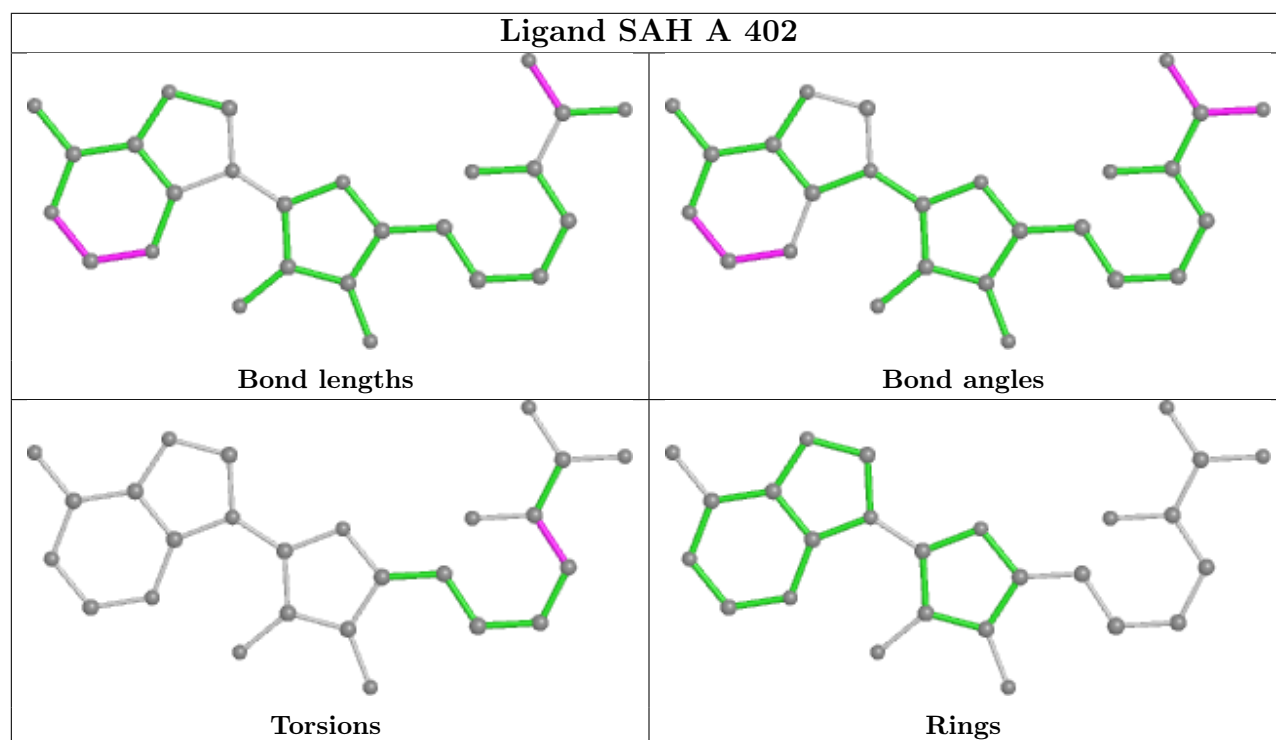
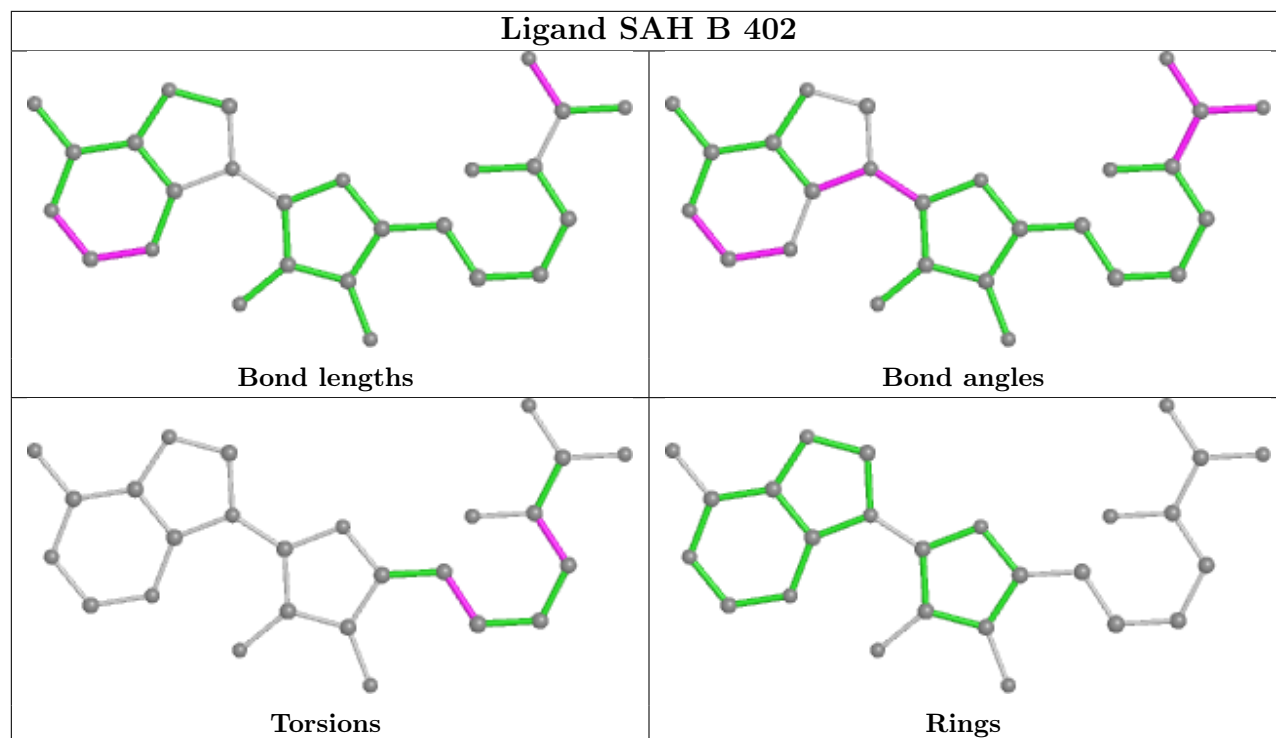
Mol	Chain	Res	Type	Atoms
2	A	401	TRP	O-C-CA-N
2	B	401	TRP	O-C-CA-N
3	A	402	SAH	N-CA-CB-CG
3	A	402	SAH	C-CA-CB-CG
3	B	402	SAH	N-CA-CB-CG
3	B	402	SAH	C-CA-CB-CG
2	A	401	TRP	OXT-C-CA-N
2	C	402	TRP	OXT-C-CA-N
2	B	401	TRP	OXT-C-CA-N
2	D	401	TRP	OXT-C-CA-N
2	C	402	TRP	O-C-CA-N
2	D	401	TRP	O-C-CA-N
2	A	401	TRP	CA-CB-CG-CD1
2	B	401	TRP	CA-CB-CG-CD1
2	C	402	TRP	CA-CB-CG-CD1
2	D	401	TRP	CA-CB-CG-CD1
3	B	402	SAH	C4'-C5'-SD-CG

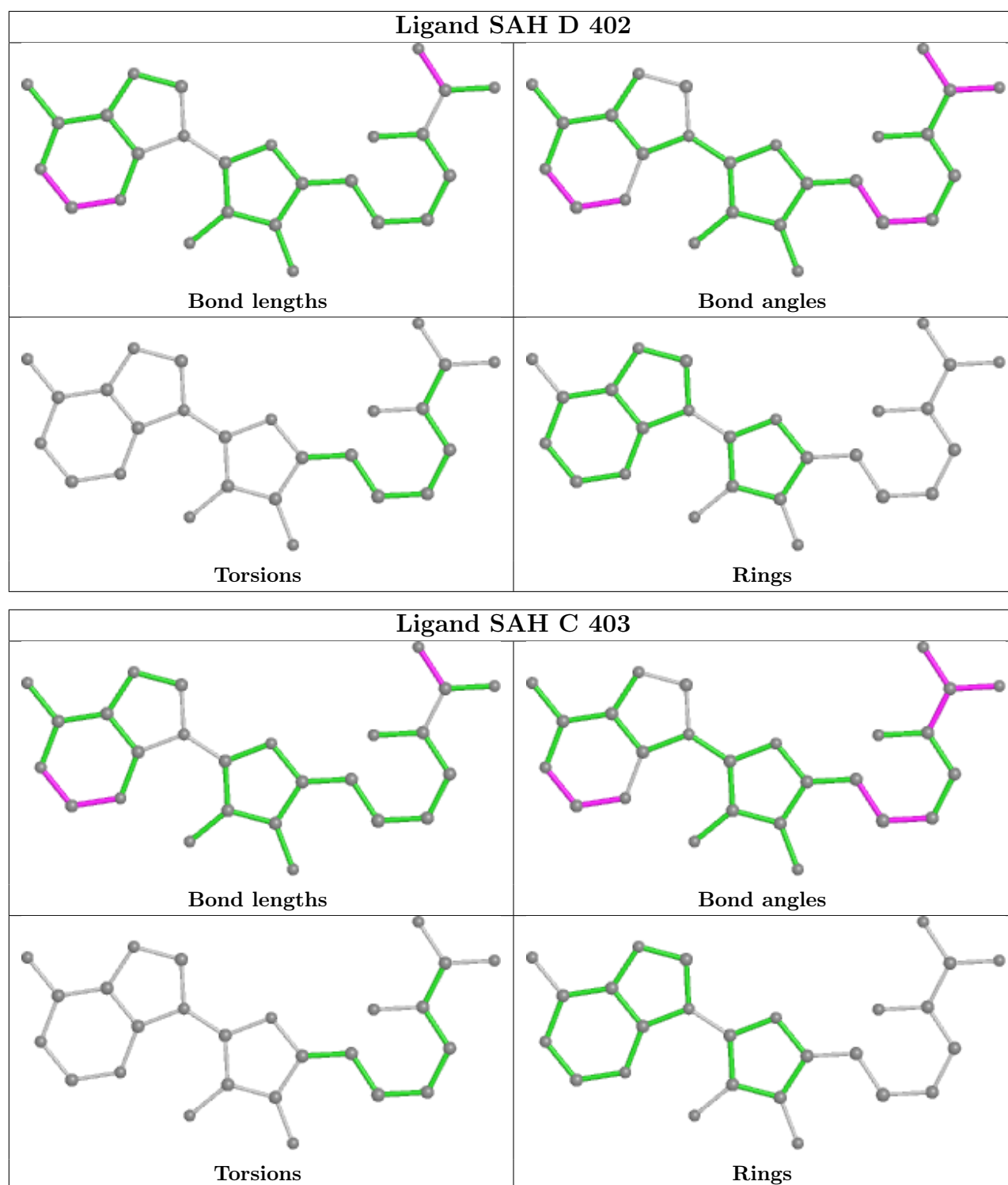
There are no ring outliers.

2 monomers are involved in 2 short contacts:

Mol	Chain	Res	Type	Clashes	Symm-Clashes
2	A	401	TRP	1	0
2	B	401	TRP	1	0

The following is a two-dimensional graphical depiction of Mogul quality analysis of bond lengths, bond angles, torsion angles, and ring geometry for all instances of the Ligand of Interest. In addition, ligands with molecular weight > 250 and outliers as shown on the validation Tables will also be included. For torsion angles, if less than 5% of the Mogul distribution of torsion angles is within 10 degrees of the torsion angle in question, then that torsion angle is considered an outlier. Any bond that is central to one or more torsion angles identified as an outlier by Mogul will be highlighted in the graph. For rings, the root-mean-square deviation (RMSD) between the ring in question and similar rings identified by Mogul is calculated over all ring torsion angles. If the average RMSD is greater than 60 degrees and the minimal RMSD between the ring in question and any Mogul-identified rings is also greater than 60 degrees, then that ring is considered an outlier. The outliers are highlighted in purple. The color gray indicates Mogul did not find sufficient equivalents in the CSD to analyse the geometry.





5.7 Other polymers [\(i\)](#)

There are no such residues in this entry.

5.8 Polymer linkage issues

There are no chain breaks in this entry.

6 Fit of model and data

6.1 Protein, DNA and RNA chains

In the following table, the column labelled ‘#RSRZ > 2’ contains the number (and percentage) of RSRZ outliers, followed by percent RSRZ outliers for the chain as percentile scores relative to all X-ray entries and entries of similar resolution. The OWAB column contains the minimum, median, 95th percentile and maximum values of the occupancy-weighted average B-factor per residue. The column labelled ‘Q < 0.9’ lists the number of (and percentage) of residues with an average occupancy less than 0.9.

Mol	Chain	Analysed	<RSRZ>	#RSRZ>2	OWAB(Å ²)	Q<0.9
1	A	316/323 (97%)	-0.32	2 (0%) 89 87	8, 18, 34, 42	0
1	B	309/323 (95%)	-0.30	2 (0%) 89 87	9, 19, 34, 60	0
1	C	315/323 (97%)	0.20	14 (4%) 34 28	13, 22, 37, 57	0
1	D	318/323 (98%)	-0.04	9 (2%) 53 47	9, 21, 45, 53	0
All	All	1258/1292 (97%)	-0.11	27 (2%) 63 59	8, 20, 39, 60	0

All (27) RSRZ outliers are listed below:

Mol	Chain	Res	Type	RSRZ
1	C	26	LEU	6.5
1	D	126	ILE	4.1
1	C	33	LEU	3.9
1	D	10	ALA	3.7
1	C	27	THR	3.5
1	C	28	ALA	3.3
1	B	89	THR	3.0
1	D	12	ASP	2.9
1	D	9	LEU	2.8
1	D	122	ALA	2.8
1	C	3	LEU	2.8
1	D	275	ALA	2.8
1	C	268	ASP	2.7
1	D	264	VAL	2.7
1	C	292	VAL	2.5
1	D	5	LEU	2.4
1	B	151	HIS	2.4
1	C	151	HIS	2.3
1	C	206	TYR	2.3
1	C	1	MET	2.2
1	D	224	VAL	2.2

Continued on next page...

Continued from previous page...

Mol	Chain	Res	Type	RSRZ
1	A	6	ALA	2.1
1	C	256	ALA	2.1
1	A	320	VAL	2.1
1	C	14	ALA	2.1
1	C	254	LEU	2.1
1	C	29	THR	2.0

6.2 Non-standard residues in protein, DNA, RNA chains [i](#)

There are no non-standard protein/DNA/RNA residues in this entry.

6.3 Carbohydrates [i](#)

There are no monosaccharides in this entry.

6.4 Ligands [i](#)

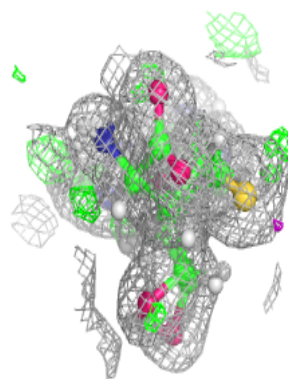
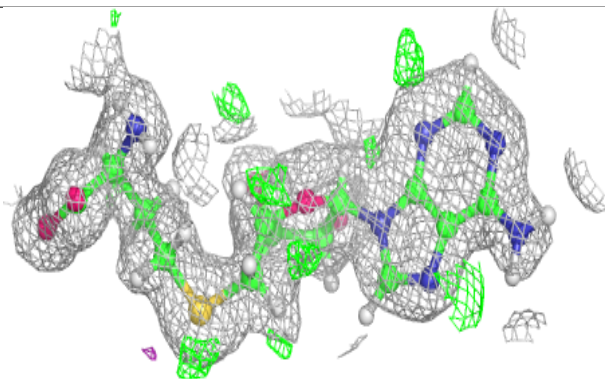
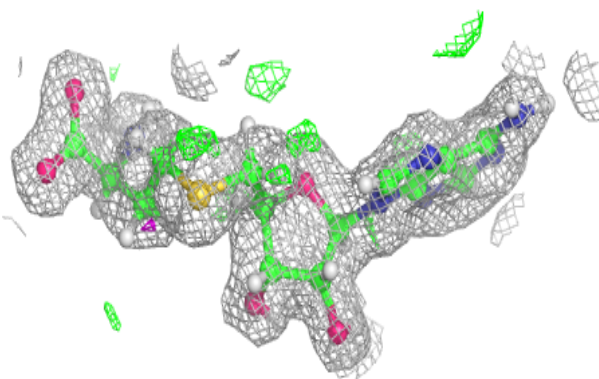
In the following table, the Atoms column lists the number of modelled atoms in the group and the number defined in the chemical component dictionary. The B-factors column lists the minimum, median, 95th percentile and maximum values of B factors of atoms in the group. The column labelled 'Q< 0.9' lists the number of atoms with occupancy less than 0.9.

Mol	Type	Chain	Res	Atoms	RSCC	RSR	B-factors(Å ²)	Q<0.9
2	TRP	C	402	15/15	0.86	0.12	26,34,42,43	0
2	TRP	D	401	15/15	0.93	0.09	14,21,30,35	0
3	SAH	C	403	26/26	0.94	0.08	11,16,25,27	0
3	SAH	D	402	26/26	0.94	0.08	11,20,26,30	0
3	SAH	A	402	26/26	0.95	0.10	11,15,20,20	0
3	SAH	B	402	26/26	0.95	0.12	12,16,29,30	0
2	TRP	B	401	15/15	0.96	0.10	12,17,21,25	0
2	TRP	A	401	15/15	0.97	0.07	7,10,14,17	0
4	MG	C	404	1/1	0.98	0.14	34,34,34,34	0
5	CL	C	401	1/1	0.98	0.22	22,22,22,22	0
4	MG	B	403	1/1	0.99	0.04	12,12,12,12	0

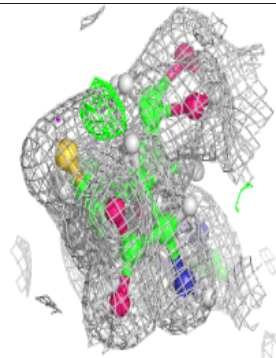
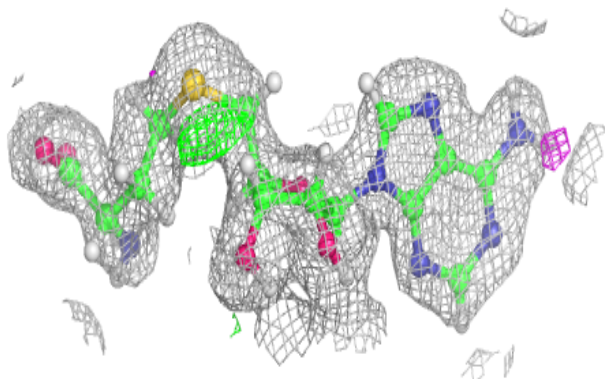
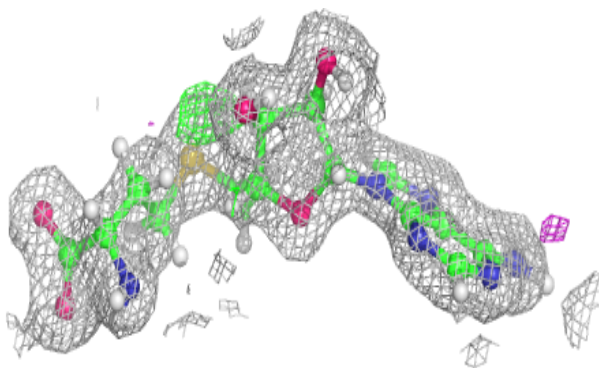
The following is a graphical depiction of the model fit to experimental electron density of all instances of the Ligand of Interest. In addition, ligands with molecular weight > 250 and outliers as shown on the geometry validation Tables will also be included. Each fit is shown from different orientation to approximate a three-dimensional view.

Electron density around SAH C 403:

$2mF_o-DF_c$ (at 0.7 rmsd) in gray
 mF_o-DF_c (at 3 rmsd) in purple (negative)
and green (positive)

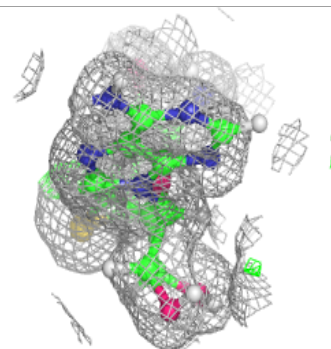
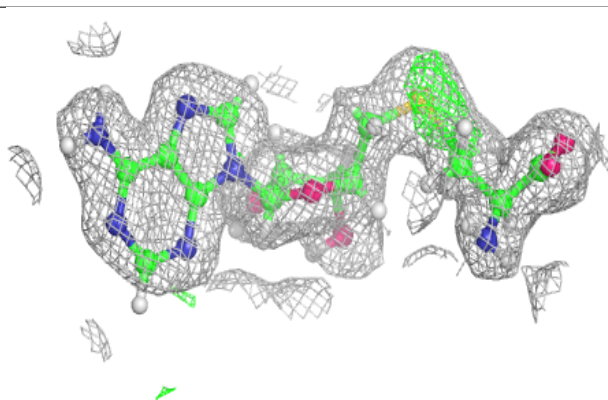
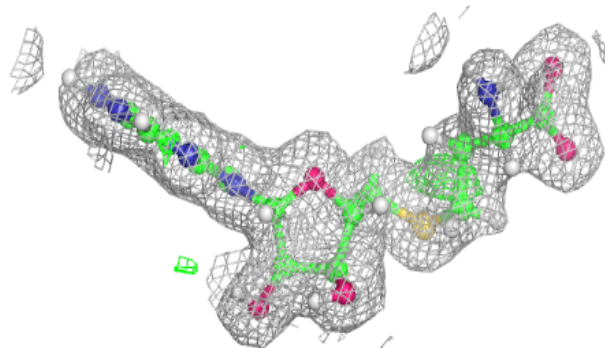
**Electron density around SAH D 402:**

$2mF_o-DF_c$ (at 0.7 rmsd) in gray
 mF_o-DF_c (at 3 rmsd) in purple (negative)
and green (positive)

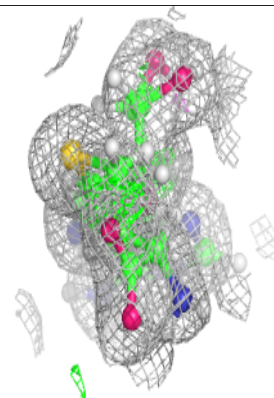
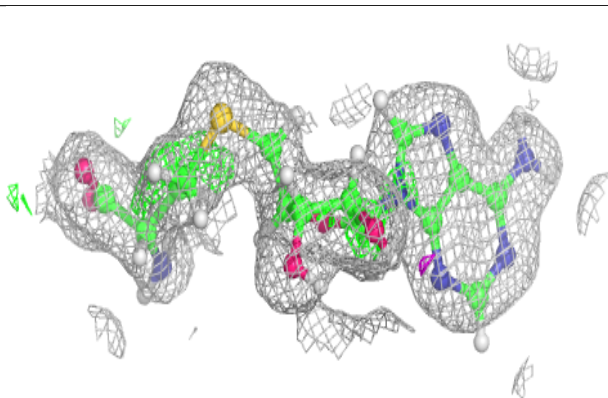
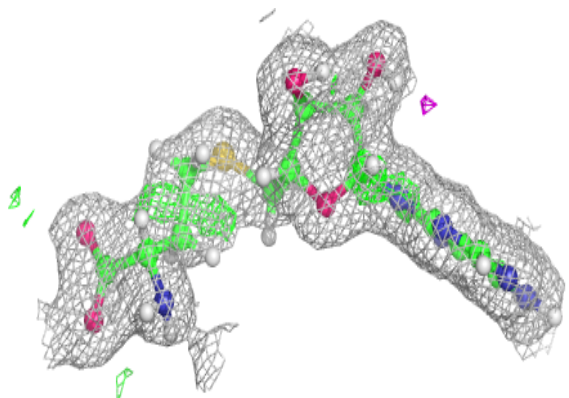


Electron density around SAH A 402:

$2mF_o-DF_c$ (at 0.7 rmsd) in gray
 mF_o-DF_c (at 3 rmsd) in purple (negative)
and green (positive)

**Electron density around SAH B 402:**

$2mF_o-DF_c$ (at 0.7 rmsd) in gray
 mF_o-DF_c (at 3 rmsd) in purple (negative)
and green (positive)



6.5 Other polymers [i](#)

There are no such residues in this entry.