



Full wwPDB X-ray Structure Validation Report ⓘ

Sep 10, 2023 – 12:27 PM EDT

PDB ID : 4KZA
Title : Crystal structure of AmpC beta-lactamase in complex with fragment 48 (3-(cyclopropylsulfamoyl)thiophene-2-carboxylic acid)
Authors : Eidam, O.; Barelier, S.; Fish, I.; Shoichet, B.K.
Deposited on : 2013-05-29
Resolution : 1.60 Å(reported)

This is a Full wwPDB X-ray Structure Validation Report for a publicly released PDB entry.

We welcome your comments at validation@mail.wwpdb.org

A user guide is available at

<https://www.wwpdb.org/validation/2017/XrayValidationReportHelp>

with specific help available everywhere you see the ⓘ symbol.

The types of validation reports are described at

<http://www.wwpdb.org/validation/2017/FAQs#types>.

The following versions of software and data (see [references ⓘ](#)) were used in the production of this report:

MolProbity : 4.02b-467
Mogul : 1.8.5 (274361), CSD as541be (2020)
Xtriage (Phenix) : 1.13
EDS : 2.35.1
Percentile statistics : 20191225.v01 (using entries in the PDB archive December 25th 2019)
Refmac : 5.8.0158
CCP4 : 7.0.044 (Gargrove)
Ideal geometry (proteins) : Engh & Huber (2001)
Ideal geometry (DNA, RNA) : Parkinson et al. (1996)
Validation Pipeline (wwPDB-VP) : 2.35.1

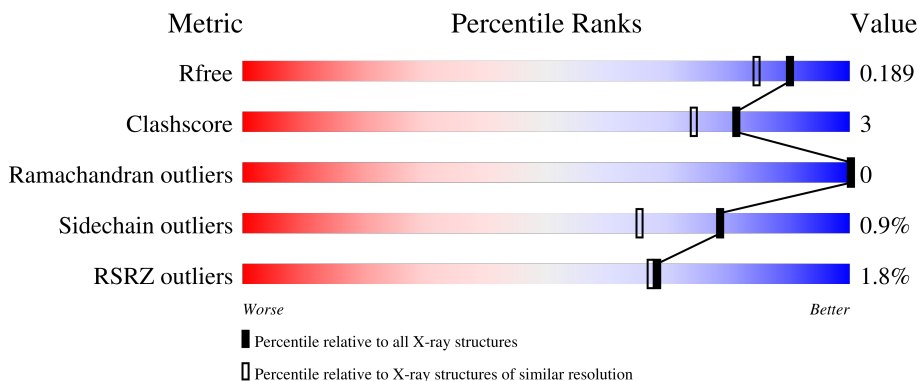
1 Overall quality at a glance

The following experimental techniques were used to determine the structure:

X-RAY DIFFRACTION

The reported resolution of this entry is 1.60 Å.

Percentile scores (ranging between 0-100) for global validation metrics of the entry are shown in the following graphic. The table shows the number of entries on which the scores are based.



Metric	Whole archive (#Entries)	Similar resolution (#Entries, resolution range(Å))
R_{free}	130704	3398 (1.60-1.60)
Clashscore	141614	3665 (1.60-1.60)
Ramachandran outliers	138981	3564 (1.60-1.60)
Sidechain outliers	138945	3563 (1.60-1.60)
RSRZ outliers	127900	3321 (1.60-1.60)

The table below summarises the geometric issues observed across the polymeric chains and their fit to the electron density. The red, orange, yellow and green segments of the lower bar indicate the fraction of residues that contain outliers for ≥ 3 , 2, 1 and 0 types of geometric quality criteria respectively. A grey segment represents the fraction of residues that are not modelled. The numeric value for each fraction is indicated below the corresponding segment, with a dot representing fractions $\leq 5\%$. The upper red bar (where present) indicates the fraction of residues that have poor fit to the electron density. The numeric value is given above the bar.

Mol	Chain	Length	Quality of chain
1	A	358	 92% 8%
1	B	358	 94% 6%

2 Entry composition [i](#)

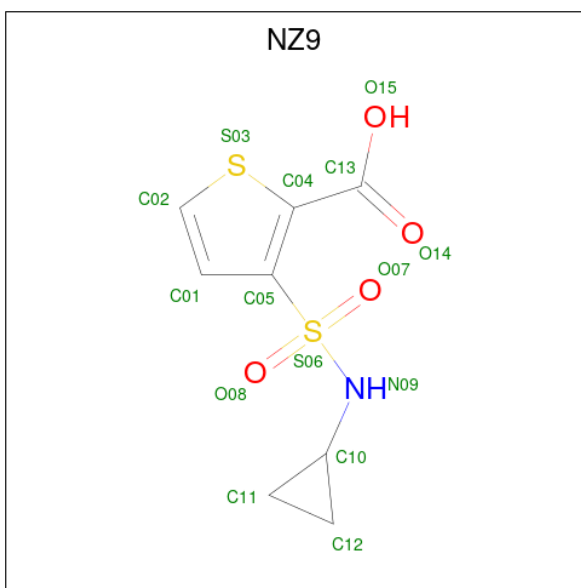
There are 4 unique types of molecules in this entry. The entry contains 6492 atoms, of which 0 are hydrogens and 0 are deuteriums.

In the tables below, the ZeroOcc column contains the number of atoms modelled with zero occupancy, the AltConf column contains the number of residues with at least one atom in alternate conformation and the Trace column contains the number of residues modelled with at most 2 atoms.

- Molecule 1 is a protein called Beta-lactamase.

Mol	Chain	Residues	Atoms					ZeroOcc	AltConf	Trace
			Total	C	N	O	S			
1	A	358	Total	C	N	O	S	0	6	0
			2809	1809	478	516	6			
1	B	358	Total	C	N	O	S	0	3	0
			2785	1792	471	516	6			

- Molecule 2 is 3-(cyclopropylsulfamoyl)thiophene-2-carboxylic acid (three-letter code: NZ9) (formula: C₈H₉NO₄S₂).



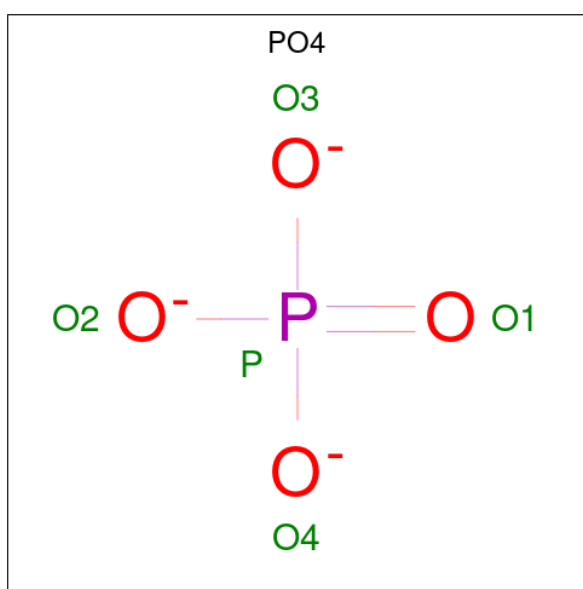
Mol	Chain	Residues	Atoms					ZeroOcc	AltConf
			Total	C	N	O	S		
2	A	1	Total	C	N	O	S	0	0
			15	8	1	4	2		
2	A	1	Total	C	N	O	S	0	0
			15	8	1	4	2		
2	A	1	Total	C	N	O	S	0	0
			15	8	1	4	2		
2	A	1	Total	C	N	O	S	0	0
			15	8	1	4	2		

Continued on next page...

Continued from previous page...

Mol	Chain	Residues	Atoms					ZeroOcc	AltConf
2	A	1	Total	C	N	O	S	0	0
			15	8	1	4	2		
2	B	1	Total	C	N	O	S	0	0
			15	8	1	4	2		
2	B	1	Total	C	N	O	S	0	1
			15	8	1	4	2		
2	B	1	Total	C	N	O	S	0	0
			15	8	1	4	2		

- Molecule 3 is PHOSPHATE ION (three-letter code: PO4) (formula: O₄P).



Mol	Chain	Residues	Atoms			ZeroOcc	AltConf
3	A	1	Total	O	P	0	0
			5	4	1		

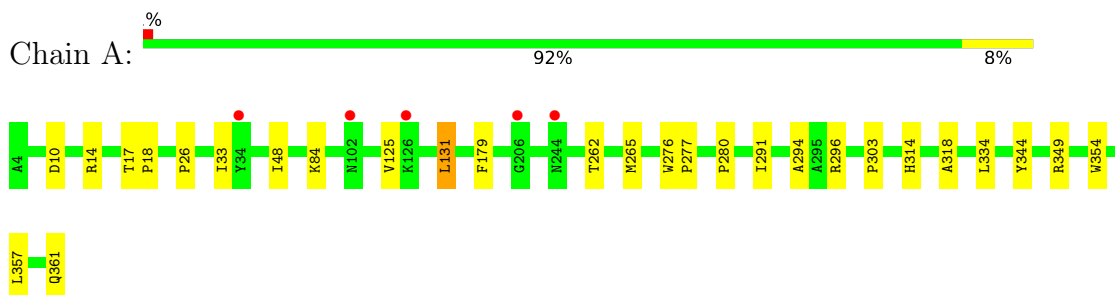
- Molecule 4 is water.

Mol	Chain	Residues	Atoms		ZeroOcc	AltConf
4	A	411	Total	O	0	1
			411	411		
4	B	362	Total	O	0	0
			362	362		

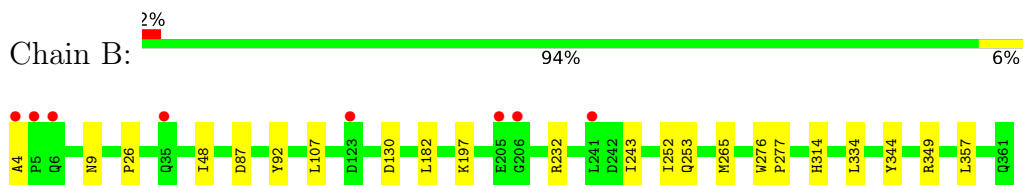
3 Residue-property plots [i](#)

These plots are drawn for all protein, RNA, DNA and oligosaccharide chains in the entry. The first graphic for a chain summarises the proportions of the various outlier classes displayed in the second graphic. The second graphic shows the sequence view annotated by issues in geometry and electron density. Residues are color-coded according to the number of geometric quality criteria for which they contain at least one outlier: green = 0, yellow = 1, orange = 2 and red = 3 or more. A red dot above a residue indicates a poor fit to the electron density ($RSRZ > 2$). Stretches of 2 or more consecutive residues without any outlier are shown as a green connector. Residues present in the sample, but not in the model, are shown in grey.

- Molecule 1: Beta-lactamase



- Molecule 1: Beta-lactamase



4 Data and refinement statistics

Property	Value	Source
Space group	C 1 2 1	Depositor
Cell constants a, b, c, α , β , γ	118.62Å 76.63Å 97.98Å 90.00° 116.91° 90.00°	Depositor
Resolution (Å)	29.55 – 1.60 29.55 – 1.60	Depositor EDS
% Data completeness (in resolution range)	99.2 (29.55-1.60) 99.2 (29.55-1.60)	Depositor EDS
R_{merge}	0.04	Depositor
R_{sym}	(Not available)	Depositor
$\langle I/\sigma(I) \rangle$ ¹	2.59 (at 1.60Å)	Xtrriage
Refinement program	PHENIX 1.8_1069	Depositor
R, R_{free}	0.160 , 0.189 0.160 , 0.189	Depositor DCC
R_{free} test set	3764 reflections (3.68%)	wwPDB-VP
Wilson B-factor (Å ²)	16.4	Xtrriage
Anisotropy	0.456	Xtrriage
Bulk solvent k_{sol} (e/Å ³), B_{sol} (Å ²)	0.41 , 56.2	EDS
L-test for twinning ²	$\langle L \rangle = 0.49$, $\langle L^2 \rangle = 0.32$	Xtrriage
Estimated twinning fraction	No twinning to report.	Xtrriage
F_o, F_c correlation	0.97	EDS
Total number of atoms	6492	wwPDB-VP
Average B, all atoms (Å ²)	19.0	wwPDB-VP

Xtrriage's analysis on translational NCS is as follows: *The largest off-origin peak in the Patterson function is 10.47% of the height of the origin peak. No significant pseudotranslation is detected.*

¹Intensities estimated from amplitudes.

²Theoretical values of $\langle |L| \rangle$, $\langle L^2 \rangle$ for acentric reflections are 0.5, 0.333 respectively for untwinned datasets, and 0.375, 0.2 for perfectly twinned datasets.

5 Model quality [i](#)

5.1 Standard geometry [i](#)

Bond lengths and bond angles in the following residue types are not validated in this section: NZ9, PO4

The Z score for a bond length (or angle) is the number of standard deviations the observed value is removed from the expected value. A bond length (or angle) with $|Z| > 5$ is considered an outlier worth inspection. RMSZ is the root-mean-square of all Z scores of the bond lengths (or angles).

Mol	Chain	Bond lengths		Bond angles	
		RMSZ	# Z >5	RMSZ	# Z >5
1	A	0.63	0/2889	0.74	2/3952 (0.1%)
1	B	0.60	0/2868	0.72	1/3927 (0.0%)
All	All	0.62	0/5757	0.73	3/7879 (0.0%)

There are no bond length outliers.

All (3) bond angle outliers are listed below:

Mol	Chain	Res	Type	Atoms	Z	Observed(°)	Ideal(°)
1	A	179	PHE	CB-CG-CD2	-5.36	117.05	120.80
1	A	265	MET	CG-SD-CE	-5.19	91.90	100.20
1	B	130	ASP	CB-CG-OD2	-5.17	113.64	118.30

There are no chirality outliers.

There are no planarity outliers.

5.2 Too-close contacts [i](#)

In the following table, the Non-H and H(model) columns list the number of non-hydrogen atoms and hydrogen atoms in the chain respectively. The H(added) column lists the number of hydrogen atoms added and optimized by MolProbity. The Clashes column lists the number of clashes within the asymmetric unit, whereas Symm-Clashes lists symmetry-related clashes.

Mol	Chain	Non-H	H(model)	H(added)	Clashes	Symm-Clashes
1	A	2809	0	2738	16	0
1	B	2785	0	2713	13	0
2	A	75	0	40	2	0
2	B	45	0	24	1	0
3	A	5	0	0	0	0
4	A	411	0	0	3	0

Continued on next page...

Continued from previous page...

Mol	Chain	Non-H	H(model)	H(added)	Clashes	Symm-Clashes
4	B	362	0	0	2	0
All	All	6492	0	5515	29	0

The all-atom clashscore is defined as the number of clashes found per 1000 atoms (including hydrogen atoms). The all-atom clashscore for this structure is 3.

All (29) close contacts within the same asymmetric unit are listed below, sorted by their clash magnitude.

Atom-1	Atom-2	Interatomic distance (Å)	Clash overlap (Å)
1:A:296:ARG:NH2	4:A:694:HOH:O	2.20	0.71
2:A:401:NZ9:C05	2:A:401:NZ9:H5	2.21	0.71
1:A:280:PRO:HG3	1:A:354:TRP:CZ2	2.37	0.59
1:A:10:ASP:O	1:A:14[B]:ARG:HG2	2.05	0.56
1:A:294:ALA:HA	4:A:738:HOH:O	2.07	0.54
1:B:334:LEU:HG	1:B:357:LEU:HD22	1.88	0.54
1:A:125:VAL:HG11	1:A:131:LEU:HD23	1.91	0.52
1:A:344:TYR:CE1	1:A:349:ARG:HG2	2.45	0.52
1:B:26:PRO:HB3	1:B:48:ILE:HD11	1.93	0.51
1:B:87:ASP:OD2	1:B:92:TYR:OH	2.22	0.51
1:B:344:TYR:CZ	1:B:349:ARG:HG2	2.47	0.50
1:A:344:TYR:CZ	1:A:349:ARG:HG2	2.47	0.49
1:B:276:TRP:CD2	1:B:277:PRO:HA	2.47	0.49
1:A:276:TRP:CD2	1:A:277:PRO:HA	2.49	0.48
1:B:253:GLN:NE2	2:B:402[A]:NZ9:O07	2.42	0.47
1:A:303:PRO:HD3	1:B:107:LEU:HD22	1.96	0.47
1:A:33:ILE:HD12	1:A:33:ILE:N	2.30	0.45
1:A:17:THR:HB	1:A:18:PRO:HD3	1.98	0.45
1:B:182:LEU:O	1:B:232:ARG:NH1	2.50	0.45
1:A:334:LEU:HG	1:A:357:LEU:HD22	1.99	0.43
1:A:26:PRO:HB3	1:A:48:ILE:HD11	2.00	0.42
1:A:84:LYS:NZ	4:A:647:HOH:O	2.48	0.42
1:A:318:ALA:HB3	2:A:404:NZ9:H8	2.02	0.41
1:B:243:ILE:CD1	1:B:252:ILE:HD12	2.50	0.41
1:B:4:ALA:HB3	1:B:9:ASN:OD1	2.20	0.41
1:B:197:LYS:NZ	4:B:766:HOH:O	2.54	0.41
1:B:265:MET:HG3	4:B:517:HOH:O	2.21	0.40
1:B:344:TYR:CE1	1:B:349:ARG:HG2	2.57	0.40
1:A:291:ILE:HG23	1:A:296:ARG:NH1	2.37	0.40

There are no symmetry-related clashes.

5.3 Torsion angles [i](#)

5.3.1 Protein backbone [i](#)

In the following table, the Percentiles column shows the percent Ramachandran outliers of the chain as a percentile score with respect to all X-ray entries followed by that with respect to entries of similar resolution.

The Analysed column shows the number of residues for which the backbone conformation was analysed, and the total number of residues.

Mol	Chain	Analysed	Favoured	Allowed	Outliers	Percentiles	
1	A	361/358 (101%)	355 (98%)	6 (2%)	0	100	100
1	B	359/358 (100%)	352 (98%)	7 (2%)	0	100	100
All	All	720/716 (101%)	707 (98%)	13 (2%)	0	100	100

There are no Ramachandran outliers to report.

5.3.2 Protein sidechains [i](#)

In the following table, the Percentiles column shows the percent sidechain outliers of the chain as a percentile score with respect to all X-ray entries followed by that with respect to entries of similar resolution.

The Analysed column shows the number of residues for which the sidechain conformation was analysed, and the total number of residues.

Mol	Chain	Analysed	Rotameric	Outliers	Percentiles	
1	A	286/292 (98%)	282 (99%)	4 (1%)	67	47
1	B	286/292 (98%)	285 (100%)	1 (0%)	92	87
All	All	572/584 (98%)	567 (99%)	5 (1%)	78	65

All (5) residues with a non-rotameric sidechain are listed below:

Mol	Chain	Res	Type
1	A	131	LEU
1	A	262	THR
1	A	314	HIS
1	A	361	GLN
1	B	314	HIS

Sometimes sidechains can be flipped to improve hydrogen bonding and reduce clashes. There are no such sidechains identified.

5.3.3 RNA [i](#)

There are no RNA molecules in this entry.

5.4 Non-standard residues in protein, DNA, RNA chains [i](#)

There are no non-standard protein/DNA/RNA residues in this entry.

5.5 Carbohydrates [i](#)

There are no monosaccharides in this entry.

5.6 Ligand geometry [i](#)

9 ligands are modelled in this entry.

In the following table, the Counts columns list the number of bonds (or angles) for which Mogul statistics could be retrieved, the number of bonds (or angles) that are observed in the model and the number of bonds (or angles) that are defined in the Chemical Component Dictionary. The Link column lists molecule types, if any, to which the group is linked. The Z score for a bond length (or angle) is the number of standard deviations the observed value is removed from the expected value. A bond length (or angle) with $|Z| > 2$ is considered an outlier worth inspection. RMSZ is the root-mean-square of all Z scores of the bond lengths (or angles).

Mol	Type	Chain	Res	Link	Bond lengths			Bond angles		
					Counts	RMSZ	# Z > 2	Counts	RMSZ	# Z > 2
2	NZ9	B	401	-	12,16,16	3.20	4 (33%)	14,24,24	1.94	4 (28%)
2	NZ9	A	401	-	12,16,16	2.64	3 (25%)	14,24,24	2.62	6 (42%)
2	NZ9	B	402[A]	-	12,16,16	3.06	5 (41%)	14,24,24	1.82	4 (28%)
2	NZ9	A	405	-	12,16,16	3.30	4 (33%)	14,24,24	1.76	4 (28%)
2	NZ9	A	403	-	12,16,16	3.26	3 (25%)	14,24,24	1.52	4 (28%)
2	NZ9	B	403	-	12,16,16	3.22	3 (25%)	14,24,24	1.95	4 (28%)
3	PO4	A	406	-	4,4,4	1.24	0	6,6,6	1.24	1 (16%)
2	NZ9	A	402	-	12,16,16	3.45	5 (41%)	14,24,24	1.65	4 (28%)
2	NZ9	A	404	-	12,16,16	3.72	6 (50%)	14,24,24	1.75	5 (35%)

In the following table, the Chirals column lists the number of chiral outliers, the number of chiral centers analysed, the number of these observed in the model and the number defined in the Chemical Component Dictionary. Similar counts are reported in the Torsion and Rings columns. '-' means no outliers of that kind were identified.

Mol	Type	Chain	Res	Link	Chirals	Torsions	Rings
2	NZ9	B	401	-	-	2/3/17/17	0/2/2/2
2	NZ9	A	401	-	-	2/3/17/17	0/2/2/2
2	NZ9	B	402[A]	-	-	0/3/17/17	0/2/2/2
2	NZ9	A	405	-	-	0/3/17/17	0/2/2/2
2	NZ9	A	403	-	-	0/3/17/17	0/2/2/2
2	NZ9	B	403	-	-	0/3/17/17	0/2/2/2
2	NZ9	A	402	-	-	3/3/17/17	0/2/2/2
2	NZ9	A	404	-	-	0/3/17/17	0/2/2/2

All (33) bond length outliers are listed below:

Mol	Chain	Res	Type	Atoms	Z	Observed(Å)	Ideal(Å)
2	A	404	NZ9	C05-S06	-10.50	1.62	1.77
2	A	402	NZ9	C05-S06	-9.89	1.63	1.77
2	A	403	NZ9	C05-S06	-9.50	1.63	1.77
2	B	401	NZ9	C05-S06	-9.36	1.64	1.77
2	A	405	NZ9	C05-S06	-9.27	1.64	1.77
2	B	403	NZ9	C05-S06	-9.14	1.64	1.77
2	B	402[A]	NZ9	C05-S06	-8.31	1.65	1.77
2	A	401	NZ9	C05-S06	-6.61	1.68	1.77
2	A	404	NZ9	S06-N09	5.18	1.70	1.61
2	B	403	NZ9	S06-N09	5.16	1.70	1.61
2	A	403	NZ9	S06-N09	4.89	1.70	1.61
2	A	405	NZ9	S06-N09	4.80	1.69	1.61
2	A	402	NZ9	S06-N09	4.63	1.69	1.61
2	A	401	NZ9	S06-N09	4.49	1.69	1.61
2	B	402[A]	NZ9	S06-N09	4.41	1.69	1.61
2	B	401	NZ9	S06-N09	3.85	1.68	1.61
2	A	401	NZ9	C10-N09	-3.28	1.42	1.47
2	A	404	NZ9	O15-C13	-2.87	1.21	1.30
2	B	402[A]	NZ9	O08-S06	-2.29	1.40	1.43
2	A	404	NZ9	O08-S06	-2.29	1.40	1.43
2	B	403	NZ9	C12-C10	2.25	1.53	1.48
2	B	401	NZ9	O07-S06	-2.22	1.41	1.43
2	A	402	NZ9	O07-S06	-2.21	1.41	1.43
2	A	403	NZ9	C12-C10	2.19	1.53	1.48
2	A	405	NZ9	O15-C13	-2.19	1.23	1.30
2	B	402[A]	NZ9	C11-C10	2.17	1.53	1.48
2	B	401	NZ9	O15-C13	-2.11	1.24	1.30
2	A	404	NZ9	C11-C10	2.09	1.53	1.48
2	A	405	NZ9	C12-C10	2.09	1.53	1.48
2	B	402[A]	NZ9	O15-C13	-2.09	1.24	1.30
2	A	404	NZ9	C12-C10	2.04	1.53	1.48

Continued on next page...

Continued from previous page...

Mol	Chain	Res	Type	Atoms	Z	Observed(Å)	Ideal(Å)
2	A	402	NZ9	O15-C13	-2.03	1.24	1.30
2	A	402	NZ9	C11-C10	2.02	1.53	1.48

All (36) bond angle outliers are listed below:

Mol	Chain	Res	Type	Atoms	Z	Observed(°)	Ideal(°)
2	A	401	NZ9	C05-S06-N09	6.21	117.62	108.30
2	A	401	NZ9	O07-S06-N09	-4.85	98.10	106.88
2	B	401	NZ9	O07-S06-C05	4.54	115.12	107.66
2	B	403	NZ9	C11-C10-N09	4.13	124.60	118.51
2	B	402[A]	NZ9	C12-C10-N09	3.99	124.39	118.51
2	B	403	NZ9	O07-S06-C05	3.70	113.75	107.66
2	A	402	NZ9	O07-S06-C05	3.48	113.38	107.66
2	B	401	NZ9	O08-S06-C05	-3.38	102.10	107.66
2	B	402[A]	NZ9	O15-C13-O14	3.34	130.75	123.35
2	A	405	NZ9	O08-S06-N09	-3.32	100.88	106.88
2	A	404	NZ9	O07-S06-N09	-3.14	101.19	106.88
2	A	404	NZ9	O08-S06-C05	3.13	112.80	107.66
2	A	405	NZ9	O07-S06-C05	2.97	112.54	107.66
2	A	401	NZ9	O08-S06-N09	-2.94	101.55	106.88
2	B	402[A]	NZ9	C10-N09-S06	-2.85	117.15	122.08
2	A	401	NZ9	O15-C13-O14	2.76	129.48	123.35
2	A	404	NZ9	C11-C10-N09	2.73	122.53	118.51
3	A	406	PO4	O4-P-O3	2.68	116.57	107.97
2	A	402	NZ9	O15-C13-O14	2.66	129.25	123.35
2	A	401	NZ9	O07-S06-C05	2.64	112.00	107.66
2	A	402	NZ9	O08-S06-N09	-2.55	102.27	106.88
2	A	405	NZ9	C11-C10-N09	2.52	122.23	118.51
2	A	403	NZ9	O15-C13-O14	2.51	128.92	123.35
2	B	402[A]	NZ9	C11-C10-N09	2.47	122.15	118.51
2	A	405	NZ9	O15-C13-O14	2.45	128.79	123.35
2	A	402	NZ9	C11-C10-N09	2.41	122.05	118.51
2	A	403	NZ9	C11-C10-N09	2.39	122.03	118.51
2	B	401	NZ9	O15-C13-O14	2.39	128.65	123.35
2	A	404	NZ9	C12-C10-N09	2.29	121.88	118.51
2	A	404	NZ9	C10-N09-S06	-2.27	118.14	122.08
2	B	403	NZ9	C10-N09-S06	2.23	125.94	122.08
2	B	401	NZ9	O08-S06-O07	-2.19	116.85	119.55
2	A	403	NZ9	C12-C10-N09	2.18	121.73	118.51
2	A	403	NZ9	C10-N09-S06	-2.14	118.38	122.08
2	B	403	NZ9	O08-S06-N09	-2.14	103.02	106.88
2	A	401	NZ9	C12-C10-N09	-2.04	115.51	118.51

There are no chirality outliers.

All (7) torsion outliers are listed below:

Mol	Chain	Res	Type	Atoms
2	A	401	NZ9	C10-N09-S06-O08
2	A	402	NZ9	C10-N09-S06-O07
2	A	401	NZ9	C10-N09-S06-C05
2	A	402	NZ9	C10-N09-S06-C05
2	B	401	NZ9	C10-N09-S06-C05
2	B	401	NZ9	C10-N09-S06-O08
2	A	402	NZ9	C10-N09-S06-O08

There are no ring outliers.

3 monomers are involved in 3 short contacts:

Mol	Chain	Res	Type	Clashes	Symm-Clashes
2	A	401	NZ9	1	0
2	B	402[A]	NZ9	1	0
2	A	404	NZ9	1	0

5.7 Other polymers [i](#)

There are no such residues in this entry.

5.8 Polymer linkage issues [i](#)

There are no chain breaks in this entry.

6 Fit of model and data [i](#)

6.1 Protein, DNA and RNA chains [i](#)

In the following table, the column labelled ‘#RSRZ > 2’ contains the number (and percentage) of RSRZ outliers, followed by percent RSRZ outliers for the chain as percentile scores relative to all X-ray entries and entries of similar resolution. The OWAB column contains the minimum, median, 95th percentile and maximum values of the occupancy-weighted average B-factor per residue. The column labelled ‘Q < 0.9’ lists the number of (and percentage) of residues with an average occupancy less than 0.9.

Mol	Chain	Analysed	<RSRZ>	#RSRZ>2	OWAB(Å ²)	Q<0.9
1	A	358/358 (100%)	-0.25	5 (1%) 75 75	7, 15, 31, 46	0
1	B	358/358 (100%)	-0.22	8 (2%) 62 60	9, 17, 31, 56	0
All	All	716/716 (100%)	-0.24	13 (1%) 68 67	7, 16, 31, 56	0

All (13) RSRZ outliers are listed below:

Mol	Chain	Res	Type	RSRZ
1	B	5	PRO	6.3
1	B	4	ALA	5.8
1	B	6	GLN	4.6
1	B	205	GLU	4.4
1	A	126	LYS	4.0
1	B	206	GLY	3.4
1	A	34	TYR	3.1
1	B	123[A]	ASP	2.9
1	A	244	ASN	2.7
1	A	102	ASN	2.4
1	A	206	GLY	2.1
1	B	35	GLN	2.1
1	B	241	LEU	2.1

6.2 Non-standard residues in protein, DNA, RNA chains [i](#)

There are no non-standard protein/DNA/RNA residues in this entry.

6.3 Carbohydrates [i](#)

There are no monosaccharides in this entry.

6.4 Ligands [i](#)

In the following table, the Atoms column lists the number of modelled atoms in the group and the number defined in the chemical component dictionary. The B-factors column lists the minimum, median, 95th percentile and maximum values of B factors of atoms in the group. The column labelled 'Q<0.9' lists the number of atoms with occupancy less than 0.9.

Mol	Type	Chain	Res	Atoms	RSCC	RSR	B-factors(Å ²)	Q<0.9
2	NZ9	A	401	15/15	0.89	0.12	12,20,28,31	0
2	NZ9	A	405	15/15	0.89	0.16	19,28,51,52	15
2	NZ9	B	403	15/15	0.89	0.14	22,29,53,54	15
3	PO4	A	406	5/5	0.89	0.19	17,23,31,33	5
2	NZ9	A	402	15/15	0.92	0.18	22,31,37,37	15
2	NZ9	B	402[A]	15/15	0.92	0.12	15,20,27,30	15
2	NZ9	A	403	15/15	0.96	0.14	14,20,28,28	15
2	NZ9	A	404	15/15	0.96	0.10	12,20,34,36	15
2	NZ9	B	401	15/15	0.97	0.08	18,22,29,30	15

6.5 Other polymers [i](#)

There are no such residues in this entry.