



Full wwPDB X-ray Structure Validation Report ⓘ

Dec 10, 2022 – 11:18 PM EST

PDB ID : 4KXC
Title : Crystal structure of human aminopeptidase A complexed with glutamate
Authors : Yang, Y.; Liu, C.; Lin, Y.Y.; Li, F.
Deposited on : 2013-05-25
Resolution : 2.40 Å(reported)

This is a Full wwPDB X-ray Structure Validation Report for a publicly released PDB entry.

We welcome your comments at validation@mail.wwpdb.org

A user guide is available at

<https://www.wwpdb.org/validation/2017/XrayValidationReportHelp>

with specific help available everywhere you see the ⓘ symbol.

The types of validation reports are described at

<http://www.wwpdb.org/validation/2017/FAQs#types>.

The following versions of software and data (see [references ⓘ](#)) were used in the production of this report:

MolProbity : 4.02b-467
Mogul : 1.8.5 (274361), CSD as541be (2020)
Xtriage (Phenix) : 1.13
EDS : 2.31.2
Percentile statistics : 20191225.v01 (using entries in the PDB archive December 25th 2019)
Refmac : 5.8.0158
CCP4 : 7.0.044 (Gargrove)
Ideal geometry (proteins) : Engh & Huber (2001)
Ideal geometry (DNA, RNA) : Parkinson et al. (1996)
Validation Pipeline (wwPDB-VP) : 2.31.2

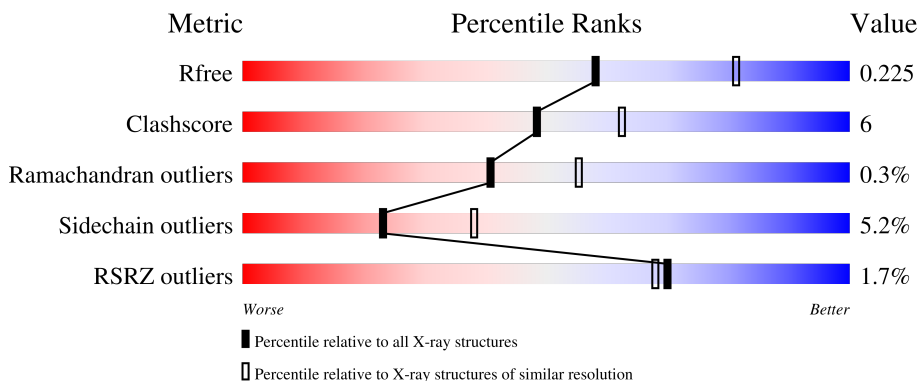
1 Overall quality at a glance i

The following experimental techniques were used to determine the structure:

X-RAY DIFFRACTION

The reported resolution of this entry is 2.40 Å.

Percentile scores (ranging between 0-100) for global validation metrics of the entry are shown in the following graphic. The table shows the number of entries on which the scores are based.



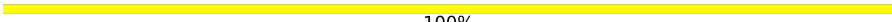

Metric	Whole archive (#Entries)	Similar resolution (#Entries, resolution range(Å))
R_{free}	130704	3907 (2.40-2.40)
Clashscore	141614	4398 (2.40-2.40)
Ramachandran outliers	138981	4318 (2.40-2.40)
Sidechain outliers	138945	4319 (2.40-2.40)
RSRZ outliers	127900	3811 (2.40-2.40)

The table below summarises the geometric issues observed across the polymeric chains and their fit to the electron density. The red, orange, yellow and green segments of the lower bar indicate the fraction of residues that contain outliers for ≥ 3 , 2, 1 and 0 types of geometric quality criteria respectively. A grey segment represents the fraction of residues that are not modelled. The numeric value for each fraction is indicated below the corresponding segment, with a dot representing fractions $\leq 5\%$. The upper red bar (where present) indicates the fraction of residues that have poor fit to the electron density. The numeric value is given above the bar.

Mol	Chain	Length	Quality of chain
1	A	888	<div style="display: flex; align-items: center;"> <div style="width: 2%; height: 10px; background-color: red; margin-right: 5px;"></div> <div style="width: 82%; height: 10px; background-color: green; margin-right: 5px;"></div> <div style="width: 16%; height: 10px; background-color: yellow; margin-right: 5px;"></div> <div style="width: 2%; height: 10px; background-color: grey; margin-right: 5px;"></div> </div> <p style="margin-left: 20px;">2% 82% 16% ..</p>
2	B	3	<div style="display: flex; align-items: center;"> <div style="width: 33%; height: 10px; background-color: yellow; margin-right: 5px;"></div> <div style="width: 67%; height: 10px; background-color: orange; margin-right: 5px;"></div> </div> <p style="margin-left: 20px;">33% 67%</p>
2	D	3	<div style="display: flex; align-items: center;"> <div style="width: 67%; height: 10px; background-color: yellow; margin-right: 5px;"></div> <div style="width: 33%; height: 10px; background-color: orange; margin-right: 5px;"></div> </div> <p style="margin-left: 20px;">67% 33%</p>
2	E	3	<div style="display: flex; align-items: center;"> <div style="width: 33%; height: 10px; background-color: green; margin-right: 5px;"></div> <div style="width: 67%; height: 10px; background-color: yellow; margin-right: 5px;"></div> </div> <p style="margin-left: 20px;">33% 67%</p>
3	C	2	<div style="display: flex; align-items: center;"> <div style="width: 100%; height: 10px; background-color: yellow; margin-right: 5px;"></div> </div> <p style="margin-left: 20px;">100%</p>

Continued on next page...

Continued from previous page...

Mol	Chain	Length	Quality of chain
3	F	2	 100%
3	G	2	 100%

2 Entry composition [i](#)

There are 7 unique types of molecules in this entry. The entry contains 7854 atoms, of which 0 are hydrogens and 0 are deuteriums.

In the tables below, the ZeroOcc column contains the number of atoms modelled with zero occupancy, the AltConf column contains the number of residues with at least one atom in alternate conformation and the Trace column contains the number of residues modelled with at most 2 atoms.

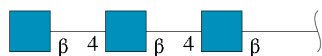
- Molecule 1 is a protein called Glutamyl aminopeptidase.

Mol	Chain	Residues	Atoms					ZeroOcc	AltConf	Trace
			Total	C	N	O	S			
1	A	875	7153	4581	1190	1357	25	0	1	0

There are 8 discrepancies between the modelled and reference sequences:

Chain	Residue	Modelled	Actual	Comment	Reference
A	213	ARG	GLN	variant	UNP Q07075
A	218	ALA	VAL	variant	UNP Q07075
A	958	HIS	-	expression tag	UNP Q07075
A	959	HIS	-	expression tag	UNP Q07075
A	960	HIS	-	expression tag	UNP Q07075
A	961	HIS	-	expression tag	UNP Q07075
A	962	HIS	-	expression tag	UNP Q07075
A	963	HIS	-	expression tag	UNP Q07075

- Molecule 2 is an oligosaccharide called 2-acetamido-2-deoxy-beta-D-glucopyranose-(1-4)-2-acetamido-2-deoxy-beta-D-glucopyranose-(1-4)-2-acetamido-2-deoxy-beta-D-glucopyranose.



Mol	Chain	Residues	Atoms				ZeroOcc	AltConf	Trace
			Total	C	N	O			
2	B	3	42	24	3	15	0	0	0
2	D	3	42	24	3	15	0	0	0
2	E	3	42	24	3	15	0	0	0

- Molecule 3 is an oligosaccharide called 2-acetamido-2-deoxy-beta-D-glucopyranose-(1-4)-2-acetamido-2-deoxy-beta-D-glucopyranose.

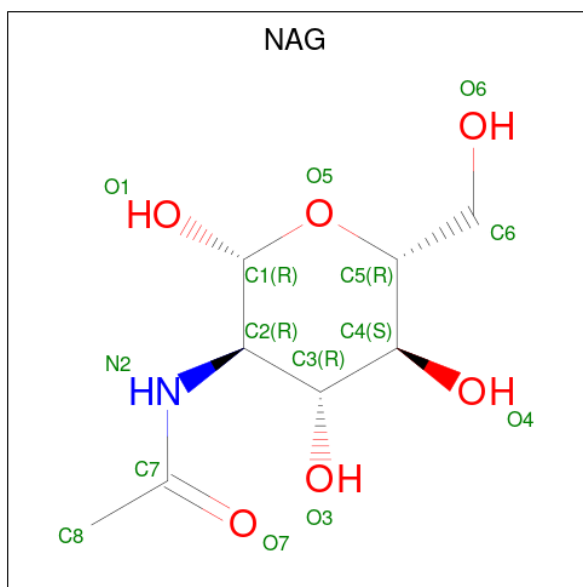


Mol	Chain	Residues	Atoms				ZeroOcc	AltConf	Trace
3	C	2	Total	C	N	O	0	0	0
			28	16	2	10			
3	F	2	Total	C	N	O	0	0	0
			28	16	2	10			
3	G	2	Total	C	N	O	0	0	0
			28	16	2	10			

- Molecule 4 is ZINC ION (three-letter code: ZN) (formula: Zn).

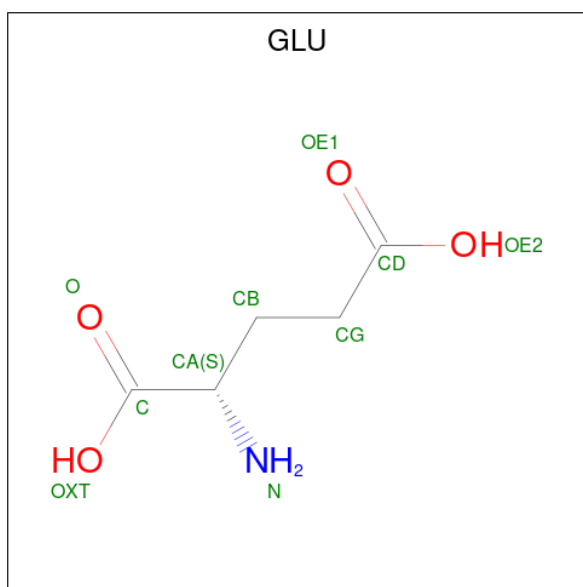
Mol	Chain	Residues	Atoms		ZeroOcc	AltConf
4	A	1	Total	Zn	0	0
			1	1		

- Molecule 5 is 2-acetamido-2-deoxy-beta-D-glucopyranose (three-letter code: NAG) (formula: C₈H₁₅NO₆).



Mol	Chain	Residues	Atoms				ZeroOcc	AltConf
5	A	1	Total	C	N	O	0	0
			14	8	1	5		
5	A	1	Total	C	N	O	0	0
			14	8	1	5		

- Molecule 6 is GLUTAMIC ACID (three-letter code: GLU) (formula: C₅H₉NO₄).



Mol	Chain	Residues	Atoms				ZeroOcc	AltConf
			Total	C	N	O		
6	A	1	10	5	1	4	0	0

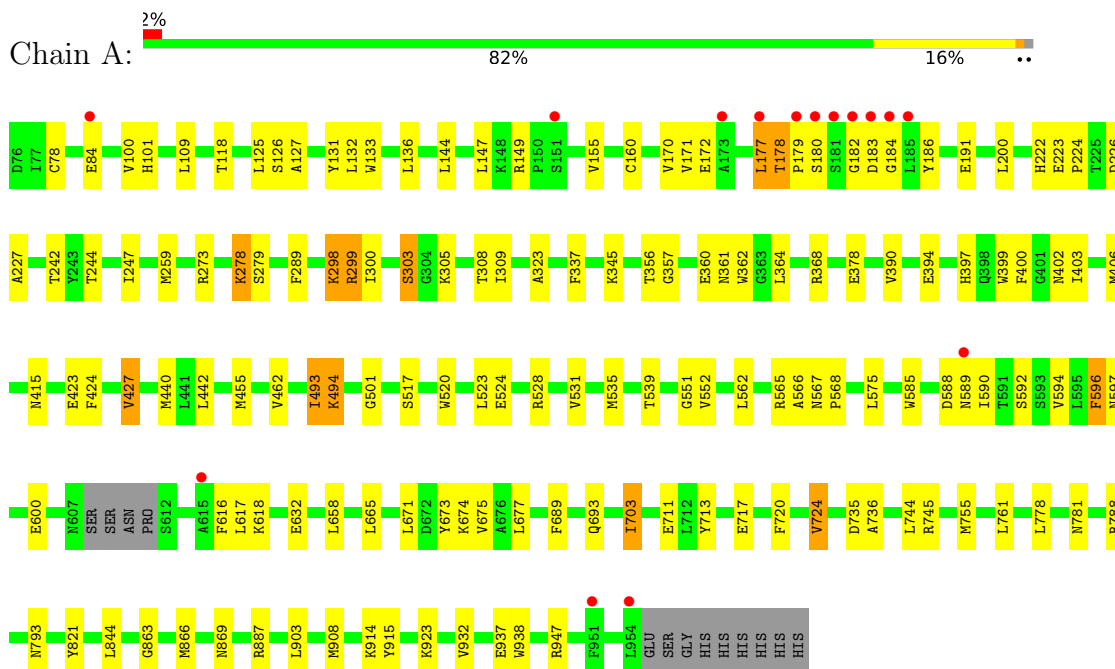
- Molecule 7 is water.

Mol	Chain	Residues	Atoms		ZeroOcc	AltConf
			Total	O		
7	A	452	452	452	0	0

3 Residue-property plots [i](#)

These plots are drawn for all protein, RNA, DNA and oligosaccharide chains in the entry. The first graphic for a chain summarises the proportions of the various outlier classes displayed in the second graphic. The second graphic shows the sequence view annotated by issues in geometry and electron density. Residues are color-coded according to the number of geometric quality criteria for which they contain at least one outlier: green = 0, yellow = 1, orange = 2 and red = 3 or more. A red dot above a residue indicates a poor fit to the electron density ($RSRZ > 2$). Stretches of 2 or more consecutive residues without any outlier are shown as a green connector. Residues present in the sample, but not in the model, are shown in grey.

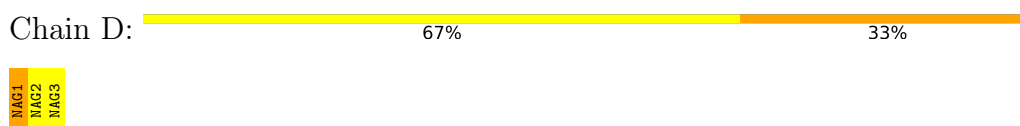
- Molecule 1: Glutamyl aminopeptidase



- Molecule 2: 2-acetamido-2-deoxy-beta-D-glucopyranose-(1-4)-2-acetamido-2-deoxy-beta-D-glucopyranose-(1-4)-2-acetamido-2-deoxy-beta-D-glucopyranose



- Molecule 2: 2-acetamido-2-deoxy-beta-D-glucopyranose-(1-4)-2-acetamido-2-deoxy-beta-D-glucopyranose-(1-4)-2-acetamido-2-deoxy-beta-D-glucopyranose

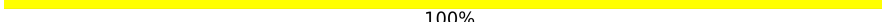


- Molecule 2: 2-acetamido-2-deoxy-beta-D-glucopyranose-(1-4)-2-acetamido-2-deoxy-beta-D-glucopyranose-(1-4)-2-acetamido-2-deoxy-beta-D-glucopyranose

Chain E:  33% 67%

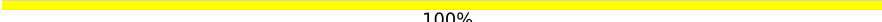
MAG1
MAG2
MAG3

- Molecule 3: 2-acetamido-2-deoxy-beta-D-glucopyranose-(1-4)-2-acetamido-2-deoxy-beta-D-glucopyranose

Chain C:  100%

MAG1
MAG2

- Molecule 3: 2-acetamido-2-deoxy-beta-D-glucopyranose-(1-4)-2-acetamido-2-deoxy-beta-D-glucopyranose

Chain F:  100%

MAG1
MAG2

- Molecule 3: 2-acetamido-2-deoxy-beta-D-glucopyranose-(1-4)-2-acetamido-2-deoxy-beta-D-glucopyranose

Chain G:  100%

MAG1
MAG2

4 Data and refinement statistics

Property	Value	Source
Space group	P 64 2 2	Depositor
Cell constants a, b, c, α , β , γ	142.16Å 142.16Å 237.07Å 90.00° 90.00° 120.00°	Depositor
Resolution (Å)	38.81 – 2.40 38.78 – 2.40	Depositor EDS
% Data completeness (in resolution range)	88.1 (38.81-2.40) 88.1 (38.78-2.40)	Depositor EDS
R_{merge}	(Not available)	Depositor
R_{sym}	(Not available)	Depositor
$\langle I/\sigma(I) \rangle$ ¹	2.71 (at 2.39Å)	Xtrriage
Refinement program	REFMAC 5.7.0029	Depositor
R, R_{free}	0.167 , 0.226 0.171 , 0.225	Depositor DCC
R_{free} test set	2520 reflections (5.11%)	wwPDB-VP
Wilson B-factor (Å ²)	42.5	Xtrriage
Anisotropy	0.029	Xtrriage
Bulk solvent k_{sol} (e/Å ³), B_{sol} (Å ²)	0.33 , 51.1	EDS
L-test for twinning ²	$\langle L \rangle = 0.51$, $\langle L^2 \rangle = 0.35$	Xtrriage
Estimated twinning fraction	No twinning to report.	Xtrriage
F_o, F_c correlation	0.96	EDS
Total number of atoms	7854	wwPDB-VP
Average B, all atoms (Å ²)	61.0	wwPDB-VP

Xtrriage's analysis on translational NCS is as follows: *The largest off-origin peak in the Patterson function is 3.32% of the height of the origin peak. No significant pseudotranslation is detected.*

¹Intensities estimated from amplitudes.

²Theoretical values of $\langle |L| \rangle$, $\langle L^2 \rangle$ for acentric reflections are 0.5, 0.333 respectively for untwinned datasets, and 0.375, 0.2 for perfectly twinned datasets.

5 Model quality [i](#)

5.1 Standard geometry [i](#)

Bond lengths and bond angles in the following residue types are not validated in this section: NAG, ZN

The Z score for a bond length (or angle) is the number of standard deviations the observed value is removed from the expected value. A bond length (or angle) with $|Z| > 5$ is considered an outlier worth inspection. RMSZ is the root-mean-square of all Z scores of the bond lengths (or angles).

Mol	Chain	Bond lengths		Bond angles	
		RMSZ	# $ Z > 5$	RMSZ	# $ Z > 5$
1	A	0.41	2/7338 (0.0%)	0.59	2/9976 (0.0%)

All (2) bond length outliers are listed below:

Mol	Chain	Res	Type	Atoms	Z	Observed(Å)	Ideal(Å)
1	A	149	ARG	CZ-NH1	7.50	1.42	1.33
1	A	149	ARG	NE-CZ	-5.16	1.26	1.33

All (2) bond angle outliers are listed below:

Mol	Chain	Res	Type	Atoms	Z	Observed($^{\circ}$)	Ideal($^{\circ}$)
1	A	149	ARG	NE-CZ-NH2	-12.64	113.98	120.30
1	A	149	ARG	NE-CZ-NH1	6.54	123.57	120.30

There are no chirality outliers.

There are no planarity outliers.

5.2 Too-close contacts [i](#)

In the following table, the Non-H and H(model) columns list the number of non-hydrogen atoms and hydrogen atoms in the chain respectively. The H(added) column lists the number of hydrogen atoms added and optimized by MolProbity. The Clashes column lists the number of clashes within the asymmetric unit, whereas Symm-Clashes lists symmetry-related clashes.

Mol	Chain	Non-H	H(model)	H(added)	Clashes	Symm-Clashes
1	A	7153	0	6943	85	0
2	B	42	0	37	2	0
2	D	42	0	37	1	0
2	E	42	0	37	0	0

Continued on next page...

Continued from previous page...

Mol	Chain	Non-H	H(model)	H(added)	Clashes	Symm-Clashes
3	C	28	0	25	0	0
3	F	28	0	25	0	0
3	G	28	0	25	0	0
4	A	1	0	0	0	0
5	A	28	0	26	0	0
6	A	10	0	5	1	0
7	A	452	0	0	5	0
All	All	7854	0	7160	87	0

The all-atom clashscore is defined as the number of clashes found per 1000 atoms (including hydrogen atoms). The all-atom clashscore for this structure is 6.

All (87) close contacts within the same asymmetric unit are listed below, sorted by their clash magnitude.

Atom-1	Atom-2	Interatomic distance (Å)	Clash overlap (Å)
1:A:178:THR:HB	1:A:179:PRO:HD2	1.34	1.09
1:A:178:THR:CB	1:A:179:PRO:HD2	2.07	0.83
1:A:423:GLU:O	1:A:427:VAL:HG12	1.81	0.80
1:A:761:LEU:HD22	1:A:793:ASN:HD21	1.47	0.80
1:A:101:HIS:CD2	1:A:242:THR:HG23	2.17	0.79
1:A:378:GLU:HG3	7:A:1505:HOH:O	1.82	0.79
1:A:178:THR:HB	1:A:179:PRO:CD	2.15	0.76
1:A:501:GLY:HA3	1:A:523:LEU:HD23	1.67	0.75
1:A:736:ALA:O	1:A:745:ARG:NH1	2.19	0.75
2:B:2:NAG:H3	2:B:3:NAG:H2	1.70	0.74
1:A:101:HIS:HD2	1:A:242:THR:HG23	1.53	0.72
1:A:177:LEU:HB3	1:A:186:TYR:OH	1.90	0.71
1:A:118:THR:HG22	1:A:191:GLU:HG2	1.69	0.71
1:A:244:THR:HG22	1:A:278:LYS:HA	1.71	0.71
1:A:177:LEU:HD13	1:A:178:THR:H	1.57	0.69
1:A:180:SER:HB2	1:A:184:GLY:O	1.92	0.68
1:A:147:LEU:HB3	1:A:155:VAL:HB	1.76	0.65
1:A:178:THR:CB	1:A:179:PRO:CD	2.73	0.64
1:A:717:GLU:HG2	1:A:755:MET:O	1.98	0.64
1:A:735:ASP:OD1	1:A:781:ASN:HB2	1.99	0.62
1:A:585:TRP:CZ3	1:A:594:VAL:HG23	2.37	0.59
1:A:565:ARG:CZ	1:A:937:GLU:HG3	2.32	0.59
1:A:131:TYR:CE2	1:A:172:GLU:HB3	2.37	0.59
1:A:674:LYS:HD3	2:D:1:NAG:H62	1.86	0.56
1:A:298:LYS:HA	1:A:308:THR:HG22	1.87	0.56
1:A:585:TRP:HZ3	1:A:594:VAL:HG23	1.70	0.55

Continued on next page...

Continued from previous page...

Atom-1	Atom-2	Interatomic distance (Å)	Clash overlap (Å)
1:A:493:ILE:O	1:A:494:LYS:HB2	2.08	0.54
1:A:337:PHE:CE1	1:A:400:PHE:HE2	2.26	0.54
1:A:711:GLU:HG2	1:A:947:ARG:NH2	2.23	0.54
1:A:597:ASN:HB3	1:A:600:GLU:HG2	1.89	0.54
1:A:247:ILE:HD11	1:A:289:PHE:HB2	1.90	0.53
1:A:125:LEU:HD21	1:A:127:ALA:O	2.08	0.53
1:A:273:ARG:HD2	7:A:1550:HOH:O	2.07	0.53
1:A:616:PHE:HE2	1:A:618:LYS:HG3	1.73	0.52
1:A:126:SER:HA	1:A:179:PRO:HB3	1.93	0.51
1:A:303:SER:HB2	1:A:305:LYS:HE3	1.93	0.51
1:A:160:CYS:HB2	1:A:171:VAL:HG12	1.93	0.50
1:A:390:VAL:O	1:A:394:GLU:HG2	2.12	0.50
1:A:133:TRP:HB3	1:A:170:VAL:HG22	1.93	0.49
1:A:689:PHE:HA	1:A:744:LEU:HD13	1.96	0.48
1:A:180:SER:CB	1:A:184:GLY:O	2.61	0.47
1:A:160:CYS:CB	1:A:171:VAL:HG12	2.45	0.46
1:A:131:TYR:CD2	1:A:172:GLU:HB3	2.51	0.46
1:A:863:GLY:HA2	1:A:866:MET:HB2	1.97	0.46
1:A:177:LEU:HD13	1:A:178:THR:N	2.28	0.46
1:A:244:THR:HG22	1:A:278:LYS:CA	2.45	0.46
1:A:147:LEU:HD23	1:A:155:VAL:HG11	1.97	0.46
2:B:2:NAG:H3	2:B:3:NAG:C2	2.43	0.46
1:A:402:ASN:N	1:A:402:ASN:HD22	2.13	0.45
1:A:182:GLY:C	1:A:184:GLY:H	2.20	0.45
1:A:303:SER:CB	1:A:305:LYS:HE3	2.47	0.45
1:A:259:MET:SD	1:A:279:SER:HA	2.56	0.45
1:A:908:MET:SD	1:A:932:VAL:HG21	2.57	0.45
1:A:671:LEU:HD11	1:A:675:VAL:HG11	2.00	0.44
1:A:493:ILE:HD11	1:A:531:VAL:HG22	2.00	0.44
1:A:309:ILE:CD1	1:A:323:ALA:HA	2.48	0.44
1:A:100:VAL:O	1:A:242:THR:HG22	2.18	0.43
1:A:788:ARG:HD2	7:A:1144:HOH:O	2.19	0.43
1:A:923:LYS:HG3	7:A:1428:HOH:O	2.19	0.43
1:A:520:TRP:CH2	1:A:535:MET:HB3	2.54	0.43
1:A:703:ILE:HD12	1:A:713:TYR:CE2	2.54	0.43
1:A:567:ASN:HA	1:A:568:PRO:HD3	1.88	0.43
1:A:182:GLY:O	1:A:184:GLY:N	2.49	0.43
1:A:222:HIS:CD2	1:A:227:ALA:HA	2.54	0.42
1:A:914:LYS:HD3	1:A:915:TYR:CE2	2.54	0.42
1:A:455:MET:HE3	1:A:566:ALA:HB1	2.02	0.42
1:A:299:ARG:HD2	1:A:323:ALA:HB1	2.01	0.42

Continued on next page...

Continued from previous page...

Atom-1	Atom-2	Interatomic distance (Å)	Clash overlap (Å)
1:A:356:THR:HB	1:A:357:GLY:H	1.71	0.42
1:A:493:ILE:HD11	1:A:531:VAL:CG2	2.50	0.42
1:A:424:PHE:CG	1:A:440:MET:HG2	2.55	0.42
1:A:588:ASP:O	1:A:589:ASN:HB2	2.20	0.42
1:A:596:PHE:C	1:A:596:PHE:CD1	2.94	0.41
1:A:887:ARG:NH2	6:A:1019:GLU:OE1	2.51	0.41
1:A:399:TRP:HA	1:A:403:ILE:HD12	2.02	0.41
1:A:736:ALA:H	1:A:745:ARG:NH1	2.18	0.41
1:A:101:HIS:HD2	1:A:242:THR:CG2	2.30	0.41
1:A:360:GLU:HG3	1:A:397:HIS:HB3	2.03	0.41
1:A:361:ASN:HB2	1:A:364:LEU:O	2.21	0.41
1:A:442:LEU:HD13	1:A:693:GLN:HG3	2.03	0.41
1:A:551:GLY:H	1:A:632:GLU:CD	2.24	0.41
1:A:720:PHE:O	1:A:724:VAL:HG22	2.21	0.41
1:A:937:GLU:HG2	7:A:1496:HOH:O	2.21	0.41
1:A:178:THR:HG22	1:A:179:PRO:HD3	2.03	0.41
1:A:223:GLU:HA	1:A:224:PRO:HA	1.80	0.41
1:A:562:LEU:HD12	1:A:562:LEU:HA	1.97	0.41
1:A:673:TYR:HH	1:A:938:TRP:HE1	1.68	0.40
1:A:222:HIS:HA	1:A:226:ASP:HB2	2.03	0.40

There are no symmetry-related clashes.

5.3 Torsion angles [i](#)

5.3.1 Protein backbone [i](#)

In the following table, the Percentiles column shows the percent Ramachandran outliers of the chain as a percentile score with respect to all X-ray entries followed by that with respect to entries of similar resolution.

The Analysed column shows the number of residues for which the backbone conformation was analysed, and the total number of residues.

Mol	Chain	Analysed	Favoured	Allowed	Outliers	Percentiles
1	A	872/888 (98%)	834 (96%)	35 (4%)	3 (0%)	41 55

All (3) Ramachandran outliers are listed below:

Mol	Chain	Res	Type
1	A	183	ASP

Continued on next page...

Continued from previous page...

Mol	Chain	Res	Type
1	A	552	VAL
1	A	494	LYS

5.3.2 Protein sidechains [i](#)

In the following table, the Percentiles column shows the percent sidechain outliers of the chain as a percentile score with respect to all X-ray entries followed by that with respect to entries of similar resolution.

The Analysed column shows the number of residues for which the sidechain conformation was analysed, and the total number of residues.

Mol	Chain	Analysed	Rotameric	Outliers	Percentiles
1	A	786/797 (99%)	745 (95%)	41 (5%)	23 38

All (41) residues with a non-rotameric sidechain are listed below:

Mol	Chain	Res	Type
1	A	78	CYS
1	A	84	GLU
1	A	109	LEU
1	A	132	LEU
1	A	136	LEU
1	A	144	LEU
1	A	177	LEU
1	A	178	THR
1	A	200	LEU
1	A	278	LYS
1	A	298	LYS
1	A	299	ARG
1	A	300	ILE
1	A	303	SER
1	A	345	LYS
1	A	362	TRP
1	A	368	ARG
1	A	406	MET
1	A	415	ASN
1	A	427	VAL
1	A	462	VAL
1	A	493	ILE
1	A	517	SER
1	A	524	GLU

Continued on next page...

Continued from previous page...

Mol	Chain	Res	Type
1	A	528	ARG
1	A	539	THR
1	A	575	LEU
1	A	590	ILE
1	A	592	SER
1	A	596	PHE
1	A	617	LEU
1	A	658	LEU
1	A	665	LEU
1	A	677	LEU
1	A	703	ILE
1	A	724	VAL
1	A	778	LEU
1	A	821	TYR
1	A	844	LEU
1	A	869	ASN
1	A	903	LEU

Sometimes sidechains can be flipped to improve hydrogen bonding and reduce clashes. All (8) such sidechains are listed below:

Mol	Chain	Res	Type
1	A	105	HIS
1	A	317	HIS
1	A	402	ASN
1	A	415	ASN
1	A	570	GLN
1	A	792	GLN
1	A	793	ASN
1	A	874	ASN

5.3.3 RNA [i](#)

There are no RNA molecules in this entry.

5.4 Non-standard residues in protein, DNA, RNA chains [i](#)

There are no non-standard protein/DNA/RNA residues in this entry.

5.5 Carbohydrates i

15 monosaccharides are modelled in this entry.

In the following table, the Counts columns list the number of bonds (or angles) for which Mogul statistics could be retrieved, the number of bonds (or angles) that are observed in the model and the number of bonds (or angles) that are defined in the Chemical Component Dictionary. The Link column lists molecule types, if any, to which the group is linked. The Z score for a bond length (or angle) is the number of standard deviations the observed value is removed from the expected value. A bond length (or angle) with $|Z| > 2$ is considered an outlier worth inspection. RMSZ is the root-mean-square of all Z scores of the bond lengths (or angles).

Mol	Type	Chain	Res	Link	Bond lengths			Bond angles		
					Counts	RMSZ	# Z > 2	Counts	RMSZ	# Z > 2
2	NAG	B	1	2,1	14,14,15	0.45	0	17,19,21	1.90	2 (11%)
2	NAG	B	2	2	14,14,15	0.71	0	17,19,21	2.76	7 (41%)
2	NAG	B	3	2	14,14,15	0.69	0	17,19,21	1.65	5 (29%)
3	NAG	C	1	3,1	14,14,15	0.47	0	17,19,21	0.97	1 (5%)
3	NAG	C	2	3	14,14,15	0.46	0	17,19,21	1.13	1 (5%)
2	NAG	D	1	2,1	14,14,15	0.62	0	17,19,21	1.20	2 (11%)
2	NAG	D	2	2	14,14,15	0.57	0	17,19,21	1.08	1 (5%)
2	NAG	D	3	2	14,14,15	0.55	0	17,19,21	2.09	3 (17%)
2	NAG	E	1	2,1	14,14,15	0.53	0	17,19,21	1.28	1 (5%)
2	NAG	E	2	2	14,14,15	0.52	0	17,19,21	1.99	4 (23%)
2	NAG	E	3	2	14,14,15	0.54	0	17,19,21	0.96	0
3	NAG	F	1	3,1	14,14,15	0.58	0	17,19,21	1.92	4 (23%)
3	NAG	F	2	3	14,14,15	0.46	0	17,19,21	1.17	1 (5%)
3	NAG	G	1	3,1	14,14,15	0.57	0	17,19,21	1.00	0
3	NAG	G	2	3	14,14,15	0.54	0	17,19,21	0.68	0

In the following table, the Chirals column lists the number of chiral outliers, the number of chiral centers analysed, the number of these observed in the model and the number defined in the Chemical Component Dictionary. Similar counts are reported in the Torsion and Rings columns. '-' means no outliers of that kind were identified.

Mol	Type	Chain	Res	Link	Chirals	Torsions	Rings
2	NAG	B	1	2,1	-	2/6/23/26	0/1/1/1
2	NAG	B	2	2	-	3/6/23/26	0/1/1/1
2	NAG	B	3	2	-	4/6/23/26	0/1/1/1
3	NAG	C	1	3,1	-	2/6/23/26	0/1/1/1
3	NAG	C	2	3	-	2/6/23/26	0/1/1/1

Continued on next page...

Continued from previous page...

Mol	Type	Chain	Res	Link	Chirals	Torsions	Rings
2	NAG	D	1	2,1	-	2/6/23/26	0/1/1/1
2	NAG	D	2	2	-	2/6/23/26	0/1/1/1
2	NAG	D	3	2	-	2/6/23/26	0/1/1/1
2	NAG	E	1	2,1	-	0/6/23/26	0/1/1/1
2	NAG	E	2	2	-	3/6/23/26	0/1/1/1
2	NAG	E	3	2	-	1/6/23/26	0/1/1/1
3	NAG	F	1	3,1	-	0/6/23/26	0/1/1/1
3	NAG	F	2	3	-	2/6/23/26	0/1/1/1
3	NAG	G	1	3,1	-	2/6/23/26	0/1/1/1
3	NAG	G	2	3	-	2/6/23/26	0/1/1/1

There are no bond length outliers.

All (32) bond angle outliers are listed below:

Mol	Chain	Res	Type	Atoms	Z	Observed(°)	Ideal(°)
2	B	2	NAG	C1-O5-C5	7.11	121.83	112.19
2	D	3	NAG	C1-O5-C5	6.90	121.54	112.19
2	B	1	NAG	C1-O5-C5	6.23	120.64	112.19
2	B	2	NAG	C2-N2-C7	5.13	130.20	122.90
3	F	1	NAG	C1-O5-C5	4.62	118.46	112.19
3	F	1	NAG	O4-C4-C3	4.60	120.99	110.35
2	E	2	NAG	O5-C1-C2	-4.49	104.20	111.29
2	E	2	NAG	C2-N2-C7	4.09	128.73	122.90
2	B	3	NAG	C2-N2-C7	3.81	128.33	122.90
2	E	1	NAG	C1-O5-C5	3.77	117.30	112.19
2	D	2	NAG	C4-C3-C2	3.37	115.96	111.02
2	B	1	NAG	O4-C4-C3	3.31	118.00	110.35
2	B	2	NAG	C4-C3-C2	3.02	115.44	111.02
2	B	2	NAG	O5-C5-C4	2.93	117.97	110.83
3	F	1	NAG	C4-C3-C2	-2.91	106.76	111.02
2	E	2	NAG	C1-C2-N2	2.89	115.43	110.49
3	F	2	NAG	C1-O5-C5	2.89	116.10	112.19
2	D	3	NAG	O5-C5-C6	2.88	111.73	107.20
2	B	3	NAG	C3-C4-C5	2.82	115.27	110.24
2	B	3	NAG	C8-C7-N2	2.68	120.64	116.10
2	B	2	NAG	O4-C4-C3	2.68	116.55	110.35
2	D	3	NAG	C2-N2-C7	2.60	126.61	122.90
2	B	2	NAG	C3-C4-C5	2.49	114.68	110.24
2	B	2	NAG	O5-C1-C2	2.46	115.17	111.29
2	B	3	NAG	C4-C3-C2	2.42	114.56	111.02

Continued on next page...

Continued from previous page...

Mol	Chain	Res	Type	Atoms	Z	Observed(°)	Ideal(°)
3	C	1	NAG	C1-O5-C5	2.35	115.38	112.19
2	E	2	NAG	C1-O5-C5	2.32	115.33	112.19
2	B	3	NAG	O7-C7-C8	-2.26	117.87	122.06
3	F	1	NAG	O4-C4-C5	2.21	114.78	109.30
2	D	1	NAG	C1-C2-N2	-2.08	106.94	110.49
2	D	1	NAG	O7-C7-C8	-2.01	118.32	122.06
3	C	2	NAG	O5-C1-C2	-2.01	108.11	111.29

There are no chirality outliers.

All (29) torsion outliers are listed below:

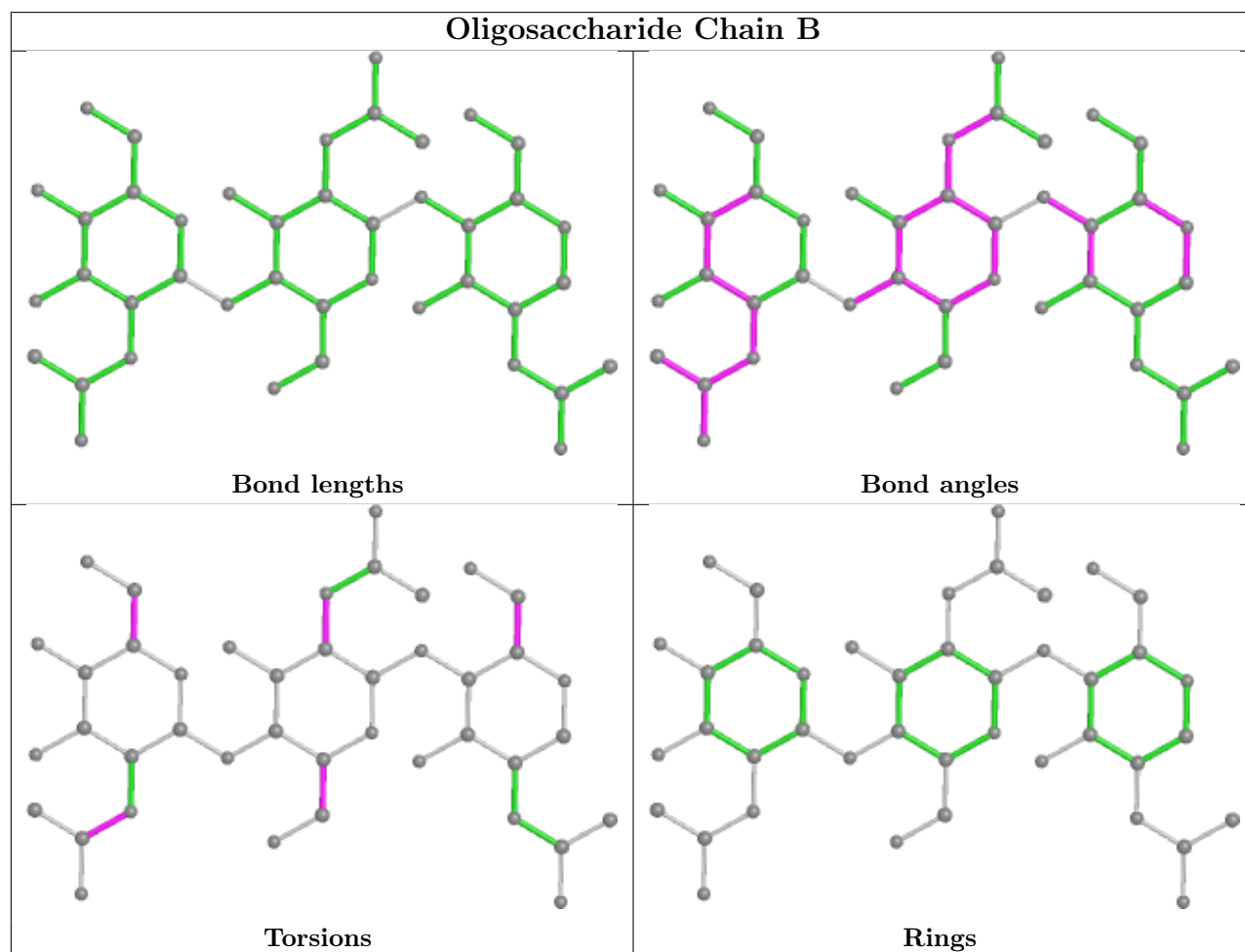
Mol	Chain	Res	Type	Atoms
2	B	2	NAG	O5-C5-C6-O6
2	D	2	NAG	O5-C5-C6-O6
3	C	1	NAG	O5-C5-C6-O6
2	B	2	NAG	C4-C5-C6-O6
2	D	2	NAG	C4-C5-C6-O6
3	C	1	NAG	C4-C5-C6-O6
2	B	3	NAG	O5-C5-C6-O6
2	D	3	NAG	O5-C5-C6-O6
2	E	2	NAG	O5-C5-C6-O6
2	B	3	NAG	C8-C7-N2-C2
2	B	3	NAG	O7-C7-N2-C2
2	D	1	NAG	C8-C7-N2-C2
2	D	1	NAG	O7-C7-N2-C2
3	F	2	NAG	C8-C7-N2-C2
3	F	2	NAG	O7-C7-N2-C2
3	G	1	NAG	C8-C7-N2-C2
3	G	1	NAG	O7-C7-N2-C2
2	B	3	NAG	C4-C5-C6-O6
2	E	2	NAG	C4-C5-C6-O6
3	C	2	NAG	O5-C5-C6-O6
2	D	3	NAG	C4-C5-C6-O6
2	B	1	NAG	O5-C5-C6-O6
3	G	2	NAG	O5-C5-C6-O6
3	G	2	NAG	C4-C5-C6-O6
2	E	3	NAG	O5-C5-C6-O6
2	B	2	NAG	C1-C2-N2-C7
3	C	2	NAG	C4-C5-C6-O6
2	B	1	NAG	C4-C5-C6-O6
2	E	2	NAG	C3-C2-N2-C7

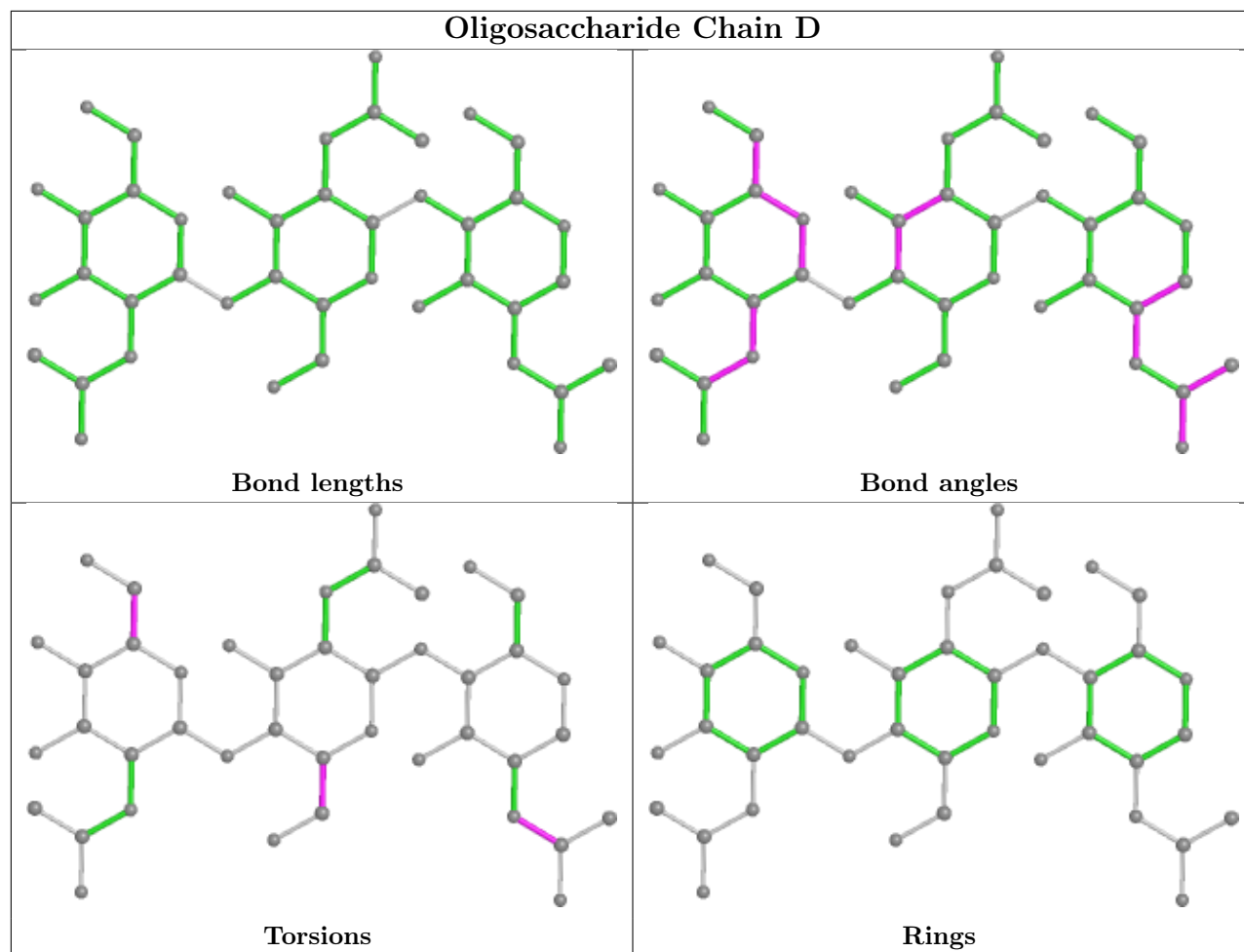
There are no ring outliers.

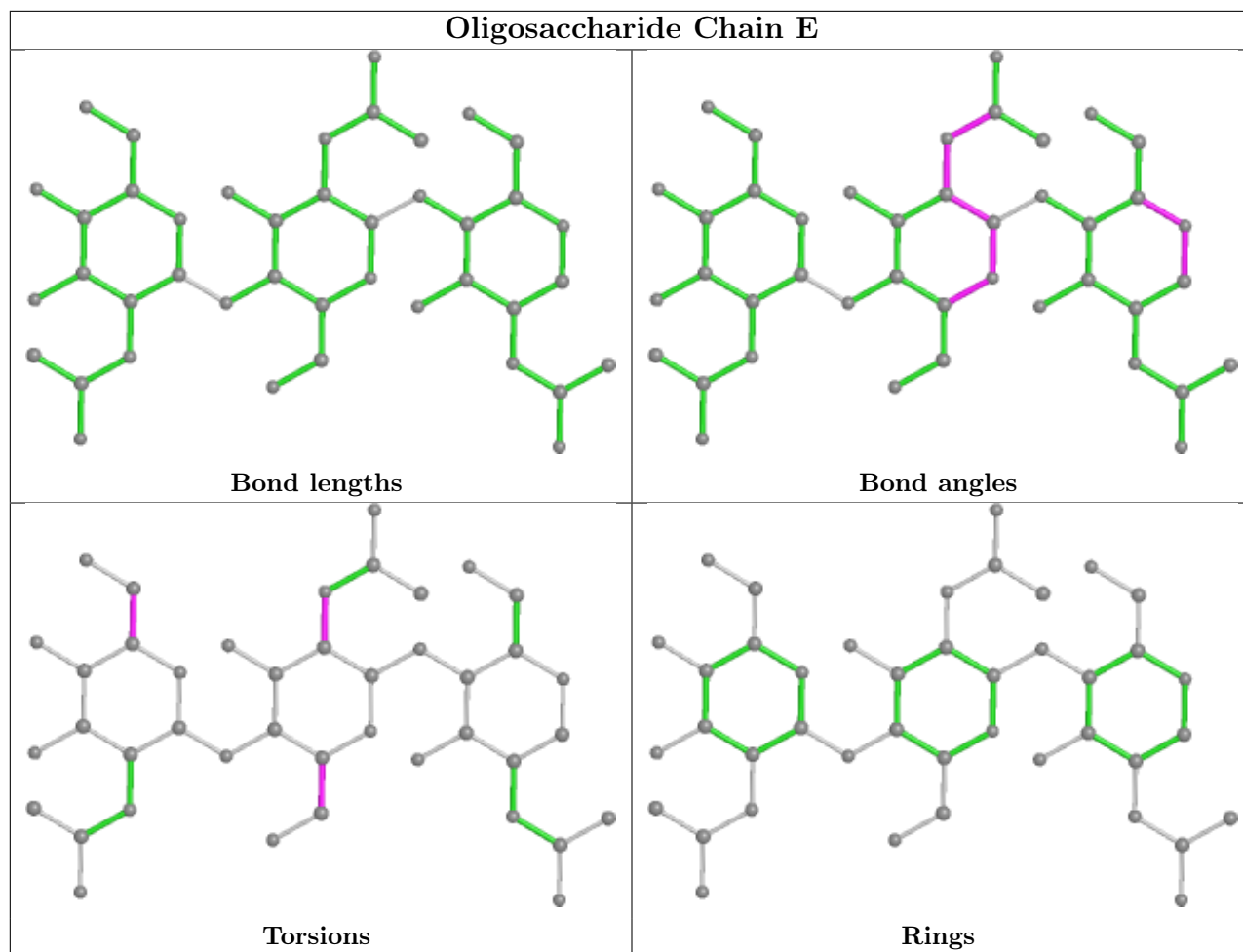
3 monomers are involved in 3 short contacts:

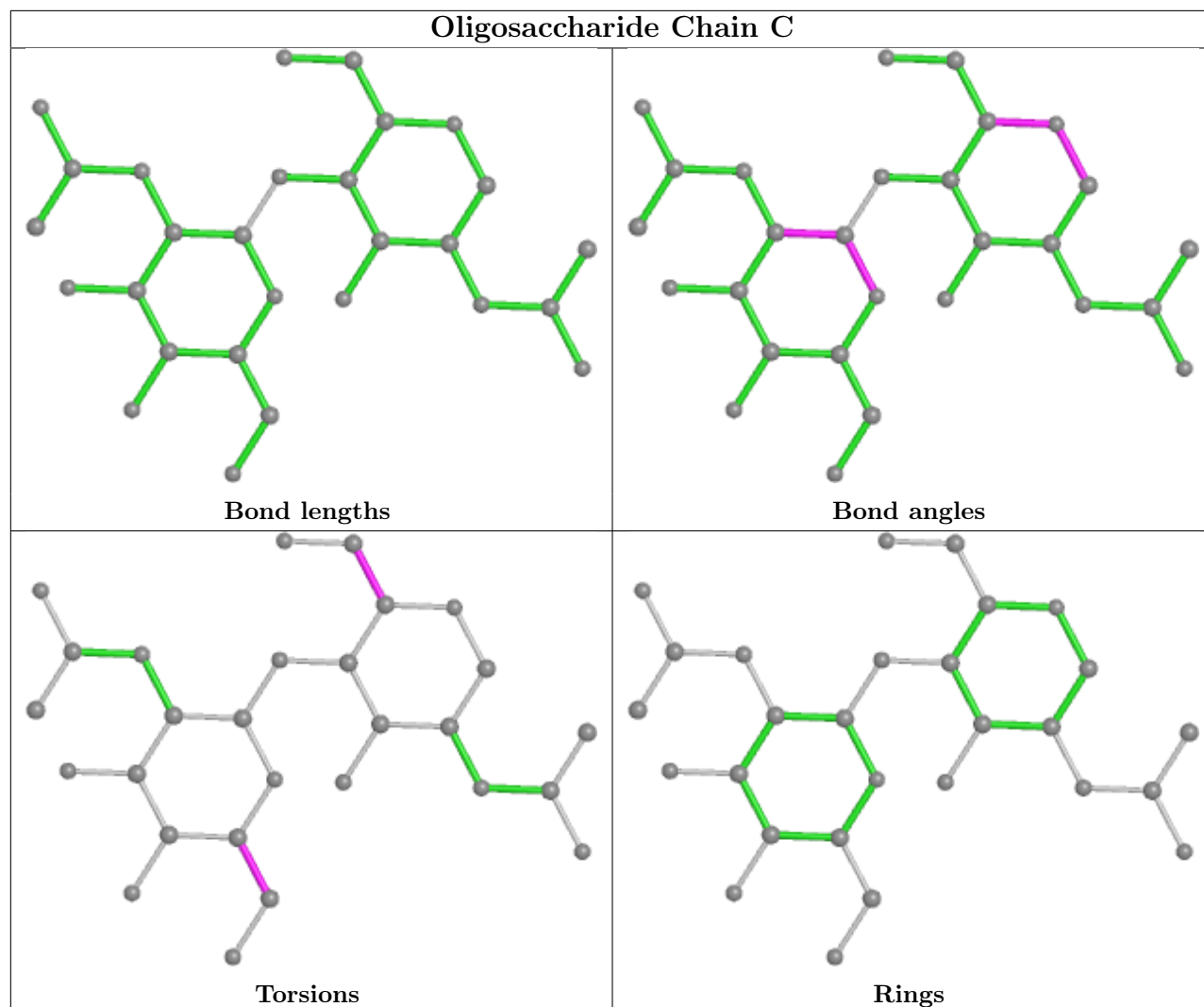
Mol	Chain	Res	Type	Clashes	Symm-Clashes
2	B	2	NAG	2	0
2	B	3	NAG	2	0
2	D	1	NAG	1	0

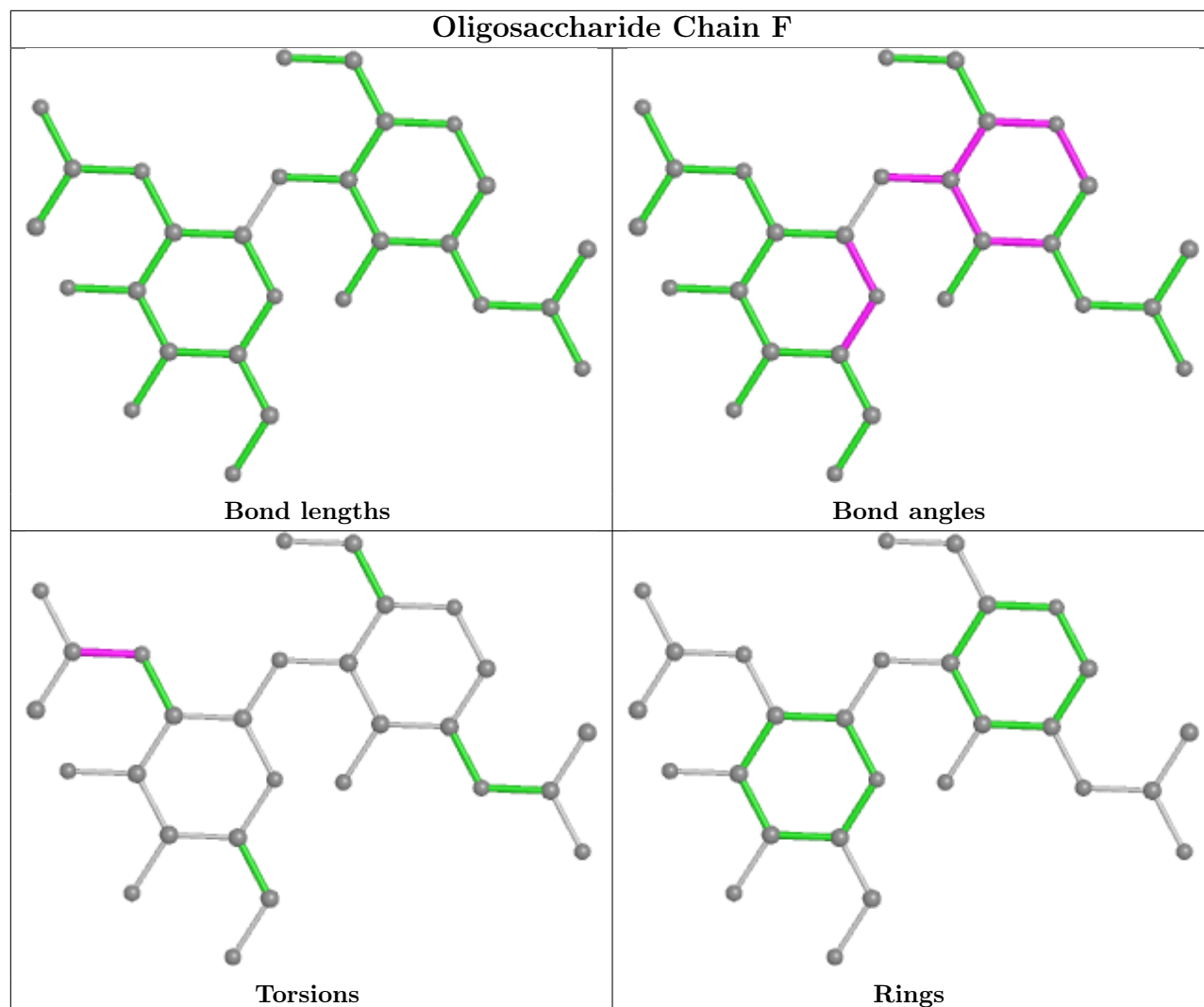
The following is a two-dimensional graphical depiction of Mogul quality analysis of bond lengths, bond angles, torsion angles, and ring geometry for oligosaccharide.

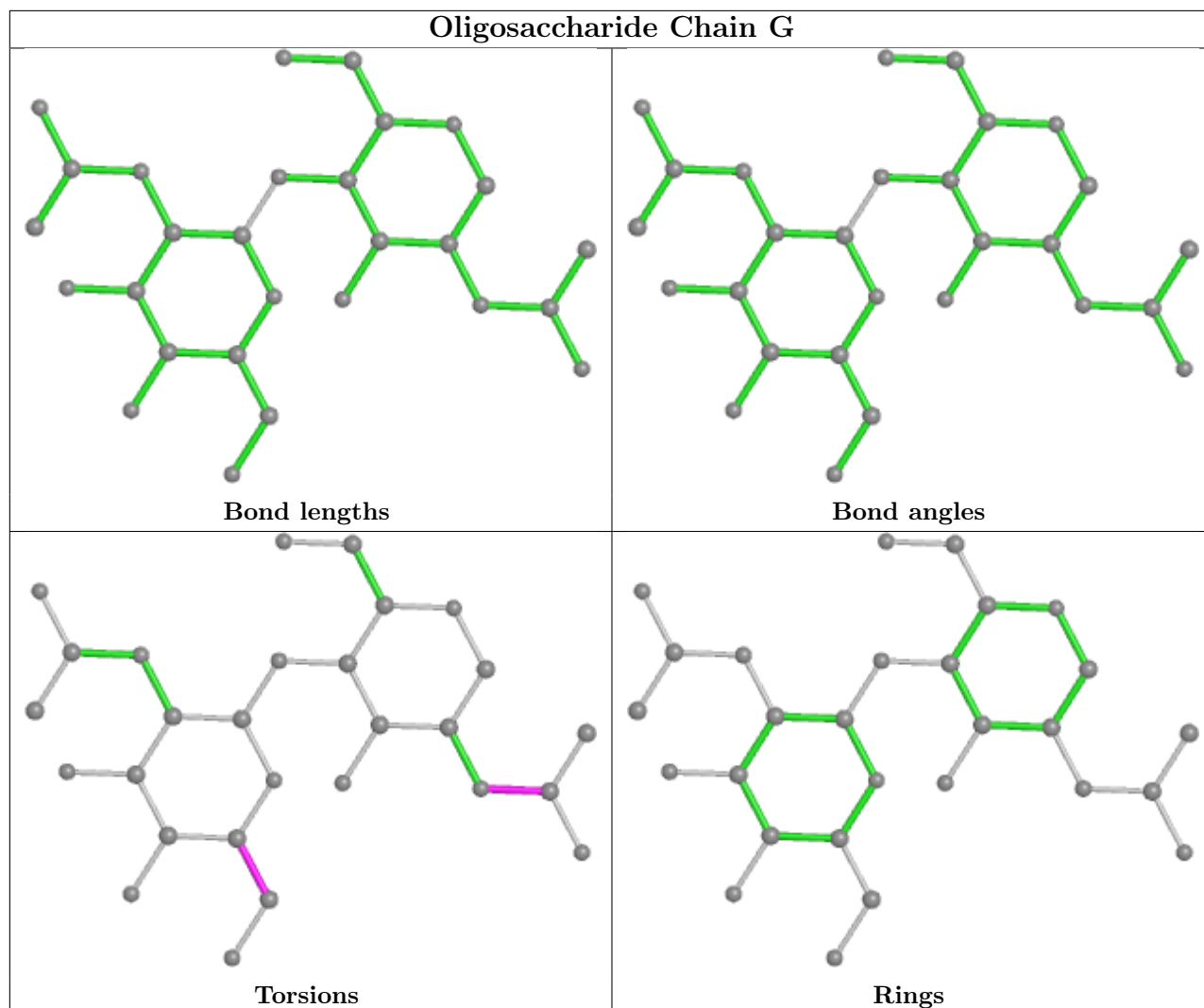












5.6 Ligand geometry [i](#)

Of 4 ligands modelled in this entry, 1 is monoatomic - leaving 3 for Mogul analysis.

In the following table, the Counts columns list the number of bonds (or angles) for which Mogul statistics could be retrieved, the number of bonds (or angles) that are observed in the model and the number of bonds (or angles) that are defined in the Chemical Component Dictionary. The Link column lists molecule types, if any, to which the group is linked. The Z score for a bond length (or angle) is the number of standard deviations the observed value is removed from the expected value. A bond length (or angle) with $|Z| > 2$ is considered an outlier worth inspection. RMSZ is the root-mean-square of all Z scores of the bond lengths (or angles).

Mol	Type	Chain	Res	Link	Bond lengths			Bond angles		
					Counts	RMSZ	# $ Z > 2$	Counts	RMSZ	# $ Z > 2$
6	GLU	A	1019	-	8,9,9	1.05	1 (12%)	10,11,11	1.46	2 (20%)
5	NAG	A	1008	1	14,14,15	0.75	0	17,19,21	1.45	2 (11%)
5	NAG	A	1007	1	14,14,15	0.47	0	17,19,21	0.86	0

In the following table, the Chirals column lists the number of chiral outliers, the number of chiral centers analysed, the number of these observed in the model and the number defined in the Chemical Component Dictionary. Similar counts are reported in the Torsion and Rings columns. '-' means no outliers of that kind were identified.

Mol	Type	Chain	Res	Link	Chirals	Torsions	Rings
6	GLU	A	1019	-	-	2/9/9/9	-
5	NAG	A	1008	1	-	2/6/23/26	0/1/1/1
5	NAG	A	1007	1	-	2/6/23/26	0/1/1/1

All (1) bond length outliers are listed below:

Mol	Chain	Res	Type	Atoms	Z	Observed(Å)	Ideal(Å)
6	A	1019	GLU	OXT-C	-2.16	1.23	1.30

All (4) bond angle outliers are listed below:

Mol	Chain	Res	Type	Atoms	Z	Observed(°)	Ideal(°)
5	A	1008	NAG	C2-N2-C7	3.66	128.12	122.90
6	A	1019	GLU	OXT-C-O	-3.15	116.93	124.09
6	A	1019	GLU	OXT-C-CA	2.57	122.13	113.38
5	A	1008	NAG	O5-C1-C2	-2.22	107.79	111.29

There are no chirality outliers.

All (6) torsion outliers are listed below:

Mol	Chain	Res	Type	Atoms
6	A	1019	GLU	O-C-CA-N
6	A	1019	GLU	OXT-C-CA-N
5	A	1007	NAG	C8-C7-N2-C2
5	A	1007	NAG	O7-C7-N2-C2
5	A	1008	NAG	C1-C2-N2-C7
5	A	1008	NAG	C4-C5-C6-O6

There are no ring outliers.

1 monomer is involved in 1 short contact:

Mol	Chain	Res	Type	Clashes	Symm-Clashes
6	A	1019	GLU	1	0

5.7 Other polymers [i](#)

There are no such residues in this entry.

5.8 Polymer linkage issues [i](#)

There are no chain breaks in this entry.

6 Fit of model and data [i](#)

6.1 Protein, DNA and RNA chains [i](#)

In the following table, the column labelled '#RSRZ> 2' contains the number (and percentage) of RSRZ outliers, followed by percent RSRZ outliers for the chain as percentile scores relative to all X-ray entries and entries of similar resolution. The OWAB column contains the minimum, median, 95th percentile and maximum values of the occupancy-weighted average B-factor per residue. The column labelled 'Q< 0.9' lists the number of (and percentage) of residues with an average occupancy less than 0.9.

Mol	Chain	Analysed	<RSRZ>	#RSRZ>2	OWAB(Å ²)	Q<0.9
1	A	875/888 (98%)	-0.35	15 (1%) 70 68	23, 56, 104, 145	1 (0%)

All (15) RSRZ outliers are listed below:

Mol	Chain	Res	Type	RSRZ
1	A	183	ASP	4.1
1	A	185	LEU	3.6
1	A	182	GLY	3.5
1	A	173	ALA	3.4
1	A	954	LEU	3.1
1	A	184	GLY	3.0
1	A	615	ALA	3.0
1	A	951	PHE	2.7
1	A	589	ASN	2.7
1	A	151	SER	2.7
1	A	84	GLU	2.5
1	A	180	SER	2.4
1	A	177	LEU	2.4
1	A	179	PRO	2.3
1	A	181	SER	2.1

6.2 Non-standard residues in protein, DNA, RNA chains [i](#)

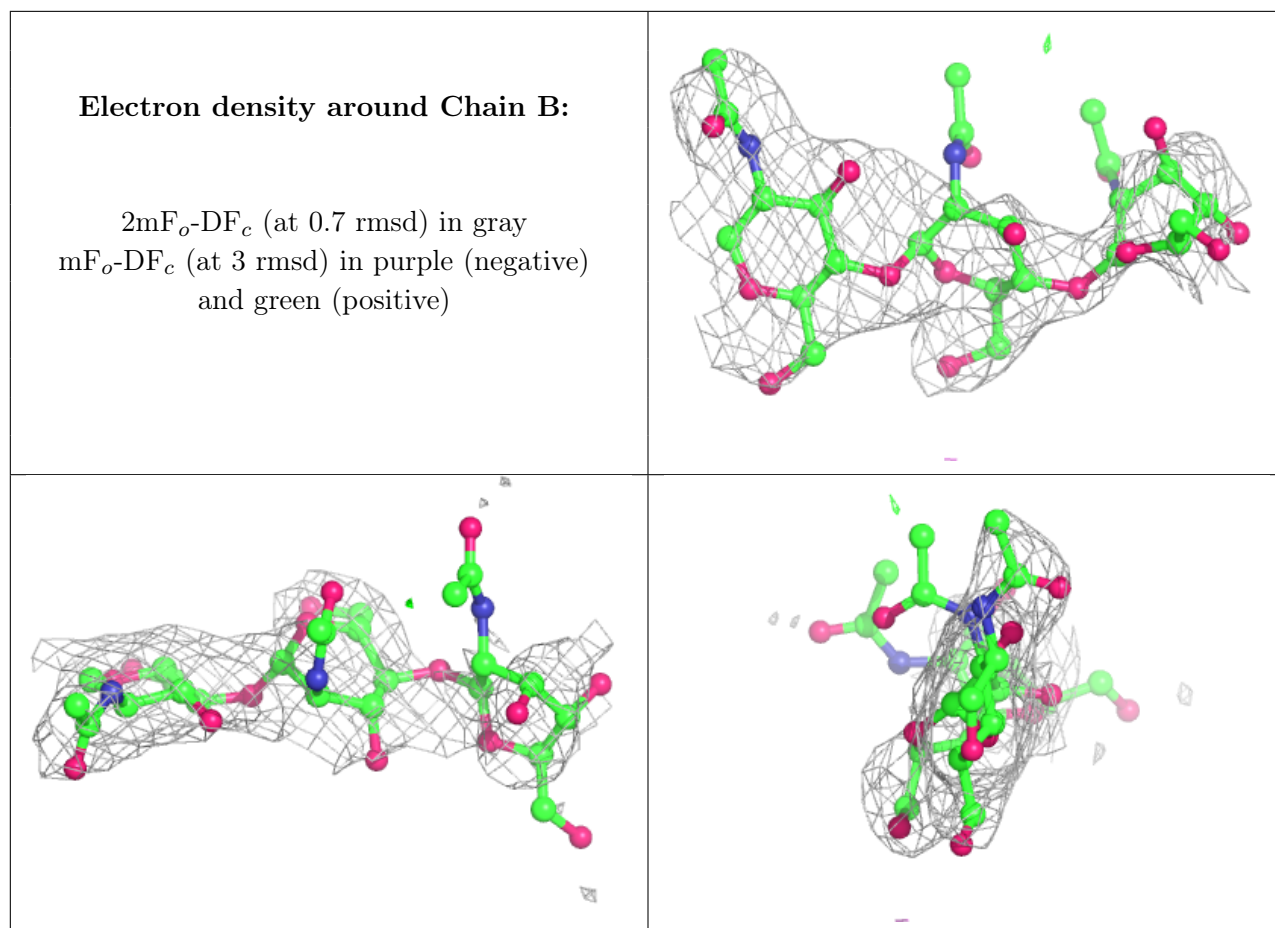
There are no non-standard protein/DNA/RNA residues in this entry.

6.3 Carbohydrates [i](#)

In the following table, the Atoms column lists the number of modelled atoms in the group and the number defined in the chemical component dictionary. The B-factors column lists the minimum, median, 95th percentile and maximum values of B factors of atoms in the group. The column labelled 'Q< 0.9' lists the number of atoms with occupancy less than 0.9.

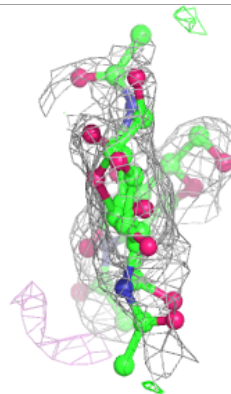
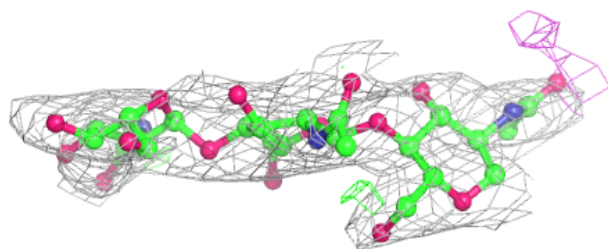
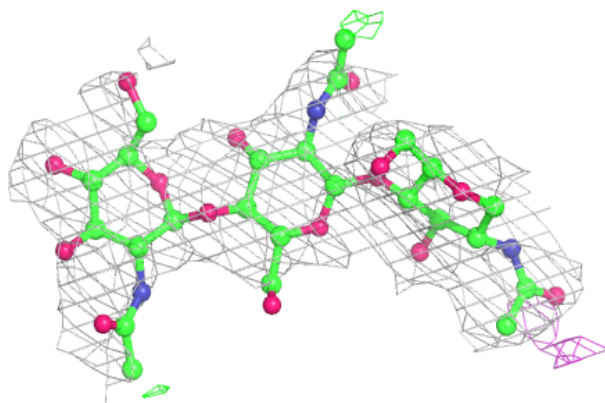
Mol	Type	Chain	Res	Atoms	RSCC	RSR	B-factors(\AA^2)	Q<0.9
2	NAG	B	3	14/15	0.81	0.49	135,155,168,168	0
2	NAG	B	2	14/15	0.82	0.36	84,145,160,176	0
2	NAG	D	3	14/15	0.82	0.29	113,150,162,174	0
2	NAG	E	3	14/15	0.83	0.25	110,145,159,166	0
3	NAG	F	2	14/15	0.88	0.39	107,128,142,149	0
3	NAG	C	2	14/15	0.89	0.41	107,131,155,160	0
2	NAG	D	1	14/15	0.91	0.15	66,100,109,112	0
3	NAG	G	2	14/15	0.91	0.31	105,124,138,138	0
3	NAG	G	1	14/15	0.93	0.12	51,71,85,97	0
2	NAG	D	2	14/15	0.93	0.13	120,132,145,146	0
2	NAG	E	1	14/15	0.94	0.15	58,81,97,164	0
3	NAG	C	1	14/15	0.95	0.18	62,86,105,116	0
2	NAG	E	2	14/15	0.96	0.20	95,101,133,138	0
2	NAG	B	1	14/15	0.96	0.14	66,93,99,106	0
3	NAG	F	1	14/15	0.96	0.24	54,76,88,88	0

The following is a graphical depiction of the model fit to experimental electron density for oligosaccharide. Each fit is shown from different orientation to approximate a three-dimensional view.

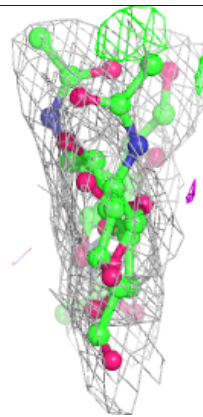
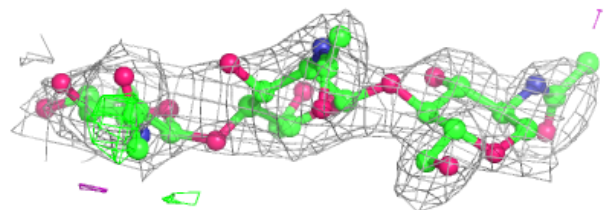
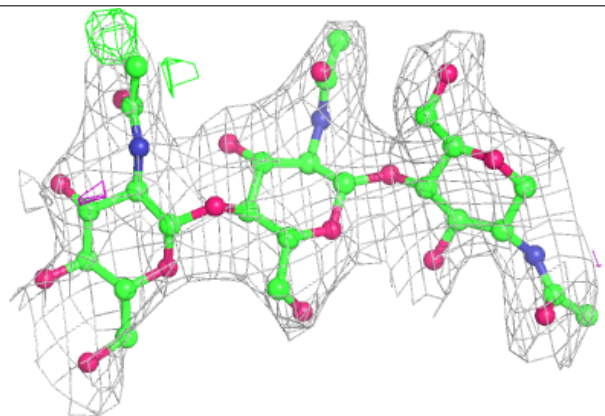


Electron density around Chain D:

$2mF_o-DF_c$ (at 0.7 rmsd) in gray
 mF_o-DF_c (at 3 rmsd) in purple (negative)
and green (positive)

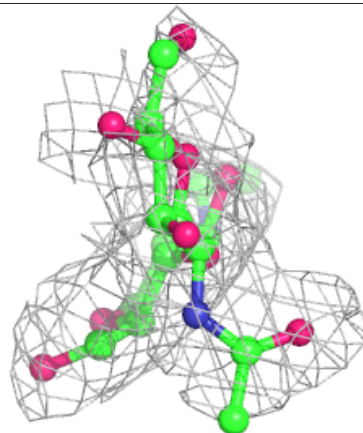
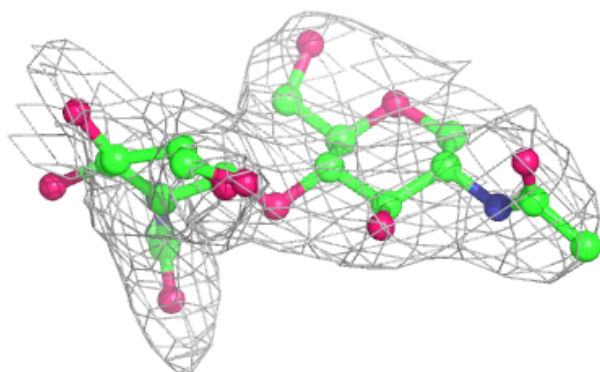
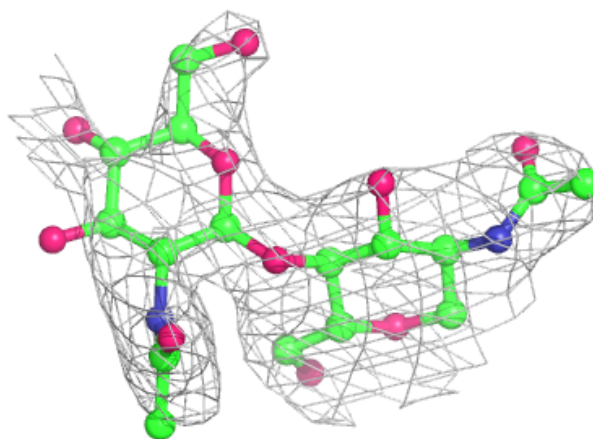
**Electron density around Chain E:**

$2mF_o-DF_c$ (at 0.7 rmsd) in gray
 mF_o-DF_c (at 3 rmsd) in purple (negative)
and green (positive)



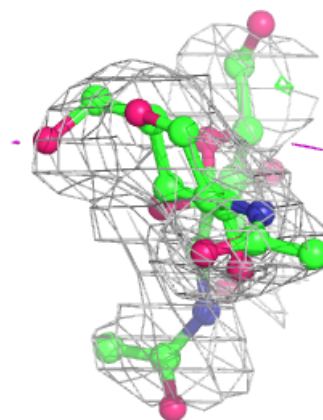
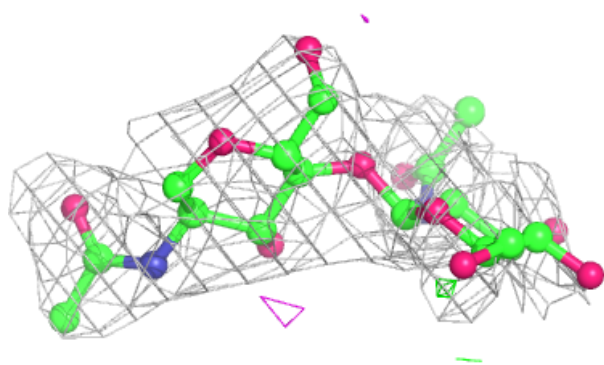
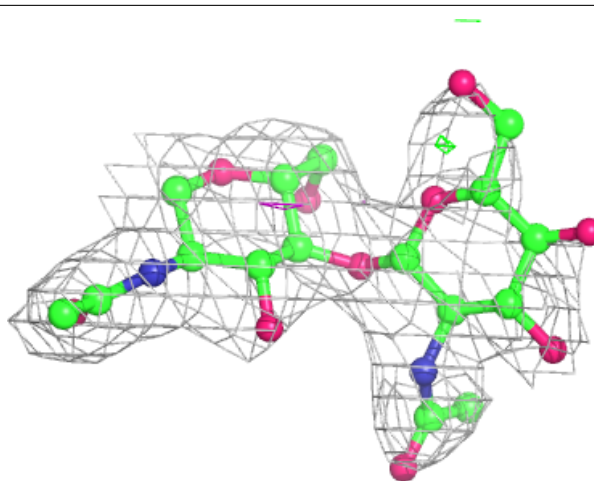
Electron density around Chain C:

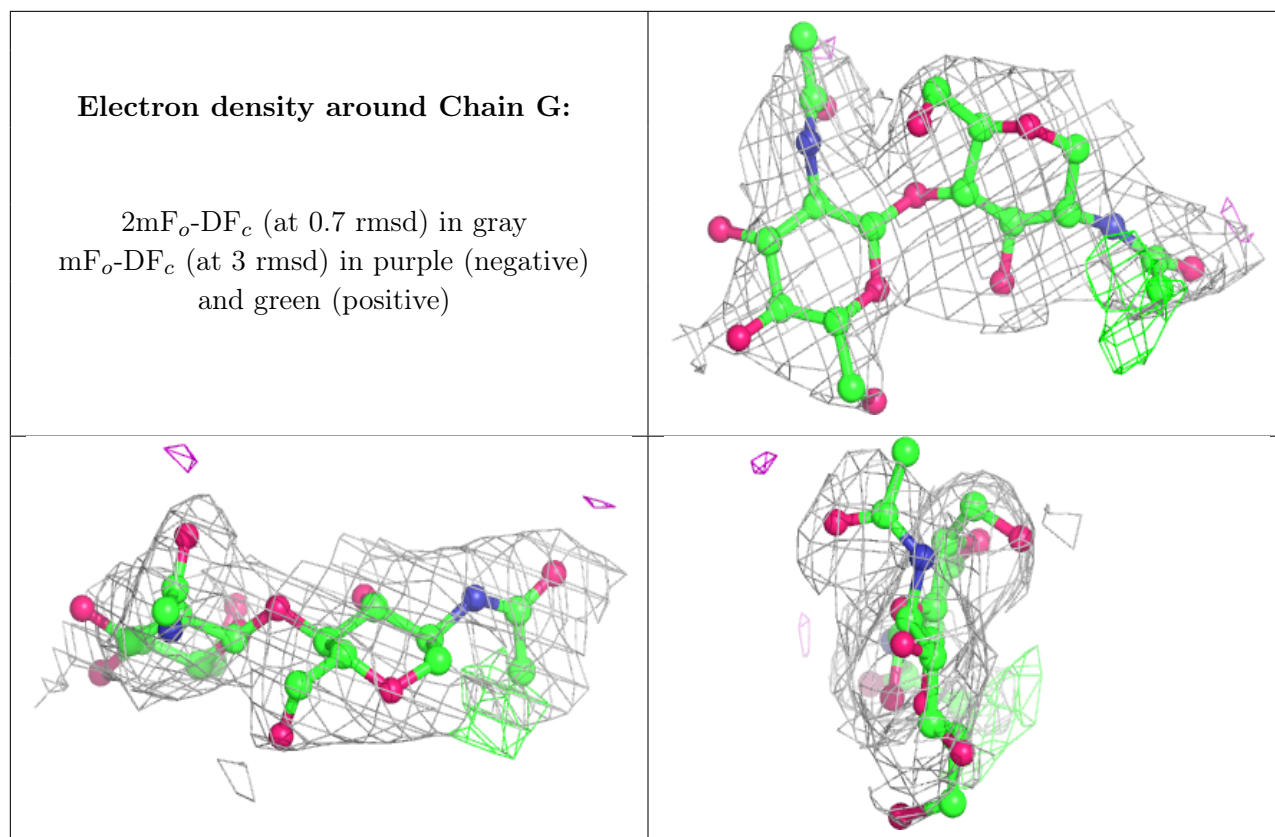
$2mF_o-DF_c$ (at 0.7 rmsd) in gray
 mF_o-DF_c (at 3 rmsd) in purple (negative)
and green (positive)



Electron density around Chain F:

$2mF_o-DF_c$ (at 0.7 rmsd) in gray
 mF_o-DF_c (at 3 rmsd) in purple (negative)
and green (positive)





6.4 Ligands [i](#)

In the following table, the Atoms column lists the number of modelled atoms in the group and the number defined in the chemical component dictionary. The B-factors column lists the minimum, median, 95th percentile and maximum values of B factors of atoms in the group. The column labelled 'Q<0.9' lists the number of atoms with occupancy less than 0.9.

Mol	Type	Chain	Res	Atoms	RSCC	RSR	B-factors(Å ²)	Q<0.9
5	NAG	A	1008	14/15	0.82	0.29	105,144,159,171	0
5	NAG	A	1007	14/15	0.84	0.31	116,140,156,160	0
6	GLU	A	1019	10/10	0.94	0.34	65,75,93,94	0
4	ZN	A	1001	1/1	0.99	0.11	74,74,74,74	0

6.5 Other polymers [i](#)

There are no such residues in this entry.