



Full wwPDB X-ray Structure Validation Report ⓘ

May 26, 2020 – 06:35 am BST

PDB ID : 4K9H
Title : Bace-1 inhibitor complex
Authors : Jordan, S.R.
Deposited on : 2013-04-19
Resolution : 2.29 Å(reported)

This is a Full wwPDB X-ray Structure Validation Report for a publicly released PDB entry.

We welcome your comments at validation@mail.wwpdb.org

A user guide is available at

<https://www.wwpdb.org/validation/2017/XrayValidationReportHelp>

with specific help available everywhere you see the ⓘ symbol.

The following versions of software and data (see [references ⓘ](#)) were used in the production of this report:

MolProbity : 4.02b-467
Mogul : 1.8.5 (274361), CSD as541be (2020)
Xtriage (Phenix) : 1.13
EDS : 2.11
buster-report : 1.1.7 (2018)
Percentile statistics : 20191225.v01 (using entries in the PDB archive December 25th 2019)
Refmac : 5.8.0158
CCP4 : 7.0.044 (Gargrove)
Ideal geometry (proteins) : Engh & Huber (2001)
Ideal geometry (DNA, RNA) : Parkinson et al. (1996)
Validation Pipeline (wwPDB-VP) : 2.11

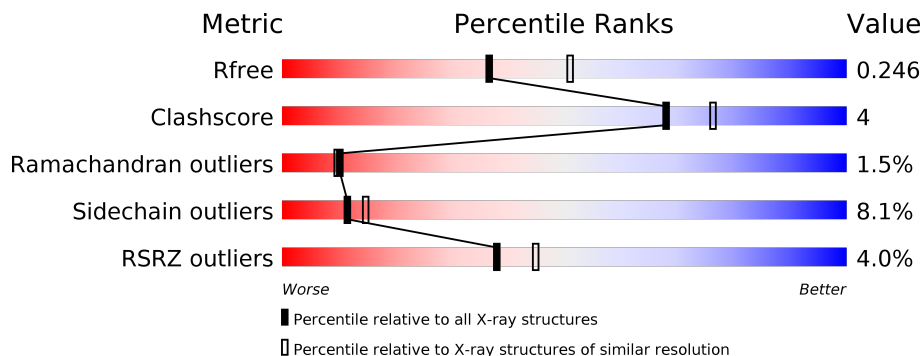
1 Overall quality at a glance

The following experimental techniques were used to determine the structure:

X-RAY DIFFRACTION




The reported resolution of this entry is 2.29 Å.

Percentile scores (ranging between 0-100) for global validation metrics of the entry are shown in the following graphic. The table shows the number of entries on which the scores are based.



Metric	Whole archive (#Entries)	Similar resolution (#Entries, resolution range(Å))
R_{free}	130704	5042 (2.30-2.30)
Clashscore	141614	5643 (2.30-2.30)
Ramachandran outliers	138981	5575 (2.30-2.30)
Sidechain outliers	138945	5575 (2.30-2.30)
RSRZ outliers	127900	4938 (2.30-2.30)

The table below summarises the geometric issues observed across the polymeric chains and their fit to the electron density. The red, orange, yellow and green segments on the lower bar indicate the fraction of residues that contain outliers for ≥ 3 , 2, 1 and 0 types of geometric quality criteria respectively. A grey segment represents the fraction of residues that are not modelled. The numeric value for each fraction is indicated below the corresponding segment, with a dot representing fractions $\leq 5\%$. The upper red bar (where present) indicates the fraction of residues that have poor fit to the electron density. The numeric value is given above the bar.

Mol	Chain	Length	Quality of chain
1	A	388	 7% 80% 12% • 5%
1	B	388	 % 81% 13% • 5%
1	C	388	 3% 81% 13% • 5%

2 Entry composition [i](#)

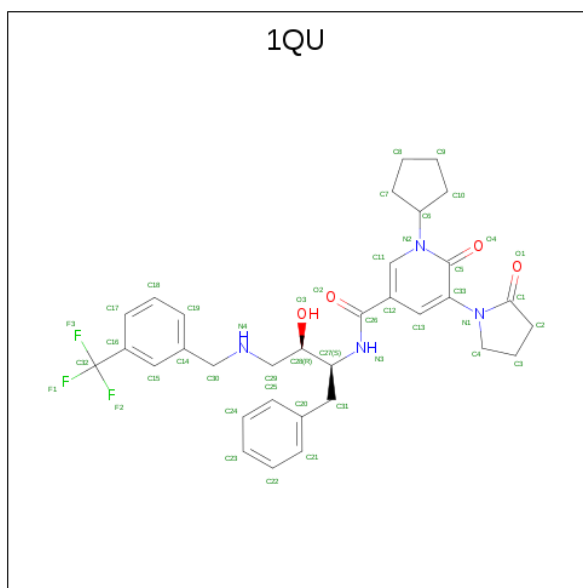
There are 3 unique types of molecules in this entry. The entry contains 8879 atoms, of which 0 are hydrogens and 0 are deuteriums.

In the tables below, the ZeroOcc column contains the number of atoms modelled with zero occupancy, the AltConf column contains the number of residues with at least one atom in alternate conformation and the Trace column contains the number of residues modelled with at most 2 atoms.

- Molecule 1 is a protein called Beta-secretase 1.

Mol	Chain	Residues	Atoms					ZeroOcc	AltConf	Trace
			Total	C	N	O	S			
1	A	370	Total	C	N	O	S	0	0	0
			2915	1869	485	547	14			
1	B	369	Total	C	N	O	S	0	0	0
			2909	1866	484	545	14			
1	C	370	Total	C	N	O	S	0	0	0
			2915	1869	485	547	14			

- Molecule 2 is 1-cyclopentyl-N-[(2S,3R)-3-hydroxy-1-phenyl-4-{3-(trifluoromethyl)benzyl}amino}butan-2-yl]-6-oxo-5-(2-oxopyrrolidin-1-yl)-1,6-dihydropyridine-3-carboxamide (three-letter code: 1QU) (formula: C₃₃H₃₇F₃N₄O₄).



Mol	Chain	Residues	Atoms					ZeroOcc	AltConf
			Total	C	F	N	O		
2	A	1	Total	C	F	N	O	0	0
			44	33	3	4	4		
2	B	1	Total	C	F	N	O	0	0
			44	33	3	4	4		

Continued on next page...

Continued from previous page...

Mol	Chain	Residues	Atoms					ZeroOcc	AltConf
			Total	C	F	N	O		
2	C	1	44	33	3	4	4	0	0

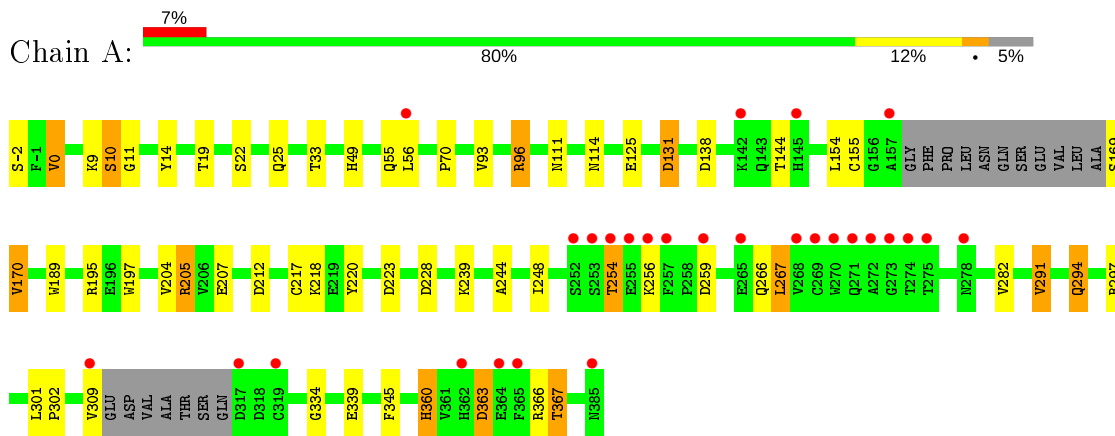
- Molecule 3 is water.

Mol	Chain	Residues	Atoms		ZeroOcc	AltConf
3	A	2	Total	O	0	0
			2	2		
3	B	3	Total	O	0	0
			3	3		
3	C	3	Total	O	0	0
			3	3		

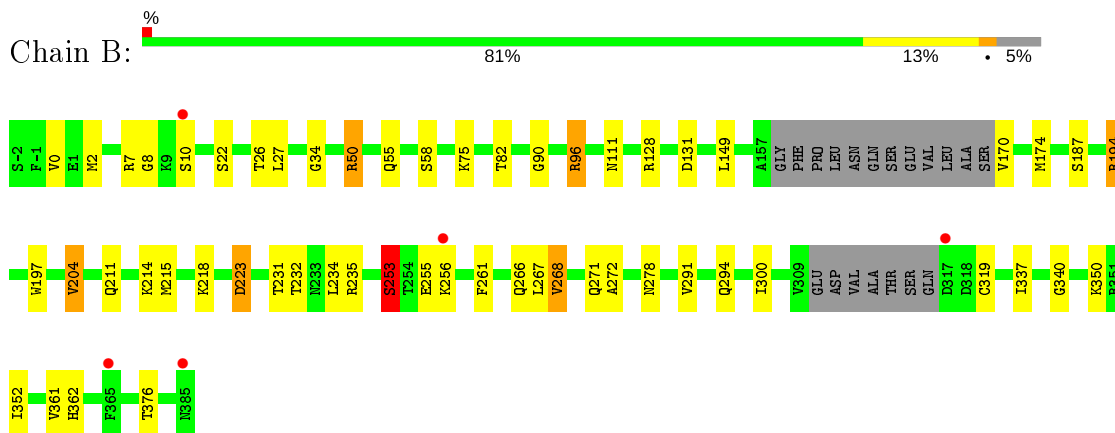
3 Residue-property plots [i](#)

These plots are drawn for all protein, RNA and DNA chains in the entry. The first graphic for a chain summarises the proportions of the various outlier classes displayed in the second graphic. The second graphic shows the sequence view annotated by issues in geometry and electron density. Residues are color-coded according to the number of geometric quality criteria for which they contain at least one outlier: green = 0, yellow = 1, orange = 2 and red = 3 or more. A red dot above a residue indicates a poor fit to the electron density ($RSRZ > 2$). Stretches of 2 or more consecutive residues without any outlier are shown as a green connector. Residues present in the sample, but not in the model, are shown in grey.

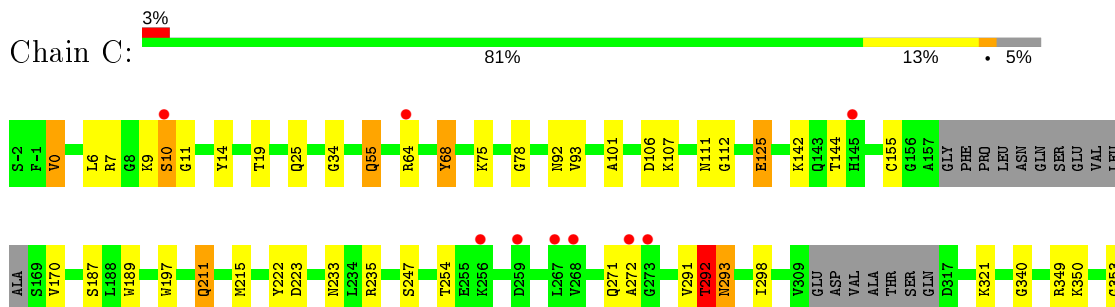
- Molecule 1: Beta-secretase 1

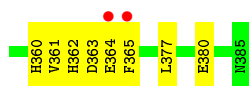


- Molecule 1: Beta-secretase 1



- Molecule 1: Beta-secretase 1





4 Data and refinement statistics

Property	Value	Source
Space group	P 1 21 1	Depositor
Cell constants a, b, c, α , β , γ	82.54Å 103.30Å 100.86Å 90.00° 104.01° 90.00°	Depositor
Resolution (Å)	44.00 – 2.29 44.22 – 2.29	Depositor EDS
% Data completeness (in resolution range)	94.4 (44.00-2.29) 94.4 (44.22-2.29)	Depositor EDS
R_{merge}	0.08	Depositor
R_{sym}	(Not available)	Depositor
$\langle I/\sigma(I) \rangle$ ¹	3.39 (at 2.29Å)	Xtrriage
Refinement program	REFMAC 5.7.0032	Depositor
R, R_{free}	0.199 , 0.248 0.204 , 0.246	Depositor DCC
R_{free} test set	3511 reflections (5.06%)	wwPDB-VP
Wilson B-factor (Å ²)	45.7	Xtrriage
Anisotropy	0.114	Xtrriage
Bulk solvent k_{sol} (e/Å ³), B_{sol} (Å ²)	0.33 , 30.0	EDS
L-test for twinning ²	$\langle L \rangle = 0.49$, $\langle L^2 \rangle = 0.32$	Xtrriage
Estimated twinning fraction	No twinning to report.	Xtrriage
F_o, F_c correlation	0.95	EDS
Total number of atoms	8879	wwPDB-VP
Average B, all atoms (Å ²)	46.0	wwPDB-VP

Xtrriage's analysis on translational NCS is as follows: *The largest off-origin peak in the Patterson function is 4.47% of the height of the origin peak. No significant pseudotranslation is detected.*

¹Intensities estimated from amplitudes.

²Theoretical values of $\langle |L| \rangle$, $\langle L^2 \rangle$ for acentric reflections are 0.5, 0.333 respectively for untwinned datasets, and 0.375, 0.2 for perfectly twinned datasets.

5 Model quality i

5.1 Standard geometry i

Bond lengths and bond angles in the following residue types are not validated in this section: 1QU

The Z score for a bond length (or angle) is the number of standard deviations the observed value is removed from the expected value. A bond length (or angle) with $|Z| > 5$ is considered an outlier worth inspection. RMSZ is the root-mean-square of all Z scores of the bond lengths (or angles).

Mol	Chain	Bond lengths		Bond angles	
		RMSZ	# Z >5	RMSZ	# Z >5
1	A	0.88	0/2989	0.96	6/4060 (0.1%)
1	B	0.96	0/2983	0.99	8/4052 (0.2%)
1	C	0.91	1/2989 (0.0%)	0.95	4/4060 (0.1%)
All	All	0.92	1/8961 (0.0%)	0.97	18/12172 (0.1%)

Chiral center outliers are detected by calculating the chiral volume of a chiral center and verifying if the center is modelled as a planar moiety or with the opposite hand. A planarity outlier is detected by checking planarity of atoms in a peptide group, atoms in a mainchain group or atoms of a sidechain that are expected to be planar.

Mol	Chain	#Chirality outliers	#Planarity outliers
1	B	0	1
1	C	0	3
All	All	0	4

All (1) bond length outliers are listed below:

Mol	Chain	Res	Type	Atoms	Z	Observed(Å)	Ideal(Å)
1	C	68	TYR	CB-CG	-5.70	1.43	1.51

All (18) bond angle outliers are listed below:

Mol	Chain	Res	Type	Atoms	Z	Observed(°)	Ideal(°)
1	B	235	ARG	NE-CZ-NH1	-7.28	116.66	120.30
1	A	96	ARG	NE-CZ-NH2	-6.62	116.99	120.30
1	C	235	ARG	NE-CZ-NH1	-6.53	117.04	120.30
1	C	235	ARG	NE-CZ-NH2	6.52	123.56	120.30
1	A	0	VAL	CB-CA-C	-5.92	100.16	111.40
1	A	138	ASP	CB-CG-OD2	5.79	123.51	118.30
1	B	174	MET	CG-SD-CE	-5.75	91.01	100.20

Continued on next page...

Continued from previous page...

Mol	Chain	Res	Type	Atoms	Z	Observed(°)	Ideal(°)
1	B	128	ARG	NE-CZ-NH2	-5.71	117.45	120.30
1	C	292	THR	N-CA-CB	5.60	120.94	110.30
1	C	0	VAL	CB-CA-C	-5.59	100.79	111.40
1	B	50	ARG	NE-CZ-NH1	5.58	123.09	120.30
1	A	363	ASP	N-CA-C	-5.32	96.64	111.00
1	B	7	ARG	NE-CZ-NH2	-5.15	117.72	120.30
1	B	223	ASP	CB-CG-OD1	-5.12	113.69	118.30
1	B	7	ARG	NE-CZ-NH1	5.09	122.84	120.30
1	B	194	ARG	NE-CZ-NH1	5.09	122.84	120.30
1	A	297	ARG	NE-CZ-NH2	-5.06	117.77	120.30
1	A	96	ARG	CG-CD-NE	-5.05	101.20	111.80

There are no chirality outliers.

All (4) planarity outliers are listed below:

Mol	Chain	Res	Type	Group
1	B	340	GLY	Peptide
1	C	222	TYR	Peptide
1	C	292	THR	Peptide
1	C	340	GLY	Peptide

5.2 Too-close contacts

In the following table, the Non-H and H(model) columns list the number of non-hydrogen atoms and hydrogen atoms in the chain respectively. The H(added) column lists the number of hydrogen atoms added and optimized by MolProbity. The Clashes column lists the number of clashes within the asymmetric unit, whereas Symm-Clashes lists symmetry related clashes.

Mol	Chain	Non-H	H(model)	H(added)	Clashes	Symm-Clashes
1	A	2915	0	2833	23	0
1	B	2909	0	2828	17	0
1	C	2915	0	2833	27	0
2	A	44	0	37	0	0
2	B	44	0	36	3	0
2	C	44	0	36	2	0
3	A	2	0	0	0	0
3	B	3	0	0	0	0
3	C	3	0	0	0	0
All	All	8879	0	8603	66	0

The all-atom clashscore is defined as the number of clashes found per 1000 atoms (including

hydrogen atoms). The all-atom clashscore for this structure is 4.

All (66) close contacts within the same asymmetric unit are listed below, sorted by their clash magnitude.

Atom-1	Atom-2	Interatomic distance (Å)	Clash overlap (Å)
1:C:55:GLN:H	1:C:55:GLN:HE21	1.26	0.79
1:C:10:SER:OG	1:C:11:GLY:N	2.20	0.74
1:A:10:SER:OG	1:A:11:GLY:N	2.25	0.70
1:C:9:LYS:O	1:C:10:SER:HB3	1.91	0.70
1:C:363:ASP:O	1:C:365:PHE:N	2.26	0.68
1:A:205:ARG:NH2	1:A:207:GLU:OE2	2.31	0.64
1:C:9:LYS:O	1:C:10:SER:CB	2.46	0.64
1:C:55:GLN:NE2	1:C:55:GLN:H	1.97	0.63
1:B:271:GLN:OE1	1:B:271:GLN:N	2.31	0.62
1:A:266:GLN:O	1:A:267:LEU:HB2	2.00	0.61
1:A:205:ARG:NH1	1:A:212:ASP:OD2	2.35	0.59
1:A:155:CYS:O	1:A:170:VAL:HG22	2.05	0.56
1:C:292:THR:O	1:C:293:ASN:CB	2.51	0.56
1:A:291:VAL:HG12	1:A:294:GLN:HB3	1.87	0.55
1:B:204:VAL:HG13	1:B:376:THR:HG21	1.89	0.55
1:C:125:GLU:HG3	1:C:125:GLU:O	2.09	0.53
1:A:93:VAL:HG21	1:A:144:THR:CG2	2.39	0.52
1:A:33:THR:HG21	1:A:345:PHE:CZ	2.44	0.52
1:C:291:VAL:O	1:C:292:THR:HG23	2.10	0.52
1:A:154:LEU:O	1:A:339:GLU:HA	2.10	0.51
1:A:205:ARG:CZ	1:A:212:ASP:OD2	2.59	0.51
1:C:155:CYS:O	1:C:170:VAL:HG13	2.11	0.50
1:B:261:PHE:CE1	1:B:268:VAL:HG23	2.49	0.48
1:A:93:VAL:HG21	1:A:144:THR:HG21	1.95	0.48
1:A:244:ALA:O	1:A:248:ILE:HG13	2.13	0.47
1:B:271:GLN:O	1:B:272:ALA:C	2.53	0.47
1:C:233:ASN:HB2	2:C:401:1QU:H3	1.96	0.47
1:A:301:LEU:HB3	1:A:302:PRO:HD2	1.97	0.46
1:A:217:CYS:HA	1:A:220:TYR:CD2	2.50	0.46
1:A:291:VAL:HG12	1:A:294:GLN:CB	2.45	0.46
1:B:34:GLY:O	2:B:401:1QU:H35	2.16	0.46
1:A:56:LEU:HD12	1:A:56:LEU:O	2.16	0.46
1:B:149:LEU:N	1:B:149:LEU:HD23	2.31	0.46
1:B:234:LEU:HB2	1:B:337:ILE:HD11	1.98	0.46
1:C:292:THR:O	1:C:293:ASN:HB3	2.16	0.45
1:C:78:GLY:HA3	1:C:101:ALA:O	2.17	0.45
1:C:189:TRP:O	1:C:353:GLY:HA2	2.17	0.45
1:C:349:ARG:O	1:C:350:LYS:HB2	2.17	0.44

Continued on next page...

Continued from previous page...

Atom-1	Atom-2	Interatomic distance (Å)	Clash overlap (Å)
1:C:6:LEU:O	1:C:7:ARG:NH1	2.50	0.44
1:A:189:TRP:CZ3	1:B:291:VAL:HG13	2.53	0.44
1:A:204:VAL:O	1:A:205:ARG:HG2	2.18	0.44
1:B:350:LYS:HB3	1:B:350:LYS:HE3	1.75	0.43
1:A:19:THR:HA	1:A:25:GLN:O	2.18	0.43
1:C:106:ASP:OD1	1:C:107:LYS:HG3	2.19	0.43
1:C:14:TYR:CE2	1:C:170:VAL:CG1	3.01	0.43
1:B:231:THR:HG23	2:B:401:1QU:H5	2.00	0.43
1:B:232:THR:OG1	2:B:401:1QU:H10	2.19	0.43
1:C:93:VAL:HG21	1:C:144:THR:HG21	2.01	0.42
1:A:363:ASP:HB3	1:A:366:ARG:H	1.83	0.42
1:C:9:LYS:HE2	1:C:112:GLY:O	2.19	0.42
1:B:82:THR:HB	1:B:96:ARG:HD3	2.01	0.42
1:A:14:TYR:CE2	1:A:170:VAL:HG13	2.54	0.42
1:C:9:LYS:CE	1:C:112:GLY:O	2.68	0.42
1:C:19:THR:HA	1:C:25:GLN:O	2.20	0.42
1:A:360:HIS:CE1	1:A:367:THR:HG22	2.55	0.41
1:B:253:SER:C	1:B:255:GLU:H	2.23	0.41
1:C:93:VAL:HG21	1:C:144:THR:CG2	2.50	0.41
1:B:8:GLY:C	1:B:170:VAL:HG12	2.41	0.41
1:C:14:TYR:CE2	1:C:170:VAL:HG12	2.56	0.41
1:C:211:GLN:HB2	1:C:211:GLN:HE21	1.71	0.41
1:C:298:ILE:HG21	1:C:298:ILE:HD13	1.77	0.41
1:C:34:GLY:O	2:C:401:1QU:H35	2.20	0.41
1:A:228:ASP:O	1:A:334:GLY:HA2	2.21	0.40
1:B:268:VAL:O	1:B:319:CYS:HA	2.21	0.40
1:B:2:MET:HG2	1:B:90:GLY:HA2	2.04	0.40
1:B:26:THR:C	1:B:27:LEU:HG	2.42	0.40

There are no symmetry-related clashes.

5.3 Torsion angles [i](#)

5.3.1 Protein backbone [i](#)

In the following table, the Percentiles column shows the percent Ramachandran outliers of the chain as a percentile score with respect to all X-ray entries followed by that with respect to entries of similar resolution.

The Analysed column shows the number of residues for which the backbone conformation was analysed, and the total number of residues.

Mol	Chain	Analysed	Favoured	Allowed	Outliers	Percentiles
1	A	364/388 (94%)	342 (94%)	15 (4%)	7 (2%)	8 7
1	B	363/388 (94%)	349 (96%)	11 (3%)	3 (1%)	19 23
1	C	364/388 (94%)	343 (94%)	15 (4%)	6 (2%)	9 9
All	All	1091/1164 (94%)	1034 (95%)	41 (4%)	16 (2%)	10 10

All (16) Ramachandran outliers are listed below:

Mol	Chain	Res	Type
1	A	267	LEU
1	B	10	SER
1	B	223	ASP
1	C	10	SER
1	C	272	ALA
1	C	364	GLU
1	A	254	THR
1	A	10	SER
1	A	131	ASP
1	A	223	ASP
1	C	223	ASP
1	A	125	GLU
1	B	253	SER
1	A	70	PRO
1	C	254	THR
1	C	292	THR

5.3.2 Protein sidechains [i](#)

In the following table, the Percentiles column shows the percent sidechain outliers of the chain as a percentile score with respect to all X-ray entries followed by that with respect to entries of similar resolution.

The Analysed column shows the number of residues for which the sidechain conformation was analysed, and the total number of residues.

Mol	Chain	Analysed	Rotameric	Outliers	Percentiles
1	A	316/331 (96%)	290 (92%)	26 (8%)	11 14
1	B	315/331 (95%)	287 (91%)	28 (9%)	9 11
1	C	316/331 (96%)	293 (93%)	23 (7%)	14 18
All	All	947/993 (95%)	870 (92%)	77 (8%)	11 15

All (77) residues with a non-rotameric sidechain are listed below:

Mol	Chain	Res	Type
1	A	-2	SER
1	A	0	VAL
1	A	9	LYS
1	A	22	SER
1	A	49	HIS
1	A	55	GLN
1	A	96	ARG
1	A	111	ASN
1	A	114	ASN
1	A	131	ASP
1	A	169	SER
1	A	170	VAL
1	A	195	ARG
1	A	197	TRP
1	A	205	ARG
1	A	218	LYS
1	A	239	LYS
1	A	254	THR
1	A	256	LYS
1	A	259	ASP
1	A	282	VAL
1	A	291	VAL
1	A	294	GLN
1	A	309	VAL
1	A	360	HIS
1	A	367	THR
1	B	0	VAL
1	B	22	SER
1	B	50	ARG
1	B	55	GLN
1	B	58	SER
1	B	75	LYS
1	B	96	ARG
1	B	111	ASN
1	B	131	ASP
1	B	187	SER
1	B	194	ARG
1	B	197	TRP
1	B	204	VAL
1	B	211	GLN
1	B	214	LYS
1	B	215	MET
1	B	218	LYS

Continued on next page...

Continued from previous page...

Mol	Chain	Res	Type
1	B	253	SER
1	B	256	LYS
1	B	266	GLN
1	B	267	LEU
1	B	268	VAL
1	B	278	ASN
1	B	294	GLN
1	B	300	ILE
1	B	352	ILE
1	B	361	VAL
1	B	362	HIS
1	C	0	VAL
1	C	55	GLN
1	C	64	ARG
1	C	68	TYR
1	C	75	LYS
1	C	92	ASN
1	C	111	ASN
1	C	125	GLU
1	C	142	LYS
1	C	187	SER
1	C	197	TRP
1	C	211	GLN
1	C	215	MET
1	C	247	SER
1	C	271	GLN
1	C	292	THR
1	C	293	ASN
1	C	321	LYS
1	C	360	HIS
1	C	361	VAL
1	C	362	HIS
1	C	377	LEU
1	C	380	GLU

Some sidechains can be flipped to improve hydrogen bonding and reduce clashes. All (14) such sidechains are listed below:

Mol	Chain	Res	Type
1	A	111	ASN
1	A	271	GLN
1	A	304	GLN
1	A	360	HIS

Continued on next page...

Continued from previous page...

Mol	Chain	Res	Type
1	B	28	ASN
1	B	111	ASN
1	B	278	ASN
1	C	28	ASN
1	C	53	GLN
1	C	55	GLN
1	C	98	ASN
1	C	111	ASN
1	C	271	GLN
1	C	326	GLN

5.3.3 RNA [i](#)

There are no RNA molecules in this entry.

5.4 Non-standard residues in protein, DNA, RNA chains [i](#)

There are no non-standard protein/DNA/RNA residues in this entry.

5.5 Carbohydrates [i](#)

There are no carbohydrates in this entry.

5.6 Ligand geometry [i](#)

3 ligands are modelled in this entry.

In the following table, the Counts columns list the number of bonds (or angles) for which Mogul statistics could be retrieved, the number of bonds (or angles) that are observed in the model and the number of bonds (or angles) that are defined in the Chemical Component Dictionary. The Link column lists molecule types, if any, to which the group is linked. The Z score for a bond length (or angle) is the number of standard deviations the observed value is removed from the expected value. A bond length (or angle) with $|Z| > 2$ is considered an outlier worth inspection. RMSZ is the root-mean-square of all Z scores of the bond lengths (or angles).

Mol	Type	Chain	Res	Link	Bond lengths			Bond angles		
					Counts	RMSZ	# Z > 2	Counts	RMSZ	# Z > 2
2	1QU	B	401	-	46,48,48	1.81	5 (10%)	59,68,68	2.22	15 (25%)
2	1QU	C	401	-	46,48,48	1.57	6 (13%)	59,68,68	2.49	13 (22%)
2	1QU	A	401	-	46,48,48	1.88	6 (13%)	59,68,68	1.43	8 (13%)

In the following table, the Chirals column lists the number of chiral outliers, the number of chiral centers analysed, the number of these observed in the model and the number defined in the Chemical Component Dictionary. Similar counts are reported in the Torsion and Rings columns. '-' means no outliers of that kind were identified.

Mol	Type	Chain	Res	Link	Chirals	Torsions	Rings
2	1QU	B	401	-	-	2/32/53/53	0/5/5/5
2	1QU	C	401	-	-	6/32/53/53	0/5/5/5
2	1QU	A	401	-	-	2/32/53/53	0/5/5/5

All (17) bond length outliers are listed below:

Mol	Chain	Res	Type	Atoms	Z	Observed(Å)	Ideal(Å)
2	A	401	1QU	C33-N1	-9.86	1.31	1.44
2	B	401	1QU	C33-N1	-9.18	1.32	1.44
2	C	401	1QU	C33-N1	-6.98	1.35	1.44
2	A	401	1QU	C32-C16	4.31	1.59	1.49
2	C	401	1QU	C29-C28	3.65	1.57	1.52
2	B	401	1QU	C11-C12	-3.44	1.33	1.39
2	A	401	1QU	C30-C14	2.80	1.57	1.51
2	A	401	1QU	C12-C26	2.64	1.55	1.50
2	C	401	1QU	C31-C27	2.63	1.59	1.53
2	B	401	1QU	O3-C28	2.63	1.48	1.43
2	C	401	1QU	C29-N4	2.58	1.51	1.47
2	A	401	1QU	C5-N2	-2.54	1.34	1.38
2	C	401	1QU	C5-N2	-2.22	1.35	1.38
2	B	401	1QU	C4-N1	2.11	1.50	1.47
2	A	401	1QU	C28-C27	-2.09	1.50	1.53
2	C	401	1QU	C12-C26	2.09	1.54	1.50
2	B	401	1QU	C1-N1	-2.02	1.33	1.36

All (36) bond angle outliers are listed below:

Mol	Chain	Res	Type	Atoms	Z	Observed(°)	Ideal(°)
2	C	401	1QU	C2-C1-N1	10.52	115.29	108.23
2	B	401	1QU	C2-C1-N1	9.83	114.83	108.23
2	C	401	1QU	C9-C10-C6	-6.97	88.94	104.32
2	B	401	1QU	C8-C7-C6	-6.10	90.85	104.32
2	C	401	1QU	C8-C7-C6	-5.57	92.02	104.32
2	C	401	1QU	F1-C32-C16	-4.89	102.19	112.93
2	C	401	1QU	C28-C29-N4	-4.85	105.32	111.97
2	B	401	1QU	F2-C32-C16	-4.52	103.00	112.93
2	B	401	1QU	C10-C6-C7	4.19	109.95	104.25
2	A	401	1QU	C28-C27-N3	4.13	117.88	109.92

Continued on next page...

Continued from previous page...

Mol	Chain	Res	Type	Atoms	Z	Observed(°)	Ideal(°)
2	B	401	1QU	C9-C10-C6	-3.99	95.52	104.32
2	C	401	1QU	O1-C1-C2	-3.85	117.24	127.08
2	C	401	1QU	C4-N1-C1	-3.62	109.57	112.95
2	C	401	1QU	C5-C33-N1	-3.53	115.93	120.11
2	A	401	1QU	F1-C32-C16	-3.51	105.21	112.93
2	A	401	1QU	O1-C1-N1	3.48	127.62	125.40
2	A	401	1QU	C5-C33-N1	-3.42	116.06	120.11
2	C	401	1QU	C4-N1-C33	-3.26	115.62	121.40
2	A	401	1QU	C2-C1-N1	3.21	110.39	108.23
2	C	401	1QU	C3-C4-N1	-3.11	100.08	103.42
2	A	401	1QU	C28-C29-N4	-2.90	107.99	111.97
2	B	401	1QU	O1-C1-C2	-2.58	120.48	127.08
2	B	401	1QU	C13-C12-C26	2.48	128.66	120.44
2	B	401	1QU	C31-C27-C28	-2.48	107.49	111.65
2	B	401	1QU	C4-N1-C1	-2.48	110.63	112.95
2	B	401	1QU	C28-C29-N4	-2.46	108.59	111.97
2	B	401	1QU	C18-C19-C14	-2.43	116.91	120.63
2	C	401	1QU	F2-C32-C16	-2.40	107.66	112.93
2	C	401	1QU	C3-C2-C1	-2.36	97.67	104.48
2	A	401	1QU	C10-C6-C7	2.32	107.42	104.25
2	C	401	1QU	C13-C12-C26	2.31	128.07	120.44
2	B	401	1QU	C12-C13-C33	2.26	123.07	118.61
2	A	401	1QU	C13-C33-N1	2.10	123.40	118.86
2	B	401	1QU	C14-C30-N4	-2.10	107.37	112.80
2	B	401	1QU	C28-C27-N3	2.09	113.94	109.92
2	B	401	1QU	F3-C32-C16	2.02	117.37	112.93

There are no chirality outliers.

All (10) torsion outliers are listed below:

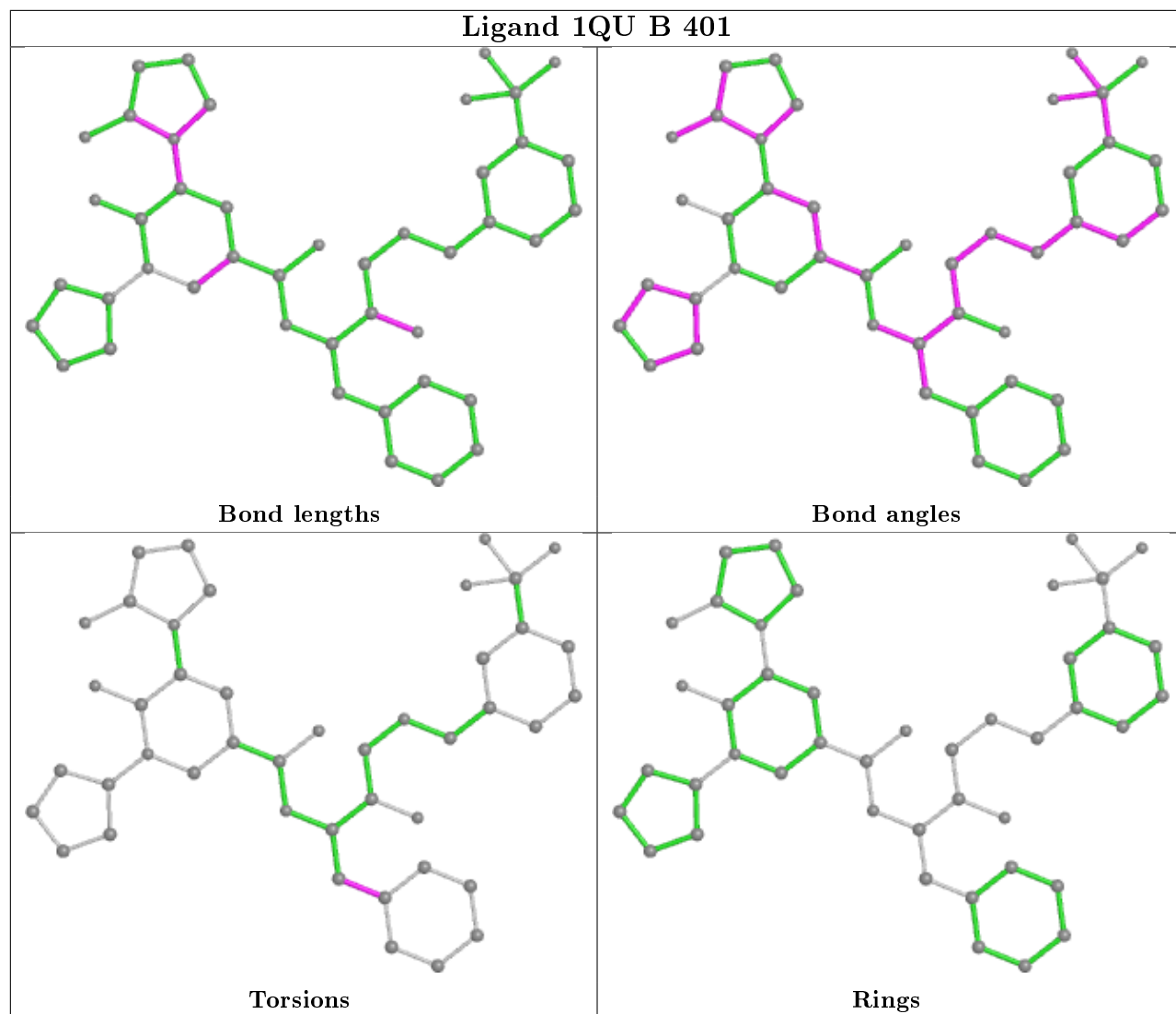
Mol	Chain	Res	Type	Atoms
2	C	401	1QU	O3-C28-C29-N4
2	B	401	1QU	C21-C20-C31-C27
2	C	401	1QU	C21-C20-C31-C27
2	B	401	1QU	C25-C20-C31-C27
2	C	401	1QU	C14-C30-N4-C29
2	A	401	1QU	C21-C20-C31-C27
2	C	401	1QU	C25-C20-C31-C27
2	C	401	1QU	C27-C28-C29-N4
2	A	401	1QU	C25-C20-C31-C27
2	C	401	1QU	N3-C27-C31-C20

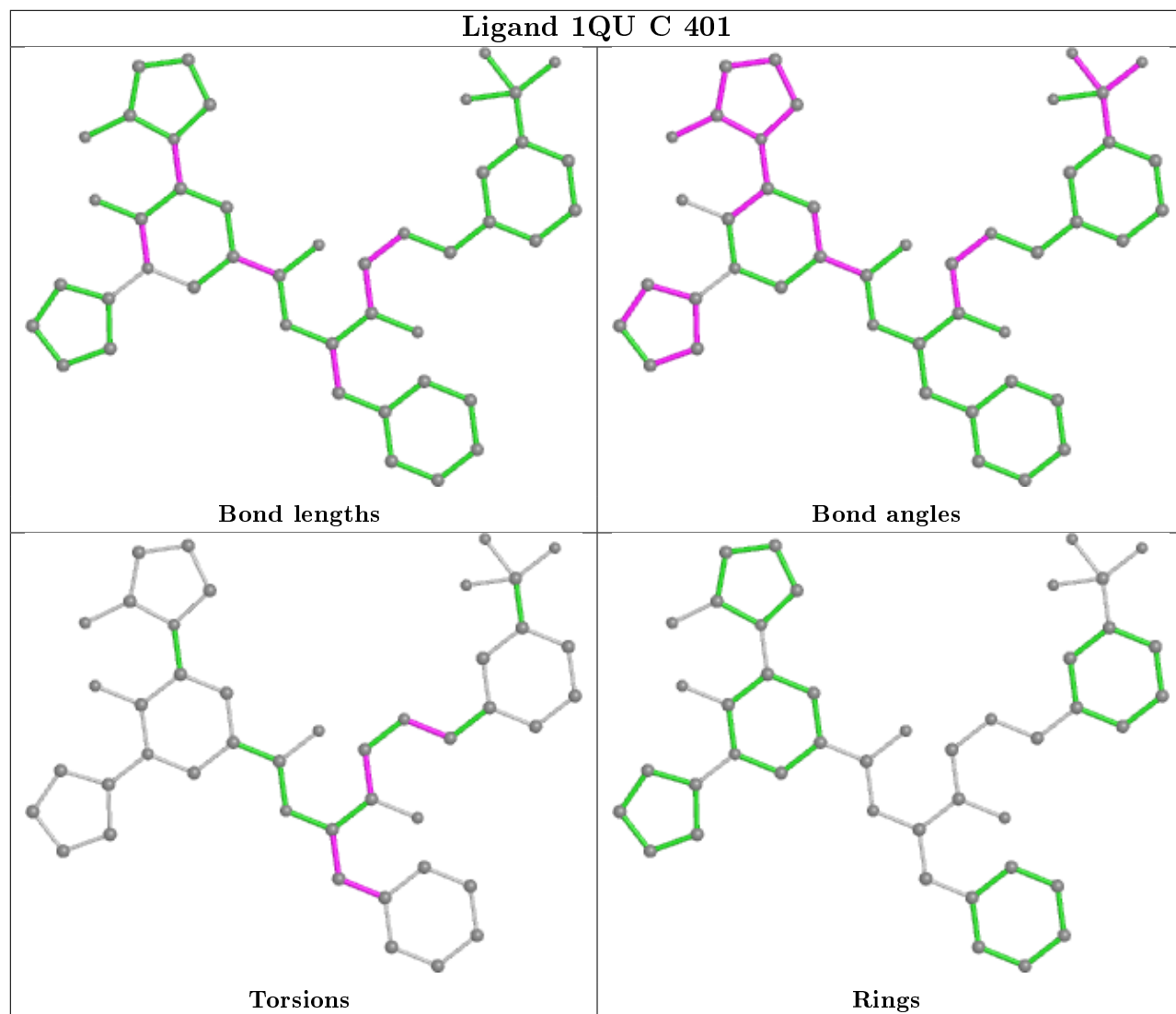
There are no ring outliers.

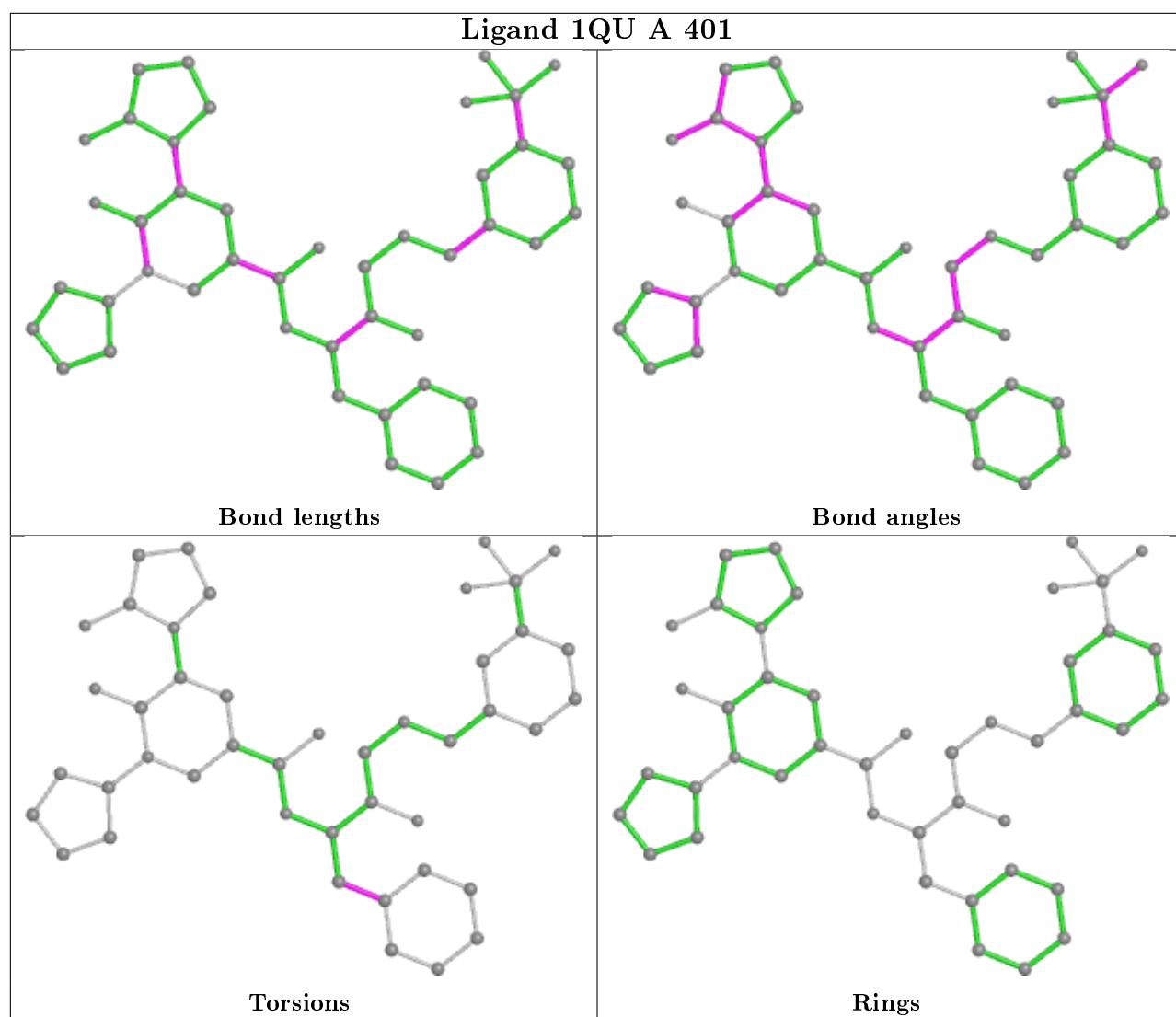
2 monomers are involved in 5 short contacts:

Mol	Chain	Res	Type	Clashes	Symm-Clashes
2	B	401	1QU	3	0
2	C	401	1QU	2	0

The following is a two-dimensional graphical depiction of Mogul quality analysis of bond lengths, bond angles, torsion angles, and ring geometry for all instances of the Ligand of Interest. In addition, ligands with molecular weight > 250 and outliers as shown on the validation Tables will also be included. For torsion angles, if less than 5% of the Mogul distribution of torsion angles is within 10 degrees of the torsion angle in question, then that torsion angle is considered an outlier. Any bond that is central to one or more torsion angles identified as an outlier by Mogul will be highlighted in the graph. For rings, the root-mean-square deviation (RMSD) between the ring in question and similar rings identified by Mogul is calculated over all ring torsion angles. If the average RMSD is greater than 60 degrees and the minimal RMSD between the ring in question and any Mogul-identified rings is also greater than 60 degrees, then that ring is considered an outlier. The outliers are highlighted in purple. The color gray indicates Mogul did not find sufficient equivalents in the CSD to analyse the geometry.







5.7 Other polymers [\(i\)](#)

There are no such residues in this entry.

5.8 Polymer linkage issues [\(i\)](#)

There are no chain breaks in this entry.

6 Fit of model and data

6.1 Protein, DNA and RNA chains

In the following table, the column labelled ‘#RSRZ> 2’ contains the number (and percentage) of RSRZ outliers, followed by percent RSRZ outliers for the chain as percentile scores relative to all X-ray entries and entries of similar resolution. The OWAB column contains the minimum, median, 95th percentile and maximum values of the occupancy-weighted average B-factor per residue. The column labelled ‘Q< 0.9’ lists the number of (and percentage) of residues with an average occupancy less than 0.9.

Mol	Chain	Analysed	<RSRZ>	#RSRZ>2	OWAB(Å ²)	Q<0.9
1	A	370/388 (95%)	0.36	28 (7%) 13 18	26, 45, 84, 116	0
1	B	369/388 (95%)	0.08	5 (1%) 75 80	25, 41, 72, 112	0
1	C	370/388 (95%)	0.04	11 (2%) 50 57	27, 43, 75, 104	0
All	All	1109/1164 (95%)	0.16	44 (3%) 38 45	25, 43, 78, 116	0

All (44) RSRZ outliers are listed below:

Mol	Chain	Res	Type	RSRZ
1	A	254	THR	5.6
1	A	273	GLY	5.0
1	C	272	ALA	4.6
1	B	10	SER	4.3
1	A	272	ALA	4.2
1	A	317	ASP	4.0
1	A	274	THR	3.8
1	A	271	GLN	3.7
1	A	275	THR	3.4
1	A	257	PHE	3.4
1	C	364	GLU	3.2
1	A	268	VAL	2.9
1	A	365	PHE	2.8
1	A	309	VAL	2.8
1	A	145	HIS	2.8
1	A	270	TRP	2.8
1	C	145	HIS	2.7
1	A	255	GLU	2.6
1	A	269	CYS	2.6
1	A	319	CYS	2.6
1	A	256	LYS	2.6
1	B	385	ASN	2.5
1	A	362	HIS	2.5

Continued on next page...

Continued from previous page...

Mol	Chain	Res	Type	RSRZ
1	C	365	PHE	2.5
1	B	317	ASP	2.5
1	C	259	ASP	2.4
1	C	256	LYS	2.4
1	C	268	VAL	2.4
1	A	253	SER	2.4
1	A	265	GLU	2.3
1	C	10	SER	2.3
1	B	256	LYS	2.3
1	C	273	GLY	2.3
1	A	364	GLU	2.3
1	C	64	ARG	2.2
1	A	278	ASN	2.2
1	A	385	ASN	2.2
1	A	259	ASP	2.2
1	B	365	PHE	2.1
1	A	142	LYS	2.1
1	A	252	SER	2.1
1	A	56	LEU	2.1
1	A	157	ALA	2.0
1	C	267	LEU	2.0

6.2 Non-standard residues in protein, DNA, RNA chains [i](#)

There are no non-standard protein/DNA/RNA residues in this entry.

6.3 Carbohydrates [i](#)

There are no carbohydrates in this entry.

6.4 Ligands [i](#)

In the following table, the Atoms column lists the number of modelled atoms in the group and the number defined in the chemical component dictionary. The B-factors column lists the minimum, median, 95th percentile and maximum values of B factors of atoms in the group. The column labelled 'Q< 0.9' lists the number of atoms with occupancy less than 0.9.

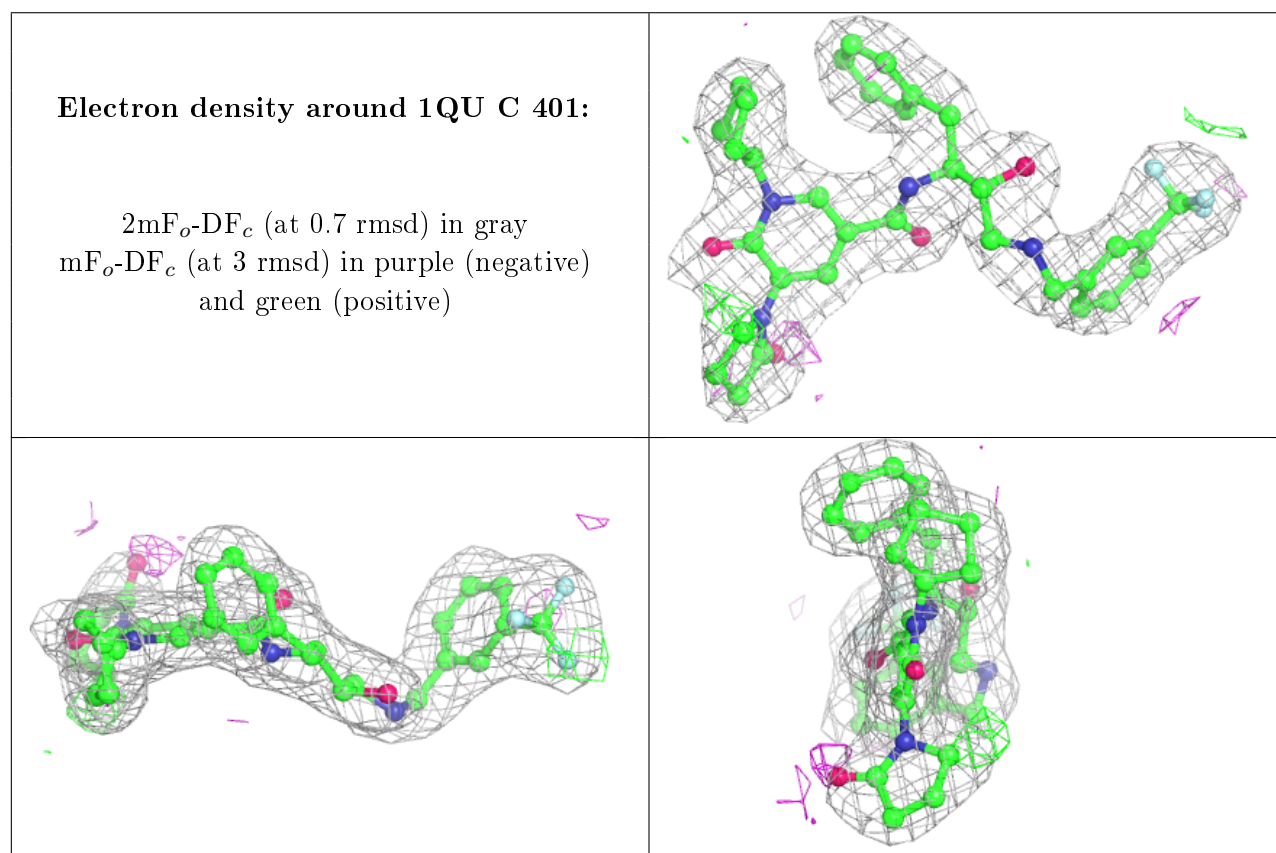
Mol	Type	Chain	Res	Atoms	RSCC	RSR	B-factors(\AA^2)	Q<0.9
2	1QU	C	401	44/44	0.96	0.15	31,36,49,62	0
2	1QU	B	401	44/44	0.97	0.16	25,34,47,64	0

Continued on next page...

Continued from previous page...

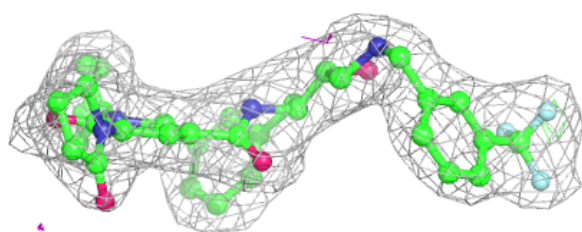
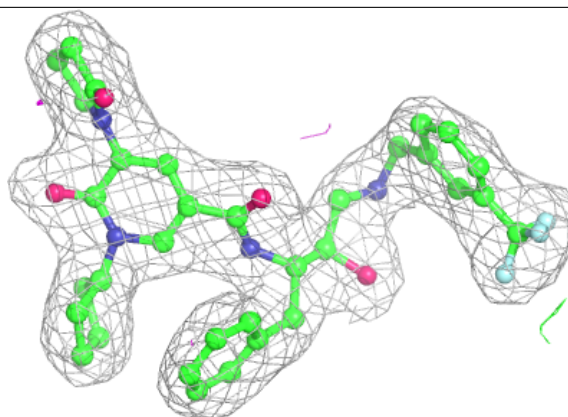
Mol	Type	Chain	Res	Atoms	RSCC	RSR	B-factors(\AA^2)	Q<0.9
2	1QU	A	401	44/44	0.97	0.14	31,39,52,59	0

The following is a graphical depiction of the model fit to experimental electron density of all instances of the Ligand of Interest. In addition, ligands with molecular weight > 250 and outliers as shown on the geometry validation Tables will also be included. Each fit is shown from different orientation to approximate a three-dimensional view.

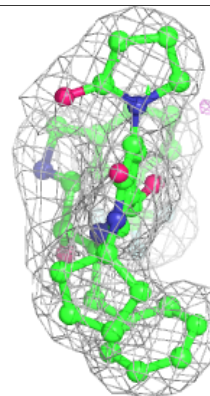
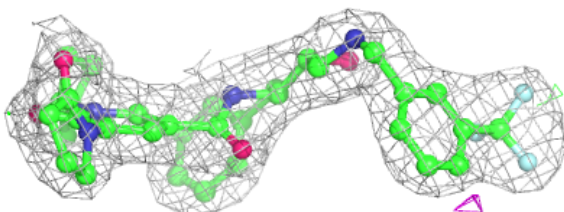
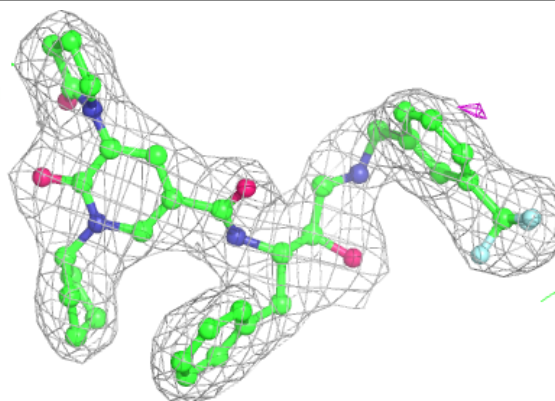


Electron density around 1QU B 401:

$2mF_o-DF_c$ (at 0.7 rmsd) in gray
 mF_o-DF_c (at 3 rmsd) in purple (negative)
and green (positive)

**Electron density around 1QU A 401:**

$2mF_o-DF_c$ (at 0.7 rmsd) in gray
 mF_o-DF_c (at 3 rmsd) in purple (negative)
and green (positive)



6.5 Other polymers

There are no such residues in this entry.