



Full wwPDB X-ray Structure Validation Report ⓘ

Feb 19, 2024 – 01:44 AM EST

PDB ID : 4HXE
Title : Pyrococcus horikoshii acylaminoacyl peptidase (uncomplexed)
Authors : Tichy-Racs, E.; Hornung, B.; Radi, K.; Menyhard, D.K.; Kiss-Szeman, A.; Szeltner, Z.; Domokos, K.; Szamosi, I.; Naray-Szabo, G.; Polgar, L.; Harmat, V.
Deposited on : 2012-11-09
Resolution : 1.91 Å(reported)

This is a Full wwPDB X-ray Structure Validation Report for a publicly released PDB entry.

We welcome your comments at validation@mail.wwpdb.org

A user guide is available at

<https://www.wwpdb.org/validation/2017/XrayValidationReportHelp>

with specific help available everywhere you see the ⓘ symbol.

The types of validation reports are described at

<http://www.wwpdb.org/validation/2017/FAQs#types>.

The following versions of software and data (see [references ⓘ](#)) were used in the production of this report:

MolProbity : 4.02b-467
Mogul : 1.8.5 (274361), CSD as541be (2020)
Xtriage (Phenix) : 1.13
EDS : 2.36
Percentile statistics : 20191225.v01 (using entries in the PDB archive December 25th 2019)
Refmac : 5.8.0158
CCP4 : 7.0.044 (Gargrove)
Ideal geometry (proteins) : Engh & Huber (2001)
Ideal geometry (DNA, RNA) : Parkinson et al. (1996)
Validation Pipeline (wwPDB-VP) : 2.36

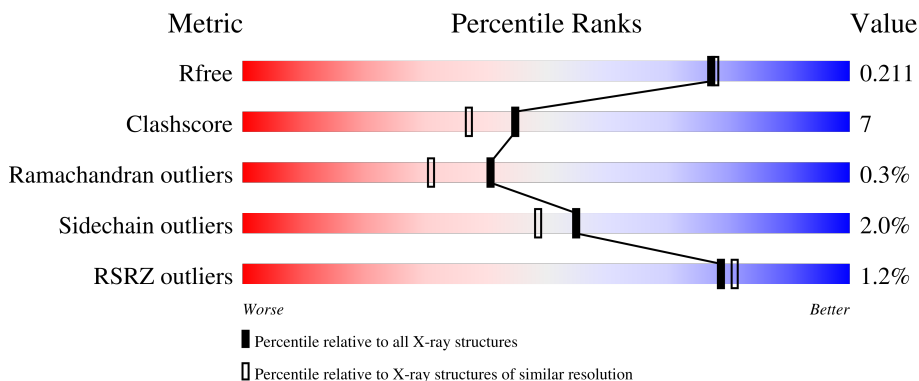
1 Overall quality at a glance i

The following experimental techniques were used to determine the structure:

X-RAY DIFFRACTION

The reported resolution of this entry is 1.91 Å.

Percentile scores (ranging between 0-100) for global validation metrics of the entry are shown in the following graphic. The table shows the number of entries on which the scores are based.



Metric	Whole archive (#Entries)	Similar resolution (#Entries, resolution range(Å))
R_{free}	130704	7937 (1.94-1.90)
Clashscore	141614	8644 (1.94-1.90)
Ramachandran outliers	138981	8530 (1.94-1.90)
Sidechain outliers	138945	8530 (1.94-1.90)
RSRZ outliers	127900	7793 (1.94-1.90)

The table below summarises the geometric issues observed across the polymeric chains and their fit to the electron density. The red, orange, yellow and green segments of the lower bar indicate the fraction of residues that contain outliers for ≥ 3 , 2, 1 and 0 types of geometric quality criteria respectively. A grey segment represents the fraction of residues that are not modelled. The numeric value for each fraction is indicated below the corresponding segment, with a dot representing fractions $\leq 5\%$. The upper red bar (where present) indicates the fraction of residues that have poor fit to the electron density. The numeric value is given above the bar.

Mol	Chain	Length	Quality of chain
1	B	622	

2 Entry composition [i](#)

There are 4 unique types of molecules in this entry. The entry contains 5528 atoms, of which 0 are hydrogens and 0 are deuteriums.

In the tables below, the ZeroOcc column contains the number of atoms modelled with zero occupancy, the AltConf column contains the number of residues with at least one atom in alternate conformation and the Trace column contains the number of residues modelled with at most 2 atoms.

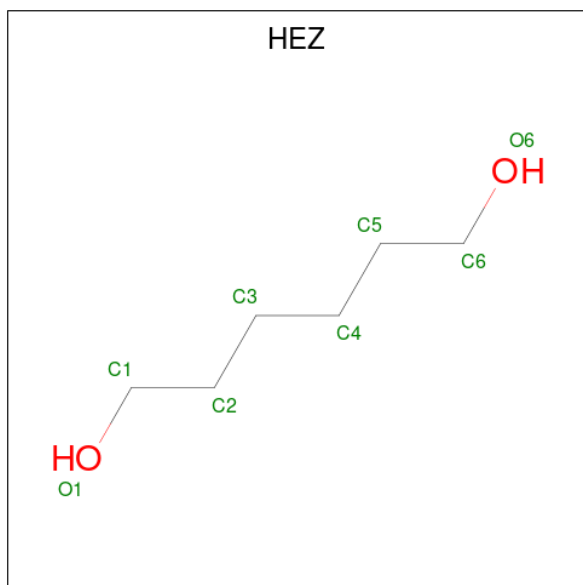
- Molecule 1 is a protein called Putative uncharacterized protein PH0594.

Mol	Chain	Residues	Atoms					ZeroOcc	AltConf	Trace
			Total	C	N	O	S			
1	B	606	5082	3315	821	932	14	0	20	0

- Molecule 2 is MAGNESIUM ION (three-letter code: MG) (formula: Mg).

Mol	Chain	Residues	Atoms		ZeroOcc	AltConf
2	B	3	Total	Mg	0	0
			3	3		

- Molecule 3 is HEXANE-1,6-DIOL (three-letter code: HEZ) (formula: C₆H₁₄O₂).



Mol	Chain	Residues	Atoms			ZeroOcc	AltConf
3	B	1	Total	C	O	0	0
			8	6	2		
3	B	1	Total	C	O	0	0
			8	6	2		

Continued on next page...

Continued from previous page...

Mol	Chain	Residues	Atoms			ZeroOcc	AltConf
3	B	1	Total	C	O	0	0
			8	6	2		
3	B	1	Total	C	O	0	0
			8	6	2		
3	B	1	Total	C	O	0	0
			8	6	2		
3	B	1	Total	C	O	0	0
			8	6	2		

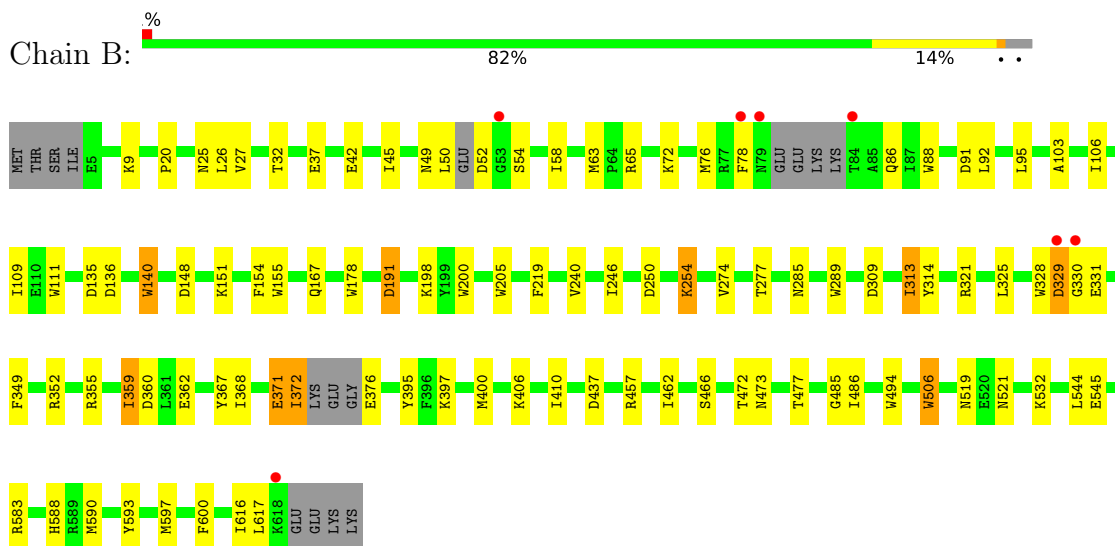
- Molecule 4 is water.

Mol	Chain	Residues	Atoms		ZeroOcc	AltConf
4	B	395	Total	O	0	1
			395	395		

3 Residue-property plots [i](#)

These plots are drawn for all protein, RNA, DNA and oligosaccharide chains in the entry. The first graphic for a chain summarises the proportions of the various outlier classes displayed in the second graphic. The second graphic shows the sequence view annotated by issues in geometry and electron density. Residues are color-coded according to the number of geometric quality criteria for which they contain at least one outlier: green = 0, yellow = 1, orange = 2 and red = 3 or more. A red dot above a residue indicates a poor fit to the electron density ($RSRZ > 2$). Stretches of 2 or more consecutive residues without any outlier are shown as a green connector. Residues present in the sample, but not in the model, are shown in grey.

- Molecule 1: Putative uncharacterized protein PH0594



4 Data and refinement statistics

Property	Value	Source
Space group	H 3 2	Depositor
Cell constants a, b, c, α , β , γ	183.00Å 183.00Å 144.63Å 90.00° 90.00° 120.00°	Depositor
Resolution (Å)	19.78 – 1.91 19.78 – 1.91	Depositor EDS
% Data completeness (in resolution range)	95.2 (19.78-1.91) 95.3 (19.78-1.91)	Depositor EDS
R_{merge}	0.16	Depositor
R_{sym}	(Not available)	Depositor
$\langle I/\sigma(I) \rangle$ ¹	1.45 (at 1.92Å)	Xtrriage
Refinement program	REFMAC 5.6.0117	Depositor
R, R_{free}	0.172 , 0.210 0.175 , 0.211	Depositor DCC
R_{free} test set	3425 reflections (5.02%)	wwPDB-VP
Wilson B-factor (Å ²)	16.0	Xtrriage
Anisotropy	0.066	Xtrriage
Bulk solvent k_{sol} (e/Å ³), B_{sol} (Å ²)	0.36 , 60.8	EDS
L-test for twinning ²	$\langle L \rangle = 0.48$, $\langle L^2 \rangle = 0.31$	Xtrriage
Estimated twinning fraction	No twinning to report.	Xtrriage
F_o, F_c correlation	0.95	EDS
Total number of atoms	5528	wwPDB-VP
Average B, all atoms (Å ²)	21.0	wwPDB-VP

Xtrriage's analysis on translational NCS is as follows: *The largest off-origin peak in the Patterson function is 2.88% of the height of the origin peak. No significant pseudotranslation is detected.*

¹Intensities estimated from amplitudes.

²Theoretical values of $\langle |L| \rangle$, $\langle L^2 \rangle$ for acentric reflections are 0.5, 0.333 respectively for untwinned datasets, and 0.375, 0.2 for perfectly twinned datasets.

5 Model quality i

5.1 Standard geometry i

Bond lengths and bond angles in the following residue types are not validated in this section: MG, HEZ

The Z score for a bond length (or angle) is the number of standard deviations the observed value is removed from the expected value. A bond length (or angle) with $|Z| > 5$ is considered an outlier worth inspection. RMSZ is the root-mean-square of all Z scores of the bond lengths (or angles).

Mol	Chain	Bond lengths		Bond angles	
		RMSZ	# Z >5	RMSZ	# Z >5
1	B	1.00	10/5273 (0.2%)	0.98	10/7114 (0.1%)

Chiral center outliers are detected by calculating the chiral volume of a chiral center and verifying if the center is modelled as a planar moiety or with the opposite hand. A planarity outlier is detected by checking planarity of atoms in a peptide group, atoms in a mainchain group or atoms of a sidechain that are expected to be planar.

Mol	Chain	#Chirality outliers	#Planarity outliers
1	B	1	2

All (10) bond length outliers are listed below:

Mol	Chain	Res	Type	Atoms	Z	Observed(Å)	Ideal(Å)
1	B	289	TRP	CD2-CE2	6.43	1.49	1.41
1	B	111	TRP	CD2-CE2	6.38	1.49	1.41
1	B	506	TRP	CD2-CE2	6.35	1.49	1.41
1	B	200	TRP	CD2-CE2	6.12	1.48	1.41
1	B	140	TRP	CD2-CE2	5.83	1.48	1.41
1	B	205	TRP	CD2-CE2	5.57	1.48	1.41
1	B	178	TRP	CD2-CE2	5.44	1.47	1.41
1	B	494	TRP	CD2-CE2	5.36	1.47	1.41
1	B	545	GLU	CD-OE2	-5.32	1.19	1.25
1	B	155	TRP	CD2-CE2	5.06	1.47	1.41

All (10) bond angle outliers are listed below:

Mol	Chain	Res	Type	Atoms	Z	Observed(°)	Ideal(°)
1	B	437	ASP	CB-CG-OD1	6.81	124.43	118.30
1	B	372	ILE	N-CA-C	6.77	129.27	111.00
1	B	371	GLU	C-N-CA	6.56	138.10	121.70

Continued on next page...

Continued from previous page...

Mol	Chain	Res	Type	Atoms	Z	Observed(°)	Ideal(°)
1	B	136	ASP	CB-CG-OD1	5.92	123.63	118.30
1	B	135	ASP	CB-CG-OD2	5.62	123.36	118.30
1	B	65	ARG	NE-CZ-NH1	5.39	122.99	120.30
1	B	148	ASP	CB-CG-OD2	-5.27	113.56	118.30
1	B	371	GLU	N-CA-C	-5.07	97.32	111.00
1	B	330	GLY	N-CA-C	5.03	125.68	113.10
1	B	191	ASP	CB-CG-OD1	5.03	122.82	118.30

All (1) chirality outliers are listed below:

Mol	Chain	Res	Type	Atom
1	B	372	ILE	CA

All (2) planarity outliers are listed below:

Mol	Chain	Res	Type	Group
1	B	329	ASP	Peptide
1	B	371	GLU	Peptide

5.2 Too-close contacts [i](#)

In the following table, the Non-H and H(model) columns list the number of non-hydrogen atoms and hydrogen atoms in the chain respectively. The H(added) column lists the number of hydrogen atoms added and optimized by MolProbity. The Clashes column lists the number of clashes within the asymmetric unit, whereas Symm-Clashes lists symmetry-related clashes.

Mol	Chain	Non-H	H(model)	H(added)	Clashes	Symm-Clashes
1	B	5082	0	4903	66	0
2	B	3	0	0	0	0
3	B	48	0	84	2	0
4	B	395	0	0	10	0
All	All	5528	0	4987	66	0

The all-atom clashscore is defined as the number of clashes found per 1000 atoms (including hydrogen atoms). The all-atom clashscore for this structure is 7.

All (66) close contacts within the same asymmetric unit are listed below, sorted by their clash magnitude.

Atom-1	Atom-2	Interatomic distance (Å)	Clash overlap (Å)
1:B:191:ASP:OD1	4:B:1111:HOH:O	1.89	0.90

Continued on next page...

Continued from previous page...

Atom-1	Atom-2	Interatomic distance (Å)	Clash overlap (Å)
1:B:49:ASN:HD22	1:B:52:ASP:HB2	1.35	0.89
1:B:397[A]:LYS:HD2	1:B:400:MET:SD	2.17	0.84
1:B:49:ASN:ND2	1:B:52:ASP:HB2	1.93	0.83
1:B:49:ASN:HB3	1:B:52:ASP:HB3	1.63	0.79
1:B:25:ASN:O	1:B:49:ASN:O	2.02	0.77
1:B:457[B]:ARG:HG3	4:B:932:HOH:O	1.86	0.74
1:B:103:ALA:HB1	1:B:106:ILE:HG12	1.70	0.74
1:B:103:ALA:HB1	1:B:106:ILE:CG1	2.20	0.71
1:B:397[B]:LYS:HB3	4:B:942:HOH:O	1.93	0.68
1:B:329:ASP:HB2	1:B:331:GLU:H	1.59	0.68
1:B:321:ARG:HB2	3:B:704:HEZ:H51	1.78	0.65
1:B:9:LYS:HE2	1:B:590[B]:MET:CE	2.28	0.63
1:B:395:TYR:O	1:B:397[B]:LYS:HE3	1.98	0.63
1:B:27:VAL:HG13	1:B:313:ILE:HD13	1.81	0.62
1:B:76:MET:HG2	1:B:78:PHE:CZ	2.35	0.61
1:B:397[A]:LYS:HB3	4:B:942:HOH:O	2.01	0.61
1:B:519:ASN:OD1	1:B:521:ASN:HB2	2.03	0.59
1:B:27:VAL:HG11	1:B:325:LEU:HD21	1.86	0.57
1:B:49:ASN:HD22	1:B:52:ASP:CB	2.12	0.57
1:B:352[B]:ARG:NE	4:B:987:HOH:O	2.30	0.56
1:B:457[B]:ARG:HH11	1:B:457[B]:ARG:HG2	1.70	0.56
1:B:49:ASN:O	1:B:50:LEU:HB2	2.07	0.55
1:B:86:GLN:HG3	1:B:88:TRP:NE1	2.22	0.54
1:B:86:GLN:HG3	1:B:88:TRP:HE1	1.73	0.53
1:B:457[B]:ARG:HG2	1:B:457[B]:ARG:NH1	2.24	0.52
1:B:20:PRO:HB2	1:B:313:ILE:HD12	1.91	0.52
1:B:349:PHE:HB3	1:B:368:ILE:HG23	1.93	0.51
1:B:103:ALA:HB1	1:B:106:ILE:HG13	1.91	0.51
1:B:355:ARG:HD3	1:B:362:GLU:OE1	2.10	0.50
1:B:406:LYS:HE2	1:B:597[A]:MET:HB2	1.94	0.50
1:B:616:ILE:HG22	1:B:617:LEU:HD12	1.94	0.50
1:B:462:ILE:O	1:B:485:GLY:HA2	2.12	0.49
1:B:246:ILE:HD12	1:B:274:VAL:HG11	1.95	0.49
1:B:376:GLU:N	4:B:1156:HOH:O	2.45	0.49
1:B:63:MET:HE2	1:B:109:ILE:HG12	1.93	0.49
1:B:49:ASN:HB3	1:B:52:ASP:CB	2.40	0.48
1:B:359:ILE:HG22	1:B:360:ASP:N	2.28	0.48
1:B:32:THR:HA	1:B:42:GLU:O	2.13	0.48
1:B:367:TYR:HA	1:B:410:ILE:O	2.13	0.48
1:B:27:VAL:HG21	1:B:50:LEU:HD21	1.96	0.46
1:B:593:TYR:O	1:B:597[A]:MET:HG2	2.16	0.46

Continued on next page...

Continued from previous page...

Atom-1	Atom-2	Interatomic distance (Å)	Clash overlap (Å)
1:B:321:ARG:CB	3:B:704:HEZ:H51	2.46	0.45
1:B:72:LYS:HE2	4:B:918:HOH:O	2.17	0.44
1:B:37:GLU:H	1:B:37:GLU:CD	2.20	0.44
1:B:309:ASP:HB3	4:B:841:HOH:O	2.17	0.44
1:B:277:THR:HA	1:B:285:ASN:O	2.18	0.44
1:B:49:ASN:O	1:B:50:LEU:CB	2.66	0.44
1:B:583[A]:ARG:NE	4:B:970:HOH:O	2.50	0.44
1:B:9:LYS:HE2	1:B:590[B]:MET:HE3	1.99	0.43
1:B:250:ASP:OD1	1:B:250:ASP:C	2.56	0.43
1:B:473:ASN:O	1:B:477:THR:HG23	2.18	0.43
1:B:486:ILE:HD12	1:B:600:PHE:CE1	2.54	0.43
1:B:45:ILE:HB	1:B:58:ILE:HB	2.01	0.43
1:B:462:ILE:HG23	1:B:472:THR:HG23	2.01	0.42
1:B:26:LEU:CD1	1:B:92:LEU:HD13	2.48	0.42
1:B:240:VAL:HG21	1:B:506:TRP:HZ3	1.84	0.42
1:B:352[B]:ARG:HH11	1:B:352[B]:ARG:HG2	1.84	0.42
1:B:254:LYS:HB2	1:B:254:LYS:HE2	1.72	0.42
1:B:314:TYR:HE1	1:B:328:TRP:HB2	1.83	0.42
1:B:544:LEU:HD23	1:B:544:LEU:HA	1.84	0.41
1:B:352[B]:ARG:HD2	4:B:987:HOH:O	2.21	0.40
1:B:154:PHE:O	1:B:167:GLN:HA	2.22	0.40

There are no symmetry-related clashes.

5.3 Torsion angles [i](#)

5.3.1 Protein backbone [i](#)

In the following table, the Percentiles column shows the percent Ramachandran outliers of the chain as a percentile score with respect to all X-ray entries followed by that with respect to entries of similar resolution.

The Analysed column shows the number of residues for which the backbone conformation was analysed, and the total number of residues.

Mol	Chain	Analysed	Favoured	Allowed	Outliers	Percentiles
1	B	618/622 (99%)	589 (95%)	27 (4%)	2 (0%)	41 31

All (2) Ramachandran outliers are listed below:

Mol	Chain	Res	Type
1	B	359	ILE
1	B	466	SER

5.3.2 Protein sidechains [i](#)

In the following table, the Percentiles column shows the percent sidechain outliers of the chain as a percentile score with respect to all X-ray entries followed by that with respect to entries of similar resolution.

The Analysed column shows the number of residues for which the sidechain conformation was analysed, and the total number of residues.

Mol	Chain	Analysed	Rotameric	Outliers	Percentiles
1	B	522/549 (95%)	511 (98%)	11 (2%)	53 46

All (11) residues with a non-rotameric sidechain are listed below:

Mol	Chain	Res	Type
1	B	54	SER
1	B	91[A]	ASP
1	B	91[B]	ASP
1	B	140	TRP
1	B	151	LYS
1	B	198	LYS
1	B	219	PHE
1	B	254	LYS
1	B	313	ILE
1	B	372	ILE
1	B	588	HIS

Sometimes sidechains can be flipped to improve hydrogen bonding and reduce clashes. All (2) such sidechains are listed below:

Mol	Chain	Res	Type
1	B	49	ASN
1	B	79	ASN

5.3.3 RNA [i](#)

There are no RNA molecules in this entry.

5.4 Non-standard residues in protein, DNA, RNA chains [i](#)

There are no non-standard protein/DNA/RNA residues in this entry.

5.5 Carbohydrates [i](#)

There are no monosaccharides in this entry.

5.6 Ligand geometry [i](#)

Of 9 ligands modelled in this entry, 3 are monoatomic - leaving 6 for Mogul analysis.

In the following table, the Counts columns list the number of bonds (or angles) for which Mogul statistics could be retrieved, the number of bonds (or angles) that are observed in the model and the number of bonds (or angles) that are defined in the Chemical Component Dictionary. The Link column lists molecule types, if any, to which the group is linked. The Z score for a bond length (or angle) is the number of standard deviations the observed value is removed from the expected value. A bond length (or angle) with $|Z| > 2$ is considered an outlier worth inspection. RMSZ is the root-mean-square of all Z scores of the bond lengths (or angles).

Mol	Type	Chain	Res	Link	Bond lengths			Bond angles		
					Counts	RMSZ	# Z > 2	Counts	RMSZ	# Z > 2
3	HEZ	B	704	-	7,7,7	0.39	0	6,6,6	0.95	0
3	HEZ	B	705	-	7,7,7	0.50	0	6,6,6	1.07	1 (16%)
3	HEZ	B	708	-	7,7,7	0.29	0	6,6,6	1.13	0
3	HEZ	B	707	-	7,7,7	0.25	0	6,6,6	0.81	0
3	HEZ	B	709	-	7,7,7	0.44	0	6,6,6	0.99	0
3	HEZ	B	706	-	7,7,7	0.55	0	6,6,6	0.59	0

In the following table, the Chirals column lists the number of chiral outliers, the number of chiral centers analysed, the number of these observed in the model and the number defined in the Chemical Component Dictionary. Similar counts are reported in the Torsion and Rings columns. '-' means no outliers of that kind were identified.

Mol	Type	Chain	Res	Link	Chirals	Torsions	Rings
3	HEZ	B	704	-	-	2/5/5/5	-
3	HEZ	B	705	-	-	0/5/5/5	-
3	HEZ	B	708	-	-	4/5/5/5	-
3	HEZ	B	707	-	-	3/5/5/5	-
3	HEZ	B	709	-	-	3/5/5/5	-
3	HEZ	B	706	-	-	4/5/5/5	-

There are no bond length outliers.

All (1) bond angle outliers are listed below:

Mol	Chain	Res	Type	Atoms	Z	Observed(°)	Ideal(°)
3	B	705	HEZ	C5-C4-C3	-2.11	103.73	114.42

There are no chirality outliers.

All (16) torsion outliers are listed below:

Mol	Chain	Res	Type	Atoms
3	B	707	HEZ	C3-C4-C5-C6
3	B	709	HEZ	C1-C2-C3-C4
3	B	704	HEZ	C1-C2-C3-C4
3	B	708	HEZ	C3-C4-C5-C6
3	B	706	HEZ	C2-C3-C4-C5
3	B	706	HEZ	O1-C1-C2-C3
3	B	704	HEZ	O1-C1-C2-C3
3	B	708	HEZ	C1-C2-C3-C4
3	B	708	HEZ	C4-C5-C6-O6
3	B	707	HEZ	O1-C1-C2-C3
3	B	706	HEZ	C4-C5-C6-O6
3	B	709	HEZ	C4-C5-C6-O6
3	B	707	HEZ	C1-C2-C3-C4
3	B	708	HEZ	C2-C3-C4-C5
3	B	706	HEZ	C3-C4-C5-C6
3	B	709	HEZ	O1-C1-C2-C3

There are no ring outliers.

1 monomer is involved in 2 short contacts:

Mol	Chain	Res	Type	Clashes	Symm-Clashes
3	B	704	HEZ	2	0

5.7 Other polymers [i](#)

There are no such residues in this entry.

5.8 Polymer linkage issues [i](#)

There are no chain breaks in this entry.

6 Fit of model and data [i](#)

6.1 Protein, DNA and RNA chains [i](#)

In the following table, the column labelled '#RSRZ > 2' contains the number (and percentage) of RSRZ outliers, followed by percent RSRZ outliers for the chain as percentile scores relative to all X-ray entries and entries of similar resolution. The OWAB column contains the minimum, median, 95th percentile and maximum values of the occupancy-weighted average B-factor per residue. The column labelled 'Q < 0.9' lists the number of (and percentage) of residues with an average occupancy less than 0.9.

Mol	Chain	Analysed	<RSRZ>	#RSRZ>2	OWAB(Å ²)	Q<0.9
1	B	606/622 (97%)	-0.65	7 (1%) 79 81	12, 19, 37, 69	0

All (7) RSRZ outliers are listed below:

Mol	Chain	Res	Type	RSRZ
1	B	79	ASN	3.3
1	B	84	THR	2.8
1	B	53	GLY	2.5
1	B	618	LYS	2.5
1	B	78	PHE	2.4
1	B	329	ASP	2.4
1	B	330	GLY	2.3

6.2 Non-standard residues in protein, DNA, RNA chains [i](#)

There are no non-standard protein/DNA/RNA residues in this entry.

6.3 Carbohydrates [i](#)

There are no monosaccharides in this entry.

6.4 Ligands [i](#)

In the following table, the Atoms column lists the number of modelled atoms in the group and the number defined in the chemical component dictionary. The B-factors column lists the minimum, median, 95th percentile and maximum values of B factors of atoms in the group. The column labelled 'Q < 0.9' lists the number of atoms with occupancy less than 0.9.

Mol	Type	Chain	Res	Atoms	RSCC	RSR	B-factors(Å ²)	Q<0.9
3	HEZ	B	706	8/8	0.80	0.16	39,43,49,52	0

Continued on next page...

Continued from previous page...

Mol	Type	Chain	Res	Atoms	RSCC	RSR	B-factors(\AA^2)	Q<0.9
3	HEZ	B	707	8/8	0.85	0.19	34,45,47,48	0
3	HEZ	B	704	8/8	0.88	0.12	27,35,54,54	0
3	HEZ	B	708	8/8	0.92	0.15	35,41,51,61	0
3	HEZ	B	709	8/8	0.93	0.13	26,31,36,44	0
3	HEZ	B	705	8/8	0.94	0.11	23,33,40,43	0
2	MG	B	701	1/1	0.98	0.05	31,31,31,31	0
2	MG	B	702	1/1	0.99	0.09	28,28,28,28	0
2	MG	B	703	1/1	0.99	0.02	16,16,16,16	0

6.5 Other polymers [i](#)

There are no such residues in this entry.