



wwPDB X-ray Structure Validation Summary Report ⓘ

Sep 7, 2023 – 07:42 AM EDT

PDB ID : 4GT2
Title : Crystal structure of DyP-type peroxidase (SCO3963) from *Streptomyces coelicolor*
Authors : Lukk, T.; Hetta, A.M.A.; Jones, A.; Solbiati, J.; Majumdar, S.; Cronan, J.E.; Gerlt, J.A.; Nair, S.K.
Deposited on : 2012-08-28
Resolution : 1.80 Å(reported)

This is a wwPDB X-ray Structure Validation Summary Report for a publicly released PDB entry.

We welcome your comments at validation@mail.wwpdb.org

A user guide is available at

<https://www.wwpdb.org/validation/2017/XrayValidationReportHelp>

with specific help available everywhere you see the ⓘ symbol.

The types of validation reports are described at

<http://www.wwpdb.org/validation/2017/FAQs#types>.

The following versions of software and data (see [references ⓘ](#)) were used in the production of this report:

MolProbity : 4.02b-467
Mogul : 1.8.5 (274361), CSD as541be (2020)
Xtriage (Phenix) : 1.13
EDS : 2.35
buster-report : 1.1.7 (2018)
Percentile statistics : 20191225.v01 (using entries in the PDB archive December 25th 2019)
Refmac : 5.8.0158
CCP4 : 7.0.044 (Gargrove)
Ideal geometry (proteins) : Engh & Huber (2001)
Ideal geometry (DNA, RNA) : Parkinson et al. (1996)
Validation Pipeline (wwPDB-VP) : 2.35

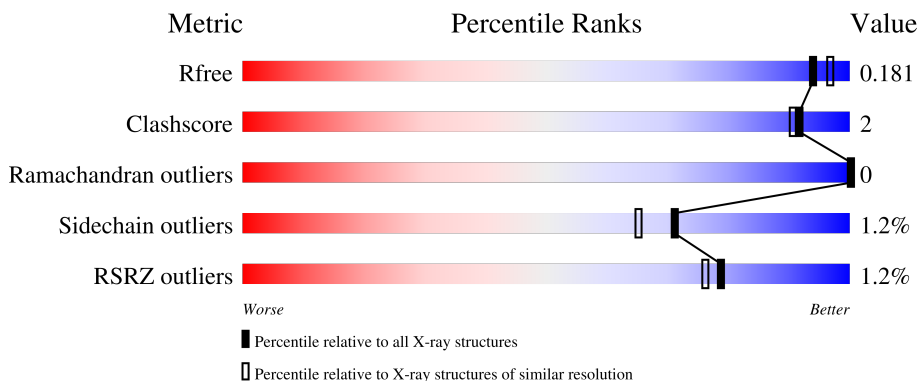
1 Overall quality at a glance

The following experimental techniques were used to determine the structure:

X-RAY DIFFRACTION

The reported resolution of this entry is 1.80 Å.

Percentile scores (ranging between 0-100) for global validation metrics of the entry are shown in the following graphic. The table shows the number of entries on which the scores are based.



Metric	Whole archive (#Entries)	Similar resolution (#Entries, resolution range(Å))
R_{free}	130704	5950 (1.80-1.80)
Clashscore	141614	6793 (1.80-1.80)
Ramachandran outliers	138981	6697 (1.80-1.80)
Sidechain outliers	138945	6696 (1.80-1.80)
RSRZ outliers	127900	5850 (1.80-1.80)

The table below summarises the geometric issues observed across the polymeric chains and their fit to the electron density. The red, orange, yellow and green segments of the lower bar indicate the fraction of residues that contain outliers for ≥ 3 , 2, 1 and 0 types of geometric quality criteria respectively. A grey segment represents the fraction of residues that are not modelled. The numeric value for each fraction is indicated below the corresponding segment, with a dot representing fractions $\leq 5\%$. The upper red bar (where present) indicates the fraction of residues that have poor fit to the electron density. The numeric value is given above the bar.

Mol	Chain	Length	Quality of chain
1	A	465	 77% 20%
1	B	465	 74% 5% 21%
1	E	465	 75% 20%
1	G	465	 77% 21%

2 Entry composition i

There are 6 unique types of molecules in this entry. The entry contains 13783 atoms, of which 0 are hydrogens and 0 are deuteriums.

In the tables below, the ZeroOcc column contains the number of atoms modelled with zero occupancy, the AltConf column contains the number of residues with at least one atom in alternate conformation and the Trace column contains the number of residues modelled with at most 2 atoms.

- Molecule 1 is a protein called Putative uncharacterized protein SCO3963.

Mol	Chain	Residues	Atoms					ZeroOcc	AltConf	Trace
			Total	C	N	O	S			
1	B	369	2822	1746	532	532	12	0	2	0
1	A	371	2855	1763	542	539	11	0	4	0
1	E	370	2822	1746	535	530	11	0	1	0
1	G	369	2823	1746	532	534	11	0	2	0

There are 80 discrepancies between the modelled and reference sequences:

Chain	Residue	Modelled	Actual	Comment	Reference
B	-19	MET	-	expression tag	UNP Q9ZBW9
B	-18	GLY	-	expression tag	UNP Q9ZBW9
B	-17	SER	-	expression tag	UNP Q9ZBW9
B	-16	SER	-	expression tag	UNP Q9ZBW9
B	-15	HIS	-	expression tag	UNP Q9ZBW9
B	-14	HIS	-	expression tag	UNP Q9ZBW9
B	-13	HIS	-	expression tag	UNP Q9ZBW9
B	-12	HIS	-	expression tag	UNP Q9ZBW9
B	-11	HIS	-	expression tag	UNP Q9ZBW9
B	-10	HIS	-	expression tag	UNP Q9ZBW9
B	-9	SER	-	expression tag	UNP Q9ZBW9
B	-8	SER	-	expression tag	UNP Q9ZBW9
B	-7	GLY	-	expression tag	UNP Q9ZBW9
B	-6	LEU	-	expression tag	UNP Q9ZBW9
B	-5	VAL	-	expression tag	UNP Q9ZBW9
B	-4	PRO	-	expression tag	UNP Q9ZBW9
B	-3	ARG	-	expression tag	UNP Q9ZBW9
B	-2	GLY	-	expression tag	UNP Q9ZBW9
B	-1	SER	-	expression tag	UNP Q9ZBW9
B	0	HIS	-	expression tag	UNP Q9ZBW9
A	-19	MET	-	expression tag	UNP Q9ZBW9

Continued on next page...

Continued from previous page...

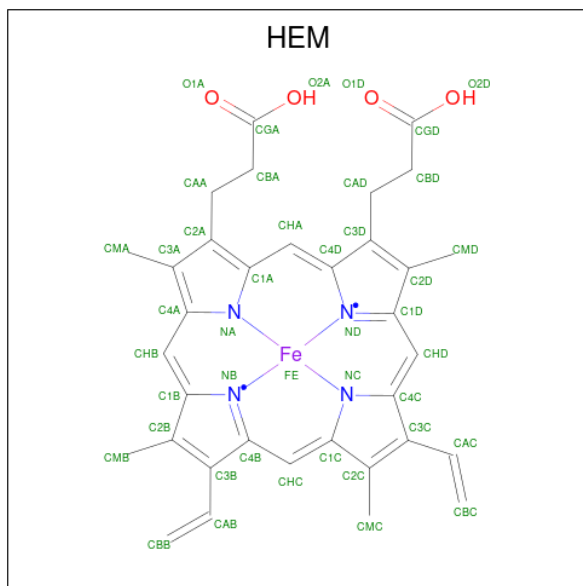
Chain	Residue	Modelled	Actual	Comment	Reference
A	-18	GLY	-	expression tag	UNP Q9ZBW9
A	-17	SER	-	expression tag	UNP Q9ZBW9
A	-16	SER	-	expression tag	UNP Q9ZBW9
A	-15	HIS	-	expression tag	UNP Q9ZBW9
A	-14	HIS	-	expression tag	UNP Q9ZBW9
A	-13	HIS	-	expression tag	UNP Q9ZBW9
A	-12	HIS	-	expression tag	UNP Q9ZBW9
A	-11	HIS	-	expression tag	UNP Q9ZBW9
A	-10	HIS	-	expression tag	UNP Q9ZBW9
A	-9	SER	-	expression tag	UNP Q9ZBW9
A	-8	SER	-	expression tag	UNP Q9ZBW9
A	-7	GLY	-	expression tag	UNP Q9ZBW9
A	-6	LEU	-	expression tag	UNP Q9ZBW9
A	-5	VAL	-	expression tag	UNP Q9ZBW9
A	-4	PRO	-	expression tag	UNP Q9ZBW9
A	-3	ARG	-	expression tag	UNP Q9ZBW9
A	-2	GLY	-	expression tag	UNP Q9ZBW9
A	-1	SER	-	expression tag	UNP Q9ZBW9
A	0	HIS	-	expression tag	UNP Q9ZBW9
E	-19	MET	-	expression tag	UNP Q9ZBW9
E	-18	GLY	-	expression tag	UNP Q9ZBW9
E	-17	SER	-	expression tag	UNP Q9ZBW9
E	-16	SER	-	expression tag	UNP Q9ZBW9
E	-15	HIS	-	expression tag	UNP Q9ZBW9
E	-14	HIS	-	expression tag	UNP Q9ZBW9
E	-13	HIS	-	expression tag	UNP Q9ZBW9
E	-12	HIS	-	expression tag	UNP Q9ZBW9
E	-11	HIS	-	expression tag	UNP Q9ZBW9
E	-10	HIS	-	expression tag	UNP Q9ZBW9
E	-9	SER	-	expression tag	UNP Q9ZBW9
E	-8	SER	-	expression tag	UNP Q9ZBW9
E	-7	GLY	-	expression tag	UNP Q9ZBW9
E	-6	LEU	-	expression tag	UNP Q9ZBW9
E	-5	VAL	-	expression tag	UNP Q9ZBW9
E	-4	PRO	-	expression tag	UNP Q9ZBW9
E	-3	ARG	-	expression tag	UNP Q9ZBW9
E	-2	GLY	-	expression tag	UNP Q9ZBW9
E	-1	SER	-	expression tag	UNP Q9ZBW9
E	0	HIS	-	expression tag	UNP Q9ZBW9
G	-19	MET	-	expression tag	UNP Q9ZBW9
G	-18	GLY	-	expression tag	UNP Q9ZBW9
G	-17	SER	-	expression tag	UNP Q9ZBW9

Continued on next page...

Continued from previous page...

Chain	Residue	Modelled	Actual	Comment	Reference
G	-16	SER	-	expression tag	UNP Q9ZBW9
G	-15	HIS	-	expression tag	UNP Q9ZBW9
G	-14	HIS	-	expression tag	UNP Q9ZBW9
G	-13	HIS	-	expression tag	UNP Q9ZBW9
G	-12	HIS	-	expression tag	UNP Q9ZBW9
G	-11	HIS	-	expression tag	UNP Q9ZBW9
G	-10	HIS	-	expression tag	UNP Q9ZBW9
G	-9	SER	-	expression tag	UNP Q9ZBW9
G	-8	SER	-	expression tag	UNP Q9ZBW9
G	-7	GLY	-	expression tag	UNP Q9ZBW9
G	-6	LEU	-	expression tag	UNP Q9ZBW9
G	-5	VAL	-	expression tag	UNP Q9ZBW9
G	-4	PRO	-	expression tag	UNP Q9ZBW9
G	-3	ARG	-	expression tag	UNP Q9ZBW9
G	-2	GLY	-	expression tag	UNP Q9ZBW9
G	-1	SER	-	expression tag	UNP Q9ZBW9
G	0	HIS	-	expression tag	UNP Q9ZBW9

- Molecule 2 is PROTOPORPHYRIN IX CONTAINING FE (three-letter code: HEM) (formula: $C_{34}H_{32}FeN_4O_4$).



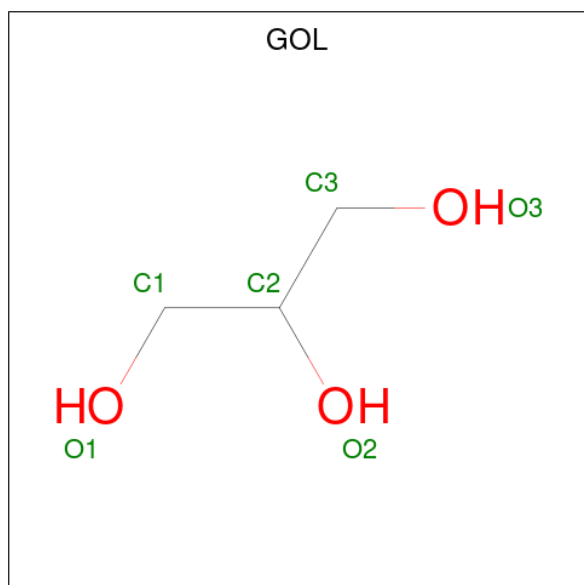
Mol	Chain	Residues	Atoms				ZeroOcc	AltConf	
			Total	C	Fe	N			O
2	B	1	43	34	1	4	4	0	0
2	A	1	43	34	1	4	4	0	0

Continued on next page...

Continued from previous page...

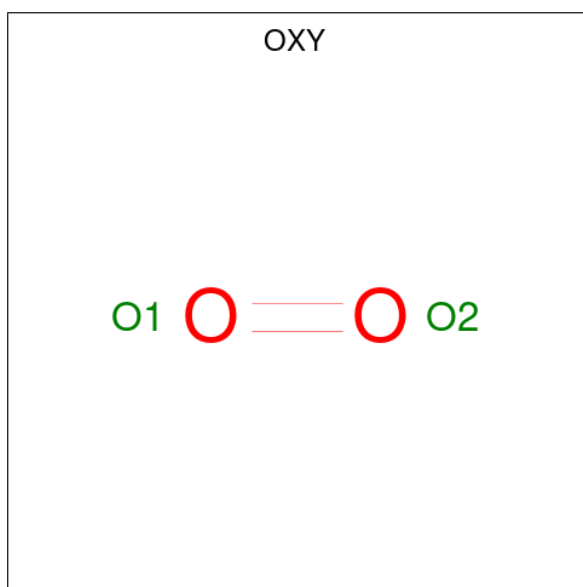
Mol	Chain	Residues	Atoms				ZeroOcc	AltConf	
2	E	1	Total	C	Fe	N	O	0	0
			43	34	1	4	4		
2	G	1	Total	C	Fe	N	O	0	0
			43	34	1	4	4		

- Molecule 3 is GLYCEROL (three-letter code: GOL) (formula: C₃H₈O₃).



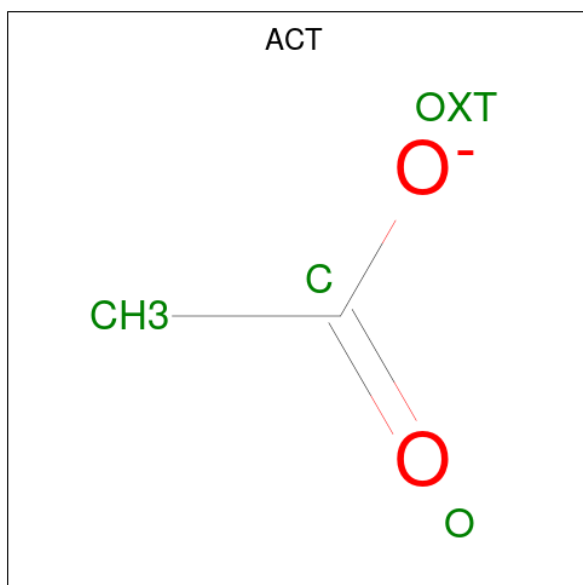
Mol	Chain	Residues	Atoms			ZeroOcc	AltConf
3	B	1	Total	C	O	0	0
			6	3	3		
3	B	1	Total	C	O	0	0
			6	3	3		
3	A	1	Total	C	O	0	0
			6	3	3		
3	A	1	Total	C	O	0	0
			6	3	3		
3	E	1	Total	C	O	0	0
			6	3	3		
3	E	1	Total	C	O	0	0
			6	3	3		
3	E	1	Total	C	O	0	0
			6	3	3		
3	G	1	Total	C	O	0	0
			6	3	3		

- Molecule 4 is OXYGEN MOLECULE (three-letter code: OXY) (formula: O₂).



Mol	Chain	Residues	Atoms	ZeroOcc	AltConf
4	B	1	Total O 2 2	0	0
4	A	1	Total O 2 2	0	0
4	E	1	Total O 2 2	0	0
4	G	1	Total O 2 2	0	0

- Molecule 5 is ACETATE ION (three-letter code: ACT) (formula: C₂H₃O₂).



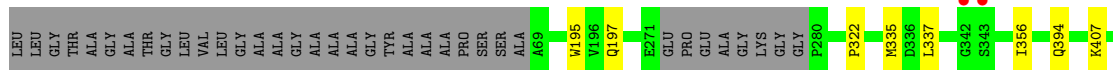
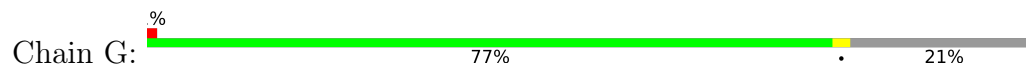
Mol	Chain	Residues	Atoms			ZeroOcc	AltConf
5	B	1	Total	C	O	0	0
			4	2	2		

- Molecule 6 is water.

Mol	Chain	Residues	Atoms		ZeroOcc	AltConf
6	B	570	Total	O	0	0
			570	570		
6	A	567	Total	O	0	0
			567	567		
6	E	527	Total	O	0	0
			527	527		
6	G	565	Total	O	0	0
			565	565		



● Molecule 1: Putative uncharacterized protein SCO3963



4 Data and refinement statistics i

Property	Value	Source
Space group	P 1 21 1	Depositor
Cell constants a, b, c, α , β , γ	53.87Å 203.20Å 76.32Å 90.00° 110.73° 90.00°	Depositor
Resolution (Å)	29.20 – 1.80 29.20 – 1.80	Depositor EDS
% Data completeness (in resolution range)	99.7 (29.20-1.80) 99.7 (29.20-1.80)	Depositor EDS
R_{merge}	0.09	Depositor
R_{sym}	0.09	Depositor
$\langle I/\sigma(I) \rangle$ ¹	2.54 (at 1.79Å)	Xtriage
Refinement program	PHENIX 1.8_1066	Depositor
R, R_{free}	0.147 , 0.185 0.145 , 0.181	Depositor DCC
R_{free} test set	7154 reflections (5.06%)	wwPDB-VP
Wilson B-factor (Å ²)	11.8	Xtriage
Anisotropy	0.047	Xtriage
Bulk solvent k_{sol} (e/Å ³), B_{sol} (Å ²)	0.37 , 59.3	EDS
L-test for twinning ²	$\langle L \rangle = 0.50$, $\langle L^2 \rangle = 0.33$	Xtriage
Estimated twinning fraction	0.177 for h,-k,-h-l	Xtriage
Reported twinning fraction	0.010 for h,-k,-h-l	Depositor
Outliers	0 of 141255 reflections	Xtriage
F_o, F_c correlation	0.96	EDS
Total number of atoms	13783	wwPDB-VP
Average B, all atoms (Å ²)	15.0	wwPDB-VP

Xtriage's analysis on translational NCS is as follows: *The largest off-origin peak in the Patterson function is 6.01% of the height of the origin peak. No significant pseudotranslation is detected.*

¹Intensities estimated from amplitudes.

²Theoretical values of $\langle |L| \rangle$, $\langle L^2 \rangle$ for acentric reflections are 0.5, 0.333 respectively for untwinned datasets, and 0.375, 0.2 for perfectly twinned datasets.

5 Model quality [i](#)

5.1 Standard geometry [i](#)

Bond lengths and bond angles in the following residue types are not validated in this section: ACT, HEM, OXY, GOL

The Z score for a bond length (or angle) is the number of standard deviations the observed value is removed from the expected value. A bond length (or angle) with $|Z| > 5$ is considered an outlier worth inspection. RMSZ is the root-mean-square of all Z scores of the bond lengths (or angles).

Mol	Chain	Bond lengths		Bond angles	
		RMSZ	# Z >5	RMSZ	# Z >5
1	A	0.35	0/2917	0.55	0/3943
1	B	0.37	0/2884	0.57	1/3899 (0.0%)
1	E	0.34	0/2884	0.52	0/3899
1	G	0.36	0/2885	0.54	0/3901
All	All	0.36	0/11570	0.55	1/15642 (0.0%)

There are no bond length outliers.

All (1) bond angle outliers are listed below:

Mol	Chain	Res	Type	Atoms	Z	Observed(°)	Ideal(°)
1	B	441	ARG	NE-CZ-NH1	-9.88	115.36	120.30

There are no chirality outliers.

There are no planarity outliers.

5.2 Too-close contacts [i](#)

In the following table, the Non-H and H(model) columns list the number of non-hydrogen atoms and hydrogen atoms in the chain respectively. The H(added) column lists the number of hydrogen atoms added and optimized by MolProbity. The Clashes column lists the number of clashes within the asymmetric unit, whereas Symm-Clashes lists symmetry-related clashes.

Mol	Chain	Non-H	H(model)	H(added)	Clashes	Symm-Clashes
1	A	2855	0	2753	6	0
1	B	2822	0	2725	15	0
1	E	2822	0	2728	11	0
1	G	2823	0	2722	4	0
2	A	43	0	30	0	0
2	B	43	0	30	0	0

Continued on next page...

Continued from previous page...

Mol	Chain	Non-H	H(model)	H(added)	Clashes	Symm-Clashes
2	E	43	0	30	0	0
2	G	43	0	30	0	0
3	A	12	0	16	0	0
3	B	12	0	16	1	0
3	E	18	0	24	0	0
3	G	6	0	8	0	0
4	A	2	0	0	0	0
4	B	2	0	0	0	0
4	E	2	0	0	0	0
4	G	2	0	0	0	0
5	B	4	0	3	0	0
6	A	567	0	0	2	0
6	B	570	0	0	5	0
6	E	527	0	0	4	0
6	G	565	0	0	0	0
All	All	13783	0	11115	36	0

The all-atom clashscore is defined as the number of clashes found per 1000 atoms (including hydrogen atoms). The all-atom clashscore for this structure is 2.

The worst 5 of 36 close contacts within the same asymmetric unit are listed below, sorted by their clash magnitude.

Atom-1	Atom-2	Interatomic distance (Å)	Clash overlap (Å)
1:B:235:GLY:H	3:B:505:GOL:H31	1.37	0.89
1:A:119[A]:ARG:NH2	6:A:803:HOH:O	2.23	0.71
1:B:97:ARG:NH2	6:B:1099:HOH:O	2.27	0.66
1:E:406:ARG:NH2	6:E:866:HOH:O	2.25	0.61
1:E:265:ARG:NH2	6:E:955:HOH:O	2.35	0.59

There are no symmetry-related clashes.

5.3 Torsion angles [i](#)

5.3.1 Protein backbone [i](#)

In the following table, the Percentiles column shows the percent Ramachandran outliers of the chain as a percentile score with respect to all X-ray entries followed by that with respect to entries of similar resolution.

The Analysed column shows the number of residues for which the backbone conformation was analysed, and the total number of residues.

Mol	Chain	Analysed	Favoured	Allowed	Outliers	Percentiles	
1	A	371/465 (80%)	365 (98%)	6 (2%)	0	100	100
1	B	367/465 (79%)	360 (98%)	7 (2%)	0	100	100
1	E	367/465 (79%)	360 (98%)	7 (2%)	0	100	100
1	G	367/465 (79%)	362 (99%)	5 (1%)	0	100	100
All	All	1472/1860 (79%)	1447 (98%)	25 (2%)	0	100	100

There are no Ramachandran outliers to report.

5.3.2 Protein sidechains [i](#)

In the following table, the Percentiles column shows the percent sidechain outliers of the chain as a percentile score with respect to all X-ray entries followed by that with respect to entries of similar resolution.

The Analysed column shows the number of residues for which the sidechain conformation was analysed, and the total number of residues.

Mol	Chain	Analysed	Rotameric	Outliers	Percentiles	
1	A	286/345 (83%)	281 (98%)	5 (2%)	60	51
1	B	283/345 (82%)	280 (99%)	3 (1%)	73	68
1	E	282/345 (82%)	279 (99%)	3 (1%)	73	68
1	G	283/345 (82%)	281 (99%)	2 (1%)	84	81
All	All	1134/1380 (82%)	1121 (99%)	13 (1%)	71	68

5 of 13 residues with a non-rotameric sidechain are listed below:

Mol	Chain	Res	Type
1	A	394	GLN
1	E	327	SER
1	G	410	ARG
1	E	416	GLN
1	G	394	GLN

Sometimes sidechains can be flipped to improve hydrogen bonding and reduce clashes. All (2) such sidechains are listed below:

Mol	Chain	Res	Type
1	B	285	ASN
1	E	416	GLN

5.3.3 RNA [i](#)

There are no RNA molecules in this entry.

5.4 Non-standard residues in protein, DNA, RNA chains [i](#)

There are no non-standard protein/DNA/RNA residues in this entry.

5.5 Carbohydrates [i](#)

There are no monosaccharides in this entry.

5.6 Ligand geometry [i](#)

17 ligands are modelled in this entry.

In the following table, the Counts columns list the number of bonds (or angles) for which Mogul statistics could be retrieved, the number of bonds (or angles) that are observed in the model and the number of bonds (or angles) that are defined in the Chemical Component Dictionary. The Link column lists molecule types, if any, to which the group is linked. The Z score for a bond length (or angle) is the number of standard deviations the observed value is removed from the expected value. A bond length (or angle) with $|Z| > 2$ is considered an outlier worth inspection. RMSZ is the root-mean-square of all Z scores of the bond lengths (or angles).

Mol	Type	Chain	Res	Link	Bond lengths			Bond angles		
					Counts	RMSZ	# Z > 2	Counts	RMSZ	# Z > 2
4	OXY	A	503	2	1,1,1	0.12	0	-		
3	GOL	B	502	-	5,5,5	0.32	0	5,5,5	0.21	0
2	HEM	B	501	1	41,50,50	1.90	6 (14%)	45,82,82	1.76	8 (17%)
4	OXY	E	504	2	1,1,1	0.14	0	-		
3	GOL	A	504	-	5,5,5	0.33	0	5,5,5	0.32	0
3	GOL	E	502	-	5,5,5	0.37	0	5,5,5	0.21	0
3	GOL	B	505	-	5,5,5	0.63	0	5,5,5	0.76	0
4	OXY	B	503	-	1,1,1	0.12	0	-		
3	GOL	E	503	-	5,5,5	0.35	0	5,5,5	0.31	0
3	GOL	A	502	-	5,5,5	0.35	0	5,5,5	0.52	0
2	HEM	E	501	1,4	41,50,50	1.94	8 (19%)	45,82,82	1.69	6 (13%)
4	OXY	G	502	2	1,1,1	0.12	0	-		
5	ACT	B	504	-	3,3,3	0.71	0	3,3,3	1.22	0
2	HEM	A	501	1,4	41,50,50	1.91	7 (17%)	45,82,82	1.77	10 (22%)
3	GOL	G	503	-	5,5,5	0.39	0	5,5,5	0.24	0
3	GOL	E	505	-	5,5,5	0.49	0	5,5,5	0.48	0
2	HEM	G	501	1,4	41,50,50	2.00	8 (19%)	45,82,82	1.70	8 (17%)

In the following table, the Chirals column lists the number of chiral outliers, the number of chiral centers analysed, the number of these observed in the model and the number defined in the Chemical Component Dictionary. Similar counts are reported in the Torsion and Rings columns. '-' means no outliers of that kind were identified.

Mol	Type	Chain	Res	Link	Chirals	Torsions	Rings
3	GOL	B	502	-	-	0/4/4/4	-
2	HEM	B	501	1	-	4/12/54/54	-
3	GOL	A	504	-	-	0/4/4/4	-
3	GOL	E	502	-	-	0/4/4/4	-
3	GOL	B	505	-	-	2/4/4/4	-
3	GOL	E	503	-	-	1/4/4/4	-
3	GOL	A	502	-	-	1/4/4/4	-
2	HEM	E	501	1,4	-	4/12/54/54	-
2	HEM	A	501	1,4	-	4/12/54/54	-
3	GOL	G	503	-	-	0/4/4/4	-
3	GOL	E	505	-	-	0/4/4/4	-
2	HEM	G	501	1,4	-	4/12/54/54	-

The worst 5 of 29 bond length outliers are listed below:

Mol	Chain	Res	Type	Atoms	Z	Observed(Å)	Ideal(Å)
2	G	501	HEM	C3D-C2D	7.98	1.53	1.36
2	B	501	HEM	C3D-C2D	7.93	1.53	1.36
2	A	501	HEM	C3D-C2D	7.83	1.53	1.36
2	E	501	HEM	C3D-C2D	7.70	1.53	1.36
2	E	501	HEM	C3C-CAC	3.95	1.55	1.47

The worst 5 of 32 bond angle outliers are listed below:

Mol	Chain	Res	Type	Atoms	Z	Observed(°)	Ideal(°)
2	A	501	HEM	C4D-ND-C1D	6.27	111.55	105.07
2	E	501	HEM	C4D-ND-C1D	5.96	111.23	105.07
2	G	501	HEM	C4D-ND-C1D	5.76	111.03	105.07
2	B	501	HEM	C4D-ND-C1D	5.75	111.01	105.07
2	A	501	HEM	C4C-CHD-C1D	3.75	127.51	122.56

There are no chirality outliers.

5 of 20 torsion outliers are listed below:

Mol	Chain	Res	Type	Atoms
3	B	505	GOL	O1-C1-C2-C3
3	A	502	GOL	C1-C2-C3-O3

Continued on next page...

Continued from previous page...

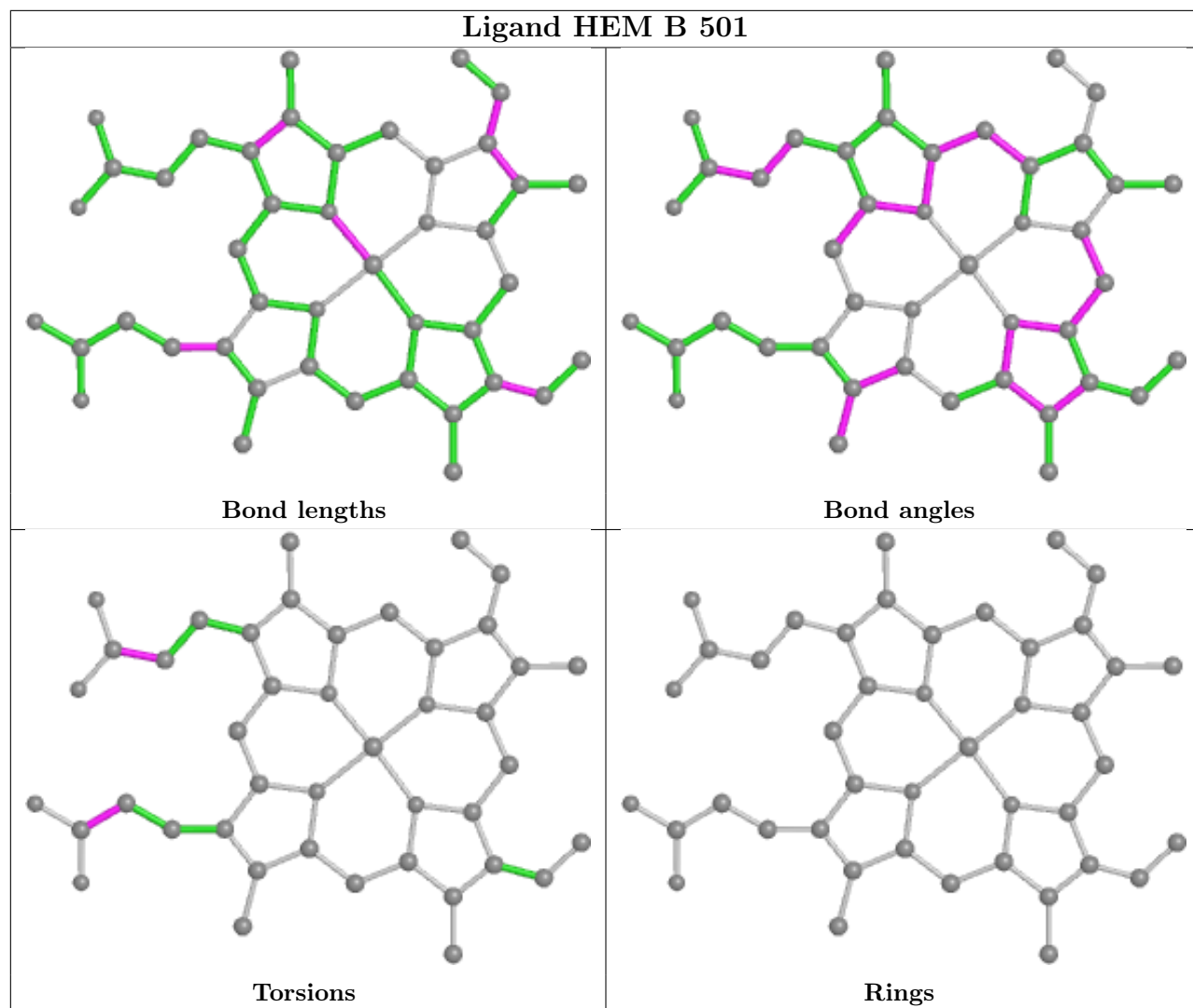
Mol	Chain	Res	Type	Atoms
2	G	501	HEM	CAA-CBA-CGA-O2A
2	G	501	HEM	CAD-CBD-CGD-O2D
2	B	501	HEM	CAA-CBA-CGA-O1A

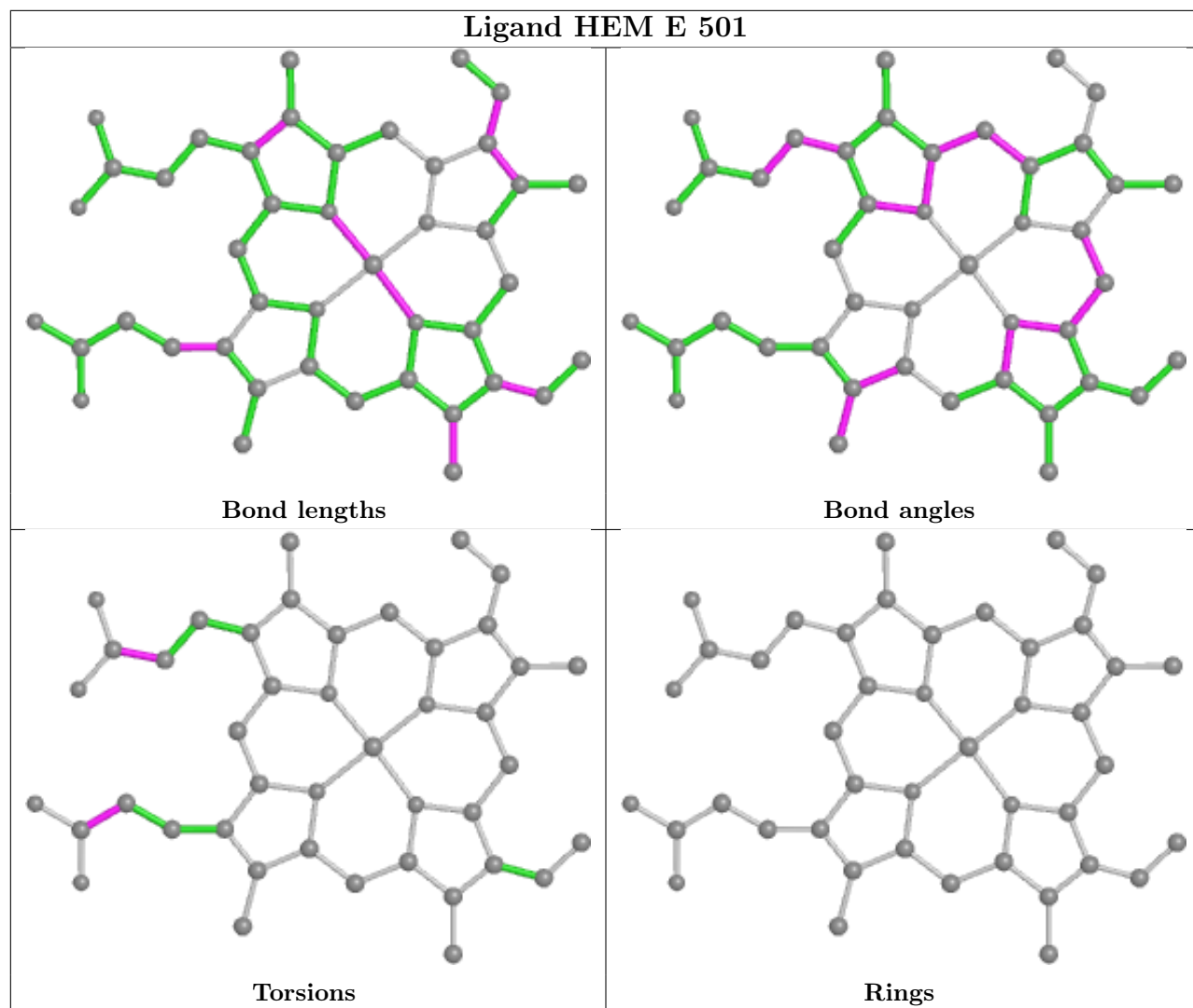
There are no ring outliers.

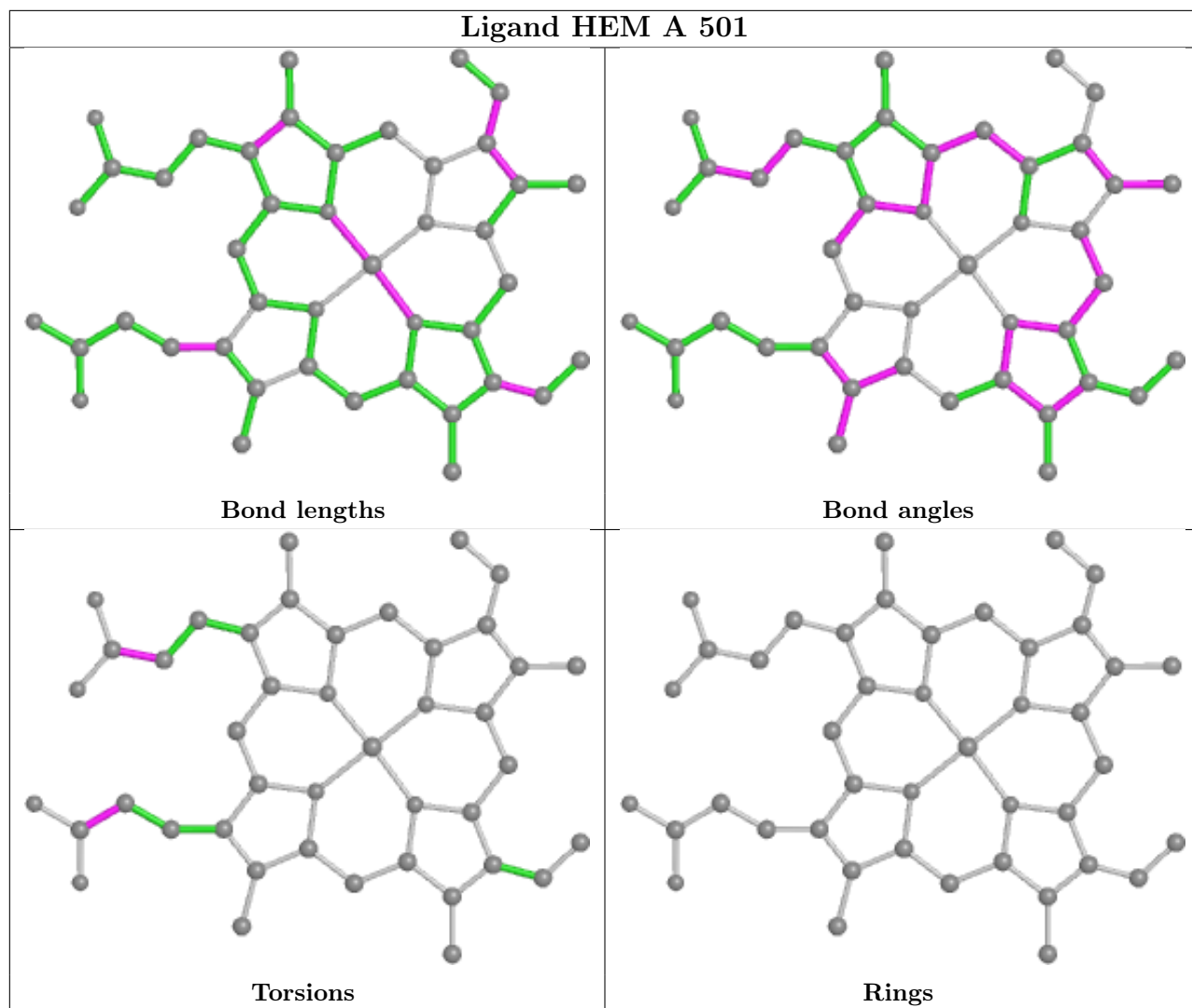
1 monomer is involved in 1 short contact:

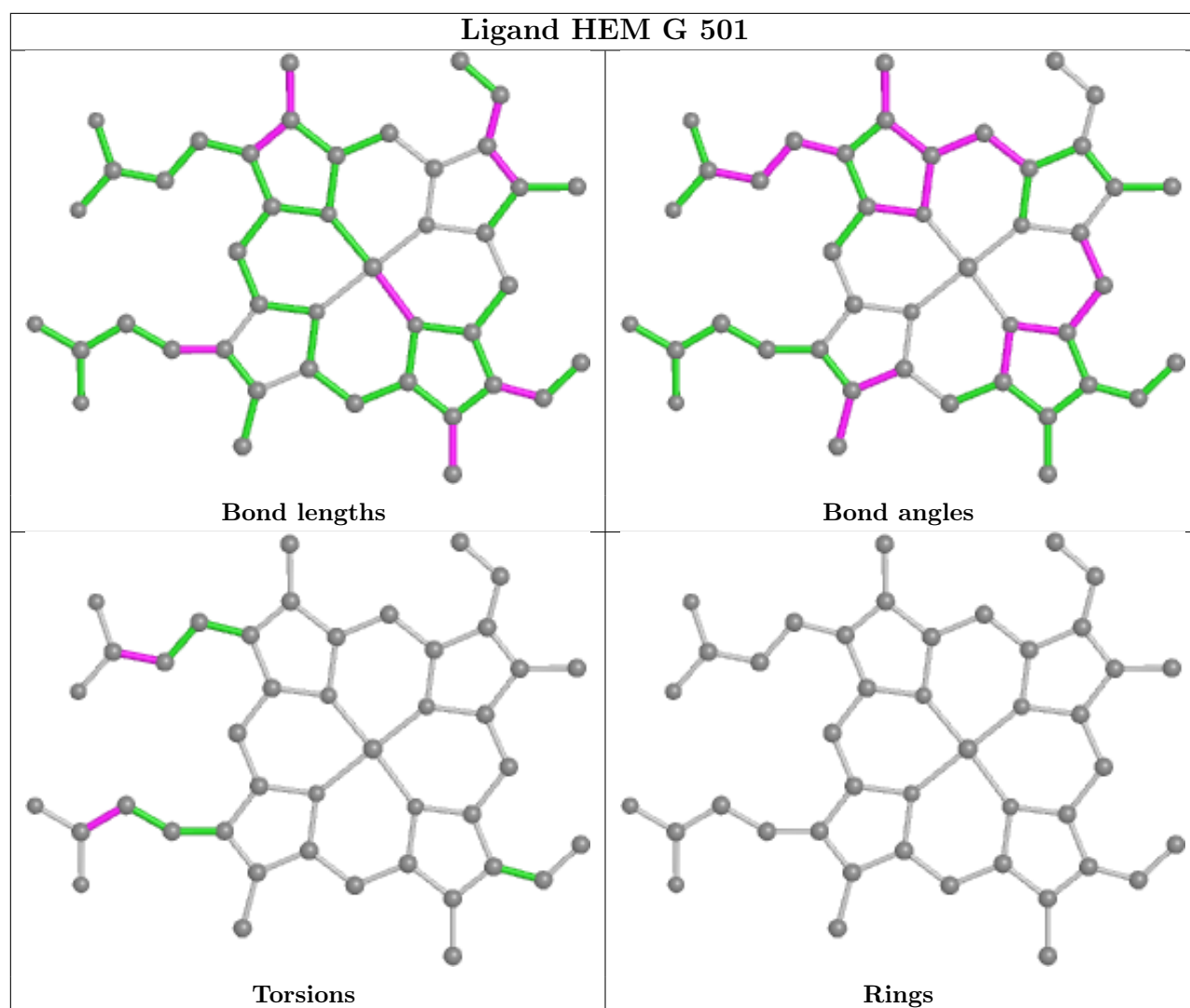
Mol	Chain	Res	Type	Clashes	Symm-Clashes
3	B	505	GOL	1	0

The following is a two-dimensional graphical depiction of Mogul quality analysis of bond lengths, bond angles, torsion angles, and ring geometry for all instances of the Ligand of Interest. In addition, ligands with molecular weight > 250 and outliers as shown on the validation Tables will also be included. For torsion angles, if less than 5% of the Mogul distribution of torsion angles is within 10 degrees of the torsion angle in question, then that torsion angle is considered an outlier. Any bond that is central to one or more torsion angles identified as an outlier by Mogul will be highlighted in the graph. For rings, the root-mean-square deviation (RMSD) between the ring in question and similar rings identified by Mogul is calculated over all ring torsion angles. If the average RMSD is greater than 60 degrees and the minimal RMSD between the ring in question and any Mogul-identified rings is also greater than 60 degrees, then that ring is considered an outlier. The outliers are highlighted in purple. The color gray indicates Mogul did not find sufficient equivalents in the CSD to analyse the geometry.









5.7 Other polymers [i](#)

There are no such residues in this entry.

5.8 Polymer linkage issues [i](#)

There are no chain breaks in this entry.

6 Fit of model and data [i](#)

6.1 Protein, DNA and RNA chains [i](#)

In the following table, the column labelled ‘#RSRZ > 2’ contains the number (and percentage) of RSRZ outliers, followed by percent RSRZ outliers for the chain as percentile scores relative to all X-ray entries and entries of similar resolution. The OWAB column contains the minimum, median, 95th percentile and maximum values of the occupancy-weighted average B-factor per residue. The column labelled ‘Q < 0.9’ lists the number of (and percentage) of residues with an average occupancy less than 0.9.

Mol	Chain	Analysed	<RSRZ>	#RSRZ>2	OWAB(Å ²)	Q<0.9
1	A	371/465 (79%)	-0.56	2 (0%) 91 89	6, 11, 27, 43	0
1	B	369/465 (79%)	-0.58	3 (0%) 86 84	6, 10, 29, 59	0
1	E	370/465 (79%)	-0.44	10 (2%) 54 49	7, 13, 33, 57	0
1	G	369/465 (79%)	-0.57	3 (0%) 86 84	6, 11, 26, 51	0
All	All	1479/1860 (79%)	-0.54	18 (1%) 79 76	6, 11, 29, 59	0

The worst 5 of 18 RSRZ outliers are listed below:

Mol	Chain	Res	Type	RSRZ
1	B	445	GLY	7.4
1	B	342	GLY	5.6
1	G	342	GLY	5.3
1	E	342	GLY	5.0
1	G	445	GLY	4.6

6.2 Non-standard residues in protein, DNA, RNA chains [i](#)

There are no non-standard protein/DNA/RNA residues in this entry.

6.3 Carbohydrates [i](#)

There are no monosaccharides in this entry.

6.4 Ligands [i](#)

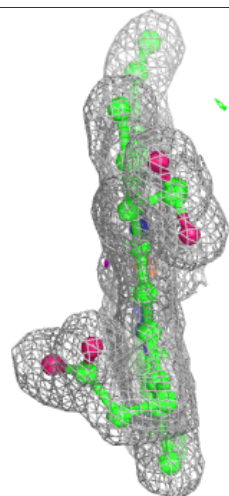
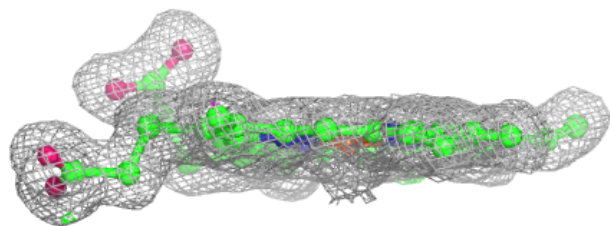
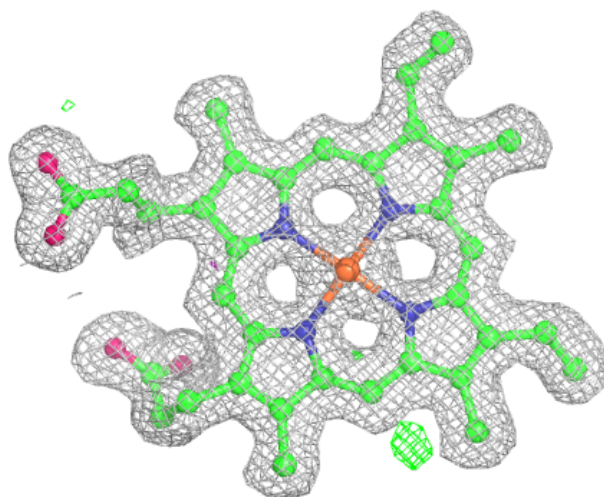
In the following table, the Atoms column lists the number of modelled atoms in the group and the number defined in the chemical component dictionary. The B-factors column lists the minimum, median, 95th percentile and maximum values of B factors of atoms in the group. The column labelled ‘Q < 0.9’ lists the number of atoms with occupancy less than 0.9.

Mol	Type	Chain	Res	Atoms	RSCC	RSR	B-factors(\AA^2)	Q<0.9
3	GOL	B	505	6/6	0.81	0.17	17,27,32,34	0
5	ACT	B	504	4/4	0.82	0.14	22,23,29,31	0
4	OXY	A	503	2/2	0.90	0.16	27,27,27,28	0
4	OXY	G	502	2/2	0.93	0.14	21,21,21,23	0
4	OXY	B	503	2/2	0.94	0.14	26,26,26,29	0
3	GOL	G	503	6/6	0.95	0.12	15,19,22,23	0
4	OXY	E	504	2/2	0.95	0.13	26,26,26,28	0
3	GOL	B	502	6/6	0.96	0.10	11,13,16,18	0
3	GOL	A	502	6/6	0.96	0.09	18,20,21,23	0
3	GOL	A	504	6/6	0.96	0.06	11,15,16,19	0
3	GOL	E	502	6/6	0.96	0.08	9,16,18,22	0
3	GOL	E	503	6/6	0.96	0.08	16,17,25,29	0
3	GOL	E	505	6/6	0.96	0.07	16,16,19,24	0
2	HEM	A	501	43/43	0.99	0.09	4,7,10,13	0
2	HEM	E	501	43/43	0.99	0.07	5,9,13,15	0
2	HEM	G	501	43/43	0.99	0.07	4,6,11,12	0
2	HEM	B	501	43/43	0.99	0.07	2,7,9,11	0

The following is a graphical depiction of the model fit to experimental electron density of all instances of the Ligand of Interest. In addition, ligands with molecular weight > 250 and outliers as shown on the geometry validation Tables will also be included. Each fit is shown from different orientation to approximate a three-dimensional view.

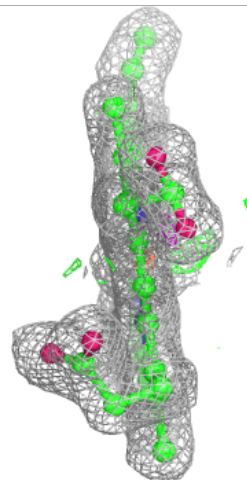
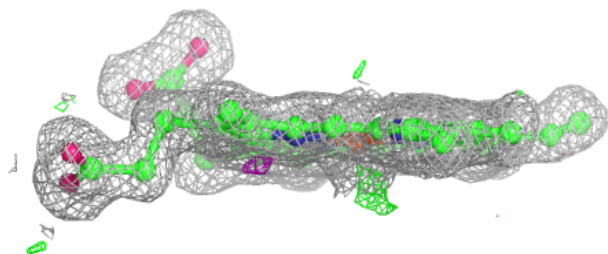
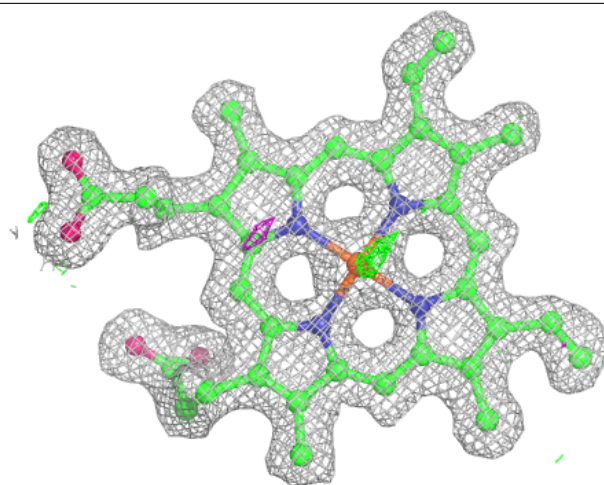
Electron density around HEM A 501:

$2mF_o-DF_c$ (at 0.7 rmsd) in gray
 mF_o-DF_c (at 3 rmsd) in purple (negative)
and green (positive)



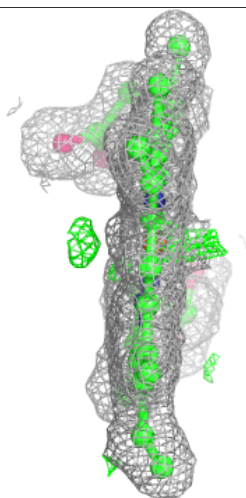
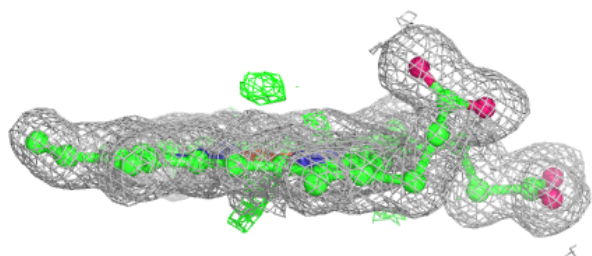
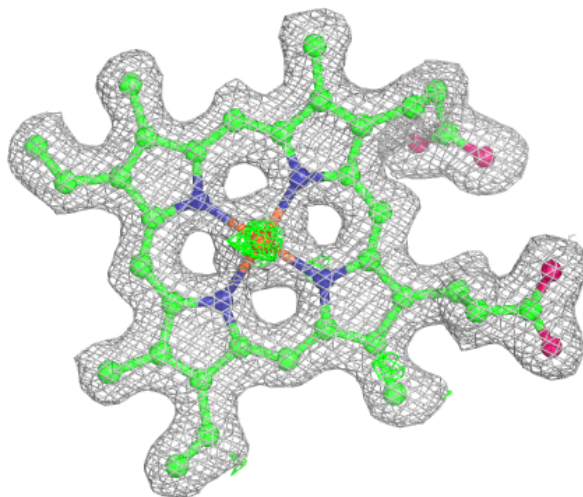
Electron density around HEM E 501:

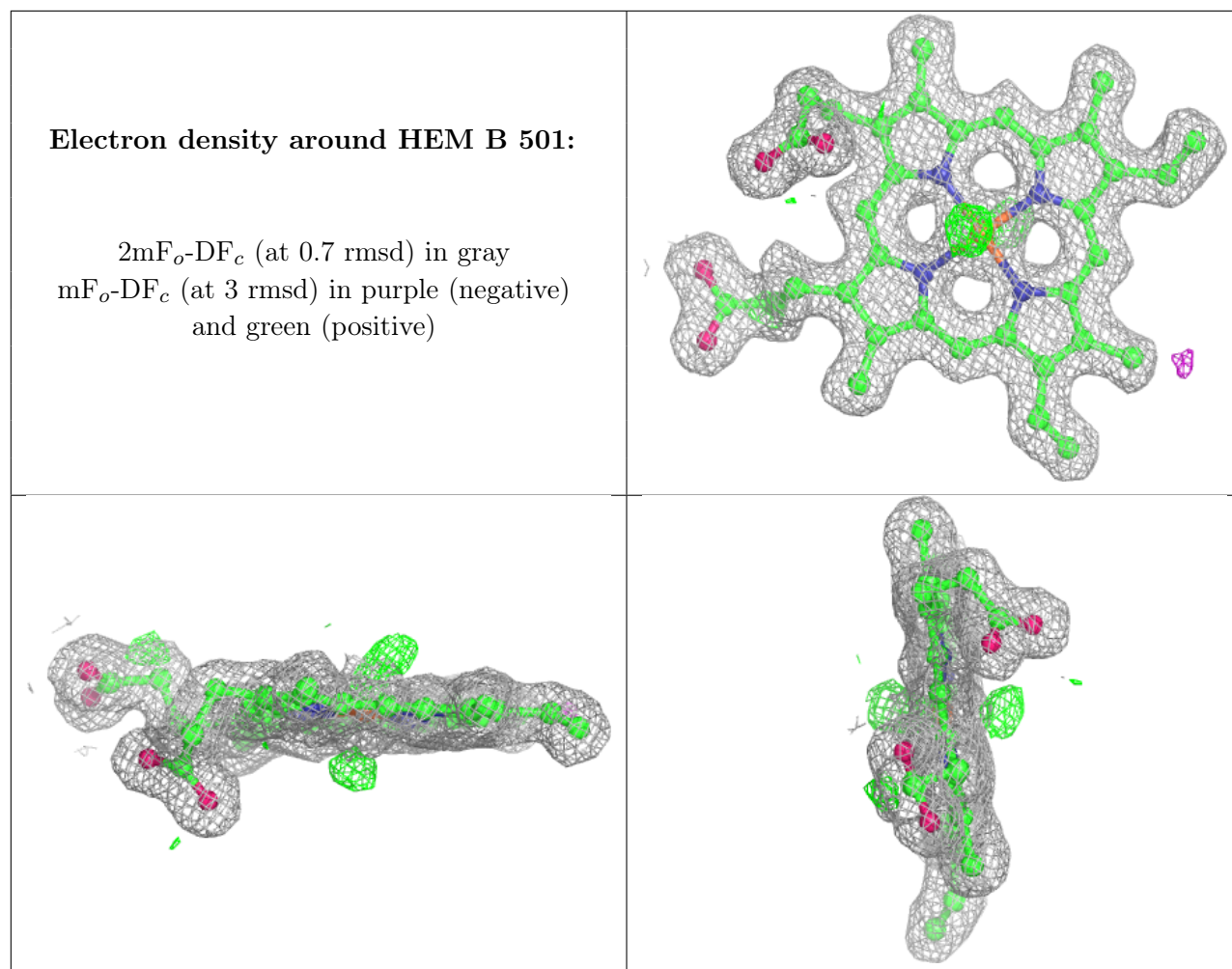
$2mF_o-DF_c$ (at 0.7 rmsd) in gray
 mF_o-DF_c (at 3 rmsd) in purple (negative)
and green (positive)



Electron density around HEM G 501:

$2mF_o-DF_c$ (at 0.7 rmsd) in gray
 mF_o-DF_c (at 3 rmsd) in purple (negative)
and green (positive)





6.5 Other polymers [i](#)

There are no such residues in this entry.