



Full wwPDB X-ray Structure Validation Report ⓘ

May 15, 2020 – 03:38 pm BST

PDB ID : 4GHS
Title : Crystal structure of human GLTP bound with 12:0 disulfatide (orthorombic form; two subunits in asymmetric unit)
Authors : Samygina, V.R.; Popov, A.N.; Goni-de-Cerio, F.; Cabo-Bilbao, A.; Malinina, L.
Deposited on : 2012-08-08
Resolution : 3.20 Å(reported)

This is a Full wwPDB X-ray Structure Validation Report for a publicly released PDB entry.

We welcome your comments at validation@mail.wwpdb.org

A user guide is available at

<https://www.wwpdb.org/validation/2017/XrayValidationReportHelp>

with specific help available everywhere you see the ⓘ symbol.

The following versions of software and data (see [references ⓘ](#)) were used in the production of this report:

MolProbity : 4.02b-467
Mogul : 1.8.5 (274361), CSD as541be (2020)
Xtriage (Phenix) : 1.13
EDS : 2.11
buster-report : 1.1.7 (2018)
Percentile statistics : 20191225.v01 (using entries in the PDB archive December 25th 2019)
Refmac : 5.8.0158
CCP4 : 7.0.044 (Gargrove)
Ideal geometry (proteins) : Engh & Huber (2001)
Ideal geometry (DNA, RNA) : Parkinson et al. (1996)
Validation Pipeline (wwPDB-VP) : 2.11

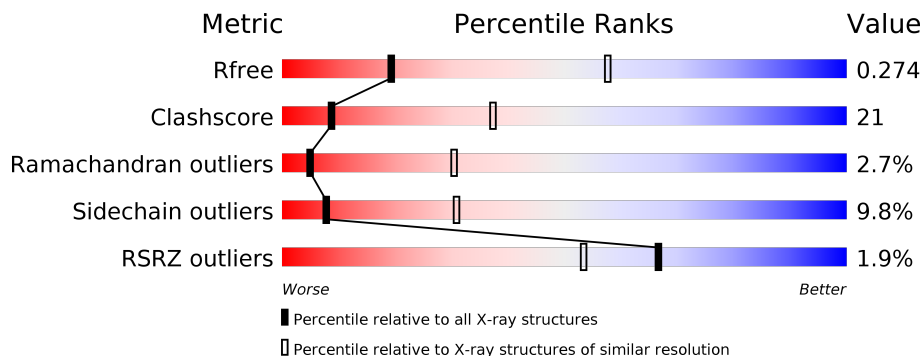
1 Overall quality at a glance i

The following experimental techniques were used to determine the structure:

X-RAY DIFFRACTION

The reported resolution of this entry is 3.20 Å.

Percentile scores (ranging between 0-100) for global validation metrics of the entry are shown in the following graphic. The table shows the number of entries on which the scores are based.



Metric	Whole archive (#Entries)	Similar resolution (#Entries, resolution range(Å))
R_{free}	130704	1133 (3.20-3.20)
Clashscore	141614	1253 (3.20-3.20)
Ramachandran outliers	138981	1234 (3.20-3.20)
Sidechain outliers	138945	1233 (3.20-3.20)
RSRZ outliers	127900	1095 (3.20-3.20)

The table below summarises the geometric issues observed across the polymeric chains and their fit to the electron density. The red, orange, yellow and green segments on the lower bar indicate the fraction of residues that contain outliers for ≥ 3 , 2, 1 and 0 types of geometric quality criteria respectively. A grey segment represents the fraction of residues that are not modelled. The numeric value for each fraction is indicated below the corresponding segment, with a dot representing fractions $\leq 5\%$. The upper red bar (where present) indicates the fraction of residues that have poor fit to the electron density. The numeric value is given above the bar.

Mol	Chain	Length	Quality of chain
1	A	209	<div style="display: flex; align-items: center;"> <div style="width: 2%; height: 10px; background-color: red; margin-right: 5px;"></div> <div style="width: 63%; height: 10px; background-color: green; margin-right: 5px;"></div> <div style="width: 29%; height: 10px; background-color: yellow; margin-right: 5px;"></div> <div style="width: 7%; height: 10px; background-color: orange; margin-right: 5px;"></div> <div style="width: 1%; height: 10px; background-color: grey;"></div> </div> <p style="font-size: small; margin-top: 5px;">% 63% 29% 7% •</p>
1	B	209	<div style="display: flex; align-items: center;"> <div style="width: 2%; height: 10px; background-color: red; margin-right: 5px;"></div> <div style="width: 53%; height: 10px; background-color: green; margin-right: 5px;"></div> <div style="width: 40%; height: 10px; background-color: yellow; margin-right: 5px;"></div> <div style="width: 6%; height: 10px; background-color: orange; margin-right: 5px;"></div> <div style="width: 1%; height: 10px; background-color: grey;"></div> </div> <p style="font-size: small; margin-top: 5px;">2% 53% 40% 6% ••</p>

2 Entry composition [i](#)

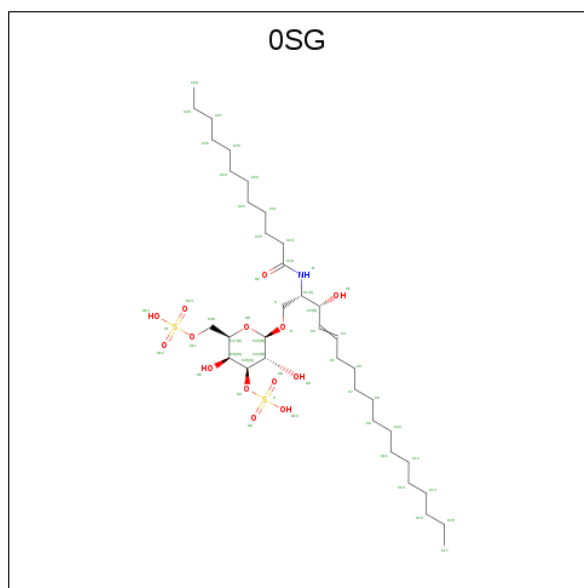
There are 2 unique types of molecules in this entry. The entry contains 3442 atoms, of which 0 are hydrogens and 0 are deuteriums.

In the tables below, the ZeroOcc column contains the number of atoms modelled with zero occupancy, the AltConf column contains the number of residues with at least one atom in alternate conformation and the Trace column contains the number of residues modelled with at most 2 atoms.

- Molecule 1 is a protein called Glycolipid transfer protein.

Mol	Chain	Residues	Atoms					ZeroOcc	AltConf	Trace
			Total	C	N	O	S			
1	A	207	Total 1668	C 1087	N 272	O 301	S 8	0	0	0
1	B	207	Total 1668	C 1087	N 272	O 301	S 8	0	0	0

- Molecule 2 is N-((2S,3R,4E)-1-[(3,6-di-O-sulfo-beta-D-galactopyranosyl)oxy]-3-hydroxyoctadec-4-en-2-yl)dodecanamide (three-letter code: OSG) (formula: C₃₆H₆₉NO₁₄S₂).

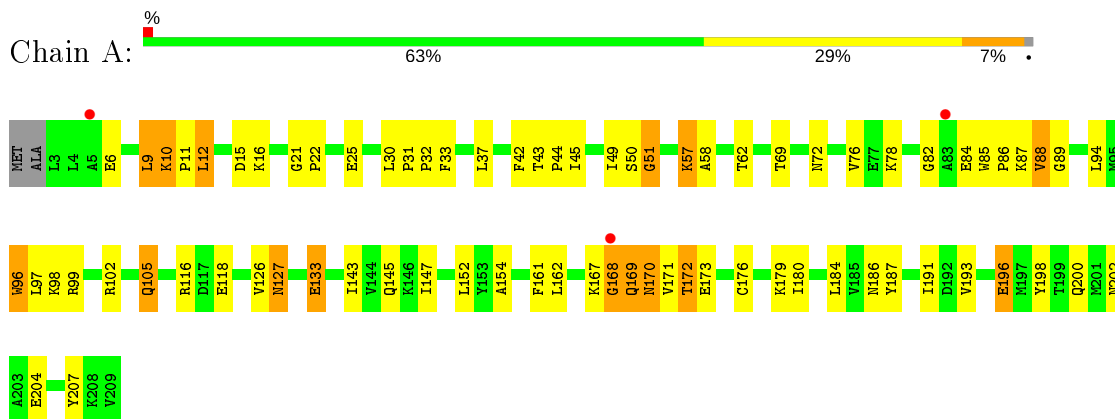


Mol	Chain	Residues	Atoms					ZeroOcc	AltConf
			Total	C	N	O	S		
2	A	1	Total 53	C 36	N 1	O 14	S 2	0	0
2	B	1	Total 53	C 36	N 1	O 14	S 2	0	0

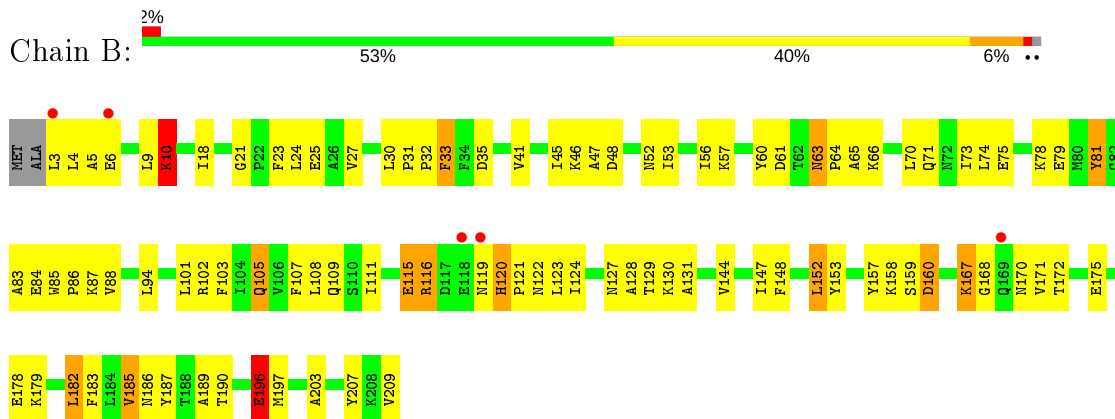
3 Residue-property plots [i](#)

These plots are drawn for all protein, RNA and DNA chains in the entry. The first graphic for a chain summarises the proportions of the various outlier classes displayed in the second graphic. The second graphic shows the sequence view annotated by issues in geometry and electron density. Residues are color-coded according to the number of geometric quality criteria for which they contain at least one outlier: green = 0, yellow = 1, orange = 2 and red = 3 or more. A red dot above a residue indicates a poor fit to the electron density ($RSRZ > 2$). Stretches of 2 or more consecutive residues without any outlier are shown as a green connector. Residues present in the sample, but not in the model, are shown in grey.

- Molecule 1: Glycolipid transfer protein



- Molecule 1: Glycolipid transfer protein



4 Data and refinement statistics

Property	Value	Source
Space group	P 21 21 21	Depositor
Cell constants a, b, c, α , β , γ	50.95Å 94.77Å 130.80Å 90.00° 90.00° 90.00°	Depositor
Resolution (Å)	14.99 – 3.20 14.99 – 3.20	Depositor EDS
% Data completeness (in resolution range)	97.9 (14.99-3.20) 97.9 (14.99-3.20)	Depositor EDS
R_{merge}	(Not available)	Depositor
R_{sym}	(Not available)	Depositor
$\langle I/\sigma(I) \rangle$ ¹	3.87 (at 3.19Å)	Xtrriage
Refinement program	REFMAC 5.2.0019	Depositor
R, R_{free}	0.193 , 0.276 0.189 , 0.274	Depositor DCC
R_{free} test set	511 reflections (4.81%)	wwPDB-VP
Wilson B-factor (Å ²)	49.8	Xtrriage
Anisotropy	0.124	Xtrriage
Bulk solvent k_{sol} (e/Å ³), B_{sol} (Å ²)	0.31 , 30.1	EDS
L-test for twinning ²	$\langle L \rangle = 0.49$, $\langle L^2 \rangle = 0.33$	Xtrriage
Estimated twinning fraction	No twinning to report.	Xtrriage
F_o, F_c correlation	0.93	EDS
Total number of atoms	3442	wwPDB-VP
Average B, all atoms (Å ²)	39.0	wwPDB-VP

Xtrriage's analysis on translational NCS is as follows: *The largest off-origin peak in the Patterson function is 5.06% of the height of the origin peak. No significant pseudotranslation is detected.*

¹ Intensities estimated from amplitudes.

² Theoretical values of $\langle |L| \rangle$, $\langle L^2 \rangle$ for acentric reflections are 0.5, 0.333 respectively for untwinned datasets, and 0.375, 0.2 for perfectly twinned datasets.

5 Model quality [i](#)

5.1 Standard geometry [i](#)

Bond lengths and bond angles in the following residue types are not validated in this section: OSG

The Z score for a bond length (or angle) is the number of standard deviations the observed value is removed from the expected value. A bond length (or angle) with $|Z| > 5$ is considered an outlier worth inspection. RMSZ is the root-mean-square of all Z scores of the bond lengths (or angles).

Mol	Chain	Bond lengths		Bond angles	
		RMSZ	# $ Z > 5$	RMSZ	# $ Z > 5$
1	A	1.08	4/1708 (0.2%)	0.94	0/2314
1	B	1.03	2/1708 (0.1%)	0.89	1/2314 (0.0%)
All	All	1.06	6/3416 (0.2%)	0.91	1/4628 (0.0%)

Chiral center outliers are detected by calculating the chiral volume of a chiral center and verifying if the center is modelled as a planar moiety or with the opposite hand. A planarity outlier is detected by checking planarity of atoms in a peptide group, atoms in a mainchain group or atoms of a sidechain that are expected to be planar.

Mol	Chain	#Chirality outliers	#Planarity outliers
1	A	0	1
1	B	0	2
All	All	0	3

All (6) bond length outliers are listed below:

Mol	Chain	Res	Type	Atoms	Z	Observed(Å)	Ideal(Å)
1	B	196	GLU	CG-CD	6.25	1.61	1.51
1	A	96	TRP	CE3-CZ3	-5.88	1.28	1.38
1	A	133	GLU	CB-CG	5.67	1.62	1.52
1	B	48	ASP	CB-CG	5.13	1.62	1.51
1	A	196	GLU	CD-OE2	5.06	1.31	1.25
1	A	96	TRP	CE2-CZ2	-5.02	1.31	1.39

All (1) bond angle outliers are listed below:

Mol	Chain	Res	Type	Atoms	Z	Observed($^{\circ}$)	Ideal($^{\circ}$)
1	B	152	LEU	CA-CB-CG	8.37	134.56	115.30

There are no chirality outliers.

All (3) planarity outliers are listed below:

Mol	Chain	Res	Type	Group
1	A	82	GLY	Peptide
1	B	3	LEU	Peptide
1	B	5	ALA	Peptide

5.2 Too-close contacts

In the following table, the Non-H and H(model) columns list the number of non-hydrogen atoms and hydrogen atoms in the chain respectively. The H(added) column lists the number of hydrogen atoms added and optimized by MolProbity. The Clashes column lists the number of clashes within the asymmetric unit, whereas Symm-Clashes lists symmetry related clashes.

Mol	Chain	Non-H	H(model)	H(added)	Clashes	Symm-Clashes
1	A	1668	0	1693	63	0
1	B	1668	0	1693	81	0
2	A	53	0	69	5	0
2	B	53	0	69	11	0
All	All	3442	0	3524	143	0

The all-atom clashscore is defined as the number of clashes found per 1000 atoms (including hydrogen atoms). The all-atom clashscore for this structure is 21.

All (143) close contacts within the same asymmetric unit are listed below, sorted by their clash magnitude.

Atom-1	Atom-2	Interatomic distance (Å)	Clash overlap (Å)
1:A:45:ILE:HG23	2:A:301:0SG:H54	1.48	0.92
1:B:24:LEU:HD21	1:B:56:ILE:HG22	1.52	0.92
1:B:24:LEU:HD21	1:B:56:ILE:CG2	2.00	0.90
1:A:11:PRO:HA	1:A:186:ASN:ND2	1.95	0.82
1:A:169:GLN:O	1:A:170:ASN:HB3	1.83	0.77
1:B:85:TRP:CH2	1:B:203:ALA:HB2	2.20	0.77
1:A:43:THR:HB	1:A:44:PRO:HD3	1.65	0.76
1:A:45:ILE:HD11	2:B:301:0SG:H9	1.68	0.75
1:A:127:ASN:H	1:A:127:ASN:HD22	1.41	0.69
2:A:301:0SG:H9	1:B:45:ILE:HD11	1.74	0.68
1:A:45:ILE:HD11	2:B:301:0SG:C13	2.25	0.67
1:A:12:LEU:HD11	1:A:193:VAL:HG21	1.78	0.66
1:B:171:VAL:HG23	1:B:172:THR:O	1.95	0.66
1:B:167:LYS:HE2	1:B:167:LYS:HA	1.78	0.65
1:B:147:ILE:HG21	2:B:301:0SG:H20	1.78	0.65

Continued on next page...

Continued from previous page...

Atom-1	Atom-2	Interatomic distance (Å)	Clash overlap (Å)
1:A:11:PRO:HA	1:A:186:ASN:HD21	1.61	0.63
1:B:178:GLU:O	1:B:182:LEU:HD22	1.99	0.62
1:A:45:ILE:HD11	2:B:301:OSG:H10	1.82	0.61
1:B:24:LEU:HD21	1:B:56:ILE:HG21	1.80	0.61
1:A:57:LYS:HB3	1:A:57:LYS:NZ	2.15	0.61
1:A:127:ASN:H	1:A:127:ASN:ND2	1.99	0.61
1:A:72:ASN:O	1:A:76:VAL:HG23	2.02	0.60
1:B:144:VAL:HG21	1:B:209:VAL:HG23	1.83	0.60
1:A:45:ILE:HD11	2:B:301:OSG:C14	2.30	0.60
1:B:207:TYR:HE1	2:B:301:OSG:O13	1.85	0.60
1:B:81:TYR:HB3	1:B:84:GLU:HB2	1.83	0.59
1:A:170:ASN:C	1:A:171:VAL:HG13	2.23	0.59
1:A:84:GLU:HB3	1:A:88:VAL:HG11	1.85	0.58
1:B:32:PRO:O	1:B:35:ASP:HB2	2.04	0.57
1:B:167:LYS:CE	1:B:167:LYS:HA	2.34	0.57
1:B:122:ASN:O	1:B:157:TYR:HA	2.04	0.57
1:A:21:GLY:N	1:A:22:PRO:HD2	2.20	0.56
1:A:87:LYS:HE3	1:A:207:TYR:CE2	2.40	0.56
1:A:102:ARG:HH11	1:A:105:GLN:NE2	2.04	0.55
1:A:170:ASN:O	1:A:171:VAL:CG1	2.55	0.55
1:B:27:VAL:HG23	1:B:53:ILE:CD1	2.36	0.55
1:A:94:LEU:HB3	1:A:198:TYR:OH	2.06	0.55
1:A:11:PRO:CA	1:A:186:ASN:HD21	2.20	0.54
1:B:185:VAL:HG12	1:B:186:ASN:N	2.21	0.54
1:A:98:LYS:NZ	1:A:204:GLU:OE1	2.36	0.54
1:B:45:ILE:HG23	2:B:301:OSG:H53	1.90	0.53
1:B:74:LEU:HD22	1:B:197:MET:SD	2.48	0.53
1:A:45:ILE:CG2	2:A:301:OSG:H54	2.31	0.53
1:A:42:PHE:CZ	1:A:154:ALA:HB3	2.44	0.53
1:B:30:LEU:O	1:B:33:PHE:HB3	2.08	0.53
1:A:97:LEU:HD12	1:A:97:LEU:O	2.09	0.53
1:B:85:TRP:CG	1:B:86:PRO:HA	2.45	0.52
1:B:45:ILE:HD12	2:B:301:OSG:H58	1.92	0.52
1:B:172:THR:OG1	1:B:175:GLU:HB2	2.09	0.52
1:B:179:LYS:HA	1:B:182:LEU:HD23	1.91	0.52
1:A:99:ARG:NH2	1:A:204:GLU:OE2	2.40	0.52
1:A:11:PRO:CA	1:A:186:ASN:ND2	2.71	0.51
1:B:116:ARG:HG3	1:B:121:PRO:HB3	1.90	0.51
1:B:87:LYS:O	1:B:88:VAL:HG13	2.10	0.51
1:A:45:ILE:CD1	2:B:301:OSG:H9	2.40	0.51
1:A:85:TRP:CG	1:A:86:PRO:HA	2.45	0.51

Continued on next page...

Continued from previous page...

Atom-1	Atom-2	Interatomic distance (Å)	Clash overlap (Å)
1:A:87:LYS:C	1:A:88:VAL:CG1	2.79	0.51
1:B:102:ARG:HH11	1:B:105:GLN:HE22	1.57	0.51
1:A:30:LEU:O	1:A:33:PHE:CB	2.59	0.51
1:B:70:LEU:HA	1:B:73:ILE:HD12	1.92	0.51
1:B:27:VAL:HG23	1:B:53:ILE:HD11	1.92	0.50
1:B:10:LYS:O	1:B:186:ASN:ND2	2.43	0.50
1:A:127:ASN:ND2	1:A:127:ASN:N	2.60	0.50
1:A:173:GLU:O	1:A:176:CYS:HB3	2.12	0.49
1:B:111:ILE:HG23	1:B:158:LYS:HD2	1.94	0.49
1:B:81:TYR:CB	1:B:84:GLU:HB2	2.41	0.49
1:B:207:TYR:CE1	2:B:301:OSG:O13	2.64	0.49
1:B:4:LEU:HD22	1:B:30:LEU:HD21	1.95	0.49
1:B:61:ASP:O	1:B:64:PRO:HD3	2.13	0.48
1:B:168:GLY:C	1:B:170:ASN:H	2.17	0.48
1:A:170:ASN:C	1:A:171:VAL:CG1	2.83	0.47
1:B:31:PRO:O	1:B:32:PRO:C	2.52	0.47
2:A:301:OSG:C14	1:B:45:ILE:HD11	2.44	0.47
2:A:301:OSG:H7	1:B:148:PHE:HB2	1.96	0.47
1:A:180:ILE:HG22	1:A:184:LEU:HD12	1.97	0.47
1:B:85:TRP:HA	1:B:88:VAL:HG22	1.96	0.47
1:A:96:TRP:O	1:A:97:LEU:C	2.52	0.46
1:B:4:LEU:HD22	1:B:30:LEU:CD2	2.45	0.46
1:A:143:ILE:HD13	1:B:153:TYR:HB2	1.96	0.46
1:A:88:VAL:HG23	1:A:89:GLY:N	2.30	0.46
1:B:23:PHE:O	1:B:27:VAL:HG13	2.16	0.46
1:B:63:ASN:ND2	1:B:66:LYS:HE3	2.30	0.46
1:B:115:GLU:OE1	1:B:130:LYS:NZ	2.41	0.45
1:B:30:LEU:O	1:B:33:PHE:CB	2.64	0.45
1:A:102:ARG:HH11	1:A:105:GLN:HE21	1.64	0.45
1:A:170:ASN:O	1:A:171:VAL:HG13	2.16	0.45
1:B:63:ASN:O	1:B:65:ALA:N	2.49	0.45
1:A:168:GLY:O	1:A:170:ASN:N	2.49	0.45
1:B:159:SER:OG	1:B:160:ASP:N	2.50	0.45
1:A:58:ALA:O	1:A:62:THR:HG23	2.17	0.45
1:B:101:LEU:O	1:B:187:TYR:OH	2.26	0.45
1:B:18:ILE:HD13	1:B:190:THR:HG23	1.99	0.45
1:B:60:TYR:CZ	1:B:64:PRO:HB3	2.52	0.45
1:B:119:ASN:C	1:B:120:HIS:CG	2.91	0.44
1:A:43:THR:HB	1:A:44:PRO:CD	2.41	0.44
1:B:107:PHE:HZ	1:B:124:ILE:HD12	1.82	0.44
1:B:4:LEU:CD2	1:B:30:LEU:CD2	2.96	0.44

Continued on next page...

Continued from previous page...

Atom-1	Atom-2	Interatomic distance (Å)	Clash overlap (Å)
1:B:57:LYS:O	1:B:60:TYR:HB3	2.17	0.44
1:B:30:LEU:HD11	1:B:183:PHE:HZ	1.82	0.44
1:B:119:ASN:N	1:B:119:ASN:HD22	2.16	0.44
1:B:102:ARG:O	1:B:103:PHE:C	2.57	0.43
1:A:32:PRO:O	1:A:33:PHE:C	2.57	0.43
1:A:87:LYS:O	1:A:88:VAL:HG12	2.18	0.43
1:B:31:PRO:N	1:B:32:PRO:HD2	2.34	0.43
1:B:124:ILE:HA	1:B:127:ASN:ND2	2.33	0.43
1:A:69:THR:HG23	1:A:72:ASN:ND2	2.34	0.43
1:B:129:THR:O	1:B:130:LYS:C	2.57	0.43
1:B:105:GLN:HB2	1:B:187:TYR:CE2	2.53	0.43
1:B:21:GLY:O	1:B:25:GLU:HB2	2.19	0.43
1:B:9:LEU:O	1:B:10:LYS:O	2.37	0.43
1:B:108:LEU:O	1:B:109:GLN:C	2.56	0.42
1:A:169:GLN:O	1:A:170:ASN:CB	2.59	0.42
1:B:9:LEU:C	1:B:10:LYS:O	2.58	0.42
1:B:24:LEU:CD1	1:B:57:LYS:HA	2.48	0.42
1:B:75:GLU:O	1:B:79:GLU:HG3	2.19	0.42
1:A:15:ASP:O	1:A:16:LYS:HB2	2.19	0.42
1:A:169:GLN:HE22	1:A:179:LYS:HE2	1.84	0.42
1:A:31:PRO:N	1:A:32:PRO:HD2	2.33	0.42
1:A:50:SER:O	1:A:51:GLY:C	2.58	0.42
1:A:69:THR:H	1:A:72:ASN:ND2	2.17	0.42
1:B:24:LEU:HD11	1:B:57:LYS:HA	2.01	0.42
1:B:196:GLU:O	1:B:197:MET:C	2.58	0.42
1:A:161:PHE:O	1:A:162:LEU:C	2.58	0.42
1:B:120:HIS:HB2	1:B:123:LEU:HG	2.01	0.42
1:A:30:LEU:O	1:A:33:PHE:HB3	2.19	0.42
1:B:56:ILE:HD11	1:B:94:LEU:CA	2.50	0.42
1:B:128:ALA:O	1:B:131:ALA:HB3	2.21	0.41
1:B:103:PHE:CZ	2:B:301:OSG:H60	2.55	0.41
1:A:37:LEU:HD23	1:A:161:PHE:CD1	2.56	0.41
1:A:37:LEU:HA	1:A:37:LEU:HD23	1.89	0.41
1:B:56:ILE:HD11	1:B:94:LEU:HA	2.01	0.41
1:A:49:ILE:O	1:A:50:SER:C	2.58	0.41
1:A:143:ILE:O	1:A:147:ILE:HD12	2.20	0.41
1:B:30:LEU:HA	1:B:30:LEU:HD23	1.79	0.41
1:A:187:TYR:CZ	1:A:191:ILE:HD11	2.55	0.41
1:A:78:LYS:HG3	1:A:85:TRP:CE3	2.56	0.41
1:B:85:TRP:HH2	1:B:203:ALA:HB2	1.79	0.41
1:B:63:ASN:N	1:B:64:PRO:HD3	2.35	0.41

Continued on next page...

Continued from previous page...

Atom-1	Atom-2	Interatomic distance (Å)	Clash overlap (Å)
1:A:9:LEU:HD23	1:A:10:LYS:NZ	2.36	0.41
1:B:102:ARG:NH1	1:B:105:GLN:HE22	2.19	0.41
1:A:87:LYS:C	1:A:88:VAL:HG12	2.40	0.40
1:B:189:ALA:O	1:B:190:THR:C	2.59	0.40
1:B:46:LYS:O	1:B:47:ALA:C	2.60	0.40

There are no symmetry-related clashes.

5.3 Torsion angles [i](#)

5.3.1 Protein backbone [i](#)

In the following table, the Percentiles column shows the percent Ramachandran outliers of the chain as a percentile score with respect to all X-ray entries followed by that with respect to entries of similar resolution.

The Analysed column shows the number of residues for which the backbone conformation was analysed, and the total number of residues.

Mol	Chain	Analysed	Favoured	Allowed	Outliers	Percentiles	
1	A	205/209 (98%)	184 (90%)	15 (7%)	6 (3%)	4	28
1	B	205/209 (98%)	172 (84%)	28 (14%)	5 (2%)	6	34
All	All	410/418 (98%)	356 (87%)	43 (10%)	11 (3%)	5	30

All (11) Ramachandran outliers are listed below:

Mol	Chain	Res	Type
1	A	169	GLN
1	A	170	ASN
1	A	168	GLY
1	B	33	PHE
1	B	83	ALA
1	B	10	LYS
1	A	152	LEU
1	A	172	THR
1	B	185	VAL
1	A	51	GLY
1	B	63	ASN

5.3.2 Protein sidechains [i](#)

In the following table, the Percentiles column shows the percent sidechain outliers of the chain as a percentile score with respect to all X-ray entries followed by that with respect to entries of similar resolution.

The Analysed column shows the number of residues for which the sidechain conformation was analysed, and the total number of residues.

Mol	Chain	Analysed	Rotameric	Outliers	Percentiles	
1	A	179/180 (99%)	160 (89%)	19 (11%)	6	27
1	B	179/180 (99%)	163 (91%)	16 (9%)	9	35
All	All	358/360 (99%)	323 (90%)	35 (10%)	8	31

All (35) residues with a non-rotameric sidechain are listed below:

Mol	Chain	Res	Type
1	A	6	GLU
1	A	9	LEU
1	A	10	LYS
1	A	12	LEU
1	A	25	GLU
1	A	57	LYS
1	A	88	VAL
1	A	105	GLN
1	A	116	ARG
1	A	118	GLU
1	A	126	VAL
1	A	127	ASN
1	A	133	GLU
1	A	145	GLN
1	A	167	LYS
1	A	172	THR
1	A	196	GLU
1	A	200	GLN
1	A	202	ASN
1	B	6	GLU
1	B	10	LYS
1	B	41	VAL
1	B	52	ASN
1	B	71	GLN
1	B	78	LYS
1	B	81	TYR
1	B	105	GLN

Continued on next page...

Continued from previous page...

Mol	Chain	Res	Type
1	B	115	GLU
1	B	116	ARG
1	B	120	HIS
1	B	152	LEU
1	B	160	ASP
1	B	167	LYS
1	B	182	LEU
1	B	196	GLU

Some sidechains can be flipped to improve hydrogen bonding and reduce clashes. All (11) such sidechains are listed below:

Mol	Chain	Res	Type
1	A	7	HIS
1	A	72	ASN
1	A	105	GLN
1	A	119	ASN
1	A	127	ASN
1	A	145	GLN
1	A	169	GLN
1	A	186	ASN
1	B	52	ASN
1	B	109	GLN
1	B	119	ASN

5.3.3 RNA [i](#)

There are no RNA molecules in this entry.

5.4 Non-standard residues in protein, DNA, RNA chains [i](#)

There are no non-standard protein/DNA/RNA residues in this entry.

5.5 Carbohydrates [i](#)

There are no carbohydrates in this entry.

5.6 Ligand geometry [i](#)

2 ligands are modelled in this entry.

In the following table, the Counts columns list the number of bonds (or angles) for which Mogul statistics could be retrieved, the number of bonds (or angles) that are observed in the model and the number of bonds (or angles) that are defined in the Chemical Component Dictionary. The Link column lists molecule types, if any, to which the group is linked. The Z score for a bond length (or angle) is the number of standard deviations the observed value is removed from the expected value. A bond length (or angle) with $|Z| > 2$ is considered an outlier worth inspection. RMSZ is the root-mean-square of all Z scores of the bond lengths (or angles).

Mol	Type	Chain	Res	Link	Bond lengths			Bond angles		
					Counts	RMSZ	# Z > 2	Counts	RMSZ	# Z > 2
2	OSG	B	301	-	52,53,53	0.79	0	58,67,67	1.45	10 (17%)
2	OSG	A	301	-	52,53,53	0.76	1 (1%)	58,67,67	1.58	12 (20%)

In the following table, the Chirals column lists the number of chiral outliers, the number of chiral centers analysed, the number of these observed in the model and the number defined in the Chemical Component Dictionary. Similar counts are reported in the Torsion and Rings columns. '-' means no outliers of that kind were identified.

Mol	Type	Chain	Res	Link	Chirals	Torsions	Rings
2	OSG	B	301	-	-	19/50/70/70	0/1/1/1
2	OSG	A	301	-	-	17/50/70/70	0/1/1/1

All (1) bond length outliers are listed below:

Mol	Chain	Res	Type	Atoms	Z	Observed(Å)	Ideal(Å)
2	A	301	OSG	O4-C45	-2.87	1.40	1.46

All (22) bond angle outliers are listed below:

Mol	Chain	Res	Type	Atoms	Z	Observed(°)	Ideal(°)
2	B	301	OSG	O6-C47-C46	4.23	117.38	109.69
2	A	301	OSG	O6-C47-C46	4.11	117.16	109.69
2	A	301	OSG	C45-O4-S	3.92	126.46	118.88
2	B	301	OSG	C1-N-C18	-3.65	117.33	123.48
2	A	301	OSG	C43-O6-C47	-3.30	107.20	113.69
2	A	301	OSG	C-O-C43	-3.24	107.41	113.74
2	B	301	OSG	C48-C47-C46	-3.04	105.75	112.09
2	A	301	OSG	C-C1-N	-3.00	105.20	109.61
2	B	301	OSG	C45-C46-C47	2.77	115.57	109.66
2	A	301	OSG	C46-C45-C44	-2.74	106.90	110.85
2	A	301	OSG	C2-C3-C4	-2.72	118.72	124.79
2	B	301	OSG	O11-C48-C47	-2.52	102.92	107.62
2	A	301	OSG	O1-C2-C1	2.52	114.61	107.93

Continued on next page...

Continued from previous page...

Mol	Chain	Res	Type	Atoms	Z	Observed(°)	Ideal(°)
2	B	301	0SG	C-C1-C2	-2.32	107.48	112.92
2	B	301	0SG	C43-C44-C45	2.30	114.12	110.07
2	A	301	0SG	O14-S1-O13	-2.30	100.51	108.49
2	A	301	0SG	C43-C44-C45	2.26	114.05	110.07
2	A	301	0SG	C-C1-C2	-2.24	107.67	112.92
2	B	301	0SG	O10-S-O8	-2.23	100.74	108.49
2	A	301	0SG	O5-C46-C45	-2.12	104.33	109.94
2	B	301	0SG	C20-C19-C18	-2.04	107.54	113.26
2	B	301	0SG	C5-C4-C3	-2.02	116.35	125.39

There are no chirality outliers.

All (36) torsion outliers are listed below:

Mol	Chain	Res	Type	Atoms
2	B	301	0SG	O-C-C1-C2
2	B	301	0SG	C44-C45-O4-S
2	B	301	0SG	C46-C45-O4-S
2	B	301	0SG	C45-O4-S-O10
2	A	301	0SG	C44-C45-O4-S
2	A	301	0SG	C46-C45-O4-S
2	A	301	0SG	O6-C47-C48-O11
2	A	301	0SG	C46-C47-C48-O11
2	B	301	0SG	C24-C25-C26-C27
2	B	301	0SG	C25-C26-C27-C28
2	B	301	0SG	C11-C10-C9-C8
2	A	301	0SG	C23-C24-C25-C26
2	B	301	0SG	C45-O4-S-O9
2	B	301	0SG	C45-O4-S-O8
2	A	301	0SG	C45-O4-S-O9
2	A	301	0SG	C45-O4-S-O8
2	B	301	0SG	C22-C23-C24-C25
2	A	301	0SG	C12-C13-C14-C15
2	B	301	0SG	O6-C47-C48-O11
2	B	301	0SG	C46-C47-C48-O11
2	A	301	0SG	C18-C19-C20-C21
2	A	301	0SG	C11-C10-C9-C8
2	A	301	0SG	C24-C25-C26-C27
2	B	301	0SG	O6-C43-O-C
2	A	301	0SG	C45-O4-S-O10
2	B	301	0SG	C14-C15-C16-C17
2	B	301	0SG	C44-C43-O-C
2	A	301	0SG	C21-C22-C23-C24

Continued on next page...

Continued from previous page...

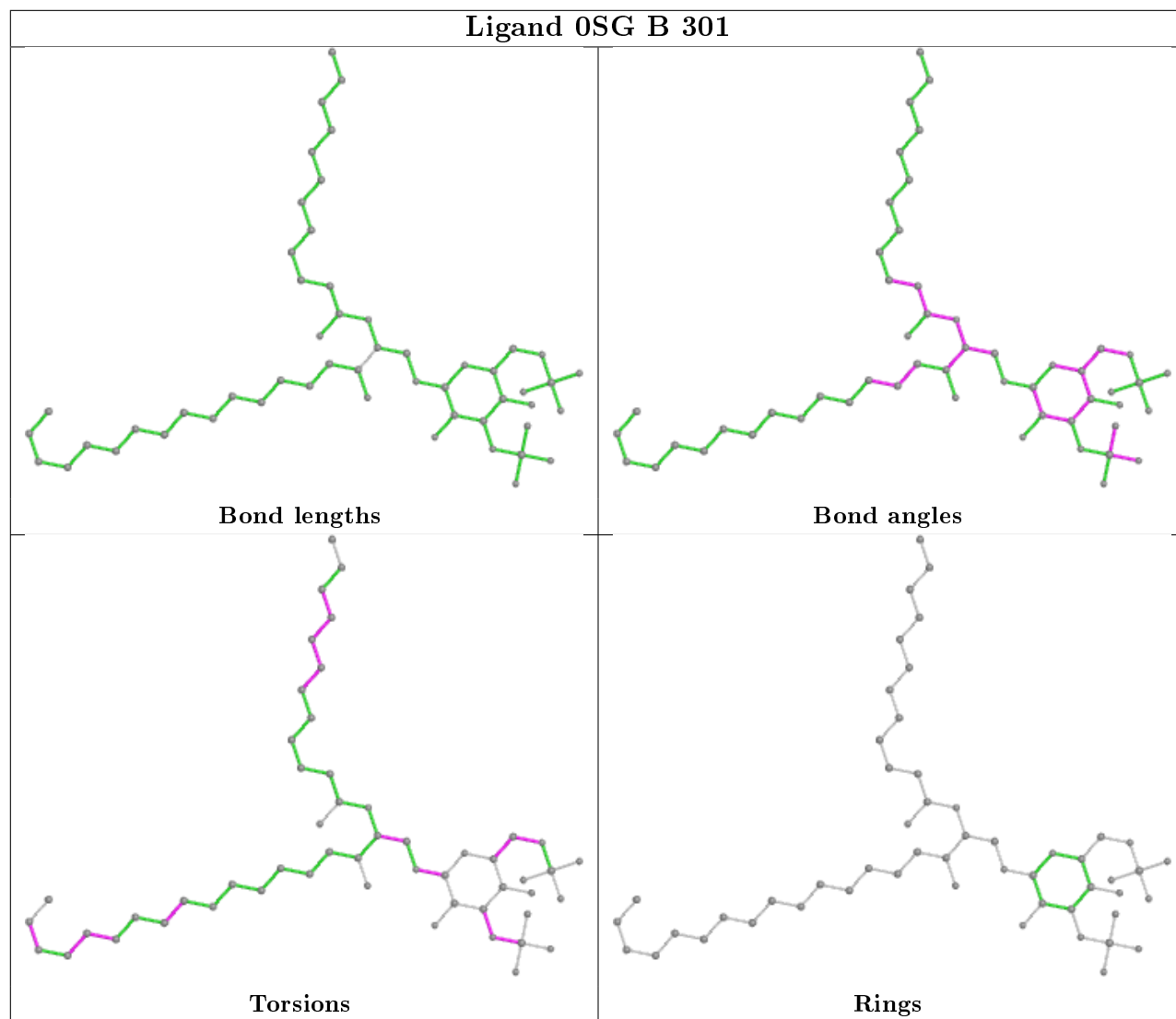
Mol	Chain	Res	Type	Atoms
2	A	301	0SG	C13-C14-C15-C16
2	A	301	0SG	C5-C6-C7-C8
2	B	301	0SG	C11-C12-C13-C14
2	A	301	0SG	C25-C26-C27-C28
2	B	301	0SG	C12-C13-C14-C15
2	B	301	0SG	C23-C24-C25-C26
2	B	301	0SG	C47-C48-O11-S1
2	A	301	0SG	C14-C15-C16-C17

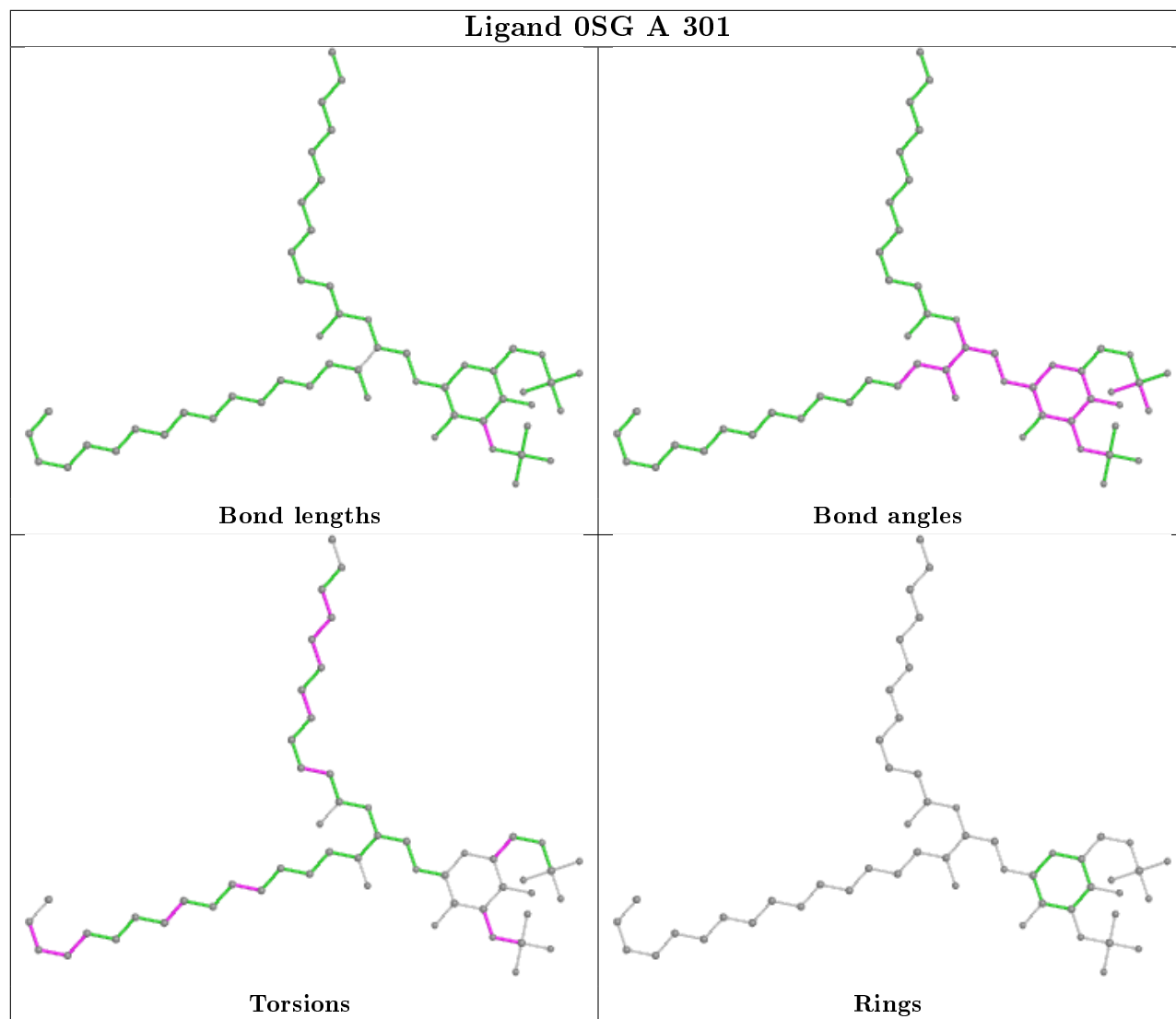
There are no ring outliers.

2 monomers are involved in 16 short contacts:

Mol	Chain	Res	Type	Clashes	Symm-Clashes
2	B	301	0SG	11	0
2	A	301	0SG	5	0

The following is a two-dimensional graphical depiction of Mogul quality analysis of bond lengths, bond angles, torsion angles, and ring geometry for all instances of the Ligand of Interest. In addition, ligands with molecular weight > 250 and outliers as shown on the validation Tables will also be included. For torsion angles, if less than 5% of the Mogul distribution of torsion angles is within 10 degrees of the torsion angle in question, then that torsion angle is considered an outlier. Any bond that is central to one or more torsion angles identified as an outlier by Mogul will be highlighted in the graph. For rings, the root-mean-square deviation (RMSD) between the ring in question and similar rings identified by Mogul is calculated over all ring torsion angles. If the average RMSD is greater than 60 degrees and the minimal RMSD between the ring in question and any Mogul-identified rings is also greater than 60 degrees, then that ring is considered an outlier. The outliers are highlighted in purple. The color gray indicates Mogul did not find sufficient equivalents in the CSD to analyse the geometry.





5.7 Other polymers [i](#)

There are no such residues in this entry.

5.8 Polymer linkage issues [i](#)

There are no chain breaks in this entry.

6 Fit of model and data [i](#)

6.1 Protein, DNA and RNA chains [i](#)

In the following table, the column labelled ‘#RSRZ> 2’ contains the number (and percentage) of RSRZ outliers, followed by percent RSRZ outliers for the chain as percentile scores relative to all X-ray entries and entries of similar resolution. The OWAB column contains the minimum, median, 95th percentile and maximum values of the occupancy-weighted average B-factor per residue. The column labelled ‘Q< 0.9’ lists the number of (and percentage) of residues with an average occupancy less than 0.9.

Mol	Chain	Analysed	<RSRZ>	#RSRZ>2	OWAB(Å ²)	Q<0.9
1	A	207/209 (99%)	-0.70	3 (1%) 75 63	19, 27, 68, 93	12 (5%)
1	B	207/209 (99%)	-0.54	5 (2%) 59 44	20, 40, 98, 116	13 (6%)
All	All	414/418 (99%)	-0.62	8 (1%) 66 53	19, 31, 87, 116	25 (6%)

All (8) RSRZ outliers are listed below:

Mol	Chain	Res	Type	RSRZ
1	B	6	GLU	3.1
1	A	168	GLY	2.7
1	B	118	GLU	2.6
1	A	5	ALA	2.3
1	A	83	ALA	2.2
1	B	3	LEU	2.2
1	B	169	GLN	2.1
1	B	119	ASN	2.0

6.2 Non-standard residues in protein, DNA, RNA chains [i](#)

There are no non-standard protein/DNA/RNA residues in this entry.

6.3 Carbohydrates [i](#)

There are no carbohydrates in this entry.

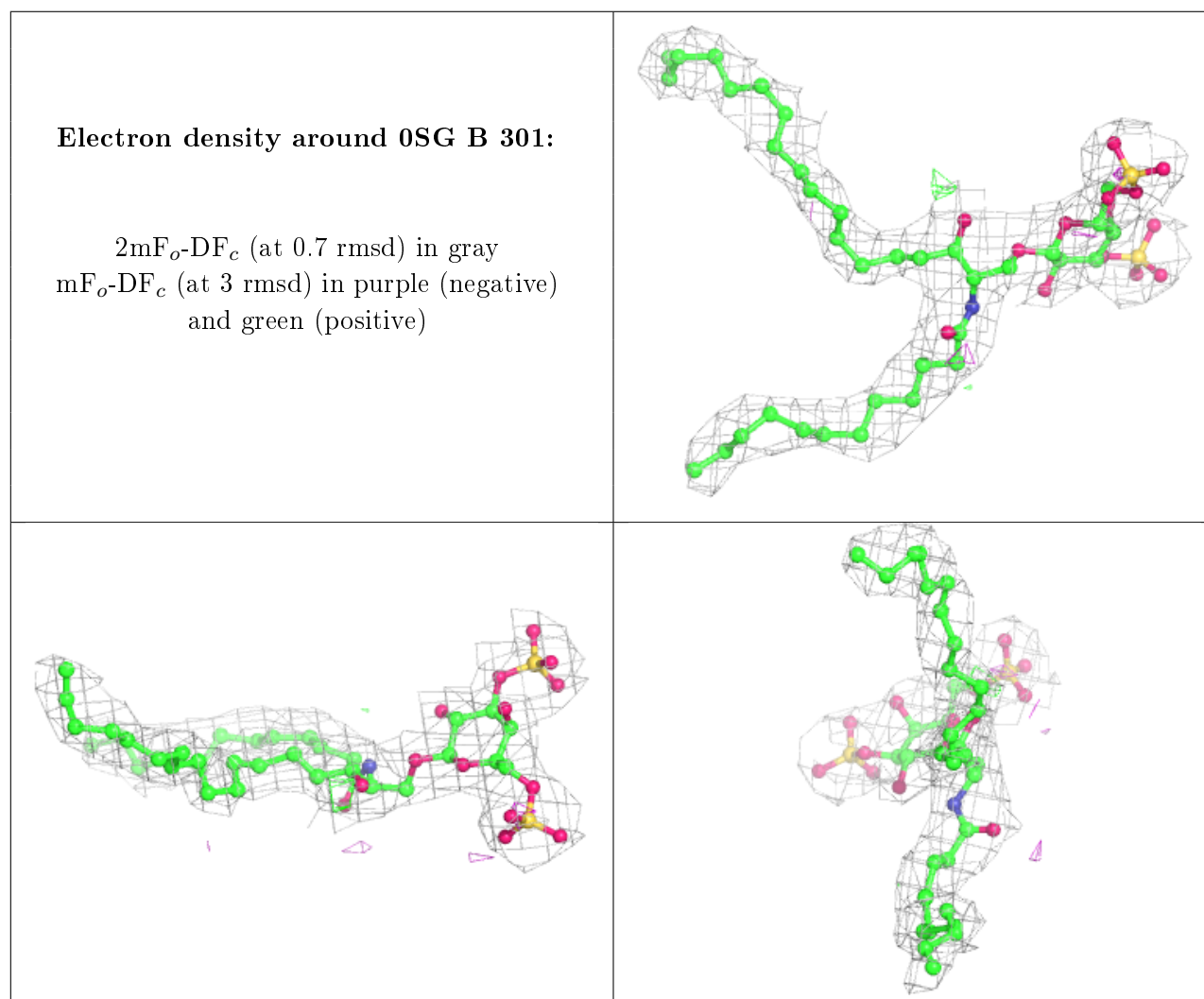
6.4 Ligands [i](#)

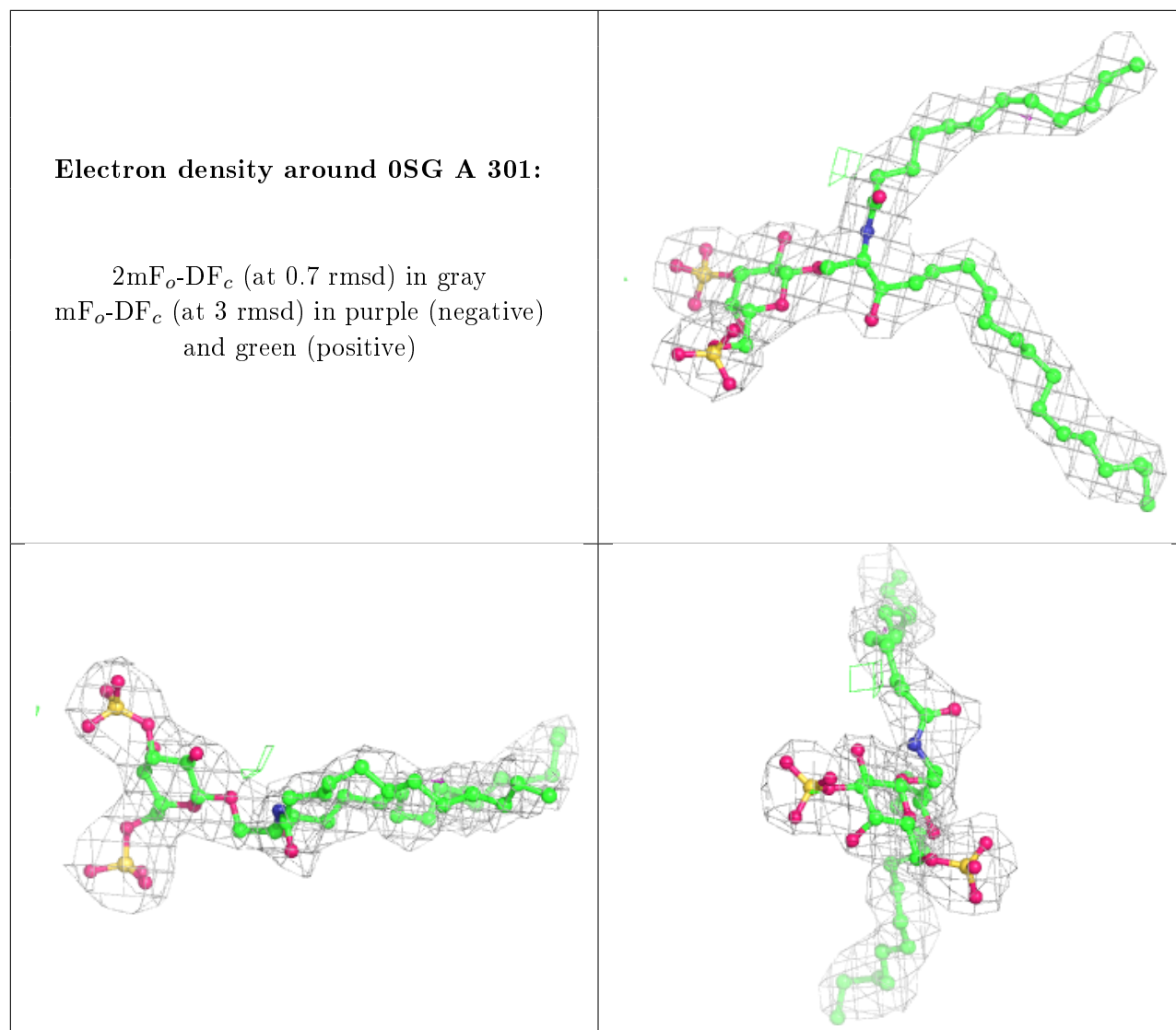
In the following table, the Atoms column lists the number of modelled atoms in the group and the number defined in the chemical component dictionary. The B-factors column lists the minimum,

median, 95th percentile and maximum values of B factors of atoms in the group. The column labelled 'Q< 0.9' lists the number of atoms with occupancy less than 0.9.

Mol	Type	Chain	Res	Atoms	RSCC	RSR	B-factors(Å ²)	Q<0.9
2	OSG	B	301	53/53	0.95	0.15	19,27,41,46	0
2	OSG	A	301	53/53	0.97	0.12	18,21,33,37	0

The following is a graphical depiction of the model fit to experimental electron density of all instances of the Ligand of Interest. In addition, ligands with molecular weight > 250 and outliers as shown on the geometry validation Tables will also be included. Each fit is shown from different orientation to approximate a three-dimensional view.





6.5 Other polymers ⓘ

There are no such residues in this entry.