



Full wwPDB X-ray Structure Validation Report ⓘ

Feb 18, 2024 – 05:51 PM EST

PDB ID : 4FOZ
Title : Crystal Structure of OccD1 (OprD) Y282R/D307H
Authors : Eren, E.; van den Berg, B.
Deposited on : 2012-06-21
Resolution : 2.40 Å(reported)

This is a Full wwPDB X-ray Structure Validation Report for a publicly released PDB entry.

We welcome your comments at validation@mail.wwpdb.org

A user guide is available at

<https://www.wwpdb.org/validation/2017/XrayValidationReportHelp>

with specific help available everywhere you see the ⓘ symbol.

The types of validation reports are described at

<http://www.wwpdb.org/validation/2017/FAQs#types>.

The following versions of software and data (see [references ⓘ](#)) were used in the production of this report:

MolProbity : 4.02b-467
Mogul : 1.8.5 (274361), CSD as541be (2020)
Xtriage (Phenix) : 1.13
EDS : 2.36
buster-report : 1.1.7 (2018)
Percentile statistics : 20191225.v01 (using entries in the PDB archive December 25th 2019)
Refmac : 5.8.0158
CCP4 : 7.0.044 (Gargrove)
Ideal geometry (proteins) : Engh & Huber (2001)
Ideal geometry (DNA, RNA) : Parkinson et al. (1996)
Validation Pipeline (wwPDB-VP) : 2.36

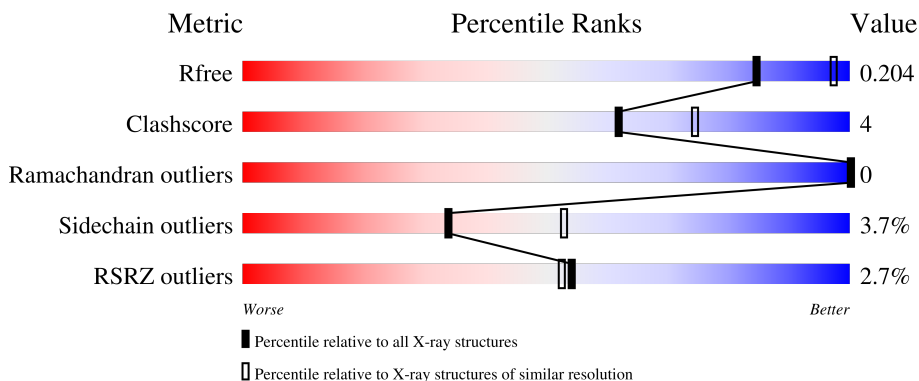
1 Overall quality at a glance

The following experimental techniques were used to determine the structure:

X-RAY DIFFRACTION


The reported resolution of this entry is 2.40 Å.

Percentile scores (ranging between 0-100) for global validation metrics of the entry are shown in the following graphic. The table shows the number of entries on which the scores are based.



Metric	Whole archive (#Entries)	Similar resolution (#Entries, resolution range(Å))
R_{free}	130704	3907 (2.40-2.40)
Clashscore	141614	4398 (2.40-2.40)
Ramachandran outliers	138981	4318 (2.40-2.40)
Sidechain outliers	138945	4319 (2.40-2.40)
RSRZ outliers	127900	3811 (2.40-2.40)

The table below summarises the geometric issues observed across the polymeric chains and their fit to the electron density. The red, orange, yellow and green segments of the lower bar indicate the fraction of residues that contain outliers for ≥ 3 , 2, 1 and 0 types of geometric quality criteria respectively. A grey segment represents the fraction of residues that are not modelled. The numeric value for each fraction is indicated below the corresponding segment, with a dot representing fractions $\leq 5\%$. The upper red bar (where present) indicates the fraction of residues that have poor fit to the electron density. The numeric value is given above the bar.

Mol	Chain	Length	Quality of chain
1	A	426	

2 Entry composition

There are 3 unique types of molecules in this entry. The entry contains 3137 atoms, of which 0 are hydrogens and 0 are deuteriums.

In the tables below, the ZeroOcc column contains the number of atoms modelled with zero occupancy, the AltConf column contains the number of residues with at least one atom in alternate conformation and the Trace column contains the number of residues modelled with at most 2 atoms.

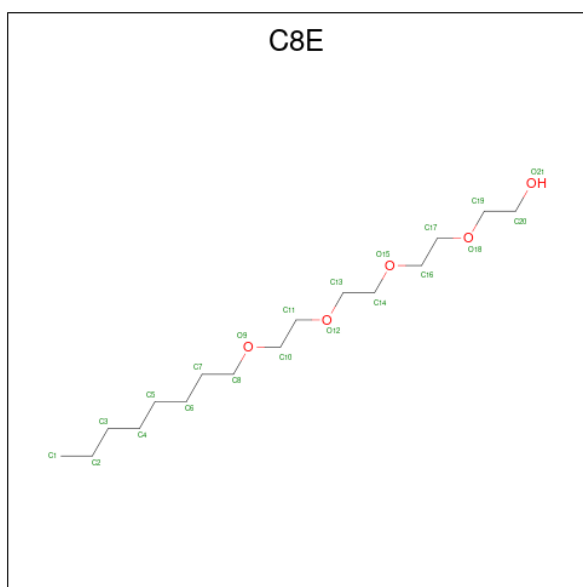
- Molecule 1 is a protein called Porin D.

Mol	Chain	Residues	Atoms					ZeroOcc	AltConf	Trace
			Total	C	N	O	S			
1	A	377	2949	1881	483	581	4	0	0	0

There are 9 discrepancies between the modelled and reference sequences:

Chain	Residue	Modelled	Actual	Comment	Reference
A	-5	HIS	-	expression tag	UNP P32722
A	-4	HIS	-	expression tag	UNP P32722
A	-3	HIS	-	expression tag	UNP P32722
A	-2	HIS	-	expression tag	UNP P32722
A	-1	HIS	-	expression tag	UNP P32722
A	0	HIS	-	expression tag	UNP P32722
A	258	VAL	ALA	cloning artifact	UNP P32722
A	282	ARG	TYR	engineered mutation	UNP P32722
A	307	HIS	ASP	engineered mutation	UNP P32722

- Molecule 2 is (HYDROXYETHYLOXY)TRI(ETHYLOXY)OCTANE (three-letter code: C8E) (formula: C₁₆H₃₄O₅).



Mol	Chain	Residues	Atoms	ZeroOcc	AltConf
2	A	1	Total C O 12 10 2	0	0
2	A	1	Total C O 13 11 2	0	0
2	A	1	Total C 7 7	0	0
2	A	1	Total C O 16 13 3	0	0
2	A	1	Total C O 13 8 5	0	0
2	A	1	Total C O 15 10 5	0	0
2	A	1	Total C O 10 7 3	0	0
2	A	1	Total C O 13 11 2	0	0
2	A	1	Total C O 11 7 4	0	0

- Molecule 3 is water.

Mol	Chain	Residues	Atoms	ZeroOcc	AltConf
3	A	78	Total O 78 78	0	0

4 Data and refinement statistics

Property	Value	Source
Space group	C 1 2 1	Depositor
Cell constants a, b, c, α , β , γ	148.46Å 104.76Å 47.35Å 90.00° 98.55° 90.00°	Depositor
Resolution (Å)	14.96 – 2.40 37.06 – 2.40	Depositor EDS
% Data completeness (in resolution range)	94.3 (14.96-2.40) 94.3 (37.06-2.40)	Depositor EDS
R_{merge}	(Not available)	Depositor
R_{sym}	0.08	Depositor
$\langle I/\sigma(I) \rangle$ ¹	1.72 (at 2.39Å)	Xtrriage
Refinement program	PHENIX 1.7.3_928	Depositor
R, R_{free}	0.197 , 0.239 0.197 , 0.204	Depositor DCC
R_{free} test set	1579 reflections (5.97%)	wwPDB-VP
Wilson B-factor (Å ²)	46.2	Xtrriage
Anisotropy	0.241	Xtrriage
Bulk solvent k_{sol} (e/Å ³), B_{sol} (Å ²)	0.33 , 50.5	EDS
L-test for twinning ²	$\langle L \rangle = 0.50$, $\langle L^2 \rangle = 0.33$	Xtrriage
Estimated twinning fraction	No twinning to report.	Xtrriage
F_o, F_c correlation	0.94	EDS
Total number of atoms	3137	wwPDB-VP
Average B, all atoms (Å ²)	48.0	wwPDB-VP

Xtrriage's analysis on translational NCS is as follows: *The largest off-origin peak in the Patterson function is 5.97% of the height of the origin peak. No significant pseudotranslation is detected.*

¹Intensities estimated from amplitudes.

²Theoretical values of $\langle |L| \rangle$, $\langle L^2 \rangle$ for acentric reflections are 0.5, 0.333 respectively for untwinned datasets, and 0.375, 0.2 for perfectly twinned datasets.

5 Model quality [i](#)

5.1 Standard geometry [i](#)

Bond lengths and bond angles in the following residue types are not validated in this section: C8E

The Z score for a bond length (or angle) is the number of standard deviations the observed value is removed from the expected value. A bond length (or angle) with $|Z| > 5$ is considered an outlier worth inspection. RMSZ is the root-mean-square of all Z scores of the bond lengths (or angles).

Mol	Chain	Bond lengths		Bond angles	
		RMSZ	# Z >5	RMSZ	# Z >5
1	A	0.43	0/3018	0.56	1/4086 (0.0%)

There are no bond length outliers.

All (1) bond angle outliers are listed below:

Mol	Chain	Res	Type	Atoms	Z	Observed(°)	Ideal(°)
1	A	47	LEU	CA-CB-CG	6.61	130.49	115.30

There are no chirality outliers.

There are no planarity outliers.

5.2 Too-close contacts [i](#)

In the following table, the Non-H and H(model) columns list the number of non-hydrogen atoms and hydrogen atoms in the chain respectively. The H(added) column lists the number of hydrogen atoms added and optimized by MolProbity. The Clashes column lists the number of clashes within the asymmetric unit, whereas Symm-Clashes lists symmetry-related clashes.

Mol	Chain	Non-H	H(model)	H(added)	Clashes	Symm-Clashes
1	A	2949	0	2724	24	0
2	A	110	0	154	8	0
3	A	78	0	0	1	0
All	All	3137	0	2878	26	0

The all-atom clashscore is defined as the number of clashes found per 1000 atoms (including hydrogen atoms). The all-atom clashscore for this structure is 4.

All (26) close contacts within the same asymmetric unit are listed below, sorted by their clash magnitude.

Atom-1	Atom-2	Interatomic distance (Å)	Clash overlap (Å)
1:A:98:SER:HB2	2:A:508:C8E:H72	1.74	0.70
1:A:69:LEU:HD22	2:A:508:C8E:H32	1.74	0.69
1:A:99:ARG:HA	2:A:508:C8E:H112	1.83	0.61
1:A:116:GLY:HA2	2:A:509:C8E:H141	1.84	0.59
1:A:419:ILE:HG22	1:A:420:LEU:HD23	1.88	0.55
1:A:266:THR:HB	1:A:321:ASP:HB2	1.90	0.54
1:A:188:GLY:HA3	1:A:202:TYR:CD2	2.44	0.53
1:A:72:LYS:HB3	1:A:95:ASP:HB3	1.93	0.49
1:A:317:GLN:HG3	1:A:339:ILE:HG13	1.94	0.49
1:A:131:ARG:HD3	1:A:133:PHE:O	2.13	0.49
1:A:297:ILE:HG13	1:A:298:PHE:H	1.78	0.47
1:A:271:TYR:HB2	2:A:501:C8E:H82	1.96	0.47
1:A:71:LEU:HD23	1:A:71:LEU:HA	1.81	0.46
1:A:86:PRO:HG2	1:A:97:TYR:CZ	2.52	0.45
1:A:297:ILE:CG1	1:A:298:PHE:H	2.30	0.44
1:A:116:GLY:CA	2:A:509:C8E:H141	2.47	0.44
1:A:384:LYS:O	1:A:385:ASP:HB2	2.18	0.44
2:A:501:C8E:H13	2:A:501:C8E:H41	1.84	0.43
1:A:297:ILE:HG13	1:A:298:PHE:N	2.34	0.42
1:A:201:LEU:HD22	1:A:201:LEU:HA	1.93	0.41
1:A:86:PRO:HG2	1:A:97:TYR:CE2	2.55	0.41
1:A:313:GLU:HG2	3:A:617:HOH:O	2.20	0.41
2:A:508:C8E:H111	2:A:508:C8E:H82	1.78	0.41
1:A:3:PHE:CD2	1:A:151:ASP:HB3	2.56	0.41
1:A:245:LYS:HE2	1:A:245:LYS:HB3	1.89	0.40
1:A:21:LEU:HD12	1:A:47:LEU:O	2.21	0.40

There are no symmetry-related clashes.

5.3 Torsion angles [i](#)

5.3.1 Protein backbone [i](#)

In the following table, the Percentiles column shows the percent Ramachandran outliers of the chain as a percentile score with respect to all X-ray entries followed by that with respect to entries of similar resolution.

The Analysed column shows the number of residues for which the backbone conformation was analysed, and the total number of residues.

Mol	Chain	Analysed	Favoured	Allowed	Outliers	Percentiles
1	A	363/426 (85%)	347 (96%)	16 (4%)	0	100 100

There are no Ramachandran outliers to report.

5.3.2 Protein sidechains [i](#)

In the following table, the Percentiles column shows the percent sidechain outliers of the chain as a percentile score with respect to all X-ray entries followed by that with respect to entries of similar resolution.

The Analysed column shows the number of residues for which the sidechain conformation was analysed, and the total number of residues.

Mol	Chain	Analysed	Rotameric	Outliers	Percentiles
1	A	295/340 (87%)	284 (96%)	11 (4%)	34 53

All (11) residues with a non-rotameric sidechain are listed below:

Mol	Chain	Res	Type
1	A	1	ASP
1	A	47	LEU
1	A	69	LEU
1	A	85	LEU
1	A	119	GLN
1	A	180	THR
1	A	201	LEU
1	A	229	LEU
1	A	367	HIS
1	A	417	LEU
1	A	420	LEU

Sometimes sidechains can be flipped to improve hydrogen bonding and reduce clashes. There are no such sidechains identified.

5.3.3 RNA [i](#)

There are no RNA molecules in this entry.

5.4 Non-standard residues in protein, DNA, RNA chains [i](#)

There are no non-standard protein/DNA/RNA residues in this entry.

5.5 Carbohydrates [i](#)

There are no monosaccharides in this entry.

5.6 Ligand geometry [i](#)

9 ligands are modelled in this entry.

In the following table, the Counts columns list the number of bonds (or angles) for which Mogul statistics could be retrieved, the number of bonds (or angles) that are observed in the model and the number of bonds (or angles) that are defined in the Chemical Component Dictionary. The Link column lists molecule types, if any, to which the group is linked. The Z score for a bond length (or angle) is the number of standard deviations the observed value is removed from the expected value. A bond length (or angle) with $|Z| > 2$ is considered an outlier worth inspection. RMSZ is the root-mean-square of all Z scores of the bond lengths (or angles).

Mol	Type	Chain	Res	Link	Bond lengths			Bond angles		
					Counts	RMSZ	# Z > 2	Counts	RMSZ	# Z > 2
2	C8E	A	505	-	12,12,20	0.45	0	11,11,19	0.18	0
2	C8E	A	504	-	15,15,20	0.41	0	14,14,19	0.32	0
2	C8E	A	503	-	6,6,20	0.32	0	5,5,19	0.34	0
2	C8E	A	502	-	11,11,20	0.43	0	9,9,19	0.36	0
2	C8E	A	507	-	9,9,20	0.49	0	8,8,19	0.33	0
2	C8E	A	508	-	12,12,20	0.40	0	11,11,19	0.43	0
2	C8E	A	509	-	10,10,20	0.50	0	9,9,19	0.45	0
2	C8E	A	501	-	11,11,20	0.38	0	10,10,19	0.25	0
2	C8E	A	506	-	13,13,20	0.38	0	10,11,19	0.39	0

In the following table, the Chirals column lists the number of chiral outliers, the number of chiral centers analysed, the number of these observed in the model and the number defined in the Chemical Component Dictionary. Similar counts are reported in the Torsion and Rings columns. '-' means no outliers of that kind were identified.

Mol	Type	Chain	Res	Link	Chirals	Torsions	Rings
2	C8E	A	505	-	-	7/10/10/18	-
2	C8E	A	504	-	-	5/13/13/18	-
2	C8E	A	503	-	-	2/4/4/18	-
2	C8E	A	502	-	-	3/7/7/18	-
2	C8E	A	507	-	-	6/7/7/18	-
2	C8E	A	508	-	-	6/10/10/18	-
2	C8E	A	509	-	-	5/8/8/18	-
2	C8E	A	501	-	-	7/9/9/18	-
2	C8E	A	506	-	-	7/9/9/18	-

There are no bond length outliers.

There are no bond angle outliers.

There are no chirality outliers.

All (48) torsion outliers are listed below:

Mol	Chain	Res	Type	Atoms
2	A	507	C8E	O12-C13-C14-O15
2	A	504	C8E	O9-C10-C11-O12
2	A	504	C8E	O12-C13-C14-O15
2	A	508	C8E	C11-C10-O9-C8
2	A	505	C8E	O18-C19-C20-O21
2	A	506	C8E	C17-C16-O15-C14
2	A	504	C8E	C6-C7-C8-O9
2	A	501	C8E	C4-C5-C6-C7
2	A	505	C8E	O9-C10-C11-O12
2	A	506	C8E	O15-C16-C17-O18
2	A	504	C8E	C4-C5-C6-C7
2	A	506	C8E	O18-C19-C20-O21
2	A	501	C8E	C5-C6-C7-C8
2	A	506	C8E	C6-C7-C8-O9
2	A	506	C8E	C7-C8-O9-C10
2	A	504	C8E	C1-C2-C3-C4
2	A	509	C8E	O15-C16-C17-O18
2	A	501	C8E	C2-C3-C4-C5
2	A	501	C8E	C1-C2-C3-C4
2	A	509	C8E	O18-C19-C20-O21
2	A	501	C8E	C3-C4-C5-C6
2	A	509	C8E	C14-C13-O12-C11
2	A	503	C8E	C2-C3-C4-C5
2	A	503	C8E	C3-C4-C5-C6
2	A	508	C8E	C7-C8-O9-C10
2	A	505	C8E	C10-C11-O12-C13
2	A	501	C8E	C7-C8-O9-C10
2	A	506	C8E	C20-C19-O18-C17
2	A	509	C8E	C17-C16-O15-C14
2	A	507	C8E	C17-C16-O15-C14
2	A	501	C8E	C6-C7-C8-O9
2	A	502	C8E	C1-C2-C3-C4
2	A	506	C8E	C13-C14-O15-C16
2	A	505	C8E	C20-C19-O18-C17
2	A	505	C8E	C13-C14-O15-C16
2	A	507	C8E	C14-C13-O12-C11
2	A	507	C8E	O15-C16-C17-O18

Continued on next page...

Continued from previous page...

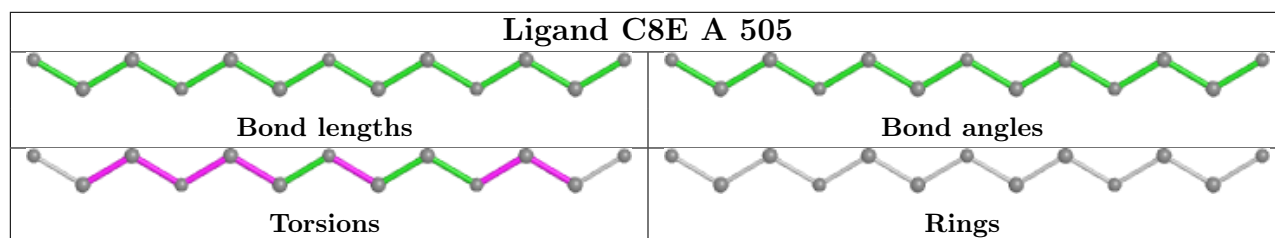
Mol	Chain	Res	Type	Atoms
2	A	508	C8E	C1-C2-C3-C4
2	A	507	C8E	C20-C19-O18-C17
2	A	502	C8E	C2-C3-C4-C5
2	A	507	C8E	C13-C14-O15-C16
2	A	508	C8E	C10-C11-O12-C13
2	A	505	C8E	C16-C17-O18-C19
2	A	505	C8E	O15-C16-C17-O18
2	A	508	C8E	O9-C10-C11-O12
2	A	502	C8E	O9-C10-C11-O12
2	A	508	C8E	C2-C3-C4-C5
2	A	509	C8E	O12-C13-C14-O15

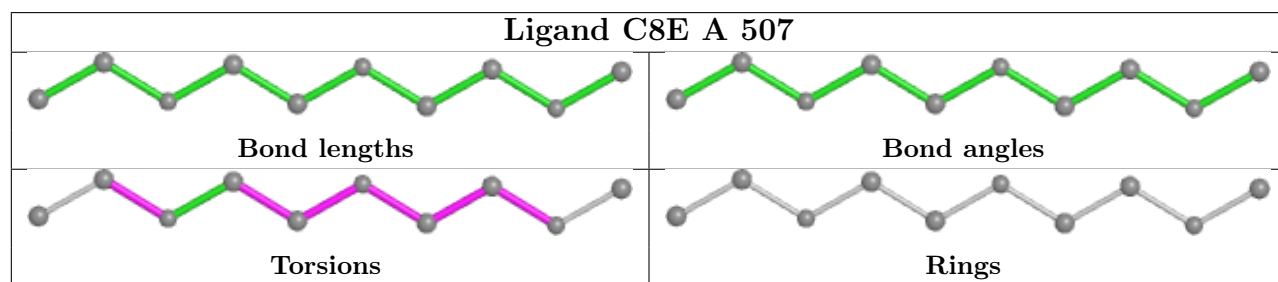
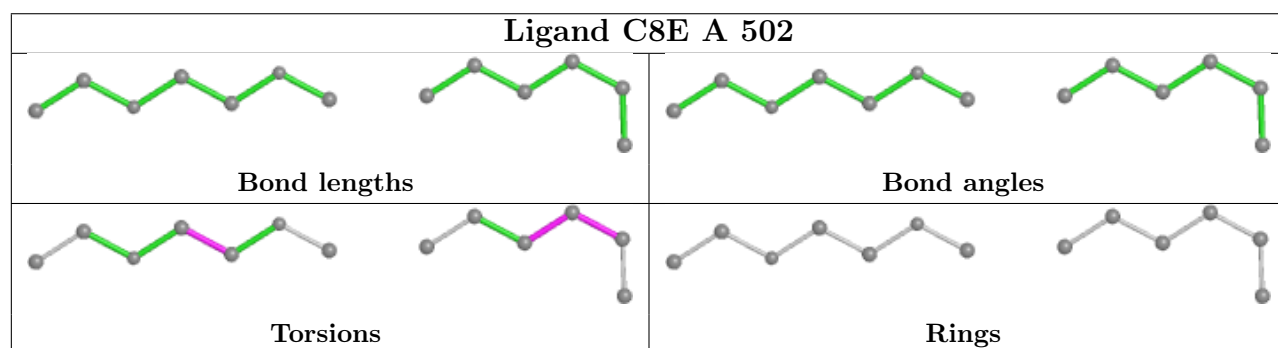
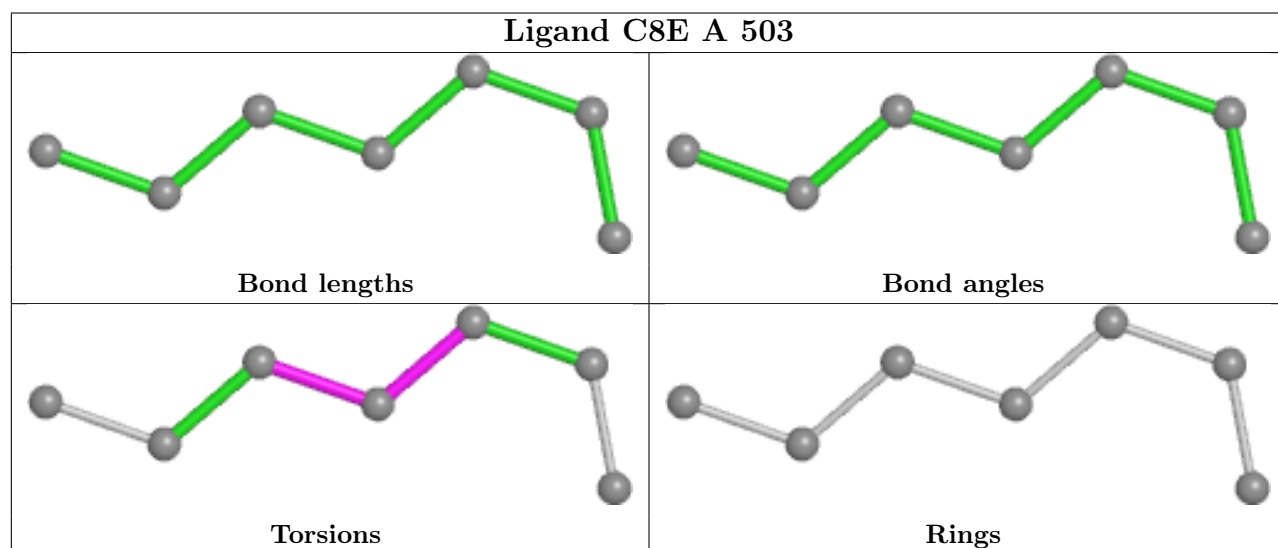
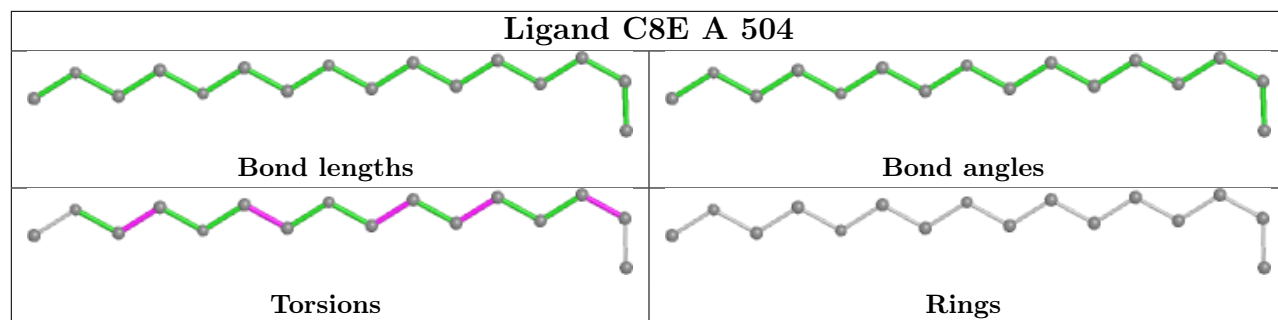
There are no ring outliers.

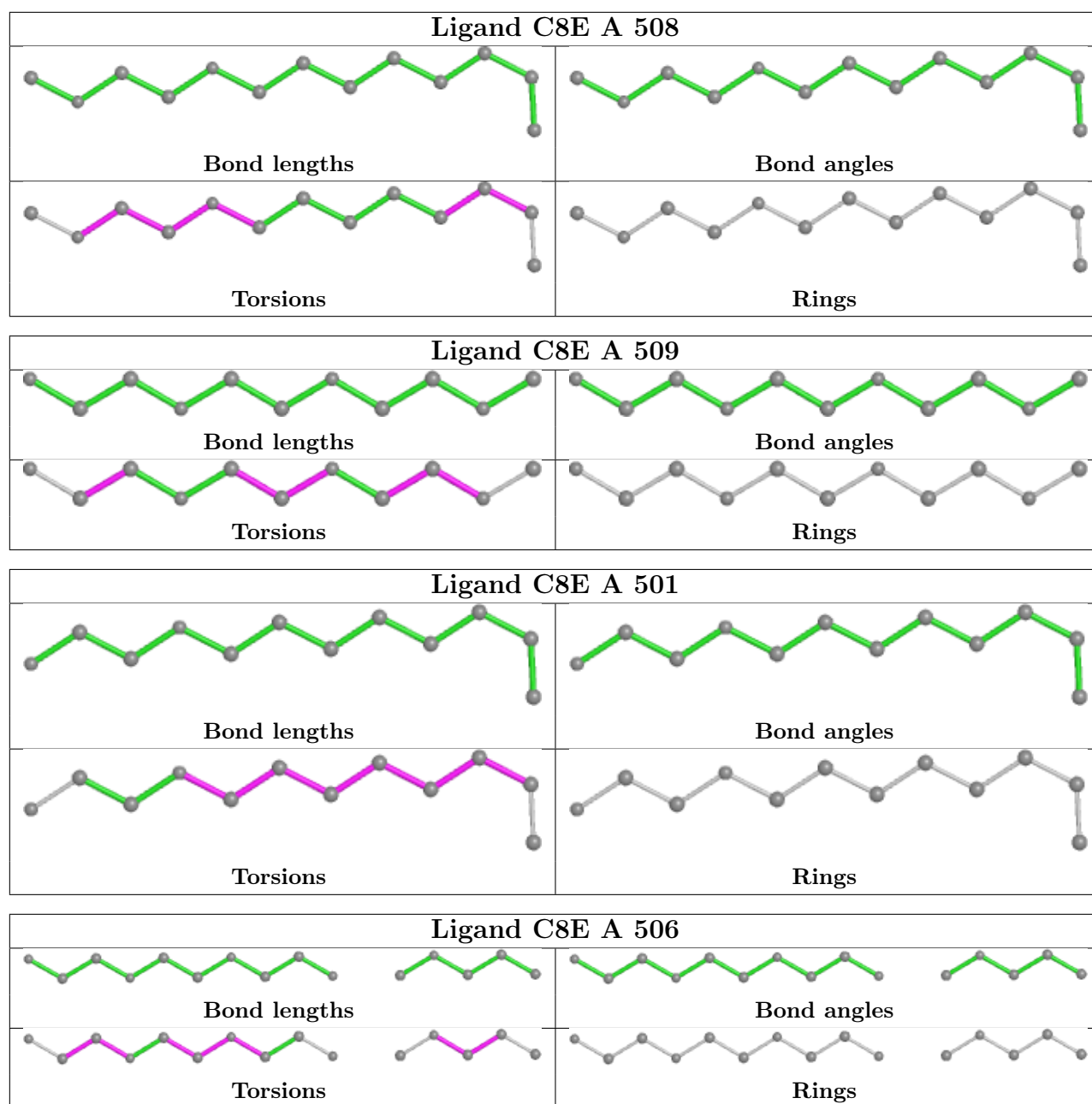
3 monomers are involved in 8 short contacts:

Mol	Chain	Res	Type	Clashes	Symm-Clashes
2	A	508	C8E	4	0
2	A	509	C8E	2	0
2	A	501	C8E	2	0

The following is a two-dimensional graphical depiction of Mogul quality analysis of bond lengths, bond angles, torsion angles, and ring geometry for all instances of the Ligand of Interest. In addition, ligands with molecular weight > 250 and outliers as shown on the validation Tables will also be included. For torsion angles, if less than 5% of the Mogul distribution of torsion angles is within 10 degrees of the torsion angle in question, then that torsion angle is considered an outlier. Any bond that is central to one or more torsion angles identified as an outlier by Mogul will be highlighted in the graph. For rings, the root-mean-square deviation (RMSD) between the ring in question and similar rings identified by Mogul is calculated over all ring torsion angles. If the average RMSD is greater than 60 degrees and the minimal RMSD between the ring in question and any Mogul-identified rings is also greater than 60 degrees, then that ring is considered an outlier. The outliers are highlighted in purple. The color gray indicates Mogul did not find sufficient equivalents in the CSD to analyse the geometry.







5.7 Other polymers [i](#)

There are no such residues in this entry.

5.8 Polymer linkage issues [i](#)

There are no chain breaks in this entry.

6 Fit of model and data [i](#)

6.1 Protein, DNA and RNA chains [i](#)

In the following table, the column labelled ‘#RSRZ> 2’ contains the number (and percentage) of RSRZ outliers, followed by percent RSRZ outliers for the chain as percentile scores relative to all X-ray entries and entries of similar resolution. The OWAB column contains the minimum, median, 95th percentile and maximum values of the occupancy-weighted average B-factor per residue. The column labelled ‘Q< 0.9’ lists the number of (and percentage) of residues with an average occupancy less than 0.9.

Mol	Chain	Analysed	<RSRZ>	#RSRZ>2	OWAB(Å ²)	Q<0.9
1	A	377/426 (88%)	0.01	10 (2%) 54 52	29, 44, 80, 98	0

All (10) RSRZ outliers are listed below:

Mol	Chain	Res	Type	RSRZ
1	A	87	VAL	6.0
1	A	297	ILE	5.9
1	A	126	ALA	5.1
1	A	86	PRO	4.4
1	A	195	ASP	2.6
1	A	381	GLY	2.4
1	A	382	PRO	2.4
1	A	420	LEU	2.2
1	A	224	ALA	2.1
1	A	400	ASP	2.1

6.2 Non-standard residues in protein, DNA, RNA chains [i](#)

There are no non-standard protein/DNA/RNA residues in this entry.

6.3 Carbohydrates [i](#)

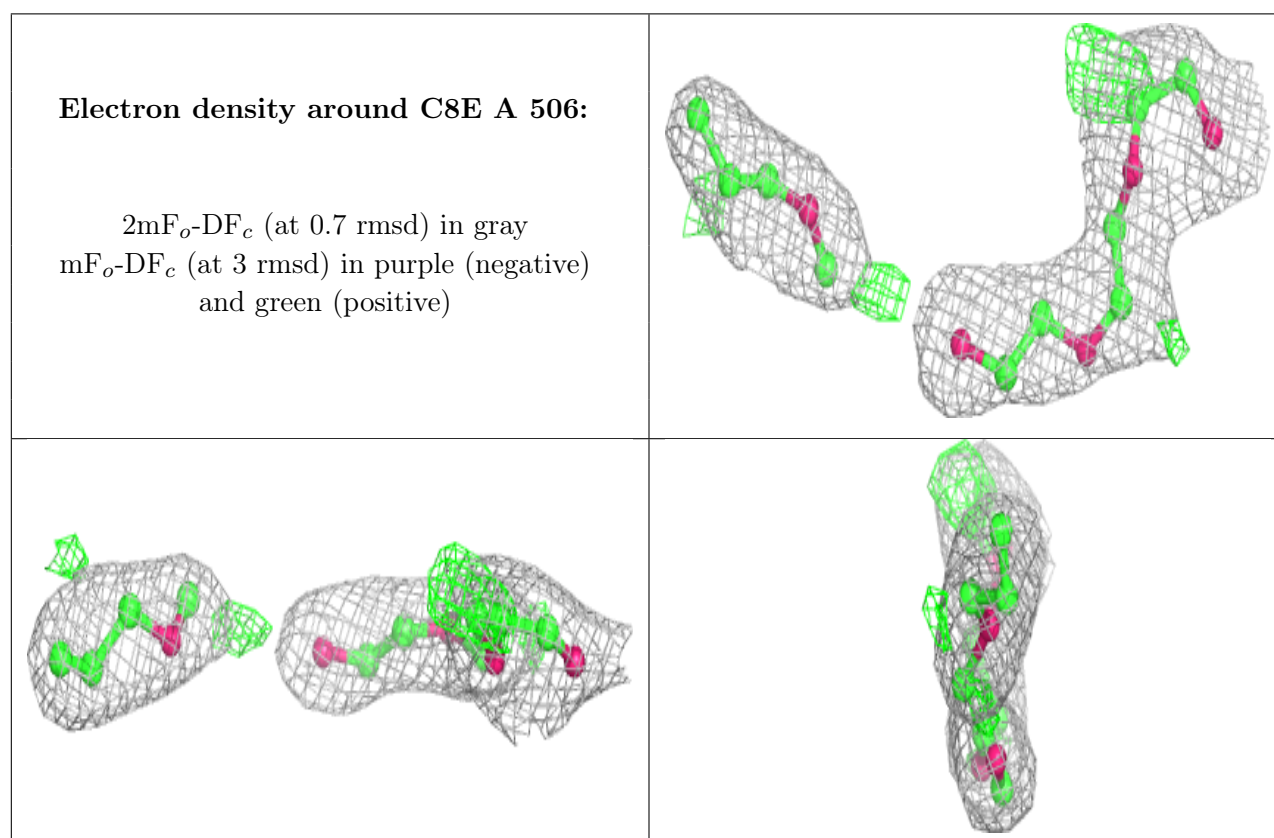
There are no monosaccharides in this entry.

6.4 Ligands [i](#)

In the following table, the Atoms column lists the number of modelled atoms in the group and the number defined in the chemical component dictionary. The B-factors column lists the minimum, median, 95th percentile and maximum values of B factors of atoms in the group. The column labelled ‘Q< 0.9’ lists the number of atoms with occupancy less than 0.9.

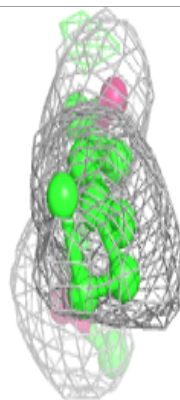
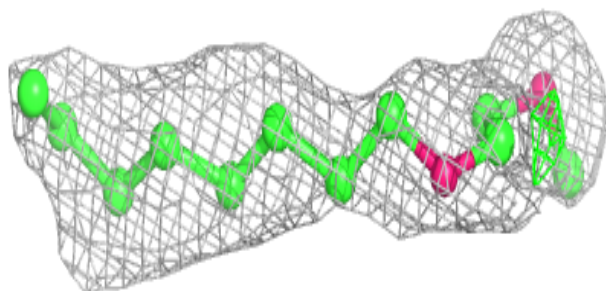
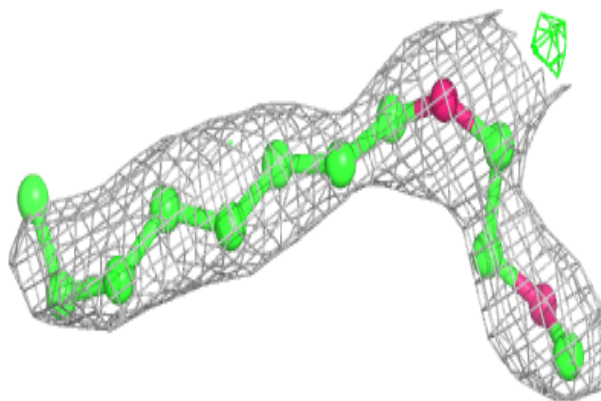
Mol	Type	Chain	Res	Atoms	RSCC	RSR	B-factors(\AA^2)	Q<0.9
2	C8E	A	506	15/21	0.73	0.21	48,82,93,95	0
2	C8E	A	508	13/21	0.74	0.28	63,73,80,81	0
2	C8E	A	504	16/21	0.79	0.23	58,72,80,81	0
2	C8E	A	501	12/21	0.81	0.24	72,77,84,84	0
2	C8E	A	505	13/21	0.83	0.24	61,84,87,87	0
2	C8E	A	507	10/21	0.84	0.22	60,65,82,84	0
2	C8E	A	502	13/21	0.85	0.16	41,68,71,72	0
2	C8E	A	509	11/21	0.85	0.18	63,69,71,73	0
2	C8E	A	503	7/21	0.90	0.21	54,60,69,70	0

The following is a graphical depiction of the model fit to experimental electron density of all instances of the Ligand of Interest. In addition, ligands with molecular weight > 250 and outliers as shown on the geometry validation Tables will also be included. Each fit is shown from different orientation to approximate a three-dimensional view.

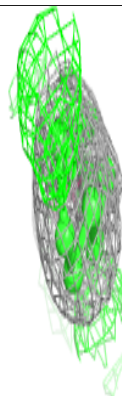
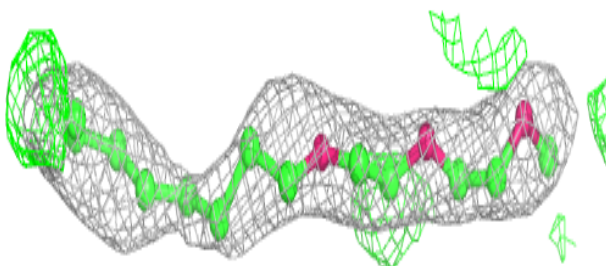
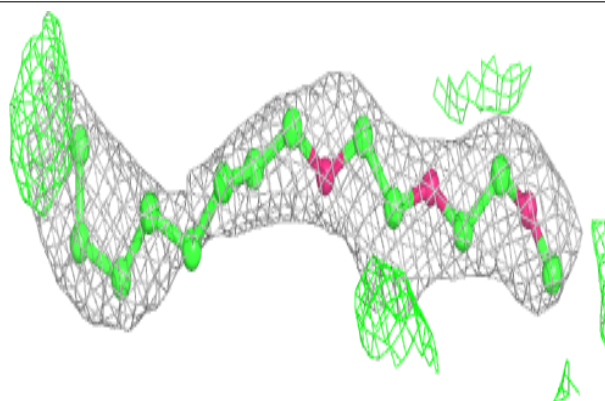


Electron density around C8E A 508:

$2mF_o-DF_c$ (at 0.7 rmsd) in gray
 mF_o-DF_c (at 3 rmsd) in purple (negative)
and green (positive)

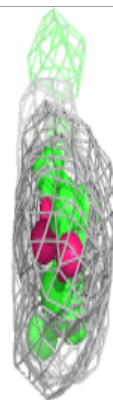
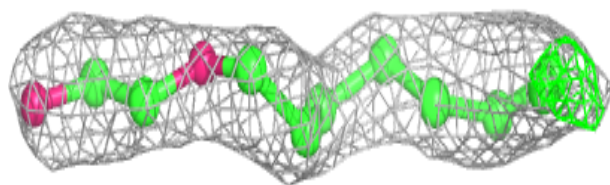
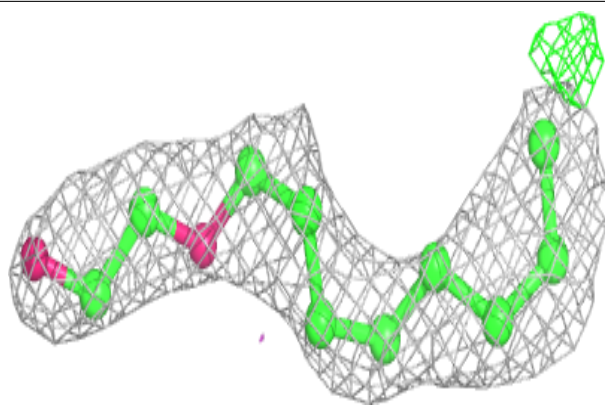
**Electron density around C8E A 504:**

$2mF_o-DF_c$ (at 0.7 rmsd) in gray
 mF_o-DF_c (at 3 rmsd) in purple (negative)
and green (positive)

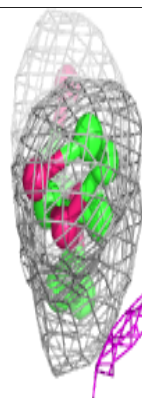
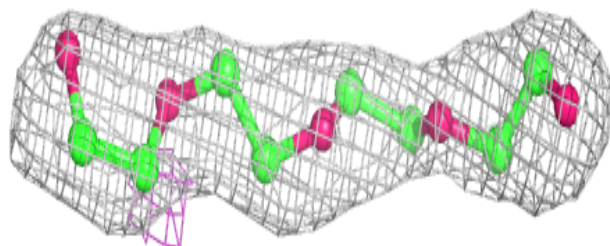
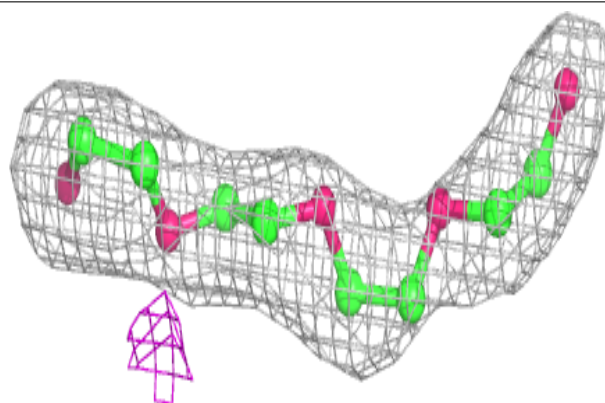


Electron density around C8E A 501:

$2mF_o-DF_c$ (at 0.7 rmsd) in gray
 mF_o-DF_c (at 3 rmsd) in purple (negative)
and green (positive)

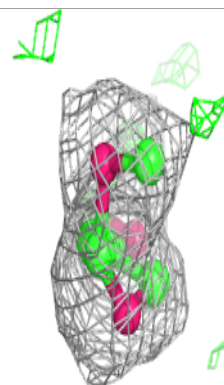
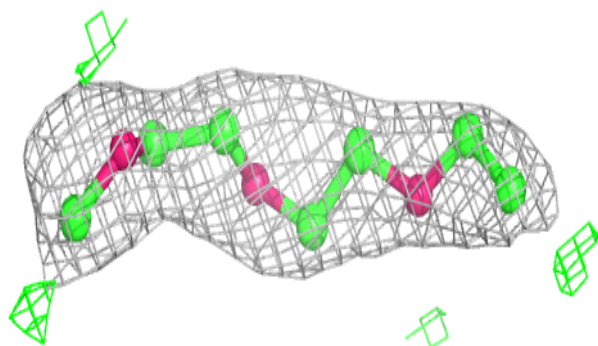
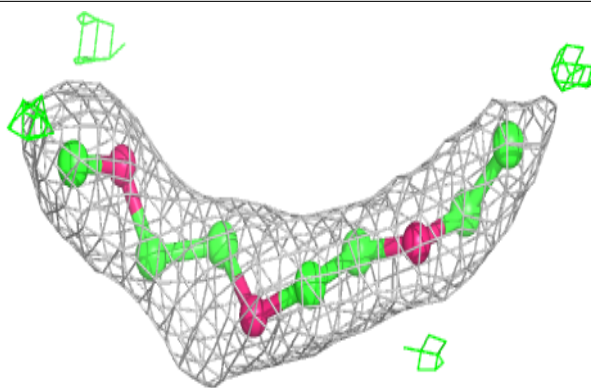
**Electron density around C8E A 505:**

$2mF_o-DF_c$ (at 0.7 rmsd) in gray
 mF_o-DF_c (at 3 rmsd) in purple (negative)
and green (positive)

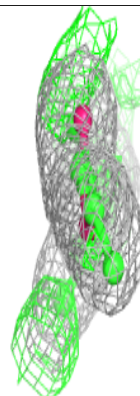
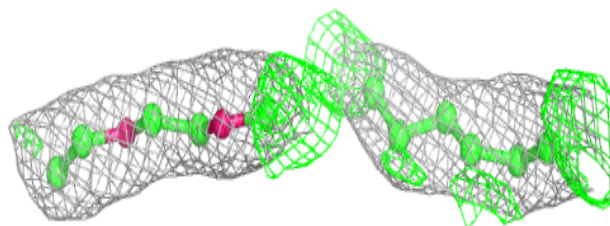
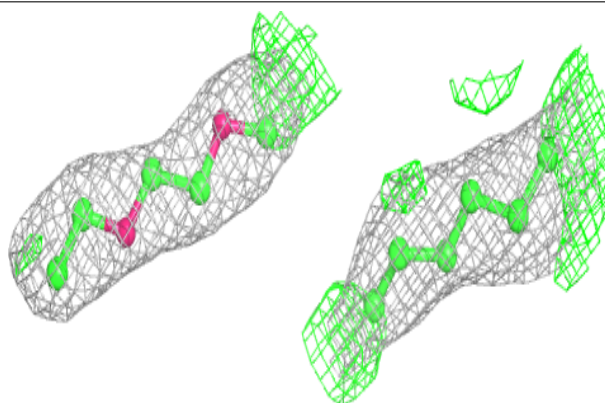


Electron density around C8E A 507:

$2mF_o-DF_c$ (at 0.7 rmsd) in gray
 mF_o-DF_c (at 3 rmsd) in purple (negative)
and green (positive)

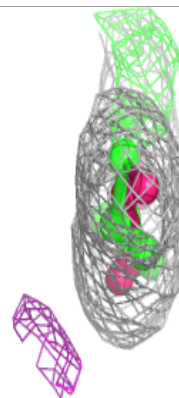
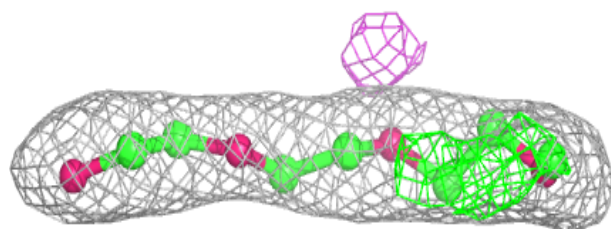
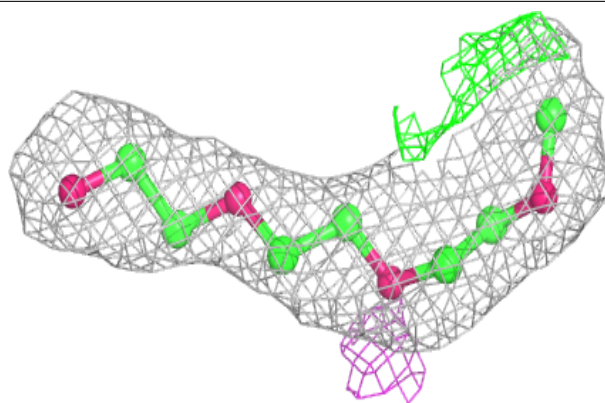
**Electron density around C8E A 502:**

$2mF_o-DF_c$ (at 0.7 rmsd) in gray
 mF_o-DF_c (at 3 rmsd) in purple (negative)
and green (positive)

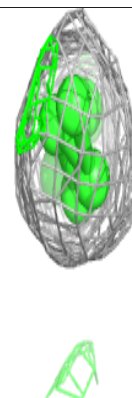
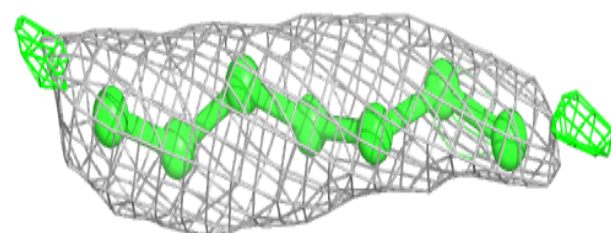
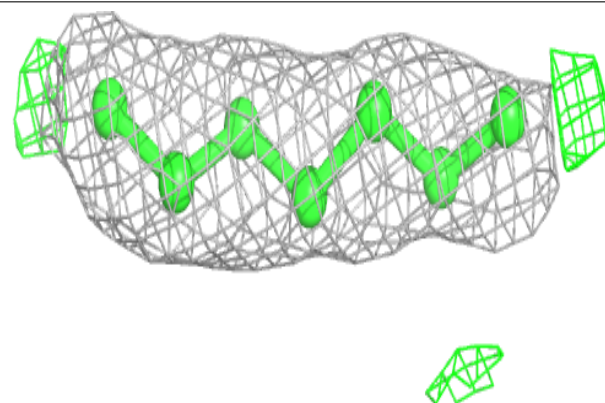


Electron density around C8E A 509:

$2mF_o-DF_c$ (at 0.7 rmsd) in gray
 mF_o-DF_c (at 3 rmsd) in purple (negative)
and green (positive)

**Electron density around C8E A 503:**

$2mF_o-DF_c$ (at 0.7 rmsd) in gray
 mF_o-DF_c (at 3 rmsd) in purple (negative)
and green (positive)



6.5 Other polymers [i](#)

There are no such residues in this entry.