



wwPDB X-ray Structure Validation Summary Report ⓘ

Sep 6, 2023 – 05:33 AM EDT

PDB ID : 4DVV
Title : Crystal structure of clade A/E 93TH057 HIV-1 gp120 core in complex with AS-I-261
Authors : Kwon, Y.D.; Kwong, P.D.
Deposited on : 2012-02-23
Resolution : 1.94 Å (reported)

This is a wwPDB X-ray Structure Validation Summary Report for a publicly released PDB entry.

We welcome your comments at validation@mail.wwpdb.org

A user guide is available at

<https://www.wwpdb.org/validation/2017/XrayValidationReportHelp>

with specific help available everywhere you see the ⓘ symbol.

The types of validation reports are described at

<http://www.wwpdb.org/validation/2017/FAQs#types>.

The following versions of software and data (see [references ⓘ](#)) were used in the production of this report:

MolProbity : 4.02b-467
Mogul : 1.8.5 (274361), CSD as541be (2020)
Xtriage (Phenix) : 1.13
EDS : 2.35
buster-report : 1.1.7 (2018)
Percentile statistics : 20191225.v01 (using entries in the PDB archive December 25th 2019)
Refmac : 5.8.0158
CCP4 : 7.0.044 (Gargrove)
Ideal geometry (proteins) : Engh & Huber (2001)
Ideal geometry (DNA, RNA) : Parkinson et al. (1996)
Validation Pipeline (wwPDB-VP) : 2.35

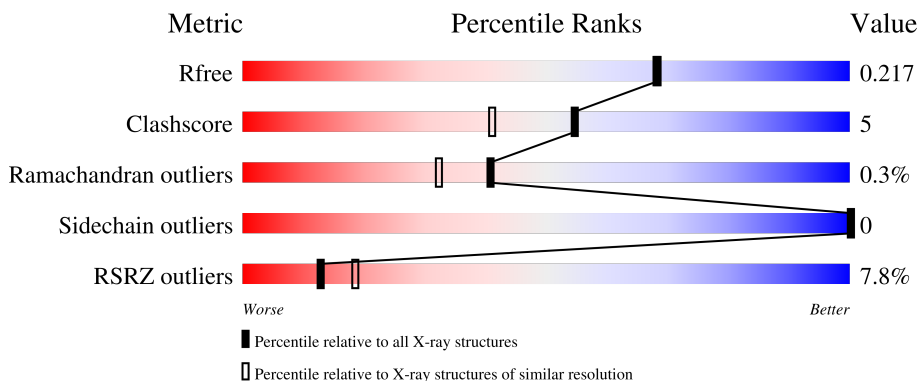
1 Overall quality at a glance

The following experimental techniques were used to determine the structure:

X-RAY DIFFRACTION

The reported resolution of this entry is 1.94 Å.

Percentile scores (ranging between 0-100) for global validation metrics of the entry are shown in the following graphic. The table shows the number of entries on which the scores are based.



Metric	Whole archive (#Entries)	Similar resolution (#Entries, resolution range(Å))
R_{free}	130704	4310 (1.96-1.92)
Clashscore	141614	1023 (1.94-1.94)
Ramachandran outliers	138981	1007 (1.94-1.94)
Sidechain outliers	138945	1007 (1.94-1.94)
RSRZ outliers	127900	4250 (1.96-1.92)

The table below summarises the geometric issues observed across the polymeric chains and their fit to the electron density. The red, orange, yellow and green segments of the lower bar indicate the fraction of residues that contain outliers for ≥ 3 , 2, 1 and 0 types of geometric quality criteria respectively. A grey segment represents the fraction of residues that are not modelled. The numeric value for each fraction is indicated below the corresponding segment, with a dot representing fractions $\leq 5\%$. The upper red bar (where present) indicates the fraction of residues that have poor fit to the electron density. The numeric value is given above the bar.

Mol	Chain	Length	Quality of chain
1	A	353	 2% 87% 9%
1	B	353	 13% 85% 11%

The following table lists non-polymeric compounds, carbohydrate monomers and non-standard residues in protein, DNA, RNA chains that are outliers for geometric or electron-density-fit criteria:

Mol	Type	Chain	Res	Chirality	Geometry	Clashes	Electron density
2	NAG	B	508	-	-	-	X
2	NAG	B	510	-	-	-	X

2 Entry composition [i](#)

There are 5 unique types of molecules in this entry. The entry contains 6072 atoms, of which 0 are hydrogens and 0 are deuteriums.

In the tables below, the ZeroOcc column contains the number of atoms modelled with zero occupancy, the AltConf column contains the number of residues with at least one atom in alternate conformation and the Trace column contains the number of residues modelled with at most 2 atoms.

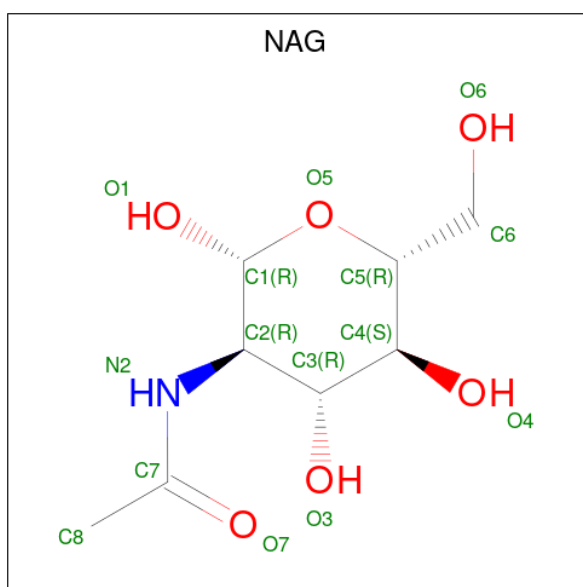
- Molecule 1 is a protein called clade A/E 93TH057 HIV-1 gp120 core.

Mol	Chain	Residues	Atoms					ZeroOcc	AltConf	Trace
			Total	C	N	O	S			
1	A	339	Total 2654	C 1666	N 460	O 507	S 21	0	0	0
1	B	339	Total 2654	C 1666	N 460	O 507	S 21	0	0	0

There are 2 discrepancies between the modelled and reference sequences:

Chain	Residue	Modelled	Actual	Comment	Reference
A	375	SER	HIS	engineered mutation	UNP A0A0M3KKW9
B	375	SER	HIS	engineered mutation	UNP A0A0M3KKW9

- Molecule 2 is 2-acetamido-2-deoxy-beta-D-glucopyranose (three-letter code: NAG) (formula: C₈H₁₅NO₆).



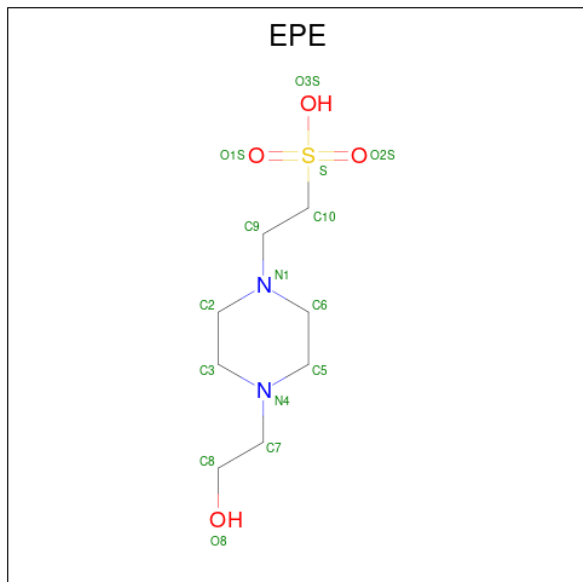
Mol	Chain	Residues	Atoms				ZeroOcc	AltConf
			Total	C	N	O		
2	A	1	Total 14	C 8	N 1	O 5	0	0

Continued on next page...

Continued from previous page...

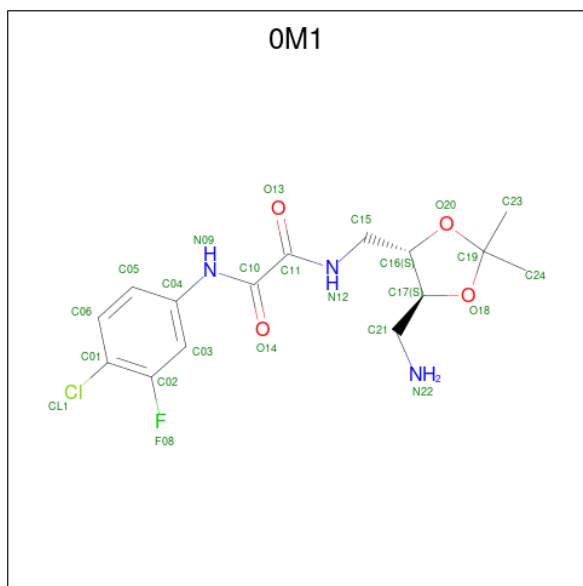
Mol	Chain	Residues	Atoms				ZeroOcc	AltConf
2	A	1	Total	C	N	O	0	0
			14	8	1	5		
2	A	1	Total	C	N	O	0	0
			14	8	1	5		
2	A	1	Total	C	N	O	0	0
			14	8	1	5		
2	A	1	Total	C	N	O	0	0
			14	8	1	5		
2	A	1	Total	C	N	O	0	0
			14	8	1	5		
2	A	1	Total	C	N	O	0	0
			14	8	1	5		
2	A	1	Total	C	N	O	0	0
			14	8	1	5		
2	A	1	Total	C	N	O	0	0
			14	8	1	5		
2	B	1	Total	C	N	O	0	0
			14	8	1	5		
2	B	1	Total	C	N	O	0	0
			14	8	1	5		
2	B	1	Total	C	N	O	0	0
			14	8	1	5		
2	B	1	Total	C	N	O	0	0
			14	8	1	5		
2	B	1	Total	C	N	O	0	0
			14	8	1	5		
2	B	1	Total	C	N	O	0	0
			14	8	1	5		
2	B	1	Total	C	N	O	0	0
			14	8	1	5		
2	B	1	Total	C	N	O	0	0
			14	8	1	5		

- Molecule 3 is 4-(2-HYDROXYETHYL)-1-PIPERAZINE ETHANESULFONIC ACID (three-letter code: EPE) (formula: C₈H₁₈N₂O₄S).



Mol	Chain	Residues	Atoms					ZeroOcc	AltConf	
			Total	C	N	O	S			
3	A	1	Total	15	8	2	4	1	0	0
3	B	1	Total	15	8	2	4	1	0	0

- Molecule 4 is N-{[(4S,5S)-5-(aminomethyl)-2,2-dimethyl-1,3-dioxolan-4-yl]methyl}-N'-(4-chloro-3-fluorophenyl)ethanediamide (three-letter code: OM1) (formula: C₁₅H₁₉ClFN₃O₄).



Mol	Chain	Residues	Atoms					ZeroOcc	AltConf	
			Total	C	Cl	F	N			O
4	A	1	24	15	1	1	3	4	0	0
4	B	1	24	15	1	1	3	4	0	0

- Molecule 5 is water.

Mol	Chain	Residues	Atoms		ZeroOcc	AltConf
5	A	255	Total	O	0	0
			255	255		
5	B	123	Total	O	0	0
			123	123		

4 Data and refinement statistics i

Property	Value	Source
Space group	P 1 21 1	Depositor
Cell constants a, b, c, α , β , γ	64.78Å 68.08Å 94.35Å 90.00° 91.42° 90.00°	Depositor
Resolution (Å)	26.39 – 1.94 46.92 – 1.94	Depositor EDS
% Data completeness (in resolution range)	95.4 (26.39-1.94) 91.7 (46.92-1.94)	Depositor EDS
R_{merge}	0.06	Depositor
R_{sym}	0.06	Depositor
$\langle I/\sigma(I) \rangle$ ¹	1.84 (at 1.94Å)	Xtrriage
Refinement program	PHENIX 1.8.1_1168	Depositor
R, R_{free}	0.181 , 0.215 0.183 , 0.217	Depositor DCC
R_{free} test set	2944 reflections (5.06%)	wwPDB-VP
Wilson B-factor (Å ²)	36.1	Xtrriage
Anisotropy	0.229	Xtrriage
Bulk solvent k_{sol} (e/Å ³), B_{sol} (Å ²)	0.35 , 53.8	EDS
L-test for twinning ²	$\langle L \rangle = 0.49$, $\langle L^2 \rangle = 0.33$	Xtrriage
Estimated twinning fraction	0.023 for h,-k,-l	Xtrriage
F_o, F_c correlation	0.96	EDS
Total number of atoms	6072	wwPDB-VP
Average B, all atoms (Å ²)	54.0	wwPDB-VP

Xtrriage's analysis on translational NCS is as follows: *The largest off-origin peak in the Patterson function is 5.47% of the height of the origin peak. No significant pseudotranslation is detected.*

¹Intensities estimated from amplitudes.

²Theoretical values of $\langle |L| \rangle$, $\langle L^2 \rangle$ for acentric reflections are 0.5, 0.333 respectively for untwinned datasets, and 0.375, 0.2 for perfectly twinned datasets.

5 Model quality

5.1 Standard geometry

Bond lengths and bond angles in the following residue types are not validated in this section: EPE, NAG, 0M1

The Z score for a bond length (or angle) is the number of standard deviations the observed value is removed from the expected value. A bond length (or angle) with $|Z| > 5$ is considered an outlier worth inspection. RMSZ is the root-mean-square of all Z scores of the bond lengths (or angles).

Mol	Chain	Bond lengths		Bond angles	
		RMSZ	# Z >5	RMSZ	# Z >5
1	A	0.25	0/2709	0.43	0/3678
1	B	0.25	0/2709	0.45	0/3678
All	All	0.25	0/5418	0.44	0/7356

There are no bond length outliers.

There are no bond angle outliers.

There are no chirality outliers.

There are no planarity outliers.

5.2 Too-close contacts

In the following table, the Non-H and H(model) columns list the number of non-hydrogen atoms and hydrogen atoms in the chain respectively. The H(added) column lists the number of hydrogen atoms added and optimized by MolProbity. The Clashes column lists the number of clashes within the asymmetric unit, whereas Symm-Clashes lists symmetry-related clashes.

Mol	Chain	Non-H	H(model)	H(added)	Clashes	Symm-Clashes
1	A	2654	0	2588	28	0
1	B	2654	0	2589	29	1
2	A	154	0	143	2	0
2	B	154	0	143	0	0
3	A	15	0	17	0	0
3	B	15	0	17	2	0
4	A	24	0	19	1	0
4	B	24	0	19	3	0
5	A	255	0	0	8	0
5	B	123	0	0	2	1
All	All	6072	0	5535	58	1

The all-atom clashscore is defined as the number of clashes found per 1000 atoms (including hydrogen atoms). The all-atom clashscore for this structure is 5.

The worst 5 of 58 close contacts within the same asymmetric unit are listed below, sorted by their clash magnitude.

Atom-1	Atom-2	Interatomic distance (Å)	Clash overlap (Å)
1:B:357:LYS:HB2	1:B:464:SER:O	1.53	1.08
1:B:357:LYS:HE3	1:B:463:THR:O	1.56	1.06
1:B:395:CYS:SG	5:B:705:HOH:O	2.26	0.92
1:A:83:GLU:OE2	5:A:725:HOH:O	1.85	0.92
1:A:219:THR:HG23	1:A:225:ILE:HG13	1.61	0.82

All (1) symmetry-related close contacts are listed below. The label for Atom-2 includes the symmetry operator and encoded unit-cell translations to be applied.

Atom-1	Atom-2	Interatomic distance (Å)	Clash overlap (Å)
1:B:202:LYS:NZ	5:B:702:HOH:O[2_545]	2.19	0.01

5.3 Torsion angles [i](#)

5.3.1 Protein backbone [i](#)

In the following table, the Percentiles column shows the percent Ramachandran outliers of the chain as a percentile score with respect to all X-ray entries followed by that with respect to entries of similar resolution.

The Analysed column shows the number of residues for which the backbone conformation was analysed, and the total number of residues.

Mol	Chain	Analysed	Favoured	Allowed	Outliers	Percentiles	
1	A	333/353 (94%)	325 (98%)	8 (2%)	0	100	100
1	B	333/353 (94%)	318 (96%)	13 (4%)	2 (1%)	25	13
All	All	666/706 (94%)	643 (96%)	21 (3%)	2 (0%)	41	32

All (2) Ramachandran outliers are listed below:

Mol	Chain	Res	Type
1	B	124	GLY
1	B	459	GLY

5.3.2 Protein sidechains [i](#)

In the following table, the Percentiles column shows the percent sidechain outliers of the chain as a percentile score with respect to all X-ray entries followed by that with respect to entries of similar resolution.

The Analysed column shows the number of residues for which the sidechain conformation was analysed, and the total number of residues.

Mol	Chain	Analysed	Rotameric	Outliers	Percentiles	
1	A	303/311 (97%)	303 (100%)	0	100	100
1	B	303/311 (97%)	303 (100%)	0	100	100
All	All	606/622 (97%)	606 (100%)	0	100	100

There are no protein residues with a non-rotameric sidechain to report.

Sometimes sidechains can be flipped to improve hydrogen bonding and reduce clashes. All (2) such sidechains are listed below:

Mol	Chain	Res	Type
1	A	114	GLN
1	B	280	ASN

5.3.3 RNA [i](#)

There are no RNA molecules in this entry.

5.4 Non-standard residues in protein, DNA, RNA chains [i](#)

There are no non-standard protein/DNA/RNA residues in this entry.

5.5 Carbohydrates [i](#)

There are no monosaccharides in this entry.

5.6 Ligand geometry [i](#)

26 ligands are modelled in this entry.

In the following table, the Counts columns list the number of bonds (or angles) for which Mogul statistics could be retrieved, the number of bonds (or angles) that are observed in the model and the number of bonds (or angles) that are defined in the Chemical Component Dictionary. The Link column lists molecule types, if any, to which the group is linked. The Z score for a bond

length (or angle) is the number of standard deviations the observed value is removed from the expected value. A bond length (or angle) with $|Z| > 2$ is considered an outlier worth inspection. RMSZ is the root-mean-square of all Z scores of the bond lengths (or angles).

Mol	Type	Chain	Res	Link	Bond lengths			Bond angles		
					Counts	RMSZ	# Z > 2	Counts	RMSZ	# Z > 2
4	OM1	B	513	-	25,25,25	1.42	3 (12%)	34,36,36	1.45	4 (11%)
2	NAG	A	508	1	14,14,15	0.65	0	17,19,21	1.07	0
2	NAG	B	510	1	14,14,15	0.56	0	17,19,21	1.56	3 (17%)
2	NAG	B	507	1	14,14,15	0.55	0	17,19,21	1.37	1 (5%)
3	EPE	B	512	-	15,15,15	0.75	1 (6%)	18,20,20	1.88	5 (27%)
2	NAG	A	502	1	14,14,15	0.47	0	17,19,21	0.76	0
2	NAG	A	510	1	14,14,15	0.42	0	17,19,21	0.92	1 (5%)
2	NAG	B	502	1	14,14,15	0.55	0	17,19,21	0.84	1 (5%)
2	NAG	B	504	1	14,14,15	0.45	0	17,19,21	0.89	0
2	NAG	A	507	1	14,14,15	0.51	0	17,19,21	1.07	1 (5%)
2	NAG	B	501	1	14,14,15	0.43	0	17,19,21	1.09	1 (5%)
2	NAG	A	505	1	14,14,15	0.52	0	17,19,21	0.89	0
2	NAG	B	505	1	14,14,15	0.53	0	17,19,21	0.87	0
2	NAG	B	503	1	14,14,15	0.45	0	17,19,21	0.91	0
2	NAG	A	511	1	14,14,15	0.50	0	17,19,21	0.65	0
2	NAG	A	501	1	14,14,15	0.50	0	17,19,21	0.96	1 (5%)
2	NAG	B	506	1	14,14,15	0.51	0	17,19,21	0.67	0
3	EPE	A	512	-	15,15,15	0.73	1 (6%)	18,20,20	1.94	7 (38%)
2	NAG	B	511	1	14,14,15	0.55	0	17,19,21	0.60	0
2	NAG	A	509	1	14,14,15	0.47	0	17,19,21	1.05	1 (5%)
2	NAG	B	508	1	14,14,15	0.55	0	17,19,21	0.68	0
2	NAG	A	504	1	14,14,15	0.53	0	17,19,21	0.72	0
2	NAG	A	506	1	14,14,15	0.47	0	17,19,21	1.02	1 (5%)
2	NAG	B	509	1	14,14,15	0.48	0	17,19,21	0.86	0
4	OM1	A	513	-	25,25,25	1.36	3 (12%)	34,36,36	1.39	3 (8%)
2	NAG	A	503	1	14,14,15	0.48	0	17,19,21	0.81	1 (5%)

In the following table, the Chirals column lists the number of chiral outliers, the number of chiral centers analysed, the number of these observed in the model and the number defined in the Chemical Component Dictionary. Similar counts are reported in the Torsion and Rings columns. '-' means no outliers of that kind were identified.

Mol	Type	Chain	Res	Link	Chirals	Torsions	Rings
4	OM1	B	513	-	-	3/15/29/29	0/2/2/2
2	NAG	A	508	1	-	2/6/23/26	0/1/1/1

Continued on next page...

Continued from previous page...

Mol	Type	Chain	Res	Link	Chirals	Torsions	Rings
2	NAG	B	510	1	-	3/6/23/26	0/1/1/1
2	NAG	B	507	1	-	3/6/23/26	0/1/1/1
3	EPE	B	512	-	-	1/9/19/19	0/1/1/1
2	NAG	A	502	1	-	0/6/23/26	0/1/1/1
2	NAG	A	510	1	-	3/6/23/26	0/1/1/1
2	NAG	B	502	1	-	3/6/23/26	0/1/1/1
2	NAG	B	504	1	-	0/6/23/26	0/1/1/1
2	NAG	A	507	1	-	0/6/23/26	0/1/1/1
2	NAG	B	501	1	-	0/6/23/26	0/1/1/1
2	NAG	A	505	1	-	0/6/23/26	0/1/1/1
2	NAG	B	505	1	-	0/6/23/26	0/1/1/1
2	NAG	B	503	1	-	0/6/23/26	0/1/1/1
2	NAG	A	511	1	-	2/6/23/26	0/1/1/1
2	NAG	A	501	1	-	2/6/23/26	0/1/1/1
2	NAG	B	506	1	-	0/6/23/26	0/1/1/1
3	EPE	A	512	-	-	0/9/19/19	0/1/1/1
2	NAG	B	511	1	-	4/6/23/26	0/1/1/1
2	NAG	A	509	1	-	0/6/23/26	0/1/1/1
2	NAG	B	508	1	-	2/6/23/26	0/1/1/1
2	NAG	A	504	1	-	0/6/23/26	0/1/1/1
2	NAG	A	506	1	-	0/6/23/26	0/1/1/1
2	NAG	B	509	1	-	0/6/23/26	0/1/1/1
4	0M1	A	513	-	-	3/15/29/29	0/2/2/2
2	NAG	A	503	1	-	0/6/23/26	0/1/1/1

The worst 5 of 8 bond length outliers are listed below:

Mol	Chain	Res	Type	Atoms	Z	Observed(Å)	Ideal(Å)
4	B	513	0M1	C11-N12	3.17	1.39	1.33
4	A	513	0M1	C11-N12	3.06	1.38	1.33
4	B	513	0M1	C21-C17	2.65	1.55	1.52
4	A	513	0M1	C21-C17	2.64	1.55	1.52
4	B	513	0M1	C10-N09	2.57	1.41	1.35

The worst 5 of 31 bond angle outliers are listed below:

Mol	Chain	Res	Type	Atoms	Z	Observed(°)	Ideal(°)
4	A	513	0M1	C10-C11-N12	4.50	118.63	113.47
3	B	512	EPE	C5-N4-C3	4.41	118.75	108.83
3	A	512	EPE	C5-N4-C3	4.17	118.20	108.83

Continued on next page...

Continued from previous page...

Mol	Chain	Res	Type	Atoms	Z	Observed(°)	Ideal(°)
4	B	513	0M1	C11-C10-N09	4.15	118.86	112.31
4	B	513	0M1	O14-C10-C11	-3.75	116.72	121.30

There are no chirality outliers.

5 of 31 torsion outliers are listed below:

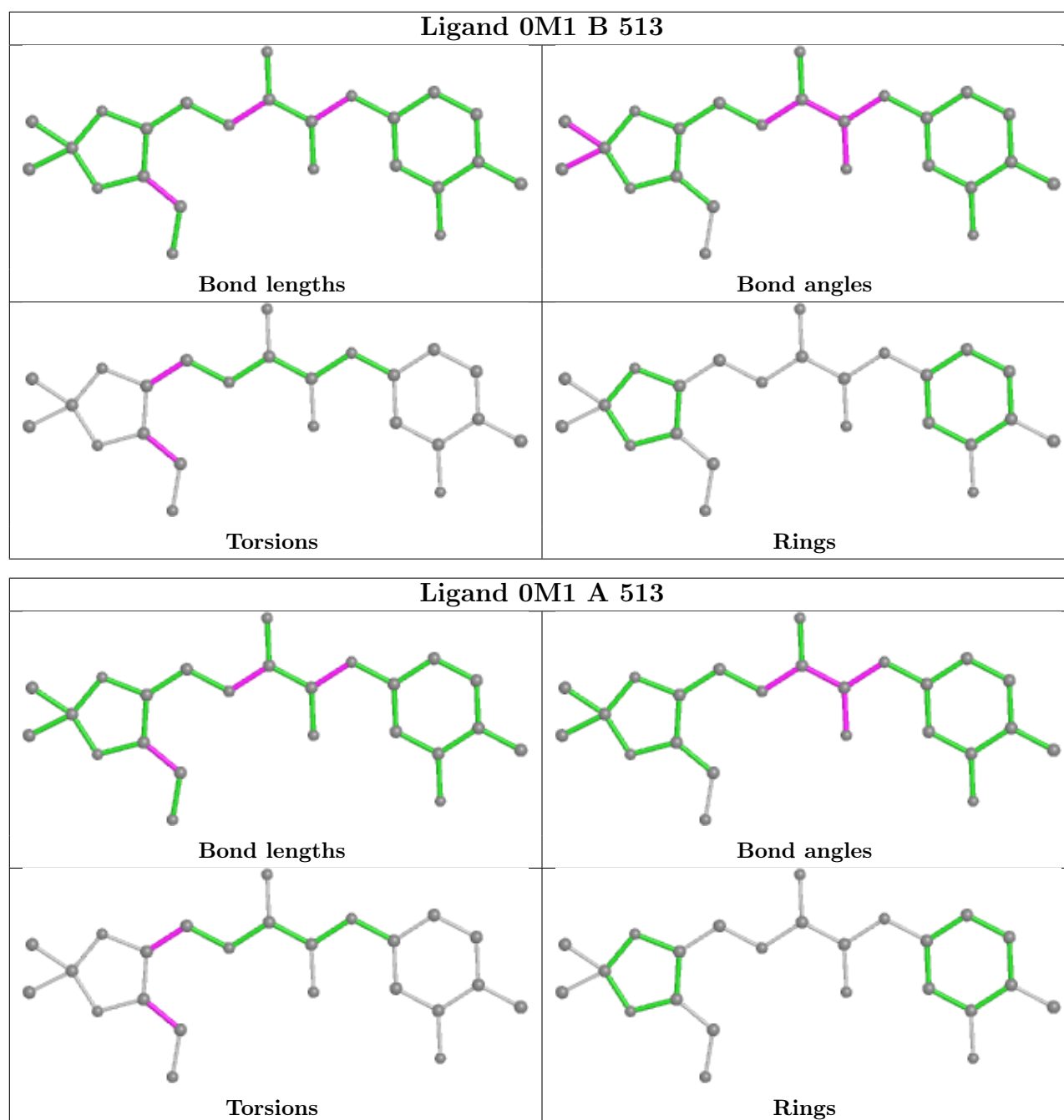
Mol	Chain	Res	Type	Atoms
2	B	511	NAG	C8-C7-N2-C2
2	B	511	NAG	O7-C7-N2-C2
4	A	513	0M1	C16-C17-C21-N22
4	A	513	0M1	O18-C17-C21-N22
4	B	513	0M1	O18-C17-C21-N22

There are no ring outliers.

5 monomers are involved in 8 short contacts:

Mol	Chain	Res	Type	Clashes	Symm-Clashes
4	B	513	0M1	3	0
2	A	508	NAG	1	0
3	B	512	EPE	2	0
2	A	510	NAG	1	0
4	A	513	0M1	1	0

The following is a two-dimensional graphical depiction of Mogul quality analysis of bond lengths, bond angles, torsion angles, and ring geometry for all instances of the Ligand of Interest. In addition, ligands with molecular weight > 250 and outliers as shown on the validation Tables will also be included. For torsion angles, if less than 5% of the Mogul distribution of torsion angles is within 10 degrees of the torsion angle in question, then that torsion angle is considered an outlier. Any bond that is central to one or more torsion angles identified as an outlier by Mogul will be highlighted in the graph. For rings, the root-mean-square deviation (RMSD) between the ring in question and similar rings identified by Mogul is calculated over all ring torsion angles. If the average RMSD is greater than 60 degrees and the minimal RMSD between the ring in question and any Mogul-identified rings is also greater than 60 degrees, then that ring is considered an outlier. The outliers are highlighted in purple. The color gray indicates Mogul did not find sufficient equivalents in the CSD to analyse the geometry.



5.7 Other polymers [\(i\)](#)

There are no such residues in this entry.

5.8 Polymer linkage issues [\(i\)](#)

There are no chain breaks in this entry.

6 Fit of model and data [i](#)

6.1 Protein, DNA and RNA chains [i](#)

In the following table, the column labelled ‘#RSRZ > 2’ contains the number (and percentage) of RSRZ outliers, followed by percent RSRZ outliers for the chain as percentile scores relative to all X-ray entries and entries of similar resolution. The OWAB column contains the minimum, median, 95th percentile and maximum values of the occupancy-weighted average B-factor per residue. The column labelled ‘Q < 0.9’ lists the number of (and percentage) of residues with an average occupancy less than 0.9.

Mol	Chain	Analysed	<RSRZ>	#RSRZ>2	OWAB(Å ²)	Q<0.9
1	A	339/353 (96%)	0.19	8 (2%) 59 66	25, 39, 81, 108	0
1	B	339/353 (96%)	0.82	45 (13%) 3 4	26, 60, 112, 149	0
All	All	678/706 (96%)	0.51	53 (7%) 13 18	25, 48, 99, 149	0

The worst 5 of 53 RSRZ outliers are listed below:

Mol	Chain	Res	Type	RSRZ
1	B	462	ASN	8.0
1	B	394	THR	7.8
1	B	44	VAL	7.3
1	B	396	ILE	6.6
1	B	461	ASN	6.4

6.2 Non-standard residues in protein, DNA, RNA chains [i](#)

There are no non-standard protein/DNA/RNA residues in this entry.

6.3 Carbohydrates [i](#)

There are no monosaccharides in this entry.

6.4 Ligands [i](#)

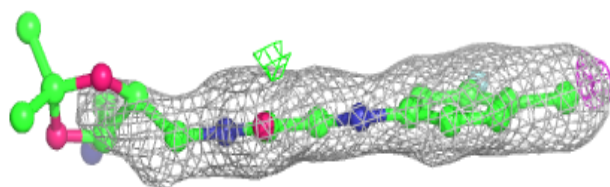
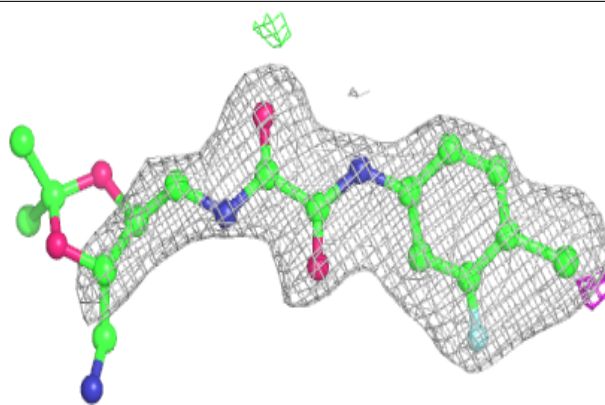
In the following table, the Atoms column lists the number of modelled atoms in the group and the number defined in the chemical component dictionary. The B-factors column lists the minimum, median, 95th percentile and maximum values of B factors of atoms in the group. The column labelled ‘Q < 0.9’ lists the number of atoms with occupancy less than 0.9.

Mol	Type	Chain	Res	Atoms	RSCC	RSR	B-factors(\AA^2)	Q<0.9
2	NAG	B	508	14/15	0.51	0.51	110,117,125,125	0
2	NAG	B	510	14/15	0.54	0.50	113,119,130,133	0
2	NAG	A	510	14/15	0.69	0.32	116,123,128,131	0
2	NAG	A	511	14/15	0.72	0.22	64,75,83,88	0
2	NAG	B	504	14/15	0.77	0.30	78,91,98,99	0
2	NAG	B	507	14/15	0.77	0.28	64,83,102,103	0
2	NAG	B	505	14/15	0.79	0.17	67,77,87,89	0
2	NAG	A	502	14/15	0.81	0.30	69,83,93,97	0
2	NAG	B	502	14/15	0.83	0.22	83,97,112,114	0
2	NAG	A	507	14/15	0.83	0.23	50,61,77,87	0
2	NAG	B	509	14/15	0.85	0.12	59,74,79,80	0
2	NAG	B	511	14/15	0.86	0.18	56,75,84,93	0
2	NAG	B	506	14/15	0.90	0.18	49,68,84,91	0
2	NAG	B	501	14/15	0.90	0.23	67,75,84,88	0
2	NAG	A	501	14/15	0.91	0.12	45,61,67,70	0
2	NAG	A	505	14/15	0.92	0.11	40,49,63,70	0
2	NAG	A	509	14/15	0.92	0.13	49,63,72,79	0
2	NAG	A	506	14/15	0.93	0.20	47,73,78,90	0
4	0M1	B	513	24/24	0.93	0.20	50,63,145,149	0
2	NAG	A	504	14/15	0.94	0.11	41,49,60,63	0
4	0M1	A	513	24/24	0.94	0.15	30,51,132,136	0
2	NAG	A	508	14/15	0.94	0.11	22,37,50,55	0
2	NAG	A	503	14/15	0.96	0.09	25,35,40,42	0
3	EPE	B	512	15/15	0.96	0.13	33,39,49,51	0
2	NAG	B	503	14/15	0.97	0.11	26,30,36,37	0
3	EPE	A	512	15/15	0.98	0.13	26,32,35,35	0

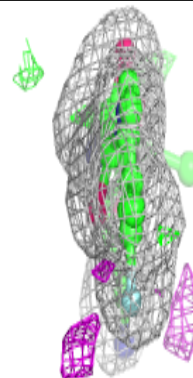
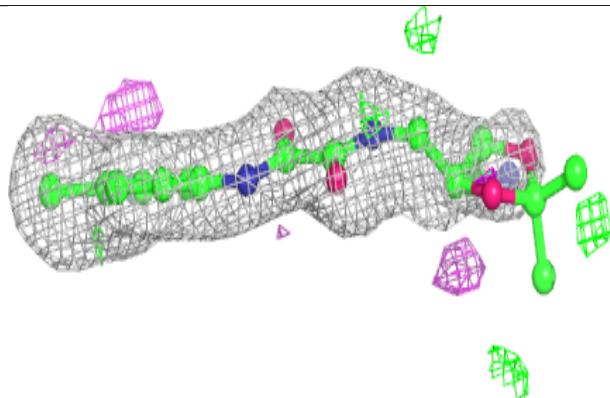
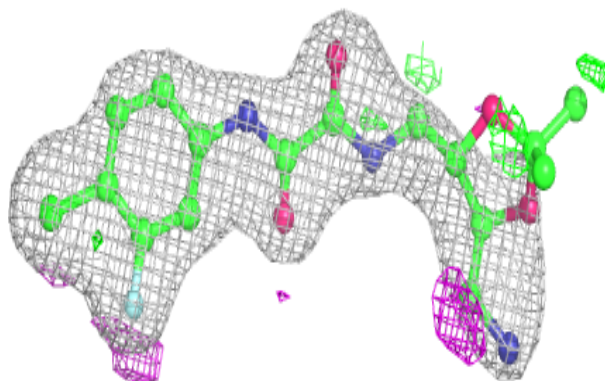
The following is a graphical depiction of the model fit to experimental electron density of all instances of the Ligand of Interest. In addition, ligands with molecular weight > 250 and outliers as shown on the geometry validation Tables will also be included. Each fit is shown from different orientation to approximate a three-dimensional view.

Electron density around 0M1 B 513:

$2mF_o-DF_c$ (at 0.7 rmsd) in gray
 mF_o-DF_c (at 3 rmsd) in purple (negative)
and green (positive)

**Electron density around 0M1 A 513:**

$2mF_o-DF_c$ (at 0.7 rmsd) in gray
 mF_o-DF_c (at 3 rmsd) in purple (negative)
and green (positive)



6.5 Other polymers

There are no such residues in this entry.