



wwPDB X-ray Structure Validation Summary Report

Dec 14, 2023 – 03:36 am GMT

PDB ID : 4CV9
Title : MPS1 kinase with 3-aminopyridin-2-one inhibitors
Authors : Fearon, D.; Bavetsias, V.; Bayliss, R.; Schmitt, J.; Westwood, I.M.; vanMontfort, R.L.M.; Jones, K.
Deposited on : 2014-03-24
Resolution : 2.50 Å (reported)

This is a wwPDB X-ray Structure Validation Summary Report for a publicly released PDB entry.

We welcome your comments at validation@mail.wwpdb.org

A user guide is available at

<https://www.wwpdb.org/validation/2017/XrayValidationReportHelp>

with specific help available everywhere you see the  symbol.

The types of validation reports are described at

<http://www.wwpdb.org/validation/2017/FAQs#types>.

The following versions of software and data (see [references](#) ) were used in the production of this report:

MolProbity : 4.02b-467
Mogul : 1.8.4, CSD as541be (2020)
Xtrriage (Phenix) : 1.13
EDS : **FAILED**
buster-report : 1.1.7 (2018)
Percentile statistics : 20191225.v01 (using entries in the PDB archive December 25th 2019)
Ideal geometry (proteins) : Engh & Huber (2001)
Ideal geometry (DNA, RNA) : Parkinson et al. (1996)
Validation Pipeline (wwPDB-VP) : 2.36

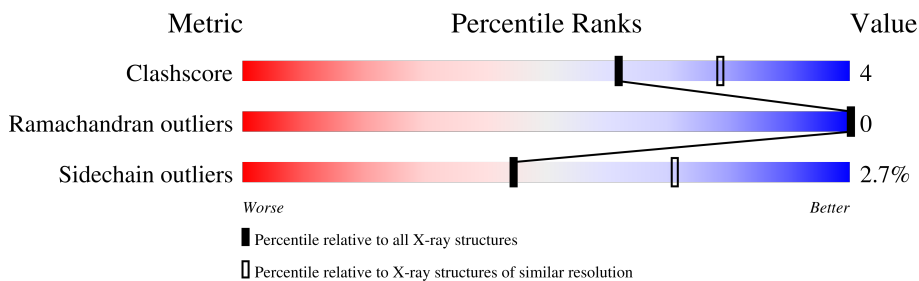
1 Overall quality at a glance

The following experimental techniques were used to determine the structure:

X-RAY DIFFRACTION

The reported resolution of this entry is 2.50 Å.

Percentile scores (ranging between 0-100) for global validation metrics of the entry are shown in the following graphic. The table shows the number of entries on which the scores are based.



Metric	Whole archive (#Entries)	Similar resolution (#Entries, resolution range(Å))
Clashscore	141614	5346 (2.50-2.50)
Ramachandran outliers	138981	5231 (2.50-2.50)
Sidechain outliers	138945	5233 (2.50-2.50)

The table below summarises the geometric issues observed across the polymeric chains and their fit to the electron density. The red, orange, yellow and green segments of the lower bar indicate the fraction of residues that contain outliers for ≥ 3 , 2, 1 and 0 types of geometric quality criteria respectively. A grey segment represents the fraction of residues that are not modelled. The numeric value for each fraction is indicated below the corresponding segment, with a dot representing fractions $\leq 5\%$.

Note EDS failed to run properly.

Mol	Chain	Length	Quality of chain
1	A	313	

2 Entry composition

There are 5 unique types of molecules in this entry. The entry contains 2027 atoms, of which 0 are hydrogens and 0 are deuteriums.

In the tables below, the ZeroOcc column contains the number of atoms modelled with zero occupancy, the AltConf column contains the number of residues with at least one atom in alternate conformation and the Trace column contains the number of residues modelled with at most 2 atoms.

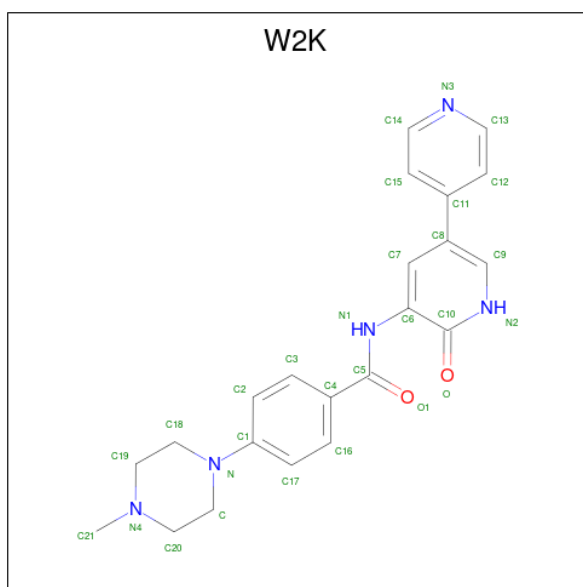
- Molecule 1 is a protein called DUAL SPECIFICITY PROTEIN KINASE TTK.

Mol	Chain	Residues	Atoms						ZeroOcc	AltConf	Trace
			Total	C	N	O	P	S			
1	A	255	1944	1252	314	365	1	12	0	0	0

There are 23 discrepancies between the modelled and reference sequences:

Chain	Residue	Modelled	Actual	Comment	Reference
A	496	MET	-	expression tag	UNP P33981
A	497	HIS	-	expression tag	UNP P33981
A	498	HIS	-	expression tag	UNP P33981
A	499	HIS	-	expression tag	UNP P33981
A	500	HIS	-	expression tag	UNP P33981
A	501	HIS	-	expression tag	UNP P33981
A	502	HIS	-	expression tag	UNP P33981
A	503	SER	-	expression tag	UNP P33981
A	504	SER	-	expression tag	UNP P33981
A	505	GLY	-	expression tag	UNP P33981
A	506	VAL	-	expression tag	UNP P33981
A	507	ASP	-	expression tag	UNP P33981
A	508	LEU	-	expression tag	UNP P33981
A	509	GLY	-	expression tag	UNP P33981
A	510	THR	-	expression tag	UNP P33981
A	511	GLU	-	expression tag	UNP P33981
A	512	ASN	-	expression tag	UNP P33981
A	513	LEU	-	expression tag	UNP P33981
A	514	TYR	-	expression tag	UNP P33981
A	515	PHE	-	expression tag	UNP P33981
A	516	GLN	-	expression tag	UNP P33981
A	517	SER	-	expression tag	UNP P33981
A	518	MET	-	expression tag	UNP P33981

- Molecule 2 is 4-(4-Methylpiperazin-1-yl)-N-(2-oxo-5-(pyridin-4-yl)-1,2-dihydropyridin-3-yl)b enzamide (three-letter code: W2K) (formula: C₂₂H₂₃N₅O₂).



Mol	Chain	Residues	Atoms				ZeroOcc	AltConf
			Total	C	N	O		
2	A	1	29	22	5	2	0	0

- Molecule 3 is 1,2-ETHANEDIOL (three-letter code: EDO) (formula: C₂H₆O₂).



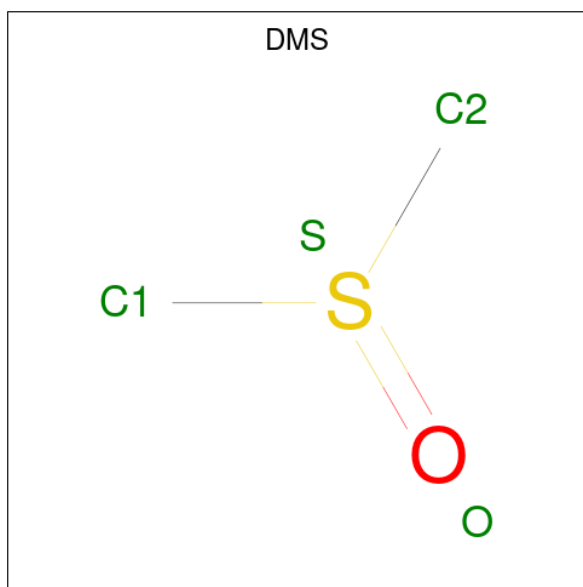
Mol	Chain	Residues	Atoms			ZeroOcc	AltConf
			Total	C	O		
3	A	1	4	2	2	0	0
3	A	1	4	2	2	0	0
3	A	1	4	2	2	0	0

Continued on next page...

Continued from previous page...

Mol	Chain	Residues	Atoms	ZeroOcc	AltConf
3	A	1	Total C O 4 2 2	0	0
3	A	1	Total C O 4 2 2	0	0

- Molecule 4 is DIMETHYL SULFOXIDE (three-letter code: DMS) (formula: C₂H₆OS).



Mol	Chain	Residues	Atoms	ZeroOcc	AltConf
4	A	1	Total C O S 4 2 1 1	0	0

- Molecule 5 is water.

Mol	Chain	Residues	Atoms	ZeroOcc	AltConf
5	A	30	Total O 30 30	0	0

4 Data and refinement statistics i

EDS failed to run properly - this section is therefore incomplete.

Property	Value	Source
Space group	I 2 2 2	Depositor
Cell constants a, b, c, α , β , γ	70.38Å 108.72Å 113.56Å 90.00° 90.00° 90.00°	Depositor
Resolution (Å)	40.94 – 2.50	Depositor
% Data completeness (in resolution range)	99.9 (40.94-2.50)	Depositor
R_{merge}	0.06	Depositor
R_{sym}	(Not available)	Depositor
$\langle I/\sigma(I) \rangle$ ¹	1.60 (at 2.51Å)	Xtrriage
Refinement program	BUSTER 2.11.4	Depositor
R, R_{free}	0.185 , 0.232	Depositor
Wilson B-factor (Å ²)	68.7	Xtrriage
Anisotropy	0.504	Xtrriage
L-test for twinning ²	$\langle L \rangle = 0.48$, $\langle L^2 \rangle = 0.31$	Xtrriage
Estimated twinning fraction	0.015 for -h,-l,-k	Xtrriage
Total number of atoms	2027	wwPDB-VP
Average B, all atoms (Å ²)	85.0	wwPDB-VP

Xtrriage's analysis on translational NCS is as follows: *The largest off-origin peak in the Patterson function is 8.79% of the height of the origin peak. No significant pseudotranslation is detected.*

¹Intensities estimated from amplitudes.

²Theoretical values of $\langle |L| \rangle$, $\langle L^2 \rangle$ for acentric reflections are 0.5, 0.333 respectively for untwinned datasets, and 0.375, 0.2 for perfectly twinned datasets.

5 Model quality [i](#)

5.1 Standard geometry [i](#)

Bond lengths and bond angles in the following residue types are not validated in this section: EDO, DMS, TPO, W2K

The Z score for a bond length (or angle) is the number of standard deviations the observed value is removed from the expected value. A bond length (or angle) with $|Z| > 5$ is considered an outlier worth inspection. RMSZ is the root-mean-square of all Z scores of the bond lengths (or angles).

Mol	Chain	Bond lengths		Bond angles	
		RMSZ	# Z >5	RMSZ	# Z >5
1	A	0.48	0/1974	0.65	0/2684

There are no bond length outliers.

There are no bond angle outliers.

There are no chirality outliers.

There are no planarity outliers.

5.2 Too-close contacts [i](#)

In the following table, the Non-H and H(model) columns list the number of non-hydrogen atoms and hydrogen atoms in the chain respectively. The H(added) column lists the number of hydrogen atoms added and optimized by MolProbity. The Clashes column lists the number of clashes within the asymmetric unit, whereas Symm-Clashes lists symmetry-related clashes.

Mol	Chain	Non-H	H(model)	H(added)	Clashes	Symm-Clashes
1	A	1944	0	1806	17	0
2	A	29	0	23	0	0
3	A	20	0	30	1	0
4	A	4	0	6	0	0
5	A	30	0	0	1	0
All	All	2027	0	1865	17	0

The all-atom clashscore is defined as the number of clashes found per 1000 atoms (including hydrogen atoms). The all-atom clashscore for this structure is 4.

The worst 5 of 17 close contacts within the same asymmetric unit are listed below, sorted by their clash magnitude.

Atom-1	Atom-2	Interatomic distance (Å)	Clash overlap (Å)
1:A:574:TYR:CD1	1:A:643:ILE:HD11	2.32	0.65
1:A:783:PRO:HG2	3:A:1799:EDO:H22	1.82	0.61
1:A:531:ILE:HD11	1:A:541:GLN:HG3	1.83	0.60
1:A:628:TRP:HA	1:A:631:MET:HE3	1.86	0.58
1:A:789:PRO:HB3	1:A:793:ILE:HD12	1.86	0.57

There are no symmetry-related clashes.

5.3 Torsion angles [i](#)

5.3.1 Protein backbone [i](#)

In the following table, the Percentiles column shows the percent Ramachandran outliers of the chain as a percentile score with respect to all X-ray entries followed by that with respect to entries of similar resolution.

The Analysed column shows the number of residues for which the backbone conformation was analysed, and the total number of residues.

Mol	Chain	Analysed	Favoured	Allowed	Outliers	Percentiles
1	A	189/313 (60%)	179 (95%)	10 (5%)	0	100 100

There are no Ramachandran outliers to report.

5.3.2 Protein sidechains [i](#)

In the following table, the Percentiles column shows the percent sidechain outliers of the chain as a percentile score with respect to all X-ray entries followed by that with respect to entries of similar resolution.

The Analysed column shows the number of residues for which the sidechain conformation was analysed, and the total number of residues.

Mol	Chain	Analysed	Rotameric	Outliers	Percentiles
1	A	149/287 (52%)	145 (97%)	4 (3%)	44 71

All (4) residues with a non-rotameric sidechain are listed below:

Mol	Chain	Res	Type
1	A	518	MET
1	A	590	ASP

Continued on next page...

Continued from previous page...

Mol	Chain	Res	Type
1	A	606	ASN
1	A	649	LYS

Sometimes sidechains can be flipped to improve hydrogen bonding and reduce clashes. There are no such sidechains identified.

5.3.3 RNA [i](#)

There are no RNA molecules in this entry.

5.4 Non-standard residues in protein, DNA, RNA chains [i](#)

1 non-standard protein/DNA/RNA residue is modelled in this entry.

In the following table, the Counts columns list the number of bonds (or angles) for which Mogul statistics could be retrieved, the number of bonds (or angles) that are observed in the model and the number of bonds (or angles) that are defined in the Chemical Component Dictionary. The Link column lists molecule types, if any, to which the group is linked. The Z score for a bond length (or angle) is the number of standard deviations the observed value is removed from the expected value. A bond length (or angle) with $|Z| > 2$ is considered an outlier worth inspection. RMSZ is the root-mean-square of all Z scores of the bond lengths (or angles).

Mol	Type	Chain	Res	Link	Bond lengths			Bond angles		
					Counts	RMSZ	# Z > 2	Counts	RMSZ	# Z > 2
1	TPO	A	686	1	8,10,11	1.10	0	10,14,16	1.46	2 (20%)

In the following table, the Chirals column lists the number of chiral outliers, the number of chiral centers analysed, the number of these observed in the model and the number defined in the Chemical Component Dictionary. Similar counts are reported in the Torsion and Rings columns. '-' means no outliers of that kind were identified.

Mol	Type	Chain	Res	Link	Chirals	Torsions	Rings
1	TPO	A	686	1	-	3/9/11/13	-

There are no bond length outliers.

All (2) bond angle outliers are listed below:

Mol	Chain	Res	Type	Atoms	Z	Observed(°)	Ideal(°)
1	A	686	TPO	CG2-CB-CA	2.56	118.21	113.16
1	A	686	TPO	O3P-P-OG1	2.28	116.19	105.99

There are no chirality outliers.

All (3) torsion outliers are listed below:

Mol	Chain	Res	Type	Atoms
1	A	686	TPO	N-CA-CB-OG1
1	A	686	TPO	CB-OG1-P-O1P
1	A	686	TPO	O-C-CA-CB

There are no ring outliers.

No monomer is involved in short contacts.

5.5 Carbohydrates [i](#)

There are no monosaccharides in this entry.

5.6 Ligand geometry [i](#)

7 ligands are modelled in this entry.

In the following table, the Counts columns list the number of bonds (or angles) for which Mogul statistics could be retrieved, the number of bonds (or angles) that are observed in the model and the number of bonds (or angles) that are defined in the Chemical Component Dictionary. The Link column lists molecule types, if any, to which the group is linked. The Z score for a bond length (or angle) is the number of standard deviations the observed value is removed from the expected value. A bond length (or angle) with $|Z| > 2$ is considered an outlier worth inspection. RMSZ is the root-mean-square of all Z scores of the bond lengths (or angles).

Mol	Type	Chain	Res	Link	Bond lengths			Bond angles		
					Counts	RMSZ	# Z > 2	Counts	RMSZ	# Z > 2
3	EDO	A	1796	-	3,3,3	0.67	0	2,2,2	0.25	0
3	EDO	A	1797	-	3,3,3	0.82	0	2,2,2	0.30	0
3	EDO	A	1800	-	3,3,3	0.67	0	2,2,2	0.14	0
3	EDO	A	1798	-	3,3,3	0.62	0	2,2,2	0.32	0
3	EDO	A	1799	-	3,3,3	0.71	0	2,2,2	0.12	0
2	W2K	A	1795	-	32,32,32	1.63	7 (21%)	43,44,44	1.23	4 (9%)
4	DMS	A	1801	-	3,3,3	0.33	0	3,3,3	0.37	0

In the following table, the Chirals column lists the number of chiral outliers, the number of chiral centers analysed, the number of these observed in the model and the number defined in the Chemical Component Dictionary. Similar counts are reported in the Torsion and Rings columns. '-' means no outliers of that kind were identified.

Mol	Type	Chain	Res	Link	Chirals	Torsions	Rings
3	EDO	A	1796	-	-	0/1/1/1	-
3	EDO	A	1797	-	-	0/1/1/1	-
3	EDO	A	1800	-	-	0/1/1/1	-
3	EDO	A	1798	-	-	0/1/1/1	-
3	EDO	A	1799	-	-	1/1/1/1	-
2	W2K	A	1795	-	-	0/16/26/26	0/4/4/4

The worst 5 of 7 bond length outliers are listed below:

Mol	Chain	Res	Type	Atoms	Z	Observed(Å)	Ideal(Å)
2	A	1795	W2K	C5-N1	3.64	1.44	1.37
2	A	1795	W2K	C17-C1	3.56	1.46	1.39
2	A	1795	W2K	C1-N	2.68	1.46	1.38
2	A	1795	W2K	C9-N2	2.35	1.40	1.36
2	A	1795	W2K	C15-C11	2.34	1.43	1.39

All (4) bond angle outliers are listed below:

Mol	Chain	Res	Type	Atoms	Z	Observed(°)	Ideal(°)
2	A	1795	W2K	C2-C1-N	-4.03	115.83	121.38
2	A	1795	W2K	C17-C1-N	3.49	126.19	121.38
2	A	1795	W2K	C-N-C18	3.02	118.18	111.52
2	A	1795	W2K	C9-N2-C10	-2.11	122.18	124.46

There are no chirality outliers.

All (1) torsion outliers are listed below:

Mol	Chain	Res	Type	Atoms
3	A	1799	EDO	O1-C1-C2-O2

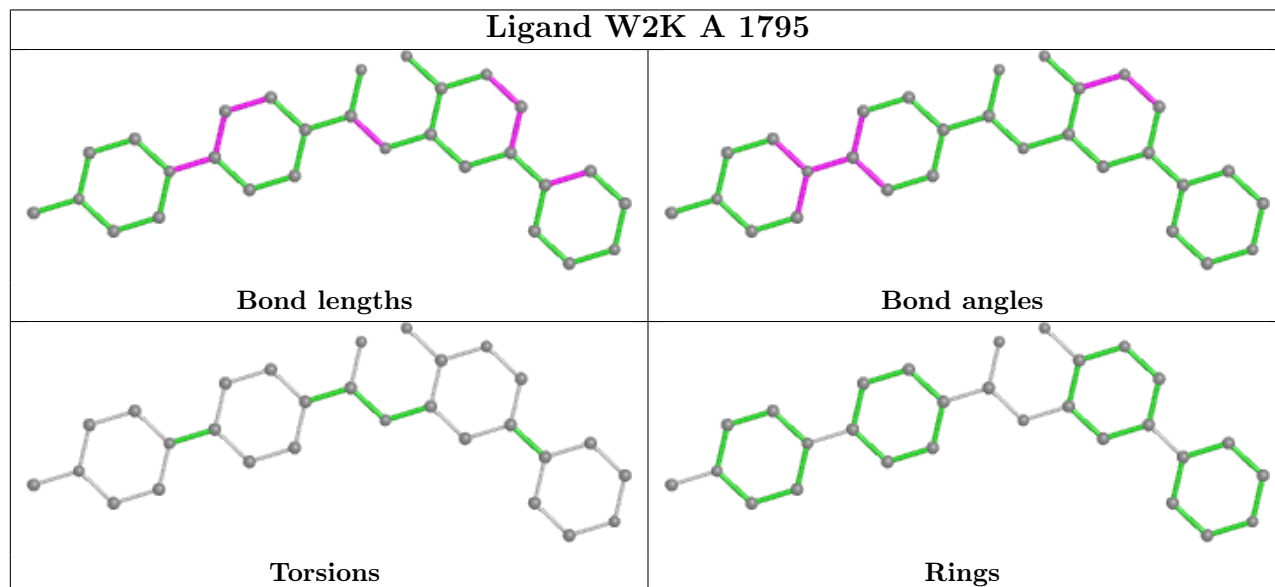
There are no ring outliers.

1 monomer is involved in 1 short contact:

Mol	Chain	Res	Type	Clashes	Symm-Clashes
3	A	1799	EDO	1	0

The following is a two-dimensional graphical depiction of Mogul quality analysis of bond lengths, bond angles, torsion angles, and ring geometry for all instances of the Ligand of Interest. In addition, ligands with molecular weight > 250 and outliers as shown on the validation Tables will also be included. For torsion angles, if less than 5% of the Mogul distribution of torsion angles is within 10 degrees of the torsion angle in question, then that torsion angle is considered an outlier. Any bond that is central to one or more torsion angles identified as an outlier by Mogul will be

highlighted in the graph. For rings, the root-mean-square deviation (RMSD) between the ring in question and similar rings identified by Mogul is calculated over all ring torsion angles. If the average RMSD is greater than 60 degrees and the minimal RMSD between the ring in question and any Mogul-identified rings is also greater than 60 degrees, then that ring is considered an outlier. The outliers are highlighted in purple. The color gray indicates Mogul did not find sufficient equivalents in the CSD to analyse the geometry.



5.7 Other polymers [i](#)

There are no such residues in this entry.

5.8 Polymer linkage issues [i](#)

There are no chain breaks in this entry.

6 Fit of model and data

6.1 Protein, DNA and RNA chains

EDS failed to run properly - this section is therefore empty.

6.2 Non-standard residues in protein, DNA, RNA chains

EDS failed to run properly - this section is therefore empty.

6.3 Carbohydrates

EDS failed to run properly - this section is therefore empty.

6.4 Ligands

EDS failed to run properly - this section is therefore empty.

6.5 Other polymers

EDS failed to run properly - this section is therefore empty.