



Full wwPDB Geometry-Only Validation Report ⓘ

May 23, 2024 – 02:32 PM EDT

PDB ID : 4BD1
Title : Neutron structure of a perdeuterated Toho-1 R274N R276N double mutant Beta-lactamase in complex with a fully deuterated boronic acid (BZB)
Authors : Tomanicek, S.J.; Weiss, K.L.; Standaert, R.F.; Ostermann, A.; Schrader, T.E.; Ng, J.D.; Coates, L.
Deposited on : 2012-10-04
Resolution : 2.00 Å(reported)

This is a Full wwPDB Geometry-Only Validation Report for a publicly released PDB entry.

We welcome your comments at validation@mail.wwpdb.org

A user guide is available at

<https://www.wwpdb.org/validation/2017/XrayValidationReportHelp>

with specific help available everywhere you see the ⓘ symbol.

The types of validation reports are described at

<http://www.wwpdb.org/validation/2017/FAQs#types>.

The following versions of software and data (see [references ⓘ](#)) were used in the production of this report:

MolProbity : 4.02b-467
Mogul : 1.8.5 (274361), CSD as541be (2020)
Percentile statistics : 20191225.v01 (using entries in the PDB archive December 25th 2019)
Ideal geometry (proteins) : Engh & Huber (2001)
Ideal geometry (DNA, RNA) : Parkinson et al. (1996)
Validation Pipeline (wwPDB-VP) : 2.36.2

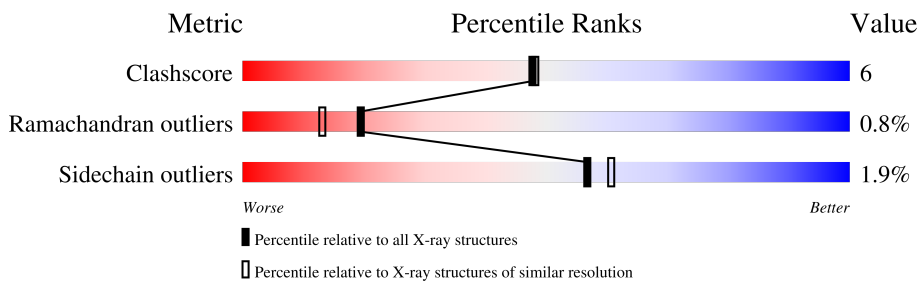
1 Overall quality at a glance

The following experimental techniques were used to determine the structure:

NEUTRON DIFFRACTION

The reported resolution of this entry is 2.00 Å.

Percentile scores (ranging between 0-100) for global validation metrics of the entry are shown in the following graphic. The table shows the number of entries on which the scores are based.



Metric	Whole archive (#Entries)	Similar resolution (#Entries, resolution range(Å))
Clashscore	141614	9178 (2.00-2.00)
Ramachandran outliers	138981	9054 (2.00-2.00)
Sidechain outliers	138945	9053 (2.00-2.00)

The table below summarises the geometric issues observed across the polymeric chains and their fit to the electron density. The red, orange, yellow and green segments of the lower bar indicate the fraction of residues that contain outliers for ≥ 3 , 2, 1 and 0 types of geometric quality criteria respectively. A grey segment represents the fraction of residues that are not modelled. The numeric value for each fraction is indicated below the corresponding segment, with a dot representing fractions $\leq 5\%$.

Note EDS was not executed.

Mol	Chain	Length	Quality of chain
1	A	261	

The following table lists non-polymeric compounds, carbohydrate monomers and non-standard residues in protein, DNA, RNA chains that are outliers for geometric or electron-density-fit criteria:

Mol	Type	Chain	Res	Chirality	Geometry	Clashes	Electron density
2	BZB	A	300	-	-	X	-

2 Entry composition i

There are 3 unique types of molecules in this entry. The entry contains 4365 atoms, of which 0 are hydrogens and 2238 are deuteriums.

In the tables below, the ZeroOcc column contains the number of atoms modelled with zero occupancy, the AltConf column contains the number of residues with at least one atom in alternate conformation and the Trace column contains the number of residues modelled with at most 2 atoms.

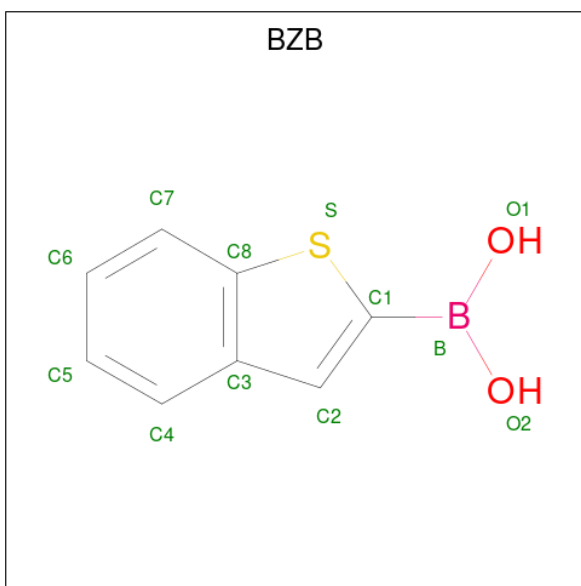
- Molecule 1 is a protein called TOHO-1 BETA-LACTAMASE.

Mol	Chain	Residues	Atoms						ZeroOcc	AltConf	Trace
			Total	C	D	N	O	S			
1	A	261	3955	1226	1985	350	388	6	0	0	0

There are 2 discrepancies between the modelled and reference sequences:

Chain	Residue	Modelled	Actual	Comment	Reference
A	274	ASN	ARG	engineered mutation	UNP Q47066
A	276	ASN	ARG	engineered mutation	UNP Q47066

- Molecule 2 is BENZO[B]THIOPHENE-2-BORONIC ACID (three-letter code: BZB) (formula: C₈H₇BO₂S).



Mol	Chain	Residues	Atoms						ZeroOcc	AltConf
			Total	B	C	D	O	S		
2	A	1	17	1	8	5	2	1	0	0

- Molecule 3 is water.


Mol	Chain	Residues	Atoms			ZeroOcc	AltConf
			Total	D	O		
3	A	145	393	248	145	0	0

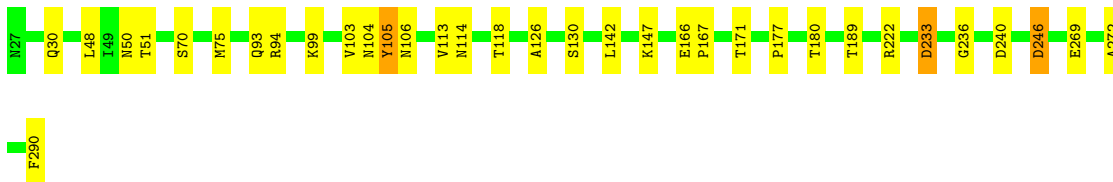
3 Residue-property plots [i](#)

These plots are drawn for all protein, RNA, DNA and oligosaccharide chains in the entry. The first graphic for a chain summarises the proportions of the various outlier classes displayed in the second graphic. The second graphic shows the sequence view annotated by issues in geometry. Residues are color-coded according to the number of geometric quality criteria for which they contain at least one outlier: green = 0, yellow = 1, orange = 2 and red = 3 or more. Stretches of 2 or more consecutive residues without any outlier are shown as a green connector. Residues present in the sample, but not in the model, are shown in grey.

Note EDS was not executed.

- Molecule 1: TOHO-1 BETA-LACTAMASE

Chain A:  87% 12%



4 Model quality [i](#)

4.1 Standard geometry [i](#)

Bond lengths and bond angles in the following residue types are not validated in this section: BZB, DOD

The Z score for a bond length (or angle) is the number of standard deviations the observed value is removed from the expected value. A bond length (or angle) with $|Z| > 5$ is considered an outlier worth inspection. RMSZ is the root-mean-square of all Z scores of the bond lengths (or angles).

Mol	Chain	Bond lengths		Bond angles	
		RMSZ	# Z >5	RMSZ	# Z >5
1	A	0.79	2/2000 (0.1%)	0.78	1/2715 (0.0%)

All (2) bond length outliers are listed below:

Mol	Chain	Res	Type	Atoms	Z	Observed(Å)	Ideal(Å)
1	A	166	GLU	CD-OE2	6.33	1.32	1.25
1	A	166	GLU	CD-OE1	-5.44	1.19	1.25

All (1) bond angle outliers are listed below:

Mol	Chain	Res	Type	Atoms	Z	Observed(°)	Ideal(°)
1	A	246	ASP	CB-CG-OD1	5.12	122.91	118.30

There are no chirality outliers.

There are no planarity outliers.

4.2 Too-close contacts [i](#)

In the following table, the Non-H and H(model) columns list the number of non-hydrogen atoms and hydrogen atoms in the chain respectively. The H(added) column lists the number of hydrogen atoms added and optimized by MolProbity. The Clashes column lists the number of clashes within the asymmetric unit, whereas Symm-Clashes lists symmetry-related clashes.

Mol	Chain	Non-H	H(model)	H(added)	Clashes	Symm-Clashes
1	A	3955	0	1979	24	0
2	A	17	0	7	4	0
3	A	393	0	0	7	3
All	All	4365	0	1986	24	3

The all-atom clashscore is defined as the number of clashes found per 1000 atoms (including hydrogen atoms). The all-atom clashscore for this structure is 6.

All (24) close contacts within the same asymmetric unit are listed below, sorted by their clash magnitude.

Atom-1	Atom-2	Interatomic distance (Å)	Clash overlap (Å)
1:A:147:LYS:NZ	3:A:2017:DOD:O	2.15	0.72
1:A:272:ALA:O	3:A:2043:DOD:O	2.13	0.66
1:A:104:ASN:ND2	2:A:300:BZB:C5	2.62	0.62
1:A:269:GLU:N	1:A:269:GLU:OE1	2.38	0.57
1:A:104:ASN:ND2	2:A:300:BZB:HC51	2.14	0.56
1:A:30:GLN:NE2	3:A:2057:DOD:O	2.38	0.55
1:A:233:ASP:OD2	1:A:246:ASP:OD1	2.25	0.55
1:A:142:LEU:O	1:A:147:LYS:HG3	2.02	0.53
1:A:75:MET:HE1	1:A:189:THR:HG21	1.81	0.53
1:A:104:ASN:HD21	2:A:300:BZB:C5	2.17	0.52
1:A:290:PHE:OXT	3:A:2065:DOD:O	2.23	0.51
1:A:99:LYS:HG3	1:A:113:VAL:HG11	1.83	0.51
1:A:222:ARG:HG3	3:A:2000:DOD:O	2.06	0.50
1:A:104:ASN:OD1	1:A:167:PRO:HB3	2.07	0.49
1:A:105:TYR:OH	3:A:2034:DOD:O	2.20	0.48
1:A:104:ASN:HD21	2:A:300:BZB:HC51	1.68	0.47
1:A:51:THR:OG1	3:A:2014:DOD:O	2.24	0.47
1:A:177:PRO:O	1:A:180:THR:OG1	2.29	0.46
1:A:70:SER:HB2	1:A:236:GLY:HA2	1.91	0.43
1:A:126:ALA:O	1:A:130:SER:HA	2.14	0.42
1:A:50:ASN:ND2	1:A:290:PHE:HE1	2.12	0.42
1:A:93:GLN:O	1:A:118:THR:HA	2.15	0.41
1:A:171:THR:O	1:A:240:ASP:HB2	2.15	0.40
1:A:113:VAL:O	1:A:114:ASN:HB2	2.15	0.40

All (3) symmetry-related close contacts are listed below. The label for Atom-2 includes the symmetry operator and encoded unit-cell translations to be applied.

Atom-1	Atom-2	Interatomic distance (Å)	Clash overlap (Å)
3:A:2110:DOD:D1	3:A:2114:DOD:O[4_565]	1.10	1.10
3:A:2110:DOD:D1	3:A:2114:DOD:D2[4_565]	1.33	0.87
3:A:2110:DOD:O	3:A:2114:DOD:O[4_565]	2.07	0.13

4.3 Torsion angles [i](#)

4.3.1 Protein backbone [i](#)

In the following table, the Percentiles column shows the percent Ramachandran outliers of the chain as a percentile score with respect to all X-ray entries followed by that with respect to entries of similar resolution.

The Analysed column shows the number of residues for which the backbone conformation was analysed, and the total number of residues.

Mol	Chain	Analysed	Favoured	Allowed	Outliers	Percentiles
1	A	259/261 (99%)	251 (97%)	6 (2%)	2 (1%)	19 13

All (2) Ramachandran outliers are listed below:

Mol	Chain	Res	Type
1	A	105	TYR
1	A	103	VAL

4.3.2 Protein sidechains [i](#)

In the following table, the Percentiles column shows the percent sidechain outliers of the chain as a percentile score with respect to all X-ray entries followed by that with respect to entries of similar resolution.

The Analysed column shows the number of residues for which the sidechain conformation was analysed, and the total number of residues.

Mol	Chain	Analysed	Rotameric	Outliers	Percentiles
1	A	209/210 (100%)	205 (98%)	4 (2%)	57 61

All (4) residues with a non-rotameric sidechain are listed below:

Mol	Chain	Res	Type
1	A	48	LEU
1	A	94	ARG
1	A	106	ASN
1	A	233	ASP

Sometimes sidechains can be flipped to improve hydrogen bonding and reduce clashes. All (1) such sidechains are listed below:

Mol	Chain	Res	Type
1	A	112	HIS

4.3.3 RNA [i](#)

There are no RNA molecules in this entry.

4.4 Non-standard residues in protein, DNA, RNA chains [i](#)

There are no non-standard protein/DNA/RNA residues in this entry.

4.5 Carbohydrates [i](#)

There are no monosaccharides in this entry.

4.6 Ligand geometry [i](#)

1 ligand is modelled in this entry.

In the following table, the Counts columns list the number of bonds (or angles) for which Mogul statistics could be retrieved, the number of bonds (or angles) that are observed in the model and the number of bonds (or angles) that are defined in the Chemical Component Dictionary. The Link column lists molecule types, if any, to which the group is linked. The Z score for a bond length (or angle) is the number of standard deviations the observed value is removed from the expected value. A bond length (or angle) with $|Z| > 2$ is considered an outlier worth inspection. RMSZ is the root-mean-square of all Z scores of the bond lengths (or angles).

Mol	Type	Chain	Res	Link	Bond lengths			Bond angles		
					Counts	RMSZ	# Z > 2	Counts	RMSZ	# Z > 2
2	BZB	A	300	1	10,13,13	2.28	2 (20%)	8,18,18	2.27	3 (37%)

In the following table, the Chirals column lists the number of chiral outliers, the number of chiral centers analysed, the number of these observed in the model and the number defined in the Chemical Component Dictionary. Similar counts are reported in the Torsion and Rings columns. '-' means no outliers of that kind were identified.

Mol	Type	Chain	Res	Link	Chirals	Torsions	Rings
2	BZB	A	300	1	-	0/0/4/4	0/2/2/2

All (2) bond length outliers are listed below:

Mol	Chain	Res	Type	Atoms	Z	Observed(Å)	Ideal(Å)
2	A	300	BZB	B-O2	4.91	1.44	1.36
2	A	300	BZB	B-O1	4.84	1.44	1.36

All (3) bond angle outliers are listed below:

Mol	Chain	Res	Type	Atoms	Z	Observed(°)	Ideal(°)
2	A	300	BZB	O2-B-C1	-4.27	107.60	120.58
2	A	300	BZB	O2-B-O1	-3.35	108.38	119.67
2	A	300	BZB	O1-B-C1	-2.89	111.79	120.58

There are no chirality outliers.

There are no torsion outliers.

There are no ring outliers.

1 monomer is involved in 4 short contacts:

Mol	Chain	Res	Type	Clashes	Symm-Clashes
2	A	300	BZB	4	0

4.7 Other polymers [i](#)

There are no such residues in this entry.

4.8 Polymer linkage issues [i](#)

There are no chain breaks in this entry.