



Full wwPDB X-ray Structure Validation Report ⓘ

May 25, 2020 – 06:30 am BST

PDB ID : 4B2N
Title : Latex Oxygenase RoxA
Authors : Seidel, J.; Schmitt, G.; Hoffmann, M.; Jendrossek, D.; Einsle, O.
Deposited on : 2012-07-17
Resolution : 1.80 Å(reported)

This is a Full wwPDB X-ray Structure Validation Report for a publicly released PDB entry.

We welcome your comments at validation@mail.wwpdb.org

A user guide is available at

<https://www.wwpdb.org/validation/2017/XrayValidationReportHelp>

with specific help available everywhere you see the ⓘ symbol.

The following versions of software and data (see [references ⓘ](#)) were used in the production of this report:

MolProbity : 4.02b-467
Mogul : 1.8.5 (274361), CSD as541be (2020)
Xtriage (Phenix) : 1.13
EDS : 2.11
buster-report : 1.1.7 (2018)
Percentile statistics : 20191225.v01 (using entries in the PDB archive December 25th 2019)
Refmac : 5.8.0158
CCP4 : 7.0.044 (Gargrove)
Ideal geometry (proteins) : Engh & Huber (2001)
Ideal geometry (DNA, RNA) : Parkinson et al. (1996)
Validation Pipeline (wwPDB-VP) : 2.11

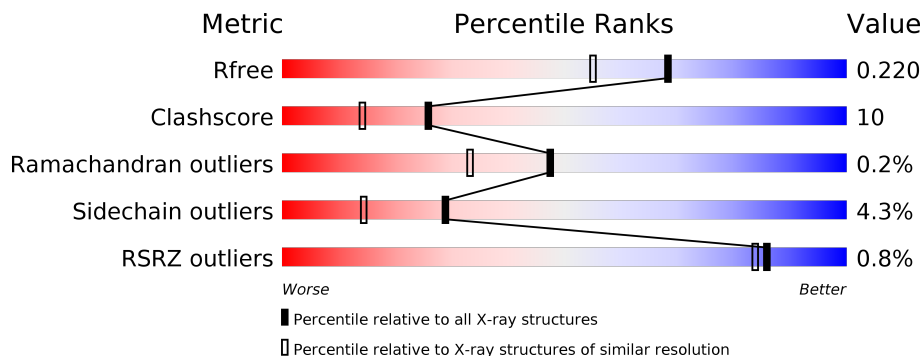
1 Overall quality at a glance

The following experimental techniques were used to determine the structure:

X-RAY DIFFRACTION

The reported resolution of this entry is 1.80 Å.

Percentile scores (ranging between 0-100) for global validation metrics of the entry are shown in the following graphic. The table shows the number of entries on which the scores are based.



Metric	Whole archive (#Entries)	Similar resolution (#Entries, resolution range(Å))
R_{free}	130704	5950 (1.80-1.80)
Clashscore	141614	6793 (1.80-1.80)
Ramachandran outliers	138981	6697 (1.80-1.80)
Sidechain outliers	138945	6696 (1.80-1.80)
RSRZ outliers	127900	5850 (1.80-1.80)

The table below summarises the geometric issues observed across the polymeric chains and their fit to the electron density. The red, orange, yellow and green segments on the lower bar indicate the fraction of residues that contain outliers for ≥ 3 , 2, 1 and 0 types of geometric quality criteria respectively. A grey segment represents the fraction of residues that are not modelled. The numeric value for each fraction is indicated below the corresponding segment, with a dot representing fractions $\leq 5\%$. The upper red bar (where present) indicates the fraction of residues that have poor fit to the electron density. The numeric value is given above the bar.

Mol	Chain	Length	Quality of chain
1	A	662	 % 81% 14% ...
1	B	662	 % 78% 17% ..

2 Entry composition i

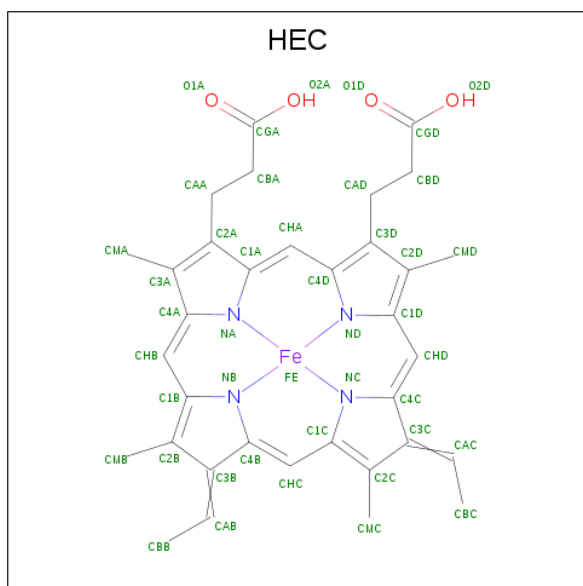
There are 5 unique types of molecules in this entry. The entry contains 12168 atoms, of which 0 are hydrogens and 0 are deuteriums.

In the tables below, the ZeroOcc column contains the number of atoms modelled with zero occupancy, the AltConf column contains the number of residues with at least one atom in alternate conformation and the Trace column contains the number of residues modelled with at most 2 atoms.

- Molecule 1 is a protein called 70 KDA PROTEIN.

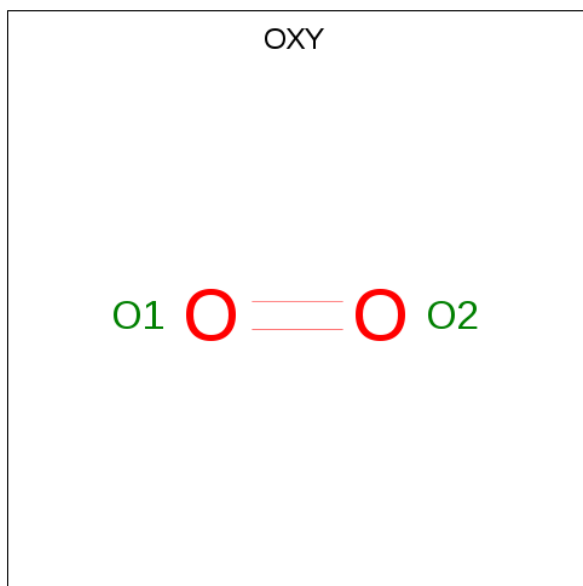
Mol	Chain	Residues	Atoms					ZeroOcc	AltConf	Trace
			Total	C	N	O	S			
1	A	648	Total	C	N	O	S	0	4	0
			5096	3246	891	940	19			
1	B	648	Total	C	N	O	S	0	5	0
			5104	3251	892	941	20			

- Molecule 2 is HEME C (three-letter code: HEC) (formula: $C_{34}H_{34}FeN_4O_4$).



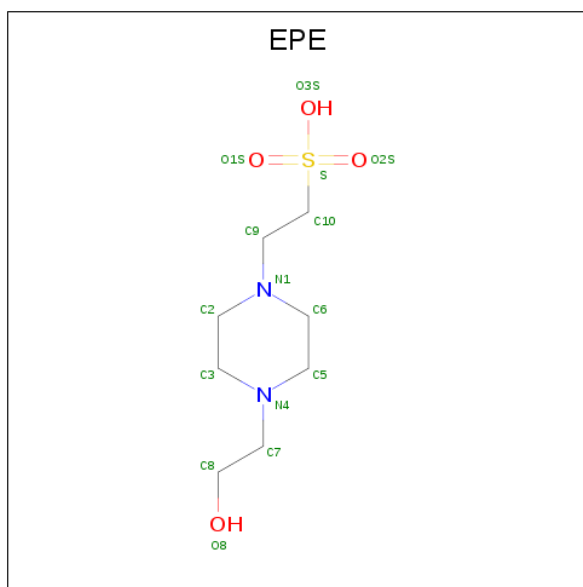
Mol	Chain	Residues	Atoms					ZeroOcc	AltConf
			Total	C	Fe	N	O		
2	A	1	Total	C	Fe	N	O	0	0
			43	34	1	4	4		
2	A	1	Total	C	Fe	N	O	0	0
			43	34	1	4	4		
2	B	1	Total	C	Fe	N	O	0	0
			43	34	1	4	4		
2	B	1	Total	C	Fe	N	O	0	0
			43	34	1	4	4		

- Molecule 3 is OXYGEN MOLECULE (three-letter code: OXY) (formula: O₂).



Mol	Chain	Residues	Atoms	ZeroOcc	AltConf	
3	A	1	Total	O	0	0
			2	2		
3	B	1	Total	O	0	0
			2	2		

- Molecule 4 is 4-(2-HYDROXYETHYL)-1-PIPERAZINE ETHANESULFONIC ACID (three-letter code: EPE) (formula: C₈H₁₈N₂O₄S).



Mol	Chain	Residues	Atoms					ZeroOcc	AltConf
			Total	C	N	O	S		
4	A	1	15	8	2	4	1	0	0
4	B	1	15	8	2	4	1	0	0

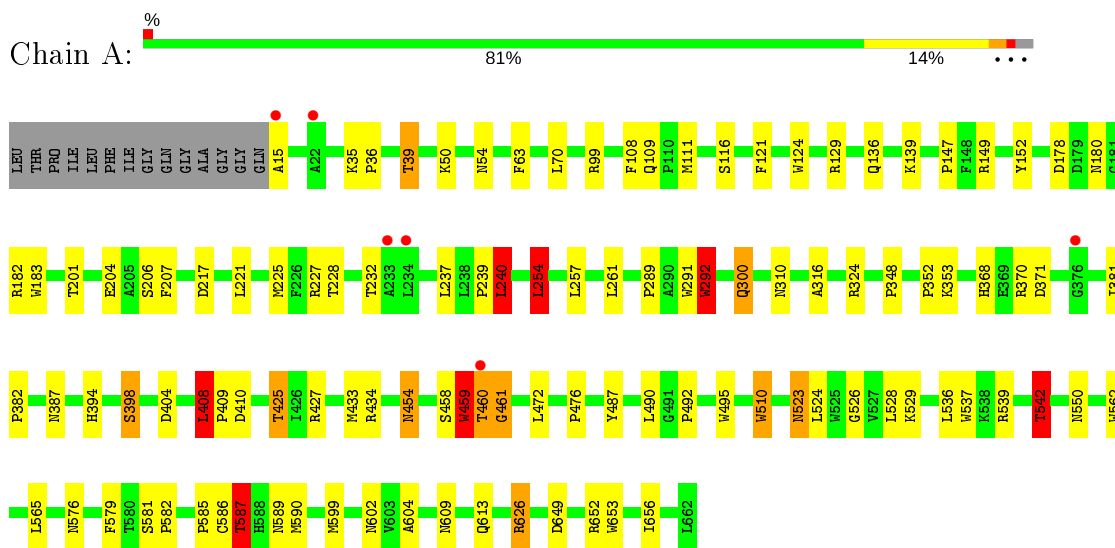
- Molecule 5 is water.

Mol	Chain	Residues	Atoms		ZeroOcc	AltConf
5	A	907	Total	O	0	0
			907	907		
5	B	855	Total	O	0	0
			855	855		

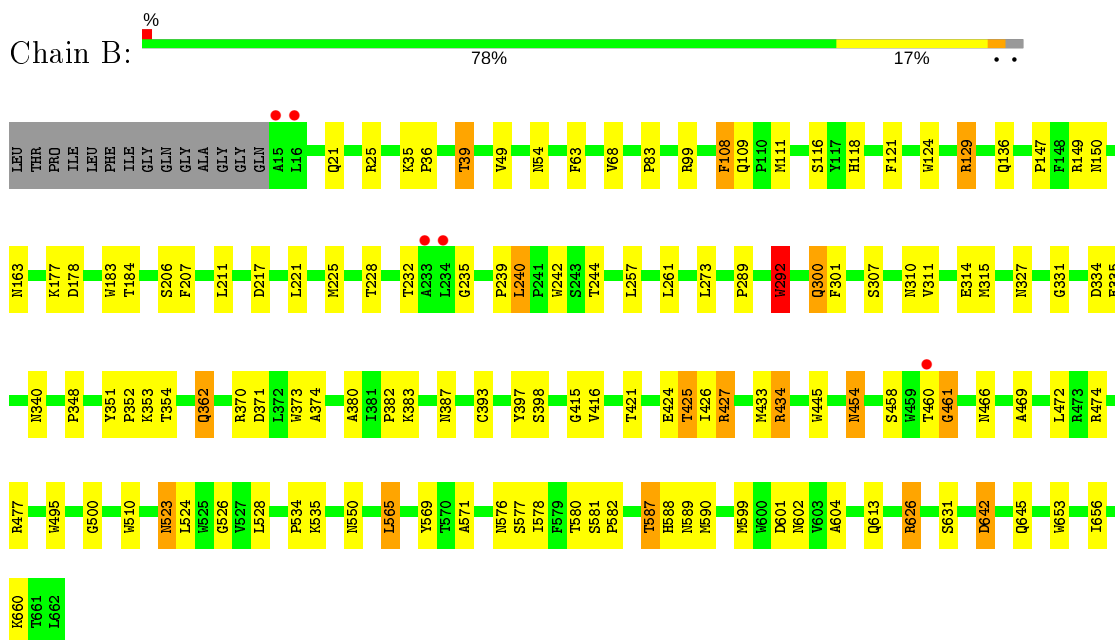
3 Residue-property plots [i](#)

These plots are drawn for all protein, RNA and DNA chains in the entry. The first graphic for a chain summarises the proportions of the various outlier classes displayed in the second graphic. The second graphic shows the sequence view annotated by issues in geometry and electron density. Residues are color-coded according to the number of geometric quality criteria for which they contain at least one outlier: green = 0, yellow = 1, orange = 2 and red = 3 or more. A red dot above a residue indicates a poor fit to the electron density ($RSRZ > 2$). Stretches of 2 or more consecutive residues without any outlier are shown as a green connector. Residues present in the sample, but not in the model, are shown in grey.

• Molecule 1: 70 KDA PROTEIN



• Molecule 1: 70 KDA PROTEIN



4 Data and refinement statistics

Property	Value	Source
Space group	P 1 21 1	Depositor
Cell constants a, b, c, α , β , γ	72.37Å 97.11Å 101.05Å 90.00° 98.39° 90.00°	Depositor
Resolution (Å)	35.80 – 1.80 35.80 – 1.80	Depositor EDS
% Data completeness (in resolution range)	98.3 (35.80-1.80) 98.2 (35.80-1.80)	Depositor EDS
R_{merge}	0.11	Depositor
R_{sym}	(Not available)	Depositor
$\langle I/\sigma(I) \rangle$ ¹	1.31 (at 1.81Å)	Xtrriage
Refinement program	REFMAC 5.6.0117	Depositor
R, R_{free}	0.168 , 0.220 0.168 , 0.220	Depositor DCC
R_{free} test set	6310 reflections (5.02%)	wwPDB-VP
Wilson B-factor (Å ²)	20.1	Xtrriage
Anisotropy	0.129	Xtrriage
Bulk solvent k_{sol} (e/Å ³), B_{sol} (Å ²)	0.31 , 38.9	EDS
L-test for twinning ²	$\langle L \rangle = 0.50$, $\langle L^2 \rangle = 0.33$	Xtrriage
Estimated twinning fraction	No twinning to report.	Xtrriage
F_o, F_c correlation	0.97	EDS
Total number of atoms	12168	wwPDB-VP
Average B, all atoms (Å ²)	23.0	wwPDB-VP

Xtrriage's analysis on translational NCS is as follows: *The largest off-origin peak in the Patterson function is 3.96% of the height of the origin peak. No significant pseudotranslation is detected.*

¹Intensities estimated from amplitudes.

²Theoretical values of $\langle |L| \rangle$, $\langle L^2 \rangle$ for acentric reflections are 0.5, 0.333 respectively for untwinned datasets, and 0.375, 0.2 for perfectly twinned datasets.

5 Model quality i

5.1 Standard geometry i

Bond lengths and bond angles in the following residue types are not validated in this section: EPE, OXY, HEC

The Z score for a bond length (or angle) is the number of standard deviations the observed value is removed from the expected value. A bond length (or angle) with $|Z| > 5$ is considered an outlier worth inspection. RMSZ is the root-mean-square of all Z scores of the bond lengths (or angles).

Mol	Chain	Bond lengths		Bond angles	
		RMSZ	# Z >5	RMSZ	# Z >5
1	A	1.03	9/5261 (0.2%)	1.07	22/7198 (0.3%)
1	B	0.99	8/5269 (0.2%)	1.04	15/7208 (0.2%)
All	All	1.01	17/10530 (0.2%)	1.05	37/14406 (0.3%)

Chiral center outliers are detected by calculating the chiral volume of a chiral center and verifying if the center is modelled as a planar moiety or with the opposite hand. A planarity outlier is detected by checking planarity of atoms in a peptide group, atoms in a mainchain group or atoms of a sidechain that are expected to be planar.

Mol	Chain	#Chirality outliers	#Planarity outliers
1	A	0	1

All (17) bond length outliers are listed below:

Mol	Chain	Res	Type	Atoms	Z	Observed(Å)	Ideal(Å)
1	A	291	TRP	CD2-CE2	7.13	1.50	1.41
1	B	495	TRP	CD2-CE2	6.73	1.49	1.41
1	A	510	TRP	CD2-CE2	6.71	1.49	1.41
1	A	653	TRP	CD2-CE2	6.56	1.49	1.41
1	A	292	TRP	CD2-CE2	6.42	1.49	1.41
1	B	292	TRP	CD2-CE2	6.37	1.49	1.41
1	B	653	TRP	CD2-CE2	5.94	1.48	1.41
1	A	459	TRP	CD2-CE2	5.59	1.48	1.41
1	A	152	TYR	CG-CD1	5.50	1.46	1.39
1	A	495	TRP	CD2-CE2	5.43	1.47	1.41
1	B	445	TRP	CD2-CE2	5.32	1.47	1.41
1	B	242	TRP	CD2-CE2	5.20	1.47	1.41
1	B	206	SER	CB-OG	-5.15	1.35	1.42
1	A	183	TRP	CD2-CE2	5.13	1.47	1.41
1	B	183	TRP	CD2-CE2	5.13	1.47	1.41
1	B	373	TRP	CD2-CE2	5.04	1.47	1.41

Continued on next page...

Continued from previous page...

Mol	Chain	Res	Type	Atoms	Z	Observed(Å)	Ideal(Å)
1	A	537	TRP	CD2-CE2	5.01	1.47	1.41

All (37) bond angle outliers are listed below:

Mol	Chain	Res	Type	Atoms	Z	Observed(°)	Ideal(°)
1	B	626	ARG	NE-CZ-NH2	-21.93	109.33	120.30
1	A	626	ARG	NE-CZ-NH2	-21.41	109.59	120.30
1	B	626	ARG	NE-CZ-NH1	15.08	127.84	120.30
1	A	626	ARG	NE-CZ-NH1	12.27	126.44	120.30
1	B	149	ARG	NE-CZ-NH2	-10.21	115.20	120.30
1	A	149	ARG	NE-CZ-NH2	-9.19	115.70	120.30
1	A	99	ARG	NE-CZ-NH1	8.60	124.60	120.30
1	A	129	ARG	NE-CZ-NH2	-8.14	116.23	120.30
1	B	129	ARG	NE-CZ-NH2	-8.09	116.25	120.30
1	A	626	ARG	CG-CD-NE	-7.56	95.93	111.80
1	B	99	ARG	NE-CZ-NH1	7.36	123.98	120.30
1	A	539	ARG	NE-CZ-NH1	-7.19	116.70	120.30
1	B	626	ARG	CG-CD-NE	-7.01	97.08	111.80
1	B	474	ARG	NE-CZ-NH2	-6.86	116.87	120.30
1	A	587	THR	CB-CA-C	-6.56	93.88	111.60
1	B	477	ARG	NE-CZ-NH2	-6.47	117.06	120.30
1	A	324	ARG	NE-CZ-NH2	-6.37	117.11	120.30
1	A	542	THR	N-CA-CB	-6.08	98.75	110.30
1	B	626	ARG	CD-NE-CZ	6.04	132.06	123.60
1	A	649	ASP	CB-CG-OD1	6.01	123.71	118.30
1	A	254	LEU	CB-CG-CD2	5.96	121.14	111.00
1	A	371	ASP	CB-CG-OD1	5.85	123.56	118.30
1	B	177	LYS	CD-CE-NZ	-5.62	98.77	111.70
1	B	434	ARG	NE-CZ-NH1	5.59	123.10	120.30
1	A	433	MET	CB-CG-SD	-5.47	95.97	112.40
1	A	626	ARG	CD-NE-CZ	5.47	131.25	123.60
1	B	273	LEU	CB-CG-CD2	-5.44	101.75	111.00
1	A	240[A]	LEU	CB-CG-CD2	-5.39	101.84	111.00
1	A	240[B]	LEU	CB-CG-CD2	-5.39	101.84	111.00
1	A	404	ASP	CB-CG-OD2	-5.38	113.46	118.30
1	A	410	ASP	CB-CG-OD1	5.37	123.13	118.30
1	A	227	ARG	NE-CZ-NH1	5.27	122.93	120.30
1	B	601	ASP	CB-CG-OD1	5.19	122.97	118.30
1	A	178	ASP	CB-CG-OD1	5.18	122.96	118.30
1	B	433	MET	CB-CG-SD	-5.09	97.12	112.40
1	B	25	ARG	NE-CZ-NH1	-5.06	117.77	120.30
1	A	408	LEU	CB-CG-CD2	5.01	119.51	111.00

There are no chirality outliers.

All (1) planarity outliers are listed below:

Mol	Chain	Res	Type	Group
1	A	459	TRP	Peptide

5.2 Too-close contacts [i](#)

In the following table, the Non-H and H(model) columns list the number of non-hydrogen atoms and hydrogen atoms in the chain respectively. The H(added) column lists the number of hydrogen atoms added and optimized by MolProbity. The Clashes column lists the number of clashes within the asymmetric unit, whereas Symm-Clashes lists symmetry related clashes.

Mol	Chain	Non-H	H(model)	H(added)	Clashes	Symm-Clashes
1	A	5096	0	4894	101	0
1	B	5104	0	4903	110	0
2	A	86	0	60	6	0
2	B	86	0	61	10	0
3	A	2	0	0	0	0
3	B	2	0	0	0	0
4	A	15	0	18	1	0
4	B	15	0	18	0	0
5	A	907	0	0	21	0
5	B	855	0	0	21	0
All	All	12168	0	9954	214	0

The all-atom clashscore is defined as the number of clashes found per 1000 atoms (including hydrogen atoms). The all-atom clashscore for this structure is 10.

All (214) close contacts within the same asymmetric unit are listed below, sorted by their clash magnitude.

Atom-1	Atom-2	Interatomic distance (Å)	Clash overlap (Å)
1:B:393:CYS:SG	2:B:701:HEC:CAC	2.09	1.40
1:B:393:CYS:SG	2:B:701:HEC:HAC	1.78	1.11
1:B:645:GLN:HG3	5:B:2837:HOH:O	1.58	1.01
1:B:427:ARG:HH11	1:B:427:ARG:HG3	1.23	0.98
1:B:163:ASN:HB3	5:B:2309:HOH:O	1.65	0.95
1:A:35:LYS:HB3	1:A:39:THR:HG21	1.48	0.93
1:A:111:MET:HG2	1:A:240[B]:LEU:CD1	2.02	0.90
1:B:36:PRO:O	1:B:39:THR:HG23	1.73	0.89
1:A:460:THR:HB	5:A:2719:HOH:O	1.72	0.89
1:B:35:LYS:HB3	1:B:39:THR:HG21	1.58	0.85

Continued on next page...

Continued from previous page...

Atom-1	Atom-2	Interatomic distance (Å)	Clash overlap (Å)
1:B:232:THR:HG23	1:B:235:GLY:HA3	1.58	0.84
1:B:240[A]:LEU:HD23	1:B:599[A]:MET:HG2	1.59	0.82
1:B:108:PHE:CZ	1:B:240[B]:LEU:HD22	2.14	0.82
1:B:240[A]:LEU:CD2	1:B:599[A]:MET:HG2	2.10	0.81
1:A:239:PRO:O	1:A:240[B]:LEU:HD23	1.81	0.81
1:B:240[A]:LEU:HD21	1:B:599[A]:MET:CE	2.10	0.81
1:A:240[A]:LEU:HD21	1:A:599:MET:CE	2.11	0.80
1:B:602:ASN:ND2	1:B:613:GLN:H	1.81	0.79
1:A:36:PRO:O	1:A:39:THR:HG23	1.82	0.79
1:B:240[A]:LEU:HD23	1:B:240[A]:LEU:O	1.83	0.79
1:A:180:ASN:HD22	1:B:571:ALA:H	1.29	0.79
1:B:111:MET:HG2	1:B:240[B]:LEU:CD1	2.13	0.78
1:A:108:PHE:CZ	1:A:240[B]:LEU:HD22	2.18	0.78
1:A:240[A]:LEU:HD23	1:A:599:MET:HG2	1.65	0.77
1:B:232:THR:CG2	1:B:235:GLY:HA3	2.14	0.77
1:B:393:CYS:HG	2:B:701:HEC:HAC	1.50	0.77
1:A:576:ASN:ND2	1:A:586:CYS:H	1.83	0.76
1:B:118:HIS:CD2	1:B:129:ARG:NH2	2.53	0.76
1:A:109:GLN:HB3	1:A:240[B]:LEU:HD21	1.68	0.75
1:B:588:HIS:HB3	5:B:2791:HOH:O	1.85	0.74
1:B:240[A]:LEU:HD21	1:B:599[A]:MET:HE2	1.68	0.74
1:B:334[B]:ASP:OD1	1:B:335:GLU:N	2.21	0.73
1:A:609:ASN:OD1	5:A:2856:HOH:O	2.06	0.73
1:A:201:THR:OG1	1:A:204:GLU:HG3	1.90	0.72
1:B:427:ARG:HG3	1:B:427:ARG:NH1	2.00	0.72
1:A:565:LEU:HD22	1:A:656:ILE:HG23	1.71	0.71
1:B:118:HIS:CD2	1:B:129:ARG:HH22	2.08	0.71
1:B:393:CYS:SG	2:B:701:HEC:C3C	2.79	0.71
1:A:576:ASN:HD21	1:A:586:CYS:H	1.36	0.71
1:A:454:ASN:HD22	1:A:454:ASN:H	1.39	0.70
1:B:21:GLN:HG2	5:B:2287:HOH:O	1.90	0.70
1:A:217:ASP:OD2	1:A:626:ARG:HD3	1.93	0.69
1:B:54:ASN:HD21	1:B:63:PHE:H	1.40	0.69
2:B:700:HEC:HBC3	2:B:700:HEC:HMC1	1.76	0.68
1:B:35:LYS:HE3	5:B:2046:HOH:O	1.92	0.67
1:A:460:THR:O	1:A:461:GLY:O	2.12	0.67
1:A:54:ASN:HD21	1:A:63:PHE:H	1.42	0.67
1:A:427:ARG:HD3	5:A:2680:HOH:O	1.94	0.67
1:A:139:LYS:HE2	1:A:542:THR:CG2	2.24	0.67
1:B:240[A]:LEU:HD23	1:B:240[A]:LEU:H	1.59	0.67
1:A:139:LYS:HE2	1:A:542:THR:HG21	1.75	0.66

Continued on next page...

Continued from previous page...

Atom-1	Atom-2	Interatomic distance (Å)	Clash overlap (Å)
1:A:490:LEU:HD13	5:A:2391:HOH:O	1.95	0.66
1:A:602:ASN:ND2	1:A:613:GLN:H	1.93	0.66
1:A:136:GLN:HE21	1:A:550:ASN:HD22	1.43	0.66
1:B:240[B]:LEU:HD23	5:B:2467:HOH:O	1.96	0.65
1:A:180:ASN:ND2	1:B:571:ALA:H	1.94	0.65
1:A:240[A]:LEU:CD2	1:A:599:MET:HG2	2.27	0.65
1:B:371:ASP:HB3	1:B:374:ALA:HB2	1.79	0.65
1:B:424:GLU:HB2	5:B:2652:HOH:O	1.97	0.64
1:B:460:THR:O	1:B:461:GLY:O	2.15	0.64
1:B:523:ASN:ND2	1:B:526:GLY:H	1.97	0.63
1:B:147:PRO:HG3	1:B:207:PHE:CD2	2.34	0.63
1:A:458:SER:HB3	5:A:2715:HOH:O	1.98	0.63
1:A:111:MET:CG	1:A:240[B]:LEU:CD1	2.77	0.62
1:A:458:SER:CB	5:A:2715:HOH:O	2.46	0.62
1:B:240[A]:LEU:HD23	1:B:240[A]:LEU:N	2.15	0.62
1:B:217:ASP:OD2	1:B:626:ARG:HD3	1.99	0.62
1:A:240[A]:LEU:HD21	1:A:599:MET:HE2	1.83	0.61
1:A:36:PRO:O	1:A:39:THR:CG2	2.49	0.60
1:B:528:LEU:HD21	2:B:701:HEC:HMB2	1.82	0.60
1:A:111:MET:SD	1:A:240[B]:LEU:HD13	2.41	0.60
1:A:136:GLN:NE2	1:A:550:ASN:HD22	2.00	0.60
1:A:15:ALA:HB1	5:A:2004:HOH:O	2.02	0.59
1:A:240[A]:LEU:HD21	1:A:599:MET:HE3	1.82	0.59
1:B:240[A]:LEU:CD2	1:B:240[A]:LEU:N	2.65	0.59
1:B:111:MET:SD	1:B:240[B]:LEU:HD13	2.41	0.59
1:B:454:ASN:H	1:B:454:ASN:HD22	1.50	0.59
1:A:111:MET:HG2	1:A:240[B]:LEU:HD11	1.85	0.59
1:A:182[B]:ARG:HD2	5:A:2370:HOH:O	2.02	0.59
1:A:15:ALA:HB3	5:A:2003:HOH:O	2.01	0.59
1:B:393:CYS:SG	2:B:701:HEC:CBC	2.89	0.58
1:B:111:MET:CG	1:B:240[B]:LEU:CD1	2.82	0.57
1:B:239:PRO:O	1:B:240[B]:LEU:HD23	2.05	0.56
1:B:244:THR:HG21	5:B:2832:HOH:O	2.05	0.56
1:A:536:LEU:HD12	1:A:536:LEU:N	2.21	0.56
1:A:579:PHE:HB3	5:A:2829:HOH:O	2.06	0.56
1:A:602:ASN:HD22	1:A:613:GLN:H	1.53	0.56
1:B:240[A]:LEU:HD23	1:B:240[A]:LEU:C	2.25	0.56
1:B:425:THR:HG21	5:B:2347:HOH:O	2.04	0.56
1:A:36:PRO:HG2	1:A:39:THR:HG22	1.89	0.55
1:A:472:LEU:HD23	1:A:472:LEU:C	2.27	0.55
1:B:109:GLN:HB3	1:B:240[B]:LEU:HD21	1.88	0.55

Continued on next page...

Continued from previous page...

Atom-1	Atom-2	Interatomic distance (Å)	Clash overlap (Å)
1:B:108:PHE:CE1	1:B:240[B]:LEU:HD22	2.42	0.55
1:B:136:GLN:HE21	1:B:550:ASN:HD22	1.55	0.55
1:A:240[A]:LEU:N	1:A:240[A]:LEU:HD23	2.21	0.55
1:B:232:THR:HG23	1:B:235:GLY:CA	2.33	0.55
1:A:108:PHE:CE1	1:A:240[B]:LEU:HD22	2.42	0.54
1:B:136:GLN:NE2	1:B:550:ASN:HD22	2.04	0.54
1:B:240[B]:LEU:CD2	5:B:2467:HOH:O	2.53	0.54
1:B:147:PRO:HG3	1:B:207:PHE:CG	2.42	0.54
1:B:383:LYS:HE2	5:B:2615:HOH:O	2.06	0.53
1:B:565:LEU:HD22	1:B:656:ILE:HG23	1.89	0.53
1:B:454:ASN:ND2	5:B:2678:HOH:O	2.42	0.53
1:A:111:MET:HG2	1:A:240[B]:LEU:HD12	1.86	0.53
1:A:587:THR:HB	1:A:589:ASN:H	1.73	0.53
1:B:36:PRO:O	1:B:39:THR:CG2	2.53	0.53
1:A:460:THR:CB	5:A:2719:HOH:O	2.45	0.53
1:A:454:ASN:N	1:A:454:ASN:HD22	2.07	0.52
1:B:362:GLN:HG2	5:B:2593:HOH:O	2.10	0.52
1:B:461:GLY:HA2	5:B:2689:HOH:O	2.08	0.52
1:A:523:ASN:HD22	1:A:523:ASN:C	2.12	0.52
1:A:240[A]:LEU:H	1:A:240[A]:LEU:HD23	1.74	0.52
1:B:240[A]:LEU:H	1:B:240[A]:LEU:CD2	2.23	0.52
1:A:111:MET:HE3	1:A:225:MET:HG3	1.93	0.51
1:B:311:VAL:O	1:B:315:MET:HG3	2.10	0.51
1:B:466:ASN:ND2	1:B:469:ALA:H	2.08	0.51
1:A:232:THR:HG23	5:A:2491:HOH:O	2.11	0.50
1:A:613:GLN:NE2	5:A:2864:HOH:O	2.44	0.50
1:B:353:LYS:NZ	5:B:2582:HOH:O	2.39	0.49
1:B:39:THR:HB	5:B:2032:HOH:O	2.11	0.49
1:B:577:SER:HB2	1:B:580:THR:HG23	1.93	0.49
1:A:585:PRO:CB	1:A:590:MET:HB2	2.42	0.49
1:A:382:PRO:O	1:A:425:THR:HB	2.11	0.49
1:B:523:ASN:HD22	1:B:523:ASN:C	2.15	0.49
1:B:534:PRO:HG3	1:B:569:TYR:CE2	2.48	0.49
1:A:427:ARG:CD	5:A:2680:HOH:O	2.55	0.49
1:B:352:PRO:HD3	1:B:510:TRP:CH2	2.47	0.49
1:B:426:ILE:C	1:B:427:ARG:HG2	2.33	0.49
1:B:535:LYS:O	1:B:631:SER:HB2	2.12	0.49
1:A:394:HIS:CE1	2:A:701:HEC:NA	2.81	0.48
1:B:240[A]:LEU:HD21	1:B:599[A]:MET:HE3	1.90	0.48
1:A:240[A]:LEU:N	1:A:240[A]:LEU:CD2	2.76	0.48
1:A:240[A]:LEU:HD23	1:A:240[A]:LEU:O	2.12	0.48

Continued on next page...

Continued from previous page...

Atom-1	Atom-2	Interatomic distance (Å)	Clash overlap (Å)
1:A:352:PRO:HD3	1:A:510:TRP:CH2	2.48	0.48
1:B:240[B]:LEU:HA	1:B:240[B]:LEU:HD23	1.47	0.48
1:A:147:PRO:HG3	1:A:207:PHE:CD2	2.48	0.48
1:B:116:SER:HB3	1:B:228:THR:HB	1.96	0.47
1:A:454:ASN:ND2	5:A:2713:HOH:O	2.47	0.47
1:A:381:ILE:HG12	1:A:427:ARG:NH1	2.30	0.47
1:A:254:LEU:HD13	1:A:316:ALA:HB1	1.96	0.47
1:A:368:HIS:CE1	1:A:398:SER:HB3	2.49	0.47
1:B:581:SER:HA	1:B:582:PRO:C	2.35	0.47
1:A:458:SER:HB2	5:A:2715:HOH:O	2.10	0.47
2:A:700:HEC:HBC3	2:A:700:HEC:HMC1	1.97	0.47
1:A:587:THR:HG21	1:A:589:ASN:HD22	1.80	0.46
1:B:83:PRO:HD3	5:B:2162:HOH:O	2.14	0.46
1:A:599:MET:HB3	5:A:2504:HOH:O	2.13	0.46
1:A:121:PHE:HA	1:A:124:TRP:CD2	2.51	0.46
1:A:221:LEU:O	1:A:225:MET:HG2	2.15	0.46
1:B:118:HIS:NE2	1:B:129:ARG:NH2	2.63	0.46
1:A:39:THR:HB	5:A:2071:HOH:O	2.16	0.46
1:B:221:LEU:HD11	1:B:225:MET:HE2	1.98	0.46
1:B:427:ARG:NH1	1:B:642:ASP:OD1	2.48	0.46
1:B:111:MET:HG2	1:B:240[B]:LEU:HD11	1.97	0.46
1:A:523:ASN:ND2	1:A:526:GLY:H	2.13	0.45
1:A:240[B]:LEU:HD23	1:A:240[B]:LEU:HA	1.51	0.45
1:A:529:LYS:CE	5:A:2777:HOH:O	2.63	0.45
1:B:49:VAL:HG21	1:B:416:VAL:HG11	1.98	0.45
1:A:139:LYS:CE	1:A:542:THR:HG21	2.44	0.45
1:A:289:PRO:HD3	2:A:700:HEC:CAD	2.47	0.45
1:A:111:MET:HB2	1:A:111:MET:HE2	1.72	0.45
2:A:701:HEC:HBC3	2:A:701:HEC:HMC1	1.98	0.45
2:B:701:HEC:HBC3	2:B:701:HEC:HMC1	1.98	0.45
1:A:292:TRP:CD2	1:A:348:PRO:HA	2.52	0.45
1:A:459:TRP:HA	5:A:2716:HOH:O	2.17	0.45
1:B:121:PHE:HA	1:B:124:TRP:CD2	2.52	0.44
1:A:139:LYS:HE2	1:A:542:THR:HG23	1.97	0.44
1:B:421:THR:O	1:B:500:GLY:HA3	2.17	0.44
1:A:257:LEU:CD1	1:A:604:ALA:HB2	2.47	0.44
1:A:70:LEU:HD22	1:A:492:PRO:HG2	2.00	0.44
1:B:257:LEU:CD1	1:B:604:ALA:HB2	2.48	0.44
1:B:434:ARG:HG3	1:B:434:ARG:HH11	1.82	0.44
1:B:656:ILE:O	1:B:660:LYS:HG3	2.18	0.44
1:A:147:PRO:HG3	1:A:207:PHE:CG	2.53	0.44

Continued on next page...

Continued from previous page...

Atom-1	Atom-2	Interatomic distance (Å)	Clash overlap (Å)
1:A:116:SER:HB3	1:A:228:THR:HB	2.00	0.43
1:B:472:LEU:HD23	1:B:472:LEU:C	2.39	0.43
1:A:300:GLN:NE2	2:A:700:HEC:HAA1	2.32	0.43
1:A:353:LYS:HE3	1:A:562:TRP:CE2	2.53	0.43
1:A:434:ARG:HH11	1:A:434:ARG:HG3	1.83	0.43
1:B:108:PHE:CE1	1:B:240[B]:LEU:CD2	3.02	0.43
1:B:576:ASN:ND2	1:B:590:MET:HG3	2.34	0.43
1:A:240[A]:LEU:C	1:A:240[A]:LEU:HD23	2.39	0.43
1:A:523:ASN:HD22	1:A:526:GLY:H	1.67	0.43
1:B:292:TRP:CD2	1:B:348:PRO:HA	2.53	0.43
1:A:15:ALA:N	5:A:2001:HOH:O	2.52	0.42
1:B:397:TYR:CE1	1:B:415:GLY:HA2	2.54	0.42
1:B:425:THR:CG2	5:B:2347:HOH:O	2.65	0.42
1:B:111:MET:HG2	1:B:240[B]:LEU:HD12	1.99	0.42
1:B:178:ASP:HB3	1:B:184:THR:HG22	2.02	0.42
1:B:314:GLU:OE2	1:B:340:ASN:ND2	2.52	0.42
1:B:331:GLY:HA3	5:B:2554:HOH:O	2.20	0.42
1:A:454:ASN:HA	1:A:459:TRP:CG	2.55	0.42
1:A:460:THR:HG23	1:A:461:GLY:N	2.34	0.42
1:B:108:PHE:CZ	1:B:240[B]:LEU:CD2	2.97	0.42
1:A:408:LEU:HD22	1:A:409:PRO:HD2	2.01	0.42
1:A:587:THR:HB	1:A:589:ASN:N	2.34	0.42
1:B:289:PRO:HD3	2:B:700:HEC:CAD	2.50	0.42
1:B:300:GLN:O	1:B:301:PHE:HB2	2.19	0.41
1:B:588:HIS:CB	5:B:2791:HOH:O	2.56	0.41
1:A:476:PRO:HB2	1:A:487:TYR:CG	2.55	0.41
1:B:300:GLN:NE2	2:B:700:HEC:HAA1	2.35	0.41
1:A:35:LYS:HB3	1:A:39:THR:CG2	2.35	0.41
1:A:529:LYS:HD2	1:A:652:ARG:NH1	2.35	0.41
1:A:581:SER:HA	1:A:582:PRO:C	2.41	0.41
1:B:380:ALA:HB3	5:B:2609:HOH:O	2.21	0.41
1:B:68:VAL:HB	1:B:307:SER:HB2	2.02	0.41
1:B:587:THR:HB	1:B:589:ASN:H	1.86	0.40
1:A:528:LEU:HD21	2:A:701:HEC:HMB2	2.03	0.40
1:B:351:TYR:HA	1:B:352:PRO:HD3	1.87	0.40
1:B:382:PRO:O	1:B:425:THR:HB	2.21	0.40
1:B:460:THR:HG23	1:B:460:THR:O	2.20	0.40
1:B:111:MET:HE3	1:B:111:MET:HB2	1.83	0.40
4:A:1664:EPE:H102	4:A:1664:EPE:H61	1.89	0.40
1:B:111:MET:CG	1:B:240[B]:LEU:HD13	2.52	0.40

There are no symmetry-related clashes.

5.3 Torsion angles [i](#)

5.3.1 Protein backbone [i](#)

In the following table, the Percentiles column shows the percent Ramachandran outliers of the chain as a percentile score with respect to all X-ray entries followed by that with respect to entries of similar resolution.

The Analysed column shows the number of residues for which the backbone conformation was analysed, and the total number of residues.

Mol	Chain	Analysed	Favoured	Allowed	Outliers	Percentiles	
1	A	650/662 (98%)	631 (97%)	18 (3%)	1 (0%)	47	33
1	B	651/662 (98%)	632 (97%)	18 (3%)	1 (0%)	47	33
All	All	1301/1324 (98%)	1263 (97%)	36 (3%)	2 (0%)	47	33

All (2) Ramachandran outliers are listed below:

Mol	Chain	Res	Type
1	A	461	GLY
1	B	461	GLY

5.3.2 Protein sidechains [i](#)

In the following table, the Percentiles column shows the percent sidechain outliers of the chain as a percentile score with respect to all X-ray entries followed by that with respect to entries of similar resolution.

The Analysed column shows the number of residues for which the sidechain conformation was analysed, and the total number of residues.

Mol	Chain	Analysed	Rotameric	Outliers	Percentiles	
1	A	536/541 (99%)	514 (96%)	22 (4%)	30	16
1	B	537/541 (99%)	511 (95%)	26 (5%)	25	11
All	All	1073/1082 (99%)	1025 (96%)	48 (4%)	29	13

All (48) residues with a non-rotameric sidechain are listed below:

Mol	Chain	Res	Type
1	A	39	THR
1	A	50	LYS
1	A	206	SER
1	A	237	LEU

Continued on next page...

Continued from previous page...

Mol	Chain	Res	Type
1	A	240[A]	LEU
1	A	240[B]	LEU
1	A	254	LEU
1	A	261	LEU
1	A	292	TRP
1	A	300	GLN
1	A	310	ASN
1	A	370	ARG
1	A	387	ASN
1	A	398	SER
1	A	408	LEU
1	A	425	THR
1	A	454	ASN
1	A	460	THR
1	A	523	ASN
1	A	524	LEU
1	A	542	THR
1	A	587	THR
1	B	39	THR
1	B	108	PHE
1	B	150	ASN
1	B	211	LEU
1	B	240[A]	LEU
1	B	240[B]	LEU
1	B	261	LEU
1	B	292	TRP
1	B	300	GLN
1	B	310	ASN
1	B	327	ASN
1	B	354	THR
1	B	362	GLN
1	B	370	ARG
1	B	387	ASN
1	B	398	SER
1	B	425	THR
1	B	427	ARG
1	B	454	ASN
1	B	458	SER
1	B	523	ASN
1	B	524	LEU
1	B	565	LEU
1	B	578	ILE

Continued on next page...

Continued from previous page...

Mol	Chain	Res	Type
1	B	587	THR
1	B	642	ASP

Some sidechains can be flipped to improve hydrogen bonding and reduce clashes. All (33) such sidechains are listed below:

Mol	Chain	Res	Type
1	A	54	ASN
1	A	106	GLN
1	A	136	GLN
1	A	150	ASN
1	A	163	ASN
1	A	180	ASN
1	A	300	GLN
1	A	362	GLN
1	A	387	ASN
1	A	454	ASN
1	A	482	ASN
1	A	523	ASN
1	A	576	ASN
1	A	589	ASN
1	A	602	ASN
1	A	609	ASN
1	A	613	GLN
1	B	54	ASN
1	B	106	GLN
1	B	136	GLN
1	B	150	ASN
1	B	300	GLN
1	B	327	ASN
1	B	362	GLN
1	B	387	ASN
1	B	454	ASN
1	B	466	ASN
1	B	482	ASN
1	B	523	ASN
1	B	576	ASN
1	B	589	ASN
1	B	602	ASN
1	B	613	GLN

5.3.3 RNA [i](#)

There are no RNA molecules in this entry.

5.4 Non-standard residues in protein, DNA, RNA chains [i](#)

There are no non-standard protein/DNA/RNA residues in this entry.

5.5 Carbohydrates [i](#)

There are no carbohydrates in this entry.

5.6 Ligand geometry [i](#)

8 ligands are modelled in this entry.

In the following table, the Counts columns list the number of bonds (or angles) for which Mogul statistics could be retrieved, the number of bonds (or angles) that are observed in the model and the number of bonds (or angles) that are defined in the Chemical Component Dictionary. The Link column lists molecule types, if any, to which the group is linked. The Z score for a bond length (or angle) is the number of standard deviations the observed value is removed from the expected value. A bond length (or angle) with $|Z| > 2$ is considered an outlier worth inspection. RMSZ is the root-mean-square of all Z scores of the bond lengths (or angles).

Mol	Type	Chain	Res	Link	Bond lengths			Bond angles		
					Counts	RMSZ	# Z > 2	Counts	RMSZ	# Z > 2
4	EPE	A	1664	-	15,15,15	2.29	2 (13%)	18,20,20	1.20	1 (5%)
4	EPE	B	1664	-	15,15,15	2.21	2 (13%)	18,20,20	2.01	5 (27%)
2	HEC	A	700	1,3	26,50,50	2.13	5 (19%)	18,82,82	3.55	9 (50%)
2	HEC	B	700	1,3	26,50,50	2.26	12 (46%)	18,82,82	3.02	8 (44%)
2	HEC	A	701	1	26,50,50	2.38	9 (34%)	18,82,82	2.80	6 (33%)
2	HEC	B	701	1	26,50,50	2.79	11 (42%)	18,82,82	3.36	11 (61%)
3	OXY	A	1663	2	1,1,1	0.67	0	-		
3	OXY	B	1663	2	1,1,1	0.64	0	-		

In the following table, the Chirals column lists the number of chiral outliers, the number of chiral centers analysed, the number of these observed in the model and the number defined in the Chemical Component Dictionary. Similar counts are reported in the Torsion and Rings columns. '-' means no outliers of that kind were identified.

Mol	Type	Chain	Res	Link	Chirals	Torsions	Rings
4	EPE	A	1664	-	-	5/9/19/19	0/1/1/1

Continued on next page...

Continued from previous page...

Mol	Type	Chain	Res	Link	Chirals	Torsions	Rings
4	EPE	B	1664	-	-	2/9/19/19	0/1/1/1
2	HEC	A	700	1,3	-	0/6/54/54	-
2	HEC	B	700	1,3	-	0/6/54/54	-
2	HEC	A	701	1	-	0/6/54/54	-
2	HEC	B	701	1	-	0/6/54/54	-

All (41) bond length outliers are listed below:

Mol	Chain	Res	Type	Atoms	Z	Observed(Å)	Ideal(Å)
2	A	700	HEC	C3C-C2C	7.29	1.48	1.40
2	B	701	HEC	C3C-C2C	7.18	1.48	1.40
2	A	701	HEC	C3B-C2B	6.90	1.48	1.40
2	B	701	HEC	C3B-C2B	6.41	1.47	1.40
4	B	1664	EPE	C10-S	-6.20	1.68	1.77
4	A	1664	EPE	O3S-S	6.07	1.69	1.47
4	A	1664	EPE	C10-S	-5.76	1.69	1.77
4	B	1664	EPE	O2S-S	5.45	1.61	1.45
2	B	700	HEC	C3C-C2C	5.10	1.46	1.40
2	B	701	HEC	C1C-NC	4.68	1.45	1.36
2	B	700	HEC	C1C-NC	4.39	1.45	1.36
2	B	701	HEC	C2A-C3A	3.84	1.49	1.37
2	A	701	HEC	CBC-CAC	-3.84	1.35	1.49
2	A	701	HEC	C3C-C2C	3.69	1.44	1.40
2	B	701	HEC	CBB-CAB	-3.55	1.36	1.49
2	A	701	HEC	C3C-C4C	3.52	1.49	1.43
2	B	701	HEC	CBC-CAC	-3.49	1.36	1.49
2	A	701	HEC	C2A-C3A	3.44	1.47	1.37
2	B	700	HEC	CBB-CAB	-3.30	1.37	1.49
2	B	700	HEC	C3D-C2D	3.23	1.47	1.37
2	A	701	HEC	C1C-NC	3.22	1.42	1.36
2	B	700	HEC	C4A-C3A	3.15	1.49	1.42
2	B	701	HEC	C3C-C4C	3.06	1.48	1.43
2	B	700	HEC	CAD-C3D	-2.96	1.47	1.52
2	B	701	HEC	C1A-C2A	2.93	1.49	1.42
2	A	700	HEC	C4D-ND	-2.85	1.30	1.36
2	B	700	HEC	C3B-C4B	2.63	1.47	1.43
2	B	700	HEC	C3B-C2B	2.53	1.43	1.40
2	B	700	HEC	C1D-CHD	2.48	1.47	1.41
2	B	701	HEC	C3D-C2D	2.48	1.45	1.37
2	A	701	HEC	CBB-CAB	-2.47	1.40	1.49
2	A	700	HEC	CBC-CAC	-2.46	1.40	1.49
2	A	701	HEC	C3D-C2D	2.43	1.44	1.37

Continued on next page...

Continued from previous page...

Mol	Chain	Res	Type	Atoms	Z	Observed(Å)	Ideal(Å)
2	B	700	HEC	C1A-C2A	2.43	1.48	1.42
2	A	701	HEC	C1D-CHD	2.40	1.47	1.41
2	B	700	HEC	C2A-C3A	2.37	1.44	1.37
2	B	701	HEC	C4A-C3A	2.33	1.47	1.42
2	B	700	HEC	CBC-CAC	-2.23	1.41	1.49
2	A	700	HEC	C4A-C3A	2.06	1.47	1.42
2	A	700	HEC	C1D-CHD	2.04	1.46	1.41
2	B	701	HEC	C3B-C4B	2.03	1.46	1.43

All (40) bond angle outliers are listed below:

Mol	Chain	Res	Type	Atoms	Z	Observed(°)	Ideal(°)
2	A	700	HEC	CBD-CAD-C3D	-7.20	99.20	112.49
2	A	700	HEC	CMB-C2B-C3B	7.00	134.05	125.82
2	B	701	HEC	CBA-CAA-C2A	-6.75	100.03	112.48
2	B	701	HEC	CMB-C2B-C3B	6.74	133.75	125.82
2	A	701	HEC	C1D-C2D-C3D	-6.49	102.48	107.00
2	B	700	HEC	CBD-CAD-C3D	-6.38	100.72	112.49
2	A	700	HEC	C1D-C2D-C3D	-6.33	102.59	107.00
2	B	700	HEC	C1D-C2D-C3D	-6.06	102.78	107.00
2	A	701	HEC	CBA-CAA-C2A	-6.05	101.33	112.48
2	B	701	HEC	C1D-C2D-C3D	-5.17	103.40	107.00
2	B	700	HEC	CMB-C2B-C3B	5.13	131.85	125.82
2	A	700	HEC	CMC-C2C-C3C	4.77	131.43	125.82
4	B	1664	EPE	O2S-S-C10	-4.71	101.24	106.92
2	B	701	HEC	CBD-CAD-C3D	-4.61	103.99	112.49
2	A	701	HEC	CMB-C2B-C3B	4.23	130.79	125.82
2	A	701	HEC	CBD-CAD-C3D	-4.19	104.76	112.49
2	B	700	HEC	CBA-CAA-C2A	-3.95	105.20	112.48
2	B	700	HEC	CAA-CBA-CGA	-3.93	106.08	112.67
2	A	700	HEC	CMB-C2B-C1B	-3.90	122.47	128.46
4	B	1664	EPE	O3S-S-C10	3.89	112.06	105.77
2	B	701	HEC	CAA-CBA-CGA	-3.52	106.76	112.67
4	B	1664	EPE	C6-N1-C2	3.51	116.72	108.83
2	A	700	HEC	CBA-CAA-C2A	-3.47	106.08	112.48
2	B	701	HEC	CMD-C2D-C3D	3.28	131.12	124.94
2	A	701	HEC	C4B-C3B-C2B	-3.24	102.85	106.35
2	A	700	HEC	CMC-C2C-C1C	-3.05	123.77	128.46
2	A	700	HEC	C4B-C3B-C2B	-2.86	103.27	106.35
2	B	701	HEC	C4C-C3C-C2C	2.84	109.42	106.35
4	B	1664	EPE	C6-C5-N4	-2.81	104.87	110.64
4	A	1664	EPE	O3S-S-C10	2.67	110.08	105.77

Continued on next page...

Continued from previous page...

Mol	Chain	Res	Type	Atoms	Z	Observed(°)	Ideal(°)
2	B	701	HEC	CMC-C2C-C3C	2.58	128.85	125.82
2	B	700	HEC	CAD-CBD-CGD	-2.53	108.43	112.67
2	A	701	HEC	C3B-C4B-NB	2.42	115.51	110.94
2	B	701	HEC	CMA-C3A-C2A	2.37	129.42	124.94
2	A	700	HEC	C3B-C4B-NB	2.29	115.27	110.94
2	B	700	HEC	CMC-C2C-C3C	2.21	128.42	125.82
2	B	700	HEC	C4B-C3B-C2B	-2.12	104.06	106.35
4	B	1664	EPE	C3-C2-N1	2.05	114.85	110.64
2	B	701	HEC	CMB-C2B-C1B	-2.05	125.32	128.46
2	B	701	HEC	CAD-CBD-CGD	-2.04	109.25	112.67

There are no chirality outliers.

All (7) torsion outliers are listed below:

Mol	Chain	Res	Type	Atoms
4	A	1664	EPE	C10-C9-N1-C6
4	A	1664	EPE	C8-C7-N4-C3
4	B	1664	EPE	C8-C7-N4-C5
4	A	1664	EPE	N4-C7-C8-O8
4	B	1664	EPE	N4-C7-C8-O8
4	A	1664	EPE	S-C10-C9-N1
4	A	1664	EPE	C10-C9-N1-C2

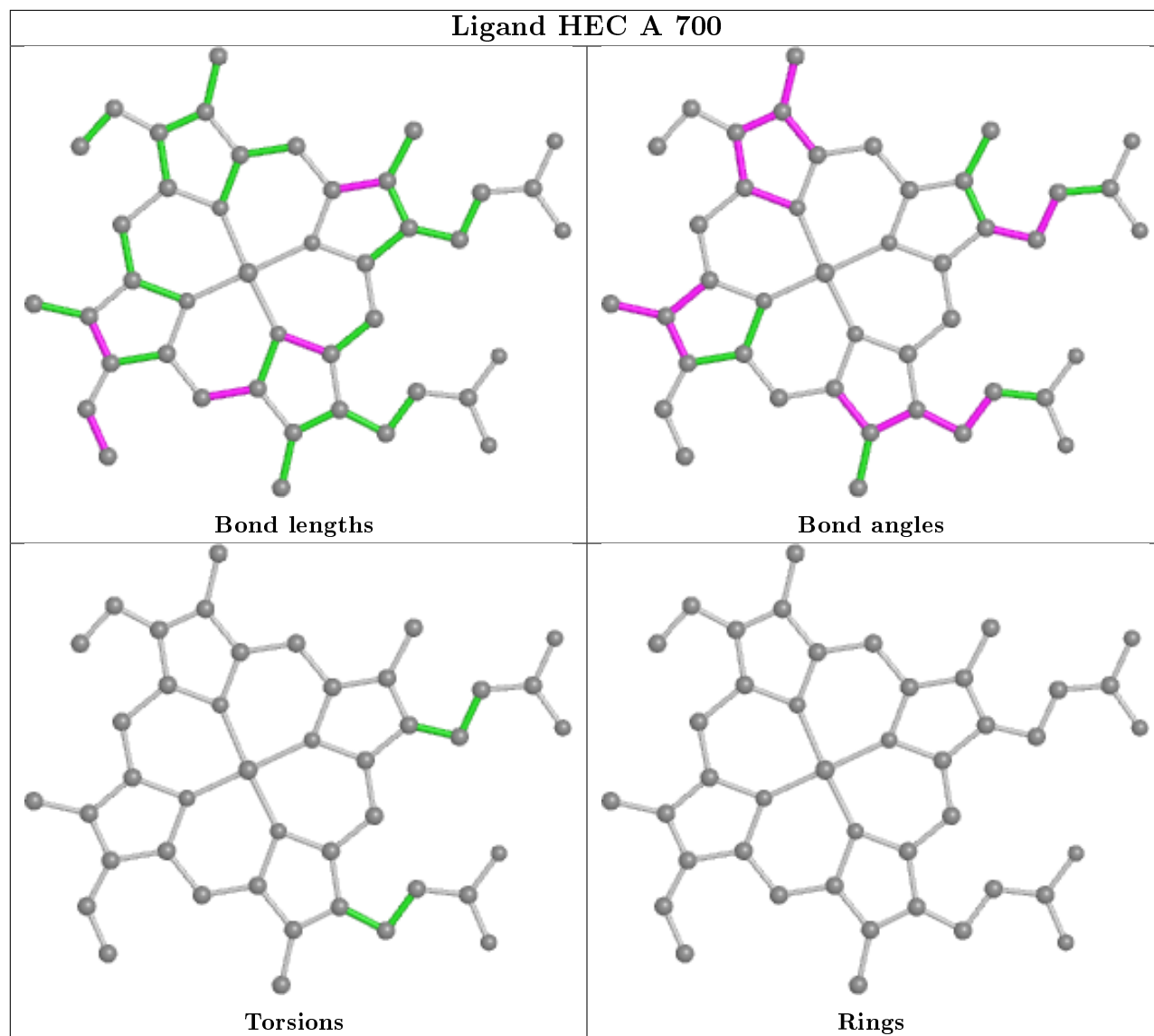
There are no ring outliers.

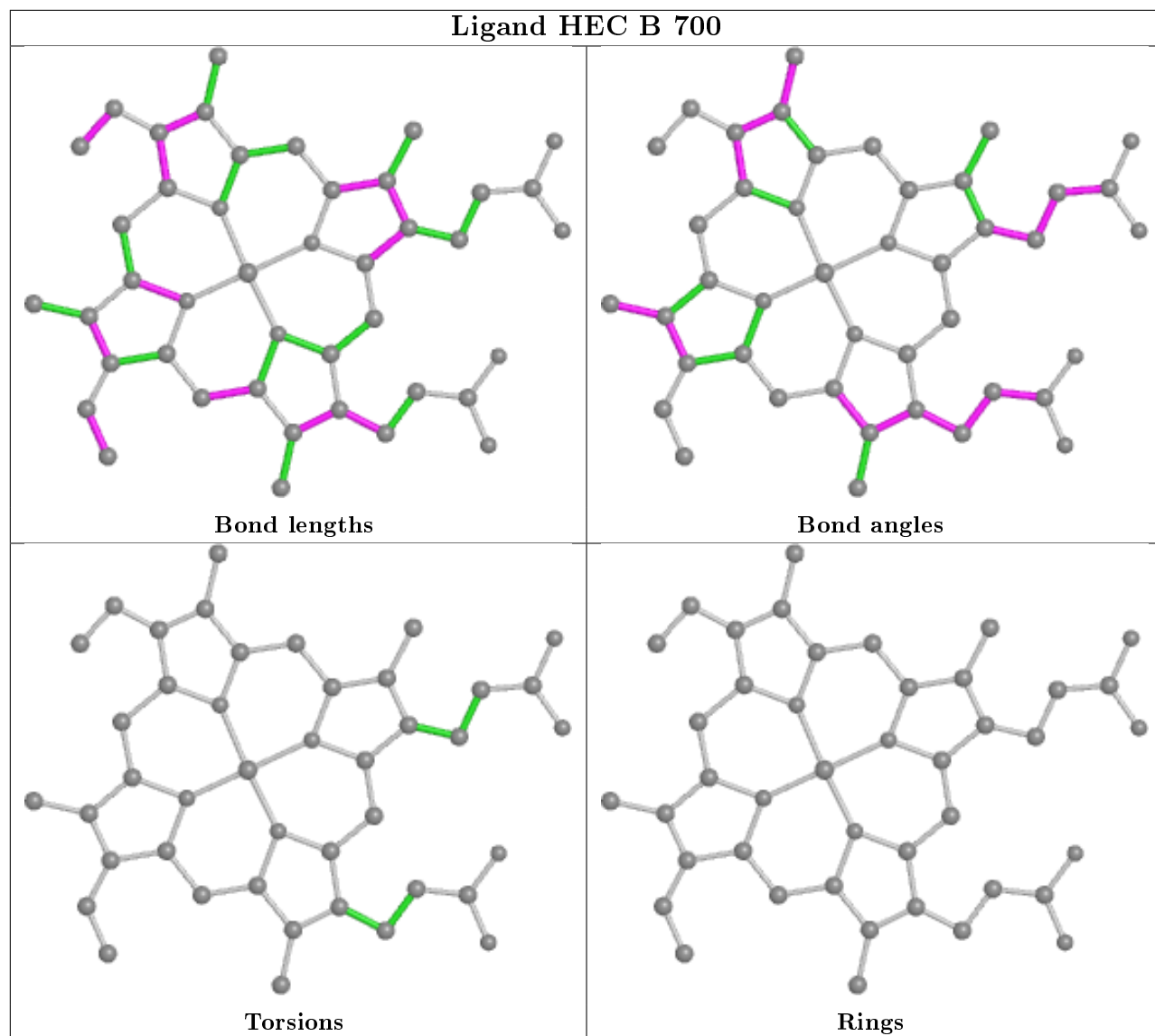
5 monomers are involved in 17 short contacts:

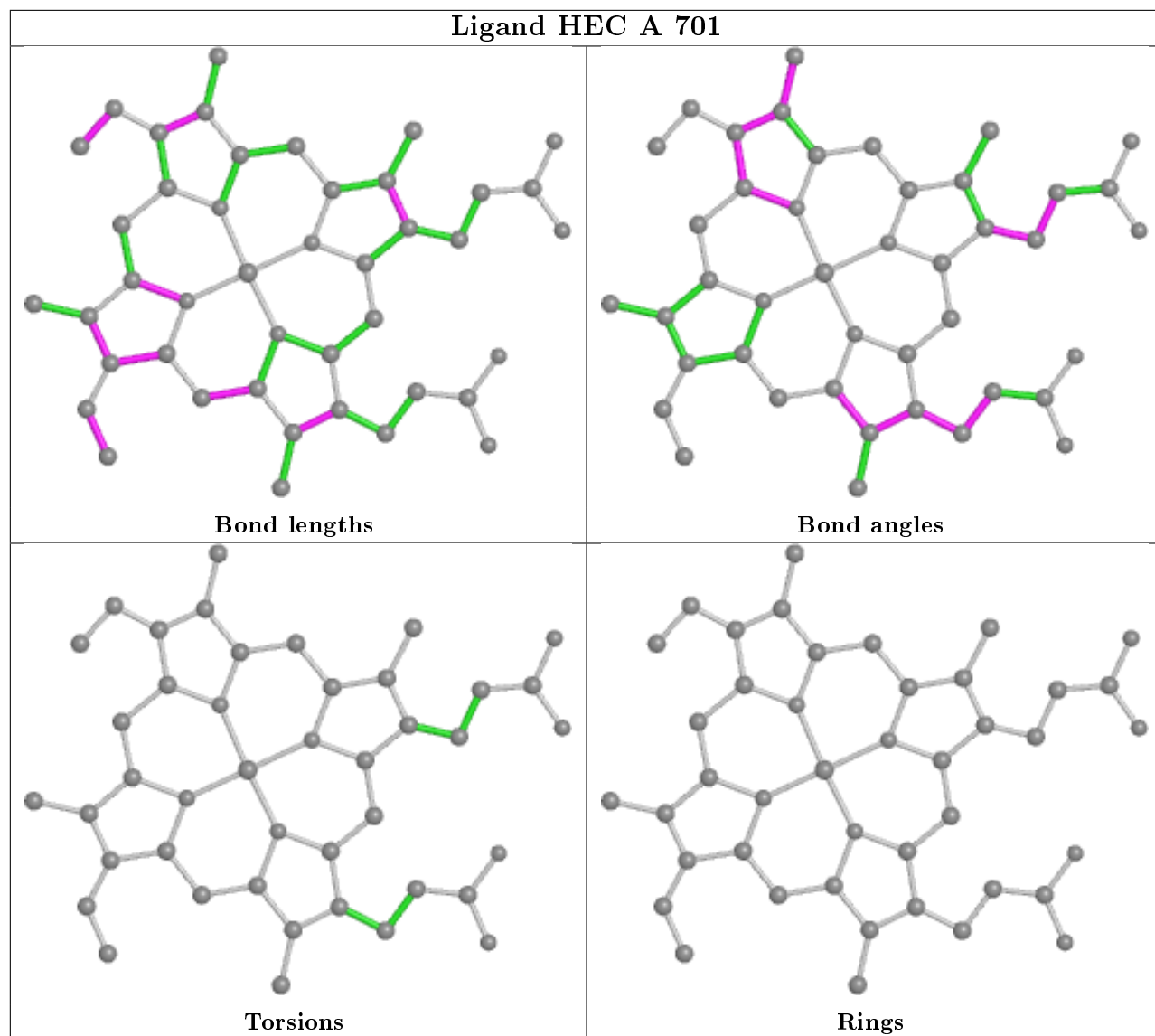
Mol	Chain	Res	Type	Clashes	Symm-Clashes
4	A	1664	EPE	1	0
2	A	700	HEC	3	0
2	B	700	HEC	3	0
2	A	701	HEC	3	0
2	B	701	HEC	7	0

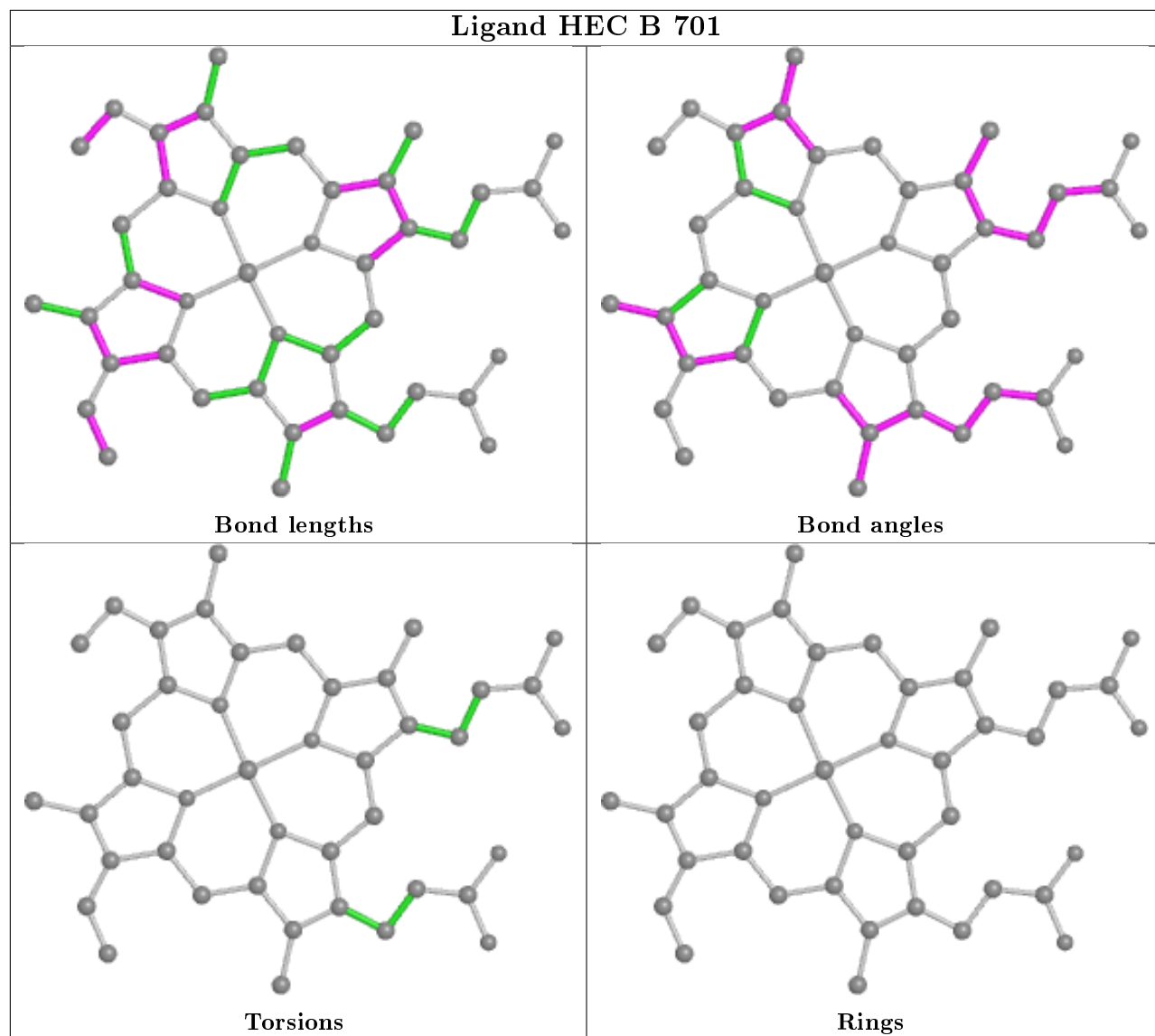
The following is a two-dimensional graphical depiction of Mogul quality analysis of bond lengths, bond angles, torsion angles, and ring geometry for all instances of the Ligand of Interest. In addition, ligands with molecular weight > 250 and outliers as shown on the validation Tables will also be included. For torsion angles, if less than 5% of the Mogul distribution of torsion angles is within 10 degrees of the torsion angle in question, then that torsion angle is considered an outlier. Any bond that is central to one or more torsion angles identified as an outlier by Mogul will be highlighted in the graph. For rings, the root-mean-square deviation (RMSD) between the ring in question and similar rings identified by Mogul is calculated over all ring torsion angles. If the average RMSD is greater than 60 degrees and the minimal RMSD between the ring in question and

any Mogul-identified rings is also greater than 60 degrees, then that ring is considered an outlier. The outliers are highlighted in purple. The color gray indicates Mogul did not find sufficient equivalents in the CSD to analyse the geometry.









5.7 Other polymers [\(i\)](#)

There are no such residues in this entry.

5.8 Polymer linkage issues [\(i\)](#)

There are no chain breaks in this entry.

6 Fit of model and data [i](#)

6.1 Protein, DNA and RNA chains [i](#)

In the following table, the column labelled ‘#RSRZ> 2’ contains the number (and percentage) of RSRZ outliers, followed by percent RSRZ outliers for the chain as percentile scores relative to all X-ray entries and entries of similar resolution. The OWAB column contains the minimum, median, 95th percentile and maximum values of the occupancy-weighted average B-factor per residue. The column labelled ‘Q< 0.9’ lists the number of (and percentage) of residues with an average occupancy less than 0.9.

Mol	Chain	Analysed	<RSRZ>	#RSRZ>2	OWAB(Å ²)	Q<0.9
1	A	648/662 (97%)	-0.56	6 (0%) 84 82	12, 19, 33, 51	0
1	B	648/662 (97%)	-0.48	5 (0%) 86 84	13, 22, 37, 53	0
All	All	1296/1324 (97%)	-0.52	11 (0%) 86 84	12, 20, 35, 53	0

All (11) RSRZ outliers are listed below:

Mol	Chain	Res	Type	RSRZ
1	B	234	LEU	4.5
1	A	234	LEU	4.4
1	B	233	ALA	3.7
1	A	233	ALA	3.4
1	A	15	ALA	3.3
1	B	16	LEU	3.1
1	A	376	GLY	2.8
1	B	15	ALA	2.5
1	A	22	ALA	2.5
1	A	460	THR	2.4
1	B	460	THR	2.3

6.2 Non-standard residues in protein, DNA, RNA chains [i](#)

There are no non-standard protein/DNA/RNA residues in this entry.

6.3 Carbohydrates [i](#)

There are no carbohydrates in this entry.

6.4 Ligands

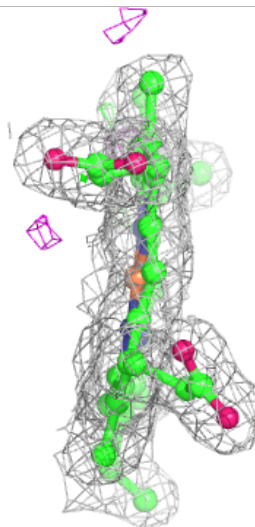
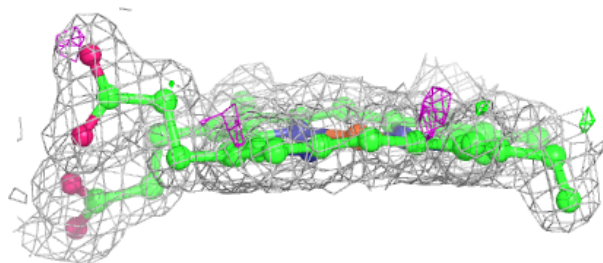
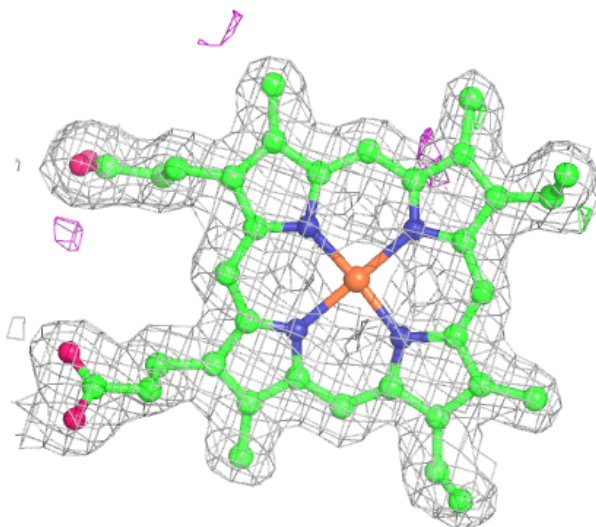
In the following table, the Atoms column lists the number of modelled atoms in the group and the number defined in the chemical component dictionary. The B-factors column lists the minimum, median, 95th percentile and maximum values of B factors of atoms in the group. The column labelled 'Q<0.9' lists the number of atoms with occupancy less than 0.9.

Mol	Type	Chain	Res	Atoms	RSCC	RSR	B-factors(\AA^2)	Q<0.9
4	EPE	A	1664	15/15	0.91	0.19	37,51,66,78	0
4	EPE	B	1664	15/15	0.95	0.13	25,36,55,66	0
3	OXY	B	1663	2/2	0.96	0.09	25,25,25,35	0
2	HEC	B	701	43/43	0.98	0.09	17,20,24,25	0
3	OXY	A	1663	2/2	0.98	0.08	19,19,19,30	0
2	HEC	A	701	43/43	0.98	0.10	14,18,19,22	0
2	HEC	A	700	43/43	0.99	0.14	11,12,14,15	0
2	HEC	B	700	43/43	0.99	0.15	12,14,15,16	0

The following is a graphical depiction of the model fit to experimental electron density of all instances of the Ligand of Interest. In addition, ligands with molecular weight > 250 and outliers as shown on the geometry validation Tables will also be included. Each fit is shown from different orientation to approximate a three-dimensional view.

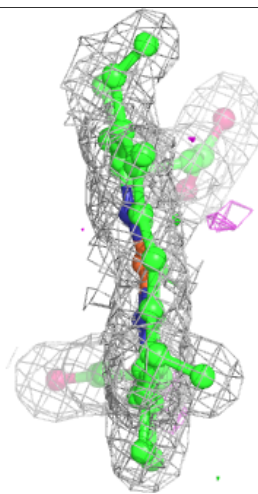
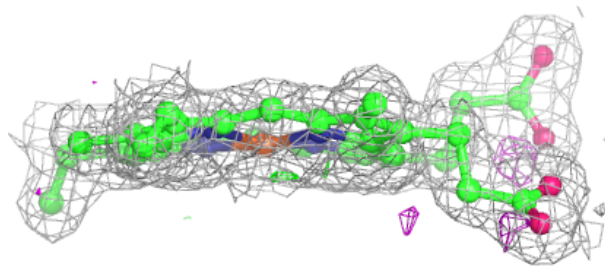
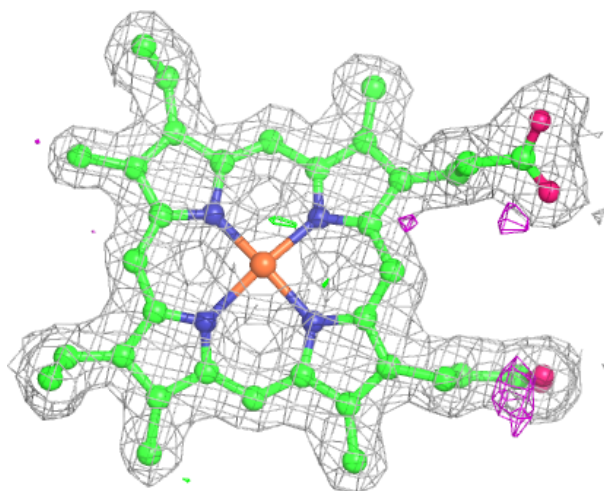
Electron density around HEC B 701:

$2mF_o-DF_c$ (at 0.7 rmsd) in gray
 mF_o-DF_c (at 3 rmsd) in purple (negative)
and green (positive)



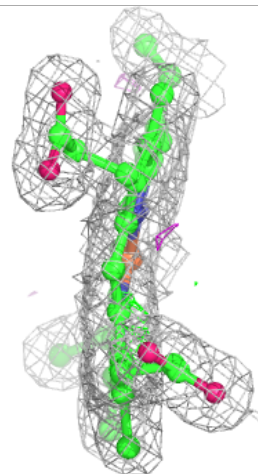
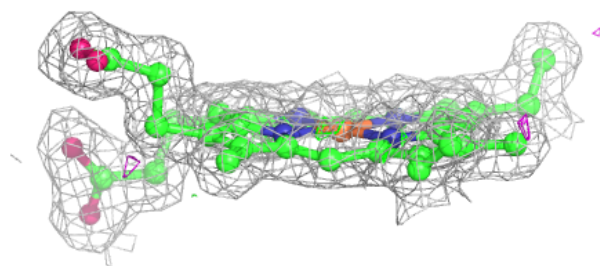
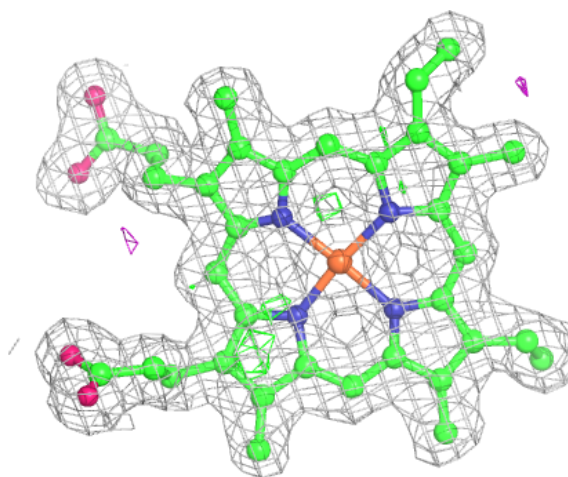
Electron density around HEC A 701:

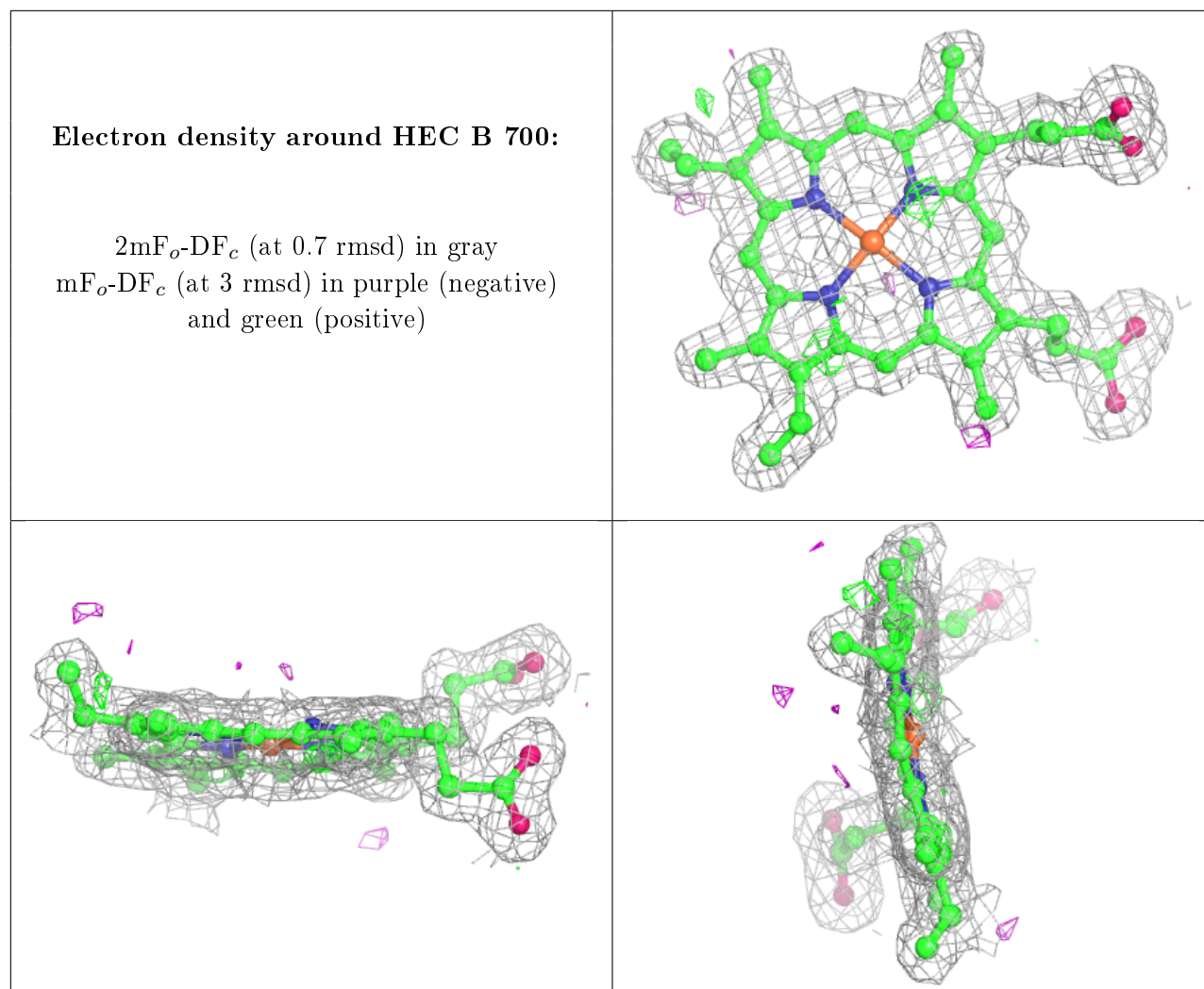
$2mF_o-DF_c$ (at 0.7 rmsd) in gray
 mF_o-DF_c (at 3 rmsd) in purple (negative)
and green (positive)



Electron density around HEC A 700:

$2mF_o-DF_c$ (at 0.7 rmsd) in gray
 mF_o-DF_c (at 3 rmsd) in purple (negative)
and green (positive)





6.5 Other polymers ⓘ

There are no such residues in this entry.