



Full wwPDB X-ray Structure Validation Report ⓘ

May 25, 2020 – 12:09 pm BST

PDB ID : 4A92
Title : Full-length HCV NS3-4A protease-helicase in complex with a macrocyclic protease inhibitor.
Authors : Schiering, N.; D'Arcy, A.; Simic, O.; Eder, J.; Raman, P.; Svergun, D.I.; Bodendorf, U.
Deposited on : 2011-11-23
Resolution : 2.73 Å(reported)

This is a Full wwPDB X-ray Structure Validation Report for a publicly released PDB entry.

We welcome your comments at validation@mail.wwpdb.org

A user guide is available at

<https://www.wwpdb.org/validation/2017/XrayValidationReportHelp>

with specific help available everywhere you see the ⓘ symbol.

The following versions of software and data (see [references ⓘ](#)) were used in the production of this report:

MolProbity : 4.02b-467
Mogul : 1.8.5 (274361), CSD as541be (2020)
Xtriage (Phenix) : 1.13
EDS : 2.11
buster-report : 1.1.7 (2018)
Percentile statistics : 20191225.v01 (using entries in the PDB archive December 25th 2019)
Refmac : 5.8.0158
CCP4 : 7.0.044 (Gargrove)
Ideal geometry (proteins) : Engh & Huber (2001)
Ideal geometry (DNA, RNA) : Parkinson et al. (1996)
Validation Pipeline (wwPDB-VP) : 2.11

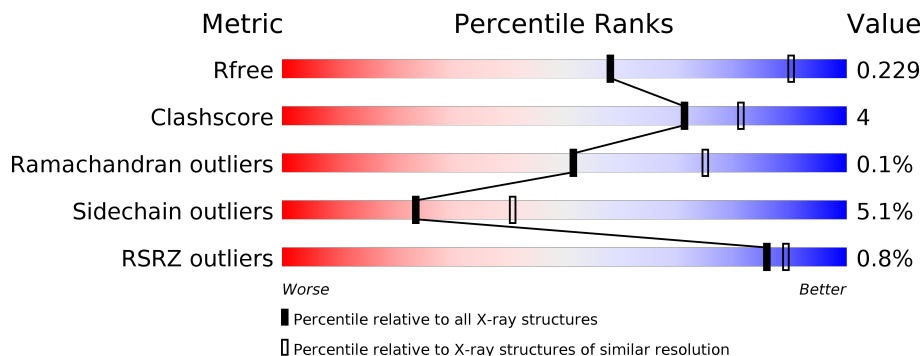
1 Overall quality at a glance

The following experimental techniques were used to determine the structure:

X-RAY DIFFRACTION

The reported resolution of this entry is 2.73 Å.

Percentile scores (ranging between 0-100) for global validation metrics of the entry are shown in the following graphic. The table shows the number of entries on which the scores are based.



Metric	Whole archive (#Entries)	Similar resolution (#Entries, resolution range(Å))
R_{free}	130704	1271 (2.76-2.72)
Clashscore	141614	1322 (2.76-2.72)
Ramachandran outliers	138981	1297 (2.76-2.72)
Sidechain outliers	138945	1298 (2.76-2.72)
RSRZ outliers	127900	1243 (2.76-2.72)

The table below summarises the geometric issues observed across the polymeric chains and their fit to the electron density. The red, orange, yellow and green segments on the lower bar indicate the fraction of residues that contain outliers for ≥ 3 , 2, 1 and 0 types of geometric quality criteria respectively. A grey segment represents the fraction of residues that are not modelled. The numeric value for each fraction is indicated below the corresponding segment, with a dot representing fractions $\leq 5\%$. The upper red bar (where present) indicates the fraction of residues that have poor fit to the electron density. The numeric value is given above the bar.

Mol	Chain	Length	Quality of chain
1	A	666	
1	B	666	

2 Entry composition [i](#)

There are 4 unique types of molecules in this entry. The entry contains 9848 atoms, of which 0 are hydrogens and 0 are deuteriums.

In the tables below, the ZeroOcc column contains the number of atoms modelled with zero occupancy, the AltConf column contains the number of residues with at least one atom in alternate conformation and the Trace column contains the number of residues modelled with at most 2 atoms.

- Molecule 1 is a protein called SERINE PROTEASE NS3.

Mol	Chain	Residues	Atoms					ZeroOcc	AltConf	Trace
			Total	C	N	O	S			
1	A	639	4761	2997	828	906	30	0	0	0
1	B	639	4761	2997	828	906	30	0	0	0

There are 60 discrepancies between the modelled and reference sequences:

Chain	Residue	Modelled	Actual	Comment	Reference
A	-34	MET	-	expression tag	UNP P26663
A	-33	GLY	-	expression tag	UNP P26663
A	-32	SER	-	expression tag	UNP P26663
A	-31	SER	-	expression tag	UNP P26663
A	-30	HIS	-	expression tag	UNP P26663
A	-29	HIS	-	expression tag	UNP P26663
A	-28	HIS	-	expression tag	UNP P26663
A	-27	HIS	-	expression tag	UNP P26663
A	-26	HIS	-	expression tag	UNP P26663
A	-25	HIS	-	expression tag	UNP P26663
A	-24	SER	-	expression tag	UNP P26663
A	-23	SER	-	expression tag	UNP P26663
A	-22	GLY	-	expression tag	UNP P26663
A	-21	LEU	-	expression tag	UNP P26663
A	-20	VAL	-	expression tag	UNP P26663
A	-19	PRO	-	expression tag	UNP P26663
A	-18	ARG	-	expression tag	UNP P26663
A	-17	GLY	-	expression tag	UNP P26663
A	-16	SER	-	expression tag	UNP P26663
A	-15	HIS	-	expression tag	UNP P26663
A	-14	MET	-	expression tag	UNP P26663
A	0	SER	-	linker	UNP P26663
A	1	GLY	-	linker	UNP P26663
A	2	SER	-	linker	UNP P26663
A	66	GLY	ALA	conflict	UNP P26663

Continued on next page...

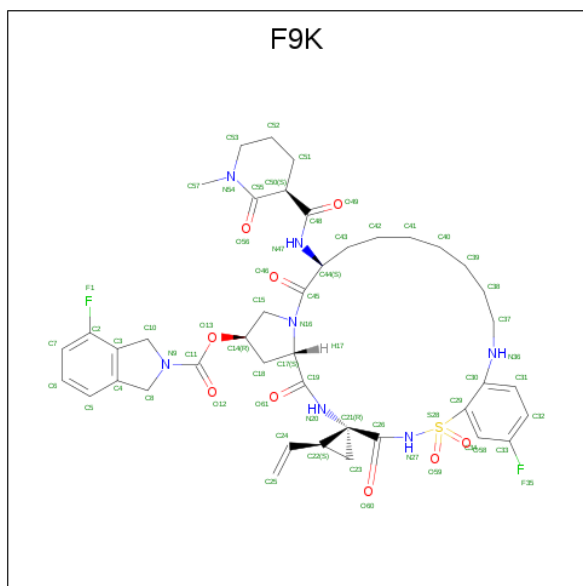
Continued from previous page...

Chain	Residue	Modelled	Actual	Comment	Reference
A	86	GLN	PRO	conflict	UNP P26663
A	87	ALA	LYS	conflict	UNP P26663
A	147	SER	PHE	conflict	UNP P26663
A	628	ALA	GLU	engineered mutation	UNP P26663
A	631	LEU	THR	engineered mutation	UNP P26663
B	-34	MET	-	expression tag	UNP P26663
B	-33	GLY	-	expression tag	UNP P26663
B	-32	SER	-	expression tag	UNP P26663
B	-31	SER	-	expression tag	UNP P26663
B	-30	HIS	-	expression tag	UNP P26663
B	-29	HIS	-	expression tag	UNP P26663
B	-28	HIS	-	expression tag	UNP P26663
B	-27	HIS	-	expression tag	UNP P26663
B	-26	HIS	-	expression tag	UNP P26663
B	-25	HIS	-	expression tag	UNP P26663
B	-24	SER	-	expression tag	UNP P26663
B	-23	SER	-	expression tag	UNP P26663
B	-22	GLY	-	expression tag	UNP P26663
B	-21	LEU	-	expression tag	UNP P26663
B	-20	VAL	-	expression tag	UNP P26663
B	-19	PRO	-	expression tag	UNP P26663
B	-18	ARG	-	expression tag	UNP P26663
B	-17	GLY	-	expression tag	UNP P26663
B	-16	SER	-	expression tag	UNP P26663
B	-15	HIS	-	expression tag	UNP P26663
B	-14	MET	-	expression tag	UNP P26663
B	0	SER	-	linker	UNP P26663
B	1	GLY	-	linker	UNP P26663
B	2	SER	-	linker	UNP P26663
B	66	GLY	ALA	conflict	UNP P26663
B	86	GLN	PRO	conflict	UNP P26663
B	87	ALA	LYS	conflict	UNP P26663
B	147	SER	PHE	conflict	UNP P26663
B	628	ALA	GLU	engineered mutation	UNP P26663
B	631	LEU	THR	engineered mutation	UNP P26663

- Molecule 2 is ZINC ION (three-letter code: ZN) (formula: Zn).

Mol	Chain	Residues	Atoms	ZeroOcc	AltConf
2	B	1	Total Zn 1 1	0	0
2	A	1	Total Zn 1 1	0	0

- Molecule 3 is (1'R,2R,2'S,6S,24AS)-17-FLUORO-6-(1-METHYL-2-OXOPIPERIDINE-3-CARBOXAMIDO)-19,19-DIOXIDO-5,21,24-TRIOXO-2'-VINYL-1,2,3,5,6,7,8,9,10,11,12,13,14,20,21,23,24,24A-OCTADECYDROSPIRO[BENZO[S]PYRROLO[2,1-G][1,2,5,8,18]THIATETRAAZACYCLOICOSINE-22,1'-CYCLOPRO-2-CARBOXYLATEPAN]-2-YL 4-FLUOROISOINDOLINE (three-letter code: F9K) (formula: $C_{42}H_{51}F_2N_7O_9S$).



Mol	Chain	Residues	Atoms					ZeroOcc	AltConf		
			Total	C	F	N	O			S	
3	A	1	Total	61	42	2	7	9	1	0	0
3	B	1	Total	61	42	2	7	9	1	0	0

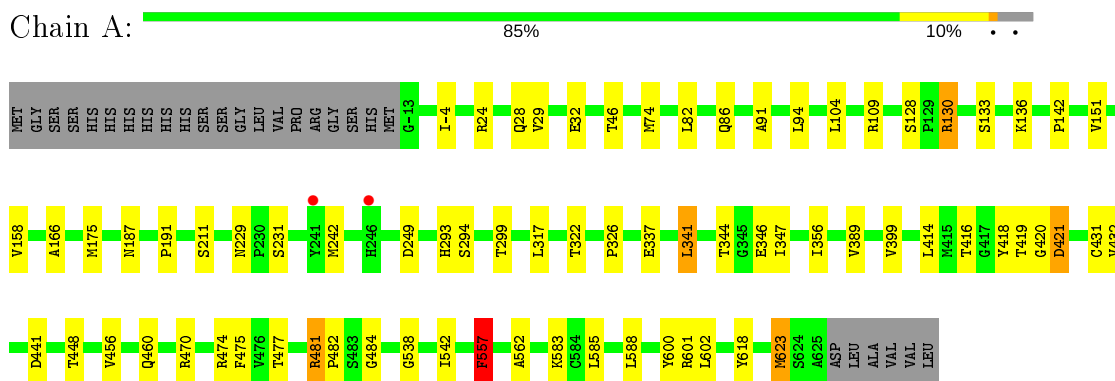
- Molecule 4 is water.

Mol	Chain	Residues	Atoms		ZeroOcc	AltConf
			Total	O		
4	A	109	Total	109	0	0
4	B	93	Total	93	0	0

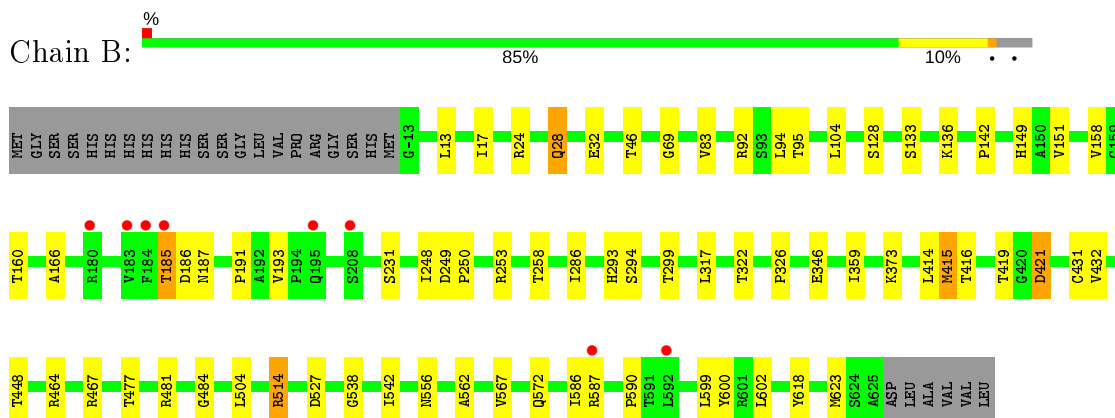
3 Residue-property plots [i](#)

These plots are drawn for all protein, RNA and DNA chains in the entry. The first graphic for a chain summarises the proportions of the various outlier classes displayed in the second graphic. The second graphic shows the sequence view annotated by issues in geometry and electron density. Residues are color-coded according to the number of geometric quality criteria for which they contain at least one outlier: green = 0, yellow = 1, orange = 2 and red = 3 or more. A red dot above a residue indicates a poor fit to the electron density ($RSRZ > 2$). Stretches of 2 or more consecutive residues without any outlier are shown as a green connector. Residues present in the sample, but not in the model, are shown in grey.

- Molecule 1: SERINE PROTEASE NS3



- Molecule 1: SERINE PROTEASE NS3



4 Data and refinement statistics

Property	Value	Source
Space group	P 21 21 21	Depositor
Cell constants a, b, c, α , β , γ	91.97Å 110.47Å 137.23Å 90.00° 90.00° 90.00°	Depositor
Resolution (Å)	76.40 – 2.73 76.40 – 2.73	Depositor EDS
% Data completeness (in resolution range)	99.8 (76.40-2.73) 99.8 (76.40-2.73)	Depositor EDS
R_{merge}	0.09	Depositor
R_{sym}	(Not available)	Depositor
$\langle I/\sigma(I) \rangle$ ¹	4.15 (at 2.73Å)	Xtrriage
Refinement program	BUSTER 2.9.6	Depositor
R, R_{free}	0.178 , 0.231 0.178 , 0.229	Depositor DCC
R_{free} test set	1890 reflections (5.00%)	wwPDB-VP
Wilson B-factor (Å ²)	45.6	Xtrriage
Anisotropy	0.266	Xtrriage
Bulk solvent k_{sol} (e/Å ³), B_{sol} (Å ²)	0.32 , 51.6	EDS
L-test for twinning ²	$\langle L \rangle = 0.48$, $\langle L^2 \rangle = 0.31$	Xtrriage
Estimated twinning fraction	No twinning to report.	Xtrriage
F_o, F_c correlation	0.94	EDS
Total number of atoms	9848	wwPDB-VP
Average B, all atoms (Å ²)	55.0	wwPDB-VP

Xtrriage's analysis on translational NCS is as follows: *The largest off-origin peak in the Patterson function is 4.38% of the height of the origin peak. No significant pseudotranslation is detected.*

¹Intensities estimated from amplitudes.

²Theoretical values of $\langle |L| \rangle$, $\langle L^2 \rangle$ for acentric reflections are 0.5, 0.333 respectively for untwinned datasets, and 0.375, 0.2 for perfectly twinned datasets.

5 Model quality [i](#)

5.1 Standard geometry [i](#)

Bond lengths and bond angles in the following residue types are not validated in this section: F9K, ZN

The Z score for a bond length (or angle) is the number of standard deviations the observed value is removed from the expected value. A bond length (or angle) with $|Z| > 5$ is considered an outlier worth inspection. RMSZ is the root-mean-square of all Z scores of the bond lengths (or angles).

Mol	Chain	Bond lengths		Bond angles	
		RMSZ	# Z >5	RMSZ	# Z >5
1	A	0.50	0/4870	0.71	1/6650 (0.0%)
1	B	0.50	0/4870	0.72	1/6650 (0.0%)
All	All	0.50	0/9740	0.71	2/13300 (0.0%)

There are no bond length outliers.

All (2) bond angle outliers are listed below:

Mol	Chain	Res	Type	Atoms	Z	Observed(°)	Ideal(°)
1	A	557	PHE	N-CA-C	6.58	128.76	111.00
1	B	556	ASN	N-CA-C	5.09	124.73	111.00

There are no chirality outliers.

There are no planarity outliers.

5.2 Too-close contacts [i](#)

In the following table, the Non-H and H(model) columns list the number of non-hydrogen atoms and hydrogen atoms in the chain respectively. The H(added) column lists the number of hydrogen atoms added and optimized by MolProbity. The Clashes column lists the number of clashes within the asymmetric unit, whereas Symm-Clashes lists symmetry related clashes.

Mol	Chain	Non-H	H(model)	H(added)	Clashes	Symm-Clashes
1	A	4761	0	4738	35	0
1	B	4761	0	4740	33	0
2	A	1	0	0	0	0
2	B	1	0	0	0	0
3	A	61	0	50	0	0
3	B	61	0	50	0	0
4	A	109	0	0	0	0

Continued on next page...

Continued from previous page...

Mol	Chain	Non-H	H(model)	H(added)	Clashes	Symm-Clashes
4	B	93	0	0	1	0
All	All	9848	0	9578	68	0

The all-atom clashscore is defined as the number of clashes found per 1000 atoms (including hydrogen atoms). The all-atom clashscore for this structure is 4.

All (68) close contacts within the same asymmetric unit are listed below, sorted by their clash magnitude.

Atom-1	Atom-2	Interatomic distance (Å)	Clash overlap (Å)
1:A:130:ARG:HG2	1:A:130:ARG:HH11	1.35	0.90
1:A:421:ASP:C	1:A:421:ASP:OD1	2.30	0.70
1:A:133:SER:HA	1:A:136:LYS:HD2	1.75	0.69
1:B:133:SER:HA	1:B:136:LYS:HD2	1.76	0.66
1:B:13:LEU:HD11	1:B:17:ILE:HD11	1.76	0.66
1:B:415:MET:HA	1:B:464:ARG:HH21	1.64	0.62
1:A:82:LEU:HD21	1:A:175:MET:HG2	1.81	0.61
1:A:294:SER:HB2	1:A:299:THR:HG21	1.83	0.61
1:B:294:SER:HB2	1:B:299:THR:HG21	1.82	0.61
1:A:418:TYR:CZ	1:A:420:GLY:HA3	2.39	0.57
1:B:514:ARG:HH22	1:B:527:ASP:CG	2.07	0.57
1:A:326:PRO:HB3	1:A:484:GLY:HA3	1.85	0.57
1:A:130:ARG:CG	1:A:130:ARG:HH11	2.12	0.56
1:A:130:ARG:NH1	1:A:130:ARG:HG2	2.15	0.56
1:B:13:LEU:CD1	1:B:17:ILE:HD11	2.39	0.53
1:A:418:TYR:CE2	1:A:420:GLY:HA3	2.44	0.53
1:B:95:THR:HG23	1:B:149:HIS:CD2	2.45	0.52
1:A:29:VAL:HG23	1:A:91:ALA:HB2	1.92	0.51
1:B:158:VAL:HB	1:B:166:ALA:HB3	1.93	0.51
1:B:231:SER:HB2	1:B:416:THR:HA	1.92	0.51
1:A:158:VAL:HB	1:A:166:ALA:HB3	1.92	0.51
1:B:248:ILE:O	1:B:250:PRO:HD3	2.10	0.51
1:A:421:ASP:O	1:A:421:ASP:OD1	2.30	0.50
1:B:326:PRO:HB3	1:B:484:GLY:HA3	1.92	0.49
1:B:104:LEU:HD22	1:B:151:VAL:HG21	1.95	0.49
1:A:231:SER:HB2	1:A:416:THR:HA	1.93	0.49
1:B:538:GLY:HA3	1:B:618:TYR:CE2	2.47	0.49
1:A:542:ILE:HD11	1:A:562:ALA:HB3	1.94	0.48
1:B:191:PRO:HG2	1:B:317:LEU:HD21	1.95	0.48
1:B:32:GLU:HG3	1:B:92:ARG:O	2.13	0.48
1:B:253:ARG:HA	1:B:258:THR:HG22	1.95	0.48
1:B:193:VAL:HG21	1:B:286:ILE:HD11	1.95	0.48

Continued on next page...

Continued from previous page...

Atom-1	Atom-2	Interatomic distance (Å)	Clash overlap (Å)
1:A:441:ASP:O	1:A:601:ARG:NH1	2.37	0.47
1:B:185:THR:O	1:B:185:THR:OG1	2.29	0.47
1:A:346:GLU:HB2	1:A:356:ILE:HG23	1.97	0.47
1:A:389:VAL:HG13	1:A:399:VAL:HG22	1.97	0.47
1:A:104:LEU:HD22	1:A:151:VAL:HG21	1.98	0.46
1:B:432:VAL:HG13	1:B:448:THR:HG23	1.98	0.46
1:B:24:ARG:HG3	1:B:69:GLY:HA2	1.97	0.46
1:A:191:PRO:HG2	1:A:317:LEU:HD21	1.98	0.45
1:A:538:GLY:HA3	1:A:618:TYR:CE2	2.51	0.45
1:A:585:LEU:HD12	1:A:588:LEU:HD12	1.99	0.45
1:B:32:GLU:HB3	1:B:94:LEU:HG	1.98	0.45
1:B:567:VAL:HG11	1:B:599:LEU:HD21	1.98	0.44
1:B:28:GLN:HG3	1:B:28:GLN:H	1.50	0.44
1:B:95:THR:HG23	1:B:149:HIS:HD2	1.83	0.44
1:A:130:ARG:CG	1:A:130:ARG:NH1	2.77	0.43
1:B:13:LEU:CD1	1:B:17:ILE:CD1	2.96	0.43
1:A:293:HIS:HD2	1:A:322:THR:OG1	2.01	0.43
1:B:293:HIS:HD2	1:B:322:THR:OG1	2.01	0.43
1:A:418:TYR:CE2	1:A:420:GLY:CA	3.02	0.42
1:A:341:LEU:HB2	1:A:475:PHE:O	2.19	0.42
1:A:432:VAL:HG13	1:A:448:THR:HG23	2.01	0.42
1:A:347:ILE:HD11	1:A:356:ILE:HG22	2.01	0.42
1:B:293:HIS:CD2	1:B:322:THR:OG1	2.73	0.42
1:A:481:ARG:HG2	1:A:482:PRO:HD2	2.00	0.42
1:B:46:THR:HG21	1:B:142:PRO:HB3	2.01	0.42
1:B:590:PRO:HD3	4:B:2089:HOH:O	2.20	0.42
1:A:32:GLU:HB3	1:A:94:LEU:HG	2.02	0.41
1:A:46:THR:HG21	1:A:142:PRO:HB3	2.01	0.41
1:A:74:MET:HE3	1:A:86:GLN:HB2	2.02	0.41
1:B:421:ASP:OD1	1:B:467:ARG:NE	2.54	0.41
1:A:623:MET:H	1:A:623:MET:HG2	1.74	0.41
1:A:293:HIS:CD2	1:A:322:THR:OG1	2.73	0.41
1:A:456:VAL:O	1:A:460:GLN:HG2	2.21	0.41
1:B:415:MET:HA	1:B:464:ARG:NH2	2.33	0.40
1:B:542:ILE:HD11	1:B:562:ALA:HB3	2.04	0.40
1:B:13:LEU:O	1:B:17:ILE:HD12	2.22	0.40

There are no symmetry-related clashes.

5.3 Torsion angles [i](#)

5.3.1 Protein backbone [i](#)

In the following table, the Percentiles column shows the percent Ramachandran outliers of the chain as a percentile score with respect to all X-ray entries followed by that with respect to entries of similar resolution.

The Analysed column shows the number of residues for which the backbone conformation was analysed, and the total number of residues.

Mol	Chain	Analysed	Favoured	Allowed	Outliers	Percentiles	
1	A	637/666 (96%)	617 (97%)	19 (3%)	1 (0%)	47	69
1	B	637/666 (96%)	619 (97%)	18 (3%)	0	100	100
All	All	1274/1332 (96%)	1236 (97%)	37 (3%)	1 (0%)	51	75

All (1) Ramachandran outliers are listed below:

Mol	Chain	Res	Type
1	A	557	PHE

5.3.2 Protein sidechains [i](#)

In the following table, the Percentiles column shows the percent sidechain outliers of the chain as a percentile score with respect to all X-ray entries followed by that with respect to entries of similar resolution.

The Analysed column shows the number of residues for which the sidechain conformation was analysed, and the total number of residues.

Mol	Chain	Analysed	Rotameric	Outliers	Percentiles	
1	A	520/543 (96%)	493 (95%)	27 (5%)	23	39
1	B	520/543 (96%)	494 (95%)	26 (5%)	24	42
All	All	1040/1086 (96%)	987 (95%)	53 (5%)	24	41

All (53) residues with a non-rotameric sidechain are listed below:

Mol	Chain	Res	Type
1	A	-4	ILE
1	A	24	ARG
1	A	28	GLN
1	A	109	ARG
1	A	128	SER

Continued on next page...

Continued from previous page...

Mol	Chain	Res	Type
1	A	130	ARG
1	A	187	ASN
1	A	211	SER
1	A	229	ASN
1	A	242	MET
1	A	249	ASP
1	A	337	GLU
1	A	341	LEU
1	A	344	THR
1	A	414	LEU
1	A	419	THR
1	A	421	ASP
1	A	431	CYS
1	A	470	ARG
1	A	474	ARG
1	A	477	THR
1	A	481	ARG
1	A	557	PHE
1	A	583	LYS
1	A	600	TYR
1	A	602	LEU
1	A	623	MET
1	B	28	GLN
1	B	83	VAL
1	B	128	SER
1	B	160	THR
1	B	185	THR
1	B	186	ASP
1	B	187	ASN
1	B	249	ASP
1	B	346	GLU
1	B	359	ILE
1	B	373	LYS
1	B	414	LEU
1	B	415	MET
1	B	419	THR
1	B	421	ASP
1	B	431	CYS
1	B	477	THR
1	B	481	ARG
1	B	504	LEU
1	B	514	ARG

Continued on next page...

Continued from previous page...

Mol	Chain	Res	Type
1	B	572	GLN
1	B	586	ILE
1	B	587	ARG
1	B	600	TYR
1	B	602	LEU
1	B	623	MET

Some sidechains can be flipped to improve hydrogen bonding and reduce clashes. All (9) such sidechains are listed below:

Mol	Chain	Res	Type
1	A	149	HIS
1	A	293	HIS
1	A	460	GLN
1	A	545	HIS
1	A	549	GLN
1	B	149	HIS
1	B	293	HIS
1	B	460	GLN
1	B	613	HIS

5.3.3 RNA [i](#)

There are no RNA molecules in this entry.

5.4 Non-standard residues in protein, DNA, RNA chains [i](#)

There are no non-standard protein/DNA/RNA residues in this entry.

5.5 Carbohydrates [i](#)

There are no carbohydrates in this entry.

5.6 Ligand geometry [i](#)

Of 4 ligands modelled in this entry, 2 are monoatomic - leaving 2 for Mogul analysis.

In the following table, the Counts columns list the number of bonds (or angles) for which Mogul statistics could be retrieved, the number of bonds (or angles) that are observed in the model and the number of bonds (or angles) that are defined in the Chemical Component Dictionary. The

Link column lists molecule types, if any, to which the group is linked. The Z score for a bond length (or angle) is the number of standard deviations the observed value is removed from the expected value. A bond length (or angle) with $|Z| > 2$ is considered an outlier worth inspection. RMSZ is the root-mean-square of all Z scores of the bond lengths (or angles).

Mol	Type	Chain	Res	Link	Bond lengths			Bond angles		
					Counts	RMSZ	# Z > 2	Counts	RMSZ	# Z > 2
3	F9K	A	1721	-	65,67,67	1.56	14 (21%)	83,99,99	2.01	26 (31%)
3	F9K	B	1721	-	65,67,67	1.57	11 (16%)	83,99,99	2.53	28 (33%)

In the following table, the Chirals column lists the number of chiral outliers, the number of chiral centers analysed, the number of these observed in the model and the number defined in the Chemical Component Dictionary. Similar counts are reported in the Torsion and Rings columns. '2' means no outliers of that kind were identified.

Mol	Type	Chain	Res	Link	Chirals	Torsions	Rings
3	F9K	A	1721	-	-	9/63/105/105	0/6/7/7
3	F9K	B	1721	-	-	11/63/105/105	0/6/7/7

All (25) bond length outliers are listed below:

Mol	Chain	Res	Type	Atoms	Z	Observed(Å)	Ideal(Å)
3	B	1721	F9K	O59-S28	-5.01	1.37	1.43
3	A	1721	F9K	O59-S28	-4.65	1.38	1.43
3	B	1721	F9K	O58-S28	-4.29	1.38	1.43
3	A	1721	F9K	O58-S28	-3.41	1.39	1.43
3	B	1721	F9K	C21-N20	-3.31	1.40	1.45
3	B	1721	F9K	S28-N27	-3.27	1.57	1.64
3	A	1721	F9K	S28-N27	-3.17	1.57	1.64
3	A	1721	F9K	O13-C14	-3.16	1.38	1.46
3	A	1721	F9K	C21-C26	-3.13	1.48	1.53
3	B	1721	F9K	C21-C26	-2.93	1.48	1.53
3	B	1721	F9K	F35-C33	-2.88	1.29	1.36
3	A	1721	F9K	C29-S28	-2.80	1.73	1.77
3	A	1721	F9K	C21-N20	-2.80	1.41	1.45
3	A	1721	F9K	F35-C33	-2.62	1.30	1.36
3	B	1721	F9K	C29-S28	-2.58	1.73	1.77
3	A	1721	F9K	O46-C45	-2.53	1.17	1.22
3	A	1721	F9K	C44-C45	-2.49	1.48	1.53
3	B	1721	F9K	O13-C14	-2.45	1.40	1.46
3	A	1721	F9K	C15-N16	-2.43	1.43	1.47
3	A	1721	F9K	O13-C11	-2.38	1.29	1.34
3	B	1721	F9K	O46-C45	-2.37	1.18	1.22
3	B	1721	F9K	O60-C26	-2.35	1.18	1.22

Continued on next page...

Continued from previous page...

Mol	Chain	Res	Type	Atoms	Z	Observed(Å)	Ideal(Å)
3	A	1721	F9K	O60-C26	-2.22	1.19	1.22
3	A	1721	F9K	C44-N47	-2.22	1.41	1.45
3	B	1721	F9K	O49-C48	-2.14	1.19	1.23

All (54) bond angle outliers are listed below:

Mol	Chain	Res	Type	Atoms	Z	Observed(°)	Ideal(°)
3	B	1721	F9K	C4-C8-N9	-9.14	98.14	102.46
3	B	1721	F9K	C23-C21-N20	-8.88	105.87	117.80
3	A	1721	F9K	C4-C8-N9	-6.20	99.53	102.46
3	A	1721	F9K	C22-C21-C26	5.84	129.19	116.80
3	A	1721	F9K	C23-C21-N20	-5.62	110.25	117.80
3	B	1721	F9K	C22-C21-C26	5.13	127.69	116.80
3	B	1721	F9K	C30-C29-S28	4.68	129.62	122.05
3	B	1721	F9K	C26-C21-N20	4.62	121.02	116.06
3	B	1721	F9K	C34-C29-S28	-4.42	110.72	118.51
3	B	1721	F9K	C45-C44-N47	4.34	118.94	108.81
3	B	1721	F9K	F1-C2-C3	4.26	122.70	117.63
3	B	1721	F9K	C33-C34-C29	4.16	119.69	116.86
3	B	1721	F9K	C18-C14-C15	-4.00	100.19	103.66
3	A	1721	F9K	C7-C2-C3	-3.96	116.84	124.02
3	B	1721	F9K	C7-C2-C3	-3.76	117.20	124.02
3	B	1721	F9K	C31-C30-N36	-3.73	115.44	121.80
3	B	1721	F9K	O59-S28-O58	-3.64	115.08	119.55
3	B	1721	F9K	C43-C44-N47	-3.62	103.56	110.88
3	A	1721	F9K	C34-C29-S28	-3.31	112.68	118.51
3	A	1721	F9K	C15-N16-C17	3.30	116.46	111.70
3	B	1721	F9K	O58-S28-C29	3.30	113.08	107.66
3	B	1721	F9K	C18-C17-N16	-3.23	98.83	103.10
3	A	1721	F9K	C45-C44-N47	3.20	116.28	108.81
3	A	1721	F9K	F1-C2-C3	3.17	121.41	117.63
3	A	1721	F9K	C23-C21-C26	-2.90	107.74	117.37
3	A	1721	F9K	C26-C21-N20	2.89	119.17	116.06
3	B	1721	F9K	C44-C45-N16	2.88	123.89	118.62
3	A	1721	F9K	C30-C29-S28	2.86	126.67	122.05
3	A	1721	F9K	C18-C17-N16	-2.84	99.35	103.10
3	A	1721	F9K	C31-C30-N36	-2.75	117.11	121.80
3	A	1721	F9K	C5-C4-C3	2.58	123.10	121.02
3	A	1721	F9K	C44-C45-N16	2.57	123.33	118.62
3	A	1721	F9K	C14-C15-N16	-2.53	99.16	102.62
3	B	1721	F9K	C6-C5-C4	-2.52	117.13	120.89
3	A	1721	F9K	C31-C32-C33	2.48	120.92	118.36

Continued on next page...

Continued from previous page...

Mol	Chain	Res	Type	Atoms	Z	Observed(°)	Ideal(°)
3	B	1721	F9K	C31-C32-C33	2.46	120.90	118.36
3	A	1721	F9K	O13-C11-N9	-2.45	109.07	111.27
3	A	1721	F9K	C6-C5-C4	-2.43	117.27	120.89
3	A	1721	F9K	C43-C44-N47	-2.40	106.01	110.88
3	B	1721	F9K	O13-C11-N9	2.37	113.40	111.27
3	A	1721	F9K	O46-C45-C44	-2.37	115.38	119.66
3	B	1721	F9K	C52-C51-C50	2.33	114.19	111.28
3	B	1721	F9K	C57-N54-C55	-2.32	116.91	119.42
3	A	1721	F9K	C6-C7-C2	2.32	122.26	118.46
3	B	1721	F9K	C44-N47-C48	2.31	126.62	121.67
3	A	1721	F9K	C23-C22-C21	2.29	60.47	59.09
3	A	1721	F9K	O59-S28-O58	-2.28	116.74	119.55
3	B	1721	F9K	O46-C45-C44	-2.20	115.68	119.66
3	B	1721	F9K	C42-C43-C44	-2.16	107.26	113.92
3	B	1721	F9K	C23-C21-C26	-2.15	110.23	117.37
3	B	1721	F9K	C32-C33-C34	-2.14	120.51	123.29
3	B	1721	F9K	C14-C15-N16	-2.11	99.73	102.62
3	A	1721	F9K	C42-C43-C44	-2.03	107.67	113.92
3	A	1721	F9K	C33-C34-C29	2.00	118.22	116.86

There are no chirality outliers.

All (20) torsion outliers are listed below:

Mol	Chain	Res	Type	Atoms
3	B	1721	F9K	C26-N27-S28-C29
3	B	1721	F9K	C29-C30-N36-C37
3	B	1721	F9K	C42-C43-C44-N47
3	B	1721	F9K	C31-C30-N36-C37
3	A	1721	F9K	N36-C37-C38-C39
3	A	1721	F9K	C26-N27-S28-C29
3	A	1721	F9K	C31-C30-N36-C37
3	A	1721	F9K	C39-C40-C41-C42
3	B	1721	F9K	C39-C40-C41-C42
3	A	1721	F9K	C38-C39-C40-C41
3	B	1721	F9K	C42-C43-C44-C45
3	B	1721	F9K	C41-C42-C43-C44
3	B	1721	F9K	C30-C29-S28-O58
3	A	1721	F9K	O49-C48-C50-C55
3	B	1721	F9K	O49-C48-C50-C55
3	A	1721	F9K	C30-C29-S28-O58
3	B	1721	F9K	C30-C29-S28-N27
3	B	1721	F9K	C21-C22-C24-C25

Continued on next page...

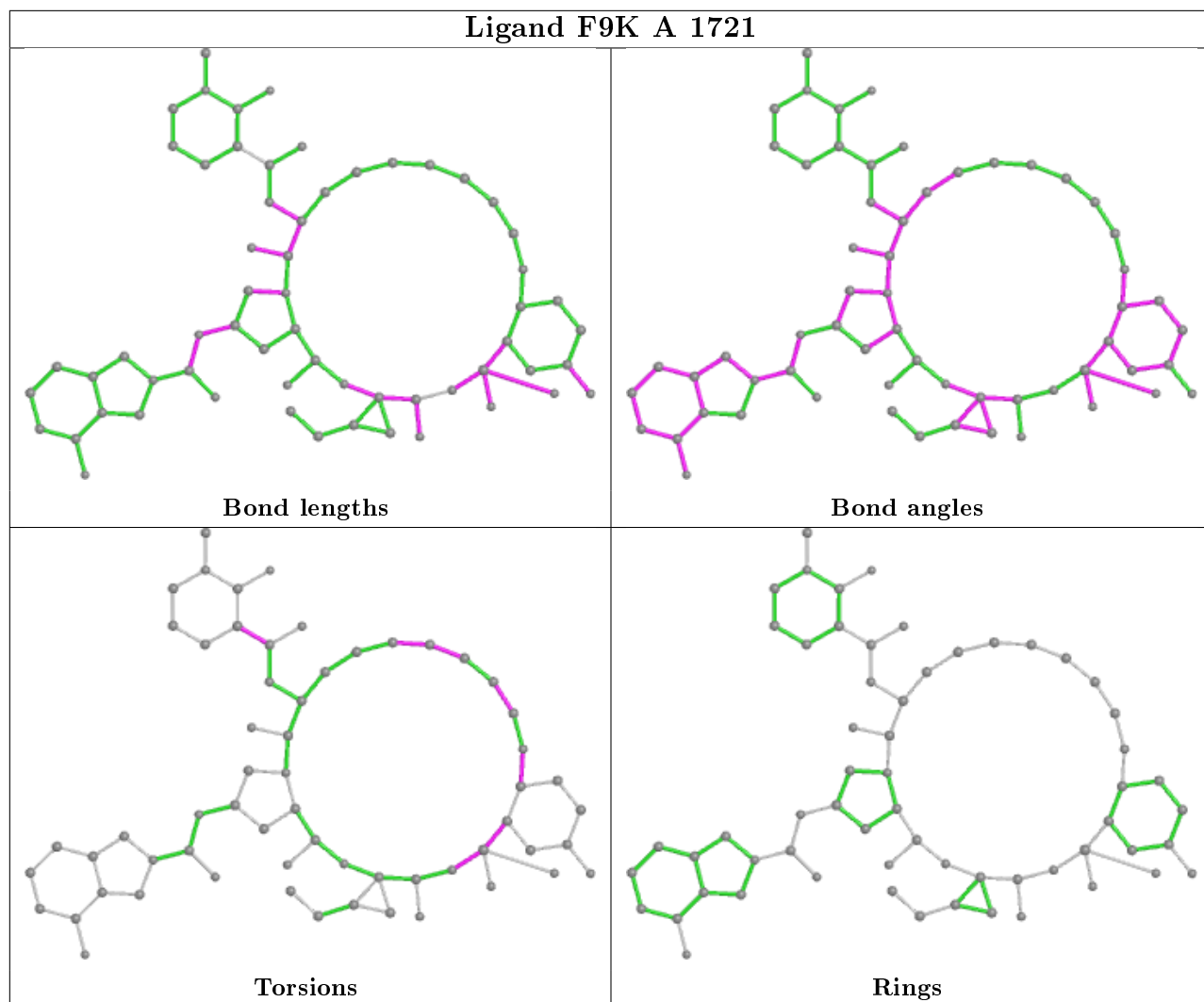
Continued from previous page...

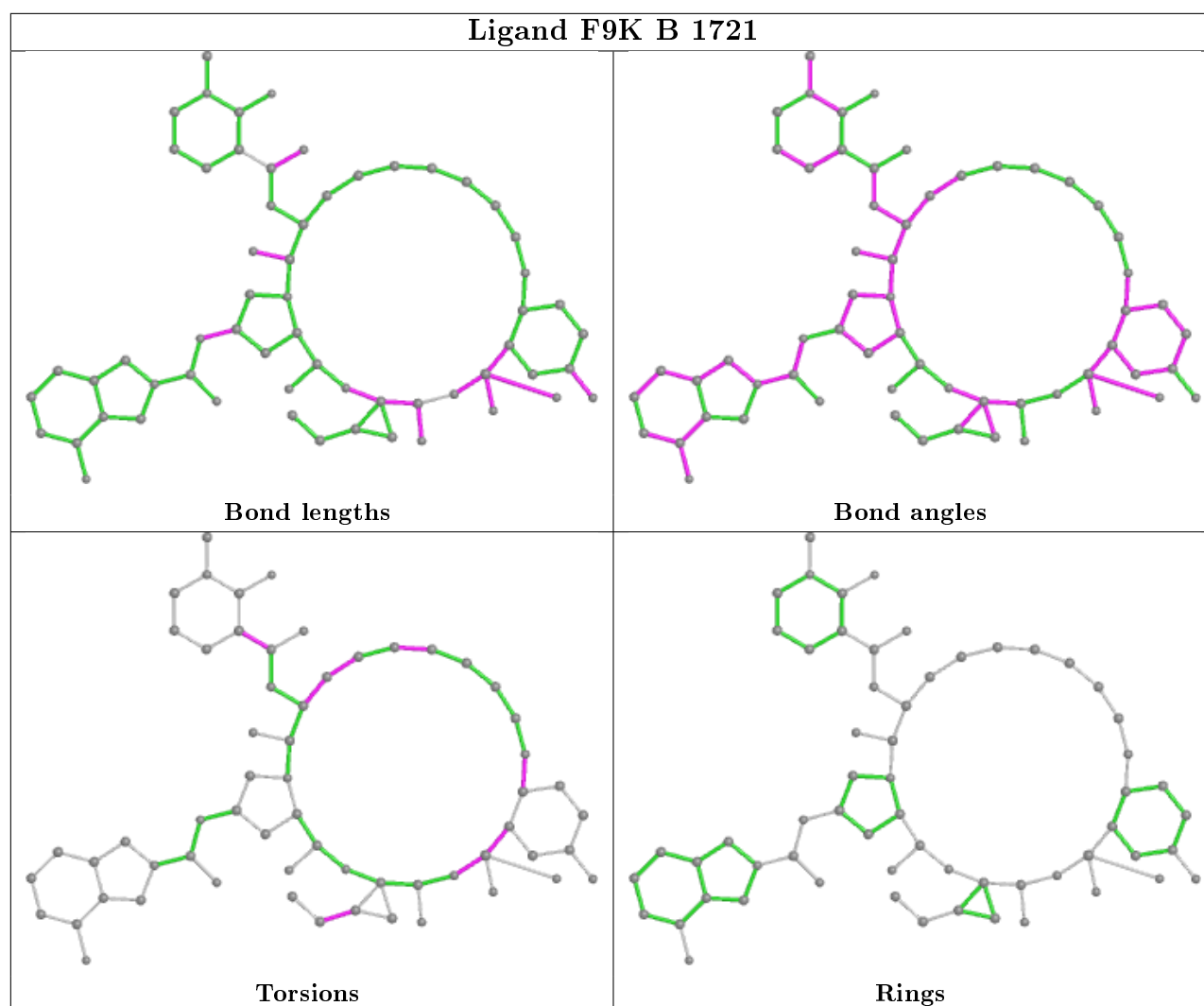
Mol	Chain	Res	Type	Atoms
3	A	1721	F9K	C26-N27-S28-O59
3	A	1721	F9K	C30-C29-S28-N27

There are no ring outliers.

No monomer is involved in short contacts.

The following is a two-dimensional graphical depiction of Mogul quality analysis of bond lengths, bond angles, torsion angles, and ring geometry for all instances of the Ligand of Interest. In addition, ligands with molecular weight > 250 and outliers as shown on the validation Tables will also be included. For torsion angles, if less than 5% of the Mogul distribution of torsion angles is within 10 degrees of the torsion angle in question, then that torsion angle is considered an outlier. Any bond that is central to one or more torsion angles identified as an outlier by Mogul will be highlighted in the graph. For rings, the root-mean-square deviation (RMSD) between the ring in question and similar rings identified by Mogul is calculated over all ring torsion angles. If the average RMSD is greater than 60 degrees and the minimal RMSD between the ring in question and any Mogul-identified rings is also greater than 60 degrees, then that ring is considered an outlier. The outliers are highlighted in purple. The color gray indicates Mogul did not find sufficient equivalents in the CSD to analyse the geometry.





5.7 Other polymers [\(i\)](#)

There are no such residues in this entry.

5.8 Polymer linkage issues [\(i\)](#)

There are no chain breaks in this entry.

6 Fit of model and data [i](#)

6.1 Protein, DNA and RNA chains [i](#)

In the following table, the column labelled ‘#RSRZ> 2’ contains the number (and percentage) of RSRZ outliers, followed by percent RSRZ outliers for the chain as percentile scores relative to all X-ray entries and entries of similar resolution. The OWAB column contains the minimum, median, 95th percentile and maximum values of the occupancy-weighted average B-factor per residue. The column labelled ‘Q< 0.9’ lists the number of (and percentage) of residues with an average occupancy less than 0.9.

Mol	Chain	Analysed	<RSRZ>	#RSRZ>2	OWAB(Å ²)	Q<0.9
1	A	639/666 (95%)	-0.16	2 (0%) 94 96	21, 47, 94, 137	0
1	B	639/666 (95%)	-0.04	8 (1%) 77 82	18, 53, 106, 148	0
All	All	1278/1332 (95%)	-0.10	10 (0%) 86 89	18, 50, 101, 148	0

All (10) RSRZ outliers are listed below:

Mol	Chain	Res	Type	RSRZ
1	B	185	THR	5.8
1	B	183	VAL	4.7
1	B	184	PHE	3.8
1	B	587	ARG	2.5
1	B	592	LEU	2.5
1	A	246	HIS	2.3
1	B	208	SER	2.1
1	B	195	GLN	2.1
1	B	180	ARG	2.1
1	A	241	TYR	2.1

6.2 Non-standard residues in protein, DNA, RNA chains [i](#)

There are no non-standard protein/DNA/RNA residues in this entry.

6.3 Carbohydrates [i](#)

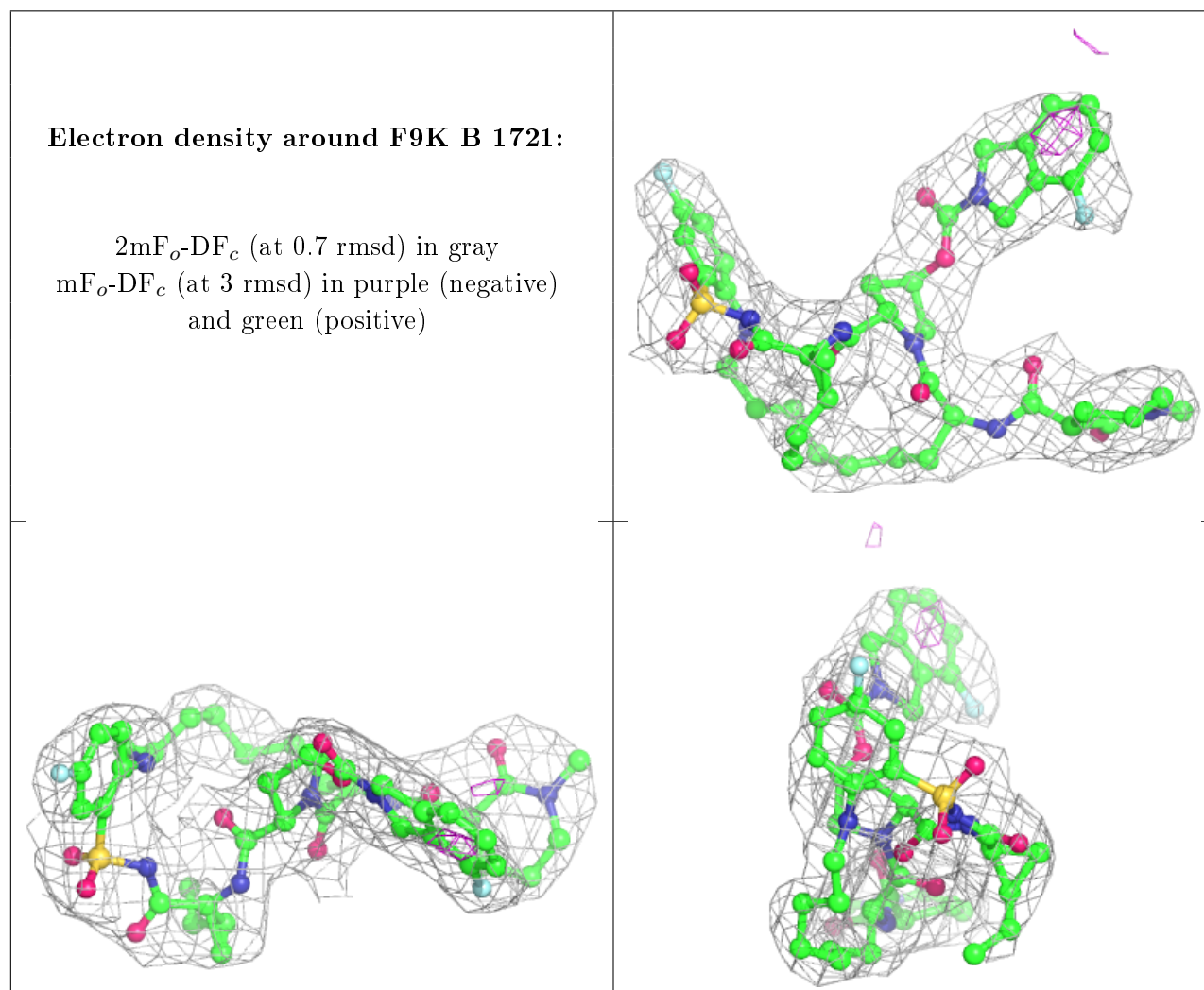
There are no carbohydrates in this entry.

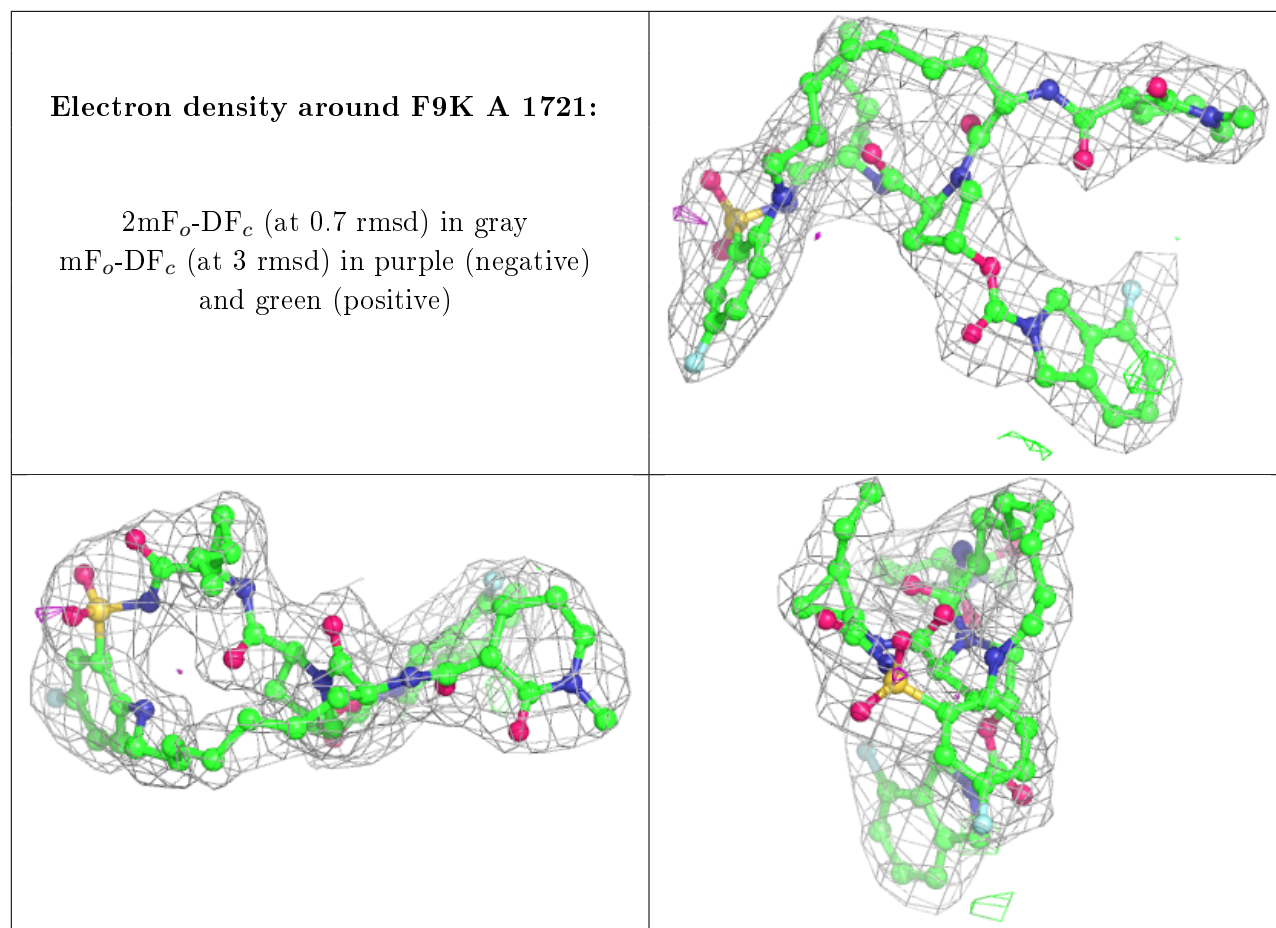
6.4 Ligands [i](#)

In the following table, the Atoms column lists the number of modelled atoms in the group and the number defined in the chemical component dictionary. The B-factors column lists the minimum, median, 95th percentile and maximum values of B factors of atoms in the group. The column labelled 'Q<0.9' lists the number of atoms with occupancy less than 0.9.

Mol	Type	Chain	Res	Atoms	RSCC	RSR	B-factors(Å ²)	Q<0.9
2	ZN	B	999	1/1	0.87	0.15	143,143,143,143	0
3	F9K	B	1721	61/61	0.96	0.16	45,55,69,71	0
3	F9K	A	1721	61/61	0.97	0.17	23,40,54,57	0
2	ZN	A	999	1/1	0.99	0.09	54,54,54,54	0

The following is a graphical depiction of the model fit to experimental electron density of all instances of the Ligand of Interest. In addition, ligands with molecular weight > 250 and outliers as shown on the geometry validation Tables will also be included. Each fit is shown from different orientation to approximate a three-dimensional view.





6.5 Other polymers [i](#)

There are no such residues in this entry.